

LINKA TAILINGS SAMPLING SUPPORTS STRONG HISTORICAL PROCESSING RECOVERY AS VIKING PREPARES TO DRILL

- Tailings sampling at the Linka Tungsten Project, Nevada, has returned low residual tungsten grades, indicating that historical processing recovered the majority of tungsten from mined material.
- Results provide a positive metallurgical read-through for Linka primary mineralisation and support Viking's confidence in the Project's processing characteristics.
- All 52 samples have now been assayed, returning a thickness-weighted average of 0.03% WO₃, with a maximum of 0.15% (Figure 1).
- Viking's confidence is further supported by recent metallurgical testwork which produced a high-quality 56.9% WO₃ concentrate at 76% recovery¹, with opportunities for further optimisation.
- Maiden RC drilling remains scheduled to commence in July, marking a key step in testing the primary tungsten system at Linka.

Viking Mines Limited (ASX: VKA, OTCID: VKALF) ("Viking" or "the Company") is pleased to advise that assay results have been received for the 52-sample tailings characterisation programme at the Linka Tungsten Project in Nevada, USA, announced on 14 April 2026². The programme has returned consistently low residual tungsten grades and is interpreted by the Company as evidence that historical processing was effective in recovering high amounts of tungsten from Linka ore. This is an extremely positive technical outcome. The results complement the recent metallurgical testwork which produced a 56.9% WO₃ concentrate at 76% recovery.

Viking Mines Managing Director & CEO Julian Woodcock said:

"The tailings programme has delivered a useful and positive result. Very little tungsten appears to have been left behind in the historical tailings dam, which supports the view that the historical operation recovered tungsten extremely efficiently from Linka ore."

"That is a constructive read-through as we prepare for maiden drilling. Linka now has low residual tailings grades, a quality 56.9% WO₃ concentrate from recent testwork at 76% recovery, and drilling about to commence. Our focus is on testing the primary mineralisation and building the technical case for Linka."

TAILINGS DAM SAMPLING RESULTS

The 52 samples collected across the historical tailings dam returned consistently low residual tungsten grades. The thickness-weighted average grade was 0.03% WO₃, with a maximum individual value of 0.15% WO₃.

¹ ASX Announcement, 10 June 2026, Linka Tungsten Recovery Improved to 76.0%.

² ASX Announcement, 14 April 2026, Stockpile and Tailings Evaluation Underway at Linka Tungsten Project

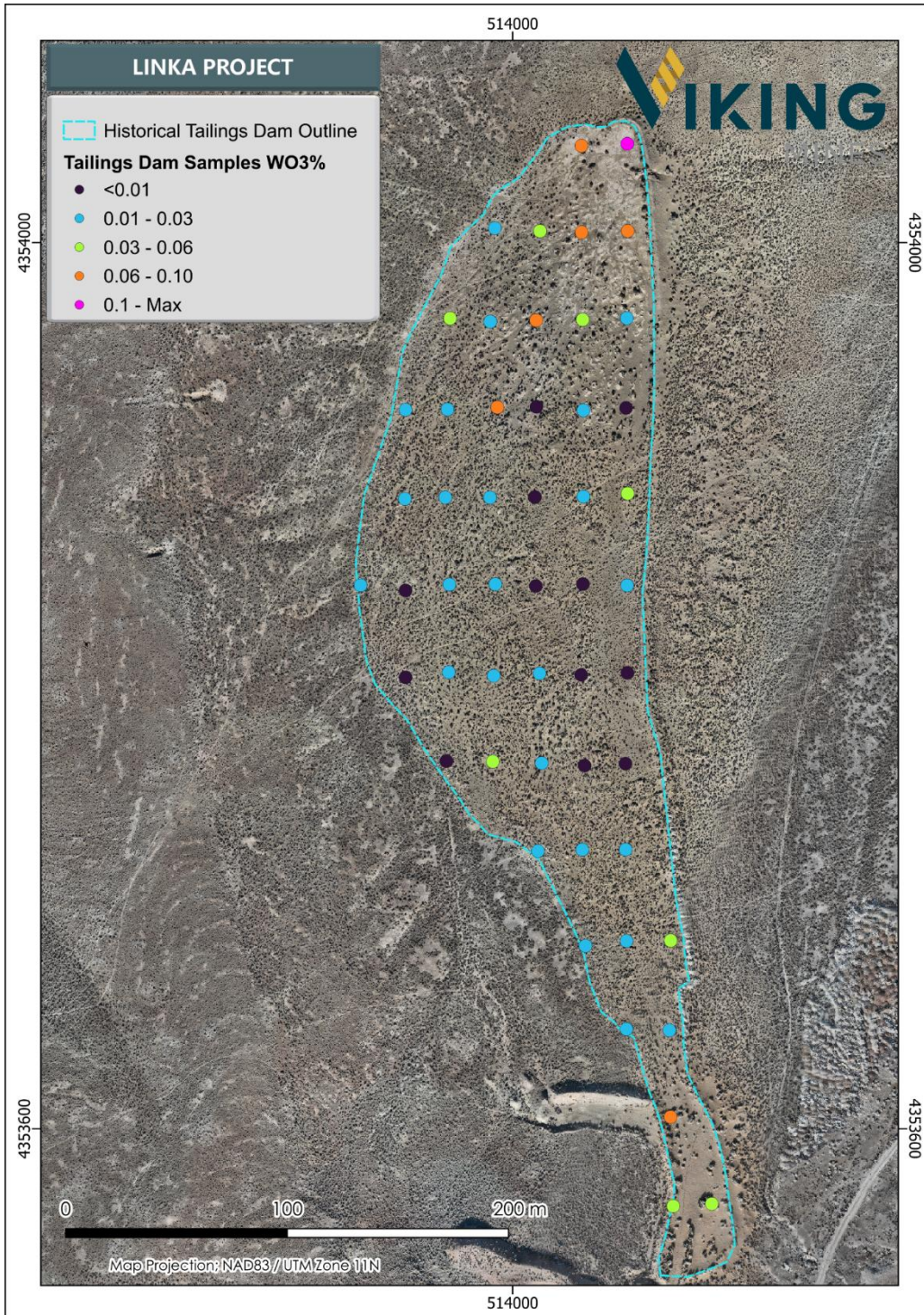


Figure 2; Map showing the Linka Project tailings dam and sample locations coloured by grade WO_3 .

The programme has achieved its intended purpose by determining whether the historical tailings dam could represent a meaningful supplemental feed source.

Importantly, these results relate specifically to the historical tailings dam and are separate from the historical Linka Main stockpile, which returned an average grade of 0.4% WO_3 across 41 samples³ and 0.8% WO_3 in a 97.8kg metallurgical sample (LKMET0001)⁴. Work continues to evaluate the Linka Main stockpile as a potential source of initial concentrates for offtake evaluation.

³ ASX Announcement, 9 June 2026, Linka Stockpile Sampling Delivers up to 1.1% WO_3 .

⁴ ASX Announcement, 14 January 2026, High Grade Assays up to 1.3% WO_3 from Linka Tungsten Project



METALLURGICAL READ-THROUGH

The very low residual grades provide positive metallurgical context for Linka. They are interpreted by the Company as consistent with effective recovery of tungsten during historical processing, indicating that the original operation extracted most of the contained tungsten and left little behind. A precise historical recovery figure cannot be determined because there are insufficient historical records reporting mill feed, head grade, concentrate grades and concentrate tonnages. However, the historical production record and the low residual tailings grades are supportive of Viking's view that strong tungsten recoveries may be achievable with appropriate modern processing.

Importantly, Viking's confidence in the metallurgical performance of Linka's primary mineralisation is underpinned by its own recent testwork, rather than by the tailings characterisation alone. Viking's testwork has to date delivered a high-quality concentrate grading 56.9% WO₃ at 76% recovery¹, providing a strong foundation for ongoing optimisation work.

DRILLING UPDATE

Viking continues to progress mobilisation for the maiden reverse circulation (RC) drilling campaign at Linka. The drill rig is completing final maintenance, with rig testing anticipated to commence immediately thereafter.

Allowing for the US Independence Day holiday, mobilisation is expected to commence in the week beginning 6 July 2026, with the rig anticipated to arrive on site in mid-July 2026. Associated pre-drilling earthworks are scheduled to commence in the week of 13 July 2026.

This timing preserves the Company's planned July start to maiden drilling and keeps Viking on track to commence first drill testing in more than 40 years of the Linka primary tungsten system.

NEXT STEPS

- Complete final rig testing and mobilisation to site.
- Commence the maiden RC drilling campaign at the Linka Tungsten Project.
- Continue metallurgical optimisation work on primary mineralisation.
- Receive assays from TOMRA ore sorting test products.
- Receive Conquest stockpile phase 2 sampling results.

END

This announcement has been authorised for release by the Board of the Company.

Julian Woodcock
Managing Director and CEO
Viking Mines Limited

For further information, please contact:
Michaela Stanton-Cook - Company Secretary
Viking Mines Limited
+61 8 6245 0870

Learn more about Viking Mines via our investor hub [here](#).



Competent Persons Statement - Exploration Results

Information in this release that relates to Exploration Results is based on information compiled by Mr Julian Woodcock, who is a Member of the Australian Institute of Mining and Metallurgy (MAusIMM(CP) - 305446). Mr Woodcock is a full-time employee of Viking Mines Ltd. Mr Woodcock has sufficient experience which is relevant to the style of mineralisation and type of deposit under consideration and to the activity being undertaken to qualify as a Competent Person as defined in the 2012 Edition of the 'Australasian Code for Reporting of Exploration Results, Mineral Resources and Ore Reserves'. Mr Woodcock consents to the disclosure of the information in this report in the form and context in which it appears.

Forward-Looking Statements

This document may include forward-looking statements. Forward-looking statements include, but are not limited to, statements concerning Viking Mines Limited's planned exploration programme and other statements that are not historical facts. When used in this document, the words such as "could," "plan," "estimate," "expect," "intend," "may", "potential," "should," and similar expressions are forward-looking statements. Although Viking Mines Limited believes that its expectations reflected in these forward-looking statements are reasonable, such statements involve risks and uncertainties and no assurance can be given that actual results will be consistent with these forward-looking statements.

For personal use only



APPENDIX 1 - SAMPLE LOCATION AND ASSAY RESULTS TABLES

Sample/ Channel ID	Sample Type	Thickness	Grid system	East (m) NAD83 Zone 11N	North (m) NAD83 Zone 11N	RL	WO3 %
LKAG00001	Auger	1.58	NAD83z11N	514073	4353565	1782	0.06
LKAG00002	Auger	1.25	NAD83z11N	514090	4353566	1782	0.04
LKAG00003	Auger	0.75	NAD83z11N	514071	4353605	1780	0.07
LKAG00004	Auger	0.60	NAD83z11N	514051	4353645	1778	0.02
LKAG00005	Auger	1.20	NAD83z11N	514071	4353644	1778	0.03
LKAG00006	Auger	0.60	NAD83z11N	514033	4353683	1776	0.02
LKAG00007	Auger	1.40	NAD83z11N	514051	4353685	1776	0.02
LKAG00008	Auger	1.70	NAD83z11N	514071	4353685	1776	0.04
LKAG00009	Auger	1.10	NAD83z11N	514011	4353725	1774	0.02
LKAG00010	Auger	1.40	NAD83z11N	514032	4353726	1774	0.03
LKAG00011	Auger	1.00	NAD83z11N	514051	4353726	1774	0.02
LKAG00012	Auger	0.75	NAD83z11N	513970	4353766	1771	0.01
LKAG00013	Auger	0.40	NAD83z11N	513991	4353766	1772	0.04
LKAG00014	Auger	0.25	NAD83z11N	514013	4353765	1772	0.02
LKAG00015	Auger	0.45	NAD83z11N	514033	4353764	1773	0.01
LKAG00016	Auger	0.40	NAD83z11N	514051	4353765	1773	0.01
LKAG00017	Auger	0.60	NAD83z11N	513952	4353804	1770	0.01
LKAG00018	Auger	0.60	NAD83z11N	513971	4353806	1770	0.03
LKAG00019	Auger	0.60	NAD83z11N	513992	4353804	1770	0.03
LKAG00020	Auger	0.40	NAD83z11N	514012	4353806	1771	0.02
LKAG00021	Auger	0.60	NAD83z11N	514031	4353805	1771	0.01
LKAG00022	Auger	1.90	NAD83z11N	514052	4353806	1771	0.01
LKAG00023	Auger	0.25	NAD83z11N	513931	4353845	1769	0.02
LKAG00024	Auger	0.80	NAD83z11N	513952	4353843	1769	0.01
LKAG00025	Auger	0.85	NAD83z11N	513971	4353846	1769	0.02
LKAG00026	Auger	0.90	NAD83z11N	513992	4353846	1769	0.02
LKAG00027	Auger	0.45	NAD83z11N	514011	4353845	1769	0.01
LKAG00028	Auger	2.00	NAD83z11N	514032	4353846	1769	0.01
LKAG00029	Auger	0.40	NAD83z11N	514052	4353845	1769	0.02
LKAG00030	Auger	0.50	NAD83z11N	513951	4353884	1768	0.02
LKAG00031	Auger	0.50	NAD83z11N	513970	4353885	1768	0.03
LKAG00032	Auger	0.80	NAD83z11N	513990	4353885	1768	0.02
LKAG00033	Auger	0.90	NAD83z11N	514010	4353885	1768	0.00
LKAG00034	Auger	1.40	NAD83z11N	514032	4353885	1768	0.02
LKAG00035	Auger	0.85	NAD83z11N	514052	4353887	1768	0.04
LKAG00036	Auger	0.40	NAD83z11N	513952	4353925	1767	0.03
LKAG00037	Auger	0.55	NAD83z11N	513971	4353925	1767	0.02
LKAG00038	Auger	0.40	NAD83z11N	513993	4353926	1766	0.07
LKAG00039	Auger	0.10	NAD83z11N	514011	4353926	1767	0.01
LKAG00040	Auger	0.50	NAD83z11N	514032	4353924	1766	0.02
LKAG00041	Auger	1.10	NAD83z11N	514051	4353925	1766	0.01
LKAG00042	Auger	0.30	NAD83z11N	513972	4353966	1766	0.05
LKAG00043	Auger	0.80	NAD83z11N	513990	4353964	1766	0.03
LKAG00044	Auger	0.60	NAD83z11N	514011	4353965	1766	0.08
LKAG00045	Auger	0.50	NAD83z11N	514032	4353965	1765	0.04
LKAG00046	Auger	0.55	NAD83z11N	514052	4353966	1765	0.03
LKAG00047	Auger	0.40	NAD83z11N	513992	4354007	1765	0.03
LKAG00048	Auger	0.90	NAD83z11N	514012	4354005	1765	0.05
LKAG00049	Auger	2.00	NAD83z11N	514031	4354005	1765	0.07
LKAG00050	Auger	1.30	NAD83z11N	514052	4354005	1765	0.07
LKAG00051	Auger	0.55	NAD83z11N	514031	4354044	1765	0.10
LKAG00052	Auger	1.30	NAD83z11N	514052	4354045	1765	0.15

For personal use only



APPENDIX 2 - JORC CODE, 2012 EDITION - TABLE 1

JORC Table 1, Section 1 - Sampling Techniques and Data

Criteria	JORC Code explanation	Commentary
Sampling techniques	<i>Nature and quality of sampling (e.g. cut channels, random chips, or specific specialised industry standard measurement tools appropriate to the minerals under investigation, such as downhole gamma sondes, or handheld XRF instruments, etc.). These examples should not be taken as limiting the broad meaning of sampling.</i>	<u>Tailings Sampling</u> Auger samples were collected on a 20m (E-W) x 40m (N-S) grid across the historical tailings dam. At each sample location a single sample was collected through the full thickness of the dam (from surface to the base) with the base defined by gravelly material. For 2 sample locations a max thickness of 2m was attained with the base of the dam not reached. Collected samples were processed through a riffle splitter in the field to produce a smaller sample for assay. Each sample weighed between 2.6 to 4.4kg with an average weight of 3.4kg.
	<i>Include reference to measures taken to ensure sample representivity and the appropriate calibration of any measurement tools or systems used.</i>	<u>Tailings Sampling</u> Due to the tailings being a deposition of waste products from the processing plant a regular 20m x 40m grid pattern was selected to mitigate any sampling bias. Sampling the full tailings thickness at each sample location ensures representative nature of the tailings dam.
	<i>Aspects of the determination of mineralisation that are Material to the Public Report. In cases where 'industry standard' work has been done this would be relatively simple (e.g. 'reverse circulation drilling was used to obtain 1 m samples from which 3 kg was pulverised to produce a 30 g charge for fire assay'). In other cases more explanation may be required, such as where there is coarse gold that has inherent sampling problems. Unusual commodities or mineralisation types (e.g. submarine nodules) may warrant disclosure of detailed information</i>	<u>Tailings Sampling</u> Hand auger used to collect the samples using an ~2 inch auger bit. Full sample collected. Auger cuttings were collected on a tarp and visually inspected. Representative material was subsampled in the field using a model WE0589 riffle splitter with 0.5-inch (12.7-milimeter) chute widths featuring a hopper with a manual gate to hold the material, which was then released and divided by the chutes into two separate pans. The WE0589 is designed to meet American Society for Testing and Materials (ASTM) standards for material testing. Approximately 2 kilograms of material was weighed in the field at each location and retained for laboratory analysis, with an additional 5 kilograms of material collected for potential future evaluation. Sample bags containing the additional 5 kilograms of tailings material are currently being stored at WSP's Elko storage warehouse. Final sample weights ranged from 2.6kg to 4.4kg with an average weight of 3.4kg. Samples were delivered to ALS prep laboratory in Elko, Nevada and are prepared using lab method PREP-31BY which involves crushing to 70% less than 2mm and subsample of 1kg using a rotary splitter. The 1kg sample is then pulverised to better than 85% passing 75 microns. The pulverised samples are analysed using lab method ME-MS85h is used which is considered total using a lithium meta-borate fusion and ICP-MS finish.
Drilling techniques	<i>Drill type (e.g. core, reverse circulation, open-hole hammer, rotary air blast, auger, Bangka, sonic, etc.) and details (e.g. core diameter, triple or standard tube, depth of diamond tails, face-sampling bit or other type, whether core is oriented and if so, by what method, etc.).</i>	Hand auger with ~2inch auger bit diameter.
Drill sample recovery	<i>Method of recording and assessing core and chip sample recoveries and results assessed.</i>	100% with all products from the sample site extracted from the short auger holes.

For personal use only



For personal use only

Criteria	JORC Code explanation	Commentary
	<i>Measures taken to maximise sample recovery and ensure representative nature of the samples.</i>	Tarpaulin used to collect all sample product form the hole.
	<i>Whether a relationship exists between sample recovery and grade and whether sample bias may have occurred due to preferential loss/gain of fine/coarse material.</i>	Unknown.
Logging	<i>Whether core and chip samples have been geologically and geotechnically logged to a level of detail to support appropriate Mineral Resource estimation, mining studies and metallurgical studies.</i>	<u>Tailings Dam</u> Basic geological logs made of the material being sampled was recorded. No geotechnical logging has been completed. Sufficient data has been collected to support a potential future Mineral Resource Estimation of the tailings dam.
	<i>Whether logging is qualitative or quantitative in nature. Core (or costean, channel, etc.) photography.</i>	<u>Tailings Dam</u> Logging is qualitative in nature. Photographs taken of each sample.
	<i>The total length and percentage of the relevant intersections logged.</i>	<u>Tailings Dam</u> All samples collected were logged and descriptions recorded.
Subsampling techniques and sample preparation	<i>If core, whether cut or sawn and whether quarter, half or all core taken.</i>	Not applicable, no core drilling being reported.
	<i>If non-core, whether riffled, tube sampled, rotary split, etc. and whether sampled wet or dry.</i>	<u>Tailings Dam</u> Samples were collected dry. Representative material was subsampled in the field using a model WE0589 riffle splitter with 0.5-inch (12.7-milimeter) chute widths featuring a hopper with a manual gate to hold the material, which was then released and divided by the chutes into two separate pans. The WE0589 is designed to meet American Society for Testing and Materials (ASTM) standards for material testing. Samples were delivered to ALS laboratory in Elko, Nevada and are prepared using lab method PREP-31BY which involves crushing to 70% less than 2mm. A 1kg subsample is collected using a rotary splitter. The 1kg sample is then pulverised to better than 85% passing 75 microns.
	<i>For all sample types, the nature, quality and appropriateness of the sample preparation technique.</i>	<u>Tailings Dam</u> The sample preparation techniques are considered appropriate for the style of mineralisation and the grades expected.
	<i>Quality control procedures adopted for all subsampling stages to maximise representivity of samples.</i>	<u>Tailings Dam</u> No specific QAQC samples were utilised by Viking. The analytical laboratory inserted blanks and standards and undertook duplicate analysis on a selection of pulps. No issues were identified or reported by the laboratory.
	<i>Measures taken to ensure that the sampling is representative of the in-situ material collected, including for instance results for field duplicate/second-half sampling.</i>	<u>Tailings Dam</u> One field duplicates was taken which returned comparable results to the original sample. Laboratory repeat samples were undertaken and results were within acceptable ranges.



For personal use only

Criteria	JORC Code explanation	Commentary
	<i>Whether sample sizes are appropriate to the grain size of the material being sampled.</i>	<u>Tailings Dam</u> The grain size of the mineralisation has not been determined. The Competent Person considers the current methods and processes described as appropriate for this style of mineralisation due to the grade of mineralisation being reported and the homogenised nature of the material being sampled due to being a tailings product.
Quality of assay data and laboratory tests	<i>The nature, quality and appropriateness of the assaying and laboratory procedures used and whether the technique is considered partial or total.</i>	<u>Tailings Dam</u> Lab method ME-MS85h is used which utilises a lithium meta-borate fusion and ICP-MS finish. This technique is considered to be total.
	<i>For geophysical tools, spectrometers, handheld XRF instruments, etc., the parameters used in determining the analysis including instrument make and model, reading times, calibrations factors applied and their derivation, etc.</i>	No data has been reported of this type.
	<i>Nature of quality control procedures adopted (e.g. standards, blanks, duplicates, external laboratory checks) and whether acceptable levels of accuracy (i.e. lack of bias) and precision have been established.</i>	<u>Tailings Dam</u> No specific QAQC samples were utilised by Viking. The analytical laboratory inserted blanks and standards and undertook duplicate analysis on a selection of pulps. No issues were identified or reported by the laboratory and acceptable levels of accuracy and precision have been determined. No umpire analysis has been conducted which would be required to check for any laboratory bias.
Verification of sampling and assaying	<i>The verification of significant intersections by either independent or alternative company personnel.</i>	<u>Tailings Dam</u> Significant individual results have not been verified by either independent or alternative company personnel.
	<i>The use of twinned holes.</i>	1 duplicate sample location which reported consistent results with the original.
	<i>Documentation of primary data, data entry procedures, data verification, data storage (physical and electronic) protocols.</i>	<u>Tailings Dam</u> Samples are collected and bagged into calico bags and assigned a sample number from a ticket book. Sample details are recorded into a spreadsheet and then uploaded into Vikings Maxwell Dashed database.
	<i>Discuss any adjustment to assay data.</i>	<u>Tailings Dam</u> The laboratory reports tungsten in its elemental form as W%. This is converted in to Tungsten Oxide (WO ₃) using stoichiometric conversion factor by multiplying W% by 1.261.
Location of data points	<i>Accuracy and quality of surveys used to locate drillholes (collar and downhole surveys), trenches, mine workings and other locations used in Mineral Resource estimation.</i>	<u>Tailings Dam</u> All surface sample easting and northing locations are recorded using a hand held GPS and validated in GIS using surface imagery.
	<i>Specification of the grid system used.</i>	<u>Tailings Dam</u> The adopted grid system is NAD83/UTM Zone 11N and all data are reported in these coordinates.



For personal use only

Criteria	JORC Code explanation	Commentary
	<i>Quality and adequacy of topographic control.</i>	<u>Tailings Dam</u> Publicly available LiDAR data from the USGS is at 1 m accuracy and considered of a high quality and has been used to determine the elevation of the samples collected.
Data spacing and distribution	<i>Data spacing for reporting of Exploration Results.</i>	<u>Tailings Dam</u> Tailings samples have been collected at ~20m (E-W) x 40m (N-S) intervals. Sample locations shown on the map in the body of the report.
	<i>Whether the data spacing and distribution is sufficient to establish the degree of geological and grade continuity appropriate for the Mineral Resource and Ore Reserve estimation procedure(s) and classifications applied.</i>	<u>Tailings Dam</u> Due to the tailings dam being composed of mined and processed material, there is no direct association between grade of samples and location. Further technical evaluation of the data is required to confirm that the spacing is sufficient to confidently estimate the grade of the stockpile to JORC (2012), however at this time no Mineral Resource is being reported.
	<i>Whether sample compositing has been applied.</i>	<u>Tailings Dam</u> No data compositing has been applied. Samples collected were for full sample thickness of the sample location so have varying sample support.
Orientation of data in relation to geological structure	<i>Whether the orientation of sampling achieves unbiased sampling of possible structures and the extent to which this is known, considering the deposit type.</i>	<u>Tailings Dam</u> Not applicable, unconsolidated mined and processed material in a tailings dam.
	<i>If the relationship between the drilling orientation and the orientation of key mineralised structures is considered to have introduced a sampling bias, this should be assessed and reported if material.</i>	<u>Tailings Dam</u> Not applicable, unconsolidated mined and processed material in a tailings dam.
Sample security	<i>The measures taken to ensure sample security.</i>	<u>Tailings Dam</u> Samples were collected in the field by WSP (consultants to Viking) geologists and personally delivered to ALS Laboratories in Elko, Nevada, USA ensuring a robust chain of custody.
Audits or reviews	<i>The results of any audits or reviews of sampling techniques and data.</i>	<u>Tailings Dam</u> The Company has conducted no audits or reviews of the sampling techniques and data.



JORC 2012 Table 1, Section 2 - Reporting of Exploration Results

For personal use only

Criteria	JORC Code explanation	Commentary																																																		
Mineral tenement and land tenure status	<i>Type, reference name/number, location and ownership including agreements or material issues with third parties such as joint ventures, partnerships, overriding royalties, native title interests, historical sites, wilderness or national park and environmental settings.</i>	<p><u>Tenements and location</u></p> <p>The USA Tungsten Project Lode Mineral Claims are located in the state of Nevada in the USA. Details of the Mineral Claims are presented in the table below:</p> <table border="1" style="width: 100%; border-collapse: collapse;"> <thead> <tr> <th>Project</th> <th>State</th> <th>County</th> <th>Type</th> <th>Holder</th> <th>Quantity</th> </tr> </thead> <tbody> <tr> <td rowspan="2" style="text-align: center;">Linka</td> <td rowspan="2" style="text-align: center;">Nevada</td> <td rowspan="2" style="text-align: center;">Lander</td> <td rowspan="2" style="text-align: center;">Unpatented</td> <td style="text-align: center;">BLK Group LLC</td> <td style="text-align: center;">10</td> </tr> <tr> <td style="text-align: center;">Viking Tungsten LLC</td> <td style="text-align: center;">91</td> </tr> <tr> <td style="text-align: center;">Alpine</td> <td style="text-align: center;">Nevada</td> <td style="text-align: center;">Pershing</td> <td style="text-align: center;">Unpatented</td> <td style="text-align: center;">BLK Group LLC</td> <td style="text-align: center;">4</td> </tr> <tr> <td rowspan="2" style="text-align: center;">Long</td> <td rowspan="2" style="text-align: center;">Nevada</td> <td rowspan="2" style="text-align: center;">Pershing</td> <td rowspan="2" style="text-align: center;">Unpatented</td> <td style="text-align: center;">BLK Group LLC</td> <td style="text-align: center;">4</td> </tr> <tr> <td style="text-align: center;">Viking Tungsten LLC</td> <td style="text-align: center;">12</td> </tr> <tr> <td rowspan="2" style="text-align: center;">Ragged Top</td> <td rowspan="2" style="text-align: center;">Nevada</td> <td rowspan="2" style="text-align: center;">Pershing</td> <td rowspan="2" style="text-align: center;">Unpatented</td> <td style="text-align: center;">BLK Group LLC</td> <td style="text-align: center;">8</td> </tr> <tr> <td style="text-align: center;">Viking Tungsten LLC</td> <td style="text-align: center;">30</td> </tr> <tr> <td rowspan="2" style="text-align: center;">Terrell</td> <td rowspan="2" style="text-align: center;">Nevada</td> <td rowspan="2" style="text-align: center;">Nye</td> <td rowspan="2" style="text-align: center;">Unpatented</td> <td style="text-align: center;">BLK Group LLC</td> <td style="text-align: center;">10</td> </tr> <tr> <td style="text-align: center;">Viking Tungsten LLC</td> <td style="text-align: center;">56</td> </tr> <tr> <td style="text-align: center;">Victory</td> <td style="text-align: center;">Nevada</td> <td style="text-align: center;">Nye</td> <td style="text-align: center;">Unpatented</td> <td style="text-align: center;">Kircher Mine Development LLC</td> <td style="text-align: center;">8</td> </tr> </tbody> </table> <p><u>Third Party Interests</u></p> <p>Viking Mines Ltd has signed a binding term sheet to acquire a 100% interest in the project BLK Group LLC Mineral Claims and currently holds no ownership. Viking can acquire 100% interest in the claims by paying a total of US\$2.88M over a staged 7 year period. BLK group will retain a 2% NSR on all minerals recovered from mineral claims, and Viking retains the option to buy down 1% of the NSR for US\$2M.</p> <p><u>Native Title, Historical sites and Wilderness</u></p> <p>There are no known registered historical sites over the Project Mineral Claims. The Mineral Claims are registered with the Bureau of Land Management. The Linka Project has split federal agency responsibility with the Bureau of Land management managing approximately half of the claims and the US Forestry Service the other half. All the remaining projects fall under the jurisdiction of the BLM.</p>	Project	State	County	Type	Holder	Quantity	Linka	Nevada	Lander	Unpatented	BLK Group LLC	10	Viking Tungsten LLC	91	Alpine	Nevada	Pershing	Unpatented	BLK Group LLC	4	Long	Nevada	Pershing	Unpatented	BLK Group LLC	4	Viking Tungsten LLC	12	Ragged Top	Nevada	Pershing	Unpatented	BLK Group LLC	8	Viking Tungsten LLC	30	Terrell	Nevada	Nye	Unpatented	BLK Group LLC	10	Viking Tungsten LLC	56	Victory	Nevada	Nye	Unpatented	Kircher Mine Development LLC	8
	Project	State	County	Type	Holder	Quantity																																														
Linka	Nevada	Lander	Unpatented	BLK Group LLC	10																																															
				Viking Tungsten LLC	91																																															
Alpine	Nevada	Pershing	Unpatented	BLK Group LLC	4																																															
Long	Nevada	Pershing	Unpatented	BLK Group LLC	4																																															
				Viking Tungsten LLC	12																																															
Ragged Top	Nevada	Pershing	Unpatented	BLK Group LLC	8																																															
				Viking Tungsten LLC	30																																															
Terrell	Nevada	Nye	Unpatented	BLK Group LLC	10																																															
				Viking Tungsten LLC	56																																															
Victory	Nevada	Nye	Unpatented	Kircher Mine Development LLC	8																																															
	<i>The security of the tenure held at the time of reporting along with any known impediments to obtaining a licence to operate in the area.</i>	<p>The tenements are held in good standing by BLK Group LLC. To the best of Vikings knowledge, all annual claim payments are up to date. There are no known impediments to obtaining a licence to operate in the area. The US process is to file either a notice of intent or Plan of Operations to the responsible Federal Agency to obtain permits for drilling. The Company does not know of any reason why these permits would not be granted once the process is followed and the required bond payment made.</p>																																																		



For personal use only

Criteria	JORC Code explanation	Commentary
<p>Exploration done by other parties</p>	<p><i>Acknowledgment and appraisal of exploration by other parties.</i></p>	<p>Linka Mine: The area was staked in 1941 by Steve Linka of Austin, NV. In 1943-44, the mine produced 2,420 tons of ore averaging 0.69% WO₃. Consolidated Uranium Mines purchased the property in 1953, sunk a vertical shaft to 210 feet and drove approximately 1,000 feet of drifts and cross-cuts on the 150' level. Additional production included; 4,000 tons of ore averaging 0.98% WO₃ between 1951 and 1956 and 60,000 tons averaging 0.40% WO₃ between 1955 and 1956. The mine closed when the Government buying program ended. Mine workings include a 100' X 50' open-pit 25 feet deep, a 210' shaft with approximately 1,500 feet of drifts and cross-cuts. Shrinkage stopes extend from the 150' level to the surface (Stager and Tingley, 1988).</p> <p>In 1951, the Linka Mine was optioned to Hugh Chesser, Reno, NV. Hugh Chesser estimates shipments to Metals Reserve Corporation during WWII totalled 2,673 tons averaging 0.72 percent WO₃.</p> <p>Cache Creek Exploration held the properties in the early 1970's and conducted geological and geophysical programs. Duval Corporation optioned the properties in the mid-1970's, did geological studies but no drilling. Min-Ex drilled the property in 1977-78, with a total of 73 drillholes recorded (eight DDH and 64 wide-spread percussion drillholes). Note: Not all drillhole locations have been established, with 69 holes digitised and 1 hole estimated (total 70) and three percussion holes with unknown location. Exploration activity completed by Minex included drilling, surface and underground geological mapping and sampling, minor geophysical magnetic survey with 10,400 linear feet collected (inconclusive results), 6,500ft of bulldozer trenching and mapping.</p> <p>Stager and Tingley, 1988 estimate total production at the Linka mine at 25,670 units WO₃ (1943-56).</p> <p>Linka-Conquest Mine: The mine was discovered in 1941 but did not start production until 1943 when Gale Peer sunk a two-compartment inclined shaft to 130 feet. Workings off the shaft were at the 50 and 100 foot levels. During WW II mined and shipped 390 tons of ore averaging 2.7% WO₃. Additional shipments after the War averaged over 1.0% WO₃, but the tonnage is unknown. Last work on the 100' level exposed a zone 40' long, 12' to 20' wide, open to the northeast with a grade of <0.4% WO₃. Stager and Tingley, 1988, estimate total production at 5,208 units WO₃ (1944-56).</p> <p>Stager and Tingley, 1988 estimate total production at the Conquest mine to be 5,208 units WO₃ (1944-56)</p>
<p>Geology</p>	<p><i>Deposit type, geological setting and style of mineralisation</i></p>	<p>Linka Project: The area is underlain primarily by sedimentary rocks; it includes an outcrop of massive limestone of Ordovician age (Upper Plate) overlain in thrust contact by chert and shale of Ordovician Vinini Formation (Lower Plate). The limestone is intruded locally by granitic rocks of Jurassic age, and the tungsten deposits occur in the limestone along the granite contact (Stager and Tingley, 1988)</p> <p><u>Linka-Conquest Mine</u> - Granite intrusive rocks (Jg) and aplite dikes intrude cherts, shales and limy members of the Vinini Formation (Ov) in the Upper Plate of the Roberts Mountain Thrust. Scheelite-bearing skarn formed at the contact.</p> <p>Miocene age Bates Mountains tuff (Tbm) covers any extension of the mineralization to the northeast.</p>





For personal use only

Criteria	JORC Code explanation	Commentary
		<p><u>Linka Mine</u> - Scheelite occurs in lenses and tabular masses of skarn at the contact between Ordovician Antelope Valley Limestone (Lower Plate of the Roberts Mountain Thrust) and granitic intrusive rocks. The contact zone is cut by igneous dykes and high-angle faults. Exposures are poor. Granite rocks west of the contact zone are covered by post-mineral volcanic rock and sediments of Big Smokey Valley.</p> <p>Antelope Valley limestone east of the contact zone is nearly vertical. The contact zone is about 40 feet wide. Drilling in the 1970's shows that, at depth, the contact zone may flatten to the east, then steepen.</p> <p>Scheelite, with traces of chalcopyrite and molybdenite are the only ore minerals recognized.</p> <p><u>Linka-Hillside</u> - The Hillside incline shaft is about half way between the Conquest and Linka Mines. The shaft is inclined at ~47° and is approximately 100 feet deep. In 1978, when the area was visited by Richard Jones and Harold Bonham, geologists at the Nevada Bureau of Mines and Geology, there were no drifts or cross-cuts off the shaft. Here the rocks are more thinly bedded and contain more hornfels than sediments at the Linka shaft. Lenses of scheelite-bearing skarn in the Hanson Creek Fm are at the surface and a lens of mineralized skarn within the Antelope Valley Limestone occurs in the shaft (Stager and Tingley, 1988).</p>
<p>Drill hole Information</p>	<p>A summary of all information material to the understanding of the exploration results including a tabulation of the following information for all Material drill holes:</p> <ul style="list-style-type: none"> • easting and northing of the drill hole collar • elevation or RL (Reduced Level - elevation above sea level in metres) of the drill hole collar • dip and azimuth of the hole • down hole length and interception depth • hole length. <p>If the exclusion of this information is justified on the basis that the information is not Material and this exclusion does not detract from the understanding of the report, the Competent Person should clearly explain why this is the case.</p>	<p>See supporting data table in appendix and map in the body of the report.</p>
<p>Data aggregation methods</p>	<p>In reporting Exploration Results, weighting averaging techniques, maximum and/or minimum grade truncations (e.g., cutting of high grades) and cut-off grades are usually Material and should be stated.</p> <p>Where aggregate intercepts incorporate short lengths of high-grade results and longer lengths of low-grade results, the procedure used for such aggregation should be stated and some typical examples of such aggregations should be shown in detail.</p> <p>The assumptions used for any reporting of metal equivalent values should be clearly stated.</p>	<p>No top cuts have been applied by Viking. Each sample location is full intercept width. No data aggregation methods applied.</p>
<p>Relationship between mineralisation widths and</p>	<ul style="list-style-type: none"> • These relationships are particularly important in the reporting of Exploration Results. • If the geometry of the mineralisation with respect to the drill hole angle is known, its nature should be reported. 	<p><u>Tailings Dam</u></p> <p>True width confirmed as the thickness of the tailings dam.</p>





For personal use only

Criteria	JORC Code explanation	Commentary
intercept lengths	<ul style="list-style-type: none"> If it is not known and only the down hole lengths are reported, there should be a clear statement to this effect (e.g. 'down hole length, true width not known'). 	
Diagrams	Appropriate maps and sections (with scales) and tabulations of intercepts should be included for any significant discovery being reported. These should include, but not be limited to a plan view of drill hole collar locations and appropriate sectional views.	Map of sample locations in the body of the report.
Balanced reporting	Where comprehensive reporting of all Exploration Results is not practicable, representative reporting of both low and high grades and/or widths should be practiced to avoid misleading reporting of Exploration Results.	All appropriate information is included in the report.
Other substantive exploration data	Other exploration data, if meaningful and material, should be reported including (but not limited to): geological observations; geophysical survey results; geochemical survey results; bulk samples - size and method of treatment; metallurgical test results; bulk density, groundwater, geotechnical and rock characteristics; potential deleterious or contaminating substances.	No other substantial exploration data is considered meaningful or material in making this announcement. All relevant information is included in the body of the report.
Further work	The nature and scale of planned further work (e.g. tests for lateral extensions or depth extensions or large-scale step-out drilling). Diagrams clearly highlighting the areas of possible extensions, including the main geological interpretations and future drilling areas, provided this information is not commercially sensitive.	<p>Maiden drilling programme is scheduled to commence at the project in July 2026 with earthworks and drill site preparation, followed by drilling. Additional activities underway are detailed in the report.</p> <p>Other projects:</p> <p>A primary focus is to identify and source any and all available historical data on the projects to allow planning of future sampling and drilling programmes. On planning of any drilling programmes a Notice of Intent or Plan of Operations will be prepared and submitted to the relevant Federal authority.</p>