

LINKA TUNGSTEN PROJECT RECOVERY IMPROVED TO 76.0% AT 56.9% WO₃ GRADE

- Combined gravity and cleaner flotation circuit testwork improves recovery to 76.0% whilst achieving a 56.9% WO₃ concentrate grade from a 1.2% WO₃ feed grade.
- Exceeds the >70% recovery >50% grade target set in the 28 May 2026 release.
- Industry-leading results represents a 1.27x step-change improvement in recovery from the previously reported results, (increasing from 59.8% to 76.0%).¹
- Flotation testwork continuing to derisk the process flowsheet, with significant advancements now made on both the gravity and flotation circuits.
- Flotation testwork continues on gravity tails from the larger 10 kg sample to determine if further grade and recovery improvements can be made.
- Results feed directly into the conceptual processing study (CAPEX/OPEX) underway with Mineral Technologies. Simple, low-CAPEX, gravity-led flowsheet using simple proven technologies.²
- Metallurgical pathway now significantly de-risked ahead of Viking's maiden drilling programme at Linka, targeted to commence late June 2026 quarter.
- Western tungsten pricing remains near all time highs, with CIF Rotterdam 88.5% Ammonium Paratungstate (APT) at US\$3,100/mtu³ (US\$305,000/t).

For personal use only

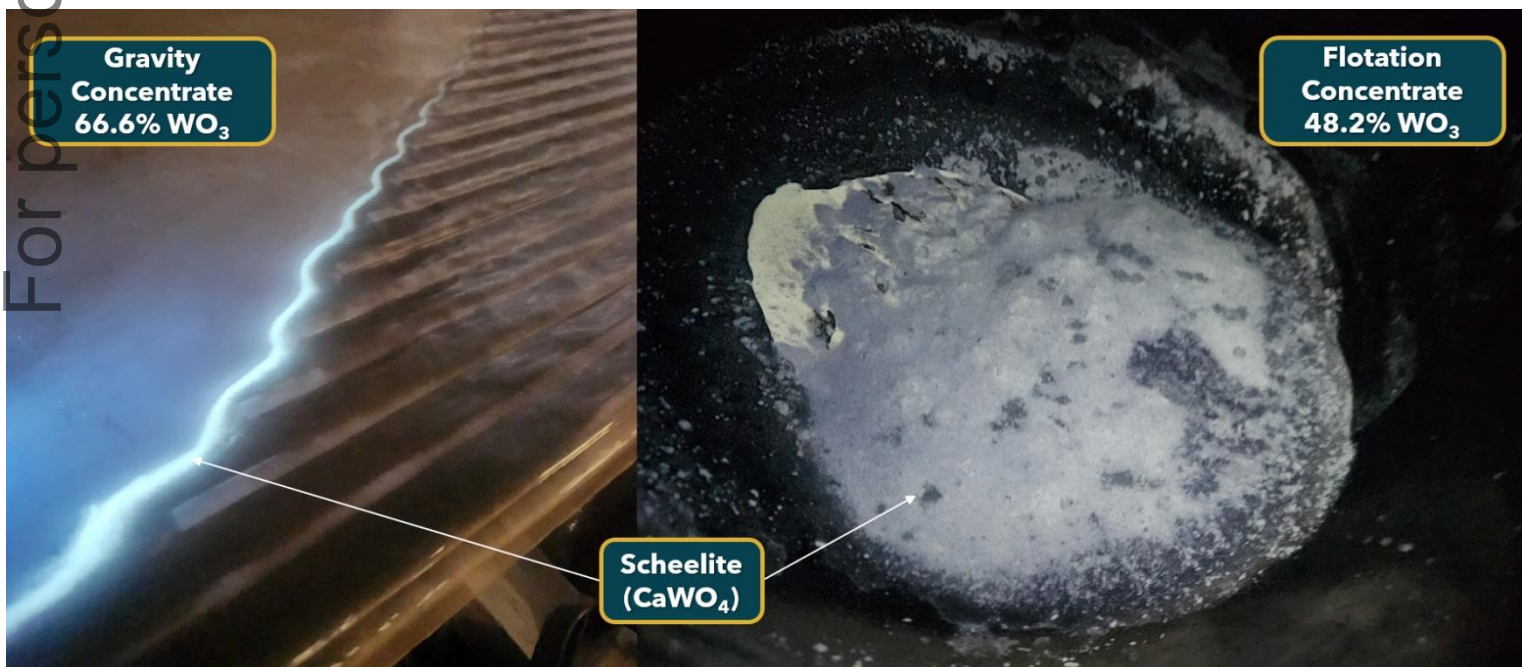


Figure 1; Photo showing separation of scheelite (white) from waste minerals (dark brown) during Wilfley table gravity concentration stage. Wilfley concentrate feeds into the Mozley table cleaning stage. Assayed grade of Mozley table concentrate is 66.6% WO₃. Flotation concentrate grading 48.2% WO₃ is combined with gravity concentrate to produce final concentrate grade of 56.9% WO₃.

¹ ASX Announcement 28 May 2026: Linka Metallurgy Success Delivers 62.5% WO₃ at 59.8% Recovery

² ASX Announcement 27 April 2026: Conceptual Process Established for Linka Tungsten Project.

³ Source: Shanghai Metal Market <https://www.metal.com/tungsten> 5th June 2026



Viking Mines Limited (ASX: VKA, OTC: VKALF) ("Viking" or "the Company") is pleased to report another major step forward in metallurgical testwork at the Linka Tungsten Project in Nevada, USA.

Follow-up flotation testwork focussed on optimisation of the flotation stage has delivered yet another excellent outcome with a combined gravity-plus-flotation concentrate **delivering a 56.9% WO₃ concentrate grade at 76.0% recovery** - a step-change improvement from the 59.8% recovery reported less than two weeks ago¹ (representing a 1.27x uplift from previous results).

Commenting on the significance of these results, Viking Mines Managing Director & CEO Julian Woodcock said:

"We set an objective to obtain >70% recovery >50% WO₃ grade, which we have now achieved.

"The metallurgical testwork continues to deliver improvements for the Linka Project, with the combined gravity and cleaner flotation testwork circuit is now delivering 56.9% WO₃ concentrate grade at an industry leading 76.0% recovery - a meaningful 1.27x uplift in recovery from the 59.8% reported less than 2 weeks ago.

"We've deliberately kept the flowsheet simple, using proven gravity and flotation technologies, which we believe positions Linka for a low-capital development Project. These results feed directly into the conceptual processing study underway with Mineral Technologies, which will provide our first capital and operating cost estimates.

"With our maiden drilling programme scheduled for the June quarter, we're advancing the metallurgical and resource workstreams in parallel to move the Project forward as efficiently as possible."

LINKA GRAVITY CLEANER AND ROUGHER FLOTATION TESTWORK

Ongoing testwork on a 10 kg subset of the Linka Pit sample LKMET0004 has built on the recently reported gravity and flotation results, with the further optimisation testwork improving rougher/cleaner flotation circuit performance conducted on the gravity tails (Figure 2). Phase 2 testwork grade and recovery improvements are illustrated in Figure 3. Key findings are summarised below:

- **Combined gravity and flotation recovery has significantly improved to 76.0%** (from 59.8%), representing a 1.27x uplift.
- **Premium concentrate (>50% WO₃) maintained, grading 56.9% WO₃.**
- Attained via combined gravity concentrate (66.6% WO₃ at 42.16% recovery) plus flotation concentrate (48.2% WO₃ at 33.89% recovery) from a 1.2% sample feed grade.
- **Rougher and cleaner flotation recovery doubled to 33.89%** (from 17.1%).
- Viking continues to test different flotation conditions to maximise final flotation concentrate recovery and grades and determine if >80% recovery >50% WO₃ grade can be attained.



For personal use only

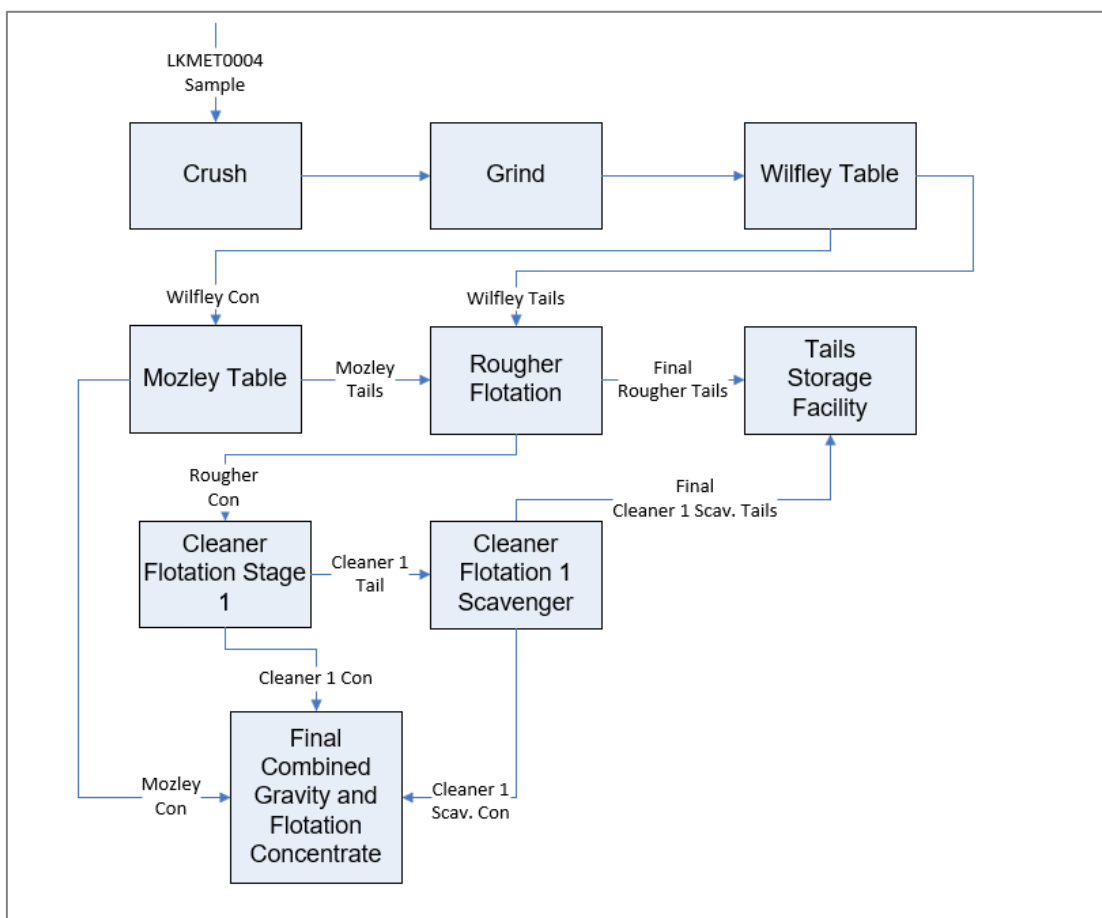


Figure 2; Gravity and rougher-cleaner flotation flowsheet which achieved a final gravity concentrate of 66.6% WO₃ grade and 42.16% recovery. Achieved cleaner 1 concentrate grade of 48.2% WO₃ and 33.89% recovery. Combined gravity and cleaner 1 concentrate achieved the final 56.9% WO₃ grade at 76.0% recovery.

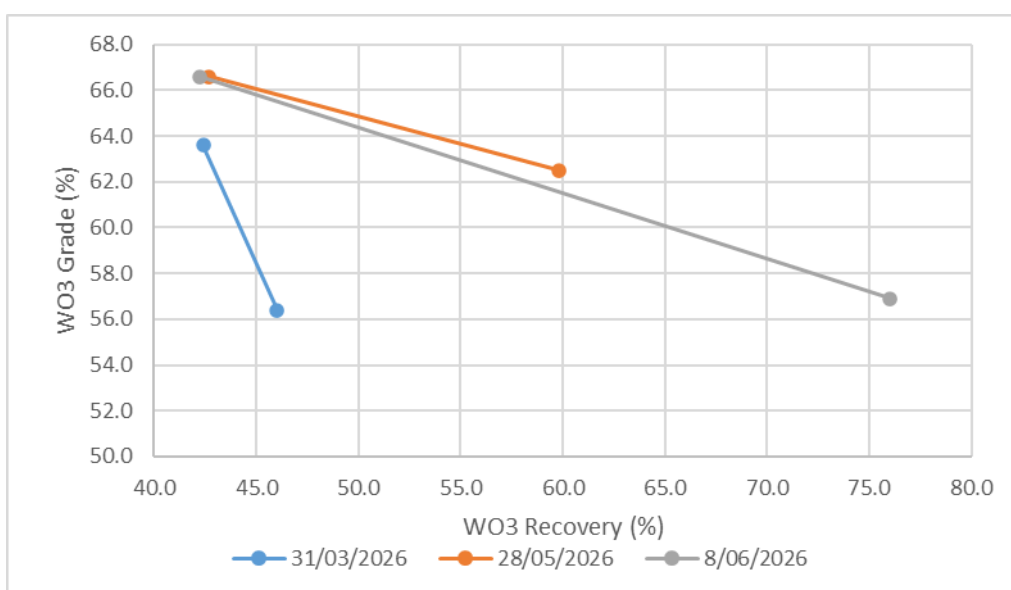


Figure 3; Gravity only and combined gravity and flotation recovery improvement points illustrates the gravity improvement performance between the 31/3/26 and 28/5/26 announcements. Gravity and flotation recovery improvements at a >50% premium WO₃ concentrate are shown between this announcement (8/6/26) and the 28/5/26 announcement.



For personal use only

RECOVERY STEP-UP FROM COMBINED CIRCUIT

Rougher and cleaner flotation optimisation testwork conducted on the gravity tails lifts total recovery to 76.0% at a combined premium concentrate grade of 56.9% WO₃, comfortably above the >50% WO₃ saleable threshold for scheelite concentrate. This is a meaningful 1.27x step up from the most recently announced 62.5% WO₃ at 59.8% recovery.

Continuing flotation reagent regime optimisation is being finalised for this testwork phase, with the objective of further lifting flotation recovery to an ambitious 80%, while holding the combined concentrate grade above the >50% WO₃ saleable threshold. Updates will be reported to the market as the testwork is completed.

A VALIDATED, LOW-CAPEX PROCESSING PATHWAY

The ongoing metallurgical testwork program further reinforces the "Rapid-Start" model that prioritises low-cost physical separation over complex chemical processing. Refinement of the gravity circuit on a 10 kg sample lifted the standalone gravity concentrate grade to 66.6% WO₃.

The ability to produce a premium scheelite product through gravity alone - replicated at five-fold larger scale - is a significant competitive advantage, enabling a simplified, modular plant design that can be permitted and built in shorter timeframes compared to traditional on-site established facilities. These results are being incorporated into the conceptual processing study underway with Mineral Technologies to refine CAPEX estimates and plant design.

STRATEGIC POSITIONING IN THE US SUPPLY CHAIN

With global APT prices at US\$3,100/mtu³, the ability to produce high-grade concentrates via a low-CAPEX model in Nevada establishes Linka as an increasingly strategic asset. As the US Department of War and domestic manufacturers seek to secure "NATO-grade" tungsten supply outside of traditional channels, Viking is positioning as a primary onshore solution.

HIGH-VALUE PRODUCT

The value of tungsten bearing ores has significantly increased in 2026. Tungsten price is most commonly quoted as ammonium paratungstate (APT), in metric tonne units (mtu), equivalent to 10kg of APT. APT producers utilise scheelite and wolframite concentrates as feedstocks, purchasing these concentrates at between ~30% to ~50% of the APT price. The payability achieved for concentrates is influenced by its WO₃ grade, the level of deleterious elements and other factors, the higher-grade, with cleaner concentrates attracting stronger payability.

Concentrate value is therefore a function of two market variables: the prevailing APT price and the grade and quality of the concentrate produced. The inherent per tonne value of tungsten bearing ores can be determined by multiplying grade x metallurgical recovery x \$mtu price.

As a recent market example, EQ Resources (ASX:EQR) recently reported attaining US\$1,189/mtu for concentrates from their Mt Carbine operations in the March 2026 quarter⁴.

⁴ EQ Resources ASX Announcement "Quarterly Activities/Appendix 5B Cash Flow Report-March 2026", 28 April 2026.



NEXT STEPS

With the gravity and rougher/cleaner flotation operating conditions now established, the metallurgical programme is moving into optimisation and variability testing across the four bulk samples previously collected from the Linka Project area⁵. Key next steps include:

- **Continuing Flotation Reagent Optimisation:** refinement of the rougher/cleaner flotation regime to maximise flotation recovery while holding combined concentrate grade above the >50% WO₃ saleable threshold and targeting >80% recovery.
- **Variability Testing:** application of the optimised gravity and flotation conditions to the remaining bulk samples (Conquest, Hillside and Stockpile) to confirm flowsheet performance for samples collected from across the Project area.
- **Comminution Testing:** detailed comminution test suite on fresh samples to define crushing and grinding energy requirements and ore abrasion properties, feeding into plant design and OPEX estimations.
- **Gravity Enhancements:** Ongoing gravity separation tests at coarser grind sizes.
- **Ore Sorting:** Completion of testing of a recently collected ~40kg sample by ore sorting technology.
- **Modular Blueprint:** finalising the conceptual processing study underway with Mineral Technologies.
- **Geological Understanding:** 3D geology model completion using recently digitised mapping and drillhole data.
- **Maiden Drilling:** with drill permitting now approved, the maiden drill programme at Linka is scheduled to commence in the June 2026 quarter with earthworks and drill site preparation, followed by drilling.

END

This announcement has been authorised for release by the Board of the Company.

Julian Woodcock
Managing Director and CEO
Viking Mines Limited

For further information, please contact:
Michaela Stanton-Cook - Company Secretary
Viking Mines Limited
+61 8 6245 0870

Learn more about Viking Mines via our investor hub [here](#).

⁵ ASX Announcement 14 January 2026: High grade assays up to 1.3% WO₃ from Linka Tungsten Project



Competent Persons Statement - Exploration Results

Information in this release that relates to Exploration Results is based on information compiled by Mr Julian Woodcock, who is a Member of the Australian Institute of Mining and Metallurgy (MAusIMM(CP) - 305446). Mr Woodcock is a full-time employee of Viking Mines Ltd. Mr Woodcock has sufficient experience which is relevant to the style of mineralisation and type of deposit under consideration and to the activity being undertaken to qualify as a Competent Person as defined in the 2012 Edition of the 'Australasian Code for Reporting of Exploration Results, Mineral Resources and Ore Reserves'. Mr Woodcock consents to the disclosure of the information in this report in the form and context in which it appears.

Competent Persons Statement - Metallurgical Testwork

The information in this announcement that relates to Exploration Results from metallurgical test work is based on, and fairly represents, information and supporting documentation compiled by Mr Peter Adamini, BSc (Mineral Science and Chemistry), who is a Member of The Australasian Institute of Mining and Metallurgy (AusIMM). Mr Adamini is a full-time employee of SGS Australia owned Independent Metallurgical Operations Pty Ltd, a wholly owned subsidiary of SGS Australia Holdings Pty Ltd, and has sufficient experience that is relevant to the style of mineralisation and type of deposit under consideration and to the activity being undertaken to qualify as a Competent Person as defined in the 2012 Edition of the 'Australasian Code for Reporting of Exploration Results, Mineral Resources and Ore Reserves'. Mr. Adamini is an independent consultant engaged by Viking Mines Limited for metallurgical representation. Mr Adamini consents to the disclosure of the information in this report in the form and context in which it appears.

Forward-Looking Statements

This document may include forward-looking statements. Forward-looking statements include, but are not limited to, statements concerning Viking Mines Limited's planned exploration programme and other statements that are not historical facts. When used in this document, the words such as "could," "plan," "estimate," "expect," "intend," "may", "potential," "should," and similar expressions are forward-looking statements. Although Viking Mines Limited believes that its expectations reflected in these forward-looking statements are reasonable, such statements involve risks and uncertainties and no assurance can be given that actual results will be consistent with these forward-looking statements.

For personal use only



APPENDIX 1 - JORC CODE, 2012 EDITION - TABLE 1

JORC Table 1, Section 1 - Sampling Techniques and Data

Criteria	JORC Code explanation	Commentary
Sampling techniques	<i>Nature and quality of sampling (e.g. cut channels, random chips, or specific specialised industry standard measurement tools appropriate to the minerals under investigation, such as downhole gamma sondes, or handheld XRF instruments, etc.). These examples should not be taken as limiting the broad meaning of sampling.</i>	<u>Metallurgical Sample</u> Collection of loose rocks on surface from each of the 4 sample locations using an ultraviolet light (254nm wavelength) to identify mineralised material to identify mineralised material. Samples collected were bagged in to calico and polyweave bags and subsequently broken into smaller pieces to aid transportation to the metallurgical laboratory and facilitate processing by the metallurgical laboratory.
	<i>Include reference to measures taken to ensure sample representivity and the appropriate calibration of any measurement tools or systems used.</i>	<u>Metallurgical Sample</u> Samples are deemed representative of the target mineralisation being sampled as they were identified using an ultraviolet light which confirmed scheelite bearing mineralisation was sourced. It is unknown if the samples are representative of the original insitu material due to rocks being collected from loose material on surface and not being insitu.
	<i>Aspects of the determination of mineralisation that are Material to the Public Report. In cases where 'industry standard' work has been done this would be relatively simple (e.g. 'reverse circulation drilling was used to obtain 1 m samples from which 3 kg was pulverised to produce a 30 g charge for fire assay'). In other cases more explanation may be required, such as where there is coarse gold that has inherent sampling problems. Unusual commodities or mineralisation types (e.g. submarine nodules) may warrant disclosure of detailed information</i>	<u>Metallurgical Sample</u> Loose rocks collected form surface and delivered to the metallurgical laboratory in 26 individually numbered calico bags. Samples which corresponded to the parent (composite) sample were prepared by the laboratory by combining contents from the designated bags, stage crushing to <3.35 mm, passing through a riffle splitter multiple times and blending to homogenise. This blended sample was further processed through the riffle splitter to generate a representative sub-sample. This sub-sample was then pulverised to minimum P80 <75 µm prior to being submitted for assay. This sub-sample is considered accurate with sample mineralogy not expected to have caused sampling issues.
Drilling techniques	<i>Drill type (e.g. core, reverse circulation, open-hole hammer, rotary air blast, auger, Bangka, sonic, etc.) and details (e.g. core diameter, triple or standard tube, depth of diamond tails, face-sampling bit or other type, whether core is oriented and if so, by what method, etc.).</i>	Not applicable, no drilling being reported.
Drill sample recovery	<i>Method of recording and assessing core and chip sample recoveries and results assessed.</i>	Not applicable, no drilling being reported.
	<i>Measures taken to maximise sample recovery and ensure representative nature of the samples.</i>	Not applicable, no drilling being reported.
	<i>Whether a relationship exists between sample recovery and grade and whether sample bias may have occurred due to preferential loss/gain of fine/coarse material.</i>	Not applicable, no drilling being reported.
Logging	<i>Whether core and chip samples have been geologically and geotechnically logged to a level of detail to support appropriate Mineral Resource estimation, mining studies and metallurgical studies.</i>	Not applicable, no drilling being reported.



For personal use only

Criteria	JORC Code explanation	Commentary
	Whether logging is qualitative or quantitative in nature. Core (or costean, channel, etc.) photography.	Not applicable, no drilling being reported.
	The total length and percentage of the relevant intersections logged.	Not applicable, no drilling being reported.
Subsampling techniques and sample preparation	If core, whether cut or sawn and whether quarter, half or all core taken.	Not applicable, no drilling being reported.
	If non-core, whether riffled, tube sampled, rotary split, etc. and whether sampled wet or dry.	<u>Metallurgical Sample</u> Samples were collected dry. No splitting was undertaken in the field. In the metallurgical laboratory, the sample was prepared by stage crushing to <3.35 mm and then homogenised and sub-sampled using a riffle splitter.
	For all sample types, the nature, quality and appropriateness of the sample preparation technique.	<u>Metallurgical Sample</u> The sample preparation, blending and sub-sampling techniques are appropriate for this material's mineralogical makeup.
	Quality control procedures adopted for all subsampling stages to maximise representivity of samples.	<u>Metallurgical Sample</u> No QAQC samples were utilised by Viking. The metallurgical laboratory inserted blanks and standards which contained WO ₃ grades similar to the assayed samples WO ₃ head grades.
	Measures taken to ensure that the sampling is representative of the in-situ material collected, including for instance results for field duplicate/second-half sampling.	<u>Metallurgical Sample</u> Insitu material has not been sampled. No duplicates taken. On completion of the metallurgical testwork programme, the metallurgical balance will be used to verify the head grade assays.
	Whether sample sizes are appropriate to the grain size of the material being sampled.	The Competent Person considers the current methods and processes described as appropriate for this style of mineralisation due to the grade of mineralisation being reported. Sample size of the metallurgical sample is appropriate both due the grades being grade of the mineralisation and the large samples collected.
Quality of assay data and laboratory tests	The nature, quality and appropriateness of the assaying and laboratory procedures used and whether the technique is considered partial or total.	<u>Metallurgical Sample</u> The assaying technique utilised a lithium metaborate/lithium tetraborate (50/50) fusion melt followed by nitric acid dissolution with the resulting solution analysed by an ICP OES/MS. This technique is considered to be total.
	For geophysical tools, spectrometers, handheld XRF instruments, etc., the parameters used in determining the analysis including instrument make and model, reading times, calibrations factors applied and their derivation, etc.	No data has been reported of this type.
	Nature of quality control procedures adopted (e.g. standards, blanks, duplicates, external laboratory checks) and whether acceptable levels of accuracy (i.e. lack of bias) and precision have been established.	<u>Metallurgical Sample</u> No QAQC samples were utilised by Viking. The metallurgical laboratory inserted blanks and standards which contained WO ₃ grades similar to the Viking's assayed samples WO ₃ head grades. This achieved acceptable levels of accuracy and removed bias.
Verification of sampling and assaying	The verification of significant intersections by either independent or alternative company personnel.	Not applicable, no drilling being reported.
	The use of twinned holes.	Not applicable, no drilling being reported.
	Documentation of primary data, data entry procedures, data verification, data storage (physical and electronic) protocols.	<u>Metallurgical Sample</u> Samples are bagged in calico bags and assigned a sample number from a ticket book. Sample details are recorded in a spreadsheet and then uploaded in to Viking's Maxwell Dashed database.
	Discuss any adjustment to assay data.	No adjustment is made to the assay data.



For personal use only

Criteria	JORC Code explanation	Commentary
Location of data points	<i>Accuracy and quality of surveys used to locate drillholes (collar and downhole surveys), trenches, mine workings and other locations used in Mineral Resource estimation.</i>	<u>Metallurgical Sample</u> No drilling being reported. Sample locations provided are approximate area where the samples were collected from. Composite sample collected for each area is composed of loose rocks collected from within an approximate 15m radius of the reported sample coordinate.
	<i>Specification of the grid system used.</i>	The adopted grid system is NAD83/UTM Zone 12N and all data are reported in these coordinates.
	<i>Quality and adequacy of topographic control.</i>	Publicly available LiDAR data from the USGS is at 1m accuracy and considered of a high quality and has been used to determine the elevation of the samples collected.
Data spacing and distribution	<i>Data spacing for reporting of Exploration Results.</i>	Not applicable.
	<i>Whether the data spacing and distribution is sufficient to establish the degree of geological and grade continuity appropriate for the Mineral Resource and Ore Reserve estimation procedure(s) and classifications applied.</i>	Not applicable.
	<i>Whether sample compositing has been applied.</i>	<u>Metallurgical Sample</u> Sample assay results have not been composited. Physical samples collected are considered a composite sample via the collection of multiple loose rocks from the sample locations to provide sufficient material for the metallurgical testwork programme.
Orientation of data in relation to geological structure	<i>Whether the orientation of sampling achieves unbiased sampling of possible structures and the extent to which this is known, considering the deposit type.</i>	<u>Metallurgical Sample</u> Unknown, the mineralisation sampled was not in situ.
	<i>If the relationship between the drilling orientation and the orientation of key mineralised structures is considered to have introduced a sampling bias, this should be assessed and reported if material.</i>	Not applicable, no drilling being reported.
Sample security	<i>The measures taken to ensure sample security.</i>	<u>Metallurgical Sample</u> Samples were collected in the field by Viking geologists and personally delivered to Base Met Labs in Tucson, Arizona.
Audits or reviews	<i>The results of any audits or reviews of sampling techniques and data.</i>	The Company has conducted no audits or reviews of the sampling techniques and data.



JORC 2012 Table 1, Section 2 - Reporting of Exploration Results

For personal use only

Criteria	JORC Code explanation	Commentary																																																		
Mineral tenement and land tenure status	<i>Type, reference name/number, location and ownership including agreements or material issues with third parties such as joint ventures, partnerships, overriding royalties, native title interests, historical sites, wilderness or national park and environmental settings.</i>	<p><u>Tenements and location</u> The USA Tungsten Project Lode Mineral Claims are located in the state of Nevada in the USA. Details of the Mineral Claims are presented in the table below:</p> <table border="1" style="width: 100%; border-collapse: collapse;"> <thead> <tr> <th>Project</th> <th>State</th> <th>County</th> <th>Type</th> <th>Holder</th> <th>Quantity</th> </tr> </thead> <tbody> <tr> <td rowspan="2" style="text-align: center;">Linka</td> <td rowspan="2" style="text-align: center;">Nevada</td> <td rowspan="2" style="text-align: center;">Lander</td> <td rowspan="2" style="text-align: center;">Unpatented</td> <td style="text-align: center;">BLK Group LLC</td> <td style="text-align: center;">10</td> </tr> <tr> <td style="text-align: center;">Viking Tungsten LLC</td> <td style="text-align: center;">91</td> </tr> <tr> <td style="text-align: center;">Alpine</td> <td style="text-align: center;">Nevada</td> <td style="text-align: center;">Pershing</td> <td style="text-align: center;">Unpatented</td> <td style="text-align: center;">BLK Group LLC</td> <td style="text-align: center;">4</td> </tr> <tr> <td rowspan="2" style="text-align: center;">Long</td> <td rowspan="2" style="text-align: center;">Nevada</td> <td rowspan="2" style="text-align: center;">Pershing</td> <td rowspan="2" style="text-align: center;">Unpatented</td> <td style="text-align: center;">BLK Group LLC</td> <td style="text-align: center;">4</td> </tr> <tr> <td style="text-align: center;">Viking Tungsten LLC</td> <td style="text-align: center;">12</td> </tr> <tr> <td rowspan="2" style="text-align: center;">Ragged Top</td> <td rowspan="2" style="text-align: center;">Nevada</td> <td rowspan="2" style="text-align: center;">Pershing</td> <td rowspan="2" style="text-align: center;">Unpatented</td> <td style="text-align: center;">BLK Group LLC</td> <td style="text-align: center;">8</td> </tr> <tr> <td style="text-align: center;">Viking Tungsten LLC</td> <td style="text-align: center;">30</td> </tr> <tr> <td rowspan="2" style="text-align: center;">Terrell</td> <td rowspan="2" style="text-align: center;">Nevada</td> <td rowspan="2" style="text-align: center;">Nye</td> <td rowspan="2" style="text-align: center;">Unpatented</td> <td style="text-align: center;">BLK Group LLC</td> <td style="text-align: center;">10</td> </tr> <tr> <td style="text-align: center;">Viking Tungsten LLC</td> <td style="text-align: center;">56</td> </tr> <tr> <td style="text-align: center;">Victory</td> <td style="text-align: center;">Nevada</td> <td style="text-align: center;">Nye</td> <td style="text-align: center;">Unpatented</td> <td style="text-align: center;">Kircher Mine Development LLC</td> <td style="text-align: center;">8</td> </tr> </tbody> </table> <p><u>Third Party Interests</u> Viking Mines Ltd has signed a binding term sheet to acquire a 100% interest in the project BLK Group LLC Mineral Claims and currently holds no ownership. Viking can acquire 100% interest in the claims by paying a total of US\$2.88M over a staged 7 year period. BLK group will retain a 2% NSR on all minerals recovered from mineral claims, and Viking retains the option to buy down 1% of the NSR for US\$2M.</p> <p><u>Native Title, Historical sites and Wilderness</u> There are no known registered historical sites over the Project Mineral Claims. The Mineral Claims are registered with the Bureau of Land Management. The Linka Project has split federal agency responsibility with the Bureau of Land management managing approximately half of the claims and the US Forestry Service the other half. All the remaining projects fall under the jurisdiction of the BLM.</p>	Project	State	County	Type	Holder	Quantity	Linka	Nevada	Lander	Unpatented	BLK Group LLC	10	Viking Tungsten LLC	91	Alpine	Nevada	Pershing	Unpatented	BLK Group LLC	4	Long	Nevada	Pershing	Unpatented	BLK Group LLC	4	Viking Tungsten LLC	12	Ragged Top	Nevada	Pershing	Unpatented	BLK Group LLC	8	Viking Tungsten LLC	30	Terrell	Nevada	Nye	Unpatented	BLK Group LLC	10	Viking Tungsten LLC	56	Victory	Nevada	Nye	Unpatented	Kircher Mine Development LLC	8
	Project	State	County	Type	Holder	Quantity																																														
Linka	Nevada	Lander	Unpatented	BLK Group LLC	10																																															
				Viking Tungsten LLC	91																																															
Alpine	Nevada	Pershing	Unpatented	BLK Group LLC	4																																															
Long	Nevada	Pershing	Unpatented	BLK Group LLC	4																																															
				Viking Tungsten LLC	12																																															
Ragged Top	Nevada	Pershing	Unpatented	BLK Group LLC	8																																															
				Viking Tungsten LLC	30																																															
Terrell	Nevada	Nye	Unpatented	BLK Group LLC	10																																															
				Viking Tungsten LLC	56																																															
Victory	Nevada	Nye	Unpatented	Kircher Mine Development LLC	8																																															
	<i>The security of the tenure held at the time of reporting along with any known impediments to obtaining a licence to operate in the area.</i>	The tenements are held in good standing by BLK Group LLC. To the best of Vikings knowledge, all annual claim payments are up to date. There are no known impediments to obtaining a licence to operate in the area. The US process is to file either a notice of intent or Plan of Operations to the responsible Federal Agency to obtain permits for drilling. The Company does not know of any reason why these permits would not be granted once the process is followed and the required bond payment made.																																																		
Exploration done by other parties	<i>Acknowledgment and appraisal of exploration by other parties.</i>	Linka Mine: The area was staked in 1941 by Steve Linka of Austin, NV. In 1943-44, the mine produced 2,420 tons of ore averaging 0.69% WO ₃ . Consolidated Uranium Mines purchased the property in 1953, sunk a vertical shaft to 210 feet and drove approximately 1,000 feet of drifts and cross-cuts on the 150' level. Additional production included; 4,000 tons of ore averaging 0.98% WO ₃ between 1951 and 1956 and 60,000 tons averaging 0.40% WO ₃ between 1955 and 1956. The mine closed when the Government buying program ended. Mine workings include a 100' X 50' open-pit 25 feet deep, a 210' shaft with approximately 1,500 feet of drifts and cross-cuts. Shrinkage stopes extend from the 150' level to the surface (Stager and Tingley, 1988). In 1951, the Linka Mine was optioned to Hugh Chesser, Reno, NV. Hugh Chesser estimates shipments to Metals Reserve Corporation during WWII totalled 2,673 tons averaging 0.72 percent WO ₃ .																																																		





For personal use only

Criteria	JORC Code explanation	Commentary
		<p>Cache Creek Exploration held the properties in the early 1970's and conducted geological and geophysical programs. Duval Corporation optioned the properties in the mid-1970's, did geological studies but no drilling. Min-Ex drilled the property in 1977-78, with a total of 73 drillholes recorded (eight DDH and 64 wide-spread percussion drillholes). Note: Not all drillhole locations have been established, with 69 holes digitised and 1 hole estimated (total 70) and three percussion holes with unknown location. Exploration activity completed by Minex included drilling, surface and underground geological mapping and sampling, minor geophysical magnetic survey with 10,400 linear feet collected (inconclusive results), 6,500ft of bulldozer trenching and mapping.</p> <p>Stager and Tingley, 1988 estimate total production at the Linka mine at 25,670 units WO₃ (1943-56).</p> <p>Linka-Conquest Mine: The mine was discovered in 1941 but did not start production until 1943 when Gale Peer sunk a two-compartment inclined shaft to 130 feet. Workings off the shaft were at the 50 and 100 foot levels. During WW II mined and shipped 390 tons of ore averaging 2.7% WO₃. Additional shipments after the War averaged over 1.0% WO₃, but the tonnage is unknown. Last work on the 100' level exposed a zone 40' long, 12' to 20' wide, open to the northeast with a grade of <0.4% WO₃. Stager and Tingley, 1988, estimate total production at 5,208 units WO₃ (1944-56).</p> <p>Stager and Tingley, 1988 estimate total production at the Conquest mine to be 5,208 units WO₃ (1944-56)</p>
<p>Geology</p>	<p><i>Deposit type, geological setting and style of mineralisation</i></p>	<p>Linka Project: The area is underlain primarily by sedimentary rocks; it includes an outcrop of massive limestone of Ordovician age (Upper Plate) overlain in thrust contact by chert and shale of Ordovician Vinini Formation (Lower Plate). The limestone is intruded locally by granitic rocks of Jurassic age, and the tungsten deposits occur in the limestone along the granite contact (Stager and Tingley, 1988)</p> <p>Linka-Conquest Mine - Granite intrusive rocks (Jg) and aplite dikes intrude cherts, shales and limy members of the Vinini Formation (Ov) in the Upper Plate of the Roberts Mountain Thrust. Scheelite-bearing skarn formed at the contact.</p> <p>Miocene age Bates Mountains tuff (Tbm) covers any extension of the mineralization to the northeast.</p> <p>Linka Mine - Scheelite occurs in lenses and tabular masses of skarn at the contact between Ordovician Antelope Valley Limestone (Lower Plate of the Roberts Mountain Thrust) and granitic intrusive rocks. The contact zone is cut by igneous dykes and high-angle faults. Exposures are poor. Granite rocks west of the contact zone are covered by post-mineral volcanic rock and sediments of Big Smokey Valley.</p> <p>Antelope Valley limestone east of the contact zone is nearly vertical. The contact zone is about 40 feet wide. Drilling in the 1970's shows that, at depth, the contact zone may flatten to the east, then steepen. Scheelite, with traces of chalcopyrite and molybdenite are the only ore minerals recognized.</p> <p>Linka-Hillside - The Hillside incline shaft is about half way between the Conquest and Linka Mines. The shaft is inclined at ~47° and is approximately 100 feet deep. In 1978, when the area was visited by Richard Jones and Harold Bonham, geologists at the Nevada Bureau of Mines and Geology, there were no drifts or cross-cuts off the shaft. Here the rocks are more thinly bedded and contain more hornfels than sediments at the Linka shaft. Lenses of scheelite-bearing skarn in the Hanson Creek Fm are at the surface and a lens of mineralized skarn within the Antelope Valley Limestone occurs in the shaft (Stager and Tingley, 1988).</p>
<p>Drill hole Information</p>	<p><i>A summary of all information material to the understanding of the exploration results including a tabulation of the following information for all Material drill holes:</i></p> <ul style="list-style-type: none"> • <i>easting and northing of the drill hole collar</i> • <i>elevation or RL (Reduced Level - elevation above sea level in metres) of the drill hole collar</i> • <i>dip and azimuth of the hole</i> • <i>down hole length and interception depth</i> 	<p>Not applicable, no drilling is being reported.</p>





For personal use only

Criteria	JORC Code explanation	Commentary
	<ul style="list-style-type: none"> hole length. <p>If the exclusion of this information is justified on the basis that the information is not Material and this exclusion does not detract from the understanding of the report, the Competent Person should clearly explain why this is the case.</p>	
Data aggregation methods	<p>In reporting Exploration Results, weighting averaging techniques, maximum and/or minimum grade truncations (e.g., cutting of high grades) and cut-off grades are usually Material and should be stated.</p> <p>Where aggregate intercepts incorporate short lengths of high-grade results and longer lengths of low-grade results, the procedure used for such aggregation should be stated and some typical examples of such aggregations should be shown in detail.</p> <p>The assumptions used for any reporting of metal equivalent values should be clearly stated.</p>	Not applicable, no drilling is being reported. No top cuts have been applied by Viking.
Relationship between mineralisation widths and intercept lengths	<ul style="list-style-type: none"> These relationships are particularly important in the reporting of Exploration Results. If the geometry of the mineralisation with respect to the drill hole angle is known, its nature should be reported. If it is not known and only the down hole lengths are reported, there should be a clear statement to this effect (e.g. 'down hole length, true width not known'). 	<p><u>Metallurgical Sample</u></p> <p>Unknown, the mineralisation sampled was not insitu. No drilling is being reported.</p>
Diagrams	<p>Appropriate maps and sections (with scales) and tabulations of intercepts should be included for any significant discovery being reported These should include, but not be limited to a plan view of drill hole collar locations and appropriate sectional views</p>	No drillhole data is being reported. A significant discovery is not being reported.
Balanced reporting	<p>Where comprehensive reporting of all Exploration Results is not practicable, representative reporting of both low and high grades and/or widths should be practiced to avoid misleading reporting of Exploration Results.</p>	All appropriate information is included in the report.
Other substantive exploration data	<p>Other exploration data, if meaningful and material, should be reported including (but not limited to): geological observations; geophysical survey results; geochemical survey results; bulk samples - size and method of treatment; metallurgical test results; bulk density, groundwater, geotechnical and rock characteristics; potential deleterious or contaminating substances</p>	<p>Sample LKMET0004 was selected for sequential gravity and flotation testwork. Gravity and flotation separation test feed samples were generated by sub-sampling ~10 kg of crushed material and stage grinding that material to a P₁₀₀ of 250 µm prior to processing it over a Wilfley Table. The Wilfley Table concentrate was sized at 180 and 106 µm prior to processing the individual size fractions further over a Mozley Table with the Wilfley and Mozley Table tails undergoing a rougher / cleaner flotation test.</p> <p>Mozley and flotation table products were then dried, weighed and pulverised to a P₈₀ <75 µm prior to being submitted for assay. This sub-sample is considered accurate with sample mineralogy not expected to have caused sampling issues. Analytical method is described in table 1 section 1 above.</p> <p>No other substantial exploration data is considered meaningful or material in making this announcement. All previously reported data has been referenced in the report.</p>



Criteria	JORC Code explanation	Commentary
Further work	<p><i>The nature and scale of planned further work (e.g. tests for lateral extensions or depth extensions or large-scale step-out drilling). Diagrams clearly highlighting the areas of possible extensions, including the main geological interpretations and future drilling areas, provided this information is not commercially sensitive.</i></p>	<p>Metallurgical testwork is ongoing on samples collected as previously reported to the ASX (see reference in main report). Ongoing metallurgical testwork is progressing as defined in the report. Maiden drilling programme is scheduled to commence at the project in June 2026 with earthworks and drill site preparation, followed by drilling. Additional activities underway are detailed in the report.</p> <p>Other projects: A primary focus is to identify and source any and all available historical data on the projects to allow planning of future sampling and drilling programmes. On planning of any drilling programmes a Notice of Intent or Plan of Operations will be prepared and submitted to the relevant Federal authority.</p>

For personal use only

