

Tuesday, 9 June 2026

108m @ 25.1g/t indium intersected at the West Desert Project

Significant indium-zinc-gold discovery 400m east of existing JORC resource confirms world-class scale of the USA's largest undeveloped indium deposit

- **Assays confirm that WD26-01 has intersected a continuous 108.4m interval of high-grade indium mineralisation that also contains high-grade zones of zinc and gold with grades up to 140.5g/t In, 14.3% Zn, 4.79g/t Au, and 81.1g/t Ag¹.**
- **Exceptional resource upside:** WD26-01 was drilled into an untested 4km long magnetic anomaly 430m east from the West Desert Deposit and has confirmed that the magnetic anomaly is directly associated with high-grade indium, zinc, gold, and copper skarn mineralisation – providing a large target area for further drilling to expand the mineralisation further.
- **Textbook model for a very large-scale mineral system emerging:** The type of skarn mineralisation intersected at West Desert is typical around mineralised porphyries, and is similar to the geological model for the giant Bingham Canyon mine which – like West Desert – is hosted in the Seiver Orogenic Belt in Utah.
- **Follow-up drilling:** The third drill hole in the 2026 campaign is underway and is targeting the porphyry/skarn contact and magnetic anomaly 350m further east of WD26-01. Additional drill holes will be planned to test the continuity as well as up-dip potential of the mineralisation with downhole electromagnetic (DHEM) surveys to provide geophysical support for targeting along this prospective contact.
- **Indium is critical to the AI revolution:** Surging demand for indium used in semi-conductors, electro-optical applications, data centres, and military applications has seen its value increase by more than 90% year-on-year² with world-leading end-users like NVIDIA Corp (NASDAQ: NVDA) requesting 20 times increase in supply of indium phosphide by 2030³.
- **West Desert can deliver US supply security:** The US is the world's second largest importer of indium and has a 100% reliance on imports; China controls the majority of world indium supply and imposed export restrictions for indium in February 2025 as geopolitical strategies for critical metals intensified.⁴

¹ See Table 1 for details of drill hole and assay results.

² Source: Trading Economics reports a 90.38% increase y-o-y in April 2026 for 99.99% indium ingots with current price at US\$702/kg and a peak through the year at US\$962/kg.

³ Source: 24/7 Wall Street, 28 May 2026.

⁴ Source: Indium Market Outlook September 2025 by Project Blue.



American West Metals Limited (**American West** or **the Company**) (ASX: AW1 | OTCQB: AWMLF) is pleased to provide an update on drilling and laboratory assay results at its 100% owned West Desert Project in Utah (**West Desert** or the **Project**), USA.

Dave O’Neill, Managing Director of American West Metals commented:

"These outstanding assay results from drill hole WD26-01 mark a major discovery for the West Desert Project and reinforce its position as one of the most compelling critical minerals opportunities in the United States. The intersection of a continuous 108-metre interval of indium skarn mineralisation, also containing high-grade zinc and gold zones, demonstrates both the scale and quality of the mineral system we are uncovering.

"Importantly, drilling has confirmed that the 4-kilometre-long magnetic anomaly is directly associated with high-grade indium, zinc, gold and copper mineralisation, highlighting significant potential to expand what is already the largest undeveloped JORC-compliant indium resource in the US. The results also validate our exploration model and targeting approach, opening up a substantial new growth corridor beyond the existing resource. We are particularly encouraged by the high-grade gold mineralisation encountered, which points to an exciting new dimension of exploration upside across the project.

"With growing demand for indium in semiconductor and advanced technology applications, and the United States remaining reliant on imports of this critical mineral, West Desert is reinforced as a strategically important asset with the potential to play a leading role in strengthening US domestic supply security.

"We look forward to sharing further exciting news flow on West Desert as the drilling program continues."

OUTSTANDING EXPLORATION AND EXPANSION POTENTIAL CONFIRMED

Drill hole WD26-01 was drilled to 643.75m and has intersected an extremely thick interval of indium-zinc-gold-copper sulphides from 471m downhole (approximately 400m vertical depth – Figure 2). The interval is comprised of strong magnetite and sphalerite skarn, with moderate and lesser zones of chalcopyrite throughout.

The skarn mineralisation is variable in intensity and is hosted within bedded limestone on the contact of the porphyry intrusive. The style and host of the skarn mineralisation appear very similar to the Main Zone of the West Desert Deposit, and to that of other skarns around known zinc-lead-silver-gold mines in Utah including the giant Bingham Canyon mine and the Tintic mineral district.

The strong presence of magnetite within the skarns indicates that the drill hole has intersected the source of the magnetic anomaly, confirming the geological model and validating the use of magnetics as an effective targeting tool for mineralisation similar to the West Desert Deposit. The large step-out from the West Desert MRE and 4km strike of the anomaly highlights the very significant increase in scale of the West Desert mineral system that is emerging from this highly prospective unexplored area within our 100% owned tenure.



Follow-up drilling is planned to test the continuity of the high-grade mineralisation along strike to the east as well as up-dip. The interpretation of WD26-01 suggests that the porphyry/skarn contact is steeply dipping/sub-vertical, similar to that of the West Desert deposit (Figure 2). The mineralisation at West Desert commences at less than 50m from surface, providing strong support for further mineralisation to be present up-dip from the high-grade interval in WD26-01 and to be part of a significant zone of mineralisation that commences closer to surface.

Further drilling and DHEM surveys will assist to define the extent of the mineralisation.

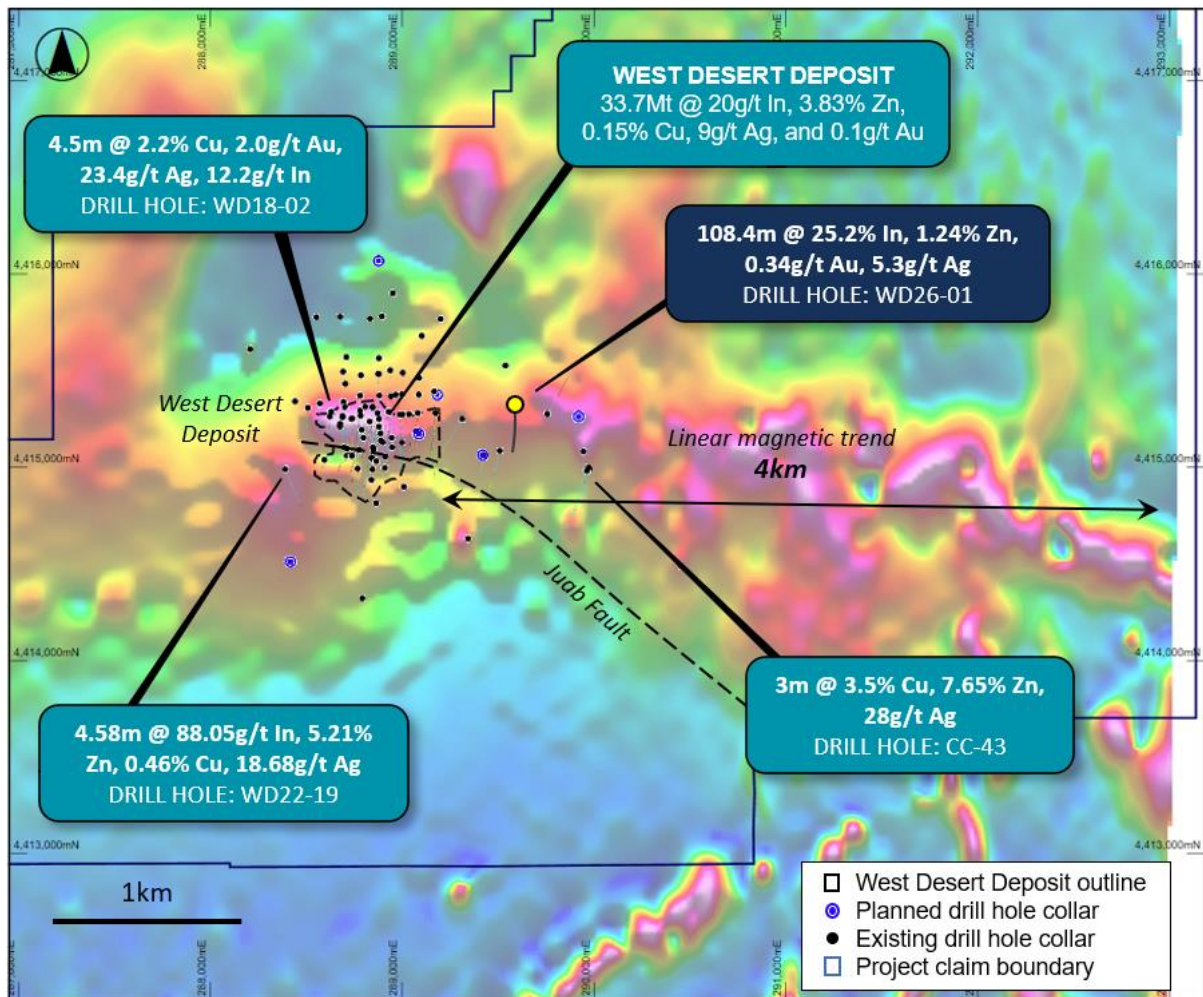


Figure 1: Plan view of the West Desert Project area, existing drilling and deposit outline overlaying magnetic imagery (1VD RTP Tilt- hotter colours represent higher magnetic intensity).

For personal use only



The discovery hole WD26-01 returned assays of (also see Table 1):

- 108.4m @ 25.2g/t In, 1.24% Zn, 0.34g/t Au, 5.3g/t Ag, from 471.0m downhole, including;
 - 57.8m @ 33.3g/t In, 2.1% Zn, 0.51g/t Au, 7.5g/t Ag, from 471m downhole, including,
 - 16.2m @ 44.0g/t In, 2.6% Zn, 0.94g/t Au, 13.9g/t Ag, from 471m downhole including,
 - 1.0m @ 110.5g/t In, 5.4% Zn, 2.82g/t Au, 48.7g/t Ag, from 476.3m downhole, and,
 - 6.6m @ 70.6g/t In, 3.2% Zn, 1.4g/t Au, 13.4g/t Ag, from 480.7m downhole, including,
 - 0.4m @ 140.5g/t In, 8.8% Zn, 4.79g/t Au, 81.1g/t Ag, from 480.7m downhole, and,
 - 6.0m @ 39.3g/t In, 3.6% Zn, 0.69g/t Au, 9.3g/t Ag, from 491.0m downhole, including,
 - 2.0m @ 47.9g/t In, 6.3% Zn, 0.15g/t Au, 5.4g/t Ag, from 495.0m downhole.
 - And, 17.2m @ 36.2g/t In, 2.2% Zn, 0.29g/t Au, 5.9g/t Ag, from 499.2m downhole, including,
 - 0.9m @ 112.5g/t In, 14.3% Zn, 0.14g/t Au, 4.3g/t Ag, from 515.5m downhole,
 - And, 2.2m @ 73.3g/t In, 6.4% Zn, 0.12g/t Au, 4.0g/t Ag, from 522.3m.

BROAD SCALE GOLD EXPLORATION UPSIDE CONFIRMED

A number of highly altered porphyry intrusive and skarn types are present within WD26-01, which have now been confirmed to host high-grade gold mineralisation.

The drill hole has intersected a high-sulphidation gold-bearing overprint across multiple zones within magnetite hosted indium-zinc skarn mineralisation. The magnetite skarns occur within a background of strong silicification, healed brecciation, and coliform banding of silica and carbonate. Gold grades up to 4.79g/t Au within the broad interval highlight the exploration potential along the margin of the porphyry. The average gold grades within the broad intersection of drill hole WD26-01 are higher than that of the West Desert Deposit (0.10g/t Au, Table 8), suggesting a different control on mineralisation and the potential for gold-dominant skarns within the project area.

The assays from WD26-01 also confirm the association between the gold mineralisation and gold pathfinder elements including tungsten, arsenic, and bismuth which will provide a useful tool for sample selection for the remainder of the drill program.

For personal use only

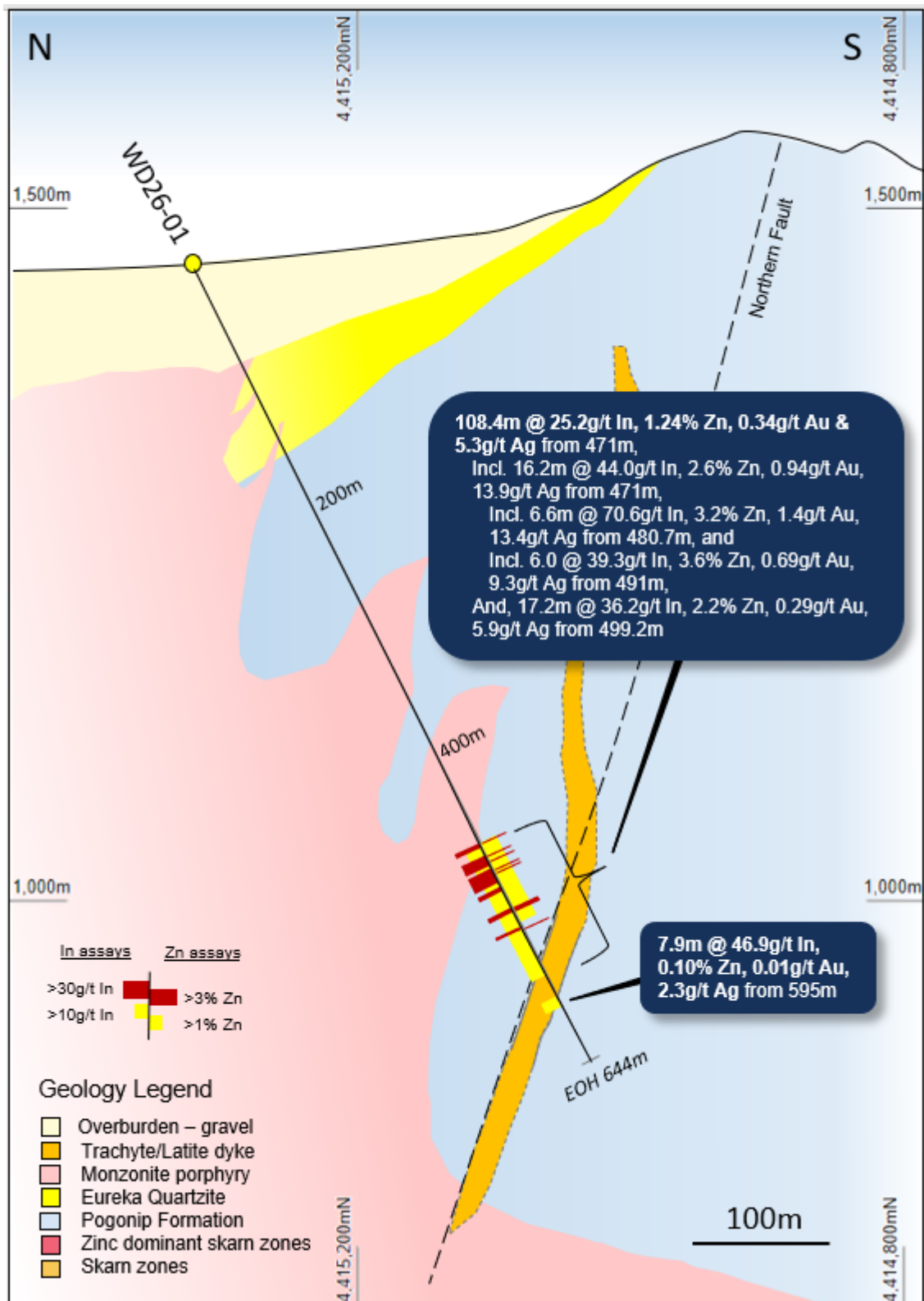


Figure 2: Schematic geological section at 289,600E (+/-20m) showing main geological units and WD26-01 drill trace.



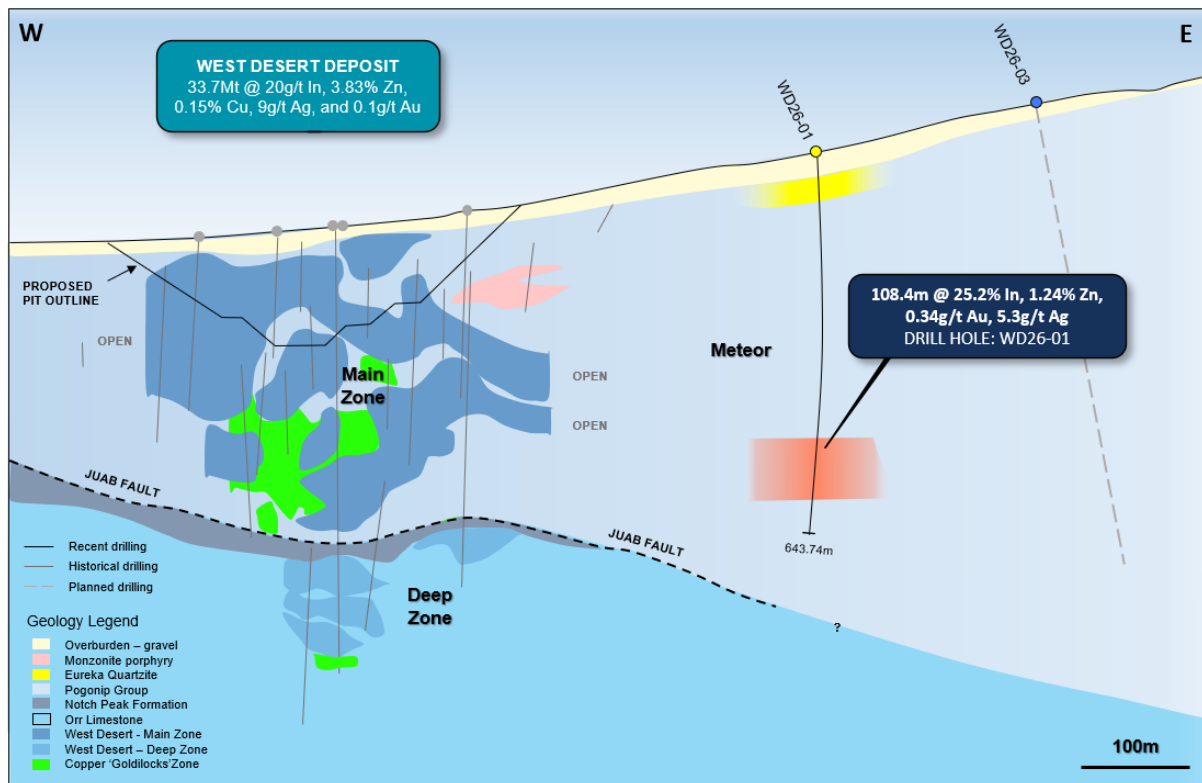


Figure 3: Interpreted schematic long-section at 4,415,180N (+/-25m) showing main geological units, West Desert MRE, and drilling. Drill hole WD26-01 is located approximately 430m east from previous drilling, with planned drilling targeting further extensions to the east.

INDIUM – EXPANDING A WORLD-CLASS DEPOSIT AT WEST DESERT

The West Desert Deposit is the only deposit in the US with a modern National Instrument 43-101 (NI 43-101) and JORC 2012 compliant resource estimate of indium (Dyer and others, 2014). Only 35% of drill samples used in the resource estimates were assayed for indium, suggesting that the scale of the indium endowment at West Desert is potentially very much larger than currently defined. As it stands, West Desert is already one of the largest undeveloped deposits of indium in the world, with a JORC compliant inferred resource of 33.7Mt @ 20g/t In for 23,763,978 ounces of indium – see Table 8. Importantly, the indium intersection within WD26-01 is higher grade than the current West Desert resource.

Indium is considered a critical and strategic mineral and is used in the aerospace, defense, energy, and telecommunications sectors. In 2025, the U.S. was a 100 percent net importer (Figure X) reliant on indium sourced mostly from Asia including China which controls the majority of indium world supply (U.S. Geological Survey, 2026).

On 4 February 2025, the Chinese Ministry of Commerce and the General Administration of Customs issued a joint statement announcing restrictions on indium exports to “safeguard national stability.” The imposed restrictions affect the export of indium phosphide and other refined indium products as well as the technology and data required to produce these products.

For personal use only



This export restriction was taken in response to the USA imposing export restrictions on 140 Chinese semiconductor firms and increasing tariffs from 0% to 25% on Chinese indium imports⁵.

Indium is most commonly recovered from the smelting of sphalerite, a zinc-sulphide mineral, and this is reflected at West Desert where the MRE includes a large zinc resource of 2.8 billion pounds of zinc (1.29 million tonnes). Indium is also found within roquesite (copper-indium-sulphide) and magnetite (iron ore) at West Desert, further highlighting the widespread occurrence of indium in the West Desert mineral system.

Due to the unique features and exceptional endowment of indium within the West Desert Deposit, the Utah Geological Survey (UGS) received a \$300,000 federal grant to complete a detailed study on the indium at West Desert (see ASX announcement dated 9 November, 2022 – US Federal Grant for West Desert Critical Metals Study). The UGS is studying how the West Desert deposit formed and the department of the indium throughout the deposit and mineral district. The findings from this research are assisting in ongoing exploration targeting at West Desert.

The West Desert Deposit is located on private land owned 100% by American West which provides a competitive commercial advantage – a clear and potentially fast-tracked pathway for development approvals compared to projects on federal land. The world-class indium resource at West Desert presents as a standout opportunity for the US to establish a reliable supply chain for this critical mineral that is essential for the aerospace, defence, energy, and telecommunications sectors.

AI revolution creates unprecedented demand for indium

Indium has a critical role in the AI industry as it is a preferred coating for semi-conductors and an integral component of optical networks. Nvidia (NASDAQ:NVDA), world-leader in data centre and semi-conductor technology, recently asked suppliers to increase indium phosphide (InP) laser capacity by 20x through 2030⁶ highlighting the surging growth in indium demand. Optical networking is core to AI infrastructure, and at the center of optical networking sits indium phosphide (InP).

Nvidia recently made a strategic investment of US\$4 billion in optical component suppliers in the US, with the aim of securing optical network supplies ahead of fast-growing demand⁷. US\$2 billion is being invested by Nvidia in each of Coherent Corp (NYSE: COHR) and Lumentum (NASDAQ: LITE), both US-based manufacturers of InP lasers and other optical network products, to ensure Nvidia can continue the smooth deployment of AI technologies.

Surging demand for indium is also likely to come from other AI developers, including Space X which has announced plans for "space AI distributed computing infrastructure" and space computing power centers in its Starlink V3 satellite.⁸

⁵ Source: Indium Market Outlook by Project Blue, September 2025.

⁶ Source: 24/7 Wall Street and Rosenblatt Securities, 28 May 2026.

⁷ Source: Designlines, 9 March 2026; Nvidia press releases dated 2 March 2026.

⁸ See Space X S-1 IPO Prospectus dated 20 May 2026.



Military applications are also a key use of indium with indium tin oxide (ITO) used as a stealth material due to its low infrared emissivity and strong microwave absorption. It is a core component of military aircraft including stealth bombers manufactured by Northrop Grumman in the US.

American West attended the Aerospace & Defence 2026 Conference in Washington DC in May 2026, and was invited by key US Government agencies to discuss the critical metal development potential of the West Desert Project. Discussions with US Government are continuing.

For personal use only

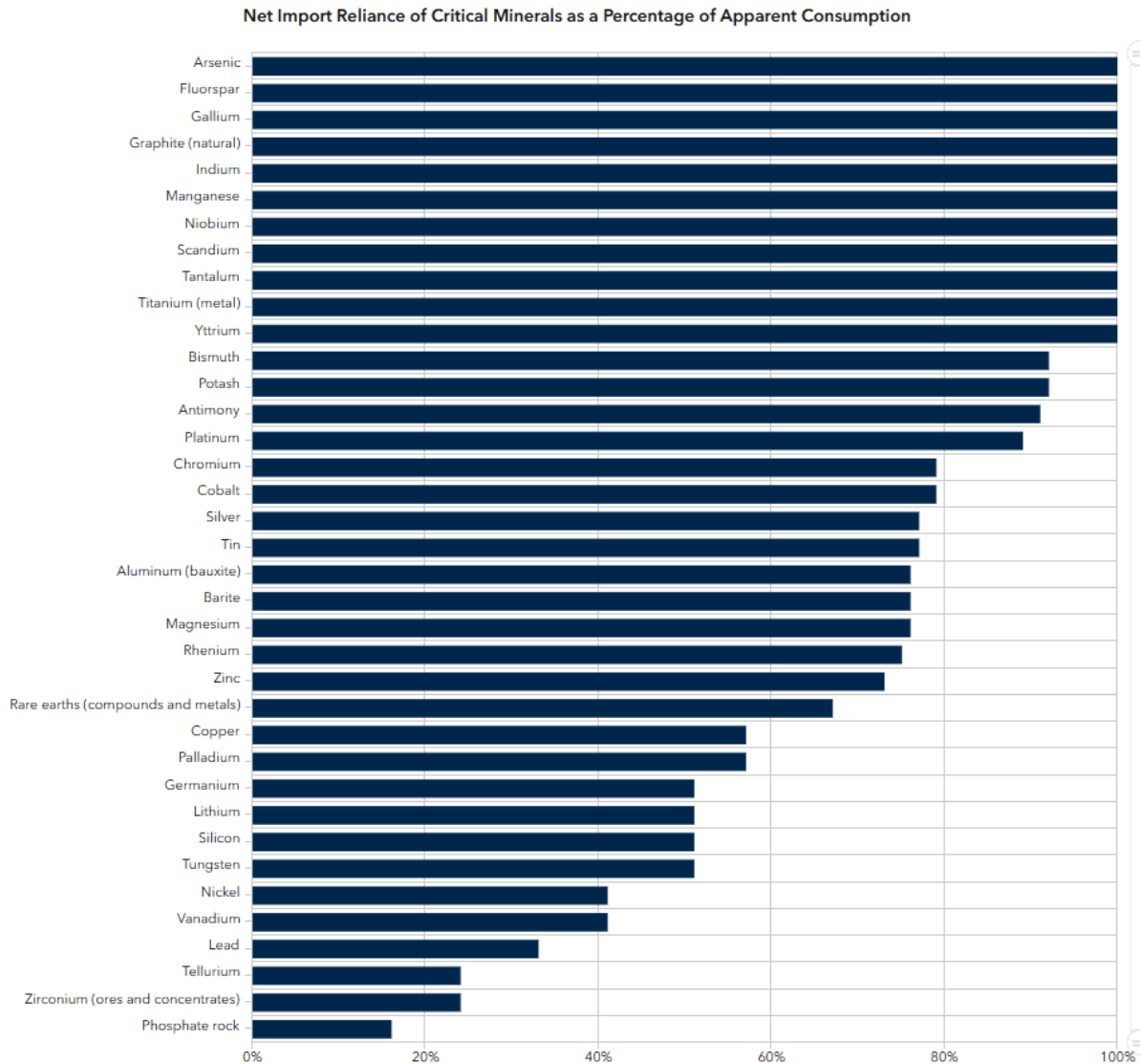


Figure 4: US Geological Survey Critical Minerals list for 2025 (Mineral Commodity Summaries 2026, USGS).



Hole ID	From (m)	To (m)	Width	In g/t	Zn %	Au g/t	Ag g/t	Cu ppm	Ga g/t
WD26-01	471	579.4	108.4	25.2	1.2	0.34	5.3	122	6.20
	471	528.8	57.8	33.3	2.1	0.51	7.5	139	5.25
Including	471	487.2	16.2	44.0	2.6	0.94	13.9	296	4.81
Including	471.0	472.4	1.4	42.0	6.7	0.38	22.6	1990	6.31
and	476.3	477.3	1.0	110.5	5.4	2.82	48.7	93	3.11
and	480.7	487.2	6.6	70.6	3.2	1.40	13.4	73	3.80
Including	480.7	481.3	0.4	140.5	8.8	4.79	81.1	310	3.45
	491.0	539.8	48.8	30.7	1.8	0.33	4.7	75	6.01
Including	491.0	498.2	7.2	38.1	3.2	0.59	8.1	62	5.06
Including	495.0	497.0	2.0	47.8	6.3	0.15	5.4	122	5.70
and	499.2	516.4	17.2	36.2	2.2	0.29	5.9	53	5.43
Including	515.5	516.4	0.9	112.5	14.3	0.14	4.3	370	5.3
and	521.0	525.0	4.0	47.4	3.8	0.50	4.4	297	6.88
and	528.0	530.6	2.5	26.2	0.9	0.50	4.6	49	6.59
and	531.0	539.8	8.8	29.6	0.9	0.10	1.8	43	7.20
	541.1	547.0	6.0	16.1	0.2	0.14	3.4	70	6.53
	548.0	553.0	5.0	13.8	0.0	0.21	4.1	71	5.68
	558.9	559.4	0.6	32.1	0.0	0.21	3.2	123	4.45
	560.1	563.2	3.1	13.7	0.1	0.08	2.1	79	7.95
	564.0	567.0	3.0	15.3	0.1	0.11	1.9	78	10.04
	568.0	574.0	6.0	16.6	0.0	0.07	1.3	60	10.04
	575.0	579.4	4.4	16.3	0.1	0.11	4.0	178	5.67
	595.0	602.9	7.9	46.9	0.1	0.01	2.3	114	12.90
Including	595.0	598.6	3.6	81.6	0.0	0.00	1.8	170	18.90
and	601.6	602.9	1.3	22.4	0.5	0.01	7.0	106	2.34

Table 1: Summary of significant drilling intersections for drill hole WD26-01 (>10g/t indium)

For personal use only



WEST DESERT NEXT STEPS

The 2026 drilling program continues to be advanced and will be expanded to unlock further value at the West Desert Project with key activities now underway:

- Drilling is operating 24/7 with a second diamond drill rig arranged to accelerate testing of the resource expansion, exploration and critical metals targets. The Company is fully funded to complete the upsized drill program.
 - The third drill hole from the 2026 program is underway targeting approximately 350m to the east of 2026 drill hole WD26-01. The drill hole is targeting the porphyry margin and 4km long magnetic trend that has already been confirmed to be associated with zinc-copper-indium-silver-gold skarns.
 - Assays for drill hole WD26-02 are expected over the next week
 - Strategic engagement with US Government agencies and stakeholders on critical metals funding, supply, and potential production is continuing.
-

For personal use only



ABOUT THE WEST DESERT PROJECT, UTAH

The West Desert Project is located 160km southwest of Salt Lake City, Utah, within the heart of the Sevier Orogenic Belt which hosts the world class Bingham Canyon copper deposit and Tintic Mining District. The Project comprises 330 acres of private land, 336 unpatented lode mining claims and a single State Metalliferous Mineral Lease, for a total land holding of approximately 32km².

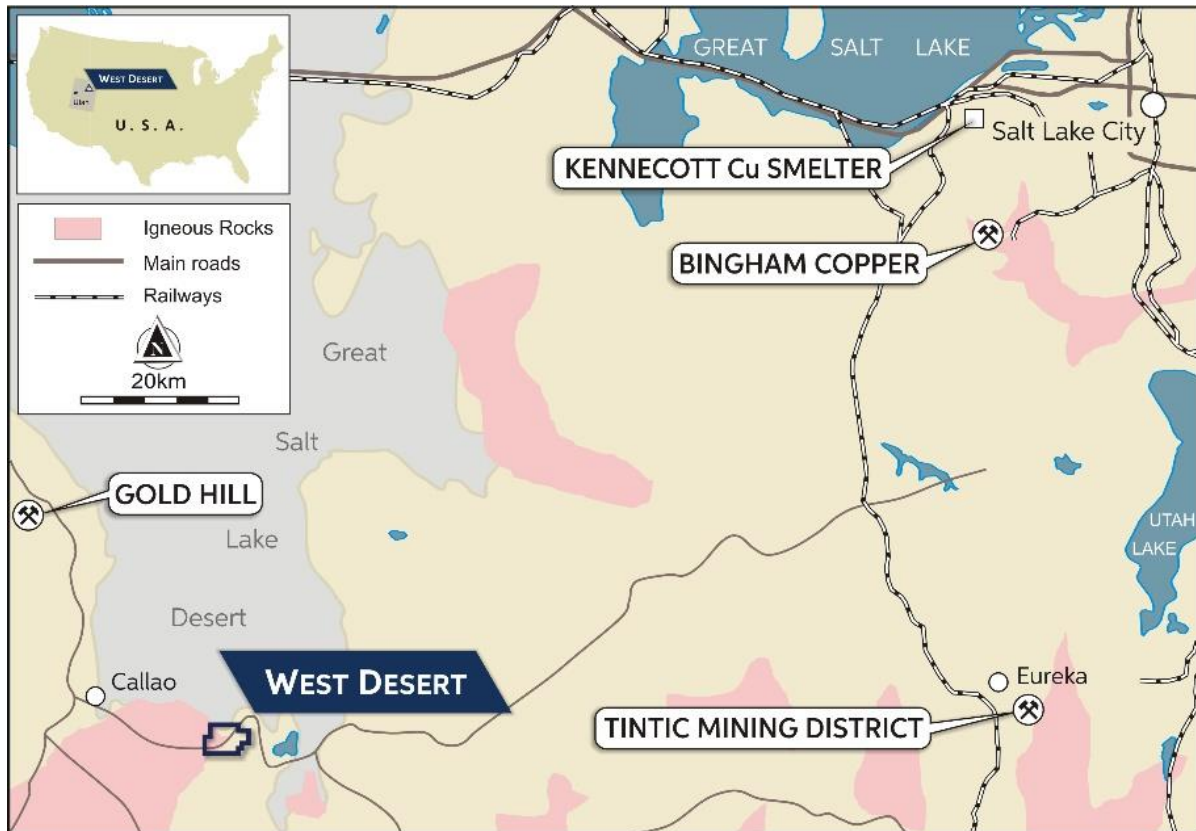


Figure 5: Location of the West Desert Project.

The West Desert Deposit forms part of a large, magmatic-hydrothermal, skarn/carbonate replacement system of late Eocene age (Figure 6).

West Desert is classified as a zinc-copper skarn and carbonate replacement deposit. The deposit is separated into two distinctive geological units by the Juab Fault. The Main Zone lies north of the Juab Fault and is hosted by massive limestone and dolomites of the Notch Peak Formation. The Deep Zone lies to the south of the Juab Fault where mineralisation is more stratiform and hosted by a series intermittent shale and limestone units within the Orr Formation.

The mineralisation is dominated by sphalerite with lesser chalcopyrite occurring in a series of lenses hosted by carbonates in proximity to the quartz monzonite intrusive complex. The most dominant skarns discovered to date are magnetite rich. The zinc and copper are associated with significant quantities of silver, indium, gold, and other critical metals. Lead and molybdenum generally occur on the margins of the deposit and elsewhere in the district.

The magmatic system remains underexplored with a range of deposit types discovered in the area.

For personal use only

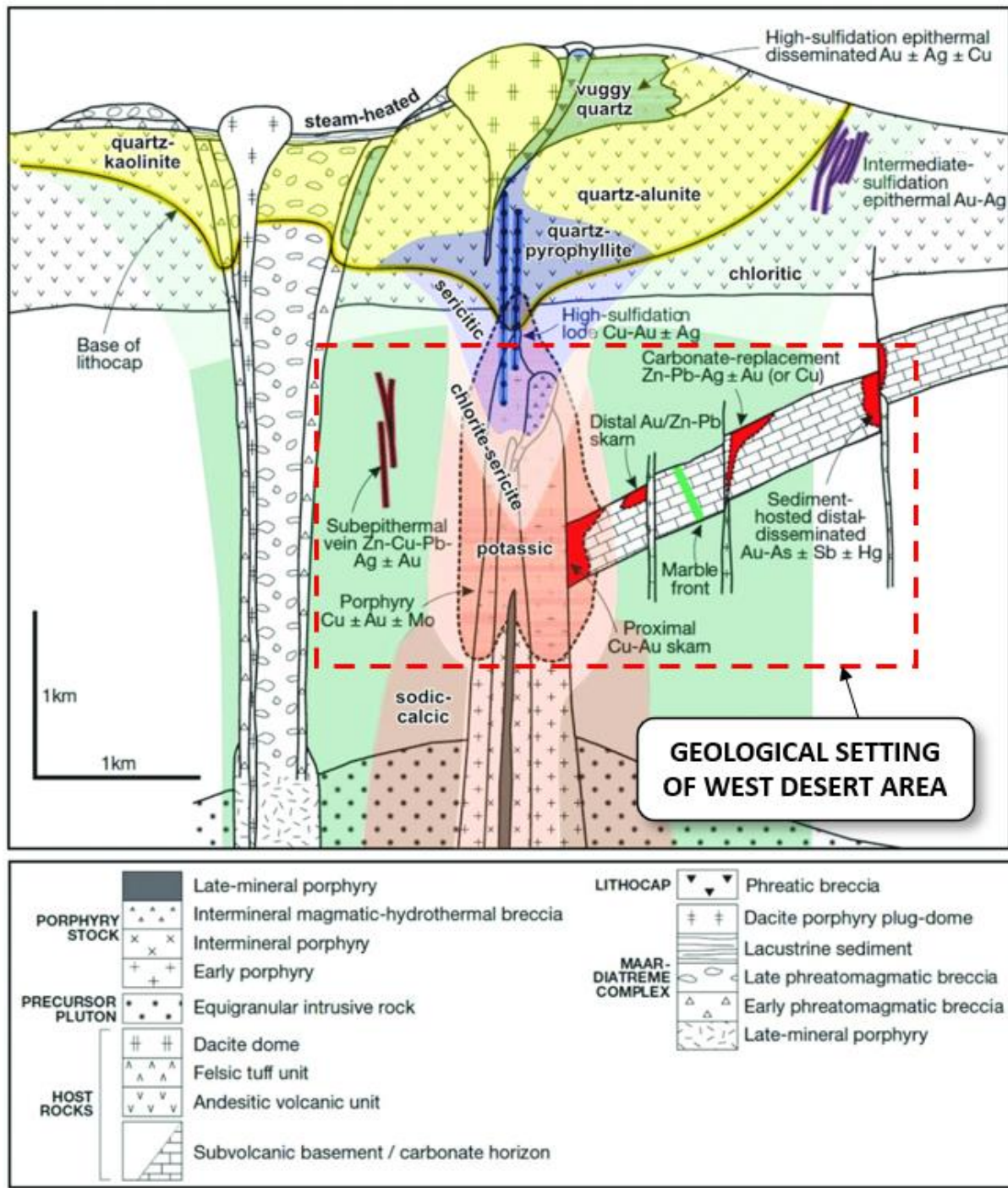


Figure 6: Schematic geological model of a typical porphyry mineralisation system (Sillitoe 2010) showing the approximate location and elements of the system West Desert area (red dotted outline).



MINERAL RESOURCE ESTIMATION AND DRILL HOLE DATA

The MRE tables for the West Desert deposit are reported in accordance with the Australian Code for Reporting of Exploration Results, Mineral Resources and Ore Reserves under JORC Code – 2012.

Some totals may not add up due to rounding.

Category	Tonnes	Zn (%)	Cu (%)	Ag (g/t)	Zn (t)	Cu (t)	Ag (Oz)
Indicated	27,349,163	3.79	0.14	9.53	1,037,278	40,588	8,376,494
Inferred	6,318,875	4.01	0.13	7.13	253,626	8,465	1,440,285
Total	33,668,038	3.83	0.15	9.08	1,290,904	49,053	9,816,779

Table 3: Total of all material categories for zinc, copper, and silver.

Category	Tonnes	Zn (%)	Cu (%)	Ag (g/t)	Zn (t)	Cu (t)	Ag (Oz)
Indicated	4,493,988	1.32	0.07	9.17	59,446	3,304	1,324,438
Inferred	528,095	1.30	0.04	10.92	6,845	211	185,387
Total	5,022,083	1.32	0.07	9.35	66,291	3,515	1,509,825

Table 4: Open-pit Heap Leach oxide material category at 0.7%-1.5% Zn.

Category	Tonnes	Zn (%)	Cu (%)	Ag (g/t)	Zn (t)	Cu (t)	Ag (Oz)
Indicated	9,719,064	3.43	0.12	10.96	333,737	11,630	3,425,247
Inferred	789,925	2.66	0.09	8.98	21,034	747	228,008
Total	10,508,988	3.37	0.12	10.81	354,771	12,377	3,653,255

Table 5: Open-pit Mill Leach oxide material category >1.5% Zn.

Category	Tonnes	Zn (%)	Cu (%)	Ag (g/t)	Zn (t)	Cu (t)	Ag (Oz)
Indicated	3,074,980	2.99	0.19	13.84	92,108	5,780	1,367,936
Inferred	65,122	2.64	0.12	11.70	1,719	78	24,487
Total	3,140,102	2.99	0.21	13.79	93,826	5,858	1,392,423

Table 6: Open-pit Mill flotation sulphide material category >1.5% Zn.

Category	Tonnes	Zn (%)	Cu (%)	Ag (g/t)	Zn (t)	Cu (t)	Ag (Oz)
Indicated	10,061,132	5.48	0.20	6.98	551,988	19,874	2,258,872
Inferred	4,935,733	4.54	0.15	6.36	224,026	7,429	1,009,632
Total	14,996,865	5.17	0.18	6.78	776,014	26,940	3,268,503

Table 7: Underground Mill flotation sulphide material category >3.5% Zn.



Category	Material	Mine type	Tonnes	In (g/t)	Au (g/t)	In (Oz)	Au (Oz)
Inferred	Oxide	Open Pit	15,531,071	10.8	0.09	5,916,698	49,306
Inferred	Sulphide	Open Pit	3,140,102	23.89	0.10	2,646,148	11,076
Inferred	Sulphide	Underground	14,996,864	28.73	0.12	15,198,136	63,480
Total			33,668,038	20.01	0.10	23,763,978	118,761

Table 8: JORC 2012 compliant West Desert Indium and Gold Inferred Resource.

Cut-off grades are: Open-pit Heap Leach oxide material category at 0.7% Zn, Open-pit Wet Mill sulphide material category 1.5% Zn, Underground Mill flotation sulphide material category >3.5% Zn. For further details see the ASX Releases dated 9 February 2023: 'Maiden JORC MRE for West Desert', and 13 December 2023: '23.8 Million Ounces of Indium Defined at West Desert'.

Hole ID	Prospect	Easting	Northing	RL	Depth (m)	Azi	Dip
WD26-01	Black Dragon	289594	4415324	1,460	643.74	174	-65

Table 9: 2026 drill program hole details

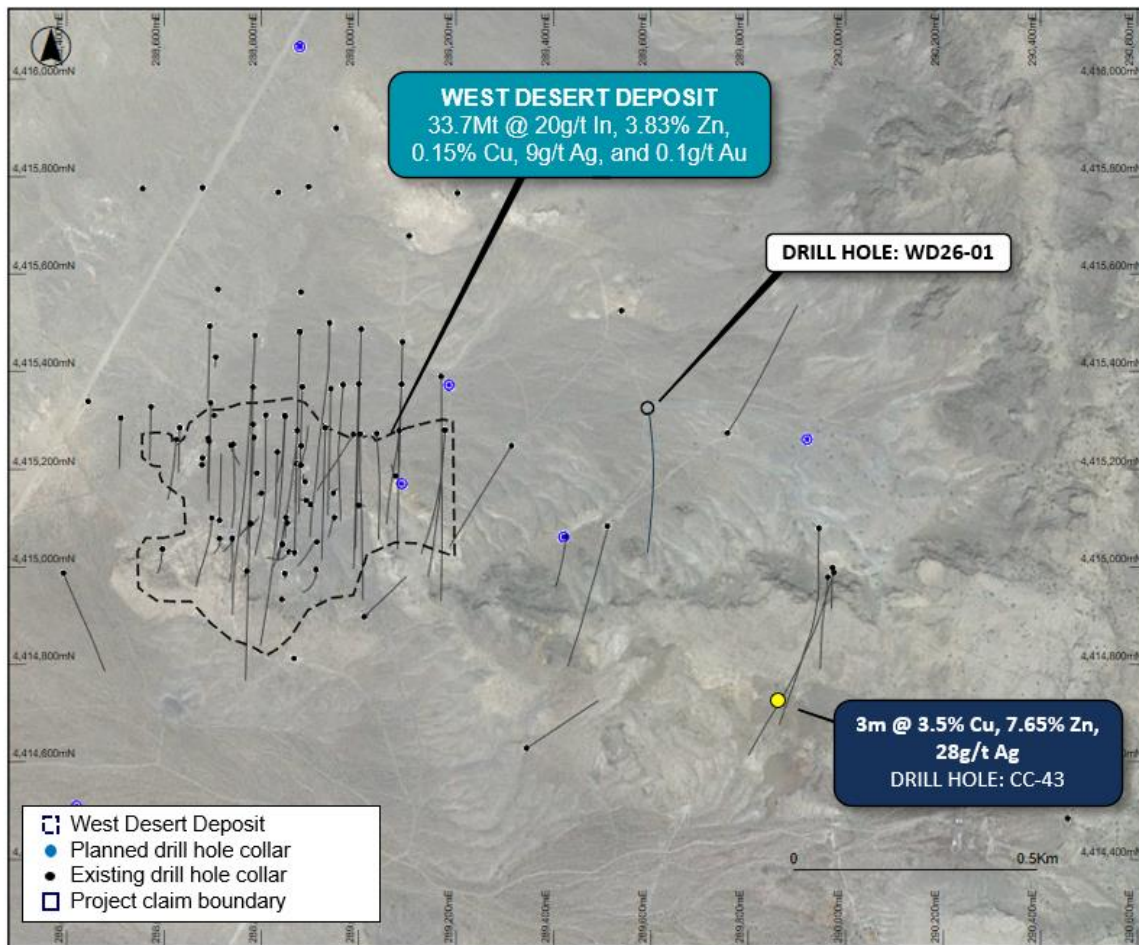


Figure 7: Plan view of existing and planned drilling, overlaying topography.

For personal use only



This announcement has been approved for release by the Board of American West Metals Limited.

For enquiries:

Dave O'Neill
Managing Director

American West Metals Limited

doneill@aw1group.com

+ 61 457 598 993

Dannika Warburton

Principal

Investability

info@investability.com.au

+61 401 094 261

Forward looking statements

Information included in this release constitutes forward-looking statements. Often, but not always, forward looking statements can generally be identified by the use of forward-looking words such as “may”, “will”, “expect”, “intend”, “plan”, “estimate”, “anticipate”, “continue”, and “guidance”, or other similar words and may include, without limitation, statements regarding plans, strategies and objectives of management.

Forward looking statements inherently involve known and unknown risks, uncertainties and other factors that may cause the Company’s actual results, performance, and achievements to differ materially from any future results, performance, or achievements. Relevant factors may include, but are not limited to, changes in commodity prices, foreign exchange fluctuations and general economic conditions, the speculative nature of exploration and project development, including the risks of obtaining necessary licenses and permits and diminishing quantities or grades of reserves, political and social risks, changes to the regulatory framework within which the Company operates or may in the future operate, environmental conditions including extreme weather conditions, recruitment and retention of personnel, industrial relations issues and litigation.

Forward looking statements are based on the Company and its management’s good faith assumptions relating to the financial, market, regulatory and other relevant environments that will exist and affect the Company’s business and operations in the future. The Company does not give any assurance that the assumptions on which forward looking statements are based will prove to be correct, or that the Company’s business or operations will not be affected in any material manner by these or other factors not foreseen or foreseeable by the Company or management or beyond the Company’s control.

Although the Company attempts and has attempted to identify factors that would cause actual actions, events, or results to differ materially from those disclosed in forward looking statements, there may be other factors that could cause actual results, performance, achievements, or events not to be as anticipated, estimated or intended, and many events are beyond the reasonable control of the Company. Accordingly, readers are cautioned not to place undue reliance on forward looking statements. Forward looking statements in this announcement speak only at the date of issue. Subject to any continuing obligations under applicable law or any relevant stock exchange listing rules, in providing this information the Company does not undertake any obligation to publicly update or revise any of the forward-looking statements or to advise of any change in events, conditions or circumstances on which any such statement is based.

Competent Person Statement – Mineral Resource

The information in this announcement that relates to the estimate of Mineral Resources for the West Desert Deposit is based upon, and fairly represents, information and supporting documentation compiled by Mr Allan Schappert, a Competent Person, who is a Member of the American Institute of Professional Geologists (AIPG).

Mr Schappert is a Principal Consultant at Stantec and an independent consultant engaged by American West Metals Limited for the Mineral Resource Estimate and has sufficient experience that is relevant to the style of mineralisation and type of deposit under consideration and to the activity being undertaken to qualify as a Competent Person as defined in the 2012 edition of the "Australasian Code for Reporting of Exploration Results, Mineral Resources and Ore Reserves" (the JORC Code).

The Company confirms that it is not aware of any new information or data that materially affects the results included in the original market announcement referred to in this announcement and that no material change in the results has occurred. All material assumptions and technical parameters under the Mineral Resource estimates in the original market announcement continue to apply and have not materially changed. The Company confirms that the form and context in which the Competent Person's findings are presented have not been materially modified from the original market announcement.

The ASX announcement contains information extracted from the following reports which are available on the Company's website at <https://www.americanwestmetals.com/site/content/>:

- 13 December 2023 23.8 Million Ounces of Indium Defined at West Desert
- 9 February 2023 Maiden JORC MRE for West Desert

Competent Person Statement – Exploration Results

The information in this report that relates to Exploration Targets and Exploration Results for the West Desert Project is based on information compiled by Mr Dave O'Neill, a Competent Person who is a Member of The Australasian Institute of Mining and Metallurgy. Mr O'Neill is employed by American West Metals Limited as Managing Director, and is a shareholder in the Company.

Mr O'Neill has sufficient experience that is relevant to the style of mineralisation and type of deposit under consideration and to the activity being undertaken to qualify as a Competent Person as defined in the 2012 Edition of the 'Australasian Code for Reporting of Exploration Results, Mineral Resources and Ore Reserves'. Mr O'Neill consents to the inclusion in this announcement of the matters based on his information in the form and context in which it appears.



Competent Person Statement – Previously Released Announcements

The Company confirms that it is not aware of any new information or data that materially affects the results included in the original market announcements referred to in this Announcement and that no material change in the results has occurred. The Company confirms that the form and context in which the Competent Persons’ findings are presented have not been materially modified from the original market announcement.

The ASX announcement contains information extracted from the following reports which are available on the Company’s website at <https://www.americanwestmetals.com/site/content/>:

- 18 December 2025 Multiple Indium and Gallium targets at West Desert
- 27 October 2025 AW1 Begins Critical Metals Field Program at West Desert
- 9 November 2022 US Federal Grant for West Desert Critical Metals Study
- 31 October 2022 Quarterly Activities and Cashflow Report
- 19 September 2022 Assays Confirm Growth Potential at West Desert
- 12 July 2022 Further Strong Assay Results for West Desert
- 18 May 2022 High Grades Confirmed Near Surface at West Desert
- 26 April 2022 Assays Confirm High Grades at West Desert
- 11 January 2022 Strong Gravity Results as Drilling Begins at West Desert

ASX Listing Rule 5.12

The Company has previously addressed the requirements of Listing Rule 5.12 in its Initial Public Offer prospectus dated 29 October 2021 (released to ASX on 9 December 2021) (Prospectus) in relation to the 2014 Foreign West Desert MRE at the West Desert Project. The Company is not in possession of any new information or data relating to the West Desert Project that materially impacts on the reliability of the estimates or the Company’s ability to verify the estimates as mineral resources or ore reserves in accordance with the JORC Code. The Company confirms that the supporting information provided in the Prospectus continues to apply and has not materially changed.

This ASX announcement contains information extracted from the following reports which are available on the Company’s website at <https://www.americanwestmetals.com/site/content/>:

- 29 October 2021 Prospectus

The Company confirms that it is not aware of any new information or data that materially affects the exploration results included in the Prospectus. The Company confirms that the form and context in which the Competent Person’s findings are presented have not been materially modified from the Prospectus.

For personal use only



ABOUT US



AMERICAN WEST METALS LIMITED

ABOUT AMERICAN WEST METALS

AMERICAN WEST METALS LIMITED (ASX: AW1 | OTCQB: AWMLF) is an Australian clean energy mining company focused on growth through the discovery and development of major base metal mineral deposits in Tier 1 jurisdictions of North America. Our strategy is focused on developing mines that have a low-footprint and support the global energy transformation.

Our portfolio of critical metals projects in Utah and Canada include significant existing resource inventories and high-grade mineralisation that can generate robust mining proposals. Core to our approach is our commitment to the ethical extraction and processing of minerals and making a meaningful contribution to the communities where our projects are located.

Led by a highly experienced leadership team, our strategic initiatives lay the foundation for a sustainable business which aims to deliver high-multiplier returns on shareholder investment and economic benefits to all stakeholders.

JORC Code, 2012 Edition – Table 1

Section 1 Sampling Techniques and Data

(Criteria in this section apply to all succeeding sections.)

Criteria	JORC Code explanation	Commentary
Sampling techniques	<ul style="list-style-type: none"> • <i>Nature and quality of sampling (e.g., cut channels, random chips, or specific specialised industry standard measurement tools appropriate to the minerals under investigation, such as down hole gamma sondes, or handheld XRF instruments, etc). These examples should not be taken as limiting the broad meaning of sampling.</i> • <i>Include reference to measures taken to ensure sample representivity and the appropriate calibration of any measurement tools or systems used.</i> • <i>Aspects of the determination of mineralisation that are Material to the Public Report.</i> • <i>In cases where ‘industry standard’ work has been done this would be relatively simple (e.g., ‘reverse circulation drilling was used to obtain 1 m samples from which 3 kg was pulverised to produce a 30 g charge for fire assay’). In other cases, more explanation may be required, such as where there is coarse gold that has inherent sampling problems. Unusual commodities or mineralisation types (e.g., submarine nodules) may warrant disclosure of detailed information.</i> 	<ul style="list-style-type: none"> • Historical samples and geological data are sourced using Diamond and Reverse Circulation Drilling. American West drilling was completed using Diamond Core. • Samples were collected from in-situ material at surface or from historic mine dumps adjudged by the geologist on site. The sample between 0.5-2kg is collected in a marked calico bag for submission for assay. • Sampling and geological intervals are determined visually by geologists with relevant experience with the intention of taking a representative rock chip sample for the parent rock or mine waste pile sampled. • The intervals of the core that are selected for assaying are marked up and then recorded for cutting and sampling. • The mineralisation at the West Desert Deposit displays classic features and is distinctive from the host and gangue lithologies • All intercepts are reported as downhole widths • Sampling was conducted on full and half-core with nominal 1.52m sample lengths down to a minimum of 0.15m • Sampling intervals were determined based off structure, lithology, and mineral assemblages in an effort to determine mineralized zones within in similar domains • Au was analysed with a 30 g charge for fire assay all other elements of interest (Ag, Cu, In, Fe) were subjected to a MS finish at the certified laboratory • Some details from historical drilling are unknown. • The gravity survey was completed by Magee Geophysical Services LLC, USA. • The surveys were completed using LaCoste & Romberg Model-G and Scintrex CG-5 Autograv gravity meters. • Model-G gravity meters measure relative gravity changes with a resolution of 0.01 mGal. Scintrex CG-5 gravity meters have a resolution of 0.001 mGal. The manufacturer's calibration tables were used to convert gravity meter counter units to milliGals with the delivered data. • Gravity surveys are used to detect density contrasts which may be related to the underlying lithology and rock types, alteration of minerals or mineralisation.

For personal use only

Criteria	JORC Code explanation	Commentary
Drilling techniques	<ul style="list-style-type: none"> • <i>Drill type (e.g., core, reverse circulation, open-hole hammer, rotary air blast, auger, Bangka, sonic, etc) and details (eg core diameter, triple or standard tube, depth of diamond tails, face-sampling bit or other type, whether core is oriented and if so, by what method, etc).</i> 	<ul style="list-style-type: none"> • American West’s Diamond Drilling was completed by Major Drilling America Inc. using a LF230 core drilling rig • A tri-cone bit was used through overburden to reach bedrock and then converted to HQ through regolith and NQ once drill string encountered the redox boundary • Drilling is completed using HQ and NQ diameter core • Downhole directional surveys are completed at the collar, 50ft (15.2m) and every 100ft (30.5m) downhole • Drill core is oriented using an ACT core orientation tool
Drill sample recovery	<ul style="list-style-type: none"> • <i>Method of recording and assessing core and chip sample recoveries and results assessed.</i> • <i>Measures taken to maximise sample recovery and ensure representative nature of the samples.</i> • <i>Whether a relationship exists between sample recovery and grade and whether sample bias may have occurred due to preferential loss/gain of fine/coarse material.</i> 	<ul style="list-style-type: none"> • Drill recoveries are recorded by the driller on run blocks and verified by the logging geologist in the digital geologic logs • To minimise core loss in unconsolidated or weathered ground, split tubes are used until the ground becomes firm and acceptable core runs can be achieved • No relationship has been determined between core recovery and grade and no sample bias is believed to exist. • Sample bias may occur in the form of representivity of the sample from mine waste dump it was collected from. This is due lack of information from the history of grade, tonnes and sequence of the mines it was collected from. The grades of the samples collected should be considered indicative only.
Logging	<ul style="list-style-type: none"> • <i>Whether core and chip samples have been geologically and geotechnically logged to a level of detail to support appropriate Mineral Resource estimation, mining studies and metallurgical studies.</i> • <i>Whether logging is qualitative or quantitative in nature. Core (or costean, channel, etc) photography.</i> • <i>The total length and percentage of the relevant intersections logged.</i> 	<ul style="list-style-type: none"> • Detailed geological logging was carried out on all drill holes with lithology, alteration, mineralization, structure, and veining recorded • A preliminary summary log is produced at the rig for daily reporting purposes • The logging is qualitative and quantitative in nature, with sample recovery and volume being recorded • The drill core is marked up and photographed wet and dry • 100% of all relevant intersections and lithologies are logged • Most, but not all records are available for historical drilling • Rock Chips: Each sample is recorded for the lithology, type and nature of the soil. The surface topography and type is recorded at the sample location.
Sub-sampling techniques and sample preparation	<ul style="list-style-type: none"> • <i>If core, whether cut or sawn and whether quarter, half or all core taken.</i> • <i>If non-core, whether riffled, tube sampled, rotary split, etc and whether sampled wet or dry.</i> • <i>For all sample types, the nature, quality, and appropriateness of the sample preparation technique.</i> • <i>Quality control procedures adopted for all sub-sampling stages</i> 	<ul style="list-style-type: none"> • The core is cut onsite into 1/2 and two 1/4s along the length of the core for assay, qualitative analysis and metallurgical sampling • Chip trays were taken during tri-cone for logging purposes only • Quality control procedures include submission of Certified Reference Materials (standards), field duplicates, and blanks with each sample batch. QAQC results are routinely reviewed to identify and resolve any issues • Sample preparation is completed at the laboratory. Samples are weighed, dried,

Criteria	JORC Code explanation	Commentary
	<p><i>to maximise representivity of samples.</i></p> <ul style="list-style-type: none"> • <i>Measures taken to ensure that the sampling is representative of the in-situ material collected, including for instance results for field duplicate/second-half sampling.</i> • <i>Whether sample sizes are appropriate to the grain size of the material being sampled.</i> 	<p>crushed to better than 70% passing 2mm; sample was split with a riffle splitter and a split of up to 300g pulverised to better than 85% passing 75µm</p> <ul style="list-style-type: none"> • The sample sizes are considered to be appropriate to correctly represent base metal sulphide mineralisation and associated geology based on the style of mineralisation (massive and disseminated sulphides), the thickness and consistency of the intersections and the sampling methodology • Rock Chips: QAQC was inserted at a rate of 20% to include standards, and duplicates. Internal laboratory QAQC are additional to the company's QAQC protocols and include standards, blanks and duplicates.
<p>Quality of assay data and laboratory tests</p>	<ul style="list-style-type: none"> • <i>The nature, quality and appropriateness of the assaying and laboratory procedures used and whether the technique is considered partial or total.</i> • <i>For geophysical tools, spectrometers, handheld XRF instruments, etc, the parameters used in determining the analysis including instrument make and model, reading times, calibrations factors applied and their derivation, etc.</i> • <i>Nature of quality control procedures adopted (e.g., standards, blanks, duplicates, external laboratory checks) and whether acceptable levels of accuracy (i.e., lack of bias) and precision have been established.</i> 	<ul style="list-style-type: none"> • Diamond core samples from American West are assayed at ALS Laboratories, Vancouver, British Columbia • All American West samples are assayed for Ag, Al, As, Ba, Be, Bi, Ca, Cd, Ce, Co, Cr, Cs, Cu, Fe, Ga, Ge, Hf, In, K, La, Li, Mg, Mn, Mo, Na, Nb, Ni, P, Pb, Rb, Re, S, Sb, Sc, Se, Sn, Sr, Ta, Te, Th, Ti, Tl, U, V, W, Y, Zn, Zr, Cu, Pb, Zn and Au using the ME-MS61 + FA 48 element suite method • Assays with over limits are re-assayed using ore grade ORE-5a analysis • Samples are assayed for Au using Fire Assay • The assay method and detection limits are appropriate for analysis of the desired elements • Laboratory QAQC involves the use of internal lab standards using certified reference material (CRMs), blanks and pulp duplicates as part of in-house procedures. The Company also submits a suite of CRMs, blanks, and selects appropriate samples for duplicates • Historical drilling has used a variety of assay element suites. Earlier drilling did not include the assaying of indium (and other metals) • The gravity surveys were completed LaCoste & Romberg Model-G and Scintrex CG-5 Autograv gravity meters. • Surveys at 100m by 100m spacings, orientated to 0 degrees, were used around the West Desert Deposit area. • Surveys at 400m x 400m spacings, orientated to 0 degrees, were used for the regional areas.

Criteria	JORC Code explanation	Commentary
Verification of sampling and assaying	<ul style="list-style-type: none"> • <i>The verification of significant intersections by either independent or alternative company personnel.</i> • <i>The use of twinned holes.</i> • <i>Documentation of primary data, data entry procedures, data verification, data storage (physical and electronic) protocols.</i> • <i>Discuss any adjustment to assay data.</i> 	<ul style="list-style-type: none"> • Significant intersections are verified by the Company’s technical staff and a suitably qualified Competent Person • No twinned holes have been drilled or used • Primary data is captured onto a laptop spreadsheet and includes geological logging, sample data and QA/QC information. This data, together with the assay data, is validated and entered into the American West Metals server in Perth, Australia • No assay data is adjusted
Location of data points	<ul style="list-style-type: none"> • <i>Accuracy and quality of surveys used to locate drill holes (collar and down-hole surveys), trenches, mine workings and other locations used in Mineral Resource estimation.</i> • <i>Specification of the grid system used.</i> • <i>Quality and adequacy of topographic control.</i> 	<ul style="list-style-type: none"> • The WGS84 UTM Zone 12N coordinate system is used • Drill hole collars are located with a handheld GPS with an expected accuracy of +/-5m for easting, northing, and elevation • The sample locations are determined by using a handheld GPS system with an expected accuracy of +/-5m for easting, northing and elevation. This is considered adequate for the type and purpose of the surveys. • Historical drill holes locations have been resurveyed and checked where possible • The gravity survey is tied to a gravity base designated SHED that was established August 06, 2021 using the long-term drift corrected values from CG-5 1211. The SHED gravity base is tied to a gravity base established at the Days Inn in Delta, UT which was in turn tied to the U.S. Department of Defence (reference number 4617-1) gravity base in Beaver, Utah (Jablonski, 1974). • All gravity stations were surveyed using the Real-Time Kinematic (RTK) GPS method or, where it was not possible to receive GPS base information via radio modem, the Post-Processing Kinematic (PPK) or Fast-Static (FS) method was used. • Trimble SPS88x/R8/5700 receivers, Trimble Model TSC2 controllers, Trimble TrimMark III, TDL and PDL base/repeater radios and Trimble Zephyr GPS antennas were used on the survey. • The GEOID18 (Conus) geoid model was used to calculate the North American Vertical Datum of NAVD88 elevations.

Criteria	JORC Code explanation	Commentary
Data spacing and distribution	<ul style="list-style-type: none"> • <i>Data spacing for reporting of Exploration Results.</i> • <i>Whether the data spacing, and distribution is sufficient to establish the degree of geological and grade continuity appropriate for the Mineral Resource and Ore Reserve estimation procedure(s) and classifications applied.</i> • <i>Whether sample compositing has been applied.</i> 	<ul style="list-style-type: none"> • The drilling results in this report are sufficient to establish the degree of geological and grade continuity to support the definition of Mineral Resource and the classifications applied under the 2012 JORC code • Drilling data was composited to 1.0m and 2.5m lengths dependent on the lithologic unit being estimated • Gravity 100m by 100m spacings, orientated to 0 degrees, were used around the West Desert Deposit area. • Gravity 400m x 400m spacings, orientated to 0 degrees, were used for the regional areas. • These gravity spacings are considered effective for the detection of mineralisation present at the West Desert Project • Rock chips: No specific data spacing or quantity is used for this survey.
Orientation of data in relation to geological structure	<ul style="list-style-type: none"> • <i>Whether the orientation of sampling achieves unbiased sampling of possible structures and the extent to which this is known, considering the deposit type.</i> • <i>If the relationship between the drilling orientation and the orientation of key mineralised structures is considered to have introduced a sampling bias, this should be assessed and reported if material.</i> 	<ul style="list-style-type: none"> • The drill holes are designed to intersect the mineralised zones at a near perpendicular orientation (unless otherwise stated). However, the orientation of key structures may be locally variable and any relationship to mineralisation has yet to be identified • No orientation-based sampling bias has been identified in the data to date • Surface gravity surveys are considered effective and unbiased for detecting the high-density contrasts between the variable lithology of the area. • Rock Chips: The rock chip samples are taken at the discretion of the geologist on site. However, the orientation of key structures may be noted whilst mapping exercises are undertaken.
Sample security	<ul style="list-style-type: none"> • <i>The measures taken to ensure sample security.</i> 	<ul style="list-style-type: none"> • All drill core is handled by company personnel or suitable contractors • All core cutting and handling follows documented procedures • There is chain of custody documentation for all shipments of samples in sealed bags from secured storage on site to the assay lab
Audits or reviews	<ul style="list-style-type: none"> • <i>The results of any audits or reviews of sampling techniques and data.</i> 	<ul style="list-style-type: none"> • An independent third-party review was completed by a competent person during logging, cutting, and prepping for sample shipment • Stantec completed an onsite inspection of the core storage, sampling, and processing facilities during 2022.

Section 2 Reporting of Exploration Results

(Criteria listed in the preceding section also apply to this section.)

Criteria	JORC Code explanation	Commentary
Mineral tenement and land tenure status	<ul style="list-style-type: none"> Type, reference name/number, location and ownership including agreements or material issues with third parties such as joint ventures, partnerships, overriding royalties, native title interests, historical sites, wilderness or national park and environmental settings. The security of the tenure held at the time of reporting along with any known impediments to obtaining a license to operate in the area. 	<ul style="list-style-type: none"> West Desert property consists of 336 unpatented lode mining claims; all or part interest in 20 patented mining claims covering 330 acres, which are now private land; and one state mineral lease. The property has an aggregate area of approximately 32km². All tenements and permits are in good standing per the 2022 record survey.
Exploration done by other parties	<ul style="list-style-type: none"> Acknowledgment and appraisal of exploration by other parties. 	<ul style="list-style-type: none"> Pinnacle completed conducted heavy-metal geochemical sampling, geological mapping, and a VLF-EM geophysical survey during 1958–59, including two core drill holes totalling 228.6m (C-1 and C-2). From 1961 to 1985, Utah drilled 39 core holes totalling 16,555.8 m and eight RC holes totalling 609.5 m. The Main Zone sulphide zinc and oxide deposits were discovered during this time. Noble Peak purchased the property in 1985 from Utah, carried out a small soil and rock geochemical survey, and sampled the old drill core and mine dumps for their potential to support a silver leaching operation. In 1990, a joint venture between Cyprus and Mitsui Mining & Smelting Co. Ltd. (Mitsui) obtained an option to earn a 50% interest in the property from Noble Peak. Cyprus completed 15.3 line-km of gradient-array IP resistivity and 3.2 line-km of dipole-dipole IP surveying along with surface geological mapping. This led to identification of the main West Desert anomaly, its continuation to the east toward and under the Galena and Utah mines, and a new doughnut-shaped anomaly in the north-eastern quadrant of the survey area. By the end of 1991, Cyprus had completed 17 DD holes totalling 9,434.6m and two RC holes totalling 670.6m and had undertaken preliminary metallurgical studies. Cyprus relinquished its option on the property to Noble Peak in 1993. In 1994, Noble Peak carried out a small prospecting and surface rock geochemical program to investigate the possibility of zone(s) of gold enrichment. In 1998, Noble Peak changed its name to Vaaldiam Resources Ltd (Vaaldiam), began to concentrate on diamond exploration, and optioned the property to Sierra Gigantes Resources Inc. (Sierra). Sierra carried out an enzyme leach soil sampling survey prior to relinquishing its option.

Criteria	JORC Code explanation	Commentary
		<ul style="list-style-type: none"> In 2001, EuroZinc Mining Corporation (EuroZinc) purchased the West Desert property from Vaaldiam by purchasing a 100% equity interest in N.P.R. (US), Inc., a Nevada corporation and wholly owned subsidiary of Vaaldiam whose sole asset was the mineral title to the West Desert property. Other than compiling some of the historical results in a computer database, EuroZinc did not conduct any work. In 2005, Lithic purchased N.P.R. (US), Inc. from EuroZinc, thereby acquiring the West Desert property. From 2006, Lithic has conducted exploration that included photogrammetry, a helicopter-borne magnetic survey, and a pole-dipole IP survey. In 2007–08, Lithic completed 10,639m of core drilling, and undertook preliminary metallurgical test work. In 2009, Lithic completed metallurgical test work to evaluate recovery of zinc and copper in both the oxide and sulphide portions of the orebody. In 2013, Lithic completed test work to evaluate magnetite recovery. In February 2014, the company changed its name from Lithic to InZinc Mining Ltd. In March 2014, InZinc Mining Ltd published a NI 43-101 compliant Preliminary Economic Assessment on the West Desert Deposit titled “Technical Report on the West Desert Zinc-Copper-Indium-Magnetite Project”. In 2018, InZinc completed 5 DD holes totalling 3,279m to test and expand the mineralisation model generated for the PEA in 2014.
<p>Geology</p>	<ul style="list-style-type: none"> <i>Deposit type, geological setting and style of mineralisation.</i> 	<ul style="list-style-type: none"> Base metal mineralisation discovered to date on the West Desert property consists of sphalerite with minor chalcopyrite, molybdenite, and galena occurring in a series of concordant to discordant magnetite-bearing skarns and replacement bodies in carbonate rocks south of, and adjacent to, a quartz monzonite intrusive complex. Other metals such as silver, indium, gallium, and germanium, are found within the base metals and can be important economic additions. Two main types of skarn have been distinguished on the basis of mineralogy, generally reflecting the chemistry of the host rock: a) the most common type is magnesian, consisting of humite ± magnetite ± phlogopite along with lesser spinel, periclase, actinolite, forsterite and tremolite and b) less common type of skarn/carbonate replacement deposit (CRD) is more calcareous in composition. It generally exhibits a less disrupted character, with preserved bedding replaced by alternating bands of reddish-brown grossularite garnet separated by bands of fine-grained diopside and potassium feldspar, probably reflecting a protolith of thinly bedded limestone with shaly partings. Magnetite is occasionally present. The Main Zone mineralisation has been traced with drilling over a length of about

Criteria	JORC Code explanation	Commentary
		<p>525m, a width of about 150m, and to a depth of 575m, and remains open to the west and to depth.</p> <ul style="list-style-type: none"> • The Main Zone has been oxidised to an average depth of about 250m. • The Deep Zone is located immediately south of the Juab Fault and is hosted predominantly in thinly bedded limestones and shaley members of the Orr Formation. • Within the Deep Zone, three separate CRD style mineralised horizons have been identified through drilling over an area of about 330m by 225m at depths from about 450m to 750m. They remain open at depth and to the west, south, and east.
<p>Drill hole Information</p>	<ul style="list-style-type: none"> • A summary of all information material to the understanding of the exploration results including a tabulation of the following information for all Material drill holes: <ul style="list-style-type: none"> ○ easting and northing of the drill hole collar ○ elevation or RL (Reduced Level – elevation above sea level in metres) of the drill hole collar ○ dip and azimuth of the hole ○ down hole length and interception depth ○ hole length. • If the exclusion of this information is justified on the basis that the information is not Material and this exclusion does not detract from the understanding of the report, the Competent Person should clearly explain why this is the case. 	<ul style="list-style-type: none"> • Historical drilling and significant intercepts have been independently compiled by Stantec and can be found in the MRE • Supporting drillhole information (easting, northing, elevation, dip, azimuth, down hole length) is supplied within the MRE
<p>Data aggregation methods</p>	<ul style="list-style-type: none"> • In reporting Exploration Results, weighting averaging techniques, maximum and/or minimum grade truncations (eg cutting of high grades) and cut-off grades are usually Material and should be stated. • Where aggregate intercepts incorporate short lengths of high-grade results and longer lengths of low-grade results, the procedure used for such aggregation should be stated and some typical examples of such aggregations should be shown in detail. • The assumptions used for any reporting of metal equivalent values should be clearly stated. 	<ul style="list-style-type: none"> • Weighted average grades are used for reporting drill intersections. The intersection begins at the start of the first selected sample and ends after the last sample in the interval. • The cut-off grade for the reporting of metal values varies. Precious metal content is reported as zinc equivalency to cut-off grades. • Where individual grades are quoted, the sampling depth is shown. • Metal equivalents are applied to cut-off grades and grade-tonnage curves. • Visual mineralisation is reported as the dominant mineral habit and abundance for the given interval. Intervals may include minor types of other styles of mineralisation.

Criteria	JORC Code explanation	Commentary
Relationship between mineralisation widths and intercept lengths	<ul style="list-style-type: none"> • <i>These relationships are particularly important in the reporting of Exploration Results.</i> • <i>If the geometry of the mineralisation with respect to the drill hole angle is known, its nature should be reported.</i> • <i>If it is not known and only the down hole lengths are reported, there should be a clear statement to this effect (eg 'down hole length, true width not known').</i> 	<ul style="list-style-type: none"> • All intervals are reported as down hole lengths. • Given the geometry of mineralization and drill hole design, the intervals are expected to be close to true widths
Diagrams	<ul style="list-style-type: none"> • <i>Appropriate maps and sections (with scales) and tabulations of intercepts should be included for any significant discovery being reported These should include, but not be limited to a plan view of drill hole collar locations and appropriate sectional views.</i> 	<ul style="list-style-type: none"> • A prospect location map and cross sections are shown in the body of the announcement
Balanced reporting	<ul style="list-style-type: none"> • <i>Where comprehensive reporting of all Exploration Results is not practicable, representative reporting of both low and high grades and/or widths should be practiced to avoid misleading reporting of Exploration Results.</i> 	<ul style="list-style-type: none"> • All known explorations results have been reported • Reports on other exploration activities at the project can be found in ASX Releases that are available on our website www.americanwestmetals.com
Other substantive exploration data	<ul style="list-style-type: none"> • <i>Other exploration data, if meaningful and material, should be reported including (but not limited to): geological observations; geophysical survey results; geochemical survey results; bulk samples – size and method of treatment; metallurgical test results; bulk density, groundwater, geotechnical and rock characteristics; potential deleterious or contaminating substances.</i> 	<ul style="list-style-type: none"> • All material or meaningful data collected has been reported.
Further work	<ul style="list-style-type: none"> • <i>The nature and scale of planned further work (eg tests for lateral extensions or depth extensions or large-scale step-out drilling).</i> • <i>Diagrams clearly highlighting the areas of possible extensions, including the main geological interpretations and future drilling areas, provided this information is not commercially sensitive.</i> 	<ul style="list-style-type: none"> • Further metallurgical test work will aim to provide a robust metallurgical and mineralogical model and refine the processing flowsheet. • Technical reporting on the resource modelling and estimation using recent and historical drill hole data is currently underway. • Subsequent activities are being planned and includes testing geophysical targets and other high priority exploration targets with drilling within the project area.

Section 3 Estimation and Reporting of Mineral Resources – Zinc, Copper, Silver

(Criteria listed in section 1, and where relevant in section 2, also apply to this section.)

Criteria	JORC Code explanation	Commentary
Database integrity	<ul style="list-style-type: none"> Measures taken to ensure that data has not been corrupted by, for example, transcription or keying errors, between its initial collection and its use for Mineral Resource estimation purposes. Data validation procedures used. 	<ul style="list-style-type: none"> Drill hole data was maintained by CGS Geo. Services. Stantec CP independently reviewed the drill hole database for: <ul style="list-style-type: none"> duplicate samples, interval overlaps, interval sequence, extra horizons, and assay value review/ statistics.
Site visits	<ul style="list-style-type: none"> Comment on any site visits undertaken by the Competent Person and the outcome of those visits. If no site visits have been undertaken indicate why this is the case. 	<ul style="list-style-type: none"> CP representative from Stantec conducted site visits The West Desert Site, Utah and American Assay Labs (AAL), Reno Nevada during Dec 2022 and reviewed the following: <ul style="list-style-type: none"> West Desert Site, Utah Drill hole location Logging/ Sampling procedures AAL Reno, Nevada Assay Methodologies and Internal QA/ QC
Geological interpretation	<ul style="list-style-type: none"> Confidence in (or conversely, the uncertainty of) the geological interpretation of the mineral deposit. Nature of the data used and of any assumptions made. The effect, if any, of alternative interpretations on Mineral Resource estimation. The use of geology in guiding and controlling Mineral Resource estimation. The factors affecting continuity both of grade and geology. 	<ul style="list-style-type: none"> Geologic Interpretations were provided by CGS Geo. Services in conjunction with American West Metals Limited. The geologic interpretation was a continuation of previous work completed by Mine Development Associates (MDA) for InZinc Mining Ltd. in the 2014 Technical Report (Technical Report on the West Desert Zinc-Copper-Indium-Magnetite Project Preliminary Economic Assessment Juab County, Utah). The Stantec CP reviewed the provide interpretations for use in development of the resource estimation. A redox boundary was developed by CGS Geo. Services and used to assign oxide vs. sulphide material

Criteria	JORC Code explanation	Commentary
<i>Dimensions</i>	<ul style="list-style-type: none"> <i>The extent and variability of the Mineral Resource expressed as length (along strike or otherwise), plan width, and depth below surface to the upper and lower limits of the Mineral Resource.</i> 	<ul style="list-style-type: none"> The extent of the resource is approximately 700 m (x) by 500m (y) by 775m (z).
<i>Estimation and modelling techniques</i>	<ul style="list-style-type: none"> <i>The nature and appropriateness of the estimation technique(s) applied and key assumptions, including treatment of extreme grade values, domaining, interpolation parameters and maximum distance of extrapolation from data points. If a computer assisted estimation method was chosen include a description of computer software and parameters used.</i> <i>The availability of check estimates, previous estimates and/or mine production records and whether the Mineral Resource estimate takes appropriate account of such data.</i> <i>The assumptions made regarding recovery of by-products.</i> <i>Estimation of deleterious elements or other non-grade variables of economic significance (eg sulphur for acid mine drainage characterisation).</i> <i>In the case of block model interpolation, the block size in relation to the average sample spacing and the search employed.</i> <i>Any assumptions behind modelling of selective mining units.</i> <i>Any assumptions about correlation between variables.</i> <i>Description of how the geological interpretation was used to control the resource estimates.</i> <i>Discussion of basis for using or not using grade cutting or capping.</i> <i>The process of validation, the checking process used, the comparison of model data to drill hole data, and use of reconciliation data if available.</i> 	<ul style="list-style-type: none"> Maptek’s Vulcan 3D mine planning & geological modelling software was used for the block model creation and block grade estimation. Inverse Distance Squared (ID²) was used for the estimation methodology. The estimation passes search were anisotropic and oriented based on each modeled lithologic domain. Block sizing ranges from 5m down to 2.5m Each Identified lithologic domain was estimated independently and 1.5m composite samples were flagged for use and limited to each domain’s estimation. The 1.5m composite sets were capped/ cut based on log normal plots and box plot results of the sample distributions for each independent lithologic domain.
<i>Moisture</i>	<ul style="list-style-type: none"> <i>Whether the tonnages are estimated on a dry basis or with natural moisture, and the method of determination of the moisture content.</i> 	<ul style="list-style-type: none"> Legacy drilling pre-2022 was measured for specific gravity (SG) on site using the wet/dry immersion weight technique. 2022 drilling SG was measured using the same technique by an independant lab.
<i>Cut-off parameters</i>	<ul style="list-style-type: none"> <i>The basis of the adopted cut-off grade(s) or quality parameters applied.</i> 	<ul style="list-style-type: none"> Cut-off parameters were based on recovered zinc only for oxide heap leach material and utilize a zinc equivalent for oxide mill leach and sulphide mill flotation material. The cutoff grades reflect assumed mining methods, processing methodology, general and administrative (G&A) and haulage costs

Criteria	JORC Code explanation	Commentary
<p><i>Mining factors or assumptions</i></p>	<ul style="list-style-type: none"> Assumptions made regarding possible mining methods, minimum mining dimensions and internal (or, if applicable, external) mining dilution. It is always necessary as part of the process of determining reasonable prospects for eventual economic extraction to consider potential mining methods, but the assumptions made regarding mining methods and parameters when estimating Mineral Resources may not always be rigorous. Where this is the case, this should be reported with an explanation of the basis of the mining assumptions made. 	<ul style="list-style-type: none"> The assumed mining factors were open pit and longhole open stoping methods. The minimum stope width applied to the MRE was 3-5m.
<p><i>Metallurgical factors or assumptions</i></p>	<ul style="list-style-type: none"> The basis for assumptions or predictions regarding metallurgical amenability. It is always necessary as part of the process of determining reasonable prospects for eventual economic extraction to consider potential metallurgical methods, but the assumptions regarding metallurgical treatment processes and parameters made when reporting Mineral Resources may not always be rigorous. Where this is the case, this should be reported with an explanation of the basis of the metallurgical assumptions made. 	<ul style="list-style-type: none"> Numerous metallurgical test programs have been completed on representative samples of mineralisation from the West Desert Deposit. The defining assumed processing recoveries are bases on the results of these programs and are as follows: <ul style="list-style-type: none"> Oxide Material Heap leach (HL) processing recovery- 65% Zinc only. Oxide Material Mill Leach (ML) processing recovery- 85% Zinc and 70% Copper. Sulphide Material Mill Flotation (MF) processing recovery- 87% Zinc, 70% Copper, and 80% Silver.
<p><i>Environmental factors or assumptions</i></p>	<ul style="list-style-type: none"> Assumptions made regarding possible waste and process residue disposal options. It is always necessary as part of the process of determining reasonable prospects for eventual economic extraction to consider the potential environmental impacts of the mining and processing operation. While at this stage the determination of potential environmental impacts, particularly for a greenfields project, may not always be well advanced, the status of early consideration of these potential environmental impacts should be reported. Where these aspects have not been considered this should be reported with an explanation of the environmental assumptions made. 	<ul style="list-style-type: none"> No restricting environmental assumptions have been applied

Criteria	JORC Code explanation	Commentary
<i>Bulk density</i>	<ul style="list-style-type: none"> • <i>Whether assumed or determined. If assumed, the basis for the assumptions. If determined, the method used, whether wet or dry, the frequency of the measurements, the nature, size and representativeness of the samples.</i> • <i>The bulk density for bulk material must have been measured by methods that adequately account for void spaces (vugs, porosity, etc), moisture and differences between rock and alteration zones within the deposit.</i> • <i>Discuss assumptions for bulk density estimates used in the evaluation process of the different materials.</i> 	<ul style="list-style-type: none"> • No bulk density samples have been acquired at this stage of the project. • Core density samples were used to develop each modeled lithology. The samples were flagged for the corresponding lithology and box plots were used to determine the high (97.5 percentile) and low (2.5 percentile) outliers, which were subsequently removed, to gain the mean density for each lithology type and were coded in the model.
<i>Classification</i>	<ul style="list-style-type: none"> • <i>The basis for the classification of the Mineral Resources into varying confidence categories.</i> • <i>Whether appropriate account has been taken of all relevant factors (ie relative confidence in tonnage/grade estimations, reliability of input data, confidence in continuity of geology and metal values, quality, quantity and distribution of the data).</i> • <i>Whether the result appropriately reflects the Competent Person’s view of the deposit.</i> 	<ul style="list-style-type: none"> • Material confidence classifications were based on the three estimation pass parameters. <ul style="list-style-type: none"> • First pass- Indicated • Second Pass- Inferred • Third Pass- Unclassified/ Potential • The Stantec CP then reviewed the estimation pass results to smooth the confidence results to eliminate any numerical gaps in the estimation results.
<i>Audits or reviews</i>	<ul style="list-style-type: none"> • <i>The results of any audits or reviews of Mineral Resource estimates.</i> 	<ul style="list-style-type: none"> • Currently, no audits have been performed on the Mineral Resource Estimate
<i>Discussion of relative accuracy/ confidence</i>	<ul style="list-style-type: none"> • <i>Where appropriate a statement of the relative accuracy and confidence level in the Mineral Resource estimate using an approach or procedure deemed appropriate by the Competent Person. For example, the application of statistical or geostatistical procedures to quantify the relative accuracy of the resource within stated confidence limits, or, if such an approach is not deemed appropriate, a qualitative discussion of the factors that could affect the relative accuracy and confidence of the estimate.</i> • <i>The statement should specify whether it relates to global or local estimates, and, if local, state the relevant tonnages, which should be relevant to technical and economic evaluation. Documentation should include assumptions made and the procedures used.</i> • <i>These statements of relative accuracy and confidence of the estimate should be compared with production data, where available.</i> 	<ul style="list-style-type: none"> • Stantec’s CP feels that the Mineral Resource Estimate presented herein meets the indicated and inferred levels of assurance

Section 3 Estimation and Reporting of Mineral Resources – Indium and Gold

(Criteria listed in section 1, and where relevant in section 2, also apply to this section.)

Criteria	JORC Code explanation	Commentary
Database integrity	<ul style="list-style-type: none"> Measures taken to ensure that data has not been corrupted by, for example, transcription or keying errors, between its initial collection and its use for Mineral Resource estimation purposes. Data validation procedures used. 	<ul style="list-style-type: none"> Drill hole data was maintained by CGS Geo. Services and American West Metals Ltd. Stantec CP independently reviewed the drill hole database for: <ul style="list-style-type: none"> duplicate samples, interval overlaps, interval sequence, extra horizons, and assay value review/ statistics.
Site visits	<ul style="list-style-type: none"> Comment on any site visits undertaken by the Competent Person and the outcome of those visits. If no site visits have been undertaken indicate why this is the case. 	<ul style="list-style-type: none"> CP representative from Stantec conducted site visits The West Desert Site, Utah and American Assay Labs (AAL), Reno Nevada during Dec 2022 and reviewed the following: <ul style="list-style-type: none"> West Desert Site, Utah Drill hole location Logging/ Sampling procedures AAL Reno, Nevada Assay Methodologies and Internal QA/ QC
Geological interpretation	<ul style="list-style-type: none"> Confidence in (or conversely, the uncertainty of) the geological interpretation of the mineral deposit. Nature of the data used and of any assumptions made. The effect, if any, of alternative interpretations on Mineral Resource estimation. The use of geology in guiding and controlling Mineral Resource estimation. The factors affecting continuity both of grade and geology. 	<ul style="list-style-type: none"> Geologic Interpretations were provided by CGS Geo. Services in conjunction with American West Metals Limited. The geologic interpretation was a continuation of previous work completed by Mine Development Associates (MDA) for InZinc Mining Ltd. in the 2014 Technical Report (Technical Report on the West Desert Zinc-Copper-Indium-Magnetite Project Preliminary Economic Assessment Juab County, Utah). The Stantec CP reviewed the provide interpretations for use in development of the resource estimation. A redox boundary was developed by CGS Geo. Services and used to assign oxide vs. sulphide material

Criteria	JORC Code explanation	Commentary
<i>Dimensions</i>	<ul style="list-style-type: none"> <i>The extent and variability of the Mineral Resource expressed as length (along strike or otherwise), plan width, and depth below surface to the upper and lower limits of the Mineral Resource.</i> 	<ul style="list-style-type: none"> The extent of the resource is approximately 700 m (x) by 500m (y) by 775m (z).
<i>Estimation and modelling techniques</i>	<ul style="list-style-type: none"> <i>The nature and appropriateness of the estimation technique(s) applied and key assumptions, including treatment of extreme grade values, domaining, interpolation parameters and maximum distance of extrapolation from data points. If a computer assisted estimation method was chosen include a description of computer software and parameters used.</i> <i>The availability of check estimates, previous estimates and/or mine production records and whether the Mineral Resource estimate takes appropriate account of such data.</i> <i>The assumptions made regarding recovery of by-products.</i> <i>Estimation of deleterious elements or other non-grade variables of economic significance (eg sulphur for acid mine drainage characterisation).</i> <i>In the case of block model interpolation, the block size in relation to the average sample spacing and the search employed.</i> <i>Any assumptions behind modelling of selective mining units.</i> <i>Any assumptions about correlation between variables.</i> <i>Description of how the geological interpretation was used to control the resource estimates.</i> <i>Discussion of basis for using or not using grade cutting or capping.</i> <i>The process of validation, the checking process used, the comparison of model data to drill hole data, and use of reconciliation data if available.</i> 	<ul style="list-style-type: none"> Maptek’s Vulcan 3D mine planning & geological modelling software was used for the block model creation and block grade estimation. Inverse Distance Squared (ID²) was used for the estimation methodology. The estimation passes search were anisotropic and oriented based on each modeled lithologic domain. Block sizing ranges from 5m down to 2.5m Each Identified lithologic domain was estimated independently and 1.5m composite samples were flagged for use and limited to each domain’s estimation. The 1.5m composite sets were capped/cut based on log normal plots and box plot results of the sample distributions for each independent lithologic domain.
<i>Moisture</i>	<ul style="list-style-type: none"> <i>Whether the tonnages are estimated on a dry basis or with natural moisture, and the method of determination of the moisture content.</i> 	<ul style="list-style-type: none"> Legacy drilling pre-2022 was measured for specific gravity (SG) on site using the wet/dry immersion weight technique. 2022 drilling SG was measured using the same technique by an independent lab.
<i>Cut-off parameters</i>	<ul style="list-style-type: none"> <i>The basis of the adopted cut-off grade(s) or quality parameters applied.</i> 	<ul style="list-style-type: none"> Cut-off parameters were based on recovered zinc only for oxide heap leach material and utilize a zinc equivalent for oxide mill leach and sulphide mill flotation material. The cutoff grades reflect assumed mining methods, processing methodology, general and administrative (G&A) and haulage costs

Criteria	JORC Code explanation	Commentary
<p><i>Mining factors or assumptions</i></p>	<ul style="list-style-type: none"> Assumptions made regarding possible mining methods, minimum mining dimensions and internal (or, if applicable, external) mining dilution. It is always necessary as part of the process of determining reasonable prospects for eventual economic extraction to consider potential mining methods, but the assumptions made regarding mining methods and parameters when estimating Mineral Resources may not always be rigorous. Where this is the case, this should be reported with an explanation of the basis of the mining assumptions made. 	<ul style="list-style-type: none"> The assumed mining factors were open pit and longhole open stoping methods. The minimum stope width applied to the MRE was 3-5m.
<p><i>Metallurgical factors or assumptions</i></p>	<ul style="list-style-type: none"> The basis for assumptions or predictions regarding metallurgical amenability. It is always necessary as part of the process of determining reasonable prospects for eventual economic extraction to consider potential metallurgical methods, but the assumptions regarding metallurgical treatment processes and parameters made when reporting Mineral Resources may not always be rigorous. Where this is the case, this should be reported with an explanation of the basis of the metallurgical assumptions made. 	<ul style="list-style-type: none"> Numerous metallurgical test programs have been completed on representative samples of mineralisation from the West Desert Deposit. The defining assumed processing recoveries are bases on the results of these programs and are as follows: <ul style="list-style-type: none"> Oxide Material Heap leach (HL) processing recovery- 65% Zinc only. Oxide Material Mill Leach (ML) processing recovery- 85% Zinc and 70% Copper. Sulphide Material Mill Flotation (MF) processing recovery- 87% Zinc, 70% Copper, and 80% Silver.
<p><i>Environmental factors or assumptions</i></p>	<ul style="list-style-type: none"> Assumptions made regarding possible waste and process residue disposal options. It is always necessary as part of the process of determining reasonable prospects for eventual economic extraction to consider the potential environmental impacts of the mining and processing operation. While at this stage the determination of potential environmental impacts, particularly for a greenfields project, may not always be well advanced, the status of early consideration of these potential environmental impacts should be reported. Where these aspects have not been considered this should be reported with an explanation of the environmental assumptions made. 	<ul style="list-style-type: none"> No restricting environmental assumptions have been applied

Criteria	JORC Code explanation	Commentary
<i>Bulk density</i>	<ul style="list-style-type: none"> • <i>Whether assumed or determined. If assumed, the basis for the assumptions. If determined, the method used, whether wet or dry, the frequency of the measurements, the nature, size and representativeness of the samples.</i> • <i>The bulk density for bulk material must have been measured by methods that adequately account for void spaces (vugs, porosity, etc), moisture and differences between rock and alteration zones within the deposit.</i> • <i>Discuss assumptions for bulk density estimates used in the evaluation process of the different materials.</i> 	<ul style="list-style-type: none"> • No bulk density samples have been acquired at this stage of the project. • Core density samples were used to develop each modeled lithology. The samples were flagged for the corresponding lithology and box plots were used to determine the high (97.5 percentile) and low (2.5 percentile) outliers, which were subsequently removed, to gain the mean density for each lithology type and were coded in the model.
<i>Classification</i>	<ul style="list-style-type: none"> • <i>The basis for the classification of the Mineral Resources into varying confidence categories.</i> • <i>Whether appropriate account has been taken of all relevant factors (ie relative confidence in tonnage/grade estimations, reliability of input data, confidence in continuity of geology and metal values, quality, quantity and distribution of the data).</i> • <i>Whether the result appropriately reflects the Competent Person’s view of the deposit.</i> 	<ul style="list-style-type: none"> • Material confidence classifications were based on the three estimation pass parameters. <ul style="list-style-type: none"> • First pass- Indicated • Second Pass- Inferred • Third Pass- Unclassified/ Potential • The Stantec CP then reviewed the estimation pass results to smooth the confidence results to eliminate any numerical gaps in the estimation results.
<i>Audits or reviews</i>	<ul style="list-style-type: none"> • <i>The results of any audits or reviews of Mineral Resource estimates.</i> 	<ul style="list-style-type: none"> • Currently, no audits have been performed on the Mineral Resource Estimate
<i>Discussion of relative accuracy/ confidence</i>	<ul style="list-style-type: none"> • <i>Where appropriate a statement of the relative accuracy and confidence level in the Mineral Resource estimate using an approach or procedure deemed appropriate by the Competent Person. For example, the application of statistical or geostatistical procedures to quantify the relative accuracy of the resource within stated confidence limits, or, if such an approach is not deemed appropriate, a qualitative discussion of the factors that could affect the relative accuracy and confidence of the estimate.</i> • <i>The statement should specify whether it relates to global or local estimates, and, if local, state the relevant tonnages, which should be relevant to technical and economic evaluation. Documentation should include assumptions made and the procedures used.</i> • <i>These statements of relative accuracy and confidence of the estimate should be compared with production data, where available.</i> 	<ul style="list-style-type: none"> • Stantec’s CP feels that the Mineral Resource Estimate presented herein meets the inferred levels of assurance