

# AMERICAN WEST METALS LIMITED

MAY 2026

For personal use only



<sup>29</sup>  
**Cu**  
Copper

**325,000t\***  
Copper

<sup>49</sup>  
**In**  
Indium

**23,763,000oz\***  
Indium

<sup>30</sup>  
**Zn**  
Zinc

**1,290,000t\***  
Zinc

# Important Notice and Disclaimer

This presentation has been prepared and issued by American West Metals Limited (the Company or American West) to inform interested parties about the Company and its progress. The material contained in this presentation sets out general background information on the Company and its activities. It does not constitute or contain an offer or invitation to subscribe for or purchase any securities in the Company nor does it constitute an inducement to make an offer or invitation with respect to those securities. No agreement to subscribe for or purchase securities in the Company will be entered into on the basis of this presentation.

The information supplied is in summary form and does not purport to be complete. The Company, its directors, officers, employees, agents, affiliates and advisers have not verified the accuracy or completeness of the information, statements and opinions contained in this presentation. Accordingly, to the maximum extent permitted by law, the Company makes no representation and gives no assurance, guarantee or warranty, express or implied, as to, and takes no responsibility and assumes no liability for, the authenticity, validity, accuracy, suitability or completeness of, or any errors in or omission from, any information, statement or opinion contained in this presentation.

You should neither act nor refrain from acting in reliance on this presentation material. This overview of the Company does not purport to contain all information that its recipients may require in order to make an informed assessment of the Company's prospects. You should conduct your own investigation and perform your own analysis in order to satisfy yourself as to the accuracy, and completeness of the information, statements and opinions contained in this presentation and when making any decision in relation to this presentation or the Company. The information in this presentation does not take into account the objectives, financial situations or needs of any particular individual. You should consider seeking independent professional advice based on your own objectives. To the extent permitted by law the Company, its directors, officers, employees, agents, affiliates and advisers exclude any and all liability (including, without limitation, in respect of direct, indirect or consequential loss or damage or loss or damage arising out of negligence) arising as a result of the use of anything contained in or omitted from this presentation.

This presentation may not be reproduced, redistributed or passed on, directly or indirectly, to any other person, or published, in whole or in part, for any purpose without prior written approval from the Company. The distribution of the presentation in jurisdictions outside of Australia may be restricted by law, and persons into whose possession this document comes should inform themselves about, and observe, all such restrictions.

**Cover: Drilling at the Company's West Desert Project, Utah**

**\* See the Geology and Resources on Slide 21 for details**

This presentation may include forward-looking statements. Forward-looking statements include, but are not limited to, statements concerning American West's planned exploration program and other statements that are not historical facts. Although the Company believes that its expectations reflected in these forward-looking statements are reasonable, such statements involve risks and uncertainties and no assurance can be given that actual results will be consistent with these forward-looking statements. Forward-looking statements involve known and unknown risks, uncertainties and other factors that are in some cases beyond American West's control, and which may cause actual results, performance or achievements to differ materially from those expressed or implied by the forward-looking statements. American West makes no representation or warrant as to the accuracy of any forward-looking statements in this Presentation and undue reliance should not be placed on such statements.

The forward-looking statements included in this document speak only as of the date of this document. The Company does not intend to update the forward looking statements in this document in the future.

## ASX Listing Rule 5.12

The Company has previously addressed the requirements of Listing Rule 5.12 in its Initial Public Offer prospectus dated 29 October 2021 (released to ASX on 9 December 2021) (Prospectus) in relation to the 2016 Foreign Seal MRE at the Storm Project. The Company is not in possession of any new information or data relating to the Seal Deposit that materially impacts on the reliability of the estimates or the Company's ability to verify the estimates as mineral resources or ore reserves in accordance with the JORC Code. The Company confirms that the supporting information provided in the Prospectus continues to apply and has not materially changed.

This ASX announcement contains information extracted from the following reports which are available on the Company's website at <https://www.americanwestmetals.com/site/content/>:

29 October 2021 Prospectus

The Company confirms that it is not aware of any new information or data that materially affects the exploration results included in the Prospectus. The Company confirms that the form and context in which the Competent Person's findings are presented have not been materially modified from the Prospectus.

For personal use only

# Cautionary Statement

The Preliminary Economic Analysis (PEA), or Scoping Study, referred to in this ASX release, full details of which were announced on 3 March 2025 has been undertaken for the purpose of initial valuation of the potential for development of a series of open-pit mines and a mineral processing facility at the Storm Copper Project ('Storm Project,' 'The Project' or 'Storm'). It is a preliminary technical and economic study of the potential viability of the Storm Copper Project. It is based on low level technical and economic assessments that are not sufficient to support the estimation of ore reserves. Further exploration, evaluation and study work is required to define ore reserves and to provide any assurance of an economic development case.

The PEA is based on the material assumptions outlined below, including assumptions about the availability of funding. While American West considers all of the material assumptions to be based on reasonable grounds, there is no certainty that they will prove to be correct or that the range of outcomes indicated by the Study will be achieved.

To achieve the range of outcomes indicated in the PEA, funding in the order of \$80 million will likely be required over the life of the mine. Investors should note that there is no certainty that the Company will be able to raise that amount of funding when needed. It is also possible that such funding may only be available on terms that may be dilutive to or otherwise affect the value of American West's existing shares.

It is also possible that American West could pursue other 'value realisation' strategies such as a sale, partial sale, or joint venture of the project. If it does, this could materially reduce the Company's proportionate ownership of the Project.

The Company has concluded that it has reasonable grounds for disclosing a production target which includes an amount of Inferred Mineral Resources. There is a lower level of geological confidence associated with Inferred Mineral Resources and there is no certainty that further exploration work will result in the determination of Indicated Mineral Resources or that the production target itself will be realised. Inferred and Indicated Mineral Resources comprise approximately 22% and 78% of the processed material over the operating life respectively. The viability of the development scenario envisaged in the PEA does not depend on the inclusion of Inferred Mineral Resources.

The Mineral Resources underpinning the production target in the PEA have been prepared by a Competent Person in accordance with the requirements of the Australasian Code for Reporting of Exploration Results, Mineral Resources, and Ore Reserves (JORC Code 2012). The Competent Persons Statements are found in the Geology and Resources section of this Study.

For full details of the Mineral Resource Estimate for the Storm Copper Project, including JORC Table 1, please refer to ASX announcement dated 16 December 2024: Significant Growth for Storm MRE.

American West confirms that it is not aware of any new information or data that materially affects the information included within those announcements. All material assumptions and technical parameters underpinning the estimates in those announcements continue to apply and have not materially changed.

The Study has been completed to a level of accuracy of +30% / -20%. Given the uncertainties involved, investors should not make any investment decisions based solely on the results of the PEA.

## Foreign and historical resources:

The estimates of minerals resources referred to in this presentation in regard to the Seal Zinc Project are historical and foreign in nature and are reported in accordance with Canadian NI 43-101 Standards and not in accordance with the 2012 JORC Code. A competent person has not done sufficient work to classify these estimates as mineral resources or ore reserves in accordance with the 2012 JORC Code. It is uncertain that following evaluation and/or further exploration work that the historical and foreign resource estimates of mineralisation will be able to be reported as mineral resources or ore reserves in accordance with the 2012 JORC Code. Further details of the historical and foreign estimates are contained in the Prospectus dated 21 October 2021.

**This Presentation has been approved for release  
by the Board of American West Metals Limited.**

For personal use only

# Investment Highlights

## BUILDING A MULTI-ASSET NORTH AMERICAN COPPER AND CRITICAL METAL PLATFORM



### West Desert, Utah – ‘All American’ Critical Metals

- West Desert hosts largest undeveloped indium resource in the US
- JORC compliant resource with large volumes of indium, zinc, silver, copper, gold
- Extensive critical metals in the mineral system with indications of a potential significant discovery in first drill hole of 2026
- Support from government for West Desert to play a role in the domestic US supply chain



### Storm Copper, Canada – Near-term open-pit producer

- Highly prospective 2,200+ km<sup>2</sup> sediment hosted copper belt
- High-grade copper discovered from surface with several large-scale targets to be drilled in 2026
- PEA on current resource outlines initial US\$47.4m CAPEX for a high-grade open-pit mine with strong cash flow and simple, ESG sensitive process, with development study work continuing



For personal use only

# Board and Management Team



Leadership team with a track record of discovery and mine development



**DAN LOUGHER**  
Non-Executive Chairman

Daniel Lougher is a highly regarded mining executive with a distinguished career of over 40 years' experience.

In his role as Managing Director of Western Areas Limited, Dan built the company into the leading independent nickel producer in Australia ahead of a \$1.3 billion takeover by IGO Limited in 2022.



**DAVE O'NEILL**  
Managing Director

Founder of American West and a major shareholder.

A geologist with over 20 years' experience in the resources sector gained in Australia and internationally.

Dave has expertise in base metals and gold exploration as well as business development gained in senior roles with AngloGold, WMC, BHP and Western Areas.



**JOHN PRINEAS**  
Non-Executive Director

Founder of American West and a major shareholder.

John is also the founder and Executive Chairman of St George Mining Limited (ASX: SGQ). John holds a Bachelor of Economics and Bachelor of Laws from the University of Sydney and is a Fellow of Financial Services Institute of Australasia.

John is also a director of BMG Resources Limited (ASX: BMG).



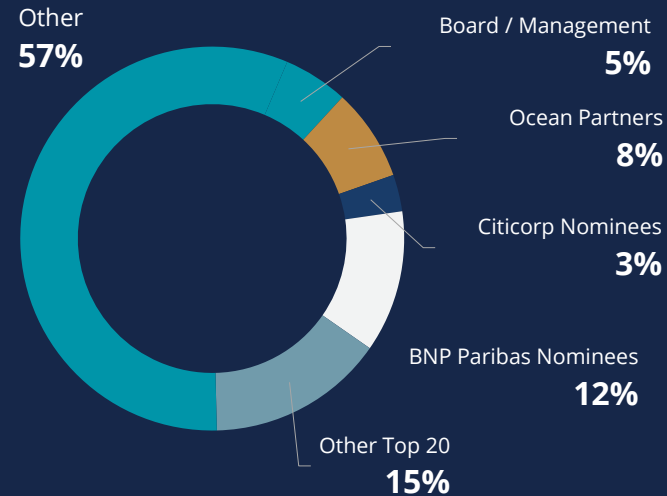
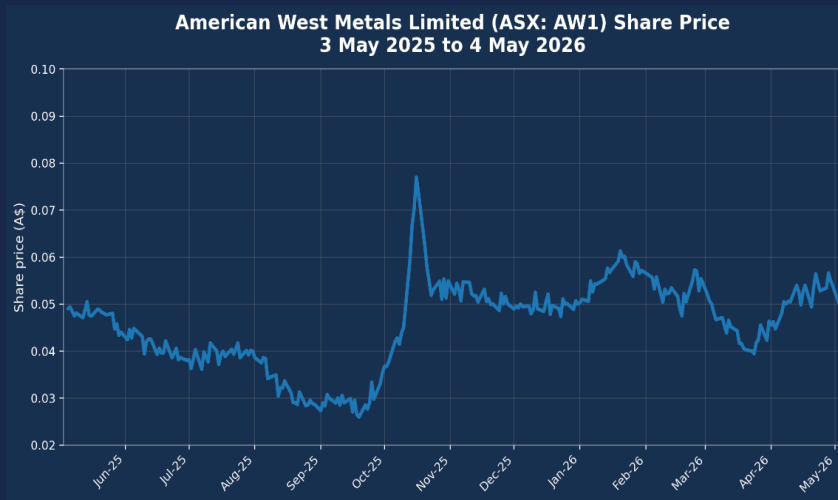
**TOM PEREGOODOFF**  
Non-Executive Director

More than 30 years of resource industry experience, much of it greenfield and brownfield exploration and resource development.

Tom is currently the Executive Chairman of Apollo Silver, and an Independent Director of Blackrock Silver Corp. Formerly President of Peregrine Diamonds Ltd. Tom also spent 18 years in global leadership roles within BHP.

# Company Snapshot

## AW1 Share Price



## Key Metrics

ASX Code : AW1 OTCQB: AWMLF

**1,229.6m** Shares on Issue<sup>1</sup>

**0.049c** Share Price<sup>2</sup>

**\$14.80m** Cash on hand as at 31 March and inclusive of the \$10m capital raise<sup>3</sup>

**\$55.40m** Market Capitalisation<sup>2</sup>

**370.7m** Listed Options<sup>1</sup>

**4.5m** Average Daily Volume (4w average)<sup>1</sup>

1. Includes the placement shares and options as announced on 4 May 2026.
2. Undiluted market capitalisation, share price and trading volume as at 4 May 2026.
3. The cash on hand does not include any expenditure from 1 April 2026 and does not include capital raising costs.
4. Exercisable at \$0.06 per share on or before 18 August 2027.
5. 112.7m Unlisted Options on issue with various exercise prices and dates.
6. 7.9m Performance Rights on issue.

For personal use only

For personal use only

# West Desert Project

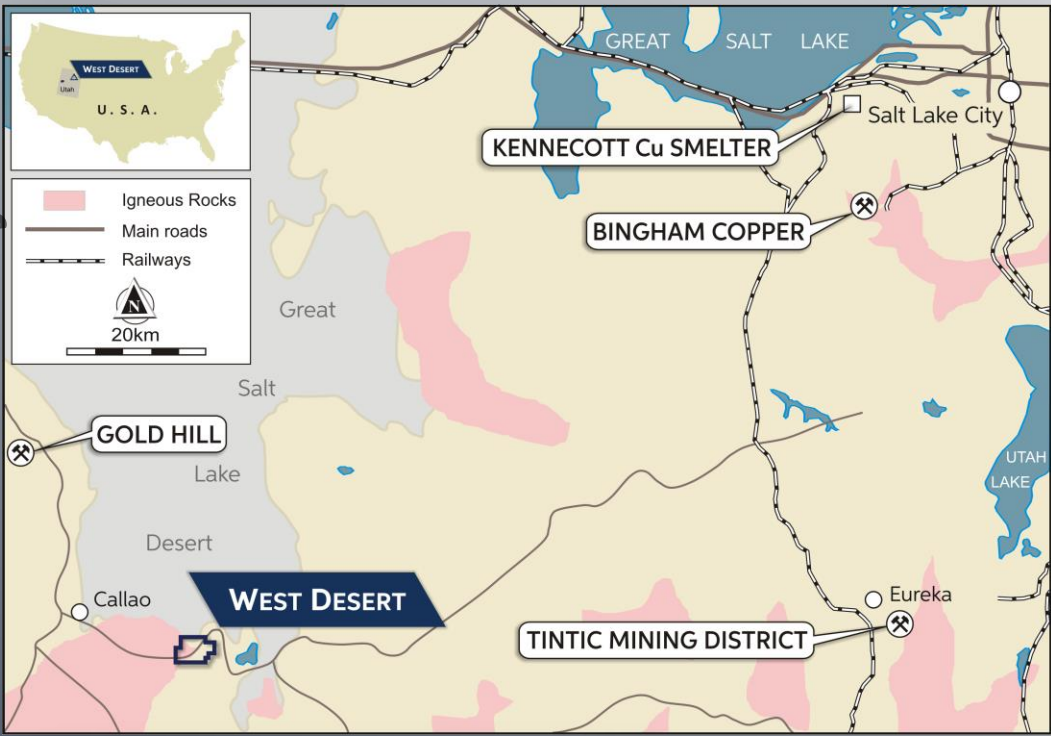
UTAH, USA

Drill core from WD26-01 from 505.87m down hole  
(see disclaimer Page 13)

SECTION 01



For personal use only



Located in a world class mining jurisdiction with excellent infrastructure



### INVESTMENT HIGHLIGHTS

## Strategic and Critical Metal Asset – with demonstrated pathway to growth

#### Existing resources on private land

Large skarn and carbonate replacement deposit (CRD) within the Seiver Orogenic Belt (host to the giant Bingham Canyon Copper Mine)

**33.7Mt @ 20g/t In, 3.83% Zn, 0.15% Cu, 9.1g/t Ag, 0.1g/t Au (Indicated and Inferred)<sup>1</sup>**

Containing 23.8Moz indium, 1.3Mt of zinc, 49Kt copper, 10Moz silver, and 119Koz gold

#### Largest undeveloped indium deposit in the US

New discovery has the potential to make it even bigger and add resources of other critical metals

#### Outstanding growth potential

New discovery in step-out drilling confirms large mineral system with only 10% of prospective horizon tested

*“West Desert presents as an outstanding, 100% owned growth project with a large existing critical metal resource base and compelling exploration potential confirmed by step-out drilling”*

# Indium

## West Desert – The Largest Known Undeveloped Indium Resource in the US

Very high-value commodity, and rising – +US850/kg

Indium is classified as a strategic and critical metal in the US

The US is a 100% importer of indium, with 70% of the worlds supply controlled by China

Indium is widely used in electronics, semiconductors and other high-tech industries, including **stealth aircraft coatings**

**The large and unique indium endowment at West Desert is without parallel in the US.** West Desert is strategically positioned to be a key player in the global indium sector and to provide the US with a secure domestic source of supply as the defence industry ramps up

## Right Time, Right Place

### US Domestic Minerals Initiative: Reshoring Supply Chains (Executive Order)

**Objective:** To secure and affordable domestic supply of critical minerals to reduce reliance on foreign sources

**Scope:** The focus on minerals essential to transportation, defence, and next-generation technologies

**West Desert Example:** Accelerate domestic mineral extraction and processing to strengthen national supply chains and support critical infrastructure projects

### Department of the Interior (DOI) Initiative: Unlocking critical minerals from mine waste from historic mines

**Objective:** To recover critical minerals from existing mine waste and abandoned mines to bolster domestic supply chains and reduce foreign dependence

**Scope:** The initiative targets mine waste and tailings from active and abandoned mines

**West Desert Example:** High-Grade Indium, tellurium, and germanium in historical stockpiles

**AW1 Opportunity: Fast-track recovery of critical metals from historical mine waste at the Utah, Emma & Galena mines (within West Desert Project area)**

## EXISTING JORC RESOURCES

# High-Grade Critical Metal Resource

**33.7Mt @ 20g/t In, 3.83% Zn, 0.15% Cu, 9.1g/t Ag, 0.1g/t Au**  
(Indicated and Inferred)<sup>1</sup>

### Which includes:

- 18.7Mt @ 13g/t In, 2.8% Zn, 0.12% Cu, 11g/t Ag, and 0.09g/t Au contained within open-pit
- 15Mt @ 28.7g/t In, 5.2% Zn, 0.18% Cu, 7g/t Ag, and 0.12g/t Au contained within underground mine plan
- Containing **23.8Moz indium, 1.3Mt of zinc, 49Kt copper, 10Moz silver, and 119Koz gold**
- Grades in drilling up to 47.6% Zn, 14.4% Cu, 12.43g/t Au and 2,974g/t Ag

### Critical metal expansion potential:

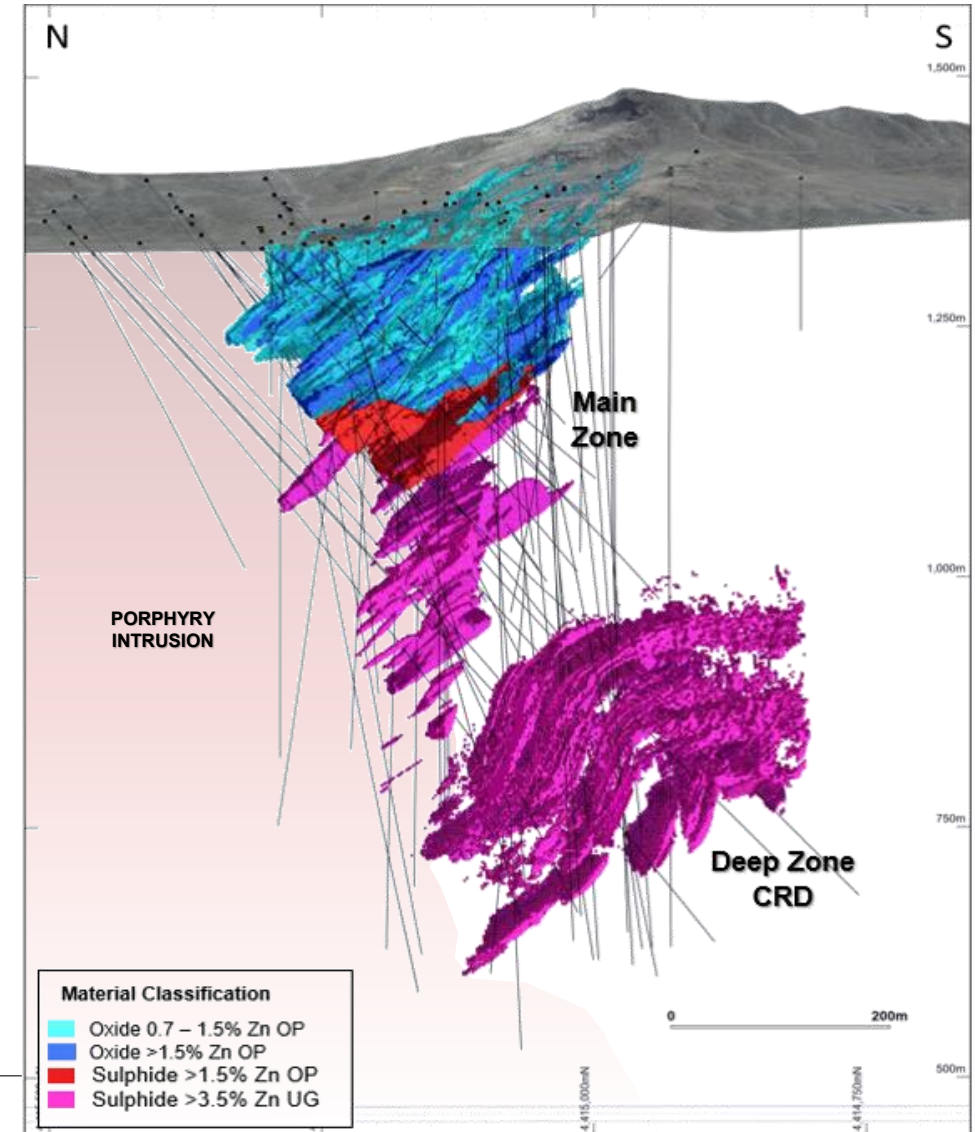
High grades of gallium, germanium, and tellurium in drilling and waste dump sampling and not included in MRE

### Private land and 100% owned:

The project covers over 330 acres including patented claims and AW1 controls the Fish Springs Mineral District

### West Desert Deposit MRE

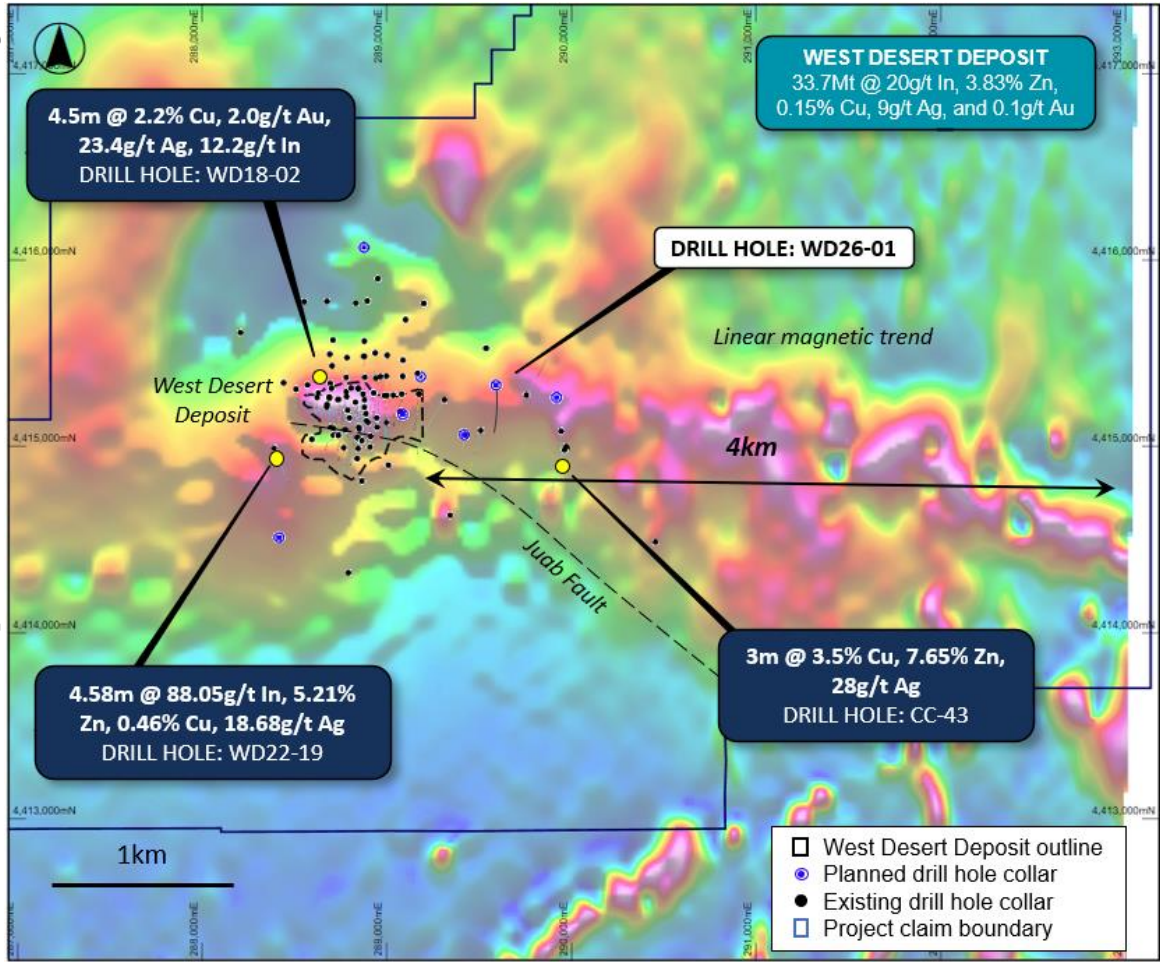
Section view of the block model showing material categories and drilling



<sup>1</sup> See the Geology and Resources on Slide 21 for details

# Geophysics Defines Multiple Targets

For personal use only



**Less than 10% of the large porphyry/skarn mineral system explored**  
- geology is analogous to Bingham Canyon and Tintic

**West Desert "lookalikes"** - multiple magnetic and gravity geophysical anomalies identified in project area and are **yet to be drilled**

**High-grade mineralised skarns discovered outside of MRE** - Skarn deposits usually form in clusters around porphyry's - much more to be found

**Limited drilling indicates outstanding growth potential** - High grade intersections include;

- 3.0m @ 3.5% Cu, 7.65% Zn, 28g/t ag (Drill hole CC-43)
- 4.58m @ 88.05g/t In, 5.21% Zn, 0.46% Cu, 18.68g/t Ag (Drill hole WD22-19)
- 4.5m @ 2.2% Cu, 2.0g/t Au, 23.4g/t Ag, 12.2g/t In (Drill hole WD18-05)

**West Desert Expansion Potential**  
Plan view of West Desert Deposit outline (black dashed), historical and planned drilling, overlaying magnetic image (1VD RTP)

# Strong Visual Zinc and Copper Sulphide Intersected

For personal use only

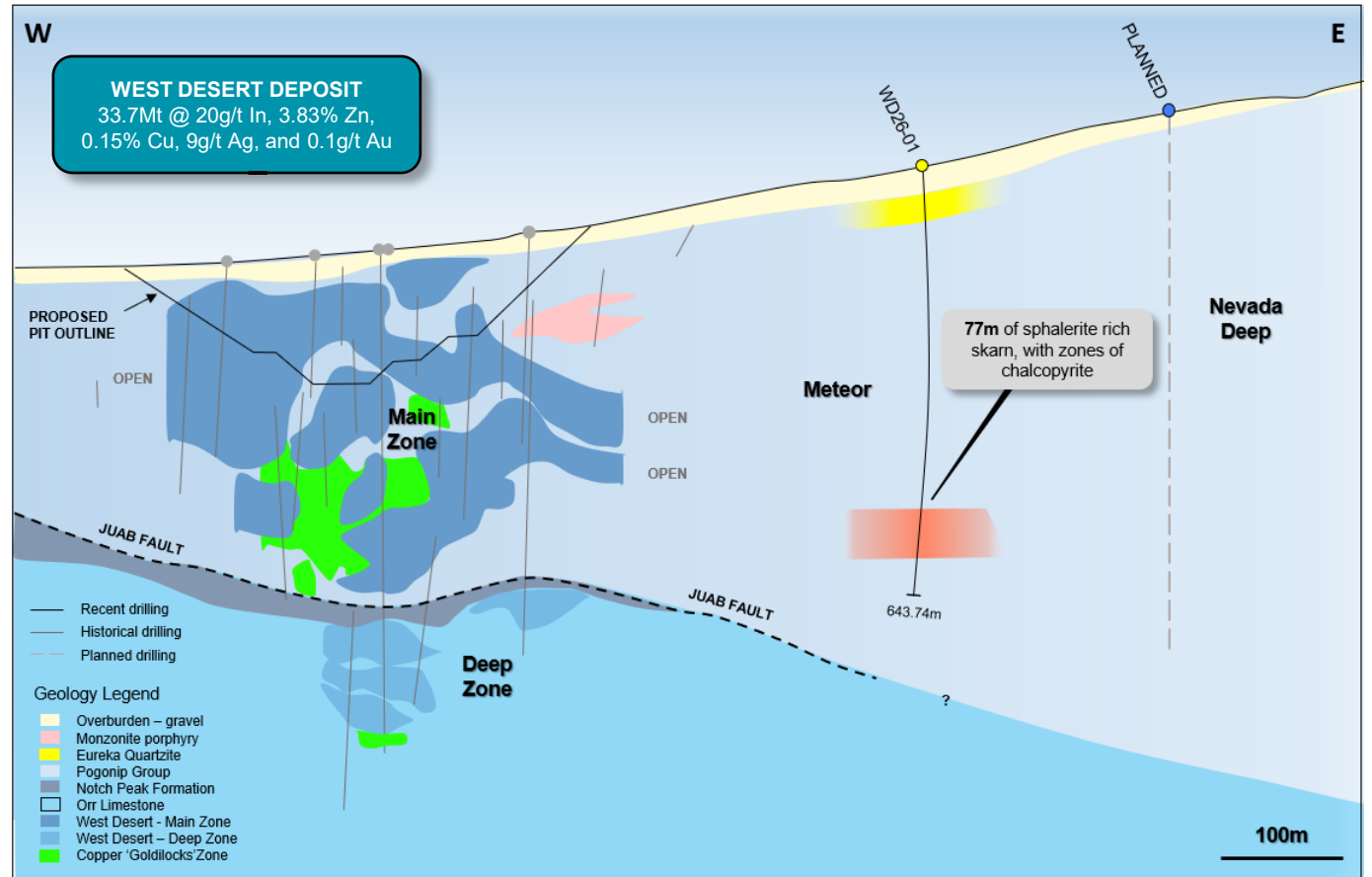
Over 77m of visual zinc and copper skarn – mineralisation looks similar to the Main Zone of the West Desert Deposit

Zinc and copper mineralisation at West Desert is associated with high levels of critical metals including, **indium, gallium, and tellurium**

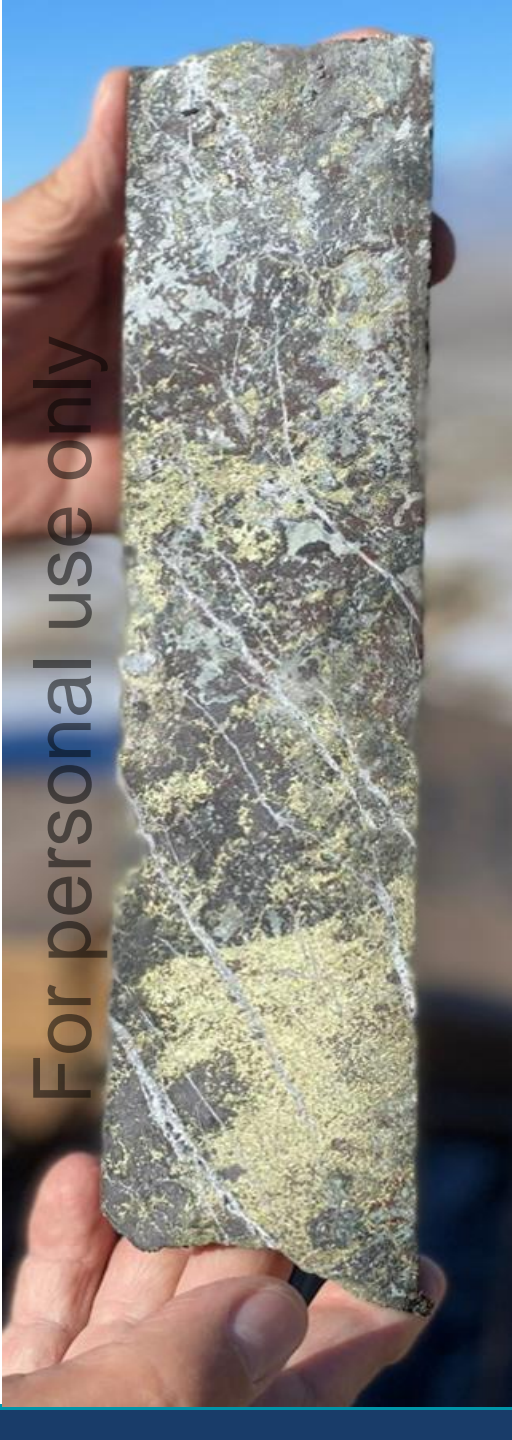
Strong alteration and enrichment in pathfinder elements indicate **significant gold potential**



Strong visual zinc-copper sulphide in drill core from WD26-01 (520m)



Schematic long section (+/- 25m) of West Desert, Meteor and Nevada Deep target areas



# Next Steps



## EXPLORATION

- Exploration drilling program currently underway focused on testing high-priority targets – **first drill hole discovers new zone of mineralisation**
- Addition of a second drill rig will expand exploration into new and untested areas



## RESOURCE EXPANSION

- Sampling program of un-assayed historical core has been completed, with results to follow shortly to build on existing resource
- The current MRE is open along strike and at depth, with drilling planned to expand these zones of mineralisation



## TRANSFORMATIONAL CHANGE

- Growth through world class exploration potential and land holding with proven resource base
- Potential to meet the US critical metal supply chain needs
- Strong catalysts for company re-rating

■ Copper and critical metal rich drill core from WD22-01c at approximately 422m downhole (3.4% Cu, 0.74g/t Au, 91.22g/t Ag, 17g/t In, 65.95g/t Ga)

For personal use only



# Storm Copper Project

NUNAVUT, CANADA

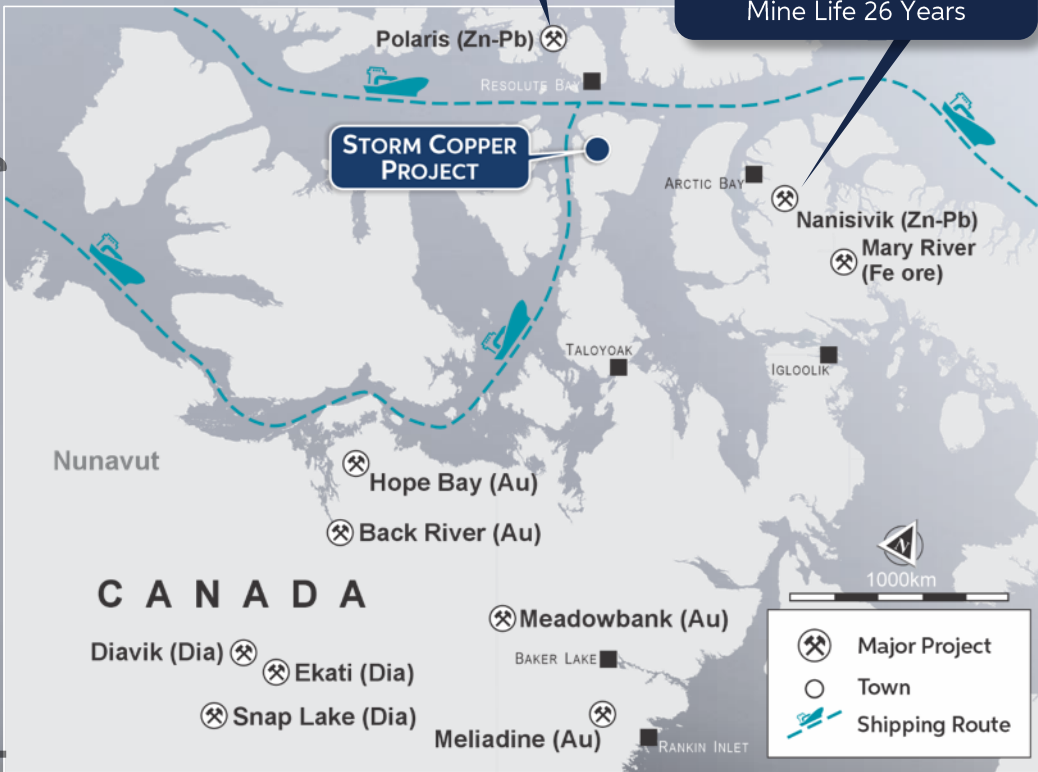
SECTION 02



For personal use only

**POLARIS MINE**  
22Mt @ 14.1% Zn, 4% Pb  
Mine life 21 Years

**NANISIVIK MINE**  
18Mt @ 9% Zn, 0.7% Pb  
Mine Life 26 Years



Located in an established mining jurisdiction with year-round operations

### INVESTMENT HIGHLIGHTS

## District-Scale Copper Opportunity – near-term open-pit producer with exploration upside

Simple, high-grade, low-cost copper operation

US\$40m funding and offtake deal de-risks execution

PEA defines initial US\$47.4m CAPEX with open-pit resources and simple ore-sorting and beneficiation process

Strategic Alliances secured with Ocean Partners and Taurus Royalty Fund

### District-scale growth potential

### Compelling valuation gap

Over 2,200sqkm land holding with copper exposed in numerous locations along the 110km strike of the belt

Market cap versus intrinsic NPV demonstrates significant upside in valuation

*“Storm presents as a compelling near-term development opportunity that can fund accelerated growth by leveraging its 100% control of a copper belt with world class endowment potential”*



# Simple, Efficient and ESG-Friendly Processing

Ore-sorting and beneficiation provides very low capital, very low risk processing solution with outstanding ESG credentials



## PEA processing production plan

includes ramp up from 850Kt to 1.25Mtpa during year 3

## ESG sensitive flowsheet

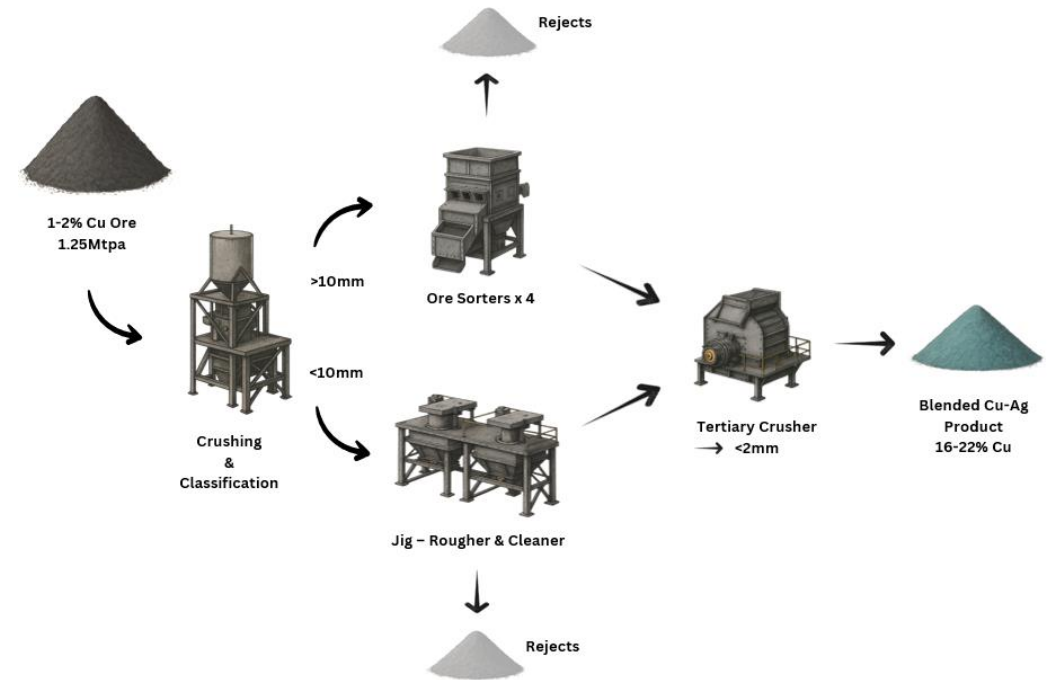
with no tailings generated and no chemicals required in the process

## Year round, simple process to produce two products

- 17-20% Cu, 35-50g/t Ag product
- 0.4-0.6% Cu lower grade stockpile (amenable to flotation)

## Proven technology

with global application in large mines



**Why it works:** The dense copper sulphide minerals (such as chalcopyrite) sit within much lighter carbonate rocks (limestone and dolomite). This clear density contrast allows XRT and dense media separation to efficiently reject waste and upgrade to a saleable copper product.



For personal use only

# Strategic Alliance provides up to US\$40m finance to develop Storm Offtake and Funding Agreement with Ocean Partners



is a global metal trading, technical advisory, and financing company, built on successful operations, currently including;



Development of the Galmoy zinc-lead-silver **200,000tpa ore-sorting operation in Ireland**, with products to be exported to Europe



Agent for **10-15% Cu DSO ores** from a 200,000tpa Sub-Saharan African copper-gold project



Blending **0.5 – 1Mtpa of copper and precious metals** at its flagship Taiwan blending facility, and at other locations globally



**Major financing facility** for the acquisition and expansion of one of the largest, privately owned, silver mines in the world



## ALLIANCE AND DEAL STRUCTURE:

### Private Placement

Ocean Partners acquired US\$2m equity in AW1 in 2025

### Project Financing

Ocean Partners to provide up to 80% of initial project CAPEX (Based on an approximate US\$50m CAPEX)

### Offtake

AW1 to provide 100% offtake on copper and silver products as forecast under the PEA

*"Our shared goal is the timely success of the Project and we look forward to working closely with the American West team as they continue to make significant advances through process innovation and resource growth. "*

*Brent Omland, CEO, Ocean Partners*

# Genuine and Rare District Scale Opportunity

**Regional scale copper belt – long life project**

## COPPER BELT

>110km

long prospective copper horizon with only 5% explored with drilling

## STORM COPPER

28.2Mt @ 1% Cu, 3.3g/t Ag<sup>1</sup>

foundation for a low-cost, open-pit copper starter mine to generate cashflow for accelerated exploration

## SEAL ZINC-SILVER

Distance from Storm: ~25km

Inferred resource of **1Mt @ 10.2% Zn, 46.5g/t Ag** with exceptional mineralisation, which remains open at depth and along strike. Has belt scale exploration potential



## TORNADO / BLIZZARD

Distance from Storm: ~10km

Extensive geophysical and copper anomalies along the SE extension of the Storm Graben. Ground geophysical surveys have highlighted EM anomalies at depth

## CHEVRON

Distance from Storm: ~35km

>4km, strong Cu anomaly with similar orientation and geochemical signature to Storm

## TEMPEST

Distance from Storm: ~40km

EM and field mapping has now extended the strike of the Tempest gossan to over 4km. Rock sampling has returned >30% Cu

## Cautionary Statement

The Seal Zinc Deposit MRE is historical and foreign in nature and is reported in accordance with Canadian NI 43-101 Standards and not in accordance with the 2012 JORC Code. See the Prospectus dated 21 October 2021 for more information.

<sup>1</sup> See slide 21 for MRE details.

For personal use only



# Appendix



For personal use only

# Geology and Resources



American West Metals  
total copper resource

**325,253 tonnes**

In addition to large quantities of zinc, silver, indium, gold and lead

## STORM

Sediment hosted, stratabound copper sulphide deposit

Deposit	Category	Mt	Cu (%)	Ag (g/t)	Cu (Tonnes)	Ag (Ounces)
Cyclone	Indicated	12.4	1.10	3.82	136,500	1,527,000
	Inferred	4.5	0.95	3.94	43,300	575,000
Chinook	Indicated	1.0	1.62	3.82	16,900	127,800
	Inferred	0.7	0.56	2.63	4,000	59,600
Corona	Indicated	1.2	0.91	2.85	11,200	112,100
Corona	Inferred	1.4	0.65	2.00	8,900	87,500
Thunder	Indicated	1.3	1.22	1.83	15,300	73,600
Thunder	Inferred	1.5	0.58	1.24	8,600	60,000
Cirrus	Inferred	2.7	0.63	1.43	16,700	122,300
LR	Inferred	0.8	0.73	4.11	5,900	107,400
Gap	Inferred	0.7	1.26	4.99	8,800	112,600
<b>IND Total</b>	<b>Indicated</b>	<b>15.9</b>	<b>1.13</b>	<b>3.59</b>	<b>179,900</b>	<b>1,840,500</b>
<b>INF Total</b>	<b>Inferred</b>	<b>12.3</b>	<b>0.78</b>	<b>2.85</b>	<b>96,300</b>	<b>1,124,500</b>
<b>Total</b>		<b>28.2</b>	<b>0.98</b>	<b>3.27</b>	<b>276,100</b>	<b>2,965,100</b>

Storm Copper Project resource estimate at 0.25% Cu cut-off grade (Mt = million tonnes)

## WEST DESERT

Large Zinc-Copper-Silver-Indium-gold skarn and carbonate replacement deposit (CRD)

Category	Mt	Zn (%)	Cu (%)	Ag (g/t)	Zn (Tonnes)	Cu (Tonnes)	Ag (Ounces)
Indicated	27.4	3.79	0.14	9.53	1,037,278	40,588	8,376,494
Inferred	6.3	4.01	0.13	7.13	253,626	8,465	1,440,285
<b>Total</b>	<b>33.7</b>	<b>3.83</b>	<b>0.15</b>	<b>9.08</b>	<b>1,290,904</b>	<b>49,053</b>	<b>9,816,779</b>

West Desert resource estimated using a 3.5% Zn equivalent cut-off grade (Mt = million tonnes)

Category	Mt	In (g/t)	Au (g/t)	In (Ounces)	Au (Ounces)
Inferred	33.7	20.01	0.10	23,763,978	118,761
<b>Total</b>	<b>33.7</b>	<b>20.01</b>	<b>0.10</b>	<b>23,763,978</b>	<b>118,761</b>

West Desert resource estimated using a 3.5% Zn equivalent cut-off grade (Mt = million tonnes)

STORM

# Geological Model

Large sediment-hosted copper sulphide system

## Widespread Surface Copper

Multiple near surface high-grade copper deposits identified across 15km<sup>2</sup>

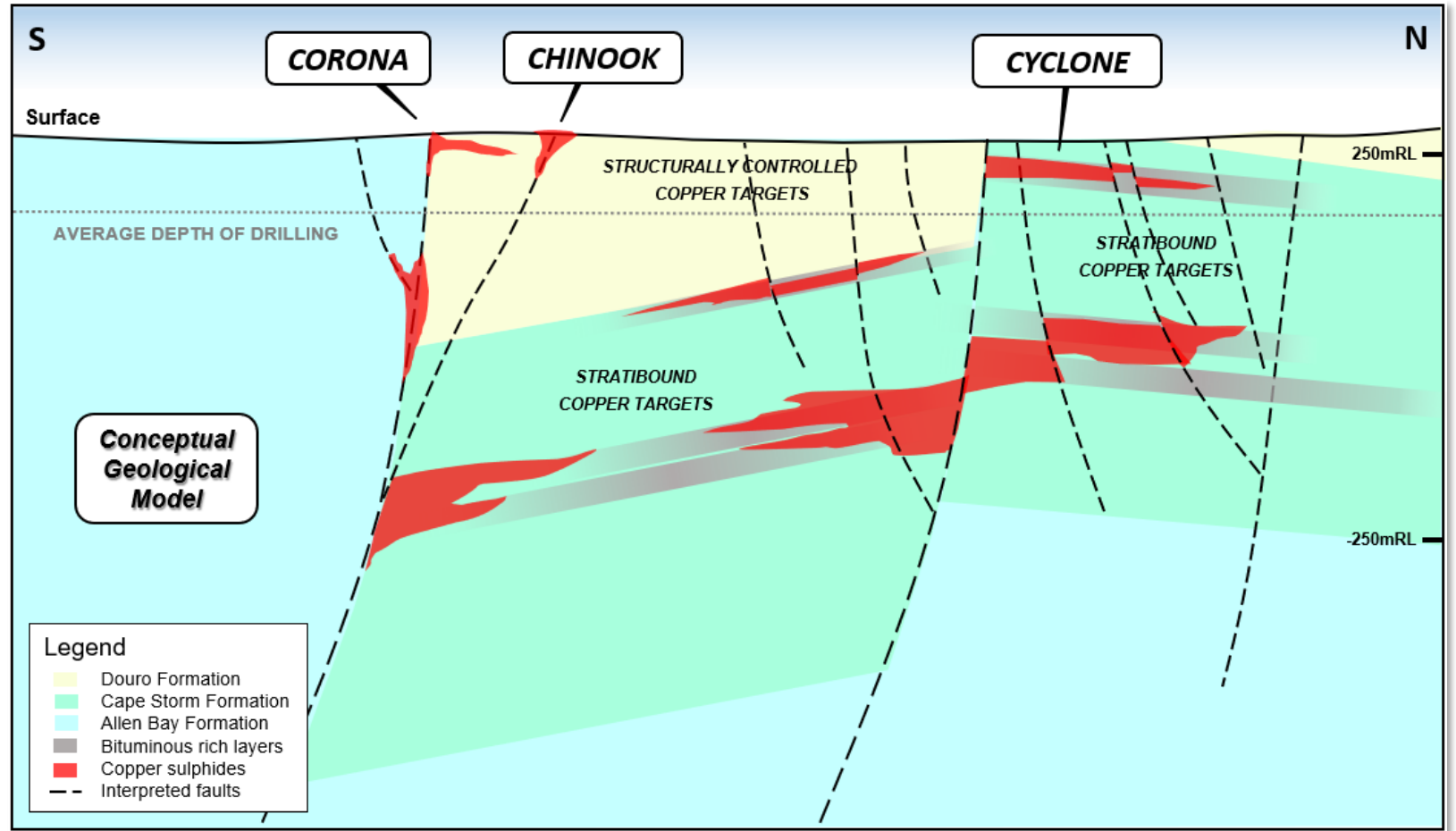
## Deep Sulphide Discovery

High-grade copper sulphides up to 3.7% Cu discovered at depth



## Outstanding growth

with multiple geophysical anomalies remaining untested



**Evidence of a major copper system**  
Schematic exploration concept of the Storm area.

For personal use only

# Geological Model

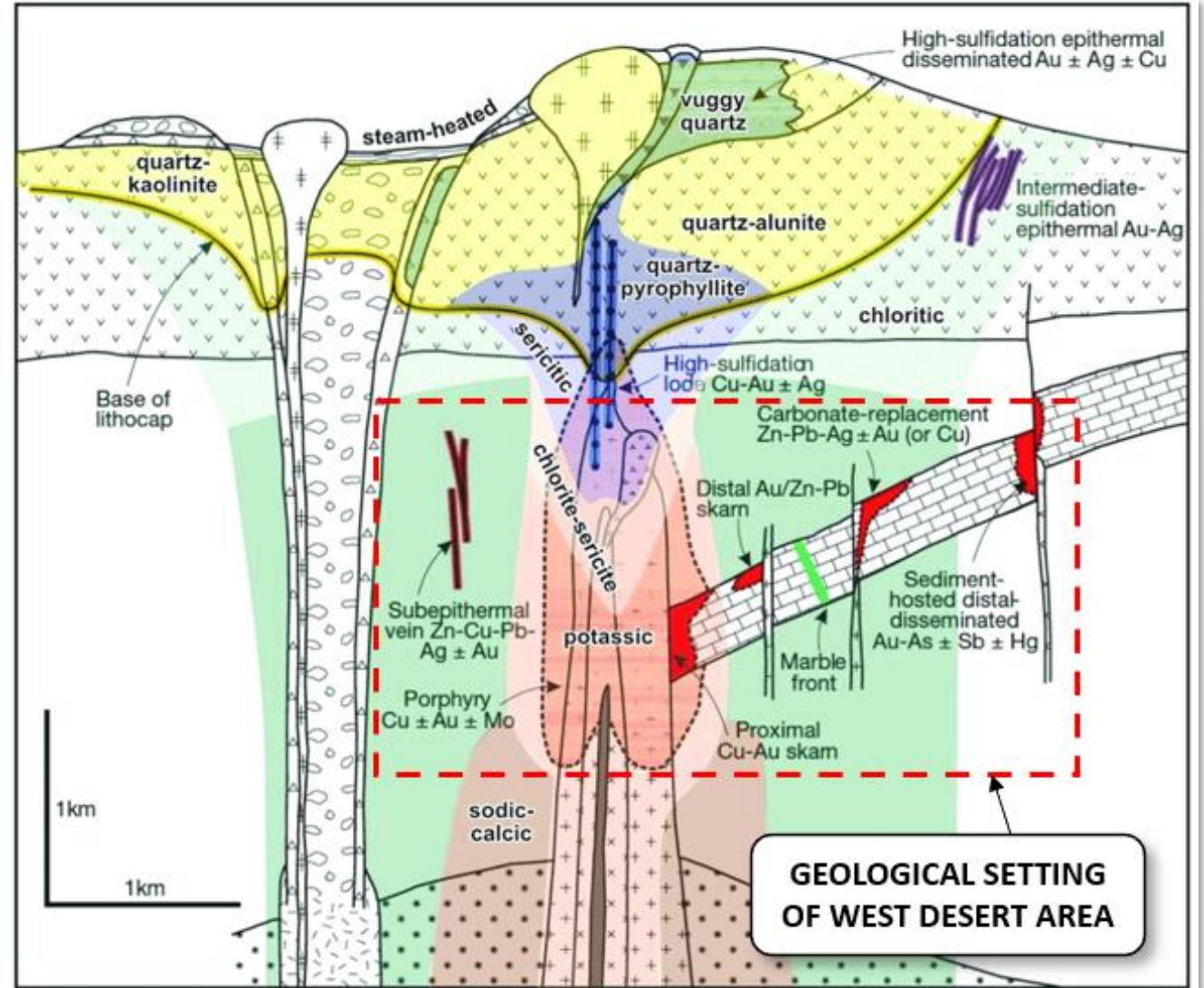
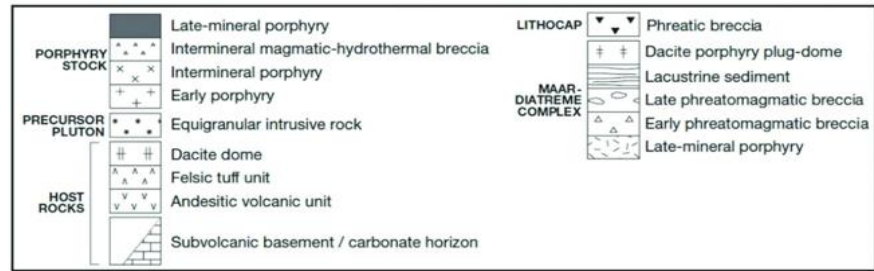
## Large Porphyry-Skarn Mineral System

### Multiple Deposit Types in District

- High-grade Zn+Cu+In+Au+Ag skarns
- Zn+Pb+Ag replacement vein systems (mined circa 1900)
- Mo+Cu+Au porphyry
- High-grade Mo vein system at depth (>4% Mo)
- Skarn and APEX MINE style Ga potential

### Critical Metal Growth

Currently the largest indium deposit in the US with further growth potential, and with high-grade Ga confirmed with drilling



**GEOLOGICAL SETTING OF WEST DESERT AREA**

Porphyry Copper System Geological Model – Sillitoe 2010

For personal use only

# Competent Persons Statement

## Competent Person's Statement Mine Engineering

The Information in this Report that relates to the Preliminary Economic Analysis is based on information compiled by Jim Moore, who is a qualified mining engineer and a Chartered Professional member of the Australian Institute of Mining and Metallurgy. Mr Moore has sufficient experience that is relevant to the style of mineralisation and type of deposit under consideration and to the activity being undertaken to qualify as a Competent Person as defined in the 2012 Edition of the 'Australasian Code for Reporting of Exploration Results, Mineral Resources and Ore Reserves'.

The Company confirms that it is not aware of any new information or data that materially affects the results included in the original market announcements referred to in this Announcement and that no material change in the results has occurred. The Company confirms that the form and context in which the Competent Persons' findings are presented have not been materially modified from the original market announcement.

## Competent Person's Statement Storm JORC MRE

The information in this announcement that relates to the estimate of Mineral Resources for the Storm Project is based upon, and fairly represents, information and supporting documentation compiled and reviewed by Mr. Kevin Hon, P.Geo., Senior Geologist, Mr. Christopher Livingstone, P.Geo., Senior Geologist, Mr. Warren Black, P.Geo., Senior Geologist and Geostatistician, and Mr. Steve Nicholls, MAIG, Senior Resource Geologist, all employees of APEX Geoscience Ltd. and Competent Persons. Mr. Hon and Mr. Black are members of the Association of Professional Engineers and Geoscientists of Alberta (APEGA), Mr. Livingstone is a member of the Association of Professional Engineers and Geoscientist of British Columbia (EGBC), and Mr. Nicholls is a Member of the Australian Institute of Geologists (AIG).

Mr. Hon, Mr. Livingstone, Mr. Black, and Mr. Nicholls (the "APEX CPs") are Senior Consultants at APEX Geoscience Ltd., an independent consultancy engaged by American West Metals Limited for the Mineral Resource Estimate for the Storm Project. The APEX CPs have sufficient experience that is relevant to the style of mineralisation and type of deposit under consideration and to the activity being undertaken to qualify as a Competent Person as defined in the 2012 edition of the "Australasian Code for Reporting of Exploration Results, Mineral Resources and Ore Reserves".

The Company confirms that it is not aware of any new information or data that materially affects the results included in the original market announcement referred to in this announcement and that no material change in the results has occurred. All material assumptions and technical parameters under the Mineral Resource estimates in the original market announcement continue to apply and have not materially changed. The Company confirms that the form and context in which the Competent Person's findings are presented have not been materially modified from the original market announcement.

## Competent Person Statement JORC MRE for West Desert

The information in this announcement that relates to the estimate of Mineral Resources for the West Desert Deposit is based upon, and fairly represents, information and supporting documentation compiled by Mr Allan Schappert, a Competent Person, who is a Member of the American Institute of Professional Geologists (AIPG). Mr Schappert is a Principal Consultant at Stantec and an independent consultant engaged by American West Metals Limited for the Mineral Resource Estimate and has sufficient experience that is relevant to the style of mineralisation and type of deposit under consideration and to the activity being undertaken to qualify as a Competent Person as defined in the 2012 edition of the "Australasian Code for Reporting of Exploration Results, Mineral Resources and Ore Reserves" (the JORC Code).

The Company confirms that it is not aware of any new information or data that materially affects the results included in the original market announcement referred to in this announcement and that no material change in the results has occurred. All material assumptions and technical parameters under the Mineral Resource estimates in the original market announcement continue to apply and have not materially changed. The Company confirms that the form and context in which the Competent Person's findings are presented have not been materially modified from the original market announcement.

## Competent Person Statement Previously Released Exploration Results

The information in this report that relates to Exploration Results for the Storm Copper and Seal Zinc-Silver Projects is based on information compiled by Mr Dave O'Neill, a Competent Person who is a Member of The Australasian Institute of Mining and Metallurgy. Mr O'Neill is employed by American West Metals Limited as Managing Director, and is a substantial shareholder in the Company. Mr O'Neill has sufficient experience that is relevant to the style of mineralisation and type of deposit under consideration and to the activity being undertaken to qualify as a Competent Person as defined in the 2012 Edition of the 'Australasian Code for Reporting of Exploration Results, Mineral Resources and Ore Reserves'.

The Company confirms that it is not aware of any new information or data that materially affects the results included in the original market announcements referred to in this Announcement and that no material change in the results has occurred. The Company confirms that the form and context in which the Competent Persons' findings are presented have not been materially modified from the original market announcement.

# Competent Persons Statement

This Presentation contains information extracted from the following reports which are available on the Company's website at

<https://www.americanwestmetals.com/site/content/>

2022	→ 2023	→ 2024	→ 2025/2026
<b>26 April</b>	Assays Confirm High Grades at West Desert	<b>24 January</b>	Storm Exploration Set to Accelerate
<b>4 May</b>	Drilling Continues to Deliver at West Desert	<b>9 February</b>	Maiden JORC MRE for West Desert
<b>23 May</b>	High Grades Confirmed Near Surface at West Desert	<b>1 May</b>	Storm Copper Drilling Update
<b>25 May</b>	New Mineralised Zone Discovered at West Desert	<b>23 May</b>	Assays Confirm Thick Intervals of Copper at Storm
<b>8 June</b>	Exceptional Drill Hole Results at West Desert	<b>13 June</b>	Breakthrough Gravity Results at Storm
<b>12 July</b>	Further Strong Assay Results for West Desert	<b>22 June</b>	8% Copper Intersected in Drilling at Storm
<b>25 July</b>	Thick Intervals of Copper in First Drill Holes at Storm	<b>5 July</b>	High Grade Copper Results Continue at Storm
<b>8 August</b>	Extensive Shallow Copper Intersected in Canada	<b>2 August</b>	Major Copper Discovery Confirmed at Storm
<b>23 August</b>	Major Copper Discovery at Storm	<b>7 August</b>	Two Exceptional New Copper Discoveries at Storm
<b>8 September</b>	Outstanding Drilling Results Continue at Storm	<b>4 September</b>	Bonanza Copper Hits and New Discovery at Storm
<b>19 October</b>	Excellent Metallurgical Results at West Desert	<b>13 December</b>	23.8 Million Ounces of Indium Defined at West Desert
<b>3 November</b>	High-Grade Copper Hits Continue at Storm		
<b>22 November</b>	New Copper Targets at Copper Warrior		
		<b>30 January</b>	Maiden JORC MRE for Storm
		<b>26 February</b>	Resource and Exploration Activities Set for Storm
		<b>22 April</b>	Exploration Underway at the Storm Copper Project
		<b>7 May</b>	Storm Exploration Update
		<b>21 May</b>	Thick New Copper Zones Defined at Storm
		<b>1 July</b>	Drilling Hits 7% Copper as Summer Season Starts
		<b>10 July</b>	Thick Copper Hits as Drilling Accelerates at Storm
		<b>24 July</b>	Thunder High-Grade Copper Zone Extended
		<b>13 August</b>	Storm Copper DSO Potential Confirmed
		<b>15 August</b>	Assays Confirm Further High-Grade Copper at Storm
		<b>22 August</b>	Deep Drilling Hits More Copper at Storm
		<b>3 September</b>	13% Cu in Assays and a New Discovery at Storm
		<b>20 September</b>	Thick and High-Grade Copper in Deep Drilling
		<b>27 September</b>	Drilling hits 22.9m @ 8.5% Cu at Storm
		<b>17 October</b>	Thick Copper from Surface at Chinook
		<b>16 December</b>	Significant Growth of Storm MRE
		<b>29 April</b>	Thick Visual Zinc and Copper at West Desert
		<b>9 April</b>	High Grades of Critical Metals at West Desert
		<b>21 January</b>	Storm Copper MRE Continues to Grow
		<b>18 December</b>	Multiple Indium and Gallium targets at West Desert
		<b>17 November</b>	4km Long Copper Anomaly Discovered at Storm
		<b>7 August</b>	Assays Confirm High-Grade Copper at Storm
		<b>23 July</b>	Extensive Copper Defined by Regional Exploration
		<b>17 July</b>	Storm Copper Offtake Deal Finalised
		<b>10 July</b>	Large Scale Copper Potential Reaffirmed
		<b>3 March</b>	Storm Copper Project Preliminary Economic Study

# AMERICAN WEST METALS LIMITED

**DAVE O'NEILL**  
Managing Director

**DANNIKA WARBURTON**  
Investor & Media Relations

☎ +61 457 598 993

☎ +61 401 094 261

✉ [doneill@aw1group.com](mailto:doneill@aw1group.com)

✉ [dannika@investability.com.au](mailto:dannika@investability.com.au)

For personal use only