

30th April 2026

Drilling Complete at Beachcomber - Forelands Gold Project, WA

BPM Minerals Ltd (ASX: BPM) ('BPM' or 'the Company') is pleased to advise that RC drilling is now complete at the high-grade Beachcomber Prospect, part of the **Forelands Gold Project** (the "Project") in Western Australia.

Highlights - Beachcomber:

- **7,426m, 46-hole RC drill program completed at the Beachcomber Prospect.**
- **Drilling targeted several exciting high-grade targets from the broader Beachcomber Prospect area, including:**
 - **Main Beachcomber Lode - Testing the down dip extensions of the high-grade gold bearing quartz vein (Figure 1), key intercepts include^{1,5}:**
 - 3m @ 65.8 g/t Au from 25m (ZSAC0087)
 - 9m @ 7.77 g/t Au from 75m, incl. 2m @ 21.73 g/t Au from 75m and 1m @ 23.39g/t Au from 83m. (FLRC007)
 - 6m @ 6.72 g/t Au from 28m and 2m @ 20.77 g/t Au from 40m. (FLRC010)
 - 2m @ 12.33 g/t Au from 134m and 5m @ 2.22 g/t Au from 105m. (FLRC020)
 - 3m @ 13.5 g/t Au from 90m. (BCR008)
 - 9.7m @ 4.5 g/t Au from 88.8m, including 0.5m @ 66.5 g/t Au from 89.3m. (BCD001)
 - **Beachcomber North-West - An untested 700m long, coherent 100ppb Au soil anomaly⁶.**
 - **Beachcomber Central and Beachcomber Fault - Untested, coherent 100ppb Au soil anomalies (Figure 2).**
- **Assay results anticipated to be reported to the ASX in late May/early June.**
- **Recent award of co-funded drilling grant via the WA governments Exploration Incentive Scheme (EIS) for further exploration drilling at Beachcomber in the second half of 2026.**

Commenting on the progress, BPM CEO Oliver Judd:

"We're delighted to have completed this drill program on schedule and on budget despite challenges across the state with diesel shortages and cyclones. Observations from the drilling are very encouraging and the technical team are confident mineralisation has been intersected at the various Beachcomber targets we've been testing over the past month.

We now have over 7,000m worth of samples in the laboratory and we're looking forward to receiving the assays over the coming weeks with leading to extensions to known mineralisation and new discoveries."

For personal use only

For personal use only

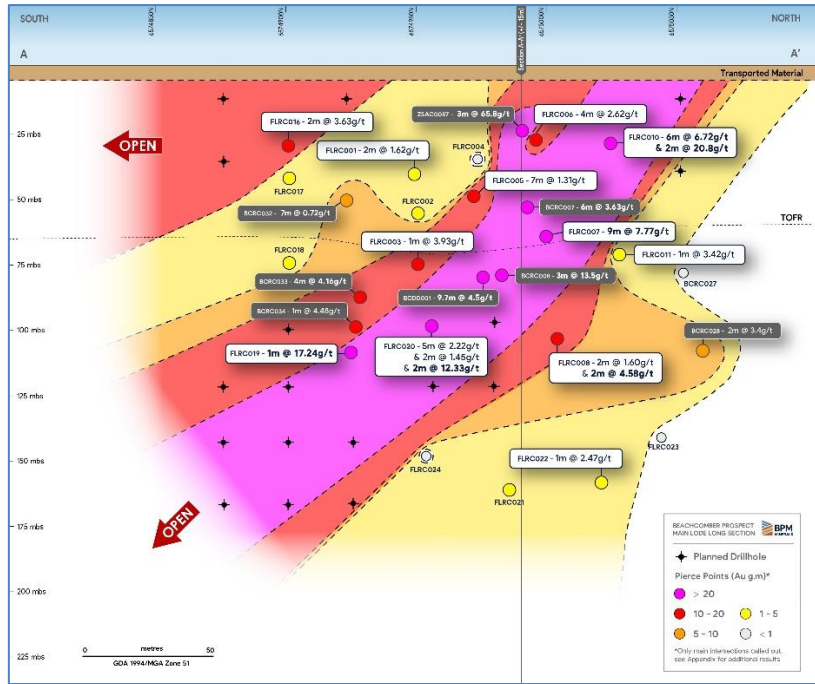


Figure 1 - Beachcomber Long Section with defined high-grade, south-plunging shoot with planned RC drill holes

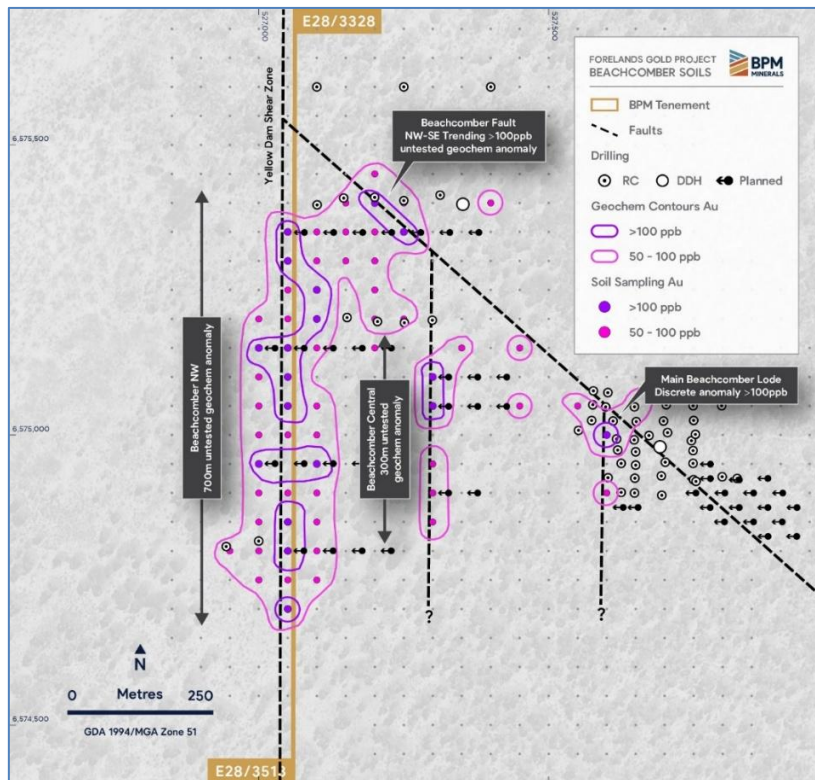


Figure 2 - Beachcomber Soil Anomalies with planned RC drill traverses

Durack REE-Ti-Zr Project (WA)

The company has recently decided to withdraw from the 'option to acquire' agreement over the Durack REE-Ti-Zr Project located in the Eastern Kimberley region of Western Australia (Tenements E80/5944, E80/5945 & E80/6057). This decision will allow the company to fully focus its resources on its flagship Forelands Gold Project located in the Eastern Goldfields of Western Australia.

Forelands Gold Project Overview

District-scale position: ~630 km² consolidated landholding along the Yilgarn Craton-Albany Fraser Orogen margin, an analogous tectonic setting to the +8 Moz Tropicana gold deposit.

Strategic location: ~150 km east of Kalgoorlie, straddling the Trans-Access Road with excellent access and proximity to multiple operating and proposed mills.

High-grade intercepts at Beachcomber:

- 3m @ 65.8 g/t Au from 25m (ZSAC0087)
- 9m @ 7.77 g/t Au from 75m, incl. 2m @ 21.73 g/t Au from 75m and 1m @ 23.39g/t Au from 83m. (FLRC007)
- 6m @ 6.72 g/t Au from 28m and 2m @ 20.77 g/t Au from 40m. (FLRC010)
- 9.7m @ 4.5 g/t Au from 88.8m incl. 0.5m @ 66.5 g/t Au (inc. visible gold) (BCD001)
- 3m @ 13.5 g/t Au from 90m (BCRC008)
- 2m @ 12.33 g/t Au from 134m and 5m @ 2.22 g/t Au from 105m (FLRC020)
- 1m @ 17.24 g/t Au from 131m. (FLRC019)

Near-term drilling: Beachcomber overlies granted tenure, with potential for rapid conversion to a maiden JORC-compliant resource and mining opportunity.

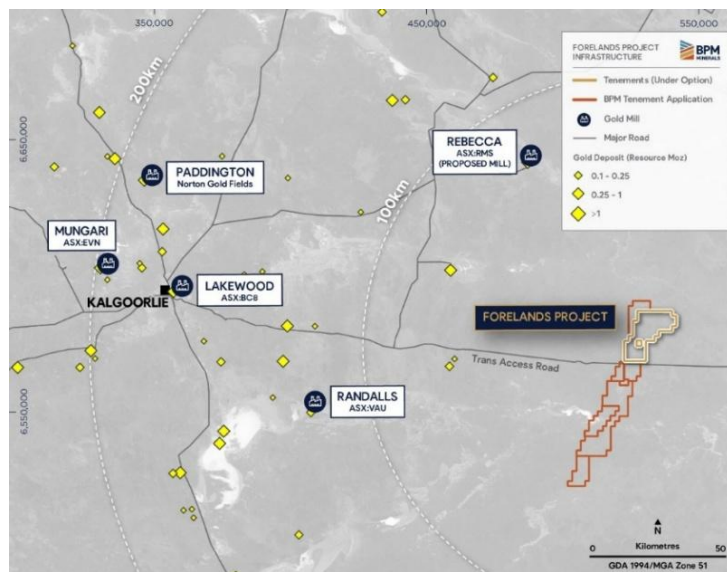
Footprint of a major gold system: Over 75 km of key mineralised 'Yellow Dam' structure; with a strong pipeline of exploration targets for testing including:

- **Ambrosia** - 8m @ 1.15 g/t Au
- **Sidecar** - 10m @ 1.0 g/t Au
- **Brass Monkey** - 6m @ 0.56 g/t Au
- **Beachcomber NW** - 42m @ 0.38 g/t Au
- **Bonnie & Clyde** - untested soil anomaly ~ 6km strike, coherent 100ppb core with values >1 g/t Au
- Dr. Barry Murphy's structural targets
- >40 historic drill holes with >1g/t
- Numerous geochem and structural targets requiring further exploration

Strong technical foundations: Project Vendors, and 2023 AMEC Prospector of the Year recipients for the Yin REE discover are Dr. Ross Chandler and Luke Blais. In addition to existing consulting geologist Dr. Barry Murphy (ASX: PDI, DES, NYSE:AEM) all with a strong track record of discoveries.

Heritage & approvals: Heritage Agreement has been executed, with a PoW approved by DMPE for drilling at Beachcomber with Bonnie & Clyde Drilling expected Q3 2026.

Commercialisation potential: Proximity to multiple existing and proposed mills within 200 km radius provides optionality for toll treatment of future resources.



Forelands Project Location with relevant gold operations and deposits

For personal use only

For further information contact:**Oliver Judd**

CEO

E: oj@bpmminerals.com

P: +61 402 811 867

- END -

This release is authorised by the Board of Directors of BPM Minerals Limited.

Upcoming and Previous Activity Key Dates

- Recommencement of exploration activities at Forelands - Early March 2026 ✓
- Phase 2 RC Drilling at Beachcomber - Late March 2026 ✓
- Bonnie & Clyde Heritage Surveys - Early April 2026 ✓
- Phase 2 Drilling Completion at Beachcomber - April 2026 ✓
- Assay results from phase 2 RC drilling at Beachcomber and Bonnie & Clyde soil sampling - May/June 2026
- Bonnie & Clyde maiden RC drilling - Q3 2026

Key ASX Announcements

1. *BPM ASX Announcement - Acquisition of High-Grade Forelands Gold Project (WA) (7th July 2025)*
2. *BPM ASX Announcement - Heritage Agreement Executed at Forelands Gold Project (15th September 2025)*
3. *BPM ASX Announcement - Exploration Update - Forelands Gold Project - WA (20th October 2025)*
4. *BPM ASX Announcement - Exploration Review Highlights Gold Footprint of Forelands (17th November 2025)*
5. *BPM ASX Announcement - High-Grade gold intersected at Beachcomber (23rd January 2026)*
6. *BPM ASX Announcement - Soil Sampling defines multiple drill targets at Beachcomber (4th February 2026)*
7. *BPM ASX Announcement - Key Bonnie & Clyde Tenement Granted (11th February 2026)*
8. *BPM ASX Announcement - Beachcomber Drilling Underway (26th March 2026)*

Competent Persons Statement

The information in this announcement that relates to Exploration Results is based on information compiled by Oliver Judd, who is a Member of AusIMM and who has more than five years' experience in the field of activity being reported on. Mr Judd is an employee of the Company. The information in the market announcement is an accurate representation of the available data.

Mr. Judd has sufficient experience which is relevant to the style of mineralisation and type of deposit under consideration and to the activity which he is undertaking to qualify as a Competent Person as defined in the 2012 Edition of the 'Australasian Code for Reporting of Exploration Results, Mineral Resources and Ore Reserves'. Mr. Judd consents to the inclusion in the report of the matters based on his information in the form and context in which it appears.

The Company confirms that it is not aware of any new information or data that materially affects the information included in prior market announcements and, in the case of exploration results, that all material assumptions and technical parameters underpinning the results in the relevant market announcement continue to apply and have not materially changed. The Company confirms that the form and context in which the Competent Person's findings are presented have not been materially modified from the original market announcement.

About BPM Minerals

BPM Minerals Limited (ASX:BPM) is a Perth-based precious and critical mineral explorer with a portfolio of projects located across Western Australia. The Company seeks to build its landholdings within Tier-1 mining jurisdictions. The company is currently focussed upon its newly acquired Forelands Project, an underexplored, high-grade gold system situated along a major structural corridor on the Yilgarn-Albany Fraser margin.

The management and exploration teams are well supported by an experienced Board of Directors who have a strong record of funding and undertaking exploration activities which have resulted in the discovery of globally significant deposits both locally and internationally.

For personal use only