

emyria

ASX : EMD

Delivering the new paradigm in mental health care

Ignite Investment
Summit Singapore

April 2026



For personal use only

Disclaimer

This presentation has been prepared by Emyria Limited ACN 625 085 734 (Company or Emyria). This presentation is not a financial product or investment advice or recommendation, offer or invitation by any person or to any person to sell or purchase securities in Emyria in any jurisdiction. This presentation contains general information only and does not consider the investment objectives, financial situation and needs of individual investors. Investors should make their own independent assessment of the information in this presentation and obtain their own independent advice from a qualified financial adviser having regard to their personal objectives, financial situation and needs before taking any action. No representation or warranty, express or implied, is made as to the accuracy, completeness, reliability or adequacy of any statements, estimates, opinions or other information, or the reasonableness of any assumption or other statement, contained in this presentation. Nor is any representation or warranty (express or implied) given as to the accuracy, completeness, likelihood of achievement or reasonableness of any forecasts, prospective statements or returns contained in this presentation. Such forecasts, prospective statements or returns are by their nature subject to significant uncertainties and contingencies, many of which are outside the control of Emyria. To the maximum extent permitted by law, Emyria and its related bodies corporate, directors, officers, employees, advisers and agents disclaim all liability and responsibility (including without limitation any liability arising from fault or negligence) for any direct or indirect loss or damage which may arise or be suffered through use or reliance on anything contained in, or omitted from, this presentation. An investment in Emyria securities should be considered speculative and is subject to investment and other known and unknown risks, some of which are beyond the control of Emyria. Emyria does not guarantee any rate of return or the absolute or relative investment performance of Emyria securities. The distribution of this presentation including in jurisdictions outside Australia, may be restricted by law. Any person who receives this presentation must seek advice on and observe any such restrictions.

This release may contain certain forward-looking statements with respect to matters including but not limited to the financial condition, results of operations and business of Emyria and certain of the plans and objectives of Emyria with respect to these items. These forward-looking statements are not historical facts but rather are based on Emyria's current expectations, estimates and projections about the industry in which Emyria operates, and its beliefs and assumptions. Words such as "anticipates," "expects," "intends," "plans," "believes," "seeks," "estimates," "guidance" and similar expressions are intended to identify forward looking statements and should be considered an at-risk statement. Such statements are subject to certain risks and uncertainties, particularly those risks or uncertainties inherent in the process of developing technology and in the endeavour of building a business around such products and services. These statements are not guarantees of future performance and are subject to known and unknown risks, uncertainties and other factors, some of which are beyond the control of Emyria, are difficult to predict and could cause actual results to differ materially from those expressed or forecasted in the forward looking statements. Emyria cautions shareholders and prospective shareholders not to place undue reliance on these forward-looking statements, which reflect the view of Emyria only as of the date of this release. The forward-looking statements made in this announcement relate only to events as of the date on which the statements are made. Emyria will not undertake any obligation to release publicly any revisions or updates to these forward-looking statements to reflect events, circumstances or unanticipated events occurring after the date of this announcement except as required by law or by any appropriate regulatory authority.

All medicines carry risks and specialist prescribers, such as registered psychiatrists, are best placed to assess the suitability of a new medication against a patient's individual circumstances and medical history before proceeding. Adverse effects of MDMA include high blood pressure, increased pulse rate, faintness, and panic attacks, and in some rare cases it can cause loss of consciousness or trigger seizures. Other side effects include involuntary jaw clenching, decreased appetite, restless legs, nausea, headache, sweating and muscle/joint stiffness. Adverse effects of psilocybin can include temporary increase in blood pressure and a raised heart rate. There may be some risk of psychosis in predisposed individuals. The effects of MDMA and psilocybin are unlikely at low doses in the treatment regimens used in psychedelic-assisted psychotherapy while appropriately managed in a controlled environment with direct medical supervision. The risk profile of the MDMA inspired compounds is currently unknown.

The availability of these products is subject to the safety and efficacy of the products being tested through clinical trials. Emyria makes no representations or warranties as to the safety or efficacy of the products or the products' ability (or the ability of its key compounds) to be used in the treatment of indications such as PTSD. There are currently no approved products containing MDMA, psilocybin or MDMA inspired compounds that the TGA has evaluated for quality, safety and efficacy.

Corporate Overview



ASX: EMD Trading Information

Last Traded Share Price	A\$0.056
12-Month low / high	A\$0.023 / 0.078
Shares Outstanding	806,483,233
Unlisted Options (including loyalty options)	310,147,902
Market Capitalisation ¹	~A\$45m
Last Reported Cash Position ²	~A\$10.5m

Substantial Shareholder

Shareholder	%
#1 Holder: Greg Hutchinson, Exec. Chairman	5.29%

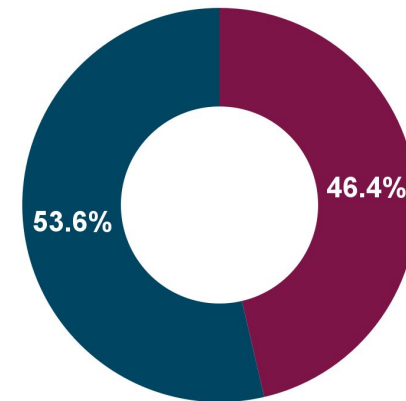
NOTES:
 1. As of market close 20 April 2026
 2. As reported in December 2025 Quarterly Report

Share Price



Shareholding

Top 50 ▶



For personal use only

Globally Mental Health Illness Is a Rising Chronic Health Problem



For personal use only



Over a billion people living with mental health conditions - services require urgent scale up¹

“Transforming mental health services is one of the most pressing public health challenges,”

WHO Director-General Dr Tedros Adhanom Ghebreyesus

THE LANCET
Psychiatry

The global **prevalence** of **mental health disorders** is **escalating** at a **staggering pace**; it has now reached **13.6%**²

Bupa Group CEO - Inaki Ereno

“Mental health is the new pandemic but the provision of mental health ... services is very fragmented, not only in Australia but everywhere³”



May 17, 2025 - 9.00am

SOURCES:

1. <https://www.who.int/news/item/02-09-2025-over-a-billion-people-living-with-mental-health-conditions-services-require-urgent-scale-up>
2. [https://www.thelancet.com/journals/lanpub/article/PIIS2468-2667\(25\)00261-0/fulltext](https://www.thelancet.com/journals/lanpub/article/PIIS2468-2667(25)00261-0/fulltext)
3. Australian Financial Review, May 17 2025

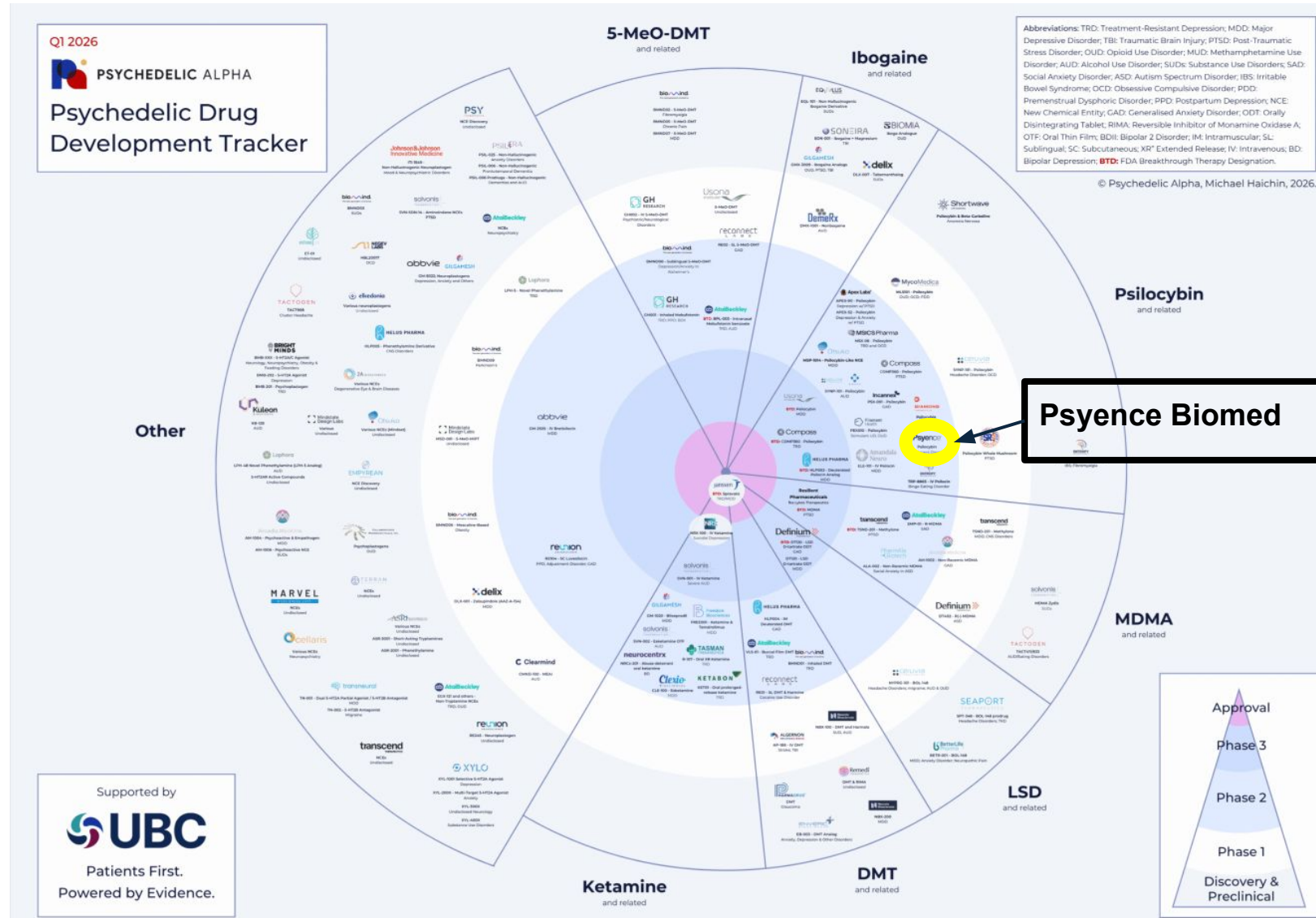
Significant Global Research in Psychedelic Drugs

For personal use only

More than 50 psychedelic-assisted therapy programs currently in development globally¹

US President Donald Trump signs Executive Order to fast-track research and patient access to psychedelic drugs²

EMD uniquely positioned to support these companies through existing clinical network from clinical trial execution and post-approval commercial roll-out³



1. Psychedelic Alpha, Psychedelic Drug Development Tracker: <https://psychedelicalpha.com/resources/psychedelic-drug-development-tracker/>
 2. <https://www.whitehouse.gov/fact-sheets/2026/04/fact-sheet-president-donald-j-trump-is-accelerating-medical-treatments-for-serious-mental-illness/>
 3. Refer ASX announcement 20 April 2026

Australia's Unique Opportunity

An Access Pathway For Psychedelics to Treat our Most Serious and Urgent Mental Health Conditions



For personal use only

Australia

is the FIRST jurisdiction in the world to reschedule two promising treatments

[Home](#) > [News and Community](#) > [Media releases](#)

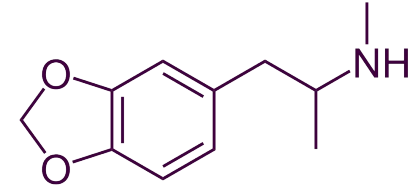
Change to classification of psilocybin and MDMA to enable prescribing by authorised psychiatrists

Published: 3 February 2023

[Listen](#) [Print](#) [Share](#)

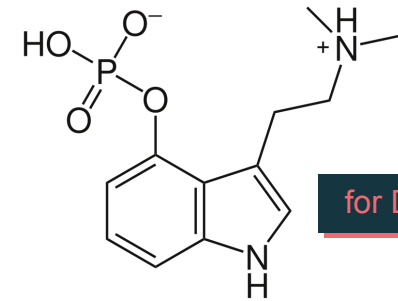
From 1 July this year, medicines containing the psychedelic substances psilocybin and MDMA (3,4-methylenedioxy-methamphetamine) can be prescribed by specifically authorised psychiatrists for the treatment of certain mental health conditions.

MDMA-assisted therapy



for PTSD

Psilocybin-assisted therapy



for Depression

Who is Emyria



VISION

To develop and implement a sophisticated, safe model for psychedelic-assisted mental health care - so emerging therapies can be delivered responsibly at scale.

MISSION

Emyria is establishing a network of clinics to expand at pace in a capital light fashion

SOURCES:

1. See ASX release 14 April 2025

2. See ASX release 29 July 2025

3. See ASX release 10 November 2025

4. See ASX release 16 December 2025

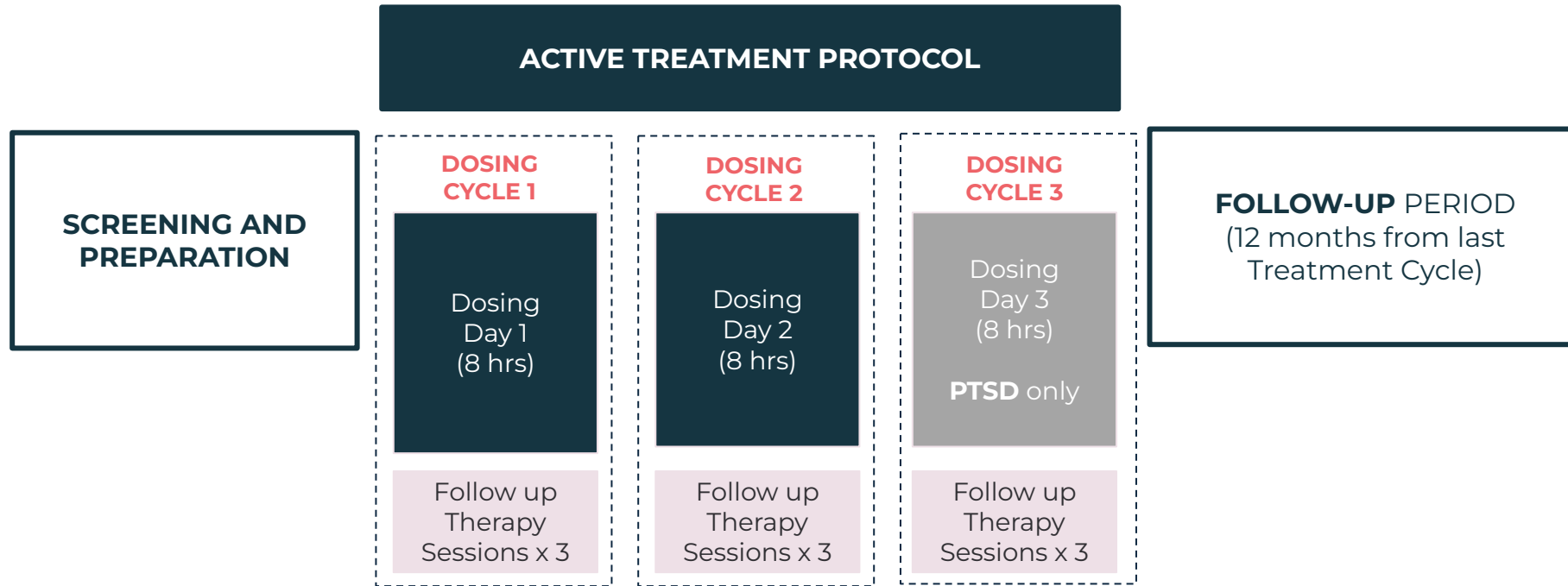


Emyria's P-AT Treatment Model

Medication, ~90 hours of Supervised Intensive Psychotherapy, Follow-Up



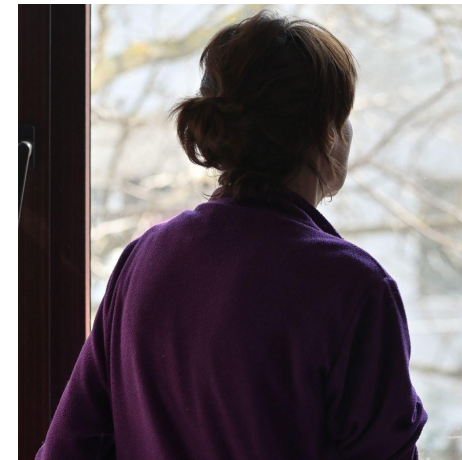
For personal use only



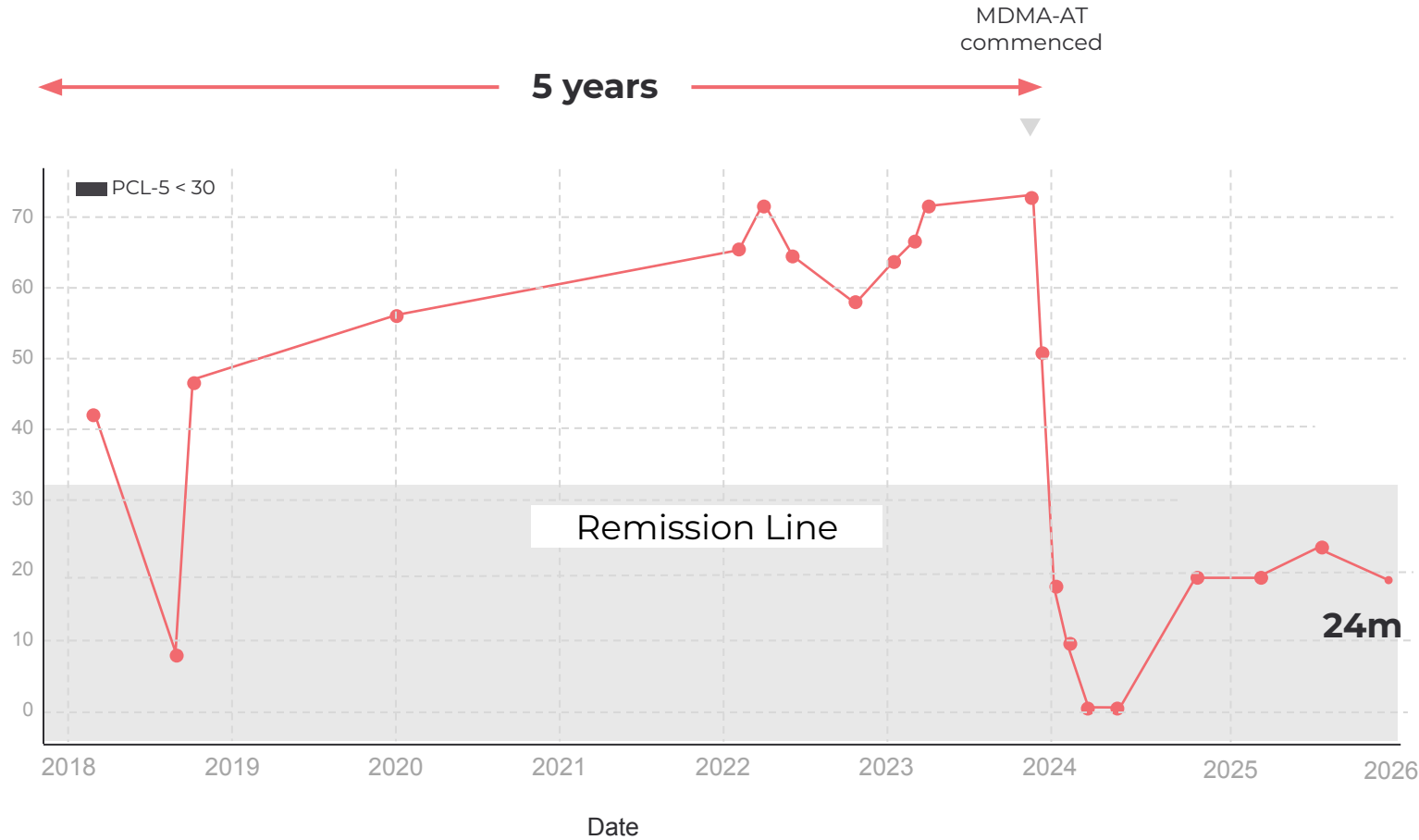
Each dosing cycle (medication and therapy)
~\$10,000 / patient

Emyria's PTSD Program Is Delivering Results

Case Study Kate | From "Permanent Disability" To Back at Work



For personal use only
PCL-5 SCORE¹



Kate's story: **First responder**

- **PTSD** due to cumulative workplace traumas
- Myriad of therapies: EMDR, in-vivo, ACT, CBT, mindfulness, somatic exercises, TMS, imagery rescripting, nightmare rescripting. Different psychotropic **medications**
- Stuck, terrified and tortured by her unrelenting symptoms and her psychological defenses.
- Despite all efforts and commitment, **treatment** and **therapy resistant**

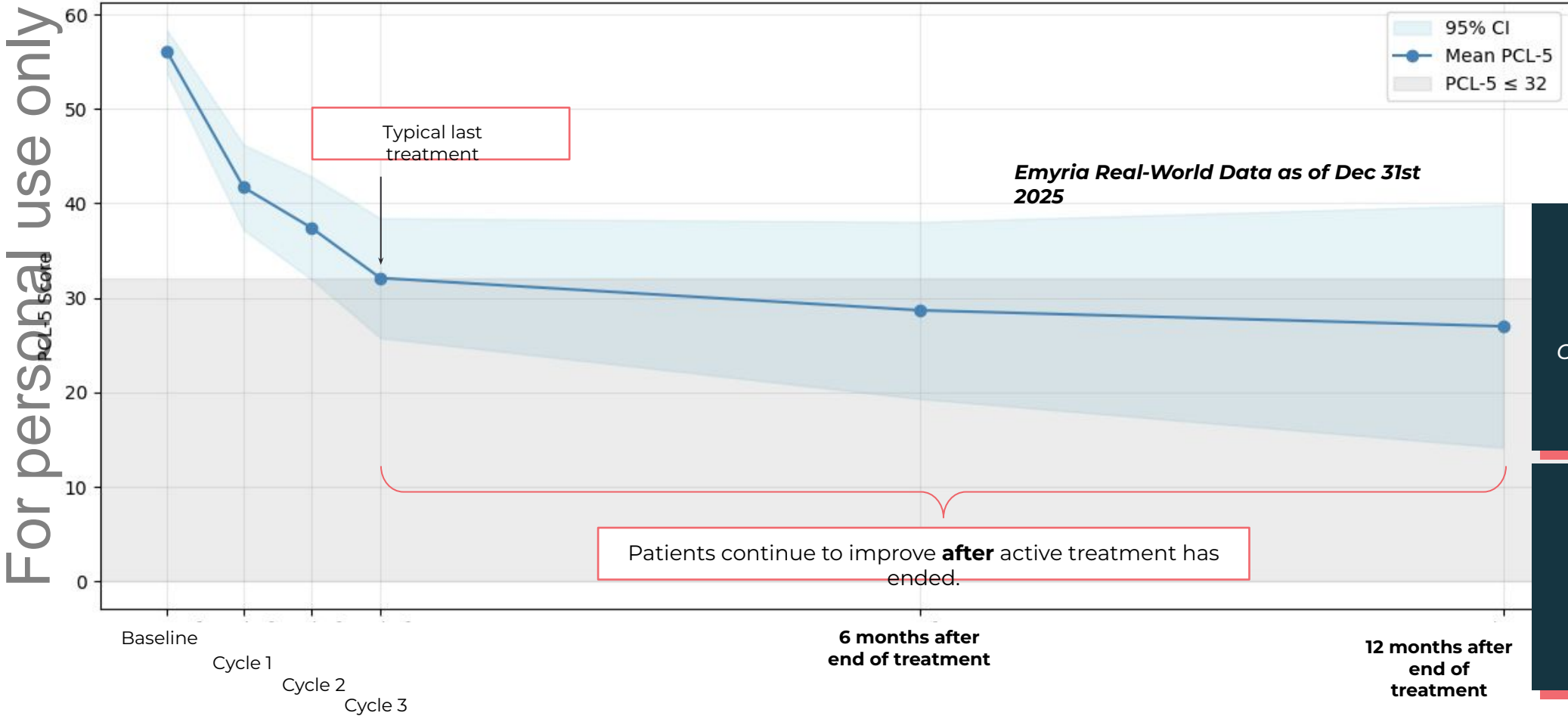
6m following MDMA-AT, Kate returned to work after nearly 5 years away. More than 12m after treatment, Kate remains in remission. (i.e. PCL-5 < 32)

SOURCES:
1. The PCL-5 is a self-administered, 20-item self-report tool used to measure PTSD symptoms according to diagnostic DSM-5 criteria (Diagnostic and Statistical Manual of Mental Disorders, 5th Edition).

Emyria's PTSD Program Is Delivering Durable Results

Durable symptom and quality of life improvement, beyond 12 months

● ● ● Average PCL-5¹ Scores by Visit (up to 12 months follow-up)



Emyria Real-World Data as of Dec 31st 2025

~67% of patients no longer meet criteria for PTSD diagnosis

~76% of patients have a clinically significant improvement

SOURCES:
1. The **PCL-5** is a self-administered, 20-item self-report tool used to measure PTSD symptoms according to diagnostic DSM-5 criteria (Diagnostic and Statistical Manual of Mental Disorders, 5th Edition).

Emyria Has Developed Significant Scalable Delivery IP and Know How



For personal use only



THE AUSTRALIAN

MDMA to treat PTSD? Medibank says yes

Australian Government
Department of Veterans' Affairs

Total Addressable Australian Market | PTSD +TRD

Adults with difficult to treat PTSD and TRD in Australia



For personal use only

**Australian Adults
With PTSD**

~1,500,000¹

~7% of all adults

**~\$33,000
/ Treatment²**

**Australian Adults
With Major
Depression**

~1,100,000¹

*~4% of adults have
Major Depressive
Disorder*

**~\$22,000
/ Treatment³**

SOURCES:

1. <https://www.abs.gov.au/statistics/health/mental-health/national-study-mental-health-and-wellbeing/latest-release#key-statistics>

2. Average full treatment cost assuming 3 treatment cycles completed

3. Average full treatment cost assuming 2 treatment cycles completed

Emyria | Why Invest



For personal use only

First mover advantage
globally

Significant **Total
Addressable Market**
globally

Operationalised the
delivery of PAT **at Scale**

Capital Light approach
to clinics expansion

Delivering **durable**
outcomes

Generating **revenue**

Emyria Board

Significant Clinical Services & Global Innovation Expertise



For personal use only



Greg Hutchinson
Executive Chairman

Health Service Leadership:

5D Clinics
Former CEO Sonic HealthPlus
leading 40+ clinics



Dr Michael Winlo
Executive Director

Research & Data Expertise:

Ex-Palantir healthcare lead,
Medical Doctor and Stanford
MBA



Dr Karen Smith
Non-Executive
Director

Biopharma Executive:

100+ clinical trials and 20+
regulatory approvals; Former
Chief Medical Officer and Global
Head of R&D at Jazz Pharma



Dr Mohit Kaushal
Non-Executive
Director

Health IT Strategist:

Key role in Oak Street Health's
\$10.6B acquisition by CVS
Health; Served in Obama's
Health IT task force; Adjunct
Professor at Stanford



Prof Sir John Tooke
Non-Executive
Director
Clinical Service & Health Payer Expertise:

Former President of the
Academy of Medical Sciences,
influential roles at BUPA and
past advisor to Google DeepMind



Contact Information



Greg Hutchinson

ghutchinson@emyria.com

Mary-Ann

Rennie
mar@emyria.com

**Investor /
Media Inquiries**

investors@emyria.com

emyria



**Visit Our
Investor Hub**

For personal use only