



Advancing USA and Australian Critical Mineral Projects

EGM Presentation & Company Update Presentation

ASX:OD6

20 April 2026

For personal use only

IMPORTANT INFORMATION

Disclaimer

This presentation has been prepared by OD6 Metals Ltd (ACN 654 839 602) (**OD6**) and is current as at the date of this document. The information contained in this presentation is a summary and for informational purposes only and does not constitute an offer to issue, or arrange to issue, securities or other financial products. The information contained in this presentation is not investment or financial product advice and is not intended to be used as the basis for making an investment decision. The presentation has been prepared without considering the investment objectives, financial situation or needs of any particular person. Before making an investment decision, you should consider, with or without the assistance of a financial adviser, whether an investment is appropriate considering your particular investment needs, objectives and financial circumstances. Past performance is no guarantee of future performance. Any securities that may be issued by OD6 should be considered speculative and there is no guarantee implied or explicit that there will be a return on the capital invested or that any dividend will be paid or that there will be an increase in the price or value of OD6's shares in the future.

No representation or warranty, express or implied, is made as to the fairness, accuracy, completeness or correctness of the information, opinions and conclusions contained in this presentation. To the maximum extent permitted by law, none of OD6, its directors, employees or agents, nor any other person accepts any liability, including, without limitation, any liability arising out of fault of negligence, for any loss arising from the use of the information contained in this presentation. In particular, no representation or warranty, express or implied is given as to the accuracy, completeness or correctness, likelihood of achievement or reasonableness or any forecasts, prospects or returns contained in this presentation nor is any obligation assumed to update such information. Such forecasts, prospects or returns are by their nature subject to significant uncertainties and contingencies.

No New Information

This document contains information extracted from OD6's ASX market announcements reported in accordance with the 2012 edition of the "Australasian Code for Reporting of Exploration Results, Mineral Resources and Ore Reserves" (**JORC Code**), which were prepared by a Competent Person in accordance with the JORC Code and are available for viewing at <https://www.od6metals.com.au/investors/asx-announcements/>. OD6 confirms that it is not aware of any new information or data that materially affects the information included in any original ASX market announcement. The Company confirms that the form and context in which each relevant Competent Person's findings are presented have not been materially modified from those announcements.

The information in this report relating to the Mineral Resource estimate for the Splinter Rock Project is extracted from the Company's ASX announcement dated 29 May 2024. OD6 confirms that it is not aware of any new information or data that materially affects the information included in the original announcement and that all material assumptions and technical parameters underpinning the Mineral Resource estimate continue to apply.

Forward Looking Statements

Certain statements contained in this presentation, including information as to the future financial or operating performance of OD6 and its projects, are forward looking statements. Such forward looking statements:

- may include, among other things, statements regarding incomplete and uncertain proposals or targets, production and prices, operating costs and results, capital expenditures, and are or may be based on assumptions and estimates related to future technical, economic, market, political, social and other conditions;
- are necessarily based upon several estimates and assumptions that, while considered reasonable by OD6, are inherently subject to significant technical, business, economic, competitive, political and social uncertainties and contingencies; and
- involve known and unknown risks and uncertainties that could cause actual events or results to differ materially from estimated or anticipated events or results reflected in such forward-looking statements.

OD6 disclaims any intent or obligation to update publicly any forward-looking statements, whether as a result of new information, future events or results or otherwise. The words "believe", "expect", "anticipate", "indicate", "contemplate", "target", "plan", "intends", "continue", "budget", "estimate", "may", "will", "schedule" and similar expressions identify forward looking statements. All forward looking statements made in this presentation are qualified by the foregoing cautionary statements. Recipients are cautioned that forward looking statements are not guarantees of future performance and accordingly investors are cautioned not to put undue reliance on forward looking statements due to the inherent uncertainty therein.

No representation is made that, in relation to the tenements the subject of this presentation, OD6 has now or will at any time in the future develop further resources or reserves within the meaning of the JORC Code.



BUILDING A MULTI-COMMODITY CRITICAL MINERALS COMPANY

For personal use only

QUINN FLUORSPAR - USA



SPLINTER ROCK RARE EARTHS - WA



GULF CREEK COPPER - NSW



CORPORATE SNAPSHOT

Capital Structure (proforma post EGM) ASX: OD6

Price per share ¹	A\$0.185
Total number of shares on issue ²	286.64 M
6.5c options ²	8.72 M
10c options ^{2,3}	69.23 M
Other options ²	8.55 M
Performance rights ²	1.30 M
Market capitalisation (undiluted) ²	A\$53.0 M
Cash ²	A\$4.0 M
Debt ²	Nil
Enterprise value	A\$49.0 M

Share Price 12 Month History A\$/share



Mr Brett Hazelden
MANAGING DIRECTOR



Mr Piers Lewis
NON-EXECUTIVE CHAIRMAN



Dr Mitch Loan
NON-EXECUTIVE DIRECTOR



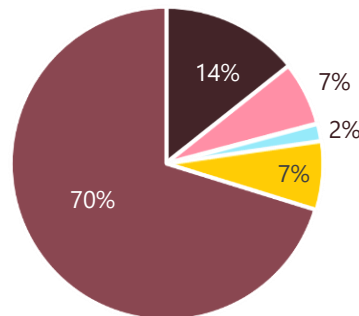
Dr Darren Holden
Geological Advisor



Hon Julie Bishop
Strategic Advisor



Register Detail & Research



- Founders
- Directors and Management
- Family Offices and Institutions
- Remainder of top 20
- Retail / Other



1. As at 16 April 2026
2. Proforma post EGM approval Tranche 2 issue
3. 34.2m 10c Options proposed to be listed in May



For personal use only

For personal use only

Quinn Fluorspar Project Acquisition

A Strategic US Critical Mineral Opportunity



For personal use only.

QUINN FLUORSPAR PROJECT, NEVADA USA

Located in Nevada: Tier-1 US mining jurisdiction

Essential role in AI semi-conductor chips, batteries, nuclear power, aerospace and defense.

High-Grade Epithermal fluorspar (CaF₂) at a district scale

Grades up to 94% CaF₂ in rock samples and 75% CaF₂ in channel samples

Critical Mineral Listed – US, EU, Canada, Australia, Japan

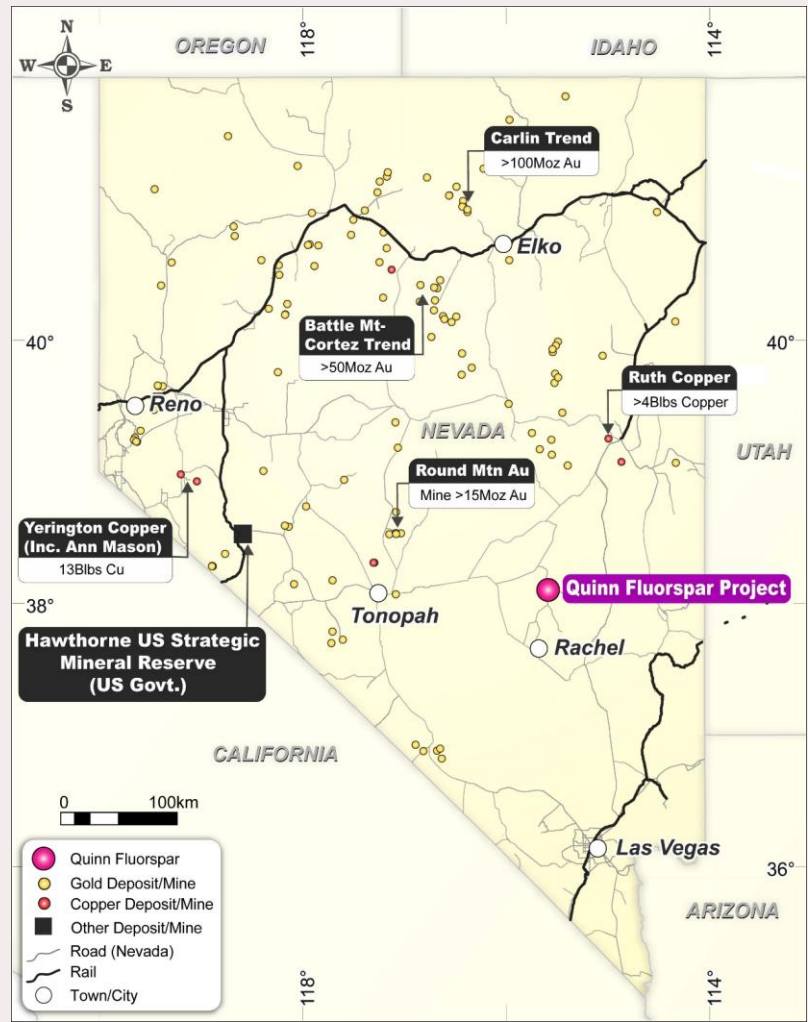
US 100% import reliant – last major production in 1990s

Quinn’s **targeting US market with ~400ktpa demand**

TVN Case Study at ~\$800M market cap supplying Asia

- Acquisition structure with **low upfront risk and cost**

Refer [ASX announcement 4 March 2026](#) for information sources



ABOUT FLUORSPAR

For personal use only

A US\$3-4 Billion Acidspar Market

- Fluorspar (**also known as fluorite**) is a simple mineral with the formula **CaF₂**, which contains 48.9% fluorine by weight
- Fluorspar is the main mineralogical source of fluorine
- High-grade fluorspar mineralisation is typically upgraded through simple processing to produce concentrates
- >97% CaF₂ concentrate known as **Acidspar**
- 60-96% CaF₂ product known as **Metspar**
- Fluorspar is generally sold as a mineral product

ESSENTIAL USES

Future Facing Products

- **Fluorspar is essential in:**
 - AI semi-conductor chip etching
 - Advanced battery technologies
 - Nuclear fuel processing
 - Defense
 - Hydrofluoric acid production
 - Steel and Aluminium production
 - Fluorocarbon refrigerants
- Spot prices are currently approximately **US\$450-\$650/t**
- Fluorspar demand is expected to grow considerably in coming years



CRITICAL MINERAL

For personal use only

US 100% Import Reliant

Fluorspar is officially recognised as a U.S. critical mineral, underpinning national security, concentrated supply chain, industrial resilience, and energy transition objectives.

Fluorspar is listed on the U.S. Critical Minerals List, first formalised by Donald Trump - Executive Order 13817

The designation reflects:

- High import to dependence
- Concentrated foreign supply
- Essential downstream industrial uses

• **Australia, EU, Canada, Japan** – recognised Critical Mineral

NEVADA

Consistently ranked as one of the world's best mining jurisdictions

- **Nevada is ranked the best mining jurisdiction globally**, on Investment Attractiveness Index and consistently ranked among the top five globally on Policy Perception and Best Practice Mineral Potential according to the Fraser Institute.
- **The state provides established mining infrastructure** and a transparent permitting framework supportive of critical minerals development.
- **Nevada hosts successful ASX-listed companies**, including Sun Silver Ltd (SS1.ASX), which is advancing the Maverick Springs Silver Project and American Tungsten and Antimony Ltd (AT4.ASX) which is advancing 2 Tungsten projects in Nevada.



STRATEGIC POSITIONING

Potential Government Support

Fluorspar directly supports domestic manufacturing, electrification, defence readiness, and chemical sovereignty, making U.S. projects well-positioned for:

- Federal and State loan programs
- Strategic offtake backing
- Permitting prioritisation at state and federal levels

United States, initiatives such as the “**FAST-41**” permitting pathway may support accelerated development for priority mineral projects.

Trump administration’s “**Project Vault**” which aims to establish a US\$12B critical minerals stockpile.

Australian Government has established the A\$1.2B **Critical Minerals Strategic Reserve** (CMSR).

Ares Strategic Mining (CSE: ARS) secured major multi-year U.S. Department of Defense contract worth up to US\$250M over five years.



For personal use only

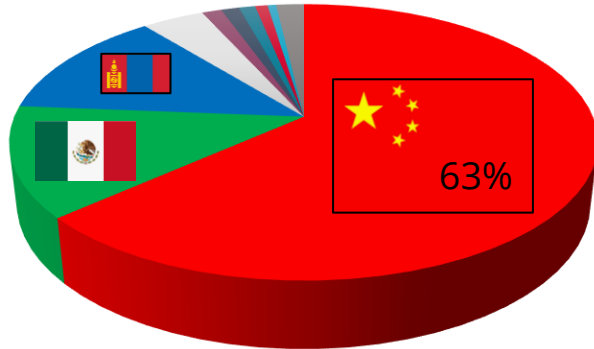
SUPPLY RISK

Price Forecast to Increase

China, Mongolia and Mexico dominate global supply

The US is highly dependent on imports for fluorspar

Leading countries based on mine production of fluorspar worldwide in 2024 (in 1,000 metric tons)



- China
- Mexico
- Mongolia
- Spain
- Iran
- Vietnam
- Germany
- Thailand
- Pakistan
- Other Countries

Source: https://www.statista.com/statistics/1051717/global-fluorspar-production-by-country/#google_vignette

Fluorspar deficit

In 2025, fluorspar demand forecast to exceed current production capacity by **1%–4%**

By 2035, all demand projections will exceed current production capacity by **40%–70%**



Source: US Department of Energy, Critical Materials Assessment, 2023



Currently ~8 Mtpa Global Demand for Fluorspar



AI SEMI-CONDUCTORS

Fluorine is Non-Substitutable

Fluorine compounds are essential in **plasma etching and wafer cleaning** in semiconductor chips for use in AI

Plasma etching requires **fluorinated gases** for extreme precision

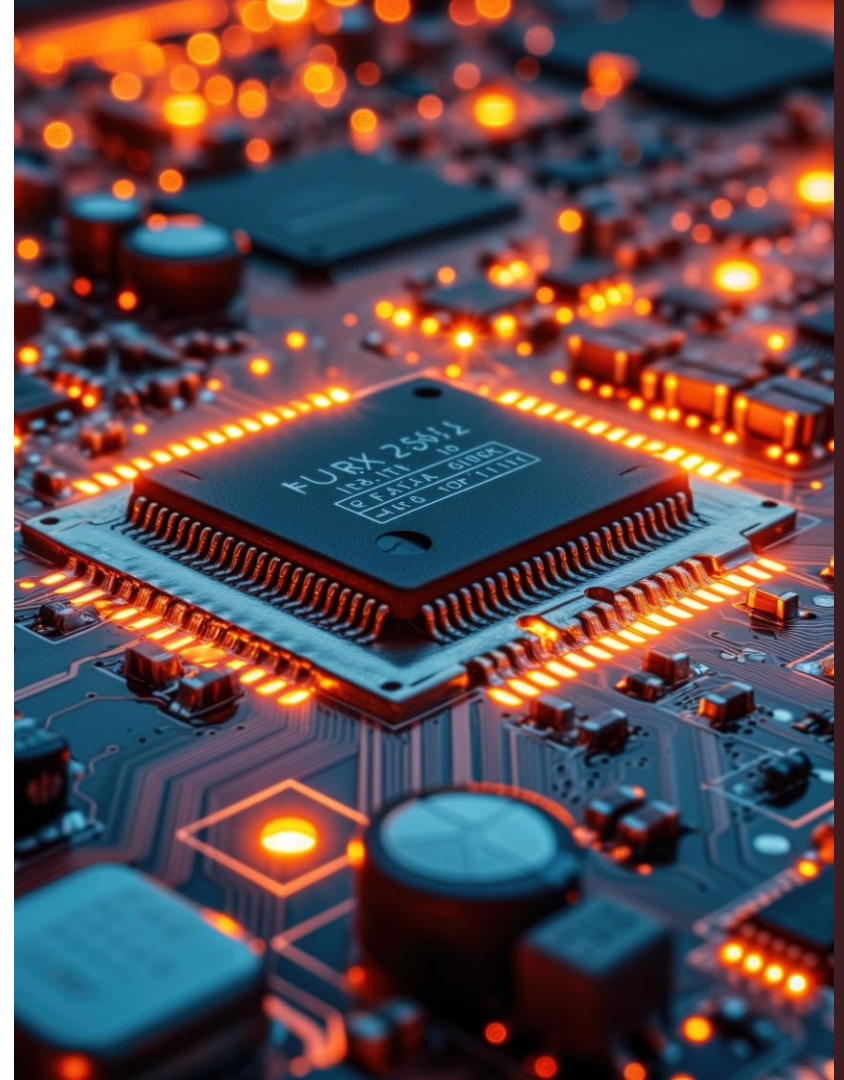
Tungsten hexafluoride (WF_6) [inventories are low currently](#)

Advanced logic nodes (AI GPUs) require higher etching intensity per wafer

TSMC, Intel & US domestic fabrication expanding capacity

US CHIPS Act investing US\$50+ billion

- More advanced chips = more fluorine per wafer



BATTERIES

No Fluorine, No Lithium Battery

- Advance Lithium-ion batteries technologies use **LiPF₆** as the dominant electrolyte salt
- **4.5% Li , 20.5% P and 75% Fluorine by weight**
- **~1kg fluorine is required per 1 kWh of battery capacity**
- Higher-energy EV batteries require greater fluorine intensity per cell
- **Battery reality:** There is no commercially scalable lithium-ion chemistry without fluorine — and no fluorine without fluorspar.
- US domestic **EV and battery plant build-out** accelerating
- IRA incentives driving **US-based battery gigafactories**



NUCLEAR POWER

Fuel Rods Needs Fluorine - UF₆

- Fluorine is a critical reagent in the enrichment of uranium as a nuclear fuel source
- Yellow Cake (U₃O₈) is converted to **Uranium Hexafluoride (UF₆)**, Enriched in Centrifuges, used in Nuclear Fuel Rods
- SMRs (Small Modular Reactors) expanding
- US nuclear fleet extensions
- Nuclear fuel demand rising
- Uranium enrichment capacity being reshored
- **AI Data Centers proposing Nuclear Power Stations for reliable power supply**

[Google joins Microsoft in plans to restart US nuclear plants to power AI infrastructure](#)



DEFENSE

Fluorine Underpins Military Capability

- Fluorine compounds are considered critical for:
 - Missile guidance electronics (semiconductor etching)
 - Radar and satellite systems
 - Jet engine components & high-temperature alloys
 - Military-grade lithium batteries
 - Uranium enrichment for naval propulsion
 - Specialty optical lenses (calcium fluoride crystals)
 - Submarine electronics
 - AI data centers
- **US seeks onshore supply chain sovereignty**



TVN CASE STUDY

Complimentary Mines & Markets

- Tivan Ltd (TVN.ASX) Speewah Project hosts a JORC compliant Resource of:
43.2 Mt @ 8.3% CaF₂ (at a 2% CaF₂ cut-off grade) containing 3.6 Mt CaF₂
- TVN targeting supplying Japan based on a 77.5% :22.5% JV with Sumitomo and JOGMEC
- CAPEX A\$301M, All in Sustaining OPEX A\$513 /t for 149 ktpa Fluorspar + 0.15 ktpa Metspar production
- OD6 grades significantly higher = potentially lower CAPEX and OPEX Costs
- OD6 Quinn's targeting US market which currently has ~400ktpa demand
- Significant upside potential for OD6

Refer: Tivan ASX Announcement [MRE 4 February 2026](#), and [ES Report 20 March 2026](#)
OD6 makes no representations regarding Tivan's Resource.

TVN MARKET CAP ~A\$800M



As 16 April 2026



LOCATION & ACCESS

Large Effective Transport Network

~220km north of Las Vegas

~130km east of mining centre Tonopah

~300km by road from newly established Hawthorne US Strategic Minerals Reserve (US Govt.)

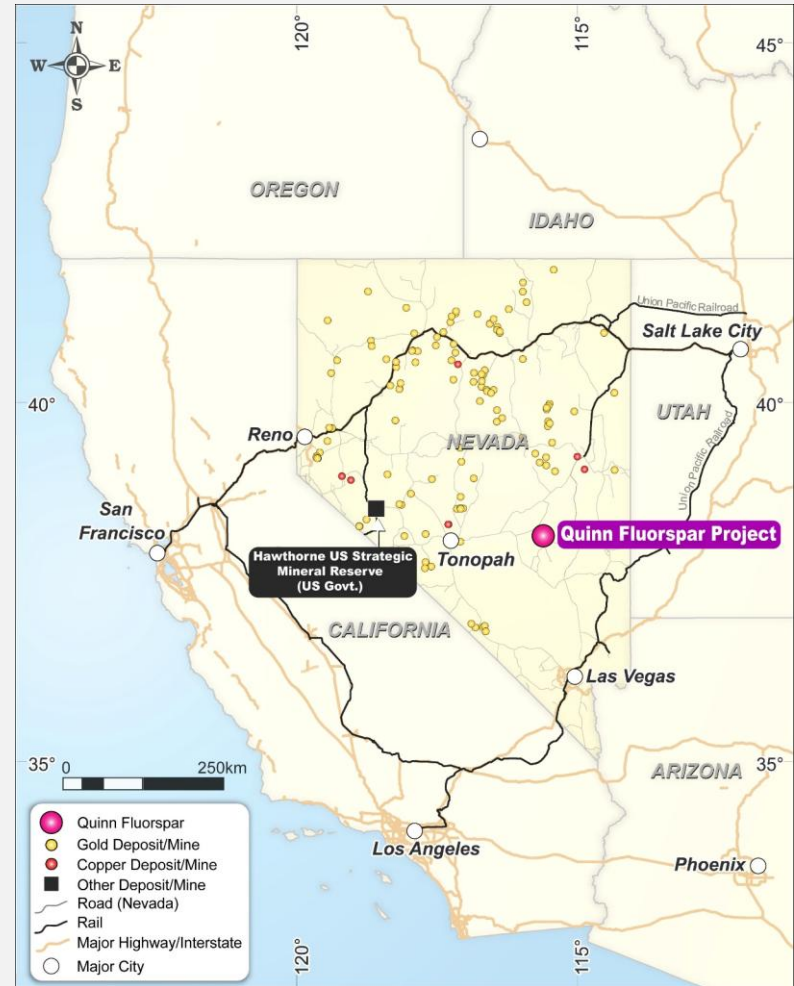
Excellent road and rail access and proximity to established mining regions

Numerous Ports on the West Coast

US Interstates offer easy transport to end user

The Project area has excellent access

- ~35km on well formed county roads from the township of Rachel
- ~5km on existing track that cross the project area



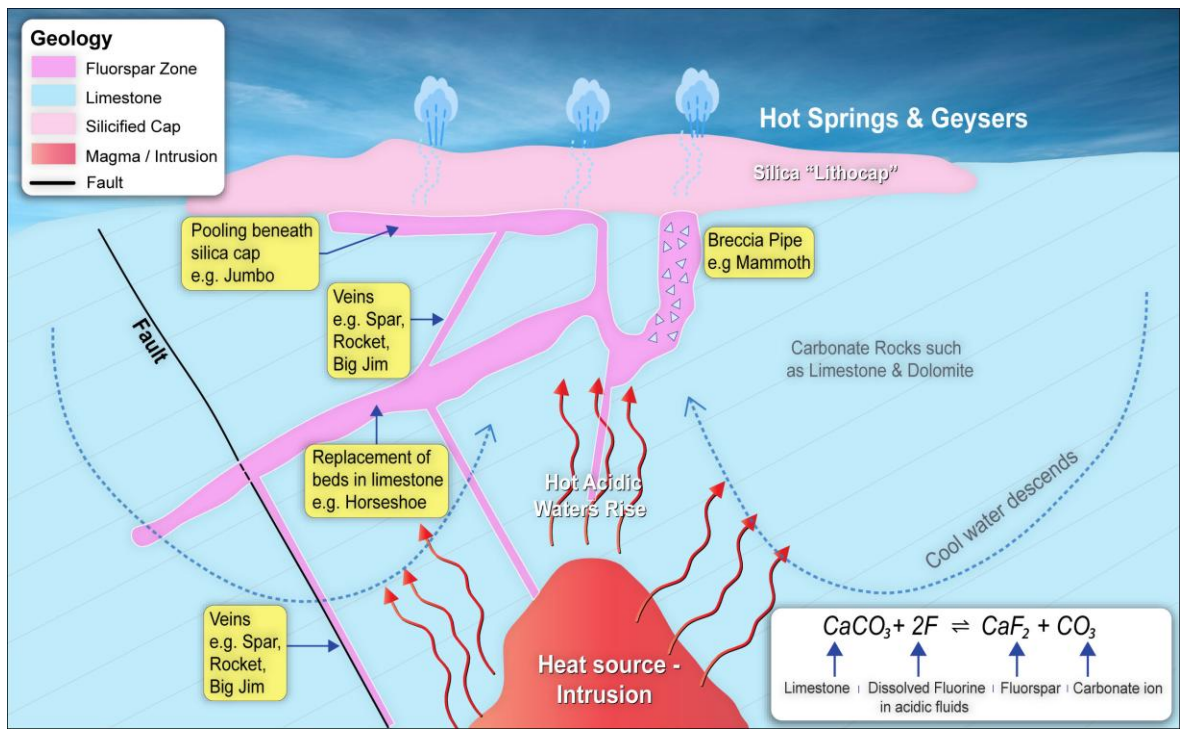
For personal use only

EPITHERMAL FLUORSPAR FORMATION

Fluorspar deposits form in the near surface epithermal environments

Fluorine bearing hydrothermal acidic fluids rise from an intrusive source

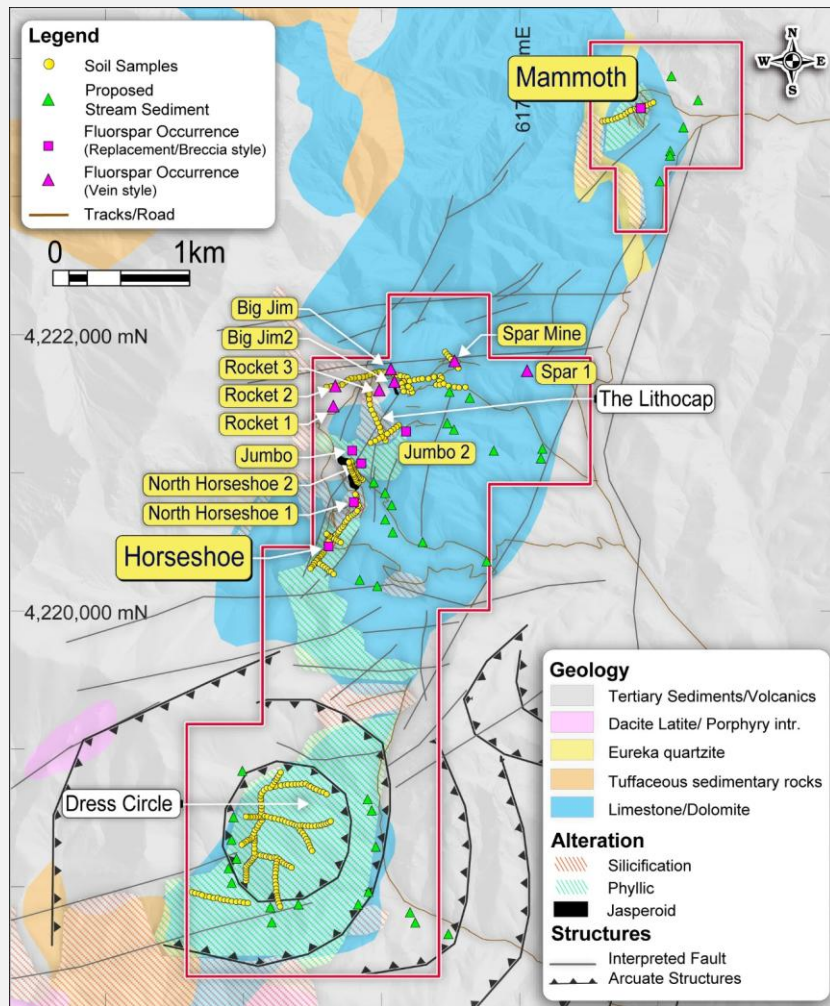
The **acid reacts with the limestone** (CaCO_3) and other carbonates and **forms fluorspar** CaF_2



LOCAL GEOLOGY

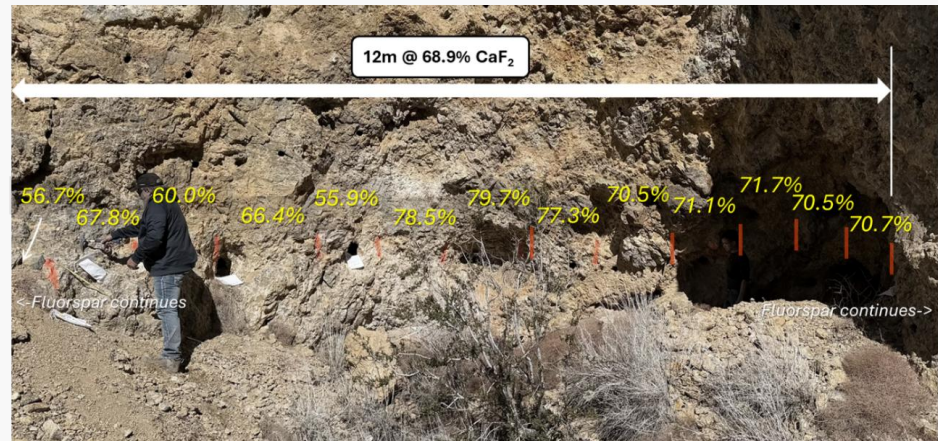
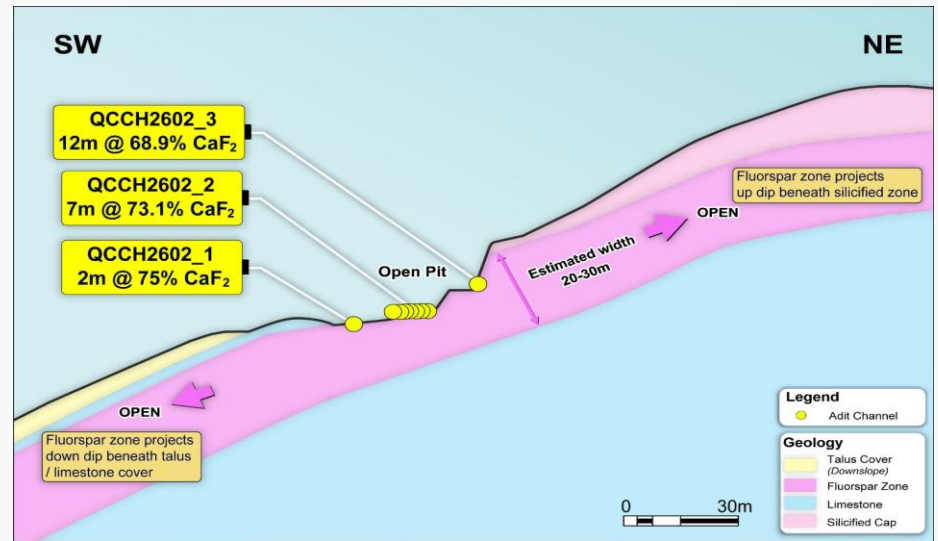
Multiple Fluorspar Outcrops

- **Right setting for district-scale project**
- Quinn Fluorite Project consists of Paleozoic **limestones and dolomites**
- Tertiary volcanism in the area introduced hydrothermal alteration and emplaced fluorite as veins, breccia and replacing strata in the limestones
- Limestone & dolomites (carbonate rocks) are very reactive to acidic hydrothermal fluids and are excellent foci for mineral deposits including fluorspar



HORSESHOE DEPOSIT

- 26,000 tonnes mined in historic shallow open pits
- ~3,000 m² mapped zone of **high-grade fluorspar**
- Continuous channel samples results include:
 - ❑ 12m @ 68.9% CaF₂ including a peak value of 79.7% CaF₂
 - ❑ 7m @ 73.1% CaF₂ including a peak value of 82.0% CaF₂
 - ❑ 2m @ 75% CaF₂ including a peak value of 79.9% CaF₂
- Likely extends up and down dip beneath silicified limestone and talus cover
- **Estimated thickness of 30m**
- Grades support potential for Direct Shipping Ore (DSO) of Metspar (60–96% CaF₂)
- **Potential DSO Early Mining Option**



Refer [ASX announcement 4 March 2026](#) and [ASX announcement 15 April 2026](#)

HORSESHOE DEPOSIT

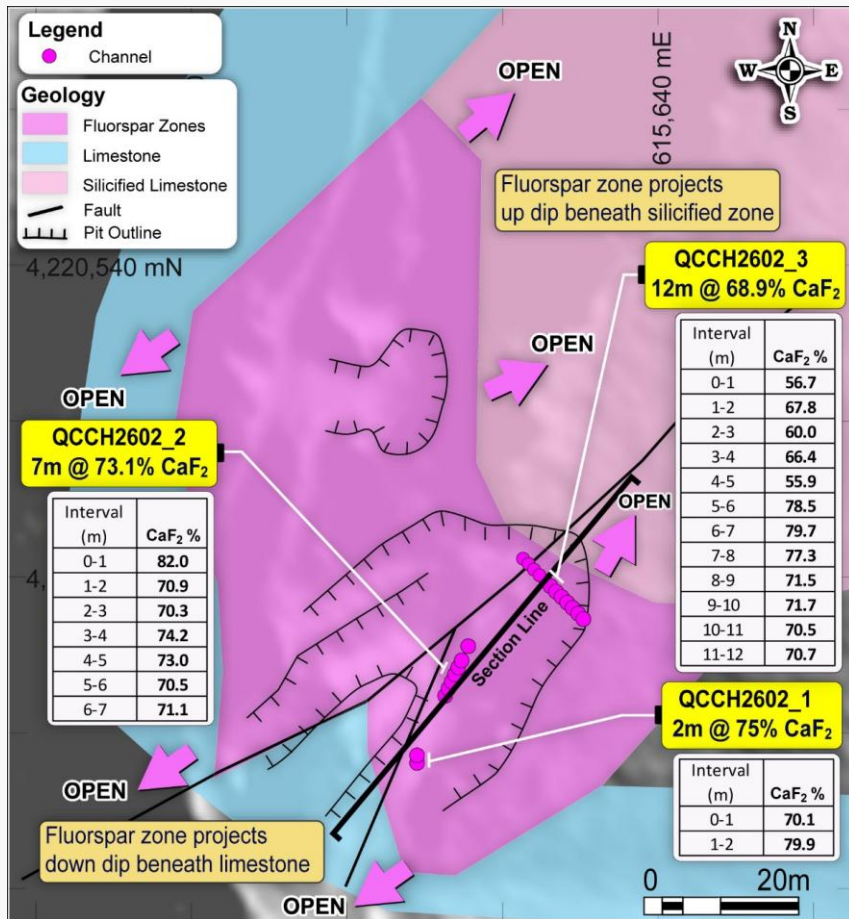
For personal use only



View SE of in-pit (channel QCCH2602_1) sampling at Horseshoe.

Orange marks indicate 1m samples.

Only the reachable extent of the outcrop was sampled.



MAMMOTH DEPOSIT

~9,000 m² mapped zone of high-grade fluorspar

Breccia fill fluorspar with 'raccoon-tail' textures

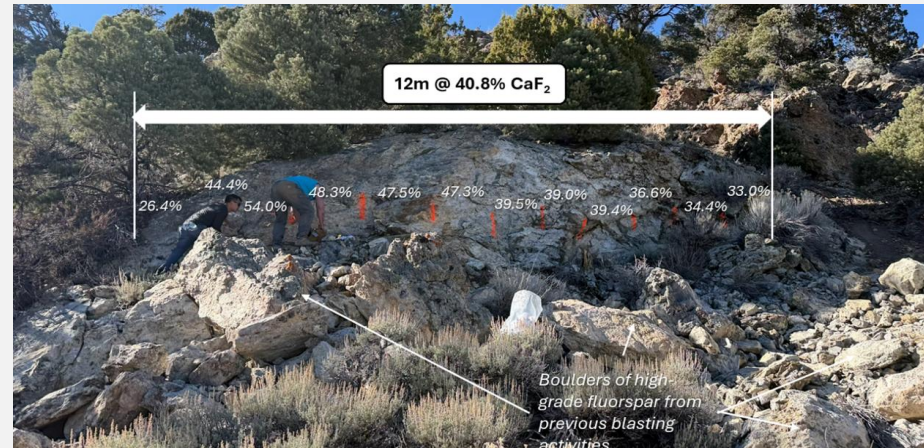
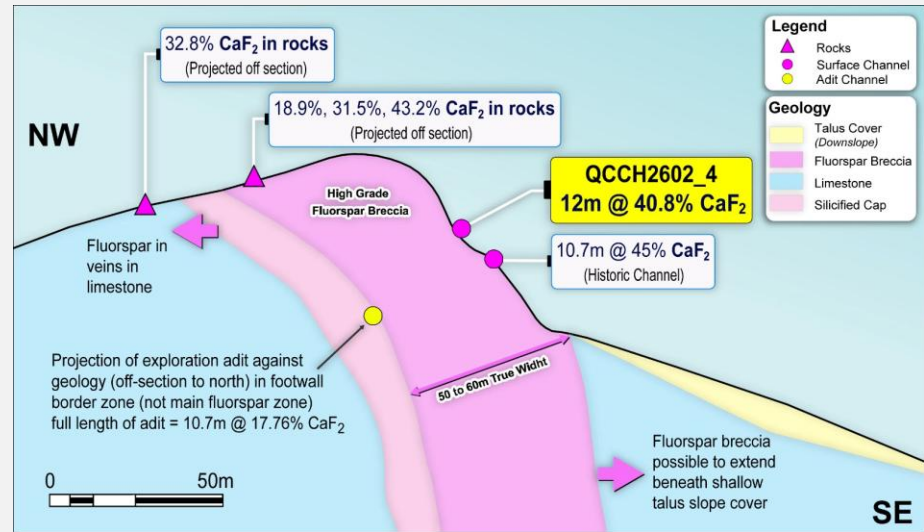
Previous sample results in the main zone including:

- ❑ Up to 80.1% CaF₂ in rock results
- ❑ 15.2m @ 48% CaF₂ in channel sampling
- ❑ 12m @ 40.8% CaF₂ in channel sampling
- ❑ 10.7m @ 44.9% CaF₂ in channel sampling

34.9% CaF₂ estimated average main zone grade

Channel sampling demonstrates persistent high-grade Fluorspar continuity across the exposed outcrop.

Geological indicators suggest the surface expression is representative of a potentially larger mineralised system extending at depth and along strike



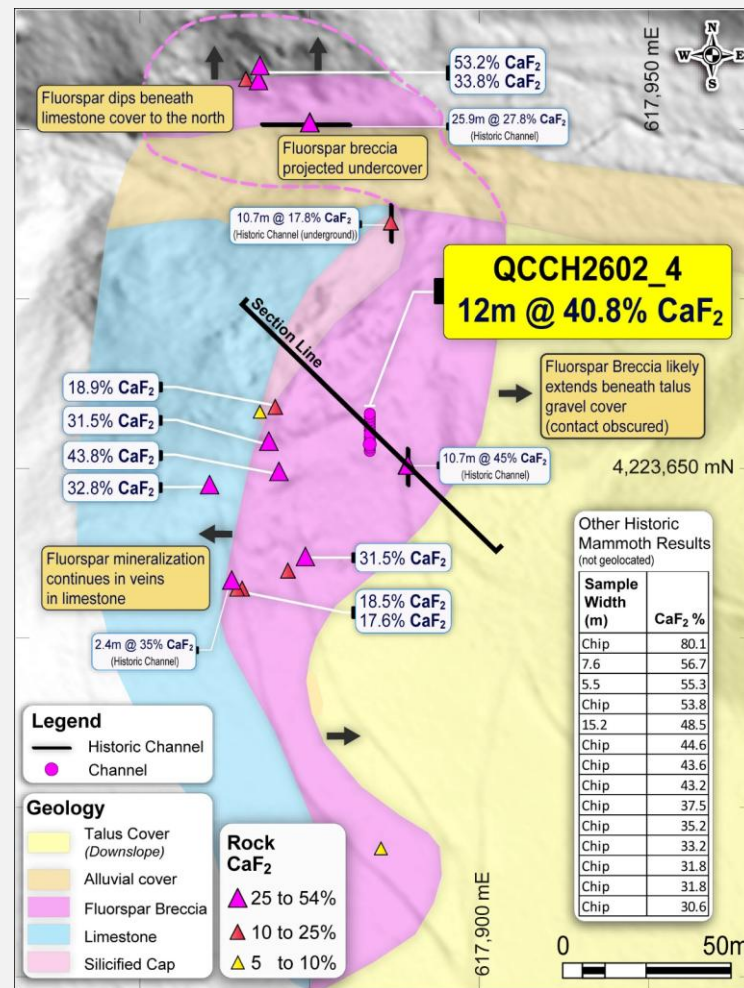
Refer [ASX announcement 4 March 2026](#) and [9 April 2026](#) and [7 April 2026](#)

MAMMOTH DEPOSIT

For personal use only



Northern extension of Mammoth with fluspar outcropping and plunging into the side of the hill beneath unmineralized limestone cover.



Refer [ASX announcement 4 March 2026](#) and [9 April 2026](#) and [7 April 2026](#)



THE HORSESHOE TO JUMBO CORRIDOR

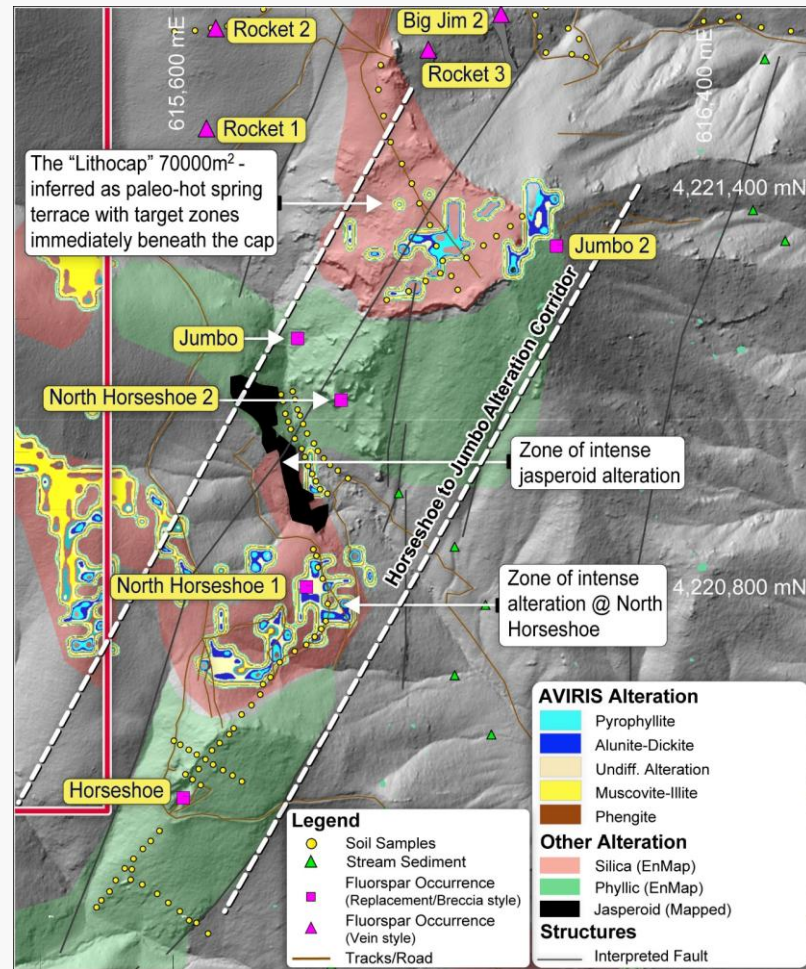
1.1km long high intensity alteration zone linking Horseshoe to Jumbo prospects

Intense epithermal alteration including pyrophyllite; alunite-dickite and phyllic alteration – **indicative of substantial epithermal cell**

70,000 m² lithocap indicates large epithermal system with target beneath

Jasperoid replacement – the most intense alteration of all

Potential to link stratigraphic controlled (replacement mineralization), from **Horseshoe to North Horseshoe and beyond**



For personal use only

ADDITIONAL PROSPECTS

Extensive epithermal alteration system

8km long regional target alteration zone from **Dress Circle to Mammoth**

Spar Mine

6.1m @ 78% CaF₂ in channel sample

6.1m @ 71% CaF₂ in channel sample

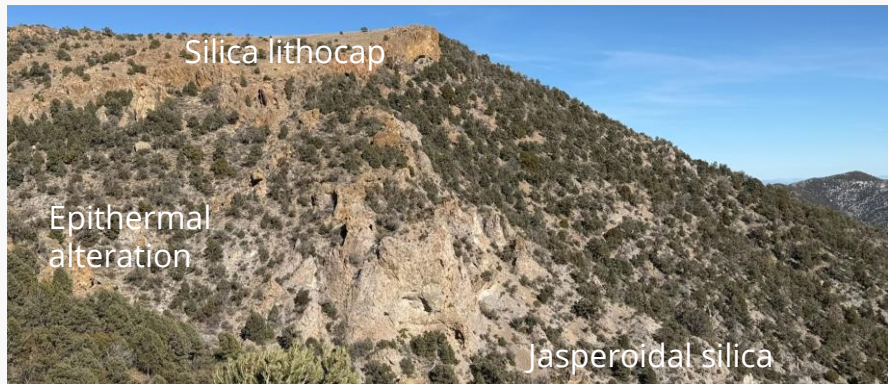
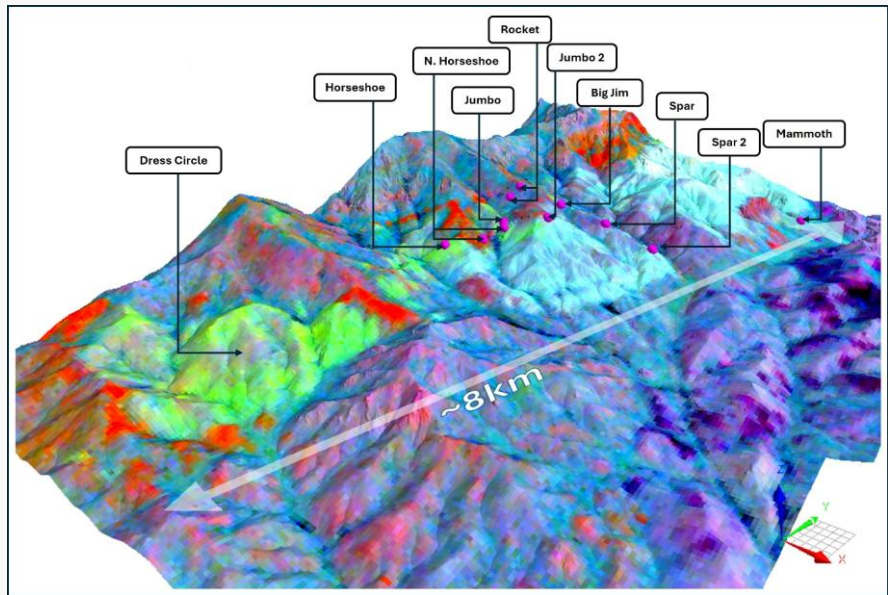
Big Jim

94% and 90% CaF₂ in rock chips from 1 to 2m wide vein
74.9% CaF₂ in 0.3m rock chip from altered sediments above the vein

Rocket, Jumbo and North Horsehoe CaF₂ occurrences noted by USGS

Dress Circle: a 2km by 1.8m zone of intense alteration

Additional potential targets beneath the Lithocap (estimated 20 to 40m beneath the surface).



SIMPLE RESOURCE DELINEATION, MINING & PROCESSING



OD6 plans to delineate a Fluorspar resource at Quinn's through systematic drilling of known mineralisation



Based on the project's mining history and known geology, open pit mining methods should be suitable with underground mining options for some potential high-grade deposits



Processing pathway likely to be simple crushing, milling and flotation to produce an Acidspar product. Metspar could be produce as a simple crushed lump and fines product

ACQUISITION TERMS

Favorable Deal, Based on Success

- For personal use only
- Low risk upfront payment of A\$75k to acquire 120 day option, extendable for a further 60 days on A\$25k payment
 - Option exercise payment of A\$200k (50% cash and 50% shares) upon OD6 being satisfied with due diligence and otherwise comfortable with completing.
 - Drill permit approval payment of A\$200k (50% cash and 50% shares)
 - Drill commencement payment of A\$350k (50% cash and 50% shares)
 - Deferred payments of A\$3.25m (50% cash and 50% shares) are also payable upon achievement of certain milestones
 - 2% net smelter royalty (NSR) on any fluorspar minerals recovered from the Project (**Fluorspar Royalty**), plus 1% NSR on all other metals
 - Buyback of 50% of Fluorspar Royalty by making payment of US\$1 million and First Right of Refusal for sale of Royalty by Sellers

Deferred Milestones

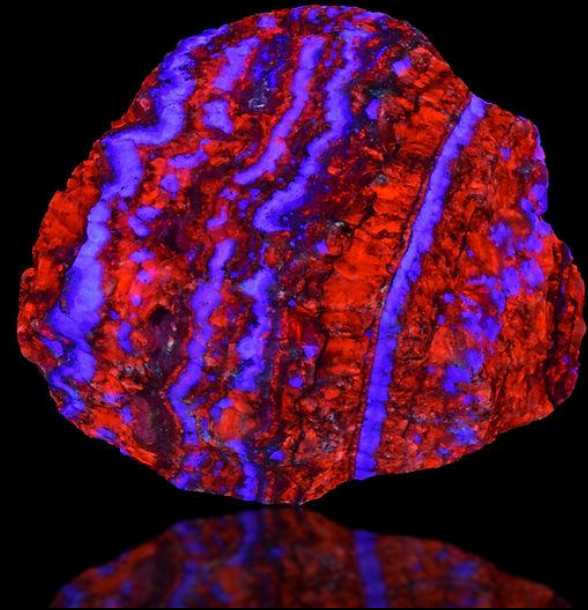
- **Milestone 1 (\$500k)** – JORC-compliant Indicated Mineral Resource >2 million tonnes at an average grade >30% CaF₂
- **Milestone 2 (\$750k)** – JORC-compliant Indicated Mineral Resource >5 million tonnes at an average grade >30% CaF₂ and metallurgical recovery >75%
- **Milestone 3 (\$1M)** – Bankable Feasibility Study, based on JORC Ore Reserves and a IRR >20%
- **Milestone 4 (\$1M)** – Commencement of Commercial Production

NEXT STEPS

For personal use only

Groundwork Commences

- Expand **systematic channel and rock chip sampling**
- Validate and replicate **historic high-grade results**
- Undertake **detailed geological and structural mapping**
- Complete **soil geochemistry programs**
- Identify and prioritise **drill targets**
- Initiate **permitting for maiden drilling**
- Progress **metallurgical testwork planning**



Fluorspar fluoresces purple under UV light.
Calcite fluoresces orange/red

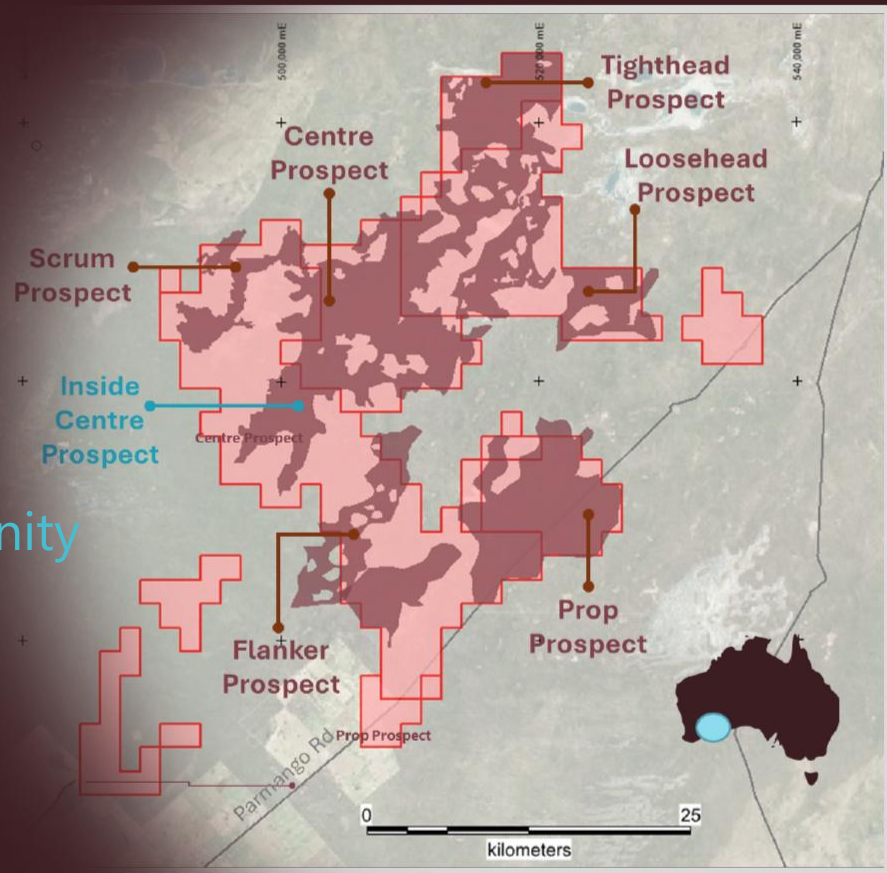
Image source: <https://www.naturesrainbows.com/post/2020/05/08/banded-fluorite-and-calcite-pure-potential-mine-la-paz-county-arizona>



For personal use only

Splinter Rock Rare Earth Project

A Strategic US Critical Mineral Opportunity



Tenements REE Clay Basins

SPLINTER ROCK REE PROJECT HIGHLIGHTS

A 100% Owned Australian Critical Minerals Project

- Strong Rare Earth Demand Fundamentals
- 682Mt at 1,338 ppm TREO JORC Resource
- High Grade Inside Centre 119Mt at 1,632ppm TREO (Indicated)
- ~75% Nd & Pr Overall Recovery
- High-quality Mixed Rare Earth Carbonate (MREC) of ~56% TREO
- High-quality Mixed Rare Earth Hydroxide (MREH) of ~59% TREO
- Superior product quality with low levels of impurities (Al, Fe, P, Si)
- Extremely low uranium and thorium content (<0.001% U + Th)
- Optimised capital and operating cost drivers
- Offtake Engagement – North America, Europe & Asia
- Positive Study Outcomes - ANSTO and CPC
- Accelerated Scale up Testing at ANSTO - 2.5t Metallurgical Core



1. Refer to [ASX Announcement Mineral Resource Estimate Doubles](#)
2. Refer to [ASX Announcement IX Improves Processing Flowsheet](#)
3. Refer to [ASX Announcement High Quality MREC produced](#)

For personal use only



RESOURCE GROWTH POTENTIAL

Upside to Towards Billions of Tonnes – Across a Tenement Holding Area of 949 km²

For personal use only

Current resource based on drilling **<10% of clay basins identified**

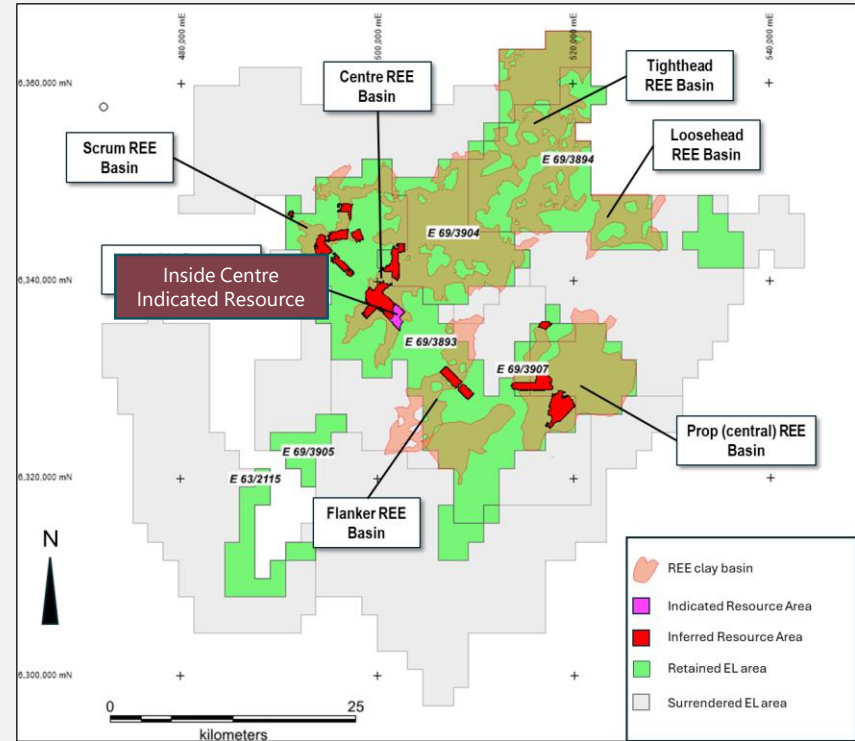
Inside Centre has **direct extensions of thick REE high-grade zones** pending further drilling

Centre Basin **Extends >30km** to the NE

Potential to exceed well beyond 1 billion tonnes

Has the best zone even been discovered ?

1. Refer to [ASX Announcement Mineral Resource Estimate Doubles](#)
2. Refer to [ASX Announcement Start of the Art Modelling Reveals Basin Extensions](#)



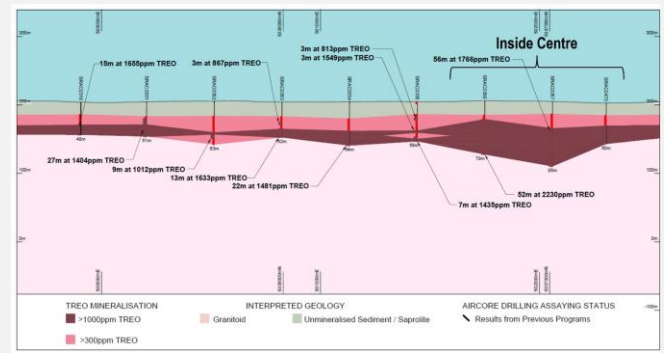
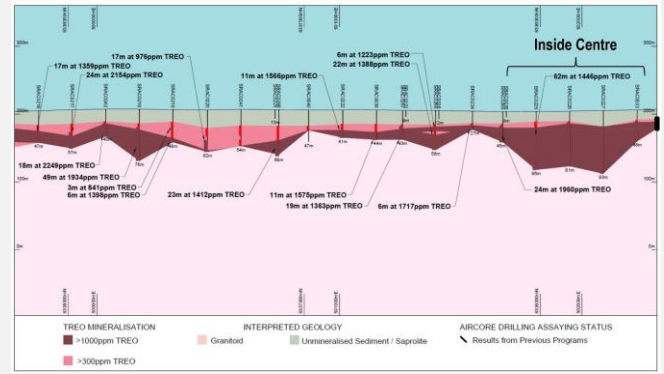
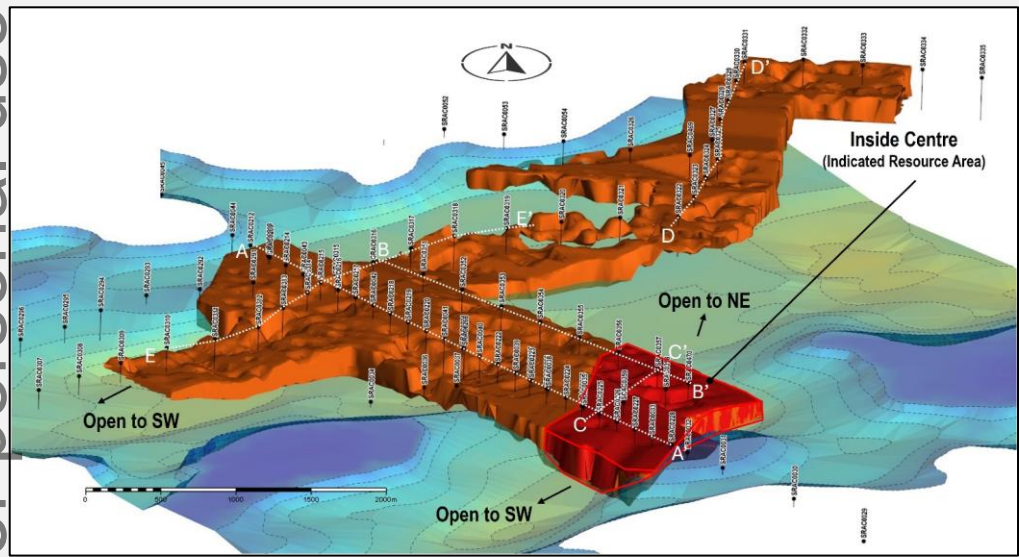


INSIDE CENTRE - A HIGH GRADE STAND OUT

Indicated MRE OF 119Mt at 1,632ppm TREO (at 1,000ppm TREO cutoff grade)

For personal use only

Inside Centre to be the focus of future works



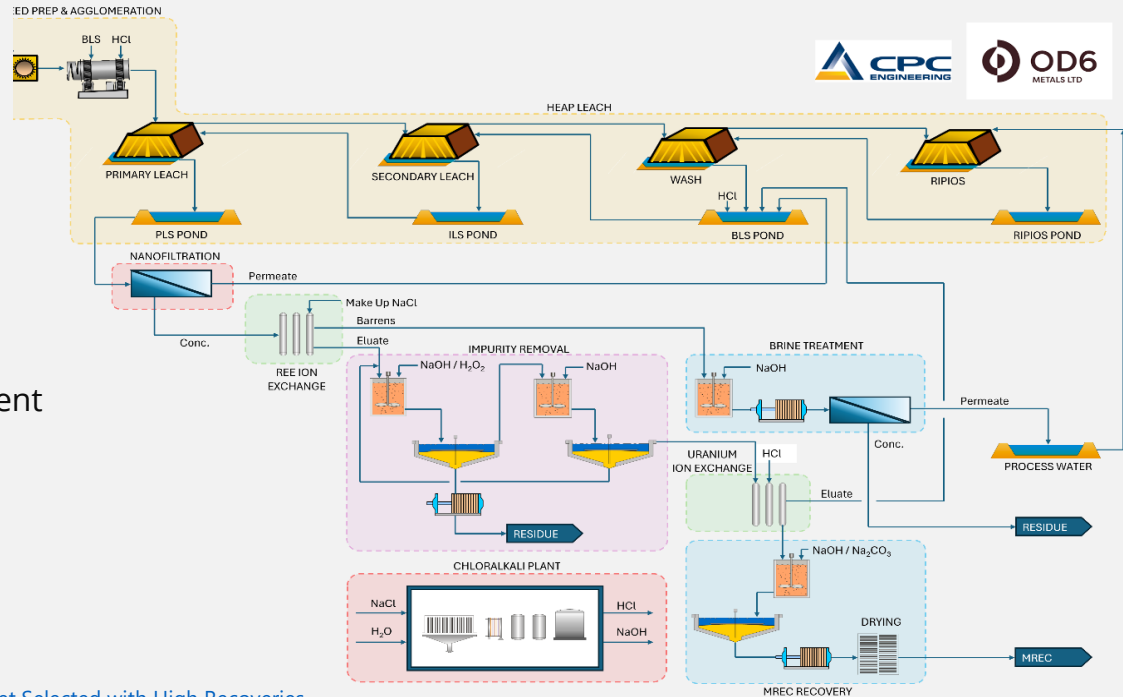
Refer to [ASX Announcement Mineral Resource Estimate Doubles](#)

INNOVATIVE PROCESSING STEPS

Simplified Processing Pathway to Produce High Quality Low Impurity Product

For personal use only

- **Simple acidic heap leach**
- **Capital intensive processing steps removed** - tanks, thickening, clay washing, solid liquid separation
- **84.5% Acid Recycling** with Nanofiltration (NF)
- **69% reduction in liquor volume** sent to Ion Exchange (IX) and Impurity Removal (IR) Circuits
- **U & Th Removed from product**



1. Refer to [ASX Announcement Innovative Process Flowsheet Selected with High Recoveries](#)
2. Refer to [ASX Announcement Nanofiltration Reduces Acid Requirements By Over 80%](#)



OUTSTANDING METALLURGICAL RESULTS

Rare Earths Recovered with Simple Heap Leach

For personal use only

- Excellent **overall Nd and Pr recovery of ~75%** inclusive of impurity removal
- **Heavy Rare Earth (Gd to Lu + Y) recoveries add significant value**
- **High quality MREC and MREH ~56-59% TREO and Low Impurity (Al, Fe, Si, U, Th)**
- **Product quality meets or exceeds global MREC and MREH benchmarks**

Inside Centre Deposit - Extraction by REE



1. Refer to [ASX Announcement Heap Leach Improves Met Recoveries](#)
2. Refer to [ASX Announcement IXI Improves Processing Flowsheet](#)
3. Refer to [ASX Announcement High Quality MREC produced](#)
4. Refer to [ASX Announcement Innovative Process Flowsheet Selected with High Recoveries](#)

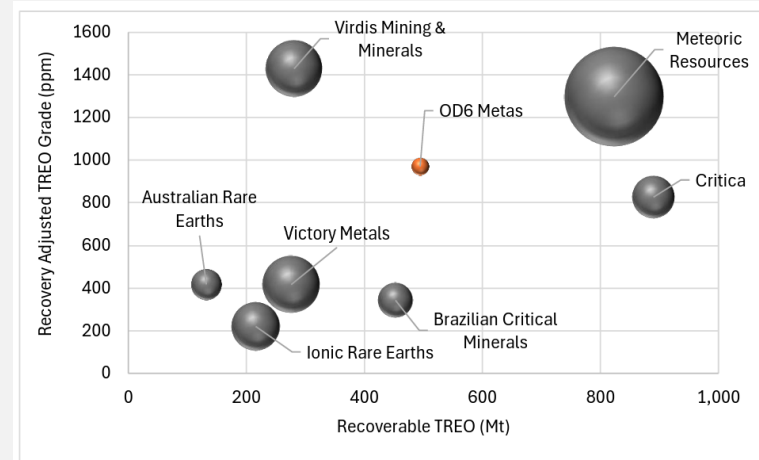
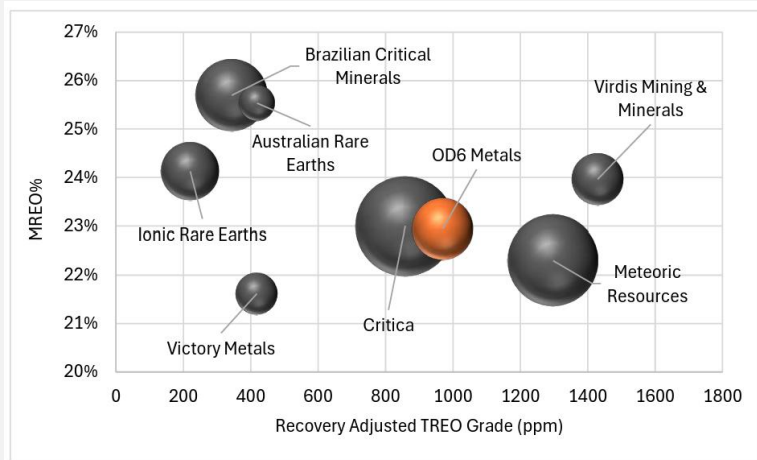


BENCHMARKING ANALYSIS BY RECOVERED TREGO

For personal use only

East Coast Research analysis highlights OD6 outperforms many of its peers

"Recovery-Adjusted TREGO Grade aligns resource grade with actual extractability, offering a more realistic view of grade quality once metallurgical performance is taken into account."



Recovery-Adjusted TREGO Grade (ppm) on the x-axis, MREO% on the y-axis, and **bubble size representing total recoverable TREGO tonnage.**

Bubble size reflecting enterprise value, the x-axis displays Recoverable TREGO (Mt), the y-axis shows Recovery-Adjusted TREGO Grade (ppm).

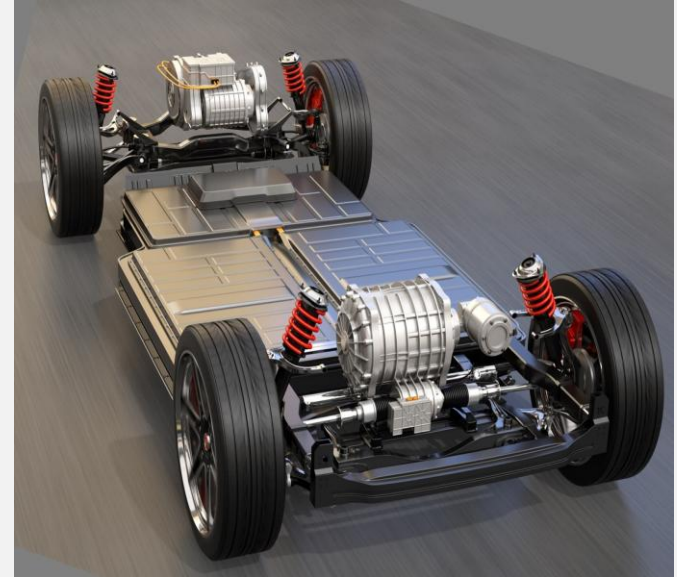
1. Refer to [East Coast Research OD6 Metals 9 December 2025](#)

NEXT STEPS AT SPLINTER ROCK

Advanced Metallurgical Testwork and Studies

For personal use only

- **ANSTO Testwork Scale Up:**
 - **Heap leach Optimisation:** Heap Leach duration and kinetics, Acid strength and consumption, Counter current heap configuration, Particle agglomeration methodology
 - **Impurity Removal Verification:** Nanofiltration (NF) acid recovery, Ion Exchange (IX) selectivity, two stage Impurity Removal (IR) optimisation
 - **Bulk MREC and MREH Production:** Precipitation to produce >1 kg of MREC and/or MREH for customer qualification, offtake discussions, and to assess commercial payability options
- **Mining Study Commenced:** Inside Centre Deposit pit shells, stripping ratios, mine scheduling and preliminary mining costs
- **Engagement with potential offtake partners**
- **Engagement with government and potential financing partners**
- **Review Selective Nd, Pr, Tb and Dy Oxide Production Potential**



1. Refer [ASX Announcement – Innovative Process Flowsheet Selected with High Recoveries at Splinter Rock](#)



For personal use only

Gulf Creek Copper Project

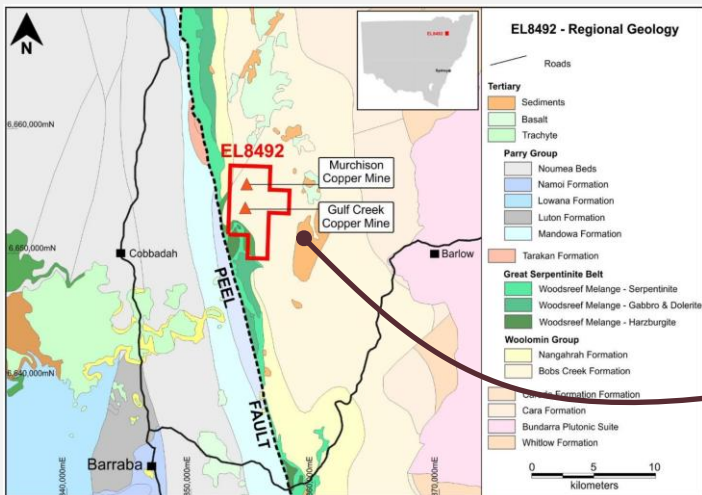
Historic High-Grade Copper-Zinc Mine (1896-1912)



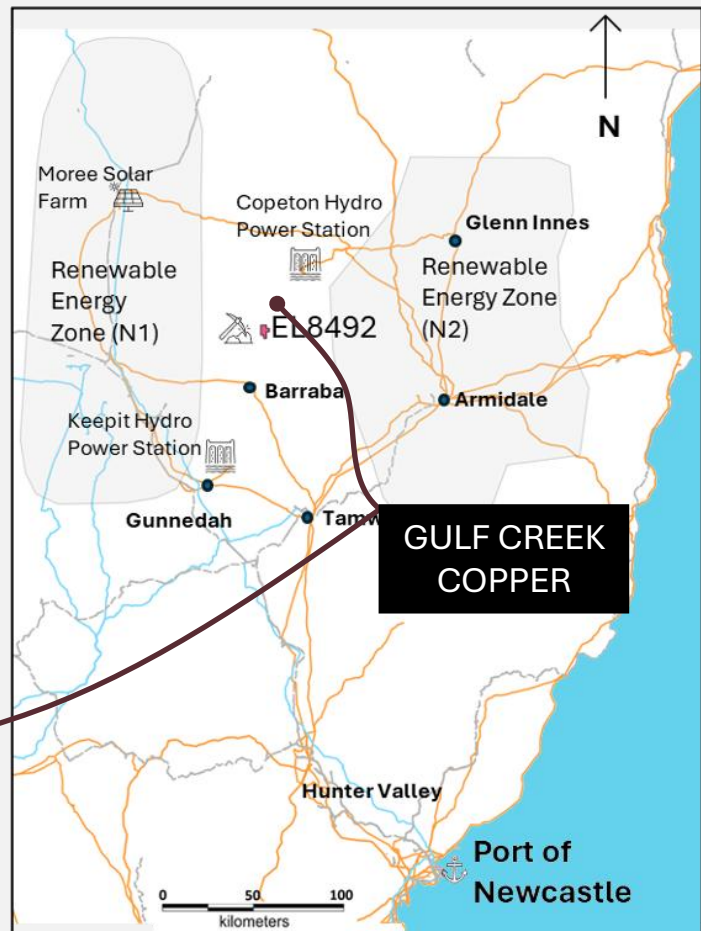
GULF CREEK COPPER

Perfectly Positioned

- Tier 1 Location: Northern NSW, Australia
- Ideally located with road access to Port of Newcastle
- Situated between two renewable energy zones (REZ)
- 83km from the nearest gas pipeline and rail lines



**23.75 km²
Tenement
Area**



For personal use only



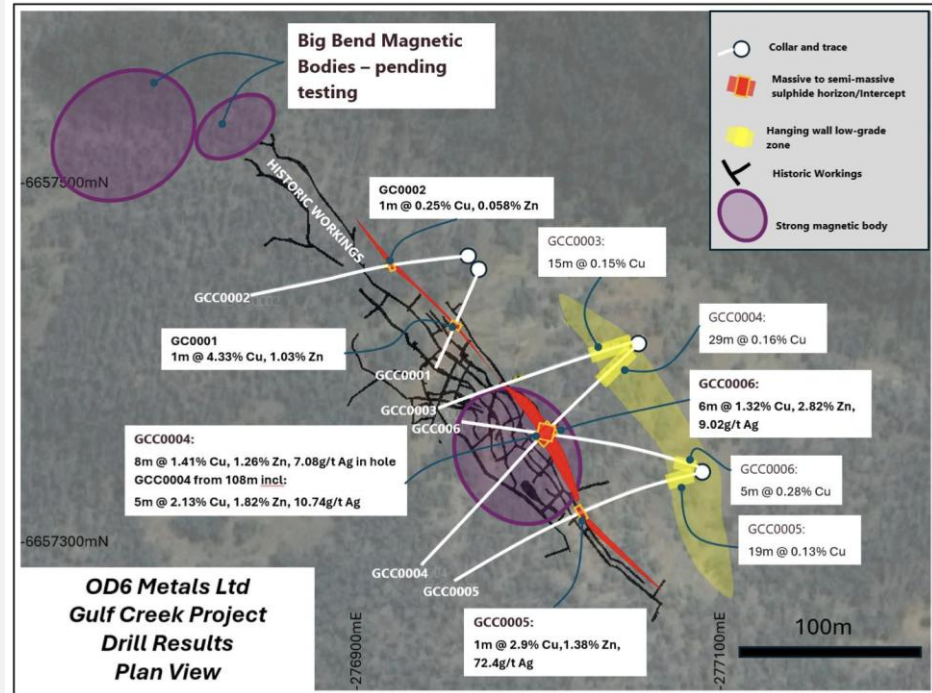
EARLY PHASE DRILLING CONFIRMS HIGH-GRADE COPPER

Exploration Targeting Methodology Continuing to be Optimised

For personal use only

- **Successful 6 hole maiden drill program confirmed high-grade copper**
 - 8m @ 1.41% Cu, 1.26% Zn, 7.08g/t Ag
 - 6m @ 1.32% Cu, 2.82% Zn, 9.02g/t Ag
 - 1m @ 4.33% Cu, 1.02% Zn, 2.5g/t Ag
- **Strong relationship between magnetism and massive sulphide mineralisation**
- **Phase 2 drilling tested repeat structures identified by geophysics modelling**
- **Downhole EM** and magnetics has identified follow up targets for 2026

Refer to [ASX Announcement High Grade Copper Massive Sulphides](#)
 Refer to [ASX Announcement Down Hole EM Survey Commences at Gulf Creek](#)



Plan view of Phase 1 drilling

HIGH-GRADE COPPER CONFIRMED

Very elevated grades (**up to 4.6% Cu**) within hole GC0004

For personal use only



Chip Trays from Hole GC0004 showing the classic VMS stratigraphic succession from hanging wall sediments, jaspilite, disseminate to semi-massive to massive sulphides to footwall basalts.

Refer to [ASX Announcement High Grade Copper Massive Sulphides](#)



EM SURVEY IDENTIFIES OFF HOLE CONDUCTOR

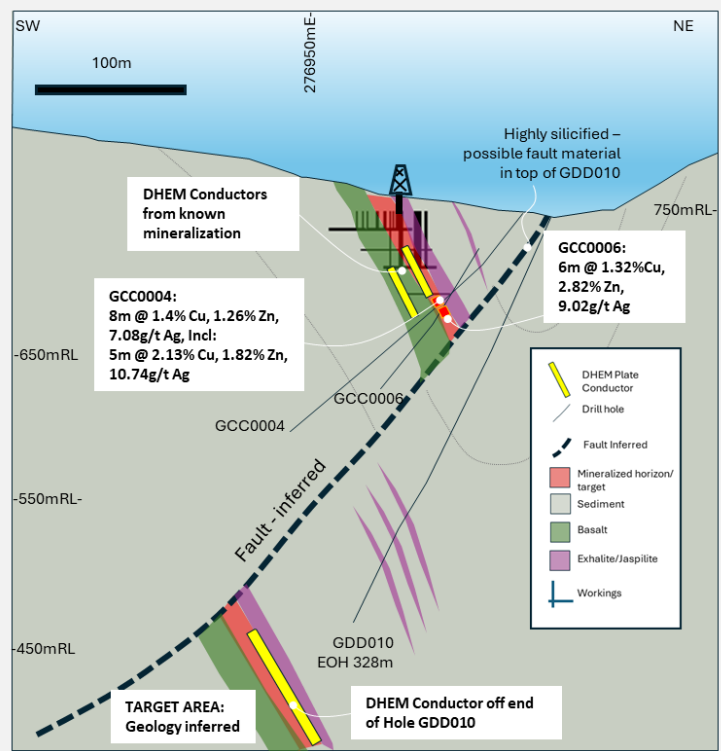


For personal use only

STRONG CONDUCTOR – COMPELLING NEW DRILL TARGET

- DHEM surveying results complete across six drill holes using four surface EM loops
- **Strong conductor identified approximately 75m beyond the end of hole GDD010**
- Geological reinterpretation indicates a **potential fault offset** of historic high-grade lodes mined
- DHEM results at the **Northwest Target indicates a possible additional conductor**
- **Drill assay results pending** from the recent diamond drilling program
- OD6 fully permitted for additional 25 holes at Gulf Creek follow up drilling

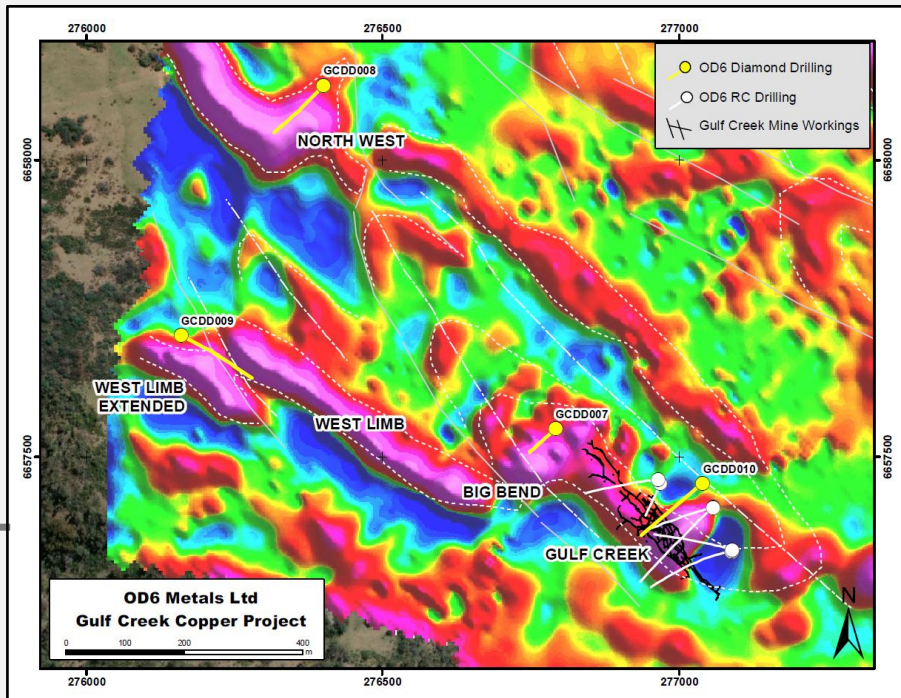
Refer to [ASX Announcement Down Hole Electromagnetic Survey Identifies off Hole Conductor](#)



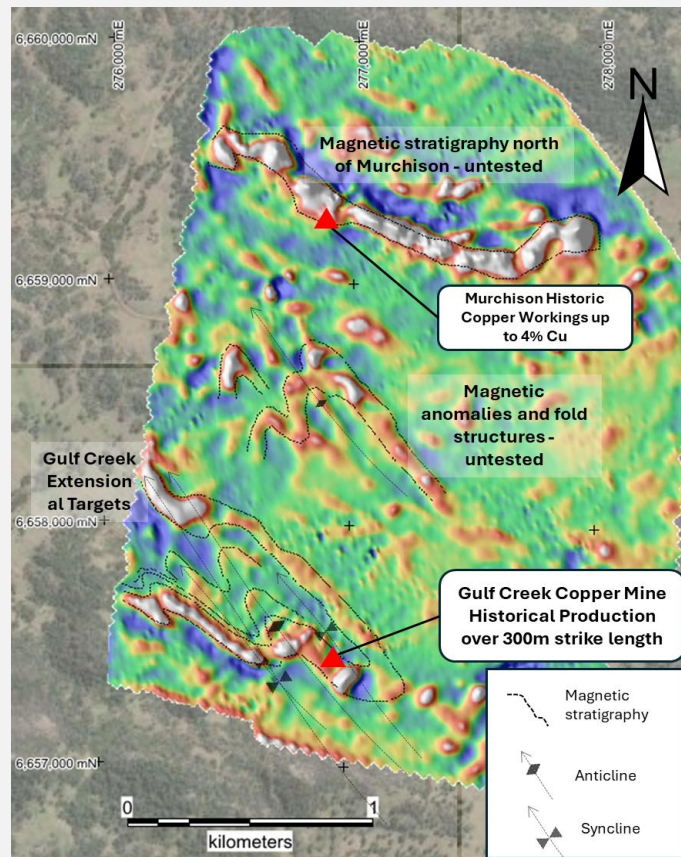
SCALE POTENTIAL

10km Target Horizon including Historic Murchison Mine

For personal use only



Refer [ASX Announcement New Potential VMS Copper Targets at Gulf Creek](#)



GULF CREEK COPPER PROJECT

HIGHLIGHTS & NEXT STEPS

A 100% Owned Australian Critical Minerals Project

- Record copper prices supported by strong market fundamentals
- Copper up to 4.6% Confirmed in Phase 1 Drilling
- High Grade Production History (Up to 12% Cu)
- Multiple High Priority Targets
- >3km to 10km of VMS target horizon
- Down Hole EM (DHEM) survey completed have refined the geophysical model and identified targets for follow-up work
- Continued drilling during 2026
- 25-hole, ~7,500m Drill Program Permitted
- Assays Results from Recent Drilling Pending



For personal use only



CONTACT US

CONTACT US

REGISTERED OFFICE

c/o LCP Group
Level 1, 1 Alvan Street
Subiaco WA 6010
Phone: +61 8 6189 8515
Email: info@od6metals.com.au

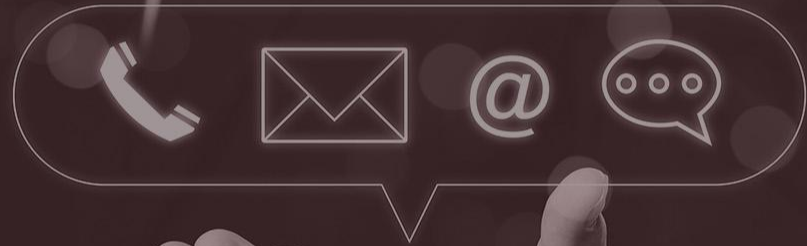
SHARE REGISTRY

Computershare Investor Services
Level 11, 172 St Georges Tce
Perth WA 6000

www.od6metals.com.au
ASX:OD6

LUCAS ROBINSON

Investor Relations
lucas@corporatetorytime.com
+61 408 228 889



SPLINTER ROCK MINERAL RESOURCE ESTIMATE

At 1,000ppm Cut Off Grade

For personal use only



**GLOBALY
SIGNIFICANT
HIGH GRADE
CLAY HOSTED
MINERAL
RESOURCE
ESTIMATE (MRE)**

Prospect	Category	Tonnes (Mt)	TREO (ppm)	Pr ₆ O ₁₁ (ppm)	Nd ₂ O ₃ (ppm)	Tb ₄ O ₇ (ppm)	Dy ₂ O ₃ (ppm)	MagREO (ppm)	MagREO (% of TREO)
Inside Centre	Indicated	119	1,632	79	271	2	12	366	22.4%
Centre	Inferred	276	1,342	65	228	3	15	310	23.1%
Centre NW	Inferred	21	1,255	65	227	3	14	309	24.6%
Scrum	Inferred	126	1,228	58	210	3	15	285	23.2%
Prop	Inferred	94	1,160	53	190	2	13	259	22.3%
Flanker	Inferred	45	1,250	59	212	3	16	290	23.2%
Total	I+I	682	1,338	64	226	3	14	307	22.9%

Refer to [ASX Announcement Mineral Resource Estimate Doubles](#)

TREO (Total Rare Earth Oxide) = La2O3 + CeO2 + Pr6O11 + Nd2O3 + Sm2O3 + Eu2O3 + Gd2O3 + Tb4O7 + Dy2O3 + Ho2O3 + Er2O3 + Tm2O3 + Yb2O3 + Lu2O3 + Y2O3

MagREO (Magnet Rare Earth Oxide) = Nd2O3 + Pr6O11 + Tb4O7 + Dy2O3

% Magnet REO = (MagREO / TREO)*100

For full Mineral Resource estimate details refer to OD6 ASX announcement 29 May 2024, "Mineral Resource Estimate Doubles". OD6 is not aware of any new information or data that materially affects the Mineral Resource estimate included in that release. All material assumptions and technical parameters underpinning the Mineral Resource estimate in that release continue to apply and have not materially changed.

