



**Mount Hope Mining  
Limited  
ACN: 677 683 055**

**Interim Financial  
Report for the  
Half Year Ended  
31 December 2025**

**MOUNT HOPE MINING  
LIMITED**

---

**CONTENTS**

	Page
Contents	2
Corporate Directory	3
Directors' Report	4
Auditor's Independence Declaration	17
Condensed Consolidated Statement of Profit or Loss and Other Comprehensive Income	18
Condensed Consolidated Statement of Financial Position	19
Condensed Consolidated Statement of Cash Flows	20
Condensed Consolidated Statement of Changes in Equity	21
Notes to the Financial Statements	22
Directors' Declaration	26
Independent Auditor's Report	27

For personal use only

**MOUNT HOPE MINING  
LIMITED**

---

**CORPORATE DIRECTORY**

**Directors**

**Non-Executive Chairman**  
Mr Ben Phillips

**Managing Director**  
Mr Fergus Kiley

**Non-Executive Director**  
Mr Todd Williams

**Company Secretary**  
Mr Paul Kiley

**Registered and Principal Office**

Ground Floor  
136 Stirling Highway  
Nedlands Western Australia  
6009

Telephone : +61 (8) 6187 5906

**Auditors**

Hall Chadwick WA Audit Pty Ltd  
283 Rokeby Road  
Subiaco Western Australia 6008

**Bankers**

Commonwealth Bank Limited  
2, Shop 4-7/18 St Quentin Ave,  
Claremont WA 6010

For personal use only

# MOUNT HOPE MINING LIMITED

---

## DIRECTOR'S REPORT

The Directors present their report together with the interim consolidated financial statements of Mount Hope Mining Limited (referred to hereafter as "the Company") for the half year ended 31 December 2025.

### Current Directors

The name and details of the Company's Directors in office during the financial year and until the date of this report are as follows. Directors were in office for the entire half year unless stated otherwise.

Mr Ben Phillips - Non-Executive Chairman  
Mr Fergus Kiley – Managing Director  
Mr Todd Williams - Non-Executive Director

#### **Mr Ben Phillips** **Non-Executive Chairman (Appointed 5 July 2024)**

Ben Phillips has over 15 years' experience in commercial negotiations with a broad spectrum of industries including Oil and Gas, Resources, Medical technology, SaaS and Defence. He advises departments ranging from R&D and exploration through to production, commercialisation and sales.

He was previously Non-Executive Director at Bronson Group Ltd and subsequently Mandrake Resources Ltd.

#### **Current ASX Listed Directorships**

Many Peaks Minerals Limited  
Norfolk Metals Limited

#### **Mr Fergus Kiley** **Managing Director (Appointed 3 July 2024)**

Fergus Kiley brings more than 15 years' experience in capital markets and the resources sector, with extensive knowledge of business development, project finance, geological and technical project evaluation across all asset lifecycle stages.

He was previously the business development lead at Wyloo Pty Ltd, a resources investment company owned by Andrew Forrest where he assisted in a multitude of transactions, including the CAD \$616.9 million hostile takeover of Noront Resources.

Formerly the General Manager Operations with Nico Resources Ltd, since its inception in January 2022 and successfully delivering the AUD\$3.34bn Wingellina Pre-Feasibility Study.

#### **Current ASX Listed Directorships**

Grand Gulf Energy Ltd

#### **Mr Todd Williams** **Non-Executive Director (Appointed 22 August 2024)**

Todd Williams is an exploration geologist with a Bachelor of Science degree.

From 2015 to his appointment as Managing Director of Unico Silver Limited, Todd Williams was the founder and principal of Circum Pacific Pty Ltd, a private Australian based but South American focused gold explorer. During this time, he managed the development of greenfields projects in Colombia and Argentina, including the Company's Santa Cruz and Rio Negro projects.

#### **Current ASX Listed Directorships**

Unico Silver Limited  
Orpheus Uranium Ltd

# MOUNT HOPE MINING LIMITED

## About the Mount Hope Project

Mount Hope Mining Limited (ASX: **MHM**) is an Australian explorer focused on building a strong portfolio of growth assets in the prolific southern Cobar Basin, New South Wales. The Company's core landholding, the **Mount Hope Project**, comprises ~422km<sup>2</sup> in the Cobar Super Basin and is strategically positioned on the eastern margin of the Silurian to early Devonian **Mt Hope Trough**, straddling the **Sugarloaf, MS2 and Scotts Craig** basin-bounding fault structures.

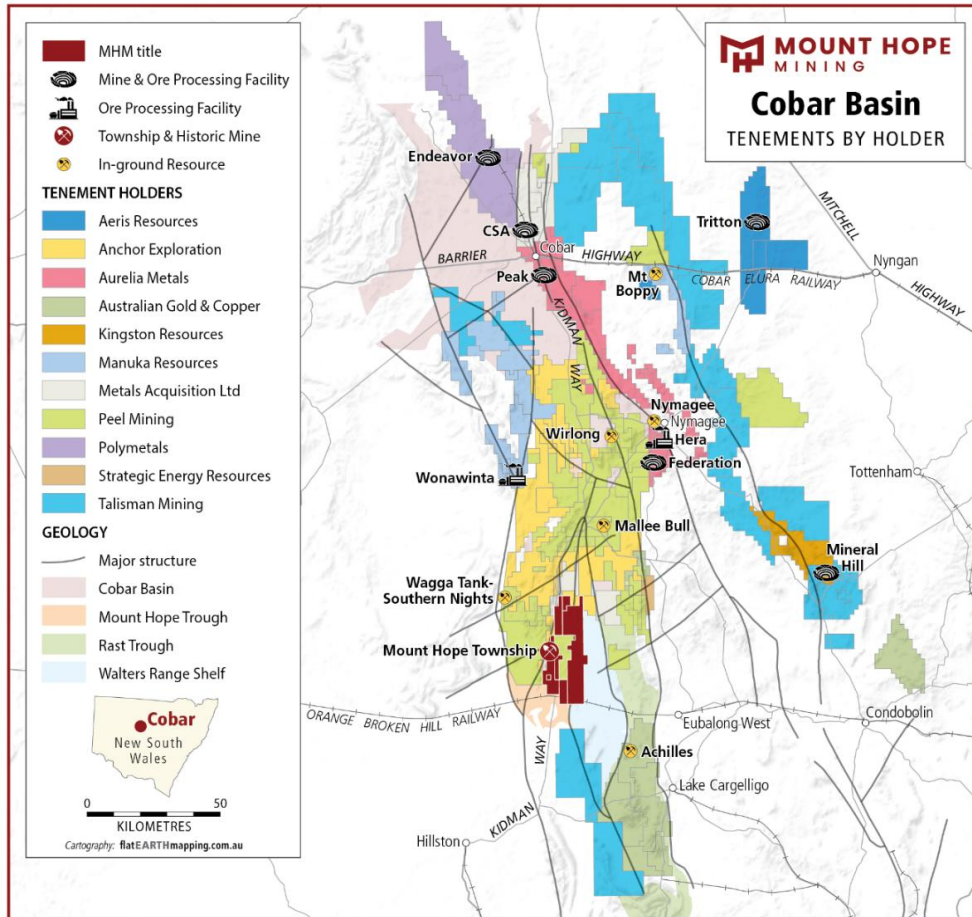


Figure 1: Mount Hope Project Location Map

The Company's flagship project is the 100%-owned **Mt Solitary Gold prospect**, where a JORC (2012) **Exploration Target** has been defined as **1.32–1.87Mt at 1.0–1.35g/t Au for 42.5–81.4koz Au\***.

**\*Cautionary Statement: The potential quantity and grade of the Exploration Target are conceptual in nature. As such, there has been insufficient exploration to estimate a Mineral Resource, and it is uncertain whether further exploration will result in a Mineral Resource. The Exploration Target has been prepared in accordance with the JORC Code (2012).**

Mt Solitary sits within Mount Hope Mining's expanded railway **MS2 Gold Corridor**, a district-scale ~7.5km mineralised trend with multiple targets and strong upside for repeat gold discoveries along strike and at depth.

The Company also holds a broader portfolio of **Cobar-style polymetallic (Cu–Au–Ag–Pb–Zn)** exploration targets across its 422km<sup>2</sup> landholding.

Mount Hope Mining's strategy is **systematic and drill-led**, with an immediate focus on growing ounces and geological confidence at Mt Solitary.

Simultaneously, the Company will be testing and maturing targets along the MS2 corridor, while advancing the highest-ranked polymetallic targets through staged geophysics, geochemistry and drilling to deliver discoveries and resource growth.

For personal use only

# MOUNT HOPE MINING LIMITED

## Review of Operations

During the half-year ended 31 December 2025, Mount Hope Mining progressed its 100%-owned Mt Hope Project (Figure 2) in the southern Cobar Basin through target definition, permitting and drilling, with a primary focus on advancing the Mt Solitary gold prospect and building a broader pipeline of Cobar-style polymetallic targets. The Company defined and prioritised multiple drill-ready targets, secured approvals for the maiden drilling program, and completed initial scout drilling across several greenfields prospects while reporting high-grade gold results from the Phase 1 program at Mt Solitary.

The Company also strengthened its balance sheet during the period through completion of a \$1.23 million placement to support ongoing drilling and regional exploration activities.

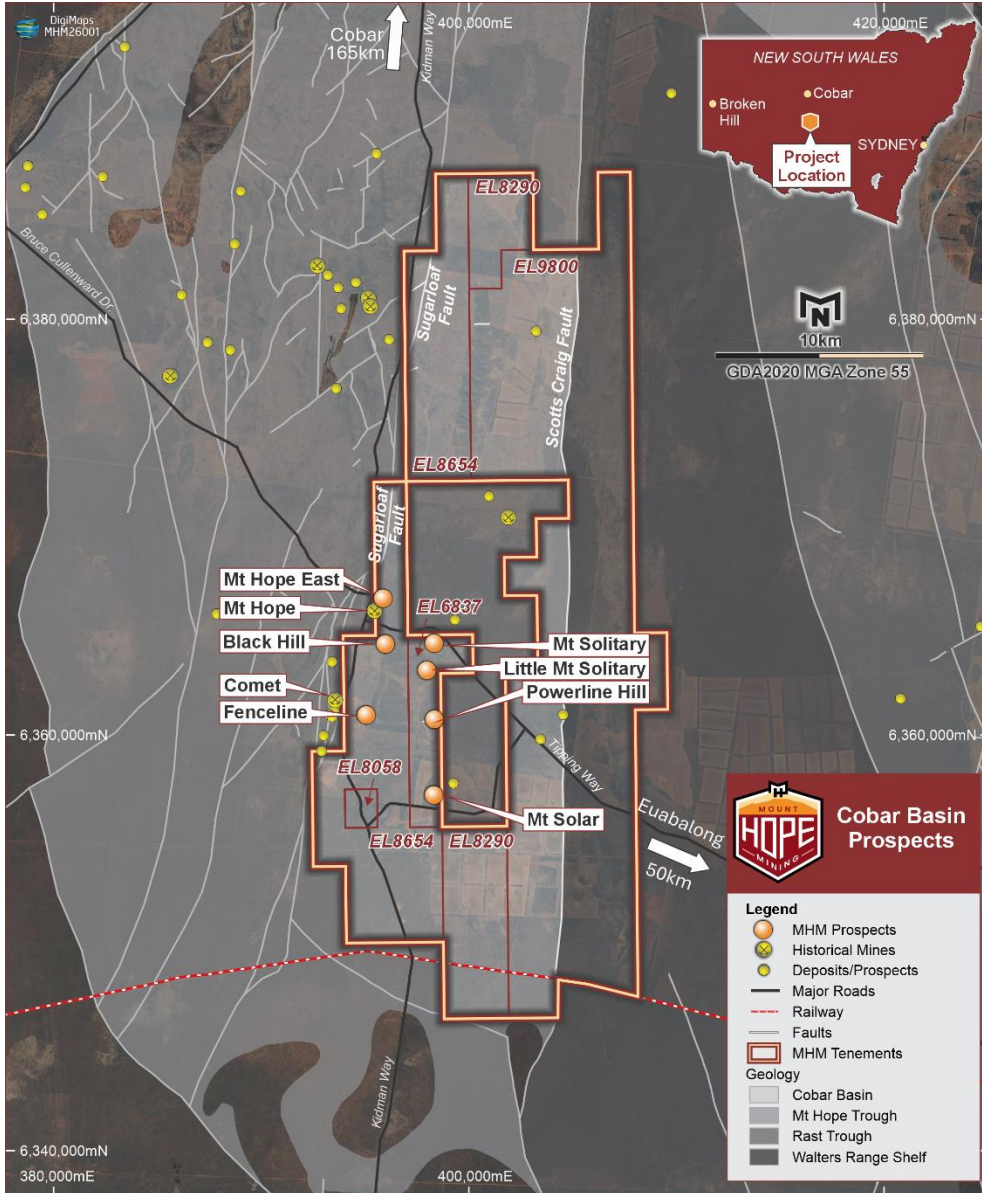


Figure 2: Mt Hope Project location and prospect map (half-year period)

## Mt Solitary

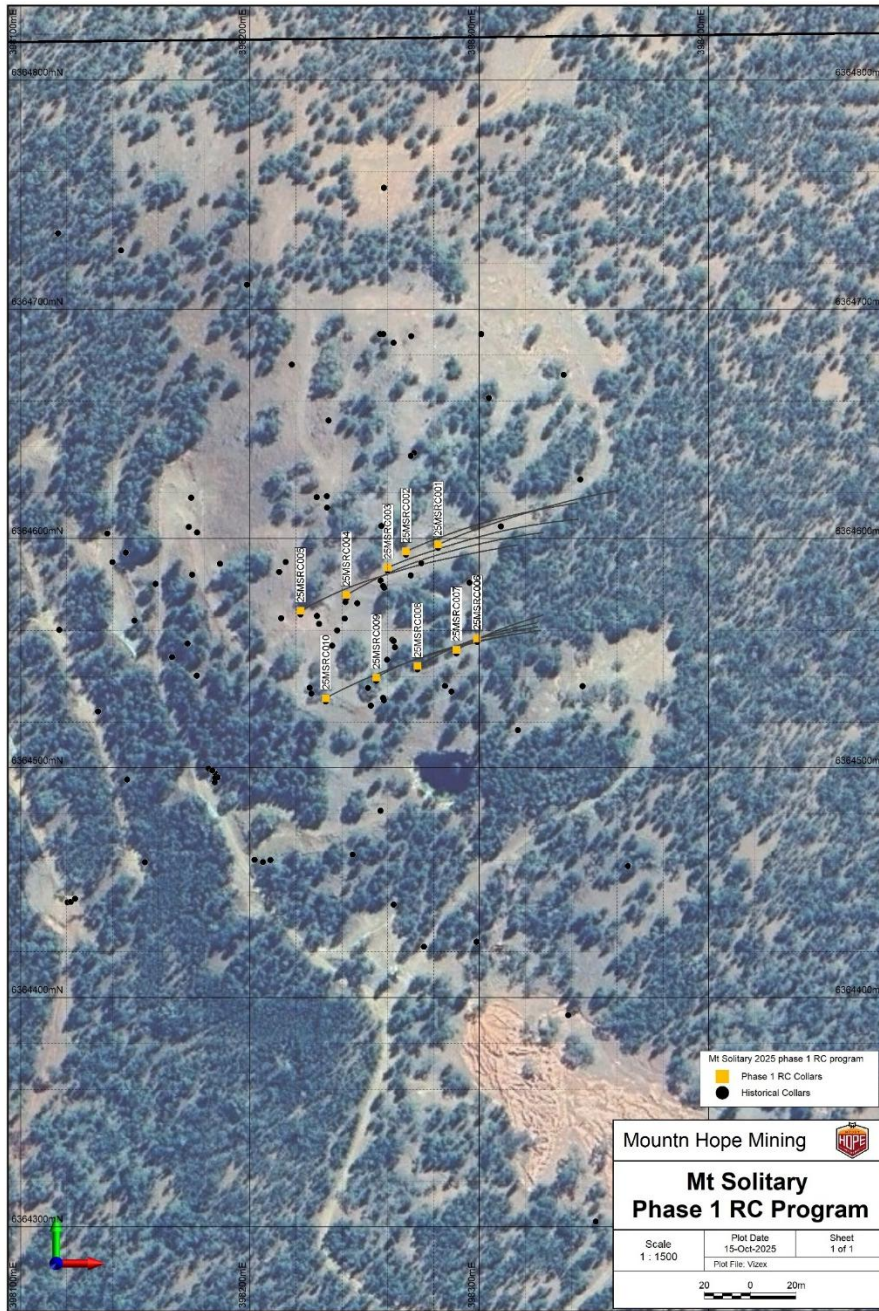
The Company's principal operational focus during the half-year was Mt Solitary, where exploration activities were directed toward confirming and extending high-grade gold mineralisation and advancing the prospect toward a resource-definition stage. Phase 1 drilling at Mt Solitary comprised 10 reverse circulation (RC) holes for 1,236 metres completed on two parallel fences (Figure 3), and returned significant high-grade gold mineralisation, including a standout intercept of 19 metres at 4.5 g/t Au from

For personal use only

**MOUNT HOPE MINING  
LIMITED**

39 metres in hole 25MSRC004.

For personal use only



*Figure 3: Mt Solitary Phase 1 drill collar plan and sections*

The Phase 1 program was designed to validate historical results and support development of a structurally driven geological model for the prospect, and the Company reported that the program was successful in achieving these objectives.

In parallel, the Company continued to review historical drilling to inform target definition down-plunge and along strike, which underpinned planning for follow-up drilling aimed at extending the mineralised envelope and progressing toward a future mineral resource estimate.

In December 2025, the Company commenced its planned Phase 2 RC drilling program at Mt Solitary (Figure 4). Phase 2 comprises up to approximately 2,650 metres of RC drilling and is designed to test extensions to high-grade mineralisation down-plunge and along strike, refine the evolving structural and geological model, and advance Mt Solitary toward a resource-definition stage.

For personal use only

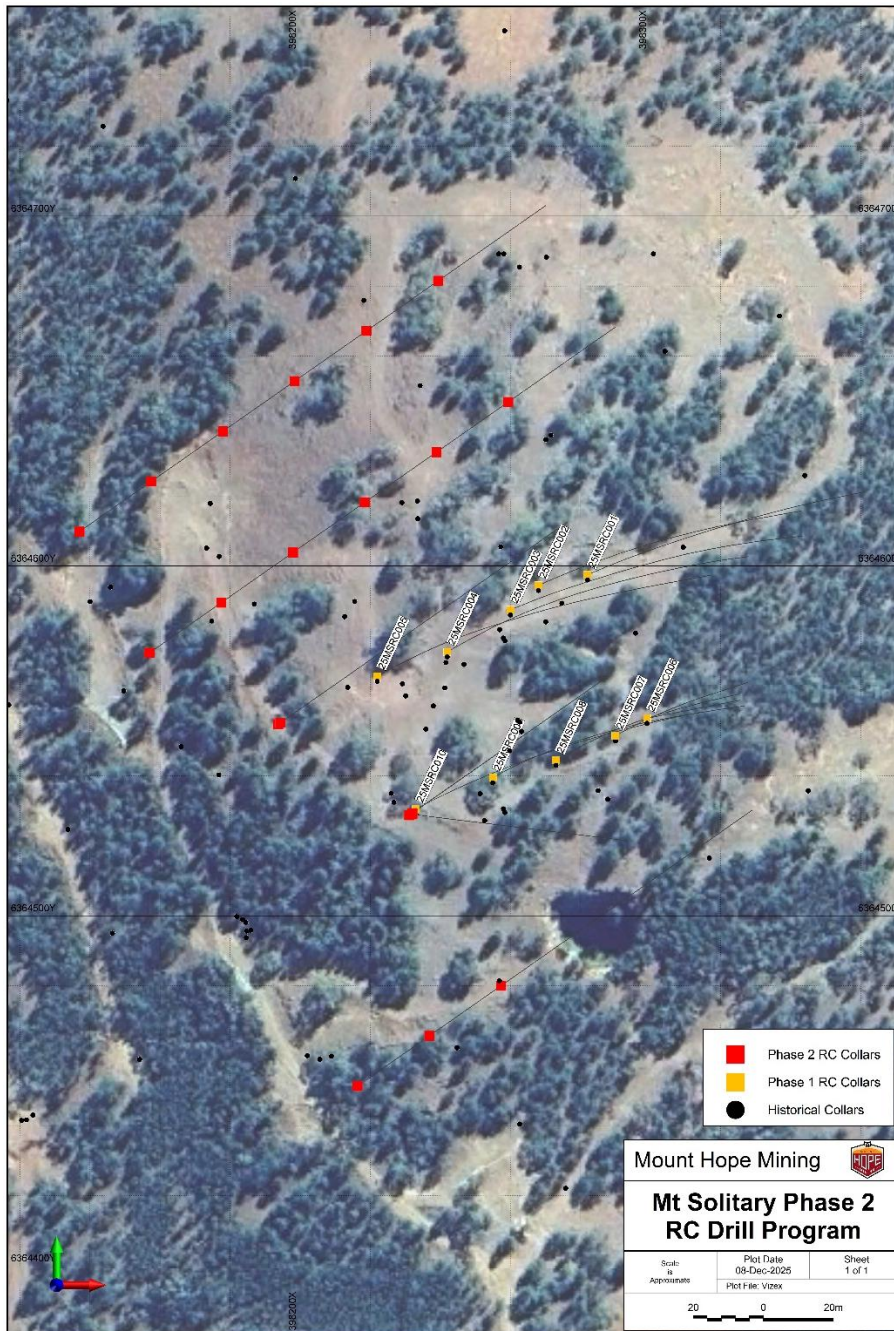
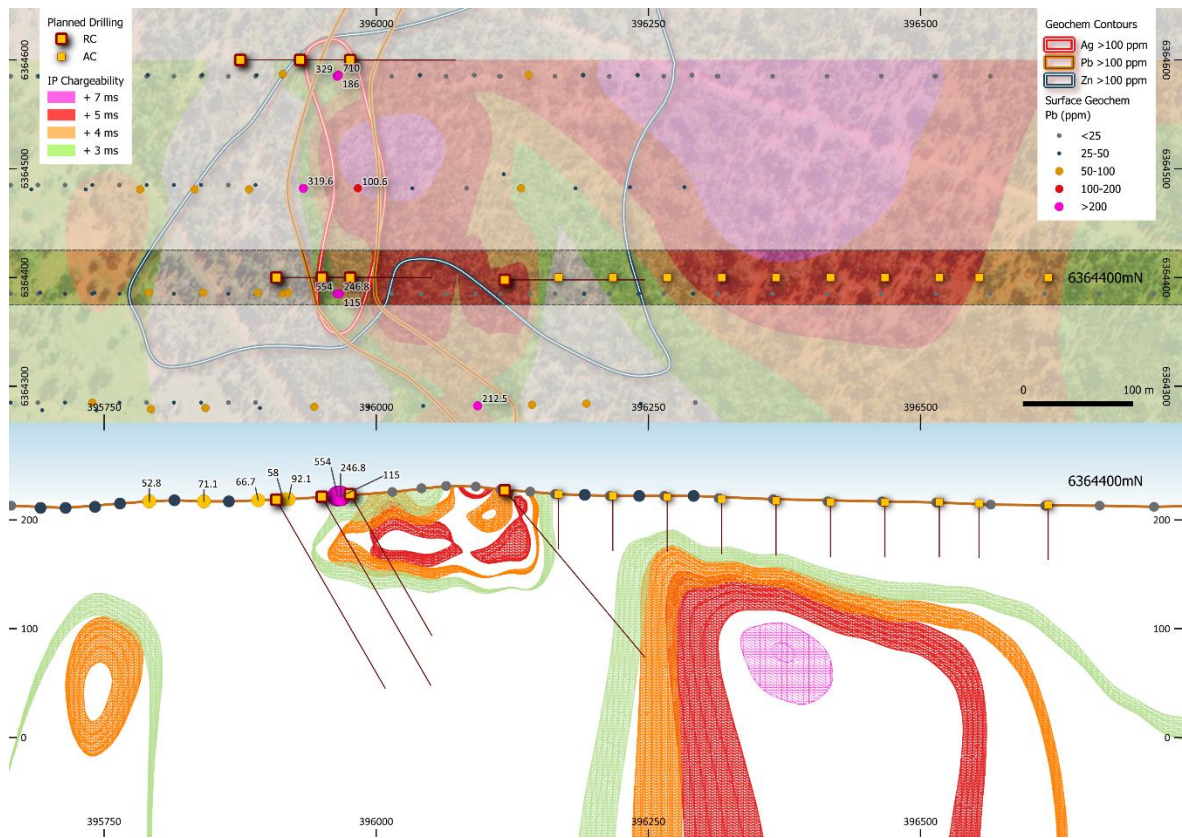


Figure 4: Mt Solitary Phase 2 planned drill collars / planned holes

### Black Hill

During the half-year, Black Hill progressed as a greenfields Cobalt-style polymetallic target (Figure 5), supported by a combination of geochemical and geophysical datasets and incorporated into the Company's maiden scout drilling activities. Assay results were reported for a portion of the maiden scout drilling completed across Blue Heeler, Black Hill and Mt Hope East, which totalled 22 holes for 1,688 metres, comprising 6 RC holes for 1,188 metres and 16 aircore holes for 500 metres.

**MOUNT HOPE MINING  
LIMITED**



*Figure 5: Black Hill location map and drill collar plan*

At Black Hill, anomalous lead-zinc-silver intervals were intersected; however, no economically significant intercepts were recorded during the initial scout program. The Company noted that this outcome may indicate proximity to a potentially higher-grade portion of a mineralised system nearby and that the targeted geophysical resistivity anomalies remain unresolved, with further geological and geophysical review planned.

**Mt Hope East**

Mt Hope East was advanced during the half-year as part of the Company's broader portfolio of Cobalt-style polymetallic opportunities within the Mt Hope Project (Figure 6). Scout drilling formed part of the initial greenfields drill testing completed across Blue Heeler, Black Hill and Mt Hope East, with total drilling for those three prospects reported as 22 holes for 1,688 metres.

While the initial program did not deliver significant intercepts at Mt Hope East, the drilling provided early-stage geological information to support ongoing assessment and target refinement.

For personal use only

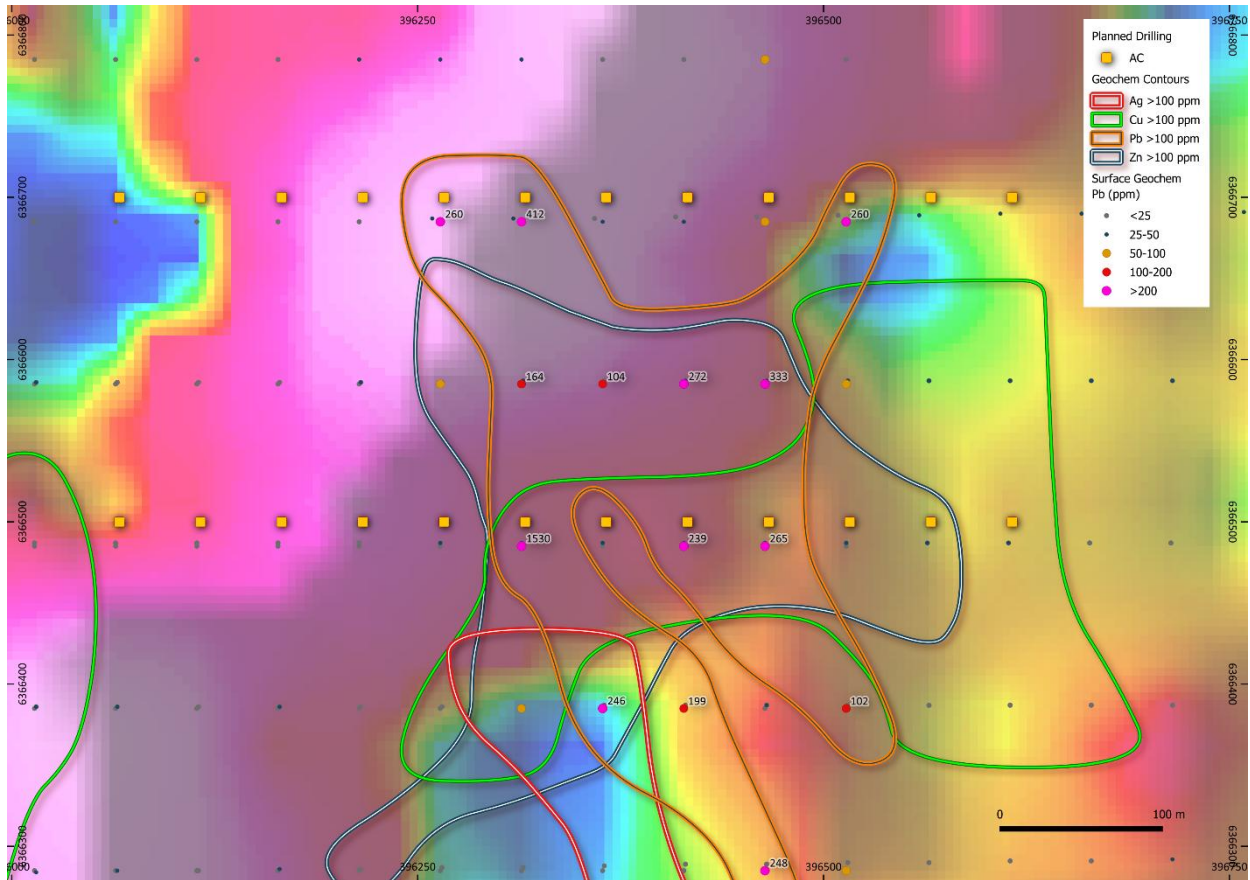


Figure 6: Mt Hope East location map and drill collar plan

## Blue Heeler

Blue Heeler was progressed during the half-year as a priority polymetallic target and was included in the Company's initial greenfields drill testing (Figure 7). Drill results reported for the combined Blue Heeler, Black Hill and Mt Hope East scout drilling program indicated that, while no significant intercepts were achieved, anomalous zones and disseminated sulphides were observed, and the Company remained positive on the prospectivity of Blue Heeler. In particular, the Company noted that drilling at Blue Heeler clearly intersected the sedimentary/volcanic contact, which is considered a primary setting for volcanogenic massive sulphide (VMS) style mineralisation.

For personal use only

For personal use only

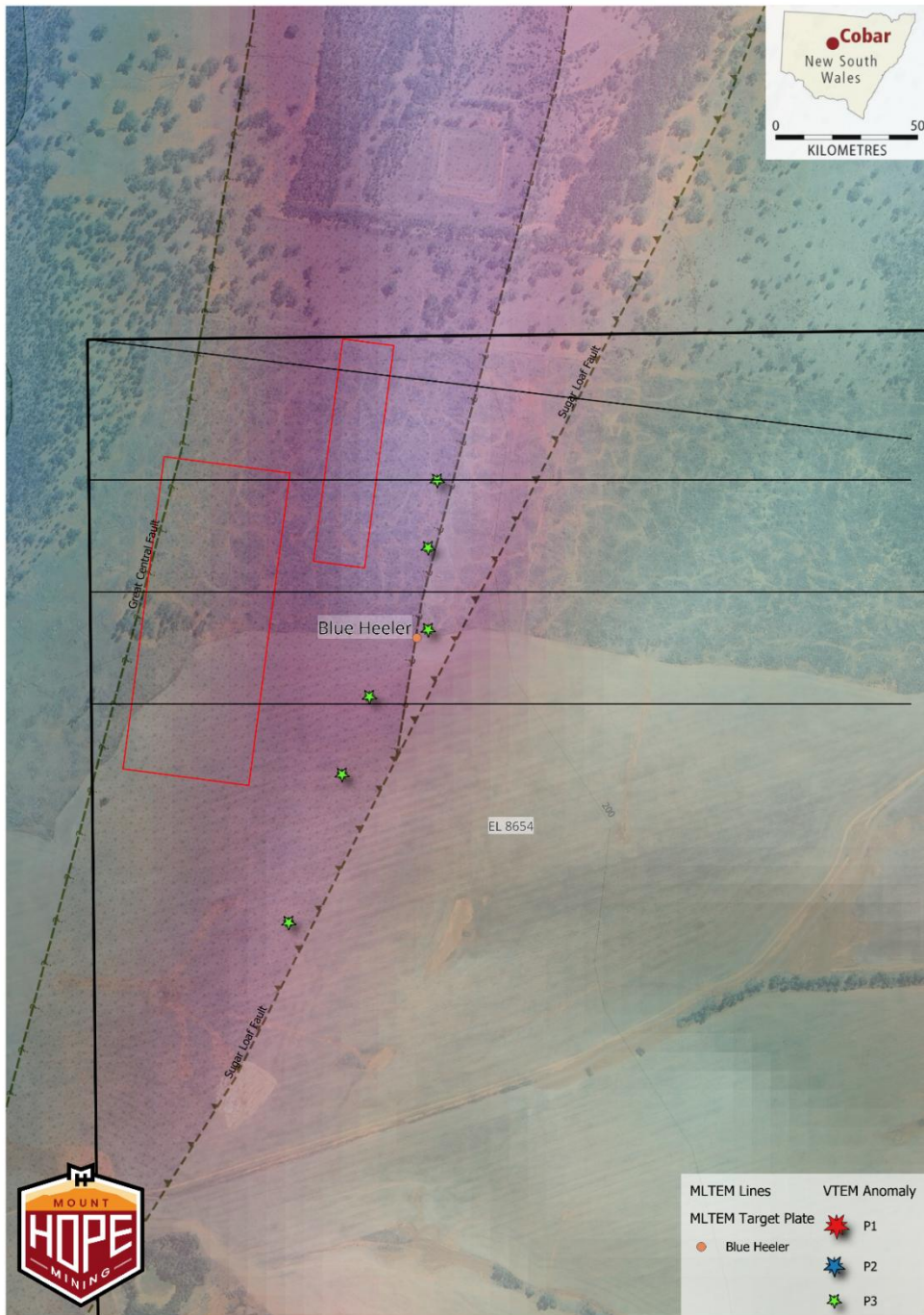


Figure 7: Blue Heeler MLTEM target plates

### Polymetallic Exploration Portfolio

During the half-year, the Company continued to develop and prioritise targets across its broader polymetallic exploration portfolio, including electromagnetic targets defined from Moving Loop Transient Electromagnetic (MLTEM) surveying at the Fenceline and Mt Solar prospects (Figure 8).

# MOUNT HOPE MINING LIMITED

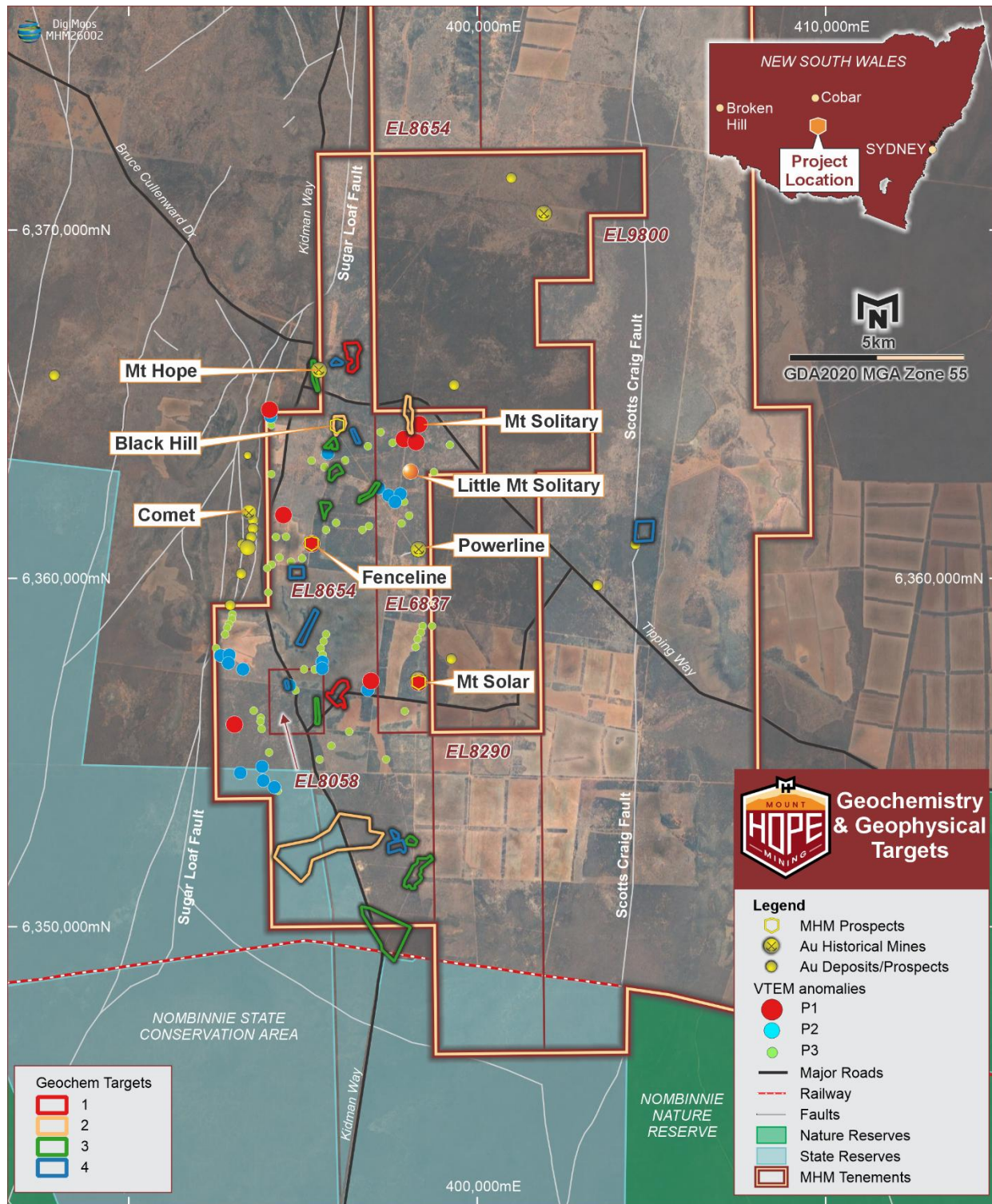


Figure 8: Polymetallic portfolio prospect location map

The Fenceline target is located approximately 5 kilometres south of the historic Mt Hope copper mine/town and is characterised by a strong conductive response, with the MLTEM survey defining a conductor reported at 1,170 Siemens (Figure 9).

For personal use only

MOUNT HOPE MINING  
LIMITED

For personal use only

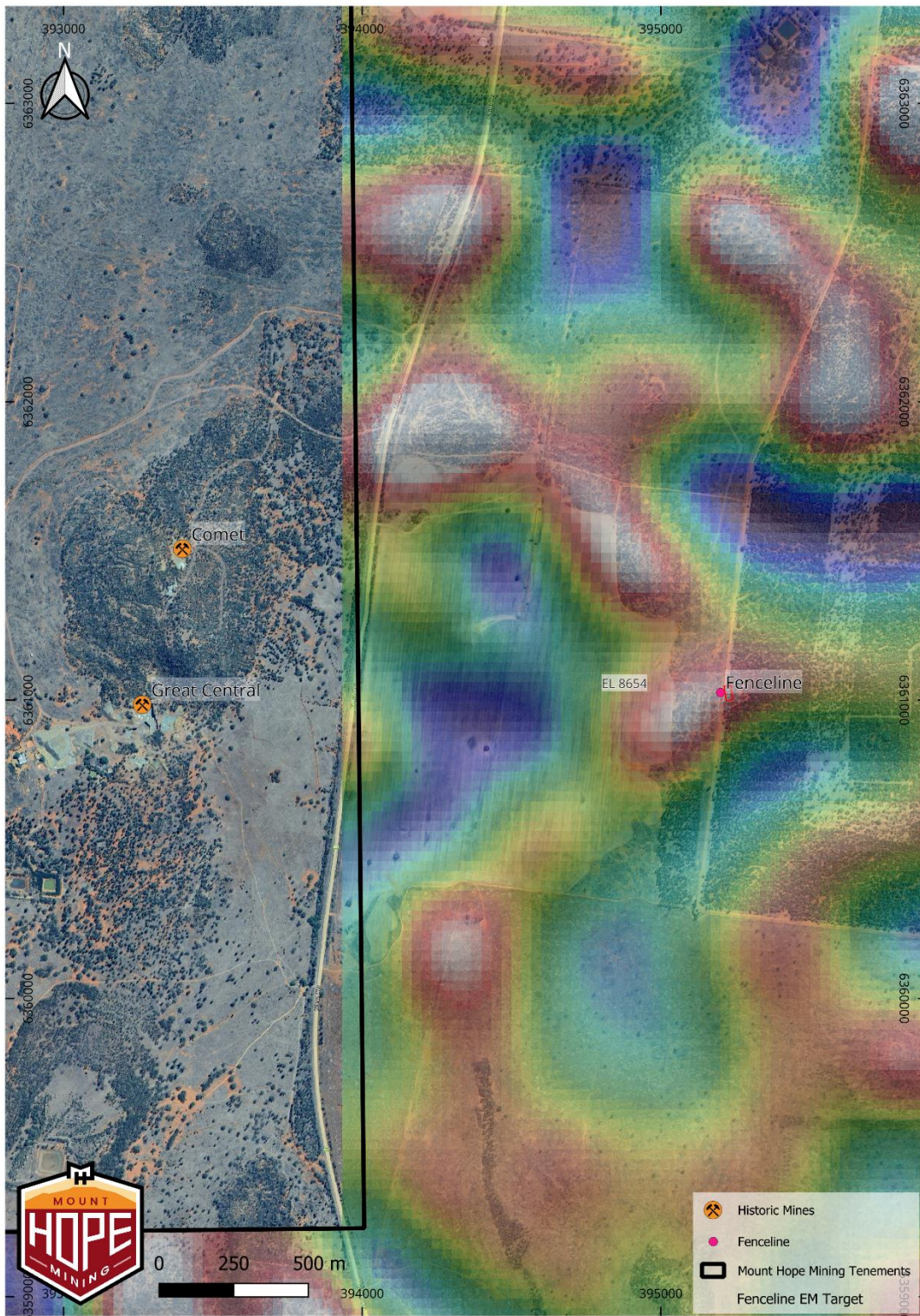


Figure 9: Fenceline EM target plan and modelled conductor

The Company noted that the anomaly area coincides with mapped volcanic porphyry rocks and is interpreted as potentially representing a bedrock sulphide source, supporting further drill testing once approvals are secured.

At Mt Solar, the Company advanced target generation based on review of historical drilling and geophysics, including priority targets identified along strike from historical intercepts. Historical drilling results cited by the Company include 12 metres at 3.78 g/t Au from 24 metres in hole SL005, and the

**MOUNT HOPE MINING  
LIMITED**

Company stated that additional VTEM targets north and south of the old Mt Solar mine represent compelling follow-up drill targets (Figure 10).

For personal use only

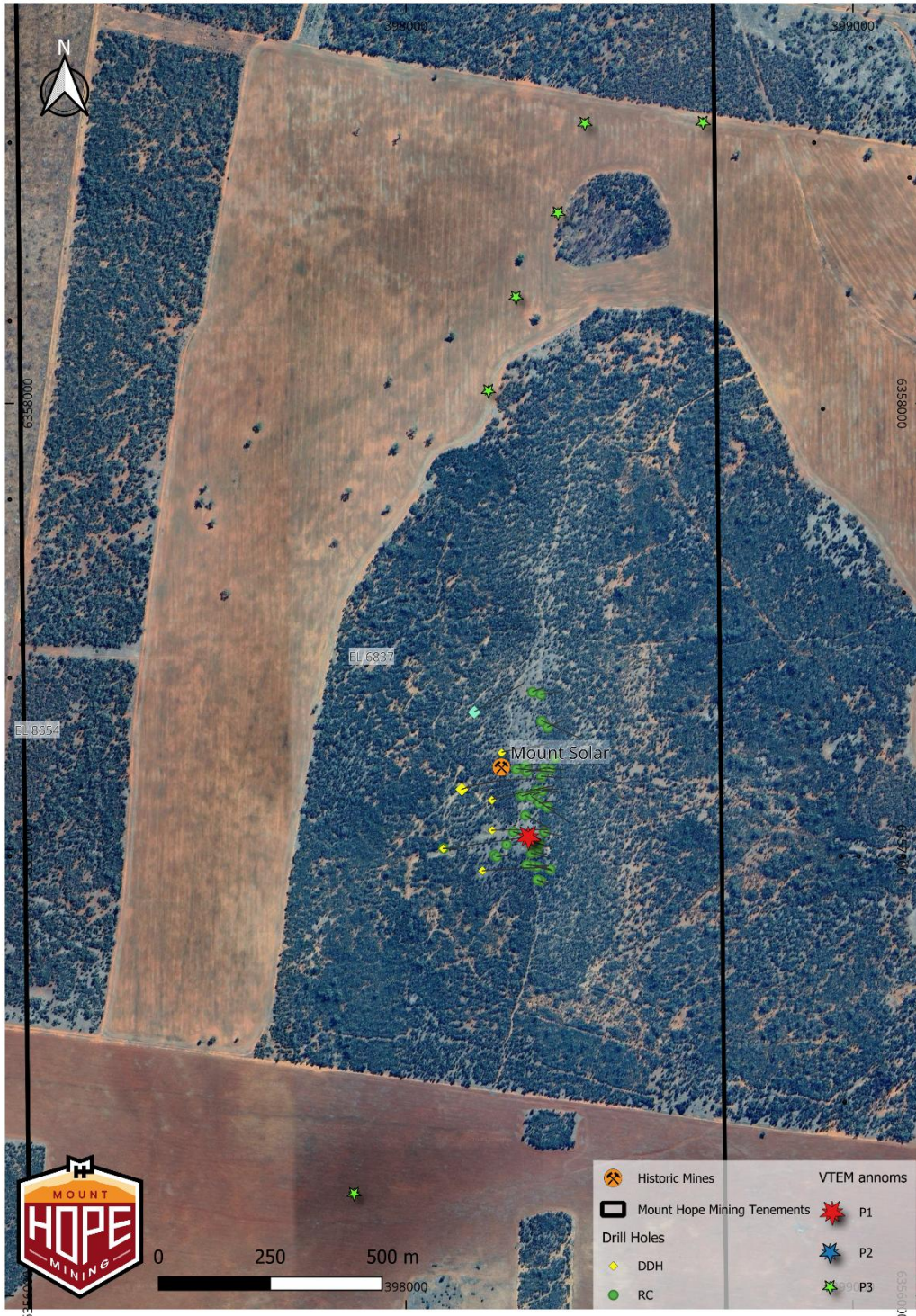


Figure 10: Mt Solar target map with historical drilling and VTEM/MLTEM targets

The Company also reported that review of core supported significant similarities between mineralised Mt Solar and Mt Solitary rocks, providing further support for the prospectivity of the broader MS2 corridor and ongoing regional targeting along the trend.

**MOUNT HOPE MINING  
LIMITED**

---

**Corporate**

During the half-year ended 31 December 2025, the Company continued to actively manage its capital position to support the advancement of its exploration strategy at the Mt Hope Project, with a particular focus on accelerating drilling at the Mt Solitary gold prospect and progressing regional target generation across the broader project area.

In October 2025, the Company announced a capital raising initiative comprising a placement and a share purchase plan (SPP), with the intended purpose of strengthening the balance sheet and funding follow-up drilling and regional exploration activities.

During the half-year, the Company successfully completed a \$1.23 million placement, which provided additional working capital to continue exploration activities and support the recommencement and expansion of drilling at Mt Solitary.

The SPP component of the proposed raise was withdrawn in November 2025 due to prevailing market conditions, and all application monies were refunded in full.

**Principal Activities**

The principal activity of the Group during the half year was gold and base metal exploration.

**Operating Results for the Period**

The operating result of the Group for the reporting period was a loss of \$1,141,732 (2024 \$537,384).

**Significant Events after Reporting Date**

No matters or circumstances have arisen since the end of the financial year which significantly affected or may significantly affect the operations of the Group, the results of those operations, or the state of affairs of the Group in future financial years.

**Dividends**

The Directors do not recommend the payment of a dividend and no amount has been paid or declared by way of a dividend to the date of this report.

For personal use only

**MOUNT HOPE MINING  
LIMITED**

---

**Auditor Independence**

Section 307C of the Corporations Act 2001 requires our auditors, Hall Chadwick to provide the Directors of the Company with an Independence Declaration in relation to the audit of this financial report. The Directors have received the Independence Declaration which has been included within this financial report.

Signed in accordance with a resolution of the directors:



**Mr Ben Phillips**  
**Non-Executive Chairman**

Dated this 13th day of March 2026

For personal use only

To the Board of Directors

## AUDITOR'S INDEPENDENCE DECLARATION UNDER SECTION 307C OF THE CORPORATIONS ACT 2001

As lead audit director for the review of the financial statements of Mount Hope Mining Limited and its Controlled Entities for the half year ended 31 December 2025, I declare that to the best of my knowledge and belief, there have been no contraventions of:

- the auditor independence requirements of the *Corporations Act 2001* in relation to the review; and
- any applicable code of professional conduct in relation to the review.

Yours Faithfully,



**HALL CHADWICK WA AUDIT PTY LTD**



**D M BELL FCA**  
**Director**

Dated this 13<sup>th</sup> day of March 2026  
Perth, Western Australia

For personal use only

**MOUNT HOPE MINING  
LIMITED**

**Condensed Consolidated Statement of Profit or Loss and Other Comprehensive  
Income**

**For the Half Year Ended 31 December 2025**

	Notes	Dec 2025	Dec 2024
		\$	\$
Revenue		67,266	-
Administration and other expenses		(186,587)	(152,862)
Listing expenses		(41,904)	(131,059)
Directors' fees		(42,805)	(38,588)
Depreciation		(763)	-
Exploration & evaluation expensed		(922,107)	(12,895)
Share based payments		(14,832)	(201,980)
<b>Net loss from operations</b>		<b>(1,141,732)</b>	<b>(537,384)</b>
<b>Loss before income tax</b>		<b>(1,141,732)</b>	<b>(537,384)</b>
Income tax expense		-	-
<b>Net loss for the year</b>		<b>(1,141,732)</b>	<b>(537,384)</b>
Other comprehensive income, net of income tax		-	-
<b>Total comprehensive loss for the year</b>		<b>(1,141,732)</b>	<b>(537,384)</b>
Basic and Diluted (loss) per share (cents)		(2.71)	(4.59)

*The accompanying notes form part of these consolidated financial statements.*

For personal use only

**MOUNT HOPE MINING  
LIMITED**

**Condensed Consolidated Statement of Financial Position**  
**As at 31 December 2025**

	Notes	31-Dec-25 \$	30-Jun-25 \$
<b>ASSETS</b>			
<b>Current Assets</b>			
Cash and cash equivalents		3,778,237	3,958,488
Prepayments		32,666	7,305
Trade and other receivables		157,494	185,716
<b>Total Current Assets</b>		<b>3,968,397</b>	<b>4,151,509</b>
<b>Non-Current Assets</b>			
Plant & equipment		26,691	-
Security deposits		208,000	99,000
Exploration & evaluation acquired	4	960,000	960,000
<b>Total Non-Current Assets</b>		<b>1,194,691</b>	<b>1,059,000</b>
<b>Total Assets</b>		<b>5,163,088</b>	<b>5,210,509</b>
<b>LIABILITIES</b>			
<b>Current Liabilities</b>			
Trade and other payables	5	133,777	174,796
<b>Total Current Liabilities</b>		<b>133,777</b>	<b>174,796</b>
<b>Net Assets</b>		<b>5,029,311</b>	<b>5,035,713</b>
<b>EQUITY</b>			
Issued capital	6	6,934,679	5,824,181
Reserves	7	521,957	497,125
Accumulated losses		(2,427,325)	(1,285,593)
<b>Total Equity</b>		<b>5,029,311</b>	<b>5,035,713</b>

*The accompanying notes form part of these consolidated financial statements.*

**MOUNT HOPE MINING  
LIMITED**

**Condensed Consolidated Statement of Cash Flows  
For the Half Year Ended 31 December 2025**

	Notes	Dec-25	Dec-24
		\$	\$
<b>Cash flows from operating activities</b>			
Other income		36,670	-
Payments for exploration assets		(950,890)	(10,332)
Payments to suppliers and employees		(278,803)	(442,562)
<b>Net cash used in operating activities</b>		<b>(1,193,023)</b>	<b>(452,894)</b>
<b>Cash flows from investing activities</b>			
Payments for plant, property and equipment		(27,454)	-
Payments for tenement security deposits		(168,000)	-
<b>Net cash used in investing activities</b>		<b>(195,454)</b>	<b>0</b>
<b>Cash flows from financing activities</b>			
Proceeds from issue of ordinary shares		1,230,000	5,567,000
Proceeds from issue of options		103,125	-
Payments for share issue costs		(124,899)	(200,183)
<b>Net cash from financing activities</b>		<b>1,208,226</b>	<b>5,366,817</b>
Net (decrease) / increase in cash and cash equivalents		(180,251)	4,913,923
Cash and cash equivalents at the beginning of the Year		3,958,488	-
<b>Cash and cash equivalents at the end of the year</b>		<b>3,778,237</b>	<b>4,913,923</b>

*The accompanying notes form part of these consolidated financial statements.*

**MOUNT HOPE MINING  
LIMITED**

**Consolidated Statement of Changes in Equity**  
**For the Year Ended 31 December 2025**

	Issued Capital \$	Reserves \$	Accumulated Losses \$	Total \$
<b>Balance at 1 July 2024</b>	20,000	-	(12,761)	7,239
Loss for the year	-	-	(537,384)	(537,384)
Other comprehensive income	-	-	-	-
<b>Total comprehensive loss</b>	-	-	(537,384)	(537,384)
<b>Transactions with equity holders in their capacity as owners</b>				
Issue of shares	6,547,000	-	-	6,547,000
Capital raising costs	(704,746)	-	-	(704,746)
Share based payments	-	404,000	-	404,000
<b>Total transactions with equity holders in their capacity as owners</b>	5,842,254	404,000	-	6,246,254
<b>Balance at 31 December 2024</b>	<b>5,862,254</b>	<b>404,000</b>	<b>(550,145)</b>	<b>5,716,109</b>
<b>Balance at 1 July 2025</b>	<b>5,824,181</b>	<b>497,125</b>	<b>(1,285,593)</b>	<b>5,035,713</b>
Loss for the year	-	-	(1,141,732)	(1,141,732)
Other comprehensive income	-	-	-	-
<b>Total comprehensive loss</b>	-	-	(1,141,732)	(1,141,732)
<b>Transactions with equity holders in their capacity as owners</b>				
Issue of shares	1,230,000	-	-	1,230,000
Issue of options/performance rights	-	24,832	-	24,832
Capital raising costs	(119,502)	-	-	(119,502)
<b>Total transactions with equity holders in their capacity as owners</b>	1,110,498	24,832	-	1,135,330
<b>Balance at 31 December 2025</b>	<b>6,934,679</b>	<b>521,957</b>	<b>(2,427,325)</b>	<b>5,029,311</b>

*The accompanying notes form part of these consolidated financial statements.*

# MOUNT HOPE MINING LIMITED

## NOTES TO THE FINANCIAL STATEMENTS FOR THE HALF YEAR ENDED 31 DECEMBER 2025

### 1. CORPORATE INFORMATION

This financial report of Mount Hope Mining Limited (the “Company”, or the “Group”) was authorised for issue in accordance with a resolution of the directors on 12 March 2026.

Mount Hope Mining Limited is a public company listed on the ASX, incorporated and domiciled in Australia.

The Company was incorporated on 27 May 2024.

### 2. SUMMARY OF MATERIAL ACCOUNTING POLICIES

#### (a) Basis of Preparation

These consolidated interim financial statements are general purpose financial statements, which have been prepared in accordance with the requirements of the *Corporations Act 2001*, Australian Accounting Standards including AASB 134 *Interim Financial Reporting*, Accounting Interpretations and other authoritative pronouncements of the Australian Accounting Standards Board. The financial statements comprise the consolidated interim financial statements for the Group. For the purposes of preparing the financial statements, the Company is a for-profit entity.

The consolidated interim financial statements do not include full disclosures of the type normally included in the full financial report. Therefore, it cannot be expected to provide as full an understanding of the financial performance, financial position and cash flows of the Company as the full financial report. It is recommended these consolidated interim financial statements be read in conjunction with the full financial report for the year ended 30 June 2025 and any public announcements made by Mount Hope Mining Limited during the half year in accordance with continuous disclosure requirements arising under the *Corporations Act 2001* and the ASX Listing Rules.

The same accounting policies and methods of computation have been followed in this interim financial report as were applied in the most recent annual financial statements. These accounting policies are consistent with Australian Accounting Standards and with International Financial Reporting Standards. For the purpose of preparing the consolidated interim financial statements, the half year has been treated as a discrete reporting period.

#### (b) New and Amended Accounting Policies Adopted by the Company

The Group has adopted all of the new or amended Accounting Standards and Interpretations issued by the Australian Accounting Standards Board (AASB) that are mandatory for the current reporting period.

Any new or amended Accounting Standards or Interpretations that are not yet mandatory have not been early adopted.

### 3. SEGMENT INFORMATION

The Group has identified its operating segments based on the internal reports that are used by the Board (the chief operating decision makers) in assessing performance and in determining the allocation of resources.

The Board as a whole will regularly review the identified segments in order to allocate resources to the segment and to assess its performance.

The Board considers that it has only operated in one segment, being mineral exploration.

For personal use only

**MOUNT HOPE MINING  
LIMITED**

**4. EXPLORATION EXPENDITURE**

	<b>31 December 2025</b>	<b>30 June 2025</b>
	\$	\$
<b>Exploration and evaluation assets</b>		
Balance at the beginning of period	960,000	-
Acquisition of Mount Hope Project <sup>1</sup>	-	960,000
Balance at the end of reporting period	960,000	960,000

<sup>1</sup>The Mount Hope Project was acquired for 5,000,000 shares valued at 20 cents per share. The acquisition included the Mount Hope tenements and four \$10,000 security deposits held over the four tenements.

Exploration and evaluation costs are expensed in the statement of profit or loss, except for the costs of acquiring licenses, which are capitalized.

Once technical feasibility and commercial viability of the area of interest are demonstrable, exploration and evaluation assets attributable to that area are first tested for impairment and then reclassified from exploration and evaluation assets to development assets.

**5. TRADE AND OTHER PAYABLES**

	<b>31 December 2025</b>	<b>30 June 2025</b>
	\$	\$
Trade creditors	133,777	174,796
Balance at the end of reporting period	133,777	174,796

All trade creditors are unsecured, non-interest bearing and are due and payable within 12 months.

**6. CONTRIBUTED EQUITY**

	<b>31 December 2025</b>		<b>30 June 2025</b>	
	No.	\$	No.	\$
<b>Ordinary shares</b>				
Issued and fully paid		6,934,679		5,824,181
	No.	\$	No.	\$
Movement in ordinary shares on issue				
Balance at the beginning of the period	2,000,000	20,000	2,000,000	20,000
Issue of founder shares	4,200,000	42,000	4,200,000	42,000
Issue of seed shares	5,050,000	505,000	5,050,000	505,000
Issue of vendor shares (non-cash)	5,000,000	1,000,000	5,000,000	1,000,000
Issue of IPO shares	25,000,000	5,000,000	25,000,000	5,000,000
Share Placement	6,150,000	1,230,000	-	-
Share issue costs	-	(862,321)	-	(742,819)
<b>Balance at the end of the period</b>	<b>47,400,000</b>	<b>6,934,679</b>	<b>41,250,000</b>	<b>5,824,181</b>

For personal use only

**MOUNT HOPE MINING  
LIMITED**

**7. RESERVES**

	<b>31 December 2025</b>	<b>30 June 2025</b>
	<b>\$</b>	<b>\$</b>
Share based payment (IPO option) reserve	404,000	404,000
Share based payment (loyalty option) reserve (1)	103,125	93,125
Share based payment (performance right) reserve (2)	6,232	-
Share based payment (incentive option) reserve (3)	8,600	-
	<b>521,957</b>	<b>497,125</b>

- (1) During the period, the Company received \$10,000 cash consideration for the issue of 1,000,000 loyalty options to three Directors which are exercisable at 25 cents each on or before 30 June 2028.
- (2) On 13 November 2025, the Company granted 2,000,000 performance rights to three Directors in accordance with Resolution 7 of the AGM. The performance rights were issued for no consideration, have zero exercise price and expire on 12 November 2028. Vesting is subject to meeting a performance hurdle of 15 days VWAP above 40 cents per share. The fair value of the performance rights at date granted was estimated at \$224,340 which will be recognized as a share based employee expense over the 36-month life of the rights. The fair value was calculated using the Monte Carlo simulation method with the following assumptions; risk free rate 3.4%, share price at valuation date 16 cents, share price volatility 111.55%, target price 40 cents.
- (3) During the period, the Company issued Tranche 1 of incentive options to the Managing Director in accordance with Resolution 6 of the AGM. The incentive options vest immediately at issue and have an exercise price of 45% above 10 day VWAP at any time over their three year life. The fair value of the 100,000 incentive options at date granted was estimated at \$8,600 or 8.6 cents each. The fair value was calculated using the Black Scholes method with the following assumptions; risk free rate 3.4%, share price at valuation date 15 cents, share price volatility 90%, target price 21.75 cents. During the period the Company issued Tranches 2 and 3. The fair value of Tranches 2 and 3 was estimated at \$12,470, calculated using the Monte Carlo simulation method with the following assumptions; risk free rate 3.6%, share price at valuation date 19 cents and share price volatility 110.0%.

**8. RELATED PARTY DISCLOSURE**

In the opinion of the directors, there were no significant changes in related party transactions during the period ended 31 December 2025.

For personal use only

**MOUNT HOPE MINING  
LIMITED**

---

**9. COMMITMENTS**

The Company's minimum expenditure commitments in relation to its tenements are as follows:

	<b>31 December 2025</b>	<b>30 June 2025</b>
	<b>\$</b>	<b>\$</b>
Within 1 year <sup>(1), (2)</sup>	161,389	238,333
Between 2 and 5 years <sup>(1), (2)</sup>	125,000	166,667
More than 5 years <sup>(1), (2)</sup>	83,333	41,667
	<u>369,722</u>	<u>446,667</u>

(1) Expenditure for 1 year, between 2 to 5 years and more than 5 years is available for the EL 9800 only.

(2) As tenements EL 6837, EL 8058, EL 8290 and EL 8654 are due to be renewed during 2026, the expenditure commitments for these tenements will not be known until after renewal.

The Group has no other capital or expenditure commitments as at reporting date.

**10. EVENTS AFTER REPORTING DATE**

Post period end the Company issued the following securities under its Employee Securities Incentive Plan:

- Performance Rights – 350,000 performance rights which will expire on 27 November 2028 and are subject to continuous employment and achievement of a performance hurdle, and
- Options – 250,000 options which will expire on 11 March 2029, with a strike price of \$0.27 and are subject to remaining on continuous contract.

**11. CONTINGENT LIABILITIES**

The Company has no contingent liabilities as at 31 December 2025.

For personal use only

**MOUNT HOPE MINING  
LIMITED**

---

**DIRECTOR'S DECLARATION**

In accordance with a resolution of the directors of Mount Hope Mining Limited, I state that:

1. In the opinion of the directors:
  - (a) the interim financial statements and notes are in accordance with the *Corporations Act 2001*, including:
    - (i) giving a true and fair view of the Company's financial position as at 31 December 2025 and of its performance for the period ended on that date.
    - (ii) complying with Australian Accounting Standards, International Financial Reporting Standards as issued by the International Accounting Standards Board and *Corporations Regulations 2001*.
  - (b) There are reasonable grounds to believe that the Company will be able to pay its debts as and when they become due and payable.
2. This declaration has been made after receiving the declarations required to be made to the directors in accordance with section 303 (5) of the *Corporations Act 2001*.

Signed in accordance with a resolution of the Board of Directors:



**Mr Ben Phillips**  
**Non Executive Chairman**

Dated this 13<sup>th</sup> day of March 2026

For personal use only

## INDEPENDENT AUDITOR'S REVIEW REPORT TO THE MEMBERS OF MOUNT HOPE MINING LIMITED

### Conclusion

We have reviewed the accompanying half-year financial report of Mount Hope Mining Limited ("the Company") and Controlled Entities ("the Consolidated Entity") which comprises the condensed consolidated statement of financial position as at 31 December 2025, the condensed consolidated statement of profit or loss and other comprehensive income, condensed consolidated statement of changes in equity and condensed consolidated statement of cash flows for the half-year ended on that date, a summary of material accounting policies and other selected explanatory notes, and the directors' declaration.

Based on our review, which is not an audit, we have not become aware of any matter that makes us believe that the half-year financial report of Mount Hope Mining Limited and Controlled Entities does not comply with the *Corporations Act 2001* including:

- a. Giving a true and fair view of the Consolidated Entity's financial position as at 31 December 2025 and of its performance for the half-year ended on that date; and
- b. Complying with Accounting Standard AASB 134: *Interim Financial Reporting* and *Corporations Regulations 2001*.

### Basis for Conclusion

We conducted our review in accordance with ASRE 2410 *Review of a Financial Report Performed by the Independent Auditor of the Entity*. Our responsibilities are further described in the *Auditor's Responsibilities for the Review of the Financial Report* section of our report. We are independent of the Company in accordance with the auditor independence requirements of the *Corporations Act 2001* and the ethical requirements of the Accounting Professional and Ethical Standards Board's APES 110 *Code of Ethics for Professional Accountants* that are relevant to our audit of the annual financial report in Australia. We have also fulfilled our other ethical responsibilities in accordance with the Code.

We confirm that the independence declaration required by the *Corporations Act 2001* which has been given to the directors of the Company, would be in the same terms if given to the directors as at the time of this auditor's review report.

### Responsibility of the Directors for the Financial Report

The directors of the Company are responsible for the preparation of the half-year financial report that gives a true and fair view in accordance with Australian Accounting Standards and the *Corporations Act 2001* and for such control as the directors determine is necessary to enable the preparation of the half-year financial report that gives a true and fair view and is free from material misstatement, whether due to fraud or error.

For personal use only

## Auditor's Responsibility for the Review of the Financial Report

Our responsibility is to express a conclusion on the half-year financial report based on our review. ASRE 2410 requires us to conclude whether we have become aware of any matter that makes us believe that the half-year financial report is not in accordance with the *Corporations Act 2001* including giving a true and fair view of the Consolidated Entity's financial position as at 31 December 2025 and its performance for the half-year ended on that date, and complying with Accounting Standard AASB 134 *Interim Financial Reporting* and the *Corporations Regulations 2001*.

A review of a half-year financial report consists of making enquiries, primarily of persons responsible for financial and accounting matters, and applying analytical and other review procedures. A review is substantially less in scope than an audit conducted in accordance with Australian Auditing Standards and consequently does not enable us to obtain assurance that we would become aware of all significant matters that might be identified in an audit. Accordingly, we do not express an audit opinion.



**HALL CHADWICK WA AUDIT PTY LTD**



**D M BELL FCA**  
**Director**

Dated this 13<sup>th</sup> day of March 2026  
Perth, Western Australia