

ASX ANNOUNCEMENT

29 January 2026

GEORGETOWN GOLD PROJECT: FURTHER HIGH GRADE GOLD DRILL INTERCEPTS AT ELECTRIC LIGHT

Savannah Goldfields Limited (“Savannah” or “the Company”) (ASX:SVG) is pleased to announce the assay results now received from the Reverse Circulation Drilling program completed at Electric Light in December 2025.

Electric Light forms part of the Company’s Georgetown Gold Project and is located approximately 20km north of the township of Georgetown in far north Queensland and is approximately 30km by road to the north of the Company’s Georgetown Gold Processing Plant (GGPP).

HIGHLIGHTS

- Savannah completed eight Reverse Circulation (RC) drill holes at Electric Light in December for a total of 842m
- Holes were targeted at the down dip and down plunge extensions to the Electric Light mineralised zone and to define the strike extent of the gold mineralisation.
- Six holes intersected gold mineralisation with three of the eight holes intersecting significant zones of high grade gold mineralisation and three holes intersecting wide zones of lower grade mineralisation
- The best intercepts recorded are:
 - EL25RC1019 30m @ 2.70 g/t Au from 95m
 - Inc: **3m @ 19.04 g/t Au** from 98m
 - EL25RC1021 7m @ 3.68 g/t Au from 37m
 - EL25RC1024 22m @ 2.59 g/t Au from 104m
 - Inc: **4m @ 6.96g/t Au** from 107m
 - Inc: **3m @ 6.86 g/t Au** from 120m
- This new data is currently being added to the Electric Light database, and the Company plans to update the Inferred Mineralised Resource of 388,000t @ 3.70 g/t Au
- Metallurgical test work is also underway on the drill core from the diamond drill hole completed at the start of the recent drilling campaign. Two phases of test work are currently planned. The first phase will consist of gravity recovery and cyanidation testing and Savannah intends to review the results before finalising the scope of the second phase of metallurgical test work. The second phase is currently planned to include floatation test work.
- The Company then intends to assess the opportunity to conduct further open pit mining at Electric Light and to also undertake a scoping study for underground mining at Electric Light.

Brad Sampson the CEO of Savannah commented, “Electric Light with exceptional widths of high grade gold mineralisation and its proximity to the Georgetown Gold Processing Plant is an exciting development target. We look forward to incorporating these results into an update of the Electric Light Mineral Resource and to undertaking further exploration drilling towards assessing the full potential of this Deposit”.

ELECTRIC LIGHT LOCATION AND GEOLOGY

The Electric Light prospect is located approximately 20 km north of Georgetown and 30 km north of Savannah’s Georgetown Gold Processing Plant (GGPP), Figure 1.

The Electric Light Deposit is contained within ML3548 and EPM8545 which are both held by Savannah. A shallow open pit is situated within ML3548 which was excavated to a depth of 15m by Deutsche Rohstoff Australia Pty Ltd (DRAU) in 2011. DRAU extracted approximately 23kt of oxide ore at a grade of 8.70 g/t Au containing approximately 6,300 oz Au from this small open pit.

The Electric Light Deposit is situated close to the junction of two major faults; the Electric Light and Delaney Faults. The Electric Light Deposit lies along the major north-trending Delaney Fault zone, with the fault zone being 50 m to 100 m wide at Electric Light. The east-trending Electric Light Fault and a number of east to south-east trending minor faults displace the Delaney Fault close to the gold mineralisation.

The Delaney Fault zone contains a highly altered diorite of probable Proterozoic age, which extends some distance north and south of the known deposit. The Delaney Granite, a medium grained porphyritic muscovite biotite granite of Middle-Proterozoic age, forms the footwall and in some cases the hanging wall of the mineralized lode to the west of the Delaney Fault and to the east of the fault Proterozoic metamorphic rocks mainly comprising sediments of the Daniel Creek Formation occur.

The gold mineralisation is hosted in a grey-coloured siliceous brecciated rhyolite – dacite dyke of possible Permo-Carboniferous age that intrudes the fault zone. At surface, the dyke is traceable over 200 metres by old workings. The Electric Light mineralisation displays porphyry style alteration associated with the siliceous rhyolitic breccia. There is a main mineralised vein which strikes northeast – southwest and dips between 60 and 70° towards the southeast along the Delaney Fault with subordinate discontinuous subparallel structures in the hanging wall that are more erratic in occurrence.

The main mineralised vein dips to the southeast and varies in thickness from 5 m to 35 m. It is sporadically mineralized throughout. The rhyolite dyke pinches and swells into lenses containing sulphide veins and quartz sericite alteration. One such lens occurs at surface and has been traced to the south on a very shallow plunge of between 5 and 20 degrees, for a total length of 300 m. The Deposit is a hydrothermal gold deposit with mineral alteration and assemblages typical of a porphyry gold copper system. Chloritic and sericitic alteration is well developed around the mineralization and most intense where it extends to the diorite.

High grade gold mineralisation at Electric Light occurs in and on the margins of the rhyolite. The mineralisation has a well-defined moderately (60°) southeast dipping footwall. The hanging-wall is poorly defined and commonly appears to comprise a series of very shallow (0°

to 15°) east dipping splay structures. The gold mineralisation typically has a true width of between six and 15 meters but can swell to a width of 30m. The higher grade zones within the rhyolite are associated with sulphides veining comprising predominantly of arsenopyrite, with minor, iron pyrite, galena and sphalerite.

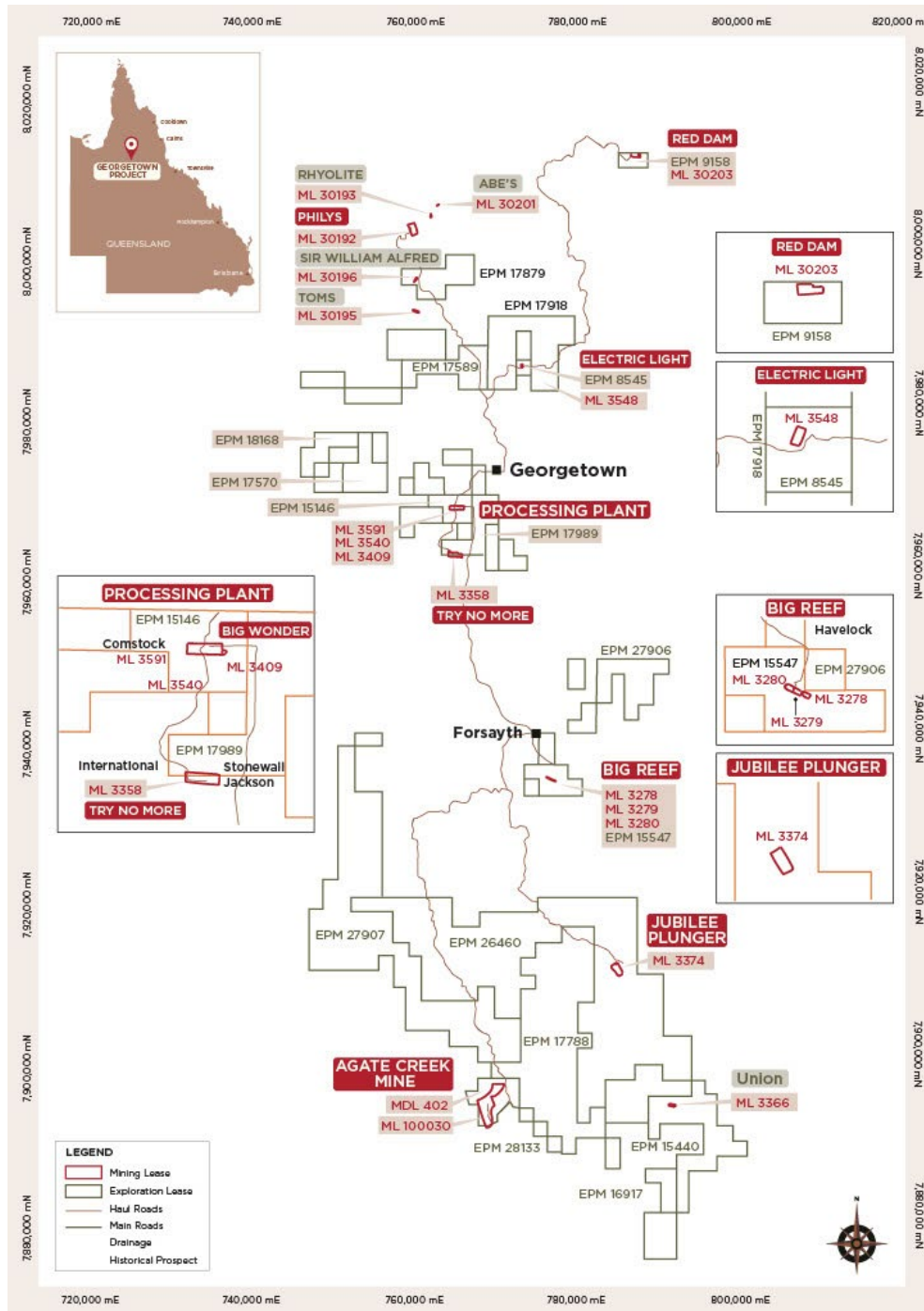


Figure 1: Location Map for Savannah's Tenements

For personal use only

ELECTRIC LIGHT DRILLING

Savannah completed one PQ diamond drill hole, EL25DD1016, at Electric Light November to a depth of 61m. The hole was drilled within 10m of historic drill hole EL1000 which was drilled in 2010 by Deutsche Rohstoff Australia Pty Ltd, details of this are included in an announcement to the ASX dated the 5th December 2025 and titled Georgetown Gold Project: Exploration Update.

In December Savannah drilled eight RC holes at Electric Light, EL25RC1017 to EL25RC1024 totalling 842m. The RC holes were drilled down dip, down plunge and along strike of the known mineralisation at Electric Light to test extensions to known gold mineralised zones and to infill areas where information was limited. The drilling was also designed to test for strike extensions of the gold mineralisation and the Company's geologists interpretation of a high grade gold mineralised zone plunging to the south..

The drill hole parameters for the eight RC holes drilled at Electric Light are shown in Table 1 and the drill hole locations are presented in Figure 2.

Table 1: Electric Light Drill Hole Parameters

Hole_ID	GDA_E	GDA_N	RL	Drilling Type	Dip	GDA94 Azimuth	Final Depth (m)	Sample Recovery (%)
EL25RC1017	772,164	7,988,843	327.00	RC	-60.00	292.00	90	98.6
EL25RC1018	772,150	7,988,821	326.00	RC	-60.00	292.00	96	99.0
EL25RC1019	772,174	7,988,805	331.00	RC	-60.00	292.00	140	99.3
EL25RC1020	772,169	7,988,786	330.00	RC	-60.00	292.00	144	99.1
EL25RC1021	772,107	7,988,780	322.00	RC	-60.00	292.00	60	95.0
EL25RC1022	772,041	7,988,693	329.00	RC	-60.00	292.00	72	98.9
EL25RC1023	772,065	7,988,679	331.00	RC	-60.00	292.00	100	99.2
EL25RC1024	772,113	7,988,681	328.00	RC	-60.00	292.00	140	99.6

ASSAY RESULTS

Assay Results have been received for all eight of the RC holes drilled at Electric Light in December. The best intercept was recorded in hole EL25RC1019 which intercepted a 30m wide zone assaying at 2.70 g/t Au from a downhole depth of 90m, including a high-grade zone of 3m from 98m assaying at 19.04 g/t Au.

The gold mineralisation at Electric Light is associated with intense silicification and sulphide veining, with the sulphide veins comprising fine grained arsenopyrite, iron pyrite, galena and sphalerite. The higher-grade gold zones at Electric light coincide with increased vein density and minor hydraulic brecciation.

The lithology which hosts the mineralisation is referred to as a rhyolite, this unit has been intensely altered and strongly silicified. Wherever the rhyolite has been intersected wide zones of low-grade gold mineralisation occur, i.e in hole EL25RC1020 which intersected 22m @ 0.51

g/t Au, with the overall grade of the intercept related to the number of the sulphide veins intersected.

For personal use only

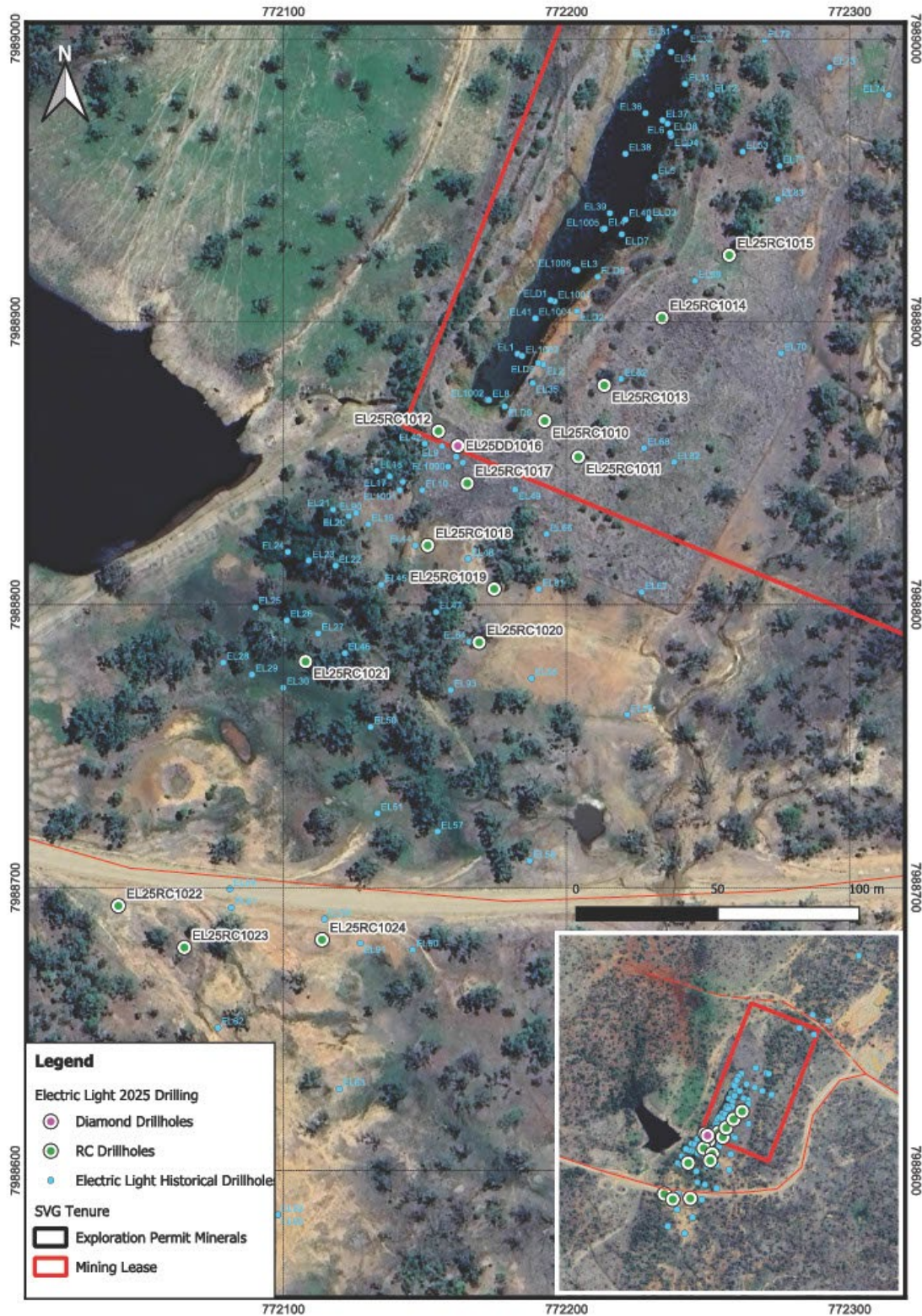


Figure 2: Drill Hole Location Map – showing historical and recently drilled holes

A summary of the assay results are included in Table 2, and a complete list of assay results for the individual sample intervals are included in Appendix 2. Each individual 1m interval was assayed for gold and multielement analysis to obtain detailed geochemical data for Electric Light in order to undertake geochemical vectoring of the prospect to assist in future drill hole targeting.

Cross sections through the Electric Light prospect are presented in Figures 3 and 4 and a Long- section through the prospect is presented in Figure 5. Drill hole parameters and assay results for the historic holes shown on the cross sections and long section were previously reported to the ASX on the 23rd October 2025 in a document titled “Georgetown Gold Project, High-grade Gold Drilling Results at Electric Light, Further Drilling Planned”.

Table 2: Assay Results for EL25RC1017 to ELRC1024

Hole No.	From (m)	To (m)	Width (m)	Au g/t	Ag g/t	As (%)	Cu (ppm)	Pb (ppm)	S (%)	Zn (%)
EL25RG1017	56	61	5	0.66	2.61	3,899	112	650	2.62	942
EL25RG1018	56	72	16	0.61	2.127	14,965	100	248	2.86	623
EL25RG1019	95	125	30	2.70	2.32	6,004	101	165	2.65	444
inc:	98	101	3	19.04	6.01	1,442	70	407	3.64	541
EL25RG1020	105	127	22	0.513	1.57	4,238	85	125	2.58	278
EL25RG1021	37	44	7	3.68	1.67	20,228	66	358	2.37	293
	37	40	3	6.66	2.19	42,120	22	220	3.2	221
EL25RG1022	NSR									
EL25RG1023	NSR									
EL25RG1024	104	128	24	2.59	1.07	1,544	57	42	2.88	133
inc:	107	111	4	6.96	2.11	5,436	30	49	1.83	107
inc:	120	123	3	6.86	3.18	378	89	111	0.71	252
and	137	140	3	1.54	0.53	1,554	49	33	0.8	136

Intercept calculated using a 0.30 g/t Au COG, with a maximum of 3m of internal dilution, no top cut has been applied.

The Electric Light mineralised zone dips at an angle of between 60 to 70 degrees. The drill holes were designed to intersect the mineralisation perpendicular to strike and dip, therefore the true thickness of the intercept is equal to the intercept width.

ELECTRIC LIGHT – PLANNED WORK

Metallurgical testwork of core from diamond hole EL25DD1016 (results announced to ASX on 5 December 2025) is currently being undertaken. Samples of the drill core were transported to a laboratory for metallurgical test work in January. Two phases of test work are currently planned. The first phase will consist of gravity recovery and cyanidation testing and Savannah intends to review the results before finalising the scope of the second phase of metallurgical test work. The second phase is currently planned to include floatation test work.

The Electric Light Inferred Mineral Resource is 388,000t @ 3.70 g/t Au at a 1.0 g/t Au cut off and was announced to ASX on 7th February 2022 in announcement “Georgetown Project Mineral Resources”.

Results from exploration drilling undertaken during the quarter have demonstrated potential for the Mineral Resources to grow and the Deposit remains open at depth. The Electric Light database is now being updated with all the latest assay results, and the Company plans to update the Electric Light Mineral Resource to incorporate all new information ahead of planning for further exploration at Electric Light.

The Company then intends to assess the opportunity to conduct further open pit mining at Electric Light and to undertake a scoping study for underground mining at Electric Light.

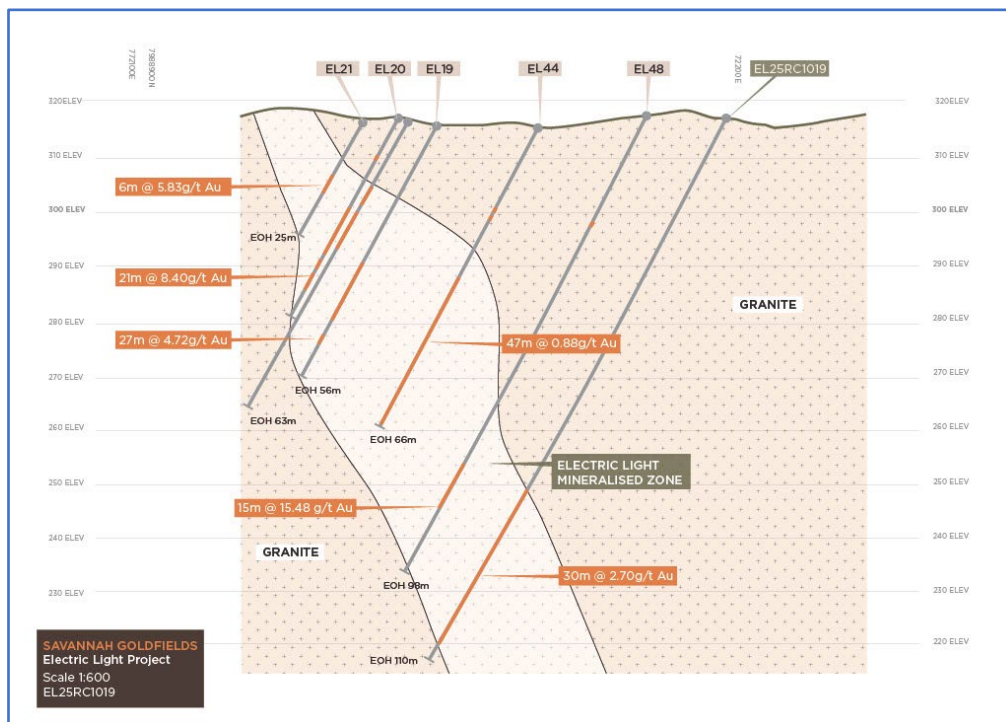


Figure 3: idealised Cross Section – EL25RC1019

For personal use only

This Report is Authorised by the Board of Directors

For further information, please contact:

Stephen Bizzell (Chairman) or Brad Sampson (CEO)

P (07) 3108 3500

E admin@savannahgoldfields.com

Competent Persons Statements

The information in this report that relates to Exploration Results compiled by Mr Patrick Smith, a Competent Person who is a Member of the Australian Institute of Mining and Metallurgy. Mr Smith is the owner and sole Director of PSGS Pty Ltd and is contracted to Savannah Goldfields Ltd as their Exploration Manager. Mr Smith confirms there is no potential for a conflict of interest in acting as the Competent Person. Mr Smith has sufficient experience that is relevant to the style of mineralisation and type of deposits under consideration and to the activity being undertaken to qualify as a Competent Person as defined in the 2012 Edition of the "Australasian Code for Reporting of Exploration Results, Mineral Resources and Ore Reserves". Mr Smith consents to the inclusion of this information in the form and context in which it appears in this release.

The information relating to Mineral Resource at the Georgetown Gold Project is extracted from ASX Announcements of 10 October 2025 titled "Mineral Resource Update for Jubilee Plunger Deposit" and of 7 February 2022 titled "Georgetown Project Mineral Resources".

The information relating to the historical drilling result at Electric Light Prospect is extracted from ASX Announcements of 23rd October 2025 titled "Georgetown Gold Project, High Grade Gold Drilling Results at Electric Light, Further Drilling Planned".

The reports are available to view on the Savannah Goldfields website www.savannahgoldfields.com. The reports were issued in accordance with the 2012 Edition of the JORC Australasian Code for Reporting of Exploration Results, Mineral Resources and Ore Reserves. The company confirms that it is not aware of any new information or data that materially affects the information included in the original market announcements and, in the case of estimates of Mineral Resource or Ore Reserve that all material assumptions and technical parameters underpinning the estimates in the relevant market

Appendix 1

Georgetown Mineral Resource

Deposit	Tonnage	Gold Grade	Silver Grade	Density	Contained Gold	Tenement
	t	g/t	g/t	t/m ³	oz Au	
Red Dam	201,000	5.7	12	2.89	37,000	ML30203 <i>EPM9158</i>
Electric Light	388,000	3.7	0.7	2.59	46,000	ML3548 <i>EPM8545</i>
Jubilee Plunger Indicated	98,000	2.4	16	2.58	7,560	
Jubilee Plunger Inferred	198,000	2.0	17	2.58	12,440	ML3374
Jubilee Plunger Total	296,000	2.1	17	2,58	20,000	
Big Reef	107,000	3.0	-	2.44	10,000	ML3278 ML3279 ML3280 <i>EPM15547</i>
Union	167,000	3.2	-	2.4	17,000	ML3366
Total Indicated	98,000	2.4	16	2.58	7,560	
Total Inferred	1,052,000	3.6	-	-	122,440	
Total Mineral Resource	1,159,000	3.5	-	-	130,000	

Mineral Resources reported at a cut of grade of 1.0 g/t Au.

Ounces rounded and reported to nearest 1,000 ounces

Ag assays for Big Reef and Union are limited and Ag cannot be estimated

Appendix 2: Electric Light Individual Assay Results – EL25RC1017 to 1024

EL25RC1017											
Sample No.	From Depth (m)	To Depth (m)	Au g/t	Ag g/t	As (ppm)	Cu (ppm)	Fe (%)	Pb (ppm)	S (%)	Sb (ppm)	Zn (ppm)
V57947	0	1	0.47	0.32	816	12	2.56	60	0.13	4	106
V57948	1	2	0.06	0.21	154	5	1.66	51	0	1	73
V57949	2	3	0.01	0.20	38	4	1.68	37	0	0	35
V57950	3	4	0.00	0.14	35	2	1.93	20	0	0	47
V57951	4	5	0.00	0.08	30	4	2.06	22	0	0	36
V57952	5	6	0.00	0.09	43	3	2.2	23	0	0	52
V57953	6	7	0.01	0.15	67	3	1.64	34	0	1	70
V57954	7	8	0.01	0.07	31	2	1.4	30	0	0	35
V57955	8	9	0.00	0.09	21	1	1.44	32	0	0	33
V57956	9	10	0.00	0.05	13	1	1.16	25	0	0	28
V57957	10	11	0.00	0.09	20	2	1.34	26	0	0	30
V57958	11	12	0.00	0.11	21	2	1.35	30	0	0	29
V57959	12	13	0.00	0.09	31	2	1.25	23	0	0	38
V57960	13	14	0.00	0.09	17	1	1.32	31	0	0	26
V57961	14	15	0.01	0.11	16	2	1.62	31	0	0	33

V57962	15	16	0.01	0.16	23	2	1.52	29	0	0	25
V57963	16	17	0.00	0.05	11	1	1.43	25	0	0	34
V57964	17	18	0.00	0.08	23	2	1.69	33	0	1	42
V57965	18	19	0.01	0.00	36	4	1.25	38	0	1	42
V57966	19	20	0.00	0.06	9	6	1.21	47	0	0	33
V57967	20	21	0.01	0.09	10	6	1.14	51	0	0	60
V57968	21	22	0.02	0.11	140	9	1.15	61	0.05	1	117
V57969	22	23	0.02	0.20	77	10	1.43	54	0.06	1	89
V57970	23	24	0.02	0.26	34	11	1.27	112	0.06	1	181
V57971	24	25	0.03	0.14	260	6	1.17	108	0.09	1	215
V57972	25	26	0.03	0.14	43	9	2.56	46	0.08	1	111
V57973	26	27	0.02	0.12	27	8	2.53	28	0.07	1	79
V57974	27	28	0.01	0.10	28	6	2.5	32	0.06	1	68
V57975	28	29	0.01	0.12	30	5	2.75	25	0	1	73
V57976	29	30	0.01	0.10	44	7	3.43	17	0	1	72
V57977	30	31	0.01	0.14	101	5	2.6	17	0.08	1	87
V57978	31	32	0.01	0.34	70	27	3.04	19	0.1	1	77
V57979	32	33	0.01	0.60	76	29	7.67	18	0.34	2	109
V57980	33	34	0.01	0.32	44	23	6.28	16	0.2	1	88
V57981	34	35	0.01	0.29	49	16	5.13	9	0.24	1	61
V57982	35	36	0.04	0.23	70	29	7.08	15	0.24	3	84
V57983	36	37	0.08	0.23	117	42	8.77	15	0.45	3	122
V57984	37	38	0.05	0.25	58	43	8.71	19	0.4	2	93
V57985	38	39	0.07	0.26	111	52	9.88	16	0.54	5	96
V57986	39	40	0.07	0.23	65	48	9.31	12	0.45	3	108
V57987	40	41	0.08	0.22	56	46	9.22	15	0.39	3	127
V57988	41	42	0.08	0.28	85	41	8.59	17	0.53	3	109
V57989	42	43	0.05	0.20	101	46	9.42	19	0.39	3	116
V57990	43	44	0.05	0.17	59	41	9.5	12	0.38	3	120
V57991	44	45	0.05	0.22	62	62	9.71	15	0.36	3	99
V57992	45	46	0.05	0.19	57	43	9.06	13	0.38	2	108
V57993	46	47	0.09	0.28	78	55	9.71	23	0.52	3	102
V57994	47	48	0.05	0.34	58	52	9.26	70	0.42	3	169
V57995	48	49	0.03	0.26	95	79	10.8	17	0.43	4	167
V57996	49	50	0.07	0.24	96	67	10.93	15	0.47	5	204
V57997	50	51	0.20	0.48	150	91	10.12	21	0.8	5	102
V57998	51	52	0.06	0.28	95	65	9.57	14	0.44	5	91
V57999	52	53	0.09	0.34	119	72	9.15	21	0.61	8	92
V58000	53	54	0.04	0.19	85	80	7.86	13	0.34	8	69
V58001	54	55	0.05	0.19	89	19	6.09	12	0.28	3	105
V58002	55	56	0.20	0.57	258	62	6.3	53	0.54	7	116
V58003	56	57	0.34	1.01	561	96	6.62	101	1.72	7	321
V58004	57	58	0.75	1.98	2,156	139	6.79	149	2.59	10	416

For personal use only

V58005	58	59	0.97	2.26	4,134	154	6.86	168	2.95	15	429
V58006	59	60	0.57	2.59	8,119	89	7.35	677	2.81	23	1065
V58007	60	61	0.69	5.22	4,528	82	8.83	2158	3.03	21	2483
V58008	61	62	0.07	1.19	578	66	9.66	243	0.62	10	438
V58009	62	63	0.01	0.67	119	53	8.96	60	0.33	5	244
V58010	63	64	0.01	1.67	138	58	8.45	129	0.42	5	371
V58011	64	65	0.26	1.75	3,315	73	8.9	224	1.32	12	597
V58012	65	66	0.04	0.48	592	49	9.32	52	0.4	5	266
V58013	66	67	0.03	0.48	181	50	8.74	67	0.31	3	256
V58014	67	68	0.29	0.65	3,482	40	7.8	199	0.77	8	410
V58015	68	69	0.03	0.47	151	45	6.96	202	0.26	3	438
V58016	69	70	0.03	0.80	122	56	8.2	173	0.42	3	533
V58017	70	71	0.07	1.19	143	50	8.04	223	0.52	3	427
V58018	71	72	0.02	0.69	122	44	8.74	108	0.35	3	310
V58019	72	73	0.18	1.73	656	63	8.18	466	1.29	5	1606
V58020	73	74	0.05	0.72	354	51	9.45	126	0.52	4	583
V58021	74	75	0.01	0.49	193	50	9.54	64	0.39	4	267
V58022	75	76	0.02	0.57	397	55	9.59	74	0.55	5	359
V58023	76	77	0.09	1.01	365	63	9.48	229	0.83	4	807
V58024	77	78	0.02	0.45	125	51	8.86	87	0.37	3	327
V58025	78	79	0.52	1.99	597	58	7	661	1.24	4	2980
V58026	79	80	0.29	1.39	501	54	8.54	1979	1.08	3	1103
V58027	80	81	0.03	0.40	197	42	8.13	286	0.51	4	280
V58028	81	82	0.02	0.18	175	31	6.89	88	0.39	4	177
V58029	82	83	0.01	0.06	47	8	2.82	25	0.12	2	80
V58030	83	84	0.02	0.06	34	5	1.98	35	0.1	1	60
V58031	84	85	0.01	0.07	30	4	1.51	32	0.08	1	83
V58032	85	86	0.01	0.00	15	2	0.97	14	0.06	1	21
V58033	86	87	0.01	0.00	21	2	1.13	13	0.07	1	21
V58034	87	88	0.02	0.00	25	2	1.26	13	0.13	1	28
V58035	88	89	0.02	0.12	24	2	1.5	13	0.12	1	31
V58036	89	90	0.02	0.00	19	5	1.42	13	0.07	1	36
EL25RC1018											
Sample No.	From Depth (m)	To Depth (m)	Au g/t	Ag g/t	As (ppm)	Cu (ppm)	Fe (%)	Pb (ppm)	S (%)	Sb (ppm)	Zn (ppm)
V58041	0	1	0.02	0.09	43	9	2.79	35	0	1	108
V58042	1	2	0.01	0.11	37	5	1.86	39	0	0	74
V58043	2	3	0.00	0.06	7	2	1.04	34	0	0	26
V58044	3	4	0.00	0.07	7	1	1.06	33	0	0	30
V58045	4	5	0.00	0.09	11	2	1.54	41	0	0	51
V58046	5	6	0.00	0.22	22	7	1.84	41	0	0	67
V58047	6	7	0.00	0.08	14	2	1.31	39	0	0	61
V58048	7	8	0.00	0.09	15	2	1.68	40	0	0	55

For personal use only

V58049	8	9	0.00	0.11	23	2	1.55	43	0	0	52
V58050	9	10	0.00	0.09	15	2	1.43	38	0	0	48
V58051	10	11	0.00	0.08	17	4	1.86	43	0	0	51
V58052	11	12	0.00	0.10	13	5	1.39	49	0	0	45
V58053	12	13	0.00	0.12	5	3	0.88	49	0	0	41
V58054	13	14	0.00	0.16	5	2	1.06	40	0	0	26
V58055	14	15	0.00	0.11	12	16	2.67	28	0	0	84
V58056	15	16	0.00	0.15	22	34	4	23	0	0	78
V58057	16	17	0.01	0.26	256	31	3.88	27	0	1	119
V58058	17	18	0.02	0.49	58	45	3.49	45	0.14	0	139
V58059	18	19	0.06	0.39	476	31	2.74	104	0.27	1	238
V58060	19	20	0.03	0.17	83	8	1.47	147	0.11	1	213
V58061	20	21	0.01	0.17	38	4	1.45	63	0.08	0	83
V58062	21	22	0.41	0.68	123	25	1.7	403	0.68	1	578
V58063	22	23	0.01	0.09	17	4	1.66	44	0.05	0	76
V58064	23	24	0.01	0.10	10	2	1.09	52	0	0	99
V58065	24	25	0.05	0.35	65	48	9.16	28	0.47	1	230
V58066	25	26	0.11	0.74	131	44	10.41	44	1.03	1	211
V58067	26	27	0.02	0.54	75	72	11.13	24	0.65	1	161
V58068	27	28	0.00	0.18	14	47	10.9	9	0.25	1	153
V58069	28	29	0.02	0.26	45	24	4.75	19	0.27	1	92
V58070	29	30	0.01	0.16	29	15	3.2	12	0.12	1	60
V58071	30	31	0.08	0.40	84	32	3.45	40	0.38	1	100
V58072	31	32	0.01	0.15	28	11	2.91	9	0.14	1	61
V58073	32	33	0.03	0.32	991	16	5.17	23	0.61	3	54
V58074	33	34	0.02	0.22	93	12	3.92	23	0.22	1	77
V58075	34	35	0.01	0.19	30	20	3.58	12	0.15	1	62
V58076	35	36	0.01	0.22	35	23	3.42	7	0.16	1	44
V58077	36	37	0.00	0.18	22	17	2.66	7	0.14	0	58
V58078	37	38	0.03	0.34	65	17	3.68	10	0.52	1	46
V58079	38	39	0.05	1.77	80	40	6.56	9	0.56	1	54
V58080	39	40	0.03	0.28	59	20	7.13	13	0.25	2	69
V58081	40	41	0.13	0.38	70	32	6.43	13	0.41	2	71
V58082	41	42	0.43	0.38	95	55	8.91	13	0.55	2	89
V58083	42	43	0.18	0.20	60	56	10.25	15	0.45	2	123
V58084	43	44	0.46	0.63	104	61	9.83	26	0.78	3	111
V58085	44	45	0.08	0.21	70	46	9.07	11	0.42	2	86
V58086	45	46	0.04	0.17	53	43	9.11	43	0.3	2	112
V58087	46	47	0.09	0.20	63	44	8.55	19	0.42	2	93
V58088	47	48	0.43	0.55	114	37	7.98	102	0.76	2	107
V58089	48	49	0.25	0.35	91	42	8.96	19	0.52	2	114
V58090	49	50	0.06	0.14	51	49	9.52	11	0.37	2	108
V58091	50	51	0.04	0.18	51	42	9.34	9	0.4	3	102

For personal use only

V58092	51	52	0.04	0.23	62	49	9.58	12	0.43	3	110
V58093	52	53	0.06	0.31	117	86	10.89	17	0.55	5	94
V58094	53	54	0.14	0.45	108	79	10.14	25	0.65	4	97
V58095	54	55	0.07	0.27	135	29	7.07	15	0.45	5	105
V58096	55	56	0.10	0.35	1,262	37	7.52	42	0.51	7	90
V58097	56	57	0.50	1.61	16,185	81	8.24	150	2.79	32	294
V58098	57	58	0.67	1.88	17,475	105	9.72	107	2.43	31	294
V58099	58	59	0.67	2.41	15,528	135	8.83	142	3.34	25	323
V58100	59	60	1.16	3.50	19,545	105	8.96	635	4.14	30	1461
V58101	60	61	0.76	2.38	8,795	133	7.69	222	2.61	14	585
V58102	61	62	0.53	1.95	5,828	131	8.15	77	2.56	11	252
V58103	62	63	0.63	2.23	7,157	122	10.18	119	2.95	14	359
V58104	63	64	1.13	3.32	42,418	84	10.27	1031	4.35	74	782
V58105	64	65	0.49	1.85	5,314	94	9.26	121	2.25	10	389
V58106	65	66	0.50	1.83	5,563	81	9.7	364	2.74	10	575
V58107	66	67	0.10	1.05	554	86	10.97	65	1.17	5	319
V58108	67	68	0.24	2.25	4,374	109	10	149	2.03	11	1049
V58109	68	69	0.22	2.18	1,509	131	9.53	80	1.95	7	552
V58110	69	70	0.50	1.56	21,974	86	10.9	120	2.22	38	350
V58111	70	71	1.17	2.93	45,065	76	10.27	331	5.29	78	1859
V58112	71	72	0.54	1.10	22,170	52	10.23	253	2.94	38	533
V58113	72	73	0.01	0.26	204	82	11.34	8	0.27	2	138
V58114	73	74	0.02	0.66	576	81	11.26	97	0.39	2	405
V58115	74	75	0.05	0.97	777	79	11.06	107	0.66	3	802
V58116	75	76	0.00	0.12	94	75	11.8	9	0.23	1	179
V58117	76	77	0.01	0.14	228	55	10.36	73	0.2	2	226
V58118	77	78	0.08	1.70	463	75	9.04	234	1.21	3	777
V58119	78	79	0.04	0.60	394	65	10.18	87	0.73	3	504
V58120	79	80	0.00	0.25	32	54	10.18	23	0.19	1	215
V58121	80	81	0.00	0.33	46	54	10.35	17	0.36	2	248
V58122	81	82	0.02	0.61	108	60	10.15	92	0.46	2	387
V58123	82	83	0.04	0.85	282	68	10.01	189	0.85	2	462
V58124	83	84	0.29	2.71	6,682	71	9.72	785	1.95	15	2143
V58125	84	85	0.16	1.01	335	67	9.41	225	1.27	3	903
V58126	85	86	0.27	2.20	2,366	88	7.67	472	2.68	7	3069
V58127	86	87	0.01	0.31	94	50	10.12	32	0.23	2	273
V58128	87	88	0.00	0.47	49	55	9.66	59	0.24	2	253
V58129	88	89	0.00	0.26	55	42	9.19	41	0.25	2	232
V58130	89	90	0.01	0.37	88	42	9.38	25	0.32	2	207
V58131	90	91	0.00	0.30	41	43	8.44	24	0.25	2	257
V58132	91	92	0.01	0.12	35	41	9.11	12	0.25	1	173
V58133	92	93	0.00	0.00	11	31	7.66	13	0.09	1	122
V58134	93	94	0.00	0.00	15	44	9.48	11	0.14	1	160

For personal use only

V58135	94	95	0.10	0.44	2,582	51	8.61	51	0.47	6	260
V58136	95	96	0.00	0.08	61	40	8.11	13	0.13	1	125
EL25RC1019											
Sample No.	From Depth (m)	To Depth (m)	Au g/t	Ag g/t	As (ppm)	Cu (ppm)	Fe (%)	Pb (ppm)	S (%)	Sb (ppm)	Zn (ppm)
V58141	0	1	0.03	0.16	74	124	8.66	17	0.08	1	430
V58142	1	2	0.01	0.09	14	31	4.27	5	0	0	221
V58143	2	3	0.00	0.18	27	120	7.17	6	0	0	144
V58144	3	4	0.00	0.20	25	81	8.35	6	0	0	147
V58145	4	5	0.00	0.22	22	86	4.68	9	0	0	107
V58146	5	6	0.00	0.10	14	15	2.83	14	0	0	73
V58147	6	7	0.00	0.16	34	37	3.62	19	0	0	120
V58148	7	8	0.00	0.10	11	20	2.81	16	0	0	83
V58149	8	9	0.00	0.18	16	83	4.74	19	0	0	128
V58150	9	10	0.00	0.08	19	7	4.61	16	0	0	131
V58151	10	11	0.00	0.18	11	37	3.26	18	0	0	85
V58152	11	12	0.00	0.14	10	12	3.23	19	0	0	83
V58153	12	13	0.00	0.09	16	7	3.96	20	0	0	126
V58154	13	14	0.00	0.07	8	3	3.37	19	0	0	90
V58155	14	15	0.00	0.07	7	4	4.12	23	0	0	109
V58156	15	16	0.00	0.13	21	37	5.49	28	0.05	0	124
V58157	16	17	0.00	0.16	19	64	10.81	9	0.21	1	155
V58158	17	18	0.00	0.20	13	62	11.88	13	0.33	1	173
V58159	18	19	0.00	0.13	12	33	5.37	20	0.09	0	113
V58160	19	20	0.00	0.07	7	8	3.88	25	0	0	108
V58162	20	21	0.00	0.12	9	12	4.03	27	0.06	0	104
V58163	21	22	0.01	0.33	58	88	10	21	0.34	1	168
V58164	22	23	0.00	0.27	8	108	9.13	9	0.17	1	150
V58165	23	24	0.00	0.35	13	89	4.8	18	0.11	1	94
V58166	24	25	0.00	0.26	15	83	5.14	23	0.14	0	152
V58167	25	26	0.00	0.12	10	13	2.85	30	0	0	95
V58168	26	27	0.00	0.10	7	12	2.58	32	0	0	93
V58169	27	28	0.00	0.10	7	18	2.54	33	0.07	0	95
V58170	28	29	0.00	0.07	24	10	5.26	17	0.06	0	127
V58171	29	30	0.00	0.10	16	19	3.18	29	0.06	0	97
V58172	30	31	0.00	0.06	40	5	3.79	21	0	0	122
V58173	31	32	0.00	0.09	20	15	3.02	25	0.08	0	84
V58174	32	33	0.00	0.23	26	61	4.07	32	0.15	0	116
V58175	33	34	0.00	0.12	18	13	3.05	31	0	0	93
V58176	34	35	0.00	0.08	7	5	1.63	36	0	0	53
V58177	35	36	0.00	0.07	6	4	1.47	39	0	0	39
V58178	36	37	0.00	0.18	22	41	3.92	21	0.08	0	196
V58179	37	38	0.00	0.19	27	35	3.03	39	0.14	0	120

For personal use only

V58180	38	39	0.01	0.12	15	9	1.64	53	0.07	0	70
V58181	39	40	0.00	0.08	7	8	1.49	30	0	0	47
V58182	40	41	0.00	0.09	8	14	1.26	38	0.05	0	46
V58183	41	42	0.03	0.14	354	11	1.3	63	0.09	1	129
V58184	42	43	0.00	0.00	16	3	1.13	47	0	0	75
V58185	43	44	0.01	0.11	41	3	1.07	61	0.07	0	73
V58186	44	45	0.24	0.28	267	12	1.26	311	0.15	1	248
V58187	45	46	0.20	0.82	1,050	53	2.74	311	0.41	3	492
V58188	46	47	0.30	1.30	1,356	89	3.69	439	0.51	3	705
V58189	47	48	0.08	0.41	96	21	1.66	122	0.17	1	205
V58190	48	49	0.26	0.60	505	17	1.37	351	0.15	1	619
V58191	49	50	0.09	0.30	186	10	1.06	165	0.07	1	382
V58192	50	51	0.10	0.48	113	14	1.19	214	0.1	1	443
V58193	51	52	0.61	1.18	192	75	1.35	1173	0.33	1	1378
V58194	52	53	0.03	0.15	14	7	1.1	196	0.07	0	186
V58195	53	54	0.02	0.12	22	4	1.22	67	0	0	74
V58196	54	55	0.31	0.51	85	19	1.78	300	0.34	1	730
V58197	55	56	0.08	0.21	22	9	1.52	91	0.16	0	157
V58198	56	57	0.15	0.47	83	15	1.51	382	0.32	1	200
V58199	57	58	0.02	0.17	26	5	1.13	85	0.1	0	102
V58200	58	59	0.00	0.08	9	3	0.98	50	0	0	46
V58201	59	60	0.00	0.00	6	2	1.14	30	0	0	28
V58202	60	61	0.00	0.00	7	3	1.22	26	0	0	86
V58203	61	62	0.00	0.13	12	10	1.21	26	0.08	0	32
V58204	62	63	0.00	0.07	6	3	1.17	34	0	0	24
V58205	63	64	0.00	0.09	10	3	1.37	35	0.06	0	48
V58206	64	65	0.01	0.06	9	5	1.24	21	0.06	0	27
V58207	65	66	0.04	0.17	19	15	1.36	50	0.18	0	198
V58208	66	67	0.01	0.09	11	9	1.84	51	0.09	0	260
V58209	67	68	0.05	0.64	40	66	2.77	120	0.21	1	224
V58210	68	69	0.08	0.44	18	14	1.42	129	0.08	0	230
V58211	69	70	0.01	0.08	14	3	1.45	42	0	0	53
V58212	70	71	0.00	0.07	13	8	1.28	39	0	1	46
V58213	71	72	0.01	0.09	42	8	1.26	27	0.07	1	60
V58214	72	73	0.02	0.14	160	5	1.4	43	0.06	1	151
V58215	73	74	0.02	0.20	16	5	1.09	64	0.07	0	71
V58216	74	75	0.01	0.10	13	5	1.12	47	0.05	0	57
V58217	75	76	0.01	0.15	18	4	1.19	38	0.11	0	32
V58218	76	77	0.02	0.22	42	7	3.1	47	0.26	1	59
V58219	77	78	0.07	0.21	65	40	5.09	46	0.37	1	112
V58220	78	79	0.15	0.24	88	60	8.1	20	0.48	2	117
V58221	79	80	0.24	0.31	83	48	8.42	18	0.55	2	104
V58222	80	81	0.39	0.54	144	70	8.69	77	0.85	2	124

For personal use only

V58223	81	82	0.54	0.62	185	52	7.72	43	1.19	2	113
V58224	82	83	0.21	0.28	129	67	9.22	14	0.66	2	90
V58225	83	84	0.22	0.30	126	52	10.07	16	0.67	2	109
V58226	84	85	0.04	0.21	67	67	10.15	16	0.46	2	137
V58227	85	86	0.12	0.33	92	116	11.09	33	0.54	3	147
V58228	86	87	0.04	0.19	62	88	9.92	19	0.32	2	121
V58229	87	88	0.42	0.47	149	86	9.46	17	0.89	2	128
V58230	88	89	0.06	0.23	72	95	10.55	16	0.42	3	116
V58231	89	90	0.02	0.16	57	93	10.78	14	0.34	3	113
V58232	90	91	0.02	0.15	55	87	10.78	19	0.35	3	171
V58233	91	92	0.03	0.15	57	63	10.02	17	0.32	3	107
V58234	92	93	0.04	0.08	43	24	8.72	20	0.18	3	79
V58235	93	94	0.02	0.16	42	25	8.78	24	0.19	3	77
V58236	94	95	0.03	0.25	37	43	7.72	15	0.22	2	83
V58237	95	96	5.03	1.31	366	37	6.63	72	2.57	3	108
V58238	96	97	0.93	0.70	281	71	9.15	89	1.89	3	231
V58239	97	98	1.14	0.83	291	157	7.55	57	1.88	3	152
V58240	98	99	4.50	1.82	713	66	8.67	171	3.84	3	590
V58241	99	100	17.04	3.80	1,745	75	8.76	488	3.29	4	429
V58242	100	101	35.57	12.41	1,871	69	7.05	563	3.78	7	604
V58243	101	102	0.93	1.18	2,407	76	7.55	79	2.42	6	103
V58244	102	103	0.03	0.24	114	77	11.57	11	0.29	4	179
V58245	103	104	0.84	1.73	7,949	99	10.16	64	3.13	10	297
V58246	104	105	1.16	1.67	14,099	71	8.38	95	3.51	18	338
V58247	105	106	0.48	1.26	2,639	80	11.21	53	2.48	5	231
V58248	106	107	0.78	1.88	8,796	100	10.1	132	3.69	14	506
V58249	107	108	1.55	1.89	12,582	112	10.76	112	3.44	14	374
V58250	108	109	0.56	1.34	4,075	87	9.12	119	2.6	7	367
V58251	109	110	1.15	1.26	5,082	110	10.9	157	2.1	9	347
V58252	110	111	2.27	2.55	10,770	126	10.65	129	3.14	14	307
V58253	111	112	0.38	1.57	2,956	71	9.21	60	2.11	7	248
V58254	112	113	0.46	4.64	3,471	328	9.24	148	4.28	8	297
V58255	113	114	0.31	1.31	2,474	58	9.14	51	1.99	6	175
V58256	114	115	0.82	2.58	8,586	89	8.22	227	3.71	15	288
V58257	115	116	0.96	1.59	3,502	70	9.51	137	2.13	7	255
V58258	116	117	0.61	1.40	3,060	64	8.69	72	1.89	7	346
V58259	117	118	0.30	1.09	8,614	65	8.58	79	1.59	18	505
V58260	118	119	0.13	0.90	10,199	70	8.99	22	0.86	19	104
V58261	119	120	1.22	7.72	43,042	376	13.29	252	8.28	81	1133
V58262	120	121	0.08	1.28	978	55	7.79	114	1.18	4	277
V58263	121	122	0.13	1.35	1,286	78	9.21	89	0.8	5	443
V58264	122	123	0.68	2.93	5,478	100	7.28	420	2.61	14	1214
V58265	123	124	0.39	2.09	3,067	74	9.23	308	1.32	8	1349

For personal use only

V58266	124	125	0.64	3.15	9,636	110	8.47	584	2.7	21	1527
V58267	125	126	0.18	1.73	3,409	78	8.51	309	1.77	9	898
V58268	126	127	0.37	1.62	9,249	87	7.54	181	2.29	20	951
V58269	127	128	0.03	0.28	345	38	8.91	58	0.26	2	219
V58270	128	129	0.00	0.18	99	50	10.2	17	0.2	2	158
V58271	129	130	0.02	0.36	126	54	9.92	72	0.48	2	179
V58272	130	131	0.00	0.19	56	52	10.28	15	0.18	2	159
V58273	131	132	0.12	1.40	2,581	60	10.4	260	0.77	6	913
V58274	132	133	0.01	0.10	68	52	10.52	11	0.17	1	166
V58275	133	134	0.00	0.12	32	57	10.1	10	0.19	1	147
V58276	134	135	0.00	0.11	56	48	9.8	12	0.28	2	143
V58277	135	136	0.00	0.09	26	56	10.49	9	0.19	1	152
V58278	136	137	0.11	1.08	4,267	68	10.81	154	0.93	9	173
V58279	137	138	0.15	4.12	4,065	68	10.52	2364	0.87	10	505
V58280	138	139	0.04	1.37	271	60	10.62	200	0.62	2	353
V58281	139	140	0.01	0.33	96	72	11.7	42	0.3	2	166
EL25RC1020											
Sample No.	From Depth (m)	To Depth (m)	Au g/t	Ag g/t	As (ppm)	Cu (ppm)	Fe (%)	Pb (ppm)	S (%)	Sb (ppm)	Zn (ppm)
V58286	0	1	0.01	0.10	36	16	3.36	30	0	0	112
V58287	1	2	0.01	0.09	19	10	3	24	0	0	92
V58288	2	3	0.00	0.11	20	7	3.39	34	0	0	95
V58289	3	4	0.00	0.13	23	11	3.2	36	0	0	87
V58290	4	5	0.01	0.21	46	22	4.13	25	0	0	92
V58291	5	6	0.01	0.23	36	13	4.13	27	0	0	103
V58292	6	7	0.00	0.13	23	6	3.84	25	0	0	189
V58293	7	8	0.00	0.12	18	8	3.16	22	0	0	119
V58294	8	9	0.00	0.10	17	10	3.54	29	0	0	117
V58295	9	10	0.00	0.15	22	11	3.38	25	0	0	96
V58296	10	11	0.00	0.13	25	11	3.36	24	0	0	97
V58297	11	12	0.00	0.09	20	9	2.7	32	0	0	78
V58298	12	13	0.01	0.11	100	21	3.65	38	0	0	172
V58299	13	14	0.00	0.09	27	4	2.8	31	0	0	95
V58300	14	15	0.00	0.10	14	8	3.71	33	0	0	110
V58301	15	16	0.00	0.20	26	77	5.51	14	0	0	95
V58302	16	17	0.00	0.19	40	168	9.29	7	0.2	0	126
V58303	17	18	0.00	0.20	35	150	8.94	11	0.19	0	128
V58304	18	19	0.00	0.16	24	158	10.37	10	0.15	0	133
V58305	19	20	0.00	0.20	11	149	10.53	5	0.08	0	124
V58306	20	21	0.00	0.14	10	97	9.75	5	0.06	0	115
V58307	21	22	0.00	0.24	33	146	6.78	15	0.18	0	98
V58308	22	23	0.00	0.08	16	15	2.96	25	0	0	73
V58309	23	24	0.00	0.15	18	15	3.47	32	0	0	90

For personal use only

V58310	24	25	0.00	0.10	11	15	2.95	32	0	0	90
V58311	25	26	0.00	0.15	21	16	2.74	30	0	0	77
V58312	26	27	0.00	0.23	17	24	2.81	30	0	0	77
V58313	27	28	0.00	0.12	13	15	2.68	26	0	0	68
V58314	28	29	0.00	0.11	15	10	2.42	20	0	0	52
V58315	29	30	0.00	0.15	34	13	2.61	26	0.07	0	77
V58316	30	31	0.00	0.17	256	18	3.05	24	0.08	1	98
V58317	31	32	0.00	0.11	94	8	3.28	30	0.07	0	87
V58318	32	33	0.00	0.07	35	4	3.18	20	0	0	95
V58319	33	34	0.01	0.25	280	52	4.25	24	0.2	1	107
V58320	34	35	0.00	0.16	18	15	2.72	30	0.06	0	69
V58321	35	36	0.00	0.16	20	30	2.46	39	0.07	0	79
V58322	36	37	0.00	0.08	13	5	1.71	40	0.06	0	76
V58323	37	38	0.00	0.11	16	5	2.27	44	0.08	0	82
V58324	38	39	0.01	0.11	53	10	4.1	24	0.08	1	141
V58325	39	40	0.01	0.11	16	6	3.7	31	0.1	0	161
V58326	40	41	0.01	0.11	20	7	3.65	68	0.08	0	134
V58327	41	42	0.00	0.15	20	21	2.64	39	0.1	0	93
V58328	42	43	0.03	0.43	35	16	3.25	42	0.18	0	161
V58329	43	44	0.06	0.33	320	32	2.7	108	0.28	1	247
V58330	44	45	0.01	0.18	26	18	1.79	55	0.14	0	142
V58331	45	46	0.02	0.20	30	20	2.45	135	0.16	0	185
V58332	46	47	0.01	0.17	19	11	1.43	89	0.13	0	125
V58333	47	48	0.00	0.11	16	9	1.35	41	0.11	0	56
V58334	48	49	0.01	0.11	17	6	1.48	88	0.1	0	130
V58335	49	50	0.01	0.12	12	4	1.46	157	0.07	0	75
V58336	50	51	0.01	0.15	16	7	2.38	67	0.06	0	132
V58337	51	52	0.00	0.09	22	9	2.99	25	0.07	0	115
V58338	52	53	0.00	0.12	26	6	3.56	27	0.08	0	129
V58339	53	54	0.00	0.15	17	11	3.07	30	0.06	0	100
V58340	54	55	0.00	0.23	25	18	2.8	26	0.1	0	118
V58341	55	56	0.15	0.46	538	9	1.84	183	0.25	1	418
V58342	56	57	0.00	0.12	30	13	2.37	32	0.06	0	71
V58343	57	58	0.00	0.06	11	3	1.26	32	0.05	0	42
V58344	58	59	0.08	0.48	80	13	3.46	137	0.3	1	271
V58345	59	60	0.01	0.16	40	9	3.73	35	0.15	0	137
V58346	60	61	0.01	0.30	58	28	4.58	39	0.19	0	194
V58347	61	62	0.01	0.19	122	16	1.67	35	0.09	1	72
V58348	62	63	0.03	0.19	22	7	2.4	46	0.11	0	247
V58349	63	64	0.07	0.25	18	10	1.93	217	0.12	0	220
V58350	64	65	0.01	0.15	199	8	2.03	79	0.1	1	130
V58351	65	66	0.10	0.40	263	9	1.4	303	0.27	1	404
V58352	66	67	0.07	0.20	686	12	1.1	177	0.22	1	461

For personal use only

V58353	67	68	0.02	0.11	141	3	0.92	53	0.1	0	102
V58354	68	69	0.09	0.30	992	10	1.32	142	0.24	2	218
V58355	69	70	0.06	0.29	373	9	1.36	123	0.17	1	156
V58356	70	71	0.06	0.29	441	9	1.29	151	0.19	1	221
V58357	71	72	0.16	0.71	359	31	1.67	494	0.28	1	832
V58358	72	73	0.13	0.41	144	9	1.33	246	0.22	1	344
V58359	73	74	0.10	0.41	588	9	1.05	363	0.25	1	324
V58360	74	75	0.44	1.03	1,707	27	1.18	686	0.45	3	1158
V58361	75	76	0.07	0.23	682	10	1.21	130	0.13	1	199
V58362	76	77	0.04	0.20	349	6	0.86	121	0.11	1	193
V58363	77	78	0.07	0.34	387	16	1.7	210	0.33	1	341
V58364	78	79	0.07	0.41	164	15	1.71	433	0.25	1	271
V58365	79	80	0.05	0.39	490	9	1.62	137	0.4	1	222
V58366	80	81	0.04	0.34	965	9	2.01	138	0.38	2	216
V58367	81	82	0.12	0.77	182	25	2.02	325	0.8	1	798
V58368	82	83	0.03	0.43	583	32	3.15	97	0.32	2	221
V58369	83	84	0.02	0.50	537	49	4.95	46	0.36	2	224
V58370	84	85	0.05	0.72	483	23	4.65	150	0.57	2	567
V58371	85	86	0.04	0.57	443	39	4.11	99	0.44	2	188
V58372	86	87	0.03	0.56	331	38	4.25	153	0.41	1	151
V58373	87	88	0.01	0.56	76	45	4.74	95	0.37	1	140
V58374	88	89	0.02	0.37	206	27	3.98	46	0.36	1	146
V58375	89	90	0.03	0.25	270	7	3.59	34	0.25	1	110
V58376	90	91	0.01	0.15	57	6	6.12	10	0.17	1	81
V58377	91	92	0.02	0.21	79	15	3.39	17	0.2	1	52
V58378	92	93	0.06	0.55	142	31	4.49	38	0.37	2	79
V58379	93	94	0.02	0.18	50	44	7.68	14	0.26	2	97
V58380	94	95	0.13	0.33	93	57	8.03	23	0.56	3	104
V58381	95	96	0.06	0.29	81	58	8.94	18	0.43	2	118
V58382	96	97	0.19	0.43	115	83	9.92	48	0.69	3	148
V58383	97	98	0.08	0.32	98	87	10.28	19	0.44	3	131
V58384	98	99	0.10	0.30	96	85	9.94	20	0.56	3	130
V58385	99	100	0.13	0.36	117	97	9.7	29	0.67	3	117
V58386	100	101	0.08	0.29	72	51	8.08	20	0.45	3	85
V58387	101	102	0.04	0.15	41	29	6.11	11	0.26	2	59
V58388	102	103	0.06	0.41	48	20	5.77	27	0.35	2	74
V58389	103	104	0.12	0.52	50	67	5.97	105	0.5	3	72
V58390	104	105	0.27	0.60	180	23	6.71	46	1.04	3	60
V58391	105	106	0.67	0.92	1,247	45	7.25	75	3.31	4	48
V58392	106	107	0.47	0.62	4,418	27	5.93	44	2.85	11	55
V58393	107	108	1.10	1.61	15,951	45	7.75	131	4.1	19	177
V58394	108	109	0.87	1.54	7,020	98	8.08	102	2.63	11	266
V58395	109	110	0.09	2.07	512	169	11.11	64	0.94	4	235

For personal use only

V58396	110	111	0.31	2.55	2,118	235	11.83	21	1.71	4	119
V58397	111	112	0.32	1.22	955	101	11.95	22	1.29	3	123
V58398	112	113	0.68	1.28	9,611	49	6.79	167	2.61	15	474
V58399	113	114	0.91	1.77	7,276	71	7.91	180	3.6	10	495
V58400	114	115	0.70	1.78	4,735	95	9.94	66	2.78	7	147
V58401	115	116	0.58	1.68	7,215	80	7.26	153	2.95	12	384
V58402	116	117	0.33	1.50	1,359	100	10.34	36	2.22	4	151
V58403	117	118	0.71	2.03	3,723	103	9.07	53	2.65	7	220
V58404	118	119	0.94	2.42	3,917	95	8.73	116	4.11	7	244
V58405	119	120	0.52	1.25	9,541	67	7.84	106	2.29	16	273
V58406	120	121	0.19	1.28	856	78	9.35	39	1.74	4	199
V58407	121	122	0.17	1.15	1,109	72	9.54	68	1.44	4	306
V58408	122	123	0.43	1.61	3,370	57	8.21	207	2.82	7	709
V58409	123	124	0.27	1.44	1,562	48	8.53	125	2.89	4	281
V58410	124	125	0.30	1.33	1,788	65	9.43	115	2.63	5	453
V58411	125	126	0.18	1.29	909	94	10.07	100	1.74	3	250
V58412	126	127	0.55	2.21	4,045	70	7.44	770	3.56	9	513
V58413	127	128	0.14	1.34	580	52	8.39	127	2	3	274
V58414	128	129	0.14	0.76	708	41	7.12	91	1.99	4	126
V58415	129	130	0.02	0.22	102	46	9.52	56	0.46	2	134
V58416	130	131	0.00	0.23	46	56	9.17	12	0.25	4	122
V58417	131	132	0.00	0.07	80	39	8.55	12	0.4	3	111
V58418	132	133	0.00	0.05	48	38	8.43	12	0.17	2	164
V58419	133	134	0.00	0.00	33	37	7.39	10	0.12	2	132
V58420	134	135	0.00	0.10	32	34	6.16	12	0.12	2	112
V58421	135	136	0.00	0.10	34	34	5.98	14	0.15	2	113
V58422	136	137	0.00	0.26	60	136	6.65	14	0.16	4	145
V58423	137	138	0.00	0.08	47	74	6.26	10	0.18	2	113
V58424	138	139	0.00	0.11	30	40	8.15	11	0.17	1	135
V58425	139	140	0.00	0.13	19	43	9.05	16	0.15	1	141
V58426	140	141	0.00	0.13	43	95	10.91	10	0.29	2	147
V58427	141	142	0.00	0.00	44	43	9.07	10	0.43	2	131
V58428	142	143	0.00	0.22	36	40	9.2	33	0.18	1	223
V58429	143	144	0.00	0.07	35	45	9.43	9	0.19	2	135

EL25RC1021

Sample No.	From Depth (m)	To Depth (m)	Au g/t	Ag g/t	As (ppm)	Cu (ppm)	Fe (%)	Pb (ppm)	S (%)	Sb (ppm)	Zn (ppm)
V58434	0	1	0.01	0.08	52	27	4.85	19	0.08	1	98
V58435	1	2	0.01	0.09	60	10	2.49	11	0	0	51
V58436	2	3	0.00	0.10	26	7	1.61	10	0	0	35
V58437	3	4	0.00	0.07	14	4	1.18	9	0	0	25
V58438	4	5	0.00	0.06	18	5	1.58	9	0	0	34
V58439	5	6	0.00	0.08	15	5	1.15	9	0	0	19

For personal use only

V58440	6	7	0.02	0.10	19	3	1.41	14	0	0	43
V58441	7	8	0.01	0.08	16	3	1.39	13	0	0	24
V58442	8	9	0.02	0.14	33	10	1.96	15	0	0	45
V58443	9	10	0.00	0.11	21	6	1.21	11	0	0	39
V58444	10	11	0.00	0.09	41	5	2.41	10	0	0	71
V58445	11	12	0.00	0.08	10	7	1.34	33	0	0	48
V58446	12	13	0.01	0.13	22	3	1.31	48	0	0	96
V58447	13	14	0.00	0.11	15	3	1.61	50	0	0	79
V58448	14	15	0.00	0.16	12	4	1.21	77	0	0	82
V58449	15	16	0.00	0.10	10	2	0.86	59	0	0	66
V58450	16	17	0.01	0.21	23	8	2.26	121	0.09	1	193
V58451	17	18	0.00	0.10	35	17	4.79	20	0.07	1	149
V58452	18	19	0.00	0.09	28	4	1.47	35	0	0	79
V58453	19	20	0.00	0.12	19	4	1.42	73	0.08	0	123
V58454	20	21	0.00	0.10	17	4	1.47	51	0.09	0	99
V58455	21	22	0.00	0.09	14	3	1.55	43	0.1	0	84
V58456	22	23	0.00	0.09	16	3	1.05	54	0.09	0	112
V58457	23	24	0.01	0.11	19	3	1.16	48	0.13	1	106
V58458	24	25	0.00	0.05	8	5	1.3	27	0.06	1	48
V58459	25	26	0.01	0.10	15	4	0.97	49	0.11	1	106
V58460	26	27	0.01	0.06	11	4	1.06	64	0.06	1	77
V58461	27	28	0.00	0.10	48	3	1.21	48	0.11	1	111
V58462	28	29	0.01	0.13	27	7	1.98	21	0.21	1	63
V58463	29	30	0.00	0.09	25	2	2.74	15	0.14	1	55
V58464	30	31	0.01	0.15	43	3	2.87	35	0.28	1	229
V58465	31	32	0.01	0.10	32	3	3.74	28	0.2	1	80
V58466	32	33	0.00	0.07	25	8	8.06	14	0.15	2	91
V58467	33	34	0.01	0.16	42	7	8.07	12	0.41	2	69
V58468	34	35	0.11	0.71	248	15	7.11	54	1.95	4	151
V58469	35	36	0.08	0.65	182	57	7.69	47	1.56	6	91
V58470	36	37	0.02	0.15	51	43	6.47	12	0.2	3	110
V58471	37	38	7.48	2.39	2,284	40	5.09	203	1.45	17	104
V58472	38	39	10.20	3.21	66,293	15	8.08	325	4.73	90	398
V58473	39	40	2.20	0.97	57,784	12	7.17	134	3.41	81	161
V58474	40	41	0.55	0.40	3,147	39	4.98	54	0.7	6	131
V58475	41	42	0.24	0.58	1,687	109	9.58	62	0.83	8	119
V58476	42	43	0.87	2.25	3,056	144	10.8	681	2.78	6	579
V58477	43	44	4.21	1.92	7,352	111	9.82	1048	2.7	11	563
V58478	44	45	0.17	0.75	440	110	11.99	31	0.71	6	118
V58479	45	46	0.17	0.45	369	91	11	28	0.79	5	104
V58480	46	47	0.06	0.30	80	94	12.34	25	0.4	4	130
V58481	47	48	0.06	0.54	131	82	11.39	86	0.52	3	215
V58482	48	49	0.02	0.09	67	83	11.63	7	0.24	4	125

For personal use only

V58483	49	50	0.00	0.13	166	86	10.41	9	0.36	7	124
V58484	50	51	0.09	0.49	136	81	10.97	9	0.67	5	126
V58485	51	52	0.08	0.10	28	62	10.47	7	0.22	4	120
V58486	52	53	0.00	0.00	26	53	10.07	5	0.19	3	113
V58487	53	54	0.00	0.06	19	60	11.08	7	0.19	2	122
V58488	54	55	0.00	0.10	33	56	10.73	17	0.21	2	180
V58489	55	56	0.00	0.05	18	59	10.77	9	0.18	1	155
V58490	56	57	0.00	0.20	135	54	10.53	13	0.25	2	148
V58491	57	58	0.81	0.90	4,161	48	7.61	178	1.44	10	515
V58492	58	59	0.00	0.00	41	46	9.25	10	0.2	1	135
V58493	59	60	0.00	0.06	25	43	9.37	11	0.13	1	141
EL25RC1022											
Sample No.	From Depth (m)	To Depth (m)	Au g/t	Ag g/t	As (ppm)	Cu (ppm)	Fe (%)	Pb (ppm)	S (%)	Sb (ppm)	Zn (ppm)
V58499	0	1	0.00	0.07	37	9	2.27	26	0.05	0	43
V58500	1	2	0.01	0.18	42	16	2.52	149	0.06	1	51
V58501	2	3	0.00	0.10	14	11	2.05	44	0.05	1	34
V58502	3	4	0.01	0.16	49	13	4.86	64	0.06	1	136
V58503	4	5	0.00	0.13	47	11	7.48	16	0.06	1	102
V58504	5	6	0.01	0.17	110	38	8.07	17	0.06	2	137
V58505	6	7	0.01	0.12	126	69	8.68	17	0.1	1	160
V58506	7	8	0.00	0.10	42	80	8.06	6	0.05	1	104
V58507	8	9	0.00	0.00	26	68	10.74	5	0.12	1	132
V58508	9	10	0.00	0.05	29	68	10.65	5	0.07	1	149
V58509	10	11	0.00	0.00	29	61	10.21	4	0.07	1	137
V58510	11	12	0.00	0.05	18	90	11.94	5	0.07	0	148
V58511	12	13	0.00	0.05	35	83	11.24	6	0.08	1	157
V58512	13	14	0.00	0.00	10	78	11.28	5	0.1	0	149
V58513	14	15	0.00	0.00	14	92	12.02	6	0.09	0	162
V58514	15	16	0.00	0.00	15	86	12.62	4	0.12	0	189
V58515	16	17	0.00	0.00	12	58	11.52	5	0.07	0	158
V58516	17	18	0.00	0.00	11	51	10.74	7	0.06	0	132
V58517	18	19	0.00	0.00	8	54	10.79	8	0.18	1	155
V58518	19	20	0.00	0.00	4	48	10.21	8	0.19	0	136
V58519	20	21	0.00	0.00	4	48	10.56	9	0.15	0	140
V58520	21	22	0.00	0.00	6	54	9.72	8	0.13	1	118
V58521	22	23	0.00	0.00	5	46	9.64	8	0.15	0	122
V58522	23	24	0.00	0.00	8	51	10.33	7	0.25	0	138
V58523	24	25	0.00	0.00	7	55	10.48	6	0.2	0	159
V58524	25	26	0.00	0.00	3	46	10.1	8	0.15	0	159
V58525	26	27	0.00	0.00	4	47	9.95	11	0.19	0	168
V58526	27	28	0.00	0.00	5	45	9.8	9	0.15	0	168
V58527	28	29	0.00	0.00	5	47	9.67	9	0.14	1	168

For personal use only

V58528	29	30	0.00	0.00	7	40	8.79	8	0.18	1	113
V58529	30	31	0.00	0.00	6	52	9.39	8	0.17	1	129
V58530	31	32	0.00	0.00	5	43	9.59	9	0.16	1	122
V58531	32	33	0.00	0.00	5	34	8.07	6	0.16	1	108
V58532	33	34	0.00	0.00	12	51	9.35	10	0.17	3	145
V58533	34	35	0.00	0.00	6	54	10.07	8	0.16	1	167
V58534	35	36	0.00	0.06	8	47	10.75	8	0.16	1	177
V58535	36	37	0.00	0.00	6	57	11.05	9	0.15	0	174
V58536	37	38	0.00	0.00	5	54	11.08	9	0.16	0	166
V58537	38	39	0.00	0.00	6	55	11.19	8	0.21	0	170
V58538	39	40	0.00	0.00	5	60	11.48	9	0.16	0	218
V58539	40	41	0.00	0.00	11	60	11.59	8	0.16	0	200
V58540	41	42	0.00	0.00	6	47	11.59	8	0.11	0	187
V58541	42	43	0.00	0.00	9	53	10.71	12	0.21	0	203
V58542	43	44	0.00	0.00	5	68	11.5	11	0.18	0	206
V58543	44	45	0.00	0.00	5	53	11.44	9	0.19	0	175
V58544	45	46	0.00	0.00	5	57	11.39	8	0.17	0	163
V58545	46	47	0.00	0.00	6	63	11.66	9	0.17	0	159
V58546	47	48	0.00	0.00	6	45	10.7	10	0.18	0	149
V58547	48	49	0.00	0.00	4	91	12.09	8	0.24	0	175
V58548	49	50	0.00	0.00	4	85	12.22	8	0.23	0	190
V58549	50	51	0.00	0.06	9	100	12.35	8	0.24	0	160
V58550	51	52	0.00	0.07	8	97	12.14	7	0.19	0	150
V58551	52	53	0.41	0.26	322	89	11.82	16	0.59	2	158
V58552	53	54	0.00	0.00	28	70	11.96	8	0.21	1	145
V58553	54	55	0.00	0.00	10	69	12.03	8	0.22	0	180
V58554	55	56	0.00	0.00	9	78	11.88	9	0.24	0	168
V58555	56	57	0.00	0.00	10	69	11.64	9	0.21	1	142
V58556	57	58	0.00	0.00	11	85	12.19	8	0.28	1	141
V58557	58	59	0.00	0.06	9	72	11.52	8	0.23	1	137
V58558	59	60	0.00	0.06	9	99	11.36	6	0.2	1	140
V58559	60	61	0.00	0.00	13	117	11.74	6	0.34	2	162
V58560	61	62	0.00	0.09	16	123	11.05	11	0.31	5	158
V58561	62	63	0.00	0.10	14	99	10.67	7	0.35	2	122
V58562	63	64	0.00	0.08	14	80	10.93	5	0.32	2	94
V58563	64	65	0.00	0.00	4	7	3.42	20	0.07	0	53
V58564	65	66	0.00	0.00	3	2	1.49	4	0	0	13
V58565	66	67	0.00	0.00	3	5	1.76	6	0.06	0	40
V58566	67	68	0.00	0.00	3	3	1.52	6	0.05	0	13
V58567	68	69	0.00	0.00	5	2	1.61	8	0	0	17
V58568	69	70	0.00	0.00	6	4	1.9	9	0.06	0	30
V58569	70	71	0.01	0.00	26	3	2.36	11	0.08	0	29
V58570	71	72	0.01	0.00	69	3	1.65	16	0.06	0	27

For personal use only

EL25RC1023											
Sample No.	From Depth (m)	To Depth (m)	Au g/t	Ag g/t	As (ppm)	Cu (ppm)	Fe (%)	Pb (ppm)	S (%)	Sb (ppm)	Zn (ppm)
V58575	0	1	0.00	0.08	11	7	1.94	33	0	0	80
V58576	1	2	0.00	0.07	5	3	0.98	16	0	0	56
V58577	2	3	0.00	0.11	5	3	0.92	16	0	0	69
V58578	3	4	0.01	0.20	22	5	1.04	103	0	0	172
V58579	4	5	0.00	0.12	14	5	1.23	51	0	1	104
V58580	5	6	0.01	0.22	29	8	0.86	137	0	0	63
V58581	6	7	0.01	0.30	21	15	1.44	122	0	1	139
V58582	7	8	0.01	0.20	16	6	1.04	128	0	0	162
V58583	8	9	0.01	0.17	15	9	0.91	96	0	0	190
V58584	9	10	0.01	0.21	17	9	0.99	142	0	0	267
V58585	10	11	0.03	0.43	37	10	0.88	401	0	1	409
V58586	11	12	0.01	0.19	10	3	0.73	67	0	0	135
V58587	12	13	0.00	0.12	10	5	1.37	24	0	0	125
V58588	13	14	0.00	0.06	7	3	0.93	24	0	0	61
V58589	14	15	0.00	0.11	12	6	0.87	46	0	0	141
V58590	15	16	0.01	0.16	24	10	1.29	70	0.1	0	150
V58591	16	17	0.01	0.08	17	6	1.26	15	0	0	47
V58592	17	18	0.01	0.11	12	4	0.9	18	0.06	0	65
V58593	18	19	0.01	0.15	22	7	1.38	62	0	0	108
V58594	19	20	0.02	0.22	23	9	1.19	168	0.14	0	305
V58595	20	21	0.01	0.22	14	14	1.12	347	0.21	1	76
V58596	21	22	0.00	0.00	5	4	0.77	56	0.08	0	18
V58597	22	23	0.00	0.06	11	4	1.9	18	0	0	68
V58598	23	24	0.00	0.06	12	6	1.86	20	0.08	0	61
V58599	24	25	0.02	0.38	63	12	1.69	158	0.47	0	211
V58600	25	26	0.02	0.47	67	40	2.04	184	0.55	1	195
V58601	26	27	0.02	0.34	42	18	1.25	212	0.4	1	818
V58602	27	28	0.00	0.05	8	3	0.85	23	0.12	0	48
V58603	28	29	0.00	0.06	17	2	1.84	20	0.09	0	41
V58604	29	30	0.01	0.08	17	6	1.06	22	0.24	1	27
V58605	30	31	0.03	0.99	49	18	1.87	1870	0.75	1	259
V58606	31	32	0.00	0.16	11	10	1.16	158	0.2	1	52
V58607	32	33	0.01	0.12	10	4	0.97	81	0.19	1	58
V58608	33	34	0.02	0.19	31	13	1.03	123	0.32	1	13
V58609	34	35	0.02	0.20	30	48	1.02	30	0.36	1	14
V58610	35	36	0.01	0.11	21	17	1.44	20	0.16	1	20
V58611	36	37	0.00	0.05	26	6	3.12	41	0.07	1	70
V58612	37	38	0.00	0.09	22	5	2.82	13	0.16	1	36
V58613	38	39	0.03	0.15	50	4	6.28	11	0.4	2	51
V58614	39	40	0.42	0.42	113	31	7.2	50	0.75	4	103

For personal use only

V58615	40	41	0.01	0.20	90	106	9.76	16	0.32	15	99
V58616	41	42	0.01	0.17	76	78	8.64	14	0.27	5	81
V58617	42	43	0.00	0.00	29	69	9.93	7	0.26	2	114
V58618	43	44	0.00	0.06	12	64	11.09	8	0.2	1	127
V58619	44	45	0.34	1.30	26	103	10.82	48	0.23	1	161
V58620	45	46	0.00	0.07	11	171	11.54	5	0.26	1	136
V58621	46	47	0.00	0.00	5	82	11.69	5	0.22	0	148
V58622	47	48	0.00	0.00	5	73	11.62	5	0.28	1	151
V58623	48	49	0.00	0.00	4	71	11.65	7	0.19	1	176
V58624	49	50	0.00	0.00	4	59	11.39	5	0.14	1	168
V58625	50	51	0.00	0.00	6	37	9.48	7	0.18	1	126
V58626	51	52	0.00	0.00	3	45	9.81	8	0.12	1	114
V58627	52	53	0.00	0.00	35	41	9.75	7	0.19	2	122
V58628	53	54	0.00	0.00	5	42	10.08	8	0.11	1	127
V58629	54	55	0.00	0.00	4	39	9.99	8	0.16	1	169
V58630	55	56	0.00	0.00	4	47	10.24	9	0.15	1	235
V58631	56	57	0.00	0.00	5	44	9.98	9	0.17	1	171
V58632	57	58	0.00	0.00	7	42	9.46	7	0.24	1	137
V58633	58	59	0.00	0.00	6	45	9.68	8	0.25	1	138
V58634	59	60	0.00	0.00	4	45	9.94	9	0.15	1	158
V58635	60	61	0.00	0.00	8	51	9.92	9	0.19	1	195
V58636	61	62	0.00	0.00	8	45	9.57	8	0.16	1	155
V58637	62	63	0.00	0.00	4	46	9.44	8	0.11	1	171
V58638	63	64	0.00	0.00	4	51	9.44	7	0.16	1	135
V58639	64	65	0.00	0.00	4	48	9.39	7	0.14	1	125
V58640	65	66	0.00	0.07	529	45	8.92	12	0.53	9	118
V58641	66	67	0.00	0.00	11	36	9.01	10	0.2	1	167
V58642	67	68	0.00	0.00	11	46	9.63	8	0.21	1	155
V58643	68	69	0.00	0.00	6	48	10.25	8	0.16	1	175
V58644	69	70	0.00	0.00	4	55	10.93	9	0.2	1	183
V58645	70	71	0.00	0.00	5	55	9.32	7	0.18	0	156
V58646	71	72	0.00	0.00	4	58	11.22	8	0.19	0	180
V58647	72	73	0.00	0.00	4	57	11.07	8	0.25	0	199
V58648	73	74	0.00	0.00	4	105	11.14	12	0.21	0	194
V58649	74	75	0.00	0.00	3	65	11.39	8	0.14	0	166
V58650	75	76	0.00	0.00	5	56	11.33	7	0.22	0	161
V58651	76	77	0.00	0.00	3	58	10.34	9	0.25	0	153
V58652	77	78	0.00	0.00	4	58	11.19	8	0.21	0	161
V58653	78	79	0.00	0.00	5	57	11.46	7	0.16	0	181
V58654	79	80	0.00	0.00	4	58	10.91	7	0.25	0	149
V58655	80	81	0.00	0.00	5	65	11.29	10	0.19	0	167
V58656	81	82	0.00	0.00	3	61	11.4	9	0.18	0	158
V58657	82	83	0.00	0.00	3	59	11.08	7	0.17	0	136

For personal use only

V58658	83	84	0.00	0.00	4	52	10.23	7	0.14	0	134
V58659	84	85	0.00	0.00	4	61	11.16	9	0.22	1	204
V58660	85	86	0.00	0.00	4	59	11.16	8	0.2	0	169
V58661	86	87	0.00	0.00	3	67	11.48	6	0.15	0	165
V58662	87	88	0.00	0.00	10	72	11.41	7	0.26	0	161
V58663	88	89	0.00	0.00	6	58	11.62	7	0.17	0	157
V58664	89	90	0.00	0.00	6	56	11.12	8	0.16	0	165
V58665	90	91	0.00	0.00	10	66	11.71	8	0.2	0	212
V58666	91	92	0.00	0.00	7	83	12.04	9	0.23	0	163
V58667	92	93	0.00	0.00	7	75	12.01	8	0.2	0	156
V58668	93	94	0.00	0.00	7	72	12.31	8	0.23	0	163
V58669	94	95	0.00	0.00	3	68	12.16	7	0.16	0	164
V58670	95	96	0.00	0.00	5	74	11.79	8	0.25	0	155
V58671	96	97	0.00	0.00	3	75	12.35	8	0.19	0	180
V58672	97	98	0.00	0.05	4	79	11.74	7	0.29	0	156
V58673	98	99	0.00	0.00	3	66	12.03	6	0.18	0	154
V58674	99	100	0.00	0.00	4	97	12.24	5	0.34	0	150

EL25RC1024

Sample No.	From Depth (m)	To Depth (m)	Au g/t	Ag g/t	As (ppm)	Cu (ppm)	Fe (%)	Pb (ppm)	S (%)	Sb (ppm)	Zn (ppm)
V58679	0	1	0.00	0.10	9	7	1.91	28	0	0	71
V58680	1	2	0.00	0.08	5	3	1.09	26	0	0	41
V58681	2	3	0.00	0.09	4	7	1.19	25	0	0	35
V58682	3	4	0.00	0.11	6	4	1.83	23	0	1	55
V58683	4	5	0.00	0.12	7	8	1.3	39	0	2	34
V58684	5	6	0.00	0.12	11	9	2.08	27	0	1	63
V58685	6	7	0.00	0.10	10	8	2.19	25	0	0	83
V58686	7	8	0.00	0.14	8	5	1.53	30	0	0	44
V58687	8	9	0.00	0.13	6	3	1.17	39	0	0	34
V58688	9	10	0.00	0.09	8	7	1.64	25	0	0	39
V58689	10	11	0.00	0.06	7	3	1.33	9	0	0	15
V58690	11	12	0.00	0.06	5	3	1.81	8	0	0	21
V58691	12	13	0.00	0.00	5	4	2.31	7	0	0	109
V58692	13	14	0.00	0.09	12	20	3.24	14	0	0	95
V58693	14	15	0.00	0.15	16	26	3.18	22	0	0	104
V58694	15	16	0.00	0.09	10	11	3.05	23	0	0	95
V58695	16	17	0.00	0.07	6	9	3.84	19	0	0	117
V58696	17	18	0.00	0.07	4	14	3.55	19	0	0	108
V58697	18	19	0.00	0.06	5	14	3.69	15	0	0	112
V58698	19	20	0.00	0.09	3	10	2.6	28	0	0	88
V58699	20	21	0.00	0.10	3	8	1.63	45	0	0	56
V58700	21	22	0.00	0.08	4	8	3.47	22	0	0	109
V58701	22	23	0.00	0.07	4	11	2.74	17	0	0	93

For personal use only

V58702	23	24	0.00	0.07	5	12	2.78	25	0	0	86
V58703	24	25	0.00	0.06	4	4	4.16	16	0	0	149
V58704	25	26	0.00	0.08	5	14	3.52	19	0	0	110
V58705	26	27	0.00	0.13	7	29	3.21	18	0.05	0	87
V58706	27	28	0.00	0.11	5	14	3.04	25	0	0	68
V58707	28	29	0.00	0.08	4	8	1.93	30	0	0	57
V58708	29	30	0.00	0.09	5	6	2.08	30	0	0	67
V58709	30	31	0.00	0.14	13	11	2.79	28	0	0	103
V58710	31	32	0.00	0.33	19	16	2.47	30	0.05	0	78
V58711	32	33	0.00	0.17	19	6	2.2	37	0	0	82
V58712	33	34	0.00	0.17	17	10	3.81	26	0	0	112
V58713	34	35	0.00	0.17	23	9	3.6	25	0.06	0	113
V58714	35	36	0.00	0.08	6	4	1.31	34	0	0	48
V58715	36	37	0.00	0.12	6	16	4.43	19	0.06	0	197
V58716	37	38	0.00	0.13	7	16	3.09	31	0.06	0	108
V58717	38	39	0.01	0.22	7	41	2.89	19	0.11	0	87
V58718	39	40	0.00	0.07	5	5	2.12	33	0	0	61
V58719	40	41	0.00	0.10	7	6	1.75	37	0	0	62
V58720	41	42	0.00	0.16	7	14	2.23	33	0	0	79
V58721	42	43	0.00	0.13	9	13	3.02	42	0	0	145
V58722	43	44	0.00	0.12	10	13	2.72	27	0	0	92
V58723	44	45	0.10	0.40	2,376	11	3.41	31	0.41	4	82
V58724	45	46	0.00	0.15	75	8	3	19	0	0	85
V58725	46	47	0.00	0.17	27	16	2.82	21	0.05	0	85
V58726	47	48	0.00	0.07	11	12	3.04	24	0	0	81
V58727	48	49	0.00	0.12	22	36	3.65	19	0.1	0	89
V58728	49	50	0.00	0.11	8	9	2.09	14	0.11	0	48
V58729	50	51	0.01	0.12	15	8	1.44	16	0.22	0	23
V58730	51	52	0.01	0.10	14	5	1.83	13	0.18	0	25
V58731	52	53	0.00	0.00	3	2	0.91	10	0	0	16
V58732	53	54	0.00	0.00	4	2	0.9	11	0.08	0	13
V58733	54	55	0.01	0.14	4	33	1.81	16	0.06	0	47
V58734	55	56	0.00	0.05	4	6	1.32	13	0.05	0	30
V58735	56	57	0.00	0.06	4	8	1.25	13	0.05	0	19
V58736	57	58	0.00	0.06	5	3	1.16	11	0.06	0	14
V58737	58	59	0.00	0.00	4	2	0.82	8	0	0	17
V58738	59	60	0.00	0.11	8	7	1.62	37	0.08	0	71
V58739	60	61	0.00	0.06	8	11	2.81	12	0	0	107
V58740	61	62	0.00	0.00	11	9	2.91	10	0.06	0	57
V58741	62	63	0.00	0.00	6	5	1.13	10	0.07	0	23
V58742	63	64	0.00	0.07	9	5	1.17	29	0.15	0	40
V58743	64	65	0.01	0.13	17	10	2.13	23	0.18	0	217
V58744	65	66	0.01	0.10	13	7	2.22	9	0.15	0	40

For personal use only

V58745	66	67	0.00	0.12	16	8	2.24	8	0.21	1	56
V58746	67	68	0.01	0.07	9	4	0.79	11	0.11	0	13
V58747	68	69	0.00	0.00	4	3	1.05	14	0.07	0	16
V58748	69	70	0.00	0.11	5	3	0.8	19	0.06	0	17
V58749	70	71	0.00	0.09	10	20	1.12	22	0.1	0	19
V58750	71	72	0.00	0.21	33	69	2.23	24	0.2	1	50
V58751	72	73	0.00	0.07	6	6	1.43	23	0	0	49
V58752	73	74	0.00	0.07	8	7	1.72	24	0.05	0	32
V58753	74	75	0.00	0.06	4	4	0.77	20	0	0	13
V58754	75	76	0.00	0.08	6	8	0.73	37	0.07	0	14
V58755	76	77	0.00	0.18	8	4	1.67	18	0	0	32
V58756	77	78	0.00	0.09	7	4	1.3	29	0	0	31
V58757	78	79	0.00	0.08	8	9	1.85	28	0.05	0	48
V58758	79	80	0.00	0.07	10	6	1.89	28	0	0	41
V58759	80	81	0.00	0.06	5	12	1.21	29	0.06	0	27
V58760	81	82	0.00	0.15	51	51	5.67	17	0.21	1	113
V58761	82	83	0.04	0.46	67	10	3.23	187	0.45	1	83
V58762	83	84	0.06	0.39	76	10	1.56	91	0.58	2	31
V58763	84	85	0.04	0.42	54	15	1.66	42	0.45	1	32
V58764	85	86	0.02	0.18	32	5	1.67	20	0.25	1	25
V58765	86	87	0.00	0.07	13	4	0.92	11	0.12	0	14
V58766	87	88	0.00	0.07	14	6	0.93	17	0.15	1	11
V58767	88	89	0.00	0.10	22	10	2.55	17	0.15	1	30
V58768	89	90	0.00	0.00	10	4	1.16	11	0.08	1	12
V58769	90	91	0.01	0.10	22	6	1.18	12	0.34	1	28
V58770	91	92	0.01	0.09	24	3	1.19	9	0.32	1	17
V58771	92	93	0.01	0.07	23	3	1.18	8	0.31	1	15
V58772	93	94	0.01	0.07	22	4	1.09	9	0.28	1	14
V58773	94	95	0.01	0.08	30	3	1.68	8	0.27	1	13
V58774	95	96	0.01	0.08	25	3	1.12	6	0.27	1	10
V58775	96	97	0.02	0.06	28	2	1.19	5	0.36	0	18
V58776	97	98	0.02	0.18	37	38	1.34	7	0.5	1	15
V58777	98	99	0.02	0.06	21	3	0.92	5	0.24	1	8
V58778	99	100	0.01	0.00	25	2	2.97	6	0.17	1	30
V58779	100	101	0.02	0.07	38	1	4.01	6	0.3	1	37
V58780	101	102	0.01	0.00	23	2	2.4	38	0.17	1	21
V58781	102	103	0.11	0.19	64	6	2.75	8	0.49	1	42
V58782	103	104	0.02	0.28	44	53	6.06	10	0.31	2	63
V58783	104	105	0.12	0.39	90	6	3.14	8	0.92	3	28
V58784	105	106	0.33	0.40	191	7	4.1	23	1.27	2	48
V58785	106	107	0.46	0.55	197	6	3.7	13	0.84	2	57
V58786	107	108	6.10	1.94	1,513	22	3.61	30	1.57	4	108
V58787	108	109	9.31	2.40	7,189	34	4.54	45	2.18	13	161

For personal use only

V58788	109	110	6.74	2.23	9,449	39	5.49	33	2.49	14	92
V58789	110	111	5.71	1.86	3,596	24	3.03	89	1.08	6	67
V58790	111	112	0.57	0.40	593	46	6.78	18	0.53	3	89
V58791	112	113	1.41	0.70	602	78	8.4	59	0.66	2	160
V58792	113	114	1.05	0.41	667	79	9.5	27	0.81	3	139
V58793	114	115	0.92	0.73	420	26	10.79	123	0.41	2	144
V58794	115	116	0.22	0.16	94	74	11.29	38	0.3	1	115
V58795	116	117	0.19	0.39	104	62	11.78	16	0.28	1	106
V58796	117	118	0.24	0.22	134	91	11.29	14	0.43	1	103
V58797	118	119	0.06	0.19	60	62	11.39	8	0.21	1	108
V58798	119	120	0.59	0.42	222	107	11.25	16	0.94	1	119
V58799	120	121	4.70	4.82	206	119	11.43	97	0.75	1	362
V58800	121	122	8.93	1.47	229	78	10.92	133	0.94	1	244
V58801	122	123	6.95	3.25	701	73	10.94	105	0.44	1	150
V58802	123	124	0.22	0.16	122	50	9.68	15	0.22	1	112
V58803	124	125	0.46	0.22	4,841	43	10.4	14	0.68	4	115
V58804	125	126	0.18	0.26	162	60	10.6	13	0.39	1	119
V58805	126	127	0.97	0.44	1,566	51	9.52	18	1.07	2	143
V58806	127	128	1.06	0.24	1,302	43	10.99	11	0.59	2	129
V58807	128	129	0.03	0.00	62	44	10.5	6	0.16	0	121
V58808	129	130	0.14	0.14	88	60	10.4	8	0.37	1	119
V58809	130	131	0.11	0.05	50	48	10.46	7	0.19	0	114
V58810	131	132	0.11	0.06	42	49	10.09	11	0.19	0	138
V58811	132	133	0.07	0.08	353	47	10.03	8	0.26	1	155
V58812	133	134	0.01	0.00	45	51	10.19	8	0.18	1	142
V58813	134	135	0.01	0.00	25	42	10.08	7	0.14	0	136
V58814	135	136	0.02	0.05	25	48	9.41	7	0.17	0	119
V58815	136	137	0.08	0.13	180	43	9.77	9	0.26	1	130
V58816	137	138	0.79	0.57	1,487	47	9.43	20	1.04	2	132
V58817	138	139	0.32	0.14	624	55	9.76	13	0.48	1	149
V58818	139	140	3.51	0.87	2,555	45	8.38	68	0.88	3	128

For personal use only

Appendix 3: Electric Light JORC 2012 TABLE 1

Section 1 Sampling Techniques and Data

Criteria	JORC Code explanation	Commentary
Sampling techniques	<ul style="list-style-type: none"> Nature and quality of sampling (e.g. cut channels, random chips, or specific specialised industry standard measurement tools appropriate to the minerals under investigation, such as down hole gamma sondes, or handheld XRF instruments, etc). These examples should not be taken as limiting the broad meaning of sampling. Include reference to measures taken to ensure sample representivity and the appropriate calibration of any measurement tools or systems used. In cases where 'industry standard' work has been done this would be relatively simple (e.g. 'reverse circulation drilling was used to obtain 1 m samples from which 3 kg was pulverised to produce a 30 g charge for fire assay'). 	<ul style="list-style-type: none"> Soil sampling, surface rock chips and surface and down hole geophysical surveys were all undertaken at various stages of exploration. The data has been superseded by drilling data and is therefore not included in this announcement though the work is summarised in Section 2. The RC holes were sampled at 1m intervals using a cone splitter attached to the cyclone No composite samples were submitted Individual RC samples were collected in numbered calico bags, and then placed in large poly-weave sacks for dispatch to the laboratory in Townsville Each laboratory submitted sample weighed between 3kg to 5 kg Samples were submitted to Intertek Laboratories in Townsville Backup samples for each interval were also collected and retained on site until assays results have been returned or if required for further testwork.
Drilling techniques	<ul style="list-style-type: none"> Drill type (e.g. core, reverse circulation, open-hole hammer, rotary air blast, auger, Bangka, sonic, etc) and details (e.g. core diameter, triple or standard tube, depth of diamond tails, face-sampling bit or other type, whether core is oriented and if so, by what method, etc). 	<ul style="list-style-type: none"> The drilling was undertaken using a DR950 Reverse Circulation Rig from AED The hole size was 5.5 inch and a face sampling hammer was used Surveys were taken at the base of each hole
Drill sample recovery	<ul style="list-style-type: none"> Method of recording and assessing core and chip sample recoveries and results assessed. 	<ul style="list-style-type: none"> For RC drilling, recovery can be monitored by observing the consistency of the amount of drill chips produced for each 1m sample.

For personal use only

Criteria	JORC Code explanation	Commentary
		<ul style="list-style-type: none"> Apart from the first 1 or 2 samples at the top of each hole, the same amount of material was produced per 1 meter sample, with the samples consistently weighing between 3 to 4 kg. Samples were drilled dry with only one sample recorded as wet The strong silicification of the rhyolitic host rocks has resulted in more competent rock and better drilling conditions at Electric Light
	<ul style="list-style-type: none"> Measures taken to maximise sample recovery and ensure representative nature of the samples. 	<ul style="list-style-type: none"> The samples were collected using a face sampling hammer, the samples after going through the cyclone went through a splitter, with 12.5% of the sample collected in a numbered calcio bag, the balance of the sample was collected in a green plastic bag, which has been retained on site The face sampling hammer provides an uncontaminated sample and the splitter ensures that there is no sample bias in the collection of the sample
	<ul style="list-style-type: none"> Whether a relationship exists between sample recovery and grade and whether sample bias may have occurred 	<ul style="list-style-type: none"> There is no sample bias and there is no relationship between observed recovery and assay grade
Logging	<ul style="list-style-type: none"> Whether core and chip samples have been geologically and geotechnically logged to a level of detail to support appropriate Mineral Resource estimation, mining studies and metallurgical studies. Whether logging is qualitative or quantitative in nature. Core (or costean, channel, etc) photography. The total length and percentage of the relevant intersections logged. 	<ul style="list-style-type: none"> Geological logs were completed for all drill holes by an experienced geologist at a level to support appropriate mineral resource estimation The lithology, weathering, oxidation colour, grainsize, texture, alteration, vein material were recorded on a paper log sheet which was then transferred to a digital log sheet for inclusion in the company's database Logging of mineralisation and veining in the diamond core and the RC chips was quantitative Quarter core from the PQ core was retained on site for reference, with quarter core submitted to a laboratory for assay and half core collected for metallurgical testwork The core was photographed prior to being cut Representative chips from each drill hole interval were placed in numbered chip trays and the chip trays were photographed Each 1m interval was logged
Sub-sampling techniques and sample preparation	<ul style="list-style-type: none"> If core, whether cut or sawn and whether quarter, half or all core taken. 	<p>There are no results from core drilling reported in this document</p>
	<ul style="list-style-type: none"> If non-core, whether riffled, tube sampled, rotary split, etc and whether sampled wet or dry. 	<ul style="list-style-type: none"> The samples were drilled dry, except for a one meter interval in hole EL25RC1019 between 102 to 103m which was wet The samples were collected from a splitter which was attached to the cyclone on the drill rig 12.5% of the sample split was retained for assay, with the remaining 87.5% of the collected in large green plastic bags
	<ul style="list-style-type: none"> For all sample types, the nature, quality and appropriateness of the sample preparation 	<ul style="list-style-type: none"> The SVG drill samples were a 12.5% split from a splitter attached to the cyclone, samples typically weighed between 3 to 4 kg and the sample was sent to an accredited laboratory for analysis.

Criteria	JORC Code explanation	Commentary
	<p><i>technique.</i></p> <ul style="list-style-type: none"> <i>Quality control procedures adopted for all sub-sampling stages to maximise representivity of samples.</i> <i>Measures taken to ensure that the sampling is representative of the in situ material collected, including for instance results for field duplicate/second-half sampling.</i> <i>Whether sample sizes are appropriate to the grain size of the material being sampled.</i> 	<ul style="list-style-type: none"> The samples were despatched to Intertek Laboratories in Townsville, North Queensland. The samples were dried, crushed and pulverised as per industry standard practise. The sample preparation technique is appropriate for the style of mineralisation being analysed The samples were pulverised to -75 microns and analysed for gold by fire assay (FA50/OE) and also for multi elements using the 4A/MS methodology One to three duplicate samples were submitted per hole and submitted to Intertek for analysis along with the original sample The number of duplicates per hole was dependent on the hole depth A Blank and two standards were submitted with each sample batch Intertek also used their own standards and ran duplicate samples on SVG's submitted samples duplicates The duplicate standards returned results that fall within industry standards for the type and style of mineralisation reported The RC samples which are a 12.5% split of the entire samples weighed between 3 to 4kgs, this is considered appropriate by the CP The sample size is appropriate considering the grain size of the material, as well as the style of mineralisation being analysed.
<p>Quality of assay data and laboratory tests</p>	<ul style="list-style-type: none"> <i>The nature, quality and appropriateness of the assaying and laboratory procedures used and whether the technique is considered partial or total.</i> <i>For geophysical tools, spectrometers, handheld XRF instruments, etc, the parameters used in determining the analysis including instrument make and model, reading times, calibrations factors applied and their derivation, etc.</i> <i>Nature of quality control procedures adopted (e.g. standards, blanks, duplicates, external laboratory checks) and</i> 	<ul style="list-style-type: none"> The method employed to assay SVG's samples is industry standard and considered appropriate for the style of deposit and elements being assayed Sample preparation and assaying was Intertek in Townsville which is an ISO/IEC 17025 accredited laboratory Samples were assayed for gold using the Au FA50/OE methodology and for multi-element analysis using the MS/4A method, both of these methodologies are industry standard No geophysical tools were used. One to three duplicate samples were submitted per hole and submitted to Intertek for analysis along with the original sample The number of duplicates per hole was dependent on the hole depth

Criteria	JORC Code explanation	Commentary
	<i>whether acceptable levels of accuracy (i.e. lack of bias) and precision have been established</i>	<ul style="list-style-type: none"> A Blank and two standards were submitted with each sample batch Intertek also used their own standards and ran duplicate samples on SVG's submitted samples duplicates The duplicate standards returned results that fall within industry standards for the type and style of mineralisation reported
Verification of sampling and assaying	<ul style="list-style-type: none"> <i>The verification of significant intersections by either independent or alternative company personnel.</i> 	<ul style="list-style-type: none"> All assay data received including significant intercepts are reviewed by at least 2 appropriately qualified persons for validation purposes. All reported significant intercepts are verified by at least 2 appropriately qualified persons
	<ul style="list-style-type: none"> <i>The use of twinned holes.</i> 	<ul style="list-style-type: none"> No holes were twinned by the RC holes detailed in this document
	<ul style="list-style-type: none"> <i>Documentation of primary data, data entry procedures, data verification, data storage (physical and electronic) protocols.</i> 	<ul style="list-style-type: none"> SVG has collated and created a digital database of all exploration completed at the project which contains all of the historical drill hole data
	<ul style="list-style-type: none"> <i>Discuss any adjustment to assay data.</i> 	<ul style="list-style-type: none"> No adjustment of assay data was considered necessary.
Location of data points	<ul style="list-style-type: none"> <i>Accuracy and quality of surveys used to locate drill holes (collar and down-hole surveys), trenches, mine workings and other locations used in Mineral Resource estimation.</i> 	<ul style="list-style-type: none"> All drill hole locations were surveyed using a hand held GPS with a +/- 5m accuracy. The coordinate system used is Geocentric Datum of Australia (GDA202) Map Grid of Australia (MGA) zone 54 A table of drill hole parameters is included as Table 1 in the document. A drill hole location map has also been included as Figure 2 in the document
	<ul style="list-style-type: none"> <i>Specification of the grid system used.</i> 	<ul style="list-style-type: none"> All data has been converted to MGA 94 (Zone 54). Elevation values are in AHD RL
	<ul style="list-style-type: none"> <i>Quality and adequacy of topographic control.</i> 	<ul style="list-style-type: none"> The Quality of the topographic control data is reliant on public domain topographic data. GPS readings with a +5m accuracy were used to survey in the drill holes
Data spacing and distribution	<ul style="list-style-type: none"> <i>Data spacing for reporting of Exploration Results.</i> 	<ul style="list-style-type: none"> Due to the exploratory nature of the drilling, spacing varied between 40m to 120m between holes (see drill hole map included as Figure 2 in the document)
	<ul style="list-style-type: none"> <i>Whether the data spacing and distribution is sufficient to establish the degree of geological and grade continuity appropriate for the Mineral</i> 	<ul style="list-style-type: none"> An Inferred Mineral Resource has been reported for Electric Light, the details of which are included in the report. The drilling is of sufficient density and the geology has the appropriate continuity to be used in an update of the Mineral Resource

Criteria	JORC Code explanation	Commentary
	<p><i>Resource and Ore Reserve estimation procedure(s) and classifications applied.</i></p> <ul style="list-style-type: none"> • <i>Whether sample compositing has been applied.</i> 	<ul style="list-style-type: none"> • No sample compositing has been carried out.
Orientation of data in relation to geological structure	<ul style="list-style-type: none"> • <i>Whether the orientation of sampling achieves unbiased sampling of possible structures and the extent to which this is known, considering the deposit type.</i> 	<ul style="list-style-type: none"> • Where possible the drill holes were orientated to intersect the mineralised target perpendicular to strike • The holes were designed to intersect the mineralisation perpendicular to strike and at 90 degrees to the dip to obtain true intercept thicknesses
	<ul style="list-style-type: none"> • <i>If the relationship between the drilling orientation and the orientation of key mineralised structures is considered to have introduced a sampling bias, this should be assessed and reported if material.</i> 	<ul style="list-style-type: none"> • Drilling orientations are considered appropriate to the mineralisation type with no bias observed as a result of the drill orientation. • At this stage no sampling bias is considered to have been introduced in the sampling undertaken to date
Sample security	<ul style="list-style-type: none"> • <i>The measures taken to ensure sample security.</i> 	<ul style="list-style-type: none"> • The chain of custody is managed by the project geologist who generally dispatches the sample bags directly from site to the lab by an authorised company representative • No third party was involved with the handling of the samples, with a company representative delivering the samples to the Townsville Laboratory
Audits or reviews	<ul style="list-style-type: none"> • <i>The results of any audits or reviews of sampling techniques and data.</i> 	<ul style="list-style-type: none"> • SVG's Exploration manager visited the project site at the start of the drilling programme and reviewed sampling methodologies and data capture with the project geologists overseeing the drilling programme.

Section 2: Reporting Exploration Results

Criteria	JORC Code explanation	Commentary
Mineral tenement and land tenure status	<ul style="list-style-type: none"> • <i>Type, reference name/number, location and ownership including agreements or material issues with third parties such as joint ventures, partnerships, overriding royalties, native title interests, historical sites, wilderness or national park and environmental settings.</i> <i>Are</i> 	<ul style="list-style-type: none"> • The Electric Light project lies within ML 3548 and EPM 8545 – Electric Light. This EPM and ML are part of the 17 EPMS and 17 MLs which comprise Savannah Goldfield's Etheridge Project • EPM8545 and ML3548 are held by Kempton Minerals Pty Ltd, a 100% owned subsidiary of Savannah Goldfields Ltd • The tenements are in good standing • For all the tenements which comprise the Etheridge Project refer to the tenement table in the company's Annual Report dated 20 December 2024 • Savannah has a current Native Title Compensation Agreement and a CHMA with the determined Native Title group for all activities within EPM 8545 and a Conduct and Compensation Agreements has

Criteria	JORC Code explanation	Commentary
	<ul style="list-style-type: none"> <i>The security of the tenure held at the time of reporting along with any known impediments to obtaining a licence to operate in the area.</i> 	<p>recently been finalised with the relevant landowners</p> <ul style="list-style-type: none"> The tenements are 100% owned by a subsidiary of SVG, and there are no impediments to operating in this area
<p>Exploration done by other parties</p>	<ul style="list-style-type: none"> <i>Acknowledgment and appraisal of exploration by other parties</i> 	<ul style="list-style-type: none"> Several companies have explored on EPM8545 in the past, including CastleGold Pty Ltd, Sedimentary Holdings Ltd in JV with Renison Goldfields Consolidated (RGC) and later in JV with Gold Fields Ltd, Plentex Pty Ltd, and Deutsche Rohstoff Australia Pty Ltd. Exploration surrounding EPM8545 has been conducted by Newcrest Mining Ltd, Keela Wee Exploration Ltd, Sedimentary Holdings Ltd and Kidston Gold Mines Pty Ltd. Early work in the area by companies including Pechiney Exploration, Minatome, Drawmac Holdings, Eastment Minerals, CRAE, Teton Exploration Drilling was focussed on uranium mineralisation associated with the Newcastle Range Volcanics. Work resulted in definition of two small areas of uranium mineralisation at Twogee and Trident Prospects (which lie east of EPM8545) both of which were considered too low in grade and tonnage to progress to viable mining options. Modern exploration commenced at Electric Light in 1985 when CastleGold acquired the area under ATP3908. CastleGold held a significant number of permits in the area and work focused quickly on Electric Light and included several rounds of drilling between 1985-1986 (CR15560, CR15563) which further defined mineralisation. CastleGold also prospected numerous areas for alluvial gold including Sefton and Daniel Creeks. The Delaney Fault became a focus for exploration of Electric Light analogues and this led to the discovery of the Delaney prospect 1km north. Keela Wee did several rounds of drilling at Delaney Prospect which returned several significant results but overall considered the prospect uneconomic in the existing economic climate at the time. During the 1990's work was focused on gold mineralisation along the Delaney Fault. Companies included Sedimentary Holdings, CastleGold and Keela Wee but work throughout the area was dominated by Union Mining and Kidston Goldmines. Most work completed in and around EPM8545 was focused on Electric Light where an indicated resource of 994Kt at 2.3g/t Au for 74Koz, at a cut-off grade of 0.5g/t Au with a top cut of 39g/t Au was defined in 1996. During the 2000's Electric Light and the Delaney Fault continued to be the focus of further gold exploration by companies including Mega, GML, Plentex, Union Mining, KGM and DRAU. Work in

Criteria	JORC Code explanation	Commentary
		<p>and around EPM8545 continued to be focused on Electric Light and the Delaney Fault with only minor stream, rock and soil samples completed outside ML3548. Electric Light was mined by DRAU in 2010-2011 and work since this time has focused on the extensions along strike and down dip at Electric Light.</p>
Geology	<ul style="list-style-type: none"> • <i>Deposit type, geological setting and style of mineralisation.</i> 	<ul style="list-style-type: none"> • The type of mineralisation observed at Electric Light, is a brecciated rhyolite within the Delaney fault zone. The Delaney fault is a north south trending fault which at Electric Light forms the boundary of a granite to the east and metasediments to the west. The mineralised rhyolite has been intruded in the faults zone. Propylitic alteration and sericite alteration are associated with the rhyolite intrusive. The mineralised rhyolite comprises sulphide mineralisation in the form of galena, sphalerite, arsenopyrite and associated gold and silver mineralisation. • The mineralised zone one the west and a strongly altered granite to the east
Drill hole Information	<ul style="list-style-type: none"> • <i>A summary of all information material to the understanding of the exploration results including a tabulation of the following information for all Material drill holes:</i> <ul style="list-style-type: none"> ○ <i>easting and northing of the drill hole collar</i> ○ <i>elevation or RL (Reduced Level – elevation above sea level in metres) of the drill hole collar</i> ○ <i>dip and azimuth of the hole</i> ○ <i>down hole length and interception depth</i> ○ <i>hole length.</i> • <i>If the exclusion of this information is justified on the basis that the information is not Material and this exclusion does not detract from the understanding of the report, the Competent Person should clearly explain why this is the case.</i> 	<ul style="list-style-type: none"> • All the drill hole information is listed in the GDA Z54 format • The data is included in the document in Table 2 and Appendix 2
Data aggregation methods	<ul style="list-style-type: none"> • <i>In reporting Exploration Results, weighting averaging techniques, maximum and/or minimum grade truncations (e.g. cutting of high grades) and cut-off grades are usually Material and should be stated.</i> • <i>Where aggregate intercepts incorporate short lengths of high grade results and longer lengths of</i> 	<ul style="list-style-type: none"> • No capping of high grades was performed. No aggregation of data was performed. • No metal equivalents are reported • The intercepts reported were calculated using a 0.3 g/t Au COG with a maximum of 2m of internal dilution

Criteria	JORC Code explanation	Commentary
	<p><i>low grade results, the procedure used for such aggregation should be stated and some typical examples of such aggregations should be shown in detail.</i></p> <ul style="list-style-type: none"> • <i>The assumptions used for any reporting of metal equivalent values should be clearly stated.</i> 	
Relationship between mineralisation widths and intercept lengths	<ul style="list-style-type: none"> • <i>These relationships are particularly important in the reporting of Exploration Results.</i> • <i>If the geometry of the mineralisation with respect to the drill hole angle is known, its nature should be reported.</i> 	<ul style="list-style-type: none"> • The apparent thickness of each intercept has been reported • The holes drilled were at -60 degrees, the mineralised zone was mapped as predominantly dipping at -60 and the holes would have intersected the mineralised zone perpendicular to strike • Each hole was sited on the hanging wall side of the mineralised shear
	<ul style="list-style-type: none"> • <i>If it is not known and only the down hole lengths are reported, there should be a clear statement to this effect (e.g. 'down hole length, true width not known').</i> 	<ul style="list-style-type: none"> • Apparent thickness and actual thicknesses have been reported
Diagrams	<ul style="list-style-type: none"> • <i>Appropriate maps and sections (with scales) and tabulations of intercepts should be included for any significant discovery being reported. These should include, but not be limited to a plan view of drill hole collar locations and appropriate sectional views.</i> 	<ul style="list-style-type: none"> • A plan of the drill hole locations and a table listing the coordinates of the drill holes, their depths, dip and azimuth is included in the document, (Figure 2 Table 1).
Balanced reporting	<ul style="list-style-type: none"> • <i>Where comprehensive reporting of all Exploration Results is not practicable, representative reporting of both low and high grades and/or widths should be practiced to avoid misleading reporting of Exploration Results.</i> 	<ul style="list-style-type: none"> • Balance reporting of Exploration Results has been presented in this document
Other substantive exploration data	<ul style="list-style-type: none"> • <i>Other exploration data, if meaningful and material, should be reported including (but not limited to): geological observations; geophysical survey results; geochemical survey results; bulk samples – size and method of treatment; metallurgical test results; bulk density, groundwater, geotechnical and rock characteristics; potential deleterious or contaminating substances.</i> 	<ul style="list-style-type: none"> • The project includes drill hole data collected by previous companies including surface geochemical data and drill hole data. Most of this data has been captured by SVG in their GIS database • There is no additional exploration data that is considered to be material to this report
Further work	<ul style="list-style-type: none"> • <i>The nature and scale of planned further work (e.g. tests for lateral extensions or depth extensions or large-scale step-out drilling).</i> 	<ul style="list-style-type: none"> • Planned further work will include possible infill drilling adjacent to high grade intercepts • Extension drilling along strike of the defined mineralised zone

Criteria	JORC Code explanation	Commentary
	<ul style="list-style-type: none"> <i>Diagrams clearly highlighting the areas of possible extensions, including the main geological interpretations and future drilling areas, provided this information is not commercially sensitive.</i> 	<ul style="list-style-type: none"> The mineral resource estimate will be updated based on the new assay information Metallurgical testwork These are shown in Figures 3,4 and 5 Additional drilling is expected to be planned based on these exploration results

For personal use only