

ASX Announcement

29 January 2026

Geophysical Surveys Extends Polymetallic System (*Copper, Gold, Silver, Zinc and Lead*) to ~ 1km at Kitumba Project

HIGHLIGHTS:

- Geophysical surveys extend anomaly strike from 400m to ~1km for the Company's newly discovered Polymetallic System (Target B1) within Kitumba 27715, Zambia.
- Target B1 Polymetallic System remains open laterally and along strike, with geophysics confirming mineralised signatures to at least ~100m depth (true depth to be confirmed by drilling).
- High-resolution follow-up ground magnetics and Induced Polarization (I.P.) surveys completed over a 60-hectare extension, increasing total coverage at Target B1 to 90-hectares.
- Previously reported Phase 1 assays confirmed copper, gold, silver, zinc and lead mineralisation across a 200m strike, with Phase 2 trench samples submitted for assay.
- Results support progression toward initial drill testing to validate depth and strike extensions, subject to trench assay results and final data interpretation.

Patriot Resources Limited ("Patriot", "PAT" or the "Company") is pleased to announce the successful completion of Phase 2 geophysical surveys (*ground magnetics and I.P.*) and trenching at Target B1 within its 80% owned Kitumba 27715 project ("Kitumba" or the "Project") in Zambia. The results further strengthen confidence in the scale and continuity of the Target B1 polymetallic system.

Phase 2 geophysical survey was recommended following open-ended anomalies identified after Phase 1 work (refer announcement dated 26 November 2025 and 13 January 2026). The Phase 2 trenching program was proposed after Phase 1 work combined with geophysics showed potential for lateral and strike extension of the polymetallic geochemical system (*Cu, Au, Ag, Zn, and Pb*) at Target B1, supporting progression toward refined drill targeting.

For personal use only



www.patriotresources.com.au



Suite 6, 245 Churchill Avenue
Subiaco WA 6008



info@patriotresources.com.au



+61 (0) 413 621 652

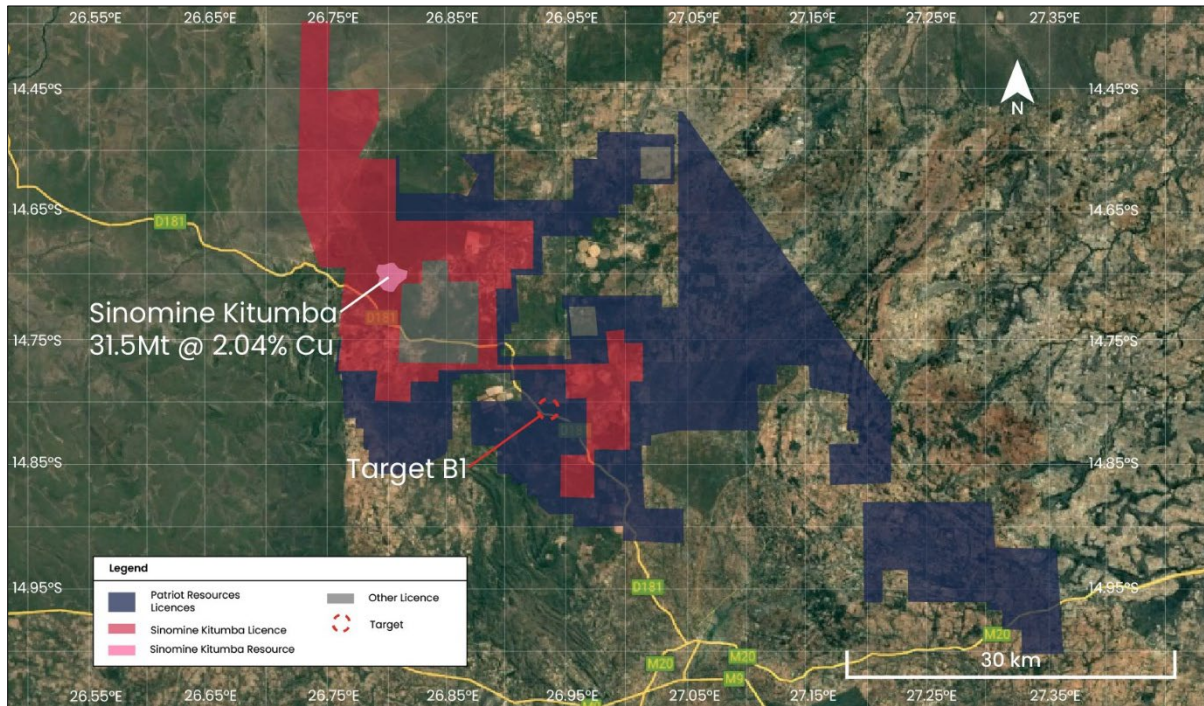


Figure 1: Map showing Location of Target B1 and Patriot licence package relative to Sinomine Kitumba

WORK DONE (Phase 2)

Geophysics

Ground magnetics and I.P. surveys were successfully conducted on a 60-hectare block extension bringing total coverage to 90-hectares over Target B1. For ground magnetics a total of 11.4-line Km at 25m spacing was surveyed using a G5 Geotron magnetometer, oriented East to West. For I.P. survey, a total of 2.6-line Km (7 lines) was surveyed at 10m spacing for both chargeability and resistivity. High resolution magnetics and I.P. data was processed immediately after using advanced geoscientific software.

Trenching

Approximately 301m was trenched using a JCB Backhaul loader across 4 trenches bringing cumulative total to 645m. Excavation was approximately 1.6m deep (to bedrock), 1m wide and 93m length. All the trenches were mapped and sampled after completion with samples now at the analytical lab and results expected this quarter. Channel samples were collected continuously along the trench at meter intervals.





Figure 2: JCB Backhaul loader excavating trench TBTR05



Figure 3: Channel Sampling on TBTR06

FIELD INTERPRETATION

Signature anomalies of low magnetic, high chargeable and resistive zones were mapped during Phase 2 signaling possible lateral and strike extension of the associated polymetallic mineralised system. Approximately 1km of strike has been established based on consistent anomalous signatures. Interpreted depths range from surface down to ~100m, with widths varying from 10m-45m with a high possibility that these zones could extend below 100m, beyond the capacity of the survey equipment used.

Phase 2 trench work focused on investigating one of the two parallel structures previously identified via geophysical survey (*western structure*), see Figure 6 below. Trench mapping identified strongly limonitic, carbonated and silicified zones similar to observations made during Phase 1 work on the main zone (*central*). These zones are steeply dipping and oriented roughly N-S to slightly NW-SE with varying widths between 20m-40m.



The host rock is sandstone and mudstone with intercalations of shale and quartzite. These trench observations coincide with low magnetic, high chargeability and resistive anomalies recorded from past and present geophysical surveys.

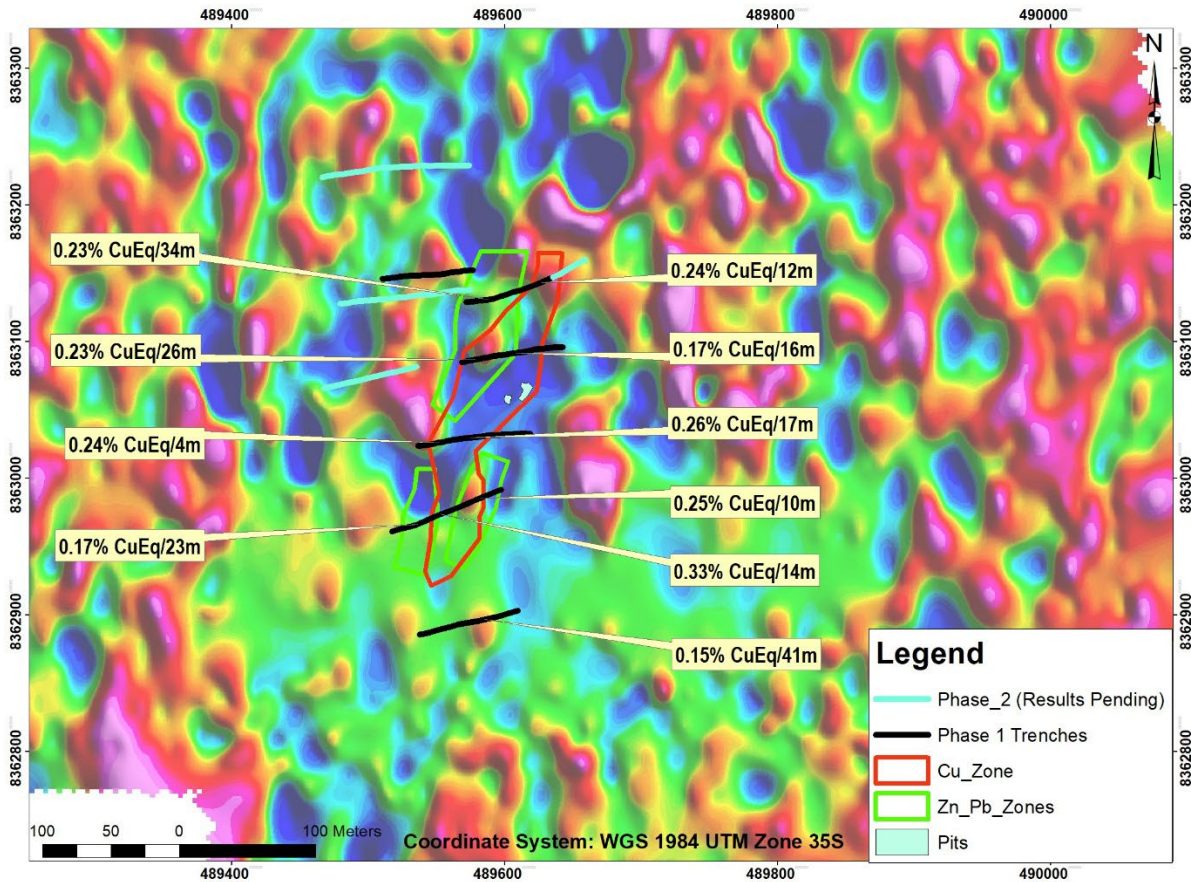


Figure 4: Reduced to Pole map (RTP) showing trench positions



For personal use only

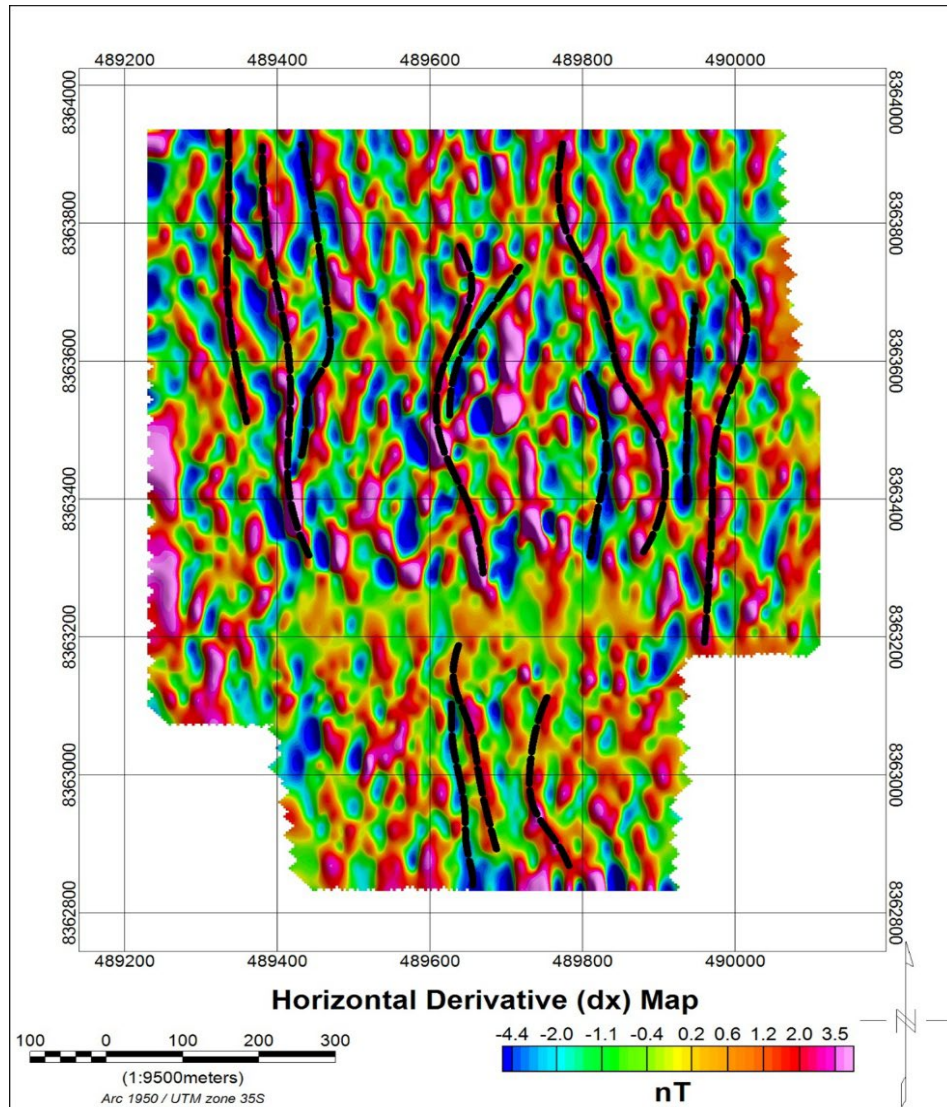


Figure 5: Horizontal derivative map showing approximately N-S structural trend



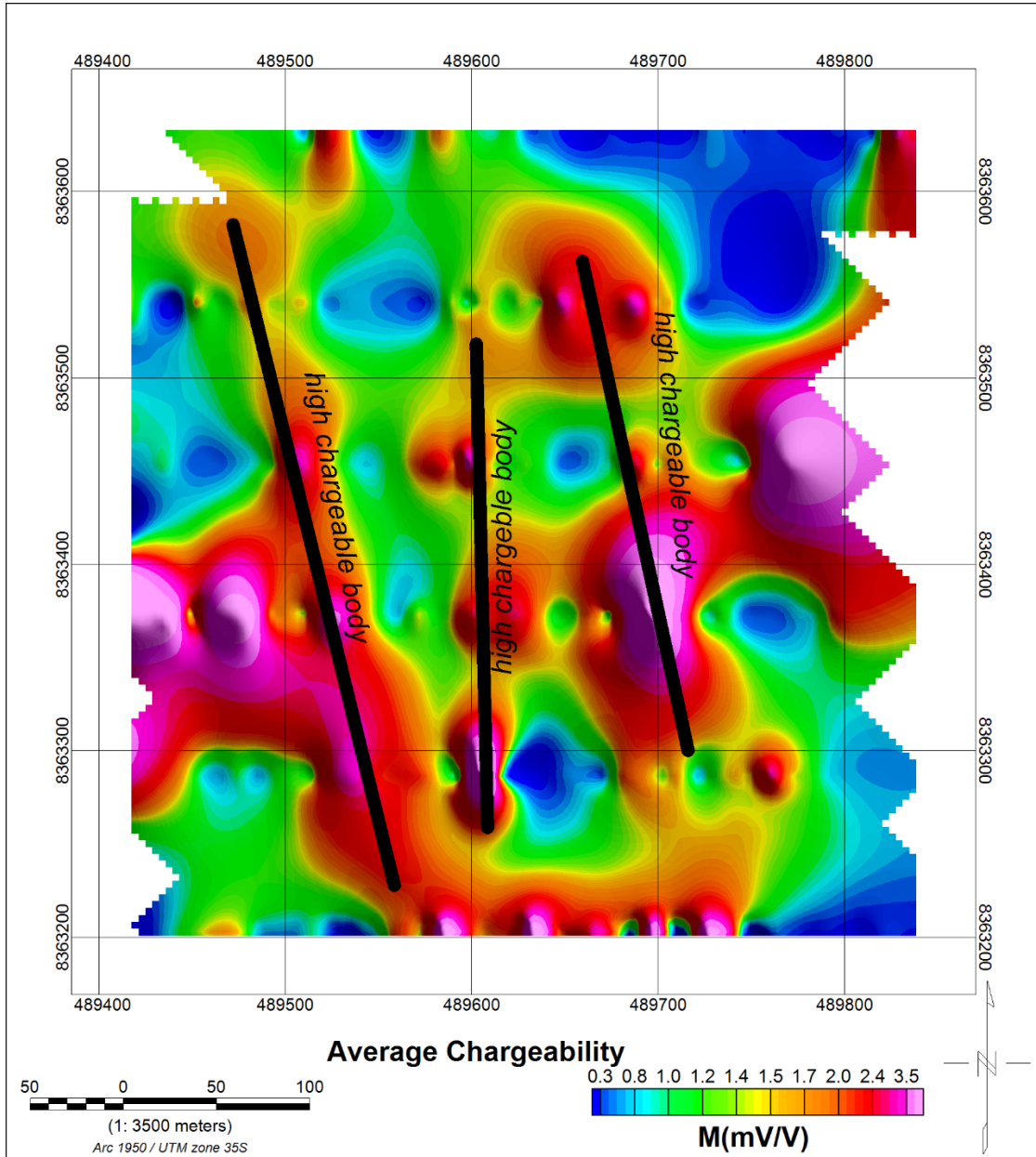


Figure 6: Highly chargeable parallel zones identified during Phase 1



For personal use only

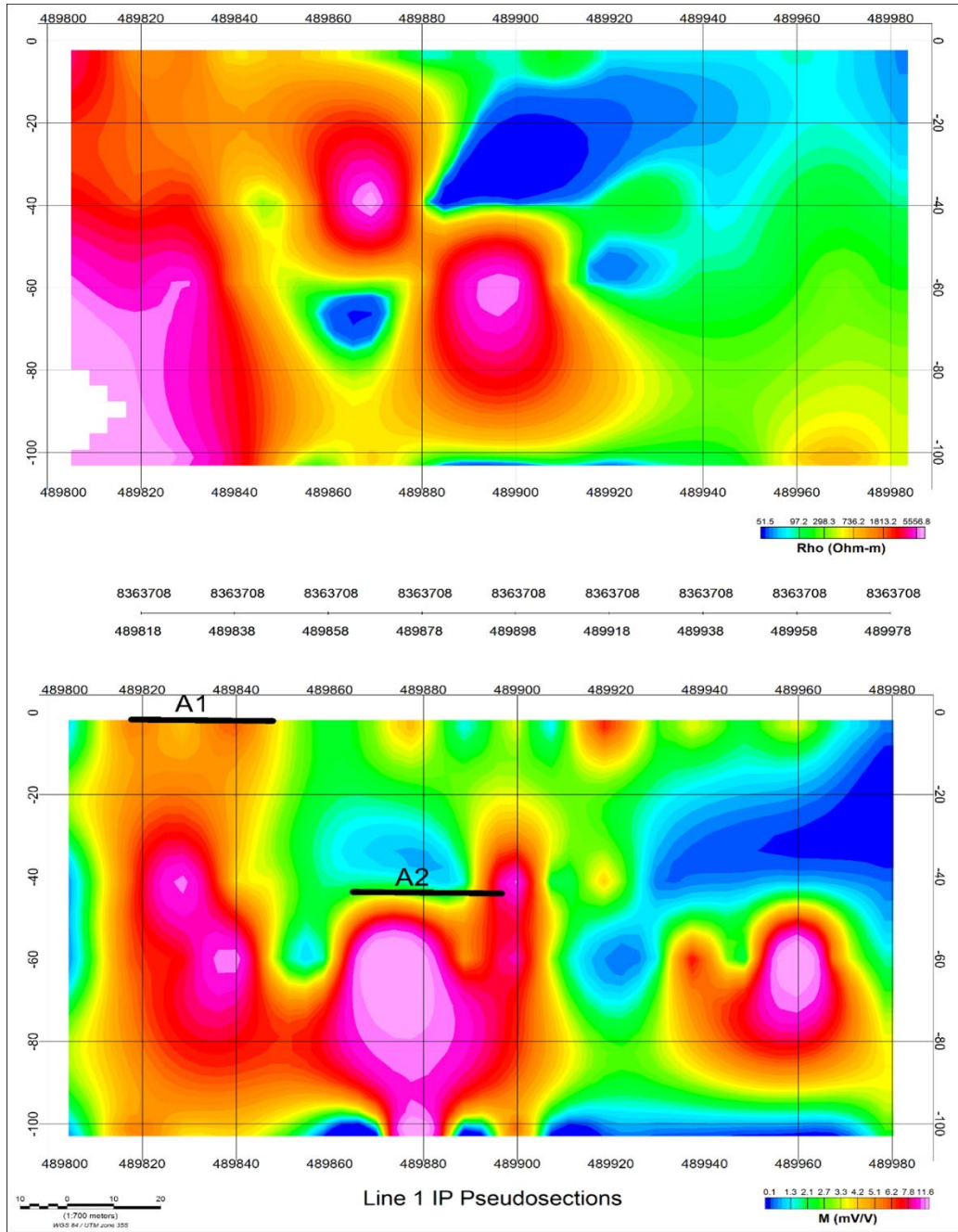


Figure 7: Line 1-I.P. Pseudo-section showing a 40m wide high chargeable zone(A2) at 40m down to 100m depth (furthest line- northern extension)



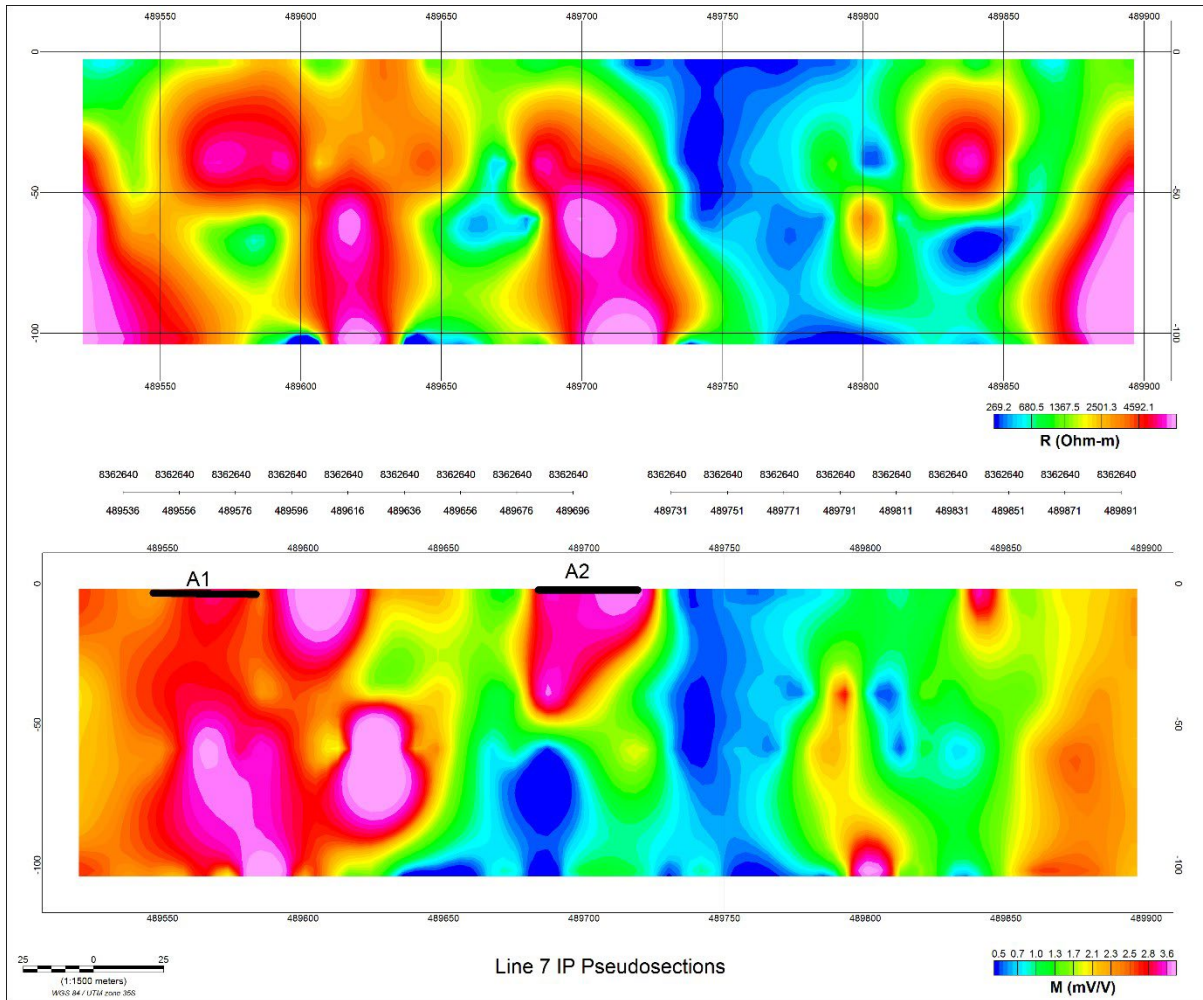


Figure 8: Line 7 I.P. pseudo section showing high chargeable zones (A1 and A2) coinciding with high resistivity (furthest line- southern extension)

NEXT STEPS

- Receive trench assays.
- Data processing and Interpretation.
- Design a drill programme to test and validate extensions of these zones at depths exceeding the ~100 m limitation of the survey equipment, subject to trench assay results and further data interpretation.



Caution Regarding Forward-Looking Information

Certain statements in this announcement relate to the future, including forward-looking statements relating to the Company and its business (including its projects). These forward-looking statements involve known and unknown risks, uncertainties, assumptions, and other important factors that could cause the actual results, performance or achievements of the Company to be materially different from future results, performance or achievements expressed or implied by such statements. Although the Company believes that its expectations, estimates and forecast outcomes are based on reasonable assumptions, it can give no assurance that they will be achieved.

Competent Persons Statement

The information in this report that relates to Exploration Targets and Results is based on information compiled by Mr Eugene Gotora, a member of The Australasian Institute of Mining and Metallurgy and The South African Institute of Mining and Metallurgy. Mr Gotora is the Company's Chief Geologist and has sufficient experience relevant to the style of mineralisation and type of deposit under consideration and to the activity he is undertaking to qualify as a Competent Person as defined in the 2012 Edition of the "Australasian Code for Reporting of Exploration Results, Mineral Resources and Ore Reserves". Mr Gotora consents to the inclusion of the information in the form and context in which it appears.

This announcement has been approved by the Board of Directors.

For further information, please contact:

Hugh Warner

Executive Chairman

Patriot Resources Limited

info@patriotresources.com

Jane Morgan

Investor & Media Relations

Patriot Resources Limited

jm@janemorganmanagement.com.au



About Patriot Resources Limited

Patriot Resources Limited (**ASX: PAT**) is an Australian exploration Company committed to discovering and developing high-value battery and critical mineral assets. The Company targets jurisdictions with tier-1 geological potential, supportive infrastructure, and clear pathways to development. Patriot combines disciplined exploration with strategic partnerships to advance projects capable of near-term development while maintaining a long-term growth pipeline. The Company's approach emphasises capital efficiency, scalability, and alignment with the global energy transition. Through a diversified portfolio and an experienced leadership team, Patriot is well-positioned to deliver shareholder value in a rapidly evolving resource sector.

Connect with us:

Website: www.patriotresources.com.au

LinkedIn: [Patriot Resources Limited](#)

Twitter: [@Patriot ASX](#)



APPENDIX 1: DGPS surveyed trench positions (WGS84, Zone 35S)

Trench ID	START			END			Length(m)
	<i>Eastings</i>	<i>Northings</i>	<i>Elev(m)</i>	<i>Eastings</i>	<i>Northings</i>	<i>Elev(m)</i>	
TBTR02EXT	489653.579	8363147.167	1316.924	489658.892	8363160.020	1308.209	27
TBTR06	489479.686	8363127.623	1303.155	489575.183	8363138.168	1316.505	96
TBTR07	489467.716	8363065.959	1301.558	489535.690	8363081.791	1310.336	70
TBTR08	489466.318	8363220.316	1300.836	489573.739	8363229.048	1305.197	108
Total							301

For personal use only

JORC Code, 2012 Edition – Table 1

Section 1 Sampling Techniques and Data

Criteria	JORC Code explanation	Commentary
Sampling techniques	<ul style="list-style-type: none"> Nature and quality of sampling (eg cut channels, random chips, or specific specialised industry standard measurement tools appropriate to the minerals under investigation, such as down hole gamma sondes, or handheld XRF instruments, etc). These examples should not be taken as limiting the broad meaning of sampling. Include reference to measures taken to ensure sample representivity and the appropriate calibration of any measurement tools or systems used. Aspects of the determination of mineralisation that are Material to the Public Report. In cases where 'industry standard' work has been done this would be relatively simple (eg 'reverse circulation drilling was used to obtain 1 m samples from which 3 kg was pulverised to produce a 30 g charge for fire assay'). In other cases more explanation may be required, such as where there is coarse gold that has inherent sampling problems. Unusual commodities or mineralisation types (eg submarine nodules) may warrant disclosure of detailed information. 	<ul style="list-style-type: none"> For trenches, systematic channel sampling was done using a geological hammer and chisel, chipping along the trench wall at 1-meter intervals. Approximately 1.5kg - 2.0kg of material was chipped per sample and sent to Alfred Knight lab in Kitwe, Zambia for Cu, Zn, Ag and Pb analysis. Au was analysed at SGS Kalulushi Lab, Zambia. Sampling techniques for field duplicates is discussed under Quality of assay data Ground magnetics and IP survey was conducted by a contractor TM Geophysics consultant, based in Zimbabwe. Survey was over a 60-hectare block, increasing total coverage at Target B1 to 90-hectares.
Drilling techniques	<ul style="list-style-type: none"> Drill type (eg core, reverse circulation, open-hole hammer, rotary air blast, auger, Bangka, sonic, etc) and details (eg core diameter, triple or standard tube, depth of diamond tails, face-sampling bit or other type, whether core is oriented and if so, by what method, etc). 	<ul style="list-style-type: none"> No drilling included in the announcement
Drill sample recovery	<ul style="list-style-type: none"> Method of recording and assessing core and chip sample recoveries and results assessed. Measures taken to maximise sample recovery and ensure representative nature of the samples. Whether a relationship exists between sample recovery and grade and whether sample bias may have occurred due to preferential loss/gain of fine/coarse material. 	<ul style="list-style-type: none"> No drilling included in the announcement
Logging	<ul style="list-style-type: none"> Whether core and chip samples have been geologically and geotechnically logged to a level of detail to support appropriate Mineral Resource estimation, mining studies and metallurgical studies. Whether logging is qualitative or quantitative in nature. Core (or costean, channel, etc) photography. The total length and percentage of the relevant intersections logged. 	<p>Channel Samples</p> <ul style="list-style-type: none"> Rock channel samples were collected systematically along bottom trench wall using a geological hammer and chisel to cut rock chips. All zones and samples were geologically logged to appropriate detail.

	<ul style="list-style-type: none"> • The Project is currently classified as early-stage exploration and no Mineral Resource estimation is applicable. • Geological data is recorded in the field using analog methods. Data recorded includes GPS location, Prospect location, exposure type, lithology, alteration and potential mineralisation. • Photographs were taken on areas of interest. • Alteration and mineralisation are preliminary determined by field observations.
<p><i>Sub-sampling techniques and sample preparation</i></p> <ul style="list-style-type: none"> • <i>If core, whether cut or sawn and whether quarter, half or all core taken.</i> • <i>If non-core, whether riffled, tube sampled, rotary split, etc and whether sampled wet or dry.</i> • <i>For all sample types, the nature, quality and appropriateness of the sample preparation technique.</i> • <i>Quality control procedures adopted for all sub-sampling stages to maximise representivity of samples.</i> • <i>Measures taken to ensure that the sampling is representative of the in-situ material collected, including for instance results for field duplicate/second-half sampling.</i> • <i>Whether sample sizes are appropriate to the grain size of the material being sampled.</i> 	<ul style="list-style-type: none"> • Trench samples were submitted in their entirety for analysis • High quality sampling procedures and appropriate sample preparation techniques were followed. • Several standards (commercial certified reference material) were inserted at intervals of 2 in 20 in rotation. Immediately following a blank, a standard was inserted. • Field duplicates were inserted at rate of 1 in 20. • Sample size (approximately 2kg in mass) considered appropriate to the grain size of material being sampled.
<p><i>Quality of assay data and laboratory tests</i></p> <ul style="list-style-type: none"> • <i>The nature, quality and appropriateness of the assaying and laboratory procedures used and whether the technique is considered partial or total.</i> • <i>For geophysical tools, spectrometers, handheld XRF instruments, etc, the parameters used in determining the analysis including instrument make and model, reading times, calibrations factors applied and their derivation, etc.</i> • <i>Nature of quality control procedures adopted (eg standards, blanks, duplicates, external laboratory checks) and whether acceptable levels of accuracy (ie lack of bias) and precision have been established.</i> 	<ul style="list-style-type: none"> • Geophysical data was processed and interpreted using proprietary grid industry-standard geophysical techniques. • Wenner array electrode configuration was used for IP survey • Previous announced trench assays and mapping data was cross-referenced to validate geophysical interpretation. • A G5 magnetometer and ARES machine was used for the surveys with readings taken every 25m spacing during magnetic survey and at 10m intervals during IP survey. • Advanced filters were applied to enhance features and correct for background noise. • In addition to the laboratory's own quality control ("QC") procedure(s), the company regularly inserts its own QC samples, with 15% of samples in reported results corresponding to an inserted combination of certified reference materials (standards), certified blank material, field duplicate.

	<ul style="list-style-type: none"> • Certified laboratories utilised (Alfred Knight and SGS, Zambia), uses appropriate technique for elements assayed. • All samples to be prepared, crushed, pulverised at Alfred Knight lab • Approx 150 grams pulp material per sample to be sent to SGS for Au analysis while Zn, Pb, Cu and Ag will be analysed at Alfred knight. • The entire sample < 2.0 Kg is dried in an electric oven set at 105°C + 5 °C for 4 or more hours (drying time dependent on moisture content), then crushed to 90% passing 2.00mm, split 0.25-1Kg and pulverized to 95% passing 150µm • For Cu, Pb, Ag and Zn Mixed acid (HNO3/HClO4/HCl/HF) digest to be used, 0.5g sample bulk to 250mls with ICP finish. • For Au extraction will be by fire assay with either AAS (following aqua-regia dissolution) or gravimetric finish based on concentration • For field duplicates, samples were cone and quartered to create the duplicate • QA/QC monitored on the entire batch, re-analysis to be proposed where errors exceeded set limits
<p>Verification of sampling and assaying</p>	<ul style="list-style-type: none"> • <i>The verification of significant intersections by either independent or alternative company personnel.</i> • <i>The use of twinned holes.</i> • <i>Documentation of primary data, data entry procedures, data verification, data storage (physical and electronic) protocols.</i> • <i>Discuss any adjustment to assay data.</i> <ul style="list-style-type: none"> • Geophysical data was processed by TM Geophysics consultant and verified against regional and local geological database. • All geological data including trench coordinates, lithological observations, strike, dip and mineralisation etc. was recorded on prepared logging templates in the field by the geologist, then inserted into Excel spreadsheet template (2021). • All data was ultimately stored into Microsoft Access database and shared with relevant members
<p>Location of data points</p>	<ul style="list-style-type: none"> • <i>Accuracy and quality of surveys used to locate drill holes (collar and down-hole surveys), trenches, mine workings and other locations used in Mineral Resource estimation.</i> • <i>Specification of the grid system used.</i> <ul style="list-style-type: none"> • Magnetic and IP survey was conducted over exploration licence 27715-HQ-LEL, in Mumbwa Zambia. Data is referenced to Arc1950 Zone 35S coordinate system. • For geological observations initially GPS locations were

	<ul style="list-style-type: none"> • <i>Quality and adequacy of topographic control.</i> <p>recorded in WGS84 UTM Zone 35 South using a handheld Garmin GPS66s model</p> <ul style="list-style-type: none"> • All geologically relevant features, i.e. pit workings, trenches, sampling points were surveyed by a handheld GPS first before a DGPS survey. • A CHCX13 GNSS DGPS was used in WGS84, Zone 35S with expected location accuracy of +/- 0.1m
<p><i>Data spacing and distribution</i></p> <ul style="list-style-type: none"> • <i>Data spacing for reporting of Exploration Results.</i> • <i>Whether the data spacing and distribution is sufficient to establish the degree of geological and grade continuity appropriate for the Mineral Resource and Ore Reserve estimation procedure(s) and classifications applied.</i> • <i>Whether sample compositing has been applied.</i> 	<ul style="list-style-type: none"> • Data coverage was continuous over the surveyed area, providing high-resolution magnetic and IP data to refine structural models. • No geological and grade correlation or continuity can be established at the moment. • The nature of this exploration phase is target generated and early stage. • This was a systematic rock chip sampling program based on set trench positions within a target. • Data spacing is anticipated to support mineral resource estimation for the indicated and inferred categories, with data spacing and distribution for higher confidence resource estimation categories to be defined with further drilling, modelling and geostatistical analysis work.
<p><i>Orientation of data in relation to geological structure</i></p> <ul style="list-style-type: none"> • <i>Whether the orientation of sampling achieves unbiased sampling of possible structures and the extent to which this is known, considering the deposit type.</i> • <i>If the relationship between the drilling orientation and the orientation of key mineralised structures is considered to have introduced a sampling bias, this should be assessed and reported if material.</i> 	<ul style="list-style-type: none"> • Survey orientation was designed to detect structures controlling mineralisation on an E-W orientation. Main structures believed to be trending N-S and NW-SE. • Multiple filtering techniques were applied to minimize bias. • The true thickness of intercepts will be accounted for following drilling, structural analysis and 3D modelling. • Channel sampling was done systematically along trench wall at 1-meter intervals thereby reducing bias • The orientation of trenches and channel sampling is perpendicular to oblique mapped structural orientations and mineralised zones inside the trench. • The true thickness of intercepts will be accounted for following drilling, structural analysis and 3D modelling

<i>Sample security</i>	<ul style="list-style-type: none"> The measures taken to ensure sample security. 	<ul style="list-style-type: none"> Geophysical data was handled and processed by TM Geophysics consultant under secure conditions. Samples were collected by Patriot geologists and field assistants and held in a secure yard prior to shipment for laboratory analysis. Samples are enclosed in polyweave sacks for delivery to the lab and weighed individually prior to shipment and upon arrival at the lab.
<i>Audits or reviews</i>	<ul style="list-style-type: none"> The results of any audits or reviews of sampling techniques and data. 	<ul style="list-style-type: none"> The geophysical review was conducted by a qualified geophysical consultant No audits of the sampling procedures or protocols has taken place as yet. A review of all samples including mineralised intercepts was undertaken by the Chief Geologist.

Section 2 Reporting of Exploration Results

Criteria	JORC Code explanation	Commentary
<i>Mineral tenement and land tenure status</i>	<ul style="list-style-type: none"> Type, reference name/number, location and ownership including agreements or material issues with third parties such as joint ventures, partnerships, overriding royalties, native title interests, historical sites, wilderness or national park and environmental settings. The security of the tenure held at the time of reporting along with any known impediments to obtaining a licence to operate in the area. 	<ul style="list-style-type: none"> The large-scale Licence 27715-HQ-LEL covering Target B1 in Mumbwa is held by Newlight Nominees Zambia Limited (Zambia), with Patriot Resources Limited exercising an option to own 80% interest in the large-scale Licence. The Licence is active and valid till 30/05/2027 and covers 25,511.29 Ha.
<i>Exploration done by other parties</i>	<ul style="list-style-type: none"> Acknowledgment and appraisal of exploration by other parties. 	<ul style="list-style-type: none"> A regional geological map, 1;100,000 covering the Licence from the Geological Survey department, Zambia, 1998. During the 1990's Billiton conducted soil geochemical surveys over the Licence A regional airborne magnetics survey was done over the area in 2004 by BHP Billiton and Blackthorn Resources. Sinomine Kitumba conducted geochemical soil sampling and drilling recently within the area
<i>Geology</i>	<ul style="list-style-type: none"> Deposit type, geological setting and style of mineralisation. 	<ul style="list-style-type: none"> Sequences of carbonates and calc-arenites interlayered with shales and siltstones of the Katanga Supergroup can be mapped over the Licence.

Drill hole Information	<ul style="list-style-type: none"> • A summary of all information material to the understanding of the exploration results including a tabulation of the following information for all Material drill holes: <ul style="list-style-type: none"> ○ easting and northing of the drill hole collar ○ elevation or RL (Reduced Level – elevation above sea level in metres) of the drill hole collar ○ dip and azimuth of the hole ○ down hole length and interception depth ○ hole length. • If the exclusion of this information is justified on the basis that the information is not Material and this exclusion does not detract from the understanding of the report, the Competent Person should clearly explain why this is the case. 	<ul style="list-style-type: none"> • The geological setting is structurally controlled with major NW-SE, N-S and NE-SW trending faults • No drilling included in the announcement
Data aggregation methods	<ul style="list-style-type: none"> • In reporting Exploration Results, weighting averaging techniques, maximum and/or minimum grade truncations (eg cutting of high grades) and cut-off grades are usually Material and should be stated. • Where aggregate intercepts incorporate short lengths of high grade results and longer lengths of low grade results, the procedure used for such aggregation should be stated and some typical examples of such aggregations should be shown in detail. • The assumptions used for any reporting of metal equivalent values should be clearly stated. 	<ul style="list-style-type: none"> • Copper equivalent will be calculated once phase 2 results are out • Cut-off grade to be calculated once results are out with no upper limit controls. • A standard recovery of 85% was applied to all metals during phase 1. • No metallurgical test-works and density tests have been conducted.
Relationship between mineralisation widths and intercept lengths	<ul style="list-style-type: none"> • These relationships are particularly important in the reporting of Exploration Results. • If the geometry of the mineralisation with respect to the drill hole angle is known, its nature should be reported. • If it is not known and only the down hole lengths are reported, there should be a clear statement to this effect (eg 'down hole length, true width not known'). 	<ul style="list-style-type: none"> • Reported intersections are measured sample lengths. Reported trench and channel intersections are of unknown true width, drilling and modelling of results is required to confirm the projected dip(s) of mineralised zones. • Due to the very early nature and style of the exploration undertaken it cannot be known if intercepts represent true widths of mineralised structures, lodes or zones.
Diagrams	<ul style="list-style-type: none"> • Appropriate maps and sections (with scales) and tabulations of intercepts should be included for any significant discovery being reported These should include, but not be limited to a plan view of drill hole collar locations and appropriate sectional views. 	<ul style="list-style-type: none"> • See body of announcement and appendix for plans showing project location, maps and tables.
Balanced reporting	<ul style="list-style-type: none"> • Where comprehensive reporting of all Exploration Results is not practicable, representative reporting of both low and high grades and/or widths should be practiced to avoid misleading reporting of 	<ul style="list-style-type: none"> • This report discusses the findings of recent trenching and geophysical survey.

<i>Exploration Results.</i>		
<i>Other substantive exploration data</i>	<ul style="list-style-type: none"> <i>Other exploration data, if meaningful and material, should be reported including (but not limited to): geological observations; geophysical survey results; geochemical survey results; bulk samples – size and method of treatment; metallurgical test results; bulk density, groundwater, geotechnical and rock characteristics; potential deleterious or contaminating substances.</i> 	<ul style="list-style-type: none"> Relevant data has been reported, refer to references in the text. No bulk samples, metallurgical test work, density, water, geotechnical, or other including deleterious elements have been assessed in the current program.
<i>Further work</i>	<ul style="list-style-type: none"> <i>The nature and scale of planned further work (eg tests for lateral extensions or depth extensions or large-scale step-out drilling).</i> <i>Diagrams clearly highlighting the areas of possible extensions, including the main geological interpretations and future drilling areas, provided this information is not commercially sensitive.</i> 	<ul style="list-style-type: none"> Patriot Resources Limited is planning further exploration work programs, including trenching, geophysical surveys and possibly future drilling.