

For personal use only



GOLD DISCOVERY OPPORTUNITIES IN THE STAVELY VOLCANIC BELT

High-impact drilling underway targeting major
new gold discoveries in Western Victoria

AGM Presentation 19 November 2025



Disclaimer



This presentation contains only an overview of **Stavely Minerals Limited** ("Stavely" or the "Company") and its activities and operations. The contents of this presentation, including matters relating to the geology and exploration potential of the Company's projects, may rely on various assumptions and subjective interpretations which it is not possible to detail in this presentation and which have not been subject to any independent verification.

This presentation contains a number of forward-looking statements. Known and unknown risks and uncertainties, and factors outside of the Company's control, may cause the actual results, performance and achievements of the Company to differ materially from those expressed or implied in this presentation.

To the maximum extent permitted by law, Stavely does not warrant the accuracy, currency or completeness of the information in this presentation, nor the future performance of the Company, and will not be responsible for any loss or damage arising from the use of the information.

The information contained in this presentation is not a substitute for detailed investigation or analysis of any particular issue. Current and potential investors should seek independent advice before making any investment decision in regard to the Company or its activities.



A modern Australian exploration Company, targeting copper, gold & nickel



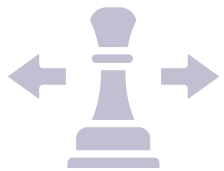
What does Stavely Minerals offer that is different?



BIG
targets



SUBSTANTIAL
leverage



LATERAL
thinking



FIRST MOVER
advantage in
frontier provinces



For personal use only

Stavely Project

The Cayley Lode Mineral Resources Estimate

For personal use only



Discovery – outstanding shallow high-grade copper-gold-silver discovery (September 2019), the Cayley Lode

Cayley Lode MRE¹

- 9.3Mt at 1.23% Cu 0.23g/t Au and 7.1g/t Ag

Total Resources

- 28.3Mt @ 0.75% Cu, 0.11g/t and 3.5g/t Ag

Containing

- 210,000t Cu, 100,000oz Au, 3.2Moz Ag and 2.4kt Zn
- Mineralisation extends from surface to 300m depth, remains open

¹ Reported in compliance with the JORC Code 2012, see ASX announcement 14 June 2022, see Appendix 1 for classifications
Cayley Lode Bomite Mineralisation – Photo from ASX announcement 11 September 2019

Stavelly Project – Control major Cu-Au fertile Volcanic Belts

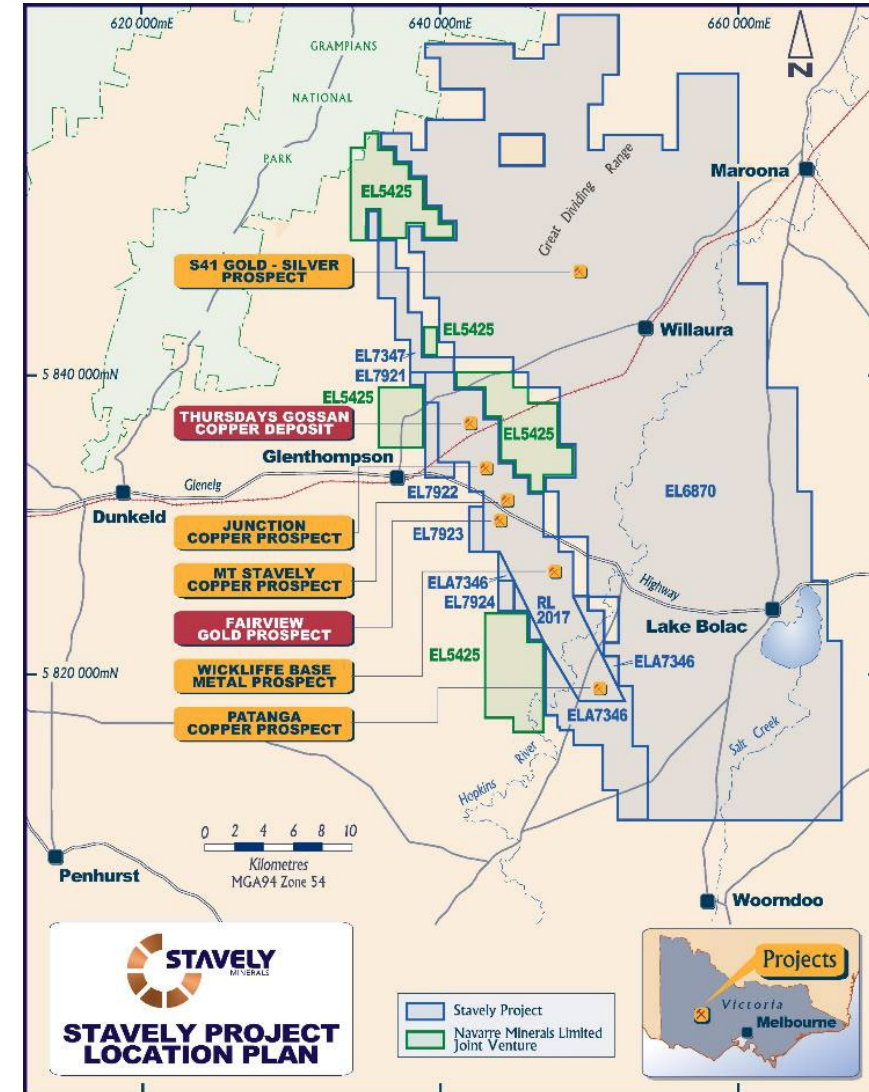
Discovery – outstanding shallow high-grade copper-gold-silver discovery (September 2019), the Cayley Lode¹

Stavelly Minerals strategy to realise value in the Cayley Lode discovery is two-fold:

1. Discover more copper resources – Junction (access is a priority).
2. Pursue a gold discovery strategy – adding a copper floatation circuit to a gold plant is a modest additional cost

Multiple regional discovery opportunities:

- Fairview North gold prospect – great recent drilling results²
- Fairview South gold prospect – great recent drilling results³
- S41 breccia-hosted gold – 2km x 750m breccia pipe
 - Only 1 x diamond drill hole in large system, scale potential⁴
 - Drilling in-progress



¹ See ASX announcement 14 June 2022, Appendix 1 ² See ASX announcement 17 July 2025

³ See ASX announcement 14 July 2025 ⁴ See ASX announcement 23 May 2023 and 10 June 2025

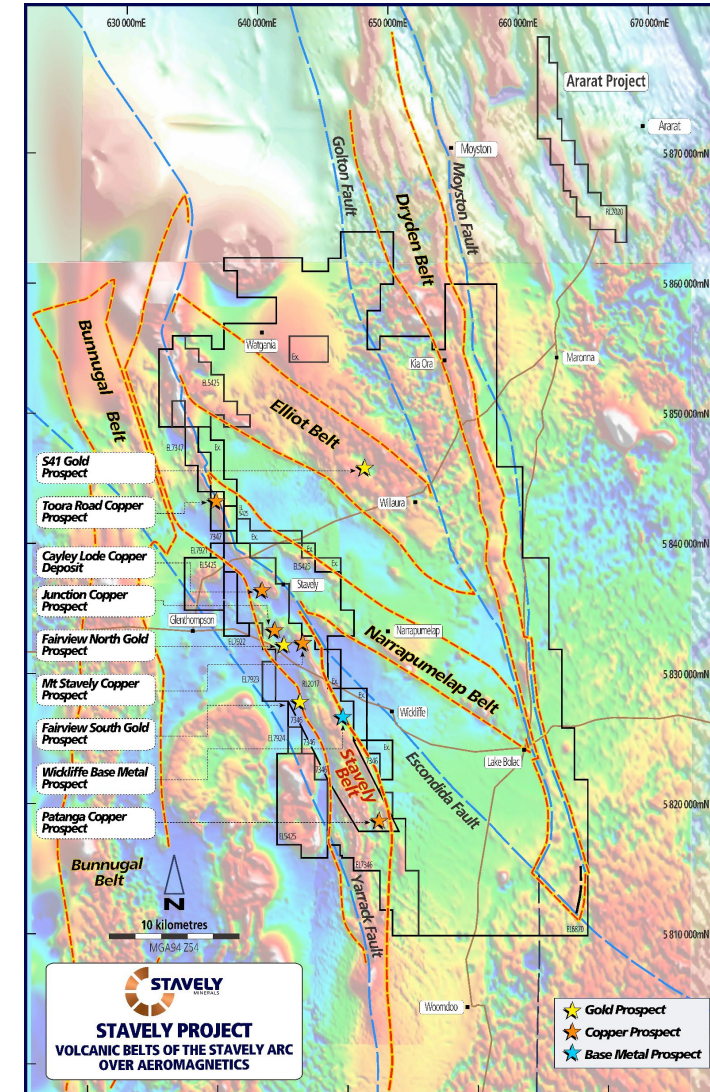
Stavelly Project – Control major Cu-Au fertile Volcanic Belts

Discovery – outstanding shallow high-grade copper-gold-silver discovery (September 2019), the Cayley Lode¹

Multiple regional discovery opportunities:

- Fairview North gold prospect – great recent drilling results²
- Fairview South gold prospect – great recent drilling results³, Phase 3: 9 x RC drill holes completed, assays pending
- S41 breccia-hosted gold – 2km x 750m breccia pipe
 - Only 1 x diamond drill hole in large system, scale potential⁴
 - Reconnaissance RC drilling on-going, 14 holes planned, subject to change as program progresses

Stavelly Minerals controls tenure over some 130km of various components of the Stavelly Arc, an Andean-style continental margin volcanic arc that is well preserved and prospective for several world-class styles of gold mineralisation in addition to the demonstrated copper fertility.



¹ See ASX announcement 14 June 2022, Appendix 1 ² See ASX announcement 17 July 2025

³ See ASX announcement 14 July 2025 ⁴ See ASX announcement 23 May 2023 and 10 June 2025

Gold Discovery Opportunities

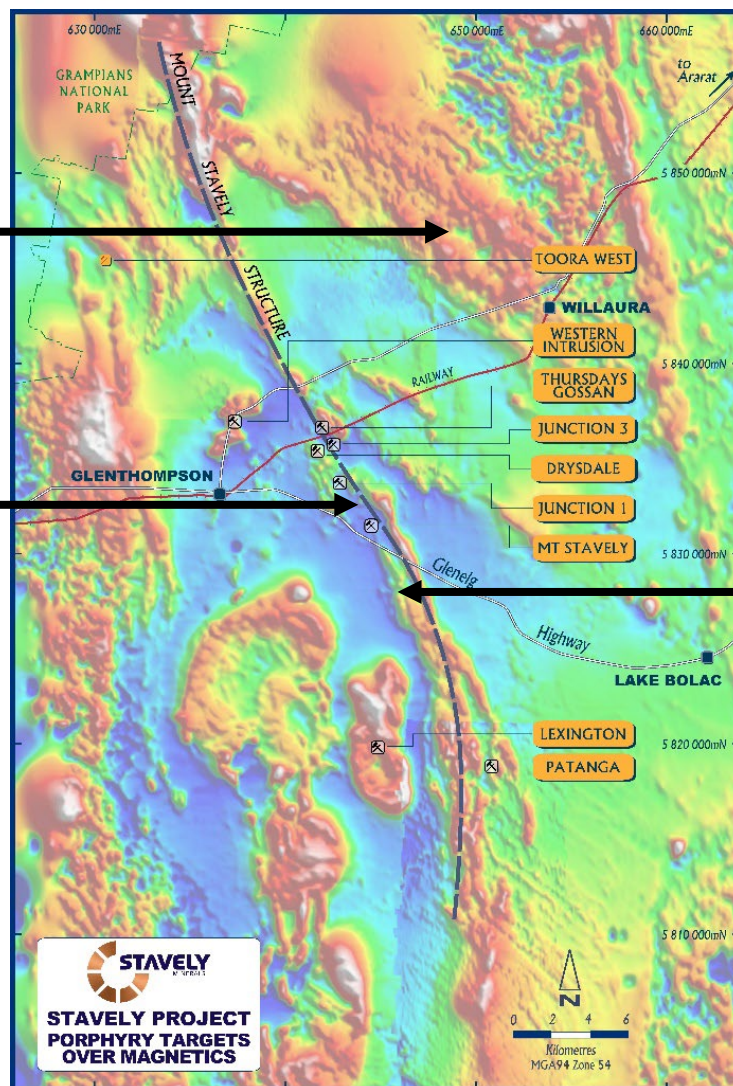
For personal use only

Gold discovery opportunities

**S41 breccia-hosted
gold prospect**

**Fairview North
gold prospect**

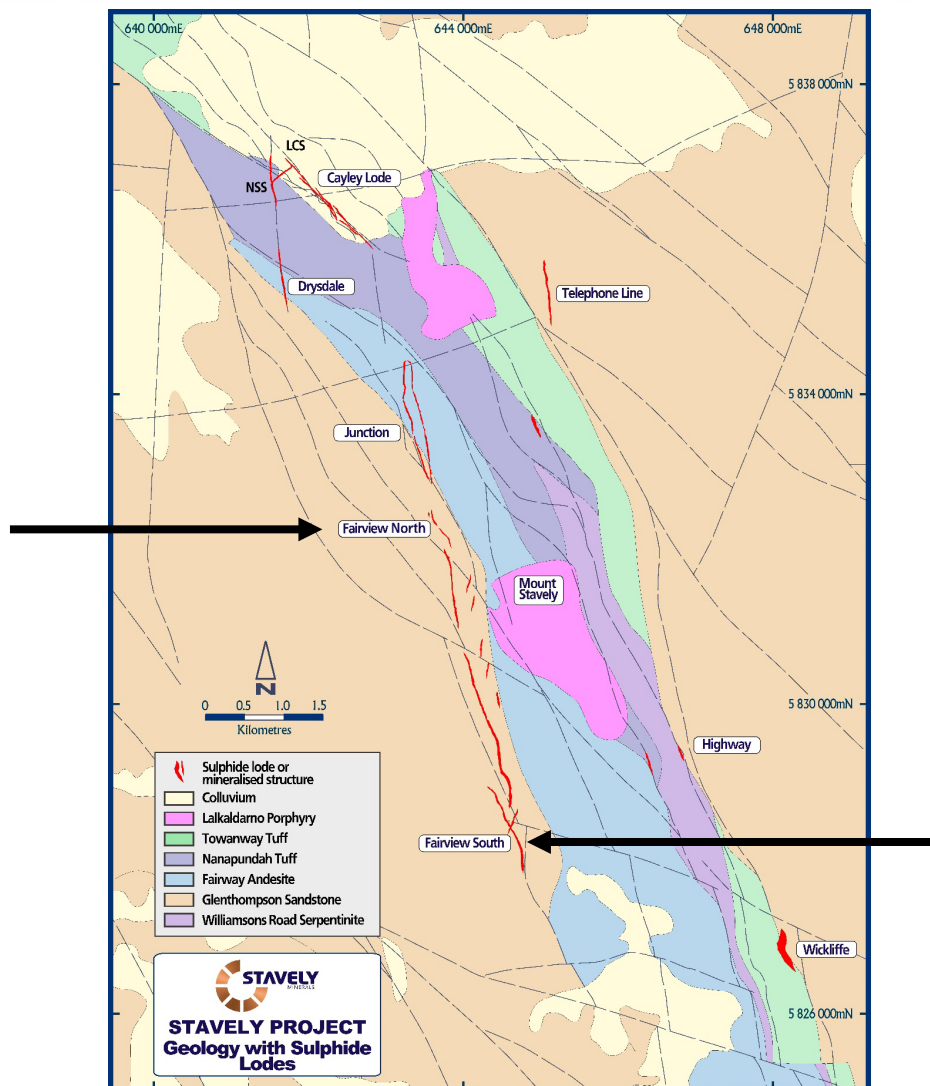
**Fairview South
gold prospect**



Gold discovery opportunities – Fairview North and South

For personal use only

Fairview North gold prospect
(favourable NW structural control)



Fairview South gold prospect
(gold associated with porphyry dykes)

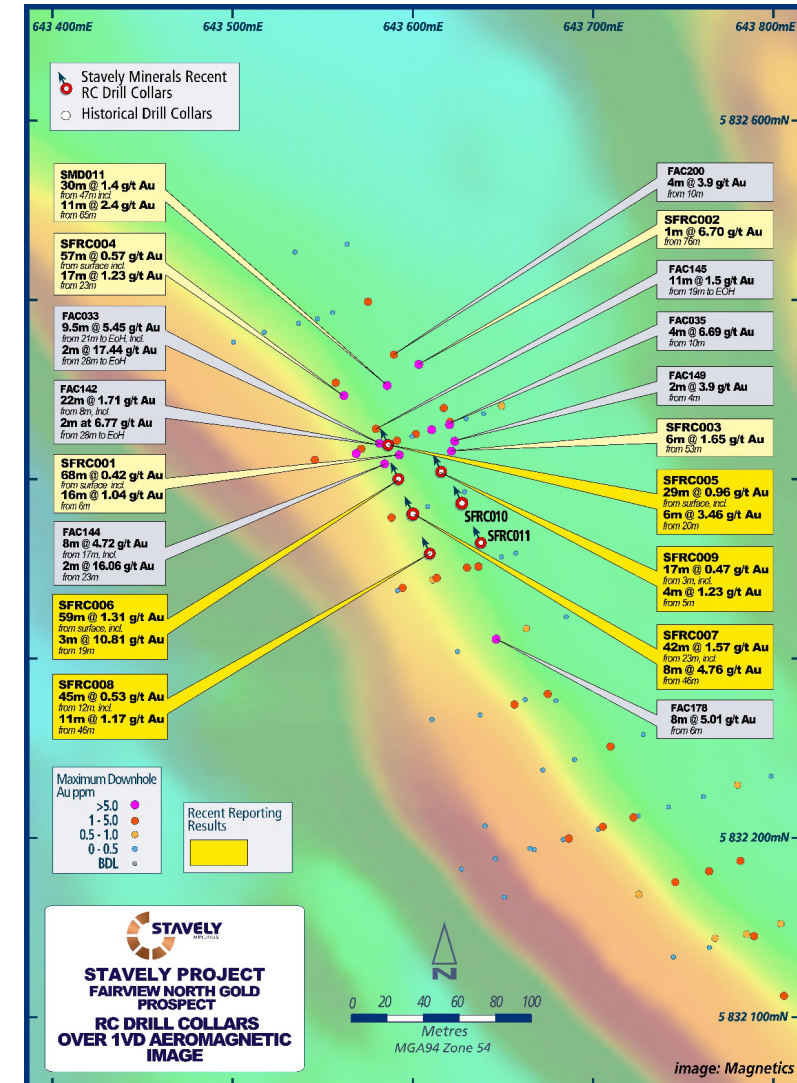
Gold discovery opportunities – Fairview North¹

Previous explorer drill results:

- FAC142 – **22m at 1.71g/t Au** from 8m to EoH
 - Incl. **3m at 5.1g/t Au** to EoH
- FAC178 – **6m at 6.1g/t Au** from 6m
- FAC145 - **11m at 1.5g/t Au** from 19m to EoH
- FAC144 – **2m at 16.1g/t Au** from 18m
- FAC035 – **6m at 4.6g/t Au** from 8m

Stavelly Minerals previous intercepts

- SMD011 – **30m at 1.4g/t Au** from 47m
 - Incl. **11m at 2.4g/t Au** from 65m
- SFRC001 – **68m at 0.42g/t Au** from surface
 - Incl. **16m @ 1.04g/t Au** from 6m
- SFRC002 – **1m at 6.70g/t Au** from 76m
- SFRC003 – **6m at 1.65g/t Au** from 53m
- SFRC004 – **57m at 0.57g/t Au** from surface
 - Incl. **17m at 1.23g/t Au** from 23m



¹ See ASX: SVY announcement 20 July 2017 and 22 May 2025

Gold discovery opportunities – Fairview North

Recent Phase 1 RC drill results:

➤ **27m at 2.33g/t gold** from 13m down-hole, including:

- **3m at 10.81g/t** from 19m down-hole, and,
- **4m at 5.05g/t** gold from 30m down-hole

All within a broader zone of **59m at 1.31g/t gold** from surface, in drill hole SFRC006

➤ **8m at 4.76g/t gold** from 46m drill depth

Within a broader zone of **42m at 1.57g/t gold** from 23m drill depth in drill hole SFRC007

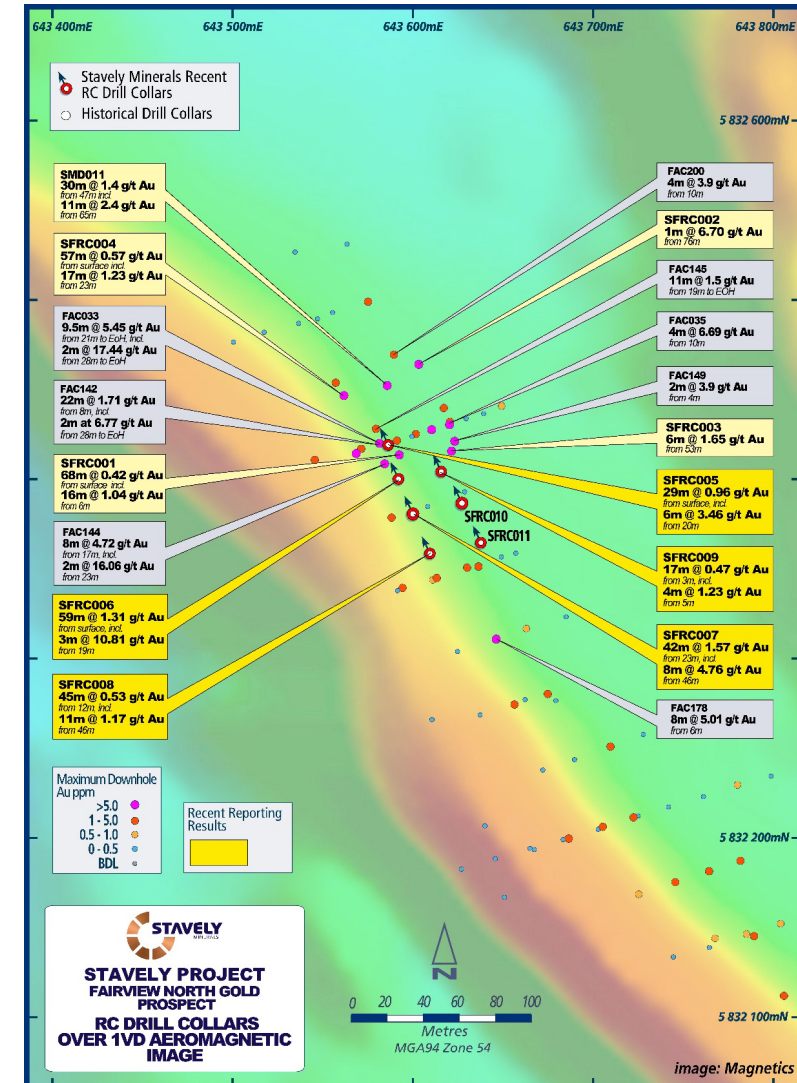
➤ **6m at 3.46g/t gold** from 20m drill depth

Within a broader zone of **29m at 0.96g/t gold** from surface in drill hole SFRC005

➤ **11m at 1.17g/t gold** from 46m drill depth

Within a broader zone of **45m at 0.53g/t gold** from 12m in drill hole SFRC008, and

¹ See ASX: SVY announcement 17 July 2025



Gold discovery opportunities – Fairview North

Recent Phase 2 RC drill results:

➤ **27m at 2.33g/t gold** from 13m down-hole, including:

- **3m at 10.81g/t** from 19m down-hole, and,
- **4m at 5.05g/t** gold from 30m down-hole

All within a broader zone of **59m at 1.31g/t gold** from surface, in drill hole SFRC006

➤ **8m at 4.76g/t gold** from 46m drill depth

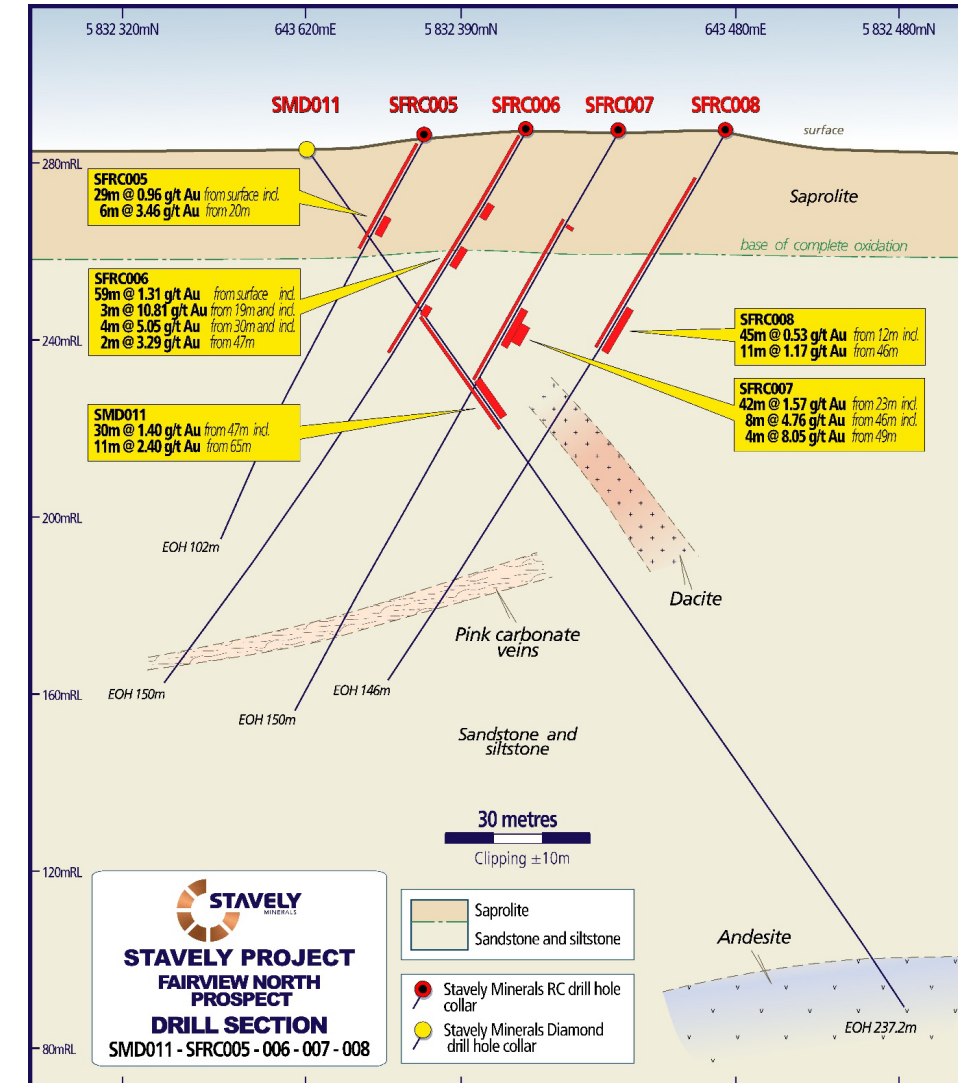
Within a broader zone of **42m at 1.57g/t gold** from 23m drill depth in drill hole SFRC007

➤ **6m at 3.46g/t gold** from 20m drill depth

Within a broader zone of **29m at 0.96g/t gold** from surface in drill hole SFRC005

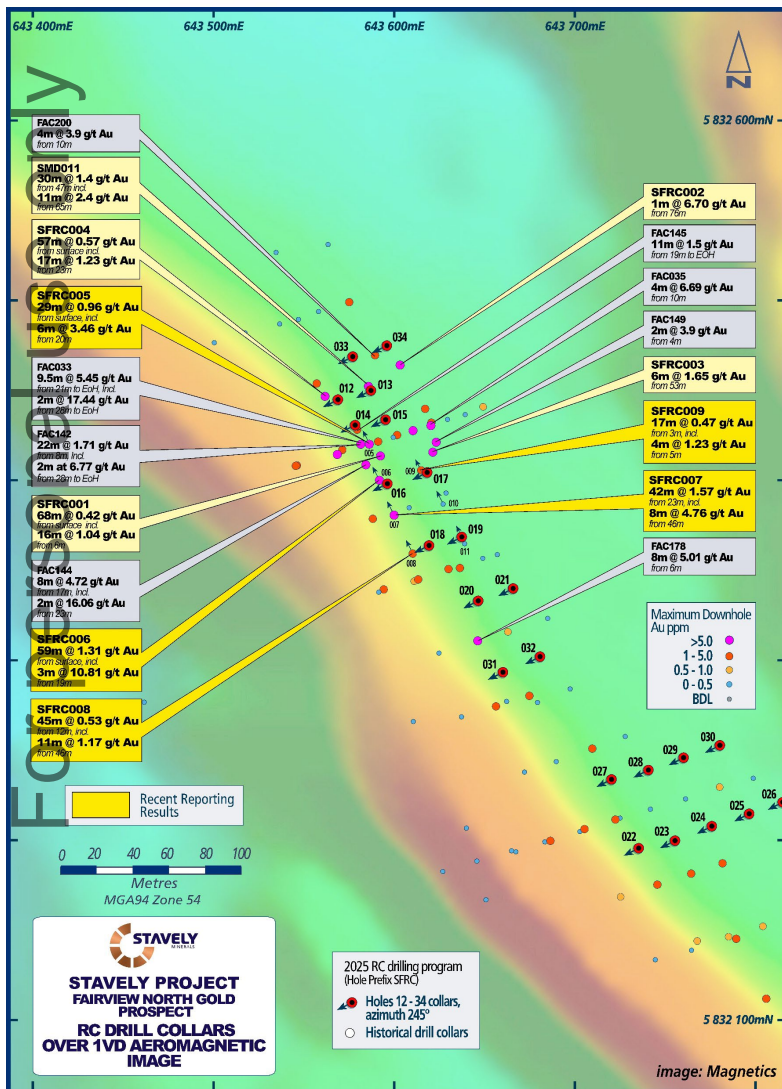
➤ **11m at 1.17g/t gold** from 46m drill depth

Within a broader zone of **45m at 0.53g/t gold** from 12m in drill hole SFRC008



¹ See ASX: SVY announcement 17 July 2025

Gold discovery opportunities – Fairview North



Attractive gold target:

- Favourable NW 'kink' in the Fairview trend
- Same fertile orientation as the Cayley Lode
- Magnetics indicate it is located on the contact between sandstone and diorite intrusion – competency contrast

Only flexure 'A' tested in Phase 1 RC drilling¹.

Phase 3, RC drilling holes completed:

- Flexure 'A' now ready for extensional drilling - DONE
- RC drill test flexures 'B' and 'C' - DONE
- To be done: Aircore drill NW and SE extensions to identify additional flexures

¹ See ASX: SVY announcement 22 May 2025

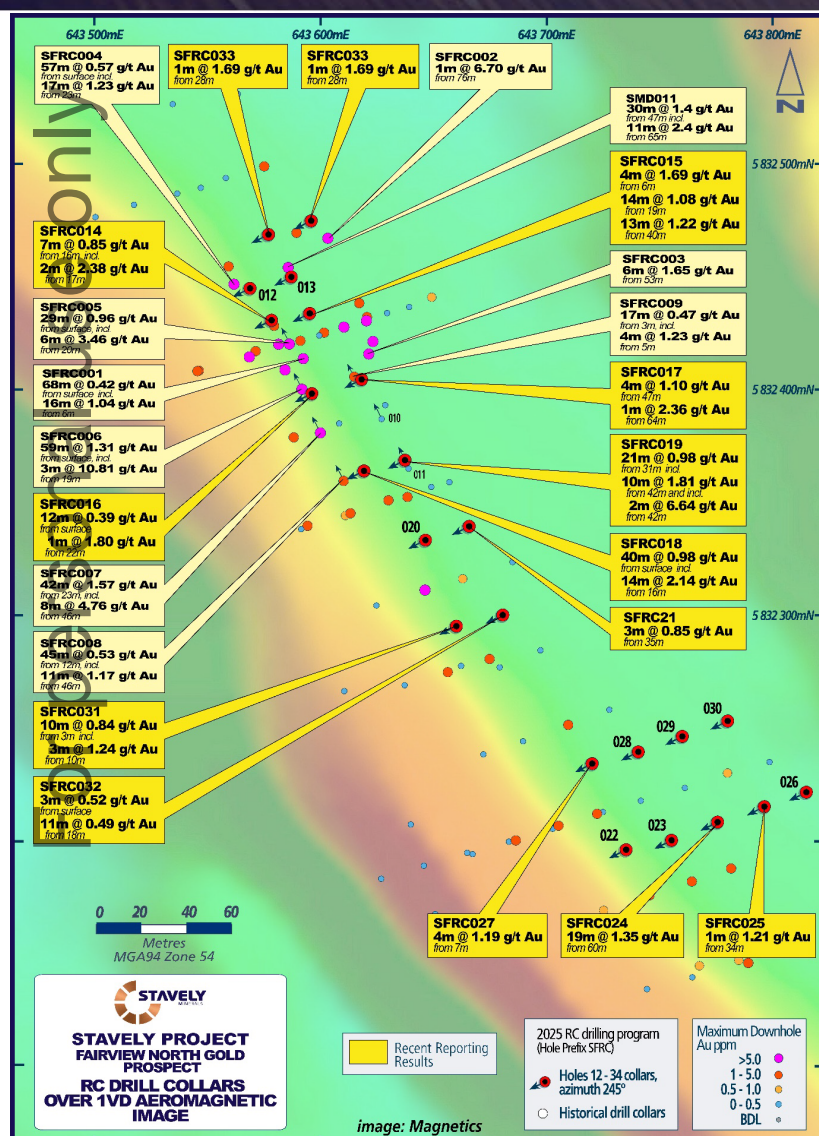
² See ASX: SVY announcement 12 September 2025

Gold discovery opportunities – Fairview North, Phase 3 RC

Phase 2 Reverse Circulation (RC) drilling has successfully increased the known strike extent of shallow gold mineralisation at Fairview North to over 300m, with significant intercepts including¹:

- 19m at 1.35g/t gold from 60m drill depth, including:
 - 1m at 12.75g/t gold from 60m
- 7m at 1.85g/t gold from 7m drill depth
- 14m at 1.08g/t gold from 19m drill depth, including:
 - 5m at 2.0g/t gold from 19m; and
- 13m at 1.22g/t gold from 40m drill depth , including:
 - 4m at 2.29g/t gold from 42m
- 40m at 0.98g/t gold from surface, including:
 - 14m @ 2.14g/t gold from 16m down-hole, including:
 - 4m at 6.14g/t gold from 16m, including:
 - 1m at 18.60g/t gold from 16m
- 21m at 0.98g/t gold from 31m drill depth, including:
 - 10m at 1.81g/t gold from 42m, including:
 - 2m at 6.64g/t gold from 42m

¹ See ASX: SVY announcement 14 October 2025



Fairview North Bottle Roll and Column Leach Test Results

Bottle Roll Cyanide Leach Test

| Sample ID | Test No. | % Au Extraction @ Hours | | | | | | | | Calc'd Head Au (g/t) | Consumption (kg/t) | |
|-----------|----------|-------------------------|------|------|------|------|------|------|------|----------------------|--------------------|------|
| | | 2 | 4 | 8 | 24 | 48 | 72 | 96 | 120 | | NaCN | Lime |
| SFGDM01 | LT1 | 24.7 | 55.2 | 73.3 | 96.3 | 97.2 | 98.2 | 98.3 | 98.4 | 1.83 | 0.76 | 0.17 |
| SFGDM02 | LT2 | 7.0 | 16.8 | 26.7 | 54.7 | 65.0 | 68.4 | 73.2 | 72.6 | 0.55 | 1.74 | 1.77 |
| SFGDM03 | LT3 | 12.7 | 33.2 | 47.5 | 75.1 | 82.2 | 88.1 | 92.4 | 92.4 | 1.77 | 1.21 | 0.50 |

Column Leach Test

| Sample ID | Test No. | % Au Extraction @ Days | | | | | | | | Calc'd Head Au (g/t) | Consumption (kg/t) | |
|-----------|----------|------------------------|------|------|------|------|------|------|------|----------------------|--------------------|--------|
| | | 1 | 2 | 5 | 10 | 15 | 20 | 30 | 37 | | NaCN | Cement |
| SFGDM01 | LT1 | 24.3 | 57.0 | 84.1 | 91.3 | 93.3 | 94.3 | 95.5 | - | 95.8 | 1.90 | 10.0 |
| SFGDM02 | LT2 | 7.4 | 26.6 | 52.9 | 66.2 | 72.1 | 76.0 | 80.8 | - | 81.9 | 0.42 | 20.0 |
| SFGDM03 | LT3 | 11.5 | 34.3 | 60.5 | 72.6 | 77.6 | 80.8 | 84.7 | 86.6 | 87.4 | 0.67 | 10.0 |

Comparison of bottle roll leach only vs gravity plus leach

| Sample | Test No | Size | Description | Au Gravity Recovery, % | Au Leach Recovery, % | Au Overall Recovery, % |
|---------|---------|-------------|----------------|------------------------|----------------------|------------------------|
| SFGDM01 | LT1 | As Received | Leach Only | - | 98.4 | 98.4 |
| SFGDM02 | LT2 | As Received | Leach Only | - | 72.6 | 72.6 |
| SFGDM02 | LT4 | -1.7 mm | Gravity+ Leach | 9.69 | 75.3 | 85.0 |
| SFGDM03 | LT3 | As Received | Leach Only | - | 92.4 | 92.4 |
| SFGDM03 | LT5 | -1.7 mm | Gravity+ Leach | 21.5 | 73.8 | 95.3 |

Very good leach results¹ – amenable to low-cost heap leach gold extraction:

- Up to +96% gold recovery after 24 hours in bottle roll testing
- Up to +90% gold recovery after 10 days in column leach tests
- Gravity plus leach test recoveries up to 95.3%
- Testwork concludes **+80% gold recoveries could be expected** in low-cost heap leach extraction

¹ See ASX:SVY announcement dated 17 July 2025 and ALS Metallurgy Test Report under the Technical Data tab on www.stavely.com.au

Fairview South

Gold Discovery Opportunities – Fairview South

Previous explorer drill results¹:

FRH040 – **42m at 1.14g/t Au** from surface, including

- **9m at 3.00g/t Au** from 24m

FAC131 – **29m at 1.42g/t Au** from 6m

FRH003 - **5m at 1.84g/t Au** from 14m, and

- **5m at 1.23g/t Au** from 28m

FAC168 – **6m at 1.62g/t Au** from 22m

FAC126 – **4m at 1.88g/t Au** from 14m

FDH006 – **2.6m at 1.94g/t Au** from 34.3m

FRH001 – **29m at 0.96g/t Au** from surface, including

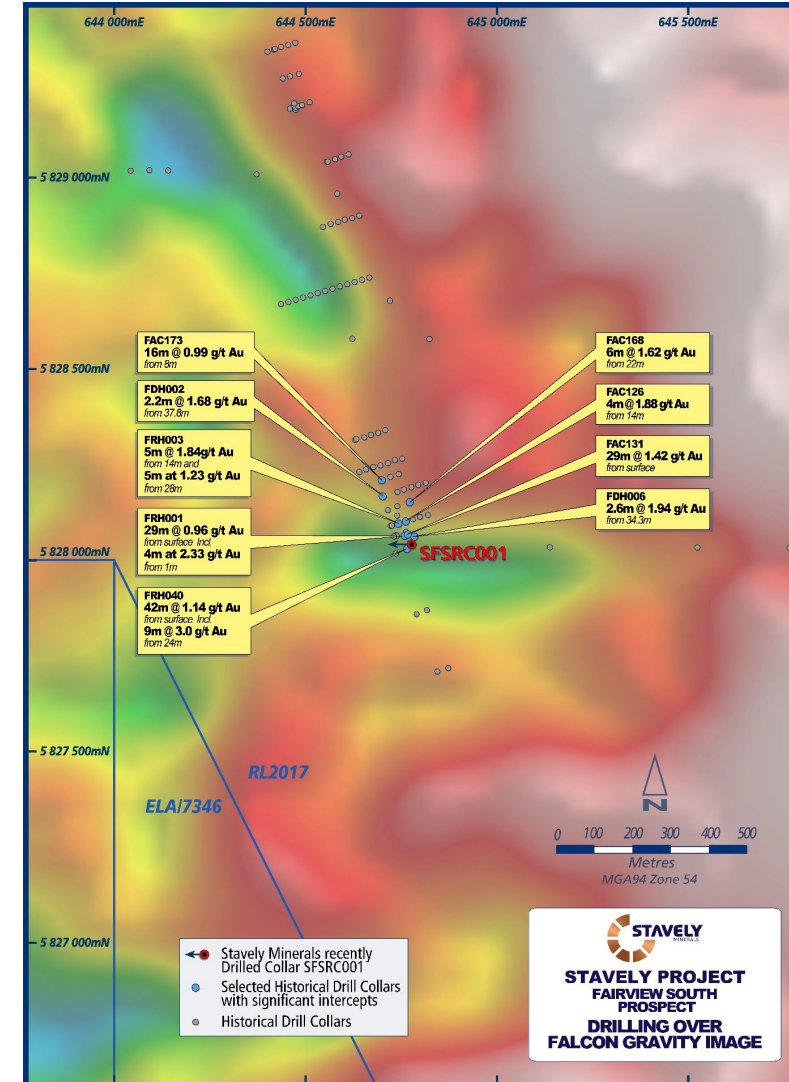
- **4m at 2.33g/t Au** from 1m

FAC173 – **16m at 0.99g/t Au** from 8m

Drilled by Beaconsfield Gold ~1 month before the Beaconsfield Mine disaster, no further work after.

Located on a major WNW structure and proximal to a gravity low – interpreted to be a rhyolite intrusion.

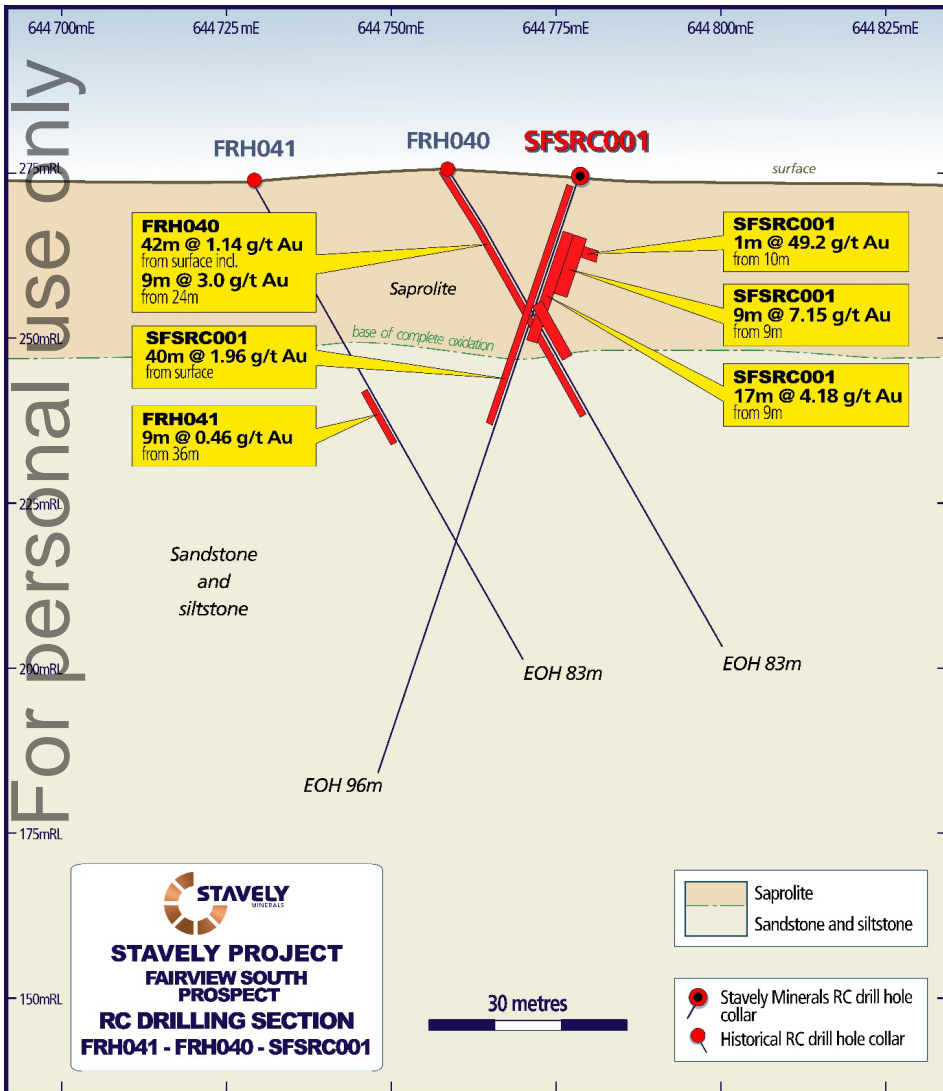
¹ See Stavely Minerals Prospectus April 2014



Fairview South recent Phase 1 RC drill results

Fairview South Gold Prospect

- 40m at 1.96g/t gold from surface including:
- 17m at 4.18g/t gold from 9m down-hole, including¹:
- 9m @ 7.15g/t gold from 9m down-hole, including:
 - 1m at 49.2g/t gold from 10m down-hole.

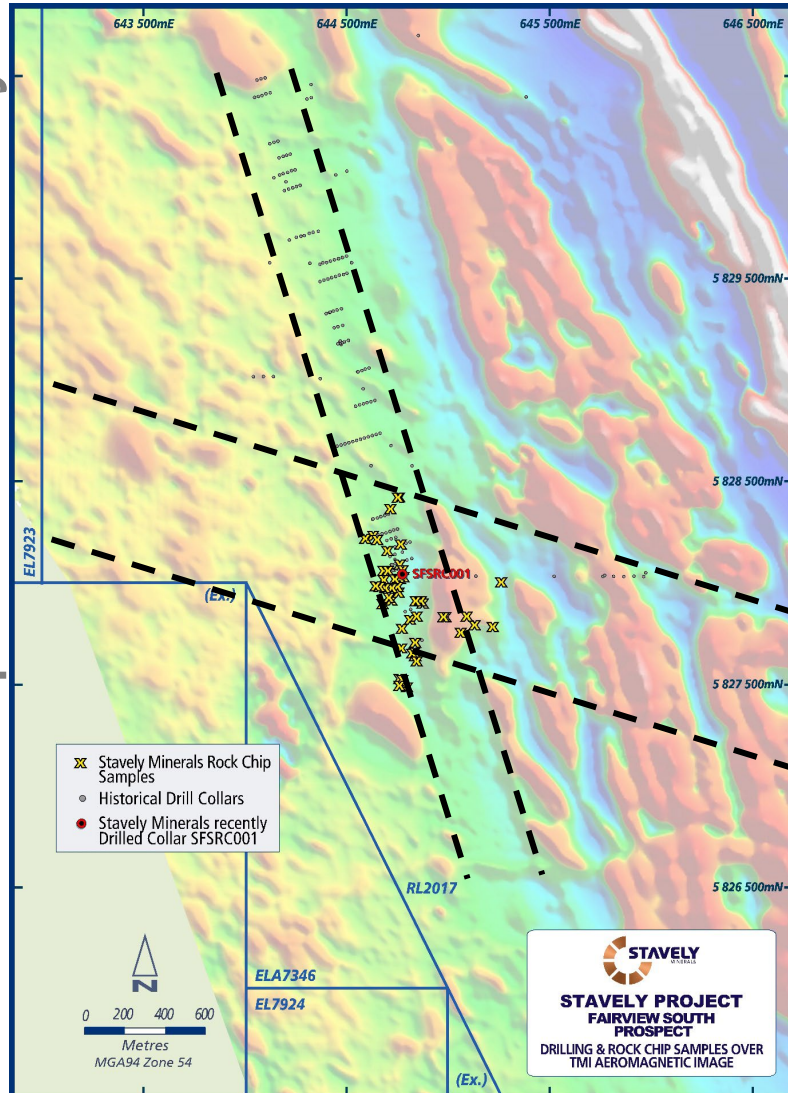


¹ See ASX:SVY announcement 14 July 2025

Fairview South Magnetics 1VD, structure and Intrusion

Fairview South Gold Prospect

- At the intersection of ~NS and WNW structures
- Associated with logged intermediate and felsic intrusive dykes
- A single RC drill hole (SFSRC001) recently drilled to confirm gold mineralisation location – **40m @ 1.96g/t gold**
- Abundant gossanous float material sampled in the paddock – +400m extension to the south



¹ See ASX:SVY announcement 14 July 2025

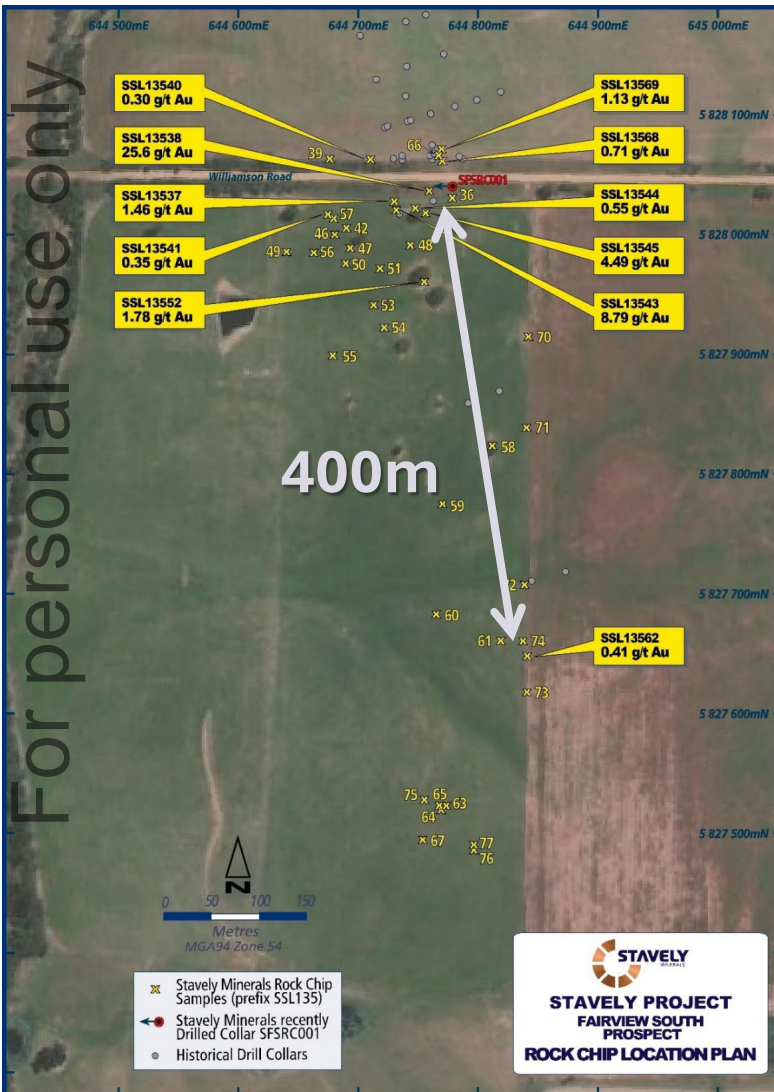
Fairview South recent rock chip results

Fairview South Gold Prospect Reconnaissance Rock Chips

- **25.60g/t gold** - gossan w/ boxworks hosted in siltstone
- **8.79g/t gold** - brecciated quartz vein and gossan w/ boxworks in altered felsic volcanic – ?rhyolite
- **4.49g/t gold** - brecciated quartz vein and gossan w/ boxworks in altered siltstone
- **1.78g/t gold** - a collection of quartz vein and gossan fragments
- **1.46g/t gold** - gossan w/ boxworks in altered siltstone
- **1.13g/t gold** - quartz veined ferruginous felsic volcanic ?rhyolite

A further eight float rock-chip samples returned anomalous assays +0.1g/t gold

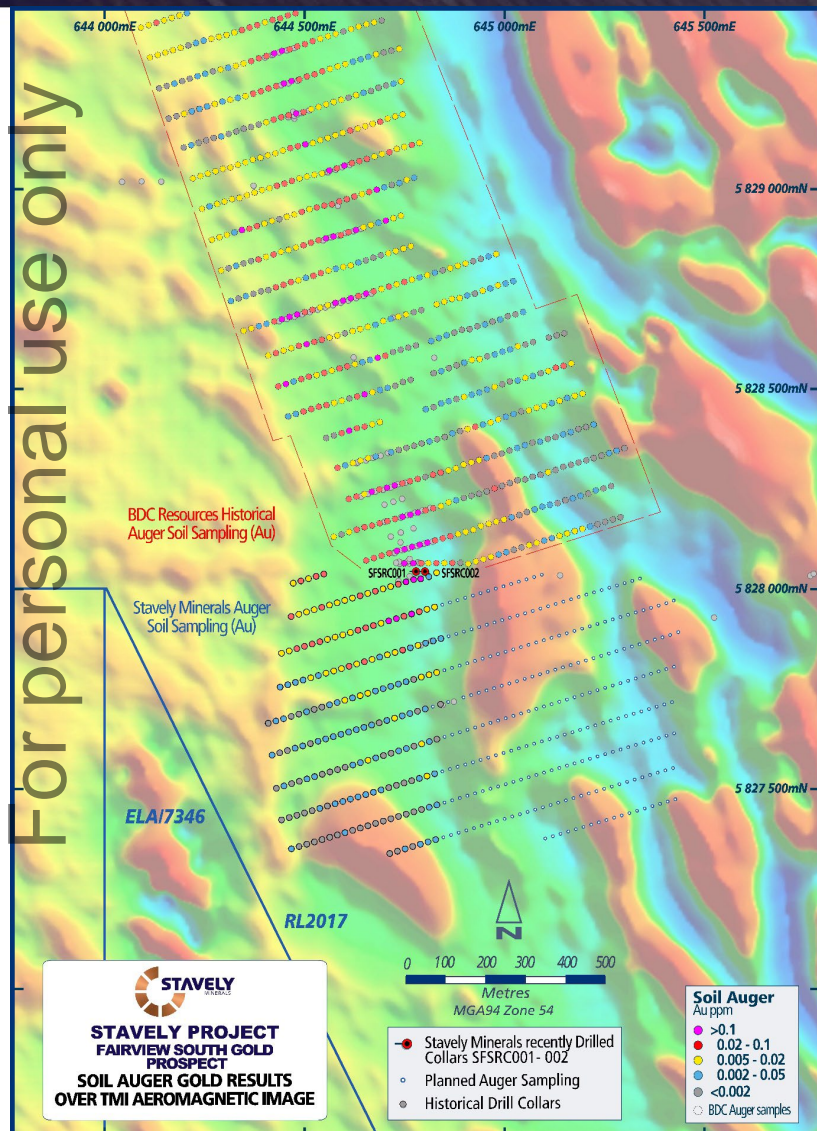
Gold mineralisation extends +400m south of Phase 1 RC drill hole SFSRC001



¹ See ASX:SVY announcement 14 July 2025

Fairview South Soil Auger Geochemistry

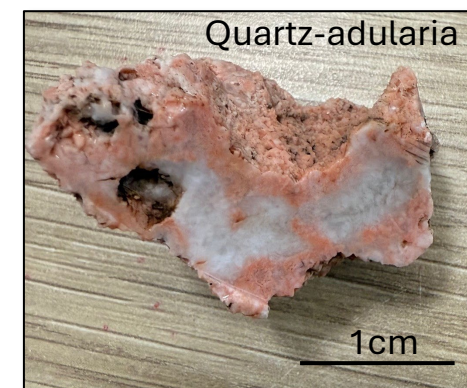
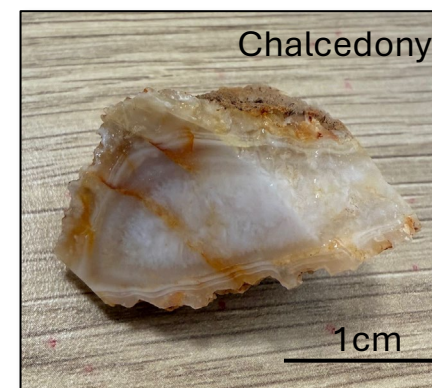
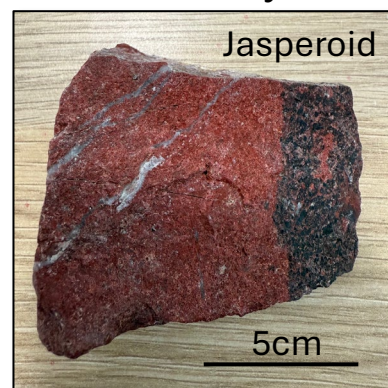
For personal use only



Fairview South gold in soil auger anomaly continues south¹.

Phase 3 RC drilling (9 holes) has been completed, assays pending

- Paddock to the east (under wheat crop) hosts abundant float and outcrop of jasperoid (indicating silica-hematite metasomatism) and chalcedonic silica / ?adularia indicating a low-temperature low-sulphidation affinity.
- Stavely Minerals is not suggesting any grade implications, simply that the area displays a complex history of mineralisation styles from quartz-pyrite-gold (existing drill results), high temperature metasomatism (jasperoid) with magnetite, and low-temperature, low-sulphidation affinity chalcedony and adularia.

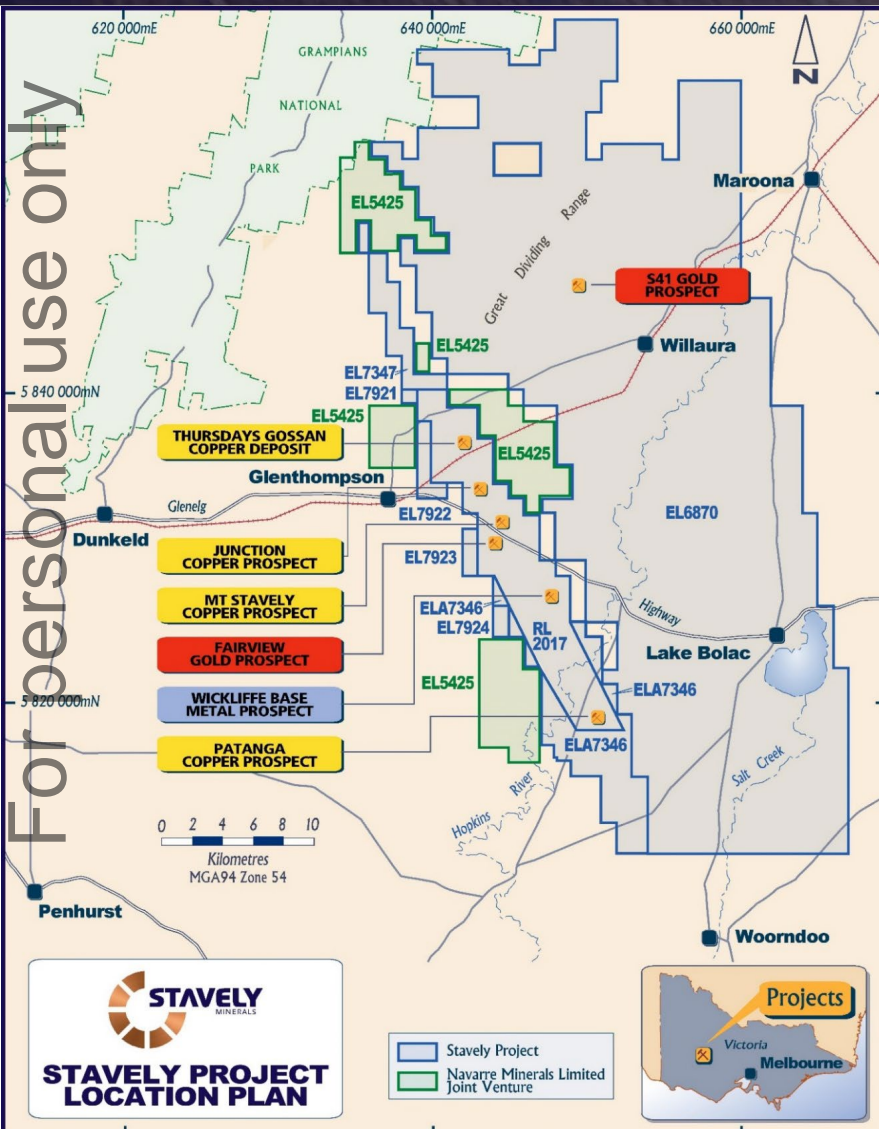


¹ See ASX:SVY announcement 5 November 2025

S41 Breccia-Hosted Gold Target

Full technical presentation from AIG Victorian Round-Up available on www.stavely.com.au

Emerging Discovery? The S41 Breccia Prospect



S41 Breccia-Hosted Gold Prospect

- Identified in Stavely Minerals' Falcon Gravity Gradiometer® survey beneath 50m of basalt
- We are the first to see this gold mineralized system:
 - Identified the geophysical anomaly
 - Drilled through the basalt to discover the gold-base metal anomaly
 - Diamond drilled it and identified the style of system it is: carbonate – base metal – gold
 - Well studied style of gold deposit “most prolific gold production from the SW Pacific Rim” is from this style of gold deposit
- Scale potential for discovery

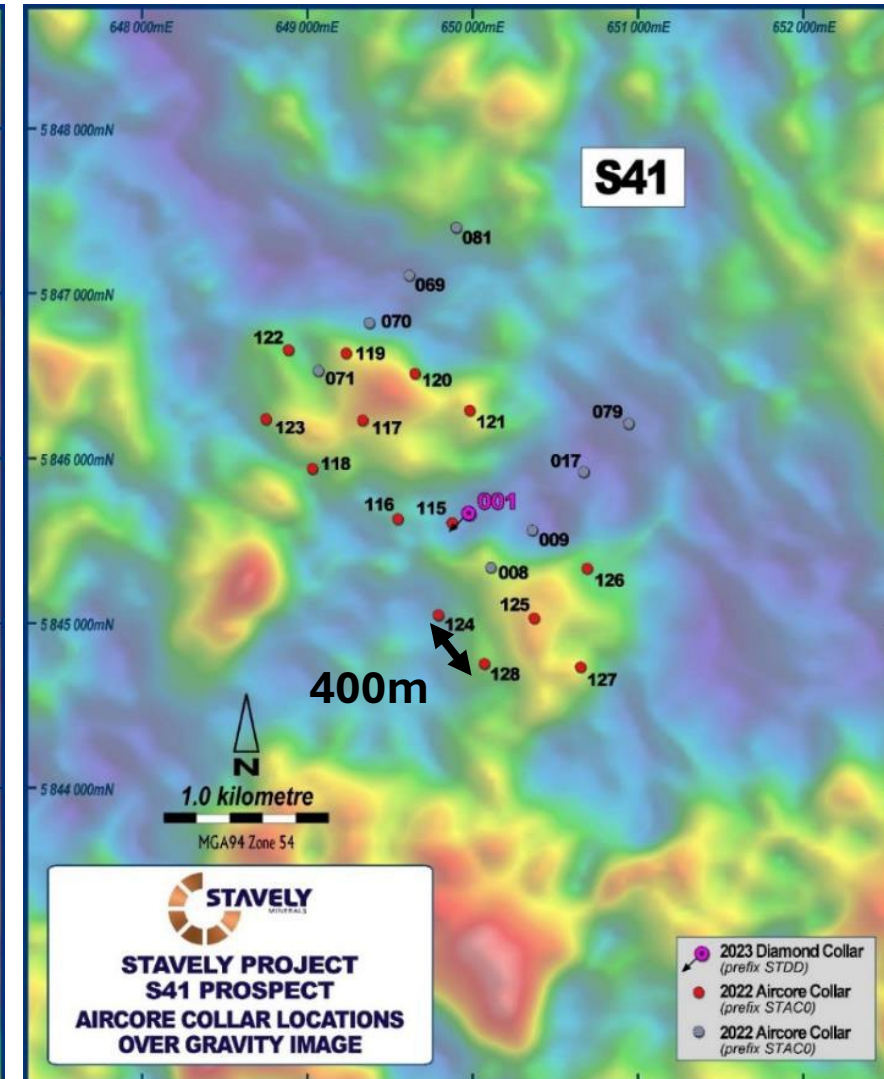
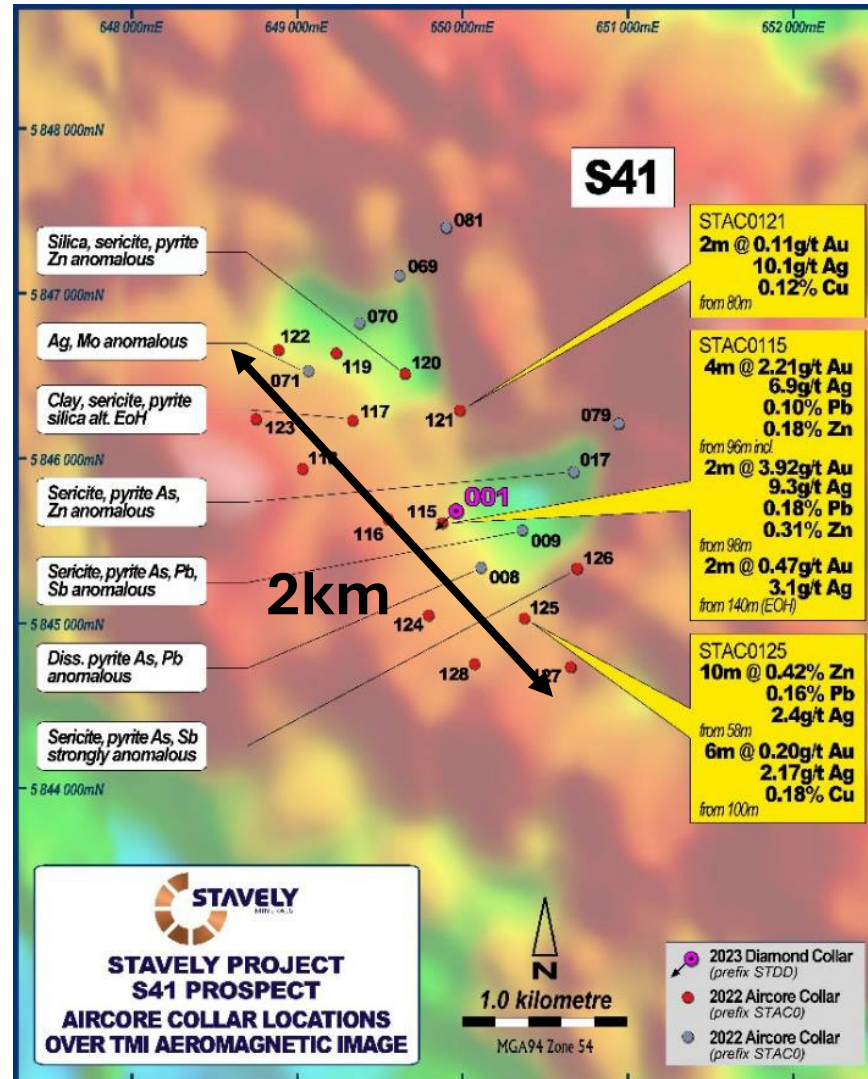
Reconnaissance RC drilling in-progress.

Emerging Discovery? The S41 Breccia Prospect

S41 Prospect Aircore¹

- 4m at 2.21g/t Au from 96m drill depth, including:
- 2m at 3.92g/t Au from 98m in aircore drilling
- Large 2km x 750m alteration zone
- Strongly anomalous base metals and pathfinder geochemistry
- Very wide-spaced aircore drilling at 400m centres (let's call that 3 x football fields apart)

BIG target



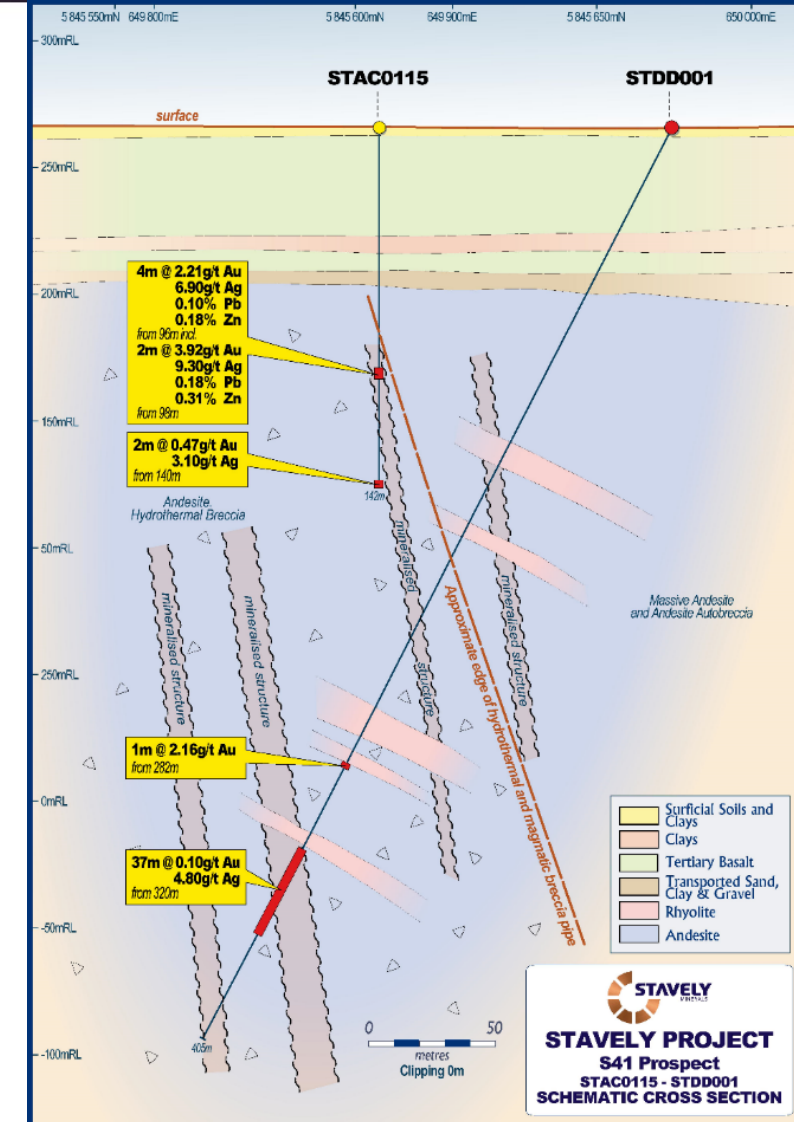
¹See ASX announcement 9 April 2023

The S41 Breccia Prospect – first look STDD001

S41 Diamond Drill Hole¹

- Only one diamond drill hole in the 2,000m x 750m interpreted breccia system
- **1m at 2.16g/t Au** from 282m drill depth
- **37m at 0.10g/t Au**, including:
 - **2m at 0.56g/t Au** from 320m, and
 - **5m at 24.3g/t Ag** from 353m
- Importantly demonstrated that there is gold and silver in the system associated with Mn-carbonate and Zn & Pb base metals
- Breccia-hosted systems host notoriously inconsistent gold mineralization, commonly in sheeted veins on the pipe margin eg. Kidston
- Need to find better 'plumbing' on the edge

¹See ASX announcement 26 April 2023



Brecia-Hosted Carbonate – Base Metal – Gold Systems

For personal use only

| Low sulphidation mineralisation style | | | | | |
|---------------------------------------|--|------------------------------|------------------------------------|---|--|
| Depth | quartz-sulphide Au ± Cu | carbonate-basemetal Au | | | epithermal quartz Au |
| Shallow Cool | opal, chalcedony marcasite ✓ | <u>Sphalerite</u> Fe-poor | <u>Ag sulphosalts</u> acanthite | <u>Carbonate</u> siderite FeCO ₃ | |
| | | white ✓ | | rhodochrosite MnCO ₃ ✓ | quartz |
| | pyrite quartz | yellow | argentite | kutnahorite Ca (MgMgFe)(CO ₃) ₂ | high fineness free Au |
| | | red | + galena | ankerite CaCO ₃ (MgFe)CO ₃ ✓ | Te minerals hessites tellurobismuthenite |
| Hot Deep | | brown | tennantite tetrahedrite | dolomite CaCO ₃ .MgCO ₃ | |
| | | black | | Mg calcite | |
| | chalcopryrite, pyrrhotite specularite | Fe-rich | | calcite CaCO ₃ | |

For personal use only

CORBETT ai1851

**'goldilocks' gold
precipitation zone**

Emerging Discovery?

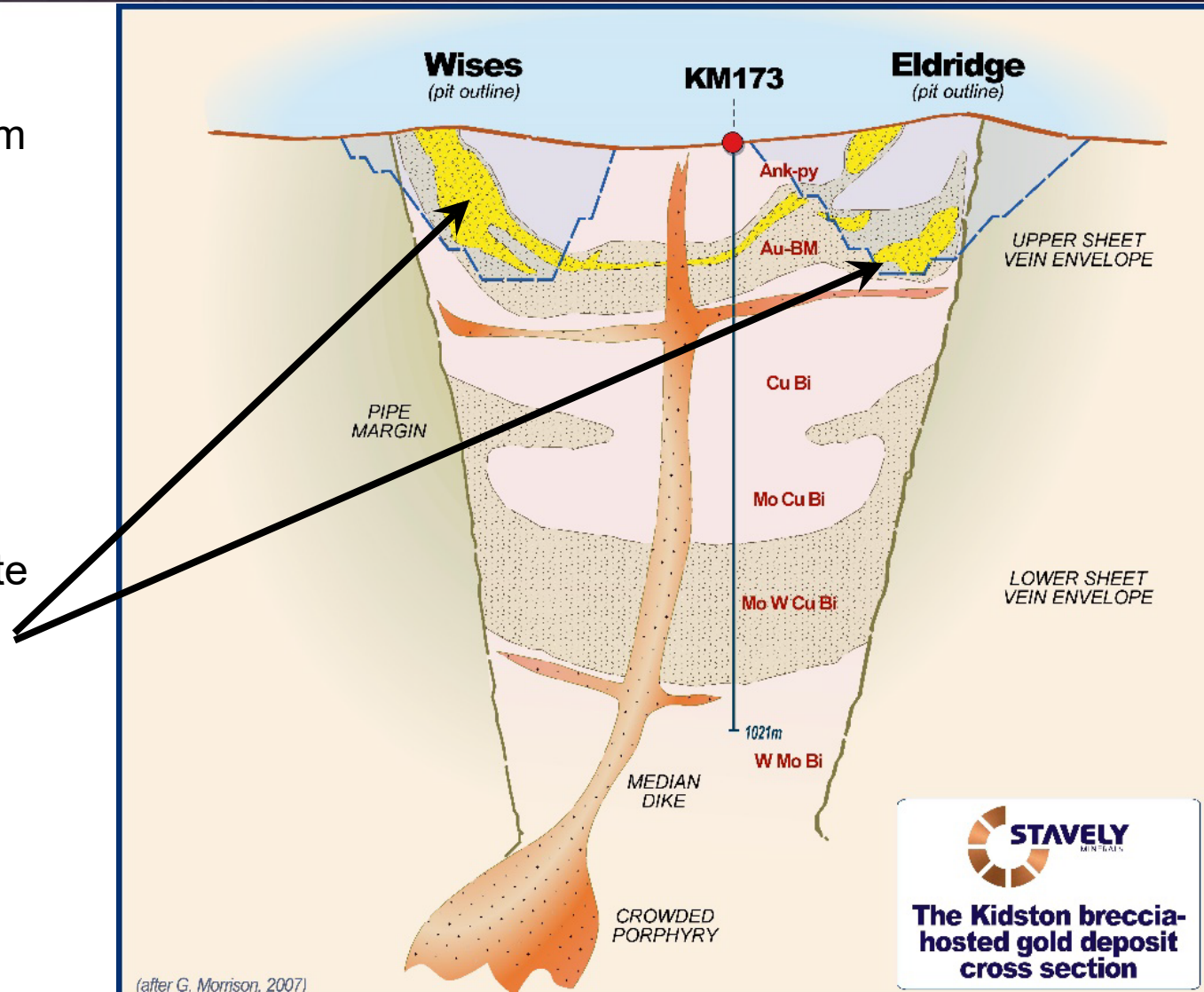
The S41 Breccia-Hosted Gold Prospect



S41 Diamond Drill Hole¹

- Only one diamond drill hole in the 2,000m x 750m interpreted breccia system
- **1m at 2.16g/t Au** from 282m drill depth
- **37m at 0.10g/t Au**, including:
 - **2m at 0.56g/t Au** from 320m, and
 - **5m at 24.3g/t Ag** from 353m
- Importantly demonstrated that there is gold and silver in the system associated with Mn-carbonate and Zn & Pb base metals
- Breccia-hosted systems host notoriously inconsistent gold mineralization, commonly in sheeted veins on the pipe margin eg. Kidston
 - Potential for scale
 - BIG target

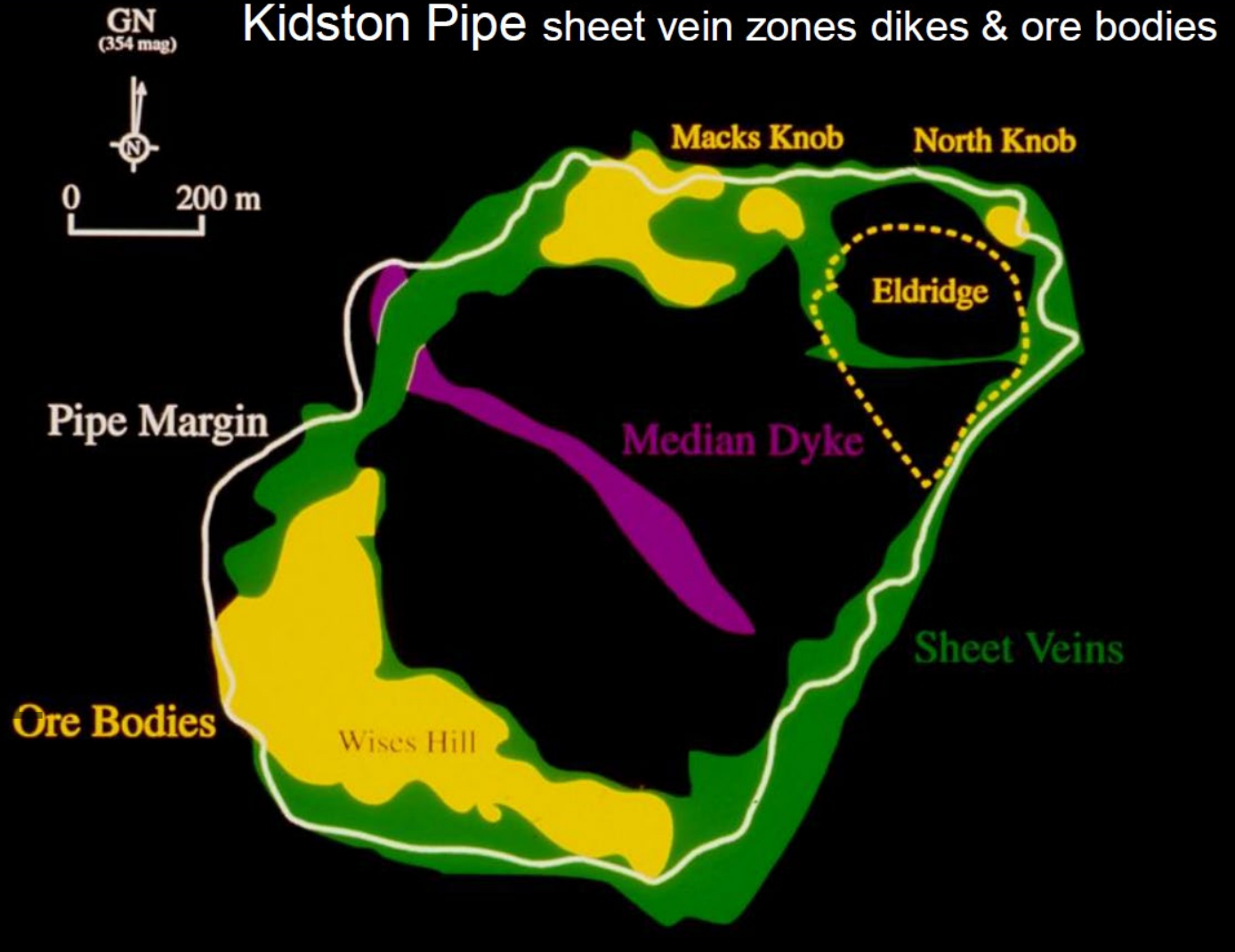
¹See ASX announcement 26 April 2023



The Kidston breccia-hosted gold deposit cross section

Kidston Breccia Pipe Outline and Sheeted Vein Mineralisation

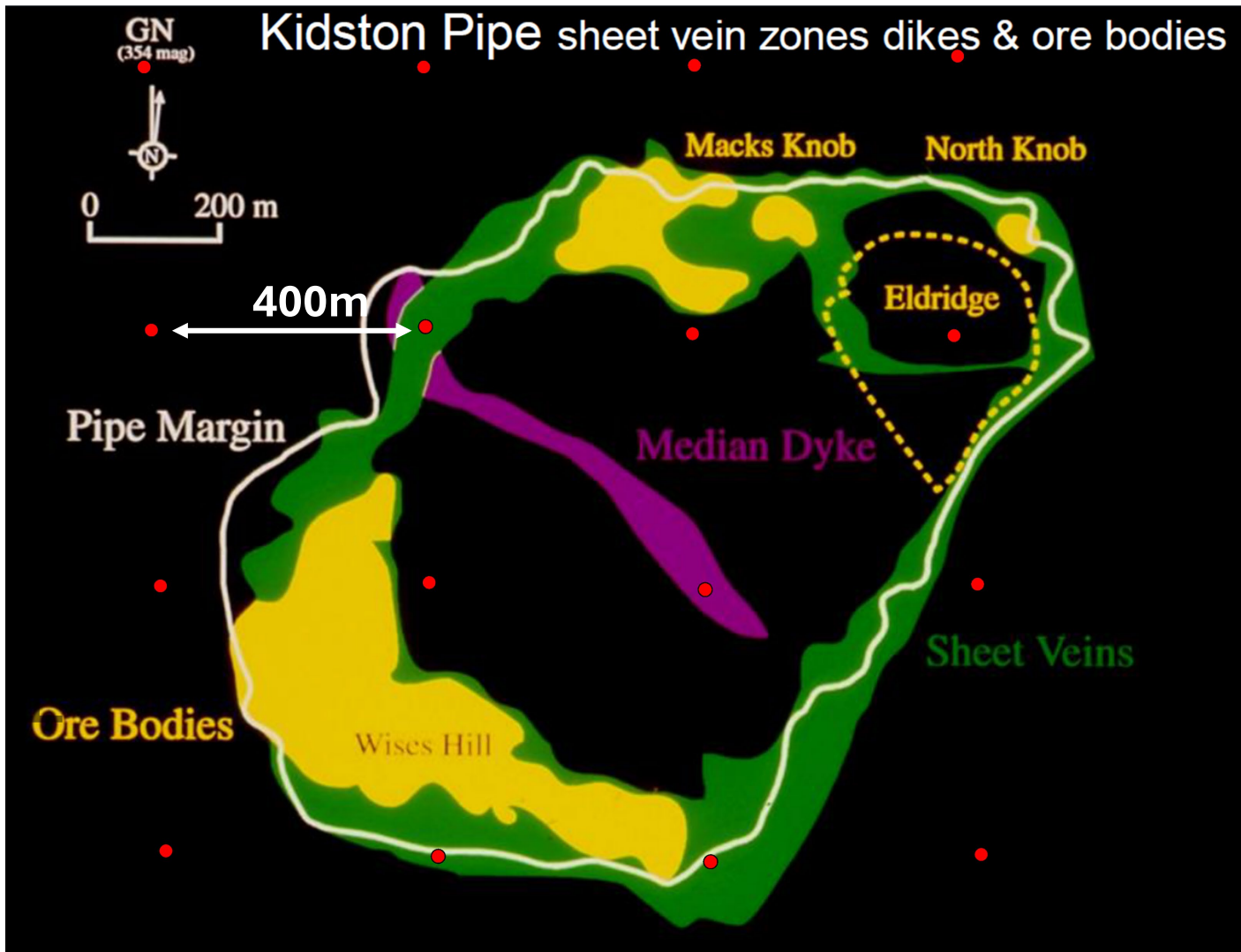
Kidston Pipe sheet vein zones dikes & ore bodies



Kidston

- Gold mineralisation hosted in peripheral sheeted veins

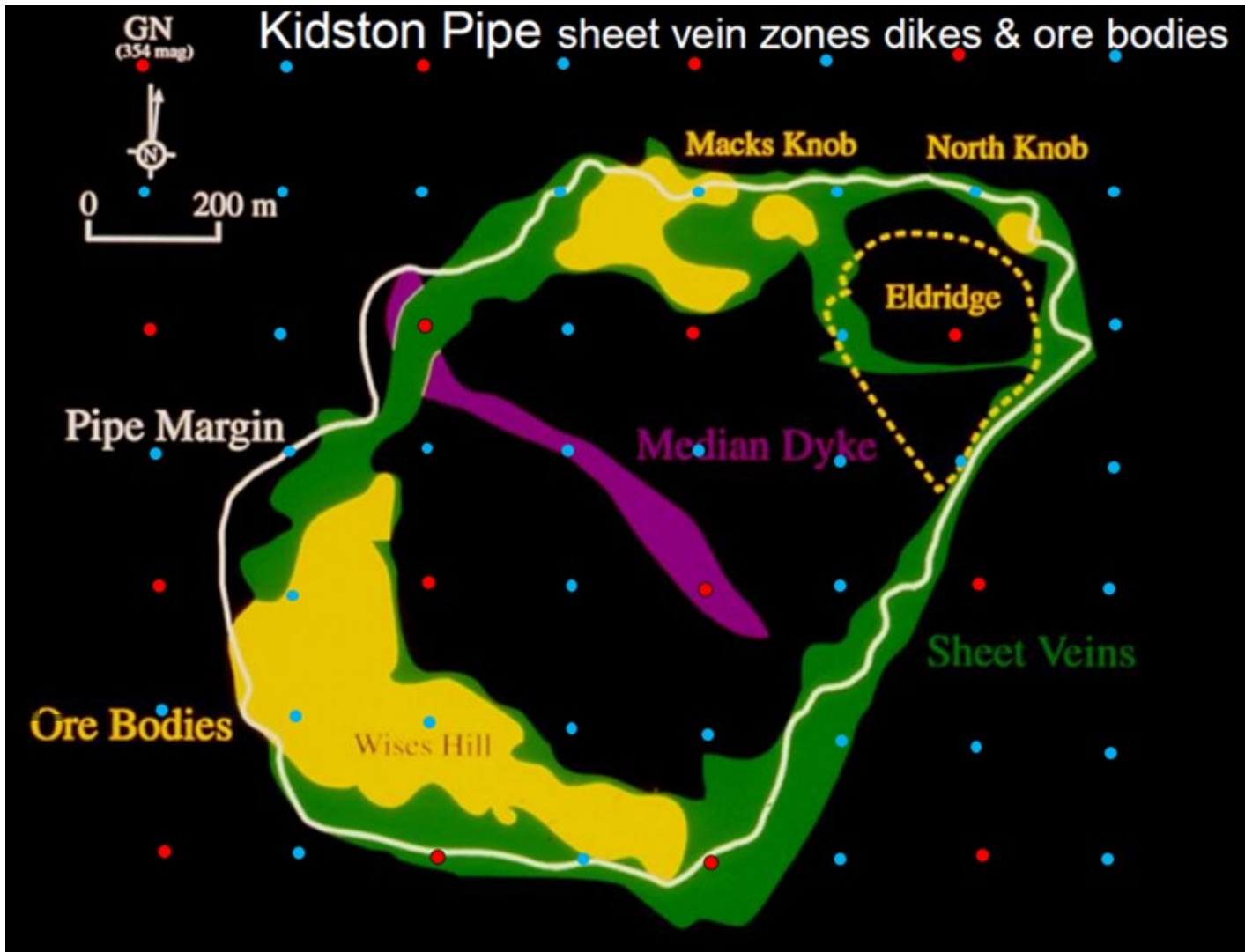
Kidston with 400m-spaced drill holes



Kidston

- Gold mineralisation hosted in peripheral sheeted veins
- Conceptual 400m-spaced aircore drill spacing similar to the existing spacing at S41

Kidston with 200m-spaced drill holes



Kidston

- Proposed 200m-spaced aircore drill infill

- 400m spaced aircore
- 200m spaced aircore

The S41 Breccia-Hosted Gold Prospect

- In-fill reconnaissance RC drilling to 200m x 200m



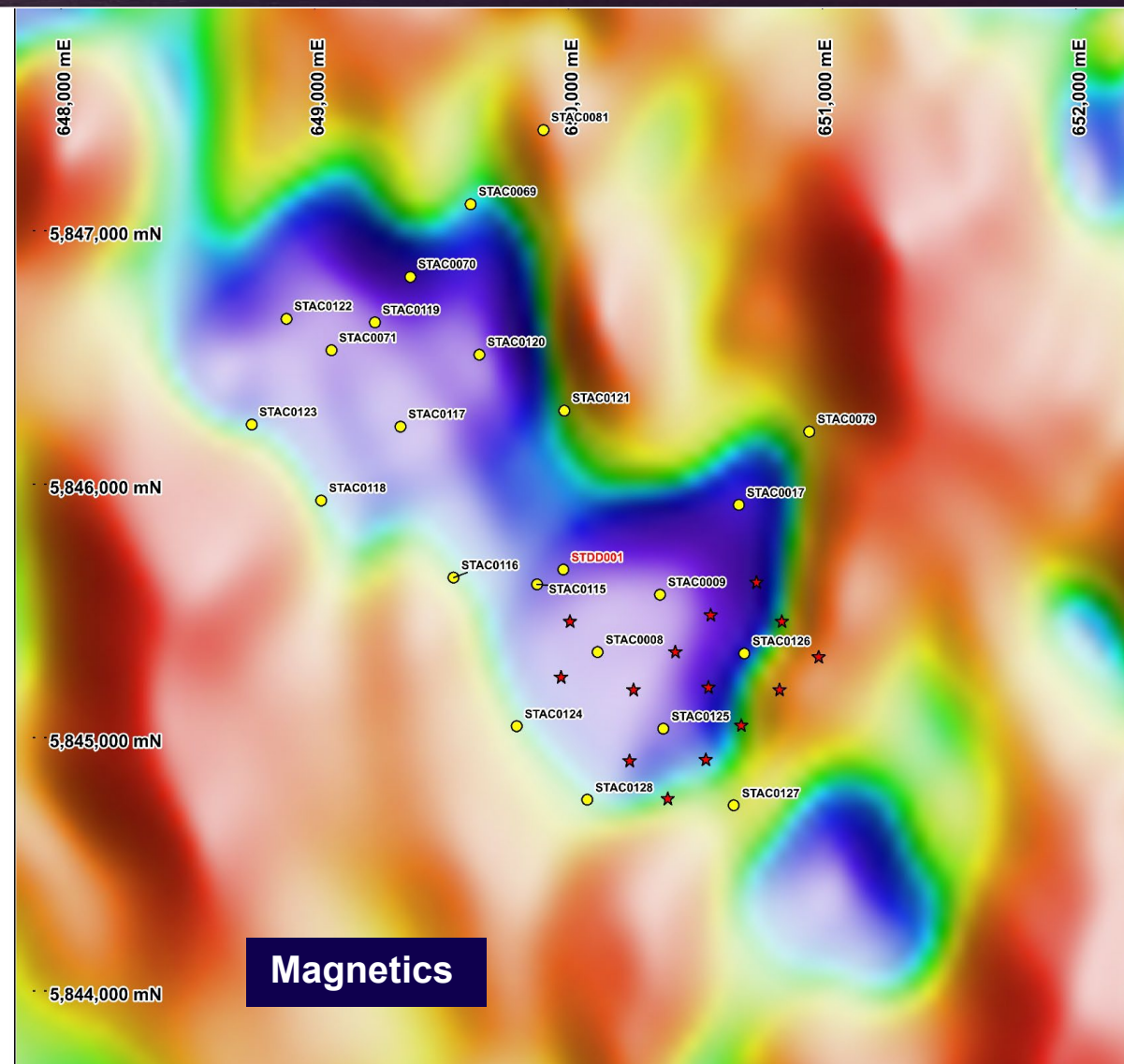
S41 Reconnaissance RC

- Quicker to get through ~50m (ave.) of younger basalt cover than aircore
- Able to drill to ~180m if warranted (aircore runs out of puff ~65-100m)
- Drilling in-progress (red stars)
- **4m at 2.21g/t Au** from 96m drill depth in aircore drill hole STAC115¹, including:
 - **2m at 3.92g/t Au** from 98m

Very large hydrothermal system. Gold in the system.

Large-scale discovery opportunity

¹See ASX announcement 9 April 2023

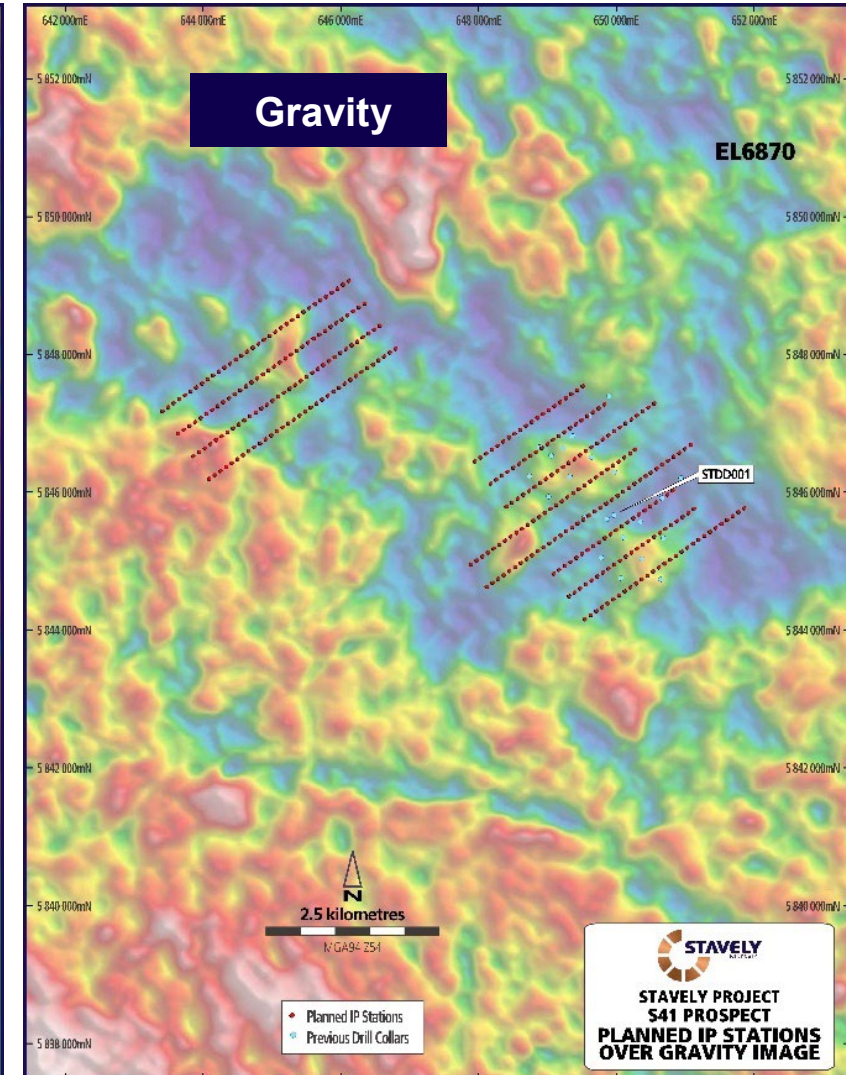
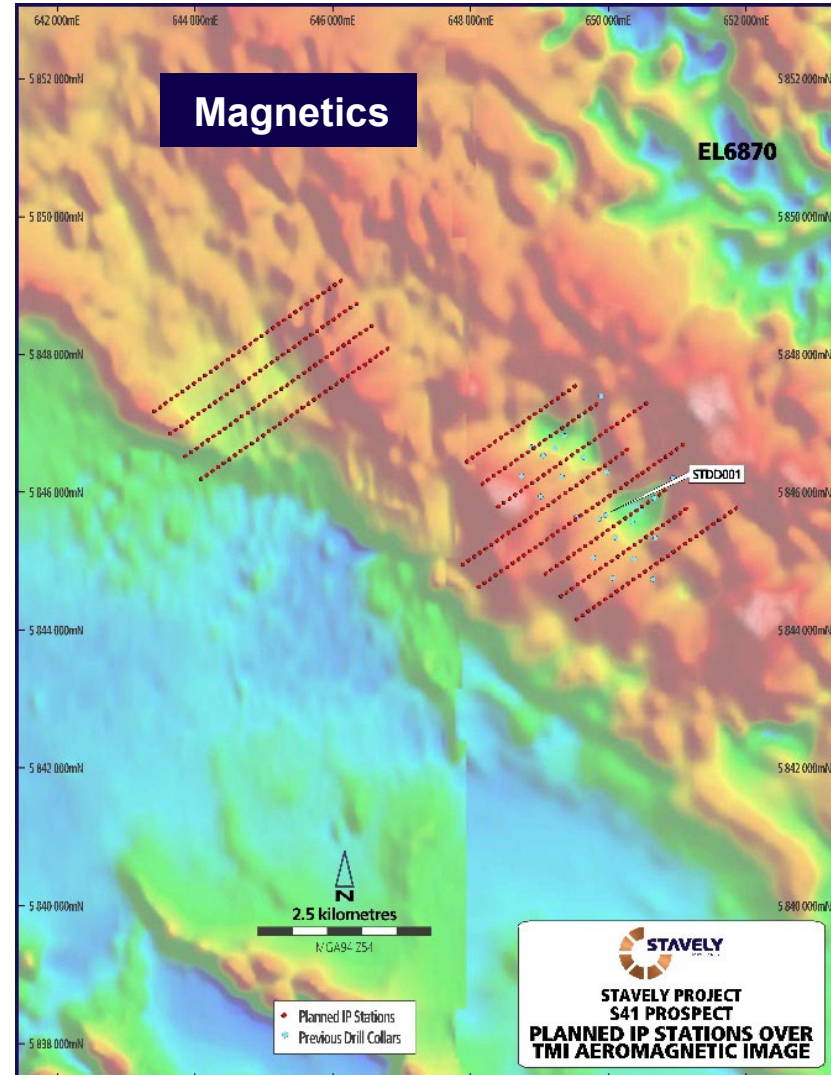


The S41 Breccia-Hosted Gold Prospect - Map out sulphides with IP



S41 Prospect Geophysics¹

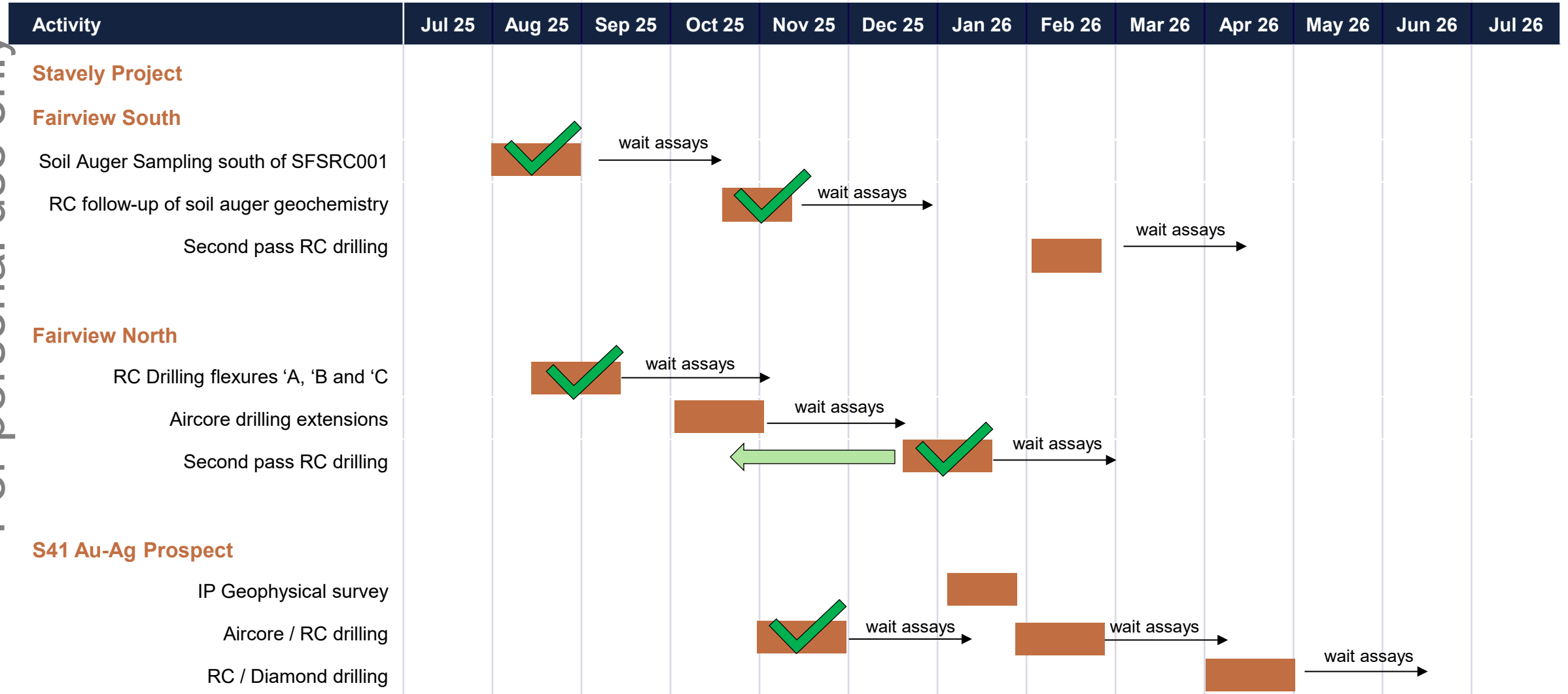
- Proposed Induced Polarisation (IP) geophysical program
- Should 'see' through the basalt and identify zones of better developed sulphide mineralisation
- Follow-up aircore drilling and then, based on results, likely RC / diamond drilling – including extending STDD001



¹See ASX announcement 21 January 2025

9 Month Work Programme – Drilling Intensive, High Impact

For personal use only



Corporate Summary

Capital Structure

ASX TICKER

SVY

Share Price (18.11.25)

\$0.017

Shares on Issue

685M

Cash (30.9.25)

\$1.7M

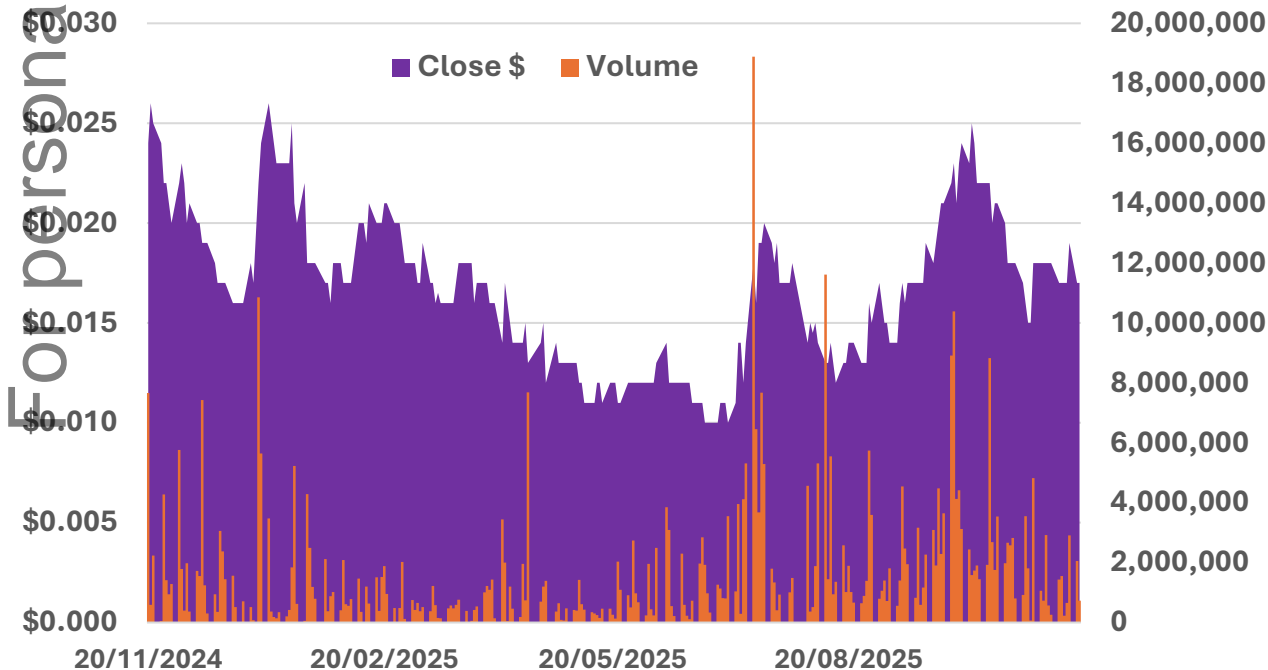
Market Capitalisation

\$11.6M

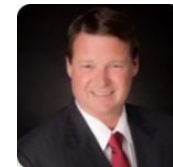
Management & Staff

~9% equity

12-month Share Price to 19 November 2025



Directors



Chris Cairns
EXECUTIVE CHAIR



Peter Ironside
NON-EXECUTIVE DIRECTOR



Rob Dennis
NON-EXECUTIVE DIRECTOR



Jennifer Murphy
TECHNICAL DIRECTOR



Amanda Sparks
NON-EXECUTIVE DIRECTOR
& COMPANY SECRETARY

Summary – Key investment takeaways



Big targets

The Cayley Lode is a quality high-grade copper-gold-silver Mineral Resource from surface

Two-fold strategy to unlock value:

- 1) Find more copper to justify development
- 2) Find enough gold to develop

Junction copper-silver (aircore drilling impressive assays)
– gaining access a priority

Renewed focus on gold targets

we control
~130km strike of fertile volcanic belt

Fairview North & South gold prospects;

two priority targets to be drill defined, assays pending

S41 breccia-hosted gold opportunity

– scale potential with only 1 diamond drill hole to date



Gold Strategy Webinar

**Investor Webinar Stavely Minerals
Gold Discovery Opportunities in the Stavely Volcanic Belt**

www.stavely.com.au/investors/media/

For personal use only

Contact us

Stavely Minerals Limited

L1, 168 Stirling Highway

Nedlands WA 6009

P - 08 9287 7630

E - info@stavely.com.au

www.stavely.com.au

The information in this presentation is extracted from information available to view on www.stavely.com.au. The Company confirms that it is not aware of any new information or data that materially affects the information included in the original market announcement and, in the case of estimates of Mineral Resources or Ore Reserves, that all material assumptions and technical parameters underpinning the estimates in the relevant market announcement continue to apply and have not materially changed. The Company confirms that the form and context in which the Competent Person's findings are presented have not been materially modified from the original market announcement.

Appendix 1: Mineral Resources

Appendix 1: Mineral Resources Classifications

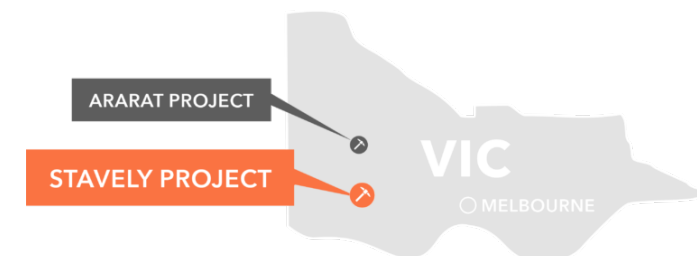
Table 1. Cayley Lode Initial Mineral Resource estimate

| Resource Material | Resource Category | Cut-off | Tonnes (Mt) | Grade | Cont. | Grade | Cont. | Grade | Cont. |
|-----------------------------|-------------------|---------|-------------|--------|-----------|----------|---------|----------|-----------|
| | | (Cu %) | | (Cu %) | Cu (Mlbs) | (Au g/t) | Au (oz) | (Ag g/t) | Ag (oz) |
| Primary Mineralisation (OP) | Indicated | 0.2 | 5.87 | 1.04 | 134.4 | 0.23 | 43,407 | 7 | 1,321,074 |
| | Inferred | 0.2 | 1.7 | 1.3 | 49 | 0.2 | 10,931 | 9 | 491,907 |
| Sub-Total Primary OP | | | 7.6 | 1.1 | 183 | 0.2 | 54,338 | 7.4 | 1,808,158 |
| Primary Mineralisation (UG) | Indicated | 1.0 | - | - | - | - | - | - | - |
| | Inferred | 1.0 | 1.7 | 1.8 | 69 | 0.2 | 10,931 | 6 | 327,938 |
| Sub-Total Primary UG | | | 1.7 | 1.8 | 69 | 0.2 | 10,931 | 6 | 327,938 |
| Total Cayley Lode | | | 9.3 | 1.23 | 252 | 0.23 | 65,000 | 7.1 | 2,100,000 |

Table 4. Stavelly Minerals Total Mineral Resources estimates

| Resource Material | Resource Category | Cut-off | Tonnes (Mt) | Grade | Cont. | Grade | Cont. | Grade | Contained Metal | Grade | Cont. |
|-------------------------|-------------------|---------|-------------|--------|-----------|----------|---------|----------|-----------------|--------|---------|
| | | (Cu %) | | (Cu %) | (Mlbs Cu) | (Au g/t) | (oz Au) | (Ag g/t) | (oz Ag) | (Zn %) | (kt Zn) |
| Total Resources | Indicated | 1 | 21.5 | 0.61 | 288 | 0.1 | 67,301 | 3.1 | 2,153,972 | 0.3 | 8 |
| | Inferred | 1 | 6.8 | 1.2 | 175 | 0.1 | 32,797 | 4.7 | 1,043,839 | 0.2 | 16 |
| Total Stavelly Minerals | | | 28.3 | 0.75* | 463 | 0.11* | 100,000 | 3.5 | 3,200,000 | 0.2 | 24 |

¹ Reported in compliance with the JORC Code 2012, see ASX announcement 14 June 2022



Cayley Lode bornite mineralisation – photo from ASX announcement 11 September 2019