

BM8 Secures Strategic Critical Minerals Ge-Ga Tenure Apex, Utah, USA

HIGHLIGHTS

- **Strategic Expansion – Apex Project (Utah, USA):** Battery Age has staked 129 mining claims (~2,660 acres) surrounding the historic Apex Mine in the Beaver Dam Mountains, marking the Company's first Germanium and Gallium asset in the USA.
- **The Apex Mine - World's First Primary Germanium–Gallium Mine:** The Apex Mine (also known as Dixie Mine) was the first operation globally developed primarily for germanium and gallium production, reporting grades up to **0.7 % Ge (7,000 g/t)** and **2 % Ga (20,000 g/t)**, together with **180,000 oz silver** produced¹.
- **Highly Prospective Geological Setting:** Mineralisation is hosted within brecciated and dolomitised Callville Limestone beneath the Pakoon Dolomite, controlled by the Apex Fault, a reverse-fault structure with ~75 m vertical displacement and intense supergene enrichment to depths exceeding 425 m. BM8's staking has been specifically designed to capture the key structural corridors and stratigraphic horizons associated with the Apex Mine's historical germanium-gallium mineralisation.
- **Critical US Supply Opportunity:** Apex represents one of the only known high-grade Ge–Ga systems in the United States, positioned in a region of strategic importance amid ongoing US efforts to re-establish secure domestic supply chains for semiconductor-critical metals.
- **Complementary to Bleiberg:** The Apex Project complements BM8's Bleiberg Project in Austria, surrounding one of the world's largest historical germanium producers (~5.5 Moz Ge)³. Together, these assets establish a strong Western-aligned germanium footprint spanning the United States and the European Union.
- **Advanced Germanium Research Partnership – University of Sydney:** A consultancy agreement and exclusive option has been executed with the **University of Sydney's School of Chemical and Biomolecular Engineering** to test and assess advanced recovery techniques for germanium, with potential future applications in tailings reprocessing and concentrate enhancement across BM8's project portfolio.
- **Technology Development – Expanding Germanium Platform:** Battery Age is actively assessing **additional germanium enrichment, recycling and application technologies** to complement its Ge focus, further aligning the Company with emerging Western initiatives in semiconductor and advanced-materials supply chains.

Battery Age Minerals Ltd (ASX: **BM8**; “**Battery Age**” or the “**Company**”) is pleased to announce the staking of over 129 unpatented lode mining claims covering approximately 2,660 acres adjacent to the historic Apex Germanium–Gallium Mine in southern Utah, USA.

The newly secured Apex Project positions Battery Age within one of the only known high-grade germanium–gallium systems in the United States, a region of renewed strategic importance given the country’s total reliance on imported Ge and Ga, metals critical to semiconductors, fibre-optics, military radar, and satellite systems.



Figure 1: The Apex project, located in south-west Utah, USA

Located on the eastern flank of the Beaver Dam Mountains, approximately 22 km west of St George and 9 km north of the Arizona border, the project benefits from exceptional infrastructure including highway access, proximity to power and rail, and year-round field access. The tenure consists of 129 unpatented Bureau of Land Management lode claims, arranged in two blocks covering ~2,660 acres. The southern block directly overlies the most favourable exposures of the Pakoon Dolomite–Callville Limestone contact, the key stratigraphic and structural control to mineralisation at the Apex Mine, while the northern block captures the concealed continuation of this horizon.

For personal use only

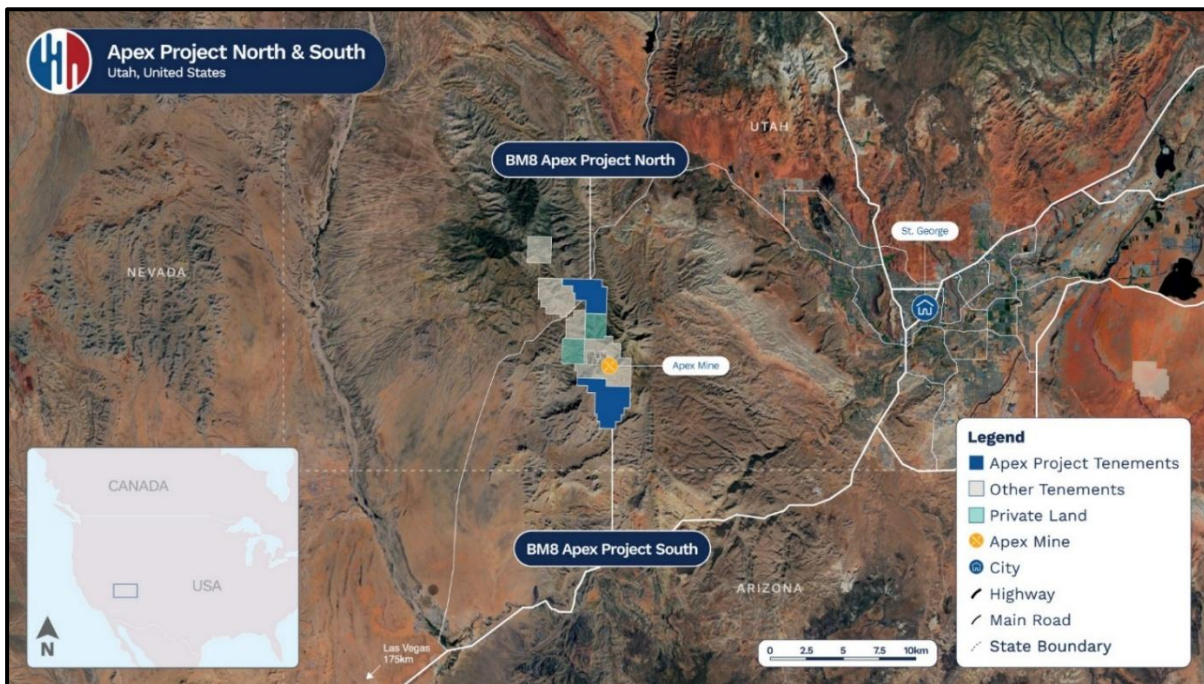


Figure 2: BM8's project tenure adjacent to the Historic Apex Mine, USA

Mineralisation at Apex Mine is hosted within the Pennsylvanian Callville Limestone beneath the Permian Pakoon Dolomite, along the Apex Fault Zone, a reverse-fault structure exhibiting up to 75 m of vertical displacement. The deposit style is a fault-controlled, carbonate-hosted Ge–Ga–Cu–Pb–Zn–Ag system featuring intense dolomitisation, silicification and oxidation extending to depths exceeding 425m¹.

Battery Age CEO, Nigel Broomham, commented:

“The Apex staking marks an important milestone for Battery Age as we expand our germanium-gallium mineral portfolio to the United States. The adjacent Apex Mine is the only deposit of its kind in the country, historically producing copper, lead and silver before revealing exceptional germanium and gallium enrichments in the 1980s – and we have secured the prospective ground containing the key stratigraphic and structural controls to the mineralisation at Apex.

Our flagship Bleiberg Project in Austria remains one of the world’s most historically significant sources of germanium, providing Battery Age with a large, strategic foothold in the heart of the European Union. The addition of Apex strengthens this position, complementing Bleiberg with a highly prospective North American counterpart and broadening our exposure to two globally important jurisdictions for future germanium supply.

We are also extremely excited to have executed an agreement with the University of Sydney, positioning Battery Age at the forefront of advanced germanium recovery and recycling research. This end-to-end approach is designed to enable BM8 to deliver secure, Western-aligned supply of critical semiconductor metals.”

For personal use only

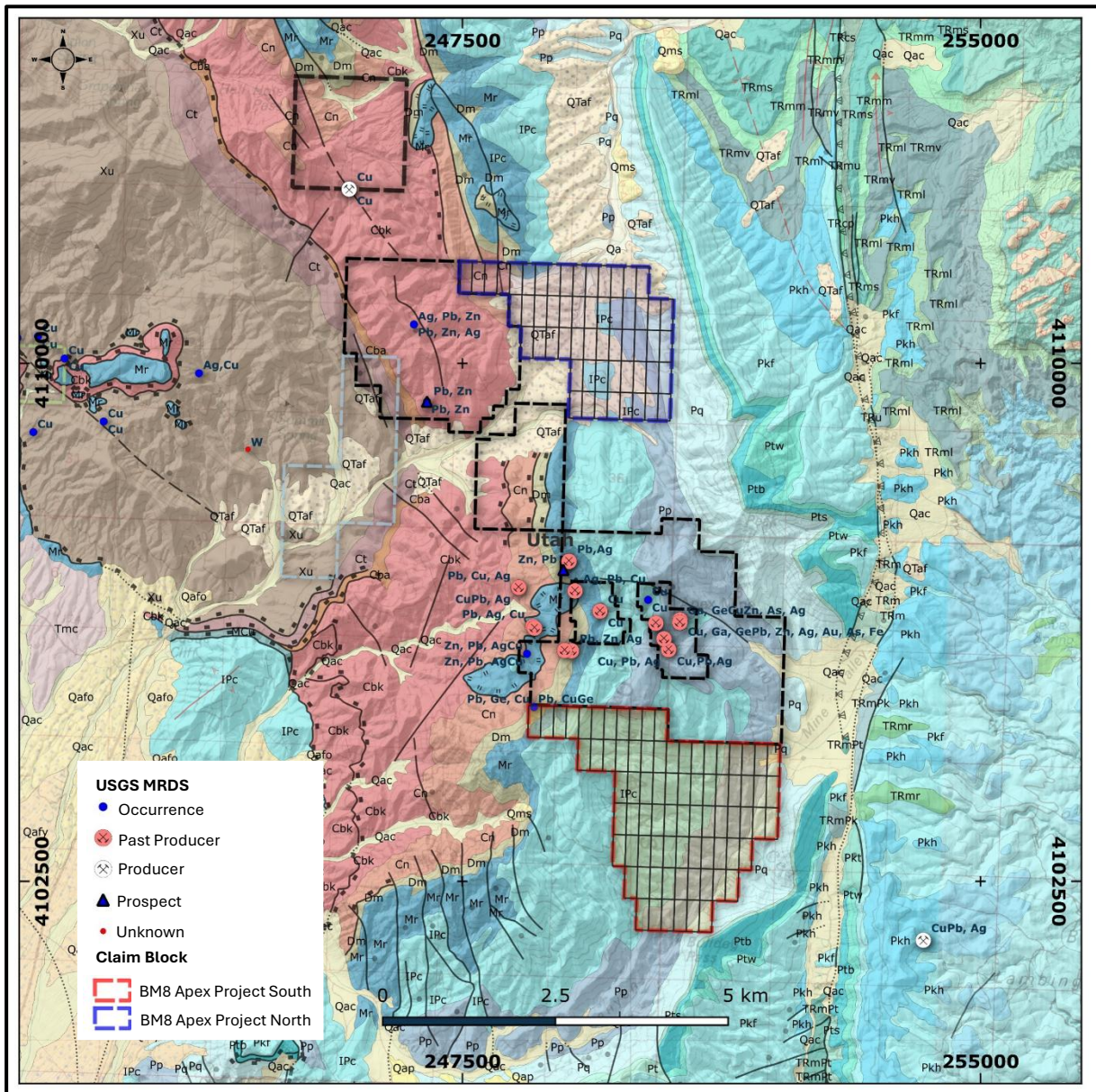


Figure 3: BM8's Apex Project, specifically designed to capture the key structural corridors and stratigraphic horizons associated with the Apex Mine's historical germanium-gallium mineralisation

Strategic Importance of Germanium

Germanium (Ge) is classified as a critical mineral by the US, EU and Australia due to its indispensable role in advanced electronics and defence technologies and its high supply-chain risk.

- **Fibre optics & telecoms:** Provides the core refractive material for high-bandwidth cables linking data centres and satellite networks.
- **Semiconductors & AI chips:** Used in Si-Ge transistors and photonic circuits enabling high-speed AI and quantum computing.
- **Infrared optics:** Essential for night-vision and thermal-imaging systems in defence, space and medical applications.

- **Renewable energy:** Critical component in high efficiency multijunction solar cells used on satellites and spacecraft.

China currently accounts for >80 % of global germanium refining, and its 2023 export controls underscored the West's strategic vulnerability. In direct response, American Elements announced expansion of germanium and gallium production capacity at its Salt Lake City, Utah facilities to support domestic supply-chain resilience, demonstrating both the growing US demand for these metals and the strategic advantage of projects located within favourable jurisdictions such as Apex.

Battery Age's portfolio, including Bleiberg (Austria) and now Apex (USA), is specifically aligned to potentially help bridge this supply gap through Western, ESG-compliant development, offering exposure to two of the most strategically significant germanium provinces in the world.

University of Sydney Collaboration

Battery Age has entered into a Consultancy Agreement with the University of Sydney, led by research team from the School of Chemical and Biomolecular Engineering including Professor Kourosh Kalantar-Zadeh, Dr Francois Allieux and Mr Luis Gustavo Campos to test and assess advanced recovery techniques for germanium.

The project will test certain advanced recovery techniques for germanium with provision for BM8 to have access to the project outcomes for testing and evaluation. Should BM8 wish to have long term use, it holds an exclusive option to negotiate a licence to use both any project resulting IP and specified University background IP, limited to the field of germanium extraction.

This initiative provides BM8 with exposure to cutting-edge recovery and recycling research, complementing its exploration and development programs and supporting its broader strategy to establish a vertically integrated germanium supply platform.

References:

1. U.S. Geological Survey Bulletin 1577 , Bernstein, L.R. (1986). Geology and Mineralogy of the Apex Germanium–Gallium Mine, Washington County, Utah. U.S. Geological Survey Bulletin 1577, United States Government Printing Office, Washington, D.C.
2. Refer to Bleiberg earn-in terms and structure set out in the Company's announcement dated 16 May 2024 and Prospectus dated 7 December 2022.
3. Zeeh,S. and Bechstadt,T. (1994). Carbonate-Hosted Pb-Zn Mineralisation at Bleiberg-Kreuth (Austria): Compilation of Data and New Aspects. In: Fontbote,L. and Boni,M. editors, Sediment Hosted Pb-Zn Ores, Special Publication No. 10 of the Society for Geology Applied to Mineral Deposits. pp. 271-2962.
Cerny,I. (1991). Lagerstättenforschung in Kärnten Neuergebnisse und Aspekte für die Zukunft. Carinthia 181./101. Jahrgang S. 119-129 Klagenfurt 1991.
Cerny,I. and Schroll,E. (1995). Spezialmetallgehalte in ZnS-Konzentraten der Lagerstätte Bleiberg-Kreuth. Arch. f. Lagerst.forsch. Geol. B.-A. ISSN 0253-097X Band 18 S. 5–33 Wien, Juni 1995.
Schroll,e. (2006). Neues zur Genese der Blei-Zink Lagerstätte Bleiberg. Carinthia II 196./116. Jahrgang Seiten 483-500 Klagenfurt 2006.
Multi-Met (2023) Bleiberg Project - Multi-Met, Multi. Available at: <https://multimetdev.com/projects/bleiberg-project/>.
Schor, D. (2021) TSMC details 5 nm, WikiChip Fuse. Available at: <https://fuse.wikichip.org/news/3398/tsmc-details-5-nm/> (Accessed: 25 February 2024).

Leach. D, Taylor. R, Fey. D et al.(2010), , A deposit model for Mississippi Valley-Type lead-zinc ores, USGS Scientific Investigations Report 2010-5070-A.

Mining Insights Pty Ltd, Independent Geologists Report, 1 December 2022.

4. Refer to Announcement Breakthrough Germanium Grades up to 1,500 g/t Identified in Bleiberg Concentrates; 17 April 2025.
5. Refer to Announcement Battery Age secures highly prospective corridor- Expands Bleiberg Project; 29 January 2025
6. Refer to Announcement Battery Age Minerals Triples Austrian Footprint along historic High-Grade Germanium mining corridor; 18 December 2024 & 23 December 2024.

[ENDS]

Release authorised by the Board of Battery Age Minerals Ltd.

Contacts

Investors / Shareholders

Nigel Broomham
Chief Executive Officer
P: +61 (0)8 6109 6689
E: info@batteryage.au

Media

Kelly-Jo Fry
Battery Age Minerals
P: +61 (0)8 6109 6689
E: kjfry@batteryage.au

Competent Person Statement

The Australasian Code for Reporting of Exploration Results, Mineral Resources and Ore Reserves (the 'JORC Code') sets out minimum standards, recommendations and guidelines for Public Reporting in Australasia of Exploration Results, Mineral Resources and Ore Reserves.

The information in this release that relates to Exploration Results is based on information prepared by Dr Simon Dorling. Dr Dorling is a member of the Australian Institute of Geoscientists (Member Number: 3101) and a consultant of Battery Age. Dr Dorling has sufficient experience which is relevant to the style of mineralisation and type of deposit under consideration and to the activity which they are undertaking to qualify as a Competent Person as defined in the 2012 Edition of the JORC Code (Australasian Code for Reporting of Exploration Results, Mineral Resources and Ore Reserves). Dr Dorling consents to the inclusion in the release of the matters based on their information in the form and context in which it appears.

Compliance Statement

This report contains information on the Bleiberg Project extracted from an ASX market announcement dated 8 December 2022, 2 February 2023, 13 July 2023, 26 February 2024, 26 March 2024, 16 May 2024, 18 December 2024, 23 December 2024, 22 January 2025, 28 January 2025 and 17 April 2025 released by the Company and reported in accordance with the 2012 edition of the "Australasian Code for Reporting of Exploration Results, Mineral Resources and Ore Reserves" (JORC Code). The original market announcement is available to view on www.batteryage.au and www.asx.com.au. Battery Age is not aware of any new information or data that materially affects the information included in the original market announcement.

Forward-Looking Statement

This announcement may contain certain forward-looking statements and projections. Such forward looking statements/projections are estimates for discussion purposes only and should not be relied upon. Forward looking statements/projections are inherently uncertain and may therefore differ materially from results ultimately achieved. Battery Age Minerals Limited does not make any representations and provides no warranties concerning the accuracy of the projections and disclaims any obligation to update or revise any forward-looking statements/projects based on new information, future events or otherwise except to the extent required by applicable laws. While the information contained in this report has been prepared in good faith, neither Battery Age Minerals Limited or any of its directors, officers, agents, employees or advisors give any representation or warranty, express or implied, as to the fairness, accuracy, completeness or correctness of the information, opinions and conclusions contained in this announcement.

Appendix 1

For personal use only

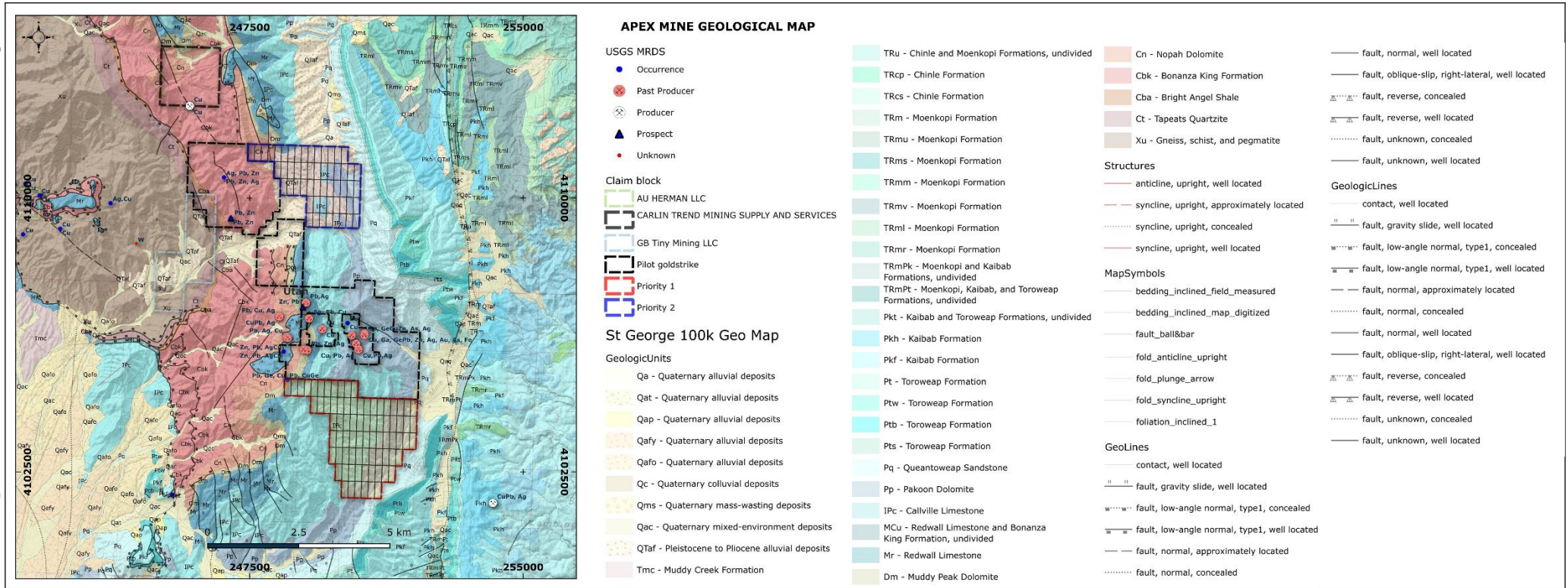


Figure 4: BM's Apex Project Geology, specifically designed to capture the key structural corridors and stratigraphic horizons associated with the Apex Mine's historical germanium-gallium mineralisation