



14 August 2025

# For announcement to the ASX

Amcor (NYSE: AMCR; ASX: AMC) filed the attached Form 8-K for the twelve-month period ending 30 June 2025 with the US Securities and Exchange Commission ("SEC") on Thursday 14 August 2025. A copy of the filing is attached.

Authorised for release by:

Damien Clayton  
Company Secretary

ENDS

For further information please contact:

**Investors:**

Tracey Whitehead  
Global Head of Investor  
Relations  
Amcor  
+61 408 037 590  
tracey.whitehead@amcor.com

Damien Bird  
Vice President Investor  
Relations  
Amcor  
+61 481 900 499  
damien.bird@amcor.com

Damon Wright  
Vice President Investor  
Relations  
Amcor  
+1 224 313 7141  
damon.wright@amcor.com

Dustin Stilwell  
Vice President Investor  
Relations  
Amcor  
+1 812 306 2964  
dustin.stilwell@amcor.com

**Media – Europe**

Ernesto Duran  
Head of Global  
Communications  
Amcor  
+41 78 698 69 40  
ernesto.duran@amcor.com

**Media – Australia**

James Strong  
Managing Director  
Sodali & Co  
+61 448 881 174  
james.strong@sodali.com

**Media – North America**

Julie Liedtke  
Director – Media Relations  
Amcor  
+1 847 204 2319  
julie.liedtke@amcor.com

## About Amcor

Amcor is the global leader in developing and producing responsible consumer packaging and dispensing solutions across a variety of materials for nutrition, health, beauty and wellness categories. Our global product innovation and sustainability expertise enables us to solve packaging challenges around the world every day, producing a range of flexible packaging, rigid packaging, cartons, and closures, that are more sustainable, functional and appealing for our customers and their consumers. We are guided by our purpose of elevating customers, shaping lives and protecting the future. Supported by a commitment to safety, over 75,000 people generate \$23 billion in annualized sales from operations that span over 400 locations in more than 40 countries. NYSE: AMCR; ASX: AMC

[www.amcor.com](http://www.amcor.com) | [LinkedIn](#) | [YouTube](#)

Amcor plc

Head Office / UK Establishment Address: 83 Tower Road North, Warmley, Bristol, England, BS30 8XP, United Kingdom

UK Overseas Company Number: BR020803

Registered Office: 3rd Floor, 44 Esplanade, St Helier, JE4 9WG, Jersey

Jersey Registered Company Number: 126984 | Australian Registered Body Number (ARBN): 630 385 278

For personal use only

**UNITED STATES  
SECURITIES AND EXCHANGE COMMISSION**

Washington, D.C. 20549

**FORM 8-K**

**CURRENT REPORT  
Pursuant to Section 13 or 15(d)  
of the Securities Exchange Act of 1934**

Date of Report (Date of earliest event reported): **August 14, 2025**

**AMCOR PLC**

(Exact name of registrant as specified in its charter)

**Jersey**  
(State or other jurisdiction of incorporation)

**001-38932**  
(Commission File Number)

**98-1455367**  
(IRS Employer Identification No.)

**83 Tower Road North  
Warmley, Bristol  
United Kingdom**  
(Address of principal executive offices)

**BS30 8XP**  
(Zip Code)

**+44 117 9753200**  
(Registrant's telephone number, including area code)

Check the appropriate box below if the Form 8-K filing is intended to simultaneously satisfy the filing obligation of the registrant under any of the following provisions:

- Written communications pursuant to Rule 425 under the Securities Act (17 CFR 230.425)
- Soliciting material pursuant to Rule 14a-12 under the Exchange Act (17 CFR 240.14a-12)
- Pre-commencement communications pursuant to Rule 14d-2(b) under the Exchange Act (17 CFR 240.14d-2(b))
- Pre-commencement communications pursuant to Rule 13e-4(c) under the Exchange Act (17 CFR 240.13e-4(c))

Securities registered pursuant to Section 12(b) of the Act:

Title of each class	Trading symbol(s)	Name of each exchange on which registered
Ordinary Shares, par value \$0.01 per share	AMCR	New York Stock Exchange
1.125% Guaranteed Senior Notes Due 2027	AUKF/27	New York Stock Exchange
5.450% Guaranteed Senior Notes Due 2029	AMCR/29	New York Stock Exchange
3.950% Guaranteed Senior Notes Due 2032	AMCR/32	New York Stock Exchange

Indicate by check mark whether the registrant is an emerging growth company as defined in Rule 405 of the Securities Act of 1933 (§230.405 of this chapter) or Rule 12b-2 of the Securities Exchange Act of 1934 (§240.12b-2 of this chapter).

- Emerging growth company

If an emerging growth company, indicate by check mark if the registrant has elected not to use the extended transition period for complying with any new or revised financial accounting standards provided pursuant to Section 13(a) of the Exchange Act.

---

---

**Item 2.02. Results of Operations and Financial Condition.**

On August 14, 2025, Amcor plc (the “Company”) issued a press release regarding financial results for the fourth quarter and for the fiscal year ended June 30, 2025. The press release is furnished as Exhibit 99.1 hereto. The Company is also furnishing an investor presentation relating to its fourth quarter and for the fiscal year ended June 30, 2025 (the “Presentation”), which will be used by management for presentations to investors and others. A copy of the Presentation is attached hereto as Exhibit 99.2 and incorporated into this Item 2.02 by reference. The Presentation is also available on the Company’s website at <https://www.amcor.com/investors>. The Company is not including the information contained on its website as part of, or incorporating it by reference into, this Current Report on Form 8-K.

The information in this Current Report on Form 8-K shall not be deemed “filed” for purposes of Section 18 of the Securities Exchange Act of 1934, as amended (the “Exchange Act”), or incorporated by reference in any filing under the Securities Act of 1933, as amended (the “Securities Act”), or the Exchange Act, except as shall be expressly set forth by specific reference in such a filing.

**Item 9.01. Financial Statements and Exhibits.****Exhibit Index**

<b>Exhibit No.</b>	<b>Description</b>
99.1	<a href="#">Fourth Quarter and Fiscal Year 2025, Earnings Press Release</a>
99.2	<a href="#">Fourth Quarter and Fiscal Year 2025, Earnings Investor Presentation</a>
104	Cover Page Interactive Data File. The cover page XBRL tags are embedded within the inline XBRL document

For personal use only

---

---

## Cautionary Statement Regarding Forward-Looking Statements

This Current Report on Form 8-K (including the Exhibits hereto) contains certain statements that are “forward-looking statements” within the meaning of Section 27A of the Securities Act and Section 21E of the Exchange Act. The Company has identified some of these forward-looking statements with words like “believe,” “target,” “project,” “may,” “could,” “would,” “approximately,” “possible,” “will,” “should,” “expect,” “intend,” “plan,” “anticipate,” “commit,” “estimate,” “potential,” “ambitions,” “outlook” or “continue,” the negative of these words, other terms of similar meaning or the use of future dates. Such statements are based on the current expectations of the management of the Company, and are qualified by the inherent risks and uncertainties surrounding future expectations generally. Actual results could differ materially from those currently anticipated due to a number of risks and uncertainties. None of the Company or any of its respective directors, executive officers or advisors, provide any representation, assurance or guarantee that the occurrence of the events expressed or implied in any forward-looking statements will actually occur. Risks and uncertainties that could cause results to differ from expectations include, but are not limited to, those discussed in the Company’s disclosures described under Part I, “Item 1A - Risk Factors” in the Company’s Annual Report on Form 10-K for the fiscal year ended June 30, 2024 and any subsequent quarterly reports on Form 10-Q. Forward looking statements included herein are made only as of the date hereof and the Company does not undertake any obligation to update any forward-looking statements, or any other information in this Current Report on Form 8-K, as a result of new information, future developments or otherwise, or to correct any inaccuracies or omissions in them which become apparent. All forward-looking statements in this Current Report on Form 8-K are qualified in their entirety by this cautionary statement.

For personal use only

---

---

SIGNATURES

Pursuant to the requirements of the Securities Exchange Act of 1934, as amended, the registrant has duly caused this report to be signed on its behalf by the undersigned hereunto duly authorized.

**AMCOR PLC**

Date August 14, 2025

/s/ Damien Clayton

---

Name: Damien Clayton  
Title: Company Secretary

For personal use only

---

---

## Amcor reports fiscal 2025 Q4 results. Expects strong earnings growth in fiscal 2026.

### Fourth Quarter ending June 30, 2025 highlights:

- All-stock acquisition of Berry Global Group, Inc. ("Berry Global") closed on April 30, 2025;
- Identified Amcor's core portfolio and optimization actions;
- Net sales \$5,082 million, up 43% excluding currency impact;
- GAAP Net Income (\$39) million including acquisition related costs; and
- Adjusted EBITDA \$789 million up 43% and adjusted EBIT \$611 million up 34% excluding currency impact.

### Fiscal Year ending June 30, 2025 highlights:

- Net sales \$15,009 million, up 11% excluding currency impact;
- GAAP Net Income \$511 million and GAAP diluted EPS 32.0 cps including acquisition related costs;
- Adjusted EBITDA \$2,186 million, up 13%, and adjusted EBIT \$1,723 million, up 12% excluding currency impact;
- Adjusted EPS 71.2 cps, up 3% excluding currency impact; and
- Adjusted Free Cash Flow \$926 million, and annual dividend increased to 51 US cents per share.

### Fiscal 2026 outlook:

- Adjusted EPS of 80-83 cps representing 12-17% constant currency growth; Free Cash Flow of \$1.8-1.9 billion.

### Milestone quarter leaves Amcor positioned to deliver strong earnings and free cash flow growth in FY26

Amcor CEO Peter Konieczny said, "This quarter marks a significant milestone for Amcor. The acquisition of Berry Global transforms our ability to create significant value for our customers and shareholders. This is clearly reflected in our expectation to deliver strong adjusted EPS growth of 12-17% and a significant increase in Free Cash Flow to \$1.8 to \$1.9 billion in fiscal 2026.

Feedback from our customers has been positive and has already resulted in business wins directly linked to this combination. Integration efforts began on Day 1 and I am proud of the excellent progress our teams have made. We are tracking well against our synergy targets and our delivery run rate is building as expected. In addition, through our strategic portfolio review, we have identified Amcor's \$20 billion core portfolio of consumer packaging and dispensing solutions for nutrition and health along with optimization actions designed to further sharpen our focus on attractive categories and drive faster growth.

Our efforts share one common objective: to create an even stronger business, that is the global packaging partner of choice for our customers, and delivers higher levels of consistent organic growth and value for our shareholders."

### Key Financials<sup>(1)(2)(3)</sup>

GAAP results	Three Months Ended June 30,		Twelve Months Ended June 30,	
	2024 \$ million	2025 \$ million	2024 \$ million	2025 \$ million
Net sales	3,535	5,082	13,640	15,009
Net income	257	(39)	730	511
EPS (diluted US cents)	17.8	(1.9)	50.5	32.0

Adjusted non-GAAP results	Three Months Ended June 30,		Constant currency $\Delta\%$	Twelve Months Ended June 30,		Constant currency $\Delta\%$
	2024 \$ million	2025 \$ million		2024 \$ million	2025 \$ million	
Net sales	3,535	5,082	43	13,640	15,009	11
EBITDA	550	789	43	1,962	2,186	13
EBIT	454	611	34	1,560	1,723	12
Net income	305	408	34	1,015	1,136	13
EPS (diluted US cents) <sup>(4)</sup>	21.1	20.0	(5)	70.2	71.2	3
Free Cash Flow	837	943		952	926	

All amounts referenced throughout this document are in US dollars unless otherwise indicated and numbers may not add up to the totals provided due to rounding. Further details related to combined volume commentary throughout this document can be found under "Presentation of combined volume performance."

(1) Adjusted non-GAAP results exclude items not considered representative of ongoing operations. Constant currency  $\Delta\%$  excludes movements in foreign exchange rates. Further details on non-GAAP measures and reconciliations to GAAP measures can be found under "Presentation of non-GAAP information" in this release.

(2) Due to closing of the combination between Amcor and Berry Global on April 30, 2025, unless otherwise specified, all results within this document for the three months ended 30 June 2025 do not include the results for the legacy Berry Global business for the month of April 2025. Results for the twelve months ended 30 June 2025 do not include results for the legacy Berry Global business for the months of July 2024 to April 2025.

(3) Unless otherwise specified, all results within this document for the three months ended 30 June 2024 and the twelve months ended June 30, 2024 reflect the historical results of the Amcor plc group which is considered the accounting acquirer in the combination between Amcor plc and Berry Global, which closed on April 30, 2025.

(4) For fiscal 2025, the sum of quarters do not equal the total year amount due to the impact of changes in average quarterly shares outstanding.

## Berry Global acquisition

On April 30, 2025, the all-stock acquisition of Berry Global was completed at a fixed exchange ratio of 7.25 Amcor ordinary shares for each Berry share.

This transformational acquisition establishes Amcor as the global leader in consumer packaging and dispensing solutions for nutrition and health, with the unique material science and innovation capabilities to meet customers' and consumers' sustainability aspirations. With multiple new growth opportunities and \$650 million of identified synergies through fiscal 2028, Amcor is well placed to deliver significant near- and long-term value for customers and shareholders.

### Segment reporting

The Global Flexible Packaging Solutions segment includes Amcor's legacy Flexible Packaging business and the newly acquired Berry Global Flexibles business.

The Global Rigid Packaging Solutions segment includes Amcor's legacy Rigid Packaging business and the newly acquired Berry Global Consumer Packaging International and Consumer Packaging North America businesses.

### Integration and synergies

Amcor believes the company is well placed to achieve the previously announced total synergy benefits of \$650 million (pre-tax) by the end of the 2028 fiscal year. Integration is proceeding in line with expectations and Amcor's teams are on track to deliver \$260 million of synergy benefits (pre-tax) in the 2026 fiscal year which represents 12% accretion as a direct result of the acquisition. Given the April 30, 2025 transaction closing date, synergies delivered in the final two months of fiscal 2025 were not material.

### Portfolio review identifying Amcor's core portfolio and strategic optimization actions

As previously communicated, the acquisition of Berry Global created a unique opportunity for the company to review its newly combined portfolio. Through this review, the company has identified its \$20 billion core portfolio of consumer packaging and dispensing solutions for nutrition and health. This core portfolio is made up of leading positions in large, resilient, and growing health, beauty and wellness, nutrition and specialty end markets, where Amcor has global supply chain flexibility, an expanded multi-format product offering of innovative, high value solutions and significant room to grow.

The Company also identified businesses with combined annual sales of approximately \$2.5 billion that are less aligned with the core portfolio, including the \$1.5 billion North America Beverage business and smaller businesses with combined annual sales of approximately \$1 billion. Amcor is exploring alternatives to maximize value for each business, which may include restructuring, partnership and joint venture ownership models, cash sale or a combination thereof. The company believes these optimization actions will enhance focus on these businesses and ensure the core portfolio, drive higher levels of more consistent organic growth and create significant value for shareholders.

The Company has initiated actions and while there is no definitive timeline, some progress is expected in fiscal 2026. The Company will remain disciplined and focused on maximizing value through the process.

## Shareholder returns

The Amcor Board of Directors today declared a quarterly cash dividend of 12.75 cents per share (compared with 12.5 cents per share in the same quarter last year). Combined with the last three quarterly dividends, this increases the annual dividend for fiscal 2025 to 51.0 cents per share. The dividend will be paid in US dollars to holders of Amcor's ordinary shares trading on the NYSE. Holders of CDIs trading on the ASX will receive an unfranked dividend of 19.59 Australian cents per share, which reflects the quarterly dividend of 12.75 cents per share converted at an AUD:USD average exchange rate of 0.6509 over the five trading days ended August 12, 2025.

The ex-dividend date will be September 4, 2025 for holders of CDIs trading on the ASX and September 5, 2025 for holders of shares trading on the NYSE. For all shareholders, the record date will be September 5, 2025 and the payment date will be September 25, 2025.

# Financial results - Segment information

## Three months ended June 30, 2025

Adjusted non-GAAP results	Three Months Ended June 30, 2024			Three Months Ended June 30, 2025		
	Net sales \$ million	EBIT \$ million	EBIT / Sales %	Net sales \$ million	EBIT \$ million	EBIT / Sales %
Global Flexible Packaging Solutions	2,686	403	15.0	3,205	450	14.1
Global Rigid Packaging Solutions	849	75	8.8	1,877	204	10.9
Other <sup>(1)</sup>	—	(24)		—	(43)	
<b>Total Amcor</b>	<b>3,535</b>	<b>454</b>	<b>12.8</b>	<b>5,082</b>	<b>611</b>	<b>12.0</b>

(1) Represents corporate expenses.

Net sales of \$5,082 million were 44% higher than last year on a reported basis, including a favorable impact of approximately 1% related to movements in foreign exchange rates.

On a constant currency basis, net sales were 43% higher than last year, including approximately \$1.5 billion of acquired sales net of divestments which represents growth of approximately 43%. The remaining year over year variation mainly reflects a favorable impact of approximately 1% related to the pass through of higher raw material costs. Price/mix had a favorable impact of approximately 1% driven by higher relative volume growth in high value categories, which partly offset an unfavorable volume impact of 1.7%.

Year over year volume performance was similar for both legacy businesses. On a combined basis (includes volume performance for the three months ended June 30, 2025 for the legacy Amcor business combined with volume performance for the period May 1, 2025 to 30 June, 2025 for the legacy Berry business) the Company estimates that volumes were approximately 1.7% lower than the prior year, and approximately 1.4% lower than the prior year excluding North America beverage.

Adjusted EBIT of \$611 million was 34% higher than last year on a constant currency basis, including approximately \$200 million of acquired EBIT net of divestments which represents growth of approximately 44%. The remaining year over year variation mainly reflects lower volumes, higher costs in North America beverage business and increased corporate expenses in line with expectations.

## Twelve months ended June 30, 2025

Adjusted non-GAAP results	Twelve Months Ended June 30, 2024				Twelve Months Ended June 30, 2025			
	Net sales \$ million	EBIT \$ million	EBIT / Sales %	EBIT / Average funds employed % <sup>(1)</sup>	Net sales \$ million	EBIT \$ million	EBIT / Sales %	EBIT / Average funds employed % <sup>(1)</sup>
Global Flexible Packaging Solutions	10,332	1,395	13.5		10,872	1,458	13.4	
Global Rigid Packaging Solutions	3,308	259	7.8		4,137	375	9.1	
Other <sup>(2)</sup>	—	(94)			—	(110)		
<b>Total Amcor</b>	<b>13,640</b>	<b>1,560</b>	<b>11.4</b>	<b>14.9</b>	<b>15,009</b>	<b>1,723</b>	<b>11.5</b>	<b>12.1</b>

(1) Return on average funds employed includes shareholders' equity and net debt, calculated using a four quarter average and last twelve months adjusted EBIT.

(2) Represents corporate expenses.

Net sales of \$15,009 million were 10% higher than last year on a reported basis, including an unfavorable impact of approximately 1% related to movements in foreign exchange rates.

On a constant currency basis, net sales were 11% higher than last year, including approximately \$1.5 billion of acquired sales, net of divestments which represents growth of approximately 10%. The remaining year over year variation mainly reflects a favorable impact of approximately 1% related to the pass through of higher raw material costs. Volumes were up approximately 1% compared with the prior year and price/mix had an unfavorable impact of approximately 1% primarily due to lower volumes in high value healthcare categories in the first half of the year.

Adjusted EBIT of \$1,723 million was 12% higher than last year on a constant currency basis including approximately \$195 million of acquired EBIT net of divestments, which represents growth of approximately 13%. The remaining year over year variation mainly reflects an unfavorable price/mix impact on earnings, partly offset by benefits from strong cost performance and higher volumes.

## Global Flexible Packaging Solutions segment

<i>June 2025 quarter</i>	Three Months Ended June 30,		Reported Δ%	Constant currency Δ%
	2024 \$ million	2025 \$ million		
Net sales	2,686	3,205	19	18
Adjusted EBIT	403	450	12	11
Adjusted EBIT / Sales %	15.0	14.1		

Net sales of \$3,205 million were 19% higher than last year on a reported basis, including a favorable impact of approximately 1% related to movements in foreign exchange rates.

On a constant currency basis, net sales were 18% higher than last year, reflecting approximately \$420 million of acquired sales net of divestments which represents growth of approximately 16%. The remaining year over year variation mainly reflects a favorable impact of approximately 1% related to the pass through of higher raw material costs, a favorable price/mix impact of approximately 2%, reflecting higher relative volume growth in high value categories, and an unfavorable volume impact of approximately 1%.

On a combined basis (includes volume performance for the three months ended June 30, 2025 for the legacy Amcor business combined with volume performance for the period May 1, 2025 to 30 June, 2025 for the legacy Berry business) the Company estimates that overall volumes for the Global Flexible Packaging Solutions segment were approximately 1.5% lower than the prior year. In North America, volumes were down in the low single digit range. Volumes were higher across focus categories including healthcare, protein (meat and dairy), and liquids. This was offset by lower volumes in other categories including home & personal care, confectionary and unconverted films. Across the balance of the portfolio, volumes were broadly in line with the prior year. In Europe, volumes were lower with growth in pet care, ready meals, medical and dairy, offset by declines in coffee, snacks and confectionary and beauty and wellness. Volumes grew in the low single digit range across emerging markets.

Adjusted EBIT of \$450 million was 11% higher than last year on a constant currency basis, reflecting approximately \$50 million of acquired EBIT, net of divestments which represents growth of approximately 12%. The remaining year over year variation mainly reflects lower volumes and an unfavorable earnings impacts from price/mix, partly offset by favorable cost performance.

<i>Fiscal 2025</i>	Twelve Months Ended June 30,		Reported Δ%	Constant currency Δ%
	2024 \$ million	2025 \$ million		
Net sales	10,332	10,872	5	6
Adjusted EBIT	1,395	1,458	5	5
Adjusted EBIT / Sales %	13.5	13.4		

Net sales of \$10,872 million were 5% higher than last year on a reported basis, including an unfavorable impact of approximately 1% related to movements in foreign exchange rates.

On a constant currency basis, net sales were 6% higher than last year, including approximately \$410 million of acquired sales net of divestments which represents growth of approximately 4%. The remaining variation mainly reflects a favorable impact of approximately 1% related to the pass through of higher raw material costs, a favorable volume impact of approximately 2% with growth delivered across all key regions, partly offset by an unfavorable price/mix impact of approximately 1% primarily due to lower volumes in high value healthcare categories in the first half of the year.

Adjusted EBIT of \$1,458 million was 5% higher than last year on a constant currency basis, including approximately \$50 million of acquired EBIT net of divestments, which represents growth of approximately 3%. The remaining year over year variation mainly reflects benefits from higher volumes and strong cost performance partly offset by unfavorable earnings impacts from price/mix.

For personal use only

## Global Rigid Packaging Solutions segment

<i>June 2025 quarter</i>	Three Months Ended June 30,		Reported Δ%	Constant currency Δ%
	2024 \$ million	2025 \$ million		
Net sales	849	1,877	121	121
Adjusted EBIT	75	204	173	173
Adjusted EBIT / Sales %	8.8	10.9		

Net sales of \$1,877 million were 121% higher than last year on a reported and constant currency basis, including approximately \$1.1 billion of acquired sales net of divestments which represents growth of approximately 129%. The remaining variation mainly reflects an unfavorable volume impact of approximately 4% and an unfavorable price/mix impact of approximately 4%. Movements in foreign exchange rates and the pass through of higher raw material costs had no material impact on sales for the quarter.

On a combined basis (includes volume performance for the three months ended June 30, 2025 for the legacy Amcor business combined with volume performance for the period May 1, 2025 to 30 June, 2025 for the legacy Berry business) the Company estimates that overall volumes for the Global Rigid Packaging Solutions segment were approximately 2% lower than the prior year and approximately 1% lower than the prior year excluding North America beverage. In North America, volumes declined at low single digit rates excluding North America beverage. Volumes were higher across healthcare, beauty and wellness and foodservice categories. This was more than offset by volume declines in food and specialty end markets. Across the balance of the portfolio, volumes in Europe were in line with the prior year with growth in food and healthcare end markets offset by lower volumes in beauty and wellness categories. Volumes were modestly higher across emerging markets.

Adjusted EBIT of \$204 million was 173% higher than last year on a constant currency basis, including approximately \$150 million of acquired EBIT net of divestments which represents growth of approximately 203%. The remaining year over year variation mainly reflects lower volumes and higher costs in the North America Beverage business driven by operating challenges at high volume sites.

<i>Fiscal 2025</i>	Twelve Months Ended June 30,		Reported Δ%	Constant currency Δ%
	2024 \$ million	2025 \$ million		
Net sales	3,308	4,137	25	26
Adjusted EBIT	259	375	45	47
Adjusted EBIT / Sales %	7.8	9.1		

Net sales of \$4,137 million were 25% higher than last year on a reported basis, including an unfavorable impact of 1% related to movements in foreign exchange rates.

On a constant currency basis, net sales were 26% higher than last year, reflecting approximately \$1.0 billion of acquired sales net of divestments which represents growth of approximately 31%. The remaining variation mainly reflects an unfavorable impact of approximately 1% related to the pass through of lower raw material costs, 2% lower volumes and an unfavorable price/mix impact of approximately 2%.

Adjusted EBIT of \$375 million was approximately 47% higher than last year on a constant currency basis, reflecting approximately \$150 million of acquired EBIT net of divestments, which represents growth of approximately 57%. The remaining year over year variation mainly reflects lower volumes and higher costs in the North American beverage business in the second half of the year.

### Net interest and income tax expense

For the year ended June 30, 2025, GAAP net interest expense of \$347 million compares with \$310 million last year. Adjusted net interest expense of \$332 million was \$22 million higher than last year as a result of increased acquisition related net debt. GAAP income tax expense for the year ended June 20, 2025 was \$135 million compared with \$163 million last year. Adjusted tax expense was \$248 million compared with \$225 million last year. Adjusted tax expense for the year ended June 30, 2025 represents an effective tax rate of 17.8%, in line with the prior year.

### Adjusted Free Cash Flow and Net Debt

For the year ended June 30, 2025, adjusted free cash inflow of \$926 million was in-line with the Company's guidance range and compares with \$952 million last year. Net debt was \$13,271 million at June 30, 2025, including acquisition related Berry Global debt of approximately \$7.4 billion.

## Fiscal 2026 Guidance

For the twelve month period ending June 30, 2026, the Company expects:

- Adjusted EPS of approximately 80 to 83 cents per share, which represents constant currency growth of 12% to 17% compared with 71.2 cents per share in fiscal 2025. This includes pre-tax synergy benefits related to the Berry Global acquisition of approximately \$260 million.
- Free Cash Flow of approximately \$1.8 billion to \$1.9 billion, which is after deducting approximately \$220 million of net cash integration and transaction costs related to the Berry Global acquisition.

Other guidance considerations include:

- Capital expenditure between \$850 to \$900 million;
- Net interest expense of approximately \$570 to \$600 million; and
- An effective tax rate between 19% and 21%.

Amcor's guidance for fiscal 2026 reflects a full 12 months ownership of the Berry Global business and does not take into account the impact of potential portfolio optimization actions which may be completed through the year.

Amcor's guidance contemplates a range of factors which create a degree of uncertainty and complexity when estimating future financial results. Further information can be found under 'Cautionary Statements Regarding Forward-Looking Statements' in this release. Reconciliations of the fiscal 2026 projected non-GAAP measures are not included herein because the individual components are not known with certainty as individual financial statements for fiscal 2026 have not been completed.

### Conference Call

Amcor is hosting a conference call with investors and analysts to discuss these results on Thursday August 14, 2025 at 8:00am US Eastern Daylight Time / 10:00pm Australian Eastern Standard Time. Investors are invited to listen to a live webcast of the conference call at our website, [www.amcor.com](http://www.amcor.com), in the "Investors" section.

Those wishing to access the call should use the following toll-free numbers, with the Conference ID : 4169471

- USA: 800 715 9871 (toll free); 646 307 1963 (local)
- Australia: 1800 519 630 (toll free), 02 9133 7103 (local)
- United Kingdom: 0800 358 0970 (toll free), 020 3433 3846 (local)
- Singapore: 65 3159 5133 (local)
- Hong Kong: 852 3002 3410 (local)

From all other countries, the call can be accessed by dialing +1 646 307 1963 (toll).

A replay of the webcast will also be available in the "Investors" section at [www.amcor.com](http://www.amcor.com) following the call.

### About Amcor

Amcor is the global leader in developing and producing responsible consumer packaging and dispensing solutions across a variety of materials for nutrition, health, beauty and wellness categories. Our global product innovation and sustainability expertise enables us to solve packaging challenges around the world every day, producing a range of flexible packaging, rigid packaging, cartons and closures that are more sustainable, functional and appealing for our customers and their consumers. We are guided by our purpose of elevating customers, shaping lives and protecting the future. Supported by a commitment to safety, over 75,000 people generate \$23 billion in annualized sales from operations that span over 400 locations in more than 40 countries. NYSE: AMCR; ASX: AMC

[www.amcor.com](http://www.amcor.com) | [LinkedIn](#) | [YouTube](#)

## Contact Information

### Investors

#### Tracey Whitehead

Global Head of Investor Relations  
+61 408 037 590  
tracey.whitehead@amcor.com

#### Damien Bird

Vice President Investor Relations  
Asia Pacific  
+61 481 900 499  
damien.bird@amcor.com

#### Damon Wright

Vice President Investor Relations  
North America  
+1 224 313 7141  
damon.wright@amcor.com

#### Dustin Stilwell

Vice President Investor Relations  
North America  
+1 812 306 2964  
dustin.stilwell@amcor.com

### Media - Australia

#### James Strong

Managing Director  
Sodali & Co  
+61 448 881 174  
james.strong@sodali.com

### Media - Europe

#### Ernesto Duran

Head of Global Communications  
Amcor  
+41 78 698 69 40  
ernesto.duran@amcor.com

### Media - North America

#### Julie Liedtke

Director, Media Relations  
Amcor  
+1 847 204 2319  
julie.liedtke@amcor.com

Amcor plc UK Establishment Address: 83 Tower Road North, Warmley, Bristol, England, BS30 8XP, United Kingdom  
UK Overseas Company Number: BR020803  
Registered Office: 3rd Floor, 44 Esplanade, St Helier, JE4 9WG, Jersey  
Jersey Registered Company Number: 126984, Australian Registered Body Number (ARBN): 630 385 278

For personal use only

## U.S. GAAP Condensed Consolidated Statements of Income (Unaudited)

(\$ million, except per share amounts)	Three Months Ended June 30,		Twelve Months Ended June 30,	
	2024	2025	2024	2025
Net sales	3,535	5,082	13,640	15,009
Cost of sales	(2,781)	(4,187)	(10,928)	(12,175)
Gross profit	754	895	2,712	2,834
Selling, general, and administrative expenses	(288)	(408)	(1,093)	(1,205)
Amortization of acquired intangible assets	(41)	(130)	(167)	(246)
Research and development expenses	(26)	(38)	(106)	(120)
Restructuring, transaction and integration expenses, net	(15)	(236)	(97)	(307)
Other income/(expense), net	11	4	(35)	53
Operating income	395	87	1,214	1,009
Interest expense, net	(78)	(125)	(310)	(347)
Other non-operating income/(loss), net	1	(9)	3	(12)
Income/loss before income taxes and equity in income/(loss) of affiliated companies	318	(47)	907	650
Income tax expense	(56)	6	(163)	(135)
Equity in income/(loss) of affiliated companies, net of tax	(1)	2	(4)	3
Net income/loss	261	(39)	740	518
Net income attributable to non-controlling interests	(4)	—	(10)	(7)
Net income/loss attributable to Amcor plc	257	(39)	730	511
USD:EUR average FX rate	0.9287	0.8825	0.9245	0.9203
Basic earnings per share attributable to Amcor	0.178	(0.019)	0.505	0.321
Diluted earnings per share attributable to Amcor	0.178	(0.019)	0.505	0.320
Weighted average number of shares outstanding – Basic	1,439	2,035	1,439	1,589
Weighted average number of shares outstanding – Diluted	1,443	2,040	1,441	1,593

For personal use only

## U.S. GAAP Condensed Consolidated Statements of Cash Flows (Unaudited)

(\$ million)	Twelve Months Ended June 30,	
	2024	2025
Net income	740	518
Depreciation, amortization, and impairment	595	722
Net gain on disposal of businesses and investments	—	(8)
Changes in operating assets and liabilities, excluding effect of acquisitions, divestitures, and currency	(120)	(53)
Other non-cash items	106	211
Net cash provided by operating activities	1,321	1,390
Purchase of property, plant, and equipment and other intangible assets	(492)	(580)
Proceeds from sales of property, plant, and equipment and other intangible assets	39	18
Business acquisitions and Investments in affiliated companies, and other	(23)	(1,653)
Proceeds from divestitures	—	113
Net debt proceeds/(repayments)	(43)	1,876
Dividends paid	(722)	(845)
Share buy-back/cancellations	(30)	—
Purchase of treasury shares, proceeds from exercise of options and tax withholdings for share-based incentive plans	(51)	(107)
Other, including effects of exchange rate on cash and cash equivalents	(100)	27
Net increase/decrease in cash and cash equivalents	(101)	239
Cash and cash equivalents at the beginning of the year	689	588
Cash and cash equivalents at the end of the year	588	827

## U.S. GAAP Condensed Consolidated Balance Sheets (Unaudited)

(\$ million)	June 30, 2024	June 30, 2025
Cash and cash equivalents	588	827
Trade receivables, net	1,846	3,426
Inventories, net	2,031	3,471
Property, plant and equipment, net	3,763	8,202
Goodwill and other intangible assets, net	6,736	18,679
Other assets	1,560	2,461
Total assets	16,524	37,066
Trade payables	2,580	3,490
Short-term debt and current portion of long-term debt	96	257
Long-term debt, less current portion	6,603	13,841
Accruals and other liabilities	3,292	7,738
Shareholders' equity	3,953	11,740
Total liabilities and shareholders' equity	16,524	37,066

## Components of Fiscal 2025 Net Sales growth

(\$ million)	Three Months Ended June 30			Twelve Months Ended June 30		
	Global Flexible Packaging Solutions	Global Rigid Packaging Solutions	Total	Global Flexible Packaging Solutions	Global Rigid Packaging Solutions	Total
Net sales fiscal year 2025	3,205	1,877	5,082	10,872	4,137	15,009
Net sales fiscal year 2024	2,686	849	3,535	10,332	3,308	13,640
<b>Reported Growth %</b>	<b>19</b>	<b>121</b>	<b>44</b>	<b>5</b>	<b>25</b>	<b>10</b>
FX %	1	—	1	(1)	(1)	(1)
<b>Constant Currency Growth %</b>	<b>18</b>	<b>121</b>	<b>43</b>	<b>6</b>	<b>26</b>	<b>11</b>
Raw Material Pass Through %	1	—	1	1	(1)	1
Items affecting comparability %	16	129	43	4	31	10
<b>Organic Growth</b>	<b>1</b>	<b>(8)</b>	<b>(1)</b>	<b>1</b>	<b>(4)</b>	<b>—</b>
Volume %	(1)	(4)	(2)	2	(2)	1
Price/Mix %	2	(4)	1	(1)	(2)	(1)

For personal use only

## Reconciliation of Non-GAAP Measures

Reconciliation of adjusted Earnings before interest, tax, depreciation and amortization (EBITDA), Earnings before interest and tax (EBIT), Net income, Earnings per share (EPS) and Free Cash Flow

(\$ million)	Three Months Ended June 30, 2024				Three Months Ended June 30, 2025			
	EBITDA	EBIT	Net Income	EPS (Diluted US cents) <sup>(1)</sup>	EBITDA	EBIT	Net Income	EPS (Diluted US cents) <sup>(1)</sup>
<b>Net income attributable to Amcor</b>	<b>257</b>	<b>257</b>	<b>257</b>	<b>17.8</b>	<b>(39)</b>	<b>(39)</b>	<b>(39)</b>	<b>(1.9)</b>
Net income attributable to non-controlling interests	4	4			—	—		
Tax expense	56	56			(6)	(6)		
Interest expense, net	78	78			125	125		
Depreciation and amortization	136				309			
<b>EBITDA, EBIT, Net income and EPS</b>	<b>531</b>	<b>395</b>	<b>257</b>	<b>17.8</b>	<b>389</b>	<b>80</b>	<b>(39)</b>	<b>(1.9)</b>
Impact of highly inflationary accounting	(2)	(2)	(2)	(0.1)	8	8	8	0.4
Restructuring and other related activities, net <sup>(2)</sup>	15	15	15	1.0	29	29	29	1.4
Berry Transaction & Integration	—	—	—	—	166	166	176	8.6
Merger related compensation	—	—	—	—	41	41	41	2.0
Inventory step-up amortization <sup>(3)</sup>	—	—	—	—	133	133	133	6.5
Other	5	5	5	0.3	24	24	24	1.2
Amortization of acquired intangibles <sup>(4)</sup>		41	41	2.9		130	130	6.4
Tax effect of above items			(11)	(0.8)			(94)	(4.6)
<b>Adjusted EBITDA, EBIT, Net income, and EPS</b>	<b>550</b>	<b>454</b>	<b>305</b>	<b>21.1</b>	<b>789</b>	<b>611</b>	<b>408</b>	<b>20.0</b>
<b>Reconciliation of adjusted growth to constant currency growth</b>								
% growth - Adjusted EBITDA, EBIT, Net income and EPS					44	35	34	(5)
% currency impact					(1)	—	—	—
<b>% constant currency growth</b>					<b>43</b>	<b>34</b>	<b>34</b>	<b>(5)</b>
% constant currency made up of:								
% items affecting comparability <sup>(5)</sup>					51	44	40	1
% from all other sources					(8)	(10)	(7)	(6)
<b>Adjusted EBITDA</b>	<b>550</b>				<b>789</b>			
Interest paid, net	(99)				(123)			
Income tax paid	(90)				(138)			
Purchase of property, plant and equipment and other intangible assets	(134)				(220)			
Proceeds from sales of property, plant and equipment and other intangible assets	27				9			
Movement in working capital	610				744			
Other	(27)				(118)			
<b>Adjusted Free Cash Flow</b>	<b>837</b>				<b>943</b>			

(1) Calculation of diluted EPS for the three months ended June 30, 2024 excludes net income attributable to shares to be repurchased under forward contracts of \$1 million. For fiscal 2025, the sum of quarters do not equal the total year amount due to the impact of changes in average quarterly shares outstanding.

(2) Fiscal 2025 primarily includes restructuring and other costs related to the integration of the acquired Berry business, and costs attributable to group wide initiatives to partly offset divested earnings from the Russian business.

(3) Additional amortization incurred on inventories in connection with the Berry acquisition

(4) Amortization of acquired intangible assets from business combinations.

(5) Reflects the impact of acquired, disposed, and ceased operations.

(\$ million)	Twelve Months Ended June 30, 2024				Twelve Months Ended June 30, 2025			
	EBITDA	EBIT	Net Income	EPS (Diluted US cents) <sup>(1)</sup>	EBITDA	EBIT	Net Income	EPS (Diluted US cents) <sup>(1)</sup>
<b>Net income attributable to Amcor</b>	<b>730</b>	<b>730</b>	<b>730</b>	<b>50.5</b>	<b>511</b>	<b>511</b>	<b>511</b>	<b>32.0</b>
Net income attributable to non-controlling interests	10	10			7	7		
Tax expense	163	163			135	135		
Interest expense, net	310	310			347	347		
Depreciation and amortization	569				710			
<b>EBITDA, EBIT, Net income and EPS</b>	<b>1,782</b>	<b>1,213</b>	<b>730</b>	<b>50.5</b>	<b>1,710</b>	<b>1,000</b>	<b>511</b>	<b>32.0</b>
Impact of highly inflationary accounting	53	53	53	3.7	16	16	16	1.0
Restructuring and other related activities, net <sup>(2)</sup>	97	97	97	6.7	64	64	64	4.0
Berry Transaction & Integration	—	—	—	—	202	202	217	13.6
Merger related compensation	—	—	—	—	41	41	41	2.6
CEO Transition costs	8	8	8	0.6	—	—	—	—
Inventory step-up amortization <sup>(3)</sup>	—	—	—	—	133	133	133	8.3
Other	22	22	22	1.5	21	21	21	1.3
Amortization of acquired intangibles <sup>(4)</sup>		167	167	11.6		246	246	15.4
Tax effect of above items			(62)	(4.4)			(113)	(7.0)
<b>Adjusted EBITDA, EBIT, Net income and EPS</b>	<b>1,962</b>	<b>1,560</b>	<b>1,015</b>	<b>70.2</b>	<b>2,186</b>	<b>1,723</b>	<b>1,136</b>	<b>71.2</b>
<b>Reconciliation of adjusted growth to constant currency growth</b>								
% growth - Adjusted EBITDA, EBIT, Net income, and EPS					11	11	12	1
% currency impact					1	1	1	1
<b>% constant currency growth</b>					<b>13</b>	<b>12</b>	<b>13</b>	<b>3</b>
% constant currency made up of:								
% items affecting comparability <sup>(5)</sup>					14	13	12	1
% from all other sources					(1)	(1)	2	2
<b>Adjusted EBITDA</b>	<b>1,962</b>				<b>2,186</b>			
Interest paid, net	(295)				(290)			
Income tax paid	(253)				(286)			
Purchase of property, plant and equipment and other intangible assets	(492)				(580)			
Proceeds from sales of property, plant and equipment and other intangible assets	39				18			
Movement in working capital	(15)				34			
Other	6				(156)			
<b>Adjusted Free Cash Flow</b>	<b>952</b>				<b>926</b>			

(1) Calculation of diluted EPS for the twelve months ended June 30, 2025 excludes net income attributable to shares to be repurchased under forward contracts of \$1 million. Calculation of diluted EPS for the twelve months ended June 30, 2024 excludes net income attributable to shares to be repurchased under forward contracts of \$3 million. For fiscal 2025, the sum of quarters do not equal the total year amount due to the impact of changes in average quarterly shares outstanding.

(2) Fiscal 2025 primarily includes restructuring and other costs related to the integration of the acquired Berry business, and costs attributable to group wide initiatives to partly offset divested earnings from the Russian business.

(3) Additional amortization incurred on inventories in connection with the Berry acquisition

(4) Amortization of acquired intangible assets from business combinations.

(5) Reflects the impact of acquired, disposed, and ceased operations.

## Reconciliation of adjusted EBIT by reporting segment

(\$ million)	Three Months Ended June 30, 2024				Three Months Ended June 30, 2025			
	Global Flexible Packaging Solutions	Global Rigid Packaging Solutions	Other	Total	Global Flexible Packaging Solutions	Global Rigid Packaging Solutions	Other	Total
<b>Net income attributable to Amcor</b>				<b>257</b>				<b>(39)</b>
Net income attributable to non-controlling interests				4				—
Tax expense				56				(6)
Interest expense, net				78				125
<b>EBIT</b>	<b>351</b>	<b>73</b>	<b>(29)</b>	<b>395</b>	<b>308</b>	<b>8</b>	<b>(236)</b>	<b>80</b>
Impact of highly inflationary accounting	—	(2)	—	(2)	5	3	—	8
Restructuring and other related activities, net <sup>(1)</sup>	11	4	—	15	29	—	—	29
Berry Transaction & Integration	—	—	—	—	18	10	138	166
Merger related compensation	—	—	—	—	—	—	41	41
Inventory step-up amortization <sup>(2)</sup>	—	—	—	—	27	106	—	133
Other	—	—	5	5	2	11	11	24
Amortization of acquired intangibles <sup>(3)</sup>	41	—	—	41	62	66	2	130
<b>Adjusted EBIT</b>	<b>403</b>	<b>75</b>	<b>(24)</b>	<b>454</b>	<b>450</b>	<b>204</b>	<b>(43)</b>	<b>611</b>
<b>Adjusted EBIT / sales %</b>	<b>15.0 %</b>	<b>8.8 %</b>		<b>12.8 %</b>	<b>14.1 %</b>	<b>10.9 %</b>		<b>12.0 %</b>
<b>Reconciliation of adjusted growth to constant currency growth</b>								
% growth - Adjusted EBIT					12	173	—	35
% currency impact					(1)	—	—	—
<b>% constant currency</b>					<b>11</b>	<b>173</b>	<b>—</b>	<b>34</b>
% constant currency made up of:								
% items affecting comparability <sup>(4)</sup>					12	203	—	44
% from all other sources					(1)	(31)	—	(10)

(1) Fiscal 2025 primarily includes restructuring and other costs related to the integration of the acquired Berry business, and costs attributable to group wide initiatives to partly offset divested earnings from the Russian business.

(2) Additional amortization incurred on inventories in connection with the Berry acquisition.

(3) Amortization of acquired intangible assets from business combinations.

(4) Reflects the impact of acquired, disposed, and ceased operations.

(\$ million)	Twelve Months Ended June 30, 2024				Twelve Months Ended June 30, 2025			
	Global Flexible Packaging Solutions	Global Rigid Packaging Solutions	Other	Total	Global Flexible Packaging Solutions	Global Rigid Packaging Solutions	Other	Total
<b>Net income attributable to Amcor</b>				<b>730</b>				<b>511</b>
Net income attributable to non-controlling interests				10				7
Tax expense				163				135
Interest expense, net				310				347
<b>EBIT</b>	<b>1,147</b>	<b>185</b>	<b>(119)</b>	<b>1,213</b>	<b>1,162</b>	<b>180</b>	<b>(342)</b>	<b>1,000</b>
Impact of highly inflationary accounting	—	53	—	53	5	11	—	16
Restructuring and other related activities, net <sup>(1)</sup>	79	18	—	97	63	1	—	64
Berry Transaction & Integration	—	—	—	—	18	11	173	202
Merger related compensation	—	—	—	—	—	—	41	41
CEO transition costs	—	—	8	8	—	—	—	—
Inventory step-up amortization <sup>(2)</sup>	—	—	—	—	27	106	—	133
Other	5	—	17	22	12	(4)	13	21
Amortization of acquired intangibles <sup>(3)</sup>	164	3	—	167	172	70	4	246
<b>Adjusted EBIT</b>	<b>1,395</b>	<b>259</b>	<b>(94)</b>	<b>1,560</b>	<b>1,458</b>	<b>375</b>	<b>(110)</b>	<b>1,723</b>
<b>Adjusted EBIT / sales %</b>	<b>13.5 %</b>	<b>7.8 %</b>		<b>11.4 %</b>	<b>13.4 %</b>	<b>9.1 %</b>		<b>11.5 %</b>
<b>Reconciliation of adjusted growth to constant currency growth</b>								
% growth - Adjusted EBIT					<b>5</b>	<b>45</b>	<b>—</b>	<b>11</b>
% currency impact					<b>1</b>	<b>3</b>	<b>—</b>	<b>1</b>
<b>% constant currency growth</b>					<b>5</b>	<b>47</b>	<b>—</b>	<b>12</b>
% constant currency made up of:								
% items affecting comparability <sup>(4)</sup>					<b>3</b>	<b>57</b>		<b>13</b>
% from all other sources					<b>2</b>	<b>(10)</b>		<b>(1)</b>

(1) Fiscal 2025 primarily includes restructuring and other costs related to the integration of the acquired Berry business, and costs attributable to group wide initiatives to partly offset divested earnings from the Russian business.

(2) Additional amortization incurred on inventories in connection with the Berry acquisition.

(3) Amortization of acquired intangible assets from business combinations.

(4) Reflects the impact of acquired, disposed, and ceased operations.

#### Reconciliation of net debt

(\$ million)	June 30, 2024	June 30, 2025
Cash and cash equivalents	(588)	(827)
Short-term debt	84	116
Current portion of long-term debt	12	141
Long-term debt excluding current portion	6,603	13,841
<b>Net debt</b>	<b>6,111</b>	<b>13,271</b>

#### Cautionary Statement Regarding Forward-Looking Statements

Unless otherwise indicated, references to "Amcor," the "Company," "we," "our," and "us" in this document refer to Amcor plc and its consolidated subsidiaries. This document contains certain statements that are "forward-looking statements" within the meaning of the safe harbor provisions of the U.S. Private Securities Litigation Reform Act of 1995. Forward-looking statements are generally identified with words like "believe," "expect," "target," "project," "may," "could," "would," "approximately," "possible," "will," "should," "intend," "plan," "anticipate," "commit," "estimate," "potential," "ambitions," "outlook," or "continue," the negative of these words, other terms of similar meaning, or the use of future dates. Such statements are based on the current expectations of the management of Amcor and are qualified by the inherent risks and uncertainties surrounding future expectations generally. Actual results could differ materially from those currently anticipated due to a number of risks and uncertainties. Neither Amcor nor any of its respective directors, executive officers, or advisors, provide any representation, assurance, or guarantee that the occurrence of the events expressed or implied in any forward-looking statements will actually occur or if any of them do occur, what impact they will have on the business, results of operations or financial condition of Amcor. Should any risks and uncertainties develop into actual events, these developments could have a material adverse effect on Amcor's business, including the ability to successfully realize the expected benefits of the merger of Amcor and Berry Global Group, Inc. Risks and uncertainties that could cause actual results to differ from expectations include, but are not limited to: risks arising from the integration of the Amcor and Berry Global Group, Inc., ("Berry Global") businesses as a result of the Merger completed on April 30, 2025 (the "Transaction"); risk of continued

substantial and unexpected costs or expenses resulting from the Transaction; risk that the anticipated benefits of the Transaction may not be realized when expected or at all; risk that the Company's significant indebtedness may limit its flexibility and increase its borrowing costs; risk that the Merger related tax liabilities could have a material impact on the Company's financial results; changes in consumer demand patterns and customer requirements in numerous industries; risk of loss of key customers, a reduction in their production requirements, or consolidation among key customers; significant competition in the industries and regions in which we operate; an inability to expand our current business effectively through either organic growth, including product innovation, investments, or acquisitions; challenging global economic conditions; impacts of operating internationally; price fluctuations or shortages in the availability of raw materials, energy and other inputs, which could adversely affect our business; production, supply, and other commercial risks, including counterparty credit risks, which may be exacerbated in times of economic volatility; pandemics, epidemics, or other disease outbreaks; an inability to attract, develop, and retain our skilled workforce and manage key transitions; labor disputes and an inability to renew collective bargaining agreements at acceptable terms; physical impacts of climate change; significant disruption at key manufacturing facilities; cybersecurity risks, which could disrupt our operations or risk of loss of our sensitive business information; failures or disruptions in our information technology systems which could disrupt our operations, compromise customer, employee, supplier, and other data; rising interest rates that increase our borrowing costs on our variable rate indebtedness and could have other negative impacts; foreign exchange rate risk; a significant write-down of goodwill and/or other intangible assets; a failure to maintain an effective system of internal control over financial reporting; an inability of our insurance policies, including our use of a captive insurance company, to provide adequate protection against all of the key operational risks we face; an inability to defend our intellectual property rights or intellectual property infringement claims against us; litigation, including product liability claims or litigation related to Environmental, Social, and Governance ("ESG") matters, or regulatory developments; increasing scrutiny and changing expectations from investors, customers, suppliers, and governments with respect to our ESG practices and commitments resulting in additional costs or exposure to additional risks; changing ESG government regulations including climate-related rules; changing environmental, health, and safety laws; changes in tax laws or changes in our geographic mix of earnings; and changes in trade policy, including tariff and custom regulations or failing to comply with such regulations. These risks and uncertainties are supplemented by those identified from time to time in our filings with the Securities and Exchange Commission (the "SEC"), including without limitation, those described under Part I, "Item 1A - Risk Factors" in our Annual Report on Form 10-K for the fiscal year ended June 30, 2024, and as updated by our quarterly reports on Form 10-Q. You can obtain copies of Amcor's filings with the SEC for free at the SEC's website ([www.sec.gov](http://www.sec.gov)). Forward-looking statements included herein are made only as of the date hereof and Amcor does not undertake any obligation to update any forward-looking statements, or any other information in this communication, as a result of new information, future developments or otherwise, or to correct any inaccuracies or omissions in them which become apparent, except as expressly required by law. All forward-looking statements in this communication are qualified in their entirety by this cautionary statement.

### **Presentation of non-GAAP information**

Included in this release are measures of financial performance that are not calculated in accordance with U.S. GAAP. These measures include adjusted EBITDA and EBITDA (calculated as earnings before interest and tax and depreciation and amortization), adjusted EBIT and EBIT (calculated as earnings before interest and tax), adjusted net income, adjusted earnings per share, adjusted free cash flow, net debt and synergies from the Merger. In arriving at these non-GAAP measures, we exclude items that either have a non-recurring impact on the income statement or which, in the judgment of our management, are items that, either as a result of their nature or size, could, were they not singled out, potentially cause investors to extrapolate future performance from an improper base. Note that while amortization of acquired intangible assets is excluded from non-GAAP adjusted financial measures, the revenue of the acquired entities and all other expenses unless otherwise stated, are reflected in our non-GAAP financial performance earnings measures. While not all inclusive, examples of these items include: material restructuring programs, including associated costs such as employee severance, pension and related benefits, impairment of property and equipment and other assets, accelerated depreciation, termination payments for contracts and leases, contractual obligations, and any other qualifying costs related to restructuring plans; material sales and earnings from disposed or ceased operations and any associated profit or loss on sale of businesses or subsidiaries; changes in the fair value of economic hedging instruments on commercial paper and contingent purchase consideration; pension settlements; impairments in goodwill and equity method investments; material acquisition compensation and transaction costs such as due diligence expenses, professional and legal fees, financing-related expenses; and integration costs; material purchase accounting adjustments for inventory; amortization of acquired intangible assets from business combination; gains or losses on significant property and divestitures and significant property and other impairments, net of insurance recovery; certain regulatory and legal matters; impacts from highly inflationary accounting; expenses related to the Company's Chief Executive Officer transition; and impacts related to the Russia-Ukraine conflict.

Amcor also evaluates performance on a comparable constant currency basis, which measures financial results assuming constant foreign currency exchange rates used for translation based on the average rates in effect for the comparable prior year period. In order to compute comparable constant currency results, we multiply or divide, as appropriate, current-year U.S. dollar results by the current year average foreign exchange rates and then multiply or divide, as appropriate, those amounts by the prior-year average foreign exchange rates. We then adjust for other items affecting comparability. While not all inclusive, examples of items affecting comparability include the difference between sales or earnings in the current period and the prior period related to disposed, or ceased operations. Comparable constant currency net sales performance also excludes the impact from passing through movements in raw material costs.

Management has used and uses these measures internally for planning, forecasting and evaluating the performance of the Company's reporting segments and certain of the measures are used as a component of Amcor's Board of Directors' measurement of Amcor's performance for incentive compensation purposes. Amcor believes that these non-GAAP measures are useful to enable investors to perform comparisons of current and historical performance of the Company. For each of these non-GAAP financial measures, a reconciliation to the most directly comparable U.S. GAAP financial measure has been provided herein. These non-GAAP financial measures should not be construed as an alternative to results determined in accordance with U.S. GAAP. The Company provides guidance on a non-GAAP basis as we are unable to predict with reasonable certainty the ultimate outcome and timing of certain significant forward-looking items without unreasonable effort. These items include but are not limited to the impact of foreign exchange translation, restructuring program costs, asset impairments, possible gains and losses on the sale of assets, certain tax related events, and difficulty in making accurate forecasts and projections in connection with the legacy Berry Global business given recency of access to all relevant information. These items are uncertain, depend on various factors, and could have a material impact on U.S. GAAP earnings and cash flow measures for the guidance period.

### **Presentation of combined volume performance**

In order to provide the most meaningful comparison of results of volume performance by region and end market for the Amcor group and for each of its reportable segments, the Company has included commentary to reflect Amcor's estimate of year-over-year volume performance for the three months ended June 30, 2025 for the legacy Amcor business, combined with year-over-year volume performance for the period May 1, 2025 to June 30, 2025 for the legacy Berry Global business. The combined volume performance information has been presented for informational purposes and Amcor believes this information reflects the impact of the combination, taking into account the allocation of volumes across both legacy businesses was managed on a combined network basis from May 1, 2025. The combined volume performance information should be read in conjunction with the separate historical financial statements and accompanying notes contained in each of the Amcor and Berry Global periodic reports, as available. For avoidance of doubt, the combined volume performance information is not intended to be, and was not, prepared on a basis consistent with pro forma financial information required by Article 11 of Regulation S-X.

### **Dividends**

Amcor has received a waiver from the ASX's settlement operating rules, which will allow the Company to defer processing conversions between its ordinary share and CDI registers from September 4, 2025 to September 5, 2025 inclusive.

# Fiscal 2025 **fourth quarter** results

**Peter Konieczny**

CEO

**Michael Casamento**

CFO

14 August 2025



# Disclaimers and notes

## Cautionary Statement Regarding Forward-Looking Statements

Unless otherwise indicated, references to "Amcor," the "Company," "we," "our," and "us" in this document refer to Amcor plc and its consolidated subsidiaries. This document contains certain statements that are "forward-looking statements" within the meaning of the safe harbor provisions of the U.S. Private Securities Litigation Reform Act of 1995. Forward-looking statements are generally identified with words like "believe," "expect," "target," "project," "may," "could," "would," "approximately," "possible," "will," "should," "intend," "plan," "anticipate," "commit," "estimate," "potential," "ambitions," "outlook," or "continue," the negative of these words, other terms of similar meaning, or the use of future dates. Such statements are based on the current expectations of the management of Amcor and are qualified by the inherent risks and uncertainties surrounding future expectations generally. Actual results could differ materially from those currently anticipated due to a number of risks and uncertainties. Neither Amcor nor any of its respective directors, executive officers, or advisors, provide any representation, assurance, or guarantee that the occurrence of the events expressed or implied in any forward-looking statements will actually occur or if any of them do occur, what impact they will have on the business, results of operations or financial condition of Amcor. Should any risks and uncertainties develop into actual events, these developments could have a material adverse effect on Amcor's business, including the ability to successfully realize the expected benefits of the merger of Amcor and Berry Global Group, Inc. Risks and uncertainties that could cause actual results to differ from expectations include, but are not limited to: risks arising from the integration of the Amcor and Berry Global Group, Inc. ("Berry Global") businesses as a result of the Merger completed on April 30, 2025 (the "Transaction"); risk of continued substantial and unexpected costs or expenses resulting from the Transaction; risk that the anticipated benefits of the Transaction may not be realized when expected or at all; risk that the Company's significant indebtedness may limit its flexibility and increase its borrowing costs; risk that the Merger related tax liabilities could have a material impact on the Company's financial results; changes in consumer demand patterns and customer requirements in numerous industries; risk of loss of key customers, a reduction in their production requirements, or consolidation among key customers; significant competition in the industries and regions in which we operate; an inability to expand our current business effectively through either organic growth, including product innovation, investments, or acquisitions; challenging global economic conditions; impacts of operating internationally; price fluctuations or shortages in the availability of raw materials, energy and other inputs, which could adversely affect our business; production, supply, and other commercial risks, including counterparty credit risks, which may be exacerbated in times of economic volatility; pandemics, epidemics, or other disease outbreaks; an inability to attract, develop, and retain our skilled workforce and manage key transitions; labor disputes and an inability to renew collective bargaining agreements at acceptable terms; physical impacts of climate change; significant disruption at key manufacturing facilities; cybersecurity risks, which could disrupt our operations or risk of loss of our sensitive business information; failures or disruptions in our information technology systems which could disrupt our operations, compromise customer, employee, supplier, and other data; rising interest rates that increase our borrowing costs on our variable rate indebtedness and could have other negative impacts; foreign exchange rate risk; a significant write-down of goodwill and/or other intangible assets; a failure to maintain an effective system of internal control over financial reporting; an inability of our insurance policies, including our use of a captive insurance company, to provide adequate protection against all of the key operational risks we face; an inability to defend our intellectual property rights or intellectual property infringement claims against us; litigation, including product liability claims or litigation related to Environmental, Social, and Governance ("ESG") matters, or regulatory developments; increasing scrutiny and changing expectations from investors, customers, suppliers, and governments with respect to our ESG practices and commitments resulting in additional costs or exposure to additional risks; changing ESG government regulations including climate-related rules; changing environmental, health, and safety laws; changes in tax laws or changes in our geographic mix of earnings; and changes in trade policy, including tariff and custom regulations or failing to comply with such regulations. These risks and uncertainties are supplemented by those identified from time to time in our filings with the Securities and Exchange Commission (the "SEC"), including without limitation, those described under Part I, "Item 1A - Risk Factors" in our Annual Report on Form 10-K for the fiscal year ended June 30, 2024, and as updated by our quarterly reports on Form 10-Q. You can obtain copies of Amcor's filings with the SEC for free at the SEC's website ([www.sec.gov](http://www.sec.gov)). Forward-looking statements included herein are made only as of the date hereof and Amcor does not undertake any obligation to update any forward-looking statements, or any other information in this communication, as a result of new information, future developments or otherwise, or to correct any inaccuracies or omissions in them which become apparent, except as expressly required by law. All forward-looking statements in this communication are qualified in their entirety by this cautionary statement.

## Presentation of current period and prior period financial results

Constant currency  $\Delta\%$  excludes the impact of movements in foreign exchange rates. Further details related to non-GAAP measures and reconciliations to GAAP measures can be found in Appendix slides titled "Reconciliation of non-GAAP financial measures" in this presentation. On April 30, 2025, the all-stock acquisition of Berry Global was completed at a fixed exchange ratio of 7.25 Amcor shares for each Berry share. Unless otherwise specified, all results presented throughout this document for the three months ended June 30, 2025 and the twelve months ended June 30, 2025 do not include the financial results for the Berry Global business for the month of April 2025 and the months of July 2024 to April 2025 respectively, due to the closing of the combination between Amcor and Berry Global on April 30, 2025. Unless otherwise specified, all results presented throughout this document for the three months ended June 30, 2024 and the twelve months ended June 30, 2024 reflect the historical financial results of the legacy Amcor plc group which is considered the accounting acquirer in the combination between Amcor plc and Berry Global, which closed on April 30, 2025.

## Presentation of non-GAAP information

Included in this release are measures of financial performance that are not calculated in accordance with U.S. GAAP. These measures include adjusted EBITDA and EBITDA (calculated as earnings before interest and tax and depreciation and amortization), adjusted EBIT and EBIT (calculated as earnings before interest and tax), adjusted net income, adjusted earnings per share, adjusted free cash flow, net debt and synergies from the Merger. In arriving at these non-GAAP measures, we exclude items that either have a non-recurring impact on the income statement or which, in the judgment of our management, are items that, either as a result of their nature or size, could, were they not singled out, potentially cause investors to extrapolate future performance from an improper base. Note that while amortization of acquired intangible assets is excluded from non-GAAP adjusted financial measures, the revenue of the acquired entities and all other expenses unless otherwise stated, are reflected in our non-GAAP financial performance earnings measures. While not all inclusive, examples of these items include: material restructuring programs, including associated costs such as employee severance, pension and related benefits, impairment of property and equipment and other assets, accelerated depreciation, termination payments for contracts and leases, contractual obligations, and any other qualifying costs related to restructuring plans; material sales and earnings from disposed or ceased operations and any associated profit or loss on sale of businesses or subsidiaries; changes in the fair value of economic hedging instruments on commercial paper and contingent purchase consideration; pension settlements; impairments in goodwill and equity method investments; material acquisition compensation and transaction costs such as due diligence expenses, professional and legal fees, financing-related expenses; and integration costs; material purchase accounting adjustments for inventory; amortization of acquired intangible assets from business combination; gains or losses on significant property and divestitures and significant property and other impairments, net of insurance recovery; certain regulatory and legal matters; impacts from highly inflationary accounting; expenses related to the Company's Chief Executive Officer transition; and impacts related to the Russia-Ukraine conflict. Amcor also evaluates performance on a comparable constant currency basis, which measures financial results assuming constant foreign exchange rates used for translation based on the average rates in effect for the comparable prior year period. In order to compute comparable constant currency results, we multiply or divide, as appropriate, current-year U.S. dollar results by the current year average foreign exchange rates and then multiply or divide, as appropriate, those amounts by the prior-year average foreign exchange rates. We then adjust for other items affecting comparability. While not all inclusive, examples of items affecting comparability include the difference between sales or earnings in the current period and the prior period related to disposed, or ceased operations. Comparable constant currency net sales performance also excludes the impact from passing through movements in raw material costs. Management has used and uses these measures internally for planning, forecasting and evaluating the performance of the Company's reporting segments and certain of the measures are used as a component of Amcor's Board of Directors' measurement of Amcor's performance for incentive compensation purposes. Amcor believes that these non-GAAP measures are useful to enable investors to perform comparisons of current and historical performance of the Company. For each of these non-GAAP financial measures, a reconciliation to the most directly comparable U.S. GAAP financial measure has been provided herein. These non-GAAP financial measures should not be construed as an alternative to results determined in accordance with U.S. GAAP. The Company provides guidance on a non-GAAP basis as we are unable to predict with reasonable certainty the ultimate outcome and timing of certain significant forward-looking items without unreasonable effort. These items include but are not limited to the impact of foreign exchange transition, restructuring program costs, asset impairments, possible gains and losses on the sale of assets, certain tax related events, and difficulty in making accurate forecasts and projections in connection with the legacy Berry Global business given recency of access to all relevant information. These items are uncertain, depend on various factors, and could have a material impact on U.S. GAAP earnings and cash flow measures for the guidance period.

## Presentation of combined volume performance

In order to provide the most meaningful comparison of results of volume performance by region and end market for the Amcor group and for each of its reportable segments, the Company has included commentary to reflect Amcor's estimate of year-over-year volume performance for the three months ended June 30, 2025 for the legacy Amcor business, combined with year-over-year volume performance for the period May 1, 2025 to June 30, 2025 for the legacy Berry Global business. The combined volume performance information has been presented for informational purposes and Amcor believes this information reflects the impact of the combination, taking into account the allocation of volumes across both legacy businesses was managed on a combined network basis from May 1, 2025. The combined volume performance information should be read in conjunction with the separate historical financial statements and accompanying notes contained in each of the Amcor and Berry Global periodic reports, as available. For avoidance of doubt, the combined volume performance information is not intended to be, and was not, prepared on a basis consistent with pro forma financial information required by Article 11 of Regulation S-X.



# Safety is always our number one priority

## Delivering industry leading safety performance

Guided by our values

**SAFETY**

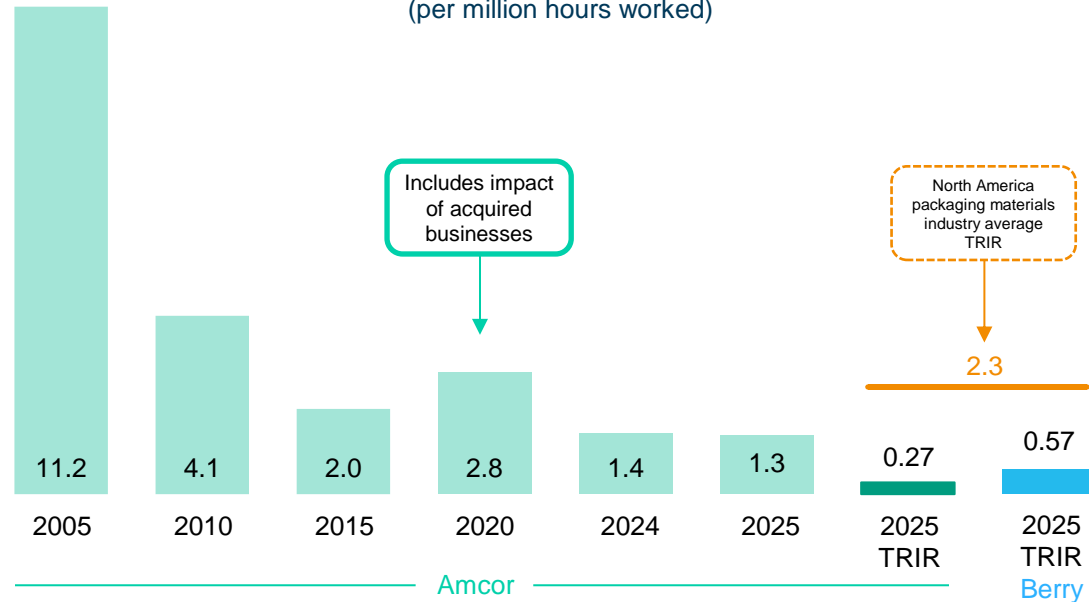
**CUSTOMERS**

**WINNING**

**AGILITY**

**SUSTAINABILITY**

**Annual recordable-case frequency rate**  
(per million hours worked)



Notes: Amcor data, including 2025, reflects legacy Amcor business only. Berry 2025 TRIR reflects legacy Berry Global business for the months of May and June 2025. Recordable Case Frequency Rate (RCFR) expresses injuries per 1,000,000 hours worked. Graph data shown for a 12 month period ended June 30 unless otherwise indicated. Acquired businesses (including Bemis) are included in 2020 and account for the increase in frequency rate compared with 2015. Total Recordable Incident Rate (TRIR) expresses injuries per 200,000 hours worked. Amcor's TRIR is equivalent to Amcor's rate under OSHA (Occupational Safety & Health Administration). Average of North America paper manufacturing, plastic and rubber products manufacturing and printing and related support activities TRIR rate for 2023. Source: US Bureau of Labor Statistics.

**Transformational acquisition of Berry Global closed 30 April:** Stronger business, more complete offering for customers, significant value creation for shareholders

- Increase in sales and EBIT from a transformational acquisition

- Integration and synergy realization tracking in line with expectations

- Identified core portfolio and strategic optimization actions

- Strong year of growth expected in FY26: adjusted EPS up ~12-17%; FCF to double to \$1.8-\$1.9 billion

# Financial result highlights

Increase in sales and EBIT from a strategically strengthened business

For personal use only

## 4Q Net Sales

**\$5,082m**  
+43%

## 4Q Adj. EBIT

**\$611m**  
+34%

## 4Q Adj. EPS<sup>1</sup>

**20.0cps**  
-5%

## FY25 Net Sales

**\$15,009m**  
+11%

## FY25 Adj. EBIT

**\$1,723m**  
+12%

## FY25 Adj. EPS<sup>1</sup>

**71.2cps**  
+3%

## Fourth quarter

- **Combined volumes down 1.7%<sup>2</sup>.** Generally softer than anticipated, particularly in North America. Volumes down ~1.4% ex NA beverage<sup>2</sup>
- **Adj EBIT** includes ~\$200 million net acquired earnings. Remaining variation largely reflects lower than anticipated volumes along with higher costs in the NA beverage business

## FY25

- **Adj. FCF \$926m**, in line with expectations.
- **Dividend Per Share** increased to 51cps

Notes: Adjusted EBITDA, EBIT, EPS and FCF presented on an adjusted basis and growth rates for these, and Net Sales exclude the impact of movements in foreign exchange rates. Adjusted non-GAAP measures exclude items which are not considered representative of ongoing operations. Further details related to non-GAAP measures and reconciliations to U.S. GAAP measures can be found in the appendix section. <sup>1</sup>EPS includes impact of consideration shares issued for Berry Global acquisition. For fiscal 2025, the sum of quarters do not equal the total year amount due to the impact of changes in average quarterly shares outstanding. <sup>2</sup>Reflects Amcor's estimate of year-over-year volume performance for the three months ended June 30, 2025 combined with Berry year over year volume performance for the period May 1, 2025 to June 30, 2025. Full details related to these disclosures can be found under "Presentation of combined volume performance".

# 100+ days of integrating two highly complementary businesses

On track. Building momentum. Confidence increased.

- Customer feedback positive

- Leadership teams in place. Culture aligning around shared purpose, values and behaviors

- To date, >200 duplicated roles removed and 5 site closures actioned

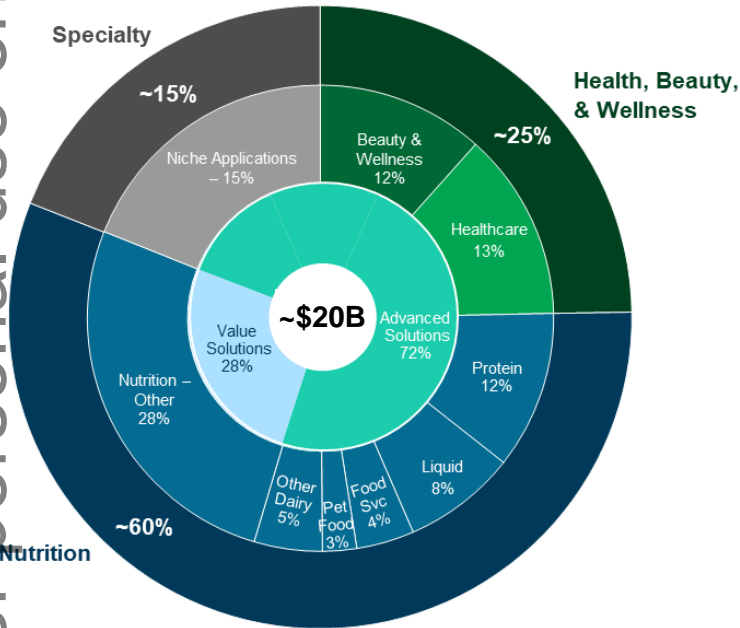
- Procurement pipeline validated and quick wins secured

- Synergy expectations reaffirmed. \$650m by year 3; \$260m in FY26



# Portfolio review identifies ~\$20bn core portfolio - Global Leader in consumer packaging and dispensing solutions for Nutrition and Health

For personal use only



## ~\$20 billion revenue core portfolio:

**Where we play** Leading positions in large, resilient and growing end markets

~75% in more innovative Advanced Solutions platforms

~50% focused on high growth, high margin categories

End markets with significant room for growth

**How we win**

Expanded multi-format product offering

Unmatched material science, technical and sustainability capabilities

Global scale and breadth for supply chain flexibility and resilience

Capacity to reinvest

**Significant room for value-creating growth in attractive end markets**

# Unique multi-format product offering with room to grow

For personal use only

Expanded and uniquely positioned Flexible and Rigid Packaging Solutions product offering



Amcor revenue (\$) within total addressable market<sup>1</sup>



<sup>1</sup> Amcor revenue reflects management estimate of combined revenue for legacy Amcor and legacy Berry for FY2025. Total addressable market per leading consulting firm estimates.

~50% of core portfolio focused on six high-growth, high margin categories. Supplying highly differentiated solutions



### Healthcare

### Beauty and Wellness

### Pet Food

### Foodservice

### Liquids

### Protein

### Key growth drivers

Anti-counterfeiting

Social media influence

Humanization and premiumization

On-the-go, convenient consumption

Organic food safety

Food safety and fresh protein consumption

Aging population and increased access

Personalization

Demand for eco-friendly products

Affordability and accessibility

More sustainable formats (recyclability, PCR, lightweighting)

Customer automation

Regulatory expertise

More sustainable formats (fiber, recyclability, PCR, refillable)

Organic, natural, and fresh pet food

More sustainable formats (fiber, recyclability, PCR)

Convenient consumption

More sustainable formats (recyclability, PCR)

### Category Growth<sup>1</sup>

5-7%

3-4%

5-6%

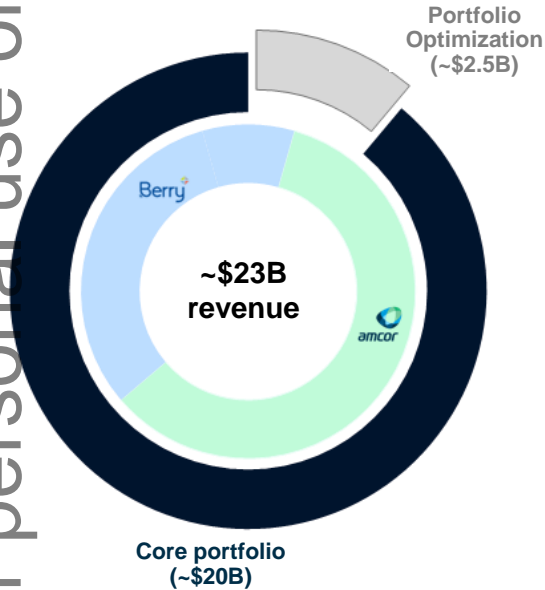
4-5%

3-4%

3-4%

# Identified portfolio optimization actions

For personal use only



- Combined sales of \$2.5 billion, including:
  - North America Beverage business. ~\$1.5 billion sales
  - Smaller businesses with combined sales of ~\$1 billion
- Businesses less aligned with one or more core portfolio attributes including:
  - Attractive growth & margin profile
  - Industry structure
  - Scale & leadership
- Exploring alternatives to maximize value, which may include restructuring, partnership and joint venture ownership models, cash sale or a combination thereof
- Actions initiated. While no definitive timeline, some progress expected in fiscal 2026
- Will remain disciplined and focused on maximizing value

**Portfolio optimization improves focus and drives faster growth**

# Global Flexible Packaging Solutions

## Benefits from acquired earnings, favorable price/mix trends and cost performance

For personal use only

### June quarter highlights

- Increased net sales of 18% includes 16% growth from ~\$420 million acquired sales, net of divestments
- Increased adjusted EBIT of 11% includes 12% growth (\$50 million) from acquired EBIT, net of divestments. Remaining year on year variation mainly reflects lower than anticipated volumes
- Combined volumes approximately 1.5% lower<sup>1</sup>
  - Volumes down LSD in North America - consumer and customer demand generally lower<sup>1</sup>
  - Volumes in Rest of World broadly in line with prior year - lower volumes in Europe partly offset by growth in Latin America and Asia<sup>1</sup>

\$m	4Q24	4Q25	CC $\Delta$
Net sales	2,686	3,205	+18%
Adjusted EBIT	403	450	+11%
Adjusted EBIT margin	15.0%	14.1%	



Revolutionary Perflex® shrink bag reduces material and improves production efficiency



AmPrima® Plus spouted pouch delivering against customer design, functionality and sustainability objectives



Bag-in-box liners with 50% recycled content



Notes: The Global Flexible Packaging Solutions segment includes Amcor's legacy Flexible Packaging business and the newly acquired Berry Global Flexibles business. CC refers to Constant Currency. CC growth reconciliations can be found in the appendix. Non-GAAP measures exclude items which are not considered representative of ongoing operations. Further details related to non-GAAP measures including Adjusted EBIT and reconciliations to U.S. GAAP measures can be found in the appendix. <sup>1</sup>Reflects Amcor's estimate of year-over-year volume performance for the three months ended June 30, 2025 combined with Berry year over year volume performance for the period May 1, 2025 to June, 30 2025. Full details related to these disclosures can be found under "Presentation of combined volume performance".

# Global Rigid Packaging Solutions

## Customer offering, capabilities and financial profile transformed through Berry acquisition

### June quarter highlights

Increased net sales of 121% includes 129% growth from ~\$1.1bn acquired sales, net of divestments

Increased adjusted EBIT of 173% driven by 203% growth (~\$150 million) from acquired EBIT, net of divestments. Unfavorable variance in the balance of the business reflects lower than anticipated volumes and higher costs in the North America Beverage business

Combined segment volumes down 2% (down ~1% ex. N.A. Beverage)<sup>1</sup>

- North America volumes down LSD ex. N.A. Beverage; consumer and customer demand generally lower<sup>1</sup>
- Volumes in Rest of World in line with prior year<sup>1</sup>

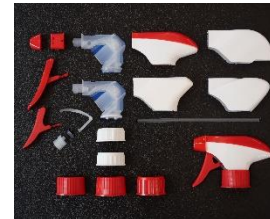
\$m	4Q24	4Q25	CC $\Delta$
Net sales	849	1,877	+121%
Adjusted EBIT	75	204	+173%
Adjusted EBIT margin	8.8%	10.9%	



Bottle and cap solution incorporating recycled Polypropylene delivers against luxury and sustainability need for our customer



Bottle and tamper evident tethered closure with 50% recycled content



Multi component trigger dispensing system with metal spring replacement

Notes: The Global Rigid Packaging Solutions segment includes Amcor's legacy Rigid Packaging business and the newly acquired Berry Global Consumer Packaging International and Consumer Packaging North America businesses. CC refers to Constant Currency. CC growth reconciliations can be found in the appendix. Non-GAAP measures exclude items which are not considered representative of ongoing operations. Further details related to non-GAAP measures including Adjusted EBIT and reconciliations to U.S. GAAP measures can be found in the appendix. <sup>1</sup>Reflects Amcor's estimate of year-over-year volume performance for the three months ended June 30, 2025 combined with Berry year over year volume performance for the period May 1, 2025 to June 30, 2025. Full details related to these disclosures can be found under "Presentation of combined volume performance".

# Cash flow and balance sheet

For personal use only

Cash flow (\$ million)	FY24	FY25
<b>Adjusted EBITDA</b>	<b>1,962</b>	<b>2,186</b>
Interest and tax payments, net	(548)	(576)
Capital expenditure	(492)	(580)
Movement in working capital	(15)	34
Other	45	(138)
<b>Adjusted Free Cash Flow</b>	<b>952</b>	<b>926</b>

Balance sheet	June 30, 2025
Net debt (\$ million)	13,271
Leverage <sup>1</sup> : Net debt / LTM EBITDA	~3.5x

- Adjusted Free Cash Flow of \$926 million in line with expectations
- ~\$850 million cash returned to shareholders year-to-date through compelling and growing dividend
- Leverage at ~3.5x in line with expectations
- Expect leverage of ~3.1 to 3.2x at 30 June 2026, excluding proceeds from potential asset sales



Notes: Non-GAAP measures exclude items which are not considered representative of ongoing operations. Further details related to non-GAAP measures including Adjusted EBITDA and Adjusted Free Cash Flow and reconciliations to U.S. GAAP measures can be found in the appendix section.

<sup>1</sup>Leverage calculated as Net debt divided by management estimate of FY25 Adjusted cash EBITDA for Amcor and Berry.

For personal use only

## For the fiscal year ended June 30, 2026, the Company expects:

- Adjusted EPS of approximately 80 to 83 cents per share, which represents constant currency growth of 12% to 17% compared with 71.2 cents per share in fiscal 2025. This includes pre-tax synergy benefits related to the Berry Global acquisition of approximately \$260 million
- Free Cash Flow of approximately \$1.8 to \$1.9 billion, which is after deducting approximately \$220 million of net cash integration and transaction costs related to the Berry Global acquisition

## Other guidance considerations include:

- Capital expenditure between \$850 to \$900 million;
- Net interest expense between \$570 to \$600 million; and
- An effective tax rate between 19% and 21%.

*Amcor's guidance for fiscal 2026 reflects a full 12 months ownership of the Berry Global business and does not take into account the impact of potential portfolio optimization actions which may be completed through the year.*

*Amcor's guidance contemplates a range of factors which create a higher degree of uncertainty and additional complexity when estimating future financial results. Refer to slide 2 for further information. Reconciliations of the fiscal 2026 projected non-GAAP measures are not included herein because the individual components are not known with certainty as individual financial statements for fiscal 2025 have not been completed.*

**Transformational acquisition of Berry Global closed 30 April:** Stronger business, more complete offering for customers, significant value creation for shareholders

- Increase in sales and EBIT from a transformational acquisition
- Integration and synergy realization tracking in line with expectations
- Identified core portfolio and strategic optimization actions
- Strong year of growth expected in FY26: adjusted EPS up ~12-17%; FCF to double to \$1.8-\$1.9 billion



For personal use only

# Appendix slides

Supplementary schedules and reconciliations

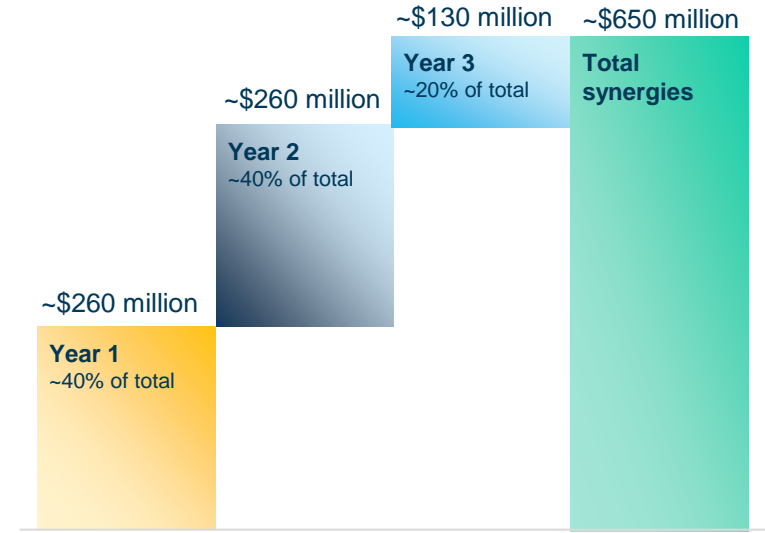
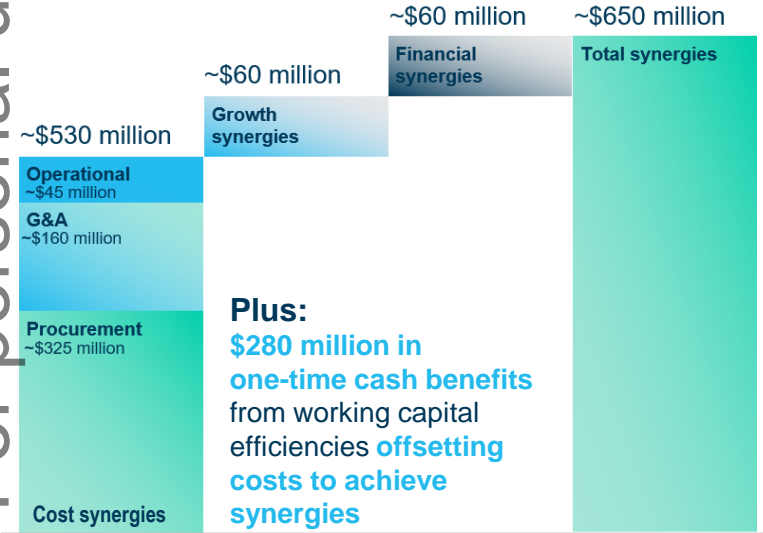


# Synergy expectations reaffirmed – total of \$650 million expected by year 3

For personal use only

Sources of synergy benefits identified and delivery not dependent on macro environment

Reaffirmed \$260 million synergy benefits expected in fiscal 2026



Note: Synergies referenced on a pre-tax basis.

# Amcor and Berry combination will deliver significant uplift in long-term shareholder Value Creation Model

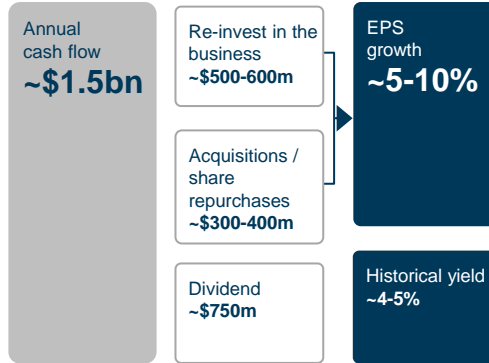
Accelerated growth platform

\$3+ billion annual cash flow<sup>1</sup>

Continue to grow dividend per share

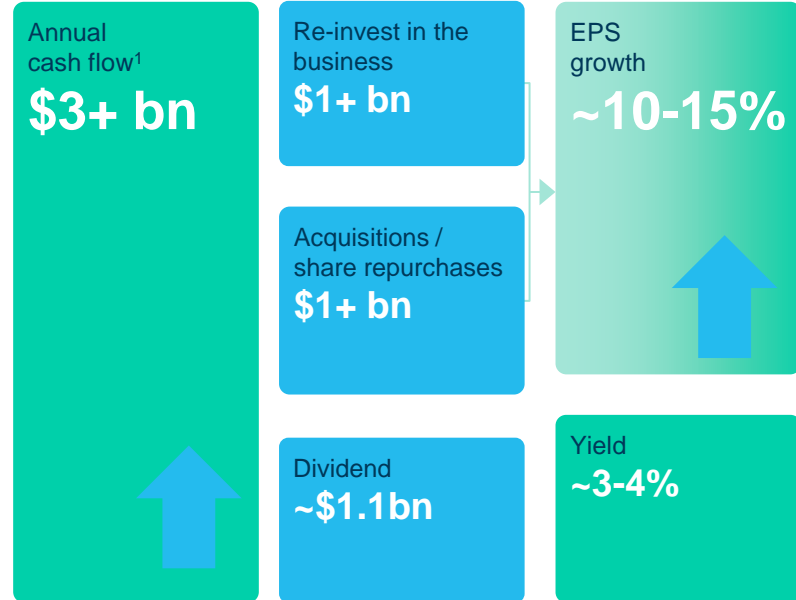
Ability to pursue accretive M&A and/or share repurchases

## Amcor legacy current model



Total shareholder value ~10-15%

## Amcor new model



Total shareholder value ~13-18%

Note: Reflects long-term estimates. <sup>1</sup> Defined as combined operating cash flow including run-rate synergies, after interest and tax, before capital expenditures.

# Reconciliations of non-GAAP financial measures

## Reconciliation of adjusted Earnings before interest, tax, depreciation and amortization (EBITDA), Earnings before interest and tax (EBIT), Net income, Earnings per share (EPS) and Free Cash Flow

(\$ million)	Three Months Ended June 30, 2024				Three Months Ended June 30, 2025			
	EBITDA	EBIT	Net Income	EPS (Diluted US cents) <sup>(1)</sup>	EBITDA	EBIT	Net Income	EPS (Diluted US cents) <sup>(1)</sup>
<b>Net income attributable to Amcor</b>	<b>257</b>	<b>257</b>	<b>257</b>	<b>17.8</b>	<b>(39)</b>	<b>(39)</b>	<b>(39)</b>	<b>(1.9)</b>
Net income attributable to non-controlling interests	4	4			—	—		
Tax expense	56	56			(6)	(6)		
Interest expense, net	78	78			125	125		
Depreciation and amortization	136				309			
<b>EBITDA, EBIT, Net income and EPS</b>	<b>531</b>	<b>395</b>	<b>257</b>	<b>17.8</b>	<b>389</b>	<b>80</b>	<b>(39)</b>	<b>(1.9)</b>
Impact of highly inflationary accounting	(2)	(2)	(2)	(0.1)	8	8	8	0.4
Restructuring and other related activities, net <sup>(2)</sup>	15	15	15	1.0	29	29	29	1.4
Berry Transaction & Integration	—	—	—	—	166	166	176	8.6
Merger related compensation	—	—	—	—	41	41	41	2.0
Inventory step-up amortization <sup>(3)</sup>	—	—	—	—	133	133	133	6.5
Other	5	5	5	0.3	24	24	24	1.2
Amortization of acquired intangibles <sup>(4)</sup>		41	41	2.9		130	130	6.4
Tax effect of above items			(11)	(0.8)			(94)	(4.6)
<b>Adjusted EBITDA, EBIT, Net income, and EPS</b>	<b>550</b>	<b>454</b>	<b>305</b>	<b>21.1</b>	<b>789</b>	<b>611</b>	<b>408</b>	<b>20.0</b>
<b>Reconciliation of adjusted growth to constant currency growth</b>								
% growth - Adjusted EBITDA, EBIT, Net income and EPS					44	35	34	(5)
% currency impact					(1)	—	—	—
<b>% constant currency growth</b>					<b>43</b>	<b>34</b>	<b>34</b>	<b>(5)</b>
% constant currency made up of:								
% Items affecting comparability <sup>(5)</sup>					51	44	40	1
% from all other sources					(8)	(10)	(7)	(6)
<b>Adjusted EBITDA</b>	<b>550</b>				<b>789</b>			
Interest paid, net	(99)				(123)			
Income tax paid	(90)				(138)			
Purchase of property, plant and equipment and other intangible assets	(134)				(220)			
Proceeds from sales of property, plant and equipment and other intangible assets	27				9			
Movement in working capital	610				744			
Other	(27)				(118)			
<b>Adjusted Free Cash Flow</b>	<b>837</b>				<b>943</b>			

(1) Calculation of diluted EPS for the three months ended June 30, 2024 excludes net income attributable to shares to be repurchased under forward contracts of \$1 million. For fiscal 2025, the sum of quarters do not equal the total year amount due to the impact of changes in average quarterly shares outstanding.

(2) Fiscal 2025 primarily includes restructuring and other costs related to the integration of the acquired Berry business, and costs attributable to group wide initiatives to partly offset divested earnings from the Russian business.

(3) Additional amortization incurred on inventories in connection with the Berry acquisition

(4) Amortization of acquired intangible assets from business combinations.

(5) Reflects the impact of acquired, disposed, and ceased operations.

# Reconciliations of non-GAAP financial measures

(\$ million)	Twelve Months Ended June 30, 2024				Twelve Months Ended June 30, 2025			
	EBITDA	EBIT	Net Income	EPS (Diluted US cents) <sup>(1)</sup>	EBITDA	EBIT	Net Income	EPS (Diluted US cents) <sup>(1)</sup>
<b>Net income attributable to Amcor</b>	<b>730</b>	<b>730</b>	<b>730</b>	<b>50.5</b>	<b>511</b>	<b>511</b>	<b>511</b>	<b>32.0</b>
Net income attributable to non-controlling interests	10	10			7	7		
Tax expense	163	163			135	135		
Interest expense, net	310	310			347	347		
Depreciation and amortization	569				710			
<b>EBITDA, EBIT, Net income and EPS</b>	<b>1,782</b>	<b>1,213</b>	<b>730</b>	<b>50.5</b>	<b>1,710</b>	<b>1,000</b>	<b>511</b>	<b>32.0</b>
Impact of highly inflationary accounting	53	53	53	3.7	16	16	16	1.0
Restructuring and other related activities, net <sup>(2)</sup>	97	97	97	6.7	64	64	64	4.0
Berry Transaction & Integration	—	—	—	—	202	202	217	13.6
Merger related compensation	—	—	—	—	41	41	41	2.6
CEO Transition costs	8	8	8	0.6	—	—	—	—
Inventory step-up amortization <sup>(3)</sup>	—	—	—	—	133	133	133	8.3
Other	22	22	22	1.5	21	21	21	1.3
Amortization of acquired intangibles <sup>(4)</sup>		167	167	11.6		246	246	15.4
Tax effect of above items			(62)	(4.4)			(113)	(7.0)
<b>Adjusted EBITDA, EBIT, Net income and EPS</b>	<b>1,962</b>	<b>1,560</b>	<b>1,015</b>	<b>70.2</b>	<b>2,186</b>	<b>1,723</b>	<b>1,136</b>	<b>71.2</b>
<b>Reconciliation of adjusted growth to constant currency growth</b>								
% growth - Adjusted EBITDA, EBIT, Net income, and EPS					11	11	12	1
% currency impact					1	1	1	1
<b>% constant currency growth</b>					<b>13</b>	<b>12</b>	<b>13</b>	<b>3</b>
% constant currency made up of:								
% items affecting comparability <sup>(5)</sup>					14	13	12	1
% from all other sources					(1)	(1)	2	2
<b>Adjusted EBITDA</b>	<b>1,962</b>				<b>2,186</b>			
Interest paid, net	(295)				(290)			
Income tax paid	(253)				(266)			
Purchase of property, plant and equipment and other intangible assets	(492)				(580)			
Proceeds from sales of property, plant and equipment and other intangible assets	39				18			
Movement in working capital	(15)				34			
Other	6				(156)			
<b>Adjusted Free Cash Flow</b>	<b>952</b>				<b>926</b>			

(1) Calculation of diluted EPS for the twelve months ended June 30, 2025 excludes net income attributable to shares to be repurchased under forward contracts of \$1 million. Calculation of diluted EPS for the twelve months ended June 30, 2024 excludes net income attributable to shares to be repurchased under forward contracts of \$3 million. For fiscal 2025, the sum of quarters do not equal the total year amount due to the impact of changes in average quarterly shares outstanding.

(2) Fiscal 2025 primarily includes restructuring and other costs related to the integration of the acquired Berry business, and costs attributable to group wide initiatives to partly offset divested earnings from the Russian business.

(3) Additional amortization incurred on inventories in connection with the Berry acquisition

(4) Amortization of acquired intangible assets from business combinations.

(5) Reflects the impact of acquired, disposed, and ceased operations.

# Reconciliations of non-GAAP financial measures

(\$ million)	Three Months Ended June 30, 2024				Three Months Ended June 30, 2025			
	Global Flexible Packaging Solutions	Global Rigid Packaging Solutions	Other	Total	Global Flexible Packaging Solutions	Global Rigid Packaging Solutions	Other	Total
<b>Net income attributable to Amcor</b>				<b>257</b>				<b>(39)</b>
Net income attributable to non-controlling interests				4				—
Tax expense				56				(6)
Interest expense, net				78				125
<b>EBIT</b>	<b>351</b>	<b>73</b>	<b>(29)</b>	<b>395</b>	<b>308</b>	<b>8</b>	<b>(236)</b>	<b>80</b>
Impact of highly inflationary accounting	—	(2)	—	(2)	5	3	—	8
Restructuring and other related activities, net <sup>(1)</sup>	11	4	—	15	29	—	—	29
Berry Transaction & Integration	—	—	—	—	18	10	138	166
Merger related compensation	—	—	—	—	—	—	41	41
Inventory step-up amortization <sup>(2)</sup>	—	—	—	—	27	106	—	133
Other	—	—	5	5	2	11	11	24
Amortization of acquired intangibles <sup>(3)</sup>	41	—	—	41	62	66	2	130
<b>Adjusted EBIT</b>	<b>403</b>	<b>75</b>	<b>(24)</b>	<b>454</b>	<b>450</b>	<b>204</b>	<b>(43)</b>	<b>611</b>
<b>Adjusted EBIT / sales %</b>	<b>15.0 %</b>	<b>8.8 %</b>		<b>12.8 %</b>	<b>14.1 %</b>	<b>10.9 %</b>		<b>12.0 %</b>
<b>Reconciliation of adjusted growth to constant currency growth</b>								
% growth - Adjusted EBIT					12	173	—	35
% currency impact					(1)	—	—	—
<b>% constant currency</b>					<b>11</b>	<b>173</b>	<b>—</b>	<b>34</b>
% constant currency made up of:								
% items affecting comparability <sup>(4)</sup>					12	203	—	44
% from all other sources					(1)	(31)	—	(10)

(1) Fiscal 2025 primarily includes restructuring and other costs related to the integration of the acquired Berry business, and costs attributable to group wide initiatives to partly offset divested earnings from the Russian business.

(2) Additional amortization incurred on inventories in connection with the Berry acquisition.

(3) Amortization of acquired intangible assets from business combinations.

(4) Reflects the impact of acquired, disposed, and ceased operations.

# Reconciliations of non-GAAP financial measures

(\$ million)	Twelve Months Ended June 30, 2024				Twelve Months Ended June 30, 2025			
	Global Flexible Packaging Solutions	Global Rigid Packaging Solutions	Other	Total	Global Flexible Packaging Solutions	Global Rigid Packaging Solutions	Other	Total
<b>Net income attributable to Amcor</b>				<b>730</b>				<b>511</b>
Net income attributable to non-controlling interests				10				7
Tax expense				163				135
Interest expense, net				310				347
<b>EBIT</b>	<b>1,147</b>	<b>185</b>	<b>(119)</b>	<b>1,213</b>	<b>1,162</b>	<b>180</b>	<b>(342)</b>	<b>1,000</b>
Impact of highly inflationary accounting	—	53	—	53	5	11	—	16
Restructuring and other related activities, net <sup>(1)</sup>	79	18	—	97	63	1	—	64
Berry Transaction & Integration	—	—	—	—	18	11	173	202
Merger related compensation	—	—	—	—	—	—	41	41
CEO transition costs	—	—	8	8	—	—	—	—
Inventory step-up amortization <sup>(2)</sup>	—	—	—	—	27	106	—	133
Other	5	—	17	22	12	(4)	13	21
Amortization of acquired intangibles <sup>(3)</sup>	164	3	—	167	172	70	4	246
<b>Adjusted EBIT</b>	<b>1,395</b>	<b>259</b>	<b>(94)</b>	<b>1,560</b>	<b>1,458</b>	<b>375</b>	<b>(110)</b>	<b>1,723</b>
<b>Adjusted EBIT / sales %</b>	<b>13.5 %</b>	<b>7.8 %</b>		<b>11.4 %</b>	<b>13.4 %</b>	<b>9.1 %</b>		<b>11.5 %</b>
<b>Reconciliation of adjusted growth to constant currency growth</b>								
% growth - Adjusted EBIT					5	45	—	11
% currency impact					1	3	—	1
<b>% constant currency growth</b>					<b>5</b>	<b>47</b>	<b>—</b>	<b>12</b>
% constant currency made up of:								
% items affecting comparability <sup>(4)</sup>					3	57		13
% from all other sources					2	(10)		(1)

(1) Fiscal 2025 primarily includes restructuring and other costs related to the integration of the acquired Berry business, and costs attributable to group wide initiatives to partly offset divested earnings from the Russian business.

(2) Additional amortization incurred on inventories in connection with the Berry acquisition.

(3) Amortization of acquired intangible assets from business combinations.

(4) Reflects the impact of acquired, disposed, and ceased operations.

# Reconciliations of non-GAAP financial measures

## Components of Fiscal 2025 Net Sales growth

(\$ million)	Three Months Ended June 30			Twelve Months Ended June 30		
	Global Flexible Packaging Solutions	Global Rigid Packaging Solutions	Total	Global Flexible Packaging Solutions	Global Rigid Packaging Solutions	Total
Net sales fiscal year 2025	3,205	1,877	5,082	10,872	4,137	15,009
Net sales fiscal year 2024	2,686	849	3,535	10,332	3,308	13,640
<b>Reported Growth %</b>	<b>19</b>	<b>121</b>	<b>44</b>	<b>5</b>	<b>25</b>	<b>10</b>
FX %	1	—	1	(1)	(1)	(1)
<b>Constant Currency Growth %</b>	<b>18</b>	<b>121</b>	<b>43</b>	<b>6</b>	<b>26</b>	<b>11</b>
Raw Material Pass Through %	1	—	1	1	(1)	1
Items affecting comparability %	16	129	43	4	31	10
<b>Organic Growth</b>	<b>1</b>	<b>(8)</b>	<b>(1)</b>	<b>1</b>	<b>(4)</b>	<b>—</b>
Volume %	(1)	(4)	(2)	2	(2)	1
Price/Mix %	2	(4)	1	(1)	(2)	(1)