



Asra Minerals Limited
ABN 72 002 261 565
104 Colin Street
West Perth WA 6005
Australia

Phone +61 8 9420 8208
info@asraminerals.com.au
ASX: ASR
asraminerals.com.au

ASX Announcement: 28 March 2025

Date of AGM and Director Nominations

In accordance with ASX Listing Rule 3.13.2 and Section 251AA of the Corporations Act, **Asra Minerals Limited (ASX: ASR; "Asra" or "the Company")** advises, in accordance with ASX Listing Rule 3.13.1, the dates for the Annual General Meeting ("AGM") of the Company and the closing date for receipt of nominations from persons wishing to be considered for election as a director.

The AGM is scheduled to be held on Thursday, 29 May 2025.

All director nominations for election at the AGM are to be received no later than 5.00 pm (WST time) on Friday, 4 April 2025. The Constitution requires nominations be received in writing, signed by the nominee or a Shareholder proposing the nominee, and be submitted to one of the following addresses:

In person: 104 Colin Street, West Perth WA 6005

By mail: 104 Colin Street, West Perth WA 6005

By email: leonard.math@asraminerals.com.au

This announcement has been authorised for release by the Board.

INVESTORS:

Paul Stephen
Chief Executive Officer
Asra Minerals Ltd
info@asraminerals.com.au

MEDIA:

Madeline Howson
Investor Relations
Discovir Investor Relations
madeline@discovir.com.au

Asra Minerals (ASX:ASR) Investment Overview

- 936km² of highly prospective tenure in the world-class Leonora gold region.
- Combined JORC 2012 resources of 200koz at 1.8 g/t Au with large under-explored strike length and resource growth potential.
- Multiple historic gold mines on granted Mining Leases.
- Multiple high-priority drill-ready targets with immediate tenement-wide target generation, refinement and prioritisation program.
- Opportunity to consolidate a significant land package and establish a regionally unique exploration portfolio.

About Asra Minerals Leonora Gold Projects

Asra Minerals' Leonora Gold Project comprises key project areas to the North and South of Leonora in the prolific region of Western Australia's Eastern Goldfields. The projects cover a large area of prospective greenstone belts, with geological similarities to nearby multi-million-ounce gold deposits and operating mines., Asra's substantial exploration position provides a strong foundation for growth and consolidation in this renowned gold region.

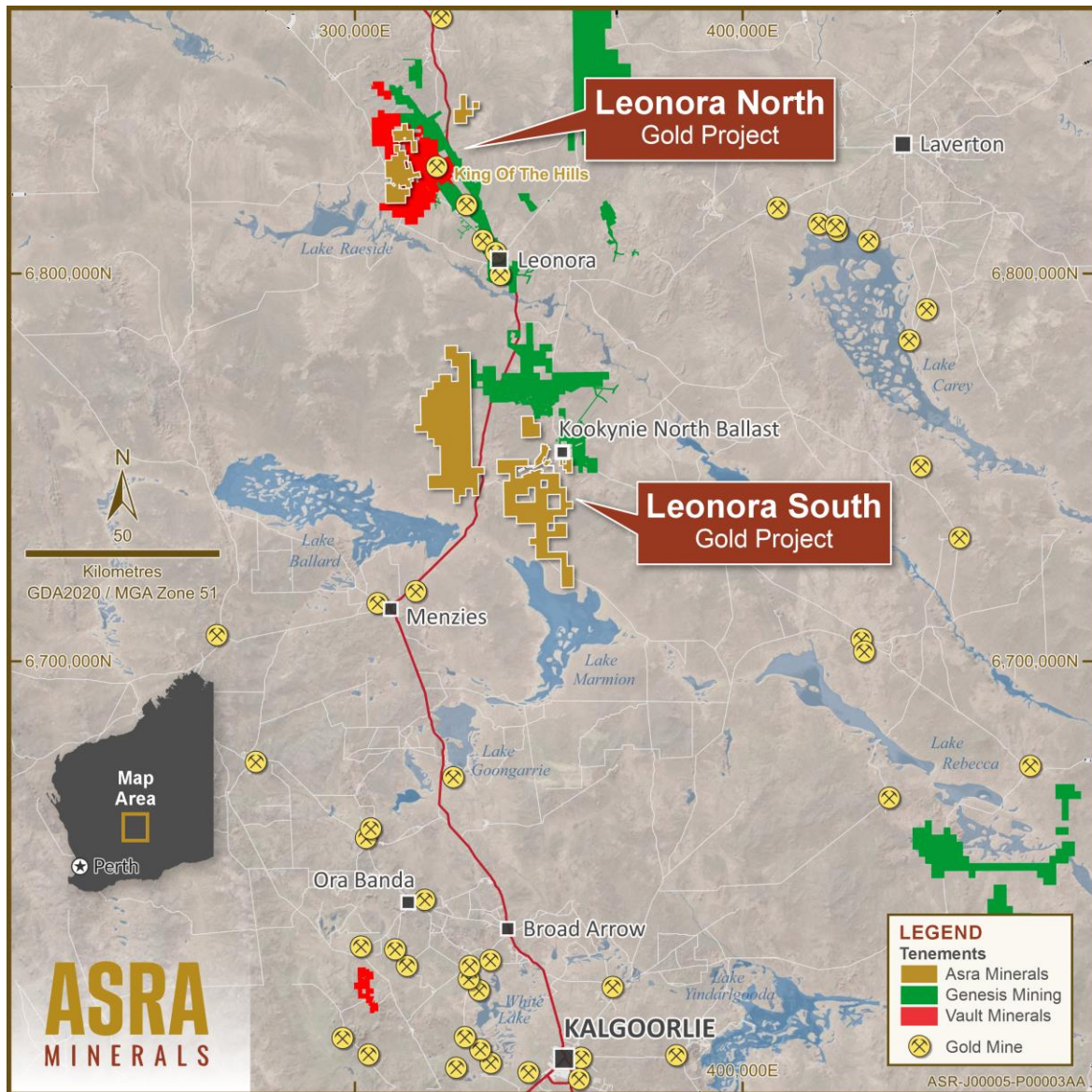


Figure 1: Asra's Leonora Landholdings

Leonora North – Mt Stirling

- Located 40km northeast of Leonora, Western Australia, within a prolific gold mining district.
- Situated in the Eastern Goldfields Super terrane of the Yilgarn Craton, the area is known for orogenic gold deposits.
- Close proximity to significant gold mines, including Vault Minerals' 4Moz King of the Hills mine and Genesis Minerals' 2Moz Leonora and Kookynie operations.
- The ASRA project has two JORC compliant gold resources:
 - Mt Stirling Viserion: 111koz at 1.6g/t Au (inferred)
 - Stirling Well: 15koz at 2.3g/t Au (inferred)
- 12km of prospective ground along the Ursus Fault Line, with 9km yet to be explored.
- Identified targets east of the historic Diorite King Mine, which previously produced gold at high grades.

Leonora South - Kookynie

- Leonora South consists of 8 semi-contiguous mining licences, covering 549 km².
- Located 60km south of Leonora in the Kookynie Goldfields, the area is known for high-grade gold discoveries, including the nearby Ulysses Operation with 850koz Au.
- JORC 2012 Mineral Resource Estimate of 48,000oz at 2.2g/t Au at the Orion-Sapphire Deposit.
- Recent drilling has shown mineralisation extends approximately 30m below previous intercepts, confirming gold grades at depth.
- Asra plans to expand resource estimates at Orion and Sapphire beyond the historical drilling limits of 100-150m below the surface.

Asra Global Gold Mineral Resources

Asra's Gold Projects	Category	Tonnes	Gold Grade g/t Au	Gold Ounces
Leonora North - Viserion	Indicated	391,000	2.1	26,000
	Inferred	2,158,000	1.6	111,000
Leonora North - Stirling Well	Inferred	198,000	2.3	15,000
Leonora South - Niagara - Orion	Inferred	370,000	2.2	26,409
Leonora South - Niagara - Sapphire	Inferred	320,000	2.1	21,605
TOTAL		3,437,000	1.82	200,064

Gold Deposits estimated in accordance with the JORC Code (2012) using 0.5 g/t Au cut-off

Competent Person Statement

The information in this report that relates to Exploration Results is based on information compiled by Mr. John Harris who is a full-time employee of the Company and is a member of the Australian Institute of Geoscientists. Mr. Harris has sufficient experience which is relevant to the style of mineralisation and type of deposit under consideration and to the activity being undertaken to qualify as a Competent Person as defined in the 2012 Edition of the 'Australasian Code for Reporting of Exploration Results, Mineral Resources and Ore Reserves'. Mr. Harris consents to the inclusion in the report of the matters based on his information in the form and context in which it appears.

The Information in this report that relates to the Orion-Sapphire Mineral Resources is based on information compiled by Mr Paul Payne, a Competent Person who is a Fellow of the Australasian Institute of Mining and Metallurgy and is an employee of Payne Geological Services. Mr Payne has sufficient experience that is relevant to the style of mineralisation and type of deposit under consideration and to the activity being undertaken to qualify as a Competent Person as defined in the 2012 Edition of the "Australasian Code for Reporting of Exploration Results, Mineral Resources and Ore Reserves". Mr Payne consents to the inclusion in the report of the matters based on his information in the form and context in which it appears.

Information on the gold JORC Mineral Resources presented for the Mt Stirling Project, together with JORC Table 1 information, is contained in the ASX announcement released on 25 February 2019, 29 January 2020 and 5 September 2022. The Company confirms that it is not aware of any new information or data that materially affects the information in the relevant market announcements, and that the form and context in which the Competent Persons findings are presented have not been materially modified from the original announcements. Where the Company refers to Mineral Resources in this announcement (referencing previous releases made to the ASX), it confirms that it is not aware of any new information or data that materially affects the information included in that announcement and all material assumptions and technical parameters underpinning the Mineral Resource estimate with that announcement continue to apply and have not materially changed. The Company confirms that the form and context in which the Competent Persons findings are presented have not materially changed from the original announcement.

For personal use only