

# ASX Announcement



19 March 2025

## INOVIQ INVESTOR WEBINAR PRESENTATION

**Melbourne, Australia, 19 March 2025:** INOVIQ Limited (ASX:IIQ) (**INOVIQ** or the **Company**) advises that CEO Dr Leearne Hinch will be presenting in the ShareCafe Small Cap “Sip and Learn” Webinar on the 19 March 2025.

The details and link to register for the webinar are provided below:

Date: Wednesday, 19 March 2025  
Time: 11:00 AM AEDT  
Registration: [click the webinar link here](#)

A recorded copy of the webinar will be made available following the event on INOVIQ’s website. The related presentation slides are attached.

Authorised by the Company Secretary, Mark Edwards.

### FURTHER INFORMATION

**Dr Leearne Hinch**  
Chief Executive Officer  
E [lhinch@inoviq.com](mailto:lhinch@inoviq.com)  
M +61 400 414 416

**David Williams**  
Chairman  
E [dwilliams@kidder.com.au](mailto:dwilliams@kidder.com.au)  
M +61 414 383 593

### ABOUT INOVIQ LTD

INOVIQ Ltd (ASX:IIQ) is a biotechnology company pioneering next-generation diagnostics and therapeutics for cancer. INOVIQ has commercialised its fast, efficient and scalable EXO-NET exosome isolation technology for biomarker discovery and diagnostics development, and the hTERT test as an adjunct test for bladder cancer. The company is advancing clinical-stage diagnostics for detection and monitoring of ovarian and breast cancers, and early-stage exosome therapeutics for solid tumours. For more information on INOVIQ, visit [www.inoviq.com](http://www.inoviq.com).

For personal use only

For personal use only



# INOVIQ overview

Next-generation cancer  
diagnostics and therapeutics

**share** cafe

Hidden Gems Webinar

19<sup>th</sup> March 2025

# Important notice and disclaimer



For personal use only

This presentation has been prepared by INOVIQ Limited (“INOVIQ” or the “Company”) based on information available to it as at the date of this presentation. This presentation contains general and background information about the Company’s activities current as at the date of the presentation and should not be considered to be comprehensive or to comprise all the information that an investor should consider when making an investment decision and does not contain all information about the Company’s assets and liabilities, financial position and performance, profits and losses, prospects, and the rights and liabilities attaching to the Company’s securities necessary to make an investment decision. The information in this presentation should be read in conjunction with the Company’s other periodic and continuous disclosure announcements lodged with the Australian Securities Exchange (ASX), available at [www.asx.com.au](http://www.asx.com.au). The information in this presentation is based on the Company’s own information and estimates and has not been independently verified. The Company is not responsible for providing updated information and assumes no responsibility to do so. Any investment in the Company should be considered speculative and there is no guarantee that they will make a return on capital invested, that dividends would be paid, or that there will be an increase in the value of the investment in the future.

This Presentation may contain certain “forward-looking statements” that are based on management’s beliefs, assumptions and expectations and on information currently available to management. The words “expect”, “anticipate”, “estimate”, “intend”, “believe”, “guidance”, “should”, “could”, “may”, “will”, “predict”, “plan” and other similar expressions are intended to identify forward-looking statements. Any indications of, and guidance on, future operating performance, earnings, financial position and performance are also forward-looking statements. Forward-looking statements, opinions and estimates provided in this Presentation are based on assumptions and contingencies which are subject to change without notice, as are statements about market and industry trends, which are based on interpretations of current market conditions.




Actual results, performance or achievements could be significantly different from those expressed in, or implied by, these forward-looking statements. No representation, warranty or assurance (express or implied) is given or made in relation to any forward-looking statement by any person (including INOVIQ or any of its advisers). In particular, no representation, warranty or assurance (express or implied) is given that the occurrence of the events expressed or implied in any forward-looking statements in this Presentation will actually occur. Actual operations, results, performance, targets or achievement may vary materially from any projections and forward-looking statements and the assumptions on which those statements are based.

Nothing contained in this Presentation constitutes investment, legal, tax or other advice. This Presentation does not purport to be all inclusive or to contain all information which its recipients may require in order to make an informed assessment of the Company’s prospects.

You should note that any past performance is given for illustrative purposes only and should not be relied on as (and is not) an indication of the Company’s views on its future financial performance or condition. Past performance, including past share price performance, of INOVIQ cannot be relied on as an indicator of (and provides no guidance as to) future performance including future share price performance.



For personal use only

 Exosome powered Next-gen exosome solutions for earlier detection and treatment of cancer	 Disruptive technology Patented exosome and glycovariant technologies	 Products in market Exosome research tools and bladder cancer test generating revenues
 Deep pipeline Research tools, diagnostics and therapeutics for cancer	 Excellent clinical data Published and in-house data supporting products and pipeline	 Partnering for growth Commercialization via partnering with distributors, clinical laboratories and pharma

- Biotech pioneering **next-generation cancer diagnostics and therapeutics** to enhance patient outcomes
- **Expertise** in exosome science, diagnostics, drug development & commercialization
- Leader in high-growth **exosome market** that is expected to reach US \$6.8 billion by 2032
- Product portfolio includes:
  - ✓ 2 in-market products for **exosome research** and bladder cancer detection
  - ✓ 3 in-development glycovariant and **exosome diagnostics** for detection and monitoring of breast and ovarian cancers
  - ✓ early-stage **CAR-exosome therapeutic** program for solid tumours



For personal use only

### Strategic Focus

**Next-generation exosome diagnostics and therapeutics for cancer**

### Core Technologies



#### Exosome Platform

NETs™ immunoaffinity, magnetic bead-based EV isolation  
EXO-ACE™ affinity chromatography large-scale EV isolation



#### SubB2M Technology

Proprietary neu5Gc probe for improved cancer detection



#### Research Tools

EXO-NET® exosome isolation tools for biomarker discovery and diagnostics



### Pipeline

#### Diagnostics

Exosome tests for screening, liquid biopsies & companion diagnostics  
SubB2M tests for cancer monitoring




#### Therapeutics

Exosome therapeutics to target and kill solid tumours

# Products & pipeline | Multi-stage diagnostics and therapeutics portfolio



For personal use only

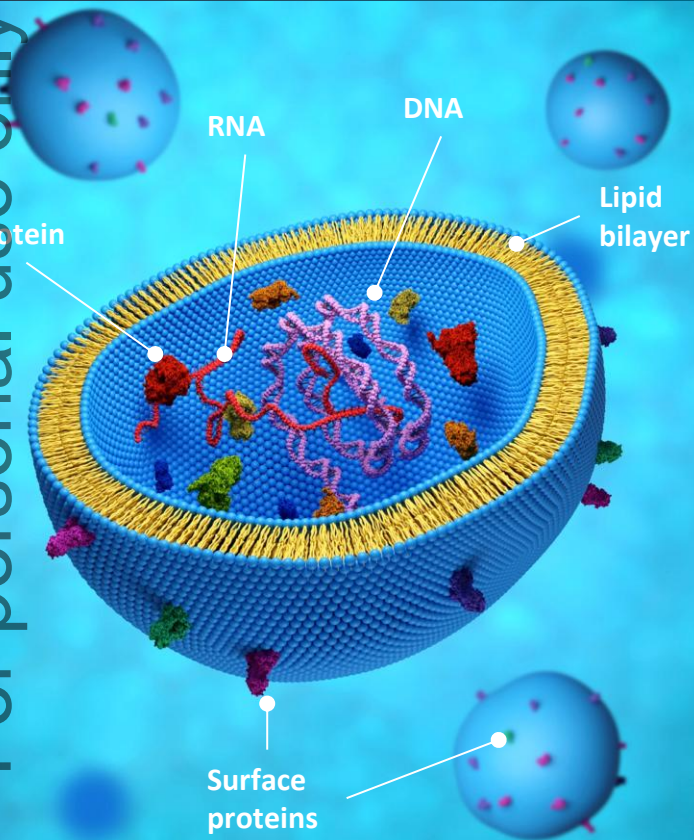
	Product	Indication and Use	Development Stage	Next Milestones (CY)	Market Opportunity
Research Tools	EXO-NET	Biomarker Discovery & Diagnostics Pan EV Capture	In-Market RUO 	Sales Growth & Collaborations	US\$661m
	NEURO-NET	Neurology Diagnostics Brain-Derived EV Capture	Commercial RUO	Collaborations	
	TEXO-NET	Oncology Diagnostics Tumour-Derived EV Capture	Verification RUO	Validation Data 1H25	
Diagnostics	hTERT ICC <sup>1</sup>	Bladder Cancer Adjunct to Cytology	In-Market IVD-Class 1 USA		<US\$20m
	neuCA15-3	Breast Cancer Monitoring	Clinical Validation LDT	In-clinic Monitoring data 2H25	US\$4.3b
	neuCA125	Ovarian Cancer Monitoring	Assay Development LDT	Clinical Validation 2026	
	EXO-OC <sup>2</sup>	Ovarian Cancer Screening	Assay Development IVD	Commence Clinical Validation   2Q25	US\$1.7b
Therapeutics	EEV-001	Breast Cancer CAR-Exosome Therapy	Discovery	In vivo data 2H25	US\$55.3b

**Exosome = EV = Extracellular Vesicles ; ICC = Immunocytochemistry; IVD = In Vitro Diagnostic; LDT = Laboratory-Developed Test; RUO = Research Use Only**

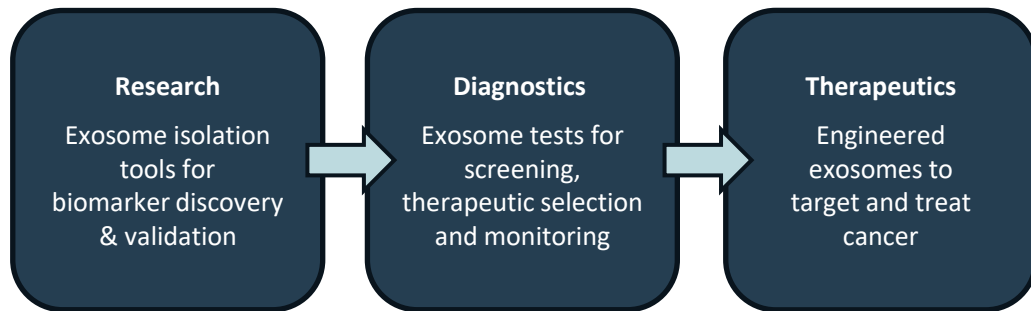
1. Global Exosome Research Market (2021 - 2026) ([researchandmarkets.com](https://www.researchandmarkets.com));
2. Breast Cancer Diagnostics Market Size & Share Report 2030 ([grandviewresearch.com](https://www.grandviewresearch.com));
3. Ovarian Cancer Diagnostics Market Size, Share, Trends | Forecast 2032 ([acumenresearchandconsulting.com](https://www.acumenresearchandconsulting.com));
4. Breast Cancer Therapeutics Market Growth, Trends & Dynamics, 2027 ([fortunebusinessinsights.com](https://www.fortunebusinessinsights.com))



For personal use only



- **Exosomes** are small vesicles released by cells that perform key roles in intercellular communication, immune regulation and disease progression
  - Exosomes carry molecular cargo (**DNA, RNA, proteins and lipids**) that act as cell messengers or biomarkers of disease
  - Exosome biomarkers can be used to develop advanced **diagnostics**
  - Exosomes can be loaded with drugs (small molecules, RNA, other) and engineered for targeted delivery of **therapeutics**
- Significant investment by large pharma and diagnostic companies in exosome products for Oncology, Neurodegenerative, Infectious & Inflammatory diseases
- **INOVIQ's next-gen exosome platform** enables multiple applications



# EXO-NET<sup>®</sup> | Pan-exosome isolation product in-market and generating revenue



For personal use only

Best-in-class **EXO-NET pan-exosome capture** tool (research use only) in-market and generating revenue

Enables **biomarker discovery and diagnostic development** for screening, liquid biopsies and companion diagnostics

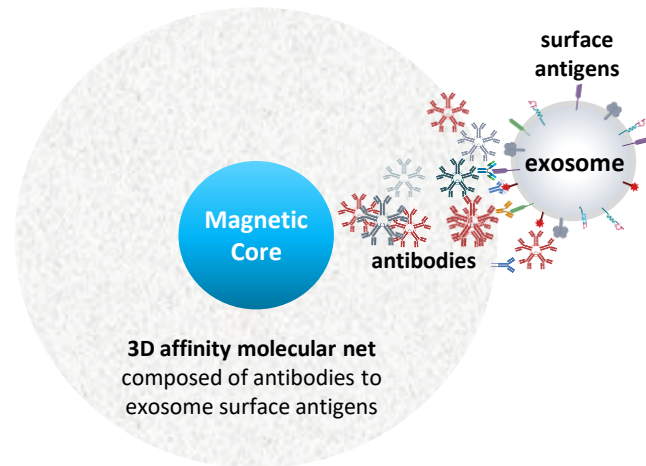
Offers **speed, efficiency and scalability** advantages with over 500 samples/day<sup>1</sup>

**Data published validating EXO-NET** utility in cancer, neurodegenerative, periodontitis, placental and inflammatory diseases<sup>2,3,4</sup>

**Distribution partnership** with Promega Corporation to market and sell EXO-NET to Academic, Biotech/Pharma & Clinical Lab/Hospital customers worldwide

*“[INOVIQ’s] new HT exosome isolation and biomarker analysis solution solves an industry challenge needed to commercialise exosome-based diagnostics.”*

**Tom Livelli, Vice President, Promega**



**3D affinity molecular net** composed of antibodies to exosome surface antigens





For personal use only

Custom **NEURO-NET exosome capture** tool for isolation of brain-derived exosomes

Designed using **proprietary antibody combination** that isolates exosomes secreted from brain cells (neurons, microglia, oligodendrocytes & astrocytes)

**Exosomes cross the “blood-brain barrier”** and provide a “*fingerprint*” of the health or disease status of the brain for *brain cancer, neuropsychiatric disorders and neurodegenerative diseases*

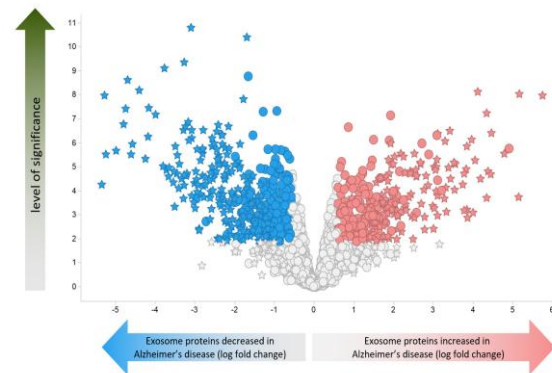
**NEURO-NET analytical and clinical validation studies in Alzheimer’s Disease (AD)<sup>1</sup> and Parkinson’s Disease (PD)<sup>2</sup> show:**

- ✓ NEURO-NET isolates and enriches exosomes from blood that contain proteins expressed by brain cells
- ✓ NEURO-NET was superior to other methods tested for isolating brain-derived exosomes from blood
- ✓ Identified known AD & PD biomarkers not detected by other exosome isolation methods
- ✓ Identified >200 proteins differentially expressed between AD & healthy patients
- ✓ Validated 47 protein biomarkers providing robust discrimination between AD & healthy

*NEURO-NET enables development of exosome diagnostics for neurological conditions. Brain-derived exosomes hold enormous potential for diagnosis and treatment of neurological diseases.*

NEURO-NET identifies differentially-expressed proteins from Alzheimer's Disease plasma

>200 differentially expressed proteins  
47 unique to Alzheimer's Disease





For personal use only

• **EXO-NET customers:** as at 13<sup>th</sup> Feb-25

- **51 total customers:** won in 6.5 months since Aug-24 (> 8/mo) from EU, US and Asia
- **Applications:** Oncology, Neurology, Cardiac Disease, Transplant Rejection, Sepsis & fundamental EV research

**Product Development:**

- **Applications development:** Joint research ongoing to provide validated data to support customers (urine-based workflows, flow cytometry of isolated EVs, and miRNA/mRNA sequencing)
- **Combination products:** Developing EXO-NET/RNA combination products that integrate with Maxwell systems and consumables to provide flexible, scalable solutions for EV isolation & diagnostics

• **Outlook /Future Steps:**

- **Multiple evaluations** of EXO-NET and NEURO-NET for biomarker discovery and diagnostic development
- Successful evaluations are expected to **drive sales of EXO-NET** in exosome diagnostic projects over the next 12-months and underpin revenue growth

Customer type	Profile	#
Academic/ Government	Exosome KOLs validating EXO-NET across expanded applications & delivering <i>publications &amp; presentations</i> . Small-vol biomarker discovery & validation data.	21
Pharma/ Biotech/CRO	Focus on <i>patient selection &amp; monitoring MRD</i> . Mid-vol biomarker discovery, companion diagnostics & target identification.	14
Clinical/ Hospital	Key customers requiring a <i>scalable EV isolation solution</i> . Higher-vol sales as projects progress thru development to registration to market.	16
<b>TOTAL</b>		<b>51</b>



For personal use only

## Collaboration with UQ to develop blood-based exosomal screening test for ovarian cancer<sup>1</sup>

• **UQ<sup>1</sup> OCRF-7 test** developed in a 465-sample retrospective case-control study achieving over **90% accuracy** for detection of stage I / II ovarian cancer in the discovery set<sup>2</sup>

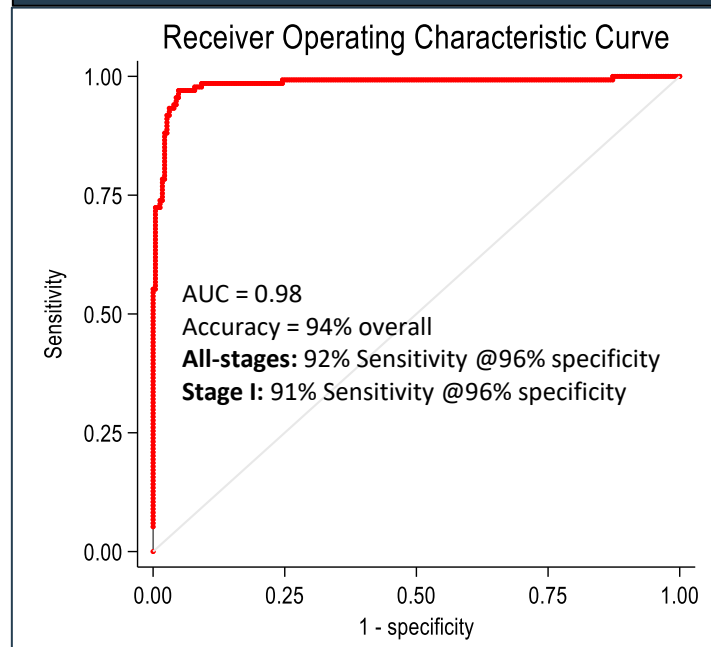
• Exosome isolation initially performed using SEC (not compatible with pathology lab workflow) and **successfully transferred to INOVIQ's HT EXO-NET** exosome isolation technology<sup>3</sup>

• **Biomarker validation study** completed using EXO-NET exosome isolation in 530-sample independent set achieving **overall accuracy of 94%** for detection of OC<sup>4</sup>

• Meets **critical need** for early detection of ovarian cancer to improve treatment options, women's health outcomes and help save lives

• INOVIQ has the **exclusive option to license** the development and commercialisation rights worldwide<sup>5</sup>

ROC analysis of EXO-OC in independent sample set



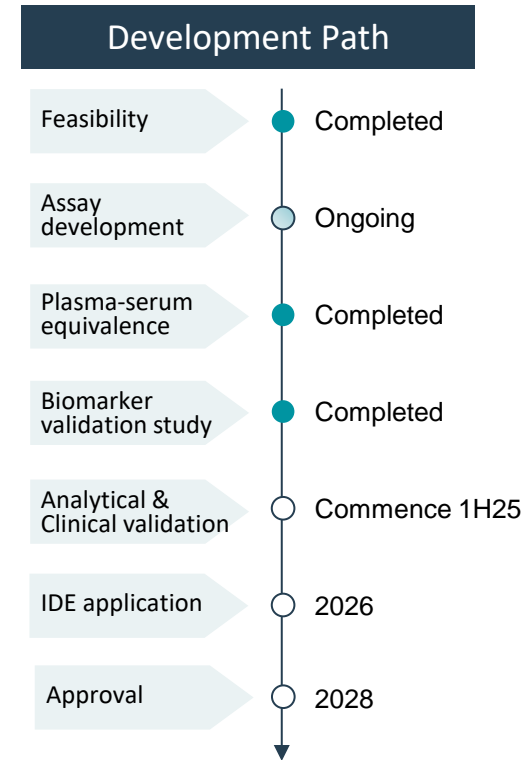
1. The University of Queensland (UQ) (ASX: 1/4/22); 2. Research supported by an Ovarian Cancer Research Foundation (OCRF) grant; 3. Research supported by \$2.7m Medical Research Future Fund (MRFF); 4. Biomarker validation study (ASX: 3/12/24); 5. INOVIQ-UQ Umbrella Research & Option Agreement

# Ovarian Cancer screening test | Path-to-market



For personal use only

Ovarian Cancer	<ul style="list-style-type: none"><li>• #8 cancer in women &amp; <b>deadliest gynaecological cancer</b></li><li>• 314k new cases of ovarian cancer worldwide pa<sup>1</sup></li><li>• 0.25% of population has Hereditary Breast and Ovarian Cancer syndrome<sup>2</sup></li></ul>
Unmet Medical Need	<ul style="list-style-type: none"><li>• <b>No approved test for early detection</b> of ovarian cancer in asymptomatic, average-risk women</li><li>• <b>Earlier and more accurate tests</b> required for screening ovarian cancer</li></ul>
Market Potential	<ul style="list-style-type: none"><li>• <b>US\$1.7b</b> global ovarian cancer diagnostics market<sup>2</sup></li><li>• <b>US\$323m TAM</b> for OC high-risk screening twice yearly<sup>3</sup></li></ul>
Test & Data	<ul style="list-style-type: none"><li>• <b>Exosome multi-marker test</b> validated in a 530-sample retrospective case-control study with <b>overall 94% accuracy and 92% sensitivity at 96% specificity</b> for detection of OC across all stages &amp; <b>91% sensitivity at 96% specificity for stage 1</b> alone<sup>4</sup></li></ul>
Intended Use	<ul style="list-style-type: none"><li>• <b>Screening</b> to detect ovarian cancer in asymptomatic high-risk women</li></ul>
Go-to-Market Strategy	<ul style="list-style-type: none"><li>• IVD-MIA regulatory strategy (PMA process) with US FDA</li><li>• <b>License</b> to large diagnostics / laboratory company</li></ul>





For personal use only

INOVIQ is developing **weaponised exosomes** engineered to target and kill solid tumours

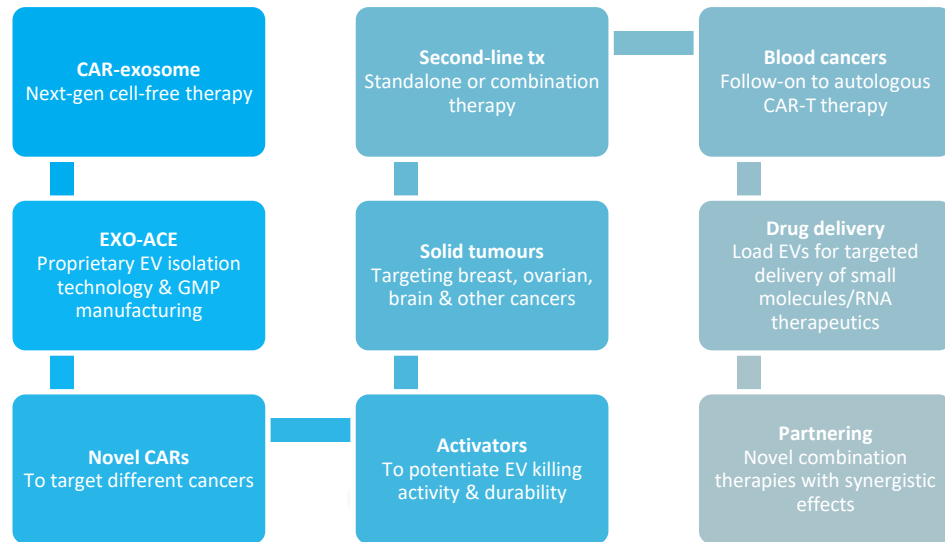
Next-gen “off-the shelf” cell-free therapy for **solid tumours**

The therapeutic effects of **Cell Therapy** are mediated by exosomes interacting with host cells

**Cell-Free Therapies** can be developed using exosomes isolated from allogenic MSC, T cells or NK cells grown *in vitro*

CAR-exosomes inherit the **targeting and cytotoxic properties** of their parent cells to target and kill cancer

Potential **safety, efficacy and cost advantages** over autologous CAR-T therapy

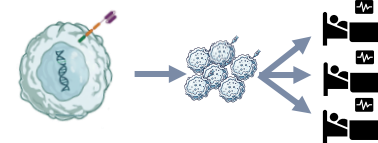




For personal use only



- ✓ **Improved safety profile** due to reduced GvHD (immune rejection), CRS & secondary tumours as EVs don't replicate in the body
- ✓ **Improved efficacy** in solid tumours due to ability to infiltrate TME based on nano-size ( $10^{-9}$ )
- ✓ **Multiple doses** and/or CAR-T follow-on or combination therapy
- ✓ Continuous manufacturing from immortalised cells enables **off-the-shelf** (allogeneic) therapy for any patient
- ✓ Fast patient logistics and time-to-dose of **~1 week**
- ✓ **Reduced manufacturing** and supply chain costs
- ✓ **Lower treatment cost** benefiting patients & healthcare system



## Clinical need & INOVIQ's CAR-EV targets

- Cancers for which there are no targeted therapies (TNBC)
- Cancers where Cell Therapy has limited access (glioblastoma)



For personal use only

CAR-EVs inherit the targeting and cytotoxic properties of their parent CAR-T or CAR-NK cells

CAR-EVs are produced by CAR-T/NK cells

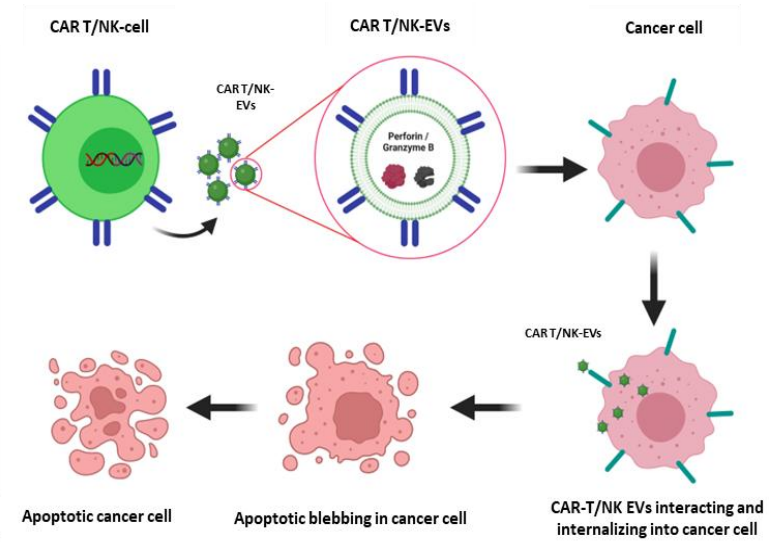
CAR-EVs contains catalytic proteins (perforin and granzyme B)

CAR-EVs interact and internalise into cancer cell

Catalytic proteins from CAR-EVs induce cancer cell death (apoptosis)

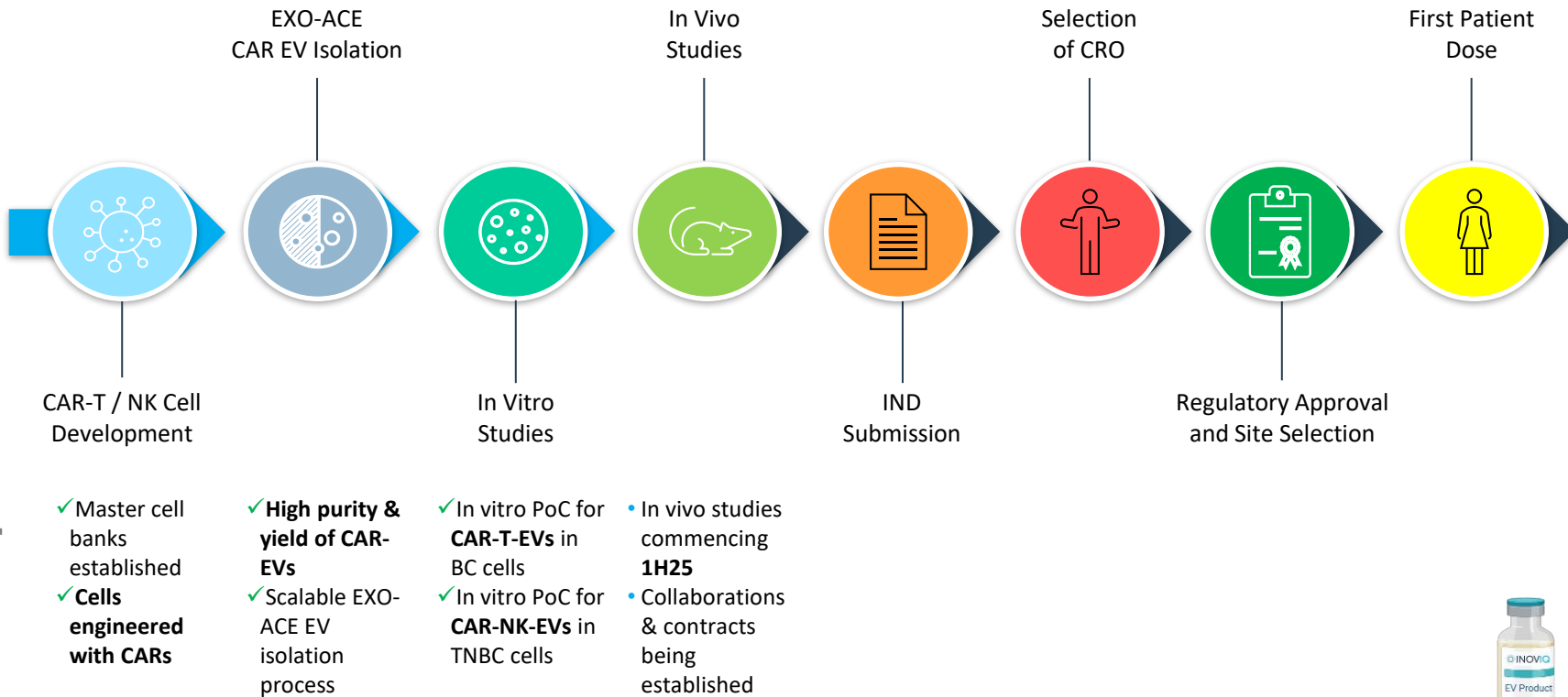
CAR-EVs for drug delivery

RNA and small molecules for combination therapy





For personal use only







For personal use only

**Aberrant glycosylation** (production of sugars) is a hallmark of cancer

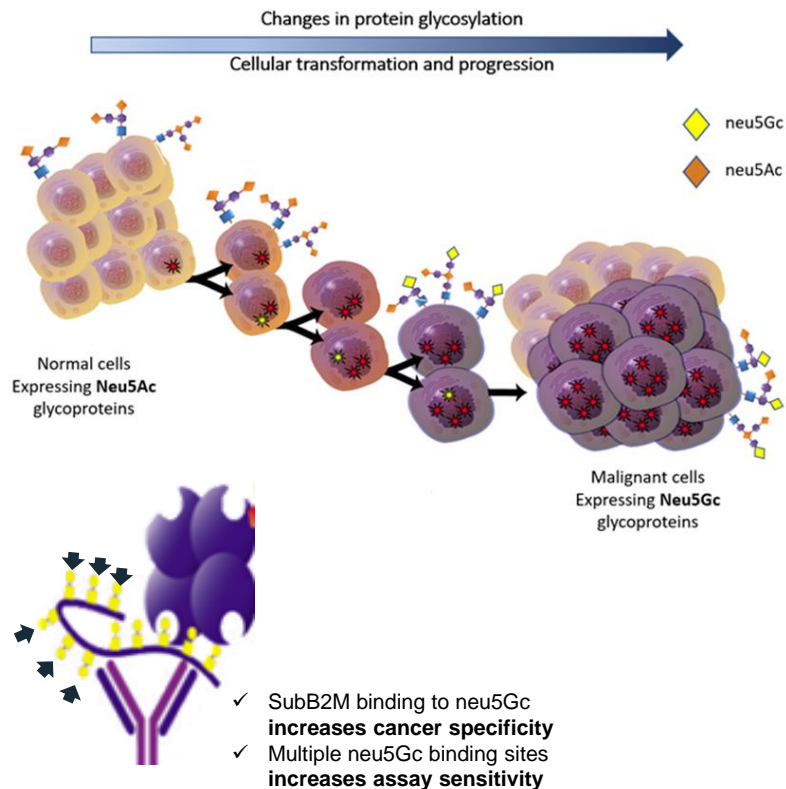
**Neu5Gc** is a sugar commonly found on cancer cells, but not healthy cells

**SubB2M** is an engineered protein that specifically binds neu5Gc

SubB2M is used in an **immunoassay format** to measure protein cancer biomarkers

**Improves sensitivity and specificity** for cancer detection (e.g. breast, ovarian, prostate, pancreatic & others)

**Clinical applications** for monitoring cancer treatment response and recurrence, general health assessment or high-risk screening



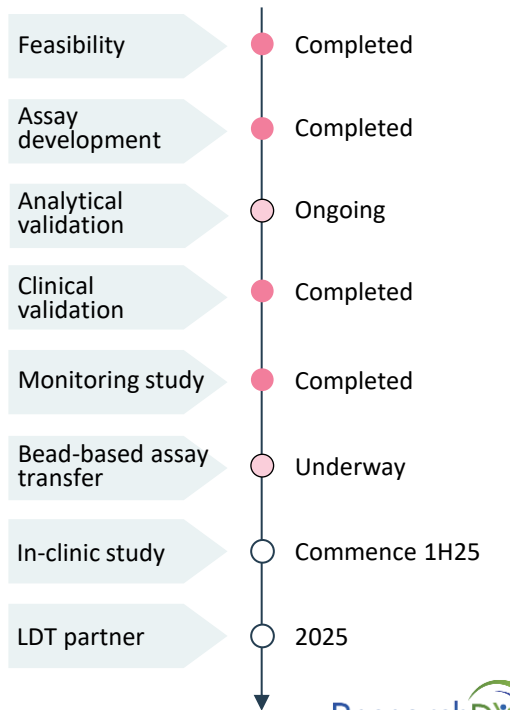
# Breast Cancer monitoring test | Path-to-market



For personal use only

Breast Cancer	<ul style="list-style-type: none"> <li>• <b>#1 cancer in women</b></li> <li>• 2.3m new cases of breast cancer worldwide pa<sup>1</sup></li> <li>• 7.8m survivors (5-year)<sup>1</sup></li> </ul>
Unmet Medical Need	<ul style="list-style-type: none"> <li>• <b>Non-invasive, earlier and more accurate tests</b> required for monitoring breast cancer recurrence</li> <li>• <b>10-40%</b> of <b>breast cancers recur</b> within 5 years</li> </ul>
Market Potential	<ul style="list-style-type: none"> <li>• <b>US\$4.3b</b> global breast cancer diagnostics market<sup>2</sup></li> <li>• <b>US\$668m TAM</b> for breast cancer monitoring<sup>3</sup></li> </ul>
Test & Data	<ul style="list-style-type: none"> <li>• <b>NeuCA15-3 immunoassay</b> detects CA15-3 cancer marker bound to neu5Gc<sup>4</sup> to improve cancer specificity and sensitivity over existing CA15-3 test</li> <li>• <b>81% sensitivity and 93% specificity</b> for BC detection across all stages</li> <li>• Detects key BC subtypes incl. <b>HR+, HER2+ and TNBC &amp; effective BC monitoring</b></li> </ul>
Intended Use	<ul style="list-style-type: none"> <li>• Aid in <b>monitoring</b> breast cancer treatment response and recurrence</li> </ul>
Go-to-Market Strategy	<ul style="list-style-type: none"> <li>• <b>LDT</b> to IVD regulatory strategy (510k / De Novo process) with US FDA</li> <li>• <b>Partner</b> LDT with CLIA-accredited laboratory</li> <li>• <b>Licence</b> IVD to large diagnostics company</li> </ul>

## Development Path



510k = FDA clearance for Class II device; CLIA = Clinical Laboratory Improvement Amendments (high-complexity tests); IVD = In Vitro Diagnostic; LDT = Laboratory Developed Test; 1. <https://qco.iarc.fr/today/home>; 2. [Breast Cancer Diagnostics Market Size & Share Report 2030 \(grandviewresearch.com\)](https://www.grandviewresearch.com/industry-analysis/Breast-Cancer-Diagnostics-Market-Size-Share-Report-2030); 3. Based on 4.5m tests pa @\$150/test for BC monitoring in US, EU5 and AU; 4. Neu5Gc = the sialic acid, N-glycolylneuraminic acid



# SubB2M Breast Cancer clinical data | Outperformed leading CA15-3 test



For personal use only

## Clinical Validation Study by Stage (2023)<sup>1</sup>

Retrospective, case-control, **clinical validation study** (n=483) to evaluate breast cancer detection by stage

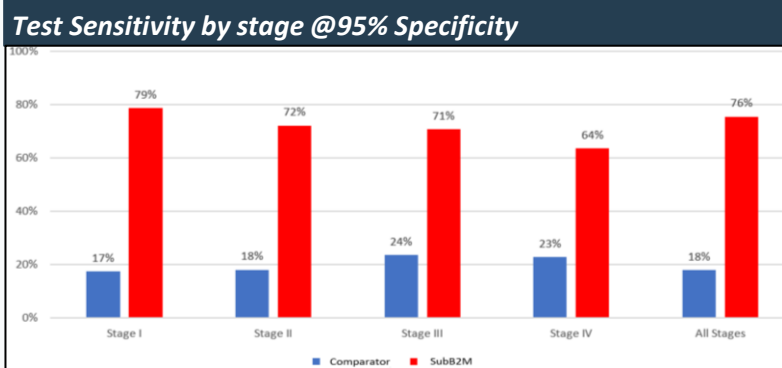
- ✓ Detected **all stages** of breast cancer with high accuracy (I - IV)
- ✓ Detected **common breast cancer types** (IDC and ILC)
- ✓ **Significantly outperformed a leading CA15-3 test** (Roche Elecsys<sup>®</sup> CA15-3 II)

## Monitoring Study (2024)<sup>2</sup>

Retrospective, longitudinal, 2-arm **monitoring study** (n=277) to evaluate SubB2M CA15-3 test compared to Roche Elecsys<sup>®</sup> CA15-3 II (comparator)

- ✓ Detected main **breast cancer subtypes** (HR+, HER2+ and TNBC)<sup>3</sup> (n=159 pre-treatment samples)
- ✓ Established **equivalence for BC monitoring** (n=12 patients)
- ✓ Outperformed comparator identifying **19% more breast cancers**

SubB2M CA15-3 vs Leading Existing Test		
Breast Cancer All Stages	SubB2M CA15-3	Roche Elecsys CA15-3 II
AUC	0.93	0.70
sensitivity	81%	37%
specificity	93%	88%
false negative rate	19%	63%
false positive rate	7%	12%
overall accuracy	87%	63%



Breast cancer (n=241: I=75, II=72, 3=72, III=72, IV = 22) and healthy controls (n=242)

# Summary | Positioned for growth



For personal use only



Proprietary **exosome platform** with multiple research, diagnostic and therapeutic applications



**Global distribution partner** for EXO-NET research tools to drive revenue growth



Multiple **evaluations** underway for EXO-NET / NEURO-NET exosome isolation, biomarker discovery and diagnostics



Clinically validated **SubB2M BC test** advancing to commercialisation



**Pipeline** of advanced diagnostics and high-value therapeutics for cancer

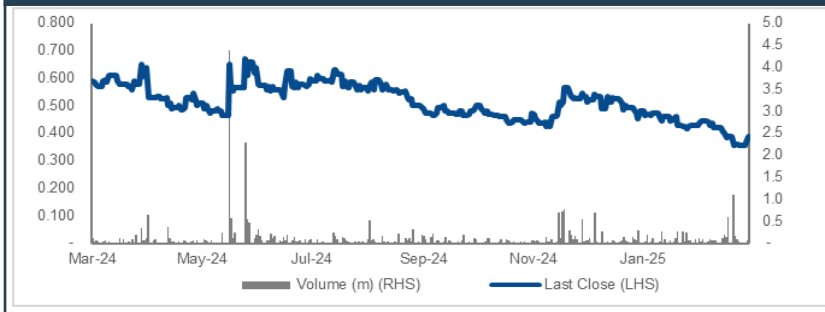


Leadership team with proven experience in **exosome science, development and commercialisation**

## Financial information (ASX:IIQ)

Ordinary shares <sup>1</sup>	111,526,702
Listed / Unlisted options <sup>1</sup>	9,753,913 / 8,791,667
52-week H/L <sup>1</sup>	A\$0.80-0.345
Share price <sup>1</sup>	A\$0.39
Market capitalisation <sup>1</sup>	A\$43.5m
Cash at bank <sup>2</sup>	A\$9.48m
Major shareholders (as at 12 December 2024)	
Merchant Funds Management	10.5%
Biotech Capital Management	6.4%
David Williams	4.5%

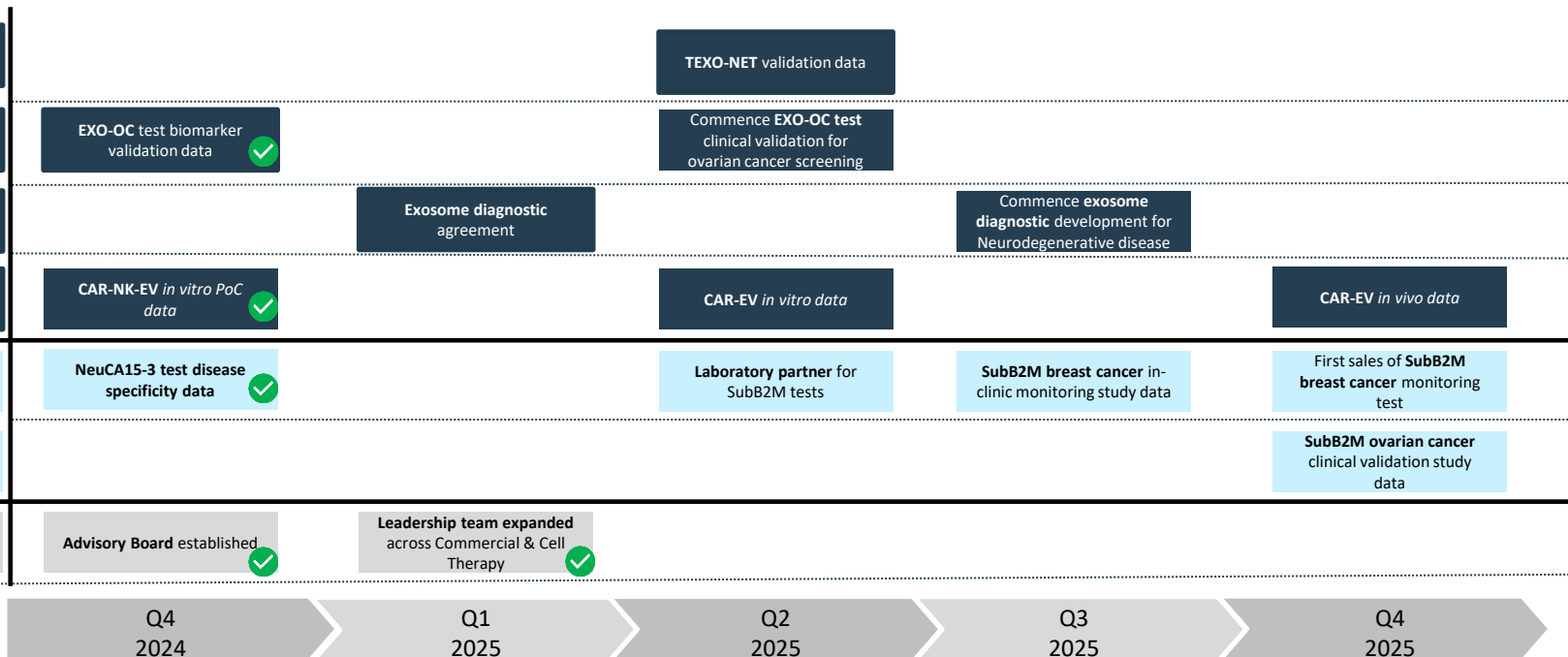
## IIQ 12-month share price performance<sup>1</sup>



# Future catalysts | Developing better healthcare solutions



For personal use only





**Dr Leearne Hinch BVMS MBA**  
Chief Executive Officer  
e. [lhinch@inoviq.com](mailto:lhinch@inoviq.com)

# Board & Management | Corporate, scientific and commercial expertise



**DAVID WILLIAMS**  
Non-Executive Chairman

Experienced biotechnology director and investment banker with extensive strategic, corporate and financial markets experience.

Currently Chairman PolyNovo Ltd, Chairman of RMA Global Ltd and Managing Director of corporate advisory firm Kidder Williams Ltd.

Previously Chairman and major shareholder Medical Developments International Ltd. Major shareholder Healthily Pty Ltd.



**DR GEOFF CUMMING**  
Non-Executive Director

Healthcare and biotechnology director with extensive diagnostics industry experience.

Currently NED AnteoTech Ltd.

Previously Managing Director Roche Diagnostic Systems (Oceania), MD/CEO Biosceptre international Ltd and MD/CEO of Anteo Diagnostics Ltd.



**MAX JOHNSTON**  
Non-Executive Director

Healthcare industry director and international business leader with extensive experience across medtech, pharmaceuticals, consumer healthcare and consumer goods.

Currently NED Neurotech International. Previously President and CEO of Johnson & Johnson Pacific, Chairman of AusCann Ltd, NED of PolyNovo Ltd, Medical Developments International Ltd, Tissue Repair Ltd and CannPal Animal Therapeutics Ltd.



**PHILIP POWELL**  
Non-Executive Director

Healthcare industry director and chartered accountant with extensive investment banking experience specialising in capital raisings, IPOs, mergers and acquisitions and other transactions across pharma, food and agriculture.

Previously at OAMPS Ltd and Arthur Andersen, and NED at RMA Global Ltd, Polynovo Ltd and Medical Developments International Ltd.



**MARY HARNEY**  
Non-Executive Director

Experienced Non-Executive Director and Chief Executive bringing a deep understanding of applied life science research, in addition to experience in biopharmaceutical regulatory affairs and commercialisation.

Current Chair of Oncology One Pty Ltd. Previously Chair of Race Oncology (ASX: RAC) and Microbio Limited.



**DR LEEARNE HINCH** BVMS MBA  
Chief Executive Officer

Biotechnology CEO with a proven track record in corporate strategy, capital raising, product development, business development and partnering across diagnostics, medical devices, therapeutics and animal health.

Past leadership and consulting roles in ASX-listed biotechnology, multinational and private companies including Eustralis Pharmaceuticals, HealthLinX, OBJ, Holista Colltech, Chemeq, Virbac and Mars.



**DR GREG RICE** PhD MHA  
Chief Scientific Officer

Internationally recognised, award-winning scientist with over 35 years' experience and a successful track record in oncology research, exosome science, biomarker discovery, and diagnostics development.

Previous leadership roles in academia and industry including at The University of Queensland Centre for Clinical Research, Baker Heart Institute, University of Melbourne, Monash University and HealthLinX.



**MARK EDWARDS** BAcc CA  
CFO & Company Secretary

Experienced finance executive with expertise in financial leadership and management, corporate governance, investor relations and corporate transactions.

Previous senior roles in ASX listed pharmaceutical, medical device and healthcare companies, including Medical Developments International and Cogstate.



**EMMA BALL** PhD MBA GAICD  
Chief Commercial Officer  
Commences 22 Apr-25

Experienced biotechnology commercialisation executive with expertise in business development, licensing, and strategic partnerships across therapeutics, vaccines and diagnostics.

Currently Non-Executive Chair of BioMelbourne Network. Previous senior business development/ licensing roles in multinational biotechnology companies CSL Ltd and Illumina Inc.



For personal use only



For personal use only



**PROF MILES PRINCE AM**  
Clinical Haematologist & Oncologist

Leading Clinical Haematologist and Oncologist and Professor at both Melbourne and Monash universities. He is an NHMRC Investigator Fellow and has been principal investigator of over 100 clinical trials including targeted therapeutics (CAR-T therapy) for haematological conditions and cancers.



**PROF PHIL DARCY**  
Principal Research Fellow

Group Leader of the Cancer Immunotherapy Laboratory at the Peter MacCallum Cancer Centre and NHMRC Principal Research Fellow, focusing on novel T cell-based immunotherapy approaches for cancer in preclinical mouse models and clinical translation.



**PROF CARLOS SALOMON**  
NHMRC Investigator Fellow

Director of the University of Queensland Centre for Extracellular Vesicle Nanomedicine, Head of the Translational Extracellular Vesicles in Obstetrics and GynaeOncology Group and NHMRC Investigator Fellow, specialising in exosome biology and its clinical translation to diagnostics and therapeutics for ovarian cancer and obstetrical syndromes.



**DR JAMES MCCRACKEN**  
Medical Oncologist

Leading Medical Oncologist specialising in breast cancer treatment at Epworth Healthcare and the Peter MacCallum Cancer Centre. His research interests include the field of liquid biopsies for cancer to personalise treatment and minimise toxicity.