



MITHRIL
Silver and Gold

PDAC Toronto, 2-5 March, 2025

Exploring one of the highest-grade gold-silver districts in Mexico's prolific Sierra Madre Gold-Silver Trend

Fully Funded 35,000 metres drilling in 2025

ASX:MTH
TSXV:MSG

Disclaimer

The release, publication or distribution of this presentation in certain jurisdictions may be restricted by law and therefore persons in such jurisdictions into which this presentation is released, published or distributed should inform themselves about and observe such restrictions.

DISCLAIMER

This presentation is for informational purposes only and does not constitute an offer to sell, or solicitation to purchase, any securities. Such Offer can be made only through proper subscription documentation and only to investors meeting strict suitability requirements. Any failure to comply with these restrictions may constitute a violation of applicable securities laws. In providing this presentation Mithril Resources Limited ACN 099 883 922 (“MTH”) has not considered the financial position or needs of the recipient. Persons needing advice should consult their stockbroker, bank manager, solicitor, attorney, accountant or other independent financial and legal advisors.

FORWARD LOOKING STATEMENTS

Various statements in this presentation constitute statements relating to intentions, future acts and events. Such statements are generally classified as “forward looking statements” and involve known and unknown risks, uncertainties and other important factors that could cause those future acts, events and circumstances to differ materially from what is presented or implicitly portrayed herein. Words such as “anticipates”, “expects”, “intends”, “plans”, “believes”, “seeks”, “estimates” and similar expressions are intended to identify forward-looking statements. MTH caution shareholders and prospective shareholders not to place undue reliance on these forward- looking statements, which reflect the view of MTH only as of the date of this presentation. The forward-looking statements made in this presentation relate only to events as of the date on which the statements are made.

The information in this presentation that relates to Mineral Resources or Ore Reserves is based on information provided in the following ASX announcement: 17 Nov 2021 - MAIDEN JORC RESOURCE 529,000 OUNCES @ 6.81G/T (AuEq*), which includes the full MRE report, also available on the Mithril Resources Limited Website.

The Company confirms that it is not aware of any new information or data that materially affects the information included in the original market announcement and that all material assumptions and technical parameters underpinning the estimates in the relevant market announcement continue to apply and have not materially changed. The company confirms that the form and context in which the Competent Person’s findings are presented have not been materially modified from the original market announcement.

This presentation contains information extracted from previous ASX releases which are referenced in the presentation. The Company is not aware of any new information or data that materially affects the information included in the original market announcements.

ASX Releases with more details regarding information in this presentation:

3 Mar 2025	Mithril Drills 20.5 g/t Gold, 1,833 g/t Silver Over 4.95m
31 Jan 2025	Quarterly Activities/Appendix 5B Cash Flow Report
23 Jan 2025	TARGET 1 EXPANSION ASSAYS UP TO 438 G/T SILVER 7.88 G/T GOLD
10 Dec 2024	PROGRESS AND DISTRICT EXPLORATION EXPANSION, COPALQUIN
28 Oct 2025	\$12.5M PLACEMENT, EXPLORATION SHIFTS TO HIGH-GEAR
22 Oct 2024	UP TO 736 G/T SILVER, 8.99 G/T GOLD IN CHANNEL SAMPLES
18 Oct 2024	ASSAYS UP TO 997 G/T SILVER, 28 G/T GOLD
26 Sep 2024	Dual Listing on TSX Venture Exchange
20 Sep 2024	MTH Drills 144 g/t Gold, 1,162 g/t Silver over 7.0 metres
18 Aug 2024	MTH Drills 17.95 Metres at 5.16 g/t Gold and 78.0 g/t Silver
30 Jul 2024	Quarterly Activities/Appendix 5B Cash Flow Report
12 Jun 2024	High Grade Diamond Saw Assays Expand Drill Targets
30 May 2024	Drill Programme Restart at Copalquin
30 Apr 2024	Quarterly Activities Report and Appendix 5B
30 Jan 2024	Quarterly Activities Report and Appendix 5B
31 Oct 2022	Quarterly Activities Report and Appendix 5B
13 Oct 2022	Depth Potential Confirmed - El Refugio, Copalquin District
18 Aug 2022	High-Grade Intercepts at El Refugio, Copalquin
29 Jul 2022	Quarterly Activities Report and Appendix 5B
27 Jul 2022	Continued High-Grade Drilling at El Refugio, Copalquin
05 Jul 2022	Expansive Deep Drilling Success at El Refugio, Copalquin
05 May 2022	EXPLORATION CONTINUES TO EXPAND, COPALQUIN DISTRICT, MEXICO
01 Mar 2022	MINING CONCEPTS STUDY COMPLETED – COPALQUIN
25 Feb 2022	FURTHER EXCELLENT METALLURGY RESULTS
18 Jan 2022	Exploration & Metallurgy Results - Copalquin District Mexico
17 Nov 2021	MAIDEN JORC RESOURCE 529,000 OUNCES @ 6.81G/T (AuEq*)

**The gold equivalent (AuEq.) values given in this presentation are determined from gold and silver values and assume the following: AuEq. = gold equivalent calculated using and gold:silver price ratio of 70:1. That is, 70 g/t silver = 1 g/t gold. The metal prices used to determine the 70:1 ratio are the cumulative average prices for 2021: gold USD1,798.34 and silver: USD25.32 (actual is 71:1) from kitco.com. Metallurgical recoveries are assumed to be approximately equal for both gold and silver at this early stage. Actual metallurgical recoveries from test work to date are 96% and 91% for gold and silver, respectively. In the Company’s opinion there is reasonable potential for both gold and silver to be extracted and sold.*

For personal use only

DISTRICT
SCALE

- **70km² district with 298 historic mines and workings**
- **multiple targets, large epithermal system**
- **over 10km of mine tunnels and 15km of known veins**

HIGH
GRADE

- **Maiden Resource Target 1 – Ind. & Inf. 529 koz AuEq (37 moz AgEq)⁺**
- **6.8 g/t AuEq (~500 g/t AgEq)⁺**

DERISKING

- **high process recoveries 96% gold and 91% silver**
- **underground mineable, close to infrastructure**

UPSIDE

- **aim to double Target 1 resource in 2025**
- **advance 2 similar sized target areas in 2025**
- **define system responsible for widespread silver and gold**

High-Margin Business - Mexican Silver & Gold

+ Indicated 157koz + inferred 372koz AuEq. See maiden resource slide for details

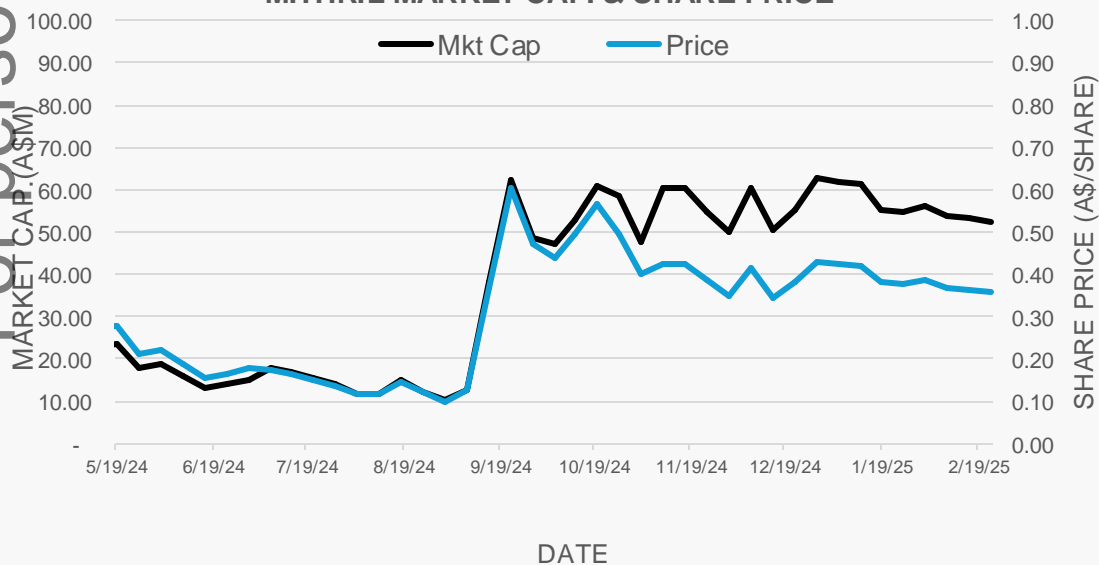


CORPORATE OVERVIEW

Codes	ASX:MTH TSXV:MSG
Shares on Issue	145.7m
Options (listed)*	24.7m
Options (unlisted)*	33.4m
Cash (Dec. 2024)	A\$16.7m

MTH ASX HISTORY

MITHRIL MARKET CAP. & SHARE PRICE

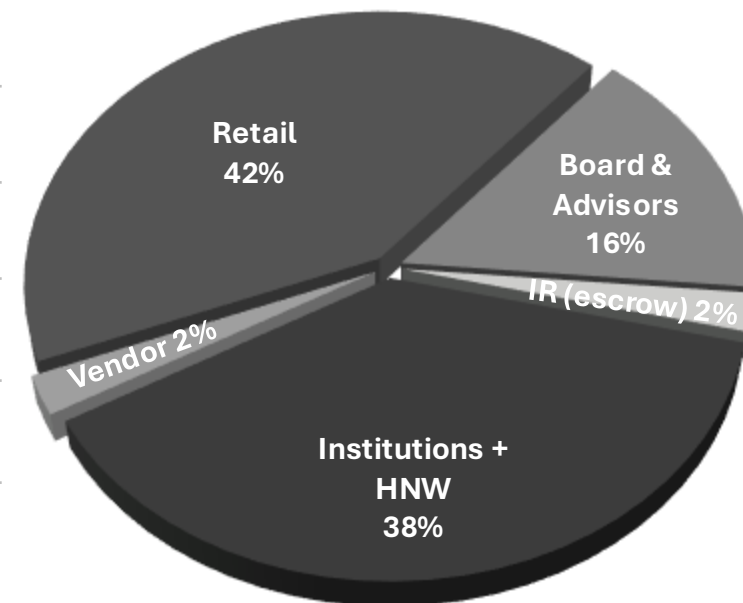


*Options @\$0.20, 2yrs (listed) – 24.7m; Options @\$0.10, 3yrs (unlisted) – 7.5m; Options @\$0.20, 3yrs (director, advisor unlisted) – 3.1m; Options @\$0.30, 2yrs – 6.4m; Options @\$0.70, 12/25 – 2.14m; Options @\$1.50, 11/25 – 0.25m; Options @\$0.75, 12/26 – 14m

MAJOR SHAREHOLDERS

Jupiter Gold & Silver Fund	16.1%
1832 Asset Management L.P.	8.0%
Lowell Resources Fund	1.8%
Dundee Corporation	1.5%
Board, Advisors, Vendor and IR	20%
Top 20	58%

OWNERSHIP



Company snapshot



For personal use only



JOHN SKEET *CEO and Managing Director*

- mine builder in FSU, Australia and Mexico
- 20 years experience in Mexico; Palmarejo, Ocampo, Cerro del Gallo, Copalquin



GARRY THOMAS *Non-Executive Director*

- civil engineer with +35 years experience in civil construction, mine development and operations in Australia, Indonesia, Laos, Russia, Africa, and Mexico (Palmarejo)



COLIN JONES *Technical Advisor*

- highly experienced and well-regarded geologist with +40 years experience
- co-founder and Principal Consulting Geologist with Orimco in Perth



SIMON CATT *Corporate Advisor*

- director of Arlington Group Asset Management Ltd
- +20 years of investment banking experience across equity sales and corporate finance in London
- GMP Securities Europe, which he founded in 2007



CRAIG SHARPE *Non-Executive Chairman*

- B. Comm in Economics and Finance, MBA and graduate of the AICD
- +25 years of experience in equity capital markets



STEPHEN LAYTON *Non-Executive Director*

- Master Practitioner Member of the Stockbrokers and Investment Advisors Association – MSIAA
- +35 years experience in equity capital markets in UK and Australia



David Toyoda *Independent and Non-Executive Director*

- Principal of Pacific Star Corporate Finance Law in corporate and securities law
- director of three public companies and two private companies in process of going public



JUSTYN STEDWELL *Company Secretary*

- B. Comm, Grad. Dips. Accounting & Corp. Governance
- +17 years company secretary of ASX listed co's and served as a non-exec. director on several ASX company Boards

Board, Management and Advisors

REGIONAL DISTRICTS ARE LARGE AND LONG LIVED



For personal use only

Mexico is world's #1 producer of silver, accounting for 25% of production

Nearby Mines:

- San Julian, Fresnillo
- La Cienega, Fresnillo
- Guanacevi, Endeavour Silver
- Topia, Guanajuato Silver
- Tahuehueto, Luca Mining

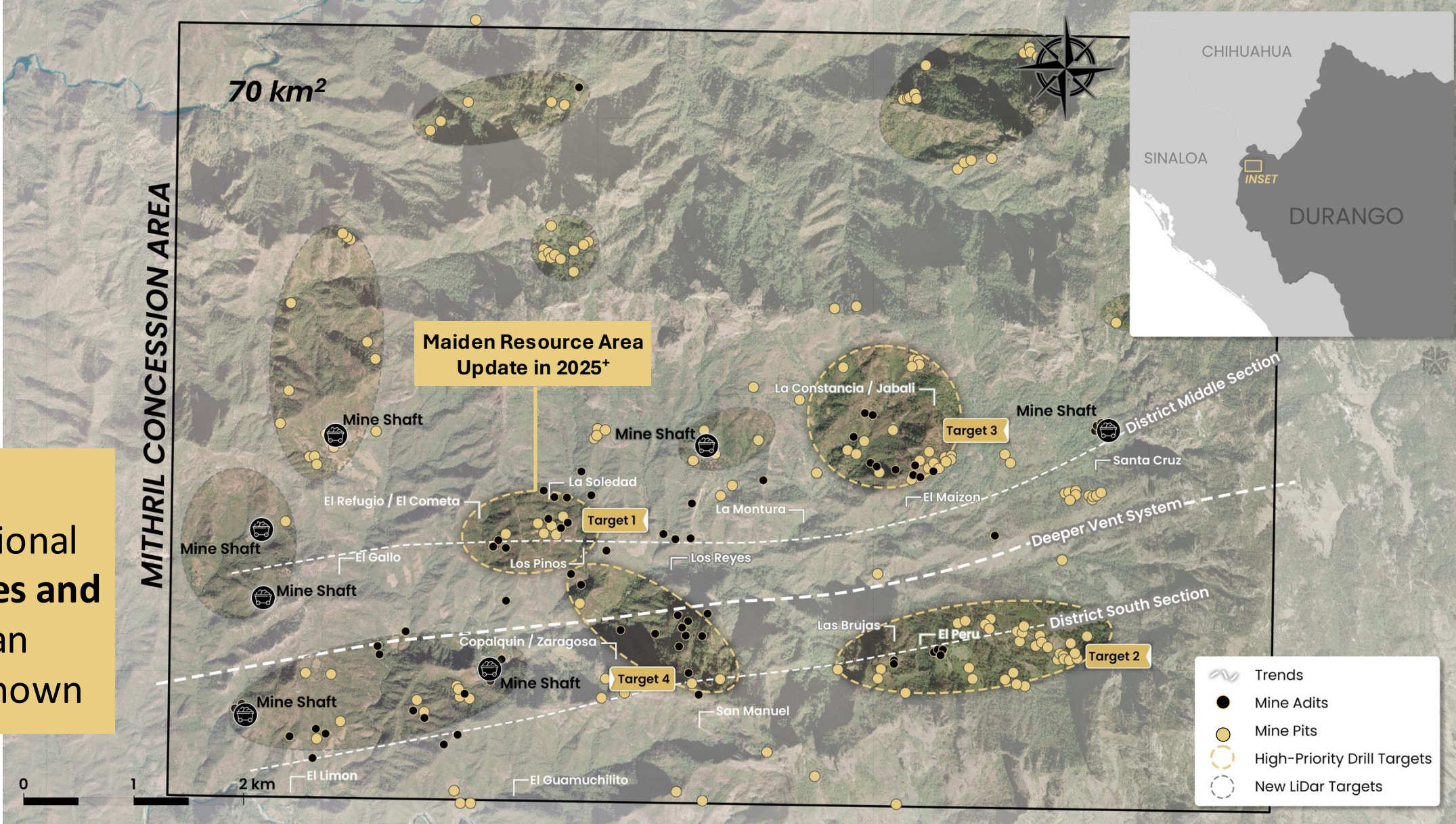
Mexico and Project Overview



*Current reserves/resources plus approx. past production
 # Does not include past production

For personal use only

2024 LiDAR:
>100% additional
historic mines and
workings than
previously known



+See maiden resource slide details

Treasure of the Sierra Madre



For Personal Use Only

Hole ID	From Interval (m)	To Interval (m)	Length Interval (m)	Gold interval (g/t)	Silver interval (g/t)	Gold Eq* (g/t)	Silver Eq* (g/t)
CDH-001	111.00	114.00	3.00	34.7	3,129	79.4	5,560
CDH-002	91.5	96.5	4.55	5.64	326	10.3	732
CDH-014	253.8	261.3	7.50	6.76	159	9.00	632
CDH-099	28.00	32.55	4.55	8.29	137	10.3	717
CDH-033	206.3	215.65	9.35	7.84	138	9.80	687
CDH-050	233.43	237.6	4.17	62.0	444	68.5	4,787
CDH-054	288.25	293.13	4.88	10.4	80.9	11.5	805
CDH-072	35.2	42.0	6.80	74.0	840	86.1	6,024
CDH-075	303.0	311.3	11.0	7.67	163	10.0	700
CDH-077	468.34	476.6	8.26	80.30	705	90.4	6,328
CDH-079	86.6	99.0	12.40	7.60	332	12.3	864
CDH-080	112.19	118.3	6.11	5.08	196	7.89	552
CDH-084	312.15	321.0	8.85	7.20	235	10.6	739
CDH-094	144.00	162.67	18.67	9.64	278	13.6	953
CDH-140	91.77	97.6	5.83	15.73	474	22.5	1,575
CDH-150	266.55	285.50	17.95	5.16	78.0	6.27	439
CDH-159	0	33.0	33.0	31.8	274	35.7	2,500
CDH-162	99.00	103.60	4.60	5.51	182	8.11	568
MTH-LS24-01	42.00	46.00	4.00	6.60	48.85	7.30	511
MTH-LS25-10	112.00	114.55	2.55	9.97	572	18.1	1,270
MTH-LS25-11	107.00	111.95	4.95	20.5	1,833	46.7	3,268

maiden resource (JORC and NI 43-101) in only 15 months of drilling*

highest grade maiden resource released for Mexico in 2021 – **6.81 g/t AuEq***

mining Study – **Underground mining - fully mechanised**, taking advantage of topography

simple metallurgy – **96% gold and 91% silver recoveries (no lead, zinc or other base metals)**

globally significant drill intercepts

Currently drilling for update 2025

*See Maiden Resource slide for details

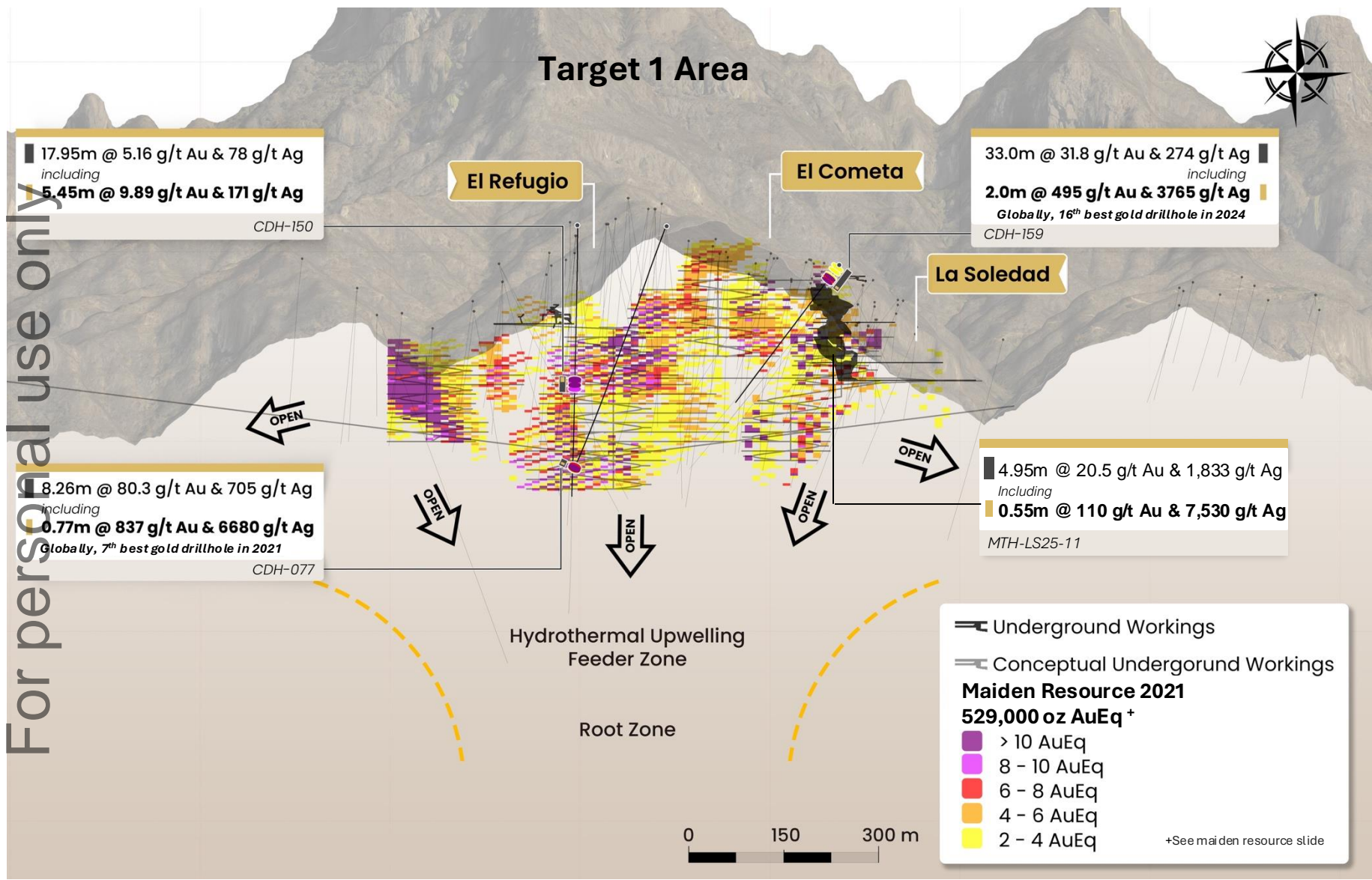
District Highlights

Target 1 Area

*AuEq. = gold equivalent calculated using and gold:silver price ratio of 70:1. That is, 70 g/t silver = 1 g/t gold. The metal prices used to determine the 70:1 ratio are the cumulative average prices for 2021: gold USD1,798.34 and silver: USD25.32 (actual is 71:1) from kitco.com. Metallurgical recoveries are assumed to be approximately equal for both gold and silver at this early stage. Actual metallurgical recoveries from test work to date are 96% and 91% for gold and silver, respectively. In the Company's opinion there is reasonable potential for both gold and silver to be extracted and sold. Actual metal prices have not been used in resource estimate, only the price ratio for the AuEq reporting. Formula for AuEq. = Au grade +((Ag grade/gold:silver price ratio) x (Ag recovery/Au recovery))



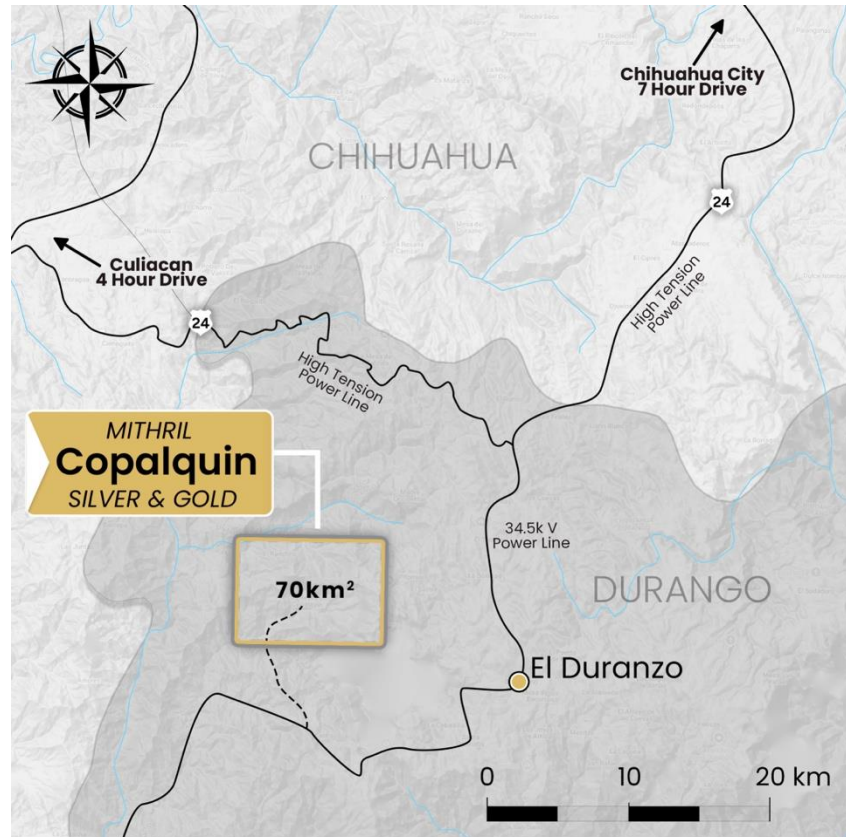
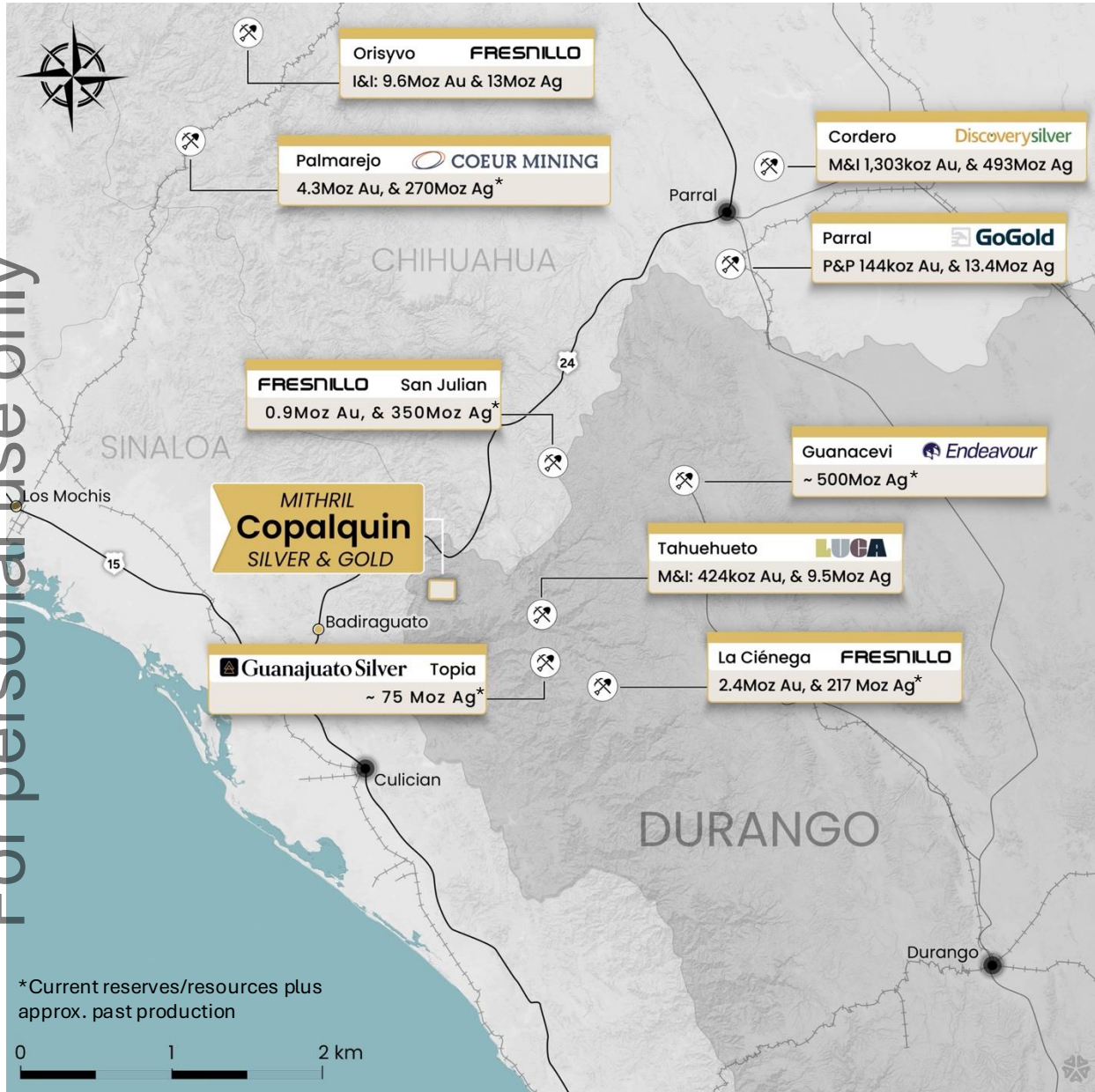
For personal use only



- aim to ~double current Target 1 resource in 2025
- develop at least 2-3 additional Target 1 size resource potential
- underexplored district <5% explored
- 35,000m drilling in 2025

**Target 1 –
aim to 2X
resource in
2025**

For personal use only



- within 20 km of electrical transmission line, National Hwy 24 and El Durazno township
- 4hrs drive to Culiacan
- 8hrs drive to Chihuahua City (Agnico and Coeur Offices)
- municipal road upgrade completion 2025

Locality and Infrastructure



For personal use only



ENVIRONMENT

- man-portable diamond core drills
- drilling contractor - environmental management practices
- A future mine - small footprint u/g mining, high-grade, low tonnage, waste rock storage u/g, dry-stack tailings

SOCIAL

- community wants education and employment opportunities
- Mithril supports up to three community schools, employs 30 local people under the federal employment laws
- developing infrastructure in the district for long term benefit
- there are no ejidos

GOVERNANCE

- fully compliant with all federal laws, successfully receiving VAT refunds
- board & management - successful track record working in remote locations
- excellent relationships with community and mining concession partner

Environmental, Social and Governance



For personal use only



Mined out stope, La Soledad historic mine workings

- **High-margin Mexican silver and gold project**
- **298 historic mines** and workings within **15 target areas** in the **70km² district**
- experienced management **+20 years in region of Mexico**; Palmarejo prior to Coeur takeover, Cerro del Gallo prior to Primero takeover, plus highly experienced advisors
- tight share register with significant Board ownership, institutions, **top 100 owns 78%**
- **dual ASX/TSXV listed** (ASX:MTH, TSXV:MSG⁺)

*Since 26 September 2024

Investment Summary



For personal use only



What is next for Mithril...

- **Target 1** drilling in progress for **resource update**
- **Second drill** on site end of **March 2025**
- **Drill next two target areas**, each similar size to **Target 1**
- **District model Drilling** – locate conduit responsible for **10 km wide epithermal system**
- **Fully funded** for **35,000 metres** of drilling in **2025**

TARGET 1 - RESOURCE HIGHLIGHTS

- ✓ High-grade underground mining taking advantage of topography
- ✓ 17,700 m drilled, US\$12.50 per oz AuEq* all in discovery cost
- ✓ ~16,000 m drilled at Target 1 area since maiden resource
- First of several target areas in the District – 298 historic mines and workings – 70km²
- ✓ Open at depth, only top 300m drilled – La Soledad open to NW
- ✓ Cross cutting NW structures mapped

2.4Mt CONTAINING

- 373 koz Gold at 4.80 g/t
- 10.95 moz Silver at 141 g/t
- Total 529 koz AUEQ* at 6.81 g/t AUEQ* (Cut-off grade of 2.0 g/t AUEQ*)
- 28.6% of the resource tonnage is classified as indicated

For personal use only

	Category	Tonnes	Gold	Silver	Gold Eq*	Silver Eq*	Gold	Silver	Gold Eq*	Silver Eq*
		(kt)	(g/t)	(g/t)	(g/t)	(g/t)	(koz)	(koz)	(koz)	(koz)
El Refugio	Ind	691	5.43	114	7.06	494	121	2,538	157	10,981
	Inf	1,447	4.63	137	6.59	461	215	6,377	307	21,456
La Soledad	Ind	-	-	-	-	-	-	-	-	-
	Inf	278	4.12	228	7.38	517	37	2,037	66	4,617
Total	Ind	691	5.43	114	7.06	494	121	2,538	157	10,981
	Inf	1,725	4.55	152	6.72	470	252	8,414	372	26,077
Total		2,416	4.80	141	6.81	477	373	10,953	529	37,058

Maiden Resource, Target 1 Area – High Grade

Mineral (JORC – Nov 2021 and NI 43-101- Aug 2024) resource estimate El Refugio – La Soledad using a cut-off grade of 2.0 g/t AuEq*

*AuEq. gold equivalent and AgEq silver equivalent calculated using and gold:silver price ratio of 70:1. That is, 70 g/t silver = 1 g/t gold. The metal prices used to determine the 70:1 ratio are the cumulative average prices for 2021: gold USD1,798.34 and silver: USD25.32 (actual is 71:1) from kitco.com. Metallurgical recoveries are assumed to be approximately equal for both gold and silver at this early stage. Actual metallurgical recoveries from test work to date are 96% and 91% for gold and silver, respectively. In the Company's opinion there is reasonable potential for both gold and silver to be extracted and sold. Actual metal prices have not been used in resource estimate, only the price ratio for the AuEq reporting. Formula for AuEq. = Au grade + ((Ag grade/gold:silver price ratio) x (Ag recovery/Au recovery))





MITHRIL

Silver and Gold

John Skeet
Managing Director/CEO +61 435 766 809
+1 672 962 7112 jskeet@mithrilsilvergold.com

Advisors

Simon Catt
Arlington +44 786 656 5544 scatt@agam.co.uk

Tim Sorensen
TSCG Capital +1 416 509 9638 tsorensen@tscgcapital.com

Craig Stranger
PAC Partners +61 409 206 500 cstranger@pacpartners.com.au

Authorised for release by Board of Directors