

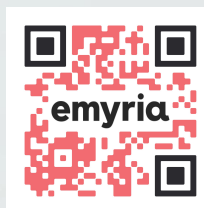
# emyria

ASX : EMD

## RESPONDING TO AUSTRALIA'S MENTAL HEALTH CRISIS

*Advanced therapies.  
Compassionate care.*

**04 February 2025**  
Euroz Healthcare Forum



# DISCLAIMER

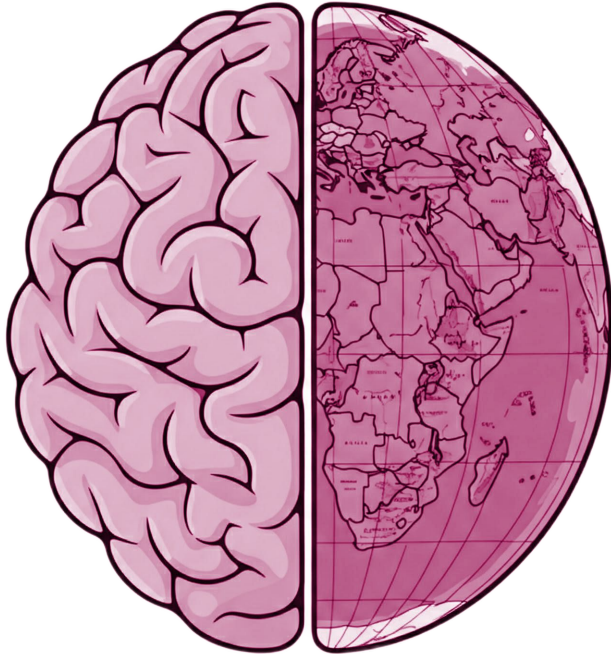
*This presentation has been prepared by Emyria Limited ACN 625 085 734 (Company or Emyria). This presentation is not a financial product or investment advice or recommendation, offer or invitation by any person or to any person to sell or purchase securities in Emyria in any jurisdiction. This presentation contains general information only and does not consider the investment objectives, financial situation and needs of individual investors. Investors should make their own independent assessment of the information in this presentation and obtain their own independent advice from a qualified financial adviser having regard to their personal objectives, financial situation and needs before taking any action. No representation or warranty, express or implied, is made as to the accuracy, completeness, reliability or adequacy of any statements, estimates, opinions or other information, or the reasonableness of any assumption or other statement, contained in this presentation. Nor is any representation or warranty (express or implied) given as to the accuracy, completeness, likelihood of achievement or reasonableness of any forecasts, prospective statements or returns contained in this presentation. Such forecasts, prospective statements or returns are by their nature subject to significant uncertainties and contingencies, many of which are outside the control of Emyria. To the maximum extent permitted by law, Emyria and its related bodies corporate, directors, officers, employees, advisers and agents disclaim all liability and responsibility (including without limitation any liability arising from fault or negligence) for any direct or indirect loss or damage which may arise or be suffered through use or reliance on anything contained in, or omitted from, this presentation. An investment in Emyria securities should be considered speculative and is subject to investment and other known and unknown risks, some of which are beyond the control of Emyria. Emyria does not guarantee any rate of return or the absolute or relative investment performance of Emyria securities. The distribution of this presentation including in jurisdictions outside Australia, may be restricted by law. Any person who receives this presentation must seek advice on and observe any such restrictions.*

*This release may contain certain forward-looking statements with respect to matters including but not limited to the financial condition, results of operations and business of Emyria and certain of the plans and objectives of Emyria with respect to these items. These forward-looking statements are not historical facts but rather are based on Emyria's current expectations, estimates and projections about the industry in which Emyria operates, and its beliefs and assumptions. Words such as "anticipates," "expects," "intends," "plans," "believes," "seeks," "estimates", "guidance" and similar expressions are intended to identify forward looking statements and should be considered an at-risk statement. Such statements are subject to certain risks and uncertainties, particularly those risks or uncertainties inherent in the process of developing technology and in the endeavour of building a business around such products and services. These statements are not guarantees of future performance and are subject to known and unknown risks, uncertainties and other factors, some of which are beyond the control of Emyria, are difficult to predict and could cause actual results to differ materially from those expressed or forecasted in the forward looking statements. Emyria cautions shareholders and prospective shareholders not to place undue reliance on these forward-looking statements, which reflect the view of Emyria only as of the date of this release. The forward-looking statements made in this announcement relate only to events as of the date on which the statements are made. Emyria will not undertake any obligation to release publicly any revisions or updates to these forward-looking statements to reflect events, circumstances or unanticipated events occurring after the date of this announcement except as required by law or by any appropriate regulatory authority.*

*All medicines carry risks and specialist prescribers, such as registered psychiatrists, are best placed to assess the suitability of a new medication against a patient's individual circumstances and medical history before proceeding. Adverse effects of MDMA include high blood pressure, increased pulse rate, faintness, and panic attacks, and in some rare cases it can cause loss of consciousness or trigger seizures. Other side effects include involuntary jaw clenching, decreased appetite, restless legs, nausea, headache, sweating and muscle/joint stiffness. Adverse effects of psilocybin can include temporary increase in blood pressure and a raised heart rate. There may be some risk of psychosis in predisposed individuals. The effects of MDMA and psilocybin are unlikely at low doses in the treatment regimens used in psychedelic-assisted psychotherapy while appropriately managed in a controlled environment with direct medical supervision. The risk profile of the MDMA inspired compounds is currently unknown.*

*The availability of these products is subject to the safety and efficacy of the products being tested through clinical trials. Emyria makes no representations or warranties as to the safety or efficacy of the products or the products' ability (or the ability of its key compounds) to be used in the treatment of indications such as PTSD. There are currently no approved products containing MDMA, psilocybin or MDMA inspired compounds that the TGA has evaluated for quality, safety and efficacy.*

For personal use only



**Half of the global population  
will experience mental illness. <sup>1</sup>**

**Mental health disorders could cost the  
world \$16 trillion by 2030. <sup>2</sup>**

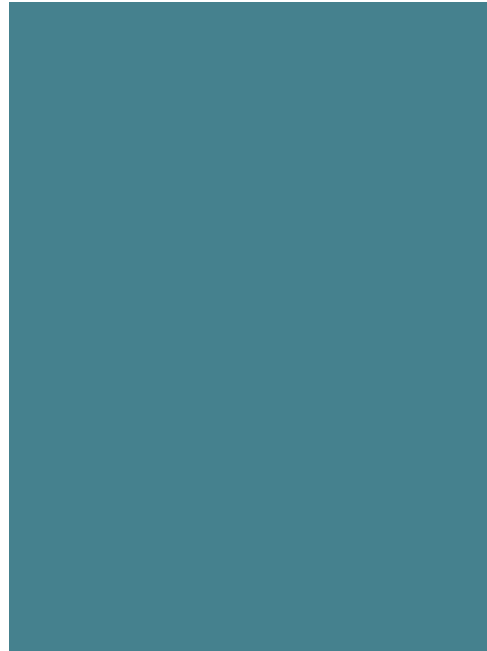


For personal use only

*Increasing  
amounts  
being spent  
on mental  
health...*

## Cancer <sup>1</sup>

**\$10.1B**



## Mental Health <sup>2</sup>

**\$12.2B**





For personal use only

...yet,  
**prevalence**  
of mental  
health is  
increasing

emyria

Figure 2: Types of serious illness by age and sex, 2009 to 2021

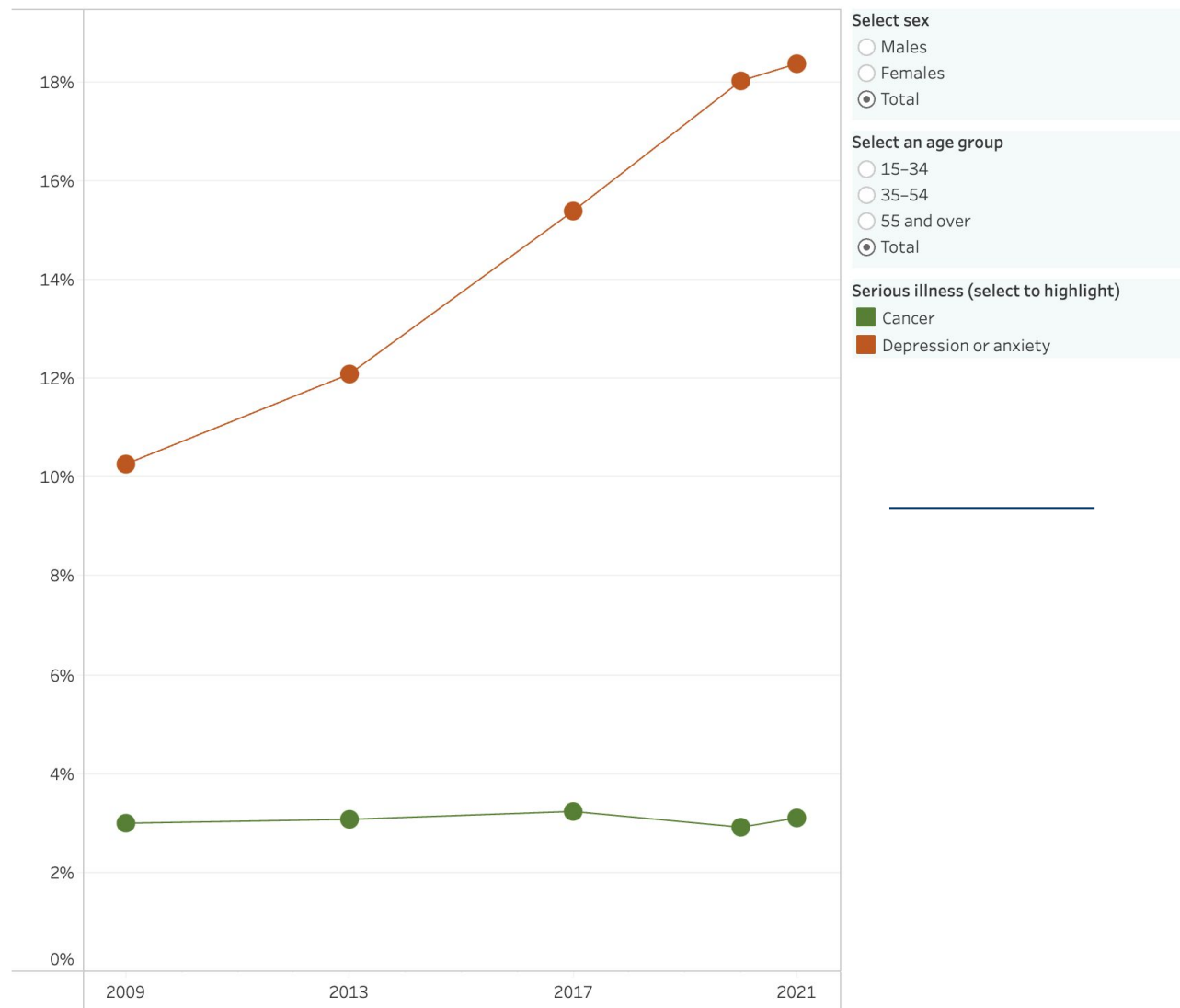


Figure 2: Estimated proportion of Australians reporting serious illnesses, by sex and age group, 2009–2021.



For personal use only

1      The mental health crisis  
gripping Australia’s private  
hospitals

*Some health insurers say stand-alone mental health hospitals are unlikely to exist in 10 years’ time given the challenges they face.*

2      **'Declaration of war': NSW government's plan for  
mental health system slammed amid psychiatrist  
resignations**

3      **Australians' mental health drops to 4-year low**

*Businesses losing up to 69 workdays of productivity annually per  
employee due to poor mental health: report*

4      Bethesda Clinic to close nine months after opening  
due to lack of psych doctors and funding issues

5      70% of Australians with depressive disorders not getting adequate  
treatment







For personal use only



Australia is the **ONLY** jurisdiction in the world to reschedule two promising treatments <sup>1</sup>

[Home](#) > [News and Community](#) > [Media releases](#)

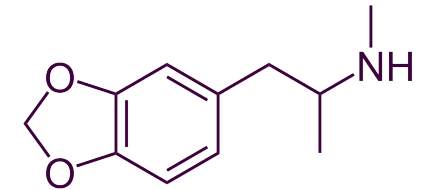
## Change to classification of psilocybin and MDMA to enable prescribing by authorised psychiatrists

Published: 3 February 2023

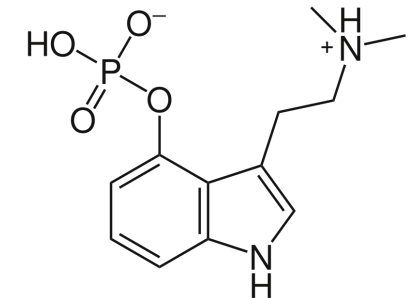
[Listen](#) [Print](#) [Share](#)

From 1 July this year, medicines containing the psychedelic substances psilocybin and MDMA (3,4-methylenedioxy-methamphetamine) can be prescribed by specifically authorised psychiatrists for the treatment of certain mental health conditions.

**MDMA**



**Psilocybin**



# PSYCHEDELICS TO TACKLE TREATMENT RESISTANT **PTSD** and **DEPRESSION**

## MDMA-Assisted Therapy for Post-Traumatic Stress Disorder

*PTSD is a chronic, debilitating condition that can develop after experiencing, or repeatedly being exposed to, traumatic events*

**7%**

of adults <sup>1</sup>  
**1.5m** Australians  
**23m** Americans

**2x**

as common in  
**first responders** <sup>2</sup>



## Psilocybin-Assisted Therapy for Treatment-Resistant Depression

*TR-D is major depression that does not improve after trialling 2 or more medications*

**4.4%**

of adults <sup>3</sup>  
**1.1m** Australians  
**16m** Americans

**\$2.3<sub>B</sub>**

per year.  
Treatment costs in  
Australia <sup>4</sup>

### SOURCES:

1. <https://www.phoenixaustralia.org/ptsd-awareness-day/>

2. Obuobi-Donkor G, et al. A Scoping Review on the Prevalence and Determinants of Post-Traumatic Stress Disorder among Military Personnel and Firefighters: Implications for Public Policy and Practice. Int J Environ Res Public Health. 2022 Jan 29;19(3):1565. doi: 10.3390/ijerph19031565.

3. <https://www.sciencedirect.com/science/article/pii/S2772598724000230>

4. <https://research-management.mq.edu.au/ws/portalfiles/portal/112464237/112458032.pdf>



For personal use only

**Potent, psychoactive  
medications**



*Specialists*



*Therapists*

**Intensive and  
supportive  
psychotherapy**



CASE STUDY | KATE | FROM WORKERS COMP TO BACK-TO-WORK



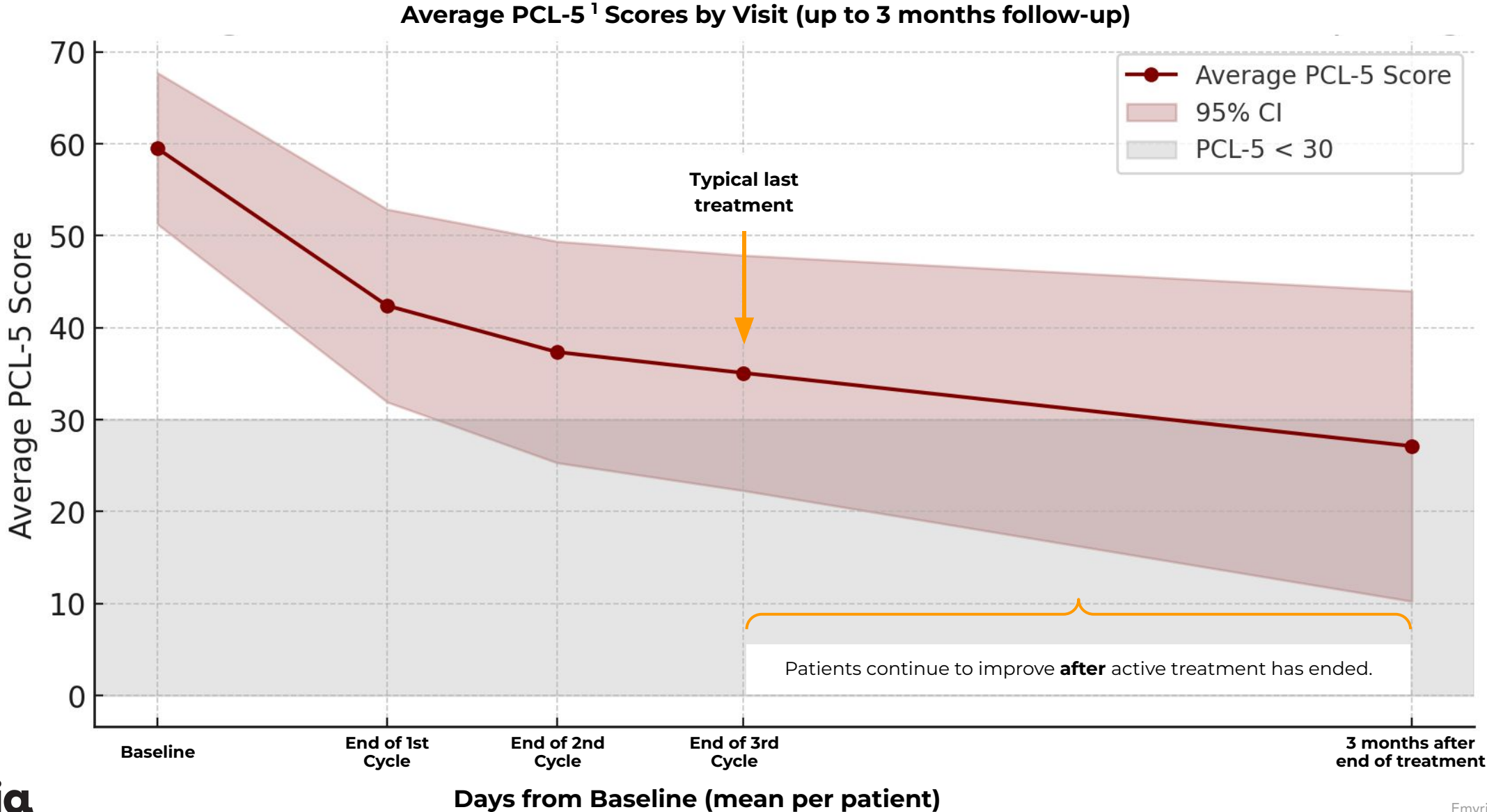
Kate's story: **First responder**

- **PTSD** due to cumulative workplace traumas
- Myriad of **therapies**: EMDR, in-vivo, ACT, CBT, mindfulness, somatic exercises, TMS, imagery rescripting, nightmare rescripting. Different psychotropic **medications**
- Stuck, terrified and tortured by her unrelenting symptoms and her psychological defenses.
- Despite all efforts and commitment, **treatment** and **therapy resistant**

Soon after MDMA-AT, Kate sought employment again after nearly 5 years.

EMYRIA'S PTSD PROGRAM | 3 MONTHS POST-TREATMENT | SYMPTOM IMPROVEMENT

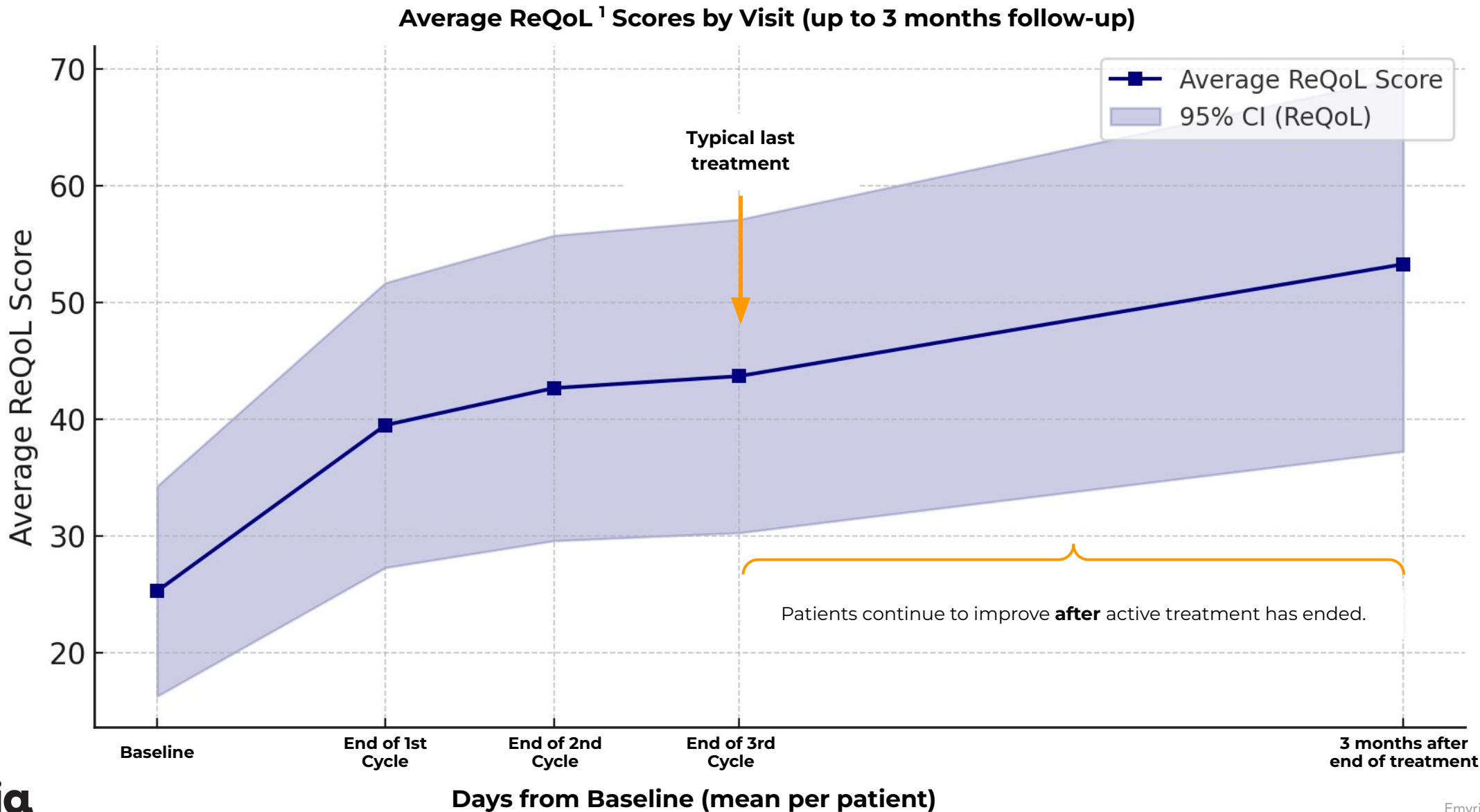
For personal use only



SOURCES:  
1. The **PCL-5** is a self-administered, 20-item self-report tool used to measure PTSD symptoms according to diagnostic DSM-5 criteria (Diagnostic and Statistical Manual of Mental Disorders, 5th Edition).

EMYRIA'S PTSD PROGRAM | 3 MONTHS POST-TREATMENT | *Quality of Life IMPROVEMENT*

For personal use only





# WHY CAN'T EVERYONE DO THIS? THE SIGNIFICANT BARRIERS TO ENTRY!



**TGA Approved  
Authorised  
Prescribers**



**Australian Government**

**Department of Health and Aged Care**  
Therapeutic Goods Administration



**Secure,  
pharmaceutical-grade  
medication supply**



# WORLD-CLASS FACILITIES AND A SKILLED TEAM OF CLINICIANS

For personal use only

Emyria's team of over 20 trained clinicians comprise: Specialist psychiatrists, psychologists, mental health nurses, counsellors, social workers and; occupational therapists



Figure 1:  
12 of Emyria's twenty trained therapists.



LIFETIME PREVALENCE OF SERIOUS MENTAL ILLNESS IN AUSTRALIA (million persons)



For personal use only

ANXIETY DISORDERS

PTSD = 2.1

Generalised  
Anxiety  
Disorder = 1.6

Panic  
Disorder = 1.2

Generalised Anxiety Disorder

Panic Disorder

Obsessive Compulsive  
Disorder = 0.8

Post-Traumatic Stress Disorder

Obsessive-Compulsive Disorder

AFFECTIVE DISORDERS

Depression = 2.3

Depressive Episode

Bipolar  
Affective  
Disorder = 0.7

Dysthymia =  
0.5

Bipolar Affective Disorder

Dysthymia



ANXIETY DISORDERS

AFFECTIVE DISORDERS

~800,000  
Eligible for  
MDMA-AT

(show treatment  
resistance and meet  
clinical criteria <sup>2)</sup>)

Generalised Anxiety Disorder

Panic Disorder

Obsessive-Compulsive Disorder

Post-Traumatic Stress Disorder

~500,000  
Eligible for  
PA-AT

(show treatment  
resistance and meet  
clinical criteria <sup>2)</sup>)

Depressive Episode

Bipolar Affective Disorder

Dysthymia

Avg  
treatment  
costs  
\$20k-\$30k /  
pt

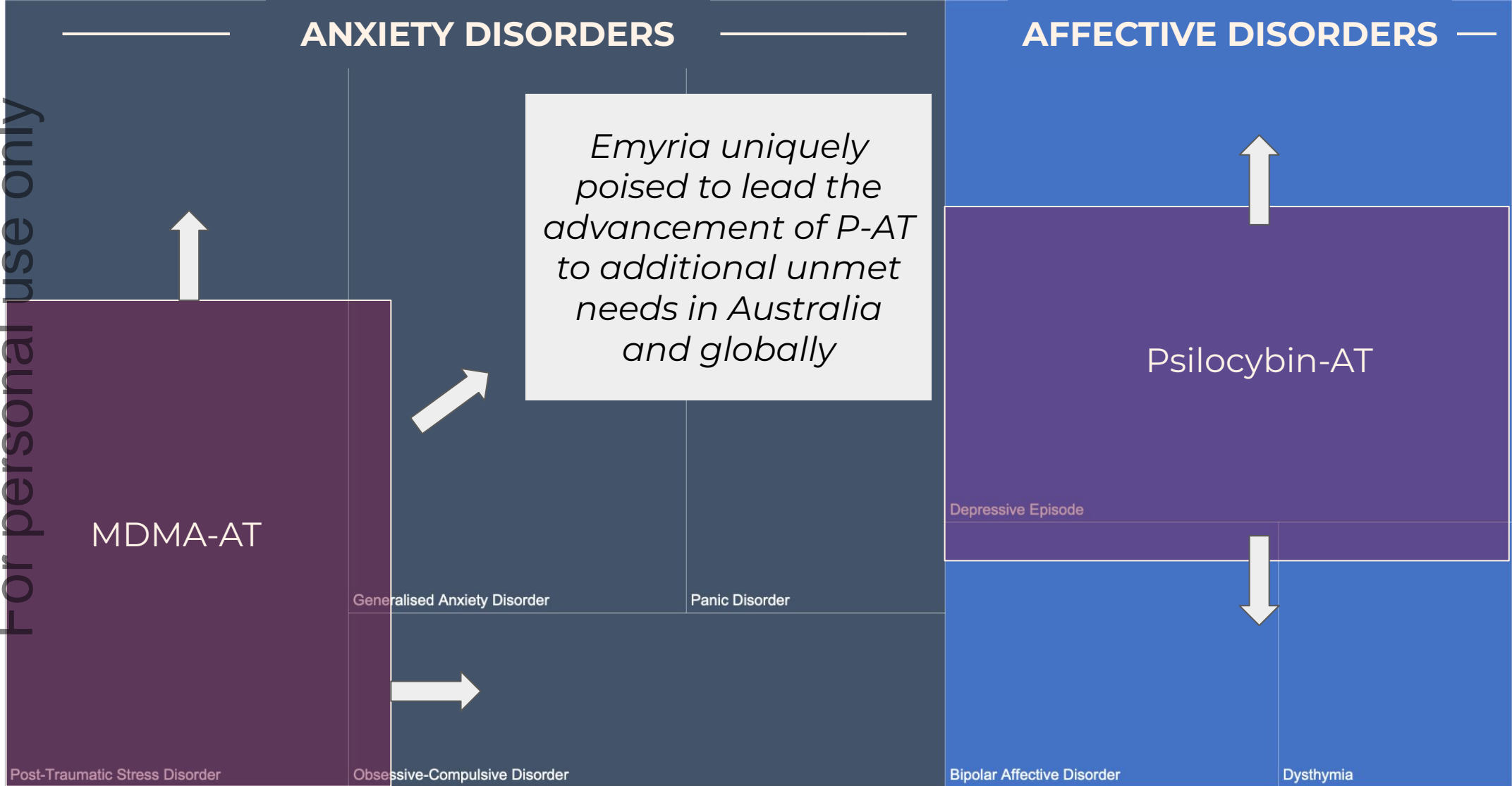
Total  
addressable  
market ~  
\$36B



SOURCES:  
1. Australian Bureau of Statistics, accessed 31 Jan 2025  
2. For workings, please refer to Slide 24  
3. 5. Treatment cost varies depending on average number of treatment cycles per patient, per condition. Emyria's programs average 3 treatment cycles for MDMA-AT and 2 treatment cycles for TR-Depression



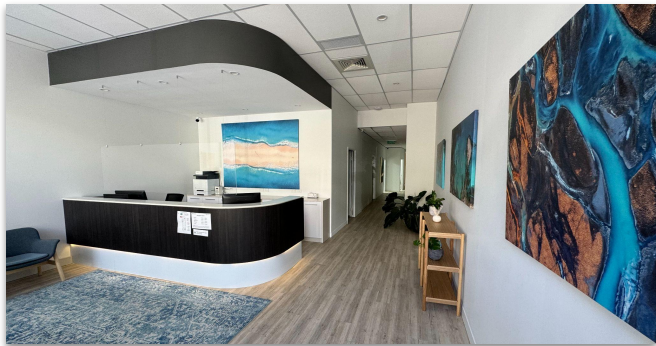
For personal use only



SOURCES:  
1. Australian Bureau of Statistics, accessed 31 Jan 2025

For personal use only

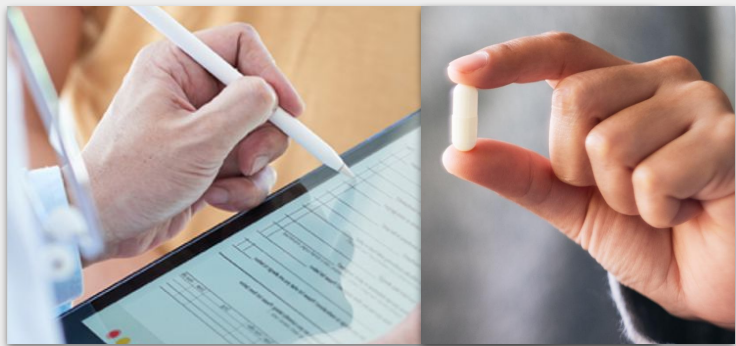
**Establish world-class, dedicated treatment centres, specialising in new psychiatric treatments <sup>1</sup>**



**Expansion to be supported by provider agreements with major private and government funders**



**Leverage Emyria's proprietary Real-World Data to create better care models & treatments**



The **only ASX-listed entity** integrating direct care in psychedelic-assisted therapy

For personal use only

<p><b>MAJOR UNMET NEEDS - MENTAL HEALTH</b></p> <p>Emyria is tackling multiple, large and urgent unmet needs.</p>	<p><b>A HARD-TO-COPY TREATMENT THAT WORKS</b></p> <p>Emyria is already delivering encouraging clinical outcomes and has a proven delivery model.</p>	<p><b>AN INCREDIBLE TEAM</b></p> <p>Expertise in mental health, national clinic expansion, Real-World Data and new care model development.</p>	<p><b>CLEAR GROWTH STRATEGY BACKED BY MAJOR HEALTH PAYERS</b></p> <p>We're in advanced discussions with major payers to help facilitate expansion and better patient access nationally.</p>	<p><b>STRONG IP</b></p> <p>Data captured through clinics creates intellectual property and supports long-term drug development programs.</p>
---	--	--	---	--



## CONTACT INFORMATION

**Greg Hutchinson**

[ghutchinson@emyria.com](mailto:ghutchinson@emyria.com)

**Michael Winlo**

[mwinlo@emyria.com](mailto:mwinlo@emyria.com)

**Investor / Media Inquiries**

[investors@emyria.com](mailto:investors@emyria.com)

**Visit Our Investor Hub**





Investor confidence in psychedelics is returning, driven by shifting political landscapes in the US that may signal broader acceptance and support for these treatments.

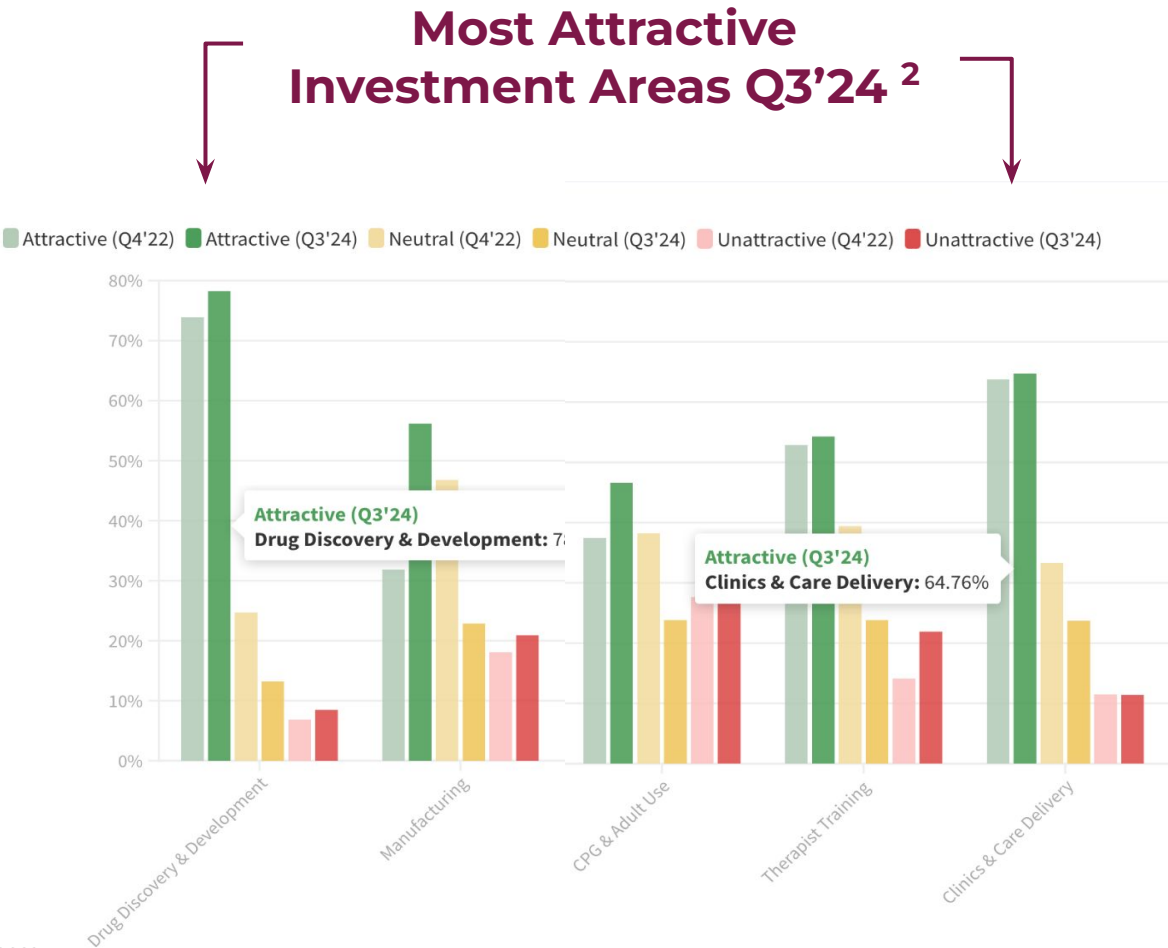
For personal use only

POLITICO

The buzz about Trump and psychedelics

By ERIN SCHUMAKER, DANIEL PAYNE, RUTH READER and CARMEN PAUN | 11/11/2024 02:00 PM EST

Donald Trump’s return to the White House could be a bright spot in an otherwise brutal year for the psychedelic medicine movement.



**SUBSTANTIAL SHAREHOLDERS**

Shareholder	%
#1 Holder: Greg Hutchinson, Chairman	7.2% <sup>1</sup>
Top 50	65.9%

**ASX: EMD TRADING INFORMATION**

<b>Last Traded Share Price</b>	<b>A\$0.035</b>
12-Month low / high	A\$0.026 / 0.076
Shares Outstanding	455,471,286
<b>Market Capitalisation <sup>2</sup></b>	<b>A\$15.6M</b>
Last Cash Position <sup>3</sup>	A\$1,550,000 (With additional \$1,000,000 subject to shareholder approval <sup>1</sup> )

## NOTES:

1. Subject to shareholder approval to be sought at an upcoming EGM, anticipated March 2025
2. As of close of market 03 Feb 2025
3. As reported in December Quarterly Report

For personal use only



**Greg Hutchinson**  
**Executive Chairman**



**Dr Michael Winlo**  
**Executive Director**



**Dr Karen Smith**  
**Non-Executive Director**



**Dr Mohit Kaushal**  
**Non-Executive Director**



**Prof Sir John Tooke**  
**Non-Executive Director**

- **Health Service Leadership:** CEO Sonic HealthPlus and 5D Clinics; leads 40+ clinics

- **Research & Data Expertise:** Ex-Palantir healthcare lead, merging Medical Doctor and Stanford MBA

- **Biopharma Executive:** 100+ clinical trials and 20+ regulatory approvals; Former Chief Medical Officer and Global Head of R&D at Jazz Pharma

- **Health IT Strategist:** Key role in Oak Street Health's \$10.6B acquisition by CVS Health; Served in Obama's Health IT task force; Adjunct Professor at Stanford

- **Clinical Service & Health Payer Expertise:** Former President of the Academy of Medical Sciences, influential roles at BUPA and past advisor to Google DeepMind



# EPIDEMIOLOGY OF PTSD and Tr-Depression in Australia <sup>1</sup>

For personal use only

	Adults aged 18-80 (millions) <sup>1</sup>	% with condition	Adults with condition	% with chronic and severe	Adult PTSD cases that are chronic or severe	% with disqualifying condition <sup>3</sup>	Adult PTSD cases eligible for MDMA-AT
PTSD	20.7	7-11% <sup>2</sup>	2,277,000	50% <sup>3</sup>	1,138,500	22% <sup>3</sup>	888,030
Tr-Dep	20.7	4-6% <sup>4</sup>	1,242,000	50% <sup>4</sup>	621,000	22% <sup>3</sup>	484,380

Sources:  
1. <https://www.abs.gov.au/statistics/people/population/population-clock-pyramid>  
2. 7%: - <https://www.phoenixaustralia.org/ptsd-awareness-day/> 11%: <https://www.aihw.gov.au/reports/mental-health/stress-and-trauma>  
3. <https://link.springer.com/article/10.1007/s40261-022-01122-0#Fig2>, disqualifying conditions can comprise certain cardiovascular risk factors or a history of psychotic disorder  
4. [https://www.blackdoginstitute.org.au/wp-content/uploads/2020/04/1-facts\\_figures.pdf](https://www.blackdoginstitute.org.au/wp-content/uploads/2020/04/1-facts_figures.pdf)