



Meridian.

## Release

Stock Exchange Listings NZX (MEL) ASX (MEZ)

### Meridian Energy monthly operating report for November 2024

16 December 2024

Attached is Meridian Energy Limited's monthly operating report for the month of November 2024.

#### Highlights this month include:

- In the month to 10 December 2024, national hydro storage decreased from **139%** to **134%** of historical average
- South Island storage decreased to **137%** of average and North Island storage increased to **120%** of average by 10 December 2024
- Meridian's November 2024 monthly total inflows were **119%** of historical average
- Waiau catchment inflows in November 2024 were **89%** of historical average
- Meridian's Waitaki catchment water storage at the end of November 2024 was **151%** of historical average
- Snow storage in Meridian's Waitaki catchment was **91%** of average in early December
- Water storage in Meridian's Waiau catchment was **88%** of average at the end of November 2024
- November 2024 was dry and warm for most of the country, with temperatures above average for both islands. Rainfall was below normal for the much of the country, apart from the South Island's West Coast which had above normal rainfall
- National electricity demand in November 2024 was **-2.2%** lower than the same month last year
- New Zealand Aluminium Smelter's average load during November 2024 was **451MW**
- Meridian's retail sales volumes in November 2024 were **+1.8%** higher than November 2023
- Compared to November 2023, segment sales increased in residential +0.6%, agricultural +11.4% and large business +7.8%, with decreases in small medium business -1.1% and corporate -1.8%

Weekly lake storage updates are available on Meridian's website. See comparative lake levels at: [www.meridianenergy.co.nz/power-stations/lake-levels](http://www.meridianenergy.co.nz/power-stations/lake-levels)

#### ENDS

Neal Barclay  
Chief Executive  
Meridian Energy Limited

#### For investor relations queries, please contact:

Owen Hackston  
Investor Relations Manager  
021 246 4772

#### For media queries, please contact:

Phil Clark  
Head of Communications  
027 838 5710

For personal use only



Meridian.

# Monthly Operating Report

November 2024



FTSE4Good

Member of  
**Dow Jones  
Sustainability Indices**  
Powered by the S&P Global CSA

## November highlights

In the month to 10 December 2024, national hydro storage decreased from **139%** to **134%** of historical average

South Island storage decreased to **137%** of average and North Island storage increased to **120%** of average by 10 December 2024

Meridian's November 2024 monthly total inflows were **119%** of historical average

Waiau catchment inflows in November 2024 were **89%** of historical average

Meridian's Waitaki catchment water storage at the end of November 2024 was **151%** of historical average

Snow storage in Meridian's Waitaki catchment was **91%** of average in early December

Water storage in Meridian's Waiau catchment was **88%** of average at the end of November 2024

November 2024 was dry and warm for most of the country, with temperatures above average for both islands. Rainfall was below normal for the much of the country, apart from the South Island's West Coast which had above normal rainfall

National electricity demand in November 2024 was **-2.2%** lower than the same month last year

New Zealand Aluminium Smelter's average load during November 2024 was **451MW**

Meridian's retail sales volumes in November 2024 were **+1.8%** higher than November 2023

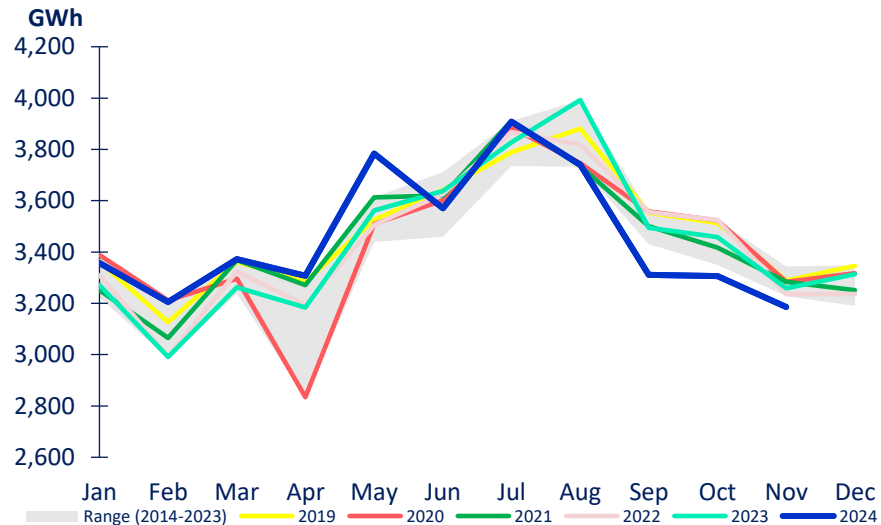
Compared to November 2023, segment sales increased in residential +0.6%, agricultural +11.4% and large business +7.8%, with decreases in small medium business -1.1% and corporate -1.8%

For personal use only

## Market data

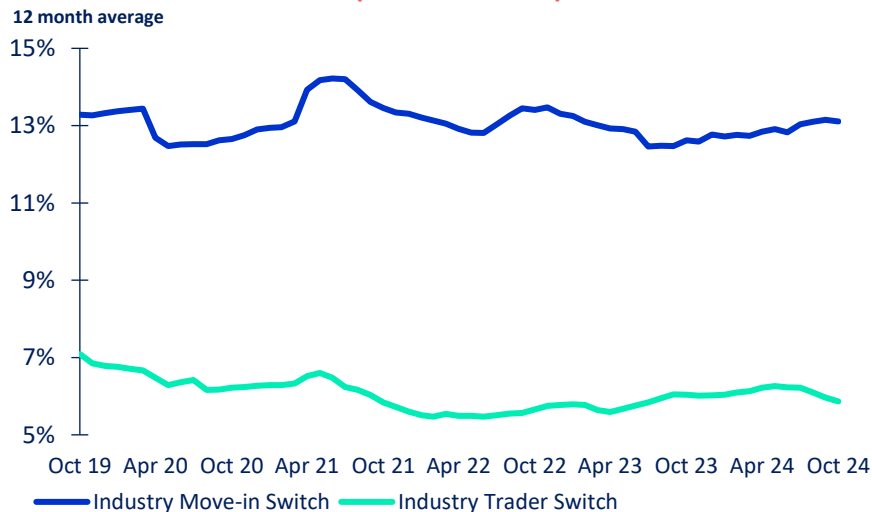
- National electricity demand in November 2024 was -2.2% lower than the same month last year
- New Zealand Aluminium Smelter’s average load during November 2024 was 451MW
- November 2024 was dry and warm for most of the country, with temperatures above average for both islands. Rainfall was below normal for the much of the country, apart from the South Island's West Coast which had above normal rainfall
- Demand in the last 12 months was +0.4% higher than the preceding 12 months
- 12-month average switching rate of customers changing retailers but not moving (“trader” switch) was 5.9% at the end of October 2024
- 12-month average switching rate of customers moving and changing retailers (“move-in” switch) was 13.1% at the end of October 2024

### NATIONAL DEMAND



Source: Electricity Authority (reconciled demand)

### MARKET ICP SWITCHING (ALL RETAILERS)



Source: Electricity Authority

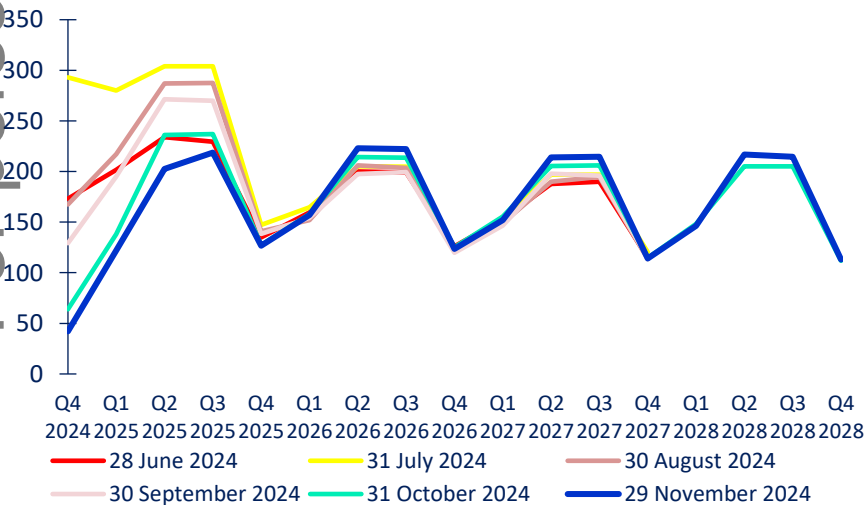
## Market data

- November 2024 saw decreases in the 2024 and 2025 ASX electricity futures prices
- National storage decreased from 139% of average on 11 November 2024 to 134% of average on 10 December 2024

South Island storage decreased to 137% of historical average by 10 December 2024.  
 North Island storage increased to 120% of average

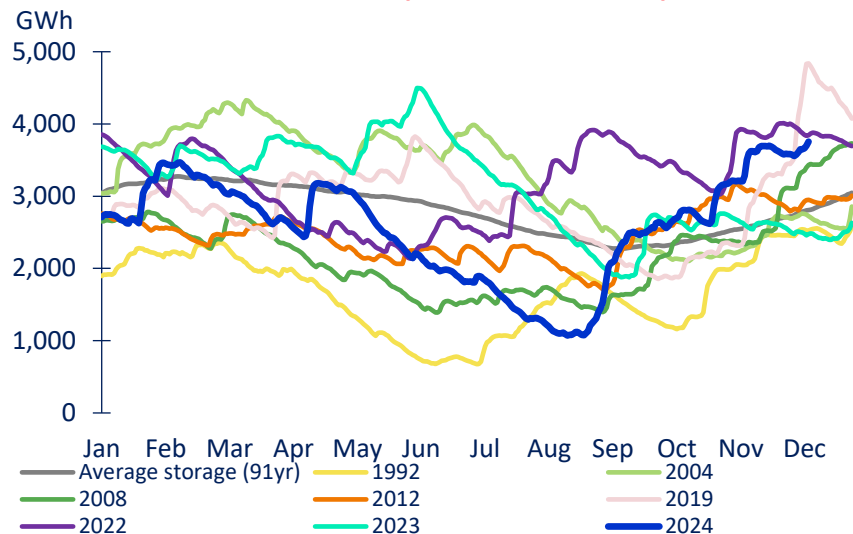
For personal use only

### OTAHUHU ASX FUTURES SETTLEMENT PRICE \$/MWh



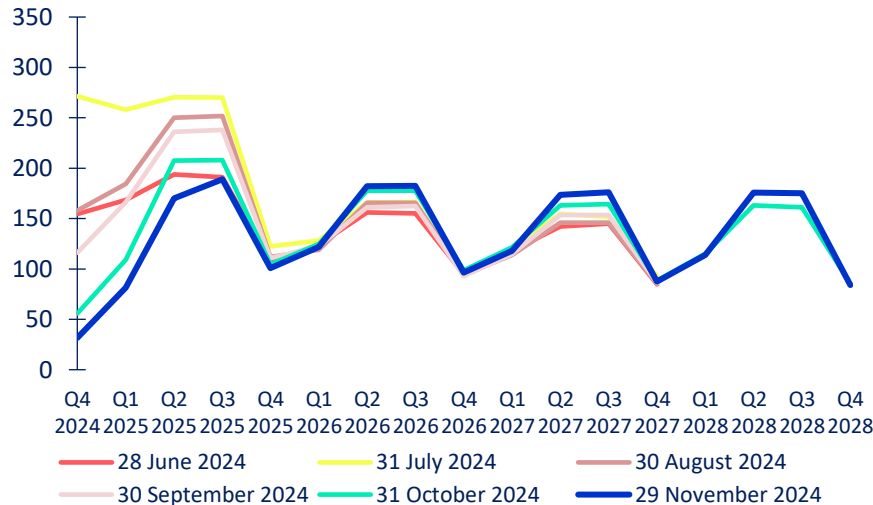
Source: ASX

### NATIONAL HYDRO STORAGE (10 December 2024)



Source: NZX

### BENMORE ASX FUTURES SETTLEMENT PRICE \$/MWh

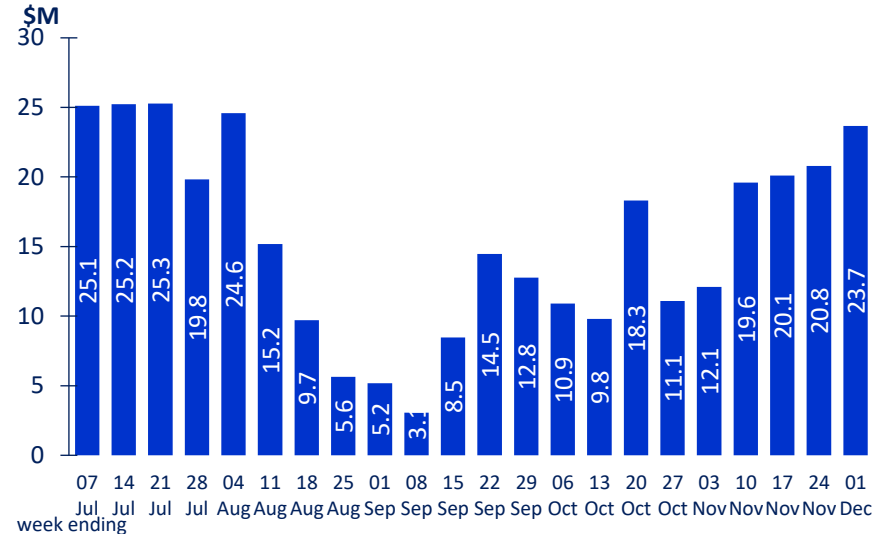


Source: ASX

# Market data

- Since July 2024 the Electricity Authority has begun reporting “Energy Margin” from information provided by six generators
- This excludes operational costs such as staffing, maintenance, debt servicing, depreciation and levies
- Information provided by Meridian has not been assured or audited by the company’s auditors and is different to and not intended to replace information Meridian reports in its financial statements and operating reports

**MERIDIAN ELECTRICITY AUTHORITY REPORTED MARGIN**



Source: Meridian, Electricity Authority

Meridian Electricity Authority Reported Margin

	<u>Wholesale generation revenue</u>	<u>Ancillary market revenue</u>	<u>Other generation revenue</u>	<u>Spot electricity costs</u>	<u>Total</u>
<u>Week ending</u>					
10 Nov	10.2	0.1	18.8	-9.5	19.6
17 Nov	10.3	0.1	19.3	-9.6	20.1
24 Nov	2.1	0.1	20.6	-2.0	20.8
01 Dec	6.5	0.1	23.8	-6.7	23.7

See: <https://public.tableau.com/app/profile/electricity.authority/viz/Energymargin/Energymargin>

Source: Meridian, Electricity Authority

# Meridian retail

For personal use only

- Meridian’s customer connection numbers increased +0.9% during November 2024 and have increased +2.5% since November 2023

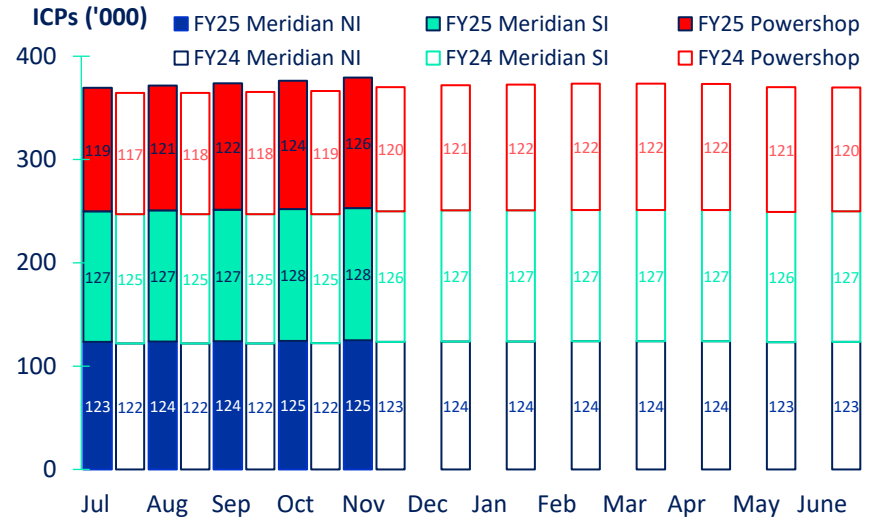
Retail sales volumes in November 2024 were +1.8% higher than November 2023

Compared to November 2023, segment sales increased in residential +0.6%, agricultural +11.4% and large business +7.8%, with decreases in small medium business -1.1% and corporate -1.8%

To date this financial year, retail sales volumes are -1.9% lower than the same period last year

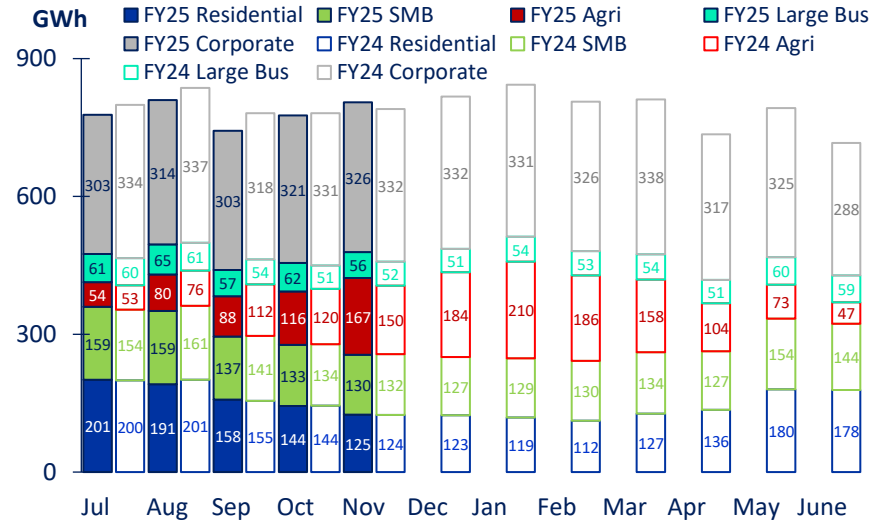
This reflects increased segment sales in large business +8.4%, with decreases in residential -0.7%, small medium business -0.4%, agricultural -1.3% and corporate -5.2%

## MERIDIAN'S CUSTOMER CONNECTIONS



Source: Meridian

## MERIDIAN'S RETAIL SALES VOLUME\*



Source: Meridian

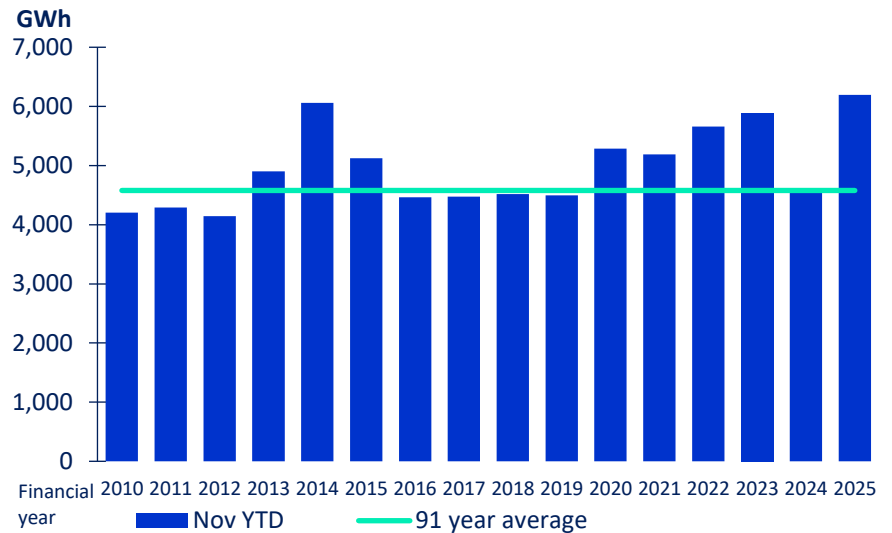
\*excludes volumes sold to New Zealand Aluminium Smelters and CFDs

## Meridian inflows and storage

- November 2024 monthly inflows were 119% of historical average
- Waiau catchment inflows in November 2024 were 89% of historical average, 39% higher than the same month last year
- To date this financial year, inflows are 135.3% of historical average
- Meridian’s Waitaki catchment water storage moved from 1,399GWh to 1,934GWh during November 2024
- Waitaki water storage at the end of November 2024 was 151% of historical average and 57.5% higher than the same time last year
- Snow storage in Meridian’s Waitaki catchment was 91% of average in early December
- Water storage in Meridian’s Waiau catchment was 88% of average at the end of November 2024

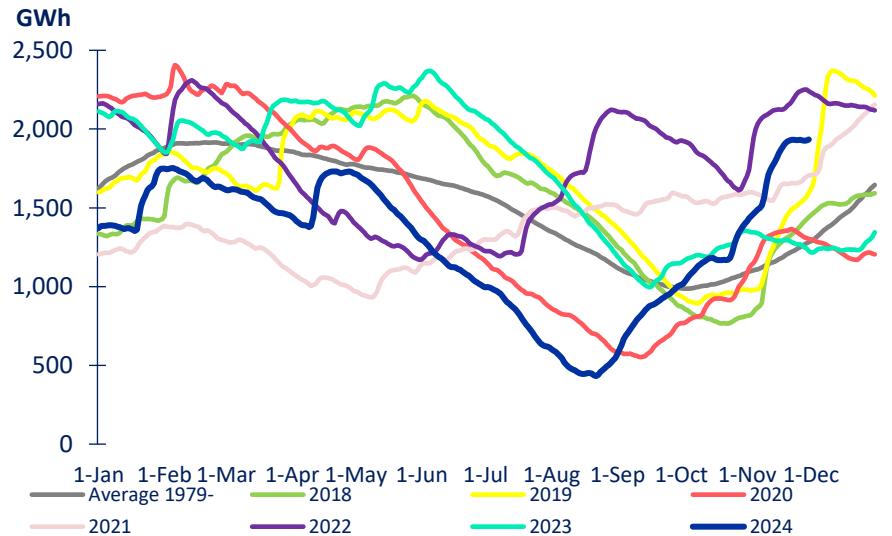
For personal use only

### MERIDIAN'S COMBINED CATCHMENT INFLOWS



Source: Meridian

### MERIDIAN'S WAITAKI STORAGE



Source: Meridian

Weekly lake storage updates are available on Meridian’s website. See comparative lake levels at: [www.meridianenergy.co.nz/power-stations/lake-levels](http://www.meridianenergy.co.nz/power-stations/lake-levels)



# Meridian generation

- Meridian’s generation in November 2024 was +1.9% higher than the same month last year, reflecting lower hydro generation and higher wind generation

To date this financial year, Meridian’s generation is 8.7% lower than the same period last year, reflecting lower hydro generation and higher wind generation

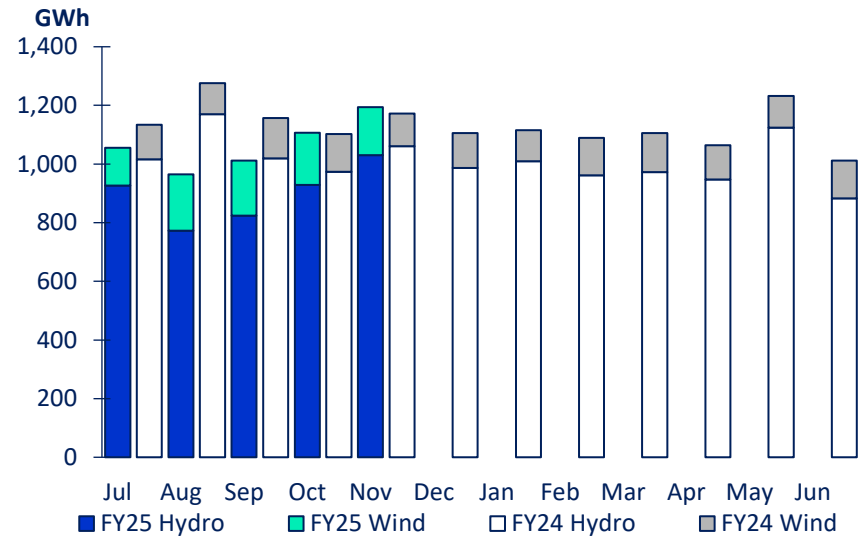
The average price Meridian received for its generation in November 2024 was -77.0% lower than the same month last year

The average price Meridian paid to supply customers in November 2024 was -69.8% lower than the same month last year

To date this financial year, the average price Meridian received for its generation is 61.0% higher than the same period last year and the average price paid to supply customers is 76.2% higher

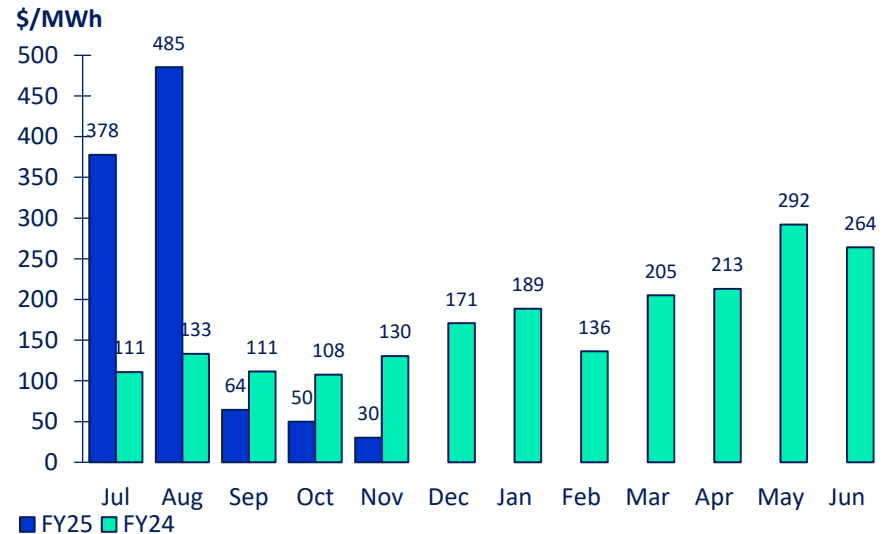
For personal use only

## MERIDIAN'S GENERATION



Source: Meridian

## MERIDIAN'S AVERAGE GENERATION PRICE\*



\*price received for Meridian’s physical generation

Source: Meridian

# Monthly operating information

	NOVEMBER 2024 MONTH	NOVEMBER 2023 MONTH	OCTOBER 2024 MONTH	SEPTEMBER 2024 MONTH	5 MONTHS TO NOVEMBER 2024	5 MONTHS TO NOVEMBER 2023
<b>New Zealand contracted sales</b>						
Residential sales volume (GWh)	125	124	144	158	819	824
Small medium business sales volume (GWh)	130	132	133	137	720	723
Agricultural sales volume (GWh)	167	150	116	88	504	511
Large business sales volume (GWh)	56	52	62	57	301	278
Corporate and industrial sales volume (GWh)	326	332	321	303	1,567	1,652
<b>Retail contracted sales volume (GWh)</b>	<b>805</b>	<b>790</b>	<b>776</b>	<b>743</b>	<b>3,910</b>	<b>3,988</b>
Average retail contracted sales price <sup>1</sup> (\$NZ/MWh)	\$135.2	\$130.1	\$136.9	\$161.6	\$151.7	\$142.2
NZAS sales volume (GWh)	275	412	265	233	1,360	2,100
Financial contract sales volumes <sup>2</sup> (GWh)	210	250	192	206	1,125	1,551
Average wholesale & financial contracts sales price <sup>3</sup> (\$NZ/MWh)	\$70.9	\$61.9	\$76.6	\$105.2	\$103.5	\$71.1
Retail customer supply volumes (GWh)	858	838	818	766	4,121	4,229
Cost to supply retail customers (\$NZ/MWh)	\$36.6	\$143.3	\$62.8	\$93.0	\$215.3	\$133.1
Cost to supply wholesale customers (\$NZ/MWh)	\$23.3	\$128.5	\$49.3	\$68.2	\$217.3	\$117.2
Cost of financial contracts (\$NZ/MWh)	\$33.8	\$127.1	\$63.5	\$91.1	\$229.8	\$118.8
Demand response payments (\$NZm)	-\$13.2	\$0.0	-\$18.7	-\$25.0	-\$80.6	\$0.0
Total New Zealand customer connections <sup>4</sup>	379,348	370,087	376,126	373,670		

See page 11 for footnotes

# Monthly operating information

	NOVEMBER 2024 MONTH	NOVEMBER 2023 MONTH	OCTOBER 2024 MONTH	SEPTEMBER 2024 MONTH	5 MONTHS TO NOVEMBER 2024	5 MONTHS TO NOVEMBER 2023
<b>New Zealand generation</b>						
Hydro generation volume (GWh)	1,030	1,061	929	825	4,482	5,240
Wind generation volume (GWh)	164	111	179	187	851	601
<b>Total generation volume (GWh)</b>	<b>1,194</b>	<b>1,172</b>	<b>1,107</b>	<b>1,012</b>	<b>5,334</b>	<b>5,842</b>
Average generation price <sup>5</sup> (\$NZ/MWh)	\$29.9	\$130.4	\$49.8	\$63.8	\$191.1	\$119.2
<b>New Zealand hedging</b>						
Hedging volume <sup>6</sup> (GWh)	277	404	403	432	2,015	2,402
Hedging cost average price (\$NZ/MWh)	\$134.2	\$105.6	\$196.2	\$231.4	\$197.1	\$126.8
Hedging spot revenue average price (\$NZ/MWh)	\$34.7	\$144.7	\$61.2	\$79.1	\$212.7	\$127.5
Future contract close outs (\$NZm)	\$0.4	-\$0.9	\$6.9	\$2.3	-\$17.1	\$17.0

See page 11 for footnotes

# Monthly operating information

	NOVEMBER 2024 MONTH	NOVEMBER 2023 MONTH	OCTOBER 2024 MONTH	SEPTEMBER 2024 MONTH	5 MONTHS TO NOVEMBER 2024	5 MONTHS TO NOVEMBER 2023
<b>New Zealand costs</b>						
Employee and Operating Costs (\$m)	23	24	21	30	125	115
Stay in Business Capital Expenditure (\$m)	8	7	6	4	26	25
Investment Capital Expenditure (\$m)	8	54	12	11	54	120
<b>Total Capital Expenditure (\$m)</b>	<b>16</b>	<b>61</b>	<b>18</b>	<b>15</b>	<b>80</b>	<b>145</b>

## Footnotes

- Contracted sales volumes and volume weighted average price received from contracted customers less distribution costs
- Derivatives sold excluding the sell-side of virtual asset swaps
- Average price of both NZAS sales volume and derivative sales volumes
- Meridian Retail and Powershop New Zealand installation control points (ICPs), excluding vacants
- Volume weighted average price received for Meridian's physical generation
- Over the counter and ASX contract volumes excluding the buy-side of virtual asset swaps

# FY25 operating information

	Jul 2024	Aug 2024	Sep 2024	Oct 2024	Nov 2024	Dec 2024	Jan 2025	Feb 2025	Mar 2025	Apr 2025	May 2025	Jun 2025	Q1 FY25	YoY change	Q2 FY25	YoY change	Q3 FY25	YoY change	Q4 FY25	YoY change
<b>New Zealand contracted sales</b>																				
Residential sales volume (GWh)	201	191	158	144	125								550	-5						
Small medium business sales volume (GWh)	159	159	137	133	130								456	-1						
Agricultural sales volume (GWh)	54	80	88	116	167								221	-20						
Large business sales volume (GWh)	61	65	57	62	56								183	+9						
Corporate and industrial sales volume (GWh)	303	314	303	321	326								920	-69						
<b>Retail contracted sales volume (GWh)</b>	<b>777</b>	<b>810</b>	<b>743</b>	<b>776</b>	<b>805</b>								<b>2,330</b>	<b>-87</b>						
Average retail contracted sales price (\$NZ/MWh)	\$162.4	\$162.9	\$161.6	\$136.9	\$135.2								\$162.3	+\$12.7						
NZAS sales volume (GWh)	327	261	233	265	275								821	-441						
Financial contract sales volumes (GWh)	295	222	206	192	210								723	-357						
Average wholesale & financial contracts sales price (\$NZ/MWh)	\$128.9	\$127.5	\$105.2	\$76.6	\$70.9								\$121.7	+\$43.9						
Retail customer supply volumes (GWh)	813	866	766	818	858								2,444	-117						
Cost to supply retail customers (\$NZ/MWh)	\$382.7	\$487.4	\$93.0	\$62.8	\$36.6								\$329.0	+\$196.4						
Cost to supply wholesale customers (\$NZ/MWh)	\$388.9	\$509.9	\$68.2	\$49.3	\$23.3								\$336.4	+\$218.7						
Cost of financial contracts (\$NZ/MWh)	\$375.3	\$494.8	\$91.1	\$63.5	\$33.8								\$330.9	+\$211.4						
Demand response payments (\$NZm)	-\$4.7	-\$19.1	-\$25.0	-\$18.7	-\$13.2								-\$48.7	-\$48.7						
Total New Zealand customer connections	369,376	371,479	373,670	376,126	379,348								373,670	+8,217						
<b>New Zealand generation</b>																				
Hydro generation volume (GWh)	927	773	825	929	1,030								2,524	-682						
Wind generation volume (GWh)	129	192	187	179	164								509	+147						
<b>Total generation volume (GWh)</b>	<b>1,056</b>	<b>965</b>	<b>1,012</b>	<b>1,107</b>	<b>1,194</b>								<b>3,033</b>	<b>-535</b>						
Average generation price (\$NZ/MWh)	\$376.2	\$483.8	\$63.8	\$49.8	\$29.9								\$306.2	+\$187.2						
<b>New Zealand hedging</b>																				
Hedging volume (GWh)	451	451	432	403	277								1,334	-168						
Hedging cost average price (\$NZ/MWh)	\$174.5	\$226.1	\$231.4	\$196.2	\$134.2								\$210.4	+\$72.6						
Hedging spot revenue average price (\$NZ/MWh)	\$346.6	\$451.9	\$79.1	\$61.2	\$34.7								\$295.5	+\$171.5						
Future contract close outs (\$NZm)	-\$13.0	-\$13.7	\$2.3	\$6.9	\$0.4								-\$24.4	-43.0						
<b>Meridian Group</b>																				
Employee and Operating Costs (\$NZ m)	26	25	30	21	23								\$80	+11						
Stay in Business Capital Expenditure (\$NZ m)	3	6	4	6	8								\$13	-0						
Investment Capital Expenditure (\$NZ m)	13	9	11	12	8								\$33	-17						
<b>Total Capital Expenditure (\$NZ m)</b>	<b>16</b>	<b>15</b>	<b>15</b>	<b>18</b>	<b>16</b>								<b>\$46</b>	<b>-18</b>						

# FY24 operating information

	Jul 2023	Aug 2023	Sep 2023	Oct 2023	Nov 2023	Dec 2023	Jan 2024	Feb 2024	Mar 2024	Apr 2024	May 2024	Jun 2024	Q1 FY24	YoY change	Q2 FY24	YoY change	Q3 FY24	YoY change	Q4 FY24	YoY change
<b>New Zealand contracted sales</b>																				
Residential sales volume (GWh)	200	201	155	144	124	123	119	112	127	136	180	178	555	-9	392	+2	358	+14	494	+27
Small medium business sales volume (GWh)	154	161	141	134	132	127	129	130	134	127	154	144	457	+9	393	-5	393	+18	425	+14
Agricultural sales volume (GWh)	53	76	112	120	150	184	210	186	158	104	73	47	241	+27	454	+29	554	+135	225	+34
Large business sales volume (GWh)	60	61	54	51	52	51	54	53	54	51	60	59	175	+2	155	+17	161	+17	170	+13
Corporate and industrial sales volume (GWh)	334	337	318	331	332	332	331	326	338	317	325	288	989	+19	995	+45	995	+1	930	-74
<b>Retail contracted sales volume (GWh)</b>	<b>800</b>	<b>836</b>	<b>781</b>	<b>781</b>	<b>790</b>	<b>818</b>	<b>843</b>	<b>806</b>	<b>811</b>	<b>735</b>	<b>793</b>	<b>717</b>	<b>2,417</b>	<b>+48</b>	<b>2,389</b>	<b>+88</b>	<b>2,461</b>	<b>+186</b>	<b>2,244</b>	<b>+15</b>
Average retail contracted sales price (\$NZ/MWh)	\$149.2	\$151.2	\$148.2	\$131.5	\$130.1	\$125.9	\$136.4	\$135.9	\$139.5	\$155.7	\$161.3	\$157.2	\$149.6	+\$15.5	\$129.1	+\$6.4	\$137.3	+\$7.9	\$158.1	+18
NZAS sales volume (GWh)	426	426	411	426	412	426	426	398	421	412	426	394	1,262	+1	1,263	+1	1,245	+9	1,232	-18
Financial contract sales volumes (GWh)	338	371	371	221	250	212	275	206	272	311	297	293	1,080	+433	683	-101	753	+76	901	-88
Average wholesale & financial contracts sales price (\$NZ/MWh)	\$78.6	\$78.4	\$76.4	\$56.2	\$61.9	\$57.5	\$75.0	\$68.8	\$74.1	\$91.7	\$89.7	\$87.9	\$77.8	+\$18.9	\$58.5	+\$3.0	\$72.8	+\$4.1	\$89.8	+13
Retail customer supply volumes (GWh)	845	892	825	829	838	879	884	851	850	778	847	733	2,561	+61	2,546	+82	2,584	+188	2,359	+46
Cost to supply retail customers (\$NZ/MWh)	\$128.6	\$144.9	\$123.3	\$124.3	\$143.3	\$186.1	\$201.4	\$155.1	\$213.8	\$230.0	\$312.3	\$284.0	\$132.6	+\$57.9	\$151.9	+\$101.1	\$190.2	+\$45.1	\$276.3	+191
Cost to supply wholesale customers (\$NZ/MWh)	\$109.2	\$132.9	\$110.7	\$105.1	\$128.5	\$171.4	\$187.1	\$136.4	\$202.5	\$212.8	\$286.4	\$269.6	\$117.7	+\$55.0	\$135.0	+\$97.2	\$176.1	+\$36.1	\$256.4	+188
Cost of financial contracts (\$NZ/MWh)	\$109.5	\$132.6	\$115.5	\$105.8	\$127.1	\$166.7	\$181.8	\$134.9	\$202.2	\$212.6	\$285.6	\$271.0	\$119.5	+\$41.4	\$132.5	+\$89.8	\$176.3	+\$48.0	\$255.7	+179
Demand response payments (\$NZm)	\$0.0	\$0.0	\$0.0	\$0.0	\$0.0	\$0.0	\$0.0	\$0.0	\$0.0	\$0.0	\$0.0	\$0.0	\$0.0	+\$0.0	\$0.0	+\$0.0	\$0.0	+\$0.0	\$0.0	+0
Total New Zealand customer connections	364,389	364,631	365,453	366,320	370,087	371,800	372,604	373,536	373,332	373,161	369,980	369,667	365,453	-3,294	371,800	+4,864	373,332	+8,072	369,667	+6,332
<b>New Zealand generation</b>																				
Hydro generation volume (GWh)	1,016	1,170	1,020	974	1,061	987	1,010	962	972	948	1,124	883	3,206	-94	3,022	-252	2,943	+250	2,955	-480
Wind generation volume (GWh)	118	107	138	128	111	119	106	127	134	117	108	128	362	+31	358	+49	367	+76	353	+82
<b>Total generation volume (GWh)</b>	<b>1,134</b>	<b>1,276</b>	<b>1,157</b>	<b>1,102</b>	<b>1,172</b>	<b>1,106</b>	<b>1,116</b>	<b>1,089</b>	<b>1,106</b>	<b>1,064</b>	<b>1,232</b>	<b>1,011</b>	<b>3,567</b>	<b>-63</b>	<b>3,380</b>	<b>-203</b>	<b>3,311</b>	<b>+326</b>	<b>3,308</b>	<b>-397</b>
Average generation price (\$NZ/MWh)	\$110.8	\$133.0	\$111.4	\$107.8	\$130.4	\$170.8	\$188.6	\$136.4	\$205.0	\$212.0	\$291.8	\$262.6	\$119.0	+\$56.8	\$136.3	+\$95.7	\$176.9	+\$45.7	\$257.2	+\$187.5
<b>New Zealand hedging</b>																				
Hedging volume (GWh)	505	539	458	496	404	458	504	438	504	470	490	516	1,502	+297	1,358	+304	1,446	+170	1,476	+244
Hedging cost average price (\$NZ/MWh)	\$142.4	\$132.3	\$139.1	\$110.9	\$105.6	\$110.1	\$127.4	\$131.9	\$139.1	\$145.0	\$151.2	\$147.7	\$137.8	+\$14.0	\$109.1	+\$8.2	\$132.9	+\$4.4	\$148.0	+\$12.6
Hedging spot revenue average price (\$NZ/MWh)	\$115.7	\$134.3	\$121.2	\$123.7	\$144.7	\$179.4	\$192.6	\$156.1	\$207.6	\$219.9	\$293.9	\$258.2	\$124.1	+\$51.1	\$148.8	+\$102.7	\$186.8	+\$45.4	\$257.8	+\$174.5
Future contract close outs (\$NZm)	\$14.0	\$3.2	\$1.4	-\$0.7	-\$0.9	\$1.0	\$2.1	\$0.0	-\$1.5	-\$1.6	-\$3.2	-\$2.2	\$18.6	-13.7	-\$0.6	-19.5	\$0.6	\$6.7	-\$6.9	-\$7.9
<b>Meridian Group</b>																				
Employee and Operating Costs (\$NZ m)	23	24	22	22	24	24	20	24	22	22	23	30	\$69	+9	\$71	+9	\$66	+\$6	\$76	+\$8
Stay in Business Capital Expenditure (\$NZ m)	3	6	4	4	7	5	6	9	8	5	7	8	\$13	+3	\$16	+5	\$23	+\$14	\$20	+\$5
Investment Capital Expenditure (\$NZ m)	16	20	15	16	54	13	12	36	35	21	35	3	\$51	+20	\$83	-36	\$84	-\$6	\$59	-\$2
<b>Total Capital Expenditure (\$NZ m)</b>	<b>19</b>	<b>26</b>	<b>19</b>	<b>20</b>	<b>61</b>	<b>18</b>	<b>18</b>	<b>45</b>	<b>44</b>	<b>26</b>	<b>42</b>	<b>11</b>	<b>\$64</b>	<b>+23</b>	<b>\$99</b>	<b>-31</b>	<b>\$107</b>	<b>+\$8</b>	<b>\$79</b>	<b>+\$3</b>

# Glossary

Hedging volumes	buy-side electricity derivatives excluding the buy-side of virtual asset swaps
Average generation price	the volume weighted average price received for Meridian's physical generation
Average retail contracted sales price	volume weighted average electricity price received from retail customers, less distribution costs
Average wholesale contracted sales price	volume weighted average electricity price received from wholesale customers (including NZAS) and financial contracts
Combined catchment inflows	combined water inflows into Meridian's Waitaki and Waiau hydro storage lakes
Cost of hedges	volume weighted average price Meridian pays for derivatives acquired
Cost to supply contracted sales	volume weighted average price Meridian pays to supply contracted customer sales and financial contracts
Contracts for Difference (CFDs)	an agreement between parties to pay the difference between the wholesale electricity price and an agreed fixed price for a specified volume of electricity. CFDs do not result in the physical supply of electricity
Customer connections	number of installation control points, excluding vacants
GWh	gigawatt hour. Enough electricity for 125 average New Zealand households for one year
Historic average inflows	the historic average combined water inflows into Meridian's Waitaki and Waiau hydro storage lakes over the last 85 years
Historic average storage	the historic average level of storage in Meridian's Waitaki catchment since 1979
HVDC	high voltage direct current link between the North and South Islands of New Zealand
ICP	New Zealand installation control points, excluding vacants
ICP switching	the number of installation control points changing retailer supplier, recorded in the month the switch was initiated
MWh	megawatt hour. Enough electricity for one average New Zealand household for 46 days
National demand	Electricity Authority's reconciled grid demand <a href="http://www.emi.ea.govt.nz">www.emi.ea.govt.nz</a>
NZAS	New Zealand Aluminium Smelters Limited
Retail sales volumes	contract sales volumes to retail customers, including both non half hourly and half hourly metered customers
Financial contract sales	sell-side electricity derivatives excluding the sell-side of virtual asset swaps
Virtual Asset Swaps (VAS)	CFDs Meridian has with Genesis Energy and Mercury New Zealand. They do not result in the physical supply of electricity