

19 November 2024

ASX Announcement

North Achilles Project, Tenure Granted NSW

For personal use only

Highlights

- Regener8 has been granted the North Achilles tenement, EL9718 (formerly ELA6755) located in NSW.
- Recent diamond drilling by Australian Copper and Gold Ltd. confirms Achilles as a significant Ag-dominant polymetallic discovery, c. 2.5km south along strike from EL9718
- Regener8 in planning phase for upcoming reconnaissance exploration, anticipated for March Quarter '25.

Regener8 Resources NL (ASX: R8R) (**Regener8** or the **Company**) is pleased advise that further to entering an agreement to acquire tenement ELA6755 (North Achilles) (ASX Announcement 30 July 2024), the tenement has now been granted to the Company as EL9718. All remaining conditions precedent have been satisfied with completion of the agreement to occur imminently.

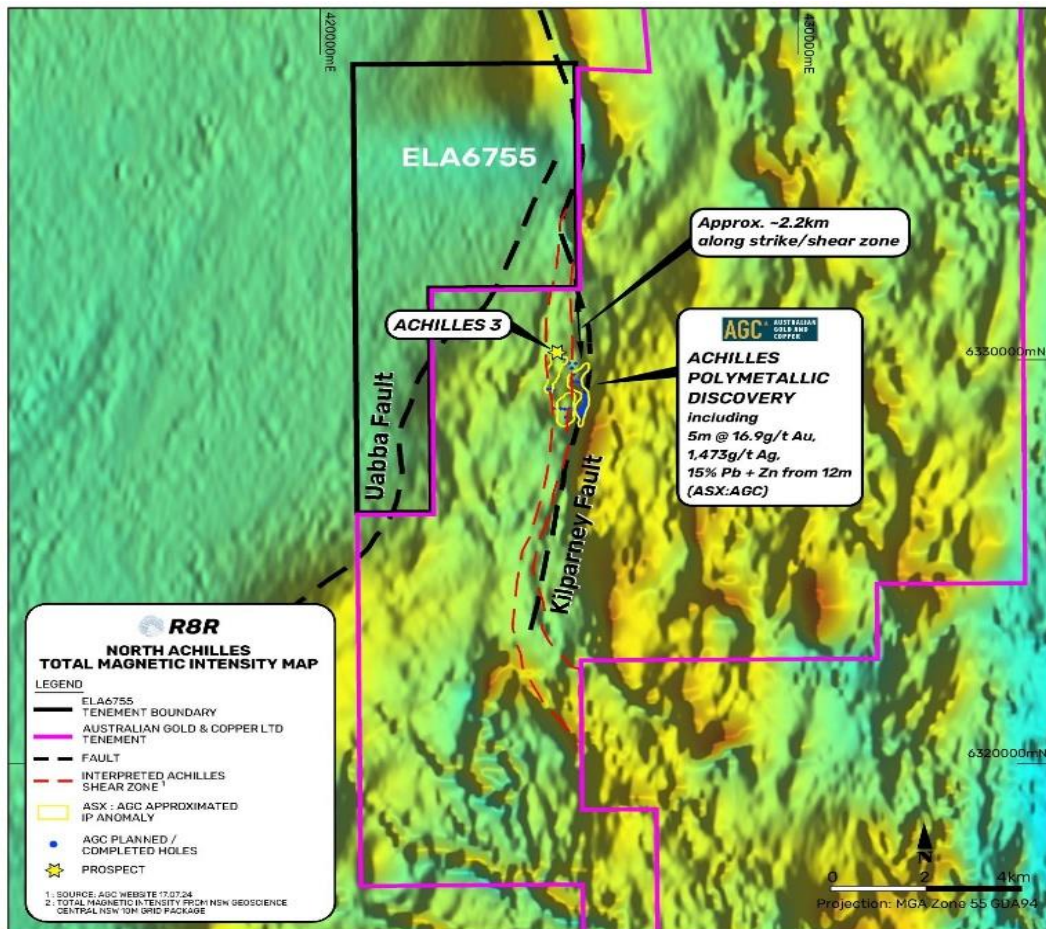


Figure 1: Total Magnetic Intensity, North Achilles Project (ASX Announcement 26 September 2024)

Regener8 Resources HQ

Unit 1, 4 Burgay Court
Osborne Park WA 6017

P +61 475 296 121
E hello@regener8resources.com.au



Exploration success from neighbouring Australian Gold and Copper (ASX:AGC) continues, with recently announced initial diamond drilling results (AGC ASX Announcement 13 November 2024). High grade mineralisation was returned from diamond drill core following up initial discovery RC drilling results, including 9.1m at 3.0g/t Au, 689g/t Ag, 1.2% Cu and 19.4% Pb+Zn from 126.5m (A3DD004). These latest assays confirm the Achilles prospect, some 2.2km south and along shear of Regener8's North Achilles tenement, to be a significant silver-dominant polymetallic discovery.

Encouragingly, and in relation Regener8's North Achilles tenement, the additional structural information gained from AGC's diamond drilling confirms the polymetallic mineralisation at Achilles to be controlled by the north-striking Achilles shear zone, which has been interpreted from geophysical data to continue north into Regener8's North Achilles tenement (Figure 2). This provides Regener8 with an immediate target area to focus initial exploration for further occurrences of Achilles-style mineralisation, in a shallowly covered and previously unexplored section of the prospective shear zone.

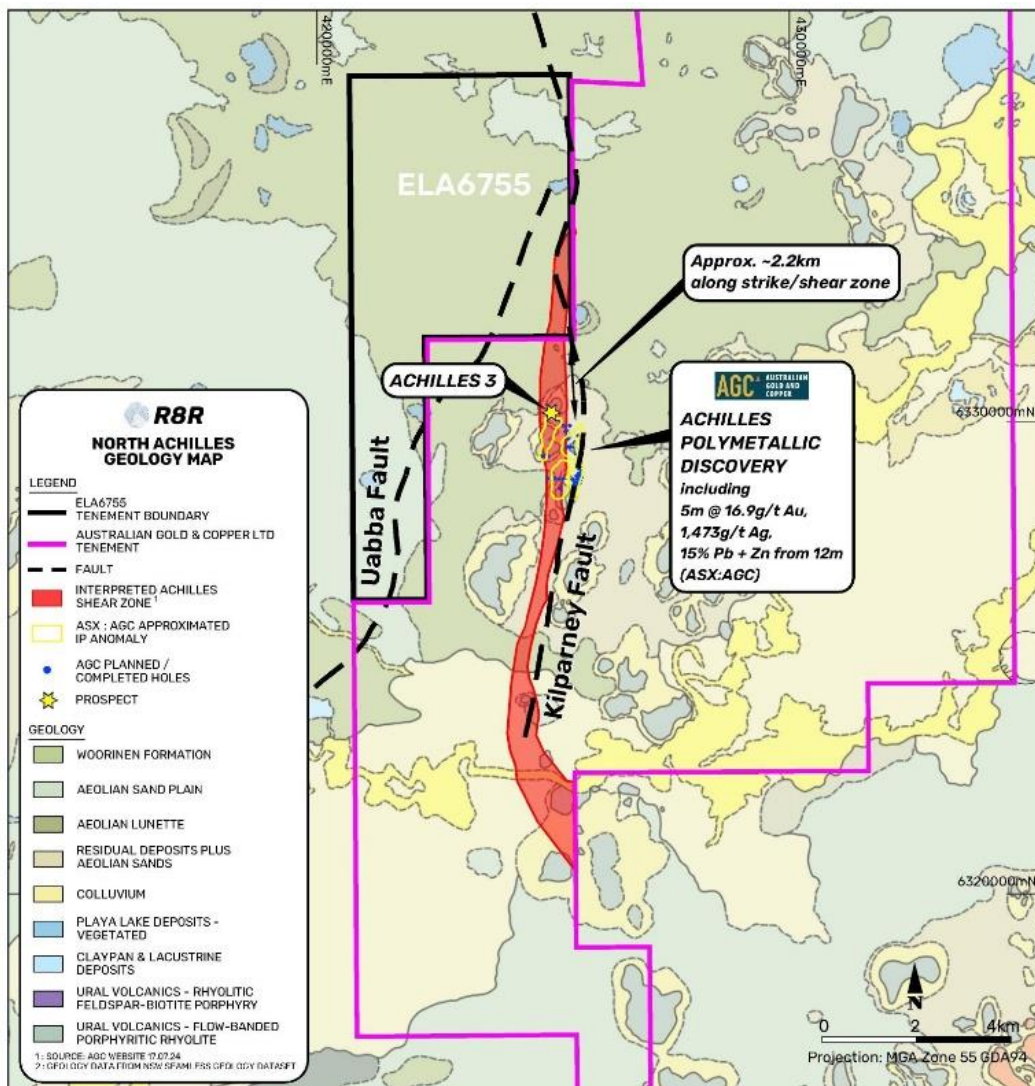


Figure 2: Local Geology, North Achilles Project (ASX Announcement 26 September 2024)

Regener8 Resources HQ

Unit 1, 4 Burgay Court
Osborne Park WA 6017

P +61 475 296 121
E hello@regener8resources.com.au

For personal use only



Regener8 is uniquely positioned to apply locally proven exploration techniques to a previously unexplored and structurally favourably area near known polymetallic mineralisation in the south Cobar region. Over the coming months, the Company will be progressing land access arrangements, meetings with landholders and relevant stakeholders and reconnaissance field work and look forward to updating the market with advancements.

Regener8 Managing Director, Stephen Foley, commented:

“Securing the North Achilles tenement is an exciting milestone for Regener8. We are fortunate to have a proactive and successful exploration neighbour in AGC who are unlocking the understanding and potential of the local geology. We hope to emulate their success over the coming year with North Achilles.”

Relevant ASX Announcements:

- 30.07.2024 “North Achilles Project Tenement Acquisition”
- 26.09.2024 “North Achilles Geological Overview”

This ASX Announcement has been authorised for release by the Board.

For further information, please contact:

Stephen Foley
Managing Director
Tel: +61 475 296 121

For personal use only



Background Regener8 Resources' Projects

Regener8's diverse and future facing exploration project portfolio consists of three key projects across Australia:

1. **North Achilles Project, South Cobar, NSW:** Polymetallic (Au, Ag, Pb, Zn)

Located immediately beside and along trend of Australian Gold and Copper's (ASX:AGC) Achilles discovery with outstanding results including **5 metres @ 16.9g/t Au, 1,667g/t Ag, 0.4% Cu & 15% Pb + Zn** (A3RC030 - AGC ASX Ann. 04.06.2024)

2. **East Ponton Project, WA:** Critical Minerals (Rare Earths, Ni, Co)

Located approximately 220km east of Kalgoorlie and nominally 40km south south-east of of known carbonatite discoveries. These include the exploration restricted Cundeelee carbonatite, described by BHP as the largest, effectively untested carbonatite in the world (port A56942, BHP 1998) and the Ponton Intrusion discovery with some of the highest-grade intersections ever found in Australia including (ASX: GXY announcement 11 January 2011) **16m @ 14.48% TREO** (PN03A), **28m @ 10.50% TREO including 6m @ 20.57% TREO** (PN10A) and **26m @ 6.99% TREO** from surface including 8m @ 13.12% TREO (PN09A)

3. **Kookynie Gold Project, WA:** Gold

Sitting within the Kookynie Gold district north of Kalgoorlie, the project hosts substantial historical workings and exploration with intersections including **2m @ 70.5 g/t Au** (RC38), **2m @ 15.4 g/t Au** (RC315) and **2m @ 11.32 g/t Au** (RC391). Regener8's 2023 program found encouraging results which included **5m @ 3.18 g/t Au** (NGRC017) and **2m @ 7.77g/t Au** (including **1m @ 14.8 g/t Au** in NGRC037).



Figure A:
Regener8 Exploration Portfolio
Project Locations

The Company confirms that all material assumptions and technical parameters underpinning the exploration results in this report continue to apply and have not materially changed. The Company is not aware of any new information or data that materially affects the information included in this release.

Regener8 Resources HQ

Unit 1, 4 Burgay Court
Osborne Park WA 6017

P +61 475 296 121
E hello@regener8resources.com.au

