



13 November 2024

RC DRILLING COMMENCED AT MONTAGUE GOLD PROJECT

HIGHLIGHTS

- Brightstar has commenced a ~6,000m Reverse Circulation drilling program at the Montague East Gold Project, targeting depth extensions and infill resource drilling at the Montague-Boulder and Whistler deposits
- Montague-Boulder and Whistler are the largest two deposits at Montague, with a combined gold resource of 4.7Mt at 1.8g/t Au for 283koz Au
- The program will take approximately four weeks to complete, before mobilising the drill rig to complete a planned drilling program at Alto's Sandstone Project upon anticipated merger completion in December
- Brightstar has also executed a Heritage Protection Agreement between Watarra Aboriginal Corporation and Brightstar Resources over the Menzies Gold Project

Brightstar Resources Limited (ASX: BTR)(**Brightstar**) is pleased to announce the commencement of its inaugural drilling program at the recently acquired¹ Montague East Gold Project (**Montague**), located 70km north of Sandstone in Western Australia's Murchison region.

With past production in the 1990's at several deposits across Montague, modern exploration has defined a global resource of 526koz Au which includes a considerable component of shallow oxide material² which is being targeted for resource growth and preliminary drilling ahead of feasibility study workstreams which are planned to occur during 2025.

Brightstar's Managing Director, Alex Rovira, commented *"With the recent completion of our significant drilling programs across our Goldfields assets in Menzies and Laverton, our exploration efforts are now focused on the Murchison assets located in the Sandstone region. With a +500koz gold endowment across the Montague East Gold Project, we look forward to targeting the largest two deposits which include the 163koz Au Montague-Boulder deposit, and the 120koz Au Whistler deposit.*

We believe these assets have a strong possibility of resource growth, and our drill programs are targeting lode extensions at depth and also infilling key areas to provide additional geological information on these deposits to increase mineral resource classification confidence. With a past production of ~150koz, the Montague East Gold Project is a key part of our Sandstone consolidation strategy and our broader aspirations of building a multi-asset and meaningful WA gold mining business."

For personal use only

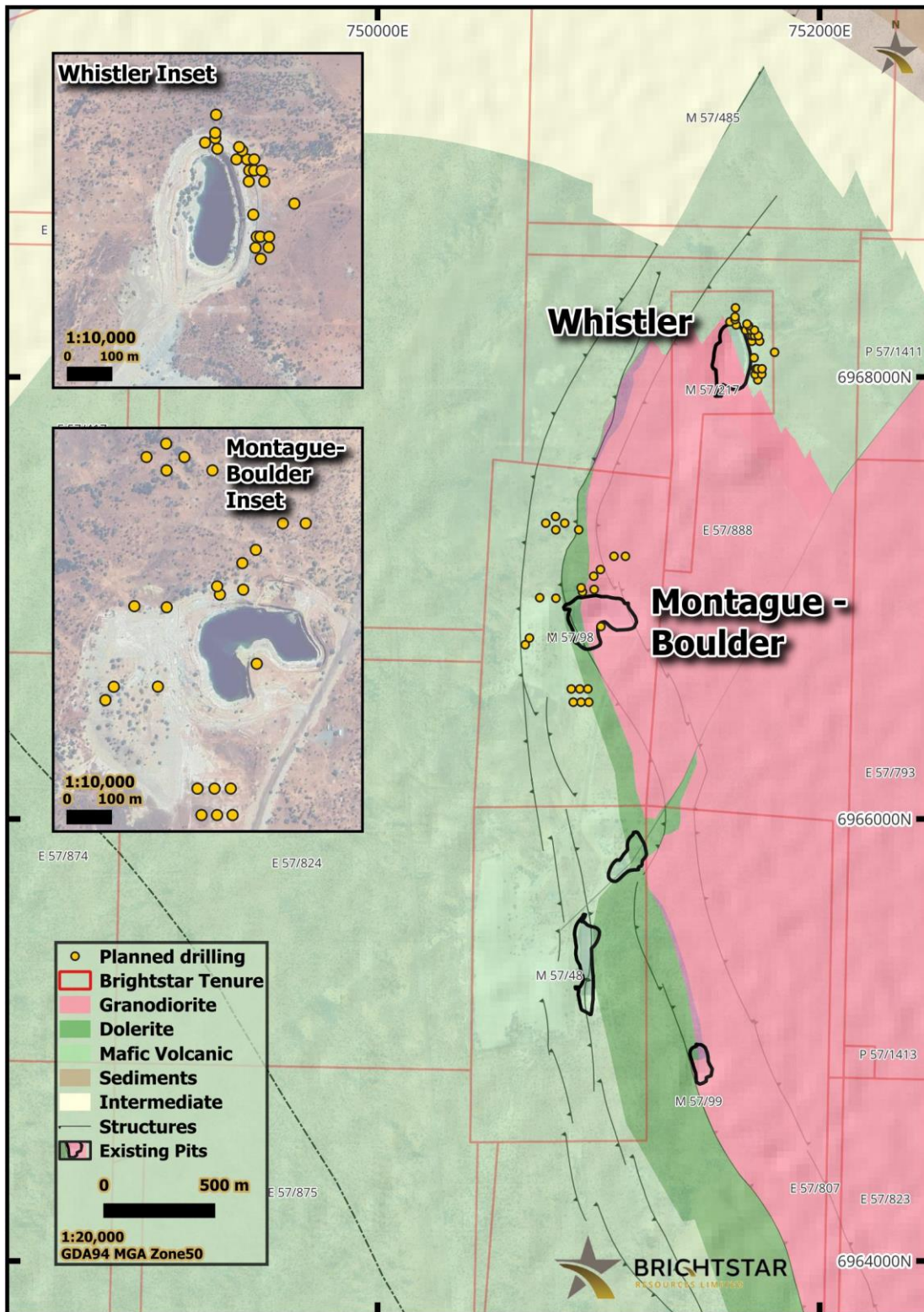


Figure 1 - Planned RC Drilling at the Whistler and Montague-Boulder Deposits



Figure 2 – RC Drill Rig at Whistler

Next steps

Brightstar will announce drilling information and assays as this is received, including the outstanding results from the Fish and Lord Byron diamond drilling programs along with RC drilling from the Montague program.

Concurrently with these drilling programs, work continues on the Definitive Feasibility Study and near-term development of mining operations at the Jasper Hills deposit.

References

1. Refer Brightstar Resources announcement dated 2 October 2024 "Brightstar completes Montague East acquisition with BTR Group Mineral Resources now 2.0Moz Au"
2. Refer Brightstar Resources ASX announcement dated 1 August 2024 "Brightstar to drive consolidation of Sandstone District"

This ASX announcement has been approved by the Managing Director on behalf of the board of Brightstar.

FOR FURTHER INFORMATION, PLEASE CONTACT:

Alex Rovira

Managing Director

Email: alex@brightstarresources.com.au

Investor Relations

Lucas Robinson

Phone: +61 408 228 889

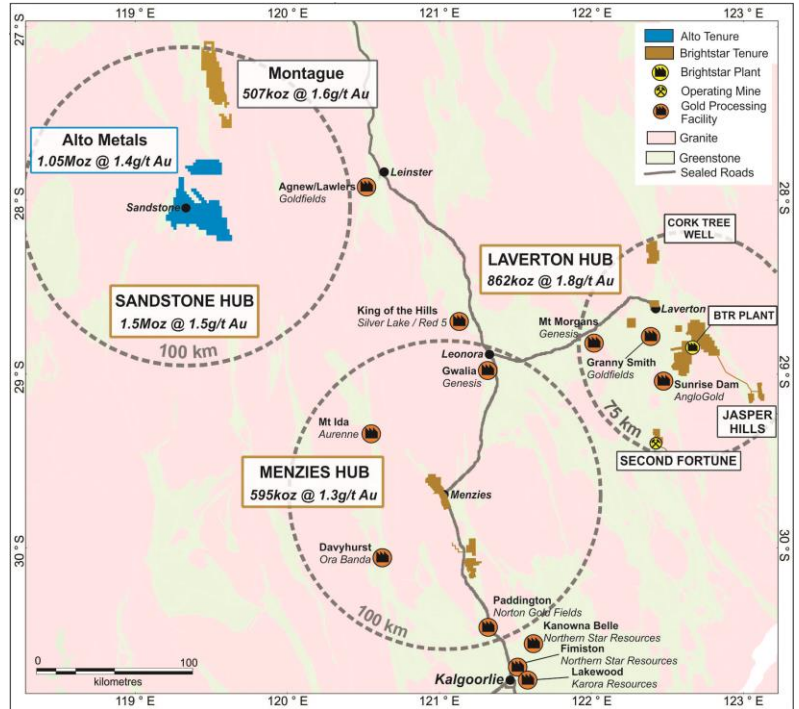
Email: lucas@corporatetorytime.com

ABOUT BRIGHTSTAR RESOURCES

Brightstar Resources Limited is a Perth-based gold development company listed on the Australian Securities Exchange (**ASX: BTR**).

The Company hosts a portfolio of high quality assets hosted in the prolific Goldfields region of Western Australia, which are ideally located proximal to significant regional infrastructure and suppliers.

The company currently operates the underground Second Fortune Gold Mine south of Laverton, and recently completed the Selkirk Mining JV at Menzies pouring first gold in March 2024.



In August 2024, Brightstar announced the execution of an agreement for the consolidation of the Sandstone district with the integration of the Montague East Gold Project into Brightstar resulting in a combined JORC Mineral Resource of **38Mt @ 1.6g/t Au for 2.0Moz Au**.

Concurrently with this transaction, Brightstar's planned merger with Alto Metals Ltd will deliver significant additional gold resources across three geographically separate hubs, providing excellent optionality for a staged development of all assets to build to a meaningful ASX-listed gold producer.

For personal use only

Consolidated JORC Resources of Laverton, Menzies & Sandstone Hubs

Location	Au Cut-off (g/t)	Measured			Indicated			Inferred			Total		
		Kt	g/t Au	Koz	Kt	g/t Au	Koz	Kt	g/t Au	Koz	Kt	g/t Au	Koz
Alpha	0.5	623	1.6	33	374	2.1	25	455	3.3	48	1,452	2.3	106
Beta	0.5	345	1.7	19	576	1.6	29	961	1.7	54	1,882	1.7	102
Cork Tree Well	0.5	-	-	-	3,036	1.6	157	3,501	1.3	146	6,537	1.4	303
Lord Byron	0.5	453	1.8	26	1,141	1.6	58	2,929	1.7	160	4,523	1.7	244
Fish	0.6	26	7.7	6	149	5.8	28	51	4.3	7	226	5.7	41
Gilt Key	0.5	-	-	-	15	2.2	1	153	1.3	6	168	1.3	8
Second Fortune (UG)	2.5	17	16.9	9	78	8.2	21	71	12.3	28	165	10.9	58
Total – Laverton		1,464	2.0	93	5,369	1.8	319	8,121	1.7	449	14,953	1.8	862
Lady Shenton System (Pericles, Lady Shenton, Stirling)	0.5	-	-	-	2,770	1.3	119	4,200	1.3	171	6,970	1.2	287
Yunndaga	0.5	-	-	-	1,270	1.3	53	2,050	1.4	90	3,320	1.3	144
Yunndaga (UG)	2.0	-	-	-	-	-	-	110	3.3	12	110	3.3	12
Aspacia	0.5	-	-	-	137	1.7	7	1,238	1.6	62	1,375	1.6	70
Lady Harriet System (Warrior, Lady Harriet, Bellenger)	0.5	-	-	-	520	1.3	22	590	1.1	21	1,110	1.2	43
Link Zone	0.5	-	-	-	145	1.2	6	470	1.0	16	615	1.1	21
Selkirk	0.5	-	-	-	30	6.3	6	140	1.2	5	170	2.1	12
Lady Irene	0.5	-	-	-	-	-	-	100	1.7	6	100	1.7	6
Total – Menzies		-	-	-	4,872	1.4	214	8,898	1.3	383	13,770	1.3	595
Montague-Boulder	0.6	-	-	-	522	4.0	67	2,556	1.2	96	3,078	1.7	163
Whistler (OP) / Whistler (UG)	0.5 / 2.0	-	-	-	-	-	-	1,700	2.2	120	1,700	2.2	120
Evermore	0.6	-	-	-	-	-	-	1,319	1.6	67	1,319	1.6	67
Achilles Nth / Airport	0.6	-	-	-	221	2.0	14	1,847	1.4	85	2,068	1.5	99
Julias ¹ (Resource)	0.6	-	-	-	1,405	1.4	61	503	1.0	16	1,908	1.3	77
Julias ² (Attributable)	0.6	-	-	-	-	-	-	-	-	-	1,431	1.3	58
Total – Montague (Global)		-	-	-	2,148	2.1	142	7,925	1.5	384	10,073	1.6	526
Total – Montague (BTR)^{1,2}					2,148	2.1	142	7,925	1.5	384	9,596	1.6	502
Total – BTR (Attributable)					12,389	1.7	675	24,944	1.5	1,216	38,319	1.6	1,959

Refer MRE Note below. Note some rounding discrepancies may occur.

Pericles, Lady Shenton & Stirling consolidated into Lady Shenton System; Warrior, Lady Harriet & Bellenger consolidated into Lady Harriet System.

Note 1: Julias is located on M57/427, which is owned 75% by Brightstar and 25% by Estuary Resources Pty Ltd

Note 2: Attributable gold ounces to Brightstar include 75% of resources of Julias as referenced in Note 1.

For personal use only

Forward-Looking Statements

This document may include forward-looking statements. Forward-looking statements include, but are not limited to, statements concerning Brightstar Resources Limited's planned exploration program and other statements that are not historical facts. When used in this document, the words such as "could," "plan," "expect," "intend," "may", "potential," "should," and similar expressions are forward-looking statements. Although Brightstar believes that its expectations reflected in these forward-looking statements are reasonable, such statements involve risks and uncertainties and no assurance can be given that further exploration will result in the estimation of a Mineral Resource.

Competent Person Statement – Exploration

The information presented here relating to exploration of the Menzies, Laverton and Sandstone Gold Project areas are based on information compiled by Mr Edward Keys, MAIG. Mr Keys is a Member of the Australasian Institute of Geoscientists (AIG) and has sufficient experience relevant to the style of mineralisation and type of deposit under consideration and to the activity he is undertaking to qualify as a "Competent Person" as that term is defined in the 2012 Edition of the "Australasian Code of Reporting of Exploration Results, Mineral Resources and Ore Reserves (JORC Code 2012)". Mr Keys is a fulltime employee of the Company in the position of Exploration Manager and has provided written consent approving the inclusion of the Exploration Results in the form and context in which they appear.

Competent Person Statement – Mineral Resource Estimates

This Announcement contains references to Brightstar's JORC Mineral Resource estimates, extracted from the ASX announcements titled "Cork Tree Well Resource Upgrade Delivers 1Moz Group MRE" dated 23 June 2023, "Maiden Link Zone Mineral Resource" dated 15 November 2023, "Aspacia deposit records maiden Mineral Resource at the Menzies Gold Project" dated 17 April 2024, "Brightstar Makes Recommended Bid for Linden Gold", dated 25 March 2024, and "Brightstar to drive consolidation of Sandstone Gold District" dated 1 August 2024.

Brightstar confirms that it is not aware of any new information or data that materially affects the information included in the original market announcements and that all material assumptions and technical parameters underpinning the Mineral Resource estimates in the relevant market announcements continue to apply and have not materially changed. The Company confirms that the form and context in which the Competent Person's findings are presented have not been materially modified from the original market announcements.

Compliance Statement

With reference to previously reported Exploration Results and Mineral Resources, the Company confirms that it is not aware of any new information or data that materially affects the information included in the original market announcement and, in the case of estimates of Mineral Resources that all material assumptions and technical parameters underpinning the estimates in the relevant market announcement continue to apply and have not materially changed. The company confirms that the form and context in which the Competent Person's findings are presented have not been materially modified from the original market announcement.

For personal use only