

ASX RELEASE

ASX Announcement
1st November 2024

Catalina Resources is an Australian diversified mineral exploration and mine development company.

Directors
Executive Chairman and Company Secretary
Sanjay Loyalka

Director
Richard Beazley

Director
Michael Busbridge

Director
Martin Bennett

ASX Code
CTN

CONTACT DETAILS

Unit 38
18 Stirling Highway
NEDLANDS WA 6009

T +61 8 61181672
E info@catalinaresources.com.au

Catalina intersects 44m at 1.01g/t gold at Laverton

Highlights

- **Broad zone of gold mineralization intersected**
- **Best intersections include 44m at 1.01g/t Au from 44m including 4m at 2.22g/t Au and 4m of 6632ppm TREO**
- **Follow up RC drilling being planned to test mineralized zone at depth**

Catalina Resources Ltd (ASX: CTN) (“Catalina” or the “Company”) is pleased to announce the assay results of the aircore drilling completed at the Laverton Project (E38/3697) in September 2024 (Figure 1,4).

A significant zone of gold mineralization (Figure 2) has been identified along the interpreted trend of the Barnicoat Shear Zone. The results include a gold intersection of **44m @ 1.01g/t Au in LVAC049** that includes **4m @ 2.22g/t Au, 4m @ 1.96g/t Au and 8m @ 1.45g/t Au**.

The mineralisation in LVAC049 extends to the end of the composite sampled interval.

LVAC049 is close to LVAC012 that returned **3m @ 1.07g/t Au** and LVAC009 that returned **1m @ 2.42g/t Au** from the previous program completed in February 2024.

The results have also extended the mineralised footprint of rare earth element (“REE”) around several intrusion related point source magnetic anomalies.

Catalina’s Executive Chairman, Sanjay Loyalka said “*We continue to be encouraged by the results at Laverton. The gold intersection in LVAC049 confirms the previous results in holes LVAC012 and LVAC009 and in combination with the intersections in LVAC038, LVAC039 and LVAC043 appears to suggest a broad NNW trending zone, primarily in the laterite*”

(supergene) and significantly upgrades the prospectivity of the gold target area.

This intersection is a material upgrade to the width and grades reported in the previous program with one four-meter interval greater than 2g/t Au. While providing confirmation of the original intersection in LVAC012 and LVAC009, it also suggests the hole is closer to the source of the gold mineralization which is interpreted to be a splay of the Barnicoat Shear Zone”.

E38/3697 is located within the Laverton Gold Province, an exceptionally well-mineralized terrain in the Eastern Goldfields, Western Australia. The region hosts several world class deposits of gold, nickel, and rare earth elements (REE) including Sunrise Dam (>10Moz Au), Granny Smith (>8Moz Au), Windara Nickel (combined 85k tonnes of nickel sulphide) and the Mt Weld REE deposit (Mineral Resource of 54.7 Mt @ 5.3% TREO). **The Mt Weld (REE) operation is only 2 kms to the south and the Granny Smith gold Mine is 8km to the west** (Figure 1).

The aircore drilling program conducted in September 2024 comprising twenty-seven holes for 1,801m (Figure 1, Appendix 1) was completed to in-fill and extend a reconnaissance drilling program conducted in March 2024 that intersected encouraging gold and REE values.

Reported assay results in this announcement are based on 4m composites taken downhole that were submitted to the Bureau Veritas Laboratory in Perth for analysis for low level gold, nickel and REE. The 1m sample splits for mineralized 4m composite samples have been collected from the field and submitted for more accurate Fire Assay analysis for gold and peroxide fusion analysis of REEs. Results will be reported when available in the next few weeks. **These assay methods are more accurate than the method used for the 4m composite samples and may upgrade the results reported.**

Gold Targets

Fifteen aircore holes were drilled in four traverses to in-fill and extend previous drilling that intersected gold mineralization along the interpreted strike of the Barnicoat Shear Zone between the Lily Pond Well and Pendergast gold prospects (Figure 2).

Previously reported wide-spaced reconnaissance holes, LVA009 to LVAC016, drilled in February 2024 identified a 300m wide supergene gold anomaly north of the Pendergast Well South gold prospect centered on intersections of **3m at 1.07g/t Au from 49m in LVAC012 and 1m at 2.42g/t Au from 75m in LVAC009¹.**

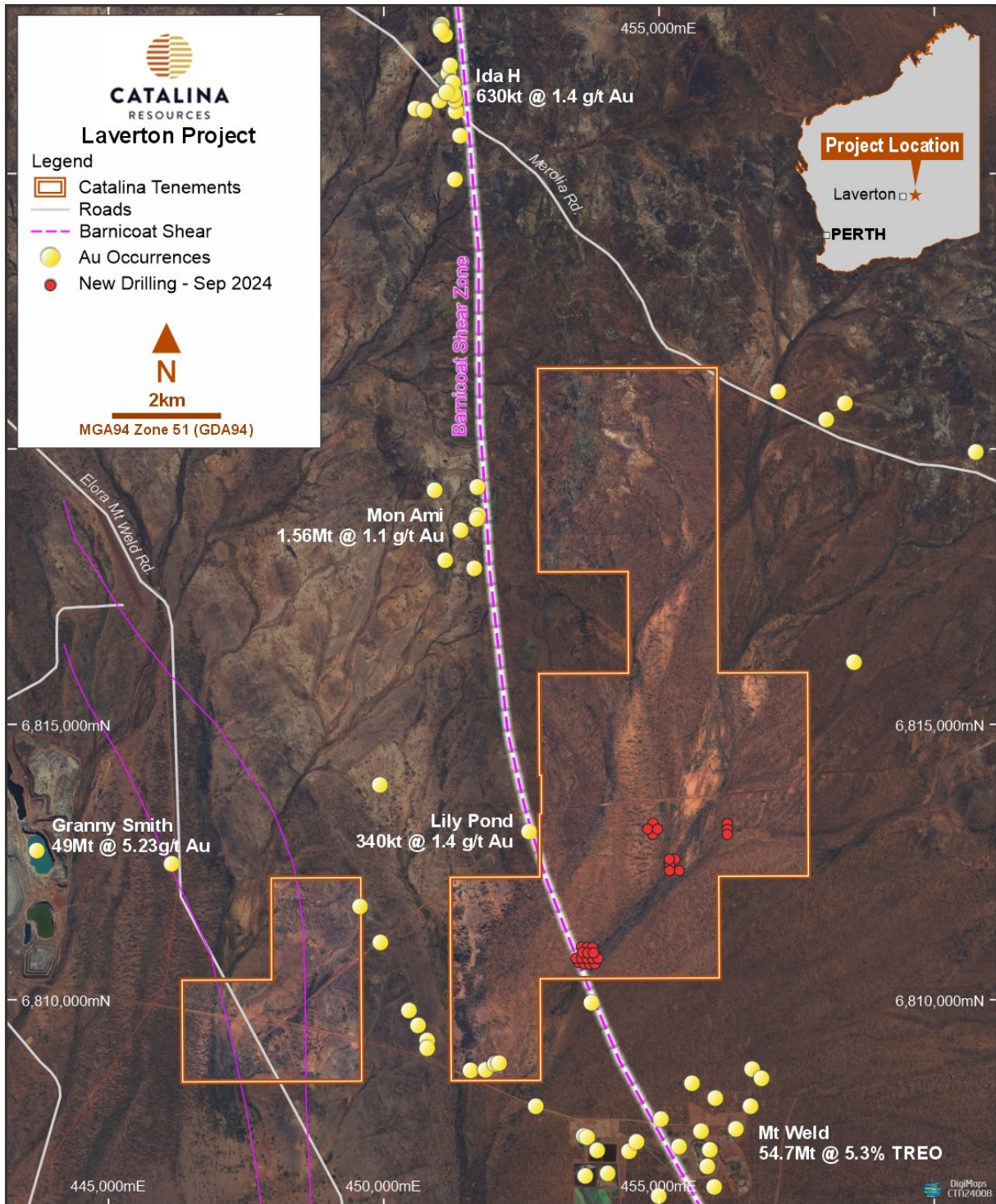


Figure 1: Location of drill collars (LVAC0026-52) within E38/3697

The follow-up aircore drilling completed in September comprised 100m spaced east-west orientated traverses north and south of the original drill traverse. The holes intersected a deeply weathered laterite profile overlying fine to medium grained sediments with intervals of fine ferruginous veining, minor quartz and alteration.

For personal use only

A hole in-filling the original traverse to 50m spacing near LVAC012 intersected a broad of mineralization in the laterite profile:

- 44m at 1.01g/t Au from 44m in LVAC049**
- Includes: 4m at 2.22g/t Au from 48m**
- 4m at 1.96g/t Au from 64m**
- 8m at 1.45g/t Au from 72m**

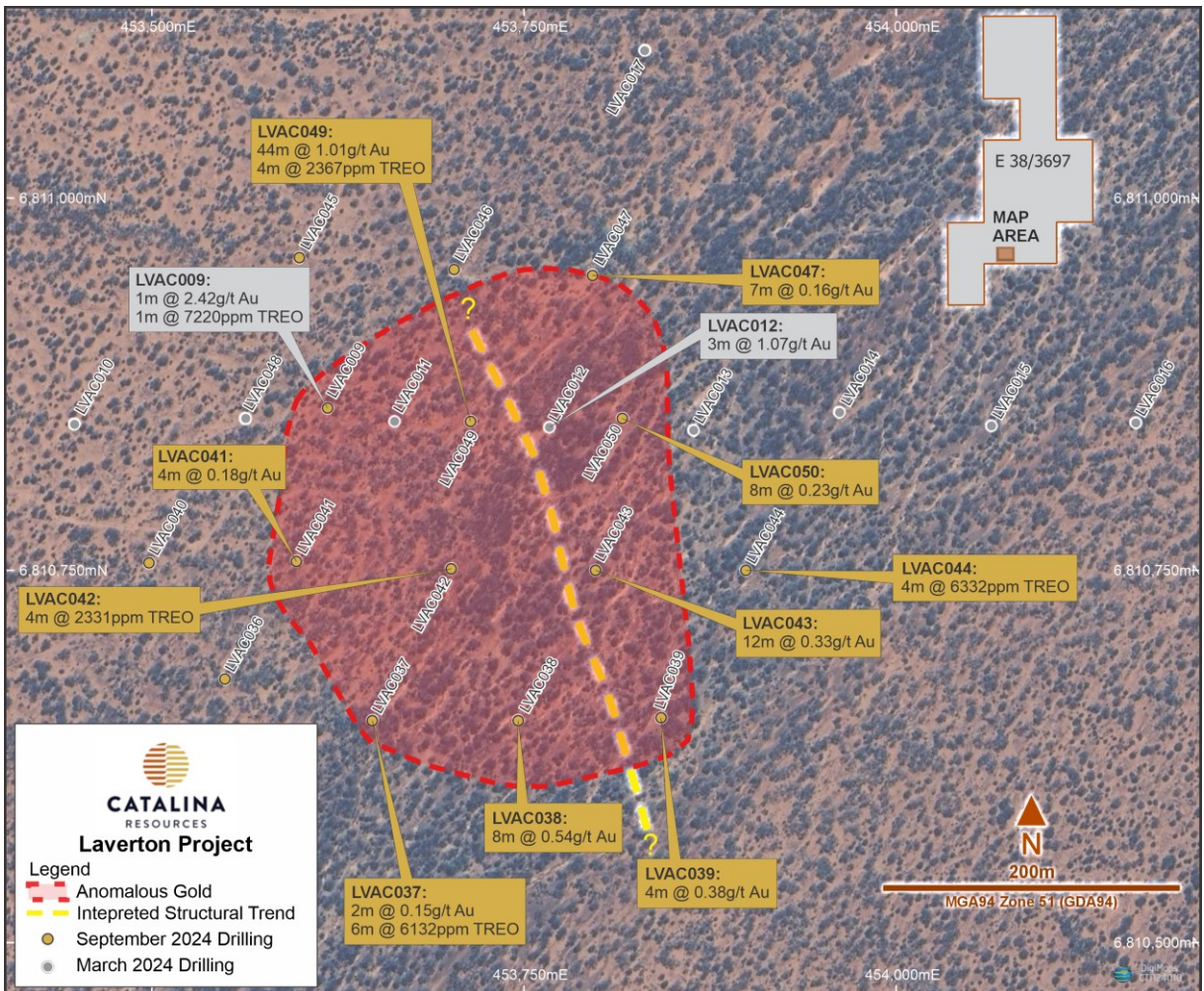


Figure 2: September 2024 aircore results – Gold

Importantly the reconnaissance drill traverses 100m and 200m south of hole LVAC049 also intersected mineralization. LVAC043 intersected **4m at 0.33g/t Au from 76m**, LVAC038 intersected **4m at 0.54g/t Au from 56m** and LVAC039 intersected **4m @ 0.38g/t Au from 64m**. These holes delineate a broad zone of gold anomalism that trends north northwest, possibly parallel to the Barnicoat Shear Zone (Figure 2).

For personal use only

REE Targets

Previous reconnaissance drilling completed in February 2024 intersected REE mineralization associated with point source magnetic anomalies modelled by Southern Geoscience Consultants. In September 2024, twelve aircore holes were drilled in a pattern around the original holes at a distance of 100m.

The drilling completed in February 2024 intersected mafic to ultramafic intrusive rocks with elevated REE values, commonly at the contact between the laterite profile and the bedrock. Best results included **LVAC023 3m @ 6794ppm TREO from 28m¹ incl. 1m @ 16,426ppm TREO** and **LVAC009 1m @ 7220ppm TREO from 43m¹**.

The follow-up drilling conducted in September 2024 has extended the area of anomalous REE mineralization associated with mafic intrusions around the point source magnetic anomalies; however, some holes intersected unmineralized sediments, indicating that the intrusions have a limited extent near surface. The best intersection is **8m at 2350ppm TREO from 24m in LVAC026** (Figure 3).

Several holes within the gold target area also intersected anomalous REE values:

8m at 6132ppm TREO from 48m in LVAC037 and

4m at 6632ppm TREO from 64 in LVAC044

The follow-up drilling has confirmed the REE mineralization identified in the initial aircore program and the correlation between the REE mineralization and the magnetic anomalies caused by mafic to ultramafic intrusions.

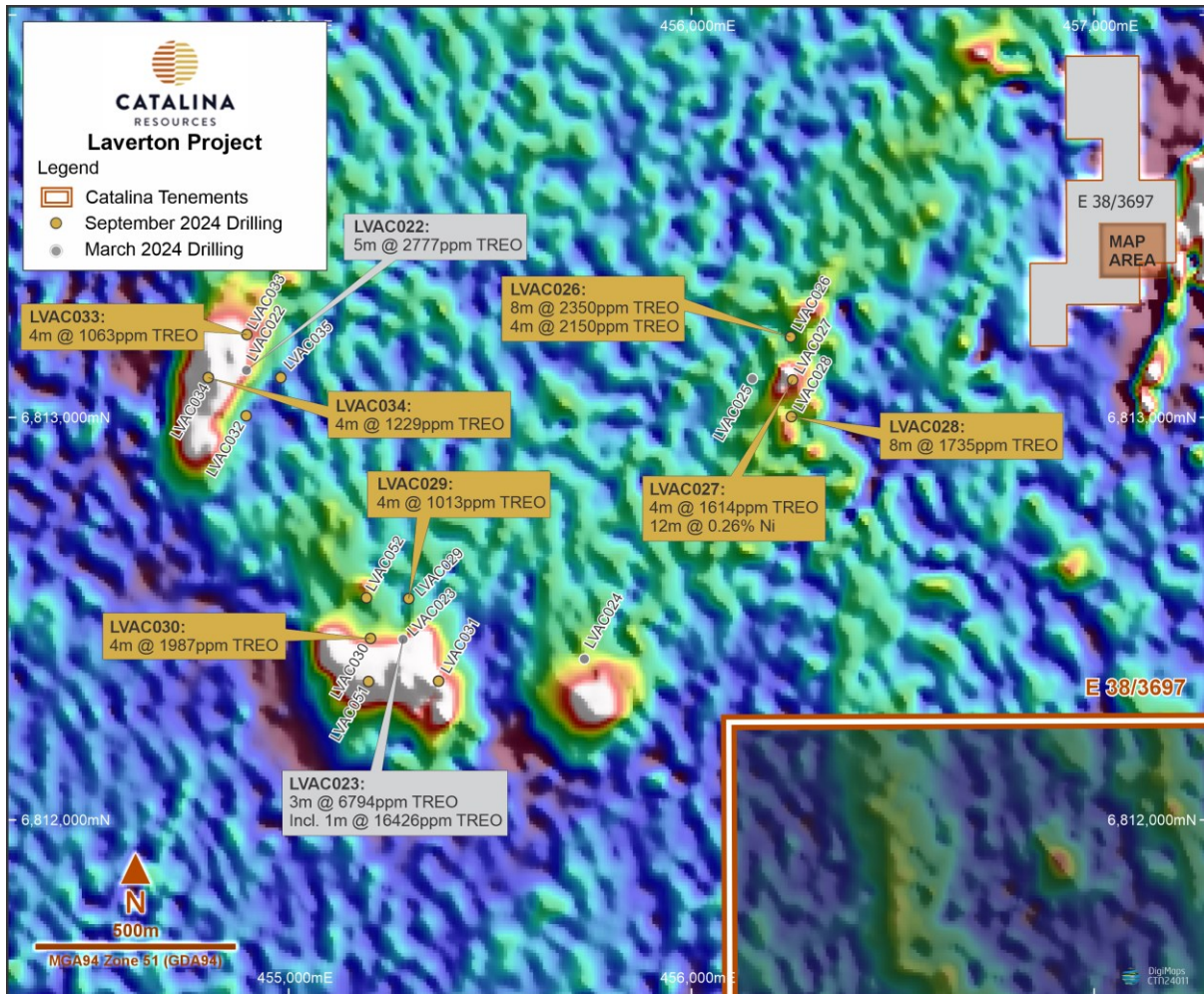


Figure 3: September 2024 aircore results – REE

Next Steps

The Company is highly encouraged by the assay results from the follow-up aircore drilling program completed in September. The gold intersection of **44m at 1.01g/t Au from 44m in LVAC049** significantly upgrades the prospectivity of the gold target area.

The September drill program in-filled the drill spacing from 100m to 50m to better define the location of the mineralized trend. The broader intersection and higher gold grades suggest that hole LVAC049 is close to the bedrock source of the gold mineralization and will assist with future targeting of drilling.

The Company considers the supergene mineralization intersected in the laterite is indicative of deeper sulphidic gold mineralization in the bedrock that has not been adequately tested previously. Previous drilling has failed to adequately explain the supergene gold mineralization.

For personal use only



Catalina will immediately start planning and seeking approvals for a program of RC drilling to test the source of the gold mineralization below the weathered laterite profile. The structural and lithological control of the mineralization is not known but it is considered to be caused by a fault splay of the Barnicoat Shear Zone that hosts the Lily Pond, Mon Ami and Ida H gold resources to the north. Fine ferruginous veining, quartz veining and alteration logged in partially weathered sediments in some of the recent aircore holes is encouraging because it is indicative of hydrothermal gold mineralization and provides strong support for the deeper drill testing.

Background

The aircore drilling in February and September 2024 targeted areas along strike from the Lily Pond Well Mineral Resource (340kt @ 1.4 g/t Au²) that is hosted by the north-south trending Barnicoat Shear Zone. The shear zone traverses the southwest corner of E38/3697 and is interpreted to link the Lily Pond Well resource with the Mon Ami (1.56Mt @ 1.1g/t Au³) and Ida H (630kt @ 1.4 g/t Au⁴) Mineral Resources to the north (Figure 1). In addition, drilling tested REE targets associated with magnetic anomalies (Figure 3).

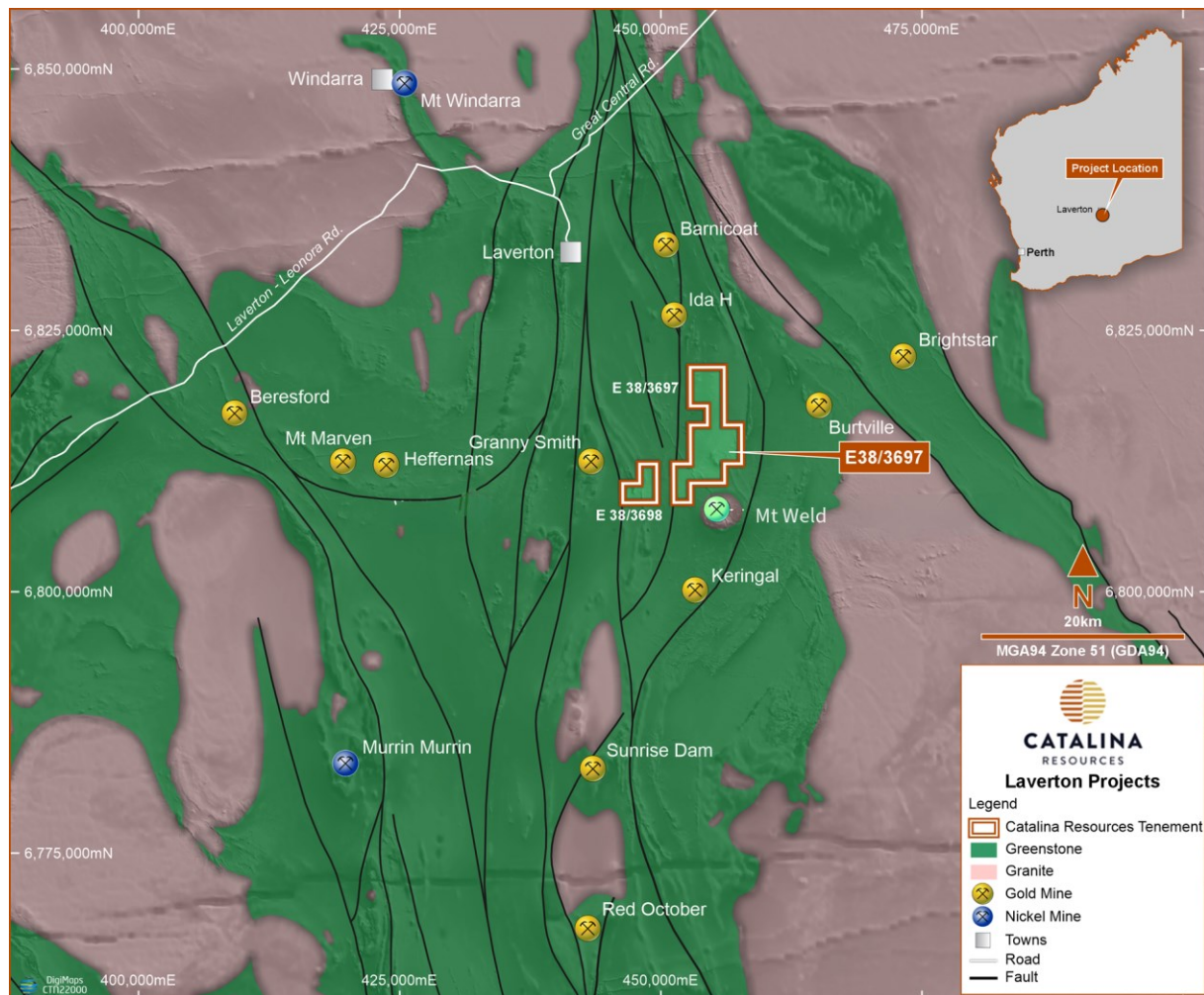


Figure 4: E38/3697 location plan

For personal use only

References

This announcement contains information extracted from ASX market announcements reported in accordance with the 2012 edition of the “Australasian Code for Reporting of Exploration Results, Mineral Resources and Ore Reserves” (“2012 JORC Code”). Further details (including 2012 JORC Code reporting tables where applicable) of Mineral Resources and exploration results referred to in this announcement can be found in the following ASX announcements and reports:

¹Catalina Resources Ltd (ASX: CTN) announcement 3rd June 2024; Resampling Upgrades Gold and REE Targets at Laverton.

²Westaway, J., Lily Pond Well Project: Annual Report for period 1 Jan 1999 to 31 Dec 1999. Sons of Gwalia WAMEX Report 1999 (A60870).

³Great Southern Mining Ltd (ASX: GSN) announcement, 21st July 2021; Indicated Mineral Resource Mon Ami.

⁴Minedex 2003: Ida H Mineral Resource: 630kt @ 1.4 g/t Au.

⁵Granny Smith Gold Mine. <https://www.mining-technology.com/projects/granny-smith-gold-mine/?cf-view>

Competent Person Statement

The review of historical exploration activities and results contained in this report is based on information compiled by Martin Bennett, a Member of the Australian Institute of Geoscientists (AIG). He is a Director of Catalina Resources Ltd. He has sufficient experience which is relevant to the style of mineralisation and types of deposits under consideration and to the activity which he is undertaking to qualify as a Competent Person as defined in the 2012 edition of the Australasian Code for Reporting of Exploration Results, Mineral Resources and Ore Reserves (the JORC Code).

Martin Bennett has consented to the inclusion in the report of the matters based on his information in the form and context in which it appears.

The Company confirms that it is not aware of any new information or data that materially affects the information in the original reports, and that the form and context in which the Competent Person’s findings are presented have not been materially modified from the original reports.

Where the Company refers to the Mineral Resources in this report (referencing previous releases made to the ASX), it confirms that it is not aware of any new information or data that materially affects the information included in that announcement and all material assumptions and technical parameters underpinning the Mineral Resource estimate with that announcement continue to apply and have not materially changed.

ABOUT CATALINA RESOURCES LIMITED

Catalina Resources Limited is an Australian diversified mineral exploration and mine development company whose vision is to create shareholder value through the successful exploration of prospective gold, base metal, lithium and iron ore projects and the development of these projects into production.

The release of this document to the market has been authorised by the Board of Catalina Resources Ltd.

APPENDIX 1

Aircore Drill Hole Coordinates

Tenement	Hole ID	Drill Type	MGA East	MGA North	Inclination	Azimuth	Elevation	Depth (m)	Hole Diameter	MGA Grid ID
E38/3697	LVAC026	AC	456246	6813200	-90	0	450	43	85mm	MGA 94 Z51
E38/3697	LVAC027	AC	456251	6813093	-90	0	450	44	85mm	MGA 94 Z51
E38/3697	LVAC028	AC	456248	6812002	-90	0	450	63	85mm	MGA 94 Z51
E38/3697	LVAC029	AC	455298	6812550	-90	0	450	67	85mm	MGA 94 Z51
E38/3697	LVAC030	AC	455203	6812451	-90	0	450	69	85mm	MGA 94 Z51
E38/3697	LVAC031	AC	455372	6812345	-90	0	450	24	85mm	MGA 94 Z51
E38/3697	LVAC032	AC	454894	6813004	-90	0	450	58	85mm	MGA 94 Z51
E38/3697	LVAC033	AC	454896	6813206	-90	0	450	60	85mm	MGA 94 Z51
E38/3697	LVAC034	AC	454800	6813099	-90	0	450	54	85mm	MGA 94 Z51
E38/3697	LVAC035	AC	454980	6813099	-90	0	450	63	85mm	MGA 94 Z51
E38/3697	LVAC036	AC	453549	6810677	-60	270	450	75	85mm	MGA 94 Z51
E38/3697	LVAC037	AC	453648	6810649	-60	270	450	66	85mm	MGA 94 Z51
E38/3697	LVAC038	AC	453746	6810649	-60	270	450	81	85mm	MGA 94 Z51
E38/3697	LVAC039	AC	453842	6810651	-60	270	450	79	85mm	MGA 94 Z51
E38/3697	LVAC040	AC	453498	6810755	-60	270	450	84	85mm	MGA 94 Z51
E38/3697	LVAC041	AC	453597	6810756	-60	270	450	78	85mm	MGA 94 Z51
E38/3697	LVAC042	AC	453701	6810751	-60	270	450	90	85mm	MGA 94 Z51
E38/3697	LVAC043	AC	453798	6810750	-60	270	450	93	85mm	MGA 94 Z51
E38/3697	LVAC044	AC	453899	6810750	-60	270	450	90	85mm	MGA 94 Z51
E38/3697	LVAC045	AC	453599	6810960	-60	270	450	75	85mm	MGA 94 Z51
E38/3697	LVAC046	AC	453703	6810952	-60	270	450	49	85mm	MGA 94 Z51
E38/3697	LVAC047	AC	453796	6810948	-60	270	450	51	85mm	MGA 94 Z51
E38/3697	LVAC048	AC	453618	6810859	-60	270	450	87	85mm	MGA 94 Z51
E38/3697	LVAC049	AC	453714	6810850	-60	270	450	93	85mm	MGA 94 Z51
E38/3697	LVAC050	AC	453816	6810852	-60	270	450	96	85mm	MGA 94 Z51
E38/3697	LVAC051	AC	455198	6812344	-90	0	450	15	85mm	MGA 94 Z51
E38/3697	LVAC052	AC	455193	6812552	-90	0	450	54	85mm	MGA 94 Z51

For personal use only



APPENDIX 2

Summary of Gold Intersections

BHID	Intersection
LVAC033	56-60m 4m @ 0.11g/t Au
LVAC037	64-66m 2m @ 0.15g/t Au
LVAC038	48-52m 4m @ 0.13g/t Au
	56-64m 8m @ 0.54g/t Au
	76-80m 4m @ 0.17g/t Au
LVAC039	64-68m 4m @ 0.38g/t Au
	72-78m 6m @ 0.12g/t Au
LVAC041	52-56m 4m @ 0.18g/t Au
LVAC043	68-72m 4m @ 0.15g/t Au
	76-88m 12m @ 0.33g/t Au
LVAC047	44-51m 7m @ 0.16g/t Au
LVAC049	44-88m 44m @ 1.01g/t Au
	Incls. 48-52m 4m @ 2.22g/t Au
	Incls. 64-68m 4m @ 1.96g/t Au
	Incls. 72-80m 8m @ 1.45g/t Au
LVAC050	68-72m 4m @ 0.14g/t Au
	76-84m 8m @ 0.23g/t Au

Summary of REE Intersections

BHID	Intersection
LVAC026	24-32m 8m @ 2350ppm
	36-40m 4m @ 2150ppm
LVAC027	32-36m 4m @ 1614ppm
LVAC028	40-48m 8m @ 1735ppm
LVAC029	48-52m 4m @ 1013ppm
LVAC030	56-60m 4m @ 1987ppm
LVAC033	40-44m 4m @ 1063ppm
LVAC034	52-54m 2m @ 1229ppm
LVAC037	48-56m 8m @ 6132ppm
	64-66m 2m @ 1730ppm
LVAC038	36-40m 4m @ 1843ppm
	44-52m 8m @ 1717ppm
LVAC041	36-48m 12m @ 1631ppm
LVAC042	56-60m 4m @ 2331ppm
LVAC043	76-80m 4m @ 1034ppm
LVAC044	64-68m 4m @ 6632ppm
LVAC045	48-52m 4m @ 1264ppm
LVAC046	36-40m 4m @ 1190ppm
LVAC047	44-48m 4m @ 1213ppm
LVAC048	52-56m 4m @ 1059ppm
LVAC049	84-88m 4m @ 2367ppm
LVAC050	64-68m 4m @ 1024ppm

For personal use only



APPENDIX 3: Assay Results – Au (ppb), Cu, Co, Ni, Cr (ppm)

BHID	SN	From	To	Au	Cu	Co	Ni	Cr
				AR102	AR102	AR102	AR102	AR102
LVAC026	12507	24	28	2	250	145	494	742
LVAC026	12508	28	32	-1	206	477	1680	652
LVAC026	12509	32	36	2	126	89	1250	940
LVAC026	12510	36	40	-1	200	69	376	230
LVAC027	12519	28	32	-1	254	142	404	960
LVAC027	12520	32	36	-1	384	600	2820	1490
LVAC027	12521	36	40	2	204	339	3650	1740
LVAC027	12522	40	44	1	140	89	1510	1560
LVAC028	12523	0	4	14	46	15	72	286
LVAC028	12532	36	40	-1	278	19	416	640
LVAC028	12533	40	44	-1	324	420	1370	1070
LVAC028	12534	44	48	9	268	437	2700	1660
LVAC028	12535	48	52	17	140	120	1650	1240
LVAC028	12536	52	56	32	142	84	726	902
LVAC030	12565	36	40	-1	46	3	32	156
LVAC030	12566	40	44	-1	226	1460	116	250
LVAC030	12567	44	48	-1	110	359	148	444
LVAC030	12568	48	52	-1	134	236	164	756
LVAC030	12569	52	56	21	100	127	270	1800
LVAC030	12570	56	60	30	164	135	256	3370
LVAC030	12571	60	64	5	138	88	226	2830
LVAC030	12572	64	68	5	86	93	274	2920
LVAC030	12573	68	69	3	60	68	294	3040
LVAC031	12574	0	4	4	72	28	86	376
LVAC031	12575	4	8	12	50	12	42	360
LVAC031	12576	8	12	4	36	17	94	1180
LVAC031	12577	12	16	2	40	31	168	1430
LVAC031	12578	16	20	2	32	69	220	1370
LVAC031	12579	20	24	-1	40	136	430	1390
LVAC032	12580	0	4	3	48	17	68	356
LVAC033	12605	40	44	-1	32	22	42	234
LVAC033	12606	44	48	4	154	124	424	2290
LVAC033	12607	48	52	-1	560	162	1020	1970
LVAC033	12608	52	56	24	494	86	1140	1020
LVAC033	12609	56	60	107	132	128	1720	1740
LVAC034	12610	0	4	9	54	18	122	378
LVAC034	12620	40	44	3	52	17	90	330
LVAC034	12621	44	48	37	44	184	610	1620
LVAC034	12622	48	52	5	24	269	2100	4390
LVAC034	12623	52	54	2	62	175	1900	3750
LVAC035	12624	0	4	4	54	61	368	764
LVAC037	12674	60	64	5	188	76	304	208
LVAC037	12675	64	66	150	160	65	278	222
LVAC038	12676	0	4	6	52	16	66	294
LVAC038	12687	44	48	12	250	113	118	104
LVAC038	12688	48	52	134	220	145	248	96
LVAC038	12689	52	56	9	146	122	190	76
LVAC038	12690	56	60	971	154	98	196	182
LVAC038	12691	60	64	105	174	108	232	170
LVAC038	12692	64	68	6	154	63	150	148
LVAC038	12693	68	72	55	146	68	148	142
LVAC038	12694	72	76	49	154	66	156	144
LVAC038	12695	76	80	177	152	56	134	154
LVAC038	12696	80	81	31	82	53	126	144
LVAC039	12710	52	56	2	226	188	294	86
LVAC039	12711	56	60	71	186	116	210	144
LVAC039	12712	60	64	18	146	92	174	130
LVAC039	12713	64	68	378	190	112	202	142
LVAC039	12714	68	72	29	164	100	164	122
LVAC039	12715	72	76	102	126	86	140	110
LVAC039	12716	76	78	152	168	86	130	76
LVAC040	12717	0	4	4	48	19	58	352
LVAC041	12746	32	36	3	76	18	126	298

For personal use only



BHID	SN	From	To	Au	Cu	Co	Ni	Cr
				AR102	AR102	AR102	AR102	AR102
LVAC041	12747	36	40	2	136	90	456	1750
LVAC041	12748	40	44	12	126	487	560	1920
LVAC041	12749	44	48	7	104	310	526	2510
LVAC041	12750	48	52	11	88	286	654	2890
LVAC041	12751	52	56	183	80	375	728	2540
LVAC041	12752	56	60	45	90	238	650	2090
LVAC041	12753	60	64	13	140	90	278	352
LVAC042	12779	84	88	19	122	79	130	128
LVAC042	12780	88	90	56	160	79	182	152
LVAC043	12781	0	4	6	40	14	56	260
LVAC043	12794	52	56	10	174	68	164	74
LVAC043	12795	56	60	66	200	112	286	148
LVAC043	12796	60	64	38	196	76	204	116
LVAC043	12797	64	68	42	156	81	172	86
LVAC043	12798	68	72	150	152	37	114	124
LVAC043	12799	72	76	50	218	100	192	88
LVAC043	12800	76	80	522	146	98	220	122
LVAC043	12801	80	84	365	132	70	204	146
LVAC043	12802	84	88	116	152	60	174	148
LVAC043	12803	88	93	69	152	52	172	144
LVAC044	12804	0	4	8	42	14	64	228
LVAC046	12855	36	40	28	470	805	498	162
LVAC046	12856	40	44	57	140	74	296	148
LVAC046	12857	44	48	57	132	60	184	140
LVAC046	12858	48	49	60	122	68	176	144
LVAC047	12859	0	4	8	44	15	58	338
LVAC047	12869	40	44	5	168	132	192	86
LVAC047	12870	44	48	104	144	66	166	116
LVAC047	12871	48	51	219	240	67	302	148
LVAC048	12872	0	4	6	44	15	62	320
LVAC048	12882	40	44	2	170	5	64	136
LVAC048	12883	44	48	2	182	12	216	1500
LVAC048	12884	48	52	4	168	104	464	2140
LVAC048	12885	52	56	2	120	187	974	2190
LVAC048	12886	56	60	-1	48	95	1230	2620
LVAC048	12887	60	64	2	42	135	1160	2620
LVAC048	12888	64	68	2	124	158	1030	2540
LVAC048	12889	68	72	-1	108	90	566	2360
LVAC048	12890	72	76	6	156	96	416	1540
LVAC048	12891	76	80	-1	292	228	244	216
LVAC049	12904	40	44	5	190	117	144	106
LVAC049	12905	44	48	213	240	236	294	66
LVAC049	12906	48	52	2220	174	44	178	180
LVAC049	12907	52	56	314	248	81	240	120
LVAC049	12908	56	60	748	238	53	250	160
LVAC049	12909	60	64	1960	334	26	120	140
LVAC049	12910	64	68	927	192	44	124	108
LVAC049	12911	68	72	697	198	66	192	144
LVAC049	12912	72	76	1060	198	39	110	108
LVAC049	12913	76	80	1840	202	26	98	96
LVAC049	12914	80	84	464	208	60	202	164
LVAC049	12915	84	88	687	256	69	260	268
LVAC050	12917	0	4	55	60	19	72	292
LVAC050	12918	4	8	13	50	13	56	368
LVAC050	12933	64	68	14	154	104	142	84
LVAC050	12934	68	72	136	150	84	126	102
LVAC050	12935	72	76	69	142	86	162	96
LVAC050	12936	76	80	287	148	29	102	148
LVAC050	12937	80	84	173	166	63	122	118
LVAC050	12938	84	88	97	160	93	202	144
LVAC050	12939	88	92	75	196	55	166	142
LVAC050	12940	92	96	31	170	67	150	134
LVAC051	12941	0	4	9	68	31	82	272
LVAC051	12942	4	8	7	76	28	118	1050
LVAC051	12943	8	12	10	62	262	1070	2850
LVAC051	12944	12	15	5	32	289	1830	3020
LVAC052	12945	0	4	7	52	20	94	378

For personal use only

Assay Results – REE (ppm)

BHID	SN	From	To	Sc ₂ O ₃	Y ₂ O ₃	La ₂ O ₃	CeO ₂	Pr ₂ O ₃	Nd ₂ O ₃	Sm ₂ O ₃	Eu ₂ O ₃	Gd ₂ O ₃	Tb ₂ O ₃	Dy ₂ O ₃	Ho ₂ O ₃	Er ₂ O ₃	Tm ₂ O ₃	Yb ₂ O ₃	Lu ₂ O ₃	TREO
				AR102	AR102	AR102	AR102	AR102	AR102	AR102	AR102	AR102	AR102	AR102	AR102	AR102	AR102	AR102	AR102	AR102
LVAC026	12506	20	24	15.8	2.1	8.5	14.2	1.8	6.5	1.0	0.3	0.7	0.1	0.4	0.1	0.2	0.0	0.2	0.0	52.0
LVAC026	12507	24	28	53.7	235.0	373.0	934.5	154.9	640.1	136.9	37.3	110.3	12.7	60.7	9.4	21.5	2.3	13.4	1.7	2797.5
LVAC026	12508	28	32	41.9	175.3	343.7	736.8	87.8	334.6	58.2	15.5	48.7	5.9	29.5	5.0	11.9	1.3	7.0	0.9	1904.0
LVAC026	12509	32	36	33.9	57.5	120.8	235.8	31.5	110.1	20.8	5.6	17.3	2.1	10.8	1.8	4.4	0.5	2.7	0.4	655.9
LVAC026	12510	36	40	42.3	132.1	403.5	828.9	109.5	424.4	74.4	19.0	57.8	6.5	30.3	4.6	10.0	1.0	5.2	0.6	2150.1
LVAC026	12511	40	43	15.8	17.1	38.9	78.8	10.3	40.0	7.7	2.0	6.3	0.8	3.7	0.6	1.4	0.1	0.9	0.1	224.7
LVAC027	12512	0	4	24.1	37.5	60.9	114.8	15.6	58.3	10.9	2.8	9.7	1.2	6.4	1.1	2.9	0.3	2.0	0.3	348.8
LVAC027	12513	4	8	41.6	10.1	10.7	24.1	3.2	12.2	2.6	0.7	2.4	0.3	2.0	0.4	1.1	0.1	0.9	0.1	112.5
LVAC027	12518	24	28	66.4	3.6	6.3	14.5	1.7	6.5	1.3	0.4	1.2	0.1	0.8	0.1	0.4	0.0	0.3	0.0	103.7
LVAC027	12519	28	32	88.7	40.4	40.5	201.4	14.9	64.5	15.9	4.9	15.5	2.2	11.8	1.9	4.7	0.6	3.9	0.5	512.1
LVAC027	12520	32	36	46.0	718.8	54.0	271.4	27.3	131.8	42.3	15.7	77.0	11.7	86.7	19.8	55.1	6.9	43.3	6.5	1614.4
LVAC027	12521	36	40	47.1	61.7	14.3	34.1	4.4	19.5	4.5	1.4	6.5	0.9	6.0	1.4	4.0	0.5	3.2	0.5	210.1
LVAC027	12522	40	44	47.6	32.9	55.5	113.0	14.4	56.0	11.1	2.9	9.7	1.2	6.4	1.1	2.9	0.3	2.1	0.3	357.3
LVAC028	12523	0	4	25.0	21.6	27.3	52.8	6.8	25.4	5.0	1.2	4.6	0.6	3.5	0.7	1.9	0.2	1.4	0.2	178.2
LVAC028	12532	36	40	117.2	10.3	2.4	40.8	1.2	5.6	1.9	0.6	2.2	0.4	3.0	0.6	1.9	0.3	2.3	0.3	191.0
LVAC028	12533	40	44	53.2	166.4	341.3	779.8	119.7	483.9	92.9	25.2	76.6	8.8	43.2	6.9	16.2	1.9	11.8	1.5	2229.3
LVAC028	12534	44	48	47.6	513.1	123.2	72.0	36.4	171.4	39.1	14.0	66.4	9.1	59.6	13.2	38.0	4.6	29.2	4.5	1241.2
LVAC028	12535	48	52	43.0	62.0	19.6	24.8	4.8	20.9	4.8	1.6	7.0	1.0	6.4	1.4	4.1	0.5	3.2	0.5	205.7
LVAC028	12536	52	56	35.3	25.4	44.9	95.4	11.3	43.5	8.5	2.3	7.7	1.0	5.1	0.9	2.2	0.3	1.4	0.2	285.3
LVAC028	12537	56	60	28.5	51.4	69.3	133.9	16.2	62.0	12.3	3.3	11.2	1.5	8.3	1.6	4.2	0.5	3.2	0.4	407.9
LVAC028	12538	60	63	17.0	8.4	4.8	8.6	1.2	4.6	1.1	0.4	1.3	0.2	1.3	0.3	0.8	0.1	0.6	0.1	50.7
LVAC029	12544	20	24	3.7	1.4	2.1	3.0	0.3	1.2	0.2	0.1	0.2	0.0	0.2	0.0	0.1	0.0	0.1	0.0	12.7
LVAC029	12545	24	28	10.4	23.0	191.2	509.6	31.7	89.4	12.2	2.8	8.8	1.0	5.0	0.8	1.8	0.2	1.1	0.1	889.2
LVAC029	12546	28	32	9.7	6.3	5.0	41.9	0.9	3.3	0.7	0.2	1.0	0.1	1.0	0.2	0.5	0.1	0.4	0.1	71.5
LVAC029	12547	32	36	11.8	3.1	3.2	46.4	0.8	2.7	0.6	0.2	0.6	0.1	0.6	0.1	0.3	0.0	0.4	0.0	70.9
LVAC029	12548	36	40	15.8	2.9	3.5	36.1	0.8	2.6	0.6	0.2	0.6	0.1	0.6	0.1	0.3	0.0	0.3	0.0	64.7
LVAC029	12549	40	44	16.0	12.3	73.0	201.4	25.3	87.9	15.4	3.6	8.9	1.0	4.2	0.6	1.2	0.1	0.7	0.1	451.7
LVAC029	12550	44	48	14.9	8.2	24.8	154.7	9.7	39.4	7.7	1.9	4.6	0.5	2.5	0.4	0.9	0.1	0.7	0.1	271.1
LVAC029	12551	48	52	17.2	26.4	150.1	520.7	46.7	179.6	30.6	7.4	18.3	2.0	8.5	1.2	2.4	0.3	1.5	0.2	1013.1
LVAC029	12552	52	56	12.7	33.9	40.7	281.2	13.6	63.2	14.6	4.1	13.0	1.6	8.4	1.4	3.7	0.5	3.0	0.4	496.0
LVAC029	12553	56	60	9.2	30.7	11.6	112.7	4.2	20.2	5.2	1.7	6.7	0.9	5.1	1.0	2.8	0.3	2.0	0.3	214.7
LVAC029	12554	60	64	12.9	56.1	73.0	190.3	23.6	92.7	18.2	5.1	18.3	2.1	10.8	1.8	4.5	0.5	3.0	0.4	513.4
LVAC029	12555	64	67	14.9	24.9	25.8	70.7	7.5	30.1	6.0	1.7	5.9	0.7	4.1	0.8	2.1	0.3	1.6	0.2	197.4
LVAC030	12561	20	24	10.4	0.9	1.4	2.0	0.3	1.0	0.2	0.1	0.2	0.0	0.2	0.0	0.1	0.0	0.1	0.0	17.1
LVAC030	12562	24	28	62.1	31.2	130.2	281.2	40.8	136.4	24.2	6.1	16.1	1.9	9.4	1.5	3.6	0.5	3.1	0.4	748.8
LVAC030	12563	28	32	106.8	10.9	24.3	187.9	6.7	23.4	3.9	0.9	2.7	0.3	2.0	0.4	1.1	0.2	1.1	0.2	372.8
LVAC030	12564	32	36	72.1	7.4	14.5	156.0	3.8	13.2	2.4	0.6	1.9	0.3	1.6	0.3	0.8	0.1	0.7	0.1	275.9
LVAC030	12565	36	40	45.9	3.6	2.2	41.6	0.7	2.5	0.6	0.2	0.6	0.1	0.8	0.2	0.5	0.1	0.5	0.1	100.1
LVAC030	12566	40	44	38.4	27.1	73.8	359.8	21.4	72.9	14.5	3.8	11.0	1.5	7.8	1.3	3.5	0.5	3.3	0.4	641.0
LVAC030	12567	44	48	55.7	27.4	37.3	144.9	10.4	39.5	8.4	2.5	7.8	1.2	7.6	1.5	4.2	0.6	4.1	0.6	353.6
LVAC030	12568	48	52	61.2	36.3	40.8	71.1	9.0	34.7	7.1	2.3	8.3	1.2	7.1	1.4	3.8	0.5	3.2	0.5	288.4
LVAC030	12569	52	56	60.3	31.1	27.6	48.6	6.4	25.0	5.3	1.7	5.8	0.8	4.7	0.9	2.6	0.3	2.0	0.3	223.3
LVAC030	12570	56	60	85.9	74.4	477.4	859.6	88.5	292.7	39.6	9.8	27.8	3.2	15.6	2.5	5.8	0.6	3.7	0.5	1987.5
LVAC030	12571	60	64	45.1	19.3	72.3	132.6	14.2	48.5	8.1	2.2	6.5	0.8	3.9	0.7	1.7	0.2	1.3	0.2	357.6
LVAC030	12572	64	68	54.9	33.7	205.3	407.7	47.6	167.9	22.9	5.2	14.4	1.5	7.2	1.2	3.1	0.4	2.5	0.3	975.7
LVAC030	12573	68	69	41.3	9.5	18.3	36.6	4.3	16.0	2.8	0.8	2.3	0.3	1.7	0.3	0.9	0.1	0.8	0.1	136.0
LVAC031	12578	16	20	29.9	7.9	42.8	25.7	6.2	21.1	2.6	0.7	2.2	0.2	1.2	0.2	0.6	0.1	0.4	0.1	141.8
LVAC031	12579	20	24	19.2	22.5	123.2	180.5	24.8	76.5	10.9	2.7	7.6	0.8	4.0	0.7	1.6	0.2	1.0	0.1	476.3
LVAC032	12580	0	4	24.7	15.7	17.8	32.3	4.6	16.8	3.3	0.8	3.1	0.4	2.6	0.5	1.5	0.2	1.2	0.2	125.7
LVAC032	12587	28	32	26.1	0.8	4.2	187.9	1.2	3.9	0.8	0.2	0.5	0.1	0.3	0.0	0.1	0.0	0.1	0.0	226.0
LVAC032	12588	32	36	26.1	22.2	246.3	62.4	49.5	157.4	22.9	5.2	14.6	1.5	6.6	1.0	2.0	0.2	1.2	0.1	619.2
LVAC032	12589	36	40	23.0	11.3	38.2	59.6	8.4	28.1	5.0	1.3	4.1	0.5	2.3	0.4	0.8	0.1	0.5	0.1	183.6
LVAC032	12590	40	44	14.1	6.9	46.7	153.5	10.3	33.6	5.4	1.4	3.8	0.4	2.1	0.3	0.8	0.1	0.5	0.1	280.1
LVAC032	12591	44	48	25.8	26.2	82.7	235.8	21.5	73.1	13.0	3.5	10.0	1.2	6.0	1.0	2.4	0.3	1.8	0.2	504.4
LVAC032	12592	48	52	21.0	14.1	12.0	16.3	2.4	9.7	2.1	0.7	2.7	0.4	2.3	0.5	1.3	0.2	1.1	0.2	87.0
LVAC032	12593	52	56	25.3	6.5	7.8	12.3	1.8	7.0	1.4	0.4	1.6	0.2	1.2	0.2	0.6	0.1	0.6	0.1	67.1
LVAC032	12594	56	58	26.2	16.6	111.3	206.3	22.0	68.3	9.8	2.4	6.3	0.7	3.4	0.6	1.5	0.2	1.2	0.2	477.1
LVAC033	12595	0	4	21.9	17.3	17.7	31.2	4.3	15.5	3.1	0.7	3.1	0.4	2.5	0.5	1.4	0.2	1.1	0.2	121.1
LVAC033	12604	36	40	34.2	1.9	6.8	138.8	1.4	4.8	1.0	0.3	0.7	0.1	0.5	0.1	0.2	0.0	0.1	0.0	191.0
LVAC033	12605	40	44	34.4	31.6	319.1	314.4	66.1	220.4	30.9	7.3	19.9	2.2	10.1	1.5	3.3	0.4	2.2	0.3	1063.9
LVAC033	12606	44	48	40.3	33.5	67.0	104.6	14.3	51.8	9.6	2.6	8.7	1.1	6.2	1.1	3.0	0.4	2.2	0.3	346.6
LVAC033	12607	48	52	40.5	9.4	5.8	8.4	1.5	6.0	1.4	0.4	1.4	0.2	1.3	0.3	0.8	0.1	0.8	0.1	78.5
LVAC033	12608	52	56	35.0	20.8	46.9	112.2	12.0	45.0	8.1	1.9	6.2	0.7	3.4	0.6	1.5	0.2	1.0	0.1	29

BHD	SN	From	To	Sc ₂ O ₃	Y ₂ O ₃	La ₂ O ₃	CeO ₂	PrO _{1.1}	Nd ₂ O ₃	Sm ₂ O ₃	Eu ₂ O ₃	Gd ₂ O ₃	Tb ₂ O ₃	Dy ₂ O ₃	Ho ₂ O ₃	Er ₂ O ₃	Tm ₂ O ₃	Yb ₂ O ₃	Lu ₂ O ₃	TREO
				AR102	AR102	AR102	AR102	AR102	AR102	AR102	AR102	AR102	AR102	AR102	AR102	AR102	AR102	AR102	AR102	AR102
LVAC035	12636	48	52	19.8	5.4	24.6	86.2	6.4	21.6	3.5	0.8	2.2	0.3	1.3	0.2	0.5	0.1	0.4	0.1	173.5
LVAC035	12637	52	56	19.8	14.4	70.3	86.7	16.0	57.8	9.7	2.3	6.7	0.7	3.2	0.5	1.2	0.1	0.9	0.1	290.5
LVAC035	12638	56	60	7.5	10.7	52.4	67.8	11.0	40.1	6.7	1.6	4.9	0.5	2.3	0.4	0.9	0.1	0.6	0.1	207.6
LVAC036	12647	28	32	27.6	3.4	9.5	60.9	2.6	9.4	1.7	0.5	1.2	0.2	0.9	0.2	0.4	0.0	0.3	0.0	118.9
LVAC036	12648	32	36	65.8	11.1	12.9	127.7	5.1	19.9	4.3	1.1	3.3	0.5	3.0	0.6	1.6	0.2	1.5	0.2	258.9
LVAC036	12649	36	40	43.9	13.1	15.6	380.7	7.4	30.0	6.5	1.7	4.7	0.7	3.9	0.7	2.0	0.3	1.9	0.2	513.2
LVAC036	12650	40	44	57.5	21.5	25.5	60.5	11.9	49.7	9.7	2.5	7.6	1.0	5.0	0.9	2.4	0.3	1.9	0.2	258.2
LVAC036	12651	44	48	64.6	12.5	13.1	84.2	5.1	21.0	4.4	1.1	3.6	0.5	3.0	0.6	1.6	0.2	1.4	0.2	217.2
LVAC036	12652	48	52	64.0	69.2	30.7	45.7	13.1	58.8	11.6	3.1	11.3	1.5	9.1	1.9	5.3	0.6	4.0	0.5	330.4
LVAC036	12653	52	56	49.2	172.7	35.3	47.8	16.6	77.4	18.8	5.8	22.9	3.5	22.7	4.8	14.0	1.7	10.5	1.4	505.1
LVAC036	12654	56	60	57.2	69.5	39.8	73.2	10.4	43.1	10.0	3.0	11.9	1.7	10.0	2.0	5.5	0.7	4.1	0.5	342.6
LVAC036	12655	60	64	52.9	45.5	25.7	54.5	6.3	25.2	6.0	1.7	6.8	1.0	6.6	1.4	4.0	0.5	3.2	0.4	241.7
LVAC036	12656	64	68	45.9	41.5	18.3	45.9	5.1	20.3	4.8	1.5	5.5	0.9	5.9	1.2	3.7	0.5	3.2	0.4	204.5
LVAC036	12657	68	72	52.3	54.1	37.8	80.8	9.0	34.4	7.3	2.1	7.3	1.1	7.6	1.6	5.0	0.7	4.9	0.7	306.6
LVAC036	12658	72	75	52.5	30.0	4.5	11.9	1.7	7.9	2.6	0.8	3.7	0.6	4.4	1.0	3.0	0.4	2.6	0.4	127.8
LVAC037	12667	32	36	35.0	3.0	5.4	9.9	1.0	3.5	0.7	0.2	0.7	0.1	0.7	0.1	0.4	0.1	0.5	0.1	61.4
LVAC037	12668	36	40	51.8	10.6	43.9	241.9	15.0	58.1	10.4	2.4	5.7	0.7	3.3	0.5	1.4	0.2	1.3	0.2	447.3
LVAC037	12669	40	44	64.7	13.2	62.4	180.5	22.0	80.7	15.1	3.7	9.3	1.0	4.4	0.7	1.6	0.2	1.2	0.2	460.9
LVAC037	12670	44	48	68.4	24.8	134.9	239.5	28.4	87.3	14.0	3.6	10.4	1.3	6.2	1.0	2.4	0.3	1.7	0.2	624.3
LVAC037	12671	48	52	71.5	162.6	1560.1	2627.9	248.1	811.5	98.0	22.9	64.5	7.4	34.7	5.5	12.2	1.3	7.4	0.8	5736.4
LVAC037	12672	52	56	68.1	196.9	1794.7	2959.5	285.6	922.3	113.2	26.2	79.0	8.5	41.0	6.6	15.3	1.6	9.2	1.1	6528.7
LVAC037	12673	56	60	58.1	90.7	108.2	200.2	21.7	68.1	12.3	3.6	13.6	2.1	14.0	2.8	8.1	1.0	6.5	0.9	611.8
LVAC037	12674	60	64	58.4	68.2	144.3	288.6	36.2	122.4	22.7	6.0	18.9	2.4	12.9	2.3	5.8	0.7	4.2	0.5	794.5
LVAC037	12675	64	66	50.5	109.0	411.7	727.0	74.3	249.5	33.1	8.2	25.3	3.3	18.3	3.3	8.7	1.0	6.3	0.8	1730.2
LVAC038	12676	0	4	25.2	16.1	36.8	64.7	7.0	23.9	4.2	1.0	3.6	0.5	2.9	0.6	1.6	0.2	1.2	0.2	189.6
LVAC038	12684	32	36	32.1	7.7	16.1	81.0	5.8	23.4	4.8	1.2	3.4	0.4	2.3	0.4	1.1	0.1	1.0	0.1	181.0
LVAC038	12685	36	40	57.1	147.3	244.0	668.0	93.4	405.8	76.2	19.7	57.4	6.8	34.0	5.6	14.3	1.7	10.5	1.3	1843.1
LVAC038	12686	40	44	48.5	34.4	22.9	116.0	9.4	43.8	10.1	2.8	8.7	1.2	6.7	1.3	3.6	0.5	3.0	0.4	313.2
LVAC038	12687	44	48	56.0	158.8	438.7	911.2	104.7	405.8	63.3	16.2	48.0	5.7	29.2	5.1	13.6	1.7	10.8	1.4	2270.1
LVAC038	12688	48	52	51.7	114.2	220.5	431.0	49.4	184.2	29.3	8.0	26.5	3.5	20.2	3.9	11.1	1.4	9.1	1.3	1165.5
LVAC038	12689	52	56	47.7	35.3	27.2	62.0	5.8	22.3	4.7	1.4	5.5	0.8	5.1	1.1	3.1	0.4	2.4	0.3	225.1
LVAC038	12690	56	60	44.8	22.1	30.8	62.4	6.5	25.5	5.0	1.4	4.7	0.6	3.6	0.7	1.9	0.2	1.6	0.2	202.4
LVAC038	12691	60	64	52.5	22.2	29.0	65.1	6.1	22.4	4.3	1.2	4.0	0.6	3.5	0.7	2.1	0.3	1.8	0.3	216.0
LVAC038	12692	64	68	57.5	27.4	11.1	25.8	3.0	12.6	3.2	1.0	4.0	0.6	4.3	1.0	2.8	0.4	2.4	0.3	157.4
LVAC038	12693	68	72	52.2	45.7	27.7	56.0	7.1	28.9	7.0	2.0	7.6	1.1	6.8	1.4	3.8	0.5	3.1	0.4	251.1
LVAC038	12694	72	76	55.1	37.5	24.3	49.9	6.2	25.7	6.2	1.8	6.9	1.0	6.4	1.3	3.6	0.4	2.9	0.4	229.4
LVAC038	12695	76	80	44.6	34.3	50.6	105.0	12.1	46.2	9.3	2.4	8.6	1.2	6.4	1.2	3.2	0.4	2.3	0.3	328.1
LVAC038	12696	80	81	41.6	17.4	5.1	13.0	1.7	7.6	2.2	0.6	2.7	0.4	2.9	0.6	1.8	0.2	1.6	0.2	99.7
LVAC039	12703	24	28	21.2	2.9	17.0	35.5	3.2	10.4	1.7	0.4	1.1	0.1	0.6	0.1	0.3	0.0	0.3	0.0	94.7
LVAC039	12704	28	32	96.6	9.0	33.9	110.0	9.3	33.3	6.2	1.5	4.2	0.6	2.8	0.5	1.2	0.2	1.1	0.1	310.6
LVAC039	12705	32	36	71.6	4.1	3.8	45.4	1.1	4.3	1.1	0.3	1.1	0.2	1.1	0.2	0.6	0.1	0.6	0.1	135.7
LVAC039	12706	36	40	75.3	6.9	21.9	68.8	5.9	21.3	3.7	1.0	2.8	0.4	1.9	0.3	0.9	0.1	0.8	0.1	212.1
LVAC039	12707	40	44	118.9	17.5	39.2	454.4	13.8	50.7	10.3	2.7	7.3	1.1	6.1	1.0	2.8	0.4	2.7	0.3	729.2
LVAC039	12708	44	48	62.7	71.6	29.4	131.4	10.0	40.7	9.7	3.1	12.0	1.9	12.5	2.5	7.3	0.9	6.4	0.8	403.2
LVAC039	12709	48	52	61.1	70.4	22.4	58.0	8.6	38.8	9.4	2.9	11.3	1.7	11.2	2.3	6.7	0.9	5.8	0.8	312.2
LVAC039	12710	52	56	55.8	123.1	33.1	78.1	16.1	76.0	19.1	5.7	20.4	3.0	18.1	3.7	10.5	1.3	9.0	1.2	474.3
LVAC039	12711	56	60	64.6	142.2	15.8	39.2	9.6	50.3	14.4	4.9	20.6	3.2	21.0	4.4	12.9	1.6	10.7	1.5	417.0
LVAC039	12712	60	64	60.7	103.9	17.9	49.9	7.6	30.8	11.3	3.9	15.6	2.5	16.1	3.4	9.7	1.2	8.2	1.1	351.0
LVAC039	12713	64	68	58.6	76.8	56.5	114.2	12.2	47.2	10.8	3.4	12.7	2.0	12.7	2.6	7.6	1.0	6.8	0.9	426.1
LVAC039	12714	68	72	59.2	63.5	16.4	42.7	5.1	22.2	6.1	2.0	8.5	1.4	9.2	2.0	5.8	0.7	5.0	0.7	250.5
LVAC039	12715	72	76	46.6	59.2	114.4	230.9	27.1	88.8	16.0	4.4	13.6	1.7	9.1	1.7	4.6	0.6	3.7	0.5	622.9
LVAC039	12716	76	78	37.1	26.5	34.4	71.7	7.9	30.2	6.3	1.8	6.1	0.8	4.7	0.9	2.5	0.3	2.1	0.3	233.8
LVAC040	12724	28	32	22.4	1.0	29.8	83.5	1.9	4.3	0.7	0.2	0.4	0.1	0.3	0.0	0.1	0.0	0.1	0.0	144.9
LVAC040	12725	32	36	37.4	1.5	3.2	210.0	0.8	2.5	0.6	0.2	0.5	0.1	0.5	0.1	0.2	0.0	0.2	0.0	257.9
LVAC040	12726	36	40	82.1	14.1	6.8	245.6	4.3	17.1	4.8	1.3	4.0	0.7	4.0	0.7	2.1	0.3	2.1	0.3	390.2
LVAC040	12727	40	44	57.1	28.1	88.1	128.9	36.1	120.1	20.5	4.9	12.9	1.7	9.4	1.6	4.2	0.5	3.6	0.4	518.0
LVAC040	12728	44	48	58.1	77.3	115.8	197.7	49.2	191.2	32.0	8.1	24.1	3.2	17.7	3.2	8.5	1.0	6.7	0.9	794.8
LVAC040	12729	48	52	60.9	189.2	89.6	140.0	25.2	95.8	20.2	6.3	27.1	3.5	21.0	4.4	11.8	1.3	7.9	1.0	705.3
LVAC040	12730	52	56	67.3	79.0	28.2	44.9	6.7	28.8	7.2	2.4	10.1	1.5	9.7	2.0	5.8	0.7	4.4	0.6	299.3
LVAC040	12731	56	60	67.2	34.2	6.7	17.4	2.2	10.3	3.2	1.1	4.6	0.8	5.2	1.1	3.3	0.4	2.8	0.4	161.0
LVAC040	12732	60	64	68.9	53.7	50.2	100.0	12.1	46.8	9.8	2.8	9.6	1.4	8.1	1.6	4.5	0.5	3.6	0.5	374.0
LVAC040	12733	64	68	58.8	36.2	36.7	78.7	8.8	33.7	7.3	2.1	7.1	1.0	6.3	1.2	3.4	0.4	2.7	0.4	284.8
LVAC040	12734	68	72	61.5	29.1	11.2	30.3	3.4	14.6	3.9	1.3	4.8	0.8	5.0	1.0	2.9	0.4	2.4	0.3	172.9
LVAC040																				

APPENDIX 4: JORC Code, 2012 Edition – Table 1

Section 1 Sampling Techniques and Data

Criteria	JORC Code explanation	Commentary
Sampling techniques	<p><i>Nature and quality of sampling (eg cut channels, random chips, or specific specialised industry standard measurement tools appropriate to the minerals under investigation, such as down hole gamma sondes, or handheld XRF instruments, etc). These examples should not be taken as limiting the broad meaning of sampling.</i></p> <p><i>Include reference to measures taken to ensure sample representivity and the appropriate calibration of any measurement tools or systems used. Aspects of the determination of mineralisation that are Material to the Public Report.</i></p> <p><i>In cases where ‘industry standard’ work has been done this would be relatively simple (eg ‘reverse circulation drilling was used to obtain 1 m samples from which 3 kg was pulverised to produce a 30 g charge for fire assay’). In other cases, more explanation may be required, such as where there is coarse gold that has inherent sampling problems. Unusual commodities or mineralization types (eg submarine nodules) may warrant disclosure of detailed information.</i></p>	<ul style="list-style-type: none"> • Catalina Resources completed 27 Aircore drill holes for 1,801m at its Laverton Project, near Laverton WA. • Drilling is located within Catalina’s E38/3697 and was completed in September 2024. • Sampling of the Aircore holes was conducted by taking 4m composites downhole. A 1m split was also taken using a splitter for follow up analysis if required. • The majority of the 1m and 4m samples taken to a depth of 60m were dry and weighed between 1.0 and 3.0 kg. Below 60m groundwater was commonly intersected causing samples to be wet. • 1m sample piles from the cyclone were laid out in orderly rows on the ground. • Using a hand-held trowel, 4m composite samples were collected from the 1m piles. This compositing was aimed to reduce assaying costs. • 4m composite samples weighed between 1.0 and 1.5kg. • 1m split samples mostly weigh between 2-3kg. • Any 4m composite sample that returns an anomalous assay will be re-assayed using the corresponding 1m split samples that will be assayed by Fire Assay for gold and peroxide fusion for REEs. • Quality control of the assaying comprised the insertion of industry (OREAS) standards (certified reference material) every 50th sample. • Samples were sent to the Bureau Veritas Laboratory in Perth. • Samples will be pulverized so that 75% of the sample passes 75µm. • A representative sample of the pulp will then be digested using Aqua Regia (acid) and assayed by ICP-MS for low level gold, Ni, Co and Cr using method AR001 and REEs using method AR102.

For personal use only



Criteria	JORC Code explanation	Commentary
Drilling techniques	<i>Drill type (eg core, reverse circulation, open-hole hammer, rotary air blast, auger, Bangka, sonic, etc) and details (eg core diameter, triple or standard tube, depth of diamond tails, face-sampling bit or other type, whether core is oriented and if so, by what method, etc).</i>	<ul style="list-style-type: none"> • The drilling contractor was Gyro Drilling from Kalgoorlie. Gyro uses 3m drill rods. • Holes were drilled to blade refusal unless excess water was intersected. • Hole diameter was 85mm / 3.5”. • Aircore drilling uses a three-bladed steel or tungsten drill bit to penetrate the weathered layer of loose soil and rock fragments. The drill rods are hollow and feature an inner tube with an outer barrel (like RC drilling). • Aircore drilling uses small compressors (750 cfm/250 psi) to drill holes into the weathered layer of loose soil and fragments of rock. Compressed air is injected into the space between the inner tube and the drill rods inside wall, which flushes the cuttings up and out of the drill hole through the rod’s inner tube, causing less chance of cross-contamination. • Gyro used an Air 750 CFM / 250 PSI Sullair Compressor.
Drill sample recovery	<i>Method of recording and assessing core and chip sample recoveries and results assessed. Measures taken to maximise sample recovery and ensure representative nature of the samples. Whether a relationship exists between sample recovery and grade and whether sample bias may have occurred due to preferential loss/gain of fine/coarse grained material.</i>	<ul style="list-style-type: none"> • Representative aircore samples were collected at 1m intervals, with drill chips from end of hole placed into chip trays and kept for reference at Catalina’s facilities. • Most samples above 60m were dry and sample recovery was good. Below 60m some samples were commonly wet. • Catalina does not anticipate any sample bias from loss/gain of material from cyclone.
Logging	<i>Whether core and chip samples have been geologically and geotechnically logged to a level of detail to support appropriate Mineral Resource estimation, mining studies and metallurgical studies. Whether logging is qualitative or quantitative in nature. Core (or costean, channel, etc.) photography. The total length and percentage of the relevant intersections logged.</i>	<ul style="list-style-type: none"> • All aircore samples were lithologically logged on paper and later transferred to a digital format using a logging template. • Logging is qualitative in nature. • All geological information noted above has been completed by a competent person as recognized by JORC.
Sub-sampling techniques and sample preparation	<i>If core, whether cut or sawn and whether quarter, half or all core taken. If non-core, whether riffled, tube sampled, rotary split, etc., and whether sampled wet or dry. For all sample types, the nature, quality and appropriateness of the sample preparation technique. Quality control procedures adopted for</i>	<ul style="list-style-type: none"> • Aircore sampling was undertaken on 1m intervals using splitter. • Most 1m samples above 60m depth were dry and weighed between 2-3kg. • Samples from the cyclone were laid out in orderly rows on the ground. • Using a hand-held trowel, 4m composite samples were collected from the one-metre piles.

For personal use only



Criteria	JORC Code explanation	Commentary
	<p><i>all sub-sampling stages to maximise representivity of samples.</i></p> <p><i>Measures taken to ensure that the sampling is representative of the in-situ material collected, including for instance results for field duplicate/second-half sampling.</i></p> <p><i>Whether sample sizes are appropriate to the grain size of the material being sampled.</i></p>	<ul style="list-style-type: none"> • These composite samples weighed between 1kg and 1.5kg. • For any anomalous 4m composite sample assays, the corresponding 1m sample splits will be collected and assayed. • Quality control of the assaying comprised the insertion of industry (OREAS) standards (certified reference material) every 50th sample. • Samples were sent to Bureau Veritas Laboratory in Perth. • Samples will be pulverized so that 95% of the sample passes 75µm. • A representative sample of the pulp will then be digested with Aqua Regia and assayed by ICP-MS.
Quality of assay data and laboratory tests	<p><i>The nature, quality and appropriateness of the assaying and laboratory procedures used and whether the technique is considered partial or total.</i></p> <p><i>For geophysical tools, spectrometers, handheld XRF instruments, etc, the parameters used in determining the analysis, including instrument make and model, reading times, calibrations factors applied and their derivation, etc.</i></p> <p><i>Nature of quality control procedures adopted (eg standards, blanks, duplicates, external laboratory checks) and whether acceptable levels of accuracy (ie lack of bias) and precision have been established.</i></p>	<ul style="list-style-type: none"> • All assaying will be completed by Bureau Veritas Laboratory. • 4m composite samples were assayed by Aqua Regia with ICP-MS, method AR001. The detection limit is 1ppb Au. • REE will be assayed by Aqua Regia with ICP-MS, method AR102. • Standards from OREAS were added to the 4m composites every 50th samples. • The methods used are considered appropriate for this style of mineralization expected. • No density data available. • Bureau Veritas routinely re-assay anomalous assays (greater than 0.3 g/t Au) as part of their normal QAQC procedures.
Verification of sampling and assaying	<p><i>The verification of significant intersections by either independent or alternative company personnel.</i></p> <p><i>The use of twinned holes.</i></p> <p><i>Documentation of primary data, data entry procedures, data verification, data storage (physical and electronic) protocols.</i></p> <p><i>Discuss any adjustment to assay data.</i></p>	<ul style="list-style-type: none"> • Verification of significant intersections was undertaken by second geologist. • Validation of 4m composite assay data involves checking of QAQC standard assays. • Comparison of assay results between the composite samples and the 1m samples (Fire Assay) will be made when available. • Data is entered into a logging template on a desk top computer.
Location of data points	<p><i>Accuracy and quality of surveys used to locate drill holes (collar and down-hole surveys), trenches, mine workings and other locations used in Mineral Resource estimation.</i></p> <p><i>Specification of the grid system used.</i></p> <p><i>Quality and adequacy of topographic control.</i></p>	<ul style="list-style-type: none"> • All aircore drill hole coordinates are in GDA94 Zone 51 (Appendix 1). • All aircore holes were located by handheld GPS with an accuracy of +/- 5m. • There is no detailed documentation regarding the accuracy of the topographic control.

For personal use only



Criteria	JORC Code explanation	Commentary
		<ul style="list-style-type: none"> No elevation values (Z) were recorded for collars. There were no downhole surveys completed because aircore drill holes were not drilled deep enough to warrant downhole surveying.
Data spacing and distribution	<p><i>Data spacing for reporting of Exploration Results.</i></p> <p><i>Whether the data spacing and distribution is sufficient to establish the degree of geological and grade continuity appropriate for the Mineral Resource and Ore Reserve estimation procedure(s) and classifications applied.</i></p> <p><i>Whether sample compositing has been applied.</i></p>	<ul style="list-style-type: none"> Aircore holes were spaced at 100m intervals along traverses. Some in-fill holes were drilled at 50m spacing. Given the first pass nature of the exploration programs, the spacing of the exploration drilling is appropriate for understanding the exploration potential and the identification of structural controls of the mineralization. 4m compositing of 1m drill samples has been applied.
Orientation of data in relation to geological structure	<p><i>Whether the orientation of sampling achieves unbiased sampling of possible structures and the extent to which this is known, considering the deposit type.</i></p> <p><i>If the relationship between the drilling orientation and the orientation of key mineralized structures is considered to have introduced a sampling bias, this should be assessed and reported if material.</i></p>	<ul style="list-style-type: none"> The relationship between drill orientation and the mineralized structures is not known at this stage as the prospects are covered by a ~10m blanket of transported cover. It is concluded from field observations that the structures and foliation trends ~160 degrees. Dips are interpreted to be approximately vertical. Azimuths and dips of aircore drilling were aimed to intersect the strike of the rocks at right angles. Downhole widths of mineralization are not known with assays not yet received.
Sample security	<p><i>The measures taken to ensure sample security.</i></p>	<ul style="list-style-type: none"> All samples are packaged and managed by Catalina personnel up to and including the delivery of all samples to the laboratory in Perth.
Audits or reviews	<p><i>The results of any audits or reviews of sampling techniques and data.</i></p>	<ul style="list-style-type: none"> No sampling techniques or data have been independently audited.

For personal use only

Section 2 Reporting of Exploration Results

Criteria	JORC Code explanation	Commentary
Mineral tenement and land tenure status	<p><i>Type, reference name/number, location and ownership including agreements or material issues with third parties such as joint ventures, partnerships, overriding royalties, native title interests, historical sites, wilderness or national park and environmental settings.</i></p> <p><i>The security of the tenure held at the</i></p>	<ul style="list-style-type: none"> The Laverton Project is located within E38/3697. Catalina holds several Exploration Licenses in the Laverton area. None are contiguous with E38/3697. The project area was culturally surveyed and cleared. There are no registered cultural heritage sites within the area.



Criteria	JORC Code explanation	Commentary
	<i>time of reporting along with any known impediments to obtaining a licence to operate in the area.</i>	<ul style="list-style-type: none"> • E38/3697 is held 100% by Catalina Resources. All tenements are secured by the DEMIRS (WA Government). • All tenements are granted, in a state of good standing and have no impediments.
Exploration done by other parties	<i>Acknowledgment and appraisal of exploration by other parties.</i>	<ul style="list-style-type: none"> • The area southeast of Laverton has been explored by multiple companies resulting in the discovery of the Granny Smith Gold Mine and the Mt Weld REE mine. • There have been several phases of Aircore and RC drilling within E38/3697. Between the Lily Pond Well and Pendergast South gold prospects drilling has been conducted by exploration companies including: Anglogold Ashanti, Crescent Gold, Acacia, Metex Resources, Placer Exploration and Sons of Gwalia. • Previous drilling programs have been primarily of a reconnaissance style focused on the Lily Pond Well and Pendergast South Well areas. • Between these gold prospects along the interpreted strike of the Barnicoat Shear the drilling has been sparse. • A small gold resource was discovered at Lily Pond Well and a supergene gold zone was discovered at Pendergast Well.
Geology	<i>Deposit type, geological setting and style of mineralization.</i>	<ul style="list-style-type: none"> • The Laverton Project is located in the Laverton Tectonic Zone, a north-south trending structural domain within the Archean Yilgarn Craton. • The eastern half of the zone comprises predominantly of a sedimentary sequence with subordinate mafic volcanics and intrusives. • The Barnicoat Shear Zone trends in a NNW direction through the tenement linking the Ida H, Lily Pond Well and Pendergast prospect areas. • There is minor deeply weathered exposure in the Lily Pond Well area but the majority of the tenement is covered by ~15m of transported cover that obscures the bedrock geology. • A Proterozoic dyke crosscuts the sequence within the tenement in a NNW direction and is delineated by a prominent magnetic signature. • The sequence is also intruded by the circular Mt Weld Carbonatite just to the south of the tenement that hosts REE mineralization.

For personal use only



Criteria	JORC Code explanation	Commentary
Drill hole Information	<p><i>A summary of all information material to the understanding of the exploration results including a tabulation of the following information for all Material drill holes: easting and northing of the drill hole collar elevation or RL (Reduced Level – elevation above sea level in metres) of the drill hole collar dip and azimuth of the hole down hole length and interception depth hole length.</i></p> <p><i>If the exclusion of this information is justified on the basis that the information is not Material and this exclusion does not detract from the understanding of the report, the Competent Person should clearly explain why this is the case.</i></p>	<ul style="list-style-type: none"> Appendix 1 provides details on the coordinates and specifications of the aircore holes drilled. The documentation for drill hole locations is shown in the appendix of this announcement and is considered acceptable. Consequently, the use of any data obtained is suitable for presentation and analysis. Given the early stages of the exploration programs, the data quality is acceptable for reporting purposes. The exploration assay results for the 4m composites have been received. Assay results for the 1m samples splits are not available. Future drilling programs will be dependent on the assays received.
Data aggregation methods	<p><i>In reporting Exploration Results, weighting averaging techniques, maximum and/or minimum grade truncations (eg cutting of high grades) and cut-off grades are usually Material and should be stated.</i></p> <p><i>Where aggregate intercepts incorporate short lengths of high-grade results and longer lengths of low- grade results, the procedure used for such aggregation should be stated and some typical examples of such aggregations should be shown in detail.</i></p> <p><i>The assumptions used for any reporting of metal equivalent values should be clearly stated.</i></p>	<ul style="list-style-type: none"> NA. The exploration assay results for the 4m composites have been received. Assay results for the 1m samples splits are not available. Mineralized intervals were reported at a cutoff of 100ppb Au (0.1g/t Au). Intersections were calculated using weighted averages. No intervals of below 100ppb Au were used in aggregation of reported intersections.
Relationship between mineralization widths and intercept lengths	<p><i>These relationships are particularly important in the reporting of Exploration Results.</i></p> <p><i>If the geometry of the mineralization with respect to the drill hole angle is known, its nature should be reported.</i></p> <p><i>If it is not known and only the down hole lengths are reported, there should be a clear statement to this effect (eg 'down hole length, true width not known').</i></p>	<ul style="list-style-type: none"> NA The geometry and extent of any mineralization and geology will be provided upon receipt. Mineralization is interpreted to be steeply dipping and drillholes were drilled at 60 degrees to the west.
Diagrams	<p><i>Appropriate maps and sections (with scales) and tabulations of intercepts should be included for any significant discovery being reported These should include, but not be limited to a</i></p>	<ul style="list-style-type: none"> Plans of the drill hole locations and tabulation of the assay results are provided in this announcement.

For personal use only



Criteria	JORC Code explanation	Commentary
	<i>plan view of drill hole collar locations and appropriate sectional views.</i>	
Balanced reporting	<i>Where comprehensive reporting of all Exploration Results is not practicable, representative reporting of both low and high grades and/or widths should be practiced to avoid misleading reporting of Exploration Results.</i>	<ul style="list-style-type: none"> • The exploration assay results for the 4m composites have been received. Assay results for the 1m samples splits are not available. • Exploration results that may create biased reporting have been omitted from these documents. • Appendix 1 details aircore drill hole collar coordinates and specifications. • Appendix 2 tabulates all assays results over 0.1g/t Au and 250ppm TREO.
Other substantive exploration data	<i>Other exploration data, if meaningful and material, should be reported including (but not limited to): geological observations; geophysical survey results; geochemical survey results; bulk samples – size and method of treatment; metallurgical test results; bulk density, groundwater, geotechnical and rock characteristics; potential deleterious or contaminating substances.</i>	<ul style="list-style-type: none"> • No additional exploration data has been reported.
Further work	<i>The nature and scale of planned further work (eg tests for lateral extensions or depth extensions or large-scale step-out drilling). Diagrams clearly highlighting the areas of possible extensions, including the main geological interpretations and future drilling areas, provided this information is not commercially sensitive.</i>	<ul style="list-style-type: none"> • Further drilling in E38/3697 is dependent on the aircore assay results for the 4n composite and 1m split samples. These will be available in Q4 2024. • The 4m composite sample assays have improved delineation of the gold and REE mineralization. Deeper RC drilling will be required to test the mineralization in fresh rock.

For personal use only