

MORE HIGH-GRADE GOLD DISCOVERED IN NEW AREAS AT DYNASTY GOLD PROJECT

5m @ 5.0 g/t Au & 20.6 g/t Ag returned from trenching at new Tomahawk target

Key Highlights

- More high-grade gold discovered at Tomahawk, with an impressive trench result of 5m @ 5.0 g/t Au & 20.6 g/t Ag, including a high-grade zone of 2m @ 11.2 g/t Au and 33.0 g/t Ag. Discovered by reconnaissance soil geochemical sampling earlier this year, Tomahawk is a new exploration target that has never been drill tested.
- The latest result from Tomahawk is in addition to previously announced high-grade trench results from Iguana extensional areas including:
 - 3.0m @ 21.4 g/t Au & 14.1 g/t Ag returned from Iguana south, where a new +400m high-grade gold-silver vein has been discovered. The new vein remains open along strike, is located within a 1km soil geochemical anomaly and has never been drilled.
 - 1.8m @ 4.5 g/t Au & 10.6 g/t Ag returned from Iguana east, with results located at the edge of Inferred Mineral Resources within 1.5km long soil geochemical anomaly, in an area that has never been drilled.
- Iguana trench results were returned from areas outside the Dynasty Mineral Resource, in areas which have never been drilled, representing strong resource growth targets.
- These trench results validate the prospectivity of multiple new targets which exhibit high grade gold in rock chips coincident with soil geochemical anomalies and mapped veins. New significant gold-silver trench results from Tomahawk and Iguana provide “proof of concept” over these new exploration and resource extensional targets.
- A large campaign of surface trenching is being expedited over new exploration and resource extensional targets, with a steady flow of results expected over the coming weeks.
- Dynasty mineralisation footprint confirmed to be much larger than the 5.5km x 1km area which contains the 3.1Moz gold and 22Moz silver Mineral Resource. Reconnaissance work and latest results have confirmed mineralisation footprint to be 9km x 2km, providing significant scope for resource growth from surface.
- Up to 10,000m of drilling is set to test lateral and depth resource extensions along with testing multiple new exploration targets at Dynasty, as the Company works toward a resource update planned for mid-2025.

For personal use only

Titan’s CEO Melanie Leighton commented:

“It’s exciting that our exploration efforts are being rewarded with high-grade gold results from trench in several of our newly identified exploration targets at the Dynasty Gold Project. This latest result of 5m @ 5.0 g/t Au returned from Tomahawk, along with the recent result of 3m @ 21.4 g/t Au at Iguana south has proven the fertility of Dynasty over a 9km x 2km area. We now know that the mineral system encompasses a much larger area than the current 3.1Moz gold & 22Moz silver Mineral Resource.

“The revelation of a much larger mineral system bodes extremely well for us, feeding into our Dynasty resource growth strategy. We are expediting the development of further trenches over priority target areas, with a view to test many of these exploration targets in the upcoming ~ 10,000m drilling campaign.

“We look forward to delivering a steady flow of trench results over new targets in the coming weeks, and more excitingly we also look forward to delivering results from resource and exploration drilling programs over the coming months, as we work towards a Dynasty resource update in mid-2025”

Melanie Leighton
Chief Executive Officer
 E: melanie@titanminerals.com.au
 Ph: +61 8 6555 2950

Jane Morgan
Investor & Media Relations
 E: jm@janemorganmanagement.com.au
 Ph: + 61 405 555 618

For personal use only

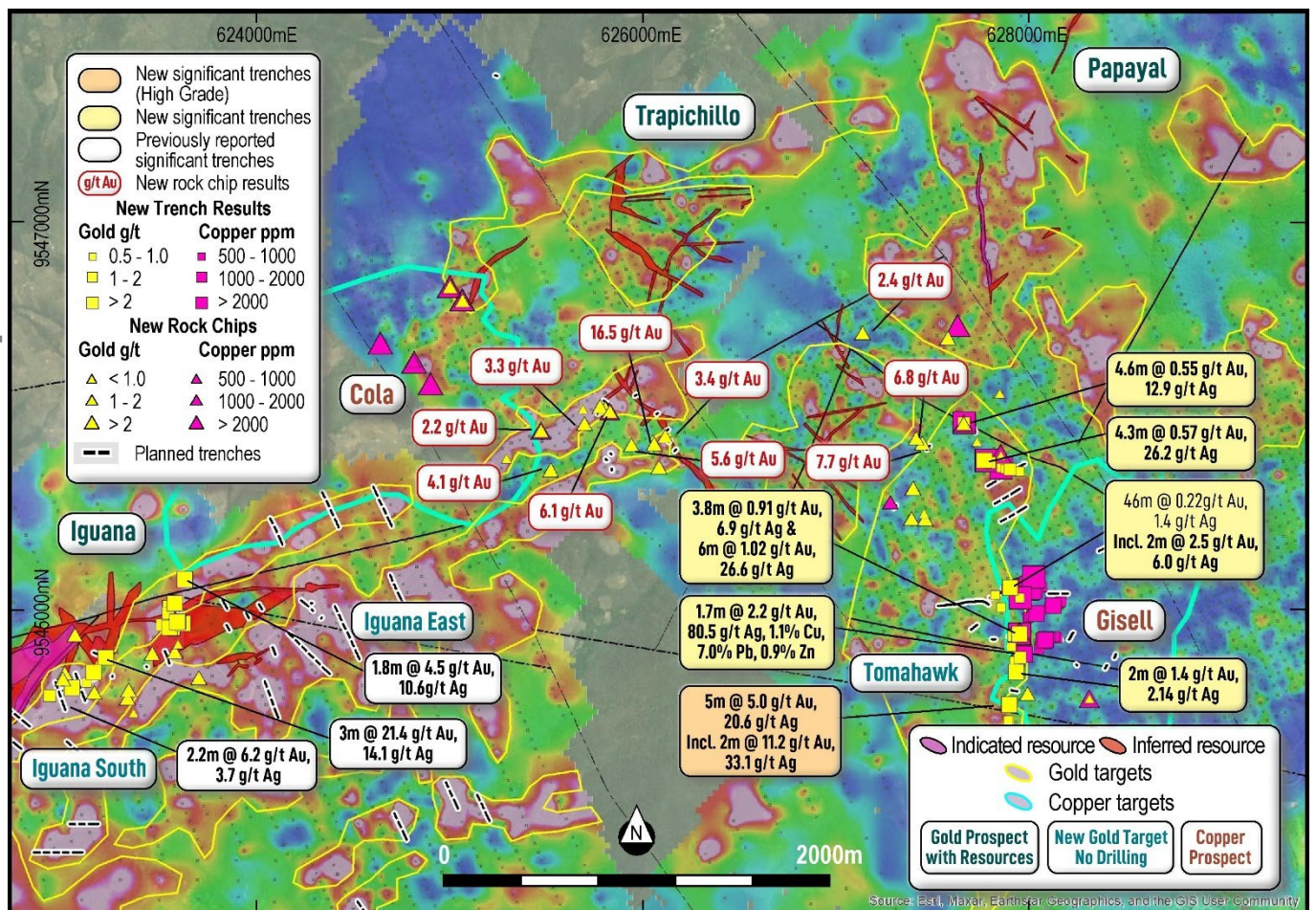


Figure 1. Dynasty Gold Project displaying Mineral Resources, soil geochemistry (arsenic), exploration and resource extensional targets, significant rock chips (Au), significant trench results (Au) and planned trenches over exploration targets.

For personal use only

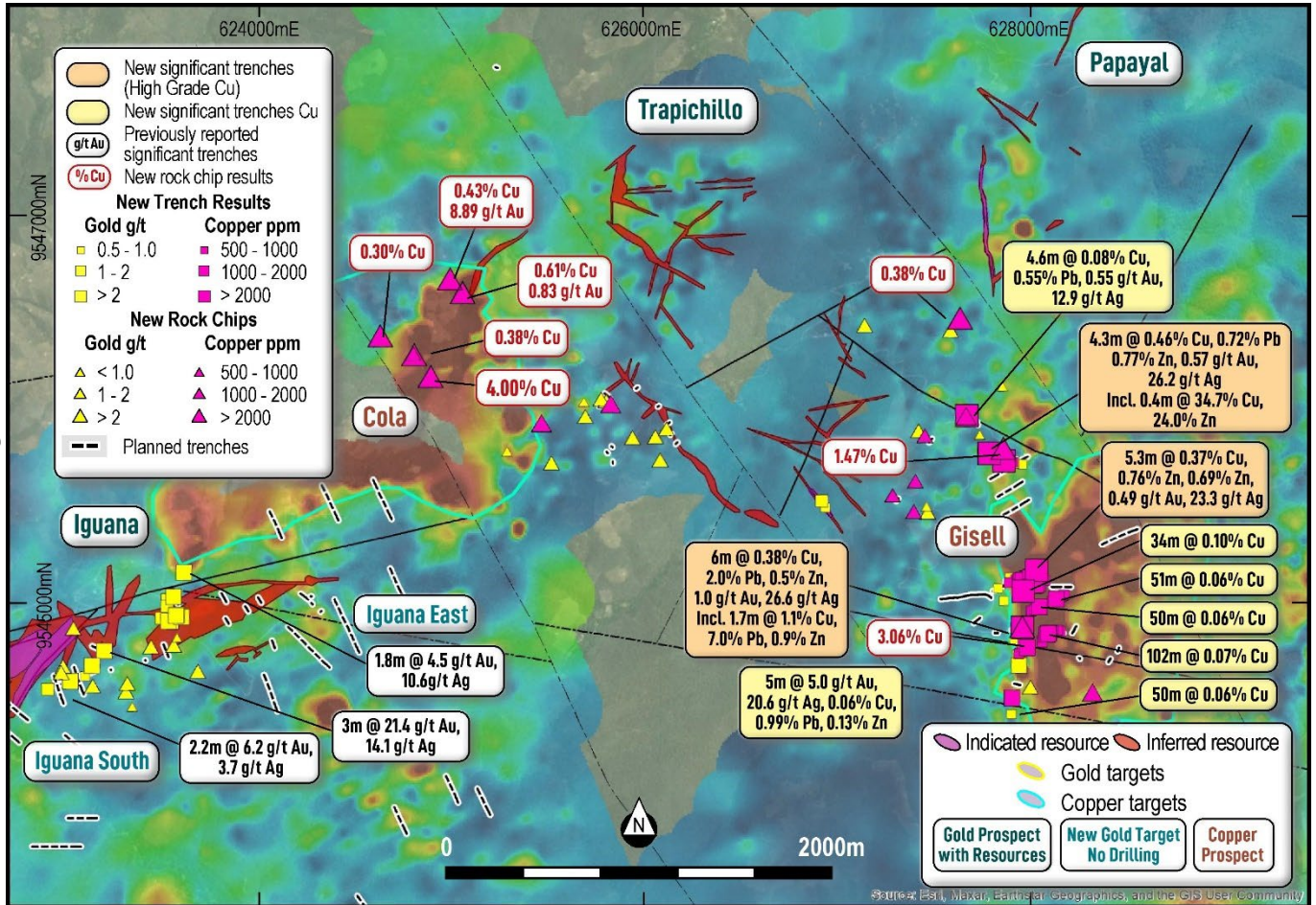


Figure 2. Dynasty Gold Project displaying Mineral Resources, soil geochemistry (copper), copper targets, significant rock chips (Cu), significant trench results (Cu) and planned trenches over exploration targets.

Dynasty Activities Update

Titan Minerals Limited (**Titan** or the **Company**) (**ASX:TTM**) is pleased to provide an update on the Company's 100% held Dynasty Gold Project (**Dynasty**) in southern Ecuador, where it has been conducting extensive exploration in underexplored areas outside the currently defined 3.1 Moz gold and 22 Moz silver Mineral Resource.

Reconnaissance exploration along the Dynasty epithermal system has successfully expanded the gold-silver mineralisation footprint along the entire 9-kilometre corridor, with the mineral system substantially expanded to an area of 9km by 2km, an area much larger than the Mineral Resource area which covers ~ 5.5km x 1km.

Along with the expanded mineralisation footprint, several new exploration and resource extensional gold and copper targets have been highlighted by recent work. Multiple new veins exhibiting high-grade gold have been confirmed from surface by mapping, rock chip sampling and most recently trenching. Importantly, the new veins are in areas never previously explored or drilled and are coincident with large-scale geochemical anomalies.

The Company has been undertaking trenching over new priority targets with the latest results returning significant intersections of high-grade gold-silver and base metals from surface at the new Tomahawk target.

Tomahawk was first identified by reconnaissance soil geochemical sampling completed earlier this year. Highlighted by arsenic, lead, zinc and copper in soil geochemistry, mapping has confirmed Tomahawk to be an ~800m long north-south trending epithermal vein system, located on the western edge of the Gisell porphyry copper target.

New high-grade gold trench results returned from Tomahawk include:

- **5m @ 4.96 g/t Au & 20.6 g/t Ag, 0.99% Pb** in LCC24-010
including a high-grade zone of 2m @ 11.2 g/t Au, 33.1 g/t Ag, 1.65% Pb
- **2m @ 2.51 g/t Au & 6.0 g/t Au** in GST24-010
within a broader intersection of 46m @ 0.22 g/t Au, 1.4 g/t Ag.

Other significant trench results from Tomahawk include:

- 3.8m @ 0.91 g/t Au, 6.9 g/t Ag; and
- 6m @ 1.02 g/t Au, 26.6 g/t Ag, **0.38% Cu, 0.5% Pb, 0.5 % Zn** in LCC24-011
including a high-grade zone of 1.7m @ 2.18 g/t Au, 80.5 g/t Ag, 1.14% Cu, 7.03% Pb, 0.87% Zn
- 4.3m @ 0.57 g/t Au, 26.2 g/t Ag, 0.46% Cu, 0.72% Pb, 0.78% Zn in LCC24-001
including a high- grade zone of 0.4m @ 0.18 g/t Au, 26.8 g/t Ag, 3.47% Cu, 0.3% Pb, 2.4% Zn
- 2.3m @ 0.45 g/t Au, 9.0 g/t Ag, **0.40% Cu, 1.8% Pb, 1.44% Zn** in LCC24-004

These latest trench results add further proof of concept to the multiple targets highlighted by soil geochemical anomalies and at Dynasty, which, if verified by trenching and drilling, have potential to substantially grow the Mineral Resource.

They also complement results recently announced from trenching over Iguana extensional targets, where a new +400m long gold-silver vein has been confirmed from surface to the south of Iguana Mineral Resources, with significant intersections returned from trenching including:

- **3.0m @ 21.4 g/t Au & 14.1 g/t Ag** and
- **2.2m @ 6.2 g/t Au & 3.7 g/t Ag.**

Previously announced trench sampling from Iguana east also highlighted **multiple new veins** with significant results including **1.8m @ 4.5 g/t Au & 10.6 g/t Ag** from surface, confirming vein extensions approximately 150 metres to the north of Inferred Mineral Resources.

Further trenching and channel sampling is currently underway over several new exploration and resource extensional gold and copper porphyry targets, where the Company believes there is good potential to substantially grow Dynasty Mineral Resources. Further results from trenching programs are expected within the coming weeks and will be used to inform drill design over these new target areas.

A campaign of up to 10,000m of exploration and resource drilling is soon to commence at the Dynasty Gold Project. It is anticipated that drilling will provide a steady flow of results over the coming months ahead, with drill results to feed into a Mineral Resource update targeted for mid-2025.

For personal use only

The Company looks forward to providing further updates as exploration and resource development work programs advance at the Dynasty Gold Project.

For personal use only

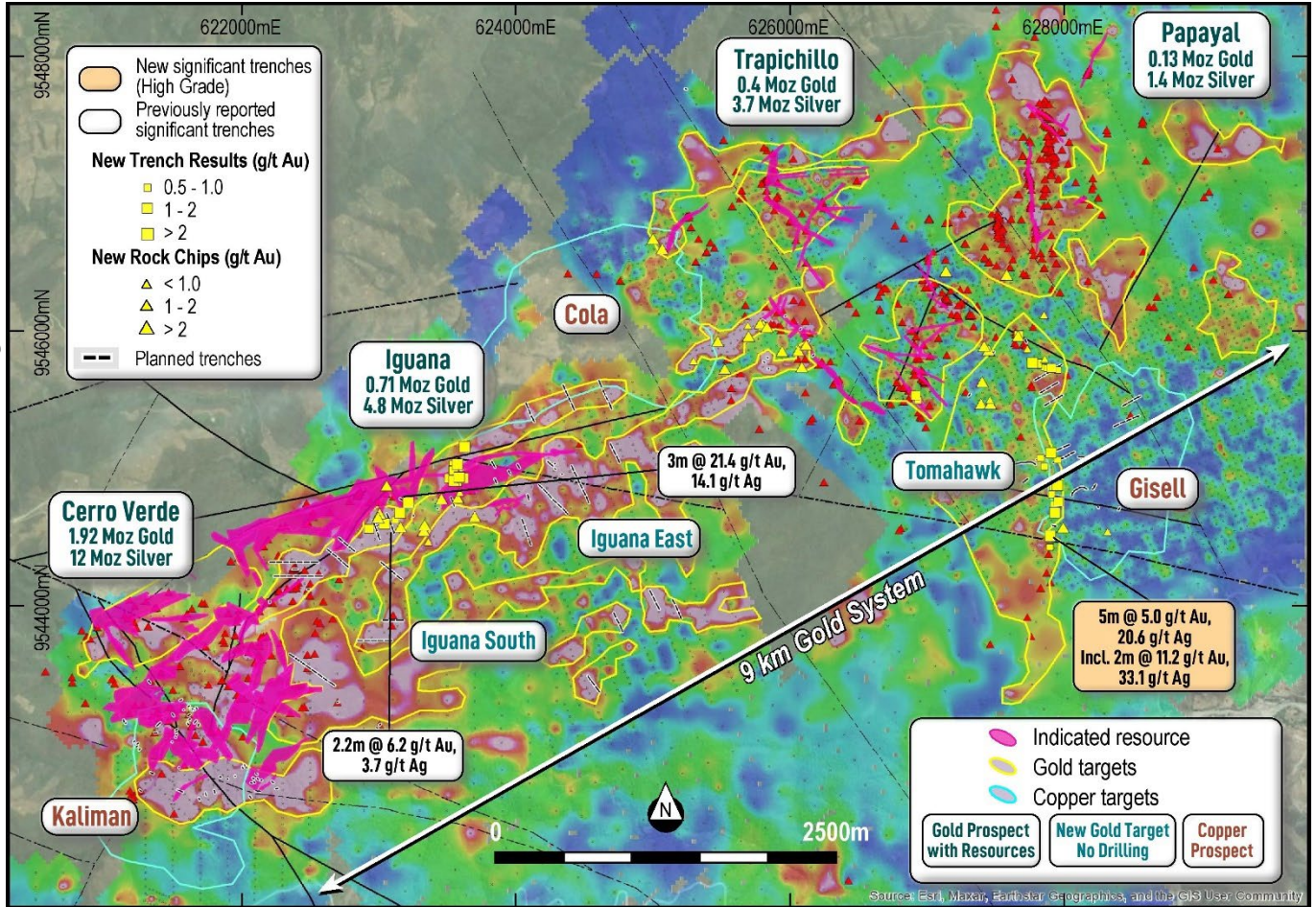


Figure 3. Dynasty Gold Project entire 9km corridor proven to be fertile with epithermal gold and copper porphyry mineralisation. Image shows soil geochemistry (arsenic), gold and copper exploration targets and Mineral Resources, latest significant trench and rock chip results (gold) and previous rock chips (gold).

About the Gisell, Tomahawk & Cumanda Targets

Exploration reconnaissance work programs have been underway across the entire 9-kilometre mineral system at the Dynasty Gold Project since late 2023. In a suppressed market for junior explorers, the Company seized the opportunity to undertake systematic, low-cost generative exploration, exploring new areas- either never previously explored, or with very limited exploration- across the broader Dynasty project, in its strategy to discover shallow resource growth targets.

Soil geochemical data was collected by using the Company’s p-XRF instrument to analyse soil samples. The p-XRF results provided excellent correlation with laboratory assay results for arsenic, lead, zinc, copper, and manganese- pathfinder elements used for gold and copper exploration.

The reconnaissance work successfully identified multiple new gold and copper targets, highlighted by soil geochemical anomalies and subsequently confirmed by mapping and rock chip results. Among these new targets was the Gisell copper porphyry target and the Tomahawk and Cumanda epithermal gold targets.

Soil p-XRF results show Gisell to have an 800 x 700m footprint, highlighted by a copper anomaly. The Gisell target has low epithermal to porphyry metal ratios indicating that mineralisation is associated with a porphyry system.

Geological mapping shows Gisell copper mineralisation to be hosted within a diorite porphyry. Strong pervasive phyllic alteration (quartz-illite-pyrite) is observed, with argillic alteration (illite-kaolinite-carbonate) located on the edges of the phyllic alteration. Stockwork sulphide veins with an average thickness of 2 mm and up to 5 % vein abundance, along with porphyry A-type veins with >1% vein abundance and comb-quartz veins are observed in mapping.

Immediately west of Gisell, coincident arsenic and lead anomalies highlight the Tomahawk and Cumanda targets which exhibit the geochemical signature of epithermal gold veins proximal to a porphyry copper system ie. elevated base metals. Zinc and copper show a +1km north-south trending anomaly, likely related to a large-scale geophysical lineament which has been verified by Titan’s field mapping.

Alteration observed at Tomahawk is predominantly argillic, corresponding to the halo of veins and shear zones. Tomahawk and Cumanda are strongly oxidised, with oxidation mostly corresponding to mapped structures in the veins and trenches. The Cumanda and Tomahawk targets shows good values for gold as seen in rock chips and trenches, with no drilling ever been undertaken across these new targets.

For personal use only

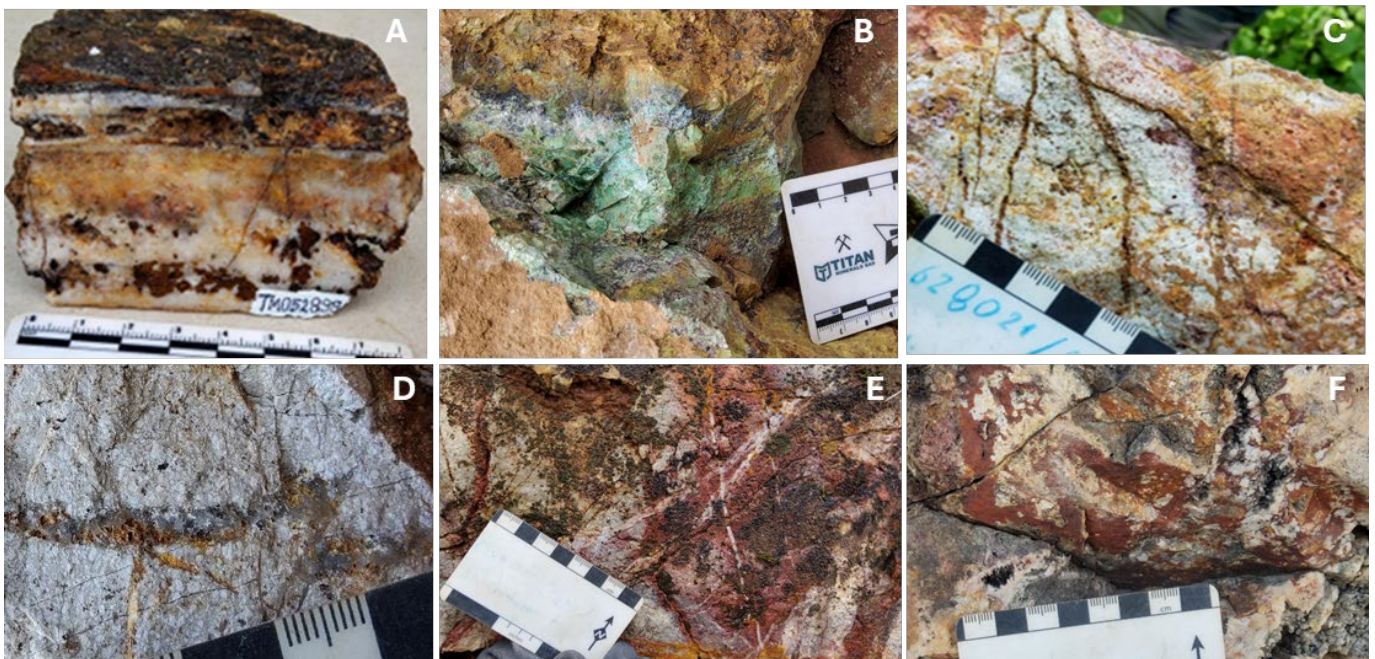


Plate 1: Examples of veining at the Gisell, Tomahawk and Cumanda Targets. Tomahawk- A: Quartz vein. B: Polymetallic Vein. Gisell- C: Sulphide veins (boxworks texture). D: A-type porphyry veins. E: stockwork quartz veins. F: Comb Quartz vein.

ENDS-

Released with the authority of the Board.

Contact details:**Investor Relations: Australia**

Melanie Leighton
Chief Executive Officer
E: melanie@titanminerals.com.au
Ph: +61 8 6555 2950

Jane Morgan
Investor & Media Relations
E: jm@janemorganmanagement.com.au
Ph: + 61 405 555 618

For personal use only

CAPITAL STRUCTURE			
187M SHARES ON ISSUE ASX:TTM	\$1.6M CASH As at 30/06/24	\$3.8M RECEIVABLES As at 31/3/24	470K DAILY LIQUIDITY Average 30-day volume traded
\$88M MARKET CAP At \$0.46/sh	\$3.3M DEBT As at 31/3/2024	14M UNLISTED OPTIONS 27M LISTED OPTIONS	~60% TOP 20 OWNERSHIP

Follow us on:



www.linkedin.com/company/titan-minerals-ltd



www.twitter.com/MineralsTitan



www.titanminerals.com.au

For further information on the company and our projects, please visit www.titanminerals.com.au

About the Dynasty Gold Project

The Dynasty Gold Project is an advanced exploration- early resource stage project comprising five contiguous concessions and is 139km² in area. Three of these concessions received Environmental Authorisation in 2016 and are fully permitted for all exploration and small scale mining activities.

Exploration work at the Dynasty Gold Project has outlined an extensive zone of epithermal veining over a nine kilometres strike and two kilometres in width. There is also considerable potential for porphyry copper mineralisation as identified by surface mapping, trenching, and drilling at the Kaliman prospect and by surface geochemistry and mapping at the Cola and Gisell prospects.

Table 1. Dynasty Mineral Resource Estimate, July 2023

Dynasty Project	Indicated					Inferred					Total				
	Tonnes (M)	Grade (g/t)		Contained Metal (Moz)		Tonnes (M)	Grade (g/t)		Contained Metal (Moz)		Tonnes (M)	Grade (g/t)		Contained Metal (Moz)	
		Au	Ag	Au	Ag		Au	Ag	Au	Ag		Au	Ag	Au	Ag
Cerro Verde	15.17	2.01	13.51	0.98	6.59	13.63	2.15	12.44	0.94	5.45	28.80	2.08	13.00	1.92	12.04
Iguana	2.41	2.36	16.08	0.18	1.25	8.52	1.92	13.00	0.53	3.56	10.93	2.02	13.68	0.71	4.81
Trapichillo	0.05	1.89	9.28	0.00	0.01	2.89	3.83	39.80	0.36	3.70	2.94	3.80	39.31	0.36	3.71
Papayal	0.46	3.04	48.24	0.05	0.72	0.41	6.24	53.80	0.08	0.71	0.87	4.54	50.85	0.13	1.43
Total	18.09	2.09	14.73	1.21	8.57	25.44	2.33	16.40	1.90	13.41	43.54	2.23	15.70	3.12	21.98

Notes: 1. Reported ≥ 0.5 g/t Au. 2. Some rounding errors may be present. 3. Tables are rounded as the final steps. Totals are not calculated after rounding. 4. M – million. Oz- ounce. g/t – grams per tonne.

For personal use only

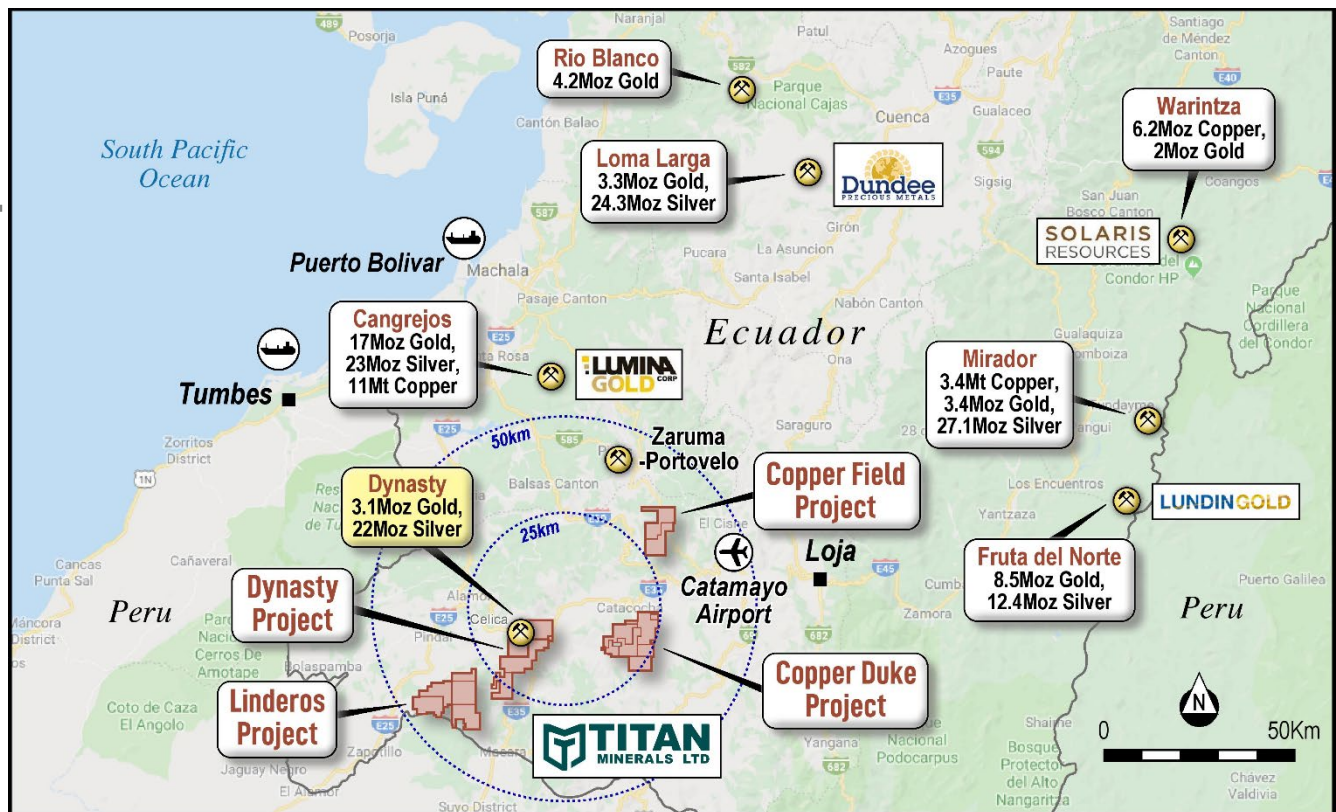


Figure 4. Titan Minerals southern Ecuador Projects, peer deposits and surrounding infrastructure

Competent Person's Statements

The information in this report that relates to Exploration Results is based on and fairly represents information compiled by Ms Melanie Leighton, who is an experienced geologist and a Member of The Australian Institute of Geoscientists. Ms Leighton is a full-time employee at Titan Minerals and has sufficient experience which is relevant to the style of mineralisation and type of deposits under consideration and to the activity which she is undertaking to qualify as a Competent Person as defined in the JORC 2012 Edition of the 'Australasian Code for Reporting of Exploration Results, Mineral Resources, and Ore Reserves'. Ms Leighton consents to their inclusion in the report of the matters based on this information in the form and context in which it appears.

With respect to estimates of Mineral Resources, announced on 6 July 2023, (MRE Announcement) the Company confirms that it is not aware of any new information or data that materially effects the information in the MRE Announcement and that all material assumptions and technical parameters underpinning the estimates continue to apply and have not materially changed.

Forward-looking Statements

This announcement may contain "forward-looking statements" and "forward-looking information", including statements and forecasts. Often, but not always, forward-looking information can be identified by the use of words such as "plans", "expects", "is expected", "is expecting", "budget", "outlook", "scheduled", "estimates", "forecasts", "intends", "anticipates", or "believes", or variations (including negative variations) of such words and phrases, or state that certain actions, events or results "may", "could", "would", "might", or "will" be taken, occur or be achieved. Such information is based on assumptions and judgments of Titan's directors and management regarding future events and results.

The purpose of forward-looking information is to provide the audience with information about Titan's expectations and plans. Readers are cautioned that forward-looking information involves known and unknown risks, uncertainties and other factors which may cause the actual results, performance or achievements of Titan and/or its subsidiaries to be materially different from any future results, performance or achievements expressed or implied by the forward-looking information. Forward-looking information and statements are based on the reasonable assumptions, estimates, analysis and opinions of Titan directors and management made in light of their experience and their perception of trends, current conditions and expected developments, as well as other factors that Titan directors and management believe to be relevant and reasonable in the circumstances at the date such statements are made, but which may prove to be incorrect. Titan believes that the assumptions and expectations reflected in such forward-looking statements and information are reasonable.

Readers are cautioned that the foregoing list is not exhaustive of all factors and assumptions which may have been used. Titan does not undertake to update any forward-looking information or statements, except in accordance with applicable securities law.

For personal use only

Appendix A.

Table 1. Dynasty Significant Trench Results

Trench Number		From	To	Length	Au	Ag	Cu	Pb	Zn
		(m)	(m)	(m)	(g/t)	(g/t)	(%)	(%)	(%)
LCC24-010		1.0	6.0	5.0	4.96	20.61	0.06	0.99	0.13
	<i>including</i>	4.0	6.0	2.0	11.18	33.05	0.09	1.65	0.19
LCC24-001		4.7	6.0	1.3	1.37	32.70	0.03	4.12	0.26
	<i>including</i>	15.2	19.5	4.3	0.57	26.21	0.46	0.72	0.78
LCC24-011		32.0	35.8	3.8	0.91	6.90	0.02	0.08	0.06
	<i>including</i>	58.0	64.0	6.0	1.02	26.59	0.38	2.03	0.51
GST24-010		4.0	50.0	46.0	0.22	1.40	0.03	0.01	0.07
	<i>including</i>	44.0	46.0	2.0	2.51	6.00	0.02	0.03	0.05
LCT24-003		0.7	7.0	6.3	0.59	1.90	0.00	0.04	0.02
	<i>including</i>	1.7	3.7	2.0	1.40	2.14	0.00	0.01	0.01
LCC24-003		0.0	2.0	2.0	0.66	3.68	0.00	0.01	0.05
LCC24-004		1.8	4.0	2.3	0.45	78.95	0.40	1.80	1.44
LCC24-005		2.0	3.4	1.4	0.70	5.83	0.01	0.08	0.04
LCC24-009		1.5	6.1	4.6	0.55	12.87	0.08	0.55	0.07
LCT24-001		26.0	42.0	16.0	0.26	2.19	0.03	0.02	0.05
LCT24-002		27.6	35.3	7.7	0.28	3.00	0.01	0.12	0.02
LCT24-004		4.5	9.6	5.1	0.39	2.80	0.01	0.03	0.16
GSC24-001		0.0	102.0	102.0	0.03	0.38	0.07	0.00	0.07
		125.8	146.0	20.2	0.02	0.22	0.05	0.00	0.09
GSC24-003		0.0	20.0	20.0	0.04	0.68	0.07	0.00	0.07
		26.6	63.0	36.4	0.03	0.31	0.02	0.00	0.17
		64.6	68.5	3.9	0.27	1.44	0.01	0.02	0.03
		68.5	75.5	7.0	0.03	0.82	0.01	0.01	0.19
GST24-001		0.0	50.0	50.0	0.03	0.59	0.06	0.00	0.04
		75.5	76.2	0.7	0.98	1.26	0.00	0.01	0.02
GST24-004		0.0	50.0	50.0	0.06	0.29	0.06	0.00	0.07
GST24-005		0.0	51.0	51.0	0.03	0.50	0.06	0.00	0.07
GST24-006		34.0	51.0	17.0	0.12	1.55	0.08	0.00	0.14
		41.7	45.2	3.5	0.41	4.11	0.04	0.00	0.03
GST24-007		0.0	24.5	24.5	0.03	0.44	0.04	0.00	0.21
GST24-008		4.0	38.0	34.0	0.04	0.42	0.10	0.00	0.08
GST24-011		0.0	36.0	36.0	0.04	0.86	0.05	0.00	0.22
GST24-012		0.0	8.0	8.0	0.02	1.50	0.05	0.00	0.13
GST24-013		0.0	34.0	34.0	0.03	0.93	0.06	0.00	0.11
GST24-014		0.0	8.0	8.0	0.06	0.71	0.05	0.00	0.11

For personal use only

GST24-015		0.0	14.0	14.0	0.02	0.36	0.05	0.00	0.10
GST24-016		36.0	50.0	14.0	0.07	0.65	0.09	0.00	0.10
GST24-018		19.5	21.0	1.5	0.71	3.63	0.02	0.47	0.09
GST24-020		0.0	10.0	10.0	0.16	1.22	0.02	0.04	0.05
GST24-021		0.9	3.4	2.5	0.64	3.60	0.02	0.11	0.13

Table 2. Dynasty Significant Trench Collar Details

Trench Number	East	North	RL	Length	Dip	Azimuth
LCC24-010	627912	9544506	891	7	-3	267
LCC24-001	627772	9545769	1069	22	0	87
LCC24-011	627902	9544859	940	64	-3	69
GST24-010	627875	9545095	923	50	-14	59
LCT24-003	627940	9544675	970	14	-4	104
LCC24-003	627807	9545761	1072	5	13	121
LCC24-004	627863	9545731	1075	7	-7	111
LCC24-005	627883	9545725	1076	5	-5	90
LCC24-009	627677	9545968	1148	7	1	215
LCT24-001	627991	9544771	915	50	37	233
LCT24-002	627956	9544747	941	43	35	237
LCT24-004	627898	9544421	950	13	13	68
GSC24-001	628169	9544843	892	146	7	306
GSC24-003	627987	9544783	911	88	28	298
GST24-001	628000	9544957	889	50	8	69
GST24-004	628132	9545016	882	50	-32	61
GST24-005	628169	9545037	857	14	-26	57
GST24-006	627925	9545039	910	51	-22	62
GST24-007	627966	9545059	894	50	-14	66
GST24-008	628010	9545080	883	50	-15	63
GST24-011	627917	9545115	911	36	-6	62
GST24-012	627948	9545130	907	8	-10	57
GST24-013	627955	9545133	905	34	-11	70
GST24-014	627983	9545145	893	8	-27	65
GST24-015	627990	9545148	890	14	-30	66
GST24-016	628001	9545153	882	50	-35	67
GST24-018	627818	9545063	943	21	-14	66
GST24-020	627873	9545113	910	10	-23	61
GST24-021	627862	9545007	953	9	-12	68

For personal use only

Table 3. Dynasty Significant Rock Chip Results

Sample ID	East	North	Elevation	Au	Ag	Cu	Pb	Zn
				(g/t)	(g/t)	(ppm)	(%)	(%)
TM052646	626064	9545856	1180	16.50	4.9	0.00	0.01	0.00
TM052671	625005	9546672	1330	8.89	9.02	0.43	0.05	0.16
TM052894	627456	9545860	1170	7.74	67.4	0.07	0.25	0.11
TM052893	627423	9545888	1195	6.84	26.5	0.01	0.05	0.11
TM050925	621905	9543410	1325	6.12	91.70	0.01	0.07	0.01
TM052654	625809	9546043	1280	6.09	65.8	0.03	0.93	0.01
TM053430	626816	9544560	1311	5.90	17.55	0.01	0.08	0.03
TM053015	622999	9544640	1045	5.73	75.10	0.01	0.05	0.01
TM052652	625945	9545853	1220	5.60	17.6	0.01	0.02	0.01
TM050927	621971	9543346	1325	4.59	11.05	0.00	0.03	0.01
TM052746	625527	9545722	1190	4.14	10.4	0.01	0.09	0.00
TM052921	627671	9545963	1148	3.58	51.2	0.12	3.86	0.04
TM053431	626802	9544546	1303	3.38	3.78	0.01	0.06	0.02
TM052650	626120	9545897	1140	3.37	29.1	0.02	0.04	0.02
TM052653	625783	9546053	1280	3.32	80.8	0.01	0.24	0.00
TM053001	627401	9545470	1110	2.87	31.6	0.08	0.06	0.03
TM052655	625069	9546601	1260	2.65	33.30	0.20	0.09	0.25
TM06962	628000	9544564	903	2.47	5.9	0.02	0.03	0.01
TM052916	627145	9546433	1110	2.36	7.6	0.00	0.04	0.02
TM052742	625701	9545962	1260	2.33	91.2	0.03	0.62	0.02
TM052644	625835	9546026	1280	2.30	115.0	0.17	1.15	0.06
TM052751	625476	9545927	1125	2.19	63.9	0.11	0.30	0.19
TM052915	627589	9546406	976	2.18	33.9	0.02	0.24	0.02
TM052890	627409	9545628	1116	2.12	237.0	0.05	0.49	0.04
TM052896	627472	9545468	1068	2.12	8.2	0.02	0.53	0.29
TM052648	626088	9545737	1140	2.06	59.5	0.01	0.12	0.03
TM052665	624904	9546168	1140	0.23	23.7	4.00	0.00	0.03
TM052679	627863	9545797	1110	1.36	378.	1.47	2.38	2.72
TM052670	625069	9546602	1260	0.83	69.2	0.61	0.06	1.76
TM07081	626581	9542502	918	0.16	48.1	0.55	0.05	0.18
TM052671	625005	9546672	1330	8.89	9.02	0.43	0.05	0.16
TM052672	624819	9546279	1180	0.05	2.70	0.38	0.02	1.92
TM052913	627638	9546469	950	0.22	35.6	0.38	2.55	6.67
TM052675	624644	9546378	1240	0.00	0.20	0.30	0.00	0.02
TM052655	625069	9546601	1260	2.65	33.3	0.20	0.09	0.25
TM06959	628321	9544537	811	1.52	22.6	0.15	0.05	0.33
TM052751	625476	9545927	1125	2.19	63.9	0.11	0.30	0.19

NB. All locations are given in WGS84 Datum.

For personal use only

APPENDIX B

Dynasty Project - 2012 JORC Table 1

Section 1 Sampling Techniques and Data

For personal use only

Criteria	JORC Code explanation	Commentary
Sampling techniques	<ul style="list-style-type: none"> Nature and quality of sampling (e.g., cut channels, random chips, or specific specialised industry standard measurement tools appropriate to the minerals under investigation, such as down hole gamma sondes, or handheld XRF instruments, etc). These examples should not be taken as limiting the broad meaning of sampling. Include reference to measures taken to ensure sample representivity and the appropriate calibration of any measurement tools or systems used. Aspects of the determination of mineralisation that are Material to the Public Report. <p><i>In cases where 'industry standard' work has been done this would be relatively simple (e.g., 'reverse circulation drilling was used to obtain 1 m samples from which 3 kg was pulverised to produce a 30 g charge for fire assay'). In other cases, more explanation may be required, such as where there is coarse gold that has inherent sampling problems. Unusual commodities or mineralisation types (e.g., submarine nodules) may warrant disclosure of detailed information.</i></p>	<ul style="list-style-type: none"> Trench and Channel sampling is completed as representative cut samples across measured intervals cut with hammer or hammer and chisel techniques. Rock chip samples were selected by geologists as being of geological or mineralisation interest. Rock chips and are not considered to be representative on their own, and are to be used in conjunction with other geological datasets. Samples were dried at a temperature < 60°C, crushed to better than 70% passing a 2mm mesh and split to produce a 250g charge pulverised to 200 mesh to form a pulp sample. 50g charges were split from each pulp for fire assay for Au with an atomic absorption (AA) finish. Samples returning >10ppm Au from the AA finish technique are re-analysed by 50g fire assay for Au with a gravimetric finish. An additional charge is split from sample for four acid digests with ICP-MS reporting a 48-element suite. Within the 48 elements suite, overlimit analyses of a 5-element suite are performed with an ore grade technique (ICP-AES) if any one element for Ag, Pb, Zn, Cu, Mo exceeds detection limits in the ICP-MS method. Soil samples are obtained by excavating soil pits, allowing for the identification of soil profile layers in the area. The average sampling depth is 0.5m, where the B horizon remains intact and there is minimal influence or contamination from organic matter. Once collected, the sample is quartered and passed through a 2mm sieve, the portion passing through the sieve is retained, ensuring a minimum weight of 250g. Soil samples were dried at a temperature < 60°C, sieve sample to 180 microns (80 mesh), and pulverized up to 250g of the sample to achieve 85% passing through 75 microns mesh to form a pulp sample. 50g charges were split from each pulp for super trace gold and multielement in soils analysis.
Drilling techniques	<ul style="list-style-type: none"> Drill type (e.g., core, reverse circulation, open-hole hammer, rotary air blast, auger, Bangka, sonic, etc) and details (e.g., core diameter, triple or standard tube, depth of diamond tails, face-sampling bit, or other type, whether core is oriented and if so, by what method, etc). 	<ul style="list-style-type: none"> No new drilling included in this announcement.
Drill sample recovery	<ul style="list-style-type: none"> Method of recording and assessing core and chip sample recoveries and results assessed. Measures taken to maximise sample recovery and ensure representative nature of the samples. Whether a relationship exists between sample recovery and grade and whether sample bias may have occurred due to preferential loss/gain of fine/coarse material. 	<ul style="list-style-type: none"> No new drilling included in this announcement.

ASX ANNOUNCEMENT

24 October 2024



For personal use only

Criteria	JORC Code explanation	Commentary
Logging	<ul style="list-style-type: none"> Whether core and chip samples have been geologically and geotechnically logged to a level of detail to support appropriate Mineral Resource estimation, mining studies and metallurgical studies. Whether logging is qualitative or quantitative in nature. Core (or costean, channel, etc) photography. The total length and percentage of the relevant intersections logged. 	<ul style="list-style-type: none"> No new drilling included in this announcement. Rock chip and trench samples are geologically logged using qualitative descriptions for lithology, alteration. Mineralogy, veining and presence and type of sulphides.
Sub-sampling techniques and sample preparation	<ul style="list-style-type: none"> If core, whether cut or sawn and whether quarter, half or all cores taken. If non-core, whether riffled, tube sampled, rotary split, etc and whether sampled wet or dry. For all sample types, the nature, quality, and appropriateness of the sample preparation technique. Quality control procedures adopted for all sub-sampling stages to maximise representivity of samples. Measures taken to ensure that the sampling is representative of the in-situ material collected, including for instance results for field duplicate/second-half sampling. Whether sample sizes are appropriate to the grain size of the material being sampled. 	<ul style="list-style-type: none"> Trench and Rock chip samples were submitted in their entirety for analysis, no subsampling was completed. Soil samples are obtained by excavating soil pits, allowing for the identification of soil profile layers in the area. The average sampling depth is 0.5m, where the B horizon remains intact and there is minimal influence or contamination from organic matter. Once collected, the sample is quartered and passed through a 2mm sieve, the portion passing through the sieve is retained, ensuring a minimum weight of 250g. pXRF Analysis: The samples were directed to the internal laboratory situated at the company's offices. Upon entry into the digital sample inventory, they undergo splitting, and a 50g portion is selected for further processing. This 50g portion is then dried in an oven at 60°C for 8 hours to remove moisture. Subsequently, the dried sample undergoes crushing under pressure with a glass roller. The pulverized sample is then pelletized and is prepared for analysis using the handheld p-XRF. Laboratory Assay Analysis: Au was analysed by Aqua regia extraction with ICP-MS finish. An additional charge is split from sample for four acid digests with ICP-MS reporting a 48-element suite. Several duplicate soil samples have been evaluated using laboratory assay and also pXRF analysis with excellent correlation returned for arsenic, copper, lead and zinc. Arsenic is a very good proxy for gold at the Dynasty Gold Project, hence pXRF arsenic data being a valuable tool and vector when exploring for gold mineralisation.
Quality of assay data and laboratory tests	<ul style="list-style-type: none"> The nature, quality and appropriateness of the assaying and laboratory procedures used and whether the technique is considered partial or total. For geophysical tools, spectrometers, handheld XRF instruments, etc, the parameters used in determining the analysis including instrument make and model, reading times, calibrations factors applied and their derivation, etc. Nature of quality control procedures adopted (e.g., standards, blanks, duplicates, external laboratory checks) and whether acceptable levels of accuracy (i.e., lack of bias) and precision have been established. 	<ul style="list-style-type: none"> No geophysical tools used in relation to the reported exploration results. In addition to the laboratory's own quality control ("QC") procedure(s), Titan Minerals Ltd- regularly inserts its own Quality assurance and QC samples, with over 15% of samples in reported results corresponding to an inserted combination of certified reference materials (standards), certified blank material, field duplicate, lab duplicates (on both fine and coarse fraction material). Au was analysed by Aqua regia extraction with ICP-MS finish. An additional charge is split from sample for four acid digests with ICP-MS reporting a 48-element suite. Soil samples analysed by the company pXRF follow a strict sample preparation as outlined in the above section. The pXRF used is a SciAps X505-446 consisting of SC-910-500066 NCMINING - SciAps X-505 Mining Analyzer, SC-114-700019 Rh Soil App-Environmental Rh tube, SC-114-700014 (precious metals app). Forty elements are analysed with the pXRF, with their respective detection limits outlined below:

ASX ANNOUNCEMENT

24 October 2024



For personal use only

Criteria	JORC Code explanation	Commentary																																																																																								
		<table border="1"> <thead> <tr> <th>Element</th> <th>Detection limit</th> <th>Element</th> <th>Detection limit</th> <th>Element</th> <th>Detection limit</th> <th>Element</th> <th>Detection limit</th> </tr> </thead> <tbody> <tr> <td>Ag (ppm)</td> <td>< 5 ppm</td> <td>Cs (ppm)</td> <td>< 10 ppm</td> <td>Nd (ppm)</td> <td>< 50 ppm</td> <td>Si (ppm)</td> <td>< 300 ppm</td> </tr> <tr> <td>Al (ppm)</td> <td>< 300 ppm</td> <td>Cu (ppm)</td> <td>< 5 ppm</td> <td>Ni (ppm)</td> <td>< 5 ppm</td> <td>Sn (ppm)</td> <td>< 5 ppm</td> </tr> <tr> <td>As (ppm)</td> <td>< 5 ppm</td> <td>Fe (ppm)</td> <td>< 25 ppm</td> <td>P (ppm)</td> <td>< 300 ppm</td> <td>Sr (ppm)</td> <td>< 5 ppm</td> </tr> <tr> <td>Ba (ppm)</td> <td>< 10 ppm</td> <td>Hg (ppm)</td> <td>< 5 ppm</td> <td>Pb (ppm)</td> <td>< 5 ppm</td> <td>Te (ppm)</td> <td>< 5 ppm</td> </tr> <tr> <td>Ca (ppm)</td> <td>< 10 ppm</td> <td>K (ppm)</td> <td>< 25 ppm</td> <td>Pr (ppm)</td> <td>< 25 ppm</td> <td>Th (ppm)</td> <td>< 5 ppm</td> </tr> <tr> <td>Cd (ppm)</td> <td>< 5 ppm</td> <td>La (ppm)</td> <td>< 25 ppm</td> <td>Rb (ppm)</td> <td>< 5 ppm</td> <td>Ti (ppm)</td> <td>< 5 ppm</td> </tr> <tr> <td>Ce (ppm)</td> <td>< 25 ppm</td> <td>Mg (ppm)</td> <td>< 2000 ppm</td> <td>S (ppm)</td> <td>< 50 ppm</td> <td>V (ppm)</td> <td>< 5 ppm</td> </tr> <tr> <td>Cl (ppm)</td> <td>< 50 ppm</td> <td>Mn (ppm)</td> <td>< 25 ppm</td> <td>Sb (ppm)</td> <td>< 5 ppm</td> <td>Y (ppm)</td> <td>< 5 ppm</td> </tr> <tr> <td>Co (ppm)</td> <td>< 10 ppm</td> <td>Mo (ppm)</td> <td>< 5 ppm</td> <td>Sc (ppm)</td> <td>< 10 ppm</td> <td>Zn (ppm)</td> <td>< 5 ppm</td> </tr> <tr> <td>Cr (ppm)</td> <td>< 5 ppm</td> <td>Nb (ppm)</td> <td>< 5 ppm</td> <td>Se (ppm)</td> <td>< 5 ppm</td> <td>Zr (ppm)</td> <td>< 5 ppm</td> </tr> </tbody> </table>	Element	Detection limit	Element	Detection limit	Element	Detection limit	Element	Detection limit	Ag (ppm)	< 5 ppm	Cs (ppm)	< 10 ppm	Nd (ppm)	< 50 ppm	Si (ppm)	< 300 ppm	Al (ppm)	< 300 ppm	Cu (ppm)	< 5 ppm	Ni (ppm)	< 5 ppm	Sn (ppm)	< 5 ppm	As (ppm)	< 5 ppm	Fe (ppm)	< 25 ppm	P (ppm)	< 300 ppm	Sr (ppm)	< 5 ppm	Ba (ppm)	< 10 ppm	Hg (ppm)	< 5 ppm	Pb (ppm)	< 5 ppm	Te (ppm)	< 5 ppm	Ca (ppm)	< 10 ppm	K (ppm)	< 25 ppm	Pr (ppm)	< 25 ppm	Th (ppm)	< 5 ppm	Cd (ppm)	< 5 ppm	La (ppm)	< 25 ppm	Rb (ppm)	< 5 ppm	Ti (ppm)	< 5 ppm	Ce (ppm)	< 25 ppm	Mg (ppm)	< 2000 ppm	S (ppm)	< 50 ppm	V (ppm)	< 5 ppm	Cl (ppm)	< 50 ppm	Mn (ppm)	< 25 ppm	Sb (ppm)	< 5 ppm	Y (ppm)	< 5 ppm	Co (ppm)	< 10 ppm	Mo (ppm)	< 5 ppm	Sc (ppm)	< 10 ppm	Zn (ppm)	< 5 ppm	Cr (ppm)	< 5 ppm	Nb (ppm)	< 5 ppm	Se (ppm)	< 5 ppm	Zr (ppm)	< 5 ppm
Element	Detection limit	Element	Detection limit	Element	Detection limit	Element	Detection limit																																																																																			
Ag (ppm)	< 5 ppm	Cs (ppm)	< 10 ppm	Nd (ppm)	< 50 ppm	Si (ppm)	< 300 ppm																																																																																			
Al (ppm)	< 300 ppm	Cu (ppm)	< 5 ppm	Ni (ppm)	< 5 ppm	Sn (ppm)	< 5 ppm																																																																																			
As (ppm)	< 5 ppm	Fe (ppm)	< 25 ppm	P (ppm)	< 300 ppm	Sr (ppm)	< 5 ppm																																																																																			
Ba (ppm)	< 10 ppm	Hg (ppm)	< 5 ppm	Pb (ppm)	< 5 ppm	Te (ppm)	< 5 ppm																																																																																			
Ca (ppm)	< 10 ppm	K (ppm)	< 25 ppm	Pr (ppm)	< 25 ppm	Th (ppm)	< 5 ppm																																																																																			
Cd (ppm)	< 5 ppm	La (ppm)	< 25 ppm	Rb (ppm)	< 5 ppm	Ti (ppm)	< 5 ppm																																																																																			
Ce (ppm)	< 25 ppm	Mg (ppm)	< 2000 ppm	S (ppm)	< 50 ppm	V (ppm)	< 5 ppm																																																																																			
Cl (ppm)	< 50 ppm	Mn (ppm)	< 25 ppm	Sb (ppm)	< 5 ppm	Y (ppm)	< 5 ppm																																																																																			
Co (ppm)	< 10 ppm	Mo (ppm)	< 5 ppm	Sc (ppm)	< 10 ppm	Zn (ppm)	< 5 ppm																																																																																			
Cr (ppm)	< 5 ppm	Nb (ppm)	< 5 ppm	Se (ppm)	< 5 ppm	Zr (ppm)	< 5 ppm																																																																																			
Verification of sampling and assaying	<ul style="list-style-type: none"> The verification of significant intersections by either independent or alternative company personnel. The use of twinned holes. Documentation of primary data, data entry procedures, data verification, data storage (physical and electronic) protocols. Discuss any adjustment to assay data. 	<ul style="list-style-type: none"> Reported intersections are calculated by professional geologists in Australia and validated by a senior geologists in Ecuador. Original laboratory data files in CSV and locked PDF formats are stored together with the merged data. All drilling, and surface data are stored in a self-validating MX Deposit geological database. No adjustment to data is made in the reported results All surveyed data is collected and stored in WGS84 datum. 																																																																																								
Location of data points	<ul style="list-style-type: none"> Accuracy and quality of surveys used to locate drill holes (collar and down-hole surveys), trenches, mine workings and other locations used in Mineral Resource estimation. Specification of the grid system used Quality and adequacy of topographic control. 	<ul style="list-style-type: none"> Reported trench and channel samples are located with an RTK GPS survey unit with sub-centimetre reporting for the purpose of improved confidence in resource estimation work. All surveyed data is collected and stored in WGS84 datum. Topographic control is ground survey quality and reconciled against Drone platform survey data with 1m pixel resolution. Assessed to be adequate for the purpose of resource estimation. Soil samples were located using a GPS Grid system used for all undertakings at the Dynasty Project is WGS84 Zone 17 South 																																																																																								
Data spacing and distribution	<ul style="list-style-type: none"> Data spacing for reporting of Exploration Results. Whether the data spacing, and distribution is sufficient to establish the degree of geological and grade continuity appropriate for the Mineral Resource and Ore Reserve estimation procedure(s) and classifications applied. Whether sample compositing has been applied. 	<ul style="list-style-type: none"> Reported channel and trench sampling is collected on 1m to 2m spacing depending on resolution of geological and structural information deemed necessary by the geology team. Data spacing is anticipated to support mineral resource estimation for the indicated and inferred categories, with data spacing and distribution for higher confidence resource estimation categories to be defined with further drilling, modelling and geostatistical analysis work. Data spacing for reported rock chip samples was on an irregular/ ad hoc basis, with samples taken at the geologists' discretion as part of their surface mapping activities Data spacing for reported soil sampling geochemical results was on a 200m x 50m spacing and in some areas down to an infill grid of 50m x 50m spacing. No Sample compositing has been applied in reported exploration results. 																																																																																								
Orientation of data in relation to geological structure	<p>Whether the orientation of sampling achieves unbiased sampling of possible structures and the extent to which this is known, considering the deposit type.</p> <ul style="list-style-type: none"> If the relationship between the drilling orientation and the orientation of key mineralised structures is considered to 	<ul style="list-style-type: none"> The orientation of trenching and channel sampling is perpendicular to mapped orientation of primary vein and porphyry target observed in outcrop where possible. The true thickness of intercepts will be accounted for following structural analysis and 3D modelling of veins. All results in relation to this report are trenched thickness and should not be interpreted as true thickness. 																																																																																								

ASX ANNOUNCEMENT

24 October 2024



Criteria	JORC Code explanation	Commentary
	<i>have introduced a sampling bias, this should be assessed and reported if material.</i>	<ul style="list-style-type: none">Rock chip samples may have been taken along the length of mineralised vein structures, so bias may be introduced. However, rock chip sample results are used for exploration targeting purposes and will not be considered for resource estimation purposes.No bias is considered to have been introduced by the soil sampling orientation, as the soil samples were taken on a systematic grid spacing, considered to be perpendicular to, and appropriate for, the style of mineralisation.
Sample security	<ul style="list-style-type: none"><i>The measures taken to ensure sample security.</i>	<ul style="list-style-type: none">Samples were collected by Titan Minerals geologists and field technicians and held in a secure yard prior to shipment for laboratory analysis. Samples are enclosed in polyweave sacks for delivery to the lab and weighed individually prior to shipment and upon arrival at the lab. Sample shipment is completed through a commercial transport company with closed stowage area for transport.
Audits or reviews	<ul style="list-style-type: none"><i>The results of any audits or reviews of sampling techniques and data.</i>	<ul style="list-style-type: none">No audits or reviews of reported data completed outside of standard checks on inserted QAQC sampling.

For personal use only

ASX ANNOUNCEMENT

24 October 2024



Section 2 - Reporting of Exploration Results

For personal use only

Criteria	JORC Code explanation	Commentary
Mineral tenement and land tenure status	<ul style="list-style-type: none"> Type, reference name/number, location and ownership including agreements or material issues with third parties such as joint ventures, partnerships, overriding royalties, native title interests, historical sites, wilderness or national park and environmental settings. The security of the tenure held at the time of reporting along with any known impediments to obtaining a licence to operate in the area. 	<ul style="list-style-type: none"> Titan Minerals Ltd, through its indirect wholly owned Ecuadorian subsidiaries, holds a portfolio of exploration properties in the Loja Province of Ecuador. Amongst these, Titan holds a 100% interest in the Pilo 9, Zar, Zar 1, Zar 3A and Cecilia 1 concessions forming the Dynasty Project and totalling an area of 13,909 hectares. Mineral concessions in Ecuador are subject to government royalty, the amount of which varies from 3% to 4% depending on scale of operations and for large scale operations (>1,000tpd underground or >3,000tpd open pit) is subject to negotiation of a mineral/mining agreement. Pilo 9, Zar and Zar 1 are subject to a 3% royalty payable to the Ecuador Government as part of the Small Scale Mine Licensing regime currently issued in favour of the Dynasty Goldfield Project but may be subject to change in the event economic studies after exploration indicate a need to apply for a change of regime. Concessions, Zar 3A and Cecilia 1 have not yet completed the environmental permitting process and require the grant of an Environmental Authorisation. Mineral concessions require the holder to (i) pay an annual conservation fee per hectare, (ii) provide an annual environmental update report for the concessions including details of the environmental protection works program to be followed for the following year. These works do not need approval; and (iii) an annual report on the previous year's exploration and production activity. Mineral Concessions are renewable by the Ecuadorian Ministry of Oil, Mining and Energy in accordance with the Mining Law on such terms and conditions as defined in the Mining Law.
Exploration done by other parties	<ul style="list-style-type: none"> Acknowledgment and appraisal of exploration by other parties. 	<p>Dynasty Gold Project Exploration done by other parties set out in further detail in the Titan ASX release dated 19 May 2020, and summarised below:</p> <ul style="list-style-type: none"> 1977, the Spanish-Ecuadorian joint venture company, Enadimsa, claimed 1,350ha in the La Zanja (Cerro Verde) area for exploration - no results included in reporting. During the 1970s the United Nations explored the "Curiplaya" area, 2 km east of the Dynasty Project. Copper and gold were detected in small quantities, data not included in reporting. 1991–92, BHP Exploration Ltd. covered the general area with concessions, but the tenements eventually lapsed after minimal work. 2001 to 2003, a private prospecting company, Ecuasaxon, undertook investigations in the general area and discovered anomalous gold and silver in quartz-sulphide veins in what is now the concession area. 2003 until 2007 Dynasty Mining and Metals (later Core Gold) completed mapping, limited ground geophysical surveys and exploration sampling activity including 201 drill holes totalling 26,733.5m and 2,033 rock channel samples were taken from 1,161 surface trenches at Cerro Verde, Iguana Este, Trapichillo and Papayal in support of a maiden resource estimation. 2008 to 2009, the Ecuadorian Government introduced an exploration moratorium, where on April 18, 2008, Ecuador's Constitutional Assembly passed a Constituent Mandate resolution (the "Mining Mandate"), which provided, among other provisions, for the suspension of mineral exploration activities for 180 days, or until a new Mining Act was approved. The Mining Act was published in late January 2009. The mining regulations to supplement and provide rules which govern the Mining Act were issued in November 2009, after which time the Mining Act and Regulations (collectively, the "Mining Law") were enacted. 2017 to 2020 Core Gold Inc. (formerly Dynasty Mining and Metals) commenced small scale mining on a

ASX ANNOUNCEMENT

24 October 2024



For personal use only

Criteria	JORC Code explanation	Commentary
		small portion of the Dynasty Project. Operations exposed a number of veins of the Canadian NI 43-101 compliant resource estimate, and operations discovered several veins of varying orientations not previously identified in drill and trench exploration activities requiring further exploration activity to quantify.
Geology	<ul style="list-style-type: none"> • <i>Deposit type, geological setting, and style of mineralisation.</i> 	<ul style="list-style-type: none"> • Regionally, the Dynasty gold project lies within the compressional Inter-Andean Graben that is bounded by regional scale faults. The graben is composed of thick Oligocene to Miocene aged volcano- sedimentary sequences that cover the Chaucha, Amotape and Guamote terrains. This structural zone hosts several significant epithermal, porphyry, mesothermal, S-type granitoid, VHMS and ultramafic/ophiolite precious metal and base metal mineral deposits. • At the project scale, the intermediate volcanic hosted mineralised veins mainly occur along a faulted zone near and sub-parallel to the contact with the Cretaceous aged Tangula Batholith that extends north from Peru and is found outcropping in the east and south of the concessions. • Porphyry intrusion style mineralisation hosting gold and copper mineralisation has also been mapped and intersected by drilling by at the Kaliman porphyry within the Dynasty Project area. • Gold occurs in its native form along with sulphides, including pyrite, sphalerite, galena, arsenopyrite, marcasite, chalcopyrite and bornite.
Drill hole Information	<ul style="list-style-type: none"> • <i>A summary of all information material to the understanding of the exploration results including a tabulation of the following information for all Material drill holes:</i> <ul style="list-style-type: none"> ○ <i>easting and northing of the drill hole collar</i> ○ <i>elevation or RL (Reduced Level – elevation above sea level in metres) of the drill hole collar</i> ○ <i>dip and azimuth of the hole</i> ○ <i>down hole length and interception depth</i> ○ <i>hole length.</i> • <i>If the exclusion of this information is justified on the basis that the information is not Material and this exclusion does not detract from the understanding of the report, the Competent Person should clearly explain why this is the case.</i> 	<ul style="list-style-type: none"> • No new drilling included in the body of this report. • Trench information is included for all reported significant trench results.
Data aggregation methods	<ul style="list-style-type: none"> • <i>In reporting Exploration Results, weighting averaging techniques, maximum and/or minimum grade truncations (e.g., cutting of high grades) and cut-off grades are usually Material and should be stated</i> 	<ul style="list-style-type: none"> • No high-grade assay cut was applied to reported gold results. In the case of silver, the initial upper detection limit of the four-acid digest used is 100ppm, and an overlimit analysis method with an upper detection limit of 1,500ppm is used. • Lower cut-off for reported significant intercepts is 0.2g/t Au with up to 4m of internal dilution (results with <0.1g/t Au or un-sampled intervals where null values are taken as a zero-gold grade in calculating

ASX ANNOUNCEMENT

24 October 2024



For personal use only

Criteria	JORC Code explanation	Commentary
	<p><i>Where aggregate intercepts incorporate short lengths of high-grade results and longer lengths of low-grade results, the procedure used for such aggregation should be stated and some typical examples of such aggregations should be shown in detail.</i></p> <ul style="list-style-type: none"> <i>The assumptions used for any reporting of metal equivalent values should be clearly stated.</i> 	<p>significant intercepts) are allowed within a reported intercept.</p> <ul style="list-style-type: none"> No metal equivalent reporting is applicable to this announcement
Relationship between mineralisation widths and intercept lengths	<ul style="list-style-type: none"> <i>These relationships are particularly important in the reporting of Exploration Results.</i> <i>If the geometry of the mineralisation with respect to the drill hole angle is known, its nature should be reported.</i> <i>If it is not known and only the down hole lengths are reported, there should be a clear statement to this effect (e.g., 'down hole length, true width not known').</i> 	<ul style="list-style-type: none"> Reported intersections are measured sample lengths. Reported trench and channel intersections are of unknown true width, further drilling and modelling of results is required to confirm the projected dip(s) of mineralised zones. Reported intercepts are drilled thickness and should not be interpreted as true thickness unless otherwise indicated.
Diagrams	<ul style="list-style-type: none"> <i>Appropriate maps and sections (with scales) and tabulations of intercepts should be included for any significant discovery being reported. These should include, but not be limited to a plan view of drill hole collar locations and appropriate sectional views.</i> 	<ul style="list-style-type: none"> Included in body of report as deemed appropriate by the competent person
Balanced reporting	<ul style="list-style-type: none"> <i>Where comprehensive reporting of all Exploration Results is not practicable, representative reporting of both low and high grades and/or widths should be practiced avoiding misleading reporting of Exploration Results.</i> 	<ul style="list-style-type: none"> All material exploration results for surface geochemistry are included in the appendices of this report, and location of all results are included in figures provided in their entirety. All results above 0.2g/t Au are included when reporting high grade vein hosted gold mineralisation. No upper cut-off has been applied.
Other substantive exploration data	<ul style="list-style-type: none"> <i>Other exploration data, if meaningful and material, should be reported including (but not limited to): geological observations; geophysical survey results; geochemical survey results; bulk samples – size and method of treatment; metallurgical test results; bulk density, groundwater, geotechnical and rock characteristics;</i> 	<ul style="list-style-type: none"> No other available datasets are considered relevant to reported exploration results. Historical exploration results include orientation studies for ground magnetics, IP Geophysics, and soil sampling grids, however each of these surveys are limited in scale relative to the project and are not considered material to assess potential of the larger project area. Bulk density tests have been completed on areas related to the reported exploration results.

ASX ANNOUNCEMENT

24 October 2024



Criteria	JORC Code explanation	Commentary
	<i>potential deleterious or contaminating substances.</i>	
Further work	<ul style="list-style-type: none"><i>The nature and scale of planned further work (e.g., tests for lateral extensions or depth extensions or large-scale step-out drilling).</i><i>Diagrams clearly highlighting the areas of possible extensions, including the main geological interpretations and future drilling areas, provided this information is not commercially sensitive.</i>	<ul style="list-style-type: none">Additional mapping, trenching and drilling is planned to better define structural controls on mineralisation and assess open ended mineralisation on multiple mineralised corridors within the project area. Further mapping and sampling are to be conducted along strike of reported work to refine and prioritise targets for drill testing.Included in body of report as deemed appropriate by the competent person.

For personal use only