

ASX Announcement

8 October 2024

Strong Turnberry Underground Metallurgy Supports Development of Second Underground Mine at Murchison

Turnberry underground recoveries averaged 95.5%, and up to 99.8%, after 24 hours at 106µm grind size. Underground growth drilling commencing on 16 October 2024.

- Average gravity gold recovery of 48%.
- Rapid leach kinetics with extraction largely completed within 8 hours.
- Low cyanide and lime consumption on all tests.
- The test work confirms strong gold recoveries using conventional gravity and carbon-in-leach (CIL) processing as is being recommissioned at the expanded Murchison processing plant.
- The results pave the way for the Turnberry underground to be included in the December 2024 Murchison Definitive Feasibility Study (DFS) update.
- Turnberry underground expansion drilling (~7,500m) commencing on 16 October 2024 targeting extension of high-grade plunging shoots below the oxide open pits.
- Final RC grade control drilling (~15,000m, following the underground expansion drilling) for the shallow oxide open pits will be completed to accelerate production, improve productivity and confirm the mine plan in light of the expanded processing capacity.

Commenting on the metallurgical results and upcoming drilling, Meeka's Managing Director Tim Davidson said: "Having expanded processing capacity, increasing throughput by 30%, we are now confirming new high margin underground production sources to fill that capacity. High gold recoveries, rapid leach kinetics and low reagent consumption support the inclusion of underground mining at Turnberry in the updated DFS due in December 2024.

We are targeting two underground mines coming into production in the medium term, Turnberry and Andy Well, supplying average ~4-5g/t Au ore to the expanded ~650ktpa processing plant. This will deliver material production growth above that presented in the DFS and any increase in underground resources from the upcoming growth drilling will enhance this opportunity."

Meeka Metals Limited ("**Meeka**" or the "**Company**") is pleased to report strong metallurgical test results for Turnberry underground, part of the 100% owned Murchison Gold Project (**Murchison**). The program assessed conventional CIL gold recovery at a range of grind sizes (150µm, 106µm, 75µm). The results confirm that strong gold recoveries are achieved from Turnberry underground mineralisation using conventional gravity and CIL processing as is being recommissioned at the expanded Murchison processing plant.

Key results after 24 hours were:

- Total gold recovery averaged 95.5% at P₈₀ 106µm grind size.
- Total gold recovery averaged 93.7% at P₈₀ 150µm grind size.

- Gravity gold recovery averaged 48% at both P₈₀ 106µm and 150µm grind size.
- Rapid leach kinetics with extraction largely completed within 8 hours.
- Low cyanide and lime consumption confirmed.

The test work used site water from Andy Well, as will be used for CIL processing following recommissioned at the expanded Murchison processing plant. The program was completed by independent metallurgical consultants, ALS Metallurgy.

For personal use only

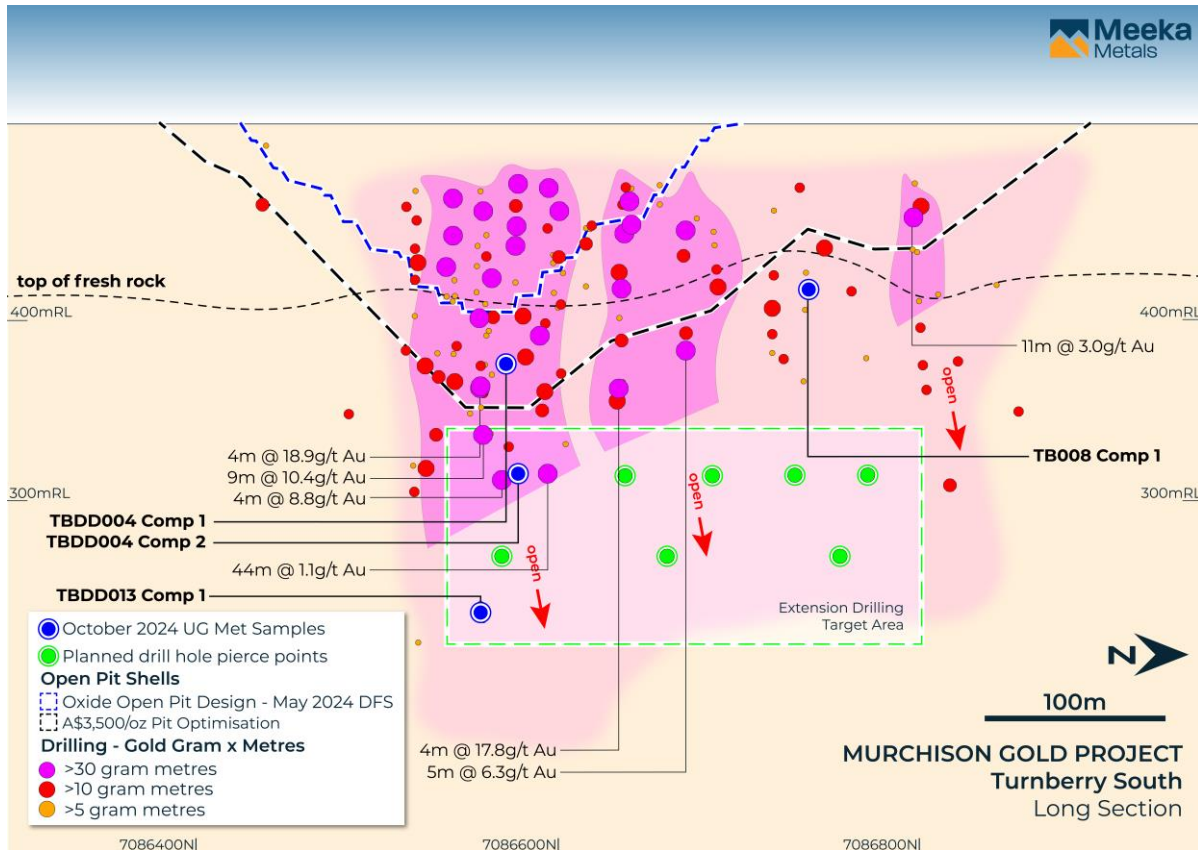


Figure 1: October 2024 Turnberry underground metallurgy composite sample locations (blue dots) and target area for underground Mineral Resource extension drilling (green dots) commencing 16 October 2024.

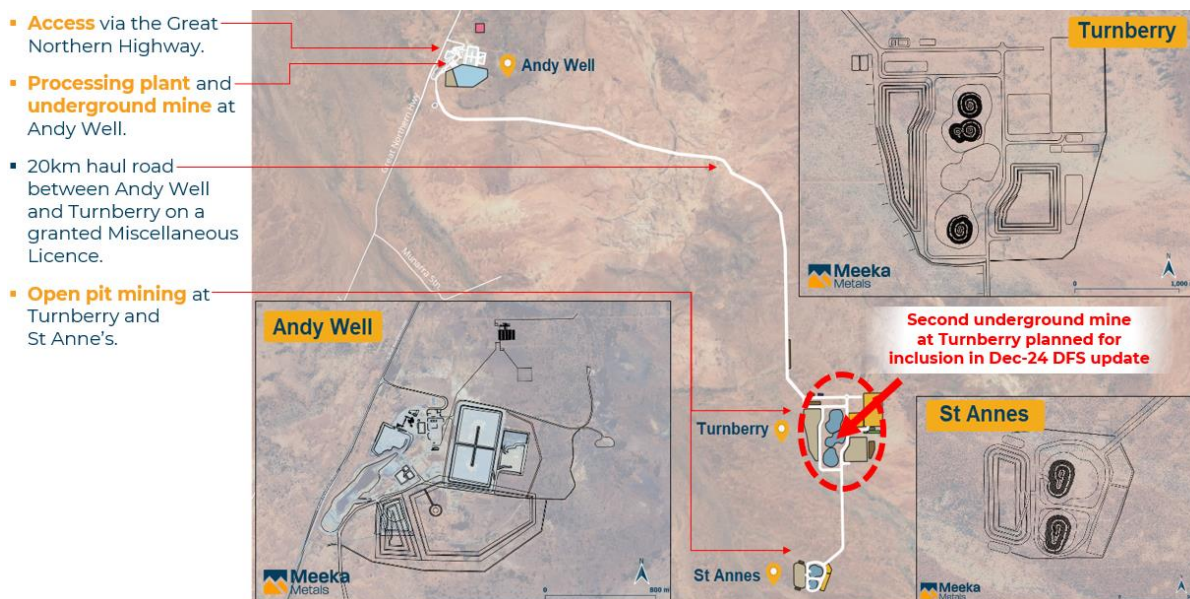


Figure 2: Site layout showing location of planned new underground mine at Turnberry.

Table 1 – Summary of October 2024 Turnberry Underground Metallurgy Results

Sample	Geology	Grind Size P80 µm	Assay Head Grade Au g/t	Calculated Head Grade Au g/t	Gravity Gold Recovery %	Au Extraction (%)					Tail Grade Au g/t	Reagent Consumption	
						2-hr	4-hr	8-hr	24-hr	48-hr		NaCN (kg/t)	Lime (kg/t)
TB008 comp 1	Felsic Volcanics	150	3.70 / 3.48	2.69	24.74	67.5	85.3	95.4	98.8	99.6	0.01	0.14	0.57
TB008 comp 1	Felsic Volcanics	106	3.70 / 3.48	2.82	23.61	67.9	84.5	97.4	99.8	99.8	0.01	0.18	0.55
TB008 comp 1	Felsic Volcanics	75	3.70 / 3.48	2.80	23.76	71.8	86.8	96.9	99.7	99.7	0.01	0.12	0.67
TBDD004 comp 1	Felsic Tuff	150	1.40 / 1.78	1.77	32.46	71.4	78.1	81.8	84.3	85.9	0.25	0.18	0.25
TBDD004 comp 1	Felsic Tuff	106	1.40 / 1.78	1.74	33.15	75.0	81.9	84.3	87.6	88.2	0.21	0.18	0.20
TBDD004 comp 1	Felsic Tuff	75	1.40 / 1.78	1.64	35.03	82.2	88.4	90.9	93.3	93.0	0.12	0.18	0.27
TBDD013 comp 1	Sediments	150	1.54 / 2.30	1.89	54.49	65.2	71.5	81.1	94.5	96.3	0.07	0.29	0.35
TBDD013 comp 1	Sediments	106	1.54 / 2.30	1.82	56.42	68.5	75.4	84.1	96.6	97.3	0.05	0.33	0.37
TBDD013 comp 1	Sediments	75	1.54 / 2.30	1.96	52.56	64.1	70.5	78.0	95.6	98.5	0.03	0.34	0.37
TBDD004 comp 2	Dolerite	150	43.1 / 39.3	35.8	78.22	90.5	94.1	96.5	97.4	97.5	0.89	0.18	0.91
TBDD004 comp 2	Dolerite	106	43.1 / 39.3	35.8	78.38	91.9	95.4	97.4	98.0	98.3	0.63	0.24	0.19
TBDD004 comp 2	Dolerite	75	43.1 / 39.3	35.4	79.18	93.3	96.6	98.4	98.5	98.9	0.39	0.18	0.29

For personal use only

Turnberry Underground Growth Drilling Commencing 16 October 2024

A significant RC drilling program (~7,500m) will commence on 16 October 2024 to extend Mineral Resources contained in high-grade plunging shoots at Turnberry for inclusion in an expanded production plan.

The drilling will target below the shallow oxide open pits where high-grade plunging shoots remain open, including:

- 12m @ 6.7g/t Au – TBRC028
- 21m @ 6.6g/t Au – TBRC236
- 9m @ 10.4g/t Au – TBRC070
- 18m @ 4.1g/t Au – 21TBRC009

Underground Mineral Resource expansion in this area is likely to materially impact production and cash flow at the Murchison.

First assays are expected in November 2024, initially from the underground growth drilling.

For personal use only

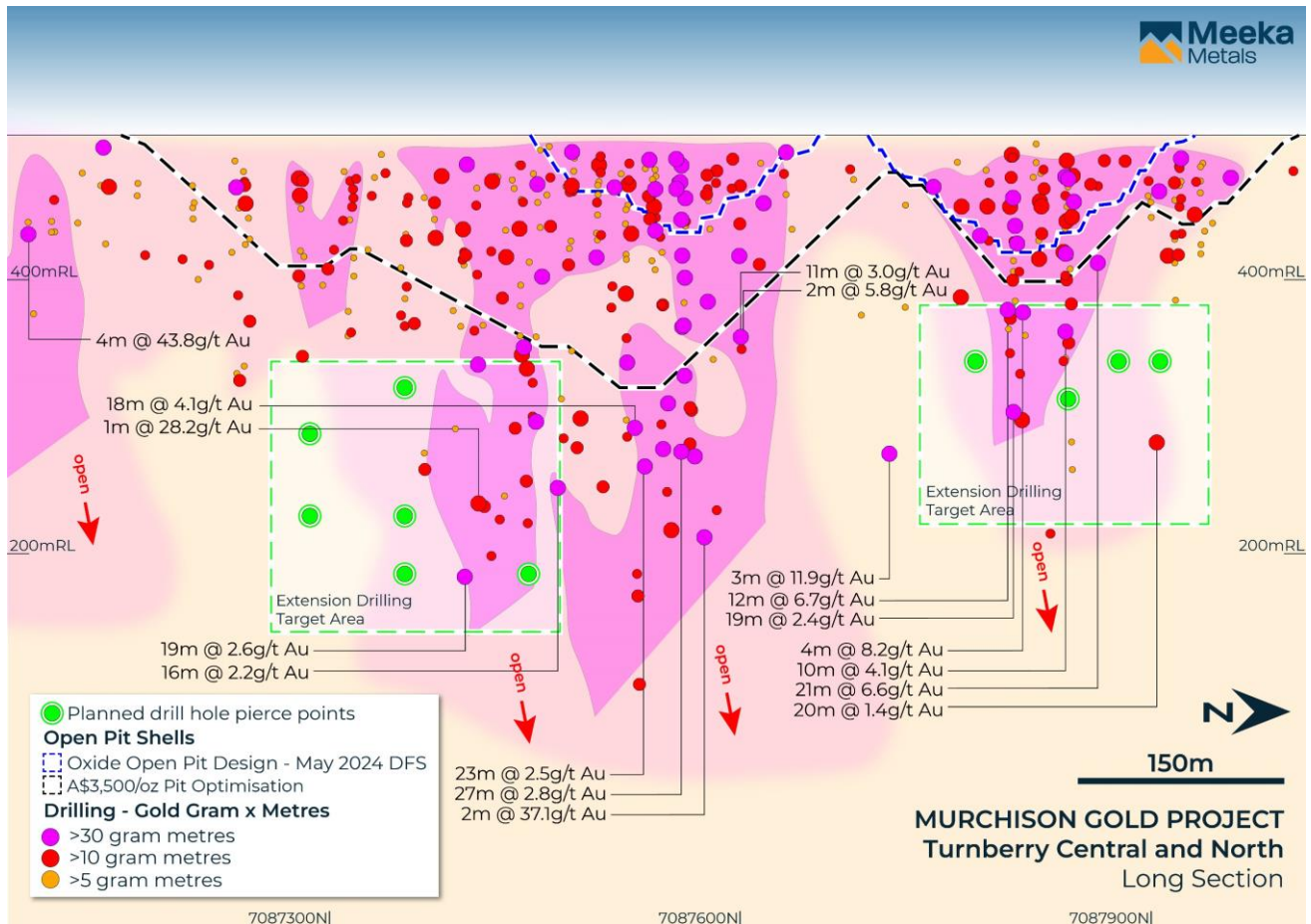


Figure 3: Long section showing Turnberry central and north; shallow oxide open pit design (blue dash), expanded pit optimisation under consideration for December 2024 DFS update (black dash) and target area for underground Mineral Resource extension.

Following the growth drilling, grade control drilling (~15,000m) will be completed for all stage 1 oxide open pits to accelerate production and improve productivity by removing interaction with the open pit mining fleet during production.

Looking Forward Through FY26

		FY25				FY26	
		Q1	Q2	Q3	Q4	Q1	Q2
Studies	DFS Update - expanded processing capacity	■					
Drilling	Turnberry growth drilling targeting UG extensions		■				
	Open pit grade control drilling		■				
	Andy Well growth drilling from UG drill platforms				■	■	■
Infrastructure	Camp / support infrastructure installation	■	■	■			
	Haul road construction		■	■			
Mining	Open pit mining			■	■	■	■
	Re-access and establish services to Andy Well UG		■	■	■		
	Underground mining				■	■	■
Processing	Processing plant refurbishment		■	■	■		
	Processing plant commissioning				■	■	
	Gold production					■	■

Major activities by quarter are summarised in above and detailed below:

- **December 2024:** ongoing construction of 20km haul road between the processing plant and the open pit mining centre.
- **December 2024:** relocation of 750kW ball mill equipment package to the Murchison (early October) and begin process plant upgrade and refurbishment works (late October).
- **December 2024:** drilling of depth extensions below the Turnberry open pits to expand the underground production plan (16 October).
- **December 2024:** grade control drilling of the shallow, high-grade oxide starter pits at Turnberry and St Anne's to accelerate production and improve productivity.
- **December 2024:** commission the camp and administration infrastructure.
- **December 2024:** DFS update with re-optimised production plan for the increased processing capacity.
- **March 2025:** commence open pit mining.
- **March 2025:** re-access and establish services to the high-grade Andy Well underground mine.
- **June 2025:** commence process plant commissioning.
- **June 2025:** drilling of depth extensions at Andy Well from underground drill platforms.

For personal use only

This announcement has been authorised for release by the Company's Board of Directors.

For further information, please contact:

Tim Davidson – Managing Director
+61 8 6388 2700

info@meekametals.com.au
www.meekametals.com.au

ABOUT MEEKA

Meeka Metals Limited has a portfolio of high quality 100% owned projects across Western Australia.

Murchison Gold Project

Meeka's flagship Murchison Gold Project has a combined 281km² landholding that hosts a large high-grade 1.2Moz @ 3g/t Au Mineral Resource on granted Mining Leases.

The Murchison Gold Project Definitive Feasibility Study focusses on restarting the fully permitted Andy Well mill. The Study outlines a straightforward development strategy and strong financial outcomes, including post-tax net cash flows of \$413M, post-tax NPV_{8%} of \$244M and a post-tax IRR of 100% over an initial 9-year production plan.

Circle Valley

In addition, Meeka owns the Circle Valley Project (222km²) in the Albany-Fraser Mobile Belt (also host to the Tropicana gold mine – 3Moz past production). Gold mineralisation has been identified in four separate locations at Circle Valley and presents an exciting growth opportunity for the Company.

For personal use only

COMPETENT PERSON'S STATEMENT

The information that relates to Exploration Results as those terms are defined in the 2012 Edition of the 'Australasian Code for Reporting of Exploration Results, Mineral Resources and Ore Reserves', is based on information reviewed by Mr James Lawrence, a Competent Person who is a member of the Australasian Institute of Mining and Metallurgy. Mr Lawrence is a full-time employee of the Company. Mr Lawrence has sufficient experience that is relevant to the style of mineralisation and type of deposit under consideration and to the activity being undertaken to qualify as a Competent Person as defined in the 2012 Edition of the 'Australasian Code for Reporting of Exploration Results, Mineral Resources and Ore Reserves'. Mr Lawrence consents to the inclusion in the report of the matters based on his information in the form and context in which it appears.

The information that relates to the Mineral Resource for Turnberry was first reported by the Company in its announcement on 6 May 2024. The information that relates to the Mineral Resource for St Anne's was first reported by the Company in its announcement on 17 April 2024. The information that relates to the Mineral Resource for Andy Well was first reported by the Company in its announcement on 21 December 2020. The Company is not aware of any new information or data that materially affects the information included in these announcements and that all material assumptions and technical parameters underpinning the estimates continue to apply and have not materially changed. The Company confirms that the form and context in which the Competent Person's findings are presented have not been materially modified from the original announcement.

The information that relates to Ore Reserves, production targets and forecast financial information for the Murchison Gold Project was first reported by the Company in its announcement on 30 May 2024. The Company is not aware of any new information or data that materially affects the information included in this announcement and that all material assumptions and technical parameters underpinning the estimates continue to apply and have not materially changed. The Company confirms that the form and context in which the Competent Person's findings are presented have not been materially modified from the original announcement.

FORWARD LOOKING STATEMENTS

Certain statements in this report relate to the future, including forward looking statements relating to the Company's financial position, strategy and expected operating results. These forward-looking statements involve known and unknown risks, uncertainties, assumptions and other important factors that could cause the actual results, performance or achievements of the Company to be materially different from future results, performance or achievements expressed or implied by such statements. Actual events or results may differ materially from the events or results expressed or implied in any forward-looking statement and deviations are both normal and to be expected. Other than required by law, neither the Company, their officers nor any other person gives any representation, assurance or guarantee that the occurrence of the events expressed or implied in any forward-looking statements will actually occur. You are cautioned not to place undue reliance on those statements.

JORC 2012 – TABLE 1: TURNBERRY

Section 1 Sampling Techniques and Data

(Criteria in this section apply to all succeeding sections.)

For personal use only

CRITERIA	JORC CODE EXPLANATION	COMMENTARY
<p>Sampling techniques</p>	<p>Nature and quality of sampling (e.g. cut channels, random chips, or specific specialised industry standard measurement tools appropriate to the minerals under investigation, such as down hole gamma sondes, or handheld XRF instruments, etc). These examples should not be taken as limiting the broad meaning of sampling.</p> <p>Include reference to measures taken to ensure sample representivity and the appropriate calibration of any measurement tools or systems used.</p> <p>Aspects of the determination of mineralisation that are Material to the Public Report.</p> <p>In cases where 'industry standard' work has been done this would be relatively simple (e.g. 'reverse circulation drilling was used to obtain 1 m samples from which 3 kg was pulverised to produce a 30 g charge for fire assay'). In other cases more explanation may be required, such as where there is coarse gold that has inherent sampling problems. Unusual commodities or mineralisation types (e.g. submarine nodules) may warrant disclosure of detailed information.</p>	<p>One- metre primary samples and three metre composite samples were collected via reverse circulation and large format aircore (AC) blade drilling.</p> <p>Additional sampling of diamond core was conducted more selectively to understand controls on mineralisation and collect density data.</p> <p>The quality of the samples were actively monitored and evaluated using various quality control techniques.</p> <p>The majority of sampling occurred in the near-completely oxidised regolith clays using large-format AC drilling methods. With appropriate air pressure and volume available and a larger 4-inch hammer air-core is an effective drilling technique in clay formations.</p> <p>When blade refusal is reached, with a larger format AC rig a slimline face sampling RC hammer can be used to sample through consolidated formations. With appropriate air pressure and volume available and monitoring of sample recovery, this method can be considered appropriate.</p> <p>Diamond core drilling has been used to verify key air core drilled intersections.</p> <p>Reverse circulation and diamond core drilling techniques are typical and appropriate for the style of mineralisation being estimated.</p> <p>The quality of the sampling is deemed to be appropriate and fit-for-purpose of mineral resource estimation.</p> <p>Various measures were employed to monitor and assure the quality of samples collected. Such measures include:</p> <p>Every effort is made to drill dry samples. Where wet samples are drilled they are logged as wet and the quality of these samples are taken into account in the resource estimation.</p> <p>Qualitative active monitoring of sample recovery and photographing of drill samples at the end of hole to assess sample recovery.</p> <p>The calibration of scales used for the collection of wet-dry Archimedes density data using a calibration weight during the collection process.</p> <p>Internal calibration checks were performed by the pXRF analyser daily.</p> <p>Calibration of the DGPS instrument was performed before the travelled to site for each surveying campaign.</p> <p>Gold mineralisation was initially determined with ~3kg, speared, four metre composite samples which were dried, crushed and pulverised with a</p>

CRITERIA	JORC CODE EXPLANATION	COMMENTARY
		<p>50g sample fire assayed and analysed using atomic absorption spectrometry.</p> <p>Mineralised composites greater than 0.3 g/t had their respective 1m, ~2-3kg, cone split samples collected and submitted for either fire assay or photon analysis. Fire assay was as described above and photon assay involves drying the sample, fine crushing to 90% passing -3mm and a 500g sub-sample is put in a photon assay jar and analysed for gold.</p> <p>Mineralisation determined qualitatively through monitoring presence of sulphide, quartz veining and visible gold. Additional mineralisation was qualitatively determined using pXRF analysis for pathfinder geochemistry which maps the mineralisation.</p> <p>pXRF analyses for alteration and common rock-forming elements was carried out on every metre by taking a small ~50g sample from the AC/RC fines and analysing with the Olympus Vanta VMR XRF Analyser using all 3 beams for 15 seconds each.</p>
Drilling techniques	<p>Drill type (e.g. core, reverse circulation, open-hole hammer, rotary air blast, auger, Bangka, sonic, etc) and details (e.g. core diameter, triple or standard tube, depth of diamond tails, face-sampling bit or other type, whether core is oriented and if so, by what method, etc).</p>	<p>A combination of AC drilling with 4 inch cutting blade bits and smaller-format 4-inch face sampling hammer bits, RC drilling with 5.5 inch face sampling hammers and triple tube HQ3 and NQ diamond core tails were used to obtain samples.</p> <p>Air drilling was performed with the multi-purpose (AC and RC) Schramm T450 rig with 400psi/1240cfm onboard air for AC drilling and the addition of 350psi/1350cfm compressor and 1000psi booster when drilling deeper or drilling RC. The rig runs 3.5 inch rods and a 3inch diameter sample hose.</p> <p>Diamond core was collected using triple-tube methods in the clays and conventional methods in fresh rock NQ diamond tails. All core was oriented wherever possible using Reflex orientation instruments.</p>
Drill sample recovery	<p>Method of recording and assessing core and chip sample recoveries and results assessed.</p> <p>Measures taken to maximise sample recovery and ensure representative nature of the samples.</p> <p>Whether a relationship exists between sample recovery and grade and whether sample bias may have occurred due to preferential loss/gain of fine/coarse material.</p>	<p>As sample recoveries are generally very high, there is no known relationship between sample recovery and grade.</p> <p>In the Competent Person's opinion, while no quantitative data are available, the qualitative data available and recent drilling conducted by MEK indicate there is no relationship between recovery and grade.</p>
Logging	<p>Whether core and chip samples have been geologically and geotechnically logged to a level of detail to support appropriate Mineral Resource estimation, mining studies and metallurgical studies.</p> <p>Whether logging is qualitative or quantitative in nature. Core (or costean, channel, etc) photography.</p> <p>The total length and percentage of the relevant intersections logged.</p>	<p>Holes logged to a level of detail to support mineral resource estimation, mining studies and metallurgy studies: lithology; alteration; mineralisation; geotechnical; structural.</p> <p>Qualitative: geological data (lithology, alteration, mineralogy, veining etc.)</p> <p>Quantitative: structural orientation angles; geotechnical and geochemical data.</p>

For personal use only

CRITERIA	JORC CODE EXPLANATION	COMMENTARY
		<p>A handheld pXRF instrument was used to collect continuous geochemical data to assist with logging.</p> <p>Core photography or the whole hole wet and photography or sample piles at the completion of each drillhole.</p> <p>All holes logged and chipped for entire length of hole. All chip trays and diamond core archived for future reference.</p>
<p>Sub-sampling techniques and sample preparation</p>	<p>If core, whether cut or sawn and whether quarter, half or all core taken.</p> <p>If non-core, whether riffled, tube sampled, rotary split, etc and whether sampled wet or dry.</p> <p>For all sample types, the nature, quality and appropriateness of the sample preparation technique.</p> <p>Quality control procedures adopted for all sub-sampling stages to maximise representivity of samples.</p> <p>Measures taken to ensure that the sampling is representative of the in situ material collected, including for instance results for field duplicate/second-half sampling.</p> <p>Whether sample sizes are appropriate to the grain size of the material being sampled.</p>	<p>Core diamond tails were half cored with an Almonte core saw.</p> <p>The HQ3 triple tubed holes were whole core sampled apart from the quartz veins which were half core sampled.</p> <p>All 3 m composites were spear sampled.</p> <p>All air drilled 1 m primary samples were split using a gravity fed fixed cone splitter system, predominantly dry. Where samples were split wet these samples were logged as wet samples and the sample system cleaned and dried to minimise bias and contamination.</p> <p>The subsampling technique applied to the RC and AC samples is considered industry standard, with measures in place to maximise recovery and minimise contamination.</p> <p>This includes the application of a cone splitter which allows for a more consistent sample split. In addition, the samples are kept dry using appropriate downhole air pressure within the reverse circulation system. The samples delineation is actively controlled.</p> <p>Diamond core followed half-core sampling techniques. Core was cut along the orientation line and the same half of core was always submitted for analysis.</p> <p>Recovery was logged and accounted for in the logging and sampling.</p> <p>Air drilled (RC and AC) samples were presented to a gravity fed cone splitter to produce a ~3kg sub-sample for each metre. Samples were pulverised to 85% passing 75 microns. The pulp split is scooped from the pulverised pulp sample.</p> <p>For photon analysis the cone split sample is crushed to 90% passing -3mm and a 500g split is taken to fill the photon analysis jar. No duplicates were included in this sample stream.</p> <p>Pulp duplicates taken at the pulverising stage and selective repeats conducted at the laboratory's discretion.</p> <p>No twin drilling has been completed for the project but close spaced diamond drilling of some of the key mineralised areas drilled with AC have been drilled. These holes return similar grade tenor and distributions as the AC holes.</p> <p>Field duplicates are taken from the cone splitter using the second shoot every 20 samples. These are analysed when included in a mineralised interval identified by the composite samples.</p>

For personal use only

CRITERIA	JORC CODE EXPLANATION	COMMENTARY
		<p>No field duplicates are included in the core sample stream. Using two quarter cores as duplicates significantly reduces the sample support of the “duplicates” and sampling of the second half of diamond core leaves no core for future reference.</p> <p>In the Competent Person’s opinion, the sample size is appropriate for the grain size of the material being sampled. The primary sample is as large as possible to use blade drilling for the effective sampling of clay and considering economic constraints. The first split sizes are industry standard and considered appropriate for the mineralisation style. A 50g fire assay is considered the optimal sample size considering practical and economic constraints. The 500g Photon sample is a further improvement in sample support.</p>
<p>Quality of assay data and laboratory tests</p>	<p>The nature, quality and appropriateness of the assaying and laboratory procedures used and whether the technique is considered partial or total.</p> <p>For geophysical tools, spectrometers, handheld XRF instruments, etc, the parameters used in determining the analysis including instrument make and model, reading times, calibrations factors applied and their derivation, etc.</p> <p>Nature of quality control procedures adopted (e.g. standards, blanks, duplicates, external laboratory checks) and whether acceptable levels of accuracy (i.e. lack of bias) and precision have been established.</p>	<p>Fire assay, total technique, with AAS finish is appropriate for gold.</p> <p>Photon assay is considered a total technique and appropriate for gold.</p> <p>In the Competent Person’s opinion, the analysis methods employed are appropriate for the mineralisation style and use in mineral resource estimation.</p> <p>pXRF analysis data were collected for most drilling included in the resource definition programme to support geological modelling. An Olympus Vanta VMR pXRF analyzer with a 50kV x-ray tube and a Rh anode was used for the programme in geochemical mode with all three beams set to 15 seconds. Each day the instrument internally calibrates itself to ensure it is operating within factory specifications. No calibrations have been applied.</p> <p>Certified reference material: 1:25 samples</p> <p>Blanks: coarse blank nominally 1:100; lab - barren quartz flush</p> <p>Field: RC – duplicate taken from second chute on fixed cone splitter at a rate of 1:20.</p> <p>Pulp duplicates selected by the laboratory.</p> <p>In the Competent Person’s opinion, the lab performed acceptably, with acceptable levels of accuracy and precision established. The quality of analysis is appropriate for mineral resource estimation.</p>
<p>Verification of sampling and assaying</p>	<p>The verification of significant intersections by either independent or alternative company personnel.</p> <p>The use of twinned holes.</p> <p>Documentation of primary data, data entry procedures, data verification, data storage (physical and electronic) protocols.</p> <p>Discuss any adjustment to assay data.</p>	<p>All sampling is routinely inspected by senior geological staff.</p> <p>No holes have been twinned at this stage. However key mineralised zones have been core drilled in the centre of a dice-5 pattern to verify high-grade intervals defined from AC.</p> <p>Data stored in Datashed database on internal company server, logging performed on LogChief and synchronised to Datashed database, data validated by database administrator, import validate protocols in place. Visual validation in Leapfrog by Company geologists.</p>

For personal use only

CRITERIA	JORC CODE EXPLANATION	COMMENTARY
		<p>In the Competent Person's opinion, data collection, management and storage is robust and provides a reliable data set to produce a mineral resource estimate.</p> <p>No adjustments made to assay data. First gold assay is utilized for any resource estimation.</p>
Location of data points	<p>Accuracy and quality of surveys used to locate drill holes (collar and down-hole surveys), trenches, mine workings and other locations used in Mineral Resource estimation.</p> <p>Specification of the grid system used.</p> <p>Quality and adequacy of topographic control.</p>	<p>Collars: surveyed with RTK GPS.</p> <p>Downhole: surveyed with in-rod Reflex tool; conventional or north-seeking gyro tool, in-rod or open hole.</p> <p>In the Competent Person's opinion, the accuracy and quality of the drill hole location data is appropriate for use in mineral resource estimation.</p> <p>MGA94 - Zone 50.</p> <p>Topographic data generated using high resolution photogrammetric techniques.</p>
Data spacing and distribution	<p>Data spacing for reporting of Exploration Results.</p> <p>Whether the data spacing and distribution is sufficient to establish the degree of geological and grade continuity appropriate for the Mineral Resource and Ore Reserve estimation procedure(s) and classifications applied.</p> <p>Whether sample compositing has been applied.</p>	<p>Drill hole spacing is nominally 20m x 20m at shallow depths (0-100m) and 50x50m to 50m x 100m at deeper depths (>100m)</p> <p>Data spacing and distribution is sufficient to establish the degree of geological and grade continuity appropriate for the Mineral Resource.</p> <p>Not applicable, as mineralised 4m composites samples (>0.3 g/t) had their respective 1m samples subsequently assayed which take precedence.</p>
Orientation of data in relation to geological structure	<p>Whether the orientation of sampling achieves unbiased sampling of possible structures and the extent to which this is known, considering the deposit type.</p> <p>If the relationship between the drilling orientation and the orientation of key mineralised structures is considered to have introduced a sampling bias, this should be assessed and reported if material.</p>	<p>Drill holes oriented at right angles to strike of deposit, dip optimized for drillability and dip of orebody, sampling believed to be unbiased.</p> <p>There is no apparent bias in any of the drilling orientations used.</p>
Sample security	<p>The measures taken to ensure sample security.</p>	<p>All samples are selected, cut and bagged in a tied, numbered calico bag, grouped into larger polyweave bags. Polyweave bags are placed into larger bulker bags with a sample submission sheet and tied shut. Consignment note and delivery address details are written on the side of the bag and delivered to Toll Express in Meekatharra or collected by Dananni Haulage later in the programme. The bags are delivered directly to ALS in Perth, WA who are NATA accredited for compliance with ISO/IEC17025:2005. ALS reconcile the physical samples delivered against the sample submission and communicate any errors identified.</p>
Audits or reviews	<p>The results of any audits or reviews of sampling techniques and data.</p>	<p>No independent reviews of QAQC have been conducted for the Turnberry drilling.</p>

Section 2 Reporting of Exploration Results

(Criteria listed in the preceding section also apply to this section.)

CRITERIA	JORC CODE EXPLANATION	COMMENTARY
Mineral tenement and land tenure status	<p>Type, reference name/number, location and ownership including agreements or material issues with third parties such as joint ventures, partnerships, overriding royalties, native title interests, historical sites, wilderness or national park and environmental settings.</p> <p>The security of the tenure held at the time of reporting along with any known impediments to obtaining a licence to operate in the area.</p>	<p>Meeka Metals Limited control 100% interest in M51/882 and the tenement is in good standing.</p> <p>M51/882 is located within the Yugunga-Nya Native Title Claim.</p> <p>Heritage surveys have been conducted over active exploration areas.</p> <p>Teck holds an 8.8% net profit interest which is paid only after all expenses incurred by the project (including historical exploration expenses) are recovered by Meeka Metals Limited.</p> <p>Milestone payments of \$5/oz produced are to be paid to Archean Star Resources Australia Pty Ltd, capped at \$1m.</p>
Exploration done by other parties	Acknowledgment and appraisal of exploration by other parties.	Historical exploration was carried out at Turnberry by ASRA, Teck and Newcrest including drilling and geophysics.
Geology	Deposit type, geological setting and style of mineralisation.	Geology consists of Archean aged orogenic style mineralisation. Primary mineralisation is interpreted to be hosted within shear zone(s) +/- stringer quartz veins within both mafic and felsic lithologies. Some supergene mineralisation is developed locally and defined by ferruginous red saprolite clays.
Drill hole Information	<p>A summary of all information material to the understanding of the exploration results including a tabulation of the following information for all Material drill holes:</p> <p>eastings and northing of the drill hole collar</p> <p>elevation or RL (Reduced Level – elevation above sea level in metres) of the drill hole collar</p> <p>dip and azimuth of the hole</p> <p>down hole length and interception depth</p> <p>hole length.</p> <p>If the exclusion of this information is justified on the basis that the information is not Material and this exclusion does not detract from the understanding of the report, the Competent Person should clearly explain why this is the case.</p>	All drill results have been reported to the ASX in line with ASIC requirements, and available from previous announcements at https://meekametals.com.au/asx-announcements/
Data aggregation methods	<p>In reporting Exploration Results, weighting averaging techniques, maximum and/or minimum grade truncations (eg cutting of high grades) and cut-off grades are usually Material and should be stated.</p> <p>Where aggregate intercepts incorporate short lengths of high grade results and longer lengths of low grade results, the procedure used for such aggregation should be stated and some typical examples of such aggregations should be shown in detail.</p>	<p>No top-cuts have been applied when reporting results.</p> <p>All fire and photon assay results associated with the exploration drilling have been reported.</p> <p>Aggregate sample assays are calculated using a length-weighted average.</p> <p>Significant intervals are based on the logged geological interval, with all internal dilution included.</p>

For personal use only

For personal use only

CRITERIA	JORC CODE EXPLANATION	COMMENTARY
	The assumptions used for any reporting of metal equivalent values should be clearly stated.	No metal equivalent values are used for reporting exploration results.
Relationship between mineralisation widths and intercept lengths	<p>These relationships are particularly important in the reporting of Exploration Results.</p> <p>If the geometry of the mineralisation with respect to the drill hole angle is known, its nature should be reported.</p> <p>If it is not known and only the down hole lengths are reported, there should be a clear statement to this effect (eg 'down hole length, true width not known').</p>	<p>Drill holes are oriented at right angles to strike of deposit, dip optimized for drilling purposes and dip of ore body. Down hole widths are reported with most drill holes intersecting the mineralised lenses at 30-40 degrees.</p> <p>Strike of mineralisation is approximately north-south in the Fairway Trend.</p>
Diagrams	Appropriate maps and sections (with scales) and tabulations of intercepts should be included for any significant discovery being reported. These should include, but not be limited to a plan view of drill hole collar locations and appropriate sectional views.	Drilling is presented in long-section and cross section as appropriate and reported quarterly to the ASX in line with ASIC requirements.
Balanced reporting	Where comprehensive reporting of all Exploration Results is not practicable, representative reporting of both low and high grades and/or widths should be practiced to avoid misleading reporting of Exploration Results.	All drillhole results have been reported in previous announcements available at https://meekametals.com.au/asx-announcements/ . Reports also include drillholes of insignificant intersections
Other substantive exploration data	Other exploration data, if meaningful and material, should be reported including (but not limited to): geological observations; geophysical survey results; geochemical survey results; bulk samples – size and method of treatment; metallurgical test results; bulk density, groundwater, geotechnical and rock characteristics; potential deleterious or contaminating substances.	All meaningful and material data are reported.
Further work	<p>The nature and scale of planned further work (eg tests for lateral extensions or depth extensions or large-scale step-out drilling).</p> <p>Diagrams clearly highlighting the areas of possible extensions, including the main geological interpretations and future drilling areas, provided this information is not commercially sensitive.</p>	Follow up work at Fairway trend will comprise of further infill and extensional drilling programs to continue to develop the resource potential and test additional exploration targets.