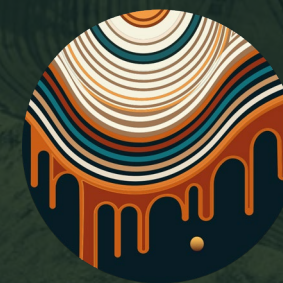


For personal use only



EMU

# INVESTOR PRESENTATION Yataga Copper Project

PRECIOUS AND BASE METALS EXPLORER

# Forward Looking Statements



This presentation has been prepared by EMU NL. This document contains background information about EMU NL current at the date of this presentation. The presentation is in summary form and does not purport be all inclusive or complete. Recipients should conduct their own investigations and perform their own analysis in order to satisfy themselves as to the accuracy and completeness of the information, statements and opinions contained in this presentation.

This presentation is for information purposes only. Neither this presentation nor the information contained in it constitutes an offer, invitation, solicitation or recommendation in relation to the purchase or sale of shares in any jurisdiction.

This presentation may not be distributed in any jurisdiction except in accordance with the legal requirements applicable in such jurisdiction. Recipients should inform themselves of the restrictions that apply in their own jurisdiction. A failure to do so may result in a violation of securities laws in such jurisdiction.

This presentation does not constitute investment advice and has been prepared without taking into account the recipient's investment objectives, financial circumstances or particular needs and the opinions and recommendations in this presentation are not intended to represent recommendations of particular investments to particular persons. Recipients should seek professional advice when deciding if an investment is appropriate. All securities transactions involve risks, which include (among others) the risk of adverse or unanticipated market, financial or political developments.

To the fullest extent permitted by law, EMU NL, its officers, employees, agents and advisers do not make any representation or warranty, express or implied, as to the currency, accuracy, reliability or completeness of any information, statements, opinions, estimates, forecasts or other representations contained in this presentation. No responsibility for any errors or omissions from this presentation arising out of negligence or otherwise is accepted.

This presentation may include forward-looking statements. Forward-looking statements are only predictions and are subject to risks, uncertainties and assumptions which are outside the control of EMU NL. Actual values, results or events may be materially different to those expressed or implied in this presentation. Given these uncertainties, recipients are cautioned not to place reliance on forward looking statements. Any forward-looking statements in this presentation speak only at the date of issue of this presentation. Subject to any continuing obligations under applicable law and the ASX Listing Rules, EMU NL does not undertake any obligation to update or revise any information or any of the forward-looking statements in this presentation or any changes in events, conditions or circumstances on which any such forward looking statement is based.

For personal use only

# Competent Person's Report



## Competent Person Disclosure

The information in this disclosure relates to the exploration activities undertaken by EMU NL conducted over its exploration tenements in Australia. All information in this presentation has previously been recorded in the public domain.

EMU NL is not aware of any new information or data that materially affects the information included in the original market announcements.

The information in this presentation is based on, and fairly represents information and supporting documentation compiled by Mr Nigel Maund, a Competent Person who is consulting economic geologist to EMU NL. Mr Maund is a Fellow of the Australian Institute of Geoscientists, a Fellow of the Australian Institute of Mining and Metallurgy and has sufficient experience in the activities in which he undertakes to qualify as a Competent Person as defined in the 2012 edition of the "Australasian Code for Reporting of Exploration Results, Mineral Resources and Ore Reserves". Mr Maund consents to the inclusion herein of the matters based upon his information in the form and context in which it appears, and the Company confirms the form and context in which the Competent Persons findings are presented, have not been materially modified from the relevant original market announcements.

## Authorisation

This presentation has been authorized for release by Chief Executive Officer



# Georgetown, Qld



EMU

- 1,000 mines, prospects, mineral occurrences in Georgetown District
- 3 exploration permits covering 850km<sup>2</sup>
- Significant historical gold production, very little systematic modern exploration
- Gold, lithium, silver, lead, zinc, copper, tin, tantalum, niobium, uranium, fluorine and molybdenite
- 8 potential scale prospects gold, copper, silver lead identified to date including the Yataga Copper Project
- EMU is targeting 100's of millions of tonnes of bulk mineable copper and other metals



For personal use only

# Yataga Copper Project



EMU

## Yataga Igneous Complex

- Intrusive granitoid ~70km<sup>2</sup> located largely within tenement EPM 27667

## Yataga Copper Project

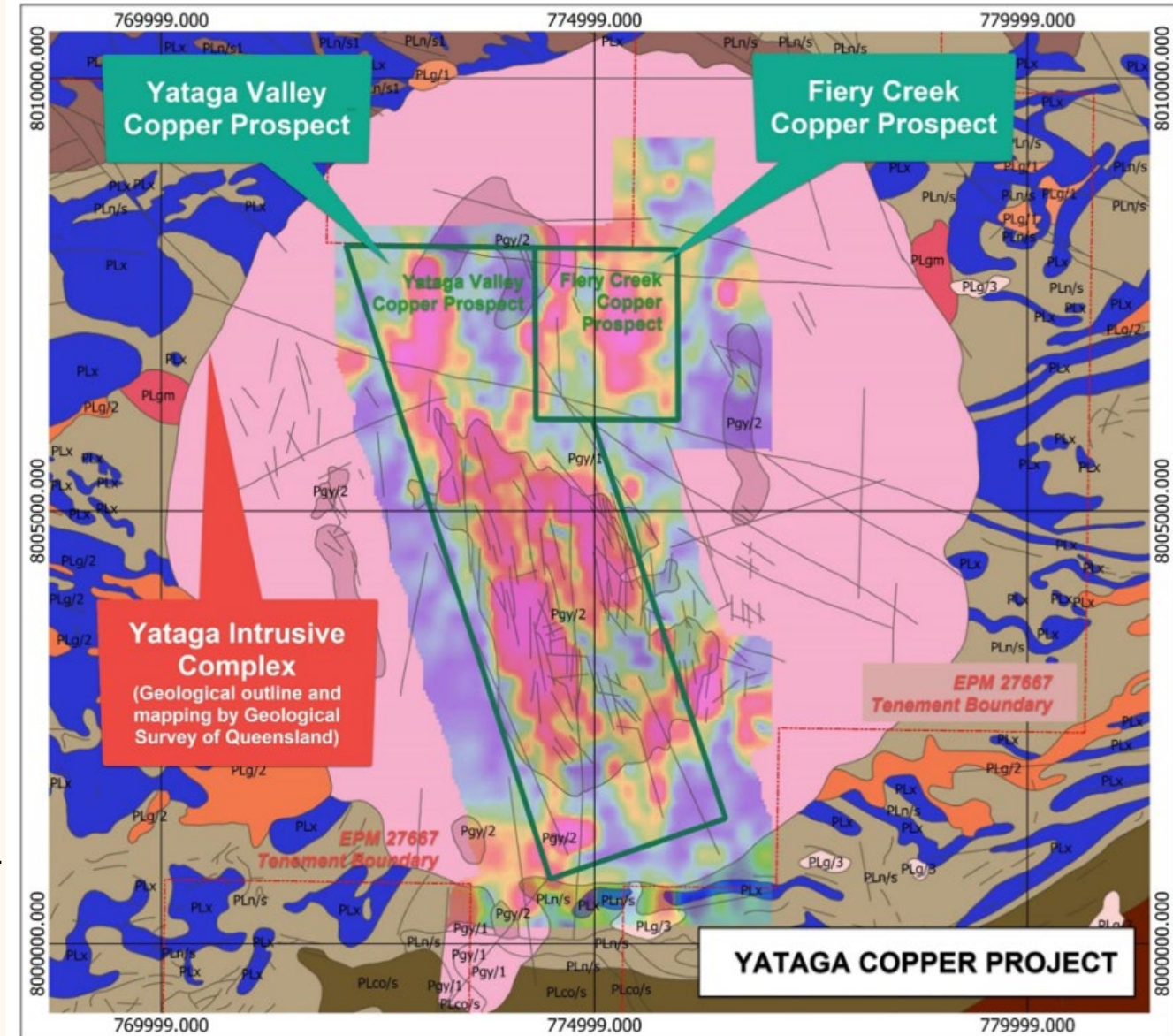
- Yataga Igneous Complex that falls with the EPM 27667

## Fiery Creek Copper Prospect

- EMU's original prospect discovery in northern area of the Yataga Copper Project

## Yataga Valley Prospect

- Recent discovery of widespread surficial copper mineralisation along the NNW-SSE shear zone in the central part of the Yataga Copper Project





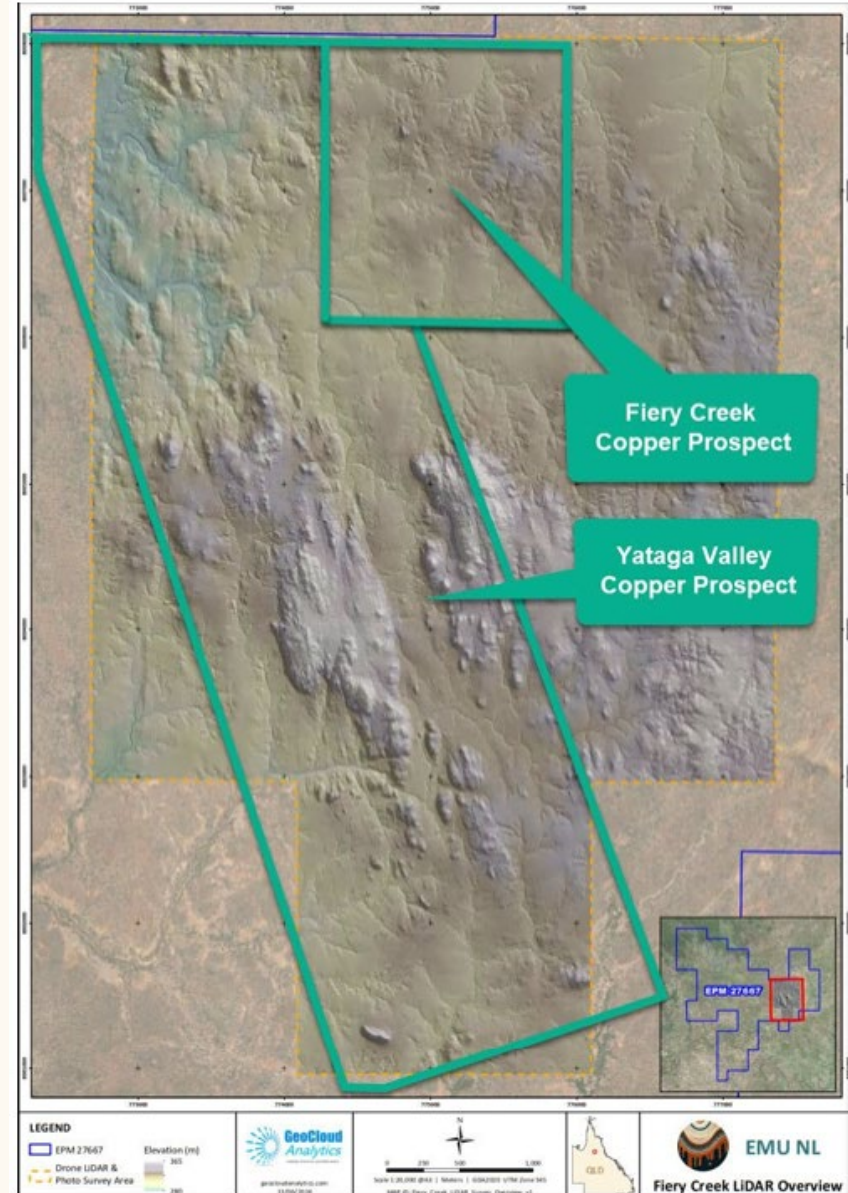
# Yataga Valley Copper Prospect



EMU

## A NEW PROSPECT

- Recent work has identified a combined area\* of 8km<sup>2</sup> of copper-in-soil anomalism with significant potential for expansion
- Includes the Fiery Creek and Yataga Valley Prospect areas
- Modelling of the surface mineralisation indicates presence of multiple Cu-bearing intrusive centres at or close to surface
- Analogous to geological setting of the Highland Valley Copper Mine (British Columbia) – largest open pit mine in Canada
- “Plutonic copper porphyry” mineralisation provides encouragement of potential scale of Yataga Copper Project



\* Including Fiery Creek

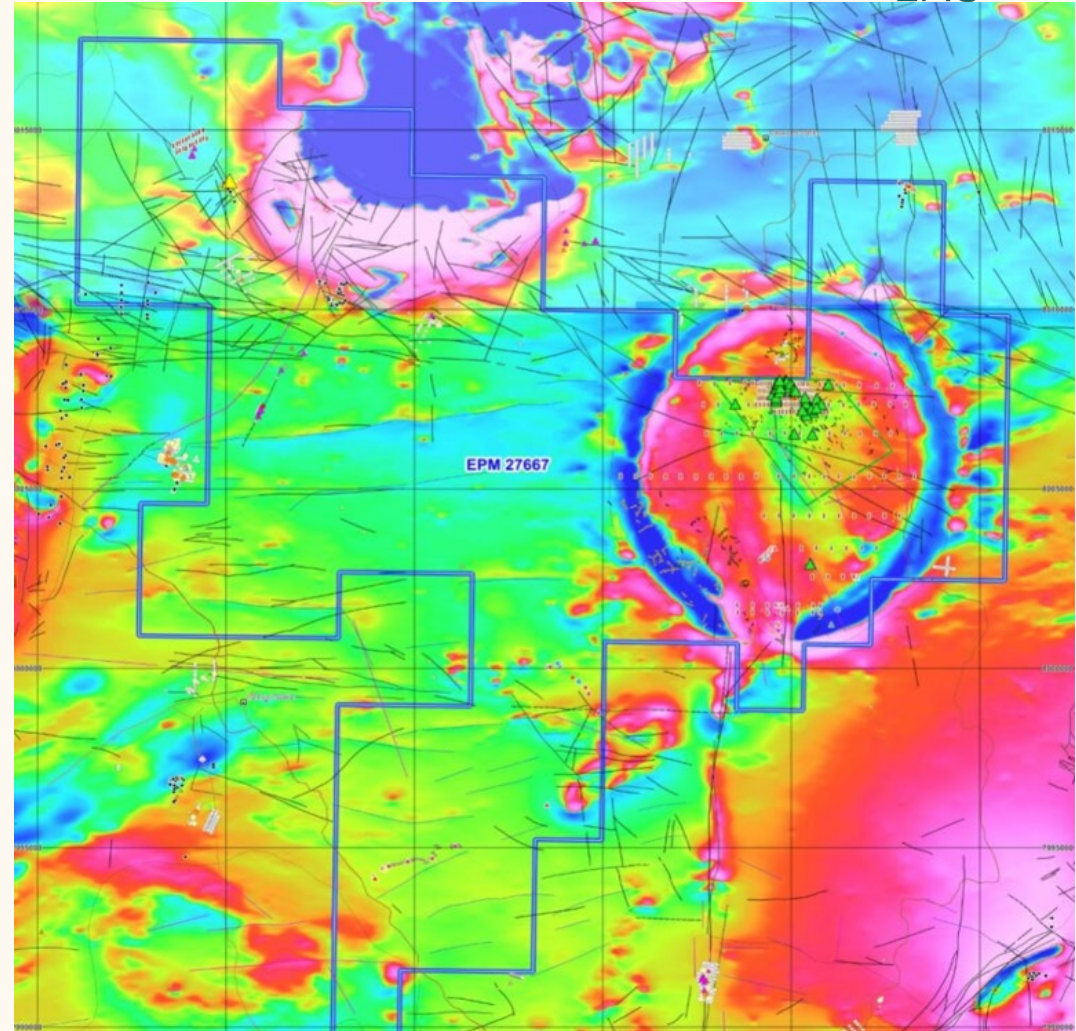
# Fiery Creek Copper Prospect



EMU

## EMU'S ORIGINAL DISCOVERY PROSPECT

- 32.5% copper, 14 ounces silver (460 g/t)\* from rock samples in quartz breccia hosted veins at Fiery Creek
- 1600m x 750m outcropping copper veining up to 2m wide
- Prospect is interpreted to be located, within the roof of the porphyry intrusive system
- Outcropping veining and stockwork with extensive disseminated secondary copper mineralisation at surface
- Multi element assays point to possibility of a significant copper polymetallic system
- Pathfinder element anomalism widespread
- A number of geochemistry surveys completed by EMU



\*ASX Release "Copper Silver Lead Assay Results Pegmatite Fields Georgetown" 5 October 2023



# Work Program

## 2024 FIELD WORK TO DATE

Systematic, comprehensive, methodical and measured exploration program

Dr Gregg Morrison and Nigel Maund- key technical advisors appointed

Geophysical and geochemical surveys completed

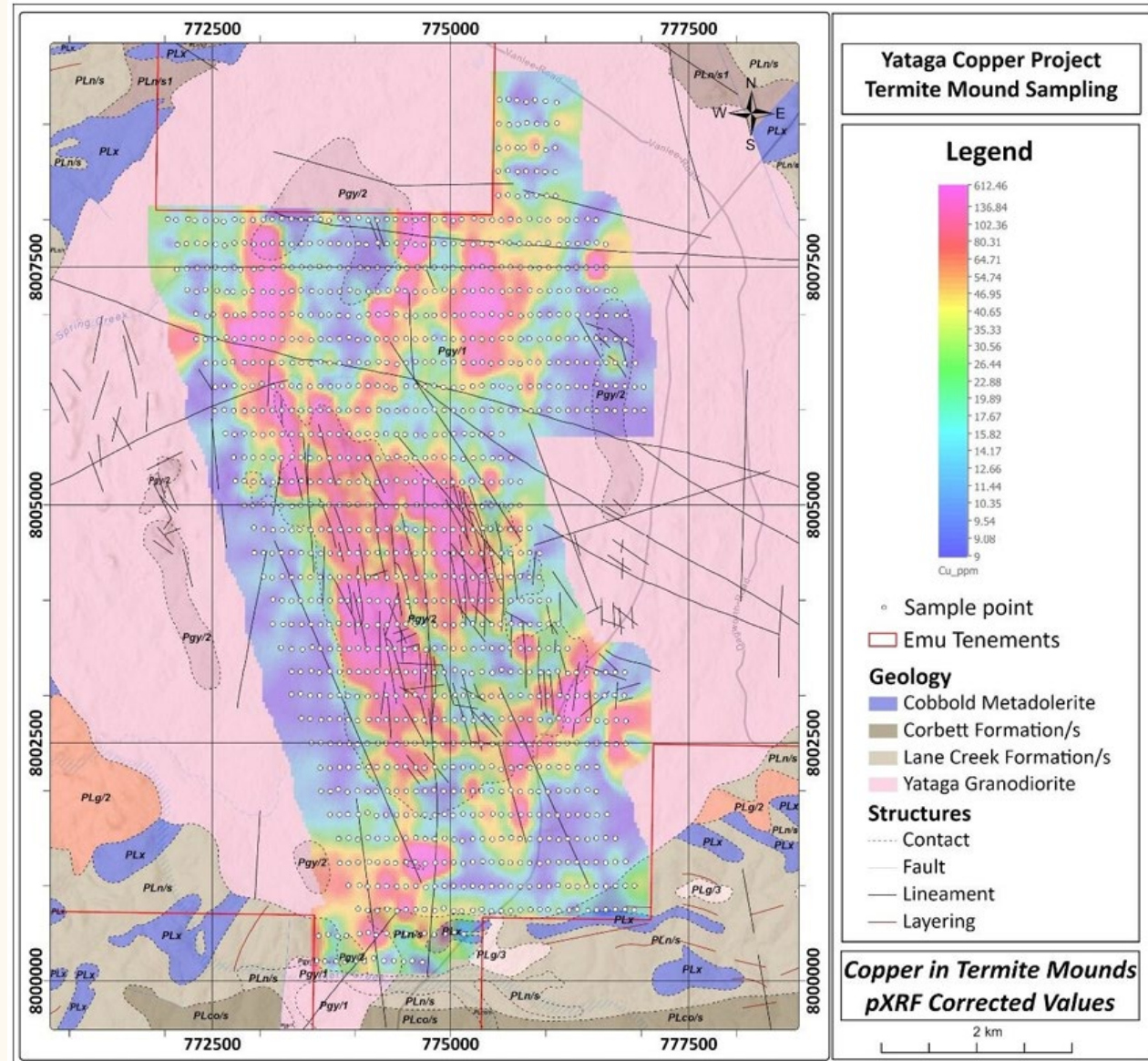
Multiple pXRF geochemistry surveys to define anomalism and delineate the likely mineralisation fluid-flow geometry

Geophysical and geochemical surveys underway to broaden and extend the copper mineralisation footprint

- Aboriginal Heritage Survey completed
- Modelling to optimise drill target selection



EMU



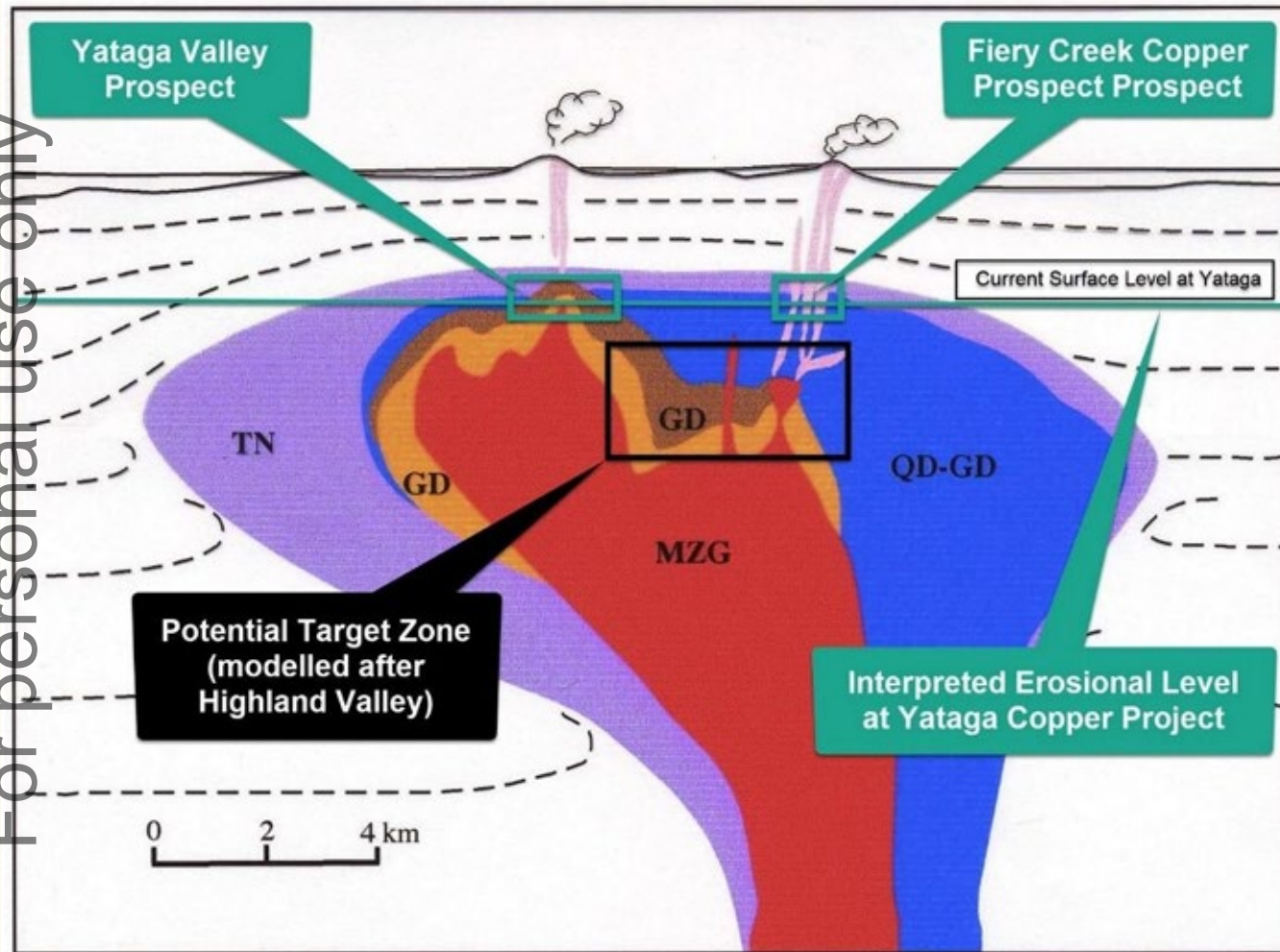
For personal use only



# Conceptual Model



For personal use only



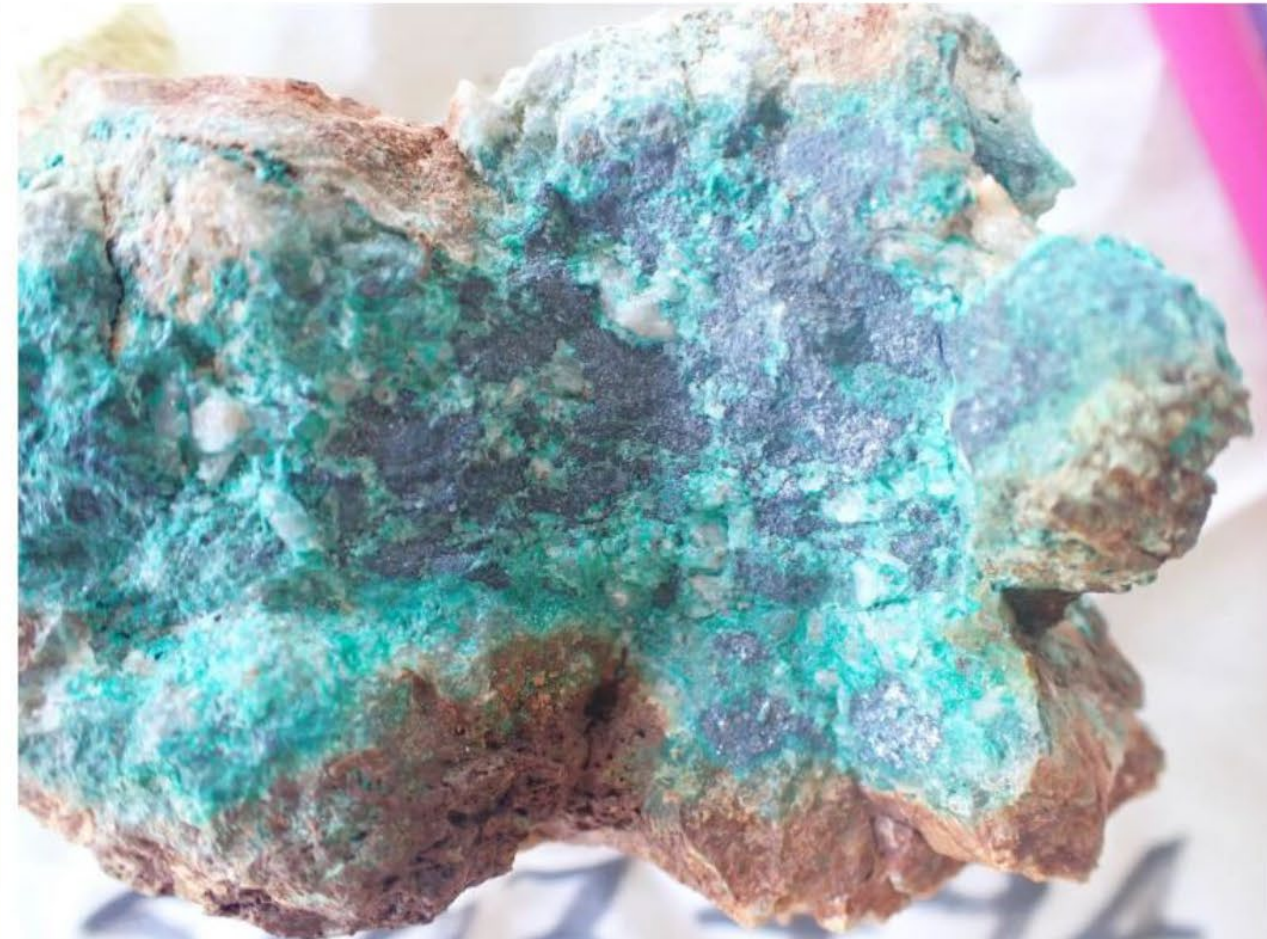
Modified after McMillan, W.J. 1976a, Geology and genesis of the Highland Valley ore deposits and the Guichon Creek batholith; in Sutherland Brown, A., ed., Porphyry Deposits of the Canadian Cordillera: Canadian Institute of Mining and Metallurgy, Special Volume 15, p. 85-104



*Highland Valley Mine, BC Canada - One of the largest copper mines in the world, Highland Valley Copper is owned by Teck Resources. Photo Credit Wikimapia*



# Fiery Creek Vein Samples



For personal use only

Sample ESSO2045 - A white, frosty to glassy quartz vein hosting abundant drusy cavities lined with euhedral prismatic quartz crystals encrusted with supergene malachite and chrysocolla developed over sooty tenorite (Coordinates Location 774873E 8007987N)

Sample ESSO2494 – (460ppm Ag, 1.25% Ba, 23.51% Cu, 14ppm In). White frosty quartz vein invaded by a later massive sulphide event as a mix of black tenorite ( $\text{CuO}$ ) and sooty to dark grey chalcocite ( $\text{Cu}_2\text{S}$ ) replaced at its margins by crystalline fibrous malachite and minor chrysocolla (Coordinates Location 773511E 8007365N).



# Upcoming Exploration



EMU

## FIELD PROGRAMME

- In-field rock collection programme underway to provide further geochemical correlation for modelling of hydrothermal fluid flows
- Infill pXRF termite mound sampling programme over anomalous zones
- 2 geophysical data programmes in progress
  - Helicopter Electromagnetic Survey – pending
  - Pole Dipole Array IP Resistivity MT ground survey
- Preparation of vectors for drill programme from geochemistry and geophysics surveys and data modelling



# Investment Summary



EMU



- Yataga Copper Project increasing potential of a significant world class Australian porphyry discovery
  - Yataga Valley Copper Prospect – recent copper anomalism discovery
  - Fiery Creek Copper Prospect – original copper anomalism discovery
- Ongoing exploration activity to define drill targets with 3D modelling of geometry of the Cu source
- Gold assays from grid controlled termite mound sampling survey pending
- Extensive gold, base metals and historic mineral endowment at Georgetown highly prospective





EMU

## Contact Us

**DOUG GREWAR CEO**  
doug@emunl.com.au

**EMU NL**  
10 Walker Avenue  
West Perth WA 6005

+61 (0)419 833604  
[www.emunl.com.au](http://www.emunl.com.au)  
Investorhub.emunl.com.au



EMU Investor Hub Signup

[info@emunl.com.au](mailto:info@emunl.com.au)

ABN 50 127 291 927

ASX:EMU  
ASX:EMUCA