

# ASX ANNOUNCEMENT

ASX RELEASE: 24 September 2024

## Gold trend extension from soils in Southern Cross

### HIGHLIGHTS



*Targeted auger drilling program over E77/2367 has extended gold in soil anomalies over 1.7km.*



*Multiple gold trends with assays returned up to 969.5ppb Au from UltraFines analysis.*



*Multiple lithium readings +50ppm over greenstone terrane proximal to granites.*

**XTC Lithium Limited (ASX: XTC) (XTC, or the Company)** is pleased to announce the results from a recent auger drilling program completed across E77/2367 in its Southern Cross tenement package. A total of 590 samples (477 auger drill holes, 113 infill soil samples) were taken across the tenement targeting primarily gold.

The geochemical auger drilling program has delineated multiple gold trends targeting extensions of the historic Glen Innes gold prospect which lies between the Battler Gold mine and historic Glendower Gold mine halfway between Southern Cross and Marvel Loch set in the Archean Southern Cross Greenstone Belt. The new sampling program extended previous soil anomalies by 400m along strike through an area of historic drilling. The narrow, close spaced, historic drilling covers less than 75m across strike, where the +50ppb Au soil anomalies continue for 500m across strike, which demonstrates a large area of under-explored ground where parallel structures could exist. Additionally, a large 1.3km long by 300m wide anomalous zone of +50ppb Au continues less than 200m to the north of this area which has had only 3 historic RC drill holes and limited RAB drilling. The anomaly strikes parallel to the historic Glendower pit, 600m to the east.



## ASX ANNOUNCEMENT

24 September 2024

A new small zone of anomalous gold in soils is noticed less than 500m east of the Battler mine open pit on the north side of a lithological contact in the 500k geology maps and warrants additional infill sampling.

A prior soil sample grid on 100x40m spacing was infilled to ~50m x 40m using the same method (sieved to -2mm from ~30cm depth) for comparable results. The results confirmed a +50ppb Au zone with a +30ppb Au hal over ~300m strike and a width of 50-250m, which has been marked as a high-priority target for depth testing.

A grid pattern was also sampled over the Catherine prospect to the North, which has been subject to historic shallow prospecting and excavations. Multiple anomalies for gold were returned from sampling which remains open within Xantippe's tenement boundaries and can be seen in Figure 2.

The numerous gold anomalies proximal to previously operating open pit gold mines provide compelling targets for additional field work and in-depth analysis.

Additionally, low-level lithium anomalies between 50 and 59.7ppm Li were returned in the central area in some small clusters. No distinct patterns were observed above the 50ppm threshold to suggest a pegmatite field, but lithium targets will continue to be considered during more focused gold exploration.

A 4WD mounted auger was utilised to take samples from approximately 1m-1.5m depth to reduce the risk of sampling transported material or ground disturbed by prospecting activity. Auger contractors Gyro Australia logged details for each sample including colour, HCl reaction and depth. A single sample was collected for each drill hole and samples were analysed via the UltraFines method at Labwest. The CSIRO developed method essentially analyses the fine clay fraction of the sample which is most likely to represent weathered portions of in-situ material, as opposed to transported. The method has proven successful in detecting low level anomalies and provides a full multi-element suite for pathfinder element assessment. XTC will continue to investigate the anomalies further with additional desktop interpretation and planning an infill program to refine targets for depth testing.

For personal use only





# ASX ANNOUNCEMENT

24 September 2024

For personal use only

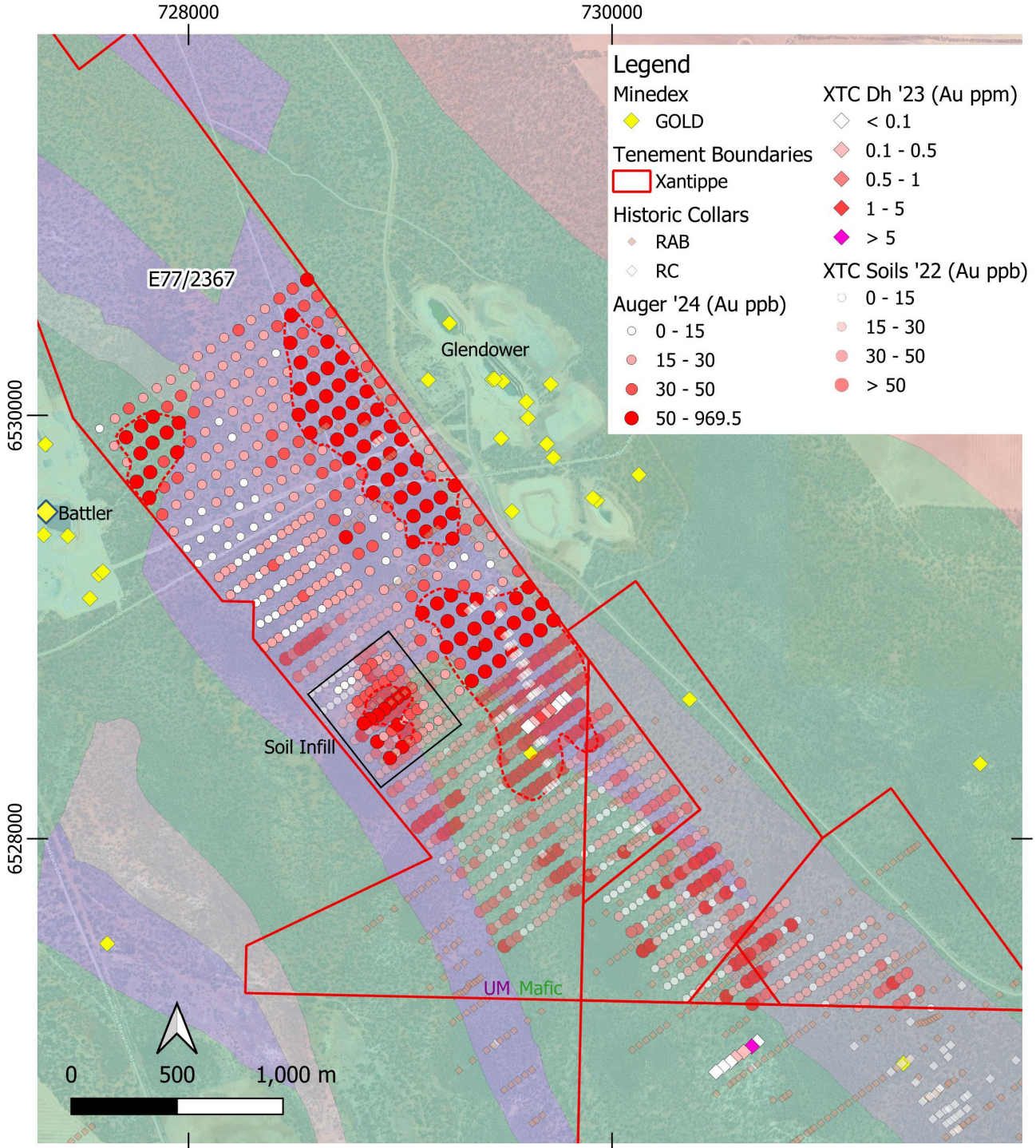


Figure 1 – Auger soil results for Gold showing trend lines above 50ppb Au against 500k geology.





# ASX ANNOUNCEMENT

24 September 2024

For personal use only

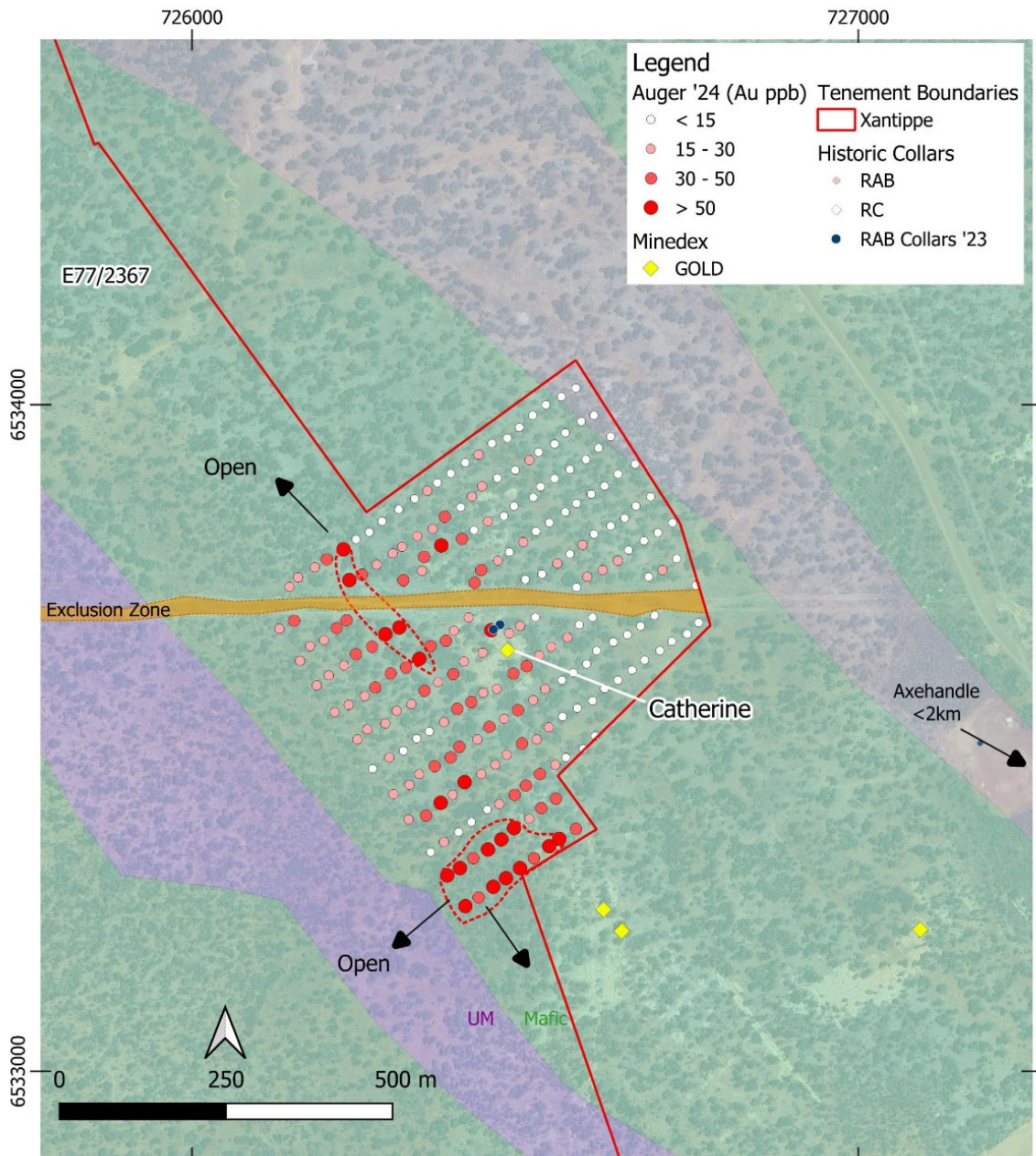


Figure 2 – Auger soil results for Gold at Catherine Prospect against 500k geology.





# ASX ANNOUNCEMENT

24 September 2024

For personal use only

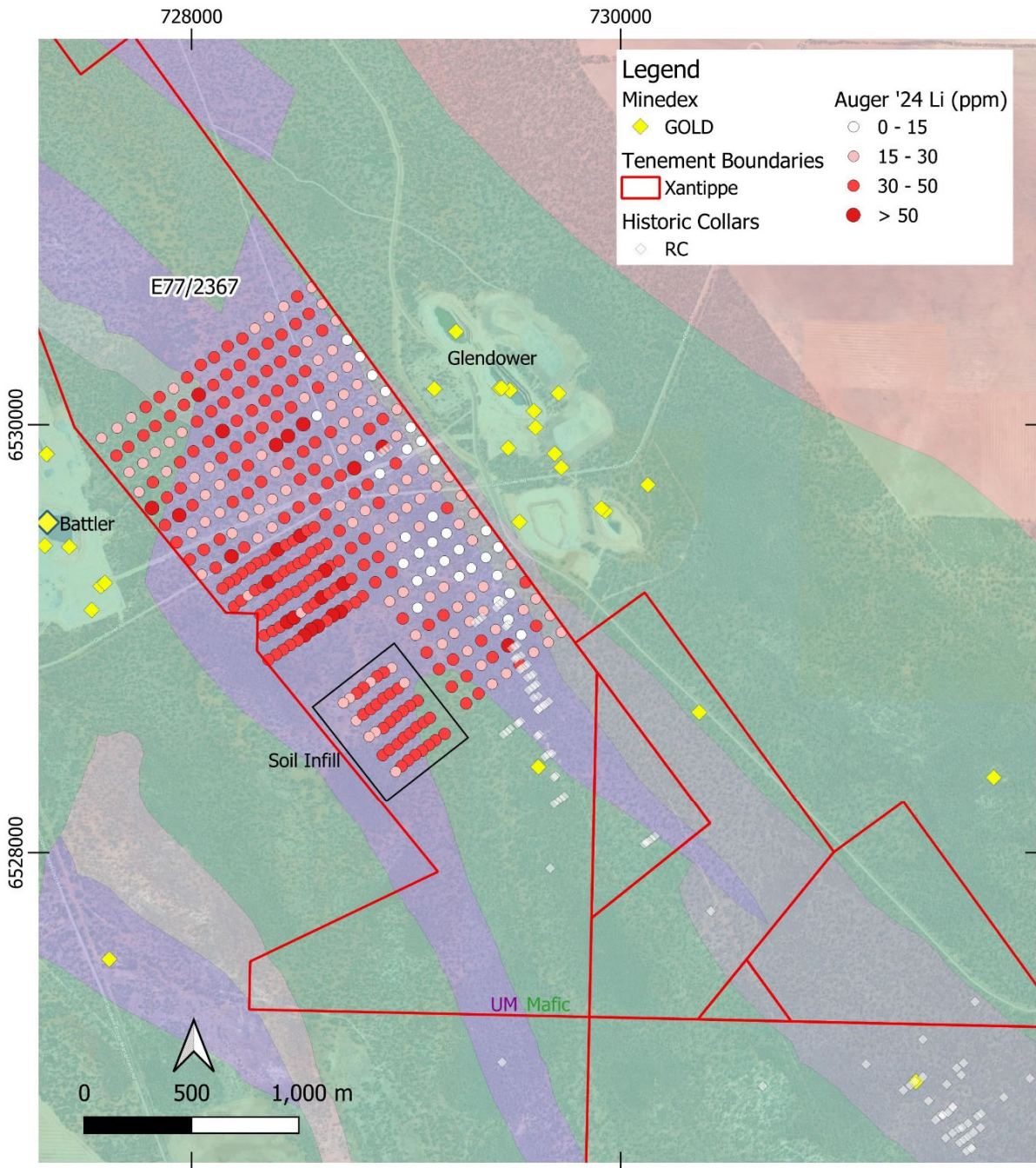


Figure 3 – Auger soil results for Lithium against 500k geology.



# ASX ANNOUNCEMENT

24 September 2024

For personal use only

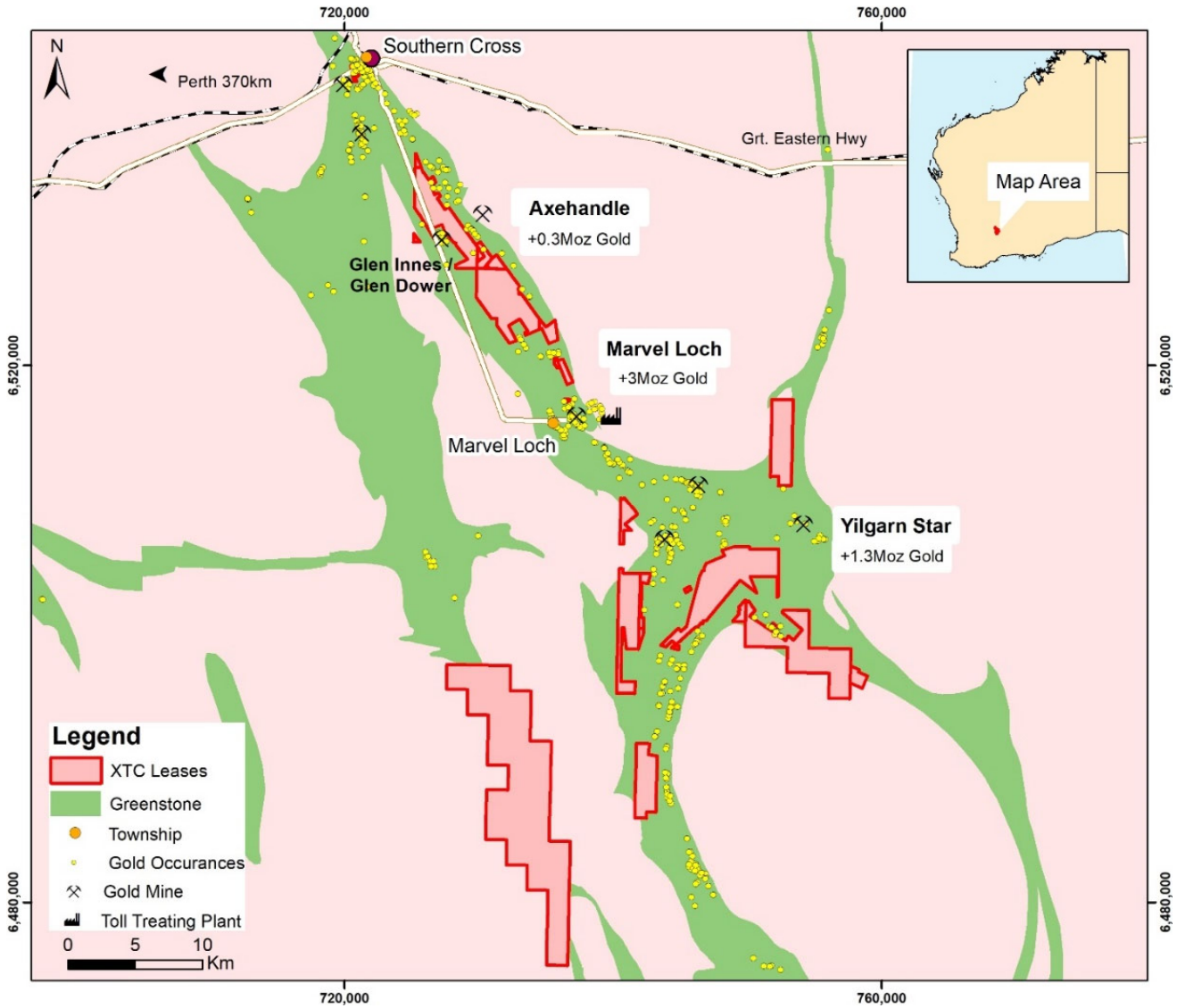


Figure 4 – Southern Cross project location and tenement package



# ASX ANNOUNCEMENT

24 September 2024

Table 1- results

Hole_ID	Easting	Northing	RL	Depth	As	Au (ppb)	Bi	Cr	Cs	Li	Nb	Ni	Ta
XR01104	726576	6533364	358.8	1	6.2	47	0.091	102	1.25	21.2	0.22	76.9	0.002
XR01105	726551	6533349	347.4	1.5	6.8	99.6	0.064	87	0.8	15.1	0.14	60.4	0.001
XR01106	726536	6533338	351.4	1.5	8.6	69.8	0.061	117	0.75	16.7	0.15	66.7	0.002
XR01107	726513	6533320	345.2	1	6.4	46.1	0.093	405	1.31	15.3	0.18	83.7	0.002
XR01108	726492	6533305	353.7	1.5	10	236	0.057	709	0.97	16.5	0.18	104	0.001
XR01109	726471	6533290	340.1	1.5	9.7	196.4	0.214	638	2.34	25.5	0.17	204	0.002
XR01110	726452	6533277	347.8	1	11	106.9	0.306	561	3.17	35.4	0.19	203	0.004
XR01111	726430	6533261	347.6	0.5	13.2	38.4	0.324	506	3.52	41	0.35	204	0.003
XR01112	726410	6533248	343.8	1.5	10.6	70.7	0.214	400	2.28	22.8	0.18	146	0.002
XR01113	726383	6533294	343.1	1	12.4	53.5	0.262	414	2.4	22.9	0.33	198	0.002
XR01114	726402	6533305	343.2	1.5	10.9	201.5	0.217	384	2.18	25.1	0.24	177	0.004
XR01115	726422	6533320	343.3	1.5	6.3	39.5	0.101	144	1.02	13.6	0.22	58.3	0.002
XR01116	726444	6533333	343.3	1	7.2	81.3	0.121	211	1.37	15.1	0.19	81.7	0.002
XR01117	726464	6533348	346.8	1.5	7.3	52.9	0.148	363	1.9	23.8	0.28	108	0.004
XR01118	726483	6533365	347	1.5	5.4	56.1	0.091	663	1	17.8	0.27	72.5	0.002
XR01119	726506	6533379	340.8	1.5	6.6	26.4	0.07	123	0.79	10.9	0.21	57.8	0.002
XR01120	726524	6533395	350.2	1	6.1	44.1	0.118	151	1.59	20.8	0.3	106	0.002
XR01121	726546	6533409	350.6	1	7.6	35	0.069	80	0.89	14.9	0.17	55.1	-0.001
XR01122	726605	6533503	343.2	1.5	13.9	12.8	0.123	235	1.41	15.9	0.2	112	0.002
XR01123	726587	6533484	348.7	1	11.4	13.2	0.131	256	1.47	17.1	0.24	111	0.005
XR01124	726561	6533471	345.7	1	10.1	12.8	0.104	230	1.02	12.4	0.18	95	0.002
XR01125	726545	6533460	349.3	1.5	11	15.9	0.108	268	1.01	11.9	0.23	118	0.002
XR01126	726522	6533446	347.4	1.5	10.5	33.7	0.089	149	0.95	15.4	0.17	74.3	0.002
XR01127	726501	6533429	349.3	1.5	13.2	37.5	0.098	184	1.12	15.9	0.17	89.3	-0.001
XR01128	726484	6533415	345.2	1.5	12.6	38.6	0.128	280	1.53	15.3	0.2	145	0.002
XR01129	726461	6533401	350.8	1.5	12.7	19.8	0.142	337	1.57	16.6	0.21	147	0.004
XR01130	726443	6533393	355.1	1	11.7	14.8	0.168	417	1.76	16.5	0.22	171	0.004
XR01131	726419	6533374	343.2	1.5	12.8	13.9	0.19	446	2.2	20.4	0.27	205	0.002
XR01132	726400	6533359	340.2	0.5	11.4	12.2	0.194	450	2	20.5	0.25	206	0.003
XR01133	726378	6533344	347.1	1.5	10	16.6	0.083	269	0.86	14.3	0.18	100	0.003
XR01134	726358	6533329	347.2	1	13.4	11.9	0.173	474	1.79	19.7	0.14	220	0.003
XR01135	726760	6533673	352	1.5	28.4	11.4	0.178	491	1.67	13	0.34	175	0.004
XR01136	726743	6533656	355.3	1	14.2	10.5	0.132	441	1.19	14.4	0.28	177	0.002
XR01137	726720	6533645	351.8	1.5	18	11.1	0.109	419	1.15	12.8	0.19	133	0.002
XR01138	726702	6533631	360.6	1.5	11	9.8	0.13	413	1.14	15.3	0.19	182	0.003
XR01139	726679	6533617	355.1	1.5	13.5	8.9	0.134	363	1.14	12.3	0.21	161	0.004
XR01140	726660	6533602	347.9	1	11.9	8.4	0.142	355	1.38	13.3	0.19	172	0.004
XR01141	726639	6533587	348.9	1.5	14.2	9	0.129	301	1.2	11.2	0.28	132	0.004
XR01142	726619	6533574	351.2	1	8.5	10	0.086	158	0.98	10.5	0.27	73.1	0.004
XR01143	726601	6533556	352.6	1	9	8.9	0.104	200	0.85	13.3	0.37	83.6	0.003
XR01144	726578	6533545	353.2	1	9.2	9.1	0.112	201	0.97	9.48	0.33	75.8	0.004

For personal use only





# ASX ANNOUNCEMENT

24 September 2024

For personal use only

Hole_ID	Easting	Northing	RL	Depth	As	Au (ppb)	Bi	Cr	Cs	Li	Nb	Ni	Ta
XR01145	726556	6533532	354.5	1	8.3	10.6	0.077	151	0.69	13.2	0.2	67.4	0.004
XR01146	726535	6533516	354.3	1.5	11.2	18.4	0.106	192	1	14.3	0.33	117	0.006
XR01147	726517	6533498	352.8	1.5	8.7	21.8	0.093	139	0.97	13.9	0.2	70.8	0.006
XR01148	726495	6533492	352.7	1.5	10.5	35.8	0.076	141	0.82	13.3	0.11	58.5	0.002
XR01149	726472	6533475	351.3	1.5	10.2	23.4	0.116	198	1.09	13.9	0.14	97	0.004
XR01152	726455	6533460	347.1	1.5	11.3	17.3	0.106	310	0.85	10.7	0.23	130	0.003
XR01153	726434	6533446	356.8	1.5	9.4	18.6	0.104	242	0.85	10.5	0.29	94.3	0.004
XR01154	726409	6533434	352.8	1.5	18.6	64.9	0.17	622	1.54	9.86	0.13	214	0.003
XR01155	726391	6533415	356.8	1.5	12.3	27.4	0.104	302	0.89	16.9	0.21	92.8	0.002
XR01156	726373	6533403	362.6	1.5	10.2	90	0.168	496	1.57	26.1	0.15	157	0.009
XR01157	726351	6533384	353.2	1.5	12.5	34.7	0.118	291	1.09	10.8	0.28	107	0.002
XR01158	726325	6533378	351.4	1.5	10.1	24.7	0.113	312	0.9	8.83	0.11	107	0.003
XR01159	726302	6533416	351.7	1.5	15	20.1	0.163	504	1.56	16.4	0.27	115	0.003
XR01160	726326	6533430	351.1	1.5	15.1	15.9	0.139	455	1.35	12.9	0.32	103	0.005
XR01161	726341	6533446	358.5	1.5	25.4	28.5	0.186	790	2.06	26.4	0.22	174	0.002
XR01162	726364	6533458	352.8	1.5	28.8	41.1	0.204	1130	1.69	21.1	0.19	198	0.003
XR01163	726388	6533471	350.1	1.5	19.7	32.4	0.183	863	1.6	13.9	0.09	151	0.003
XR01164	726401	6533487	346.1	1.5	23.7	32.3	0.173	724	1.64	27.5	0.23	144	0.003
XR01165	726428	6533498	345.8	1	26.9	23.5	0.186	688	1.6	23.4	0.09	135	0.002
XR01166	726446	6533517	346.5	1.5	6.7	38.9	0.1	133	1.22	15.5	0.21	79.1	0.003
XR01167	726468	6533529	355	0.5	3.9	24.4	0.112	128	1.53	20.2	0.34	94.1	0.008
XR01168	726489	6533542	365.7	1.5	8.4	37.5	0.088	88	1.07	15.2	0.21	62.3	0.002
XR01169	726512	6533557	347.6	1	9.3	26.2	0.094	77	1.11	16.3	0.27	47.8	0.003
XR01170	726530	6533574	364.4	1.5	10.9	24.2	0.093	74	1.01	16.1	0.23	43.2	0.004
XR01171	726555	6533587	346.6	1.5	8.3	10.7	0.064	56	0.71	12.1	0.27	28.7	0.005
XR01172	726572	6533598	346.5	1	9.2	9	0.115	81	1.86	17.2	0.29	57.8	0.003
XR01173	726592	6533611	353.1	1.5	9.5	10.3	0.072	56	0.99	13.7	0.18	33.9	0.002
XR01174	726607	6533631	353.1	1.5	11	14.6	0.084	62	1.35	18.3	0.27	35.4	0.002
XR01175	726632	6533644	354.2	1	11.1	8.2	0.105	70	1.54	13.1	0.24	30.2	0.002
XR01176	726653	6533655	343.4	1	13.3	14.3	0.117	80	1.98	13	0.28	38	0.002
XR01177	726673	6533668	345	1	15.8	14.3	0.104	75	1.6	18.3	0.39	42.1	0.002
XR01178	726694	6533684	350.3	1	32.9	9.3	0.077	63	1.05	11.3	0.44	31.7	0.002
XR01179	726756	6533729	349.2	1	12.7	12.7	0.222	459	2.36	24.9	0.19	241	0.004
XR01180	726727	6533769	349.5	1.5	9.1	8.5	0.077	64	1.25	19.4	0.19	43.8	0.002
XR01181	726706	6533752	357.5	1.5	30.2	19.7	0.056	49	0.87	17.1	0.19	31.9	0.002
XR01182	726685	6533742	350.5	1.5	17.2	10.5	0.091	54	1.21	14.5	0.32	40.7	0.002
XR01183	726601	6533681	354.9	1.5	12.7	13.8	0.086	60	1.43	15.6	0.31	31	0.002
XR01184	726581	6533670	353.6	1.5	14.5	10.5	0.075	48	0.86	14.5	0.18	28.7	0.002
XR01185	726563	6533651	351.9	1	12.9	16.1	0.072	53	0.92	13.6	0.2	31.9	0.002
XR01186	726539	6533637	352	1.5	4	19.3	0.071	58	1.3	17.5	0.27	43.3	0.002
XR01187	726521	6533624	352.8	1.5	10.5	21.1	0.078	57	1.01	16.3	0.18	45.2	0.001
XR01188	726502	6533608	355.3	0.5	5.5	33.3	0.104	87	1.71	20.9	0.36	65.1	0.002
XR01189	726482	6533597	354.7	1.5	11.7	40.6	0.096	73	1.14	17.7	0.23	51.2	0.002





# ASX ANNOUNCEMENT

24 September 2024

For personal use only

Hole_ID	Easting	Northing	RL	Depth	As	Au (ppb)	Bi	Cr	Cs	Li	Nb	Ni	Ta
XR01190	726457	6533574	353.2	1.5	7.9	20.7	0.061	60	0.81	12.3	0.16	44.2	0.001
XR01191	726437	6533568	350	0.5	5.1	28.3	0.052	54	0.71	12.2	0.19	41.3	-0.001
XR01192	726419	6533554	344.8	1.5	6.1	33.1	0.064	75	0.87	12.6	0.17	50.7	-0.001
XR01193	726398	6533544	350.4	1	5.2	35.4	0.074	114	1.07	15.9	0.19	72.6	-0.001
XR01194	726378	6533524	349.3	1.5	12.9	24.8	0.088	496	0.96	10.2	0.2	125	0.003
XR01195	726356	6533510	336.4	1.5	17.4	14.7	0.157	529	1.83	15.6	0.22	136	0.003
XR01196	726337	6533499	329.2	1	8.9	13.3	0.119	325	1.26	17.3	0.21	85.9	0.002
XR01197	726317	6533481	350.9	1	9.5	13.1	0.105	259	0.99	13	0.22	72	0.002
XR01198	726296	6533471	339	1.5	9.9	18.8	0.138	412	1.47	21.2	0.27	102	0.002
XR01199	726271	6533454	346.4	1	11.1	9.5	0.158	429	1.49	17.4	0.34	113	0.003
XR01202	726248	6533498	342.2	0.5	14.8	19.5	0.21	618	2.1	24.3	0.36	161	0.002
XR01203	726263	6533513	345.3	1	10.2	17.2	0.191	460	1.84	19.9	0.28	117	0.003
XR01204	726290	6533522	352.6	1	10.9	23.5	0.173	379	1.85	17.3	0.25	108	0.001
XR01205	726307	6533541	347.9	1.5	11.4	15.3	0.167	437	1.91	20.2	0.22	98	0.002
XR01206	726329	6533551	348.8	1.5	18.4	25.7	0.166	568	2.01	20.8	0.24	109	0.002
XR01207	726349	6533571	348.5	1.5	12.8	36.3	0.089	180	1	13.4	0.26	57.4	-0.001
XR01208	726369	6533584	343.3	1.5	6.4	29	0.064	81	0.83	18.6	0.26	53.7	-0.001
XR01209	726392	6533596	350.2	0.5	6.7	35	0.073	73	0.85	13.2	0.25	45.2	-0.001
XR01210	726408	6533615	353	1.5	11.1	26.2	0.063	64	0.9	16.5	0.21	40.8	-0.001
XR01211	726436	6533628	346.6	1.5	13.1	29.4	0.062	62	0.85	12.9	0.17	31.7	-0.001
XR01212	726449	6533662	351.4	1.5	21.1	111.7	0.108	79	1.27	11.8	0.32	46.9	0.001
XR01213	726476	6533657	354.1	1	18.8	25.8	0.076	61	0.93	9.39	0.26	37.6	0.002
XR01214	726492	6533668	354	1	3.6	16.8	0.04	44	0.64	12.3	0.15	22.2	0.001
XR01215	726515	6533681	351.9	0.5	4.6	10.5	0.102	88	1.73	22.9	0.52	55.6	0.002
XR01216	726577	6533726	356.5	1	13.1	10.1	0.109	85	1.7	15.6	0.44	39.4	0.006
XR01217	726593	6533742	358.2	1.5	15.5	15.6	0.098	67	1.47	15	0.56	29.1	0.003
XR01218	726616	6533752	357	0.5	20.2	15.4	0.22	178	2.58	29.2	0.84	72.2	0.002
XR01219	726639	6533766	354.6	0.5	23.7	16.3	0.123	99	1.71	19.9	0.78	44.8	0.002
XR01220	726655	6533782	355.6	1.5	29	4.8	0.033	25	1.05	10.5	0.15	14	0.002
XR01221	726678	6533796	350.1	0.5	9.2	9.9	0.051	44	1.59	19.1	0.61	26.5	0.003
XR01222	726699	6533808	353	1	11.5	9.6	0.055	40	0.83	11.1	0.31	23.7	0.001
XR01223	726721	6533823	352.1	1	4.5	8.2	0.081	75	1.02	13.7	0.4	37.3	0.002
XR01224	726688	6533862	351.8	1.5	3.9	6.6	0.047	65	0.54	6.69	0.25	31.4	-0.001
XR01225	726666	6533848	352.3	1	6.1	6.6	0.046	38	0.64	15.6	0.41	23.7	0.001
XR01226	726649	6533830	349.4	1.5	13.3	3.8	0.02	8	0.29	9.74	0.28	7.3	-0.001
XR01227	726628	6533818	355.8	0.5	9	7.8	0.052	46	0.96	12.9	0.46	27.3	0.001
XR01228	726603	6533806	353.2	0.5	9.7	10	0.049	46	1.01	11.7	0.54	27	0.001
XR01229	726586	6533790	351.5	0.5	31.1	17.5	0.044	41	0.78	8.78	0.86	22	0.001
XR01230	726567	6533776	357.6	1.5	61.7	11	0.072	51	1.13	10.8	0.76	24.4	0.002
XR01231	726548	6533762	348.9	1.5	31.3	15.5	0.076	51	1.19	9.94	0.5	23	0.001
XR01232	726525	6533746	353	1.5	11	12.2	0.038	37	0.74	10.2	0.43	19.5	-0.001
XR01233	726500	6533738	350.9	0.5	8.5	13.5	0.132	107	1.78	18.7	0.5	57.3	0.002
XR01234	726415	6533681	349.9	0.5	7.1	24.7	0.212	183	3.13	29.1	0.59	110	0.003



# ASX ANNOUNCEMENT

24 September 2024

For personal use only

Hole_ID	Easting	Northing	RL	Depth	As	Au (ppb)	Bi	Cr	Cs	Li	Nb	Ni	Ta
XR01235	726393	6533661	346.6	1	9.4	24.1	0.064	68	0.95	12.4	0.28	38.1	0.002
XR01236	726381	6533646	348	0.5	8.9	32.6	0.067	71	0.97	15	0.25	51.7	-0.001
XR01237	726358	6533638	350.6	1.5	6.8	42.8	0.072	87	1	15.4	0.28	50.2	-0.001
XR01238	726341	6533619	345.7	1.5	5.8	57.8	0.074	115	1.04	15.5	0.24	57.6	-0.001
XR01239	726321	6533606	350.8	1	6.7	44.4	0.067	90	0.82	14.2	0.22	47.2	0.001
XR01240	726298	6533597	343.3	1.5	13.3	45.3	0.106	231	1.05	21.1	0.33	66.8	-0.001
XR01241	726275	6533576	344.6	1.5	10.4	31.9	0.103	185	1.05	20.7	0.3	68.5	0.001
XR01242	726259	6533563	349.7	1	9.4	21.5	0.15	287	1.39	23.2	0.31	83.5	0.001
XR01243	726235	6533550	345	1	7.6	16.9	0.153	232	1.52	23.1	0.37	92.3	0.004
XR01244	726214	6533539	341.8	1.5	9.8	18.7	0.2	326	1.97	28.4	0.34	132	0.002
XR01245	726187	6533579	342.8	1	8.2	17.5	0.186	243	1.69	23.4	0.34	101	0.002
XR01246	726205	6533594	345.8	1.5	8.8	20.3	0.238	250	2.19	30.8	0.37	114	0.002
XR01247	726228	6533609	346.6	1.5	7.9	23.5	0.12	142	1.23	24.5	0.33	70.6	0.002
XR01248	726246	6533626	348	1.5	7.2	31.8	0.088	99	0.93	16.7	0.42	49.7	0.002
XR01249	726270	6533637	348.2	1.5	7.3	41.7	0.088	150	0.98	21.7	0.24	52.4	0.001
XR01252	726290	6533656	349.5	1.5	7.5	75.4	0.073	78	1.02	13.5	0.35	51.1	-0.001
XR01253	726311	6533666	349.1	1.5	9.3	70.6	0.06	126	0.79	20.4	0.24	40	-0.001
XR01254	726424	6533733	352.5	1.5	50.3	36.6	0.084	43	0.87	14.4	0.25	32.1	0.001
XR01255	726434	6533752	356.7	0.5	6.9	32.6	0.12	84	1.58	22.2	0.62	54.5	0.009
XR01256	726459	6533766	356.8	1.5	12.4	17.9	0.036	29	0.56	19.1	0.39	21.4	-0.001
XR01257	726476	6533779	356.1	1.5	4.8	13.8	0.096	72	1.35	18.9	0.56	45.1	0.001
XR01258	726497	6533794	356.3	0.5	4.1	15.5	0.105	80	1.41	17.3	0.46	50.6	0.003
XR01259	726516	6533810	357.5	1.5	5.4	4.1	0.127	69	2.05	20.1	0.28	25	0.002
XR01260	726536	6533823	365.4	0.5	5.3	8.3	0.092	52	1.91	13.7	0.89	25.3	0.003
XR01261	726560	6533839	360.3	0.5	7.6	9.4	0.196	113	2.6	37	1.07	73.9	0.001
XR01262	726577	6533852	361.7	1.5	5.5	10.1	0.027	18	0.48	14.8	0.62	14.8	-0.001
XR01263	726599	6533866	357.1	1	5.3	3.4	0.065	5	1.62	8.82	0.68	8.9	-0.001
XR01264	726619	6533878	358	1.5	4.5	4.5	0.033	9	0.47	17	0.65	9.9	-0.001
XR01265	726639	6533896	364	1.5	6.1	6.1	0.065	46	0.39	7.56	0.56	25.5	-0.001
XR01266	726665	6533911	351.7	1	4	13	0.025	50	0.38	13.3	0.37	23	0.001
XR01267	726628	6533952	369.6	1.5	3.7	7.9	0.032	79	0.27	13.9	0.4	33.3	-0.001
XR01268	726610	6533935	366.4	1.5	6.5	6.5	0.038	37	0.48	10.6	0.42	26.5	-0.001
XR01269	726591	6533918	365.2	1.5	4.3	4.5	0.054	36	0.89	14.8	0.52	31.6	0.001
XR01270	726567	6533903	364.9	1	4.4	8.1	0.04	26	1.27	17.6	1.01	21.6	0.001
XR01271	726544	6533889	366.1	0.5	8	11	0.039	30	0.79	15	0.89	23.7	-0.001
XR01272	726523	6533877	365.7	0.5	15.3	2.1	0.247	128	2.94	28.2	2.04	60.7	0.002
XR01273	726512	6533861	363.9	1.5	3.9	8.5	0.077	57	1.75	15.4	1.08	36.8	0.006
XR01274	726483	6533848	362	1	6.2	12.2	0.063	53	1.15	15.6	0.33	34.7	0.003
XR01275	726468	6533833	362.4	1	13.6	12.2	0.034	37	0.83	11.5	0.24	20.2	-0.001
XR01276	726444	6533825	362.5	0.5	6.7	24.9	0.094	77	1.38	14.4	0.32	45.2	0.002
XR01277	726423	6533812	362	0.5	4.4	12.1	0.142	122	2.11	15	0.38	66.8	0.004
XR01278	726405	6533799	359.5	1	3.2	31.4	0.057	50	0.96	19.2	0.22	31.5	0.002
XR01279	726374	6533789	355	1.5	6.1	54.4	0.044	43	0.76	17.7	0.18	28.7	0.002





# ASX ANNOUNCEMENT

24 September 2024

For personal use only

Hole_ID	Easting	Northing	RL	Depth	As	Au (ppb)	Bi	Cr	Cs	Li	Nb	Ni	Ta
XR01280	726348	6533772	354.6	1	8.1	33.3	0.119	95	1.76	12.8	0.28	64.6	0.003
XR01281	726345	6533751	356.6	1.5	22.7	20	0.13	48	1.01	10.2	0.15	41.4	0.001
XR01282	726317	6533737	356.9	0.5	13.6	34.1	0.054	48	0.68	7.68	0.13	34.5	0.001
XR01283	726232	6533677	349.5	1.5	9.9	45.2	0.098	140	1.36	15.1	0.21	62.2	0.002
XR01284	726217	6533665	354.9	1.5	9.9	45.9	0.112	124	1.56	16.1	0.24	67.8	0.003
XR01285	726198	6533647	349.7	1.5	8.3	18.4	0.112	123	1.35	14.1	0.2	57.1	0.002
XR01286	726177	6533638	350.8	1	7.6	19.8	0.18	198	2.21	16.4	0.2	92.4	0.003
XR01287	726162	6533616	348	1	6.3	27.8	0.165	190	1.87	13.9	0.26	91	0.003
XR01288	726131	6533664	341.9	1	6.4	22.9	0.175	187	2.21	14.9	0.3	97.2	0.003
XR01289	726153	6533676	344.4	1	6.7	31.2	0.174	194	2.11	20.2	0.3	87.7	0.002
XR01290	726236	6533737	346.8	1	4.5	88	0.092	107	1.31	10.9	0.25	66.8	0.002
XR01291	726255	6533745	350.5	1.5	6.1	46.8	0.055	69	0.83	13.6	0.19	48.2	0.001
XR01292	726277	6533760	352	1	12.4	24.7	0.062	60	0.79	12.5	0.34	46.3	0.001
XR01293	726301	6533777	354.2	0.5	9.2	24.3	0.04	44	0.64	13.6	0.23	47.5	0.001
XR01294	726315	6533787	351	0.5	10.8	18.5	0.064	42	0.87	1.35	0.19	39.1	0.001
XR01295	726338	6533803	354.5	1	11.3	16.3	0.144	118	1.73	16.3	0.22	66.9	0.004
XR01296	726361	6533814	352.9	1.5	12.8	21	0.109	81	1.43	9.98	0.19	40.1	0.003
XR01297	726379	6533832	351.9	1	4.5	32	0.068	68	1.18	13.7	0.26	42.2	0.002
XR01298	726403	6533846	358.1	0.5	7.5	14.2	0.24	189	2.94	20.7	0.41	105	0.006
XR01299	726420	6533862	364.9	0.5	6.5	21	0.104	92	1.68	11.4	0.35	55.7	0.005
XR01302	726435	6533878	362.8	1	5.4	15.9	0.079	67	1.45	15.9	0.34	39.9	0.003
XR01303	726458	6533890	351.5	0.5	4.5	14.3	0.093	71	1.66	10.7	0.48	44.1	0.004
XR01304	726485	6533902	358.9	0.5	4.6	13.9	0.084	69	1.59	9.77	0.59	43.6	0.006
XR01305	726506	6533917	356.7	0.5	5.7	18.4	0.114	88	2.04	15	0.67	52.2	0.005
XR01306	726520	6533929	353.2	0.5	17.1	11	0.033	23	0.71	5.75	0.32	15.8	0.002
XR01307	726544	6533941	351.5	0.5	4.2	14.1	0.05	36	1.05	6.33	0.44	23.3	0.002
XR01308	726560	6533958	358.4	0.5	2.4	6.5	0.037	24	0.93	6.75	0.29	16.8	0.002
XR01309	726584	6533975	359.5	1.5	2.7	5.9	0.063	49	0.92	12	0.33	25.9	0.002
XR01310	726603	6533984	352.5	1.5	14.1	5	0.031	44	0.59	6.12	0.19	25.7	0.002
XR01311	726576	6534025	357.1	0.5	2.9	5.5	0.022	33	0.28	8.43	0.17	19.1	0.001
XR01312	726554	6534012	356.5	0.5	3.5	4.4	0.022	25	0.37	13.6	0.16	16.8	0.002
XR01313	726531	6534000	356.1	0.5	3.8	11.3	0.039	24	0.68	8.31	0.41	16	0.004
XR01314	726511	6533984	356.1	0.5	8.1	7.1	0.074	13	2.45	19.8	0.74	9.3	0.001
XR01315	726491	6533966	355.7	0.5	3.5	14.9	0.043	33	1.15	6.5	0.49	21.1	0.001
XR01316	726473	6533950	355.8	1.5	6	14.3	0.028	23	1.7	11.4	1.08	15.7	0.003
XR01317	726450	6533942	355.9	1.5	9.8	9.9	0.257	185	3.12	27.7	1.05	52.8	0.002
XR01318	726430	6533925	355.8	1.5	7.8	15.8	0.074	81	1.39	17.9	0.37	43.1	0.002
XR01319	726410	6533913	356.3	1.5	3.9	14.1	0.108	93	1.55	16.9	0.44	48.6	0.003
XR01320	726388	6533897	356.8	0.5	7.2	4.7	0.234	200	3.02	29.1	0.4	104	0.005
XR01321	726368	6533883	354.7	1.5	8	14	0.041	63	0.76	12.7	0.15	28.1	0.002
XR01322	726353	6533871	351.5	1	3.1	24	0.102	119	1.56	16	0.31	59.8	0.002
XR01323	726334	6533859	356.2	0.5	6.2	7.5	0.179	198	2.57	23.4	0.58	87.9	0.005
XR01324	726310	6533843	353.8	1	14.8	14.8	0.063	70	1.01	22	0.26	39.1	0.002



# ASX ANNOUNCEMENT

24 September 2024

For personal use only

Hole_ID	Easting	Northing	RL	Depth	As	Au (ppb)	Bi	Cr	Cs	Li	Nb	Ni	Ta
XR01325	726285	6533825	352.9	0.5	9.6	14.3	0.071	72	1.17	15.9	0.3	51.3	0.002
XR01326	726266	6533809	348.8	1	12.8	11.9	0.044	71	0.62	14.1	0.15	35.1	0.001
XR01327	726246	6533798	346.4	1	9.2	11.8	0.044	75	0.62	14.1	0.16	37	0.001
XR01328	726227	6533783	343.9	1	5.5	57.6	0.04	68	0.63	9.99	0.17	40.2	-0.001
XR01329	726202	6533768	347.3	1.5	7.6	47.3	0.073	99	1	16.8	0.23	49.2	0.001
XR01330	726184	6533756	348.8	1.5	6.4	27.2	0.063	102	0.81	14.4	0.19	37.4	0.001
XR01331	726159	6533741	343.1	1.5	7.2	23.1	0.069	107	0.9	14	0.25	43.8	0.002
XR01332	726146	6533727	344.7	1.5	11.5	26.1	0.102	149	1.31	19.8	0.34	59.3	0.002
XR01333	729723	6529032	371.6	1	13.4	96.8	0.126	626	2.2	27.6	0.14	183	0.005
XR01334	729662	6528985	368.7	1	12.2	113.9	0.162	839	3.01	25.5	0.18	200	0.007
XR01335	729594	6528939	371.9	0.5	19.5	101	0.244	1640	2.13	20.6	0.32	322	0.003
XR01336	729528	6528883	372.1	0.5	20.4	556.6	0.278	1980	4.35	33.4	0.44	252	0.004
XR01337	729467	6528840	368.8	1	11.3	209.2	0.134	501	1.41	19	0.2	90.4	0.014
XR01338	729400	6528790	371.6	1.5	23.7	234.6	0.186	570	2.21	25.3	0.28	204	0.005
XR01339	729337	6528746	371	1	15.2	101.8	0.424	616	3.57	41.3	0.34	216	0.005
XR01340	729279	6528700	369.6	1.5	9.2	22.4	0.528	506	4.68	31	0.14	146	0.011
XR01341	729212	6528778	369.4	1	10.3	27.3	0.495	542	4.47	37.6	0.3	167	0.006
XR01342	729282	6528827	372.9	1.5	14.9	35.4	0.616	593	3.15	41.6	0.33	215	0.004
XR01343	729350	6528878	371.9	1	12.5	77.9	0.232	757	2.13	28.5	0.36	188	0.003
XR01344	729402	6528916	376.8	1.5	13.9	237.7	0.225	764	2.2	30.2	0.4	211	0.003
XR01345	729476	6528971	376.6	0.5	17.7	361.1	0.307	1530	3.32	57.5	0.69	249	0.003
XR01346	729536	6529020	377.7	1	13.6	106.5	0.177	1010	1.47	9	0.4	352	0.002
XR01347	729606	6529062	361.8	1	11.3	92.3	0.161	707	2.45	30.6	0.32	288	0.002
XR01348	729671	6529110	387.5	1.5	11.6	165.7	0.139	495	1.88	28.2	0.37	261	0.003
XR01349	729605	6529188	370.2	1	9.5	72.2	0.152	663	1.51	29.1	0.42	253	0.002
XR01352	729547	6529137	376.6	1	8	53.4	0.145	562	1.81	17.7	0.44	190	0.002
XR01353	729476	6529092	379	1.5	8.1	45.4	0.11	874	1.04	12	0.29	344	0.001
XR01354	729417	6529045	377.8	1.5	14.5	583.1	0.15	1200	2.03	26.5	0.34	282	0.002
XR01355	729350	6528993	379.5	0.5	18.1	283.7	0.277	2050	2.44	43.2	0.19	422	0.002
XR01356	729286	6528945	372	1.5	13.6	147	0.195	868	1.68	25.3	0.36	173	0.002
XR01357	729218	6528905	373.8	1	14.4	66.1	0.383	678	2.88	33	0.46	230	0.003
XR01358	729153	6528860	370.5	1	11.6	42.2	0.425	454	2.95	37.4	0.54	217	0.002
XR01359	729095	6528938	368.4	0.5	10.7	34.4	0.476	453	3.19	37.4	0.42	188	0.003
XR01360	729168	6528978	369.1	1	15.5	29.5	0.343	530	1.52	22.2	0.36	125	0.002
XR01361	729223	6529028	371.5	1.5	12.9	169.2	0.163	741	1.83	22.6	0.21	168	-0.001
XR01362	729296	6529082	370.6	1.5	17.9	497.9	0.233	1530	2.34	25	0.17	373	0.001
XR01363	729360	6529132	379.3	1.5	13	157.7	0.082	969	0.99	18.8	0.32	305	0.001
XR01364	729429	6529177	374.4	1.5	7.5	15.2	0.096	3270	0.6	11.2	0.1	976	-0.001
XR01365	729483	6529214	372.3	1	4.7	26.9	0.107	442	1.13	11.8	0.15	312	-0.001
XR01366	729360	6529245	373	0.5	8.7	21.5	0.116	1270	1.21	16.7	0.31	770	0.001
XR01367	729300	6529197	362.1	1	51	37.4	0.08	4830	0.69	15.5	0.29	939	-0.001
XR01368	729239	6529150	375.6	0.5	29.9	54.3	0.213	3640	2.66	29.7	0.38	747	0.002
XR01369	729174	6529112	374.2	0.5	10.9	125.8	0.148	506	1.8	38.1	0.3	232	0.002





# ASX ANNOUNCEMENT

24 September 2024

For personal use only

Hole_ID	Easting	Northing	RL	Depth	As	Au (ppb)	Bi	Cr	Cs	Li	Nb	Ni	Ta
XR01370	729105	6529067	367.7	0.5	40.7	58.5	0.377	4050	2.15	45.6	0.82	342	0.004
XR01371	729044	6529018	366.5	1	8.8	29.9	0.372	387	2.38	26.4	0.37	110	0.001
XR01372	728984	6529096	365.9	0.5	10.2	17.8	0.381	947	2.53	30.3	0.33	235	0.002
XR01373	729053	6529146	361.3	1	7.6	30.8	0.044	1970	0.39	5.67	0.16	322	-0.001
XR01374	729111	6529197	368	1	14	35.7	0.192	1090	2.58	20.6	0.27	450	0.002
XR01375	729175	6529242	362.8	1	30.1	29.6	0.16	1200	2.64	19.7	0.22	597	0.001
XR01376	729052	6529272	368.9	1.5	8.8	22	0.457	555	5.15	7.65	0.19	381	0.001
XR01377	729556	6529265	364.7	1.5	9.3	35.8	0.117	747	1.73	44.8	0.16	306	0.002
XR01378	729489	6529349	370.8	1	9.5	20.2	0.094	998	1.25	23.2	0.19	260	0.002
XR01379	729425	6529297	373.9	1.5	5	8.8	0.09	599	1	12.9	0.13	545	0.002
XR01380	729247	6529292	366.6	1.5	4.4	9.1	0.098	516	1.54	9.45	0.1	198	0.001
XR01381	729303	6529331	367.2	1.5	3.4	2.6	0.035	955	0.57	5.08	0.05	101	-0.001
XR01382	729371	6529381	369.2	1	9.2	29.5	0.078	1420	1.19	13	0.14	1020	0.003
XR01383	729429	6529429	367.7	1.5	5.6	21.7	0.056	753	0.81	7.98	0.07	224	0.002
XR01384	729373	6529506	373	1.5	5.9	44.1	0.054	808	1.07	14.6	0.1	259	0.002
XR01385	729308	6529461	367.3	1.5	6.4	35.3	0.046	1040	0.67	15.4	0.16	703	0.013
XR01386	729246	6529418	370.8	1.5	19.5	68.6	0.065	3170	0.84	14.6	0.17	684	0.001
XR01387	729178	6529364	372.9	1	15.1	37.5	0.094	1110	2.53	9.46	0.13	327	0.002
XR01388	729115	6529317	372.4	1.5	11.8	36.3	0.067	937	1.85	13.4	0.1	252	0.002
XR01389	728987	6529353	368.9	1.5	9.3	25.7	0.819	443	1.9	11.2	0.11	218	0.001
XR01390	729061	6529402	368.2	1.5	51.9	51.4	0.1	2100	0.97	7.59	0.08	1620	-0.001
XR01391	729122	6529452	373.8	1	25.2	85.6	0.044	2120	0.83	8.49	0.12	381	-0.001
XR01392	729188	6529494	374.8	1.5	27.1	80.8	0.076	3470	1.09	8.47	0.18	523	0.001
XR01393	729246	6529537	373.5	0.5	6.6	61	0.05	1160	1.38	20.9	0.12	489	0.002
XR01394	729315	6529586	368.6	1	5.7	18.8	0.056	1290	0.73	15.3	0.07	125	0.002
XR01395	729257	6529669	369.6	0.5	8.7	61.9	0.085	526	2.04	23.2	0.2	159	0.002
XR01396	729191	6529612	368.3	1	8.5	62	0.061	824	1.39	32.6	0.13	288	0.003
XR01397	729124	6529572	372.5	1	13.5	101.1	0.106	2200	1.46	14.6	0.25	1130	0.002
XR01398	729062	6529525	373.2	0.5	11.9	127.8	0.111	2310	1.91	17.8	0.25	495	0.002
XR01399	728997	6529476	366.7	1.5	22.9	18.7	0.107	3220	1.1	9.71	0.16	1030	0.001
XR01402	728931	6529430	362.2	0.5	6	6	0.2	1820	2.61	19.6	0.34	347	-0.001
XR01403	728869	6529383	366	0.5	8.1	32.8	0.326	2230	3.53	41	0.45	300	0.002
XR01404	728803	6529347	363.2	0.5	10.3	41.8	0.356	1580	4.25	36.4	0.43	263	0.003
XR01405	728743	6529425	359.4	1	9.4	86.7	0.28	1450	4.64	41.9	0.22	497	0.002
XR01406	728806	6529469	363.9	0.5	5.8	35.7	0.281	1270	4.02	36	0.24	259	0.002
XR01407	728871	6529513	361.4	0.5	7.9	5.4	0.222	2360	2.26	22.5	0.23	297	0.002
XR01408	728940	6529567	363	1	15.2	46.1	0.11	1810	1.58	18.9	0.17	486	0.001
XR01409	729002	6529613	363.1	1.5	10.9	301.5	0.124	1240	2.44	25.3	0.21	692	0.003
XR01410	729065	6529655	366.8	1.5	7.3	105.1	0.09	1150	2.11	24.6	0.21	423	0.004
XR01411	728872	6529636	357.4	1.5	10.5	71.6	0.176	1320	2.63	31.2	0.2	438	0.002
XR01412	728809	6529600	360.5	1	7.9	24.6	0.161	1160	2.54	23.1	0.43	301	0.001
XR01413	728750	6529544	361.4	1	7.1	15	0.1	696	1.93	23.1	0.36	162	0.006
XR01414	728689	6529506	361.7	1	8	34.2	0.16	1130	3.07	30.2	0.24	241	0.004



# ASX ANNOUNCEMENT

24 September 2024

For personal use only

Hole_ID	Easting	Northing	RL	Depth	As	Au (ppb)	Bi	Cr	Cs	Li	Nb	Ni	Ta
XR01415	728624	6529582	359.4	1	12.2	20.5	0.508	914	5.58	41	0.23	287	0.005
XR01416	728693	6529622	363.5	1	8.3	35.3	0.167	877	2.99	29.1	0.51	254	0.002
XR01417	729200	6529758	363.4	1	13.2	22.5	0.123	1070	2.03	24.9	0.21	245	0.003
XR01418	729140	6529712	366.2	1.5	7.8	38.8	0.164	784	3.36	29.1	0.12	267	0.003
XR01419	729003	6529744	360.4	1	11.7	310.6	0.097	833	0.94	25.1	0.2	126	-0.001
XR01420	729078	6529792	366.4	0.5	7.5	103.3	0.157	500	2.49	29.2	0.25	167	0.002
XR01421	729135	6529837	366.4	1.5	3	27.4	0.044	768	0.79	9.77	0.15	156	0.002
XR01422	728951	6529820	366.6	0.5	8.1	385.6	0.296	610	2.84	32.1	0.44	119	0.002
XR01423	728877	6529772	367	1	6.6	56.4	0.095	418	1.68	13.1	0.26	485	0.003
XR01424	728820	6529721	358.2	0.5	10.1	31.5	0.174	1220	2.84	36	0.56	460	0.004
XR01425	728759	6529680	360.6	1	10.9	44.8	0.176	1020	3.7	33.6	0.38	364	0.004
XR01426	728574	6529655	358.5	1	12.5	15.5	0.584	968	6.01	44.7	0.74	279	0.004
XR01427	728498	6529616	356.7	1	14	23.5	0.392	933	5.53	41	0.4	229	0.005
XR01428	728432	6529566	359.7	1	12.2	19.4	0.18	555	3.3	32.6	0.45	191	0.003
XR01429	728375	6529522	360.6	1	8.2	13.2	0.117	1000	2.95	29.2	0.36	285	0.002
XR01430	728308	6529472	362.6	1.5	8.9	8.6	0.124	960	2.3	25.4	0.54	367	0.003
XR01431	728245	6529428	362.3	0.5	10.7	11.6	0.188	1220	5.68	49.5	1.12	522	0.005
XR01432	728186	6529386	365.7	1.5	10.4	14	0.165	1850	4.36	51.6	0.86	508	0.004
XR01433	728112	6529333	366	1.5	10.5	12.9	0.19	882	3.52	37.7	0.59	175	0.006
XR01434	728047	6529302	366.1	1.5	6.1	10.2	0.114	437	2.51	28.9	0.25	113	0.005
XR01435	727992	6529372	366.4	1.5	10.7	12.8	0.167	616	4.53	39.9	0.42	160	0.007
XR01436	728057	6529417	367	1	11.8	10	0.155	967	2.78	37.2	0.84	167	0.004
XR01437	728131	6529466	365	1.5	8.5	8.8	0.122	586	2.67	31.8	0.44	190	0.004
XR01438	728189	6529494	366.4	1	7.9	15.2	0.102	484	2.04	24.2	0.52	190	0.002
XR01439	728986	6529220	363.8	0.5	7.6	14.4	0.205	1410	3.31	18.5	0.19	329	0.002
XR01440	728923	6529176	368.9	1	9.9	24.6	0.216	1520	3.38	28.7	0.36	229	0.002
XR01441	728856	6529265	369.6	0.5	15.7	28.3	0.313	2030	3.55	36.1	0.7	295	0.002
XR01442	728932	6529313	364.8	0.5	6.3	6.4	0.238	1950	2.54	33	0.48	185	0.001
XR01443	728797	6529200	367.9	0.3	13	18.2	0.356	1070	3.84	40	0.57	338	0.005
XR01444	728763	6529171	366.4	0.3	9.9	17.3	0.298	1210	4.26	34.3	0.16	371	0.007
XR01445	728721	6529152	372.2	0.3	11.5	20.8	0.282	1670	4.66	37.1	0.33	452	0.006
XR01446	728693	6529128	371.9	0.3	16.1	20.2	0.28	1970	5.31	58.9	0.68	608	0.004
XR01447	728657	6529111	374.8	0.3	13	26.7	0.272	1760	5.08	50.4	0.66	549	0.005
XR01448	728630	6529086	371.7	0.3	10.4	14.9	0.282	1700	5.63	42.1	0.53	569	0.006
XR01449	728588	6529061	375.9	0.3	13.9	21.6	0.485	2380	7.37	58.4	0.38	672	0.018
XR01452	728556	6529044	369.6	0.3	13.7	25.2	0.426	2180	6.73	56.5	0.65	658	0.011
XR01453	728526	6529017	376	0.3	14.6	13	0.652	2020	7.31	52.2	0.71	549	0.007
XR01454	728495	6528994	382	0.3	11.9	13.1	0.38	2080	7.22	48	0.29	466	0.01
XR01455	728459	6528973	373.7	0.3	13.2	10.2	0.252	2110	5.77	43.3	0.36	344	0.004
XR01456	728426	6528950	377.8	0.3	12.7	15.4	0.22	2260	4.26	40.6	0.45	328	0.007
XR01457	728394	6528928	381.9	0.3	11	15.4	0.224	2310	3.11	35.7	0.58	347	0.002
XR01458	728358	6528904	382.8	0.3	8.9	18.1	0.152	2310	3.02	34.3	0.42	351	0.005
XR01459	728339	6529017	375.5	0.3	10.1	8.7	0.173	1300	3.7	34.3	0.46	235	0.004





# ASX ANNOUNCEMENT

24 September 2024

For personal use only

Hole_ID	Easting	Northing	RL	Depth	As	Au (ppb)	Bi	Cr	Cs	Li	Nb	Ni	Ta
XR01460	728377	6529038	378.3	0.3	10.5	10.9	0.154	882	3.73	34.2	0.41	256	0.004
XR01461	728411	6529057	377.9	0.3	12.5	12.4	0.18	1670	4.24	40	0.55	1040	0.007
XR01462	728445	6529080	378.6	0.3	7.9	15.4	0.209	2140	5.29	53.3	0.87	1360	0.001
XR01463	728476	6529100	371.5	0.3	10.6	27.1	0.233	3450	5.6	51.1	0.45	1300	0.006
XR01464	728510	6529124	370.9	0.3	13.9	17	0.161	2880	3.6	24.1	0.52	680	0.004
XR01465	728543	6529147	373.1	0.3	13.6	30.7	0.128	2200	3.36	30.9	0.45	648	0.003
XR01466	728575	6529169	368.1	0.3	13.4	25.5	0.143	2040	3.06	35.2	0.52	584	0.004
XR01467	728606	6529195	373.4	0.3	15.9	19.5	0.236	2530	5.41	52.5	0.3	706	0.007
XR01468	728640	6529213	368.1	0.3	14	23.9	0.223	1860	4.76	44	0.14	487	0.013
XR01469	728671	6529238	373.3	0.3	15.1	22.1	0.213	1590	3.81	40.6	0.39	447	0.011
XR01470	728707	6529259	367.6	0.3	12	13	0.669	922	5.61	57.9	0.19	257	0.008
XR01471	728743	6529282	368.2	0.3	20.5	28	0.358	1440	4.06	41.6	0.53	437	0.004
XR01472	728644	6529341	363	0.3	13.4	20.1	0.423	1040	4.32	47.4	0.4	342	0.005
XR01473	728621	6529320	366.2	0.3	14.4	17.4	0.41	1390	4.38	54.8	0.36	424	0.002
XR01474	728583	6529295	366.7	0.3	15.5	9.7	0.301	1920	5.23	47.3	0.42	569	0.005
XR01475	728550	6529275	367.5	0.3	17	15.5	0.237	2510	4.71	49.2	0.38	674	0.005
XR01476	728518	6529246	364	0.3	17.2	18.5	0.256	3120	3.58	46.9	0.57	704	0.002
XR01477	728484	6529222	366	0.3	14.5	25.3	0.197	3080	3.73	49.5	0.59	830	0.001
XR01478	728447	6529207	369.8	0.3	11.5	13	0.215	4720	4.04	48.3	0.56	933	-0.001
XR01479	728418	6529185	375	0.3	8.7	12	0.29	3310	3.94	37.4	0.22	1030	-0.001
XR01480	728381	6529158	374.6	0.3	7.9	17	0.273	2730	4.68	45.4	0.74	1490	-0.001
XR01481	728351	6529135	367.1	0.3	6.2	8	0.275	2720	5.52	44.7	0.8	1610	0.003
XR01482	728320	6529115	369.7	0.3	10.4	13.5	0.23	1060	3.93	32.3	1.62	647	0.004
XR01483	728198	6529152	369.3	0.3	8.8	19.2	0.124	720	3.24	30.8	0.39	186	0.004
XR01484	728231	6529180	368.9	0.3	10.2	12.9	0.147	715	3.92	32.3	0.62	189	0.006
XR01485	728263	6529203	374.4	0.3	8.7	15.7	0.162	612	4.61	29	1.67	252	0.008
XR01486	728296	6529228	364.6	0.3	10.5	16.7	0.146	1160	4.34	39.8	0.73	865	0.007
XR01487	728332	6529245	363.9	0.3	7.6	7.6	0.26	2380	5.46	38.7	0.31	1260	0.004
XR01488	728359	6529268	367.2	0.3	10.9	16.9	0.377	3420	5.9	59.7	1.07	733	0.006
XR01489	728401	6529292	367.9	0.3	10.4	31.7	0.263	2920	6.57	47.4	0.41	824	0.003
XR01490	728432	6529317	360.7	0.3	11.5	28.3	0.219	2910	5.55	42.2	0.37	710	0.002
XR01491	728466	6529335	364.4	0.3	10.8	14.8	0.176	2570	3.38	30.5	0.51	490	0.004
XR01492	728499	6529355	366.3	0.3	16.6	20.9	0.182	2950	4.07	40.3	0.64	592	0.003
XR01493	728528	6529370	365.9	0.3	13.5	14.6	0.306	2460	3.89	45.8	0.72	585	0.001
XR01494	728374	6529393	366.7	0.3	12.7	18.5	0.152	1490	3.92	40.1	0.56	586	0.005
XR01495	728339	6529369	364	0.3	10.4	15.3	0.185	1680	4.13	39.8	0.61	616	0.003
XR01496	728303	6529354	365.2	0.3	11.3	8.3	0.294	2260	6.09	41.2	0.66	900	0.004
XR01497	728273	6529331	366.7	0.3	10.1	14	0.266	1690	6.43	37.3	0.91	888	0.006
XR01498	728235	6529307	368.8	0.3	9.5	13.3	0.173	675	6.03	42.4	2.19	339	0.01
XR01499	728204	6529279	367.9	0.3	9.8	16.5	0.143	587	4.15	37.4	0.66	255	0.005
XR01502	728173	6529263	371.5	0.3	10.8	16.6	0.151	723	3.43	39.7	0.65	171	0.013
XR01503	728144	6529237	369.4	0.3	10.3	16.2	0.157	721	3.6	32.2	0.48	171	0.006
XR01504	728686	6529365	369.2	0.3	13.3	18.3	0.442	1170	4.42	35.5	0.63	334	0.004



# ASX ANNOUNCEMENT

24 September 2024

For personal use only

Hole_ID	Easting	Northing	RL	Depth	As	Au (ppb)	Bi	Cr	Cs	Li	Nb	Ni	Ta
XR01505	728627	6529444	365	0.3	12.7	20.9	0.483	1050	5.44	45	0.46	312	0.003
XR01506	728592	6529422	365.5	0.3	12.7	17.7	0.472	993	6.09	44.3	0.27	316	0.003
XR01507	728558	6529404	365.5	0.3	12.2	22.9	0.339	1310	4.91	40.1	0.4	363	0.009
XR01508	728401	6529418	365.7	0.3	13.7	11.9	0.309	1800	4.75	53.1	0.78	727	0.002
XR01509	728439	6529439	364.6	0.3	17.2	20.4	0.232	2230	3.74	46.3	0.91	624	0.001
XR01510	728474	6529460	368.3	0.3	15.8	28.9	0.224	1540	5.02	44.2	0.71	510	0.004
XR01511	728507	6529483	363.6	0.3	12.6	23.5	0.368	1180	6.57	51.8	0.43	433	0.006
XR01512	728539	6529507	364.5	0.3	12	19.1	0.414	965	5.55	46	0.37	335	0.005
XR01513	728571	6529522	367.5	0.3	11.5	18.6	0.476	920	5.17	44.8	0.43	335	0.005
XR01514	729179	6528558	370.6	0.3	10.5	19.5	0.306	591	4.47	41.8	0.33	201	0.003
XR01515	729136	6528528	366.8	0.3	11.8	21.3	0.216	562	3.2	36.4	0.54	217	0.005
XR01516	729106	6528505	366.5	0.3	12.2	20.7	0.237	711	3.04	43.2	0.6	281	0.014
XR01517	729074	6528480	367.3	0.3	14.5	41.7	0.204	826	2.94	35.2	0.52	338	0.005
XR01518	729042	6528460	368	0.3	15.6	36.7	0.26	1070	3.53	39	0.48	478	0.008
XR01519	729009	6528434	372.9	0.3	14.9	58.8	0.164	870	2.67	30.1	0.36	363	0.01
XR01520	728978	6528407	371	0.3	16.8	26.7	0.31	1780	4.4	34.1	0.5	444	0.006
XR01521	728951	6528382	373.9	0.3	13.9	50.2	0.172	982	2.88	26	0.45	355	0.003
XR01522	728891	6528459	369.4	0.3	21.3	63.9	0.268	1320	3.18	36.2	0.49	773	0.005
XR01523	728922	6528484	370.3	0.3	22.1	28.9	0.285	1810	3.57	37.5	0.58	635	0.002
XR01524	728960	6528511	368.3	0.3	18.9	36.3	0.25	1440	3.63	46.2	0.44	670	0.005
XR01525	728989	6528540	373.2	0.3	17	55.7	0.157	1020	2.38	32.7	0.4	481	0.005
XR01526	729018	6528561	365.7	0.3	18.7	27.1	0.294	1440	3.66	43.6	0.49	677	0.012
XR01527	729047	6528589	366.3	0.3	16.4	33.6	0.223	1010	3.64	35.9	0.38	409	0.005
XR01528	729081	6528612	366	0.3	15.4	36	0.222	797	3.45	31.4	0.58	307	0.007
XR01529	729110	6528632	365.9	0.3	13.2	20.9	0.346	860	4.02	44.1	0.39	305	0.004
XR01530	729053	6528713	364.3	0.3	15.6	45.8	0.393	1170	3.97	46	0.35	518	0.002
XR01531	729017	6528688	365.4	0.3	19.6	104.4	0.16	857	2.34	32.1	0.38	463	0.005
XR01532	728985	6528665	376	0.3	19	75.5	0.282	1740	3.87	37.3	0.44	576	0.004
XR01533	728954	6528639	368.4	0.3	20.6	52.9	0.259	1550	3.6	39.7	0.45	962	0.01
XR01534	728925	6528613	368.8	0.3	20.1	72	0.232	1480	3.47	36	0.46	940	0.006
XR01535	728894	6528585	370.6	0.3	18.4	64.4	0.17	1310	3.02	37.4	0.42	707	0.004
XR01536	728857	6528567	368.7	0.3	17.7	58	0.161	1430	3.23	26.5	0.34	640	0.006
XR01537	728827	6528545	369	0.3	16	73.6	0.14	1380	2.79	28.4	0.36	559	0.003
XR01538	728768	6528620	365.4	0.3	10.3	28	0.187	1600	4.08	27.9	0.43	530	0.009
XR01539	728800	6528649	371.6	0.3	18.1	49.6	0.189	1620	4.45	30.1	0.4	657	0.006
XR01540	728835	6528674	371	0.3	15.9	39.3	0.214	1650	4.29	40.6	0.39	679	0.004
XR01541	728862	6528695	368.8	0.3	15.8	44.1	0.186	1500	3.51	33.9	0.4	661	0.004
XR01542	728893	6528724	368.9	0.3	16.3	35.8	0.246	1640	3.63	36.6	0.38	767	0.006
XR01543	728925	6528745	365	0.3	17.5	48.8	0.219	1340	2.93	39.1	0.42	673	0.006
XR01544	728962	6528770	366.9	0.3	14.9	36.2	0.278	1190	3.07	34.8	0.34	538	0.006
XR01545	728992	6528796	366.4	0.3	16.2	33.8	0.235	885	2.85	28.5	0.38	433	0.009
XR01546	728933	6528866	363.6	0.3	16.8	20.3	0.186	805	2.24	25.1	0.62	353	0.004
XR01547	728896	6528845	366.7	0.3	14.3	22.1	0.246	1120	3.29	34.8	0.44	510	0.005





# ASX ANNOUNCEMENT

24 September 2024

For personal use only

Hole_ID	Easting	Northing	RL	Depth	As	Au (ppb)	Bi	Cr	Cs	Li	Nb	Ni	Ta
XR01548	728864	6528826	367.1	0.3	11.9	35.1	0.166	951	2.88	34.3	0.58	450	0.004
XR01549	728834	6528800	368.5	0.3	9.1	37.4	0.133	827	2.69	28.4	0.57	315	0.005
XR01552	728801	6528774	366.5	0.3	13.4	15.8	0.214	1270	3.81	31.6	0.91	510	0.004
XR01553	728770	6528747	365.9	0.3	9.7	7	0.227	1170	3.84	30.2	0.52	444	0.002
XR01554	728737	6528725	367.2	0.3	9.1	9.3	0.201	1560	3.18	25.8	0.43	454	0.002
XR01555	728707	6528703	369.7	0.3	8.3	6.8	0.198	1760	3.02	21.2	0.35	379	0.002
XR01556	729070	6529924	363.4	1	5.4	29.8	0.062	743	1.05	11.9	0.09	135	0.002
XR01557	729004	6529886	368.7	1.5	8.6	69	0.062	513	1.05	11.2	0.21	121	0.006
XR01558	729021	6529988	370.3	1.5	7.9	38.1	0.037	428	0.71	9	0.23	113	-0.001
XR01559	728955	6529948	370.7	1	4.5	114.5	0.074	445	1.26	20.2	0.31	127	0.002
XR01560	728891	6529897	371.4	0.5	14.8	129.6	0.394	662	3.89	56.7	0.76	227	0.01
XR01561	728828	6529854	371.8	1.5	6.3	85.7	0.043	475	1	12.5	0.18	114	0.002
XR01562	728758	6529798	367.4	0.5	8.4	73.6	0.248	1080	4.06	53.2	0.33	333	0.007
XR01563	728694	6529764	365.3	1	8.9	38.7	0.153	603	4.13	37.9	0.27	329	0.012
XR01564	728632	6529728	363	1	12.2	30.1	0.223	986	3.92	40	0.35	357	0.005
XR01565	728957	6530072	367	0.5	7.8	36.7	0.112	692	1.93	20.9	0.12	205	0.006
XR01566	728891	6530027	370	1.5	6	79.1	0.112	472	1.61	32.3	0.24	171	0.004
XR01567	728829	6529982	367.3	0.5	4.2	969.5	0.136	668	1.53	32	0.34	133	0.002
XR01568	728767	6529931	364.8	1	7.4	92.4	0.151	793	2.48	29.3	0.33	372	0.009
XR01569	728702	6529886	359.4	1	6.9	245	0.099	973	2.39	16.4	0.32	268	0.01
XR01570	728632	6529836	356.1	1.5	6.8	30	0.122	430	1.7	23.8	0.31	120	0.004
XR01571	728572	6529792	359.8	1	11	35.8	0.306	705	3.74	48.7	0.28	254	0.002
XR01572	728505	6529746	360.2	1.5	13.5	18.5	0.366	833	3.57	33.2	0.26	219	0.004
XR01573	728440	6529695	367.3	1	8.2	27.4	0.271	529	1.84	23	0.4	155	0.002
XR01574	728376	6529653	366.1	1.5	9.4	16.2	0.156	346	1.69	17.4	0.45	128	0.003
XR01575	728314	6529606	365.2	1.5	7.3	13.8	0.079	467	1.59	20.2	0.43	176	0.002
XR01576	728241	6529572	365.9	1.5	8.1	9.4	0.083	517	2.02	26.3	0.47	184	0.003
XR01577	727930	6529452	364.1	1	13.1	20.5	0.186	561	4.1	49.9	0.41	217	0.005
XR01578	728001	6529497	362.7	1.5	9.4	12.8	0.149	346	2.31	21	0.35	118	0.002
XR01579	728063	6529547	364.8	1.5	9.4	11.3	0.115	287	1.95	20.3	0.38	130	0.003
XR01580	728131	6529590	360	1.5	10.7	22.8	0.121	435	3.04	27.2	0.23	169	0.002
XR01581	728192	6529640	362.8	1.5	12	19.1	0.152	561	4.14	33.4	0.21	200	0.002
XR01582	728261	6529682	359.3	1.5	10	13.4	0.15	601	3.8	31.2	0.26	214	0.009
XR01583	728324	6529734	359.4	1	9.4	20.6	0.257	723	3.65	34.9	0.26	202	0.003
XR01584	728391	6529781	360.8	1.5	9.9	37.5	0.263	628	3	27	0.16	160	0.006
XR01585	728451	6529819	359.6	1.5	13	33.3	0.424	1080	4.99	43.9	0.19	270	0.003
XR01586	728520	6529875	364.3	1	11.3	30.9	0.41	944	4.93	36.3	0.16	272	0.006
XR01587	728575	6529918	358.2	1.5	8	99.5	0.152	724	2.21	33.8	0.3	153	0.002
XR01588	728648	6529966	363.6	1.5	10.2	280.2	0.126	1520	3.71	37.9	0.19	372	0.002
XR01589	728710	6530011	362.6	1.5	8.4	215.4	0.094	698	2.79	27	0.22	196	0.005
XR01590	728775	6530059	365.1	1.5	7.6	212.5	0.079	475	0.98	22.5	0.26	127	0.002
XR01591	728841	6530113	362.9	1.5	13.4	99.4	0.059	382	1.01	29.9	0.16	81.4	0.002
XR01592	728904	6530156	367.1	1.5	6.4	47.3	0.083	577	1.32	14.6	0.16	130	0.002



# ASX ANNOUNCEMENT

24 September 2024

For personal use only

Hole_ID	Easting	Northing	RL	Depth	As	Au (ppb)	Bi	Cr	Cs	Li	Nb	Ni	Ta
XR01593	728842	6530231	355.2	1.5	6.1	30.6	0.088	590	1.27	13.6	0.07	174	0.002
XR01594	728772	6530188	362.6	1.5	6.9	87	0.071	458	1.41	24.4	0.18	104	0.002
XR01595	728709	6530142	365	1.5	7.8	111.8	0.103	534	1.98	26.8	0.13	172	0.004
XR01596	728650	6530091	361.8	1.5	7.2	131	0.114	484	2.39	17.5	0.12	172	0.004
XR01597	728584	6530043	361.1	1.5	6.6	85.7	0.084	688	1.92	14.3	0.17	214	0.003
XR01598	728520	6530003	363.7	1.5	9.9	58.4	0.209	872	4.85	54.9	0.17	224	0.005
XR01599	728449	6529948	364.7	1.5	12.5	29.6	0.445	997	5.44	55.5	0.21	240	0.013
XR01602	728394	6529906	364	1.5	12.8	31	0.494	1020	6.57	58.5	0.3	280	0.003
XR01603	728326	6529858	363.5	1.5	9.3	29.5	0.238	507	3.34	28.8	0.21	127	0.006
XR01604	728262	6529810	361.8	1	9	20.7	0.288	758	5.16	48.8	0.19	212	0.009
XR01605	728197	6529767	362.8	1.5	12.8	22	0.145	467	3.96	33	0.24	166	0.011
XR01606	728131	6529720	360.8	1.5	11.4	22.4	0.109	304	3.04	22.9	0.14	120	0.003
XR01607	728064	6529673	364.2	1.5	9.7	20.9	0.102	318	2.96	25.4	0.25	102	0.002
XR01608	728004	6529625	365.2	1.5	13.4	19.3	0.117	413	4.01	31.9	0.22	145	0.003
XR01609	727942	6529578	362	1	15	19.5	0.183	580	5.67	52	0.25	218	0.006
XR01610	727876	6529532	365.2	1.5	16	40.9	0.161	477	4.27	47.5	0.18	179	0.003
XR01611	727815	6529612	365	1	29.8	57.7	0.211	673	6.39	58.4	0.3	215	0.006
XR01612	727885	6529661	362.3	1	17.2	49.5	0.139	445	5.22	40.8	0.28	157	0.003
XR01613	727948	6529705	360.8	1.5	21.5	47.6	0.119	436	4.6	35.8	0.24	126	0.003
XR01614	728013	6529753	361.7	1.5	14.8	21.6	0.083	263	2.78	22.1	0.3	91.4	0.002
XR01615	728082	6529803	362.1	1	10.3	24.2	0.116	275	2.7	25.6	0.24	108	0.004
XR01616	728140	6529846	358.3	1.5	10.4	24.4	0.138	333	3.48	32	0.18	140	0.003
XR01617	728206	6529896	361.4	1	10	13.4	0.326	626	5.37	50	0.26	240	0.006
XR01618	728271	6529942	359.9	1.5	10.3	24	0.279	488	4.18	32.6	0.2	169	0.004
XR01619	728330	6529986	358.5	0.5	10	17.2	0.482	765	4.86	41.2	0.32	268	0.005
XR01620	728398	6530039	357.2	0.5	10	16.7	0.451	701	3.83	39.6	0.28	201	0.006
XR01621	728463	6530082	358.3	1	9.2	21.5	0.348	589	4.24	37.7	0.22	186	0.005
XR01622	728526	6530126	357.9	1.5	9.3	94.7	0.108	362	2.7	25	0.21	131	0.003
XR01623	728589	6530174	355.7	1.5	13.8	151.5	0.187	548	4.74	41	0.21	295	0.006
XR01624	728657	6530223	357.8	1.5	9.4	87	0.126	403	1.86	26.7	0.2	152	0.008
XR01625	728725	6530270	358.5	1.5	6.7	85.4	0.131	565	2.02	29.7	0.11	189	0.003
XR01626	728784	6530317	358.5	1	6.3	26.1	0.085	459	1.25	14.8	0.2	173	0.003
XR01627	728724	6530396	354.4	1.5	6.1	23.3	0.074	385	0.95	13.4	0.21	143	0.003
XR01628	728656	6530348	354.7	1.5	6.2	55.9	0.084	439	0.98	17.9	0.32	139	0.002
XR01629	728589	6530302	359.2	1.5	10.5	44.3	0.151	479	1.7	28.4	0.47	178	0.002
XR01630	728529	6530250	353.9	1.5	10.2	73.4	0.161	501	3.22	40.2	0.26	212	0.005
XR01631	728468	6530206	357.7	1.5	8.9	30	0.261	554	4.21	41.1	0.21	214	0.005
XR01632	728399	6530159	353.5	1	10.5	22	0.412	691	4.48	43.7	0.26	206	0.007
XR01633	728341	6530113	355.1	1	11	21.2	0.409	653	4.73	44.7	0.24	204	0.008
XR01634	728281	6530067	365.2	1	10.4	18.2	0.36	603	4.21	40.9	0.17	210	0.004
XR01635	728210	6530019	362	1	10.4	15.5	0.448	742	4.9	42.2	0.22	242	0.006
XR01636	728144	6529971	360.3	1	10.6	13.8	0.31	627	5.36	50.1	0.26	252	0.009
XR01637	728079	6529922	363	1	11.9	28	0.122	313	3.57	33	0.21	119	0.002



# ASX ANNOUNCEMENT

24 September 2024

For personal use only

Hole_ID	Easting	Northing	RL	Depth	As	Au (ppb)	Bi	Cr	Cs	Li	Nb	Ni	Ta
XR01638	728008	6529876	356.6	1.5	17.7	37.2	0.163	407	4.83	43.3	0.24	155	0.006
XR01639	727946	6529826	357.3	1.5	28.2	96.4	0.163	499	5.7	42.2	0.18	170	0.005
XR01640	727883	6529782	360.2	1	19.3	39.3	0.122	542	3.66	26.1	0.23	125	0.004
XR01641	727819	6529732	356.5	1	31.5	76.3	0.134	365	4.47	33.8	0.22	152	0.003
XR01642	727755	6529687	364.6	1.5	36	69.5	0.093	276	3.67	19.4	0.19	106	0.002
XR01643	727709	6529779	358	1.5	21.5	25.3	0.066	154	3.92	16.2	0.15	94.3	0.003
XR01644	727773	6529821	358	1.5	50.9	55.6	0.105	264	3.92	22.8	0.12	118	0.002
XR01645	727830	6529871	356.3	1.5	39.2	81.3	0.162	285	4.03	29.9	0.19	119	0.005
XR01646	727897	6529919	354.3	1.5	26.6	52.1	0.114	303	3.57	24.5	0.22	108	0.002
XR01647	727954	6529965	357.1	1.5	19.8	57.8	0.122	357	3.52	28.5	0.25	123	0.004
XR01648	728025	6530015	355	1	21.1	48.2	0.167	521	4.66	44.6	0.23	174	0.002
XR01649	728091	6530063	355.2	1.5	10.9	22	0.202	520	4.47	43.6	0.19	170	0.003
XR01652	728150	6530104	352.5	1	9.9	20.4	0.439	778	4.5	43.8	0.38	230	0.004
XR01653	728217	6530151	352.9	1.5	9.4	21.3	0.319	587	3.56	31.9	0.31	181	0.003
XR01654	728286	6530202	353.1	1	10.8	22.5	0.408	720	4.83	48.2	0.29	221	0.003
XR01655	728350	6530251	357.4	1	11.2	18.4	0.47	823	5.45	45.3	0.29	241	0.003
XR01656	728413	6530294	356	1	7.2	11.5	0.309	613	2.86	30.6	0.18	176	0.003
XR01657	728481	6530343	356.1	1.5	13.6	63.4	0.15	645	2.07	42.9	0.19	201	0.002
XR01658	728539	6530389	356	1	7.8	33.8	0.092	487	1.3	27.6	0.25	165	0.002
XR01659	728609	6530440	356.9	1.5	9.1	41.5	0.165	840	2.19	34.1	0.26	312	0.002
XR01660	728674	6530486	362.7	1.5	8.2	39	0.111	675	1.4	28.1	0.25	270	0.002
XR01661	728609	6530564	358.4	1.5	9.5	41.2	0.1	564	1.51	23.2	0.19	212	0.001
XR01662	728546	6530518	358.5	1	11.1	39	0.193	1210	2.48	49.5	0.3	330	0.003
XR01663	728485	6530471	353.9	1.5	8.7	64.2	0.125	501	1.6	35.9	0.17	198	0.002
XR01664	728419	6530421	358.2	1.5	8.9	47	0.186	599	2.54	45	0.16	222	0.002
XR01665	728355	6530379	358	1	10.2	18	0.387	800	4.07	46.5	0.3	239	0.007
XR01666	728290	6530331	358.5	1	13.7	21.7	0.483	947	3.44	37	0.23	243	0.004
XR01667	728224	6530278	359.3	1.5	9.2	22.3	0.418	618	5.2	39.9	0.28	196	0.004
XR01668	728162	6530235	356.6	1	8.9	16.2	0.353	576	3.68	33	0.24	184	0.004
XR01669	728101	6530186	355.6	1	11.3	22.8	0.442	722	5.25	48.2	0.29	248	0.005
XR01670	728033	6530140	356.5	1	16.4	28.2	0.227	544	5.63	52.3	0.25	191	0.004
XR01671	727964	6530093	359.5	1	18.2	39.1	0.195	548	5.23	42.2	0.23	228	0.004
XR01672	727900	6530041	360.7	1	24.9	36.7	0.218	577	7.66	48.3	0.28	241	0.003
XR01673	727831	6529994	360.7	1.5	30.5	60.9	0.119	313	4.03	31	0.2	114	0.002
XR01674	727776	6529951	364	1.5	28.9	81.1	0.116	248	3.52	33.8	0.26	102	0.002
XR01675	727705	6529897	362.3	0.5	13.9	62	0.27	362	7.25	47.9	0.53	154	0.005
XR01676	727649	6529856	363.1	1.5	32.7	20	0.231	195	5.92	31.4	0.4	119	0.003
XR01677	727580	6529938	365.4	0.5	19.2	11.6	0.087	127	2.91	24	0.42	69	0.002
XR01678	727653	6529985	356.6	1	21.4	17.4	0.138	168	2.91	24.1	0.27	71.5	0.003
XR01679	727718	6530033	359.7	1.5	13.7	41.8	0.095	209	2.62	24.8	0.36	78	0.003
XR01680	727786	6530083	360.3	1.5	18.8	17.9	0.198	337	6.12	43.8	0.15	126	0.003
XR01681	727850	6530129	362.8	1.5	18	26.2	0.213	390	6.81	45	0.17	146	0.004
XR01682	727916	6530169	359.9	1	18.2	28.7	0.236	510	5.43	28.2	0.18	196	0.004





## ASX ANNOUNCEMENT

24 September 2024

Hole_ID	Easting	Northing	RL	Depth	As	Au (ppb)	Bi	Cr	Cs	Li	Nb	Ni	Ta
XR01683	727979	6530221	361.1	1	22.5	26.9	0.293	565	6.97	48.9	0.27	200	0.003
XR01684	728043	6530280	359.5	1	10.2	24.9	0.472	790	5.12	38.6	0.17	228	0.004
XR01685	728105	6530315	361.4	1.5	11.1	28.1	0.388	633	3.97	32.6	0.25	177	0.003
XR01686	728168	6530367	358.3	1	9.1	16.6	0.318	667	3.06	32.2	0.24	176	0.003
XR01687	728236	6530403	356.8	1.5	9.7	30.9	0.305	700	3.09	32.4	0.27	197	0.006
XR01688	728295	6530450	355.5	1	8.3	18.4	0.257	614	2.33	19.7	0.28	156	0.003
XR01689	728361	6530503	358.7	1.5	8.4	24.1	0.371	681	2.91	29.1	0.19	185	0.007
XR01690	728429	6530552	355.5	1.5	8.8	41.6	0.115	458	1.42	26.7	0.24	159	0.003
XR01691	728492	6530599	357.2	1.5	6.8	43.4	0.165	641	1.87	33.1	0.19	223	0.006
XR01692	728560	6530641	360.3	1.5	9.2	57.4	0.12	462	1.65	20.7	0.26	179	0.002
XR01693	728941	6529697	366.3	1.5	9.4	148.5	0.104	469	1.88	20	0.24	348	0.003

*Coordinates in GDA 94 / MGA Zone 50, results in ppm unless otherwise stated.*

For personal use only



## ASX ANNOUNCEMENT

24 September 2024

### Competent Persons Statement

The Exploration Results reported in this announcement are based on, and fairly represent, information and supporting documentation prepared by Mr Brodie Box, MAIG. Mr Box is a geologist and has adequate professional experience with the exploration and geology of Western Australia to qualify as a Competent Person as defined in the 2012 Edition of the Joint Ore Reserves Committee (JORC) Australasian Code for Reporting of Exploration Results, Mineral Resources and Ore Reserves. Mr Box consents to the form and context in which the Exploration Results are presented in this announcement.

#  
This announcement has been approved for release by:

John Featherby

Chairman

XTC Lithium Limited

Email: [info@xantippe.com.au](mailto:info@xantippe.com.au)

[www.xantippe.com.au](http://www.xantippe.com.au)

Derxw#kh#rxwkhuj#Furvw#Urog#Burnfw#

The Southern Cross Project is located 380km east of Perth, southeast of Southern Cross in the Yilgarn Goldfield.

The project comprises 16 Prospecting Licences and 7 Exploration Licences with a combined area of 197 km<sup>2</sup>, over mostly contiguous tenements covering over 40km of strike of the Southern Cross Greenstone Belt, which has historically produced around 15Moz gold, predominantly from the Marvel Loch and Southern Cross centres, both of which are in operation to varying extents.

The project area is serviced by sealed roads, grid power, scheme water, rail and town amenities. Minjar operates the Marvel Loch plant nearby and Ramelius Resources operates the Edna May facility some 60 kilometres to the west.



# ASX ANNOUNCEMENT

24 September 2024

JORC Code, 2012 Edition: Table 1

## Section 1: Sampling Techniques and Data

For personal use only

Criteria	JORC – Code of Explanation	Commentary
Sampling techniques	<p><i>Nature and quality of sampling (e.g. cut channels, random chips, or specific specialised industry standard measurement tools appropriate to the minerals under investigation, such as down hole gamma sondes, or handheld XRF instruments, etc.). These examples should not be taken as limiting the broad meaning of sampling.</i></p> <p><i>Include reference to measures taken to ensure sample representivity and the appropriate calibration of any measurement tools or systems used.</i></p> <p><i>Aspects of the determination of mineralisation that are material to the Public Report. In cases where ‘industry standard’ work has been done this would be relatively simple (e.g. ‘reverse circulation drilling was used to obtain 1 m samples from which 3 kg was pulverised to produce a 30 g charge for fire assay’).</i></p> <p><i>In other cases more explanation may be required, such as where there is coarse gold that has inherent sampling problems. Unusual commodities or mineralisation types (e.g. submarine nodules) may warrant disclosure of detailed information.</i></p>	<ul style="list-style-type: none"> <li>• A total of 477 auger holes were drilled for 547m with samples taken by 3.5” open flight auger.</li> <li>• Interface samples from 0.5m-1.5m below surface targeting the saprolite layer.</li> <li>• One &lt;1kg sample was produced by scoop sampling the drilled material at each drill site.</li> <li>• 113 infill soil samples were taken from approximately 30cm depth to align with a previous survey.</li> <li>• Soil samples were sieved to 2mm and ~300g samples.</li> </ul> <ul style="list-style-type: none"> <li>• Samples were sent to Labwest Laboratory in Perth for UltraFines analysis. Samples are reduced to 40g which is separated in water to get a 2micron fraction for analysis via aqua regia microwave digest.</li> </ul>
Drilling techniques	<p><i>Drill type (e.g. core, reverse circulation, open-hole hammer, rotary air blast, auger, Bangka, sonic, etc) and details (eg core diameter, triple or standard tube, depth of diamond tails, face-sampling bit or other type, whether core is oriented and if so, by what method, etc).</i></p>	<ul style="list-style-type: none"> <li>• A Landcruiser mounted auger rig was utilised for drilling 3.5” diameter holes.</li> <li>• Drilling was generally from 1 to 1.5m depth, with some shallow 0.5m samples in hard ground.</li> </ul>





## ASX ANNOUNCEMENT

24 September 2024

Drill sample recovery	<i>Method of recording and assessing core and chip sample recoveries and results assessed.</i>	<ul style="list-style-type: none"> <li>Each drill site had sample depth, colour and HCl reaction details recorded on site by the auger rig operating staff.</li> </ul>
	<i>Measures taken to maximise sample recovery and ensure representative nature of the samples.</i>	<ul style="list-style-type: none"> <li>Auger Interface samples were taken from 1m depth to represent material below transported cover.</li> <li>Soil samples were taken from 0.3m depth and sieved to 2mm .</li> <li>Regolith sampling may inadvertently collect transported material as opposed to in-situ creating false anomalies. Ultrafines analysis may minimise this risk by sampling clay portion only.</li> </ul>
	<i>Whether a relationship exists between sample recovery and grade and whether sample bias may have occurred due to preferential loss/gain of fine/coarse material.</i>	<ul style="list-style-type: none"> <li>No bias known</li> </ul>
Logging	<i>Whether core and chip samples have been geologically and geotechnically logged to a level of detail to support appropriate Mineral Resource estimation, mining studies and metallurgical studies.</i>	<ul style="list-style-type: none"> <li>Logging recorded the gps location of the hole, depth of samples and basic geological information deemed adequate for auger drilling.</li> </ul>
	<i>Whether logging is qualitative or quantitative in nature. Core (or costean, channel, etc) photography.</i>	<ul style="list-style-type: none"> <li>Qualitative</li> </ul>
	<i>The total length and percentage of the relevant intersections logged.</i>	<ul style="list-style-type: none"> <li>Each sample site was logged</li> </ul>
Sub-sampling techniques and sample preparation	<i>If core, whether cut or sawn and whether quarter, half or all core taken.</i>	<ul style="list-style-type: none"> <li>N/A</li> </ul>
	<i>If non-core, whether riffled, tube sampled, rotary split, etc and whether sampled wet or dry.</i>	<ul style="list-style-type: none"> <li>All samples were dry</li> </ul>
	<i>For all sample types, the nature, quality and appropriateness of the sample preparation technique.</i>	<ul style="list-style-type: none"> <li>Sample preparation is appropriate to the sample type and is of a standard considered acceptable by the Competent Person</li> </ul>
	<i>Quality control procedures adopted for all sub-sampling stages to maximise representivity of samples.</i>	<ul style="list-style-type: none"> <li>Commercially prepared standard samples were inserted at a rate of one per ~50 samples.</li> </ul>
	<i>Measures taken to ensure that the sampling is representative of the in situ material collected, including for instance results for field duplicate/second-half sampling.</i>	<ul style="list-style-type: none"> <li>One field duplicate sample was taken and submitted each ~50 samples.</li> </ul>

For personal use only



## ASX ANNOUNCEMENT

24 September 2024

	<i>Whether sample sizes are appropriate to the grain size of the material being sampled.</i>	<ul style="list-style-type: none"> <li>Sample sizes are considered appropriate for the sampling technique of an auger program.</li> </ul>
Quality of assay data and laboratory tests	<i>The nature, quality and appropriateness of the assaying and laboratory procedures used and whether the technique is considered partial or total.</i>	<ul style="list-style-type: none"> <li>The laboratory analysis is deemed appropriate for the sampling technique of an auger program.</li> </ul>
	<i>For geophysical tools, spectrometers, handheld XRF instruments, etc, the parameters used in determining the analysis including instrument make and model, reading times, calibrations factors applied and their derivations, etc.</i>	<ul style="list-style-type: none"> <li>N/A</li> </ul>
	<i>Nature of quality control procedures adopted (e.g. standards, blanks, duplicates, external laboratory checks) and whether acceptable levels of accuracy (i.e. lack of bias) and precision have been established.</i>	<ul style="list-style-type: none"> <li>The Competent Person considers that commercially prepared standard samples and the addition of duplicate samples is in sufficient proportion to inform a meaningful analysis of accuracy with results confirming this.</li> </ul>
Verification of sampling and assaying	<i>The verification of significant intersections by either independent or alternative company personnel.</i>	<ul style="list-style-type: none"> <li>N/A</li> </ul>
	<i>The use of twinned holes.</i>	<ul style="list-style-type: none"> <li>N/A</li> </ul>
	<i>Documentation of primary data, data entry procedures, data verification, data storage (physical and electronic) protocols.</i>	<ul style="list-style-type: none"> <li>All data was captured in the field by drill contractors and supplied in digital form to Xantippe which has been added to a database.</li> </ul>
	<i>Discuss any adjustment to assay data.</i>	<ul style="list-style-type: none"> <li>Assays received below detection limit ("X") were designated a numerical value of -0.001 for numerical analysis.</li> </ul>
Location of data points	<i>Accuracy and quality of surveys used to locate drill holes (collar and down-hole surveys), trenches, mine workings and other locations used in Mineral Resource estimation.</i>	<ul style="list-style-type: none"> <li>Hole collars were located with a hand-held GPS and deemed of sufficient accuracy for this program.</li> </ul>
	<i>Specification of the grid system used.</i>	<ul style="list-style-type: none"> <li>All hole collars were located in accordance with the MGA94 grid, Zone 50.</li> </ul>
	<i>Quality and adequacy of topographic control.</i>	<ul style="list-style-type: none"> <li>Elevation recorded from GPS is considered accurate to within ~5-10m, but samples are considered surface samples and controlled by a DTM in mapping software.</li> </ul>
Data spacing and distribution	<i>Data spacing for reporting of Exploration Results.</i>	<ul style="list-style-type: none"> <li>Holes were drilled on a 40 to 80m (EW) by 100m (NS) lines.</li> <li>Infill soil samples are on a 40x100m grid.</li> </ul>

For personal use only



## ASX ANNOUNCEMENT

24 September 2024

	<p><i>Whether the data spacing and distribution is sufficient to establish the degree of geological and grade continuity appropriate for the Mineral Resource and Ore Reserve estimation procedure(s) and classifications applied.</i></p>	<ul style="list-style-type: none"> <li>• Surface sample results would not be used in resource estimation.</li> </ul>
	<p><i>Whether sample compositing has been applied.</i></p>	<ul style="list-style-type: none"> <li>• N/A</li> </ul>
Orientation of data in relation to geological structure	<p><i>Whether the orientation of sampling achieves unbiased sampling of possible structures and the extent to which this is known, considering the deposit type.</i></p>	<ul style="list-style-type: none"> <li>• Grid bias towards NW striking lithologies with greater density across strike as represented in images.</li> </ul>
	<p><i>If the relationship between the drilling orientation and the orientation of key mineralised structures is considered to have introduced a sampling bias, this should be assessed and reported if material.</i></p>	<ul style="list-style-type: none"> <li>• As above</li> </ul>
Sample security	<p><i>The measures taken to ensure sample security.</i></p>	<ul style="list-style-type: none"> <li>• Samples were collected on site under the supervision of the drill contractors and delivered to the laboratory in Perth by a trusted transport company.</li> </ul>
Audits or reviews	<p><i>The results of any audits or reviews of sampling techniques and data.</i></p>	<ul style="list-style-type: none"> <li>• No audit has been undertaken of the preliminary results being reported.</li> </ul>

For personal use only





# ASX ANNOUNCEMENT

24 September 2024

## Section 2: Reporting of Exploration Results

(Criteria listed in the preceding section also apply to this section)

	JORC – Code of Explanation	Commentary
Tenement and land tenure status	<p><i>Type, reference name/number, location and ownership including agreements or material issues with third parties such as joint ventures, partnerships, overriding royalties, native title interests, historical sites, wilderness or national park and environmental settings.</i></p> <p><i>The security of the tenure held at the time of reporting along with any known impediments to obtaining a licence to operate in the area.</i></p>	<p>Tenure is held by XANTIPPE SX PTY LTD.</p> <p>There are no known native title sites over granted tenure. Tenements are within the Marlinyu Ghoorlie claimant group.</p> <p>Tenements are on unallocated crown land. Tenements are granted and reported to be in good standing.</p> <p>Portions of the tenements are within the Parker Range Ecological Community.</p>
Exploration done by other parties	<p><i>Acknowledgement and appraisal of exploration by other parties.</i></p>	<p>The Company has obtained historical exploration records from DMIRS WAMEX database. Most of the historical work was conducted by Sons of Gwalia Ltd (public company) and Stephen Arthur Payne (private individual) and Minjar (private).</p> <p>The Competent Person considers this work to have been undertaken in accordance with industry standards current at the time.</p>
Geology	<p><i>Deposit type, geological setting and style of mineralisation.</i></p>	<p>The mineralisation types include structurally controlled epithermal gold, banded-iron-formation (BIF) hosted gold, pegmatitic tin-tantalum-niobium and porphyry copper-gold mineralisation. The geological setting is Archean greenstones of the Yilgarn Goldfield intruded by Archean granite domes.</p>
Drill hole information	<p><i>A summary of all information material to the understanding of the exploration results including a tabulation of the following information for all Material drill holes:</i></p> <ul style="list-style-type: none"> <li>• <i>easting and northing of the drill hole collar</i></li> <li>• <i>elevation or RL (Reduce Level) – elevation above sea level in metres) of the drill hole collar</i></li> <li>• <i>dip and azimuth of the hole</i></li> <li>• <i>down hole length and interception depth</i></li> <li>• <i>hole length</i></li> </ul>	<p>Preliminary drill hole collar locations are included in the body of this Report. The hole collars have not yet been formally surveyed and the Competent Person considers the preliminary locations to be appropriate for these Exploration Results.</p>

For personal use only



# ASX ANNOUNCEMENT

24 September 2024

For personal use only

	<p><i>If the exclusion of this information is justified on the basis that the information is not Material and this exclusion does not detract from the understanding of the report, the Competent Person should clearly explain why this is the case.</i></p>	
Data aggregation methods	<p><i>In reporting Exploration Results, weighting averaging techniques, maximum and/or minimum grade truncations (eg cutting of high grades) and cut-off grades are usually Material and should be stated.</i></p> <p><i>Where aggregate intercepts incorporate short lengths of high grade results and longer lengths of low grade results, the procedure used for such aggregation should be stated and some typical examples of such aggregations should be shown in detail.</i></p> <p><i>The assumptions used for any reporting of metal equivalent values should be clearly stated.</i></p>	<p>Assay data is reported as received from the laboratory with 1 sample per site. No aggregates or composites necessary. X designates no detection from analysis.</p> <p>No metal equivalent values have been reported.</p>
Relationship between mineralisation widths and intercept lengths	<p><i>These relationships are particularly important in the reporting of Exploration Results.</i></p> <p><i>If the geometry of the mineralisation with respect to the drill hole angle is known, its nature should be reported.</i></p> <p><i>If it is not known and only the down hole lengths are reported, there should be a clear statement to this effect (e.g. 'down hole length, true width not known').</i></p>	<p>Not applicable for surface geochemistry data.</p>
Diagrams	<p><i>Appropriate maps and sections (with scales) and tabulations of intercepts should be included for any significant discovery being reported. These should include, but not be limited to a plan view of drill hole collar locations and appropriate sectional views.</i></p>	<p>Figures in the report present best-available information and is sufficient for this level of analysis.</p>
Balanced reporting	<p><i>Where comprehensive reporting of all Exploration Results is not practicable, representative reporting of both low and high grades and/or widths should be practiced to avoid misleading reporting of Exploration Results.</i></p>	<p>The Competent Person considers that appropriate cautions have been included in this report that alert the reader to the nature of the results. Elements material to this announcement have been reported for practicality.</p>



# ASX ANNOUNCEMENT

24 September 2024

For personal use only

<p>Other substantive exploration data</p>	<p><i>Other exploration data, if meaningful and material, should be reported including (but not limited to): geological observations; geophysical survey results; geochemical survey results; bulk samples – size and method of treatment; metallurgical test results; bulk density, groundwater, geotechnical and rock characteristics; potential deleterious or contaminating substances.</i></p>	<p>All significant results are reported.</p>
<p>Further work</p>	<p><i>The nature and scale of planned further work (e.g. tests for lateral extensions or depth extensions or large-scale step-out drilling).</i></p> <p><i>Diagrams clearly highlighting the areas of possible extensions, including the main geological interpretations and future drilling areas, provided this information is not commercially sensitive.</i></p>	<p>Exploration at the Project is ongoing with continual appraisal of targets over the tenement package to prioritise future work, but new results present here show clear potential for grid infill around high priority targets.</p> <p>The Competent Person advises that geological interpretation is ongoing and subject to change with the most current understandings presented in this report at the time of writing.</p>

**REGISTERED OFFICE**

[WF#Dkckp #Dp lhg#  
 96#lyfoll#wihw#  
 Z ræwrqhfuil#Q VZ #398#  
 SR #Er (#77 #Z hwwShuk/# D#; :5#  
 M: +61 411 403 585  
 E: info@xantippe.com.au

**TR U#F R U#BQ TR UF D#WR Q #BORD#N#FR Q ND PW#B**

M#kq#Ihdwkue | #  
 Fkdllp dq#  
 [WF#Dkckp #Dp lhg#  
 H#MkqIhdwkue | C {dqwsshfrp tix

**ASX: XTC**

**ABN: 56 123 102 974**

**xantippe.com.au**