

19 September 2024

## Drill results extend Dittmer mineralised zone. Duffer lode rock chips deliver bonanza results up to 807 g/t Au.

### HIGHLIGHTS

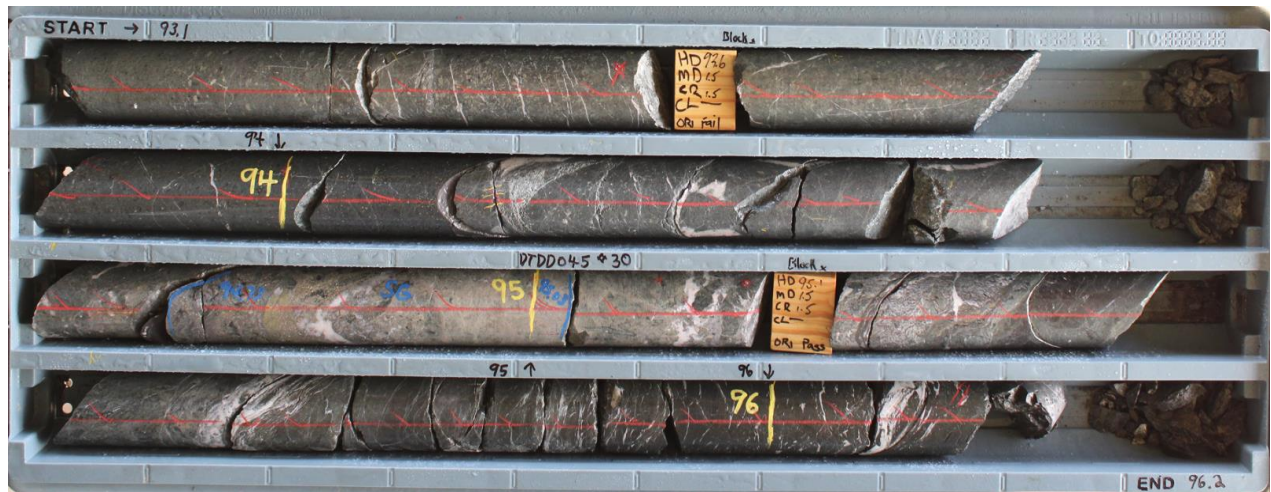
- First surface drill holes at the Dittmer Project have substantially extended the footprint of the deposit. Significant intersections include:
  - **DTDD045:** 4.0m @ 3.57 g/t Au, 5.2 g/t Ag & 0.10% Cu from 91.7m including 1.7m @ 8.04 g/t Au, 11.2 g/t Ag & 0.20% Cu from 94m including 0.4m @ 25.31 g/t Au, 31.4 g/t Ag & 0.42% Cu from 94.6m.
  - **DTDD043:** 1.0m @ 1.46 g/t Au from 141.5m
  - **DTDD044:** 2.3m @ 0.55 g/t Au from 20m including 0.4m @ 2.45 g/t Au from 21m
- Shared similarities between the new interpreted structure and the previous high-grade intersections from around the historic Dittmer mine indicate the same Duffer lode, with drill intersections now reported over a 530m strike length.
- DTDD045 was located 130m south of the defined Dittmer historic mine workings and UG drill area while DTDD043 and DTDD044 were located 150m north of the historic workings. This represents a major extension to the currently defined zone of mineralisation around the historic mine and provide further evidence of a major gold system. Drilling continues.
- New prospecting and rock chip sampling has located previously unrecognised veining in the Dittmer and Loch Neigh areas and assay results include **807.7 g/t Au, 225 g/t Ag, 0.34% Cu**. Nine out of seventeen samples exceeded 10 g/t Au, and five samples exceeded 100 g/t Au, further demonstrating the potential of this region.

**Ballymore Resources (ASX:BMR) has further evidence of a major gold system at its Dittmer Gold Project near Proserpine in north Queensland after its first three step-out surface drill holes returned significant intersections, extending the footprint of the project's mineralised zone.**

#### **Ballymore Managing Director, Mr David A-Izzeddin, said:**

*"The Dittmer Project continues to deliver. Our first step out surface drill holes have intersected the bonanza Duffer lode structure and extended the high-grade mineralisation previously encountered around the Dittmer mine. We now have intersected the Duffer lode over 530m and are starting to define a significant footprint for this rich gold-bearing structure.*

*Prospecting in the local area has also located further gossanous vein material in the Dittmer and Loch Neigh areas and returned the highest rock chip results ever reported at Dittmer. Our drilling and prospecting results, as well as the drilling that is currently happening in parallel at Cedar Ridge, 20km south of Dittmer mine, could be transformational in identifying the next major gold system in Queensland".*



**Figure 1** – Ore zone in DTDD045 (93.2 – 96.1m) including quartz-carbonate-pyrite-chalcopyrite veins within sheared, silicified volcanics.

### Dittmer Surface Drilling Program

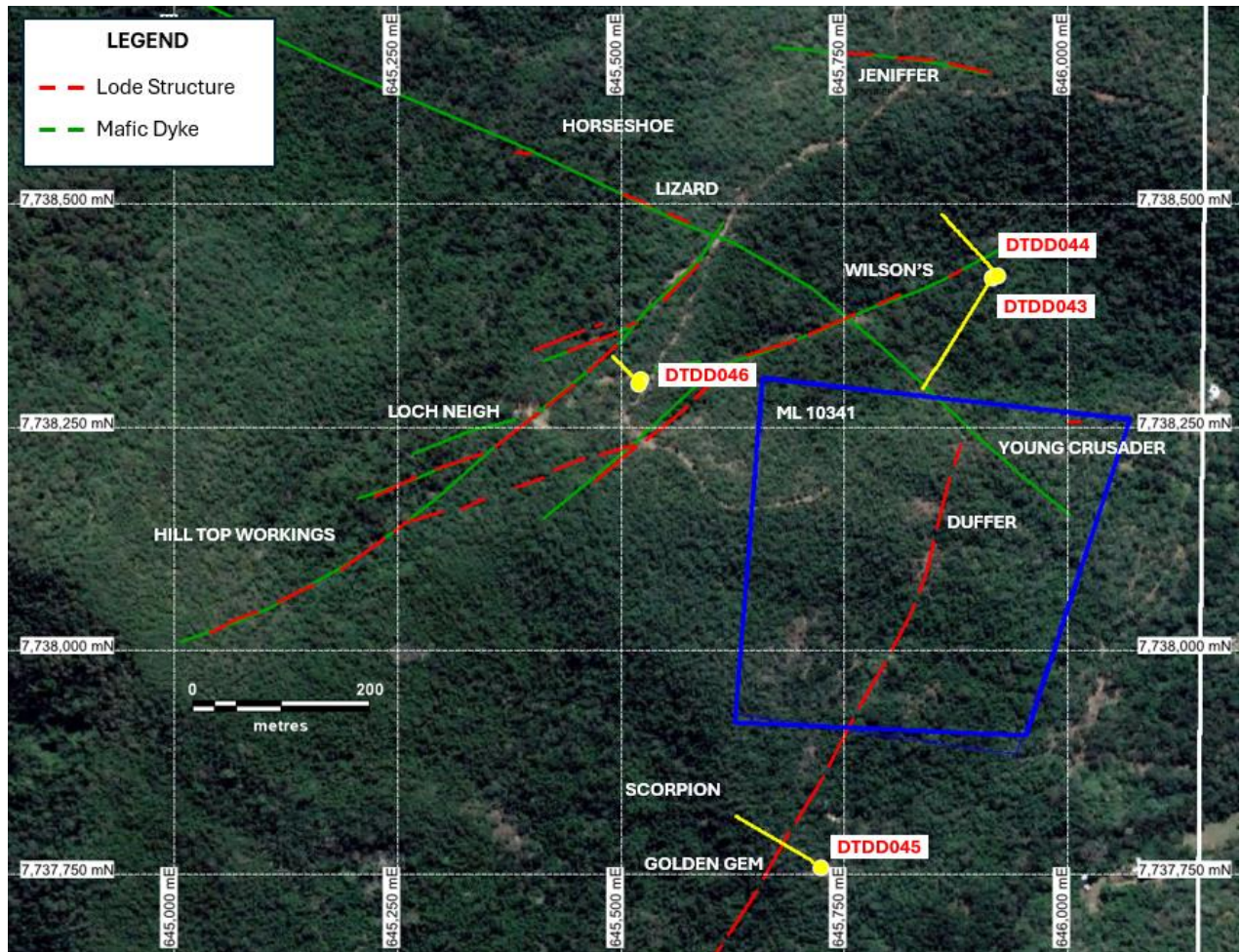
A step-out surface drilling campaign continues at Dittmer to test the lateral extent of this exciting discovery beyond the historic Dittmer mine zone. This represents the first major regional surface drilling program completed at Dittmer and has been designed to test for strike extensions to the old mine area, as demonstrated by the large geochemical anomaly and the presence of high-grade historic surface workings over more than 2km.

The initial program is testing the areas immediately north and south of the Duffer Lode as well as other structures in the local area at a broad initial spacing. To date five holes have been completed (DTDD043 – 046 including DTDD046A re-drill) for a total of 529.3m and have confirmed extensions to the Duffer Lode and Loch Neigh Lode.

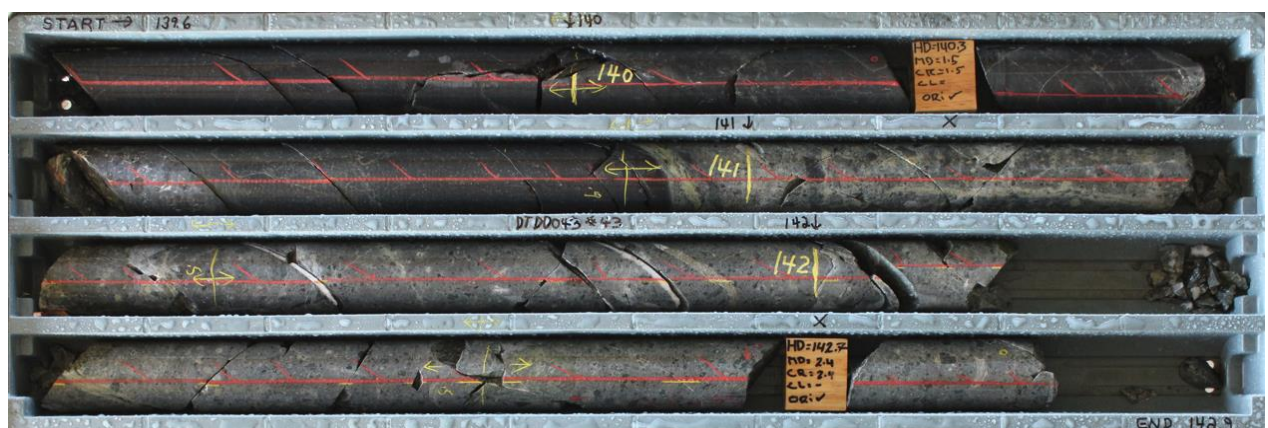
Assays have now been received for the first three drill holes (DTDD043 – 045):

- **DTDD043:** targeted the extension to the Duffer lode 150m north of the historic Dittmer mine workings. The hole encountered altered volcanic rocks along with a zone of narrow quartz-carbonate-pyrite-chalcopyrite veins in sericite-clay altered andesite volcanics from 140.9 – 142.2m.
- **DTDD044:** targeted the Wilsons lode, 300m north of the historic Dittmer mine workings. The hole encountered altered and sheared volcanic rocks crosscut by carbonate, laumontite and minor quartz-pyrite veins with chlorite-clay selvages including partially oxidised pyrite veins in chlorite altered andesite at 20.0 – 22.3m.

**DTDD045:** targeted the extension to the Duffer Lode, 130m south of the Dittmer mine, and intersected a number of zones of veining including at 52.0 – 53.0m as well as a zone of quartz-pyrite-chalcopyrite veins from 82.8 – 98.0m including a 30cm wide main lode vein at 94.6 - 94.9m. This result has extended the apparent zone of mineralisation at Dittmer, with further drilling currently underway



**Figure 2** – Location plan of Dittmer surface drill holes completed.



**Figure 3** – Mineralised zone in DTDD043 (139.6 – 142.9m), including narrow quartz veins in sericite altered andesite volcanics.

For personal use only



**Figure 4** – Main lode in DTDD045 (94.6 - 94.9m), including brecciated quartz vein with associated pyrite and chalcopyrite in sericite altered andesite volcanics.

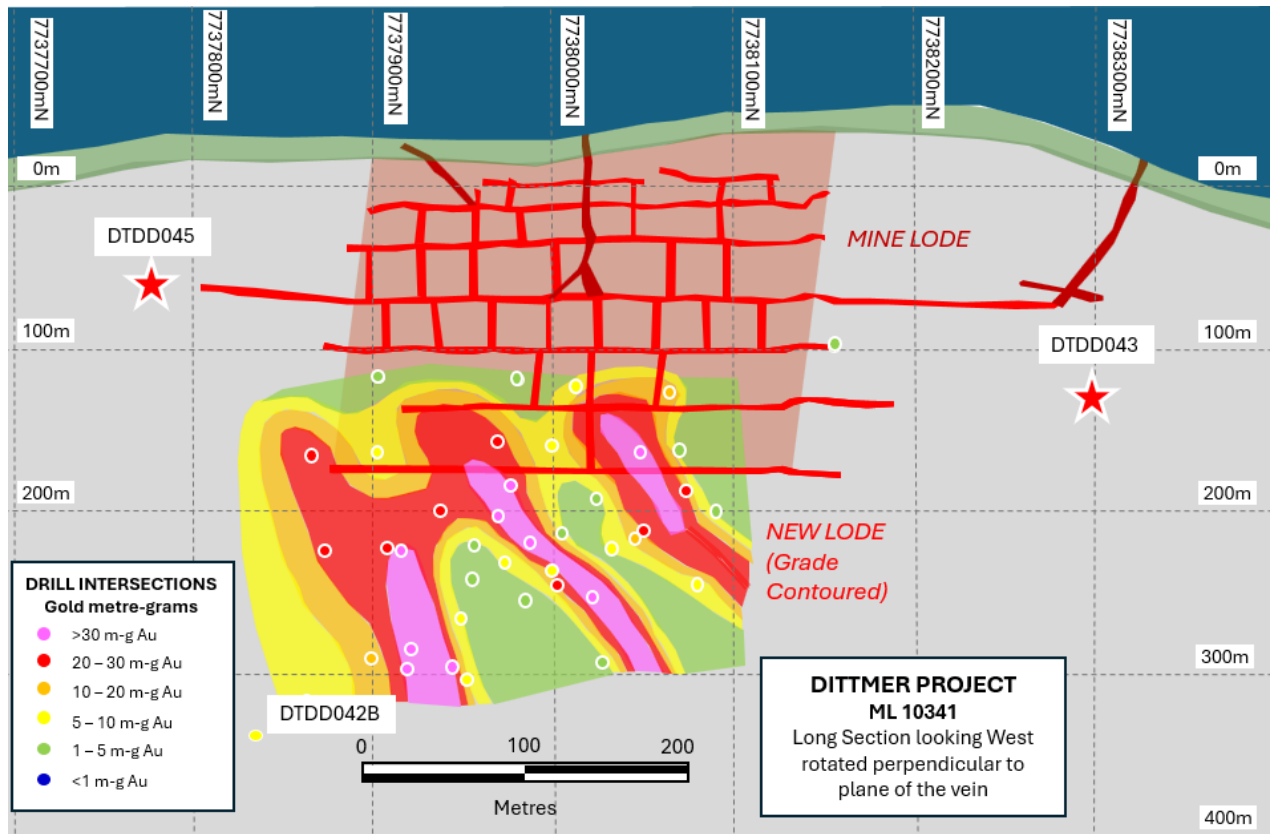
Significant results are summarised for these first three holes from the surface drilling program.

**Table 1** – Summary of assay results.

Cut-Off (Au g/t)	Hole	From	To	Interval (m)	Au (g/t)	Ag (g/t)	Cu (%)
1.0	DTDD043	141.5	142.5	1.0	1.457	1.39	0.02
0.1	DTDD044	20.0	22.3	2.3	0.546	1.78	0.00
1.0	Including	21.0	21.4	0.4	2.450	5.56	0.00
1.0	DTDD045	52.0	53.0	1.0	3.281	1.20	0.03
0.1	DTDD045	82.5	87.7	5.2	0.672	0.72	0.03
0.5	Including	83.5	87.7	4.2	0.753	0.74	0.03
1.0	Including	83.5	84.5	1.0	1.784	1.20	0.03
0.1	DTDD045	91.7	95.7	4.0	3.566	5.16	0.10
0.5	Including	92.5	95.7	3.2	4.401	6.31	0.12
1.0	Including	94.0	95.7	1.7	8.040	11.17	0.20
10.0	Including	94.6	95.0	0.4	25.310	31.43	0.42
0.1	DTDD045	120.0	121.0	1.0	0.278	0.19	0.00

Ballymore has continued to grow the Dittmer story. Firstly, we identified the repetition of the mine lode at depth and have reported significant drilling results, targeting this zone. This current surface drilling program is targeting historic workings and extensive geochemical anomalies, testing the interpretation that the historic Dittmer mine forms part of a much larger system. These results already have significant implications for the Dittmer project by extending the lateral extent of the known Duffer lode from 250m recognised in the historic mine. A number of north-plunging, high-grade shoots have also been confirmed and appear to be getting wider at depth.

With similar lode structures intersected in DTDD043, 044 and 045, the strike length of the recognised lode structure now potentially extends for at least 530m. Furthermore, the Stage 4 underground drilling completed earlier in 2024 drilled the deepest hole to date (DTDD042B) and has recognised the lode structure to depths of more than 300m down-dip from surface, with it potentially widening at depth. Given the high grades reported in drill holes to date over a growing area, the potential extent of this target could be substantial.



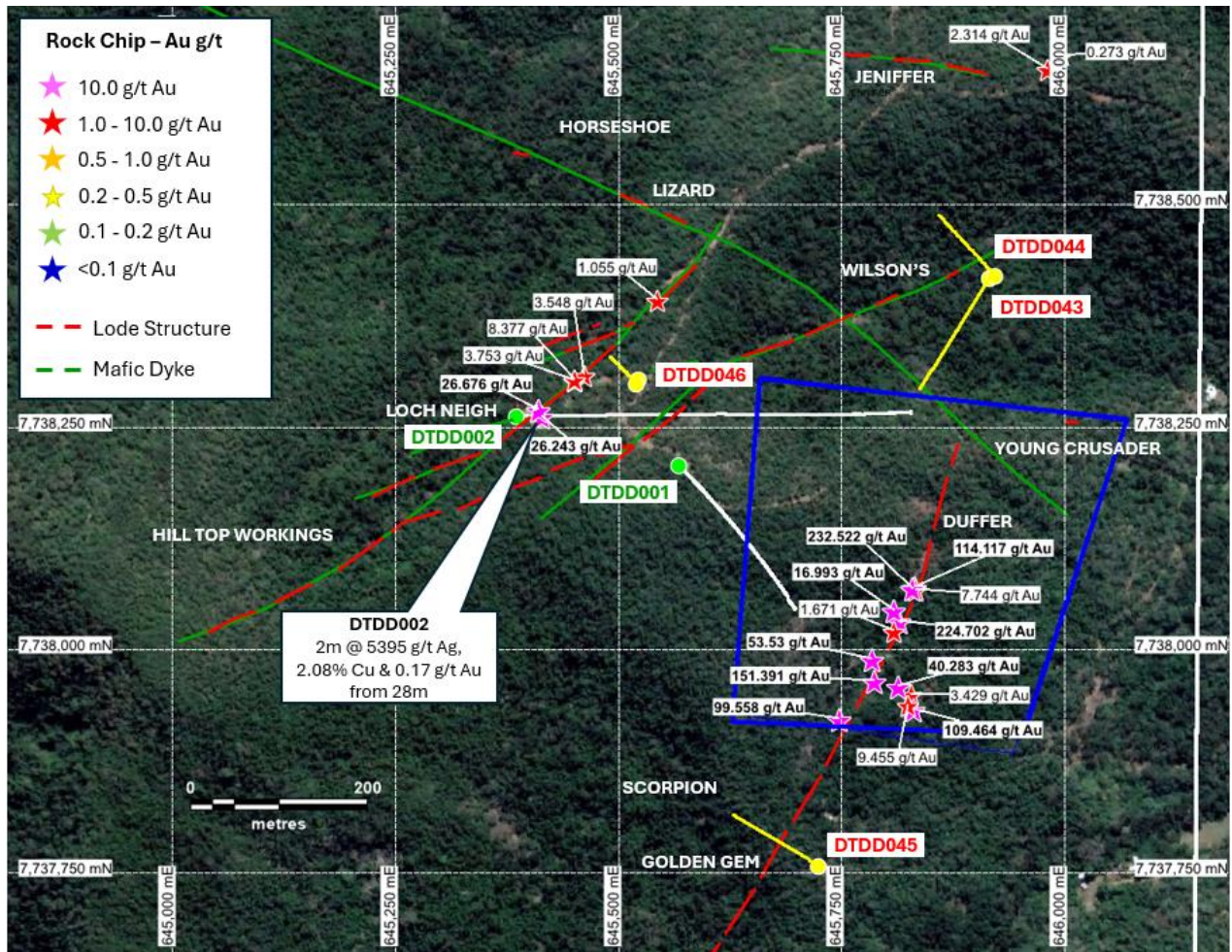
**Figure 5** – Long section looking west rotated perpendicular to the lode with the locations of recent drill holes DTDD043 and 045 and Stage 4 underground hole DTDD042B, extending the limits of the known lode to 530m along strike and +300m down-dip.

The current program comprises a series of shallow diamond holes on a broad spacing designed to confirm the larger footprint of the Dittmer mineralised system. The initial surface drill program is comprised of eight holes for 900m and is expected to be completed in late October.

### Further Prospecting in the Dittmer Environs

In parallel with the current surface drilling program at Dittmer, further prospecting and rock chip sampling has been undertaken. Additional veining has been located in the Dittmer and Loch Neigh areas and returned outstanding results including **807.7 g/t Au, 225 g/t Ag, 0.34% Cu and 161 ppm Te**. Nine out of 17 samples collected in this recent sampling program have exceeded 10 g/t Au, and five samples exceeded 100 g/t Au, further demonstrating the potential of this region.

For personal use only

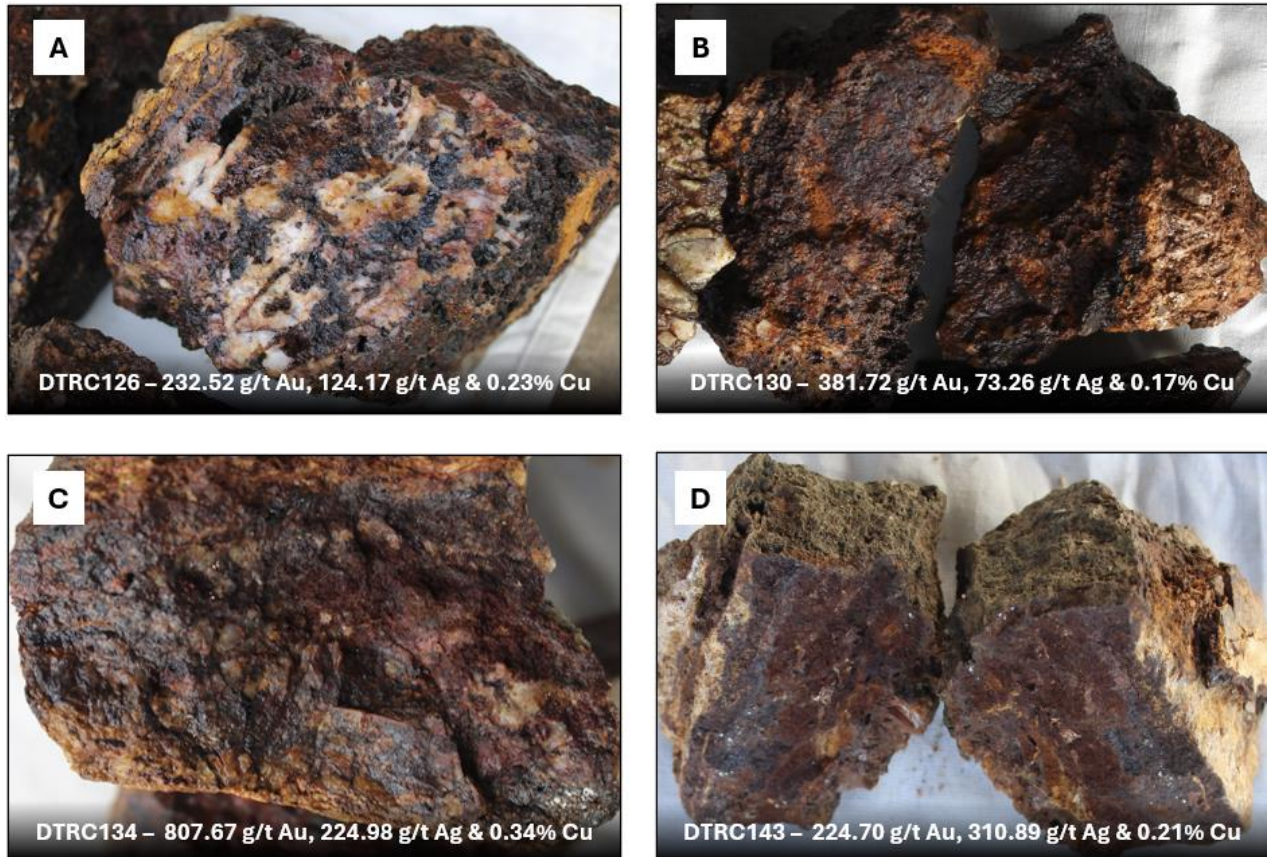


**Figure 6** – Location plan of Dittmer surface drill holes completed and rock chip locations.

A summary of significant results from the Dittmer prospect area include the following:

- DTRC134: 807.67 g/t Au, 224.98 g/t Ag & 0.34% Cu
- DTRC130: 381.72 g/t Au, 73.26 g/t Ag & 0.17% Cu
- DTRC126: 232.52 g/t Au, 124.17 g/t Ag & 0.23% Cu
- DTRC143: 224.70 g/t Au, 310.89 g/t Ag & 0.21% Cu
- DTRC129: 159.63 g/t Au, 37.17 g/t Ag & 0.04% Cu
- DTRC133: 116.78 g/t Au, 30.91 g/t Ag & 0.04% Cu
- DTRC144: 114.11 g/t Au, 52.88 g/t Ag & 0.23% Cu

For personal use only



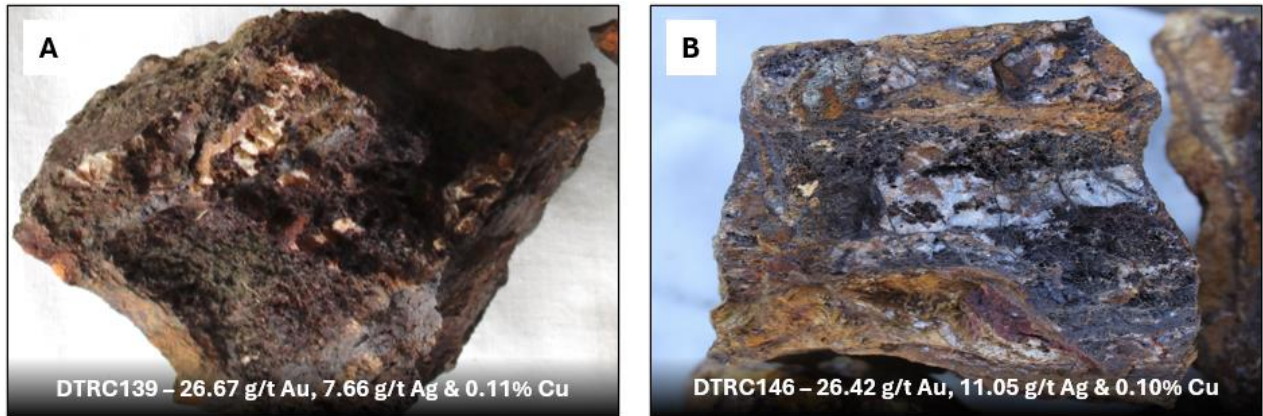
**Figure 7** – Examples of Dittmer rock chip samples.

A number of other lode structures have also been located in the Loch Neigh area, northwest of Dittmer. The Loch Neigh reef trends northeasterly and can be traced at surface for at least 300m along strike. The dip is variable but is generally 30 – 40° southeasterly. Ballymore intersected the lode structure in drill DTDD002 in 2020 and reported bonanza silver mineralisation including **2.0m @ 5395 g/t Ag, 2.08% Cu & 0.17 g/t Au** from 28m<sup>1</sup>.

A summary of significant rock chip results from the recently completed prospecting of the Loch Neigh prospect area include the following:

- DTRC139: 26.67 g/t Au, 7.66 g/t Ag & 0.11% Cu
- DTRC146: 26.24 g/t Au, 11.05 g/t Ag & 0.10% Cu

<sup>1</sup> DeRisk GeoMining Consultants (2021): Independent Geologist Report of the Queensland Exploration Assets held by Ballymore Resources



**Figure 8** – Examples of Loch Neigh rock chip samples.

In addition, two samples were collected from the eastern extension to the Jennifer lode, 600m north of Dittmer. This lode strikes east - west and rock chips have reported results including:

- DTRC135: 2.31 g/t Au & 0.93 g/t Ag
- DTRC136: 0.27 g/t Au & 0.21 g/t Ag

Further work is warranted to evaluate this lode structure, which has been the subject of little previous exploration evaluation.

### Day Dawn Drilling Update

The Day Dawn prospect is located 25 km east-southeast of Charters Towers, on EPM 18426, within the Ravenswood Project area. Ballymore recognised a series of stacked quartz veins that with elevated rock chip results up to 127.5 g/t Au and 7100 g/t Ag. The Company has now completed its inaugural RC drilling program of this target with 11 holes for 1,360m. Drilling encountered a number of quartz-carbonate-pyrite-arsenopyrite veins in granodiorite and volcanics. Results are expected to be received in November.



---

## Planned Activities

The Company is well funded, having successfully finalised an A\$11.2 million funding package in March 2024. On the back of this successful capital raise, the company is undertaking a major exploration program, including the following key activities and milestones in 2024:

- September 2024 Complete preliminary Cedar Ridge drilling program (Dittmer Project)
  - October 2024 Receive further Dittmer surface drilling assay results (Dittmer Project)
  - October 2024 Complete preliminary surface drilling program at Dittmer
  - October 2024 Receive Day Dawn drill assay results (Ravenswood Project)
  - November 2024 Receive Cedar Ridge drill assay results (Dittmer Project)
- 

**Approved by the Board of Ballymore Resources Limited.**

**For further information:**

**David A-Izzeddin**  
Managing Director  
daizzeddin@ballymorereres.com

**Gareth Quinn**  
Media and Investor Relations  
gareth@republicpr.com.au  
0417 711 108

## Competent Persons Statement

The information in this announcement that relates to Exploration Results is based on, and fairly represents, information compiled or reviewed by Mr David A-Izzeddin. Mr A-Izzeddin is a Member of The Australasian Institute of Geoscientists and is a Director and an employee of the Company. Mr A-Izzeddin has sufficient experience which is relevant to the style of mineralisation and type of deposit under consideration and to the activity which he is undertaking to qualify as a Competent Person as defined in the 2012 Edition of the 'Australasian Code for Reporting of Exploration Results, Mineral Resources and Ore Reserves'. Mr A-Izzeddin consents to the inclusion in the announcement of the matters based on his information in the form and context in which it applies. The Exploration Targets described in this announcement are conceptual in nature and there is insufficient information to establish whether further exploration will result in the determination of Mineral Resources.

## Forward-Looking Statements

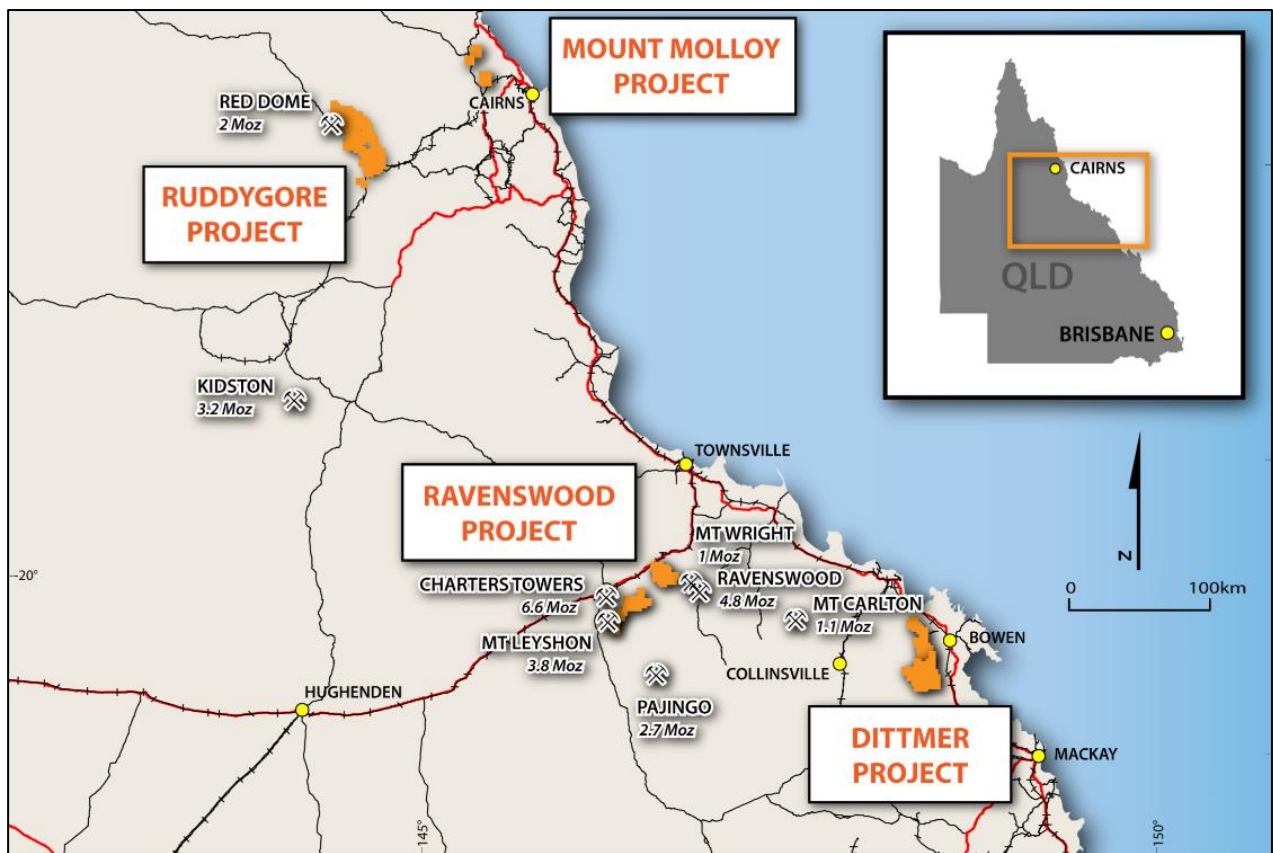
Certain statements made during or in connection with this statement contain or comprise certain forward-looking statements regarding the Company's Mineral Resources, exploration operations and other economic performance and financial conditions as well as general market outlook. Although the Company believes that the expectations reflected in such forward-looking statements are reasonable, such expectations are only predictions and are subject to inherent risks and uncertainties which could cause actual values, results, performance or achievements to differ materially from those expressed, implied or projected in any forward-looking statements and no assurance can be given that such expectations will prove to have been correct.

Accordingly, results could differ materially from those set out in the forward-looking statements as a result of, among other factors, changes in economic and market conditions, delays or changes in project development, success of business and operating initiatives, changes in the regulatory environment and other government actions, fluctuations in commodity prices and exchange rates and business and operational risk management. Except for statutory liability which cannot be excluded, each of the Company, its officers, employees and advisors expressly disclaim any responsibility for the accuracy or completeness of the material contained in this statement and excludes all liability whatsoever (including in negligence) for any loss or damage which may be suffered by any person as a consequence of any information in this statement or any error or omission. The Company undertakes no obligation to update publicly or release any revisions to these forward-looking statements to reflect events or circumstances after today's date or to reflect the occurrence of unanticipated events other than required by the Corporations Act and ASX Listing Rules. Accordingly, you should not place undue reliance on any forward-looking statement.

## About Ballymore Resources (ASX:BMR)

Ballymore holds a portfolio of exploration and development projects in prolific Queensland mineral belts that are highly prospective for gold and base metals. These consist of two granted Mining Leases (MLs) and fourteen Exploration Permits over four project areas at Dittmer, Ruddygore, Ravenswood, Mount Molloy. The total area covered by the tenements is 1,456 km<sup>2</sup>.

Known deposits in north-east Queensland include Kidston (5 Moz Au), Ravenswood/Mount Wright (5.8 Moz Au), Mount Leyshon (3.8 Moz Au), Red Dome/Mungana (3.2 Moz Au) and Mt Morgan (17 Moz Au and 239 Kt Cu). The deposits occur in a wide range of geological settings including porphyries, breccias, skarns and veins.



### Board

Andrew Greville, Chairman  
 David A-Izzeddin, Managing Director  
 Andrew Gilbert, Director – Operations  
 Nick Jorss, Non-Executive Director

### Head Office

Suite 606, Level 6  
 10 Market St Brisbane QLD 4000  
 Phone +617 3212 6299  
[ballymoreresources.com](http://ballymoreresources.com)

For personal use only

## APPENDIX 1. DITTMER – JORC CODE TABLE 1 CHECKLIST OF ASSESSMENT AND REPORTING CRITERIA

### Section 1: Sampling Techniques and Data

CRITERIA	JORC Code Explanation	Commentary
SAMPLING TECHNIQUES	<ul style="list-style-type: none"> <li>Nature and quality of sampling (e.g., cut channels, random chips, or specific specialised industry standard measurement tools appropriate to the minerals under investigation, such as down hole gamma sondes, or handheld XRF instruments, etc). These examples should not be taken as limiting the broad meaning of sampling.</li> </ul>	<ul style="list-style-type: none"> <li>Exploration has been undertaken at the Project since the early 1960s. Sampling methods have included surface rock chip and trenching, soil, and stream sediment samples, together with channel samples taken from underground exposures and drillhole samples comprising diamond core samples.</li> <li>Geochemistry from soil and stream sediment samples is used semi-quantitatively to guide further exploration and is not used for Mineral Resource estimation.</li> <li>The accuracy of rock chip geochemistry is generally high, but these samples are spot samples and generally not used in Mineral Resource estimation.</li> <li>The accuracy of trench and channel geochemistry is generally high. These samples are regularly used in Mineral Resource estimation.</li> <li>The quality of diamond coring is generally medium – high because the method is designed to sample the rock mass effectively in most conditions. Consequently, these samples can be representative of the interval drilled and can be used for Mineral Resource estimation.</li> </ul>
	<ul style="list-style-type: none"> <li>Include reference to measures taken to ensure sample representivity and the appropriate calibration of any measurement tools or systems used.</li> </ul>	<ul style="list-style-type: none"> <li>No information is available or documenting measures to ensure sample representivity for surface sampling methods. These methods are not used for Mineral Resource estimation.</li> <li>Channel sampling is an established method designed to deliver a representative sample of the interval being sampled.</li> <li>Diamond drilling is also an established method aimed at collecting representative samples of the interval being drilled.</li> </ul>
	<ul style="list-style-type: none"> <li>Aspects of the determination of mineralisation that are Material to the Public Report. In cases where 'industry standard' work has been done this would be relatively simple (e.g., 'reverse circulation drilling was used to obtain 1 m samples from which 3 kg was pulverised to produce a 30 g charge for fire assay'). In other cases, more explanation may be required, such as where there is coarse gold that has inherent sampling problems. Unusual commodities or mineralisation types (e.g., submarine nodules) may warrant disclosure of detailed information.</li> </ul>	<ul style="list-style-type: none"> <li>Economic gold mineralisation is measured in terms of parts per million and therefore rigorous sampling techniques must be adopted to ensure quantitative, precise measurements of gold concentration. If gold is present as medium – coarse grains, the entire sampling, sub-sampling, and analytical process must be more stringent.</li> </ul>
DRILLING TECHNIQUES	<ul style="list-style-type: none"> <li>Drill type (e.g., core, reverse circulation, open-hole hammer, rotary air blast, auger, Bangka, sonic, etc) and details (e.g., core diameter, triple or standard tube, depth of diamond tails, face-sampling bit, or other type, whether core is oriented and if so, by what method, etc).</li> </ul>	<ul style="list-style-type: none"> <li>Ballymore Surface Drilling: 2 diamond drillholes in HQ triple tube size were drilled at Dittmer (955.0 m) in 2020. All holes were oriented using an Ace instrument.</li> <li>Ballymore Underground Drilling: 6 diamond drillholes in NQ2 size were drilled at Dittmer (946.51m) in 2021. Another 4 diamond drillholes in NQ3 size were drilled at Dittmer (539.7m) in 2022. All holes were oriented using</li> </ul>

For personal use only

CRITERIA	JORC Code Explanation	Commentary
		<p>an ACT Mk2 instrument. Another 20 diamond drillholes in HQ3 triple tube to date have been completed in 2023 at Dittmer (3261.42m). Subsequently another 13 diamond drillholes in HQ3 triple tube to date have been completed in 2024 at Dittmer (2212.2m). All holes were oriented using an ACT Mk2 instrument.</p>
<p>DRILL SAMPLE RECOVERY</p>	<ul style="list-style-type: none"> <li>Method of recording and assessing core and chip sample recoveries and results assessed.</li> <li>Measures taken to maximise sample recovery and ensure representative nature of the samples.</li> <li>Whether a relationship exists between sample recovery and grade and whether sample bias may have occurred due to preferential loss/gain of fine/coarse material.</li> </ul>	<ul style="list-style-type: none"> <li>Ballymore surface drilling: Sample recovery was measured on a per-run basis and generally reported to be greater than 95%, except where drilling in the upper, weathered, and oxidised zones. However, Ballymore also reported some core loss associated with zones of alteration and mineralisation that could result in potential for sample bias.</li> <li>Ballymore underground drilling: Sample recovery was measured on a per-run basis and generally reported to be greater than 99%.</li> <li>Ballymore drilling: Used chrome barrels and controlled drilling in broken ground to maximise sample recovery. In addition, triple tube is used to maximise recovery.</li> <li>No assessment has been completed to determine if there is a relationship between sample recovery and grade, and whether there is any potential for sample bias associated with the drilling methods used to date.</li> </ul>
<p>LOGGING</p>	<ul style="list-style-type: none"> <li>Whether core and chip samples have been geologically and geotechnically logged to a level of detail to support appropriate Mineral Resource estimation, mining studies and metallurgical studies.</li> <li>Whether logging is qualitative or quantitative in nature. Core (or costean, channel, etc) photography.</li> <li>The total length and percentage of the relevant intersections logged.</li> </ul>	<ul style="list-style-type: none"> <li>Ballymore drilling: Drill core was logged for lithology, structure, alteration, mineralisation, and veining, which is deemed to be appropriate for the style of mineralisation and the lithologies encountered. All core was photographed. Logging information is adequate to support Mineral Resource estimation. Information to support geotechnical studies is available.</li> <li>Ballymore drilling: Logging of core is mostly qualitative, except for some semi-quantitative logging of sulphide content, quartz veining, RQD, and geotechnical parameters.</li> <li>Ballymore drilling: Geological logs were completed for all drilled intervals.</li> </ul>
<p>SUB-SAMPLING TECHNIQUES AND SAMPLE PREPARATION</p>	<ul style="list-style-type: none"> <li>If core, whether cut or sawn and whether quarter, half or all core taken.</li> <li>If non-core, whether riffled, tube sampled, rotary split, etc and whether sampled wet or dry.</li> <li>For all sample types, the nature, quality, and appropriateness of the sample preparation technique.</li> </ul>	<ul style="list-style-type: none"> <li>Ballymore drilling: Ballymore cut core samples in half or quarter using a diamond saw and where appropriate used geological contacts or mineralisation to define sample intervals.</li> <li>No non-core drilling has been undertaken.</li> <li>Ballymore drilling: Half core was submitted to the laboratory, generally 2 – 3 kg per sample. All of the core was dried, crushed to -6 mm, then pulverised to 85% - 75 µm. This method is considered appropriate for mineralisation that may have visible gold mineralisation.</li> <li>Ballymore Underground Channel Sampling: Samples were collected from underground exposures across the mapped lode. Generally, 2 – 3 kg samples were collected and despatched to the laboratory. All samples were dried, crushed to -6 mm, then pulverised to 85% - 75 µm. This method is considered</li> </ul>

CRITERIA	JORC Code Explanation	Commentary
	<ul style="list-style-type: none"> <li>Quality control procedures adopted for all sub-sampling stages to maximise representivity of samples.</li> <li>Measures taken to ensure that the sampling is representative of the in situ material collected, including for instance results for field duplicate/second-half sampling.</li> <li>Whether sample sizes are appropriate to the grain size of the material being sampled.</li> </ul>	<p>appropriate for mineralisation that may have visible gold mineralisation.</p> <ul style="list-style-type: none"> <li>Ballymore drilling: Drill core samples of cut core were consistently taken from the same side of the orientation line on the core to maintain consistency. All of the sample was crushed and pulverised to maximise sample representivity. Pulverised samples were tested for compliance to grinding specifications at the rate of 1 in 40.</li> <li>Ballymore Underground Channel Sampling: A diamond saw was used to cut a slot across the designated sample zone and ensure uniform sampling of the zone. All of the sample was crushed and pulverised to maximise sample representivity. Pulverised samples were tested for compliance to grinding specifications at the rate of 1 in 40.</li> <li>Ballymore drilling: QA/QC procedures included the insertion of quarter core field duplicates at the insertion rate of 1 in 20 samples. Field blanks were also submitted to the laboratory.</li> <li>Ballymore underground channel sampling: Field blanks were submitted to the laboratory</li> <li>Ballymore soil sampling: Field duplicates were submitted to the laboratory.</li> <li>No formal assessment has been undertaken to quantify the appropriate sample size required for good quality determination of gold content, given the nature of the gold mineralisation.</li> </ul>
<p>QUALITY OF ASSAY DATA AND LABORATORY TESTS</p>	<ul style="list-style-type: none"> <li>The nature, quality and appropriateness of the assaying and laboratory procedures used and whether the technique is considered partial or total.</li> </ul>	<ul style="list-style-type: none"> <li>Ballymore 2021 drilling and channel sampling: ALS Townsville Laboratory was used. Gold assays were analysed with a 50 g charge used for fire assay with an ICP-AES determination. Over range gold samples (&gt;10 ppm) were re-analysed by fire assay and gravimetric finish. In addition, a 0.25 g charge was taken for analysis for 48 elements (Ag, Al, As, Ba, Be, Bi, Ca, Cd, Ce, Co, Cr, Cs, Cu, Fe, Ga, Ge, Hf, In, K, La, Li, Mg, Mn, Mo, Na, Nb, Ni, P, Pb, Rb, Re, S, Sb, Sc, Se, Sn, Sr, Ta, Te, Th, Ti, Tl, U, V, W, Y, Zn, Zr) utilising a four-acid digest with an ICP-MS determination. Any over range Cu (&gt;10000 ppm) and Ag (&gt;100 ppm) was re-analysed using a standard Ore Grade method utilising a four-acid digest producing a volumetrically precise digest analysed with an ICP-AES finish for high detection limits. The fire assay method for gold using either a 30 g or 50 g charge is an appropriate assay method and is normally considered a total assay method, except where gold grain size is very coarse.</li> <li>Ballymore 2022, 2023 &amp; 2024 drilling: Intertek Townsville Laboratory was used. Gold assays were analysed with a 50 g charge used for fire assay with an ICP-AES determination. In addition, a 0.25 g charge was taken for analysis for 48 elements (Ag, Al, As, Ba, Be, Bi, Ca, Cd, Ce, Co, Cr, Cs, Cu, Fe, Ga, Ge, Hf, In, K, La, Li, Mg, Mn, Mo, Na, Nb, Ni, P, Pb, Rb, Re, S, Sb, Sc, Se, Sn, Sr, Ta, Te, Th, Ti, Tl, U, V, W, Y, Zn, Zr) utilising a four-acid digest with an ICP-MS</li> </ul>

CRITERIA	JORC Code Explanation	Commentary
	<ul style="list-style-type: none"> <li>For geophysical tools, spectrometers, handheld XRF instruments, etc, the parameters used in determining the analysis including instrument make and model, reading times, calibrations factors applied and their derivation, etc.</li> <li>Nature of quality control procedures adopted (e.g., standards, blanks, duplicates, external laboratory checks) and whether acceptable levels of accuracy (i.e., lack of bias) and precision have been established.</li> </ul>	<p>determination. Any over range Cu (&gt;10000 ppm) was re-analysed using a standard Ore Grade method utilising a four-acid digest producing a volumetrically precise digest analysed with an ICP-AES finish for high detection limits. The fire assay method for gold using either a 30 g or 50 g charge is an appropriate assay method and is normally considered a total assay method, except where gold grain size is very coarse.</p> <ul style="list-style-type: none"> <li>Ballymore rock chip samples were analysed at ALS Townsville or Intertek using a multi-element suite by aqua regia digestion and ICP-MS finish. For most elements, this is considered as a total analysis. Gold was analysed with a 50 g charge used for fire assay with an ICP-AES determination. Normally the gold analysis would be considered a total analysis.</li> <li>Ballymore soil samples were analysed at Intertek Townsville using a multi-element suite by aqua regia digestion and ICP-MS finish. For most elements, this is considered as a total analysis.</li> </ul> <p>No geophysical tools, spectrometers, or handheld XRF instruments have been used to date to determine chemical composition at a semi-quantitative level of accuracy.</p> <ul style="list-style-type: none"> <li>Ballymore drilling: In addition to blanks and field duplicates, commercial CRMs of low grade to high grade gold ore material were prepared and certified for Au, Ag and Cu by Ore Research &amp; Exploration Services Pty Ltd. These were incorporated into the sampling stream to achieve an overall insertion rate of 1 duplicate, blank or CRM for every 10 core samples.</li> <li>Ballymore Channel Sampling: In addition to blanks, commercial CRMs of low grade to high grade gold ore material were prepared and certified for Au, Ag and Cu by Ore Research &amp; Exploration Services Pty Ltd. These were incorporated into the sampling stream to achieve an overall insertion rate of 1 blank or CRM for every 10 core samples as a minimum.</li> <li>Company staff routinely monitor QA/QC results and liaise with the laboratory if any dubious results are reported.</li> </ul>
<p>VERIFICATION OF SAMPLING AND ASSAYING</p>	<ul style="list-style-type: none"> <li>The verification of significant intersections by either independent or alternative company personnel.</li> <li>The use of twinned holes.</li> <li>Documentation of primary data, data entry procedures, data verification, data storage (physical and electronic) protocols.</li> </ul>	<ul style="list-style-type: none"> <li>It has not been possible to independently verify significant intersections to date.</li> <li>There has been no use of twinned holes to date.</li> <li>Ballymore drilling: Primary logging data was recorded digitally onto electronic spread sheets and validated against code tables by the logging geologist. Primary analytical data was received electronically in csv file format and imported directly into an electronic assay register spread sheet. Data validation was conducted by comparing the spreadsheet data against the Certificate of Analysis supplied as a secured pdf file by the laboratory.</li> </ul>

CRITERIA	JORC Code Explanation	Commentary
LOCATION OF DATA POINTS	<ul style="list-style-type: none"> <li>Discuss any adjustment to assay data.</li> </ul>	<ul style="list-style-type: none"> <li>No adjustments to assay data have been made.</li> </ul>
	<ul style="list-style-type: none"> <li>Accuracy and quality of surveys used to locate drill holes (collar and down-hole surveys), trenches, mine workings and other locations used in Mineral Resource estimation.</li> </ul>	<ul style="list-style-type: none"> <li>Underground workings: Ballymore employed a contract surveyor to survey underground workings and channel sample locations to sub-metre accuracy.</li> <li>Ballymore surface drilling: Drillhole collar locations were initially set out (and reported) using a handheld GPS with a location error of +/- 5m. All holes were subsequently surveyed by contract surveyor to a sub-metre accuracy, with data supplied electronically as spreadsheets and pdf files. The azimuth and dip at the start of the hole was recorded using a line of sight Suunto compass and Suunto clinometer by the site geologist. The orientation and dip of drillholes are measured with downhole surveys @ 15 m, 30 m, then every 30 m using a REFLEX single/multi-shot survey tool. End of hole surveys were also taken for each hole. At hole completion, all holes were gyro surveyed. Ballymore also employed a contract surveyor to survey the drillhole collars to sub-metre accuracy.</li> <li>Ballymore underground drilling: Drillhole collar locations and planned azimuth were initially set out with a surveyor marking front and back sights. Upon completion, all underground drill holes were subsequently surveyed by contract surveyor to a sub-metre accuracy, with data supplied electronically as spreadsheets and pdf files. The azimuth and dip at the start of the hole was using a REFLEX single/multi-shot survey tool and verified by the site geologist. The orientation and dip of drillholes are measured with downhole surveys @ 15 m, 30 m, then every 30 m using a REFLEX single/multi-shot survey tool. End of hole surveys were also taken for each hole. At hole completion, all holes were gyro surveyed.</li> </ul>
	<ul style="list-style-type: none"> <li>Specification of the grid system used.</li> <li>Quality and adequacy of topographic control.</li> </ul>	<ul style="list-style-type: none"> <li>The co-ordinate system used is MGA94 zone 55 Datum.</li> <li>Quality of the surface topographic control data is poor and is currently reliant on public domain data.</li> </ul>
DATA SPACING AND DISTRIBUTION	<ul style="list-style-type: none"> <li>Data spacing for reporting of Exploration Results.</li> </ul>	<ul style="list-style-type: none"> <li>The Dittmer mine has not been previously drilled and the initial Ballymore drillholes were sited to test beneath historic workings and not conducted in a regular grid type pattern. The steep terrain also impacted the siting of drill sites.</li> <li>The spacing of drillhole data is variable.</li> </ul>
	<ul style="list-style-type: none"> <li>Whether the data spacing and distribution is sufficient to establish the degree of geological and grade continuity appropriate for the Mineral Resource and Ore Reserve estimation procedure(s) and classifications applied.</li> </ul>	<ul style="list-style-type: none"> <li>There are no Mineral Resources or Ore Reserves.</li> <li>There is insufficient drill spacing to establish the degree of geological and grade continuity appropriate for Mineral Resource and Ore Reserve estimation.</li> </ul>
	<ul style="list-style-type: none"> <li>Whether sample compositing has been applied.</li> </ul>	<ul style="list-style-type: none"> <li>No sample compositing was carried out on site.</li> <li>For reporting purposes, some drillhole assay results have been composited together to report contiguous zones of mineralisation.</li> </ul>



CRITERIA	JORC Code Explanation	Commentary
ORIENTATION OF DATA IN RELATION TO GEOLOGICAL STRUCTURE	<ul style="list-style-type: none"> <li>Whether the orientation of sampling achieves unbiased sampling of possible structures and the extent to which this is known, considering the deposit type.</li> </ul>	<ul style="list-style-type: none"> <li>Drillholes were oriented to intersect the interpreted mineralisation zones as oblique (perpendicular) as possible. Orientated drill core collected by Ballymore has confirmed the orientation of drilling.</li> <li>To the extent known, drilling is assumed to be unbiased.</li> </ul>
	<ul style="list-style-type: none"> <li>If the relationship between the drilling orientation and the orientation of key mineralised structures is considered to have introduced a sampling bias, this should be assessed and reported if material.</li> </ul>	<ul style="list-style-type: none"> <li>No sampling bias is considered to have been introduced in drilling completed.</li> </ul>
SAMPLE SECURITY	<ul style="list-style-type: none"> <li>The measures taken to ensure sample security.</li> </ul>	<ul style="list-style-type: none"> <li>Ballymore drilling: Drilling and sampling was supervised and undertaken by company staff. Samples were double bagged, palletised and shrink wrapped at the core shed before dispatch to the laboratory by Ballymore staff.</li> <li>Ballymore underground channel and rock chip sampling: Sampling was supervised and undertaken by company staff. Samples were double bagged, palletised and shrink wrapped at site before dispatch to the laboratory by Ballymore staff.</li> </ul>
AUDITS OR REVIEWS	<ul style="list-style-type: none"> <li>The results of any audits or reviews of sampling techniques and data.</li> </ul>	<ul style="list-style-type: none"> <li>Ballymore drilling: Internal auditing procedures and reviews were regularly undertaken on sampling techniques, standard operating procedures, and laboratory processes.</li> </ul>

## Section 2: Reporting of Exploration Results

CRITERIA	JORC Code explanation	Commentary
MINERAL TENEMENT AND LAND TENURE STATUS	<ul style="list-style-type: none"> <li>Type, reference name/number, location and ownership including agreements or material issues with third parties such as joint ventures, partnerships, overriding royalties, native title interests, historical sites, wilderness or national park and environmental settings.</li> </ul>	<ul style="list-style-type: none"> <li>The Project tenements comprise ML 10340, ML 10341, EPM 14255, EPM 26912 and EPM 27282. All licences are 100% held by Ballymore Resources Ltd.</li> </ul>
	<ul style="list-style-type: none"> <li>The security of the tenure held at the time of reporting along with any known impediments to obtaining a licence to operate in the area.</li> </ul>	<ul style="list-style-type: none"> <li>All tenements are in good standing.</li> </ul>
EXPLORATION DONE BY OTHER PARTIES	<ul style="list-style-type: none"> <li>Acknowledgment and appraisal of exploration by other parties.</li> </ul>	<ul style="list-style-type: none"> <li>ML 10341 contains the Dittmer Mine, which worked the Duffer Lode from 1935 to 1951 and again from 1968 to 1970 to produce some 54,500 oz Au.</li> <li>Previous exploration across the EPMs includes stream sediment sampling, geological mapping, soil sampling and geophysical surveys. The main exploration companies active in the area were CRA Exploration, St. Joseph Phelps Dodge Exploration, Carpentaria Exploration Co, Mines Administration, Buddha Gold Mines in joint venture with Homestake Gold, and Loch Neigh Gold.</li> </ul>
GEOLOGY	<ul style="list-style-type: none"> <li>Deposit type, geological setting, and style of mineralisation.</li> </ul>	<ul style="list-style-type: none"> <li>The Dittmer district is dominated by three main tectonostratigraphic sequences – Carboniferous intrusives, Permian volcanics and sediments, and Cretaceous intrusives.</li> <li>Mineralisation is considered to be of IRGS style, with deposits often formed in structurally active</li> </ul>

CRITERIA	JORC Code explanation	Commentary
		areas where large crustal steep faults are intersected by other structures to produce active dilatant sites and deep plumbing systems during periods of intrusion and hydrothermal activity.
DRILL HOLE INFORMATION	<ul style="list-style-type: none"> <li>A summary of all information material to the understanding of the exploration results including a tabulation of the following information for all Material drill holes:               <ul style="list-style-type: none"> <li>Easting and northing of the drill hole collar.</li> <li>Elevation or RL (Reduced Level – elevation above sea level in metres) of the drill hole collar.</li> <li>Dip and azimuth of the hole.</li> <li>Down hole length and interception depth.</li> <li>Hole length.</li> </ul> </li> </ul>	<ul style="list-style-type: none"> <li>Refer to Appendix 2.</li> </ul>
	<ul style="list-style-type: none"> <li>If the exclusion of this information is justified on the basis that the information is not Material and this exclusion does not detract from the understanding of the report, the Competent Person should clearly explain why this is the case.</li> </ul>	<ul style="list-style-type: none"> <li>Refer to Appendix 2.</li> </ul>
DATA AGGREGATION METHODS	<ul style="list-style-type: none"> <li>In reporting Exploration Results, weighting averaging techniques, maximum and/or minimum grade truncations (e.g., cutting of high grades) and cut-off grades are usually Material and should be stated.</li> </ul>	<ul style="list-style-type: none"> <li>The mineralised drill intersections are reported as downhole intervals and were not converted to true widths. True widths may be up to 50% less than drill intersections pending confirmation of mineralisation geometry.</li> <li>No capping of high grades was performed in the aggregation process.</li> </ul>
	<ul style="list-style-type: none"> <li>Where aggregate intercepts incorporate short lengths of high grade results and longer lengths of low grade results, the procedure used for such aggregation should be stated and some typical examples of such aggregations should be shown in detail.</li> </ul>	<ul style="list-style-type: none"> <li>The drill intercepts reported were calculated using a 0.1, 0.5, 1.0 and 10.0 g/t Au cut-off grade. Gold grade for the intercept was calculated as a weighted average grade. Up to 2 m (down hole) of internal waste (&lt; 0.5 g/t Au) was included in some cases.</li> </ul>
	<ul style="list-style-type: none"> <li>The assumptions used for any reporting of metal equivalent values should be clearly stated.</li> </ul>	<ul style="list-style-type: none"> <li>No metal equivalents are reported.</li> </ul>
RELATIONSHIP BETWEEN MINERALISATION WIDTHS AND INTERCEPT LENGTHS	<ul style="list-style-type: none"> <li>These relationships are particularly important in the reporting of Exploration Results.</li> </ul>	<ul style="list-style-type: none"> <li>No local grid has been applied. The Duffer Lode at Dittmer strikes roughly north-south.</li> </ul>
	<ul style="list-style-type: none"> <li>If the geometry of the mineralisation with respect to the drill hole angle is known, its nature should be reported.</li> </ul>	<ul style="list-style-type: none"> <li>Drillholes were generally oriented perpendicular to the strike of the shear zone and angled in order to intersect the moderately dipping mineralised zones at a high angle.</li> </ul>
	<ul style="list-style-type: none"> <li>If it is not known and only the down hole lengths are reported, there should be a clear statement to this effect (e.g., 'down hole length, true width not known').</li> </ul>	<ul style="list-style-type: none"> <li>The mineralised intercepts generally intersect the interpreted dip of the mineralisation at a high angle but are not true widths.</li> </ul>
DIAGRAMS	<ul style="list-style-type: none"> <li>Appropriate maps and sections (with scales) and tabulations of intercepts should be included for any significant discovery being reported. These should include, but not be limited to a plan view of drill hole collar locations and appropriate sectional views.</li> </ul>	<ul style="list-style-type: none"> <li>Refer to figures contained within this report.</li> </ul>
BALANCED REPORTING	<ul style="list-style-type: none"> <li>Where comprehensive reporting of all Exploration Results is not practicable, representative reporting of both low and high grades and/or widths should be practiced to avoid misleading reporting of Exploration Results.</li> </ul>	<ul style="list-style-type: none"> <li>Balanced reporting of Exploration Results is presented within this report.</li> </ul>
OTHER SUBSTANTIVE EXPLORATION DATA	<ul style="list-style-type: none"> <li>Other exploration data, if meaningful and material, should be reported including (but not limited to): geological observations; geophysical survey results; geochemical</li> </ul>	<ul style="list-style-type: none"> <li>The Project includes exploration data collected by previous companies, including regional stream sediment geochemical data, soil sample and rock chip data, geological mapping data, drilling data,</li> </ul>

CRITERIA	JORC Code explanation	Commentary
	<p>survey results; bulk samples – size and method of treatment; metallurgical test results; bulk density, groundwater, geotechnical and rock characteristics; potential deleterious or contaminating substances.</p>	<p>geophysical survey data, and costean data. Much of this data has been captured and validated into a GIS database.</p> <ul style="list-style-type: none"> <li>• Previous mining has been limited and involved very selective mining and hand sorting. No systematic data has historically been collected to assess metallurgy and mining parameters relevant to a modern operation.</li> <li>• Metallurgical tests of selected mineralised drill core and stope backfill material, including cyanide leach testwork, floatation testwork and gravity concentration tests were conducted by Ballymore in 2023. Cyanide leach testing work produced positive results ranging between 79% and 99%. Rougher floatation tests have reported positive results of 87.9% Au, 91.5% Ag and 85.0% Cu. Gravity concentration test work has also shown promise with gold recovery of 32.0% in Knelson and tabling concentration with an upgrade from 9.1g/t to 113.0g/t for the primary ore.</li> <li>• Further metallurgical work is warranted.</li> </ul>
<p>FURTHER WORK</p>	<ul style="list-style-type: none"> <li>• The nature and scale of planned further work (e.g., tests for lateral extensions or depth extensions or large-scale step-out drilling).</li> <li>• Diagrams clearly highlighting the areas of possible extensions, including the main geological interpretations and future drilling areas, provided this information is not commercially sensitive.</li> </ul>	<ul style="list-style-type: none"> <li>• Ballymore plans to conduct surface geological mapping and geochemistry, geophysics surveys and drilling across various high-priority target areas over the next two years. In addition, the Company will continue to refurbish and dewater the Dittmer mine and assess options to recommence production.</li> <li>• Refer to figures contained within this report.</li> </ul>

## APPENDIX 2. DITTMER DRILL COLLAR AND SURVEY INFORMATION

Company	Target	HoleID	Hole Type	East (MGA)	North (MGA)	RL	Depth (m)	Dip (°)	Azimuth (° MGA)	Licence	Year
Ballymore	Dittmer	DTDD043*	Diamond	645917	7738418	191	188.2	-40	212	EPM 14255	2024
Ballymore	Dittmer	DTDD044*	Diamond	645922	7738421	191	125.3	-44	317	EPM 14255	2024
Ballymore	Dittmer	DTDD045*	Diamond	645724	7737758	189	129.6	-32	302	EPM 14255	2024
Ballymore	Dittmer	DTDD046*	Diamond	645523	7738304	351	10	-60	315	EPM 14255	2024
Ballymore	Dittmer	DTDD046A*	Diamond	645520	7738300	351	76.2	-58	316	EPM 14255	2024

\* Drill hole collar location estimated and yet to be picked up by surveyor

For personal use only

## APPENDIX 3. DITTMER ROCK CHIP RESULTS

Sample ID	Eastng (MGA)	Northing (MGA)	RL	Sample Type	Licence	Prospect	Au (g/t)	Ag (g/t)	As (ppm)	Bi (ppm)	Cu (ppm)	Fe (%)	Pb (ppm)	S (%)	Te (ppm)	W (ppm)	Zn (ppm)
DTRC126	645829	7738070	244	Mullock	ML10341	Duffer	232.522	124.17	627.7	457.23	2317.3	17.27	77.9	0.12	27.5	1.1	43
DTRC127	645809	7738045	227	Float	ML10341	Duffer	16.993	6.75	201.3	13.64	660.8	5.29	9	0.37	4	4.6	24
DTRC128	645784	7737990	211	Float	ML10341	Duffer	53.53	29.18	124.6	24.94	813	5.61	2.5	0.16	8.2	0.2	60
DTRC129	645787	7737966	209	Float	ML10341	Duffer	159.638	37.17	105.7	50.11	413.3	4.49	3.7	0.12	13.9	1	10
DTRC130	645748	7737923	220	Float	ML10341	Duffer	381.725	73.26	1208.9	203.81	1711.5	19.41	9.7	0.06	57.2	1.7	28
DTRC131	645828	7737952	202	Mullock	ML10341	Duffer	3.429	0.5	25.6	13.02	52.5	1.45	1.6	0.4	8	0.1	10
DTRC132	645813	7737960	202	Float	ML10341	Duffer	40.283	12.27	92.1	205.13	230.8	4.11	75.7	0.68	4.3	2	11
DTRC133	645831	7737934	196	Float	ML10341	Duffer	116.782	30.91	192.9	115.31	378.1	4.25	15.7	0.18	3	0.3	21
DTRC134	645824	7737939	196	Mullock	ML10341	Duffer	807.677	224.98	363	262.15	3366.8	22.93	12.2	1.13	161	0.9	90
DTRC135	645981	7738653	237	Mullock	EPM14255	Jennifer	2.314	0.93	68.9	2.75	20	17.7	4.1	-0.05	0.8	6.1	279
DTRC136	645998	7738668	242	Float	EPM14255	Jennifer	0.273	0.21	7.5	0.46	7.7	11.66	6.8	-0.05	-0.2	5	375
DTRC137	645451	7738304	368	Float	EPM14255	Loch Neigh	3.753	2.66	349.6	35.69	1115	17.25	19.2	-0.05	1.9	9.2	52
DTRC138	645451	7738305	368	Float	EPM14255	Loch Neigh	8.377	4.8	837.8	282.99	589.8	26.21	194.4	0.29	4.3	454.2	137
DTRC139	645410	7738270	374	Float	EPM14255	Loch Neigh	26.676	7.66	1458.2	538.09	1130.7	28.8	128.9	0.19	4	497.4	53
DTRC140	645544	7738393	319	Subcrop	EPM14255	Loch Neigh	6.446	2	738.6	66.79	211.8	21.62	60.8	-0.05	1.4	11.4	211
DTRC141	645544	7738394	319	Subcrop	EPM14255	Loch Neigh	1.055	4.06	426.5	37.28	261.3	40.4	74.1	0.13	0.5	2.8	341
DTRC142	645809	7738022	214	Float	ML10341	Duffer	1.671	1.06	17.8	3.44	189.6	1.61	2.8	-0.05	0.3	0.6	5
DTRC143	645815	7738033	214	Float	ML10341	Duffer	224.702	310.89	1137.7	4065.02	2063	30.71	413.4	1.56	25.7	0.8	103
DTRC144	645832	7738071	244	Float	ML10341	Duffer	114.117	52.88	427.5	133.98	2313.5	22.38	282.6	0.32	16	3	29
DTRC145	645833	7738069	244	Float	ML10341	Duffer	7.744	4.2	10.7	10.6	998	0.8	6.2	0.09	1.1	0.2	4
DTRC146	645414	7738263	380	Outcrop	EPM14255	Loch Neigh	26.243	11.05	1022.5	414.32	1033.9	24.07	339.3	0.11	2.8	11.8	138
DTRC147	645462	7738310	366	Float	EPM14255	Loch Neigh	3.548	5.02	241.3	224.49	784.3	20.26	246.3	0.13	2.4	6.6	82

For personal use only