

ASX ANNOUNCEMENT

ASX RELEASE: 18 September 2024

New gold trend delineated from soils in Southern Cross

HIGHLIGHTS



Extensive auger drilling program over E77/2804 and P77/4585 has defined multiple anomalies for gold and lithium.



Two gold trends with assays returned up to 437.2ppb Au, and anomalous pathfinder elements.



Multiple lithium readings +50ppm over greenstone terrane proximal to granites.

XTC Lithium Limited (ASX: XTC) (XTC, or the Company) is pleased to announce the results from a recent auger drilling program completed across two tenements in its Southern Cross package. A total of 598 drill holes were sampled across E77/2804 and P77/4585 targeting both lithium and gold.

The geochemical auger drilling program has successfully outlined two significant gold anomalies with values up to 437.2ppb Au and 1.1km strike length. The anomalies are along trend from the historical Southern Star open pit gold mine of the Marvel Loch/ Southern Cross region with an extensive +30ppb Au trend extending almost the length of the tenement. The higher grade +50ppb Au zones show two large anomalies, with the northern anomaly associated with anomalous arsenic, nickel, and chrome suggesting the potential presence of ultramafics which are favourable hosts for contact shears and vein mineralisation in greenstone terrane. The southern gold anomaly appears to have some overlap with anomalous bismuth which has been used as a pathfinder element for gold mineralisation in the region and provide additional target areas for follow up analysis.

Additionally, lithium anomalies over 50ppm were returned with a maximum reading of 96.7ppm Li. The anomalies concentrate in the central part of the tenement approximately 1-2km from the regional granitoid and may indicate the presence of pegmatites. There are rare overlaps of



ASX ANNOUNCEMENT

18 September 2024

anomalous caesium, niobium or tantalum observed with the lithium, but no strong patterns observed. Possible extensions to the NW may be investigated with additional sampling. These preliminary auger results are on a 100x200m grid and provide strong follow up targets for further field testing.

A 4WD mounted auger was utilised to take samples from approximately 1m depth. Auger contractors Gyro Australia logged details for each sample including colour, HCl reaction and depth. A single sample was collected for each drill hole and samples were analysed via the UltraFines method at Labwest. The CSIRO developed method essentially analyses the fine clay fraction of the sample which is most likely to represent weathered portions of in-situ material, as opposed to transported. The method has proven successful in detecting low level anomalies and provides a full multi-element suite for pathfinder element assessment. XTC will continue to investigate the anomalies further with additional desktop interpretation and plan an infill program to refine targets.

For personal use only

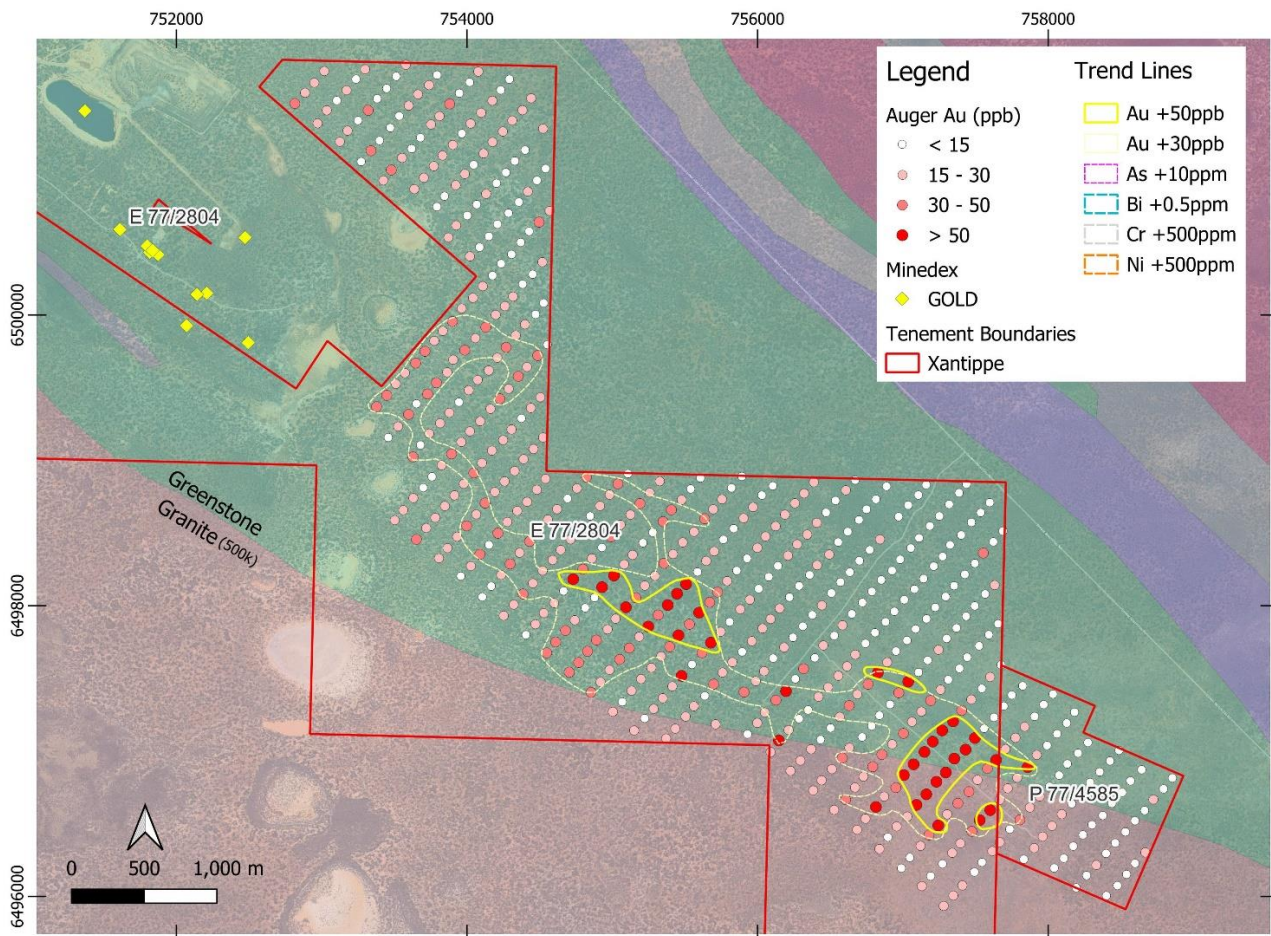


Figure 1 – Auger soil results for Gold showing trend lines above 30ppb and 50ppb Au.



ASX ANNOUNCEMENT

18 September 2024

For personal use only

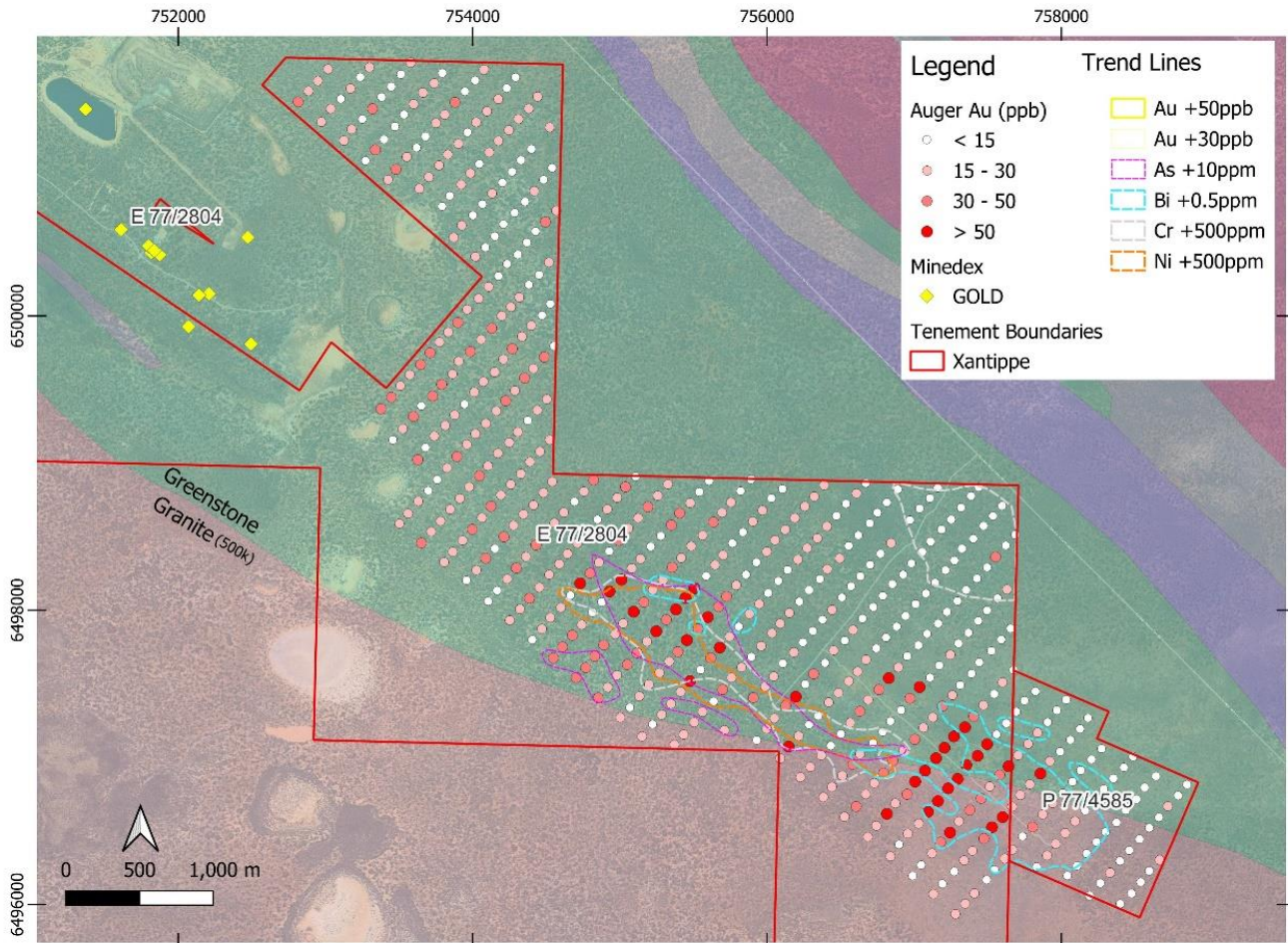


Figure 2 – Auger soil results for Gold with pathfinder trend lines.



ASX ANNOUNCEMENT

18 September 2024

For personal use only

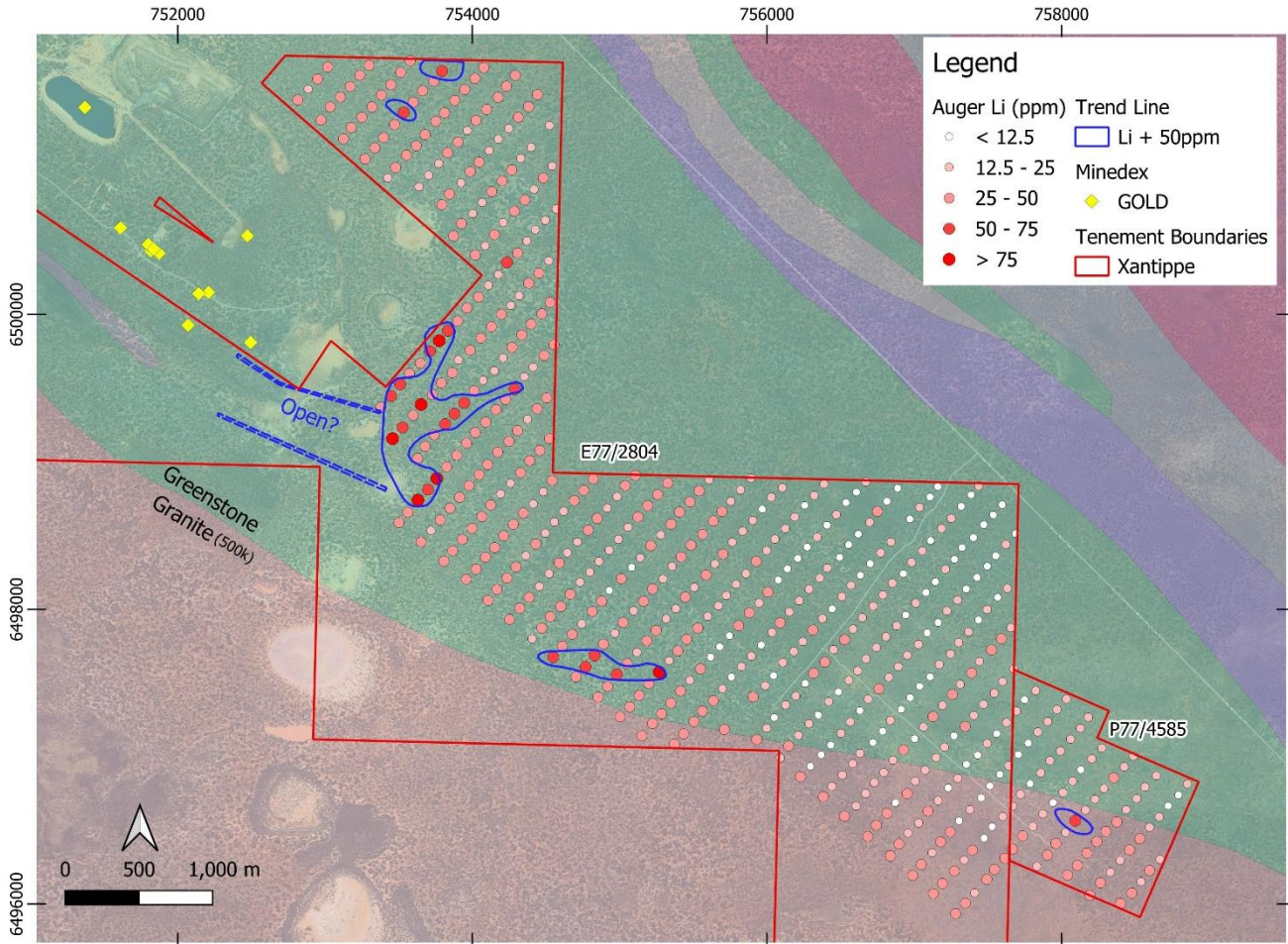


Figure 3 – Auger soil results for Lithium showing trend lines over 50 ppm Li.



ASX ANNOUNCEMENT

18 September 2024



Figure 4 – Auger rig at Southern Cross Project

For personal use only



ASX ANNOUNCEMENT

18 September 2024

For personal use only

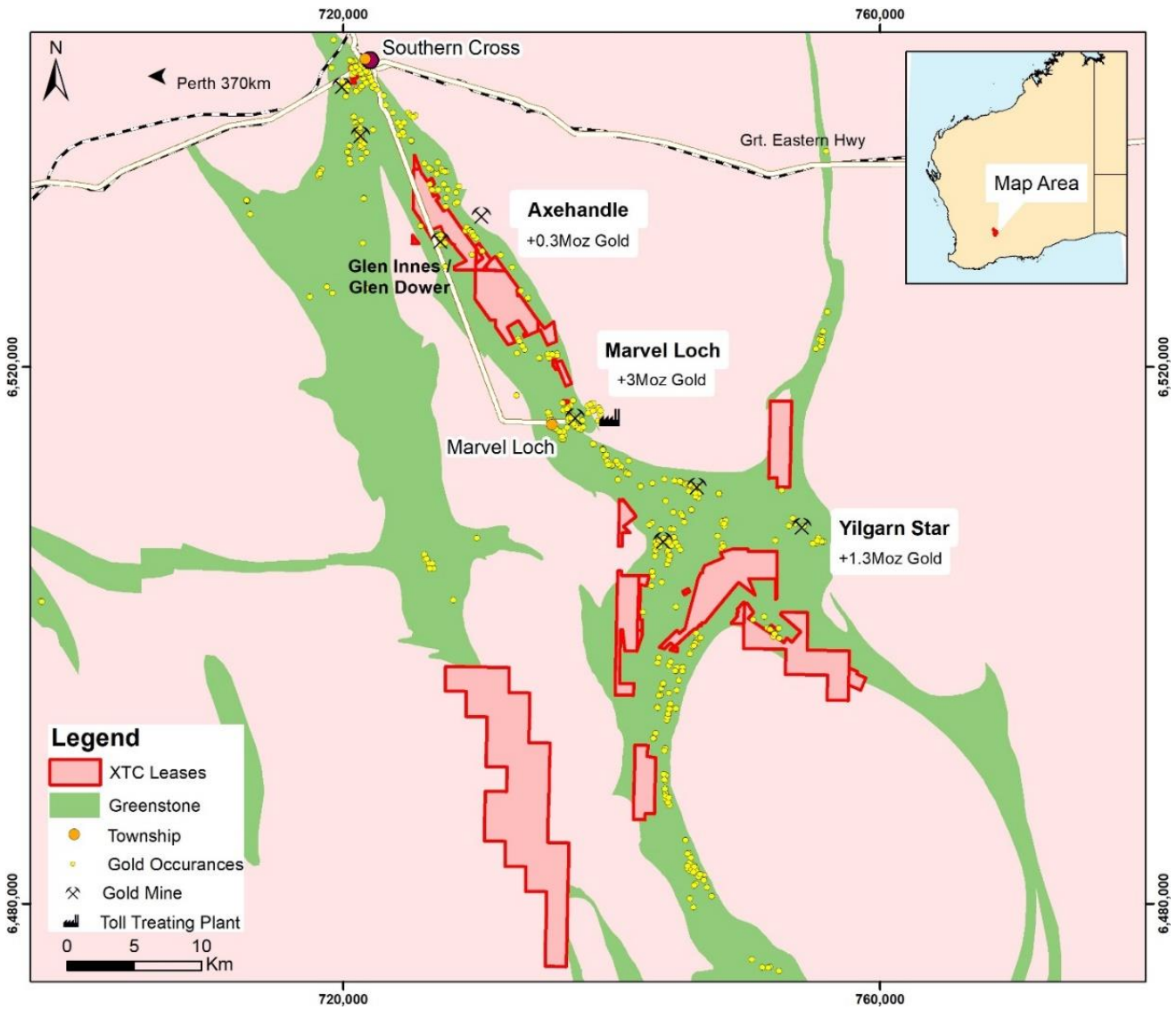


Figure 5 – Southern Cross project location and tenement package

ASX ANNOUNCEMENT

18 September 2024

Table 1- results

Sample ID	Easting	Northing	Elevation	Depth	As	Au (ppb)	Bi	Cr	Cs	Li	Nb	Ni	Ta
XR00476	757438	6498836	396.3	1	3.6	14.4	0.097	707	1.11	14.2	0.17	159	0.002
XR00477	757387	6498776	376.5	1	3.1	6.7	0.062	759	0.82	8.02	0.16	361	0.002
XR00478	757319	6498697	377.4	1	2.6	5.2	0.065	646	1.3	9.94	0.17	155	0.002
XR00479	757252	6498616	382.3	1	2.2	5.3	0.066	879	1.5	13.4	0.21	269	0.005
XR00480	757186	6498548	381.2	1	2.3	1.5	0.154	1390	1.29	13.1	0.21	229	0.001
XR00481	757112	6498466	378	1	2.3	2.9	0.099	532	0.76	11.1	0.14	193	0.001
XR00482	757055	6498396	372.7	1	3.8	7.6	0.154	531	1.37	17	0.18	322	0.003
XR00483	756982	6498318	373.8	1	6.2	9.3	0.164	335	1.41	14.4	0.26	188	0.002
XR00484	756926	6498241	365.8	1	4.4	8.3	0.088	411	0.62	10.8	0.16	166	0.001
XR00485	756852	6498177	366.2	1	3.6	3.5	0.192	760	1.64	18.2	0.19	330	0.003
XR00486	756787	6498097	362	1	4.4	8.3	0.133	425	1.02	13.1	0.22	211	0.003
XR00487	756722	6498021	363.7	1	4.4	5.4	0.197	622	1.67	21.6	0.22	304	0.003
XR00488	756649	6497943	362.4	1	4.7	8.9	0.129	485	1.15	17.1	0.13	238	0.002
XR00489	756585	6497865	362	1	4.5	16.2	0.111	427	0.9	12.7	0.2	177	0.002
XR00490	756528	6497793	368.4	1	4.6	9	0.228	494	1.81	29.5	0.22	181	0.002
XR00491	756453	6497726	364.4	1	5.4	20.6	0.241	309	1.41	20.2	0.21	130	0.004
XR00492	756394	6497641	371.9	1	7.5	15	0.362	730	2.16	47.8	0.34	185	0.008
XR00493	756317	6497566	364.9	0.5	3.5	41.7	0.182	447	1.7	30.5	0.16	143	0.003
XR00494	756260	6497496	360.2	1.5	2.6	3.9	0.075	381	1.29	3.72	0.08	114	0.001
XR00495	756196	6497411	357.6	1	4.8	63.1	0.145	244	2.36	16.4	0.2	160	0.002
XR00496	756127	6497350	359.6	1	12.3	40.4	0.362	457	2.58	14.9	0.16	1190	0.002
XR00497	756050	6497265	357.3	1	11	20	0.15	1410	1.3	11.3	0.19	756	0.001
XR00498	755998	6497193	357.8	1	8.9	18.1	0.163	450	1.34	19.5	0.24	305	0.002
XR00499	755931	6497116	355.2	1	6.6	13.4	0.224	449	2.09	25.4	0.28	381	0.002
XR00502	758669	6496302	355.8	1	6.7	19.2	0.2	412	1.11	21.5	0.11	107	0.003
XR00503	758598	6496227	368.8	1	5.4	8.5	0.318	537	1.97	28.6	0.19	188	0.004
XR00504	758540	6496151	366.6	1	4.8	11.5	0.218	418	1.18	23	0.22	144	0.002
XR00505	758477	6496074	365.4	1	4.2	12	0.355	491	1.97	27.4	0.11	209	0.004
XR00506	758401	6496004	358.6	1	4.6	13.1	0.35	495	1.91	32	0.22	191	0.003
XR00507	758193	6496059	366.7	1	4.7	8.4	0.308	424	1.67	28.7	0.18	176	0.003
XR00508	758265	6496144	365.2	1	4.2	14.3	0.366	576	1.61	27	0.19	233	0.004
XR00509	758332	6496215	362.4	1	5.9	19.3	0.324	470	1.74	24.7	0.19	234	0.003
XR00510	758399	6496295	368.5	1	4.8	10.5	0.274	406	1.59	22.6	0.18	219	0.002
XR00511	758462	6496367	363.7	1	4.3	11.1	0.327	580	2.12	30.1	0.17	278	0.003
XR00512	758532	6496443	367.2	1	4.9	13	0.337	617	1.67	28	0.25	222	0.004
XR00513	758598	6496520	369.1	1	6.4	10.4	0.318	665	1.95	25	0.34	284	0.022
XR00514	758664	6496591	367.5	1.5	3.9	10	0.311	745	2.21	22.5	0.17	286	0.004
XR00515	758725	6496666	371.3	1.5	2.7	17.4	0.174	1260	0.47	6.87	0.24	175	0.003
XR00516	758794	6496739	371.5	1	3.4	9	0.137	625	0.95	12.3	0.22	328	0.004
XR00517	758855	6496814	371.9	1	3.4	12.5	0.112	480	0.85	14.8	0.24	213	0.005
XR00518	758644	6496871	369	1	4.2	10.2	0.146	468	1.01	15.6	0.2	295	0.003

For personal use only

ASX ANNOUNCEMENT

18 September 2024

Sample ID	Easting	Northing	Elevation	Depth	As	Au (ppb)	Bi	Cr	Cs	Li	Nb	Ni	Ta
XR00519	758567	6496794	370.2	1	3.9	7.7	0.26	462	1.38	17.4	0.2	244	0.002
XR00520	758511	6496715	370.6	1	3.6	10.2	0.295	660	1.6	22.7	0.3	329	0.003
XR00521	758439	6496640	373.5	1	3.6	8.1	0.304	686	1.75	24.5	0.22	291	0.002
XR00522	758376	6496556	365	1	3.6	7.3	0.463	523	1.99	26.2	0.25	265	0.006
XR00523	758302	6496492	364.4	1	5.4	5.4	0.917	468	3.02	28.7	0.31	178	0.002
XR00524	758240	6496423	364	1	4.3	8.2	0.762	359	1.9	26.9	0.3	137	0.004
XR00525	758173	6496345	358.8	1	5	13.7	0.901	431	2.19	36.4	0.38	177	0.004
XR00526	758108	6496262	363.8	1	4.9	14.5	0.638	392	2.04	29	0.27	189	0.003
XR00527	758042	6496195	361.2	1	6	13.9	0.414	244	1.61	25.3	0.26	169	0.005
XR00528	757833	6496255	361.6	1	5	13.7	0.604	193	1.83	24.8	0.26	162	0.012
XR00529	757904	6496332	364.2	1	6.8	24.9	0.768	191	2.14	25.3	0.33	154	0.005
XR00530	757963	6496411	362.7	1	4.8	16.6	0.835	223	2.34	27.6	0.27	165	0.008
XR00531	758027	6496485	363.5	1	4.6	18.9	0.653	174	1.64	20.2	0.26	98	0.006
XR00532	758094	6496565	366.2	0.5	7.1	29.9	2.26	483	3.14	57.9	0.5	182	0.008
XR00533	758163	6496637	369	0.5	6.5	8.4	3.1	911	2.59	22.9	0.45	112	0.015
XR00534	758227	6496710	371.5	1	4.4	22	1.03	81	3.88	12.8	0.37	76.4	0.002
XR00535	758289	6496783	369.4	1	4.2	9.5	0.661	162	2.31	14.1	0.22	104	0.003
XR00536	758355	6496856	373.1	1.5	4.2	7.2	0.363	675	3.14	27.1	0.23	415	0.004
XR00537	758426	6496931	371.6	1	2.9	4.7	0.13	300	0.8	12.6	0.16	184	0.003
XR00538	758488	6497004	375.3	1.5	2.8	3	0.141	419	1.22	18.1	0.19	260	0.003
XR00539	758274	6497058	372.3	1	3.5	3.3	0.294	557	2.73	23.7	0.4	450	0.005
XR00540	758206	6496985	374.1	0.5	4.5	3.1	0.425	709	3.61	22.4	0.5	600	0.002
XR00541	758132	6496911	374.9	1.5	5.2	8.8	1.09	155	1.98	11.7	0.51	112	0.002
XR00542	758076	6496833	373.3	1.5	3.3	7.2	0.368	85	2.32	20.1	0.18	89.8	0.005
XR00543	758010	6496756	371.3	1.5	10.3	10.4	5.83	105	2.23	16.3	0.8	67.5	0.027
XR00544	757942	6496687	371.5	1	6.6	16	2.07	111	1.86	8.7	1.06	42.3	0.008
XR00545	757874	6496611	368.7	1.5	5	15.6	0.877	344	1.1	15.8	0.39	99.1	0.003
XR00546	757806	6496526	364.5	1.5	4.4	30.6	1.41	223	8.11	16.5	0.52	92.3	0.004
XR00547	757736	6496462	364.3	1.5	3.5	8.7	1.75	361	3.9	31.7	0.41	181	0.004
XR00548	757667	6496372	359.3	1.5	4.8	26.6	1.12	292	2.49	27	0.25	143	0.009
XR00549	757616	6496311	359	1	4.1	15.1	0.971	270	1.83	27.6	0.22	150	0.01
XR00552	757545	6496234	360.8	1.5	4.6	13.9	0.647	274	1.83	25.1	0.24	124	0.004
XR00553	757493	6496167	365.9	1.5	4.6	10.7	0.482	345	2.08	31.1	0.21	130	0.006
XR00554	757410	6496075	361.7	1.5	4.7	18.8	0.354	315	1.45	24.7	0.21	108	0.004
XR00555	757348	6496005	361.4	1.5	5.4	16.4	0.384	356	1.78	26.8	0.18	129	0.004
XR00556	757281	6495934	362.3	1.5	7.7	18.8	0.411	393	2.32	34.1	0.17	140	0.004
XR00557	757131	6496070	364.3	1.5	6.1	17.4	0.599	417	2.76	30.2	0.23	146	0.009
XR00558	757192	6496139	359.1	1.5	6.6	8.2	0.437	437	2.43	35.9	0.16	178	0.005
XR00559	757273	6496223	359.4	1.5	5.6	9.5	0.464	385	2.03	27.4	0.22	152	0.007
XR00560	757340	6496299	347.4	1.5	3.9	19.8	0.395	229	1.1	18.2	0.25	93.4	0.004
XR00561	757396	6496364	360.6	1.5	4.8	24	0.546	278	1.48	27.4	0.25	138	0.007
XR00562	757475	6496447	350.8	1.5	4.1	43.9	0.335	194	0.62	11.3	0.29	71.6	0.003
XR00563	757529	6496524	362.4	1.5	2.4	58.1	0.752	810	0.9	9.74	0.28	156	0.003

For personal use only

ASX ANNOUNCEMENT

18 September 2024

Sample ID	Easting	Northing	Elevation	Depth	As	Au (ppb)	Bi	Cr	Cs	Li	Nb	Ni	Ta
XR00564	757602	6496593	366.6	1.5	6.3	55.8	1.04	174	1.53	13.2	0.33	84.4	0.003
XR00565	757667	6496664	364.7	1.5	5.6	20.3	2.86	419	2.62	23	0.65	122	0.008
XR00566	757722	6496743	362.9	1.5	3.4	16.6	2.26	216	3.65	19.7	0.35	110	0.009
XR00567	757787	6496816	371.6	1	5.1	26.3	1.08	156	1.29	9.47	0.35	70.7	0.002
XR00568	757859	6496889	368.6	1.5	14.9	53	0.638	180	2.17	20.8	0.23	109	0.005
XR00569	757922	6496973	368.7	1.5	4.5	22.7	0.398	275	3.22	13	0.22	102	0.002
XR00570	757993	6497038	368.3	1.5	3.5	14.7	0.355	342	1.13	13.5	0.22	230	0.002
XR00571	758062	6497118	369.4	1	3.5	3.5	0.329	1620	2.55	21.2	0.28	626	0.003
XR00572	758128	6497192	370.3	1	4.1	4.3	0.281	1420	1.86	21.1	0.24	542	0.003
XR00573	758182	6497267	369.8	1.5	4.4	10.9	0.081	490	0.58	13.8	0.14	181	0.002
XR00574	758034	6497391	371.6	1.5	5.6	13.4	0.12	636	0.98	13.4	0.13	232	0.001
XR00575	757970	6497319	372.4	1.5	2.4	10.2	0.138	754	1.69	13.6	0.19	290	0.002
XR00576	757907	6497238	376.2	1.5	2.4	2.1	0.205	1160	1.36	19.5	0.19	411	0.001
XR00577	757839	6497167	370.7	1.5	5.5	15.1	0.615	1120	0.85	20.4	0.19	234	0.001
XR00578	757775	6497091	373.9	1.5	5	20.6	0.34	264	2.1	11.3	0.49	80.1	X
XR00579	757707	6497013	372.4	1.5	3.6	17.7	1.03	74	0.98	5.07	0.24	55.2	X
XR00580	757642	6496938	369.9	1.5	2.8	155	2.24	150	4.07	15.5	0.47	92.3	0.004
XR00581	757582	6496879	414.6	1.5	5.4	38	0.707	139	1.14	6.56	0.26	60.9	0.001
XR00582	757514	6496801	366.4	1.5	5.1	25	0.391	195	1.17	7.57	0.26	90.6	0.002
XR00583	757455	6496720	362.7	1.5	6.5	36.2	0.75	439	0.77	11.3	0.23	333	0.002
XR00584	757379	6496640	362.4	1.5	4.6	31.7	1.34	372	1.4	17.7	0.56	238	0.003
XR00585	757305	6496564	357.7	1.5	4.1	24.2	0.667	368	0.91	9.6	0.36	168	0.004
XR00586	757244	6496488	359	1.5	5.6	69.1	0.672	359	1.82	27.7	0.26	191	0.002
XR00587	757180	6496422	355	1.5	5.9	47.1	0.542	336	2	28.1	0.24	202	0.005
XR00588	757122	6496347	356.5	1.5	4.3	17.5	0.36	294	1.33	23.6	0.22	117	0.002
XR00589	757048	6496267	357.6	1.5	6.3	14.6	0.5	467	2.5	34.1	0.15	182	0.003
XR00590	756990	6496194	356.1	1.5	5.9	10	0.43	402	2.41	33	0.17	172	0.003
XR00591	756839	6496326	356.4	1.5	7.1	18.5	0.531	568	2.76	39.4	0.17	199	0.004
XR00592	756897	6496407	358.3	1.5	4.8	13.7	0.356	355	1.67	28.1	0.25	130	0.003
XR00593	756958	6496481	354.9	1.5	4.4	18.5	0.403	237	1.6	19.4	0.22	151	0.002
XR00594	757031	6496549	357.8	1.5	4.9	23.5	0.417	374	1.28	24.6	0.25	154	0.002
XR00595	757094	6496629	356.8	1.5	8.6	98.8	0.763	628	2.98	39.8	0.36	303	0.008
XR00596	757162	6496702	358.8	1.5	7.5	65.6	0.356	275	1.2	15.1	0.31	168	0.002
XR00597	757231	6496788	361.9	1.5	4.5	80.3	0.871	2100	0.68	8.57	0.29	674	0.003
XR00598	757296	6496852	361	1.5	5.2	61	0.475	241	1.46	14.5	0.28	96.4	0.001
XR00599	757354	6496947	367.8	1.5	8.2	110.1	2.15	233	1.08	9.1	0.54	76.5	0.005
XR00602	757432	6497009	366.2	1.5	6.7	159	1.76	112	1.95	7.03	0.42	36.2	0.003
XR00603	757496	6497089	377.2	1.5	3.5	51.4	1.47	169	1.76	12.6	0.26	63.7	0.002
XR00604	757560	6497155	377.8	1.5	6.5	9.7	0.151	129	1.71	5.88	0.1	148	0.001
XR00605	757627	6497231	371	1.5	4.6	11.2	0.588	938	1.33	15	0.12	195	0.001
XR00606	757695	6497309	369.5	1.5	4.3	11.7	0.436	599	1.79	17.2	0.3	209	0.002
XR00607	757750	6497385	371.4	1.5	5.9	9.3	0.154	750	1.04	9.4	0.11	222	0.001
XR00608	757825	6497448	368.3	1	4.8	9.4	0.242	539	1.06	13.6	0.23	176	0.003

For personal use only

ASX ANNOUNCEMENT

18 September 2024

Sample ID	Easting	Northing	Elevation	Depth	As	Au (ppb)	Bi	Cr	Cs	Li	Nb	Ni	Ta
XR00609	757676	6497593	372.6	1.5	4.8	13.3	0.281	361	1.27	21.6	0.26	158	0.003
XR00610	757601	6497509	374.1	1.5	6.1	15.1	0.529	466	1.91	22.4	0.33	231	0.005
XR00611	757544	6497430	370.1	1.5	5.1	11	0.426	525	2.08	21	0.31	282	0.003
XR00612	757471	6497354	371.3	1	7.3	17.2	0.287	307	1.41	21.5	0.22	212	0.003
XR00613	757405	6497279	370	1	12.6	43	0.738	375	2.16	24.6	0.1	179	0.005
XR00614	757346	6497204	374.8	1	9	437.2	0.909	383	1.46	33.1	0.23	123	0.006
XR00615	757271	6497141	370.7	1.5	3.1	148.7	0.255	179	1.06	11	0.19	65	X
XR00616	757206	6497064	367	1	3	128.8	0.323	257	1.44	20.5	0.31	95	0.002
XR00617	757149	6496993	363.9	1	3.1	50.2	0.212	267	1.62	14.8	0.2	104	0.002
XR00618	757074	6496908	361.3	1.5	7.7	77.2	0.658	448	1.62	24	0.21	306	0.005
XR00619	757007	6496834	359.9	1.5	8	59.2	0.308	341	1.38	22.5	0.18	178	0.003
XR00620	756952	6496748	357.9	1.5	6.6	35.4	0.488	696	2.64	40.7	0.22	465	0.005
XR00621	756872	6496686	357	1.5	3.7	27.8	0.242	220	1.03	12.2	0.17	152	0.008
XR00622	756815	6496615	357.5	1.5	8.1	88.6	0.463	398	2.27	32.4	0.11	272	0.004
XR00623	756743	6496534	355.6	1.5	5.9	27.6	0.368	337	2.1	34.1	0.16	219	0.007
XR00624	756685	6496458	353.4	1.5	6.5	16.1	0.409	342	2.17	31.4	0.11	158	0.009
XR00625	756527	6496595	356.2	1.5	5.5	16.3	0.357	356	2.19	38.8	0.16	214	0.011
XR00626	756606	6496665	346.9	1.5	5.8	34	0.29	295	1.43	22.7	0.13	238	0.007
XR00627	756671	6496749	357.8	1.5	4.9	19.7	0.316	288	1.01	16.5	0.19	149	0.003
XR00628	756729	6496824	360.3	1.5	5.1	28.4	0.293	353	1.18	17.5	0.23	194	0.003
XR00629	756793	6496892	365	1	4.5	33.8	0.523	874	2.47	24.2	0.26	543	0.013
XR00630	756856	6496976	363	1.5	9.5	31	0.56	195	1.07	12.8	0.55	127	0.004
XR00631	756927	6497046	364.8	1.5	10.1	18.6	0.29	703	1.58	33.5	0.2	250	0.004
XR00632	757004	6497121	364.7	1.5	6.1	36.5	0.139	178	0.83	10.6	0.1	90.7	0.002
XR00633	757063	6497201	364.9	1.5	6.2	20.2	0.169	197	0.81	16.5	0.16	72.2	0.003
XR00634	757128	6497271	379.1	1.5	4.3	18.2	0.281	206	1.12	33	0.12	132	0.005
XR00635	757192	6497347	373.7	1	2.3	47.1	0.605	89	1.02	17.1	0.43	46.8	0.003
XR00636	757260	6497422	378.7	1	7	18.8	0.458	318	2.29	40.2	0.19	153	0.006
XR00637	757313	6497490	373.6	1	7.6	9.5	0.21	242	0.92	21.9	0.23	145	0.004
XR00638	757390	6497568	370.8	1	7.1	9.9	0.443	776	2.68	48	0.19	361	0.005
XR00639	757443	6497645	372	1.5	4	6.1	0.141	333	0.93	16.4	0.19	114	0.002
XR00640	757525	6497723	371.2	1.5	5.1	10.3	0.154	295	1.29	25.7	0.16	127	0.003
XR00641	757592	6497800	370	1.5	5.7	12	0.232	551	2.24	40.5	0.18	224	0.005
XR00642	757656	6497875	366.4	1.5	3.2	4.7	0.169	636	1.8	21.8	0.13	248	0.003
XR00643	757632	6498141	372.6	1.5	5	19	0.045	433	0.46	14.3	0.11	158	0.001
XR00644	757567	6498080	376	1.5	4.3	10.6	0.058	374	0.63	11.8	0.13	127	0.001
XR00645	757495	6497998	375.1	1	3.3	2.7	0.184	1230	1.97	24.8	0.22	400	0.002
XR00646	757436	6497927	371.3	1	2.4	10.9	0.061	763	0.88	9.23	0.11	158	X
XR00647	757369	6497846	372.9	1	3.9	4.7	0.2	749	2.81	24.9	0.24	264	0.003
XR00648	757302	6497774	369.2	1	4.7	7.7	0.14	607	2.04	17.3	0.17	252	0.001
XR00649	757246	6497696	368.7	1.5	4.6	18	0.152	465	1.96	20.3	0.14	151	0.002
XR00652	757171	6497624	368.2	1.5	3.8	13.5	0.119	269	1.11	14.7	0.23	94.1	0.003
XR00653	757108	6497541	369.8	1.5	4.5	13.5	0.119	174	1	11.2	0.17	70.7	0.002

For personal use only

ASX ANNOUNCEMENT

18 September 2024

Sample ID	Easting	Northing	Elevation	Depth	As	Au (ppb)	Bi	Cr	Cs	Li	Nb	Ni	Ta
XR00654	757037	6497477	369.9	1.5	3.8	55.4	0.159	153	1.27	11.7	0.14	66.8	0.002
XR00655	756972	6497400	374.7	1.5	4.1	43	0.081	129	0.9	10.8	0.11	46.8	X
XR00656	756912	6497320	368.1	1.5	3.6	12.9	0.072	508	0.5	6.58	0.07	76.1	X
XR00657	756839	6497245	361.9	1.5	5.4	12.2	0.142	254	1.37	15.7	0.13	98.4	0.001
XR00658	756786	6497172	364.5	1.5	3.8	8.9	0.114	738	0.88	7.29	0.03	214	0.001
XR00659	756720	6497096	364.4	1.5	3.7	13	0.114	1050	0.82	8.32	0.12	639	X
XR00660	756632	6497022	362.6	1.5	82.4	16.8	1.19	1440	1.43	12.8	0.4	560	0.002
XR00661	756583	6496952	359.1	1.5	7.7	38.1	0.344	792	2.16	18.9	0.15	366	0.002
XR00662	756512	6496875	363.7	1	5.8	24.8	0.324	662	2.81	23.9	0.2	378	0.002
XR00663	756441	6496798	362.1	1.5	5.5	20.5	0.17	423	1.64	19	0.15	223	0.003
XR00664	756383	6496728	357.2	1.5	6.6	22.2	0.218	485	2.42	32.2	0.13	301	0.002
XR00665	756227	6496863	357.1	1.5	6.7	28.1	0.149	409	1.83	25.2	0.16	236	0.002
XR00666	756295	6496934	352.6	1.5	5.1	28.1	0.072	259	0.66	9.79	0.15	118	0.001
XR00667	756369	6497012	365.3	1.5	5.7	25.7	0.076	351	0.76	7.72	0.16	154	0.001
XR00668	756434	6497078	363.8	1.5	17.9	15	0.09	826	0.85	10.7	0.2	718	0.002
XR00669	756503	6497158	362.9	1.5	4.6	10.1	0.165	604	2.01	21.6	0.14	382	0.001
XR00670	756566	6497235	365.2	1.5	6.9	19.5	0.072	207	1.56	14.6	0.12	101	0.001
XR00671	756631	6497312	368.9	1.5	2.8	34.9	0.044	112	1.41	9.39	0.05	83.1	X
XR00672	756687	6497390	365.8	1.5	4.8	16.3	0.128	270	1.65	12.7	0.08	135	0.002
XR00673	756761	6497460	373.4	1.5	5.1	30.9	0.109	194	1.11	26.2	0.16	89.6	0.002
XR00674	756828	6497538	368.3	1.5	3.6	56.6	0.141	226	1.75	21.4	0.11	104	0.002
XR00675	756892	6497610	365.5	1.5	5.1	22.7	0.128	259	1.3	16.4	0.15	90.2	0.003
XR00676	756953	6497687	369.2	1.5	5.2	13.2	0.148	625	2.03	22.4	0.13	178	0.003
XR00677	757029	6497761	371.7	1.5	3.9	7.4	0.132	753	1.43	15.2	0.1	210	0.001
XR00678	757088	6497839	376	1.5	2.3	13.3	0.12	1000	1.21	11.8	0.15	174	0.002
XR00679	757163	6497909	371.4	1	2.6	6.4	0.142	1080	1.29	10	0.1	242	X
XR00680	757223	6497988	369.4	1	3.2	2.7	0.099	1140	0.79	12.9	0.13	267	0.001
XR00681	757295	6498062	369.9	1	2.5	3.1	0.098	460	0.72	13.4	0.21	198	0.001
XR00682	757353	6498137	375.4	1.5	5.5	5.1	0.036	595	0.32	8.07	0.17	159	X
XR00683	757427	6498215	376.3	1	2.2	6.6	0.055	381	0.46	4.71	0.28	159	X
XR00684	757496	6498291	376.7	1.5	3.3	6.5	0.048	1350	0.42	10.6	0.16	387	X
XR00685	757554	6498362	379.4	0.5	3.1	37.3	0.065	524	0.82	8.79	0.33	207	0.002
XR00686	757623	6498439	380.5	1	3.4	8.2	0.106	891	1.05	14.5	0.22	215	0.002
XR00687	757689	6498513	381.2	1.5	2	1.6	0.097	1320	0.72	6.99	0.2	208	X
XR00688	757598	6498709	384.8	1	3.5	4	0.074	855	0.7	4.93	0.18	243	0.002
XR00689	757536	6498640	384.1	1.5	2.7	4.5	0.074	1150	0.94	12.3	0.2	296	0.001
XR00690	757472	6498573	385.2	1.5	1.8	1.2	0.058	1210	0.36	5.62	0.1	112	X
XR00691	757402	6498486	382.9	1.5	2.8	4.8	0.065	1130	0.59	5.97	0.21	626	0.003
XR00692	757325	6498418	376.8	1.5	2.9	5	0.036	1180	0.49	8.34	0.17	355	0.001
XR00693	757274	6498338	374	1.5	2.8	5.3	0.071	1220	0.72	9.66	0.29	417	0.001
XR00694	757213	6498271	376.5	1.5	2.3	2.4	0.089	849	0.82	14	0.17	274	0.001
XR00695	757143	6498186	371.7	1.5	5.2	5.2	0.053	775	0.41	11.2	0.18	293	X
XR00696	757080	6498113	369.5	1.5	3.5	4.5	0.071	477	0.66	10.5	0.21	264	0.002

For personal use only

ASX ANNOUNCEMENT

18 September 2024

Sample ID	Easting	Northing	Elevation	Depth	As	Au (ppb)	Bi	Cr	Cs	Li	Nb	Ni	Ta
XR00697	757010	6498041	367.4	1.5	3.9	6.7	0.124	640	1.2	16.1	0.37	243	0.002
XR00698	756942	6497960	371.3	1.5	3.5	4.6	0.094	485	0.7	6.38	0.23	227	0.001
XR00699	756881	6497888	364.1	1	5	6.1	0.141	582	1.33	13.4	0.32	249	0.003
XR00702	756809	6497814	366	1.5	5.1	7.2	0.178	788	1.53	22.2	0.46	239	0.002
XR00703	756743	6497740	364	1.5	5.1	3.4	0.244	772	1.33	20.6	0.35	274	0.002
XR00704	756673	6497663	359.5	1.5	4.5	19.1	0.106	217	0.92	14.1	0.35	75.2	0.004
XR00705	756616	6497582	367.5	1.5	4.7	24.7	0.116	187	0.88	18.1	0.26	62.2	0.001
XR00706	756556	6497517	361.9	1.5	8.2	18.7	0.137	197	1.27	16.2	0.3	79.2	0.002
XR00707	756486	6497438	364.6	1.5	5.1	18.9	0.072	226	0.98	8.15	0.28	65.6	0.002
XR00708	756420	6497373	361.6	0.5	6	18.1	0.076	186	1.03	13.8	0.26	85.9	X
XR00709	756348	6497282	361.9	1.5	9.2	14.2	0.188	2420	0.3	8.18	0.38	1170	X
XR00710	756286	6497222	359.2	1.5	75	10.5	0.274	1420	0.92	13.2	0.35	1880	0.001
XR00711	756214	6497144	356.1	1	15.2	26	0.108	607	1.46	17.6	0.36	716	X
XR00712	756147	6497072	355.5	1.5	12.4	69.6	0.224	1020	1.73	25.2	0.34	386	0.002
XR00713	756090	6496992	357.5	1.5	6	19.9	0.119	322	1.12	18.1	0.46	176	0.002
XR00714	755711	6497184	351.6	1	11.4	22.5	0.309	483	2.76	39.3	0.29	425	0.002
XR00717	755907	6497405	355.3	1	23	45.7	0.25	604	5.19	40.9	0.34	438	0.002
XR00718	755988	6497481	363.2	1	12.5	26.7	0.362	1000	2.92	20.9	0.28	144	X
XR00719	756045	6497549	361.9	1.5	6.6	15.3	0.07	123	0.51	8.65	0.34	52	X
XR00720	756108	6497638	365.4	1.5	4.4	9.9	0.167	386	1.65	16.8	0.17	112	0.001
XR00721	756183	6497713	367.2	1.5	3.3	15.9	0.1	164	0.76	13.2	0.16	49	0.001
XR00722	756244	6497781	365.6	1.5	4.6	10.5	0.193	300	1.19	19.5	0.32	87.2	0.003
XR00723	756312	6497858	363.3	1.5	4.8	11.6	0.264	564	1.56	30.3	0.4	137	0.003
XR00724	756377	6497936	365	1.5	4.2	12.9	0.158	480	1.35	21.2	0.24	148	0.001
XR00725	756443	6498002	365.5	1.5	4.6	27.9	0.066	272	0.45	9.56	0.19	126	X
XR00726	756509	6498086	364.9	1.5	3.5	7.1	0.131	454	1.12	17.9	0.29	238	0.001
XR00727	756571	6498162	366.7	1.5	5.1	12.3	0.049	351	0.54	14.3	0.26	147	X
XR00728	756635	6498230	364.8	1.5	4.6	10.6	0.098	538	0.84	10	0.24	244	0.001
XR00729	756701	6498309	369.7	1.5	4.8	11.2	0.061	479	0.62	9.87	0.27	175	0.001
XR00730	756772	6498383	375.7	1.5	3.3	3.3	0.161	487	1.24	18.1	0.34	208	0.002
XR00731	756843	6498456	379.4	0.5	6	18.8	0.077	248	0.82	13.2	0.33	128	0.002
XR00733	756971	6498612	385.8	1.5	6.3	4.7	0.065	558	0.69	11	0.23	204	X
XR00734	757037	6498691	386.4	1.5	3.1	4	0.061	1340	0.4	15	0.22	317	X
XR00735	757107	6498761	384.7	1.5	2.9	8.1	0.04	886	0.47	6.21	0.18	408	X
XR00736	757161	6498831	385.1	1	2	6.2	0.032	437	0.54	4.93	0.24	131	X
XR00737	756888	6498821	384.8	1	4.3	6.2	0.025	525	0.22	7.31	0.16	290	X
XR00738	756815	6498732	391.5	0.5	6.7	8	0.067	173	0.64	8.56	0.3	143	0.001
XR00739	756750	6498663	391.8	0.5	6.1	3.1	0.451	750	3.32	31.2	0.93	301	0.009
XR00740	756698	6498590	391.1	1.5	4.8	12.2	0.202	345	1.52	16.3	0.4	204	0.001
XR00741	756621	6498509	376.4	1.5	2.8	10.2	0.143	243	0.85	8.2	0.29	146	0.001
XR00742	756555	6498437	369.3	1.5	7.6	12.3	0.078	472	0.8	10.1	0.24	242	X
XR00743	756494	6498352	369.9	1.5	12.5	18.9	0.062	1180	0.67	9.79	0.19	480	X
XR00744	756410	6498279	368.7	1.5	7.9	18.7	0.141	594	1.39	17.2	0.33	345	0.002

For personal use only

ASX ANNOUNCEMENT

18 September 2024

Sample ID	Easting	Northing	Elevation	Depth	As	Au (ppb)	Bi	Cr	Cs	Li	Nb	Ni	Ta
XR00745	756359	6498211	363	1.5	4.4	8.5	0.118	424	0.95	12.7	0.25	196	0.001
XR00746	756286	6498136	362.3	1.5	4.2	5.2	0.229	462	2.07	24.7	0.33	313	0.002
XR00747	756220	6498058	367.1	1.5	3.5	11.3	0.135	347	1.08	14.7	0.27	120	0.002
XR00748	756152	6497981	367	1.5	7.4	17.4	0.235	487	1.55	23.6	0.28	171	0.012
XR00749	756090	6497908	366.2	1.5	7.2	21.1	0.24	539	1.55	31.1	0.32	142	0.004
XR00752	756034	6497843	368.8	1.5	10	22.7	0.186	319	1.71	18.8	0.2	98.5	0.003
XR00753	755961	6497756	366.1	1.5	7.6	25.3	0.07	156	0.76	9.21	0.17	49.1	X
XR00754	755894	6497682	364.3	1.5	7.2	13.3	0.143	205	1.44	17	0.22	80.3	0.001
XR00755	755827	6497611	363.8	1.5	17.1	20.7	0.361	822	1.54	13.8	0.23	343	0.002
XR00756	755759	6497540	360.6	1.5	45.2	19.1	0.547	1400	1.43	11.5	0.1	771	0.001
XR00757	755698	6497460	357.4	1.5	61.9	42	0.283	480	5.74	21.6	0.19	701	0.002
XR00758	755637	6497379	360.7	0.5	7.4	14.6	0.309	692	4.64	37.5	0.47	799	0.007
XR00759	755562	6497308	357.2	1.5	11.5	17.2	0.277	437	2.71	30.3	0.17	416	0.004
XR00760	755505	6497237	355.3	1.5	8.4	20.6	0.258	408	1.97	29.1	0.2	202	0.006
XR00761	755434	6497154	356	1.5	7.1	26.5	0.286	317	1.78	35.1	0.16	165	0.002
XR00762	755371	6497086	354.5	1.5	8.1	15.1	0.415	443	2.32	45.2	0.2	190	0.003
XR00763	755151	6497141	351.2	1.5	7.5	16.5	0.294	318	1.92	31.3	0.31	141	0.011
XR00764	755223	6497224	354.6	1.5	8.4	11.9	0.333	369	2.06	36.9	0.19	210	0.008
XR00765	755285	6497290	351.3	1.5	5.5	16.2	0.223	263	1.23	26.1	0.16	116	0.002
XR00766	755348	6497363	352	1.5	10.2	29.9	0.349	422	2.81	37.4	0.18	278	0.006
XR00767	755414	6497445	353.7	0.5	8.8	24.3	0.359	500	3.07	30.1	0.25	388	0.005
XR00768	755477	6497517	353.2	1	13	54.2	0.264	407	2.86	22.4	0.32	502	0.009
XR00769	755549	6497595	355	0.5	8.9	7.4	0.469	768	7.51	46.3	0.66	691	0.009
XR00770	755618	6497675	359.5	1.5	25.9	37	0.246	456	2.02	11.6	0.24	436	0.001
XR00771	755679	6497745	361.8	1.5	35.3	62.1	0.487	607	2.7	12	0.22	235	X
XR00772	755746	6497820	359.3	1.5	12.7	18.1	0.144	350	1.58	12.4	0.13	120	0.001
XR00773	755808	6497888	359.9	0.5	8.5	11.5	0.575	523	3.29	39.1	0.39	190	0.014
XR00774	755881	6497975	361.9	1.5	9.8	18.9	0.606	581	3.02	37.1	0.35	261	0.01
XR00775	755947	6498041	367.5	1.5	7.3	20.4	0.366	469	2.12	22.3	0.14	188	0.004
XR00776	756008	6498116	362.4	1.5	5.4	11.4	0.218	543	1.29	27	0.26	220	0.002
XR00777	756077	6498198	362.3	1.5	3.8	11.9	0.113	290	1.1	10.8	0.17	120	0.003
XR00778	756140	6498274	361.1	1.5	4.9	10.1	0.099	291	1.02	8.36	0.15	160	X
XR00779	756210	6498344	362.4	1.5	6.8	17.1	0.102	456	1.06	11.6	0.2	217	X
XR00780	756273	6498422	368.9	1.5	8	24.5	0.09	379	1.13	8.53	0.17	270	0.002
XR00781	756342	6498489	362.4	1.5	10.1	26.7	0.156	471	1.9	17.6	0.22	413	0.004
XR00782	756408	6498570	368.2	1.5	4.7	21	0.03	150	0.27	7.98	0.12	83.2	X
XR00783	756472	6498641	370.4	0.5	4.1	5.1	0.188	465	1.81	16.7	0.25	218	0.001
XR00784	756537	6498723	376.8	1.5	4.7	12	0.077	314	0.83	8.04	0.22	130	0.002
XR00785	756608	6498794	381	0.5	5.6	15.9	0.028	83	0.41	7.64	0.27	52.7	0.004
XR00786	756672	6498864	371.6	1	5	6.9	0.202	426	1.84	19.9	0.26	244	0.001
XR00787	756388	6498849	365.6	1.5	8	18.3	0.157	592	1.63	17.3	0.4	296	0.001
XR00788	756321	6498772	366.2	1.5	7.7	15.7	0.069	494	0.81	15	0.24	187	0.001
XR00789	756257	6498705	366.9	1.5	8.1	24.5	0.055	565	0.7	10.4	0.17	276	0.001

For personal use only

ASX ANNOUNCEMENT

18 September 2024

Sample ID	Easting	Northing	Elevation	Depth	As	Au (ppb)	Bi	Cr	Cs	Li	Nb	Ni	Ta
XR00790	756189	6498626	365.3	1.5	6.2	17.2	0.09	416	1.88	13.2	0.26	212	X
XR00791	756125	6498547	363.7	1.5	9.2	21.8	0.147	541	1.78	22	0.31	330	0.002
XR00792	756055	6498476	365.6	1.5	5.8	15.3	0.13	471	1.34	17.6	0.21	214	0.003
XR00793	755999	6498398	362.9	1.5	5.8	17.4	0.182	657	1.78	23.6	0.34	296	0.002
XR00794	755928	6498325	361.1	0.5	7.4	11.3	0.316	788	3.79	44.2	0.15	446	0.006
XR00795	755857	6498241	365	1.5	5.5	11.6	0.16	422	1.59	23.2	0.31	195	0.002
XR00796	755791	6498169	360.8	1.5	9.9	23.7	0.228	403	1.26	22.4	0.31	142	0.002
XR00797	755725	6498093	360.8	1.5	8.6	30.1	0.294	285	1.34	18.9	0.43	90.5	0.001
XR00798	755671	6498023	363.9	1.5	12.5	33.9	0.222	251	1.84	20.6	0.23	118	0.001
XR00799	755598	6497952	357.7	1.5	13	52.8	0.486	349	2.16	18	0.54	115	0.001
XR00802	755531	6497872	358.4	0.5	13.9	33.7	2.06	889	6.02	36.2	0.56	347	0.002
XR00803	755456	6497796	354.8	1.5	45.9	52	0.315	546	4.25	26.4	0.15	721	0.003
XR00804	755395	6497717	353.2	1.5	21	35.2	0.606	1380	3.24	27.9	0.32	877	X
XR00805	755336	6497651	351.4	1.5	20.2	15.2	0.151	527	1.81	15.4	0.37	876	0.001
XR00806	755269	6497573	354.6	0.5	9.7	18.2	0.383	1450	5.74	97	0.59	992	0.007
XR00807	755198	6497495	350.3	1.5	8.6	26.3	0.264	556	2.58	34.2	0.24	285	0.004
XR00808	755133	6497415	347.6	1.5	10	27	0.268	398	2.28	44	0.27	194	0.001
XR00809	755069	6497338	346.3	1.5	7	11.3	0.201	252	1.3	27.2	0.34	106	0.002
XR00810	755004	6497270	352.4	1.5	7.9	25.7	0.253	372	1.81	43.9	0.35	166	0.003
XR00811	754854	6497403	345.1	1.5	12.2	36.9	0.206	344	2.63	48.4	0.13	194	0.001
XR00812	754919	6497475	350.3	1.5	10.7	22.4	0.209	315	1.96	38.4	0.24	166	0.001
XR00813	754981	6497558	349	1.5	9.8	23.4	0.268	413	2.66	50.7	0.24	217	0.001
XR00814	755051	6497630	350	1.5	8.8	30.8	0.273	457	3.01	35	0.16	311	0.005
XR00815	755118	6497708	355.2	1.5	14.4	40.6	0.154	452	2.42	21.2	0.38	398	0.001
XR00816	755185	6497786	352.3	1.5	12.7	17.7	0.197	1490	1.99	28.3	0.13	868	X
XR00817	755248	6497856	353.9	1.5	19.8	50.2	0.457	849	10	36.5	0.58	713	0.004
XR00818	755316	6497935	354.8	1.5	59.9	46.9	0.233	1280	3.42	21.3	0.22	1030	X
XR00819	755382	6498004	363.3	1.5	64.5	53.7	0.402	595	3.83	20.2	0.09	984	0.002
XR00820	755446	6498082	360.4	0.5	25.2	81.4	3.17	673	10.2	28.7	0.52	657	0.008
XR00821	755508	6498148	356.4	1.5	12.5	72	0.565	358	2.62	21.7	0.46	158	X
XR00822	755587	6498232	356.5	1.5	6.2	13.3	0.273	488	2.73	30.6	0.15	223	0.003
XR00823	755647	6498308	362.5	1.5	5	18.1	0.142	311	1.48	16.7	0.17	128	0.005
XR00824	755702	6498374	362.2	1.5	5.2	17.6	0.202	413	1.75	27.6	0.17	186	0.001
XR00825	755765	6498455	363.7	1	5.4	10.7	0.178	457	1.27	22.7	0.2	181	0.001
XR00826	755836	6498530	364.3	1.5	5.6	11.4	0.203	467	1.56	23.8	0.24	226	0.002
XR00827	755904	6498602	368	1.5	5.9	18.4	0.125	316	0.92	13.5	0.3	170	0.002
XR00828	755969	6498678	365.4	1.5	4.9	15.3	0.114	319	0.75	10.5	0.25	150	0.001
XR00829	756030	6498760	364.5	1.5	4.7	13.6	0.122	299	0.99	13.4	0.22	176	0.001
XR00830	756105	6498824	368	1.5	4	8.2	0.159	395	1.26	16.5	0.22	240	0.004
XR00831	755892	6498889	368.4	1.5	7	9	0.097	299	0.89	13.4	0.27	174	0.002
XR00832	755821	6498810	363.2	1.5	7	9.1	0.095	310	0.81	13	0.22	209	0.001
XR00833	755755	6498732	360.9	1.5	4.8	17.9	0.115	296	1.01	16	0.23	172	0.002
XR00834	755695	6498663	364.8	1.5	6	23.7	0.199	441	1.81	30.6	0.19	261	0.002

For personal use only

ASX ANNOUNCEMENT

18 September 2024

Sample ID	Easting	Northing	Elevation	Depth	As	Au (ppb)	Bi	Cr	Cs	Li	Nb	Ni	Ta
XR00835	755636	6498598	356.4	1.5	11.3	47	0.225	560	2.02	42.7	0.19	271	0.001
XR00836	755563	6498508	377.3	1.5	7.2	26.3	0.196	541	1.62	27.2	0.15	197	0.002
XR00837	755485	6498435	356.4	1.5	5.8	21	0.212	396	2.35	32.2	0.16	186	0.002
XR00838	755418	6498355	362.5	1.5	5.7	21	0.278	291	2.48	35.8	0.3	176	0.002
XR00839	755356	6498291	358	1.5	9.1	39.2	0.175	213	1.3	16.9	0.22	102	0.002
XR00840	755294	6498205	358.7	0.5	7.4	26.1	0.525	253	2.22	22.6	0.42	167	0.002
XR00841	755224	6498138	362.4	0.5	14.8	16.3	0.521	964	3.41	37.2	0.6	509	0.001
XR00842	755163	6498054	360.9	1.5	23	32.8	0.213	1070	2.51	29	0.27	634	0.001
XR00843	755094	6497989	357.9	1.5	20.2	53.7	0.117	501	2.52	21.8	0.29	630	0.001
XR00844	755023	6497910	357.1	1.5	14.9	28	0.19	778	3.86	26.7	0.33	559	0.001
XR00845	754968	6497837	355.3	0.5	6.2	24.1	0.14	389	2.38	21.5	0.37	454	X
XR00846	754891	6497763	352.8	1.5	8	34.4	0.257	366	2.59	34.6	0.24	455	0.002
XR00847	754830	6497686	354.8	1.5	11.2	46.9	0.276	384	3.13	54.6	0.23	326	0.003
XR00848	754769	6497609	350.8	1.5	10.5	41.8	0.29	322	2.66	53	0.3	240	0.004
XR00849	754704	6497542	353.9	1.5	9.6	32.1	0.214	280	2.26	48.9	0.19	194	0.003
XR00852	754549	6497675	350.2	1.5	11	46.8	0.245	328	2.93	57.7	0.24	231	0.003
XR00853	754611	6497750	351.6	1.5	8.9	39.8	0.24	274	2.53	49.4	0.24	212	0.002
XR00854	754678	6497829	353.5	1	7	37.3	0.229	323	2.54	40.3	0.24	247	0.002
XR00855	754742	6497900	352.4	1.5	6.9	22.4	0.132	243	1.51	20.7	0.29	310	0.001
XR00856	754814	6497985	356.7	0.5	3.2	13.6	0.217	442	4.19	35.5	0.55	557	0.003
XR00857	754878	6498055	354.7	0.5	7.4	12	0.27	759	6.48	39.1	0.59	768	0.007
XR00858	754930	6498127	356.9	1.5	151	62.9	0.398	1220	2.43	11.7	0.06	1600	X
XR00859	755012	6498207	357.8	1	11.8	93.9	0.268	625	2.82	28	0.37	312	0.003
XR00860	755082	6498284	356.6	1.5	6.3	18	0.068	362	0.89	9.05	0.13	97.6	X
XR00861	755140	6498349	359.9	1.5	6.3	17.7	0.073	255	1.17	14.6	0.18	86.2	X
XR00862	755211	6498432	359.5	1.5	5.9	10	0.217	375	1.86	28.4	0.23	155	0.004
XR00863	755279	6498504	352.6	1.5	5.2	10.8	0.153	301	1.29	19.2	0.19	123	0.001
XR00864	755350	6498578	353.7	1.5	8.2	32.5	0.257	581	2.53	38.4	0.16	228	0.002
XR00865	755407	6498659	360.7	1.5	8.6	42.1	0.169	448	1.36	25.5	0.15	199	0.001
XR00866	755478	6498728	359.9	1.5	9.8	28.8	0.288	645	2.77	48.2	0.26	273	0.005
XR00867	755540	6498803	361.9	1.5	8.2	11.7	0.332	937	3.17	47.7	0.27	341	0.004
XR00868	755607	6498878	360.5	1	5.4	6.1	0.216	708	1.43	20.1	0.25	205	0.002
XR00869	755327	6498856	352.5	1.5	10.5	24.3	0.213	591	2.15	35.2	0.18	221	0.002
XR00870	755258	6498778	358.1	1.5	7.6	25.3	0.207	519	1.86	33.2	0.21	182	0.002
XR00871	755191	6498702	362.2	1.5	8.1	35.7	0.31	592	3.05	46	0.23	238	0.005
XR00872	755125	6498626	359.1	1.5	6.8	16.3	0.25	524	2.78	36.8	0.16	212	0.002
XR00873	755057	6498556	359.1	1.5	5	19.7	0.16	321	1.56	19.1	0.13	136	0.001
XR00874	754992	6498474	357.2	1.5	6.4	30.7	0.085	165	0.96	16.6	0.22	88.6	X
XR00875	754929	6498400	357.9	1.5	5.4	13.4	0.112	409	1.32	17.5	0.21	134	X
XR00876	754859	6498324	355.7	1.5	14	29.4	0.128	295	1.84	20	0.23	103	0.003
XR00877	754798	6498251	354.2	1.5	5.1	46.8	0.08	333	1.35	19.3	0.2	194	0.001
XR00878	754731	6498182	353.6	1	8.4	53	0.086	287	2.18	18	0.22	168	X
XR00879	754665	6498101	353.7	0.5	6.8	12.2	0.254	813	6.94	40.3	0.49	802	0.006

For personal use only

ASX ANNOUNCEMENT

18 September 2024

Sample ID	Easting	Northing	Elevation	Depth	As	Au (ppb)	Bi	Cr	Cs	Li	Nb	Ni	Ta
XR00880	754600	6498018	344	1	8.3	18.8	0.164	344	2.43	25.9	0.21	290	X
XR00881	754529	6497949	350.7	1.5	8	23.4	0.162	269	1.72	27.6	0.21	207	0.001
XR00882	754471	6497872	355.8	1.5	8.7	20	0.196	270	2.28	36.3	0.15	193	0.001
XR00883	754406	6497799	356.3	1.5	7.8	6.1	0.139	159	1.15	22.9	0.36	109	0.006
XR00884	754253	6497931	355.1	1.5	7.1	23.1	0.131	244	1.35	25.2	0.21	139	X
XR00885	754322	6498007	352.8	1.5	7.2	17.7	0.173	265	1.74	32.5	0.27	179	0.001
XR00886	754386	6498080	355.2	1.5	7.3	39.1	0.169	272	1.95	32.4	0.3	211	0.008
XR00887	754454	6498154	357.3	1.5	7.5	15.7	0.13	214	1.43	21.5	0.25	148	0.003
XR00888	754521	6498241	359.3	1.5	6.8	27.1	0.151	308	1.71	24.8	0.22	178	0.002
XR00889	754589	6498314	358.5	1.5	7.3	29.1	0.217	467	2.43	32.6	0.19	190	0.001
XR00890	754645	6498383	359.3	1.5	5.4	19.1	0.101	349	1.38	16	0.3	107	0.004
XR00891	754713	6498456	360.1	1.5	7.7	29.7	0.108	277	1.33	16.9	0.16	110	X
XR00892	754787	6498536	356.8	0.5	7.2	24.8	0.194	362	2.42	26.1	0.53	184	0.005
XR00893	754848	6498616	357.7	1.5	7.9	11.6	0.238	393	2.34	29.3	0.25	183	0.004
XR00894	754915	6498686	361.9	1.5	7.2	21.7	0.191	385	1.88	24.7	0.22	190	0.002
XR00895	754982	6498764	351.7	1.5	5.8	20.3	0.184	286	1.72	22.1	0.29	132	0.007
XR00896	755039	6498838	357.3	1.5	9.2	30.1	0.296	598	2.88	42.8	0.28	266	0.004
XR00897	755108	6498908	358	1.5	7.3	11.3	0.224	594	2.09	37.8	0.24	270	0.003
XR00898	754822	6498884	355.9	1.5	12.6	42.8	0.254	529	2.89	42.9	0.33	223	0.009
XR00899	754757	6498807	353.5	1.5	6.1	16.2	0.257	488	2.93	38.2	0.26	213	0.001
XR00902	754692	6498737	357	1.5	8.3	11.3	0.208	400	2.34	30.8	0.2	180	0.001
XR00903	754620	6498664	346.1	1.5	6.3	18	0.182	343	1.8	23.6	0.21	149	0.001
XR00904	754557	6498592	356.8	1.5	6	16.6	0.155	309	1.68	21.4	0.18	131	X
XR00905	754495	6498516	359.1	1.5	5.4	16.2	0.098	174	1.03	15.3	0.3	90.4	X
XR00906	754431	6498442	354.7	1.5	7.6	39.5	0.166	325	2.15	28.5	0.2	215	0.002
XR00907	754363	6498364	355	1.5	5.9	21.1	0.145	265	1.65	24.1	0.24	145	0.001
XR00908	754297	6498287	353.7	1.5	8.3	30.7	0.193	296	1.77	29.4	0.28	179	0.002
XR00909	754235	6498211	354	1.5	8.2	17.2	0.138	284	1.54	28.5	0.3	265	0.003
XR00910	754167	6498134	347.4	1.5	14.3	14.1	0.153	307	1.82	32.8	0.37	233	0.006
XR00911	754106	6498060	343.2	1.5	8.7	14.6	0.119	205	1.51	26.9	0.29	135	X
XR00912	753958	6498203	347	1.5	9.7	12.9	0.116	216	1.38	29.7	0.35	143	0.002
XR00913	754027	6498272	348.3	1.5	9.1	20.8	0.144	225	1.64	30	0.31	162	0.002
XR00914	754089	6498353	348.3	1.5	11.2	36.2	0.16	351	2.59	40.7	0.26	265	X
XR00915	754152	6498418	349	1.5	7.7	14.6	0.144	307	2.14	31.3	0.26	208	0.002
XR00916	754213	6498498	349.2	1.5	11.9	33	0.201	442	2.78	39.6	0.24	296	0.002
XR00917	754278	6498576	349.8	1.5	8.3	28.8	0.185	398	2.44	33.2	0.22	209	0.001
XR00918	754346	6498652	352.2	1.5	7.5	17.8	0.198	412	2.12	29.8	0.35	193	0.003
XR00919	754414	6498714	349.3	1.5	5.2	16.2	0.111	243	1.22	18	0.25	122	0.001
XR00920	754481	6498797	357.7	1.5	7.1	29.2	0.13	279	1.35	20.2	0.28	124	0.002
XR00921	754541	6498873	353.8	1.5	7.2	21.8	0.17	373	1.91	26.9	0.32	165	0.005
XR00922	754524	6499157	353.5	1.5	8.4	24.4	0.145	489	1.66	26	0.29	162	0.003
XR00923	754458	6499078	350.9	1.5	7.5	18.6	0.186	429	2.28	30	0.28	222	0.002
XR00924	754390	6499008	351.6	1.5	8.6	19.8	0.18	447	2.58	33.6	0.2	232	0.004

For personal use only

ASX ANNOUNCEMENT

18 September 2024

Sample ID	Easting	Northing	Elevation	Depth	As	Au (ppb)	Bi	Cr	Cs	Li	Nb	Ni	Ta
XR00925	754328	6498926	348.5	1.5	11.5	26.2	0.199	593	2.99	42.4	0.21	238	0.001
XR00926	754259	6498855	347.8	1.5	7.6	23.6	0.118	254	1.5	24.8	0.25	146	0.002
XR00927	754192	6498782	353.6	1.5	6.8	25.4	0.092	280	1.29	24.5	0.22	148	0.001
XR00928	754125	6498706	354.1	1.5	8.1	32.9	0.126	293	1.99	30.1	0.25	189	0.002
XR00929	754064	6498628	349.6	1.5	9.6	26	0.149	292	2.1	33.6	0.25	199	0.002
XR00930	753998	6498549	352.6	1.5	13.8	31.5	0.166	363	2.2	41.5	0.23	266	0.002
XR00931	753932	6498474	352.4	1.5	8.7	29.6	0.128	250	1.61	31.6	0.24	160	0.002
XR00932	753866	6498396	348.1	1.5	10.7	28.1	0.13	248	1.71	38.4	0.24	174	0.002
XR00933	753807	6498326	345.5	1.5	12	15.4	0.124	296	1.59	47.7	0.22	237	0.002
XR00934	753652	6498456	347.8	1.5	7.2	32.1	0.108	191	1.67	33.8	0.23	104	0.002
XR00935	753719	6498534	349.4	1.5	7	17	0.08	116	0.95	20.2	0.23	74.8	0.001
XR00936	753782	6498605	352.7	1.5	7.9	27.9	0.087	162	1.22	25.2	0.23	102	0.001
XR00937	753848	6498685	350.6	1.5	6.4	24.3	0.119	225	1.8	32.1	0.2	136	0.002
XR00938	753914	6498759	349.9	1.5	9.2	20.2	0.101	206	1.39	29.5	0.26	200	0.003
XR00939	753978	6498838	350.7	1.5	7.1	24.9	0.164	358	2.62	43.5	0.27	232	0.002
XR00940	754047	6498913	350	1.5	10.1	38.7	0.118	264	1.79	33.5	0.29	212	0.002
XR00941	754104	6498981	353.7	1	7.7	26.4	0.148	329	2.28	34.2	0.24	196	0.002
XR00942	754172	6499066	354.4	1.5	8	22.1	0.155	339	2.06	42.1	0.22	253	0.002
XR00943	754249	6499139	330.3	1.5	7.4	15.6	0.102	268	1.71	25.2	0.21	160	0.001
XR00944	754307	6499212	346.1	1.5	8	18.9	0.101	281	1.55	29.9	0.21	173	0.001
XR00945	754375	6499289	356.3	1.5	5.7	15	0.127	291	1.18	18.6	0.25	156	0.002
XR00946	754440	6499360	353.9	1.5	6	28.5	0.199	507	2.39	38.2	0.22	388	0.002
XR00947	754505	6499434	354.3	1.5	6.9	26.8	0.242	472	2.89	49	0.22	403	0.005
XR00948	754226	6499423	341.5	1.5	10	31.2	0.129	331	1.85	37.7	0.24	305	0.002
XR00949	754287	6499492	349.1	1.5	7.4	29	0.204	441	2.51	57.1	0.36	404	0.003
XR00952	754353	6499578	353.3	1.5	10.6	34.9	0.112	265	1.38	25	0.29	285	0.003
XR00953	754413	6499642	354.4	1.5	7.4	20.6	0.114	288	1.49	20.6	0.27	221	0.002
XR00954	754487	6499721	356.8	1.5	7.2	32.2	0.169	560	2.75	30.6	0.29	308	0.003
XR00955	754554	6499796	348.7	1.5	6.6	13	0.181	438	2.76	32.2	0.18	299	0.002
XR00956	754162	6499354	363.4	1.5	10.2	23.3	0.143	381	2.12	49.7	0.28	294	0.004
XR00957	754091	6499269	353.2	1.5	9.5	20.9	0.151	347	2.23	45.2	0.25	301	0.003
XR00958	754020	6499199	350.6	1.5	9.9	17.1	0.146	270	2.27	41.8	0.33	273	0.003
XR00959	753961	6499126	350.3	1.5	11.5	22.6	0.109	243	1.83	40.8	0.24	276	0.002
XR00960	753894	6499044	349.8	1.5	7.6	38.7	0.093	233	1.89	33.6	0.27	199	0.002
XR00961	753826	6498966	351.5	1.5	7	20.2	0.13	300	2.14	45.3	0.23	212	X
XR00962	753759	6498887	350.9	1.5	7.8	14	0.255	534	3.46	82.3	0.2	333	0.004
XR00963	753699	6498812	348.8	1.5	8.3	13.6	0.143	251	2.8	69	0.17	278	0.002
XR00964	753631	6498740	345.9	1.5	6.5	16.5	0.206	375	3.89	96.7	0.21	358	0.004
XR00965	753562	6498657	353.1	1.5	8.5	20.1	0.126	273	2.21	49.6	0.25	155	0.003
XR00966	753503	6498588	348.7	1.5	7.2	15.4	0.139	250	2.07	45.4	0.28	154	0.002
XR00967	753628	6499023	334.5	1.5	8.3	37.4	0.12	267	2.16	41.8	0.28	186	0.002
XR00968	753680	6499105	351.1	1.5	11.8	12.9	0.109	246	1.75	36.2	0.26	184	0.002
XR00969	753740	6499184	349.3	1.5	11	26.1	0.1	269	1.96	43	0.25	220	X

For personal use only

ASX ANNOUNCEMENT

18 September 2024

Sample ID	Easting	Northing	Elevation	Depth	As	Au (ppb)	Bi	Cr	Cs	Li	Nb	Ni	Ta
XR00970	753815	6499255	349.9	1.5	6.8	25.2	0.16	331	2.79	52.1	0.29	272	0.003
XR00971	753879	6499327	350.5	1.5	9.2	20.2	0.14	352	2.25	51.4	0.21	289	X
XR00972	753945	6499400	349.6	1.5	11.8	14.2	0.139	385	2.47	52.8	0.23	341	0.001
XR00973	754012	6499482	350.2	1.5	11	25.7	0.115	333	1.93	33.5	0.29	284	0.004
XR00974	754074	6499553	350	1.5	8.4	16.3	0.087	284	1.15	20.2	0.28	226	0.001
XR00975	754150	6499618	354.9	1.5	8.8	19.3	0.114	294	1.44	23.6	0.25	259	0.001
XR00976	754209	6499706	351.6	1.5	8.8	29.6	0.104	244	1.38	18.6	0.18	238	0.002
XR00977	754270	6499777	352.1	1.5	10.3	33.8	0.145	319	2.48	31.8	0.23	241	0.004
XR00978	754336	6499860	354.1	1	8.6	18.4	0.132	333	2.71	27.7	0.22	298	0.002
XR00979	754399	6499935	352.2	1.5	8.7	18.7	0.16	414	3.22	28.8	0.22	428	0.004
XR00980	754472	6500004	351.8	0.5	10.4	13.7	0.172	529	3.33	33.7	0.21	460	0.002
XR00981	754528	6500082	351.6	0.5	5.2	5.1	0.302	752	4.87	47.8	0.74	687	0.008
XR00982	754519	6500364	359.3	1.5	5.8	25	0.125	392	2.12	22.4	0.38	358	0.001
XR00983	754452	6500280	358.7	0.5	3.9	3.5	0.238	643	3.9	40	0.71	507	0.006
XR00984	754383	6500212	351.1	0.5	5.5	5.8	0.267	790	3.74	43.6	0.47	456	0.002
XR00985	754317	6500127	353.9	1.5	8.6	18.5	0.107	374	1.69	20.9	0.24	263	0.001
XR00986	754261	6500061	348.4	1.5	7.2	21.7	0.106	230	1.84	21.6	0.15	234	0.005
XR00987	754198	6500001	350.9	1.5	9.9	25	0.148	272	2.89	34.7	0.18	396	0.005
XR00988	754130	6499916	347.1	1.5	9.2	30.9	0.117	268	2.57	32.9	0.27	230	0.003
XR00989	754058	6499840	353	1.5	8.4	28.7	0.106	288	1.76	27.7	0.18	204	X
XR00990	753985	6499758	350.6	1.5	9.1	30.7	0.109	215	1.83	30.8	0.21	206	0.006
XR00991	753905	6499692	347.4	1.5	10.5	28.7	0.086	204	1.22	23.3	0.19	189	0.001
XR00992	753864	6499605	355.8	1.5	12.9	21.5	0.148	239	3.63	28.5	0.16	223	0.002
XR00993	753790	6499534	349.3	1.5	9.5	38	0.094	249	1.56	30.6	0.26	181	0.001
XR00994	753729	6499456	352.1	1.5	7.6	32.9	0.112	226	1.86	28.9	0.21	210	0.002
XR00995	753652	6499389	353.3	1	7.9	14.8	0.179	442	3.12	81.8	0.24	450	0.002
XR00996	753598	6499316	351	1.5	8.4	33.7	0.135	235	2.36	37.2	0.28	203	0.003
XR00997	753526	6499233	352.9	1.5	7.8	18.4	0.15	289	3.05	57.7	0.24	237	0.004
XR00998	753458	6499157	350.7	1.5	7.1	14.5	0.207	505	3.96	85.9	0.23	310	0.002
XR00999	753378	6499369	351.6	1.5	7.7	44.8	0.12	243	1.81	28.1	0.25	184	0.002
XR01002	753448	6499447	353.2	1.5	8.9	30.8	0.156	399	2.89	51.2	0.28	261	0.001
XR01003	753510	6499526	351.1	1.5	7	18.6	0.19	398	3.5	60.2	0.19	308	0.001
XR01004	753573	6499600	353.2	1.5	8	23	0.11	263	2.23	36.7	0.29	207	0.001
XR01005	753647	6499669	352	1.5	9	33.5	0.093	195	1.68	29.5	0.25	175	0.001
XR01006	753711	6499750	352.8	1.5	9	34.6	0.137	345	3.19	59.4	0.25	363	0.002
XR01007	753775	6499822	351.2	1.5	8.5	22.6	0.201	394	4.36	85.8	0.14	595	0.002
XR01008	753834	6499890	353.1	1.5	9.1	24.8	0.136	281	3.02	59.6	0.28	388	0.002
XR01009	753900	6499955	351.7	1.5	8.6	33.2	0.126	254	2.45	42.8	0.28	293	0.001
XR01010	753963	6500044	354.2	1.5	10.4	24.1	0.103	183	1.68	25.9	0.28	189	0.001
XR01011	754042	6500118	350	1.5	8.8	29.4	0.128	268	2.71	33.1	0.25	270	0.001
XR01012	754109	6500198	349.2	1.5	8.5	20.8	0.109	227	1.9	24.8	0.3	218	0.001
XR01013	754176	6500271	352.7	1.5	8.9	13.9	0.094	268	1.55	17.3	0.27	222	0.001
XR01014	754235	6500353	354.5	0.5	7.2	6.8	0.324	923	5.69	52.3	0.47	735	0.003

For personal use only

ASX ANNOUNCEMENT

18 September 2024

Sample ID	Easting	Northing	Elevation	Depth	As	Au (ppb)	Bi	Cr	Cs	Li	Nb	Ni	Ta
XR01015	754307	6500417	351.5	0.5	5.4	3.2	0.317	937	5.31	42.8	0.6	663	0.005
XR01016	754370	6500499	362.1	1.5	7.7	11.1	0.114	456	1.8	17	0.26	357	0.001
XR01017	754428	6500575	359.2	0.5	6.2	5	0.178	493	3.09	24.6	0.62	500	0.003
XR01018	754496	6500639	361.5	1.5	7.2	43.7	0.074	260	1.34	16	0.22	264	0.002
XR01019	754569	6500716	360	1	9.6	23.1	0.133	493	2.24	20.3	0.51	296	0.001
XR01020	754541	6501007	390.3	0.5	8.8	14	0.16	423	2.38	22.6	0.57	234	0.002
XR01021	754482	6500926	382.7	0.5	6.5	7.5	0.256	500	3.24	26.3	0.35	245	0.001
XR01022	754419	6500849	362.1	1.5	8.5	16.7	0.104	403	1.68	16.2	0.41	241	0.001
XR01023	754357	6500777	362.8	0.5	4.4	4.7	0.294	748	5.12	45.5	0.66	756	0.004
XR01024	754286	6500701	357	0.5	3.8	6	0.224	649	4.34	31.8	0.59	561	0.004
XR01025	754210	6500624	355.2	1.5	8.6	8.7	0.145	431	2.5	20	0.31	310	0.001
XR01026	754151	6500541	353.4	1	10	11.7	0.167	594	2.75	25.4	0.28	399	X
XR01027	754087	6500466	351.1	1.5	7.4	13.8	0.107	352	1.82	18	0.24	253	0.002
XR01028	754020	6500403	353.6	1.5	8.8	20.2	0.153	314	2.21	31.2	0.19	261	0.001
XR01029	753872	6500533	348.6	1	9	20.4	0.214	267	3	48.3	0.2	232	0.002
XR01030	753926	6500616	350.4	1	10.9	18	0.153	200	1.96	29.7	0.26	137	0.002
XR01031	754002	6500684	351.6	1.5	7.5	9.5	0.11	268	1.6	17.5	0.27	156	0.002
XR01032	754067	6500760	357.9	1.5	7.6	10.1	0.14	325	2.24	24	0.23	243	0.001
XR01033	754132	6500833	354.3	0.5	9.2	16.2	0.162	534	3.37	30.4	0.35	396	0.002
XR01034	754203	6500906	356.7	0.5	4.9	5.2	0.199	398	3.16	29.8	0.5	393	0.003
XR01035	754268	6500980	353	0.5	6.1	10.3	0.304	770	4.18	45.7	0.55	603	0.005
XR01036	754329	6501059	357.1	1	7.2	12	0.155	423	2.03	23.8	0.23	229	0.002
XR01037	754400	6501135	357.4	1	5.9	7.5	0.152	375	1.49	18.2	0.26	165	0.001
XR01039	754524	6501282	361.5	1.5	7.4	17	0.087	236	1.11	17.9	0.23	128	0.001
XR01040	754442	6501491	352.6	1.5	9.8	21.5	0.206	286	2.75	42.4	0.16	132	0.001
XR01041	754382	6501409	358.3	1.5	9.1	18.1	0.198	293	2.61	40.2	0.21	168	0.002
XR01042	754312	6501338	358	1.5	9.9	19.8	0.134	262	1.66	27.2	0.25	141	0.002
XR01043	754247	6501262	356.2	1.5	8.6	18.7	0.112	232	1.59	24.9	0.22	118	0.001
XR01044	754176	6501190	354.6	1.5	8.8	16.3	0.105	235	1.09	17.5	0.23	86.6	0.001
XR01045	754114	6501112	355.5	1.5	9.8	24.7	0.063	175	0.84	14.7	0.25	72.2	0.001
XR01046	754046	6501033	352.6	1.5	8.8	10.4	0.156	274	1.93	26.7	0.24	163	0.002
XR01047	753985	6500970	348.6	1.5	9.7	27.5	0.158	275	2.41	28.3	0.18	161	0.002
XR01048	753923	6500893	349.5	1	9.4	20.1	0.089	201	1.59	19.6	0.23	100	0.001
XR01049	753845	6500817	348.9	1	7.2	10.2	0.202	304	3.28	33.3	0.2	170	0.001
XR01052	753793	6500745	349.4	1.5	8.3	12.8	0.284	381	3.8	48.7	0.17	227	0.003
XR01053	753638	6500866	349.9	1.5	9.9	20.3	0.1	140	1.63	19.9	0.3	65.6	0.001
XR01054	753703	6500944	348.2	1	10.4	21.2	0.099	146	1.57	18.2	0.24	80.3	0.002
XR01055	753772	6501024	352.5	1.5	10.7	18.9	0.109	165	1.97	23.6	0.22	79.2	0.001
XR01056	753832	6501097	348.7	1.5	11.2	17.7	0.129	194	1.93	27.8	0.25	95	0.002
XR01057	753903	6501170	352.9	1.5	9.9	16.5	0.118	175	1.7	25.2	0.28	82.5	0.001
XR01058	753965	6501248	354.1	1.5	7.9	12.1	0.118	124	1.59	23.3	0.25	76.1	0.002
XR01059	754025	6501317	354.3	1.5	7.6	15.8	0.119	178	1.69	26.2	0.2	78.6	0.001
XR01060	754098	6501391	353.9	1.5	8.1	24	0.134	208	1.81	30.2	0.21	85.3	0.001

For personal use only

ASX ANNOUNCEMENT

18 September 2024

Sample ID	Easting	Northing	Elevation	Depth	As	Au (ppb)	Bi	Cr	Cs	Li	Nb	Ni	Ta
XR01061	754175	6501474	355.7	1.5	8.4	18.1	0.171	225	2.33	36	0.22	99.8	0.002
XR01062	754232	6501548	355.7	1.5	9	13	0.218	318	3.15	43.3	0.19	103	0.002
XR01063	754292	6501622	352.2	1.5	8.2	12.6	0.271	309	3.59	43.5	0.14	110	0.002
XR01064	754078	6501675	354.4	1.5	11.5	15.5	0.236	291	3.57	43.9	0.24	120	0.002
XR01065	754018	6501601	353.7	1.5	9	9.1	0.279	306	3.94	47.4	0.14	114	0.003
XR01066	753948	6501526	348.6	1	7.8	10.6	0.257	297	3.57	44	0.2	102	0.002
XR01067	753881	6501452	354.2	1.5	10.5	30.4	0.154	264	2.17	31.3	0.2	68.7	0.001
XR01068	753811	6501368	347.9	1.5	9.7	23.3	0.141	224	2.26	28.6	0.21	85.2	0.002
XR01069	753752	6501311	357.1	1.5	11.2	17.1	0.138	209	2.31	27.3	0.28	85.3	0.001
XR01070	753680	6501220	357	1.5	10.6	12.2	0.187	251	3.15	35.8	0.27	114	0.003
XR01071	753619	6501144	354.5	1.5	8.2	9.7	0.172	209	2.42	28.6	0.28	112	0.002
XR01072	753553	6501081	350.8	1.5	10.1	22.1	0.16	220	2.62	28.2	0.25	97	0.002
XR01073	753479	6500997	357.3	1.5	13.6	34.1	0.141	196	2.27	26.8	0.31	88.2	0.002
XR01074	753425	6500926	340.8	1.5	9.5	17.2	0.107	117	1.6	22.6	0.21	64.2	0.001
XR01075	753272	6501055	348.4	1.5	11.3	10.4	0.159	249	2.86	37.4	0.2	96	0.002
XR01076	753339	6501130	349.3	1.5	11.3	38.7	0.273	370	3.32	43.1	0.16	116	0.002
XR01077	753398	6501200	349.6	1.5	8	13.1	0.157	187	1.98	26.8	0.24	66.8	0.002
XR01078	753472	6501288	350.2	1	8.4	10.4	0.26	272	3.31	39.6	0.16	106	0.003
XR01079	753534	6501369	351.4	1.5	9	7.4	0.321	371	4.42	52.9	0.27	135	0.004
XR01080	753599	6501440	350.7	1.5	8.5	15.9	0.26	313	3.88	41.8	0.13	123	0.003
XR01081	753663	6501518	353.6	1	9.7	17	0.226	294	3.51	41.4	0.33	108	0.004
XR01082	753739	6501582	354.4	1	9.4	17	0.245	296	3.47	43.8	0.25	106	0.003
XR01083	753794	6501651	355.5	1	11.9	14.8	0.27	369	3.93	50.8	0.23	123	0.004
XR01084	753579	6501721	356.1	1.5	8.9	25	0.146	233	2.41	33.8	0.22	80.9	0.001
XR01085	753513	6501642	350.8	1	11.7	13.6	0.218	294	3.27	42.1	0.24	115	0.002
XR01086	753447	6501559	353.4	1	10	10.4	0.23	284	3.42	42.1	0.22	107	0.002
XR01087	753382	6501488	356.2	1.5	9.4	14.9	0.192	245	2.78	32.3	0.24	90.1	0.002
XR01088	753320	6501408	351.4	1.5	14.5	31.5	0.151	238	2.92	38.3	0.26	94.1	0.002
XR01089	753250	6501338	350.8	1.5	9.1	14.5	0.124	163	1.82	28.5	0.26	76.3	0.002
XR01090	753178	6501268	334.7	1.5	11.3	20	0.18	227	3.31	45.8	0.22	126	0.002
XR01091	753125	6501192	346.9	1.5	9.5	17.4	0.128	178	2.06	25.2	0.26	67.1	0.002
XR01092	752972	6501319	314.1	1.5	7.8	19.6	0.115	187	2.54	34.9	0.25	108	0.001
XR01093	753035	6501408	348.4	1	9.1	15.6	0.228	281	3.72	47.5	0.22	147	0.002
XR01094	753104	6501475	352.4	1.5	8.5	12.5	0.165	207	2.87	38.8	0.26	128	0.002
XR01095	753171	6501546	351.1	1.5	15.9	24.8	0.194	300	3.22	44	0.21	108	0.002
XR01096	753236	6501623	348	1	11.4	13.2	0.23	269	3.49	33	0.24	137	0.004
XR01097	753299	6501690	353.2	1.5	13.2	28.7	0.17	194	2.56	33.8	0.1	97.7	0.003
XR01098	753018	6501678	342.7	1.5	12.3	24.7	0.145	219	2.41	29.3	0.23	94.6	0.002
XR01099	752949	6501598	347.5	1.5	13.8	26.1	0.149	209	2.5	30.3	0.23	113	0.003
XR01102	752885	6501529	346.5	1.5	9.4	21.9	0.095	153	1.52	22	0.25	68.9	0.002
XR01103	752815	6501455	344.2	1.5	13.3	32.4	0.153	296	2.56	39.7	0.18	125	0.002

For personal use only

ASX ANNOUNCEMENT

18 September 2024

Competent Persons Statement

The Exploration Results reported in this announcement are based on, and fairly represent, information and supporting documentation prepared by Mr Brodie Box, MAIG. Mr Box is a geologist and has adequate professional experience with the exploration and geology of Western Australia to qualify as a Competent Person as defined in the 2012 Edition of the Joint Ore Reserves Committee (JORC) Australasian Code for Reporting of Exploration Results, Mineral Resources and Ore Reserves. Mr Box consents to the form and context in which the Exploration Results are presented in this announcement.

This announcement has been approved for release by:

John Featherby

Chairman

XTC Lithium Limited

Email: info@xantippe.com.au

www.xantippe.com.au

About the Southern Cross Gold Project

The Southern Cross Project is located 380km east of Perth, southeast of Southern Cross in the Yilgarn Goldfield.

The project comprises 16 Prospecting Licences and 7 Exploration Licences with a combined area of 197 km², over mostly contiguous tenements covering over 40km of strike of the Southern Cross Greenstone Belt, which has historically produced around 15Moz gold, predominantly from the Marvel Loch and Southern Cross centres, both of which are in operation to varying extents.

The project area is serviced by sealed roads, grid power, scheme water, rail and town amenities. Minjar operates the Marvel Loch plant nearby and Ramelius Resources operates the Edna May facility some 60 kilometres to the west.



ASX ANNOUNCEMENT

18 September 2024

JORC Code, 2012 Edition: Table 1

Section 1: Sampling Techniques and Data

For personal use only

Criteria	JORC – Code of Explanation	Commentary
Sampling techniques	<p><i>Nature and quality of sampling (e.g. cut channels, random chips, or specific specialised industry standard measurement tools appropriate to the minerals under investigation, such as down hole gamma sondes, or handheld XRF instruments, etc.). These examples should not be taken as limiting the broad meaning of sampling. Include reference to measures taken to ensure sample representivity and the appropriate calibration of any measurement tools or systems used.</i></p> <p><i>Aspects of the determination of mineralisation that are material to the Public Report. In cases where 'industry standard' work has been done this would be relatively simple (e.g. 'reverse circulation drilling was used to obtain 1 m samples from which 3 kg was pulverised to produce a 30 g charge for fire assay').</i></p> <p><i>In other cases more explanation may be required, such as where there is coarse gold that has inherent sampling problems. Unusual commodities or mineralisation types (e.g. submarine nodules) may warrant disclosure of detailed information.</i></p>	<ul style="list-style-type: none"> • A total of 598 auger holes were drilled for 598m with samples taken by 3.5" open flight auger. • Interface samples from 1m-1.5m below surface targeting the saprolite layer. • One <1kg sample was produced by scoop sampling the drilled material at each drill site. <ul style="list-style-type: none"> • Samples were sent to Labwest Laboratory in Perth for UltraFines analysis. Samples are reduced to 40g which is separated in water to get a 2micron fraction for analysis via aqua regia microwave digest.
Drilling techniques	<p><i>Drill type (e.g. core, reverse circulation, open-hole hammer, rotary air blast, auger, Bangka, sonic, etc) and details (eg core diameter, triple or standard tube, depth of diamond tails, face-sampling bit or other type, whether core is oriented and if so, by what method, etc).</i></p>	<ul style="list-style-type: none"> • A Landcruiser mounted auger rig was utilised for drilling 3.5" diameter holes. • Drilling was generally from 1 to 1.5m depth, with some shallow 0.5m samples in hard ground.



ASX ANNOUNCEMENT

18 September 2024

Drill sample recovery	<i>Method of recording and assessing core and chip sample recoveries and results assessed.</i>	<ul style="list-style-type: none"> Each drill site had sample depth, colour and HCl reaction details recorded on site by the auger rig operating staff.
	<i>Measures taken to maximise sample recovery and ensure representative nature of the samples.</i>	<ul style="list-style-type: none"> Interface samples were taken from 1m depth to represent material below transported cover. Regolith sampling may inadvertently collect transported material as opposed to in-situ creating false anomalies. Ultrafines analysis may minimise this risk.
	<i>Whether a relationship exists between sample recovery and grade and whether sample bias may have occurred due to preferential loss/gain of fine/coarse material.</i>	<ul style="list-style-type: none"> No bias known
Logging	<i>Whether core and chip samples have been geologically and geotechnically logged to a level of detail to support appropriate Mineral Resource estimation, mining studies and metallurgical studies.</i>	<ul style="list-style-type: none"> Logging recorded the gps location of the hole, depth of samples and basic geological information deemed adequate for auger drilling.
	<i>Whether logging is qualitative or quantitative in nature. Core (or costean, channel, etc) photography.</i>	<ul style="list-style-type: none"> . Qualitative
	<i>The total length and percentage of the relevant intersections logged.</i>	<ul style="list-style-type: none"> Each sample site was logged
Sub-sampling techniques and sample preparation	<i>If core, whether cut or sawn and whether quarter, half or all core taken.</i>	<ul style="list-style-type: none"> N/A
	<i>If non-core, whether riffled, tube sampled, rotary split, etc and whether sampled wet or dry.</i>	<ul style="list-style-type: none"> All samples were dry
	<i>For all sample types, the nature, quality and appropriateness of the sample preparation technique.</i>	<ul style="list-style-type: none"> Sample preparation is appropriate to the sample type and is of a standard considered acceptable by the Competent Person
	<i>Quality control procedures adopted for all sub-sampling stages to maximise representivity of samples.</i>	<ul style="list-style-type: none"> Commercially prepared standard samples were inserted at a rate of one per ~50 samples.
	<i>Measures taken to ensure that the sampling is representative of the in situ material collected, including for instance results for field duplicate/second-half sampling.</i>	<ul style="list-style-type: none"> One field duplicate sample was taken and submitted each ~50 samples.
	<i>Whether sample sizes are appropriate to the grain size of the material being sampled.</i>	<ul style="list-style-type: none"> Sample sizes are considered appropriate for the sampling technique of an auger program.

For personal use only



ASX ANNOUNCEMENT

18 September 2024

Quality of assay data and laboratory tests	<i>The nature, quality and appropriateness of the assaying and laboratory procedures used and whether the technique is considered partial or total.</i>	<ul style="list-style-type: none"> The laboratory analysis is deemed appropriate for the sampling technique of an auger program.
	<i>For geophysical tools, spectrometers, handheld XRF instruments, etc, the parameters used in determining the analysis including instrument make and model, reading times, calibrations factors applied and their derivations, etc.</i>	<ul style="list-style-type: none"> N/A
	<i>Nature of quality control procedures adopted (e.g. standards, blanks, duplicates, external laboratory checks) and whether acceptable levels of accuracy (i.e. lack of bias) and precision have been established.</i>	<ul style="list-style-type: none"> The Competent Person considers that commercially prepared standard samples and the addition of duplicate samples is in sufficient proportion to inform a meaningful analysis of accuracy with results confirming this.
Verification of sampling and assaying	<i>The verification of significant intersections by either independent or alternative company personnel.</i>	<ul style="list-style-type: none"> N/A
	<i>The use of twinned holes.</i>	<ul style="list-style-type: none"> N/A
	<i>Documentation of primary data, data entry procedures, data verification, data storage (physical and electronic) protocols.</i>	<ul style="list-style-type: none"> All data was captured in the field by drill contractors and supplied in digital form to Xantippe which has been added to a database.
	<i>Discuss any adjustment to assay data.</i>	<ul style="list-style-type: none"> Assays received below detection limit ("X") were designated a numerical value of -0.001 for numerical analysis.
Location of data points	<i>Accuracy and quality of surveys used to locate drill holes (collar and down-hole surveys), trenches, mine workings and other locations used in Mineral Resource estimation.</i>	<ul style="list-style-type: none"> Hole collars were located with a hand-held GPS and deemed of sufficient accuracy for this program.
	<i>Specification of the grid system used.</i>	<ul style="list-style-type: none"> All hole collars were located in accordance with the MGA94 grid, Zone 50
	<i>Quality and adequacy of topographic control.</i>	<ul style="list-style-type: none"> Elevation recorded from GPS is considered accurate to within ~5-10m, but samples are considered surface samples and controlled by a DTM in mapping software.
Data spacing and distribution	<i>Data spacing for reporting of Exploration Results.</i>	<ul style="list-style-type: none"> Holes were drilled on a 100m (EW) by 200m (NS) lines.
	<i>Whether the data spacing and distribution is sufficient to establish the degree of geological and grade continuity appropriate for the Mineral</i>	<ul style="list-style-type: none"> Auger results would not be used in resource estimation.

For personal use only



ASX ANNOUNCEMENT

18 September 2024

	<i>Resource and Ore Reserve estimation procedure(s) and classifications applied.</i>	
	<i>Whether sample compositing has been applied.</i>	<ul style="list-style-type: none"> N/A
Orientation of data in relation to geological structure	<i>Whether the orientation of sampling achieves unbiased sampling of possible structures and the extent to which this is known, considering the deposit type.</i>	<ul style="list-style-type: none"> Grid bias towards NW striking lithologies with greater density across strike as represented in images.
	<i>If the relationship between the drilling orientation and the orientation of key mineralised structures is considered to have introduced a sampling bias, this should be assessed and reported if material.</i>	<ul style="list-style-type: none"> As above
Sample security	<i>The measures taken to ensure sample security.</i>	<ul style="list-style-type: none"> Samples were collected on site under the supervision of the drill contractors and delivered to the laboratory in Perth by a trusted transport company.
Audits or reviews	<i>The results of any audits or reviews of sampling techniques and data.</i>	<ul style="list-style-type: none"> No audit has been undertaken of the preliminary results being reported.

For personal use only



ASX ANNOUNCEMENT

18 September 2024

Section 2: Reporting of Exploration Results

(Criteria listed in the preceding section also apply to this section)

For personal use only

	JORC – Code of Explanation	Commentary
Tenement and land tenure status	<p><i>Type, reference name/number, location and ownership including agreements or material issues with third parties such as joint ventures, partnerships, overriding royalties, native title interests, historical sites, wilderness or national park and environmental settings.</i></p> <p><i>The security of the tenure held at the time of reporting along with any known impediments to obtaining a licence to operate in the area.</i></p>	<p>Tenure is held by Xantippe SX PTY LTD, a wholly owned subsidiary of XTC Lithium Limited</p> <p>There are no known native title sites over granted tenure. Tenements are within the Marlinyu Ghoorlie claimant group.</p> <p>Tenements are on unallocated crown land. Tenements are granted and reported to be in good standing.</p> <p>Portions of the tenements are within the Parker Range Ecological Community.</p>
Exploration done by other parties	<p><i>Acknowledgement and appraisal of exploration by other parties.</i></p>	<p>The Company has obtained historical exploration records from DMIRS WAMEX database. Most of the historical work was conducted by Sons of Gwalia Ltd (public company) and Stephen Arthur Payne (private individual) and Minjar (private).</p> <p>The Competent Person considers this work to have been undertaken in accordance with industry standards current at the time.</p>
Geology	<p><i>Deposit type, geological setting and style of mineralisation.</i></p>	<p>The mineralisation types include structurally controlled epithermal gold, banded-iron-formation (BIF) hosted gold, pegmatitic tin-tantalum-niobium and porphyry copper-gold mineralisation. The geological setting is Archean greenstones of the Yilgarn Goldfield intruded by Archean granite domes.</p>
Drill hole information	<p><i>A summary of all information material to the understanding of the exploration results including a tabulation of the following information for all Material drill holes:</i></p> <ul style="list-style-type: none"> • <i>easting and northing of the drill hole collar</i> • <i>elevation or RL (Reduce Level) – elevation above sea level in metres) of the drill hole collar</i> • <i>dip and azimuth of the hole</i> • <i>down hole length and interception depth</i> 	<p>Preliminary drill hole collar locations are included in the body of this Report. The hole collars have not yet been formally surveyed and the Competent Person considers the preliminary locations to be appropriate for these Exploration Results.</p>



ASX ANNOUNCEMENT

18 September 2024

For personal use only

	<ul style="list-style-type: none"> • hole length 	
	<p><i>If the exclusion of this information is justified on the basis that the information is not Material and this exclusion does not detract from the understanding of the report, the Competent Person should clearly explain why this is the case.</i></p>	
Data aggregation methods	<p><i>In reporting Exploration Results, weighting averaging techniques, maximum and/or minimum grade truncations (eg cutting of high grades) and cut-off grades are usually Material and should be stated.</i></p> <p><i>Where aggregate intercepts incorporate short lengths of high grade results and longer lengths of low grade results, the procedure used for such aggregation should be stated and some typical examples of such aggregations should be shown in detail.</i></p> <p><i>The assumptions used for any reporting of metal equivalent values should be clearly stated.</i></p>	<p>Assay data is reported as received from the laboratory. X designates no detection from analysis.</p> <p>No metal equivalent values have been reported.</p>
Relationship between mineralisation widths and intercept lengths	<p><i>These relationships are particularly important in the reporting of Exploration Results.</i></p> <p><i>If the geometry of the mineralisation with respect to the drill hole angle is known, its nature should be reported.</i></p> <p><i>If it is not known and only the down hole lengths are reported, there should be a clear statement to this effect (e.g. 'down hole length, true width not known').</i></p>	<p>Not applicable for surface geochemistry data.</p>
Diagrams	<p><i>Appropriate maps and sections (with scales) and tabulations of intercepts should be included for any significant discovery being reported. These should include, but not be limited to a plan view of drill hole collar locations and appropriate sectional views.</i></p>	<p>Figures in the report present best-available information and is sufficient for this level of analysis.</p>



ASX ANNOUNCEMENT

18 September 2024

Balanced reporting	<i>Where comprehensive reporting of all Exploration Results is not practicable, representative reporting of both low and high grades and/or widths should be practiced to avoid misleading reporting of Exploration Results.</i>	The Competent Person considers that appropriate cautions have been included in this report that alert the reader to the nature of the results. Elements material to this announcement have been reported for practicality.
Other substantive exploration data	<i>Other exploration data, if meaningful and material, should be reported including (but not limited to): geological observations; geophysical survey results; geochemical survey results; bulk samples – size and method of treatment; metallurgical test results; bulk density, groundwater, geotechnical and rock characteristics; potential deleterious or contaminating substances.</i>	All significant results are reported.
Further work	<i>The nature and scale of planned further work (e.g. tests for lateral extensions or depth extensions or large-scale step-out drilling). Diagrams clearly highlighting the areas of possible extensions, including the main geological interpretations and future drilling areas, provided this information is not commercially sensitive.</i>	Exploration at the Project is ongoing with continual appraisal of targets over the tenement package to prioritise future work, but new results present here show clear potential for grid infill around high priority targets. The Competent Person advises that geological interpretation is ongoing and subject to change with the most current understandings presented in this report at the time of writing.

For personal use only