

# Sampling Completed at Kiabye Gold Project

## HIGHLIGHTS

---

- Soil and Rock Chip Sampling completed at highly prospective Kiabye Gold Project
- Sampling targeted the historical gold sites and geophysical anomalies
- A total of 658 soil and 44 rock chip samples were collected
- Samples have been lodged at Intertek Laboratories primarily for gold assay, rock samples will also undergo base metal analysis
- Red Mountain expects assay results in early October
- Follow up drilling planned pending assay results

Red Mountain Mining Limited (“**RMX**” or the “**Company**”) is pleased to advise that it has completed an initial phase of rock chip and soil sampling at the Kiabye Gold Project, over four exploration licenses that make up the project cover the central portion of the Kiabye Greenstone Belt in the Yilgarn’s Murchison Domain, southeast of Mount Magnet. The program undertook soil sampling over the 658 planned sites and was supplemented with 44 rock chip samples over quartz veins, sheared and altered rocks. The samples focused on historical gold results, infill sampling gaps and geophysical (EM) targets not previously followed up.

Sampling areas include Kiabye South where the historical shallow drill (RAB) site N15 (14m) reported **1m @3.45 g/t** in the last metre of the hole and is located near surface rock sample with 0.728ppm Au (RMX 5/8/2024). Soil samples were collected on 50m spaced grids and rocks of interest were also sampled along lines and grids. All samples have been lodged with Intertek Laboratories (Perth) with all soils and to be analysed by fire assay for Au while rocks are to be analysed for gold and base metals by fire assay and total acid digest. The expected turnaround time is 2 to 3 weeks with assay results to be reported early in October.

## ASX: RMX

Red Mountain Mining Ltd  
ACN 119 568 106

Australia and Canada based  
Gold and Battery metals explorer

[redmountainmining.com.au](http://redmountainmining.com.au)

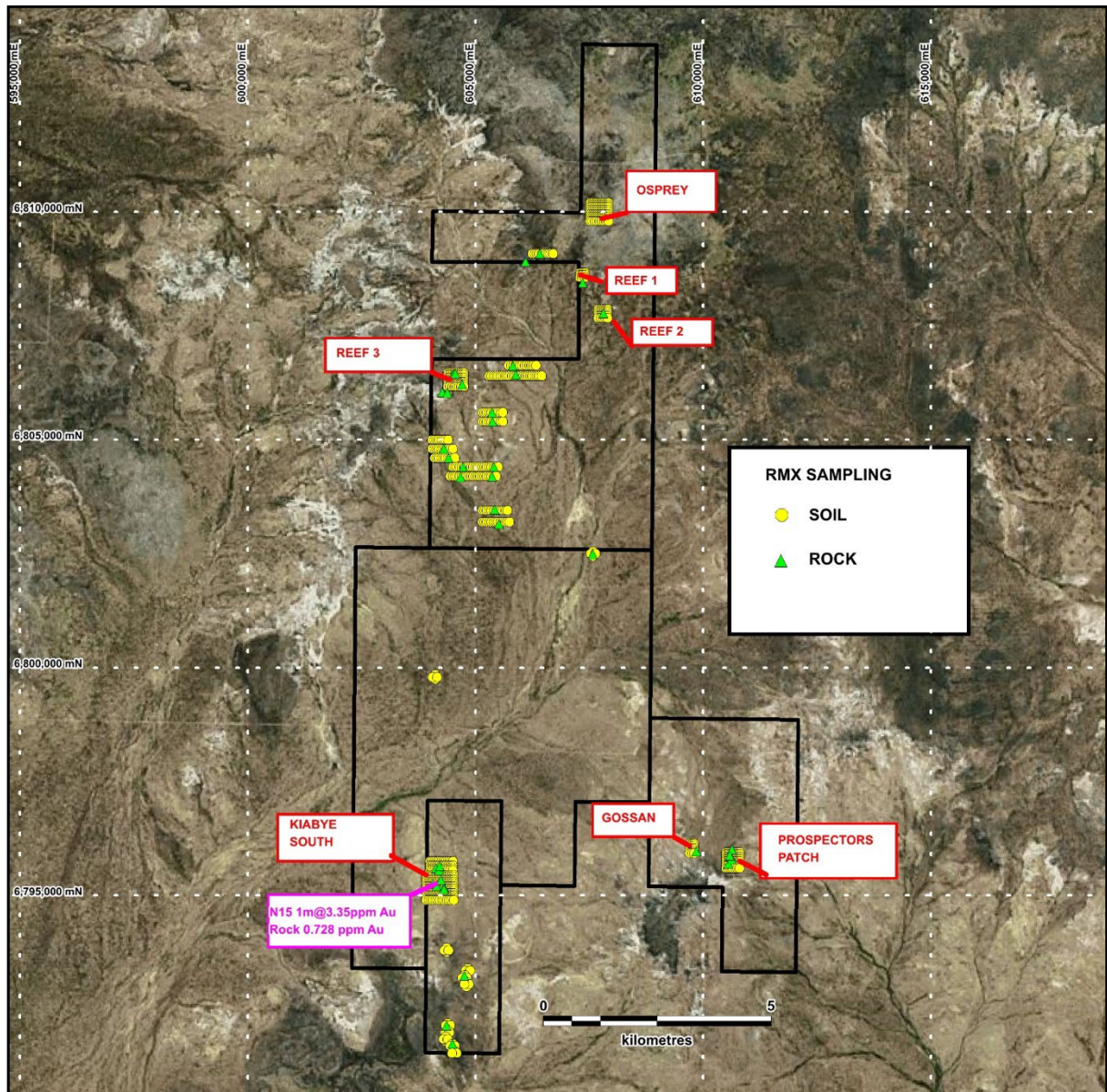
Red Mountain's ground inspection at historical RAB hole N15 observed that no follow-up, drilling or trenching was evident, at the original site (Figure 1). In addition, the original rock chip site P80748 (0.728ppm Au) was located within 20m of the drill site, see Table 1.



**Figure 1:** Historical RAB hole N15 (PVC) collar shown in the central frame with metabasalt (hornfels) subcrop in the foreground where sample KPR049 collected and within 20m of the rock sample P80748 was collected.

### Background

The four tenements have primarily been explored for base metals with limited gold exploration. Historical exploration focused on two areas, Kiabye Well North and South, Figure 2. Widely spaced sampling was undertaken in these areas with soil sampling producing a number of low order gold-in-soil anomalies but interpreted as being diluted by transported cover. At Kiabye Well South, Browns Creek Gold (1988-1989) drilled 34 shallow RAB holes, averaging around 11m deep and hole N15 reported **1m @3.45g/t** in the last metre of the 14m deep hole<sup>1</sup>.



**Figure 2:** Kiabye program sampling (658 soil and 44 rock chip samples) which targeted historical anomalous assays, EM anomalies, quartz reefs, gossans & known alluvial gold areas.

The previous tenement holders reported undertaking 50m by 200m spaced loam samples over 8km<sup>2</sup> across Kiabye Well North and South areas<sup>2</sup> but based on open file reports, no further work was undertaken due to their focus shifting to base metals in the adjoining ground to the east in the basal ultramafic rocks around Milgoos Peak, Narndee Igneous Complex. Therefore, the target areas are considered as having high residual potential.

<sup>1</sup> (ASX: ARN 21 October 2019)

<sup>2</sup> (ASX: ARN 5 October 2020)

For personal use only

The Kiabye Project covers a strike length of 23km<sup>2</sup> of the greenstone belt (Figure 3) with less than half covered by exploration samples from historical explorers and only around 7% was covered by prior holders. Recent VTEM and aeromagnetic data covers the entire tenement package and no geophysical anomalies have been followed up on the ground. RMX has compiled a database of historical work which will form the basis of the exploration program which will include infill soil sampling and drilling the unexplained soil and rock samples to deeper intervals.

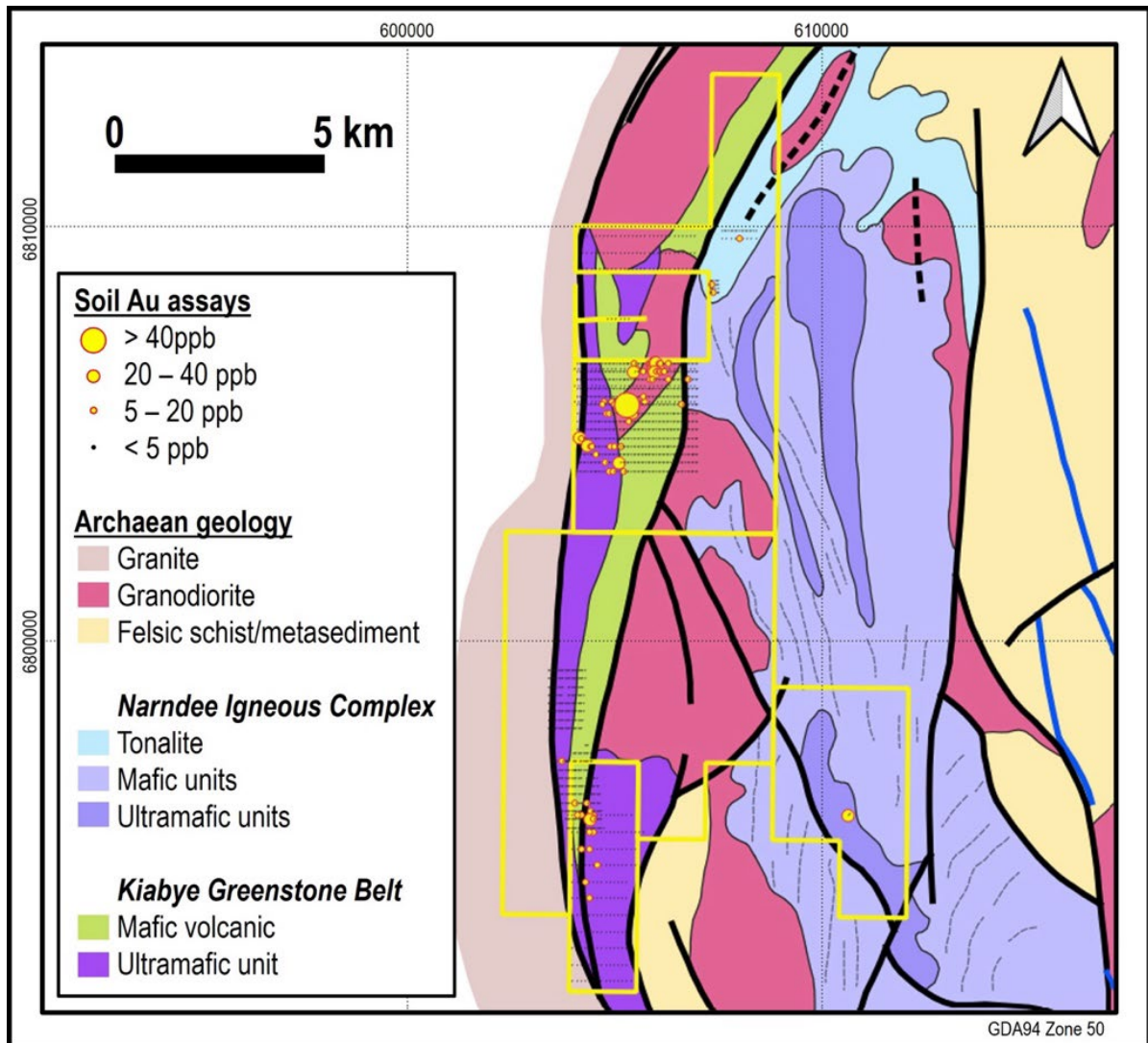


Figure 3: Historical Results soil and drill samples on simplified tectonic geology

For personal use only

For personal use only

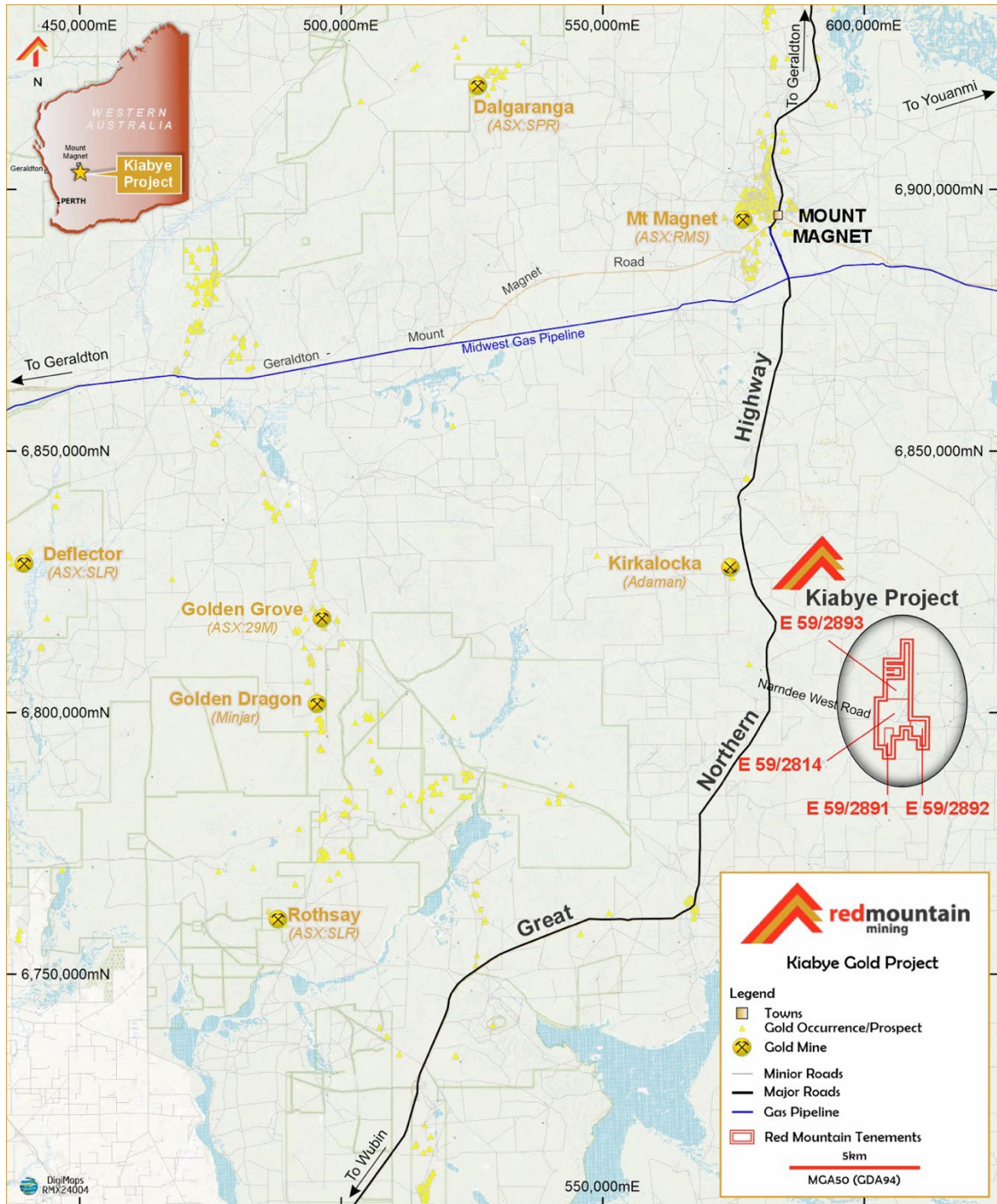


Figure 4: Tenement location Map with the licences covering approximately 111km<sup>2</sup>

Authorised for and on behalf of the Board,



**Mauro Piccini**  
Company Secretary

**About Red Mountain Mining**

Red Mountain Mining Limited (ASX: RMX) is a mineral exploration and development company. Red Mountain has a portfolio of critical minerals including gold, lithium, rare earth and base metal projects, located in Canada, Australia and USA. Red Mountain is progressing its Fry Lake project, based in the strategic Gold district in Ontario, Canada and the Kiabye Gold Project in Western Australia. In addition, Red Mountain's project portfolio includes the Monjebup Rare Earths Project, and Nevada Lithium Projects.

**Competent Person Statement**

The information in this announcement that relates to Exploration Results and other technical information complies with the 2012 Edition of the Australasian Code for Reporting of Exploration Results, Mineral Resources and Ore Reserves (JORC Code). It has been compiled and assessed under the supervision of contract geologist Mark Mitchell. Mr Mitchell is a Member of the Australasian Institute of Geoscientists and has sufficient experience that is relevant to the style of mineralisation and type of deposit under consideration and to the activity being undertaken to qualify as a Competent Person as defined in the 2012 Edition of the JORC Code. Mr Mitchell consents to the inclusion in this announcement of the matters based on his information in the form and context in which it appears.

**Disclaimer**

In relying on the above mentioned ASX announcement and pursuant to ASX Listing Rule 5.23.2, the Company confirms that it is not aware of any new information or data that materially affects the information included in the above-mentioned announcement.

**JOIN THE RED MOUNTAIN MINING INVESTOR HUB**

Visit <https://investorhub.redmountainmining.com.au> for access to the Investor Hub

For personal use only

Table 1: Historical Sample Locations (datum GDA94\_Z50)

ID	Easting	Northing	RL	Comment
N15	604328	6795156	424	Brown Creek 1988 drill hole
P90748	604316	6795152	424	Victory Gold 2013 rock chip sample

Table 2: Rock chip samples and brief descriptions (Datum GDA94\_z50)

Sample_ID	Easting	Northing	RL	Area	Comment
KPR013	606098	6808904	473	Infill North	Quartz vein recrystallised
KPR014	606411	6809080	473	Infill North	Heavily ferruginised altered basement with quartz vein
KPR015	607812	6807770	467	Reef 2	Grey quartz vein
KPR016	607356	6808439	470	Reef 1	Grey quartz vein with iron oxides
KPR017	604703	6806216	469	Reef 3	Altered silicified UM
KPR018	604273	6806040	479	Reef 3	red-cream altered ferruginised quartz vein
KPR019	605817	6806621	454	Infill North	altered silicified mafic
KPR020	605363	6805591	459	Infill North	red-cream altered ferruginised quartz vein
KPR021	605375	6805394	455	Infill North	red-cream altered ferruginised quartz vein
KPR022	604307	6804801	450	Infill North	dark grey siliceous rock/vein
KPR023	604415	6804603	449	Infill North	ferruginised mafic with quartz vein
KPR024	604497	6791749	437	EM	siliceous/ferruginous caprock
KPR025	604726	6804405	447	Infill North	red ferruginous quartz vein in talc chlorite schist
KPR026	604667	6804180	446	Infill North	ferruginous altered talc chlorite schist
KPR027	605401	6804400	449	Infill North	red ferruginous quartz vein
KPR028	605365	6804188	447	Infill North	red, cream, white altered quartz vein
KPR029	605423	6803471	441	Infill North	red grey ferruginous quartz vein
KPR030	605517	6803149	439	Infill North	altered ferruginous quartz/gossan
KPR031	604129	6795598	427	Kiabye South	altered calcretised UM with chert
KPR032	604054	6795250	429	Kiabye South	micaceous felsic rock/granite with green oxide bands
KPR033	604755	6793238	431	EM	altered ferruginous quartz
KPR034	607575	6802494	434	EM	silicified altered mafic with iron oxides
KPR035	604216	6795585	427	Kiabye South	epidote altered UM, serpentinite
KPR036	604197	6795549	428	Kiabye South	banded ultramafic with epidote alteration
KPR037	604381	6806030	475	Reef 3	secondary siliceous caprock/silcrete
KPR038	604211	6795646	425	Kiabye South	altered UM peridotite? With epidote
KPR039	610551	6795699	458	Prospectors Patch	siliceous caprock with chert bands
KPR040	610632	6795797	454	Prospectors Patch	green epidote altered UM
KPR041	604368	6792141	441	EM	siliceous altered caprock over mafic?
KPR042	605885	6806432	452	Infill North	N-S shear, talc-chlorite schist + qtz vein, 330 strike, vert to WSW dip
KPR043	604514	6806444	475	Reef 3	N-S strike, talc-chlorite schist, uprooted tree exposure
KPR044	604534	6806449	476	Reef 3	Quartz vein, red Fe oxides, 0.3m wide, strike 035, steep dip to 120
KPR045	604559	6806447	476	Reef 3	Quartz vein, some cavities ex-sulphide?, 1m wide strike 0202 steep dip ESE
KPR046	604138	6795209	425	Kiabye South	Silicified schist + calcrete, strike 360 vertical dip
KPR047	604169	6795235	425	Kiabye South	Calcretised green schist east of granite intrusion strike 020 vert dip
KPR048	604138	6795208	426	Kiabye South	Talc-chlorite schist strike 360 vert dip
KPR049	604313	6795156	424	Kiabye South	Repeat site P80748 (0.728ppmAu) metabasalt, strike north, vert dip, joint planes
KPR050	604320	6795150	424	Kiabye South	Gabbro near P80748, east of metabasalt
KPR051	604312	6795132	425	Kiabye South	Swamp outcrop metabasalt joint planes
KPR052	604245	6795333	427	Kiabye South	N-S pit calcretised, epidote serpentinite with silicified/chert zones 25mL x2.5mWx2mD
KPR053	610633	6796004	441	Prospectors Patch	Loading ramp talc-chlorite schist strike 340 vert dip extensive calcretisation
KPR054	610585	6795874	454	Prospectors Patch	Epidote altered UM, serpentinite? On margin of less deformed UM
KPR055	610585	6795872	454	Prospectors Patch	Phlogopite rich UM, coarse books, talcose
KPR056	609854	6795967	459	Fragile Au	Narrow quartz-carbonate vein, <1m wide, strike 340

Table 3: Soil Samples (Datum GDA94 z50)

Sample ID	Easting	Northing	Area	Comment
KP0211	606250	6809080	Infill Lines	Red hardpan with red gravel
KP0212	606300	6809080	Infill Lines	Red hardpan with red gravel
KP0213	606350	6809080	Infill Lines	Red hardpan with red gravel
KP0214	606400	6809080	Infill Lines	Red hardpan with red gravel
KP0215	606450	6809080	Infill Lines	Red Hardpan
KP0216	606500	6809080	Infill Lines	Red Hardpan
KP0217	606550	6809080	Infill Lines	Red Hardpan
KP0218	606600	6809080	Infill Lines	Red Hardpan
KP0219	606650	6809080	Infill Lines	Red Hardpan
KP0220	606700	6809080	Infill Lines	Red Hardpan
KP0221	607520	6810200	Osprey Grid	Yellow sand with red rocks
KP0222	607570	6810200	Osprey Grid	Yellow sand with red rocks
KP0223	607620	6810200	Osprey Grid	Yellow sand with red rocks
KP0224	607670	6810200	Osprey Grid	Yellow sand with red rocks
KP0225	607720	6810200	Osprey Grid	Yellow sand with red gravel
KP0226	607770	6810200	Osprey Grid	Yellow sand with red gravel
KP0227	607820	6810200	Osprey Grid	Yellow sand with red gravel
KP0228	607870	6810200	Osprey Grid	Yellow sand with red gravel
KP0229	607920	6810200	Osprey Grid	Yellow sand with red gravel
KP0230	607520	6810150	Osprey Grid	Yellow sand with red gravel
KP0231	607570	6810150	Osprey Grid	Yellow sand with red gravel
KP0232	607620	6810150	Osprey Grid	Yellow sand with red gravel
KP0233	607670	6810150	Osprey Grid	Yellow sand with red gravel
KP0234	607720	6810150	Osprey Grid	Yellow sand with red gravel
KP0235	607770	6810150	Osprey Grid	Yellow sand with red gravel
KP0236	607820	6810150	Osprey Grid	Orange sand
KP0237	607870	6810150	Osprey Grid	Orange sand
KP0238	607920	6810150	Osprey Grid	Orange sand
KP0239	607520	6810100	Osprey Grid	Orange sand with red gravel
KP0240	607570	6810100	Osprey Grid	Orange sand with red gravel
KP0241	607620	6810100	Osprey Grid	Yellow sand
KP0242	607670	6810100	Osprey Grid	Yellow sand
KP0243	607720	6810100	Osprey Grid	Orange sand
KP0244	607770	6810100	Osprey Grid	Orange sand
KP0245	607820	6810100	Osprey Grid	Orange sand
KP0246	607870	6810100	Osprey Grid	Orange sand
KP0247	607920	6810100	Osprey Grid	Orange sand
KP0248	607520	6810050	Osprey Grid	Orange sand
KP0249	607570	6810050	Osprey Grid	Yellow sand with red gravel
KP0250	607620	6810050	Osprey Grid	Yellow sand with red gravel
KP0251	607670	6810050	Osprey Grid	Yellow sand with red gravel
KP0252	607720	6810050	Osprey Grid	Yellow sand with red gravel
KP0253	607770	6810050	Osprey Grid	Yellow sand with red gravel
KP0254	607820	6810050	Osprey Grid	Yellow sand with red gravel
KP0255	607870	6810050	Osprey Grid	Yellow sand with red gravel
KP0256	607920	6810050	Osprey Grid	Yellow sand with red gravel
KP0257	607520	6810000	Osprey Grid	Yellow sand with red gravel
KP0258	607570	6810000	Osprey Grid	Yellow sand with red gravel
KP0259	607620	6810000	Osprey Grid	Yellow sand with red gravel
KP0260	607670	6810000	Osprey Grid	Yellow sand with red gravel
KP0261	607720	6810000	Osprey Grid	Yellow sand with red gravel
KP0262	607770	6810000	Osprey Grid	Yellow sand with red gravel
KP0263	607820	6810000	Osprey Grid	Yellow sand with red gravel
KP0264	607870	6810000	Osprey Grid	Yellow sand with red gravel
KP0265	607920	6810000	Osprey Grid	Yellow sand with red gravel
KP0266	607520	6809950	Osprey Grid	Orange sand with red gravel
KP0267	607570	6809950	Osprey Grid	Orange sand with red gravel
KP0268	607620	6809950	Osprey Grid	Orange sand with red gravel
KP0269	607670	6809950	Osprey Grid	Orange sand with red gravel
KP0270	607720	6809950	Osprey Grid	Orange sand with red gravel
KP0271	607770	6809950	Osprey Grid	Orange sand with red gravel
KP0272	607820	6809950	Osprey Grid	Orange sand with red gravel
KP0273	607870	6809950	Osprey Grid	Orange sand with red gravel
KP0274	607920	6809950	Osprey Grid	Orange sand with red gravel
KP0275	607520	6809900	Osprey Grid	Orange sand with red gravel
KP0276	607570	6809900	Osprey Grid	Orange sand with red gravel
KP0277	607620	6809900	Osprey Grid	Orange sand with red gravel
KP0278	607670	6809900	Osprey Grid	Orange sand with red gravel
KP0279	607720	6809900	Osprey Grid	Orange sand with red gravel
KP0280	607770	6809900	Osprey Grid	Orange sand with red gravel
KP0281	607820	6809900	Osprey Grid	Orange sand with red gravel
KP0282	607870	6809900	Osprey Grid	Orange sand with red gravel
KP0283	607920	6809900	Osprey Grid	Orange sand with red gravel
KP0284	607920	6809900	Osprey Grid	DUPLICATE OF 283
KP0285	607520	6809850	Osprey Grid	Yellow sand
KP0286	607570	6809850	Osprey Grid	Yellow sand
KP0287	607620	6809850	Osprey Grid	Yellow sand
KP0288	607670	6809850	Osprey Grid	Yellow sand
KP0289	607720	6809850	Osprey Grid	Yellow sand
KP0290	607770	6809850	Osprey Grid	Yellow sand
KP0291	607820	6809850	Osprey Grid	Yellow sand
KP0292	607870	6809850	Osprey Grid	Yellow sand
KP0293	607920	6809850	Osprey Grid	Yellow sand
KP0294	607520	6809800	Osprey Grid	Yellow sand
KP0295	607570	6809800	Osprey Grid	Yellow sand
KP0296	607620	6809800	Osprey Grid	Yellow sand
KP0297	607670	6809800	Osprey Grid	Yellow sand
KP0298	607720	6809800	Osprey Grid	Yellow sand
KP0299	607770	6809800	Osprey Grid	Yellow sand
KP0300	607820	6809800	Osprey Grid	Yellow sand
KP0301	607870	6809800	Osprey Grid	Yellow sand
KP0302	607920	6809800	Osprey Grid	Red Hardpan
KP0303	607700	6807870	Quartz Reef Fragile Specimens	Red Hardpan
KP0304	607750	6807870	Quartz Reef Fragile Specimens	Light brown hardpan
KP0305	607800	6807870	Quartz Reef Fragile Specimens	Red sticky clay
KP0306	607850	6807870	Quartz Reef Fragile Specimens	Red Hardpan
KP0307	607900	6807870	Quartz Reef Fragile Specimens	Red Hardpan
KP0308	607700	6807820	Quartz Reef Fragile Specimens	Red Hardpan
KP0309	607750	6807820	Quartz Reef Fragile Specimens	Red Hardpan



Sample ID	Easting	Northing	Area	Comment
KP0310	607800	6807820	Quartz Reef Fragile Specimens	Red Hardpan
KP0311	607850	6807820	Quartz Reef Fragile Specimens	Red Hardpan
KP0312	607900	6807820	Quartz Reef Fragile Specimens	Red Hardpan
KP0313	607700	6807770	Quartz Reef Fragile Specimens	Red Hardpan
KP0314	607750	6807770	Quartz Reef Fragile Specimens	Red Hardpan
KP0315	607800	6807770	Quartz Reef Fragile Specimens	Red Hardpan
KP0316	607850	6807770	Quartz Reef Fragile Specimens	Red Hardpan
KP0317	607900	6807770	Quartz Reef Fragile Specimens	Red Hardpan
KP0318	607700	6807720	Quartz Reef Fragile Specimens	Red Hardpan
KP0319	607750	6807720	Quartz Reef Fragile Specimens	Red Hardpan
KP0320	607800	6807720	Quartz Reef Fragile Specimens	Red Hardpan
KP0321	607850	6807720	Quartz Reef Fragile Specimens	Red Hardpan
KP0322	607900	6807720	Quartz Reef Fragile Specimens	Red Hardpan
KP0323	607700	6807670	Quartz Reef Fragile Specimens	Red Hardpan
KP0324	607750	6807670	Quartz Reef Fragile Specimens	Red Hardpan
KP0325	607800	6807670	Quartz Reef Fragile Specimens	Red Hardpan
KP0326	607850	6807670	Quartz Reef Fragile Specimens	Light brown hardpan with calcrete
KP0327	607900	6807670	Quartz Reef Fragile Specimens	Red Hardpan
KP0328	607295	6808665	Bobcat Reef stolen	Red Hardpan
KP0329	607345	6808665	Bobcat Reef stolen	Red Hardpan
KP0330	607395	6808665	Bobcat Reef stolen	Red Hardpan
KP0331	607295	6808615	Bobcat Reef stolen	Red Hardpan
KP0332	607345	6808615	Bobcat Reef stolen	Red Hardpan
KP0333	607395	6808615	Bobcat Reef stolen	Red Hardpan
KP0334	607295	6808565	Bobcat Reef stolen	Red Hardpan
KP0335	607345	6808565	Bobcat Reef stolen	Red Hardpan
KP0336	607395	6808565	Bobcat Reef stolen	Red Hardpan
KP0338	604390	6806465	Black Slate iron and quartz reef	Light brown hardpan, hit rock
KP0339	604440	6806465	Black Slate iron and quartz reef	Light brown hardpan, hit rock
KP0340	604490	6806465	Black Slate iron and quartz reef	Light brown hardpan, hit rock
KP0341	604540	6806465	Black Slate iron and quartz reef	Light brown hardpan, hit rock
KP0342	604590	6806465	Black Slate iron and quartz reef	Light brown hardpan, hit rock
KP0343	604640	6806465	Black Slate iron and quartz reef	Light brown hardpan, hit rock
KP0344	604690	6806465	Black Slate iron and quartz reef	Light brown hardpan, hit rock
KP0345	604740	6806465	Black Slate iron and quartz reef	Light brown hardpan, hit rock
KP0346	604390	6806415	Black Slate iron and quartz reef	Light brown hardpan, hit rock
KP0347	604440	6806415	Black Slate iron and quartz reef	Light brown hardpan, hit rock
KP0348	604490	6806415	Black Slate iron and quartz reef	Orange hardpan with red gravel
KP0349	604540	6806415	Black Slate iron and quartz reef	Orange hardpan with red gravel
KP0350	604590	6806415	Black Slate iron and quartz reef	Orange hardpan with red gravel
KP0351	604640	6806415	Black Slate iron and quartz reef	Orange hardpan with red gravel
KP0352	604690	6806415	Black Slate iron and quartz reef	Orange hardpan with red gravel
KP0353	604740	6806415	Black Slate iron and quartz reef	Orange hardpan with red gravel
KP0354	604390	6806365	Black Slate iron and quartz reef	Orange hardpan with red gravel
KP0355	604440	6806365	Black Slate iron and quartz reef	Orange hardpan with red gravel
KP0356	604490	6806365	Black Slate iron and quartz reef	Orange hardpan with red gravel
KP0357	604540	6806365	Black Slate iron and quartz reef	Orange hardpan with red gravel
KP0358	604590	6806365	Black Slate iron and quartz reef	Light brown hardpan, on breakaway, hit rock
KP0359	604640	6806365	Black Slate iron and quartz reef	Orange hardpan
KP0360	604690	6806365	Black Slate iron and quartz reef	Orange hardpan
KP0361	604740	6806365	Black Slate iron and quartz reef	Orange hardpan with red gravel
KP0362	604390	6806315	Black Slate iron and quartz reef	Orange hardpan with red gravel
KP0363	604440	6806315	Black Slate iron and quartz reef	Orange hardpan with red gravel
KP0364	604490	6806315	Black Slate iron and quartz reef	Orange hardpan with red rocks
KP0365	604540	6806315	Black Slate iron and quartz reef	Orange hardpan with red rocks
KP0366	604590	6806315	Black Slate iron and quartz reef	Brown hardpan, on breakaway
KP0367	604640	6806315	Black Slate iron and quartz reef	Orange hardpan with red gravel
KP0368	604690	6806315	Black Slate iron and quartz reef	Orange hardpan with red gravel
KP0369	604740	6806315	Black Slate iron and quartz reef	Orange hardpan with red gravel
KP0370	604390	6806265	Black Slate iron and quartz reef	Red Hardpan
KP0371	604440	6806265	Black Slate iron and quartz reef	Red Hardpan
KP0372	604490	6806265	Black Slate iron and quartz reef	Red Hardpan
KP0373	604540	6806265	Black Slate iron and quartz reef	On breakaway
KP0374	604590	6806265	Black Slate iron and quartz reef	On breakaway
KP0375	604640	6806265	Black Slate iron and quartz reef	On breakaway
KP0376	604690	6806265	Black Slate iron and quartz reef	On breakaway
KP0377	604740	6806265	Black Slate iron and quartz reef	On breakaway
KP0378	604390	6806215	Black Slate iron and quartz reef	Red hardpan with red gravel
KP0379	604440	6806215	Black Slate iron and quartz reef	Red hardpan with red gravel
KP0380	604490	6806215	Black Slate iron and quartz reef	On breakaway
KP0382	604540	6806215	Black Slate iron and quartz reef	On breakaway
KP0383	604590	6806215	Black Slate iron and quartz reef	Red Hardpan
KP0384	604640	6806215	Black Slate iron and quartz reef	Red Hardpan
KP0385	604690	6806215	Black Slate iron and quartz reef	Red Hardpan
KP0386	604740	6806215	Black Slate iron and quartz reef	On breakaway
KP0387	604390	6806165	Black Slate iron and quartz reef	Red Hardpan
KP0388	604440	6806165	Black Slate iron and quartz reef	Red Hardpan
KP0389	604490	6806165	Black Slate iron and quartz reef	Red Hardpan
KP0390	604540	6806165	Black Slate iron and quartz reef	Light brown hardpan
KP0391	604590	6806165	Black Slate iron and quartz reef	Red Hardpan
KP0392	604640	6806165	Black Slate iron and quartz reef	Red Hardpan
KP0393	604690	6806165	Black Slate iron and quartz reef	Red Hardpan
KP0394	604740	6806165	Black Slate iron and quartz reef	Red Hardpan
KP0395	605730	6806630	Infill Lines	Red Hardpan
KP0396	605780	6806630	Infill Lines	Red Hardpan
KP0397	605830	6806630	Infill Lines	Red Hardpan
KP0398	605880	6806630	Infill Lines	Red hardpan with quartz
KP0399	605930	6806630	Infill Lines	Red hardpan with quartz
KP0400	605980	6806630	Infill Lines	Red hardpan with quartz
KP0401	606030	6806630	Infill Lines	Red hardpan with quartz
KP0402	606080	6806630	Infill Lines	Red Hardpan
KP0403	606130	6806630	Infill Lines	Light brown hardpan with calcrete
KP0404	606180	6806630	Infill Lines	Red Hardpan
KP0405	606230	6806630	Infill Lines	Red Hardpan
KP0406	606280	6806630	Infill Lines	Red Hardpan
KP0407	606330	6806630	Infill Lines	Red Hardpan
KP0408	605300	6806400	Infill Lines	Red Hardpan
KP0409	605350	6806400	Infill Lines	Red Hardpan
KP0410	605400	6806400	Infill Lines	Red hardpan with quartz
KP0411	605450	6806400	Infill Lines	Red Hardpan

For personal use only

Sample ID	Easting	Northing	Area	Comment
KP0412	605500	6806400	Infill Lines	Red Hardpan
KP0413	605550	6806400	Infill Lines	Red Hardpan
KP0414	605600	6806400	Infill Lines	Red Hardpan
KP0415	605650	6806400	Infill Lines	Red Hardpan
KP0416	605700	6806400	Infill Lines	Red Hardpan
KP0417	605750	6806400	Infill Lines	Red Hardpan
KP0418	605800	6806400	Infill Lines	Red hardpan with quartz
KP0419	605850	6806400	Infill Lines	Red hardpan with quartz
KP0420	605900	6806400	Infill Lines	Red hardpan with quartz
KP0421	605950	6806400	Infill Lines	Red Hardpan
KP0422	606000	6806400	Infill Lines	Red Hardpan
KP0423	606050	6806400	Infill Lines	Red Hardpan
KP0424	606100	6806400	Infill Lines	Red Hardpan
KP0425	606150	6806400	Infill Lines	Red Hardpan
KP0426	606200	6806400	Infill Lines	Red Hardpan
KP0427	606250	6806400	Infill Lines	Red Hardpan
KP0428	606300	6806400	Infill Lines	Red Hardpan
KP0429	606350	6806400	Infill Lines	Brown hardpan, hit calcrete
KP0430	606400	6806400	Infill Lines	Brown hardpan, hit calcrete
KP0431	606450	6806400	Infill Lines	Red Hardpan
KP0433	605150	6805600	Infill Lines	On or near granite outcrop
KP0434	605200	6805600	Infill Lines	On or near granite outcrop
KP0435	605250	6805600	Infill Lines	On or near granite outcrop
KP0436	605300	6805600	Infill Lines	On or near granite outcrop
KP0437	605350	6805600	Infill Lines	On or near granite outcrop
KP0438	605400	6805600	Infill Lines	On or near granite outcrop
KP0439	605450	6805600	Infill Lines	On or near granite outcrop
KP0440	605500	6805600	Infill Lines	On or near granite outcrop
KP0441	605550	6805600	Infill Lines	On or near granite outcrop
KP0442	605600	6805600	Infill Lines	On or near granite outcrop
KP0443	605150	6805400	Infill Lines	Red Hardpan
KP0444	605200	6805400	Infill Lines	Red Hardpan
KP0445	605250	6805400	Infill Lines	Red Hardpan
KP0446	605300	6805400	Infill Lines	Red Hardpan
KP0447	605350	6805400	Infill Lines	Red Hardpan
KP0448	605400	6805400	Infill Lines	Red Hardpan
KP0449	605450	6805400	Infill Lines	Red Hardpan
KP0450	605500	6805400	Infill Lines	Red Hardpan
KP0451	605550	6805400	Infill Lines	Red Hardpan
KP0452	605600	6805400	Infill Lines	Red Hardpan
KP0453	604050	6805000	Infill Lines	Light brown hardpan
KP0454	604100	6805000	Infill Lines	Light brown hardpan
KP0455	604150	6805000	Infill Lines	Red Hardpan
KP0456	604200	6805000	Infill Lines	Red Hardpan
KP0457	604250	6805000	Infill Lines	Red Hardpan
KP0458	604300	6805000	Infill Lines	Red Hardpan
KP0459	604350	6805000	Infill Lines	Red Hardpan
KP0460	604400	6805000	Infill Lines	On granite outcrop
KP0461	604050	6804800	Infill Lines	Red Hardpan
KP0462	604100	6804800	Infill Lines	Light brown hardpan
KP0463	604150	6804800	Infill Lines	Light brown hardpan
KP0464	604200	6804800	Infill Lines	Red Hardpan
KP0465	604250	6804800	Infill Lines	Red Hardpan
KP0466	604300	6804800	Infill Lines	Red Hardpan
KP0467	604350	6804800	Infill Lines	Red Hardpan
KP0468	604400	6804800	Infill Lines	Red Hardpan
KP0469	604450	6804800	Infill Lines	On granite outcrop
KP0470	604500	6804800	Infill Lines	Red Hardpan
KP0471	604100	6804600	Infill Lines	Red Hardpan
KP0472	604150	6804600	Infill Lines	Red Hardpan
KP0473	604200	6804600	Infill Lines	Red Hardpan
KP0474	604250	6804600	Infill Lines	Red Hardpan
KP0475	604300	6804600	Infill Lines	Red Hardpan
KP0476	604350	6804600	Infill Lines	Red Hardpan
KP0477	604400	6804600	Infill Lines	Red Hardpan
KP0478	604450	6804600	Infill Lines	Red Hardpan
KP0479	604500	6804600	Infill Lines	Red Hardpan
KP0480	604550	6804600	Infill Lines	Red Hardpan
KP0482	607577	6802498	5250-01	Red Hardpan
KP0483	607577	6802448	5250-02	Red Hardpan
KP0484	607577	6802548	5250-03	Red Hardpan
KP0485	607527	6802498	5250-04	Red Hardpan
KP0486	607627	6802498	5250-05	Red Hardpan
KP0487	604500	6804400	Infill Lines	Red hardpan with quartz
KP0488	604550	6804400	Infill Lines	Red Hardpan
KP0489	604600	6804400	Infill Lines	Red Hardpan
KP0490	604650	6804400	Infill Lines	Red Hardpan
KP0491	604700	6804400	Infill Lines	Red Hardpan
KP0492	604750	6804400	Infill Lines	Red Hardpan
KP0493	604800	6804400	Infill Lines	Red Hardpan
KP0494	604850	6804400	Infill Lines	Red Hardpan
KP0495	604900	6804400	Infill Lines	Red Hardpan
KP0496	604950	6804400	Infill Lines	Red Hardpan
KP0497	605000	6804400	Infill Lines	Red Hardpan
KP0498	605050	6804400	Infill Lines	Red Hardpan
KP0499	605100	6804400	Infill Lines	Red Hardpan
KP0500	605150	6804400	Infill Lines	Red Hardpan
KP0501	605200	6804400	Infill Lines	Red hardpan with quartz
KP0502	605250	6804400	Infill Lines	Red hardpan with quartz
KP0503	605300	6804400	Infill Lines	Red hardpan with quartz
KP0504	605350	6804400	Infill Lines	Red hardpan with quartz
KP0505	605400	6804400	Infill Lines	Red hardpan with quartz
KP0506	605450	6804400	Infill Lines	Red Hardpan
KP0507	605500	6804400	Infill Lines	Red Hardpan
KP0508	604450	6804200	Infill Lines	Red Hardpan
KP0509	604500	6804200	Infill Lines	Red Hardpan
KP0510	604550	6804200	Infill Lines	Red Hardpan
KP0511	604600	6804200	Infill Lines	Red Hardpan
KP0512	604650	6804200	Infill Lines	Red Hardpan
KP0513	604700	6804200	Infill Lines	Red hardpan with quartz

For personal use only

Sample ID	Easting	Northing	Area	Comment
KP0514	604750	6804200	Infill Lines	Red Hardpan
KP0515	604800	6804200	Infill Lines	Red Hardpan
KP0516	604850	6804200	Infill Lines	Red Hardpan
KP0517	604900	6804200	Infill Lines	Red Hardpan
KP0518	604950	6804200	Infill Lines	Red Hardpan
KP0519	605000	6804200	Infill Lines	Red Hardpan
KP0520	605050	6804200	Infill Lines	Red Hardpan
KP0521	605100	6804200	Infill Lines	Red Hardpan
KP0522	605150	6804200	Infill Lines	Red Hardpan
KP0523	605200	6804200	Infill Lines	Red Hardpan
KP0524	605250	6804200	Infill Lines	Red Hardpan
KP0525	605300	6804200	Infill Lines	Red Hardpan
KP0526	605350	6804200	Infill Lines	Red Hardpan
KP0527	605400	6804200	Infill Lines	Red Hardpan
KP0528	605450	6804200	Infill Lines	Red Hardpan
KP0530	605150	6803450	Infill Lines	Red Hardpan
KP0531	605200	6803450	Infill Lines	Red Hardpan
KP0532	605250	6803450	Infill Lines	Red Hardpan
KP0533	605300	6803450	Infill Lines	Red Hardpan
KP0534	605350	6803450	Infill Lines	Red Hardpan
KP0535	605400	6803450	Infill Lines	Red Hardpan
KP0536	605450	6803450	Infill Lines	Red Hardpan
KP0537	605500	6803450	Infill Lines	Red Hardpan
KP0538	605550	6803450	Infill Lines	Red Hardpan
KP0539	605600	6803450	Infill Lines	Red Hardpan
KP0540	605650	6803450	Infill Lines	Red Hardpan
KP0541	605700	6803450	Infill Lines	Red Hardpan
KP0542	605150	6803200	Infill Lines	Red Hardpan
KP0543	605200	6803200	Infill Lines	Red Hardpan
KP0544	605250	6803200	Infill Lines	Red Hardpan
KP0545	605300	6803200	Infill Lines	Red Hardpan
KP0546	605350	6803200	Infill Lines	Red Hardpan
KP0547	605400	6803200	Infill Lines	Red Hardpan
KP0548	605450	6803200	Infill Lines	Red Hardpan
KP0549	605500	6803200	Infill Lines	Red Hardpan
KP0550	605550	6803200	Infill Lines	Red Hardpan
KP0551	605600	6803200	Infill Lines	Red Hardpan
KP0552	605650	6803200	Infill Lines	Red Hardpan
KP0553	605700	6803200	Infill Lines	Red Hardpan
KP0554	605750	6803200	Infill Lines	Red Hardpan
KP0555	604112	6799794	5430-01	Red Hardpan
KP0556	604112	6799744	5430-02	Red Hardpan
KP0557	604112	6799844	5430-03	Red Hardpan
KP0558	604062	6799794	5430-04	Red Hardpan
KP0559	604162	6799794	5430-05	Red Hardpan
KP0560	604000	6795750	Kiabye Central South	Red hardpan with black slate
KP0561	604050	6795750	Kiabye Central South	Red hardpan with black slate
KP0562	604100	6795750	Kiabye Central South	Red hardpan with black slate
KP0563	604150	6795750	Kiabye Central South	Red hardpan with black slate
KP0564	604200	6795750	Kiabye Central South	Red hardpan with black slate
KP0565	604250	6795750	Kiabye Central South	Red hardpan with black slate
KP0566	604300	6795750	Kiabye Central South	Red hardpan with black slate
KP0567	604350	6795750	Kiabye Central South	Red hardpan with black slate
KP0568	604400	6795750	Kiabye Central South	Red hardpan with black slate
KP0569	604450	6795750	Kiabye Central South	Red hardpan with black slate
KP0570	604500	6795750	Kiabye Central South	Red hardpan with black slate
KP0571	604000	6795650	Kiabye Central South	Red Hardpan
KP0572	604050	6795650	Kiabye Central South	Red Hardpan
KP0573	604100	6795650	Kiabye Central South	Red Hardpan
KP0574	604150	6795650	Kiabye Central South	Red Hardpan
KP0575	604200	6795650	Kiabye Central South	Red Hardpan
KP0576	604250	6795650	Kiabye Central South	Red Hardpan
KP0577	604300	6795650	Kiabye Central South	Red Hardpan
KP0578	604350	6795650	Kiabye Central South	Red Hardpan
KP0579	604400	6795650	Kiabye Central South	Red Hardpan
KP0580	604450	6795650	Kiabye Central South	Red Hardpan
KP0581	604500	6795650	Kiabye Central South	Red Hardpan
KP0583	604000	6795600	Kiabye Central South	Red Hardpan
KP0584	604050	6795600	Kiabye Central South	Red Hardpan
KP0585	604100	6795600	Kiabye Central South	On granite outcrop
KP0586	604150	6795600	Kiabye Central South	Red Hardpan
KP0587	604200	6795600	Kiabye Central South	Red Hardpan
KP0588	604250	6795600	Kiabye Central South	Red Hardpan
KP0589	604300	6795600	Kiabye Central South	Red Hardpan
KP0590	604350	6795600	Kiabye Central South	Red Hardpan
KP0591	604400	6795600	Kiabye Central South	Red hardpan with black slate
KP0592	604450	6795600	Kiabye Central South	Red hardpan with black slate
KP0593	604500	6795600	Kiabye Central South	Red Hardpan
KP0594	604000	6795550	Kiabye Central South	Red Hardpan
KP0595	604050	6795550	Kiabye Central South	Red Hardpan
KP0596	604100	6795550	Kiabye Central South	Red Hardpan
KP0597	604150	6795550	Kiabye Central South	Red Hardpan
KP0598	604200	6795550	Kiabye Central South	Red Hardpan
KP0599	604250	6795550	Kiabye Central South	Red Hardpan
KP0600	604300	6795550	Kiabye Central South	Red Hardpan
KP0601	604350	6795550	Kiabye Central South	Red Hardpan
KP0602	604400	6795550	Kiabye Central South	Red Hardpan
KP0603	604450	6795550	Kiabye Central South	Red hardpan with black slate
KP0604	604500	6795550	Kiabye Central South	Red hardpan with black slate
KP0605	603920	6795450	Kiabye South Grid	Red Hardpan
KP0606	603970	6795450	Kiabye South Grid	Red Hardpan
KP0607	604020	6795450	Kiabye South Grid	On granite outcrop
KP0608	604070	6795450	Kiabye South Grid	Red Hardpan
KP0609	604120	6795450	Kiabye South Grid	Red Hardpan
KP0610	604170	6795450	Kiabye South Grid	Red Hardpan
KP0611	604220	6795450	Kiabye South Grid	On chert
KP0612	604270	6795450	Kiabye South Grid	Red Hardpan
KP0613	604320	6795450	Kiabye South Grid	Red Hardpan
KP0614	604370	6795450	Kiabye South Grid	Red Hardpan
KP0615	604420	6795450	Kiabye South Grid	Red Hardpan

For personal use only

Sample ID	Easting	Northing	Area	Comment
KP0616	604470	6795450	Kiabye South Grid	Red Hardpan
KP0617	604520	6795450	Kiabye South Grid	Red Hardpan
KP0618	603920	6795400	Kiabye South Grid	Red Hardpan
KP0619	603970	6795400	Kiabye South Grid	Red Hardpan
KP0620	604020	6795400	Kiabye South Grid	Red Hardpan
KP0621	604070	6795400	Kiabye South Grid	Red Hardpan
KP0622	604120	6795400	Kiabye South Grid	Red Hardpan
KP0623	604170	6795400	Kiabye South Grid	Red Hardpan
KP0624	604220	6795400	Kiabye South Grid	Red Hardpan
KP0625	604270	6795400	Kiabye South Grid	Red Hardpan
KP0626	604320	6795400	Kiabye South Grid	Red Hardpan
KP0627	604370	6795400	Kiabye South Grid	Red Hardpan
KP0628	604420	6795400	Kiabye South Grid	On black slate
KP0629	604470	6795400	Kiabye South Grid	Red Hardpan
KP0630	604520	6795400	Kiabye South Grid	Red Hardpan
KP0632	603920	6795350	Kiabye South Grid	Red Hardpan
KP0633	603970	6795350	Kiabye South Grid	On granite outcrop
KP0634	604020	6795350	Kiabye South Grid	Red Hardpan
KP0635	604070	6795350	Kiabye South Grid	Red Hardpan
KP0636	604120	6795350	Kiabye South Grid	Red Hardpan
KP0637	604170	6795350	Kiabye South Grid	Red Hardpan
KP0638	604220	6795350	Kiabye South Grid	Next to costean
KP0639	604270	6795350	Kiabye South Grid	Red Hardpan
KP0640	604320	6795350	Kiabye South Grid	Red Hardpan
KP0641	604370	6795350	Kiabye South Grid	On black slate
KP0642	604420	6795350	Kiabye South Grid	Red Hardpan
KP0643	604470	6795350	Kiabye South Grid	Red Hardpan
KP0644	604520	6795350	Kiabye South Grid	Red Hardpan
KP0645	603920	6795300	Kiabye South Grid	In creek
KP0646	603970	6795300	Kiabye South Grid	On granite outcrop
KP0647	604020	6795300	Kiabye South Grid	On granite outcrop
KP0648	604070	6795300	Kiabye South Grid	Red Hardpan
KP0649	604120	6795300	Kiabye South Grid	Red Hardpan
KP0650	604170	6795300	Kiabye South Grid	Red Hardpan
KP0651	604220	6795300	Kiabye South Grid	Red Hardpan
KP0652	604270	6795300	Kiabye South Grid	Red Hardpan
KP0653	604320	6795300	Kiabye South Grid	Red Hardpan
KP0654	604370	6795300	Kiabye South Grid	Red Hardpan
KP0655	604420	6795300	Kiabye South Grid	Red Hardpan
KP0656	604470	6795300	Kiabye South Grid	Red Hardpan
KP0657	604520	6795300	Kiabye South Grid	Red Hardpan
KP0658	603920	6795250	Kiabye South Grid	On granite outcrop
KP0659	603970	6795250	Kiabye South Grid	On granite outcrop
KP0660	604020	6795250	Kiabye South Grid	Red Hardpan
KP0661	604070	6795250	Kiabye South Grid	Red Hardpan
KP0662	604120	6795250	Kiabye South Grid	Red hardpan with black slate
KP0663	604170	6795250	Kiabye South Grid	Red Hardpan
KP0664	604220	6795250	Kiabye South Grid	Chert
KP0665	604270	6795250	Kiabye South Grid	Red Hardpan
KP0666	604320	6795250	Kiabye South Grid	Red Hardpan
KP0667	604370	6795250	Kiabye South Grid	Red Hardpan
KP0668	604420	6795250	Kiabye South Grid	Red Hardpan
KP0669	604470	6795250	Kiabye South Grid	In crab holes
KP0670	604520	6795250	Kiabye South Grid	Red Hardpan
KP0671	603920	6795200	Kiabye South Grid	On granite outcrop
KP0672	603970	6795200	Kiabye South Grid	On granite outcrop
KP0673	604020	6795200	Kiabye South Grid	Light brown hardpan
KP0674	604070	6795200	Kiabye South Grid	Red Hardpan
KP0675	604120	6795200	Kiabye South Grid	Red Hardpan
KP0676	604170	6795200	Kiabye South Grid	Red Hardpan
KP0677	604220	6795200	Kiabye South Grid	Red Hardpan
KP0678	604270	6795200	Kiabye South Grid	Red Hardpan
KP0679	604320	6795200	Kiabye South Grid	Red Hardpan
KP0680	604370	6795200	Kiabye South Grid	Red Hardpan
KP0681	604420	6795200	Kiabye South Grid	Red Hardpan
KP0682	604470	6795200	Kiabye South Grid	In crab holes
KP0683	604520	6795200	Kiabye South Grid	Red Hardpan
KP0684	603920	6795150	Kiabye South Grid	Red Hardpan
KP0685	603920	6795150	Kiabye South Grid	DUPLICATE OF 684
KP0686	603970	6795150	Kiabye South Grid	On granite outcrop
KP0687	604020	6795150	Kiabye South Grid	On granite outcrop
KP0688	604070	6795150	Kiabye South Grid	Red Hardpan
KP0689	604120	6795150	Kiabye South Grid	Red Hardpan
KP0690	604170	6795150	Kiabye South Grid	Red Hardpan
KP0691	604220	6795150	Kiabye South Grid	Red Hardpan
KP0692	604270	6795150	Kiabye South Grid	Red Hardpan
KP0693	604320	6795150	Kiabye South Grid	Light brown hardpan with black slate
KP0694	604370	6795150	Kiabye South Grid	Red Hardpan
KP0695	604420	6795150	Kiabye South Grid	Red Hardpan
KP0696	604470	6795150	Kiabye South Grid	In crab holes
KP0697	604520	6795150	Kiabye South Grid	Red Hardpan
KP0698	603920	6795100	Kiabye South Grid	On granite outcrop
KP0699	603970	6795100	Kiabye South Grid	Red Hardpan
KP0700	604020	6795100	Kiabye South Grid	Red Hardpan
KP0701	604070	6795100	Kiabye South Grid	Red Hardpan
KP0702	604120	6795100	Kiabye South Grid	Red Hardpan
KP0703	604170	6795100	Kiabye South Grid	Red Hardpan
KP0704	604220	6795100	Kiabye South Grid	Red Hardpan
KP0705	604270	6795100	Kiabye South Grid	In crab holes
KP0706	604320	6795100	Kiabye South Grid	In crab holes
KP0707	604370	6795100	Kiabye South Grid	Red Hardpan
KP0708	604420	6795100	Kiabye South Grid	Red Hardpan
KP0709	604470	6795100	Kiabye South Grid	Red Hardpan
KP0710	604520	6795100	Kiabye South Grid	Red Hardpan
KP0711	603920	6795050	Kiabye South Grid	Red Hardpan
KP0712	603970	6795050	Kiabye South Grid	Red Hardpan
KP0713	604020	6795050	Kiabye South Grid	Red Hardpan
KP0714	604070	6795050	Kiabye South Grid	Red Hardpan
KP0715	604120	6795050	Kiabye South Grid	Red Hardpan
KP0716	604170	6795050	Kiabye South Grid	Red Hardpan

For personal use only

Sample ID	Easting	Northing	Area	Comment
KP0717	604220	6795050	Kiabye South Grid	Red Hardpan
KP0718	604270	6795050	Kiabye South Grid	Red Hardpan
KP0719	604320	6795050	Kiabye South Grid	Red Hardpan
KP0720	604370	6795050	Kiabye South Grid	Red Hardpan
KP0721	604420	6795050	Kiabye South Grid	Red Hardpan
KP0722	604470	6795050	Kiabye South Grid	Red Hardpan
KP0723	604520	6795050	Kiabye South Grid	Red Hardpan
KP0724	603920	6795000	Kiabye South Grid	Red Hardpan
KP0725	603970	6795000	Kiabye South Grid	Red Hardpan
KP0726	604020	6795000	Kiabye South Grid	Red Hardpan
KP0727	604070	6795000	Kiabye South Grid	Red Hardpan
KP0728	604120	6795000	Kiabye South Grid	Red Hardpan
KP0729	604170	6795000	Kiabye South Grid	Red Hardpan
KP0731	604220	6795000	Kiabye South Grid	Red Hardpan
KP0732	604270	6795000	Kiabye South Grid	Red Hardpan
KP0733	604320	6795000	Kiabye South Grid	Red Hardpan
KP0734	604370	6795000	Kiabye South Grid	Red Hardpan
KP0735	604420	6795000	Kiabye South Grid	In crab holes
KP0736	604470	6795000	Kiabye South Grid	Red Hardpan
KP0737	604520	6795000	Kiabye South Grid	Red Hardpan
KP0738	603920	6794950	Kiabye South Grid	Red Hardpan
KP0739	603970	6794950	Kiabye South Grid	Red Hardpan
KP0740	604020	6794950	Kiabye South Grid	Red Hardpan
KP0741	604070	6794950	Kiabye South Grid	Red Hardpan
KP0742	604120	6794950	Kiabye South Grid	Red Hardpan
KP0743	604170	6794950	Kiabye South Grid	On granite outcrop
KP0744	604220	6794950	Kiabye South Grid	Red Hardpan
KP0745	604270	6794950	Kiabye South Grid	Red Hardpan
KP0746	604320	6794950	Kiabye South Grid	Red Hardpan
KP0747	604370	6794950	Kiabye South Grid	Red Hardpan
KP0748	604420	6794950	Kiabye South Grid	Red Hardpan
KP0749	604470	6794950	Kiabye South Grid	Red Hardpan
KP0750	604520	6794950	Kiabye South Grid	Red Hardpan
KP0751	603920	6794900	Kiabye South Grid	Red Hardpan
KP0752	603970	6794900	Kiabye South Grid	Red Hardpan
KP0753	604020	6794900	Kiabye South Grid	Red Hardpan
KP0754	604070	6794900	Kiabye South Grid	Red Hardpan
KP0755	604120	6794900	Kiabye South Grid	Red Hardpan
KP0756	604170	6794900	Kiabye South Grid	Red Hardpan
KP0757	604220	6794900	Kiabye South Grid	Red Hardpan
KP0758	604270	6794900	Kiabye South Grid	Red Hardpan
KP0759	604320	6794900	Kiabye South Grid	Red Hardpan
KP0760	604370	6794900	Kiabye South Grid	Red Hardpan
KP0761	604420	6794900	Kiabye South Grid	Red Hardpan
KP0762	604470	6794900	Kiabye South Grid	Red Hardpan
KP0763	604520	6794900	Kiabye South Grid	Red Hardpan
KP0764	604365	6793797	5830-01	Black gravel hilltop
KP0765	604365	6793747	5830-02	Black gravel hilltop
KP0766	604365	6793847	5830-03	Black gravel hilltop
KP0767	604315	6793797	5830-04	Black gravel hilltop
KP0768	604415	6793797	5830-05	Black gravel hilltop
KP0769	604830	6793348	5860-01	Red Hardpan
KP0770	604830	6793398	5860-02	Red Hardpan
KP0771	604830	6793298	5860-03	Red Hardpan
KP0772	604780	6793348	5860-04	Red Hardpan
KP0773	604880	6793348	5860-05	Red Hardpan
KP0774	604759	6793196	5870-01	Red Hardpan
KP0775	604759	6793146	5870-02	Red Hardpan
KP0776	604759	6793246	5870-03	Red Hardpan
KP0777	604709	6793196	5870-04	Red Hardpan
KP0778	604809	6793196	5870-05	Red Hardpan
KP0780	604805	6793052	5880-01	Red hardpan with red gravel
KP0781	604805	6793002	5880-02	Red Hardpan
KP0782	604805	6793102	5880-03	Red Hardpan
KP0783	604855	6793052	5880-04	Red Hardpan
KP0784	604755	6793052	5880-05	Red Hardpan
KP0785	604396	6792152	5940-01	Red Hardpan
KP0786	604396	6792102	5940-02	Red Hardpan
KP0787	604396	6792202	5940-03	Red Hardpan
KP0788	604346	6792152	5940-04	Red Hardpan
KP0789	604446	6792152	5940-05	Red Hardpan
KP0790	604382	6791997	5950-01	Yellow-brown breakaway material with black gravel
KP0791	604382	6791947	5950-02	Yellow-brown breakaway material with black gravel
KP0792	604382	6792047	5950-03	Yellow-brown breakaway material with black gravel
KP0793	604332	6791997	5950-04	Yellow-brown breakaway material with black gravel
KP0794	604432	6791997	5950-05	Yellow-brown breakaway material with black gravel
KP0795	604346	6791849	5960-01	Black gravel with red hardpan
KP0796	604346	6791799	5960-02	Black gravel with red hardpan
KP0797	604346	6791899	5960-03	Black gravel with red hardpan
KP0798	604296	6791849	5960-04	Black gravel with red hardpan
KP0799	604396	6791849	5960-05	Black gravel with red hardpan
KP0800	604496	6791698	5970-01	Red Hardpan
KP0801	604496	6791648	5970-02	Red Hardpan
KP0802	604496	6791748	5970-03	Red Hardpan
KP0803	604446	6791698	5970-04	Red Hardpan
KP0804	604546	6791698	5970-05	Red Hardpan
KP0805	604534	6791543	5980-01	Red Hardpan
KP0806	604534	6791593	5980-02	Red Hardpan
KP0807	604584	6791543	5980-03	Red Hardpan
KP0808	604484	6791543	5980-04	Red Hardpan
KP0809	609705	6796135	Gossan alluvial gold	Red Hardpan
KP0810	609755	6796135	Gossan alluvial gold	Red Hardpan
KP0811	609805	6796135	Gossan alluvial gold	Red Hardpan
KP0812	609705	6796085	Gossan alluvial gold	Red Hardpan
KP0813	609755	6796085	Gossan alluvial gold	Red Hardpan
KP0814	609805	6796085	Gossan alluvial gold	Red Hardpan
KP0815	609705	6796035	Gossan alluvial gold	Red Hardpan
KP0816	609755	6796035	Gossan alluvial gold	Red Hardpan
KP0817	609805	6796035	Gossan alluvial gold	Red Hardpan
KP0818	609705	6795985	Gossan alluvial gold	Red Hardpan

For personal use only

Sample ID	Easting	Northing	Area	Comment
KP0819	609755	6795985	Gossan alluvial gold	Red Hardpan
KP0820	609805	6795985	Gossan alluvial gold	Red Hardpan
KP0821	609705	6795935	Gossan alluvial gold	Red Hardpan
KP0822	609755	6795935	Gossan alluvial gold	Red Hardpan
KP0823	609805	6795935	Gossan alluvial gold	Red Hardpan
KP0824	610500	6795950	Prospectors Patch	Red Hardpan
KP0825	610550	6795950	Prospectors Patch	Red Hardpan
KP0826	610600	6795950	Prospectors Patch	Red Hardpan
KP0827	610650	6795950	Prospectors Patch	Red Hardpan
KP0828	610700	6795950	Prospectors Patch	Red Hardpan
KP0829	610750	6795950	Prospectors Patch	Red Hardpan
KP0830	610800	6795950	Prospectors Patch	Red Hardpan
KP0832	610500	6795900	Prospectors Patch	Red Hardpan
KP0833	610550	6795900	Prospectors Patch	Red Hardpan
KP0834	610600	6795900	Prospectors Patch	Disturbed ground (prospectors pushing's)
KP0835	610650	6795900	Prospectors Patch	Disturbed ground (prospectors pushing's)
KP0836	610700	6795900	Prospectors Patch	Red Hardpan
KP0837	610750	6795900	Prospectors Patch	Red Hardpan
KP0838	610800	6795900	Prospectors Patch	Red Hardpan
KP0839	610500	6795850	Prospectors Patch	Red Hardpan
KP0840	610550	6795850	Prospectors Patch	Red Hardpan
KP0841	610600	6795850	Prospectors Patch	Red Hardpan
KP0842	610650	6795850	Prospectors Patch	Disturbed ground (prospectors pushing's)
KP0843	610700	6795850	Prospectors Patch	Red Hardpan
KP0844	610750	6795850	Prospectors Patch	Red Hardpan
KP0845	610800	6795850	Prospectors Patch	Red Hardpan
KP0846	610500	6795800	Prospectors Patch	Red Hardpan
KP0847	610550	6795800	Prospectors Patch	Red Hardpan
KP0848	610600	6795800	Prospectors Patch	Red Hardpan
KP0849	610650	6795800	Prospectors Patch	Red Hardpan
KP0850	610700	6795800	Prospectors Patch	Red Hardpan
KP0851	610750	6795800	Prospectors Patch	Red Hardpan
KP0852	610800	6795800	Prospectors Patch	Red Hardpan
KP0853	610500	6795750	Prospectors Patch	Red Hardpan
KP0854	610550	6795750	Prospectors Patch	Red Hardpan
KP0855	610600	6795750	Prospectors Patch	Red Hardpan
KP0856	610650	6795750	Prospectors Patch	Red Hardpan
KP0857	610700	6795750	Prospectors Patch	Red Hardpan
KP0858	610750	6795750	Prospectors Patch	Red Hardpan
KP0859	610800	6795750	Prospectors Patch	Red Hardpan
KP0860	610500	6795700	Prospectors Patch	Red Hardpan
KP0861	610550	6795700	Prospectors Patch	Red Hardpan
KP0862	610600	6795700	Prospectors Patch	Red Hardpan
KP0863	610650	6795700	Prospectors Patch	Red Hardpan
KP0864	610700	6795700	Prospectors Patch	Red Hardpan
KP0865	610750	6795700	Prospectors Patch	Red Hardpan
KP0866	610800	6795700	Prospectors Patch	Red Hardpan
KP0867	610500	6795650	Prospectors Patch	Red Hardpan
KP0868	610550	6795650	Prospectors Patch	Red Hardpan
KP0869	610600	6795650	Prospectors Patch	Red Hardpan
KP0870	610650	6795650	Prospectors Patch	Red Hardpan
KP0871	610700	6795650	Prospectors Patch	Red Hardpan
KP0872	610750	6795650	Prospectors Patch	Red Hardpan
KP0873	610800	6795650	Prospectors Patch	Red Hardpan
KP0874	610500	6795600	Prospectors Patch	Red Hardpan
KP0875	610550	6795600	Prospectors Patch	Red Hardpan
KP0876	610600	6795600	Prospectors Patch	Red Hardpan
KP0877	610650	6795600	Prospectors Patch	Red Hardpan
KP0878	610700	6795600	Prospectors Patch	Red Hardpan
KP0879	610750	6795600	Prospectors Patch	Red Hardpan
KP0880	610800	6795600	Prospectors Patch	Red Hardpan

For personal use only

## JORC Code, 2012 Edition - Table 1

### 1.1 Section 1 Sampling Techniques and Data

Criteria	JORC Code explanation	Commentary
Sampling techniques	<ul style="list-style-type: none"> <li>Nature and quality of sampling (e.g. cut channels, random chips, or specific specialised industry standard measurement tools appropriate to the minerals under investigation, such as down hole gamma sondes, or handheld XRF instruments, etc). These examples should not be taken as limiting the broad meaning of sampling.</li> <li>Include reference to measures taken to ensure sample representivity and the appropriate calibration of any measurement tools or systems used.</li> <li>Aspects of the determination of mineralisation that are Material to the Public Report.</li> <li>In cases where 'industry standard' work has been done this would be relatively simple (eg 'reverse circulation drilling was used to obtain 1 m samples from which 3 kg was pulverised to produce a 30 g charge for fire assay'). In other cases more explanation may be required, such as where there is coarse gold that has inherent sampling problems. Unusual commodities or mineralisation types (eg submarine nodules) may warrant disclosure of detailed information.</li> </ul>	<ul style="list-style-type: none"> <li>Soil sampling was taken along infill traverses and grids at 50m spacings with dry regolith taken from 20-25cm depth and screened to -0.4mm (400µm) collecting 250-300g of useful fraction.</li> <li>Rock samples were collected from outcrop with 1-2kg samples collected at sites deemed to be intrusive (quartz vein) or considered potential hosts to mineralisation (sheared and/or altered basement).</li> </ul>
Drilling techniques	<ul style="list-style-type: none"> <li>Drill type (e.g. core, reverse circulation, open-hole hammer, rotary air blast, auger, Bangka, sonic, etc) and details (e.g. core diameter, triple or standard tube, depth of diamond tails, face-sampling bit or other type, whether core is oriented and if so, by what method, etc).</li> </ul>	<ul style="list-style-type: none"> <li>No drilling reported</li> </ul>
Drill sample recovery	<ul style="list-style-type: none"> <li>Method of recording and assessing core and chip sample recoveries and results assessed.</li> <li>Measures taken to maximise sample recovery and ensure representative nature of the samples.</li> <li>Whether a relationship exists between sample recovery and grade and whether sample bias may have occurred due to preferential loss/gain of fine/coarse material.</li> </ul>	<ul style="list-style-type: none"> <li>No drilling reported.</li> </ul>
Logging	<ul style="list-style-type: none"> <li>Whether core and chip samples have been geologically and geotechnically logged to a level of detail to support appropriate Mineral Resource estimation, mining studies and metallurgical studies.</li> <li>Whether logging is qualitative or</li> </ul>	<ul style="list-style-type: none"> <li>No drilling reported.</li> <li>Rock and soil sampling is not used for resource estimation.</li> </ul>

Criteria	JORC Code explanation	Commentary
	<p><i>quantitative in nature. Core (or costean, channel, etc) photography.</i></p> <ul style="list-style-type: none"> <li>The total length and percentage of the relevant intersections logged.</li> </ul>	
Sub-sampling techniques and sample preparation	<ul style="list-style-type: none"> <li>If core, whether cut or sawn and whether quarter, half or all core taken.</li> <li>If non-core, whether riffled, tube sampled, rotary split, etc and whether sampled wet or dry.</li> <li>For all sample types, the nature, quality and appropriateness of the sample preparation technique.</li> <li>Quality control procedures adopted for all sub-sampling stages to maximise representivity of samples.</li> <li>Measures taken to ensure that the sampling is representative of the in situ material collected, including for instance results for field duplicate/second-half sampling.</li> <li>Whether sample sizes are appropriate to the grain size of the material being sampled.</li> </ul>	<ul style="list-style-type: none"> <li>Soil sampling was collected from predetermine points based on special separation. Rock chip sampling was biased towards outcrop that was altered (mechanical or chemical) or intrusive in nature.</li> <li>Soils were screened to -400µm while rock samples were taken raw, both considered appropriate for the medium sampled.</li> <li>QAQC included cleaning screens and sampling equipment between sites, new paper geochems and plastic protection sleeves or new high density woven calico bags.</li> <li>Duplicate, blank and standards (CRM) were done at approximately 50/100 sample intervals offset.</li> </ul>
Quality of assay data and laboratory tests	<ul style="list-style-type: none"> <li>The nature, quality and appropriateness of the assaying and laboratory procedures used and whether the technique is considered partial or total.</li> <li>For geophysical tools, spectrometers, handheld XRF instruments, etc, the parameters used in determining the analysis including instrument make and model, reading times, calibrations factors applied and their derivation, etc.</li> <li>Nature of quality control procedures adopted (e.g. standards, blanks, duplicates, external laboratory checks) and whether acceptable levels of accuracy (i.e. lack of bias) and precision have been established.</li> </ul>	<ul style="list-style-type: none"> <li>Soil samples will be crushed, dried and pulverized with a 25g spilt taken fire assay.</li> <li>Rocks to be crushed, dried, pulverized with splits taken to fire assay and 4 acid total digest. Charges are analysed by either ICP-MS or ICP-OES.</li> <li>Fire Assay is considered an appropriate method for gold.</li> <li>Duplicate, blank and standards (CRM) were done at approximately 50/100 sample intervals offset.</li> </ul>
Verification of sampling and assaying	<ul style="list-style-type: none"> <li>The verification of significant intersections by either independent or alternative company personnel.</li> <li>The use of twinned holes.</li> <li>Documentation of primary data, data entry procedures, data verification, data storage (physical and electronic) protocols.</li> <li>Discuss any adjustment to assay data.</li> </ul>	<ul style="list-style-type: none"> <li>Assay results are yet to be received.</li> <li>Sample check lists were compiled during the collection phase, checked before laboratory lodgement and checked again by the laboratory.</li> <li>Sample details are done in the field electronically with a tablet recording location, site description and other details by drop down menus. Dada is transferred to database for quality inspection.</li> </ul>
Location of data points	<ul style="list-style-type: none"> <li>Accuracy and quality of surveys used to locate drill holes (collar and down-hole</li> </ul>	<ul style="list-style-type: none"> <li>Tablet and Garmin GPS66st used in the field with site locations recorded in GDA94 (z50).</li> </ul>



Criteria	JORC Code explanation	Commentary
	<p>surveys), trenches, mine workings and other locations used in Mineral Resource estimation.</p> <ul style="list-style-type: none"> <li>• Specification of the grid system used.</li> <li>• Quality and adequacy of topographic control.</li> </ul>	<ul style="list-style-type: none"> <li>• DEM Topographic control was used with +/-1m accuracy.</li> <li>• No mineral resource estimation was conducted.</li> </ul>
Data spacing and distribution	<ul style="list-style-type: none"> <li>• Data spacing for reporting of Exploration Results.</li> <li>• Whether the data spacing and distribution is sufficient to establish the degree of geological and grade continuity appropriate for the Mineral Resource and Ore Reserve estimation procedure(s) and classifications applied.</li> <li>• Whether sample compositing has been applied.</li> </ul>	<ul style="list-style-type: none"> <li>• Sample spacing (50m) is considered appropriate for initial first pass sampling and is consistent with the historical sample spacing where infill was conducted.</li> <li>• Being exploration results no work was considered sufficient for any ore determinations.</li> <li>• No results have been received.</li> <li>• No analytical compositing has been applied.</li> </ul>
Orientation of data in relation to geological structure	<ul style="list-style-type: none"> <li>• Whether the orientation of sampling achieves unbiased sampling of possible structures and the extent to which this is known, considering the deposit type.</li> <li>• If the relationship between the drilling orientation and the orientation of key mineralised structures is considered to have introduced a sampling bias, this should be assessed and reported if material.</li> </ul>	<ul style="list-style-type: none"> <li>• Sampling was done on East -West lines and considering the N-S strike of most of the geology the orientation is considered appropriate.</li> <li>• No drilling conducted.</li> </ul>
Sample security	<ul style="list-style-type: none"> <li>• The measures taken to ensure sample security.</li> </ul>	<ul style="list-style-type: none"> <li>• Samples were collected by RMX field hands with the collected samples monitored in the field and taken directly to the laboratory at the end of the programme with no third-party intervention.</li> </ul>
Audits or reviews	<ul style="list-style-type: none"> <li>• The results of any audits or reviews of sampling techniques and data.</li> </ul>	<ul style="list-style-type: none"> <li>• No audit or reviews of sampling techniques and data has been undertaken other than the collection of these initial samples.</li> </ul>

## 1.2 Section 2 Reporting of Exploration Results

(Criteria listed in the preceding section also apply to this section.)

Criteria	JORC Code explanation	Commentary
Mineral tenement and land tenure status	<ul style="list-style-type: none"> <li>• Type, reference name/number, location and ownership including agreements or material issues with third parties such as joint ventures, partnerships, overriding royalties, native title interests, historical sites, wilderness or national park and environmental settings.</li> <li>• The security of the tenure held at the time of reporting along with any known impediments to obtaining a licence to operate in the area.</li> </ul>	<ul style="list-style-type: none"> <li>• The four Exploration licences E59/2814 and E592891-93 are granted and held in the name of Kingston Nominees Pty Ltd. Kingston have agreed to sell the licences to Red Mountain Mining under the terms of the agreement.</li> <li>• There are no Native Title interests associated with the tenements and there are no environmentally sensitive areas within the licences.</li> </ul>

Criteria	JORC Code explanation	Commentary
<i>Exploration done by other parties</i>	<ul style="list-style-type: none"> <li><i>Acknowledgment and appraisal of exploration by other parties.</i></li> </ul>	<ul style="list-style-type: none"> <li>Four main reported historical explorers over tenement</li> <li>Browns Creek Gold 1988-1989</li> <li>Marymia Exploration 1999</li> <li>Maximus Resources 2005-2014</li> <li>Gunex Pty Ltd (Aldoro Resources Ltd 2017-2023/24).</li> </ul>
<i>Geology</i>	<ul style="list-style-type: none"> <li><i>Deposit type, geological setting and style of mineralisation.</i></li> </ul>	<ul style="list-style-type: none"> <li>The Kiabye Greenstone Belt is the dominant package underlying the tenement and fringes the Narndee Igneous Complex which lies to the east. The KGB consists of metamorphosed mafic and felsic rocks, ultramafic and metasedimentary rocks and bound to the west by the granitic terrane.</li> <li>The belt is metamorphosed with the greenstone geology generally striking north-south.</li> </ul>
<i>Drill hole Information</i>	<ul style="list-style-type: none"> <li><i>A summary of all information material to the understanding of the exploration results including a tabulation of the following information for all Material drill holes:</i> <ul style="list-style-type: none"> <li><i>easting and northing of the drill hole collar</i></li> <li><i>elevation or RL (Reduced Level – elevation above sea level in metres) of the drill hole collar</i></li> <li><i>dip and azimuth of the hole</i></li> <li><i>down hole length and interception depth</i></li> <li><i>hole length.</i></li> </ul> </li> <li><i>If the exclusion of this information is justified on the basis that the information is not Material and this exclusion does not detract from the understanding of the report, the Competent Person should clearly explain why this is the case.</i></li> </ul>	<ul style="list-style-type: none"> <li>No drilling conducted</li> </ul>
<i>Data aggregation methods</i>	<ul style="list-style-type: none"> <li><i>In reporting Exploration Results, weighting averaging techniques, maximum and/or minimum grade truncations (e.g. cutting of high grades) and cut-off grades are usually Material and should be stated.</i></li> <li><i>Where aggregate intercepts incorporate short lengths of high grade results and longer lengths of low grade results, the procedure used for such aggregation should be stated and some typical examples of such aggregations should be shown in detail.</i></li> <li><i>The assumptions used for any reporting of metal equivalent values should be clearly</i></li> </ul>	<ul style="list-style-type: none"> <li>No aggregated methods are reported</li> </ul>

Criteria	JORC Code explanation	Commentary
	<i>stated.</i>	
<i>Relationship between mineralisation widths and intercept lengths</i>	<ul style="list-style-type: none"> <li>• <i>These relationships are particularly important in the reporting of Exploration Results.</i></li> <li>• <i>If the geometry of the mineralisation with respect to the drill hole angle is known, its nature should be reported.</i></li> <li>• <i>If it is not known and only the down hole lengths are reported, there should be a clear statement to this effect (e.g. 'down hole length, true width not known').</i></li> </ul>	<ul style="list-style-type: none"> <li>• No relationship is made between mineralisation width and intercept lengths</li> </ul>
<i>Diagrams</i>	<ul style="list-style-type: none"> <li>• <i>Appropriate maps and sections (with scales) and tabulations of intercepts should be included for any significant discovery being reported These should include, but not be limited to a plan view of drill hole collar locations and appropriate sectional views.</i></li> </ul>	<ul style="list-style-type: none"> <li>• Appropriate location diagram is presented in the text. The diagram is indicative only as no assumptions of grade, extent or depth are made.</li> </ul>
<i>Balanced reporting</i>	<ul style="list-style-type: none"> <li>• <i>Where comprehensive reporting of all Exploration Results is not practicable, representative reporting of both low and high grades and/or widths should be practiced to avoid misleading reporting of Exploration Results.</i></li> </ul>	<ul style="list-style-type: none"> <li>• Only pertinent results are given as due to the relevance of the announcement.</li> </ul>
<i>Other substantive exploration data</i>	<ul style="list-style-type: none"> <li>• <i>Other exploration data, if meaningful and material, should be reported including (but not limited to): geological observations; geophysical survey results; geochemical survey results; bulk samples – size and method of treatment; metallurgical test results; bulk density, groundwater, geotechnical and rock characteristics; potential deleterious or contaminating substances.</i></li> </ul>	<ul style="list-style-type: none"> <li>• There is no other substantive exploration data provided or withheld as this announcement deals with this early phase exploration target. Other geophysical data sets are mentioned by as yet have not been interpreted for targeting.</li> </ul>
<i>Further work</i>	<ul style="list-style-type: none"> <li>• <i>The nature and scale of planned further work (e.g. tests for lateral extensions or depth extensions or large-scale step-out drilling).</i></li> <li>• <i>Diagrams clearly highlighting the areas of possible extensions, including the main geological interpretations and future drilling areas, provided this information is not commercially sensitive.</i></li> </ul>	<ul style="list-style-type: none"> <li>• Depending on the results further sampling may be required with grids extended or infilled to tighter spacings.</li> <li>• Drilling to follow-up any gold targets from the soil sampling and drilling the historical gold targets and any results driven rock sample targets</li> </ul>