

11 September 2024

## Bonanza Grade Coarse Gold Zones At Western Flanks

Perth, Western Australia, 11 September 2024: Westgold Resources Limited (ASX: WGX, TSX: WGX, OTCQX: WGXRF) (Westgold or the Company) is pleased to provide an update in relation to recent mining activities at the Western Flanks orebody at Beta Hunt.

### Highlights

**Sediment hosted coarse gold mineralisation confirmed within Western Flanks - providing significant production upside potential.**

**Mineralisation style is consistent with the bonanza grade “Father’s Day Vein” - previously mined in the parallel A Zone deposit.**

**Potential for similar style high grade positions within Beta Hunt - including in the rapidly evolving Fletcher Zone.**



Figure 1 - Coarse gold in Western Flanks ore

### Westgold Managing Director and CEO Wayne Bramwell commented:

“Coarse gold occurrences at Beta Hunt, such as the famous “Father’s Day Vein” discovered in 2018, have to date been limited to the A Zone deposit.

The confirmation of this style of mineralisation within the Western Flanks deposit not only provides increased production upside, it also indicates the potential for additional bonanza grade zones within other mineralised structures such as the Fletcher Zone.

Westgold sees a much larger opportunity at Beta Hunt and across our Southern Goldfields assets, with drilling the catalyst to defining their real scale.”

For personal use only

## Sediment Hosted Coarse Gold at Beta Hunt – The A Zone Discovery

Within Westgold’s Beta Hunt mine at Kambalda, Western Australia, the majority of gold mineralisation is hosted within the Lunnon Basalt and associated with northwest trending sub-vertical structures (**Figure 2**). Within the Lunnon Basalt is a narrow pyritic laminated shale horizon known as the Lunnon Sediment. When intersected by mineralising structures, such as that in A Zone, the Lunnon Sediment has developed a bonanza grading southerly plunging coarse gold zone along the length of the A Zone.

This gold zone includes the Father’s Day Vein (**FDV**) occurrence which was discovered in 2018<sup>1</sup> and produced in excess of 30,000oz of gold<sup>2</sup>. **Importantly, the FDV had not been captured in the A Zone geological or Mineral Resource Estimation model at that time.**

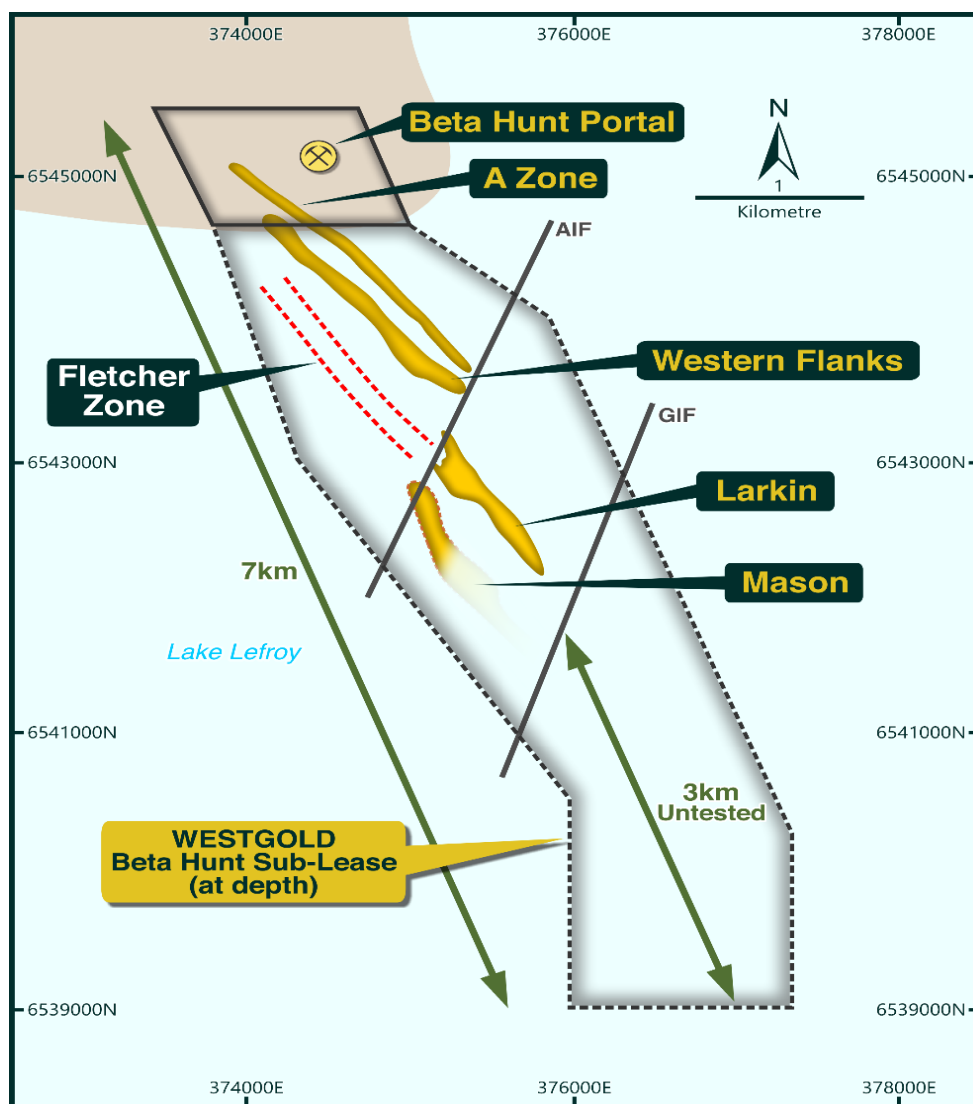


Figure 2 - Beta Hunt gold deposit locations

<sup>1</sup> Refer to Karora Resources (then RNC Minerals) TSX Announcements of 9 September 2018 & 16 September 2018.

<sup>2</sup> Refer to Karora Resources (then RNC Minerals) TSX Announcement of 2 October 2018.

## Western Flanks – An Additional Coarse Gold Opportunity

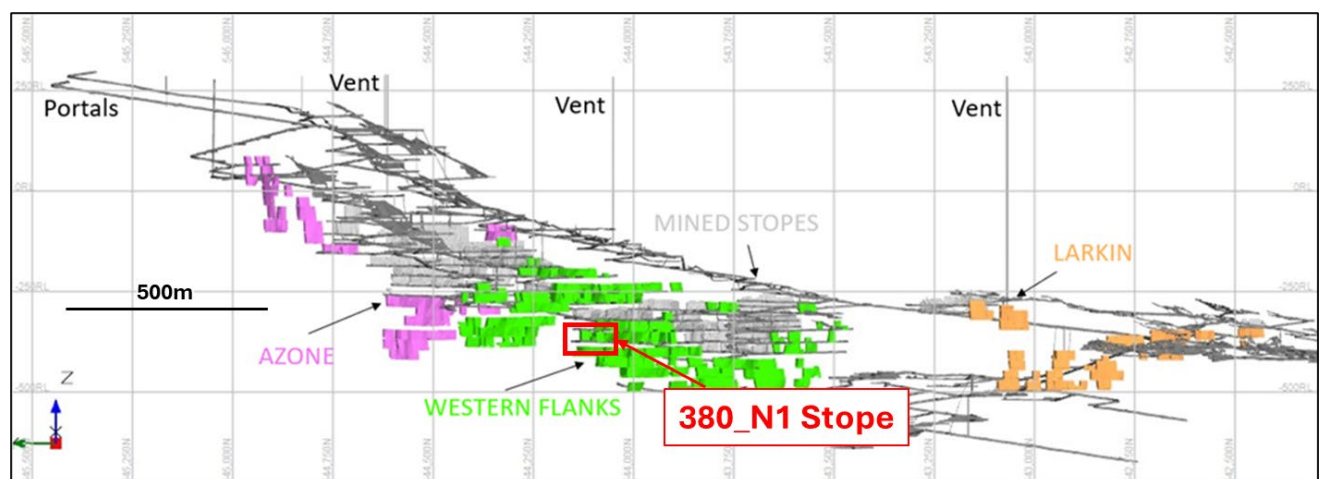
Drilling conducted by Karora Resources in 2019 as part of the Western Flanks exploration program intersected sediment associated, coarse gold in two holes with assay results comprising (Appendix A):

- **2.00m @ 1,017.3 g/t Au - including 0.27m @ 7,621 g/t Au, in drill hole WFN-29; and**
- **4.75m @ 395.9g/t Au - including 0.85m @ 2,210g/t Au, in drill hole WFN-063<sup>3</sup>.**

These results highlighted the potential for Western Flanks to also host the same style of coarse gold mineralisation as mined from the Father's Day Vein within A Zone.

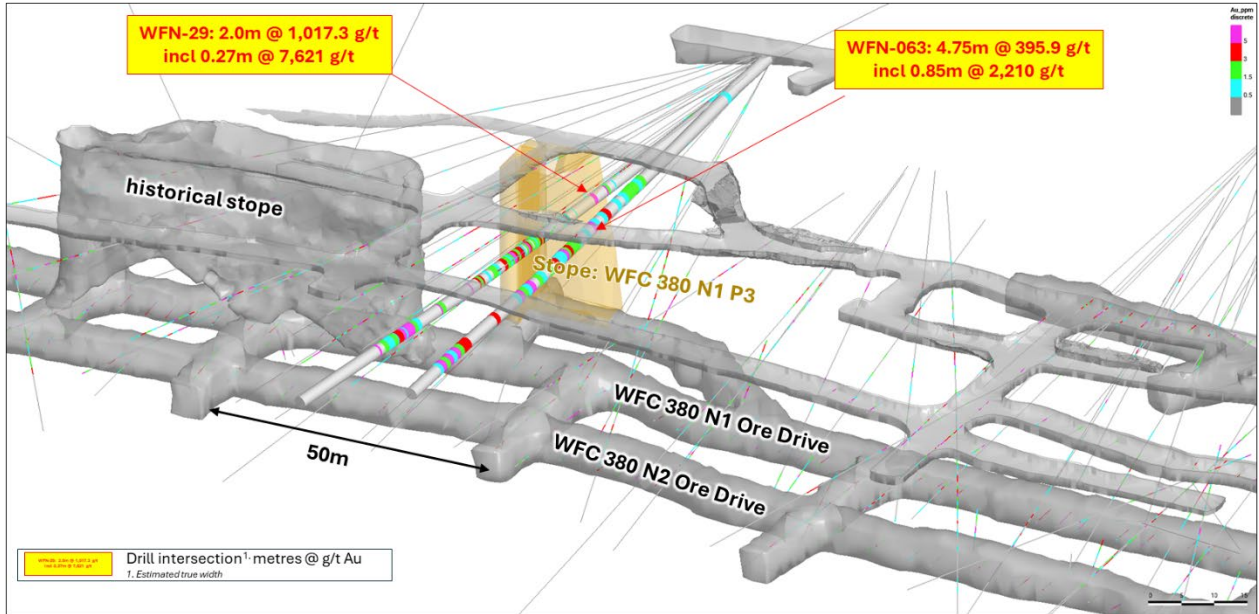
**In Q1 FY25, the mining schedule allowed for stoping of the area hosting the coarse gold intersections identified in the 2019 drilling (Figures 3 & 4).** Observations from mining Stope WFC-380-N1 have since revealed the presence of sediment associated coarse gold (Figure 1) which confirms the same coarse gold style of mineralisation mined at A Zone is also present at Western Flanks.

In a similar fashion to A Zone, the coarse gold mineralisation at Western Flanks is interpreted to have a shallow southerly plunge along the length of the Western Flanks Mineral Resource. **The coarse gold mineralisation at Western Flanks is not yet modelled in the Western Flanks Mineral Resource and is therefore expected to deliver additional ounces to the mine reconciliation.**



**Figure 3 - Beta Hunt long section looking east showing 2023 Ore Reserves highlighting the position of the WFC-380-N1 Stope hosting Lunnon Sediment associated coarse gold**

<sup>3</sup> Refer to Karora Resources TSX announcements of 22 January 2019, and 25 February 2019 (accessible via SEDAR+ ([www.sedarplus.ca](http://www.sedarplus.ca))).



**Figure 4 - Oblique view looking north of Western Flanks mine development highlighting position WFC-380-N1 Stope which contains the coarse gold. Also shown are two historical drill holes which intersected Lunnon Sediment associated coarse gold. Results from these holes were previously reported in Karora's news releases of 22 January 2019, and 25 February 2019 (accessible via SEDAR+ (www.sedarplus.ca)).**

## Looking Forward

The Lunnon Sediment is a regional stratigraphic unit which is located around 150m below the Lunnon Basalt – Kambalda Ultramafic contact. This unit is likely present over the full Beta Hunt sub-lease and the confirmation, through mining, that coarse gold is now associated with the Western Flanks shear zone supports the interpretation for coarse gold mineralisation occurring wherever the Lunnon Sediment intersects a mineralised shear zone.

**By analogy to A Zone and Western Flanks, this opens the opportunity for Lunnon Sediment coarse gold mineralisation to occur within the Fletcher Zone (within the Hunt Block) as well as extensions to shear zones in the Beta and Gamma Blocks.**

This represents significant upside production potential that will be tested by accelerated drilling programmes in FY25.

**This announcement is authorised for release to the ASX and TSX by the Board.**

#### **Investor and media relations enquiries**

Investor Relations  
Kasun Liyanaarachchi | Investor Relations Manager  
investor.relations@westgold.com.au  
+61 458 564 483

Media  
Peter Knight | Communications Manager  
peter.knight@westgold.com.au  
+61 459 980 481

Investor Relations – North America  
Rob Buchanan | CPIR  
Rob.Buchanan@westgold.com.au  
+1 416-309-0600

## **Competent/Qualified Person Statements**

### **Exploration Results**

The information in this release that relates to exploration results was compiled by Westgold technical employees and contractors under the supervision of Mr. Simon Rigby B.Sc. (Hons), who is a member of the Australian Institute of Geoscientists and who has verified, reviewed and approved such information. Mr Rigby is a full-time employee of the Company and has sufficient experience which is relevant to the styles of mineralisation and types of deposit under consideration and to the activities which he is undertaking to qualify as a Competent Person as defined in the 2012 Edition of the Australasian Code for Reporting of Exploration Results, Mineral Resources and Ore Reserves (the “**JORC Code**”) and as a Qualified Person as defined in the CIM Guidelines and National Instrument 43-101 – *Standards of Disclosure for Mineral Projects* (“**NI 43-101**”). Mr. Rigby is an employee of the Company and, accordingly, is not independent for purposes of NI 43-101. Mr Rigby consents to and approves the inclusion in this release of the matters based on his information in the form and context in which it appears. Mr Rigby is eligible to participate in short- and long-term incentive plans of the company.

### **General**

Mineral Resources, Ore Reserve Estimates and Exploration Targets and Results are calculated in accordance with the JORC Code. Investors outside Australia should note that while Ore Reserve and Mineral Resource estimates of the Company in this announcement comply with the JORC Code (such JORC Code-compliant Ore Reserves and Mineral Resources being "Ore Reserves" and "Mineral Resources" respectively), they may not comply with the relevant guidelines in other countries. The JORC Code is an acceptable foreign code under NI 43-101. Information contained in this announcement describing mineral deposits may not be comparable to similar information made public by companies subject to the reporting and disclosure requirements of US securities laws, including Item 1300 of Regulation S-K. All technical and scientific information in this release has been prepared in accordance with the Canadian regulatory requirements set out in NI 43-101 and has been reviewed on behalf of the Company by Qualified Persons, as set forth above.

The Company confirms that it is not aware of any new information or data that materially affects the information included in the original market announcements and that all material assumptions and technical parameters underpinning the estimates in the relevant market announcements continue to apply and have not been materially changed. The Company confirms that the form and context in which the Competent Persons findings are presented have not been materially modified from the original market announcements.

## Forward Looking Statements

These materials prepared by Westgold Resources Limited include forward looking statements. Often, but not always, forward looking statements can generally be identified by the use of forward looking words such as “may”, “will”, “expect”, “intend”, “believe”, “forecast”, “predict”, “plan”, “estimate”, “anticipate”, “continue”, and “guidance”, or other similar words and may include, without limitation, statements regarding plans, strategies and objectives of management, anticipated production or construction commencement dates and expected costs or production outputs.

Forward looking statements inherently involve known and unknown risks, uncertainties and other factors that may cause the Company’s actual results, performance and achievements to differ materially from any future results, performance or achievements. Relevant factors may include, but are not limited to, changes in commodity prices, foreign exchange fluctuations and general economic conditions, increased costs and demand for production inputs, the speculative nature of exploration and project development, including the risks of obtaining necessary licenses and permits and diminishing quantities or grades of reserves, political and social risks, changes to the regulatory framework within which the Company operates or may in the future operate, environmental conditions including extreme weather conditions, recruitment and retention of personnel, industrial relations issues and litigation.

Forward looking statements are based on the Company and its management’s good faith assumptions relating to the financial, market, regulatory and other relevant environments that will exist and affect the Company’s business and operations in the future. The Company does not give any assurance that the assumptions on which forward looking statements are based will prove to be correct, or that the Company’s business or operations will not be affected in any material manner by these or other factors not foreseen or foreseeable by the Company or management or beyond the Company’s control.

Although the Company attempts and has attempted to identify factors that would cause actual actions, events or results to differ materially from those disclosed in forward looking statements, there may be other factors that could cause actual results, performance, achievements or events not to be as anticipated, estimated or intended, and many events are beyond the reasonable control of the Company. In addition, the Company’s actual results could differ materially from those anticipated in these forward-looking statements as a result of the factors outlined in the “Risk Factors” section of the Company’s continuous disclosure filings available on SEDAR+ or the ASX, including, in the Company’s current annual report, half year report or most recent management discussion and analysis.

Accordingly, readers are cautioned not to place undue reliance on forward looking statements. Forward looking statements in these materials speak only at the date of issue. Subject to any continuing obligations under applicable law or any relevant stock exchange listing rules, in providing this information the Company does not undertake any obligation to publicly update or revise any of the forward-looking statements or to advise of any change in events, conditions or circumstances.

**APPENDIX A – WESTERN FLANKS – WFC N1 P3 STOPE DRILLING -  
SIGNIFICANT INTERSECTIONS WITHIN LUNNON SEDIMENT UNIT**

Hole	Collar N	Collar E	Collar RL	Intercept (Downhole)	From (m)	Dip	Azi	Total Length (m)
WFN-29	544087	374806	-348.7	2.00m @ 1,017.3g/t Au	43.00	-8.6	234	119.8
				Inc. 0.27m @ 7,621g/t Au	44.82			
WFN-63	544087	374805	-348.2	4.75m @ 365.9g/t Au	47.00	-9.0	230	117.2
				Inc. 0.85m @ 2,210g/t Au	51.00			

For personal use only

## APPENDIX B – JORC 2012 TABLE 1 – GOLD DIVISION

### SECTION 1: SAMPLING TECHNIQUES AND DATA

(Criteria in this section apply to all succeeding sections.)

Criteria	JORC Code Explanation	Commentary
<b>Sampling techniques</b>	<ul style="list-style-type: none"> <li>Nature and quality of sampling (e.g. cut channels, random chips, or specific specialised industry standard measurement tools appropriate to the minerals under investigation, such as down hole gamma sondes, or handheld XRF instruments, etc.). These examples should not be taken as limiting the broad meaning of sampling.</li> <li>Include reference to measures taken to ensure sample representivity and the appropriate calibration of any measurement tools or systems used.</li> <li>Aspects of the determination of mineralisation that are Material to the Public Report.</li> <li>In cases where 'industry standard' work has been done this would be relatively simple (e.g. 'reverse circulation drilling was used to obtain 1 m samples from which 3 kg was pulverised to produce a 30 g charge for fire assay'). In other cases more explanation may be required, such as where there is coarse gold that has inherent sampling problems. Unusual commodities or mineralisation types (e.g. submarine nodules) may warrant disclosure of detailed information.</li> </ul>	<ul style="list-style-type: none"> <li><b>Diamond Drilling</b> A significant portion of the data used in resource calculations has been gathered from diamond core. Multiple sizes have been used historically. This core is geologically logged and subsequently halved for sampling. Grade control holes may be whole-cored to streamline the core handling process if required.</li> <li><b>Face Sampling</b> At each of the major past and current underground producers, each development face / round is horizontally chip sampled. The sampling intervals are dominated by geological constraints (e.g. rock type, veining and alteration / sulphidation etc.). The majority of exposures within the orebody are sampled.</li> <li><b>Sludge Drilling</b> Sludge drilling is performed with an underground production drill rig. It is an open hole drilling method using water as the flushing medium, with a 64mm (nominal) hole diameter. Sample intervals are ostensibly the length of the drill steel. Holes are drilled at sufficient angles to allow flushing of the hole with water following each interval to prevent contamination. Sludge drilling is not used to inform resource models.</li> </ul>
<b>Drilling techniques</b>	<ul style="list-style-type: none"> <li>Drill type (e.g. core, reverse circulation, open-hole hammer, rotary air blast, auger, Bangka, sonic, etc.) and details (e.g. core diameter, triple or standard tube, depth of diamond tails, face-sampling bit or other type, whether core is oriented and if so, by what method, etc.).</li> <li>Method of recording and assessing core and chip sample recoveries and results assessed.</li> <li>Measures taken to maximise sample recovery and ensure representative nature of the samples.</li> </ul>	<ul style="list-style-type: none"> <li><b>RC Drilling</b> Drill cuttings are extracted from the RC return via cyclone. The underflow from each interval is transferred via bucket to a four-tiered riffle splitter, delivering approximately three kilograms of the recovered material into calico bags for analysis. The residual material is retained on the ground near the hole. Composite samples are obtained from the residue material for initial analysis, with the split samples remaining with the individual residual piles until required for re-split analysis or eventual disposal.</li> <li><b>RAB / Aircore Drilling</b> Combined scoops from bucket dumps from cyclone for composite. Split samples taken from individual bucket dumps via scoop. RAB holes are not included in the resource estimate.</li> <li><b>Blast Hole Drilling</b> Cuttings sampled via splitter tray per individual drill rod. Blast holes not included in the resource estimate.</li> </ul>
<b>Drill sample recovery</b>	<ul style="list-style-type: none"> <li>Whether a relationship exists between sample recovery and grade and whether sample bias may have occurred due to preferential loss/gain of fine/coarse material.</li> </ul>	<ul style="list-style-type: none"> <li>All geology input is logged and validated by the relevant area geologists, incorporated into this is assessment of sample recovery. No defined relationship exists between sample recovery and grade. Nor has sample bias due to preferential loss or gain of fine or coarse material been noted.</li> </ul>



Criteria	JORC Code Explanation	Commentary
<b>Logging</b>	<ul style="list-style-type: none"> <li>Whether core and chip samples have been geologically and geotechnically logged to a level of detail to support appropriate Mineral Resource estimation, mining studies and metallurgical studies.</li> <li>Whether logging is qualitative or quantitative in nature. Core (or costean, channel, etc.) photography.</li> <li>The total length and percentage of the relevant intersections logged</li> </ul>	<ul style="list-style-type: none"> <li>Westgold surface drill-holes are all orientated and have been logged in detail for geology, veining, alteration, mineralisation and orientated structure. Westgold underground drill-holes are logged in detail for geology, veining, alteration, mineralisation and structure. Core has been logged in enough detail to allow for the relevant mineral resource estimation techniques to be employed.</li> <li>Surface core is photographed both wet and dry and underground core is photographed wet. All photos are stored on the Company's servers, with the photographs from each hole contained within separate folders.</li> <li>Development faces are mapped geologically.</li> <li>RC, RAB and Aircore chips are geologically logged.</li> <li>Sludge drilling is logged for lithology, mineralisation and vein percentage.</li> <li>Logging is quantitative in nature.</li> <li>All holes are logged completely, all faces are mapped completely.</li> </ul>
<b>Sub-sampling techniques and sample preparation</b>	<ul style="list-style-type: none"> <li>If core, whether cut or sawn and whether quarter, half or all core taken.</li> <li>If non-core, whether riffled, tube sampled, rotary split, etc. and whether sampled wet or dry.</li> <li>For all sample types, the nature, quality and appropriateness of the sample preparation technique.</li> <li>Quality control procedures adopted for all sub-sampling stages to maximise representivity of samples.</li> <li>Measures taken to ensure that the sampling is representative of the in-situ material collected, including for instance results for field duplicate/second-half sampling.</li> <li>Whether sample sizes are appropriate to the grain size of the material being sampled.</li> </ul>	<ul style="list-style-type: none"> <li>Blast holes -Sampled via splitter tray per individual drill rods.</li> <li>RAB / AC chips - Combined scoops from bucket dumps from cyclone for composite. Split samples taken from individual bucket dumps via scoop.</li> <li>RC - Three tier riffle splitter (approximately 5kg sample). Samples generally dry.</li> <li>Face Chips - Nominally chipped horizontally across the face from left to right, sub-set via geological features as appropriate.</li> <li>Diamond Drilling - Half-core niche samples, sub-set via geological features as appropriate. Grade control holes may be whole-cored to streamline the core handling process if required.</li> <li>Chips / core chips undergo total preparation.</li> <li>Samples undergo fine pulverisation of the entire sample by an LM5 type mill to achieve a 75µ product prior to splitting.</li> <li>QA/QC is currently ensured during the sub-sampling stages process via the use of the systems of an independent NATA / ISO accredited laboratory contractor. A significant portion of the historical informing data has been processed by in-house laboratories.</li> <li>The sample size is considered appropriate for the grain size of the material being sampled.</li> <li>The un-sampled half of diamond core is retained for check sampling if required. For RC chips regular field duplicates are collected and analysed for significant variance to primary results.</li> </ul>
<b>Quality of assay data and laboratory tests</b>	<ul style="list-style-type: none"> <li>The nature, quality and appropriateness of the assaying and laboratory procedures used and whether the technique is considered partial or total.</li> <li>For geophysical tools, spectrometers, handheld XRF instruments, etc., the parameters used in determining the analysis including instrument make and model, reading times, calibrations factors applied and their derivation, etc.</li> <li>Nature of quality control procedures adopted (e.g. standards, blanks, duplicates, external laboratory checks) and whether acceptable levels of accuracy (i.e. lack of bias) and precision have been established.</li> </ul>	<ul style="list-style-type: none"> <li>Recent drilling was analysed by fire assay as outlined below;</li> <li>At Beta Hunt all drill core sampling is conducted by Karora personnel. Samples for gold analysis are shipped to SGS Mineral Services of Kalgoorlie for preparation and assaying by 50 gram fire assay analytical method. All gold diamond drilling samples submitted for assay include at least one blank and one Certified Reference Material ("CRM") per batch, plus one CRM or blank every 20 samples. In samples with observed visible gold mineralization, a coarse blank is inserted after the visible gold mineralization to serve as both a coarse flush to prevent contamination of subsequent samples and a test for gold smearing from one sample to the next which may have resulted from inadequate cleaning of the crusher and pulveriser. The lab is also required to undertake a minimum of 1 in 20 wet screens on pulverised samples to ensure a minimum 85% passing at -75µm. No significant QA/QC issues have arisen in recent drilling results.</li> </ul>

Criteria	JORC Code Explanation	Commentary
		<ul style="list-style-type: none"> <li>Photon Assay was introduced in 2023 for Beta Hunt grade control samples. PhotonAssay™ technology (Chrysol Corporation Limited) is a rapid, non-destructive analysis of gold and other elements in mineral samples. It is based on the principle of gamma activation, which uses high energy x-rays to excite changes to the nuclear structure of selected elements. The decay is then measured to give a gold analysis. Each sample is run through two cycles with a radiation time of 15s. This methodology is insensitive to material type and thus does not require fluxing chemicals as in the fire assay methodology. Highlights of the PhotonAssay™ process are as follows: <ul style="list-style-type: none"> <li>The process is non-destructive; the same sample accuracy can be determined by repeat measurements of the same sample. In addition, the instrument runs a precision analysis for each sample relating to the instrument precision <ul style="list-style-type: none"> <li>The process allows for an increased sample size, about 500 g of crushed product.</li> </ul> </li> <li>The crushed material is not pulverised, as in the fire assay process; this ensures that gold is not smeared or lost during pulverisation (especially important if there is an expectation of visible gold that is being analysed)</li> </ul> </li> <li>Historical drilling has used a combination of Fire Assay, Aqua Regia and PAL analysis.</li> <li>These assay methodologies are appropriate for the resources in question.</li> </ul>
<b>Verification of sampling and assaying</b>	<ul style="list-style-type: none"> <li>The verification of significant intersections by either independent or alternative company personnel.</li> <li>The use of twinned holes.</li> <li>Documentation of primary data, data entry procedures, data verification, data storage (physical and electronic) protocols.</li> <li>Discuss any adjustment to assay data.</li> </ul>	<ul style="list-style-type: none"> <li>No independent or alternative verifications are available.</li> <li>Virtual twinned holes have been drilled in several instances across all sites with no significant issues highlighted. Drillhole data is also routinely confirmed by development assay data in the operating environment.</li> <li>Primary data is collected utilising LogChief. The information is imported into a SQL database server and verified.</li> <li>All data used in the calculation of resources and reserves are compiled in databases (underground and open pit) which are overseen and validated by senior geologists.</li> <li>No adjustments have been made to any assay data.</li> </ul>
<b>Location of data points</b>	<ul style="list-style-type: none"> <li>Accuracy and quality of surveys used to locate drill holes (collar and down-hole surveys), trenches, mine workings and other locations used in Mineral Resource estimation.</li> <li>Specification of the grid system used.</li> <li>Quality and adequacy of topographic control.</li> </ul>	<ul style="list-style-type: none"> <li>All data is spatially oriented by survey controls via direct pickups by the survey department. Drillholes are all surveyed downhole, deeper holes with a Gyro tool if required, the majority with single / multishot cameras.</li> <li>All drilling and resource estimation is preferentially undertaken in local mine grid at the various sites.</li> <li>Topographic control is generated from a combination of remote sensing methods and ground-based surveys. This methodology is adequate for the resources in question.</li> </ul>
<b>Data spacing and distribution</b>	<ul style="list-style-type: none"> <li>Data spacing for reporting of Exploration Results.</li> <li>Whether the data spacing and distribution is sufficient to establish the degree of geological and grade continuity appropriate for the Mineral Resource and Ore Reserve estimation procedure(s) and classifications applied.</li> <li>Whether sample compositing has been applied.</li> </ul>	<ul style="list-style-type: none"> <li>Data spacing is variable dependent upon the individual orebody under consideration. A lengthy history of mining has shown that this approach is appropriate for the Mineral Resource Estimation process and to allow for classification of the resources as they stand.</li> <li>Compositing is carried out based upon the modal sample length of each individual domain.</li> </ul>
<b>Orientation of data in relation to geological structure</b>	<ul style="list-style-type: none"> <li>Whether the orientation of sampling achieves unbiased sampling of possible structures and the extent to which this is known, considering the deposit type.</li> <li>If the relationship between the drilling orientation and the orientation of key mineralised structures is considered to have introduced a sampling bias, this should be assessed and reported if material.</li> </ul>	<ul style="list-style-type: none"> <li>Drilling intersections are nominally designed to be normal to the orebody as far as underground infrastructure constraints / topography allows.</li> <li>Development sampling is nominally undertaken normal to the various orebodies.</li> <li>Where drilling angles are sub optimal the number of samples per drill hole used in the estimation has been limited to reduce any potential bias.</li> <li>It is not considered that drilling orientation has introduced an appreciable sampling bias.</li> </ul>

Criteria	JORC Code Explanation	Commentary
<b>Sample security</b>	<ul style="list-style-type: none"> <li>The measures taken to ensure sample security.</li> </ul>	<ul style="list-style-type: none"> <li>For samples assayed at on-site laboratory facilities, samples are delivered to the facility by Company staff. Upon delivery the responsibility for sample security and storage falls to the independent third-party operators of these facilities.</li> <li>For samples assayed off-site, samples are delivered to a third-party transport service, who in turn relay them to the independent laboratory contractor. Samples are stored securely until they leave site.</li> </ul>
<b>Audits or reviews</b>	<ul style="list-style-type: none"> <li>The results of any audits or reviews of sampling techniques and data</li> </ul>	<ul style="list-style-type: none"> <li>Site generated resources and reserves and the parent geological data is routinely reviewed by the Westgold Corporate technical team.</li> </ul>

## SECTION 2: REPORTING OF EXPLORATION RESULTS

(Criteria listed in the preceding section also apply to this section.)

Criteria	JORC Code Explanation	Commentary
<b>Mineral tenement and land tenure status</b>	<ul style="list-style-type: none"> <li>Type, reference name/number, location and ownership including agreements or material issues with third parties such as joint ventures, partnerships, overriding royalties, native title interests, historical sites, wilderness or national park and environmental settings.</li> <li>The security of the tenure held at the time of reporting along with any known impediments to obtaining a licence to operate in the area.</li> </ul>	<ul style="list-style-type: none"> <li>Native title interests are recorded against several WGX tenements.</li> <li>The CMGP tenements are held by the Big Bell Gold Operations (BBGO) of which Westgold has 100% ownership.</li> <li>Several third-party royalties exist across various tenements at CMGP, over and above the state government royalty.</li> <li>The Fortnum Gold Project tenure is 100% owned by Westgold through subsidiary company Aragon Resources Pty. Ltd. Various Royalties apply to the package. The most pertinent being:             <ul style="list-style-type: none"> <li>State Government – 2.5% NSR</li> </ul> </li> <li>Beta Hunt is owned by Westgold through a sub-lease agreement with St Ives Gold Mining Company Pty Ltd (SIGMC), which gives Westgold the right to explore and mine gold and nickel.</li> <li>Royalties on gold production from Beta Hunt are as follows:             <ul style="list-style-type: none"> <li>A royalty to the state government equal to 2.5% of the royalty value of gold metal produced; and</li> <li>Royalties to third parties equal to 4.75% of recovered gold less allowable deductions.</li> </ul> </li> <li>The Higginsville-Lakewood Operations include the Higginsville and Lakewood Mills and associated infrastructure, mining operations and exploration prospects which are located on 242 tenements owned by Westgold and covers approximately 1,800km<sup>2</sup> total area.</li> <li>Royalties on the HGO gold production are as follows:             <ul style="list-style-type: none"> <li>Production payments of up to 1% of gross gold revenue over various tenements to traditional land owners.</li> <li>Royalty equal to 2.5% of recovered gold to the Government of Western Australia; and</li> <li>Various third parties hold rights to receive royalties in respect of gold (and in some cases other minerals or metals) recovered from the tenements.</li> </ul> </li> <li>The tenure is currently in good standing</li> <li>There are no known issues regarding security of tenure.</li> <li>There are no known impediments to continued operation.</li> <li>WGX operates in accordance with all environmental conditions set down as conditions for grant of the leases.</li> </ul>

Criteria	JORC Code Explanation	Commentary
<b>Exploration done by other parties</b>	<ul style="list-style-type: none"> <li>Acknowledgment and appraisal of exploration by other parties</li> </ul>	<ul style="list-style-type: none"> <li>The CMGP tenements have an exploration and production history in excess of 100 years.</li> <li>The FGP tenements have an exploration and production history in excess of 30 years.</li> <li>BH tenements have an exploration and production history in excess of 60 years.</li> <li>HGO tenements have an exploration and production history in excess of 40 years.</li> <li>Westgold work has generally confirmed the veracity of historic exploration data.</li> </ul>
<b>Geology</b>	<ul style="list-style-type: none"> <li>Deposit type, geological setting and style of mineralisation.</li> </ul>	<p>BHO</p> <ul style="list-style-type: none"> <li>Beta Hunt is situated within the central portion of the Norseman-Wiluna greenstone belt in a sequence of mafic/ultramafic and felsic rocks on the southwest flank of the Kambalda Dome.</li> <li>Gold mineralisation occurs mainly in subvertical shear zones in the Lunnon Basalt and is characterised by shear and extensional quartz veining within a halo of biotite/pyrite alteration. Within these shear zones, coarse gold sometimes occurs where the shear zones intersect iron-rich sulphidic metasediments in the Lunnon Basalt or nickel sulphides at the base of the Kambalda Komatiite (ultramafics). The mineralised shears are represented by A-Zone, Western Flanks, Larkin and Mason zones.</li> </ul> <p>CGO</p> <ul style="list-style-type: none"> <li>CGO is located in the Achaean Murchison Province, a granite-greenstone terrane in the northwest of the Yilgarn Craton. Greenstone belts trending north-northeast are separated by granite-gneiss domes, with smaller granite plutons also present within or on the margins of the belts.</li> <li>Mineralisation at Big Bell is hosted in the shear zone (Mine Sequence) and is associated with the post-peak metamorphic retrograde assemblages. Stibnite, native antimony and trace arsenopyrite are disseminated through the K-feldspar-rich lode schist. These are intergrown with pyrite and pyrrhotite and chalcopyrite. Mineralisation outside the typical Big Bell host rocks (KPSH), for example 1,600N and Shocker, also display a very strong W-As-Sb geochemical halo.</li> <li>Numerous gold deposits occur within the Cuddingwarra Project area, the majority of which are hosted within the central mafic-ultramafic ± felsic porphyry sequence. Within this broad framework, mineralisation is shown to be spatially controlled by competency contrasts across, and flexures along, layer-parallel D2 shear zones, and is maximised when transected by corridors of northeast striking D3 faults and fractures.</li> <li>The Great Fingall Dolerite hosts the majority gold mineralisation within the portion of the greenstone belt proximal to Cue (The Day Dawn Project Area). Unit AGF3 is the most brittle of all the five units and this characteristic is responsible for its role as the most favourable lithological host to gold mineralisation in the Greenstone Belt.</li> </ul> <p>FGO</p> <ul style="list-style-type: none"> <li>The Fortnum deposits are Paleoproterozoic shear-hosted gold deposits within the Fortnum Wedge, a localised thrust duplex of Narracoota Formation within the overlying Ravelstone Formation. Both stratigraphic formations comprise part of the Bryah Basin in the Capricorn Orogen, Western Australia.</li> <li>The Horseshoe Cassidy deposits are hosted within the Ravelstone Formation (siltstone and argillite) and Narracoota Formation (highly altered, moderate to strongly deformed mafic to ultramafic rocks). The main zone of mineralisation is developed within a horizon of highly altered magnesian basalt. Gold mineralisation is associated with strong vein stock works that are confined to the altered mafic. Alteration consists of two types: stockwork proximal silica-carbonate-fuchsite-haematite-pyrite and distal silica-haematite-carbonate+/- chlorite.</li> <li>The Peak Hill district represents remnants of a Proterozoic fold belt comprising highly deformed trough and shelf sediments and mafic / ultramafic volcanics, which are generally moderately metamorphosed (except for the Peak Hill Metamorphic Suite).</li> </ul>

Criteria	JORC Code Explanation	Commentary
		<p>HGO</p> <ul style="list-style-type: none"> <li>The Higginsville Gold Operation is located in the Eastern Goldfields Superterrane of the Archean Yilgarn Craton. The bulk of the Higginsville tenement package is located almost entirely within the well-mineralised Kalgoorlie Terrane, between the gold mining centres of Norseman and St Ives. HGO can be sub-divided into seven major geological domains: Trident Line of Lode, Chalice, Lake Cowan, Southern Paleo-channels, Mt Henry, Polar Bear Group and Spargos Project area.</li> <li>Majority of mineralisation along the Trident Line of Lode are hosted within the Poseidon gabbro and high-MgO dyke complexes in the south. The Poseidon Gabbro is a thick, weakly-differentiated gabbroic sill, which strikes north-south and dips 60° to the east, is over 500 m thick and 2.5 km long. The mineralisation is hosted within or marginal to quartz veining and is structurally and lithologically controlled.</li> <li>The Chalice Deposit is located within a north-south trending, 2 km to 3 km wide greenstone terrane, flanked on the west calc-alkaline granitic rocks of the Boorabin Batholith and to the east by the Pioneer Dome Batholith. The dominant unit that hosts gold mineralisation is a fine grained, weak to strongly foliated amphibole-plagioclase amphibolite, with a typically lepidoblastic (mineralogically aligned and banded) texture. It is west-dipping and generally steep, approximately 60° to 75°.</li> <li>The Lake Cowan project area is situated near the centre of a regional anticline between the Zuleika and Lefroy faults, with the local geology of the area made more complex by the intrusion of the massive Proterozoic Binneringie dyke. The majority of mineralisation at the Lake Cowan Mining Centre is hosted within an enclave of Archaean material surrounded by the Binneringie dyke.</li> <li>Mineralised zones within the Southern Paleo Channels network comprise both placer gold, normally near the base of the channel-fill sequences, and chemically-precipitated secondary gold within the channel-fill materials and underlying saprolite. These gold concentrations commonly overlie, or are adjacent to, primary mineralised zones within Archaean bedrock.</li> <li>The Mount Henry Project covers 347km2 of the prolific South Norseman-Wiluna Greenstone belt of the Eastern Goldfields in Western Australia. Although the greenstone rocks from the Norseman area can be broadly correlated with those of the Kalgoorlie – Kambalda region they form a distinct terrain which is bounded on all sides by major regional shears. The Norseman Terrane has prominent banded iron formations which distinguish it from the Kalgoorlie–Kambalda Terrane. The Mount Henry gold deposit is hosted by a silicate facies BIF unit within the Noganyer Formation. Gold mineralisation is predominantly hosted by the silicate facies BIF unit but is also associated with minor meta-basalt and dolerite units that were mostly emplaced in the BIF prior to mineralisation. The footwall to the BIF is characterised by a sedimentary schistose unit and the hanging wall by the overlying dolerites of the Woolyeener Formation. The Mount Henry gold deposit is classified as an Archean, orogenic shear hosted deposit. The main lode is an elongated, shear-hosted body, 1.9km long by 6 – 10 metres wide and dips 65-75 degrees towards the west.</li> <li>The Polar Bear project is situated within the Archaean Norseman-Wiluna Belt which locally includes basalts, komatiites, metasediments, and felsic volcanoclastics. The primary gold mineralisation is related to hydrothermal activity during multiple deformation events. Indications are that gold mineralisation is focused on or near to the stratigraphic boundary between the Killaloe and Buldania Formation.</li> </ul>

Criteria	JORC Code Explanation	Commentary
		<ul style="list-style-type: none"> <li>The Spargos Project occurs within Coolgardie Domain of the Kalgoorlie Terrane. The area is bounded by the Zuleika Shear to the east and the Kunanalling Shear to the west. The geological setting comprises tightly-folded north-south striking ultramafic and mafic volcanic rocks at the northern closure Widgiemooltha Dome. The project lies on the general trend of the Kunanalling / Karramindie Shear corridor, a regional shear zone that hosts significant mineralisation to the north at Ghost Crab (Mount Marion), Wattle Dam to the south, the Penfolds group and Kunanalling. The regional prospective Zuleika Shear lies to the east of the project. The tenements are prospective for vein and shear hosted gold deposits as demonstrated by Spargos Reward and numerous other gold workings and occurrences. Gold mineralisation at Spargos Reward is hosted by a coarse-grained pyrite-arsenopyrite lode in quartz-sericite schists, between strongly biotitic altered greywacke to the east and quartz-sericite-fuchsite-pyrite altered felsic tuff to the west. Gold mineralisation is associated with very little quartz veining which is atypical for many deposits in region. The Spargos Reward setting has been described variously as a low-quartz sulphidic mesothermal gold system or as a Hemlo style syn-sedimentary occurrence.</li> </ul>
		<p>MGO</p> <ul style="list-style-type: none"> <li>MGO is located in the Achaean Murchison Province, a granite-greenstone terrane in the northwest of the Yilgarn Craton. Greenstone belts trending north-northeast are separated by granite-gneiss domes, with smaller granite plutons also present within or on the margins of the belts.</li> <li>The Paddy's Flat area is located on the western limb of a regional fold, the Polelle Syn- cline, within a sequence of mafic to ultramafic volcanics with minor interflow sediments and banded iron-formation. The sequence has also been intruded by felsic porphyry dykes prior to mineralisation. Mineralisation is located along four sub-parallel trends at Paddy's Flat which can be summarized as containing three dominant mineralisation styles:               <ul style="list-style-type: none"> <li>Sulphide replacement BIF hosted gold. Quartz vein hosted shear-related gold.</li> <li>Quartz-carbonate-sulphide stockwork vein and alteration related gold.</li> </ul> </li> <li>The Yaloginda area is a gold-bearing Archaean greenstone belt situated ~15km south of Meekatharra. The deposits in the area are hosted in a strained and metamorphosed volcanic sequence that consists primarily of ultramafic and high-magnesium basalt with minor komatiite, peridotite, gabbro, tholeiitic basalt and interflow sediments. The sequence was intruded by a variety of felsic porphyry and intermediate sills and dykes.</li> <li>The Reedy's mining district is located approximately 15 km to the south-east to Meekatharra and to the south of Lake Annean. The Reedy gold deposits occur with- in a north-south trending greenstone belt, two to five kilometres wide, composed of volcano-sedimentary sequences and separated multiphase syn- and post-tectonic granitoid complexes. Structurally controlled the gold occur.</li> </ul>
<p><b>Drill hole Information</b></p>	<ul style="list-style-type: none"> <li>A summary of all information material to the understanding of the exploration results including a tabulation of the following information for all Material drill holes:               <ul style="list-style-type: none"> <li>easting and northing of the drill hole collar</li> <li>elevation or RL (Reduced Level – elevation above sea level in metres) of the drill hole collar</li> <li>dip and azimuth of the hole</li> <li>down hole length and interception depth</li> </ul> </li> </ul>	<ul style="list-style-type: none"> <li>Tables containing drillhole collar, downhole survey and intersection data are included in the body of the announcement.</li> </ul>

Criteria	JORC Code Explanation	Commentary
	<ul style="list-style-type: none"> <li>○ hole length.</li> <li>• If the exclusion of this information is justified on the basis that the information is not Material and this exclusion does not detract from the understanding of the report, the Competent Person should clearly explain why this is the case.</li> </ul>	
<b>Data aggregation methods</b>	<ul style="list-style-type: none"> <li>• In reporting Exploration Results, weighting averaging techniques, maximum and/or minimum grade truncations (e.g., cutting of high grades) and cut-off grades are usually Material and should be stated.</li> <li>• Where aggregate intercepts incorporate short lengths of high-grade results and longer lengths of low-grade results, the procedure used for such aggregation should be stated and some typical examples of such aggregations should be shown in detail.</li> <li>• The assumptions used for any reporting of metal equivalent values should be clearly stated.</li> </ul>	<ul style="list-style-type: none"> <li>• All results presented are length weighted.</li> <li>• No high-grade cuts are used.</li> <li>• Reported results contain no more than two contiguous metres of internal dilution below 0.5g/t. For Beta Hunt, a cut off of 1 g/t Au with maximum internal waste of 2m is used to define significant intercepts.</li> <li>• Results are reported above a variety of gram / metre cut-offs dependent upon the nature of the hole. These are cut-offs are clearly stated in the relevant tables.</li> <li>• Unless indicated to the contrary, all results reported are downhole width.</li> <li>• Given restricted access in the underground environment the majority of drillhole intersections are not normal to the orebody.</li> </ul>
<b>Relationship between mineralisation widths and intercept lengths</b>	<ul style="list-style-type: none"> <li>• These relationships are particularly important in the reporting of Exploration Results.</li> <li>• If the geometry of the mineralisation with respect to the drill hole angle is known, its nature should be reported.</li> <li>• If it is not known and only the down hole lengths are reported, there should be a clear statement to this effect (e.g., 'down hole length, true width not known').</li> </ul>	<ul style="list-style-type: none"> <li>• Unless indicated to the contrary, all results reported are downhole width.</li> <li>• Given restricted access in the underground environment the majority of drillhole intersections are not normal to the orebody.</li> </ul>
<b>Diagrams</b>	<ul style="list-style-type: none"> <li>• Appropriate maps and sections (with scales) and tabulations of intercepts should be included for any significant discovery being reported. These should include, but not be limited to a plan view of drill hole collar locations and appropriate sectional views.</li> </ul>	<ul style="list-style-type: none"> <li>• Appropriate diagrams are provided in the body of the release if required.</li> </ul>
<b>Balanced reporting</b>	<ul style="list-style-type: none"> <li>• Where comprehensive reporting of all Exploration Results is not practicable, representative reporting of both low and high grades and/or widths should be practiced to avoid misleading reporting of Exploration Results.</li> </ul>	<ul style="list-style-type: none"> <li>• Appropriate balance in exploration results reporting is provided.</li> </ul>
<b>Other substantive exploration data</b>	<ul style="list-style-type: none"> <li>• Other exploration data, if meaningful and material, should be reported including (but not limited to): geological observations; geophysical survey results; geochemical survey results; bulk samples – size and method of treatment; metallurgical test results; bulk density, groundwater, geotechnical and rock characteristics; potential deleterious or contaminating substances.</li> </ul>	<ul style="list-style-type: none"> <li>• There is no other substantive exploration data associated with this release.</li> </ul>
<b>Further work</b>	<ul style="list-style-type: none"> <li>• The nature and scale of planned further work (e.g. tests for lateral extensions or depth extensions or large-scale step-out drilling).</li> <li>• Diagrams clearly highlighting the areas of possible extensions, including the main geological interpretations and future drilling areas, provided this information is not commercially sensitive.</li> </ul>	<ul style="list-style-type: none"> <li>• Ongoing surface and underground exploration activities will be undertaken to support continuing mining activities at Westgold Gold Operations.</li> </ul>