

## OUTSTANDING DRILL RESULTS AT THE COWBOY STATE MINE AREA FOR WYOMING RARE (USA) INC.

### DRILL INTERCEPTS INCLUDES 299.1 METRES AT 4,393 PPM TREO

#### Highlights

- Assay results for 756 samples from the first 11 core and reverse circulation holes, has been received following the completion of the 2024 drilling campaign.
- Assays show elevated rare earth mineralisation from surface to depths of at least 300m.
- Significant results include:
  - **HC24-RM035: 299.1m @ 4,393 ppm Total Rare Earth Oxides (“TREO”)**
  - **HC24-RM023: 117.5m @ 4,006 ppm TREO**
  - **HC24-RM026: 81m @ 3,673 ppm TREO**
  - **HC24-RM028: 81m @ 3,602 ppm TREO**
  - **HC24-RM030: 81m @ 3,652 ppm TREO**
  - **HC24-RM031: 81m @ 2,698 ppm TREO**
- Deposit remains open at depth.
- The results of this drill program to be used to update geological models, resource estimate and input for the upcoming Prefeasibility Study (“PFS”).

American Rare Earths (**ASX: ARR | OTCQX: ARRNF | ADR: AMRRY**) (“**ARR**” or the “**Company**”) is pleased to announce the first assay results from the 2024 drilling campaign at the Cowboy State Mine (“**CSM**”) area of its wholly owned subsidiary, Wyoming Rare (USA) Inc (“**WRI**”).

ALS Global provided assay results for 756 samples from 11 core and reverse circulation holes, plus one partial hole. Since drilling concluded final drill hole locations were surveyed and geophysical logs for each drill were collected. Additionally, acoustic televiwer logs were collected in 7 core holes.

Drill hole HC24-RM035 showed an average grade of 4,393 ppm TREO across the entire 299.1m length of the drill hole. The results continue to indicate the deposit remaining open at depth and extending well into Red Mountain. Likewise, drill hole HC24-RM023 has an average TREO grade of 4,006 ppm over 117.5m. WRI geologists prepared and shipped 54 core samples to WSP for geomechanical analysis. WRI also provided WSP with televiwer logs collected during the program.

#### Chris Gibbs, CEO, commented:

"These first assay results continue to demonstrate the upside potential of the Halleck Creek district. The 2024 drilling indicated elevated rare earth mineralisation of the CSM area extending well into Red Mountain. The sheer size and scale of the deposit continues to grow as these results confirm the deposit remaining open from surface to depths of at least 300m.

“These drill holes allow us to expand our resource estimates into Red Mountain in the western portion of the CSM area. Our team continues to focus development on the CSM area, a portion of the Halleck Creek Wyoming State Tenements. With a pathway to State permitting and recent Government funding, the CSM area represents a unique opportunity to work with the State of Wyoming to rapidly advance the Project. When the remaining assay results are received, we will update our geological models and resource estimates. This data, together with the results of geomechanical test work, will provide the basis for detailed mine planning within our upcoming PFS.”

### Technical Summary

ALS Global provided results for 756 samples from 11 drill holes and one partial drill hole. The complete assay results from these first holes are listed in Appendix B below. **Table A** summarises the total thickness and average TREO grade of samples exceeding 1,500 ppm TREO in each drill hole received to date. Current correlations show TREO values range from 320 ppm to 8,317 ppm within the RMP. **Figure 1** shows the locations of each drill hole, as well as a summary of mineralised thickness. The locations of each drill hole are listed in Table B.

Figure 2 illustrates TREO grade along drill holes with assay data.

**Table A - Thickness and Estimated TREO Grade of Samples  $\geq$  1,500ppm TREO**

Drill Hole	Hole Type	Thickness	TREO	Count
HC24-RM023	HQ	117.5	4,006	39
HC24-RM024	HQ	202.9	1,986	93
HC24-RM025	HQ	0.00	0	0
HC24-RM026	RC	81	3,673	54
HC24-RM027	HQ	30.4	1,839	13
HC24-RM028	RC	81	3,602	54
HC24-RM029	HQ	3	1,386	1
HC24-RM030	RC	81	3,652	54
HC24-RM031	RC	81	2,698	54
HC24-RM032	RC	21	2,652	14
HC24-RM034	HQ	67.4	2,237	26
HC24-RM035	HQ	299.1	4,393	113

WRI geologists are also using the assay data, and whole rock geochemistry to update lithological designations of specific rock types within the Red Mountain pluton. Geological modelling domains are also being updated based on these rock type designations. Once the remaining assay samples are received from ALS geological models will be updated to reflect all data at the CSM Area.

**Table B - Surveyed Collar Coordinates of 2024 Exploration Holes**

DHID	Easting	Northing	Collar	Total Depth	Azimuth	Dip	Hole Type
HC24-RM023	475,676.93	4,632,562.21	1,752.98	120.00	0.00	-90.00	HQ
HC24-RM024	475,679.87	4,632,435.06	1,753.73	302.00	0.00	-90.00	HQ
HC24-RM025	475,440.72	4,632,385.57	1,759.08	101.00	0.00	-90.00	HQ
HC24-RM026	475,678.12	4,632,713.30	1,748.62	81.00	0.00	-90.00	RC
HC24-RM027	475,768.50	4,632,463.33	1,751.62	100.00	90.00	-65.00	HQ
HC24-RM028	475,532.08	4,632,718.96	1,756.76	81.00	0.00	-90.00	RC
HC24-RM029	475,330.83	4,632,088.88	1,765.04	80.00	115.00	-65.00	HQ
HC24-RM030	475,604.24	4,632,641.98	1,752.99	81.00	270.00	-65.00	RC
HC24-RM031	475,505.78	4,632,601.62	1,756.16	81.00	0.00	-90.00	RC
HC24-RM032	475,681.62	4,632,270.04	1,755.35	81.00	0.00	-90.00	RC
HC24-RM033	475,475.08	4,632,248.37	1,760.32	81.00	0.00	-90.00	RC
HC24-RM034	475,152.53	4,632,053.15	1,771.07	150.10	0.00	-90.00	HQ
HC24-RM035	475,179.48	4,632,209.27	1,767.95	300.85	250.00	-45.00	HQ
HC24-RM036	475,560.30	4,632,436.00	1,756.87	81.00	0.00	-90.00	RC
HC24-RM037	475,442.22	4,632,182.97	1,761.76	81.00	0.00	-90.00	RC
HC24-RM038	475,319.73	4,632,251.02	1,764.13	81.00	350.00	-65.00	RC
HC24-RM039	475,308.41	4,632,133.48	1,765.68	79.50	0.00	-90.00	RC
HC24-RM040	475,239.63	4,632,085.39	1,768.07	111.00	0.00	-90.00	RC
HC24-RM041	475,225.51	4,631,981.84	1,770.78	111.00	140.00	-55.00	RC
HC24-RM042	475,141.20	4,631,928.38	1,775.65	50.00	250.00	-45.00	HQ
HC24-RM043	475,131.20	4,631,983.57	1,773.35	150.00	0.00	-90.00	HQ
HC24-RM044	475,189.93	4,632,209.13	1,767.33	175.00	300.00	-45.00	HQ
HC24-RM045	475,830.25	4,632,723.27	1,744.85	57.00	160.00	-65.00	HQ

This announcement is authorised for release by the CEO of American Rare Earths.

#### Further information

Jane Morgan

Investor and Media Relations

[jm@janemorganmanagement.com.au](mailto:jm@janemorganmanagement.com.au)

#### Competent Persons Statement:

The information in this document is based on company work performed in July and August 2024. This work was reviewed and approved for release by Mr Dwight Kinnes (Society of Mining Engineers #4063295RM) who is employed by American Rare Earths and has sufficient experience which is relevant to the style of mineralisation and type of deposit under consideration and to the activity which he is undertaking to qualify as a Competent Person as defined in the 2012 JORC Code. Mr Kinnes consents to the inclusion in the report of the matters based upon the information in the form and context in which it appears.

[American Rare Earths](#) (ASX: ARR | OTCQX: ARRNF | ADR: AMRRY) owns Wyoming Rare (USA) Inc. which is focused on the development of the Halleck Creek Project, WY. It also owns La Paz, AZ rare earth deposit. Both can potentially become the largest and most sustainable rare earth projects in North America. The Company is developing environmentally friendly and cost-effective extraction and processing methods to meet the rapidly increasing demand for resources essential to the clean energy transition and US national security. The Company continues to evaluate other exploration opportunities and is collaborating with US Government-supported R&D to develop efficient processing and separation techniques of (REEs) elements to help ensure a renewable future.

For personal use only

For personal use only

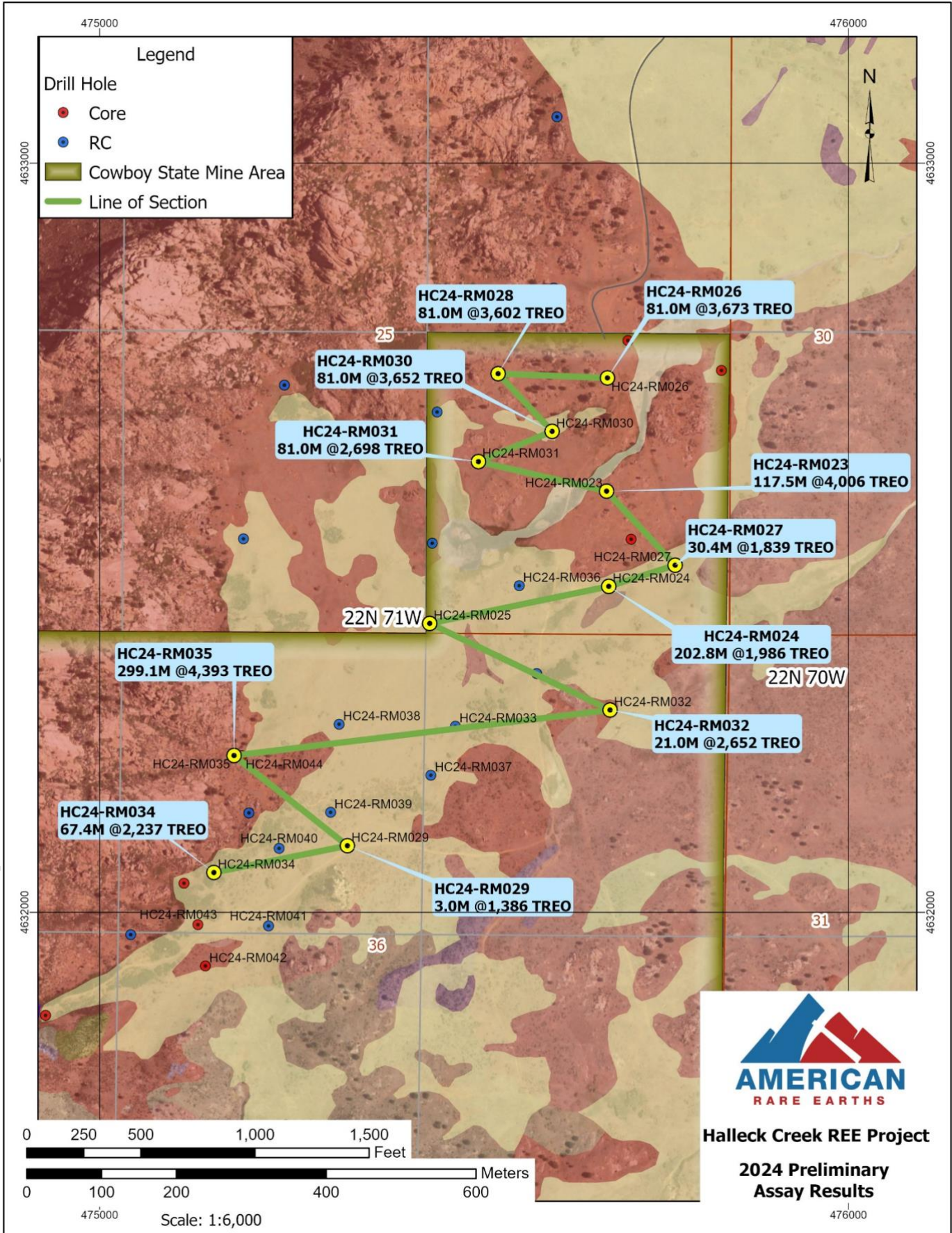


Figure 1 – 2024 Drill Hole Locations and Assay Summaries

For personal use only

### Cowboy State Mine Assays

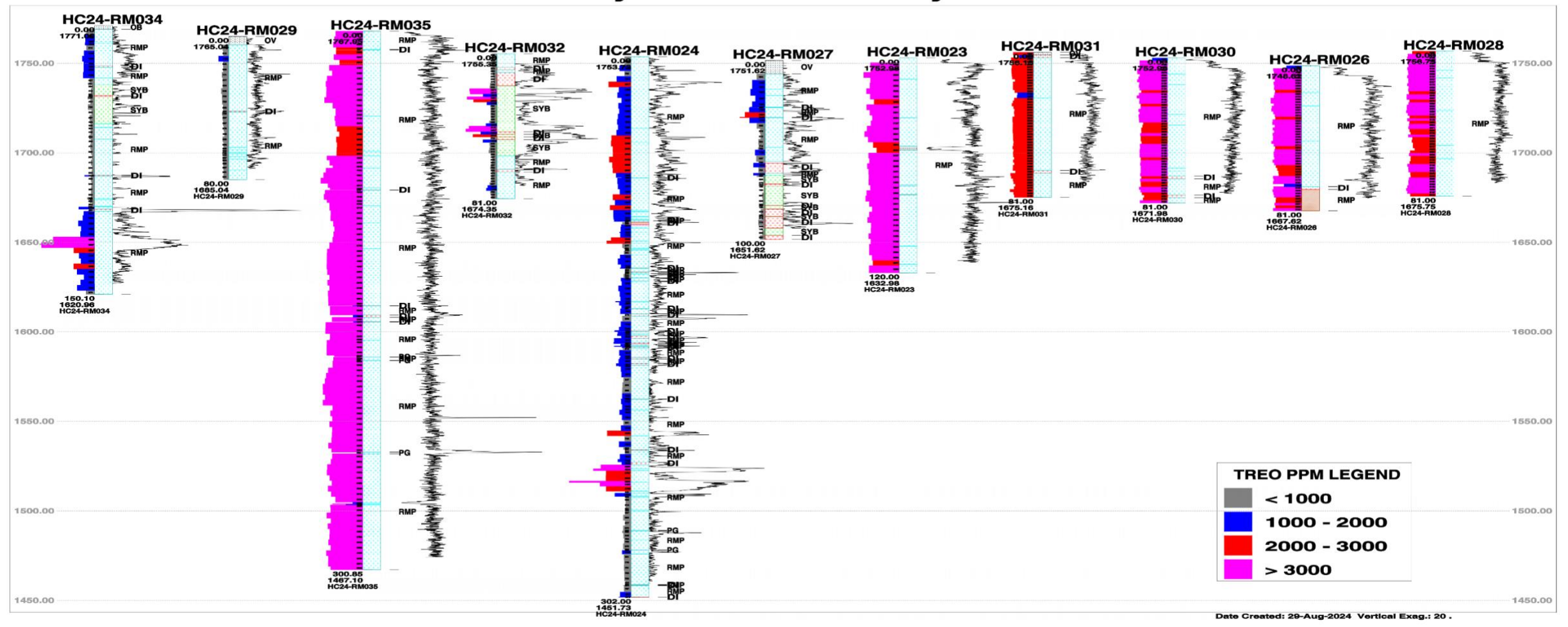


Figure 2 – Fence Diagram of 2024 Preliminary Assays

**APPENDIX A – JORC TABLE 1**

<b>Section 1 Sampling Techniques and Data</b>		
(Criteria in this section apply to all succeeding sections.)		
<b>Criteria</b>	<b>JORC Code explanation</b>	<b>Commentary</b>
<i>Sampling techniques</i>	<i>Nature and quality of sampling (e.g. cut channels, random chips, or specific specialised industry standard measurement tools appropriate to the minerals under investigation, such as downhole gamma sondes, handheld XRF instruments, etc.). These examples should not be taken as limiting the broad meaning of sampling.</i>	WRI drilled 23 drill holes in the Cowboy State Mine area. 11 HQ holes completed with a total length of 1,585 meters (5,309 feet). 672 core samples have been collected, logged and shipped to ALS global for splitting and assay. 12 reverse circulation holes completed with a total length of 1,031 metres (3,381 feet). 689 RC samples were collected, logged and shipped to ALS global for assay.
	<i>Include reference to measures taken to ensure sample representivity and the appropriate calibration of any measurement tools or systems used.</i>	RC samples were collected every 1.5 meters. Core samples were collected every 3 meters, or at lithological contacts observed in core.
	<i>Aspects of the determination of mineralisation that are Material to the Public Report.</i>	The Red Mountain Pluton (RMP) of the Halleck Creek Rare Earths Project is a distinctly layered monzonitic to syenitic body which exhibits significant and widespread REE enrichment. Enrichment is dependent on allanite abundance, a sorosilicate of the epidote group. Allanite occurs in all three units of the RMP, the clinopyroxene quartz monzonite, the biotite-hornblende quartz syenite, and the fayalite monzonite, in variable abundances.
	<i>In cases where 'industry standard' work has been done, this would be relatively simple (e.g. 'reverse circulation drilling was used to obtain 1 m samples from which 3 kg was pulverised to produce a 30 g charge for fire assay'). In other cases, more explanation may be required, such as where there is coarse gold that has inherent sampling problems. Unusual commodities or mineralisation types (e.g. submarine nodules) may warrant disclosure of detailed information.</i>	RC samples were collected using a rotary splitter to prepare three samples across each 1.5 meter interval. Each sample was logged by geologists and given a unique sample ID and prepared for assay  Core samples were logged in detail by geologists for lithology, alteration and geotechnical attributes. Homogenous lithology was broken into 3m samples. Shorter samples were collected at lithologic contacts observed in core.

For personal use only

<b>Section 1 Sampling Techniques and Data</b>		
(Criteria in this section apply to all succeeding sections.)		
<b>Criteria</b>	<b>JORC Code explanation</b>	<b>Commentary</b>
Drilling techniques	<i>Drill type (e.g. core, reverse circulation, open-hole hammer, rotary air blast, auger, Bangka, sonic, etc.) and details (e.g. core diameter, triple or standard tube, depth of diamond tails, face-sampling bit or another type, whether the core is oriented and if so, by what method, etc.).</i>	WRI drilled 12 reverse circulation drill holes with samples collected using a rotary splitter.  WRI drilled 11 HQ core holes. Angle holes were oriented
	<i>Method of recording and assessing core and chip sample recoveries and results assessed.</i>	Core recoveries were calculated by WRI geologists.
Drill sample recovery	<i>Measures are taken to maximise sample recovery and ensure the representative nature of the samples.</i>	Core recoveries were calculated by WRI geologists.
	<i>Whether a relationship exists between sample recovery and grade and whether sample bias may have occurred due to preferential loss/gain of fine/coarse material.</i>	There is not a relationship between sample recovery and sample bias. Allanite occurs as phenocrysts in a plutonic body.
Logging	<i>Whether core and chip samples have been geologically and geotechnically logged to a level of detail to support appropriate Mineral Resource estimation, mining studies and metallurgical studies.</i>	All rock samples were geologically and geotechnically logged WRI geologists familiar with the deposit. Lithology, alteration, geotechnical parameters were recorded for each sample.
	<i>Whether logging is qualitative or quantitative in nature. Core (or costean, channel, etc.) photography.</i>	Logging of rock samples are quantitative adhering to methods established by WRI.
	<i>The total length and percentage of the relevant intersections logged.</i>	Rare earth mineralization occurs across the rocks of the RMP. All lengths of RMP material are relevant.
Sub-sampling techniques and sample preparation	<i>If core, whether cut or sawn and whether quarter, half or all core taken.</i>	ALS global is splitting the core into two halves.
	<i>If non-core, whether riffled, tube sampled, rotary split, etc. and whether sampled wet or dry.</i>	RC samples were collected using a rotary splitter into three samples.

<b>Section 1 Sampling Techniques and Data</b>		
(Criteria in this section apply to all succeeding sections.)		
<b>Criteria</b>	<b>JORC Code explanation</b>	<b>Commentary</b>
	<i>For all sample types, the nature, quality and appropriateness of the sample preparation technique.</i>	All core samples were dry. Sample preparation: 1kg samples split to 250g for pulverising to -75 microns. Sample analysis: 0.5g charge assayed by ICP-MS technique.
	<i>Quality control procedures adopted for all sub-sampling stages to maximise the representivity of samples.</i>	WRI geologists added blanks, CRM and identified duplicate samples across each drill hole using establish company standards.
	<i>Measures are taken to ensure that the sampling is representative of the in situ material collected, including, for instance, results for field duplicate/second-half sampling.</i>	WRI geologists added blanks, CRM and identified duplicate samples across each drill hole using establish company standards.
	<i>Whether sample sizes are appropriate to the grain size of the material being sampled.</i>	Allanite is generally well distributed across the core and the sample sizes are representative of the fine grain size of the Allanite.
Quality of assay data and laboratory tests	<i>The nature, quality and appropriateness of the assaying and laboratory procedures used and whether the technique is considered partial or total.</i>	ALS uses a 5-acid digestion and 32 elements by lithium borate fusion and ICP-MS (ME-MS71h). For quantitative results of all elements, including those encapsulated in resistive minerals. These assays include all rare earth elements.
	<i>For geophysical tools, spectrometers, handheld XRF instruments, etc., the parameters used in determining the analysis including instrument make and model, reading times, calibrations factors applied and their derivation, etc.</i>	XRF readings were collected for qualitative indications in the field. XRF was not used for quantitative purposes.
	<i>Nature of quality control procedures adopted (e.g. standards, blanks, duplicates, external laboratory checks) and whether acceptable levels of accuracy (i.e. lack of bias) and precision have been established.</i>	WRI geologists added blanks, CRM and identified duplicate samples across each drill hole using establish company standards.



<b>Section 1 Sampling Techniques and Data</b>		
(Criteria in this section apply to all succeeding sections.)		
<b>Criteria</b>	<b>JORC Code explanation</b>	<b>Commentary</b>
Verification of sampling and assaying	<i>The verification of significant intersections by either independent or alternative company personnel.</i>	Surface samples have not yet been verified by independent personnel.
	<i>The use of twinned holes.</i>	n/a
	<i>Documentation of primary data, data entry procedures, data verification, data storage (physical and electronic) protocols.</i>	Data entry was performed by ARR personnel and checked by ARR geologists. All field logs were scanned and uploaded to company file servers. All photographs were also uploaded to the file server daily. All scanned documents are cross-referenced and directly available from the database.  Assay data from the surface samples was imported into the database directly from electronic spreadsheets sent to ARR from ALS.
	<i>Discuss any adjustment to assay data.</i>	Assay data is stored in the database in elemental form. Reporting of oxide values are calculated in the database using the molar mass of the element and the oxide.
Location of data points	<i>Accuracy and quality of surveys used to locate drill holes (collar and down-hole surveys), trenches, mine workings and other locations used in Mineral Resource estimation.</i>	Preliminary drill hole locations were determined using handheld GPS units. Final drill hole location will be surveyed by a professional land surveyor.
	<i>Specification of the grid system used.</i>	The grid system used to compile data was NAD83 Zone 13N.
	<i>Quality and adequacy of topographic control.</i>	Topography control is +/- 10 ft (3 m).
Data spacing and distribution	<i>Data spacing for reporting of Exploration Results.</i>	Drill hole locations vary between 100 and 300 meters.
	<i>Whether the data spacing and distribution is sufficient to establish the degree of geological and grade continuity appropriate for the Mineral Resource and Ore Reserve estimation procedure(s) and classifications applied.</i>	Geostatistical analysis of previous drilling data indicates that the drill hole spaced defined for the 2024 program is appropriate for minor resource and reserve estimation procedures.

<b>Section 1 Sampling Techniques and Data</b>		
(Criteria in this section apply to all succeeding sections.)		
<b>Criteria</b>	<b>JORC Code explanation</b>	<b>Commentary</b>
	<i>Whether sample compositing has been applied.</i>	Composite have not been applied.
<i>Orientation of data in relation to geological structure</i>	<i>Whether the orientation of sampling achieves unbiased sampling of possible structures and the extent to which this is known, considering the deposit type.</i>	Mineralization at Halleck Creek is a function of fractional crystallization of allanite in syenitic rocks of the Red Mountain Pluton. Mineralization is not structurally controlled and exploration drilling to date does not reveal any preferential mineralization related to geologic structures.
	<i>If the relationship between the drilling orientation and the orientation of key mineralised structures is considered to have introduced a sampling bias, this should be assessed and reported if material.</i>	n/a
<i>Sample security</i>	<i>The measures are taken to ensure sample security.</i>	All samples were in the direct control of company geologists until dispatched to ALS Global. Transport to ALS is handling using licenced and bonded carriers.
<i>Audits or reviews</i>	<i>The results of any audits or reviews of sampling techniques and data.</i>	No external audits or reviews have been conducted to date. However, sampling techniques are consistent with industry standards.

<b>Section 2 Reporting of Exploration Results</b>		
(Criteria listed in the preceding section also apply to this section.)		
<b>Criteria</b>	<b>JORC Code explanation</b>	<b>Commentary</b>
<i>Mineral tenement and land tenure status</i>	<i>Type, reference name/number, location and ownership, including agreements or material issues with third parties such as joint ventures, partnerships, overriding royalties, native title interests, historical sites, wilderness or national park and environmental settings.</i>	ARR controls 365 unpatented federal lode claims and 4 Wyoming State mineral licenses covering 8,124 acres (3,288 ha).
	<i>The security of the tenure held at the time of reporting and any known impediments to obtaining a licence to operate in the area.</i>	No impediments to holding the claims exist. To maintain the claims an annual holding fee of \$165/claim is payable to the BLM. To maintain the State leases minimum rental payments of \$1/acre for 1-5 years; \$2/acre for 6-10 years; and \$3/acre if held for 10 years or longer.
<i>Exploration done by other parties</i>	<i>Acknowledgment and appraisal of exploration by other parties.</i>	Prior to sampling by WIM on behalf of Blackfire Minerals and Zenith there was no previous sampling by any other groups within the ARR claim and Wyoming State Lease blocks.
<i>Geology</i>	<i>Deposit type, geological setting and style of mineralisation.</i>	The REE's occur within Allanite which occurs as a variable constituent of the Red Mountain Pluton. The occurrence can be characterised as a disseminated type rare earth deposit.
<i>Drill hole Information</i>	<i>A summary of all information material to the understanding of the exploration results including a tabulation of the following information for all Material drill holes:</i>	Appendix B contains the assay results received to date from ALS
	<i>easting and northing of the drill hole collar</i>	The surveyed locations and orientations of the drill holes are included in the release.
	<i>elevation or RL (Reduced Level – elevation above sea level in metres) of the drill hole collar</i>	
	<i>dip and azimuth of the hole</i>	
	<i>downhole length and interception depth</i>	
	<i>Hole length.</i>	
<i>If the exclusion of this information is justified on the basis that the information is not Material and this exclusion does not detract from the</i>	n/a	

<b>Section 2 Reporting of Exploration Results</b>		
(Criteria listed in the preceding section also apply to this section.)		
<b>Criteria</b>	<b>JORC Code explanation</b>	<b>Commentary</b>
	<i>understanding of the report, the Competent Person should clearly explain why this is the case.</i>	
<i>Data aggregation methods</i>	<i>In reporting Exploration Results, weighting averaging techniques, maximum and/or minimum grade truncations (e.g. cutting of high grades) and cut-off grades are usually Material and should be stated.</i>	No cut-offs have been applied to the data
	<i>Where aggregate intercepts incorporate short lengths of high-grade results and longer lengths of low-grade results, the procedure used for such aggregation should be stated and some typical examples of such aggregations should be shown in detail.</i>	Assays are representative of each sample.
	<i>The assumptions used for any reporting of metal equivalent values should be clearly stated.</i>	No metal equivalents used.
<i>Relationship between mineralisation widths and intercept lengths</i>	<i>These relationships are particularly important in the reporting of Exploration Results. If the geometry of the mineralisation with respect to the drill hole angle is known, its nature should be reported. If it is unknown and only the downhole lengths are reported, there should be a clear statement to this effect (e.g. 'down hole length, true width not known').</i>	Allanite mineralization observed at Halleck Creek occurs uniformly throughout the CQM and BHS rocks of within the Red Mountain Pluton. Therefore, the geometry of mineralisation does not vary with drill hole orientation or angle within homogeneous rock types.
<i>Diagrams</i>	<i>Appropriate maps and sections (with scales) and tabulations of intercepts should be included for any significant discovery being reported. These should include, but not be limited to, a plan view of drill hole collar locations and appropriate sectional views.</i>	Location information is presented the text above
<i>Balanced reporting</i>	<i>Where comprehensive reporting of all Exploration Results is not practicable, representative reporting of both low and high grades and/or widths should be practised to avoid misleading reporting of Exploration Results.</i>	ALS Global performed analytical analysis of each sample. The tables above show extents of mineralized thickness in each hole received to date.

<b>Section 2 Reporting of Exploration Results</b>		
(Criteria listed in the preceding section also apply to this section.)		
<b>Criteria</b>	<b>JORC Code explanation</b>	<b>Commentary</b>
<i>Other substantive exploration data</i>	<i>Other exploration data, if meaningful and material, should be reported, including (but not limited to): geological observations; geophysical survey results; geochemical survey results; bulk samples – size and method of treatment; metallurgical test results; bulk density, groundwater, geotechnical and rock characteristics; potential deleterious or contaminating substances.</i>	<p>In hand specimen this rock is a red colored, hard and dense granite with areas of localised fracturing. The rock shows significant iron staining and deep weathering.</p> <p>Microscopic description: In hand specimen the samples represent light colored, fairly coarse-grained granitic rock composed of visible secondary iron oxide, amphibole, opaques, clear quartz and pink to white colored feldspar. All of the specimens show moderate to strong weathering and fracturing. Allanite content is variable from trace to 2%. Rare Earths are found within the Allanite.</p> <p>Historical metallurgical testing consisted of concentrating the Allanite by both gravity and magnetic separation. The current program employs sequential high gradient magnetic separation and flotation to produce a concentrate suitable for downstream rare earth elements extraction.</p>
<i>Further work</i>	<i>The nature and scale of planned further work (e.g. tests for lateral extensions or depth extensions or large-scale step-out drilling).</i>	Further drilling is planned to increase the area of the project, and to increase confidence levels of resources. Geological mapping and surface sampling will also be performed to define and prioritize drilling targets.
	<i>Diagrams clearly highlighting the areas of possible extensions, including the main geological interpretations and future drilling areas, provided this information is not commercially sensitive.</i>	Additional drilling is planned in new exploration areas and to increase resource confidence levels.

Appendix B – Preliminary 2024 Assay Results

DHID	From	To	Sample Type	TREO	HREO	MREO	LREO	La2O3	Ce2O3	Pr6O11	Nd2O3	Sm2O3	Y2O3	Eu2O3	Gd2O3	Tb4O7	Dy2O3	Ho2O3	Er2O3	Tm2O3	Yb2O3	Lu2O3	ZrO2	Sc2O3	ThO2	UO2
HC24-RM023	2.55	5.00	Core	3900	405	1077	3495	793	1683	188	718	113	208	12	76	10	48	9	21	3	15	3	1628	18	76	6
HC24-RM023	5.00	8.00	Core	3853	369	1057	3484	790	1689	187	711	107	190	12	71	9	43	8	18	2	14	2	1648	17	79	10
HC24-RM023	8.00	11.00	Core	4796	464	1294	4332	979	2125	231	865	132	241	13	87	11	55	10	23	3	18	3	2242	19	90	8
HC24-RM023	11.00	14.00	Core	3874	454	1025	3420	787	1671	181	672	109	244	12	78	10	53	10	23	3	18	3	2067	20	68	10
HC24-RM023	14.00	17.00	Core	3952	407	1044	3545	826	1732	187	694	106	213	12	74	9	48	9	20	3	16	3	2209	18	69	8
HC24-RM023	17.00	20.00	Core	4419	485	1201	3934	905	1898	210	795	126	255	13	88	12	58	10	24	3	19	3	1932	21	79	7
HC24-RM023	20.00	23.00	Core	3915	408	1074	3507	807	1683	188	716	113	213	12	75	10	47	9	20	3	16	3	2026	18	78	9
HC24-RM023	23.00	26.00	Core	3400	376	922	3024	693	1462	163	608	98	198	12	67	9	44	8	19	2	15	2	1797	17	66	8
HC24-RM023	26.00	29.00	Core	4405	435	1197	3970	900	1935	213	798	124	224	13	84	11	51	9	21	3	16	3	2384	18	85	10
HC24-RM023	29.00	32.00	Core	3988	382	1071	3606	833	1757	194	714	108	195	13	74	9	46	8	19	2	14	2	1763	17	76	8
HC24-RM023	32.00	35.00	Core	3627	355	988	3272	758	1578	174	660	102	180	12	69	9	43	7	18	2	13	2	1675	17	70	8
HC24-RM023	35.00	38.00	Core	3835	365	1047	3470	787	1689	185	702	107	185	12	71	9	44	8	18	2	14	2	1743	16	73	8
HC24-RM023	38.00	41.00	Core	4345	447	1192	3898	890	1879	210	795	124	232	13	85	11	52	9	22	3	17	3	2236	19	82	9
HC24-RM023	41.00	44.00	Core	4669	451	1285	4218	952	2045	227	863	131	232	13	88	11	53	10	22	3	16	3	2337	19	90	9
HC24-RM023	44.00	47.00	Core	4199	435	1159	3764	849	1818	203	772	122	225	13	83	11	51	9	21	3	16	3	2202	18	83	9
HC24-RM023	47.00	50.00	Core	3522	364	960	3158	720	1529	169	642	98	189	12	68	8	43	8	18	2	14	2	2202	22	71	8
HC24-RM023	50.00	53.00	Core	3032	367	830	2665	591	1296	144	544	90	193	12	64	9	43	8	18	2	15	3	2465	26	56	7
HC24-RM023	53.00	56.00	Core	4136	430	1171	3706	823	1775	210	777	121	214	13	85	11	52	9	22	3	18	3	2141	10	83	11
HC24-RM023	56.00	59.00	Core	4017	434	1094	3583	826	1726	200	713	118	222	13	83	11	52	9	22	3	16	3	2148	13	80	11
HC24-RM023	59.00	62.00	Core	4307	466	1179	3841	873	1855	215	770	128	239	14	90	11	55	10	23	3	18	3	2263	13	85	12
HC24-RM023	62.00	65.00	Core	4130	440	1126	3690	828	1800	204	739	119	223	14	86	11	53	9	22	3	16	3	2019	10	83	10
HC24-RM023	65.00	68.00	Core	4092	449	1129	3643	829	1750	205	739	120	229	13	86	11	54	9	24	3	17	3	2242	14	84	11
HC24-RM023	68.00	71.00	Core	4108	443	1122	3665	820	1787	205	735	118	223	13	86	11	53	10	23	3	18	3	2107	14	86	14
HC24-RM023	71.00	74.00	Core	3898	384	1063	3514	787	1720	195	699	113	192	12	77	10	46	8	20	3	14	2	1878	13	86	12
HC24-RM023	74.00	77.00	Core	4398	450	1172	3948	894	1947	217	770	120	227	14	90	11	54	10	22	3	16	3	2114	10	94	12
HC24-RM023	77.00	80.00	Core	4525	500	1306	4025	884	1904	232	875	130	262	15	94	12	57	10	25	3	19	3	2242	19	95	13
HC24-RM023	80.00	83.00	Core	4035	466	1163	3569	781	1689	207	776	116	242	14	88	11	53	10	24	3	18	3	2040	20	87	12
HC24-RM023	83.00	86.00	Core	3637	403	1044	3234	714	1529	187	701	103	215	13	75	9	44	8	20	2	15	2	1783	15	82	13
HC24-RM023	86.00	89.00	Core	4036	469	1174	3567	786	1671	207	786	117	248	14	86	11	53	9	24	3	18	3	2033	17	84	10
HC24-RM023	89.00	92.00	Core	4263	496	1238	3767	834	1763	219	826	125	264	14	90	12	56	10	25	3	19	3	2269	18	87	10
HC24-RM023	92.00	95.00	Core	3782	464	1093	3318	729	1560	193	724	112	246	14	84	11	53	9	23	3	18	3	1979	17	76	10
HC24-RM023	95.00	98.00	Core	3803	449	1099	3354	744	1572	196	731	111	239	14	81	10	51	9	22	3	17	3	1871	17	75	9
HC24-RM023	98.00	101.00	Core	4125	466	1195	3659	814	1714	213	798	120	246	14	86	11	53	9	24	3	17	3	1824	17	83	11
HC24-RM023	101.00	104.00	Core	3837	441	1107	3396	752	1597	198	739	110	233	14	80	10	50	9	22	3	17	3	1749	17	80	11
HC24-RM023	104.00	107.00	Core	4034	474	1178	3560	783	1664	208	786	119	248	14	88	11	54	10	24	3	19	3	1952	17	83	12
HC24-RM023	107.00	110.00	Core	4036	460	1166	3576	778	1695	206	779	118	245	14	83	11	52	9	23	3	17	3	1817	17	81	11
HC24-RM023	110.00	113.00	Core	3676	441	1067	3235	717	1511	189	709	109	232	14	80	10	50	9	23	3	17	3	1783	14	76	12
HC24-RM023	113.00	116.00	Core	3556	422	1029	3134	677	1486	181	685	105	224	13	75	10	48	9	21	3	16	3	1770	16	76	12
HC24-RM023	116.00	120.00	Core	4065	475	1171	3590	789	1695	208	780	118	251	14	87	11	54	10	24	3	18	3	1824	17	84	14
HC24-RM024	0.00	5.00	Core	864	158	248	706	154	323	41	161	27	89	6	22	3	16	3	9	1	8	1	2053	20	18	4
HC24-RM024	5.00	8.00	Core	1542	236	445	1306	292	598	76	294	46	131	8	36	5	24	5	12	2	11	2	2364	23	26	6
HC24-RM024	8.00	11.00	Core	876	158	253	718	155	329	42	166	26	90	6	21	3	16	3	9	1	8	1	2100	19	18	5

For personal use only

For personal use only

DHID	From	To	Sample Type	TREO	HREO	MREO	LREO	La2O3	Ce2O3	Pr6O11	Nd2O3	Sm2O3	Y2O3	Eu2O3	Gd2O3	Tb4O7	Dy2O3	Ho2O3	Er2O3	Tm2O3	Yb2O3	Lu2O3	ZrO2	Sc2O3	ThO2	UO2
HC24-RM024	11.00	14.00	Core	1933	339	565	1594	324	748	94	366	62	191	12	50	7	36	7	18	2	14	2	2418	16	31	7
HC24-RM024	14.00	17.00	Core	3021	448	888	2573	547	1198	152	584	92	244	14	72	10	50	9	24	3	19	3	2323	18	53	10
HC24-RM024	17.00	20.00	Core	1637	316	491	1321	272	598	79	317	55	175	14	46	6	34	6	17	2	14	2	2458	18	27	6
HC24-RM024	20.00	23.00	Core	1827	334	536	1493	314	685	90	345	59	187	15	47	7	35	7	18	2	14	2	2121	17	33	7
HC24-RM024	23.00	26.00	Core	1269	274	380	995	202	446	60	243	44	150	17	37	5	28	5	15	2	13	2	1999	17	17	5
HC24-RM024	26.00	29.00	Core	1699	315	520	1384	285	618	83	341	57	172	17	46	6	33	6	17	2	14	2	2614	34	23	7
HC24-RM024	29.00	32.00	Core	1585	322	500	1263	243	560	77	325	58	177	16	48	6	34	6	17	2	14	2	3066	55	15	5
HC24-RM024	32.00	35.00	Core	1763	359	537	1404	283	629	85	346	61	199	16	51	7	38	7	19	3	16	3	3053	33	23	7
HC24-RM024	35.00	38.00	Core	1873	360	547	1513	304	710	85	352	62	195	16	51	8	40	7	20	3	17	3	3188	24	27	7
HC24-RM024	38.00	41.00	Core	1752	341	521	1411	278	657	79	335	62	187	13	49	7	38	7	19	2	16	3	2945	47	21	6
HC24-RM024	41.00	44.00	Core	1954	295	541	1659	364	792	90	353	60	164	10	44	6	32	6	16	2	13	2	2499	18	32	5
HC24-RM024	44.00	47.00	Core	2636	404	746	2232	475	1067	124	484	82	219	13	62	9	47	8	22	3	18	3	3053	22	40	8
HC24-RM024	47.00	50.00	Core	2701	399	761	2302	493	1103	127	497	82	213	16	62	9	46	8	22	3	17	3	3026	15	39	6
HC24-RM024	50.00	53.00	Core	2461	446	716	2015	415	946	113	458	83	244	14	67	10	52	9	25	3	19	3	3363	17	36	7
HC24-RM024	53.00	56.00	Core	2440	371	688	2069	440	993	113	448	75	201	12	58	8	44	8	20	3	15	2	2175	18	37	5
HC24-RM024	56.00	59.00	Core	2940	414	831	2526	541	1211	138	548	88	222	14	67	9	48	9	22	3	17	3	3107	17	43	7
HC24-RM024	59.00	62.00	Core	2510	440	730	2070	429	973	116	469	83	239	14	66	10	52	9	25	3	19	3	3418	18	36	7
HC24-RM024	62.00	65.00	Core	2471	403	714	2068	435	974	116	465	78	217	14	63	9	46	9	21	3	18	3	3782	17	36	7
HC24-RM024	65.00	67.54	Core	2022	382	601	1640	323	768	92	385	72	209	14	57	8	44	8	20	3	16	3	2904	16	30	7
HC24-RM024	67.54	67.85	Core	1282	243	387	1039	206	479	59	247	48	133	8	36	5	28	5	13	2	11	2	1301	15	35	10
HC24-RM024	67.85	71.00	Core	1837	293	530	1544	323	730	86	345	60	159	11	45	6	33	6	16	2	13	2	2877	17	27	6
HC24-RM024	71.00	74.00	Core	1766	251	504	1515	320	724	82	334	55	137	9	39	5	28	5	13	2	11	2	2458	20	27	4
HC24-RM024	74.00	77.00	Core	1513	238	427	1275	274	606	70	279	46	130	8	35	5	27	5	13	2	11	2	2877	23	25	5
HC24-RM024	77.00	80.00	Core	2471	286	672	2185	488	1064	117	448	68	155	9	46	6	33	6	15	2	12	2	2621	18	43	6
HC24-RM024	80.00	83.00	Core	2170	285	601	1885	412	910	103	397	63	155	9	46	6	32	6	15	2	12	2	2769	20	35	5
HC24-RM024	83.00	85.64	Core	2830	320	799	2510	550	1205	138	538	79	171	10	55	7	37	6	17	2	13	2	2296	16	51	9
HC24-RM024	85.64	89.54	Core	2383	368	690	2015	418	957	110	455	75	201	11	56	8	42	8	20	3	16	3	3391	36	29	7
HC24-RM024	89.54	90.87	Core	2343	388	671	1955	400	935	107	439	74	217	11	57	8	43	8	21	3	17	3	3566	41	30	7
HC24-RM024	90.87	92.10	Core	2275	243	614	2032	454	997	108	412	61	128	8	41	5	28	5	13	2	11	2	2303	15	45	7
HC24-RM024	92.10	92.49	Core	658	130	175	528	119	249	29	111	20	76	4	16	2	13	3	7	1	7	1	802	14	43	13
HC24-RM024	92.49	93.82	Core	1177	201	333	976	211	459	54	215	37	109	7	29	4	23	4	12	1	10	2	2236	21	19	4
HC24-RM024	93.82	95.00	Core	1309	213	378	1096	233	512	61	250	40	117	6	32	4	23	4	12	2	11	2	3769	35	24	5
HC24-RM024	95.00	98.00	Core	1390	201	384	1189	260	571	64	253	41	110	7	29	4	22	4	11	2	10	2	2891	22	25	4
HC24-RM024	98.00	98.40	Core	1551	250	418	1301	289	626	69	271	46	143	7	33	5	27	5	14	2	12	2	2033	22	30	7
HC24-RM024	98.40	101.00	Core	1440	204	398	1236	270	595	67	261	43	113	7	30	4	23	4	10	2	9	2	2418	21	26	4
HC24-RM024	101.00	102.90	Core	2700	306	745	2394	536	1155	130	500	73	163	10	52	7	35	6	16	2	13	2	2621	17	43	5
HC24-RM024	102.90	104.40	Core	3289	379	949	2910	620	1394	161	637	98	197	13	68	9	44	8	20	3	15	2	2594	15	52	6
HC24-RM024	104.40	106.80	Core	1172	165	327	1007	223	478	56	216	34	91	7	24	3	18	3	9	1	8	1	2425	19	21	4
HC24-RM024	106.80	107.39	Core	986	190	284	796	167	370	45	182	32	107	7	26	4	21	4	10	1	9	1	2134	20	15	3
HC24-RM024	107.39	107.91	Core	775	134	220	641	137	301	36	143	24	73	6	19	3	14	3	7	1	7	1	2114	19	14	3
HC24-RM024	107.91	108.45	Core	658	128	188	530	111	248	31	117	23	68	7	18	3	14	3	7	1	6	1	2087	21	11	3

DHID	From	To	Sample Type	TREO	HREO	MREO	LREO	La2O3	Ce2O3	Pr6O11	Nd2O3	Sm2O3	Y2O3	Eu2O3	Gd2O3	Tb4O7	Dy2O3	Ho2O3	Er2O3	Tm2O3	Yb2O3	Lu2O3	ZrO2	Sc2O3	ThO2	UO2
HC24-RM024	108.45	110.66	Core	963	131	260	832	181	409	46	167	29	69	6	20	3	15	3	7	1	6	1	2344	21	17	3
HC24-RM024	110.66	112.84	Core	1475	202	387	1273	277	636	69	248	43	107	8	32	4	23	4	12	1	9	2	2492	22	26	4
HC24-RM024	112.84	116.00	Core	1773	223	470	1550	338	773	84	303	52	115	9	37	5	26	5	12	2	10	2	2783	20	29	4
HC24-RM024	116.00	117.85	Core	1363	184	368	1179	256	579	65	237	42	98	8	30	4	20	4	10	1	8	1	2695	22	23	4
HC24-RM024	117.85	118.27	Core	1471	264	395	1207	253	595	67	245	47	145	8	37	6	30	6	15	2	13	2	2594	31	26	7
HC24-RM024	118.27	120.07	Core	825	138	230	687	147	328	39	146	27	74	6	20	3	15	3	8	1	7	1	2263	22	16	4
HC24-RM024	120.07	120.60	Core	445	91	110	354	82	173	19	66	14	55	1	10	2	9	2	5	1	5	1	292	13	68	24
HC24-RM024	120.60	121.29	Core	687	127	195	560	117	265	32	123	23	68	6	18	3	14	3	7	1	6	1	2283	21	13	3
HC24-RM024	121.29	121.44	Core	382	92	98	290	65	139	16	58	12	54	1	11	2	10	2	5	1	5	1	490	13	55	20
HC24-RM024	121.44	123.53	Core	997	142	268	855	185	421	47	172	30	74	7	22	3	16	3	8	1	7	1	2290	19	17	3
HC24-RM024	123.53	123.62	Core	940	208	267	732	147	346	42	163	34	114	7	28	4	24	5	12	2	10	2	1763	17	34	15
HC24-RM024	123.62	125.35	Core	1366	232	387	1134	229	550	64	245	46	121	12	36	5	27	5	12	2	10	2	2661	20	21	4
HC24-RM024	125.35	128.00	Core	1255	293	374	962	177	452	56	226	51	157	13	43	6	35	6	16	2	13	2	2411	19	18	5
HC24-RM024	128.00	131.00	Core	1707	312	489	1395	272	677	79	306	61	164	16	48	7	36	7	17	2	13	2	3458	17	25	5
HC24-RM024	131.00	134.00	Core	1520	318	453	1202	224	568	70	281	59	168	16	48	7	36	7	17	2	15	2	3255	16	22	5
HC24-RM024	134.00	136.70	Core	1432	343	433	1089	198	506	64	261	60	179	15	51	8	40	8	20	3	16	3	3093	18	19	5
HC24-RM024	136.70	137.13	Core	2106	383	606	1723	339	833	97	377	77	201	15	59	9	46	9	21	3	17	3	3026	21	28	5
HC24-RM024	137.13	139.00	Core	1592	377	499	1215	205	564	74	303	69	199	15	58	8	45	8	21	3	17	3	6727	28	22	6
HC24-RM024	139.00	140.67	Core	1306	339	419	967	157	439	58	253	60	178	14	52	8	40	8	19	2	15	3	6119	28	16	6
HC24-RM024	140.67	140.85	Core	708	155	216	553	105	253	33	133	29	82	7	23	3	18	3	9	1	8	1	1709	18	17	10
HC24-RM024	140.85	143.69	Core	1445	317	445	1128	202	525	66	276	59	164	15	49	7	37	7	18	2	15	3	4944	25	19	5
HC24-RM024	143.69	144.90	Core	327	80	82	247	53	121	14	49	10	47	2	9	1	8	2	5	1	4	1	349	11	69	22
HC24-RM024	144.90	148.00	Core	1199	307	386	892	147	402	55	233	55	161	14	46	7	36	7	17	2	14	3	4498	29	16	7
HC24-RM024	148.00	151.00	Core	1376	314	429	1062	186	490	64	264	58	165	14	48	7	36	7	17	2	15	3	5147	31	17	4
HC24-RM024	151.00	152.90	Core	1613	344	497	1269	225	596	75	307	66	178	15	53	8	41	8	19	3	16	3	4133	30	18	5
HC24-RM024	152.90	153.69	Core	2202	411	622	1791	359	866	101	388	77	224	14	60	9	47	9	23	3	19	3	4417	33	23	7
HC24-RM024	153.69	154.93	Core	1785	368	535	1417	263	671	82	331	70	194	15	55	8	44	8	21	3	17	3	4701	32	21	5
HC24-RM024	154.93	155.91	Core	1863	439	556	1424	265	665	82	336	76	239	13	64	10	52	10	25	3	20	3	2972	31	24	7
HC24-RM024	155.91	157.37	Core	1311	228	341	1083	236	537	58	211	41	125	6	33	5	26	5	13	2	11	2	1326	21	48	11
HC24-RM024	157.37	159.50	Core	2297	369	663	1928	386	929	111	423	79	197	13	58	8	42	8	20	3	17	3	4944	27	41	8
HC24-RM024	159.50	160.36	Core	2342	508	673	1834	361	872	104	408	89	278	14	73	11	61	11	29	4	23	4	3485	33	33	8
HC24-RM024	160.36	160.58	Core	240	69	62	171	44	73	9	36	9	39	3	8	1	7	1	4	1	4	1	232	11	18	15
HC24-RM024	160.58	161.43	Core	1401	324	446	1077	194	482	63	279	59	175	12	48	7	38	7	17	2	15	3	4350	25	17	5
HC24-RM024	161.43	161.59	Core	254	81	71	173	35	76	10	42	10	46	3	9	1	8	2	5	1	5	1	232	13	33	18
HC24-RM024	161.59	161.97	Core	2273	235	605	2038	477	988	108	404	61	121	12	39	5	27	5	12	2	10	2	839	25	48	5
HC24-RM024	161.97	162.69	Core	1221	239	350	982	207	458	54	219	44	130	9	35	5	28	5	13	2	10	2	1132	22	24	6
HC24-RM024	162.69	164.00	Core	1100	255	352	845	151	377	49	221	47	134	12	39	5	30	6	13	2	12	2	1898	28	12	3
HC24-RM024	164.00	167.00	Core	1588	374	519	1214	209	538	72	327	68	199	14	58	8	44	8	20	3	17	3	5133	26	17	5
HC24-RM024	167.00	168.01	Core	1419	344	457	1075	189	477	63	285	61	184	13	53	8	40	7	18	2	16	3	4255	31	15	3
HC24-RM024	168.01	168.97	Core	1540	335	479	1205	225	547	69	301	63	181	12	51	7	39	7	18	2	15	3	4079	27	20	4
HC24-RM024	168.97	171.36	Core	1677	316	520	1361	262	623	78	334	64	168	13	50	7	37	7	16	2	14	2	3580	28	21	4



DHID	From	To	Sample Type	TREO	HREO	MREO	LREO	La2O3	Ce2O3	Pr6O11	Nd2O3	Sm2O3	Y2O3	Eu2O3	Gd2O3	Tb4O7	Dy2O3	Ho2O3	Er2O3	Tm2O3	Yb2O3	Lu2O3	ZrO2	Sc2O3	ThO2	UO2
HC24-RM024	171.36	172.80	Core	2011	360	568	1651	353	780	90	359	69	201	10	53	8	42	8	19	2	15	2	2161	26	28	6
HC24-RM024	172.80	173.00	Core	1628	347	511	1281	239	579	74	324	65	185	13	54	7	41	7	19	2	16	3	3836	30	18	4
HC24-RM024	173.00	176.00	Core	1365	273	438	1092	200	491	64	282	55	141	14	44	6	31	6	14	2	13	2	3161	32	15	4
HC24-RM024	176.00	179.00	Core	1290	273	416	1017	183	456	59	266	53	141	15	42	6	32	6	14	2	13	2	3553	29	11	4
HC24-RM024	179.00	182.00	Core	1015	273	341	742	121	317	45	211	48	145	14	41	6	31	6	14	2	12	2	3242	28	9	4
HC24-RM024	182.00	185.00	Core	1153	269	366	884	159	396	52	229	48	140	15	41	6	31	6	14	2	12	2	3107	30	13	4
HC24-RM024	185.00	188.00	Core	1200	252	375	948	178	429	55	238	48	130	16	39	5	29	5	13	2	11	2	1911	29	14	3
HC24-RM024	188.00	191.00	Core	1202	245	375	957	179	436	55	238	49	126	15	38	5	28	5	13	2	11	2	2330	26	15	3
HC24-RM024	191.00	191.26	Core	1212	256	377	956	181	434	54	237	50	134	13	39	6	30	6	13	2	11	2	2128	26	19	4
HC24-RM024	191.26	191.41	Core	1391	276	421	1115	223	510	63	266	53	144	14	42	6	33	6	15	2	12	2	2161	26	21	5
HC24-RM024	191.41	194.00	Core	1330	267	402	1063	210	488	60	253	52	138	15	41	6	31	6	14	2	12	2	2425	26	17	4
HC24-RM024	194.00	197.00	Core	1206	258	372	948	178	434	54	234	48	133	14	39	6	30	6	14	2	12	2	2904	25	16	4
HC24-RM024	197.00	197.33	Core	1242	257	359	985	204	457	54	225	45	137	12	37	5	30	6	14	2	12	2	2209	22	21	5
HC24-RM024	197.33	200.00	Core	1567	338	497	1229	223	555	72	315	64	180	15	51	7	39	7	18	2	16	3	4417	32	16	5
HC24-RM024	200.00	203.00	Core	1226	305	393	921	159	410	54	244	54	163	13	45	6	35	7	16	2	15	3	3958	28	12	4
HC24-RM024	203.00	206.00	Core	1020	239	328	781	142	345	46	204	44	123	13	38	5	29	5	12	2	10	2	2742	22	11	3
HC24-RM024	206.00	209.00	Core	1344	330	448	1014	171	443	61	275	64	173	13	54	8	40	7	17	2	14	2	3580	28	14	3
HC24-RM024	209.00	211.77	Core	3231	391	926	2840	644	1327	154	611	104	199	11	74	9	48	8	20	3	16	3	3674	28	53	6
HC24-RM024	211.77	215.00	Core	892	151	266	741	158	337	42	173	31	76	11	25	3	17	3	8	1	6	1	1682	16	14	3
HC24-RM024	215.00	218.00	Core	1625	212	461	1413	306	676	76	304	51	106	11	38	5	25	4	11	1	9	2	2526	26	26	4
HC24-RM024	218.00	219.51	Core	1023	178	307	845	173	389	47	199	37	91	11	29	4	20	4	9	1	8	1	2729	21	18	4
HC24-RM024	219.51	219.86	Core	687	134	178	553	131	262	29	110	21	77	3	17	3	15	3	7	1	7	1	1052	16	52	14
HC24-RM024	219.86	222.00	Core	833	172	261	661	130	294	38	165	34	90	8	27	4	20	4	9	1	8	1	2587	26	12	4
HC24-RM024	222.00	225.00	Core	1501	272	466	1229	237	564	70	300	58	142	10	46	6	32	6	14	2	12	2	3701	41	18	4
HC24-RM024	225.00	226.42	Core	1781	328	566	1453	259	673	84	366	71	173	9	58	7	38	7	17	2	14	3	5241	44	24	4
HC24-RM024	226.42	228.00	Core	1249	241	336	1008	212	490	55	214	37	139	6	33	5	25	5	13	2	11	2	1506	30	28	8
HC24-RM024	228.00	230.14	Core	4067	460	1192	3607	760	1720	199	802	126	237	11	93	11	54	10	22	3	16	3	3674	27	66	7
HC24-RM024	230.14	231.24	Core	5070	338	1336	4732	1115	2328	250	918	121	167	13	74	8	39	7	15	2	11	2	1918	23	91	7
HC24-RM024	231.24	234.00	Core	3357	420	980	2937	633	1382	163	653	106	221	10	80	10	48	9	20	3	16	3	4890	26	56	9
HC24-RM024	234.00	237.00	Core	3387	443	1023	2944	596	1388	164	681	115	228	11	90	11	52	9	21	3	15	3	4917	27	55	7
HC24-RM024	237.00	237.86	Core	8317	744	2468	7573	1618	3599	434	1680	242	367	15	172	20	92	16	34	4	21	3	3066	22	147	12
HC24-RM024	237.86	240.00	Core	4182	219	1122	3963	924	1947	212	780	100	99	11	57	6	24	4	9	1	7	1	1358	25	87	6
HC24-RM024	240.00	242.72	Core	3346	187	857	3159	772	1554	166	595	72	92	10	41	4	20	3	8	1	7	1	1472	21	67	5
HC24-RM024	242.72	243.81	Core	529	132	163	397	73	176	23	104	21	71	10	18	2	13	3	7	1	6	1	2100	26	12	5
HC24-RM024	243.81	245.65	Core	2190	174	561	2016	482	995	105	384	50	90	10	31	4	18	3	8	1	8	1	2303	22	46	8
HC24-RM024	245.65	246.15	Core	711	149	210	562	113	257	32	134	26	81	10	21	3	15	3	7	1	7	1	2100	31	15	7
HC24-RM024	246.15	249.00	Core	727	179	225	548	101	243	33	142	29	98	10	25	3	18	4	10	1	9	1	2931	37	11	5
HC24-RM024	249.00	252.00	Core	741	158	222	583	115	265	34	143	26	87	9	22	3	16	3	8	1	8	1	2431	33	12	4
HC24-RM024	252.00	253.21	Core	756	171	232	585	110	264	34	148	29	95	9	23	3	18	4	9	1	8	1	2479	35	13	5
HC24-RM024	253.21	253.61	Core	563	140	170	423	78	192	25	107	21	78	7	18	3	14	3	8	1	7	1	1844	26	22	9
HC24-RM024	253.61	256.00	Core	827	188	256	639	117	289	38	164	31	104	9	27	4	19	4	10	1	9	1	2850	37	12	4

For personal use only

DHID	From	To	Sample Type	TREO	HREO	MREO	LREO	La2O3	Ce2O3	Pr6O11	Nd2O3	Sm2O3	Y2O3	Eu2O3	Gd2O3	Tb4O7	Dy2O3	Ho2O3	Er2O3	Tm2O3	Yb2O3	Lu2O3	ZrO2	Sc2O3	ThO2	UO2
HC24-RM024	256.00	259.00	Core	1058	184	294	874	185	418	48	190	33	99	10	27	4	19	4	10	1	9	1	2958	36	16	5
HC24-RM024	259.00	262.00	Core	813	179	243	634	123	289	37	155	30	98	9	25	3	18	4	10	1	9	2	2958	40	14	6
HC24-RM024	262.00	264.60	Core	1057	200	301	857	173	407	47	195	35	110	10	27	4	20	4	11	2	10	2	3269	43	17	5
HC24-RM024	264.60	264.92	Core	1039	196	286	843	177	405	46	181	34	112	6	27	4	21	4	10	2	9	1	1358	24	40	13
HC24-RM024	264.92	266.00	Core	1179	260	347	919	175	429	52	220	43	146	10	36	5	27	5	14	2	13	2	2546	36	20	6
HC24-RM024	266.00	269.00	Core	1013	195	296	818	164	382	47	190	35	106	10	28	4	20	4	10	1	10	2	2837	36	16	5
HC24-RM024	269.00	269.86	Core	912	182	267	730	147	338	42	172	31	99	10	26	3	19	4	9	1	9	2	2715	34	15	4
HC24-RM024	269.86	272.00	Core	919	186	267	733	146	344	41	171	31	101	10	25	4	20	4	10	1	9	2	2621	35	16	6
HC24-RM024	272.00	275.00	Core	1055	210	310	845	162	399	48	201	35	116	10	29	4	22	4	11	2	10	2	2958	42	15	5
HC24-RM024	275.00	275.50	Core	845	200	261	645	117	292	38	166	32	111	8	28	4	21	4	11	1	10	2	2648	39	19	9
HC24-RM024	275.50	275.77	Core	1192	294	371	898	159	405	53	233	48	167	10	41	6	31	6	15	2	14	2	2945	47	22	9
HC24-RM024	275.77	277.80	Core	1210	312	382	898	149	407	53	239	50	174	10	45	6	34	7	17	2	15	2	3282	47	12	4
HC24-RM024	277.80	281.00	Core	961	193	284	768	151	357	43	183	34	105	11	27	4	20	4	10	1	9	2	3066	37	13	4
HC24-RM024	281.00	284.00	Core	926	175	265	751	154	353	42	172	30	96	10	24	3	18	4	9	1	9	1	2810	39	14	4
HC24-RM024	284.00	287.00	Core	951	181	270	770	156	365	43	175	31	99	10	26	3	18	4	10	1	9	1	2810	38	15	4
HC24-RM024	287.00	290.00	Core	910	164	261	746	154	351	41	170	30	88	10	24	3	17	3	9	1	8	1	2661	34	14	3
HC24-RM024	290.00	293.00	Core	903	183	267	720	147	329	41	173	30	99	10	25	4	19	4	10	2	9	1	2783	37	13	4
HC24-RM024	293.00	294.88	Core	749	167	233	582	110	260	34	149	29	90	10	24	3	18	3	9	1	8	1	2837	27	13	5
HC24-RM024	294.88	295.06	Core	365	80	93	285	65	136	15	58	11	47	2	9	1	8	2	5	1	4	1	508	12	56	14
HC24-RM024	295.06	295.27	Core	825	157	235	668	141	311	37	153	26	88	6	22	3	16	3	9	1	8	1	2229	26	50	26
HC24-RM024	295.27	295.46	Core	1049	187	310	862	177	399	49	202	35	101	9	28	4	20	4	10	1	9	1	3053	36	24	6
HC24-RM024	295.46	299.00	Core	954	197	303	757	141	340	44	195	37	102	11	31	4	23	4	10	1	9	2	3647	44	13	3
HC24-RM024	299.00	301.76	Core	1474	251	439	1223	246	572	69	286	50	133	10	40	6	28	5	13	2	12	2	3147	44	20	6
HC24-RM024	301.76	302.00	Core	1650	233	485	1417	285	678	79	322	53	122	9	39	5	26	5	12	2	11	2	3053	26	33	7
HC24-RM025	10.06	11.00	Core	871	146	239	725	164	340	39	155	27	78	10	20	3	15	3	8	1	7	1	2019	28	21	6
HC24-RM025	11.00	14.00	Core	844	155	238	689	151	319	38	154	27	83	10	22	3	16	3	8	1	8	1	1999	30	20	7
HC24-RM025	14.00	17.00	Core	866	162	245	704	151	328	39	158	28	88	10	22	3	17	3	9	1	8	1	2276	31	19	6
HC24-RM025	17.00	20.00	Core	905	183	260	722	150	333	41	169	29	102	11	24	3	18	4	10	1	9	1	2398	33	17	5
HC24-RM025	20.00	23.00	Core	860	158	234	702	158	329	39	150	26	87	10	20	3	16	3	9	1	8	1	2013	30	20	6
HC24-RM025	23.00	25.24	Core	1007	181	273	826	187	387	44	177	31	100	11	24	3	18	4	10	1	9	1	2519	32	22	7
HC24-RM025	25.24	25.98	Core	808	105	178	703	183	354	36	112	18	63	2	12	2	10	2	6	1	6	1	698	10	94	18
HC24-RM025	25.98	29.00	Core	883	157	231	726	167	346	39	149	25	90	8	19	3	15	3	9	1	8	1	1776	23	40	9
HC24-RM025	29.00	31.80	Core	893	180	249	713	152	333	40	159	29	101	10	23	3	18	4	10	1	9	1	2175	31	18	5
HC24-RM025	31.80	32.43	Core	869	197	254	672	134	308	39	162	29	110	10	25	4	20	4	11	2	10	1	1979	35	16	7
HC24-RM025	32.43	32.68	Core	670	145	189	525	110	242	29	123	21	83	7	18	3	13	3	8	1	8	1	1817	25	75	20
HC24-RM025	32.68	35.20	Core	1161	249	356	912	171	415	54	229	43	138	9	36	5	25	5	14	2	13	2	4377	51	14	6
HC24-RM025	35.20	35.83	Core	452	97	124	355	71	171	20	77	16	57	2	11	2	9	2	6	1	6	1	663	13	102	16
HC24-RM025	35.83	38.00	Core	1101	235	328	866	169	397	50	212	38	133	10	31	4	24	4	13	2	12	2	3958	44	18	7
HC24-RM025	38.00	41.00	Core	997	159	259	838	199	399	44	169	27	88	9	22	3	16	3	8	1	8	1	2263	31	19	5
HC24-RM025	41.00	42.77	Core	912	177	254	735	158	344	41	163	29	98	10	23	3	18	4	10	1	9	1	2573	32	14	5
HC24-RM025	42.77	43.00	Core	584	116	150	468	106	227	26	92	17	64	5	15	2	13	2	7	1	6	1	1293	19	29	8

For personal use only

DHID	From	To	Sample Type	TREO	HREO	MREO	LREO	La2O3	Ce2O3	Pr6O11	Nd2O3	Sm2O3	Y2O3	Eu2O3	Gd2O3	Tb4O7	Dy2O3	Ho2O3	Er2O3	Tm2O3	Yb2O3	Lu2O3	ZrO2	Sc2O3	ThO2	UO2
HC24-RM025	43.00	44.00	Core	965	196	262	769	167	365	45	162	30	109	10	25	4	21	4	11	1	10	1	2756	33	14	4
HC24-RM025	44.00	47.00	Core	894	206	265	688	130	317	40	169	32	117	9	26	4	20	4	11	2	11	2	2756	34	11	7
HC24-RM025	47.00	48.04	Core	976	230	289	746	141	343	44	182	36	131	10	28	4	23	5	13	2	12	2	3445	39	11	9
HC24-RM025	48.04	48.29	Core	169	49	45	120	25	56	7	26	6	30	1	5	1	5	1	3	0	3	0	319	10	43	14
HC24-RM025	48.29	50.00	Core	1040	241	306	799	154	367	47	194	37	138	10	31	4	24	5	13	2	12	2	3282	37	13	7
HC24-RM025	50.00	53.00	Core	990	229	290	761	150	349	44	185	33	130	10	28	4	24	5	13	2	11	2	2594	34	14	7
HC24-RM025	53.00	56.00	Core	1061	239	313	822	163	376	47	198	38	134	10	31	5	25	5	13	2	12	2	2958	36	14	6
HC24-RM025	56.00	59.00	Core	935	214	277	721	141	329	42	175	34	121	10	27	4	22	4	12	2	10	2	2317	31	14	6
HC24-RM025	59.00	62.00	Core	903	197	256	706	148	326	40	162	30	112	10	24	4	20	4	11	1	9	2	2823	29	16	6
HC24-RM025	62.00	63.95	Core	847	170	236	677	145	316	38	150	28	98	9	21	3	17	3	9	1	8	1	2033	25	21	7
HC24-RM025	63.95	64.12	Core	741	148	204	593	131	276	33	128	25	84	8	18	3	15	3	8	1	7	1	1695	25	16	5
HC24-RM025	64.12	65.00	Core	760	154	213	606	131	281	34	134	26	87	9	19	3	16	3	8	1	7	1	1783	23	21	7
HC24-RM025	65.00	67.65	Core	775	162	219	613	130	283	35	138	27	93	9	19	3	16	3	9	1	8	1	2560	30	14	5
HC24-RM025	67.65	67.88	Core	1102	168	278	934	226	451	49	178	30	96	8	21	3	18	3	9	1	8	1	1601	17	31	10
HC24-RM025	67.88	71.00	Core	896	179	257	717	152	330	40	165	30	103	9	22	3	19	3	9	1	9	1	3107	30	16	6
HC24-RM025	71.00	74.00	Core	861	173	243	688	148	318	38	155	29	99	10	21	3	18	3	9	1	8	1	2560	31	18	6
HC24-RM025	74.00	77.00	Core	903	206	265	697	140	318	41	164	34	118	10	25	4	22	4	10	2	10	1	3053	30	15	5
HC24-RM025	77.00	80.00	Core	1182	278	367	904	165	407	55	230	47	160	9	36	5	30	5	15	2	14	2	5011	49	14	5
HC24-RM025	80.00	83.00	Core	857	186	253	671	135	306	39	159	32	104	10	25	3	20	4	10	1	8	1	3309	33	18	6
HC24-RM025	83.00	86.00	Core	851	161	246	690	148	317	39	157	29	89	10	21	3	18	3	8	1	7	1	2796	23	20	6
HC24-RM025	86.00	89.00	Core	730	151	219	579	116	263	33	140	27	83	10	20	3	16	3	7	1	7	1	2769	25	15	6
HC24-RM025	89.00	92.00	Core	622	130	188	492	98	222	28	121	23	71	9	18	2	14	2	6	1	6	1	2404	28	13	6
HC24-RM025	92.00	95.00	Core	757	151	223	606	124	278	35	143	26	82	10	20	3	16	3	8	1	7	1	2783	24	17	6
HC24-RM025	95.00	97.70	Core	721	150	218	571	114	258	33	138	28	82	9	20	3	16	3	8	1	7	1	2621	30	18	9
HC24-RM025	97.70	98.10	Core	533	81	131	452	110	222	24	82	14	48	2	9	2	9	1	4	1	4	1	405	5	70	12
HC24-RM025	98.10	101.00	Core	780	153	222	627	134	290	36	141	26	86	9	19	3	16	3	8	1	7	1	1824	26	18	7
HC24-RM027	7.50	11.00	Core	1144	173	317	971	212	464	54	206	35	98	7	24	3	19	3	9	1	8	1	2661	14	23	4
HC24-RM027	11.00	14.00	Core	1725	325	481	1400	267	695	76	303	59	187	11	43	7	36	6	17	2	14	2	2641	36	23	6
HC24-RM027	14.00	16.00	Core	1745	390	528	1355	235	645	77	329	69	225	10	53	8	45	8	20	3	16	2	2729	61	16	5
HC24-RM027	16.00	19.54	Core	1982	374	565	1608	307	786	88	357	70	215	11	51	8	42	7	20	3	15	2	2155	23	27	9
HC24-RM027	19.54	23.00	Core	1317	314	402	1003	189	453	59	251	51	184	8	40	6	35	6	17	2	14	2	2661	49	12	6
HC24-RM027	23.00	26.08	Core	1756	340	504	1416	264	693	77	320	62	194	10	47	7	38	7	18	2	15	2	2783	50	19	5
HC24-RM027	26.08	26.24	Core	2029	340	561	1689	332	843	92	355	67	192	11	48	7	40	7	18	2	13	2	1587	5	32	13
HC24-RM027	26.24	26.37	Core	988	204	278	784	166	367	45	172	34	119	5	26	4	23	4	11	2	9	1	865	5	46	9
HC24-RM027	26.37	29.00	Core	2160	355	600	1805	357	895	97	385	71	204	10	50	7	40	7	18	2	15	2	2026	32	34	7
HC24-RM027	29.00	31.65	Core	2721	354	747	2367	482	1188	125	488	84	193	12	56	8	42	7	18	2	14	2	1938	7	38	7
HC24-RM027	31.65	32.00	Core	3418	454	936	2964	643	1449	156	609	107	250	11	72	10	54	9	24	3	18	3	1702	6	48	8
HC24-RM027	32.00	35.00	Core	2103	357	594	1746	344	859	94	377	72	204	6	51	8	43	8	19	2	14	2	1466	6	37	9
HC24-RM027	35.00	38.00	Core	1125	313	332	812	154	369	48	197	44	187	3	38	6	37	7	18	2	13	2	901	4	22	6
HC24-RM027	38.00	41.00	Core	694	181	201	513	103	233	30	121	26	110	3	21	3	21	4	10	1	7	1	461	3	16	4
HC24-RM027	41.00	44.00	Core	617	195	179	422	80	189	25	103	25	120	1	22	4	22	4	11	2	8	1	588	3	15	4

For personal use only

DHID	From	To	Sample Type	TREO	HREO	MREO	LREO	La2O3	Ce2O3	Pr6O11	Nd2O3	Sm2O3	Y2O3	Eu2O3	Gd2O3	Tb4O7	Dy2O3	Ho2O3	Er2O3	Tm2O3	Yb2O3	Lu2O3	ZrO2	Sc2O3	ThO2	UO2
HC24-RM027	44.00	47.00	Core	914	238	258	676	135	313	39	159	30	140	5	28	4	26	5	15	2	11	2	2100	22	18	6
HC24-RM027	47.00	48.70	Core	857	251	247	606	116	278	36	145	31	147	2	31	5	30	6	16	2	11	1	887	11	18	7
HC24-RM027	48.70	50.00	Core	947	270	273	677	131	310	39	160	37	157	3	34	5	32	7	17	2	11	2	770	10	19	6
HC24-RM027	50.00	53.00	Core	1351	329	390	1022	203	474	59	238	48	189	5	44	6	39	8	20	2	14	2	1594	15	24	8
HC24-RM027	53.00	56.50	Core	1188	276	349	912	182	419	53	216	42	157	6	37	6	32	6	16	2	12	2	2073	24	16	6
HC24-RM027	56.50	57.40	Core	882	131	233	751	174	362	40	150	25	74	2	19	3	15	3	7	1	6	1	335	16	19	2
HC24-RM027	57.40	59.72	Core	1569	368	458	1201	233	558	69	285	56	211	8	49	7	41	8	21	3	17	3	3053	38	21	7
HC24-RM027	59.72	62.92	Core	894	207	244	687	147	322	39	150	29	121	5	26	4	22	4	12	2	10	1	1206	20	33	7
HC24-RM027	62.92	64.13	Core	1611	342	465	1269	250	597	72	295	55	196	10	47	6	37	7	19	3	15	2	3147	62	16	5
HC24-RM027	64.13	65.00	Core	1115	204	311	911	198	429	51	198	35	114	8	29	4	23	4	11	1	9	1	2019	17	19	5
HC24-RM027	65.00	68.00	Core	248	73	66	175	40	78	9	39	9	41	6	9	1	8	1	4	0	3	0	1526	10	3	2
HC24-RM027	68.00	68.90	Core	331	81	88	250	56	115	13	55	11	45	6	10	1	8	2	4	1	3	1	1385	10	9	4
HC24-RM027	68.90	70.04	Core	357	74	93	283	66	133	15	58	11	41	5	11	1	8	1	4	0	3	0	1181	10	10	3
HC24-RM027	70.04	71.00	Core	189	63	55	126	25	54	7	32	8	36	4	9	1	7	1	3	0	2	0	1031	11	2	1
HC24-RM027	71.00	74.00	Core	192	67	56	125	24	53	7	33	8	38	4	9	1	7	1	4	0	3	0	983	15	3	2
HC24-RM027	74.00	77.00	Core	405	116	124	289	54	125	17	76	17	64	6	15	2	12	2	7	1	6	1	2080	22	5	3
HC24-RM027	77.00	80.00	Core	323	84	101	239	46	103	14	63	13	43	5	11	2	9	2	5	1	5	1	1634	22	5	2
HC24-RM027	80.00	80.94	Core	316	105	95	211	38	91	12	57	13	59	5	12	2	11	2	6	1	6	1	1688	24	5	3
HC24-RM027	80.94	81.23	Core	370	129	108	241	44	105	14	62	16	73	6	14	2	14	3	8	1	7	1	1279	23	16	7
HC24-RM027	81.23	83.00	Core	237	80	73	157	28	65	9	44	11	44	5	10	1	8	2	4	1	4	1	1641	25	3	2
HC24-RM027	83.00	86.00	Core	568	134	162	434	90	200	24	100	20	73	6	18	3	15	3	7	1	7	1	1770	36	9	3
HC24-RM027	86.00	87.05	Core	457	113	132	344	71	155	19	82	17	63	6	15	2	12	2	6	1	5	1	1857	23	7	3
HC24-RM027	87.05	87.29	Core	335	100	98	235	47	103	13	59	13	56	5	12	2	11	2	5	1	5	1	1688	21	7	4
HC24-RM027	87.29	89.00	Core	450	104	123	346	75	161	19	76	15	58	5	13	2	11	2	6	1	5	1	1560	30	14	4
HC24-RM027	89.00	92.00	Core	926	152	253	774	170	371	43	161	29	84	5	22	3	17	3	9	1	7	1	1371	22	35	8
HC24-RM027	92.00	93.60	Core	297	116	83	181	33	79	11	46	12	67	5	13	2	12	2	7	1	6	1	1279	33	15	8
HC24-RM027	93.60	95.00	Core	171	64	50	107	20	45	6	28	8	37	4	8	1	7	1	3	0	3	0	1108	22	3	2
HC24-RM027	95.00	97.75	Core	401	137	111	264	51	119	15	63	16	80	5	15	2	15	3	8	1	7	1	1398	43	10	5
HC24-RM027	97.75	100.00	Core	704	143	181	561	128	270	30	113	20	84	3	17	3	15	3	9	1	7	1	952	13	34	8
HC24-RM029	4.71	8.00	Core	792	145	231	647	138	297	36	149	27	77	9	21	3	16	3	7	1	7	1	2452	27	19	6
HC24-RM029	8.00	11.00	Core	734	146	217	588	121	268	33	139	27	79	9	21	3	15	3	7	1	7	1	2567	28	18	6
HC24-RM029	11.00	14.00	Core	1388	195	369	1193	270	580	63	240	40	105	9	30	4	22	4	10	1	9	1	2512	32	30	7
HC24-RM029	14.00	17.00	Core	767	187	237	580	109	258	34	149	30	103	9	26	4	20	4	10	1	9	1	2837	35	15	6
HC24-RM029	17.00	20.00	Core	731	167	223	564	109	253	32	141	29	91	9	24	3	18	3	9	1	8	1	2553	34	17	6
HC24-RM029	20.00	23.00	Core	924	167	266	757	161	350	43	171	32	91	9	25	3	17	3	9	1	8	1	2330	33	24	7
HC24-RM029	23.00	26.00	Core	812	163	238	649	135	296	37	153	28	89	9	23	3	17	3	9	1	8	1	2729	37	20	7
HC24-RM029	26.00	29.00	Core	797	182	248	615	116	275	36	156	32	99	9	26	4	20	4	9	1	9	1	2918	33	19	7
HC24-RM029	29.00	32.00	Core	1011	230	324	781	141	346	46	206	42	123	9	36	5	25	5	12	2	11	2	3863	47	20	7
HC24-RM029	32.00	35.00	Core	902	182	281	720	140	323	41	181	35	98	9	28	4	20	4	9	1	8	1	2904	38	20	6
HC24-RM029	35.00	38.00	Core	872	166	257	706	147	323	40	165	31	89	10	25	3	18	3	9	1	7	1	2310	28	21	6
HC24-RM029	38.00	41.66	Core	759	145	221	614	130	281	35	141	27	77	9	22	3	15	3	7	1	7	1	2155	27	17	5

For personal use only

DHID	From	To	Sample Type	TREO	HREO	MREO	LREO	La2O3	Ce2O3	Pr6O11	Nd2O3	Sm2O3	Y2O3	Eu2O3	Gd2O3	Tb4O7	Dy2O3	Ho2O3	Er2O3	Tm2O3	Yb2O3	Lu2O3	ZrO2	Sc2O3	ThO2	UO2
HC24-RM029	41.66	42.40	Core	305	78	82	227	47	107	13	50	10	46	2	9	1	8	2	4	1	4	1	457	12	43	7
HC24-RM029	42.40	44.00	Core	907	152	253	755	164	357	41	163	30	82	9	22	3	16	3	8	1	7	1	1851	32	19	7
HC24-RM029	44.00	47.00	Core	823	163	244	660	135	301	37	157	30	89	10	23	3	17	3	8	1	8	1	2533	32	17	5
HC24-RM029	47.00	50.00	Core	765	163	232	602	117	273	34	149	29	88	10	24	3	17	3	8	1	8	1	2567	30	16	5
HC24-RM029	50.00	53.00	Core	691	150	213	541	104	243	31	136	27	80	9	22	3	16	3	8	1	7	1	2364	29	14	5
HC24-RM029	53.00	56.00	Core	586	115	165	471	102	217	26	106	20	61	10	16	2	11	2	6	1	5	1	1560	22	17	5
HC24-RM029	56.00	59.00	Core	801	160	241	641	128	292	36	155	30	87	9	24	3	17	3	8	1	7	1	2283	32	17	5
HC24-RM029	59.00	62.10	Core	706	146	210	560	112	256	32	134	26	80	9	20	3	15	3	7	1	7	1	2107	28	15	5
HC24-RM029	62.10	63.17	Core	683	143	199	540	110	249	30	126	25	78	9	19	3	15	3	7	1	7	1	2627	28	17	5
HC24-RM029	63.17	64.93	Core	730	186	231	544	97	239	34	145	29	105	8	25	3	20	4	10	1	9	1	4809	39	14	6
HC24-RM029	64.93	65.46	Core	900	190	262	710	146	326	42	164	32	107	8	26	4	20	4	10	1	9	1	3120	34	22	5
HC24-RM029	65.46	67.15	Core	651	160	198	491	94	218	28	125	26	89	9	21	3	16	3	9	1	8	1	3985	44	11	5
HC24-RM029	67.15	68.60	Core	824	182	247	642	127	291	39	155	30	101	8	26	3	20	4	9	1	9	1	3242	43	16	5
HC24-RM029	68.60	70.00	Core	784	193	239	591	112	264	36	149	30	106	9	26	3	21	4	11	1	10	2	3796	46	12	4
HC24-RM029	70.00	72.00	Core	749	171	219	578	117	263	34	135	29	96	8	22	3	18	3	10	1	9	1	3823	32	17	5
HC24-RM029	72.00	74.68	Core	717	162	215	555	111	249	33	135	27	90	8	22	3	17	3	9	1	8	1	3269	31	16	5
HC24-RM029	74.68	77.00	Core	673	166	208	507	95	225	31	128	28	91	9	23	3	18	3	9	1	8	1	2411	35	11	4
HC24-RM029	77.00	80.00	Core	709	166	222	543	101	241	33	138	30	90	9	24	3	18	3	9	1	8	1	2317	35	14	5
HC24-RM034	2.00	5.00	Core	1101	245	345	856	159	384	51	217	45	131	13	37	5	27	5	13	2	10	2	2350	13	15	4
HC24-RM034	5.00	8.00	Core	1244	281	384	963	177	440	56	241	49	150	15	41	6	32	6	15	2	12	2	2188	17	21	4
HC24-RM034	8.00	9.73	Core	1242	302	395	940	165	421	56	247	51	163	15	44	6	35	6	16	2	13	2	2323	16	19	4
HC24-RM034	9.73	11.00	Core	1281	294	389	987	181	457	58	241	50	160	14	41	6	34	6	16	2	13	2	2296	17	22	6
HC24-RM034	11.00	14.00	Core	1098	243	333	855	158	396	49	209	43	127	16	35	5	27	5	13	2	11	2	2215	17	16	5
HC24-RM034	14.00	17.00	Core	1419	277	421	1142	218	540	65	268	51	147	15	42	6	31	6	14	2	12	2	2094	17	20	4
HC24-RM034	17.00	20.00	Core	1665	296	501	1369	264	645	77	322	61	155	14	47	7	34	6	16	2	13	2	2560	17	25	5
HC24-RM034	20.00	22.50	Core	1466	298	444	1168	217	547	66	281	57	159	15	45	6	34	6	15	2	14	2	2702	19	24	6
HC24-RM034	22.50	23.36	Core	1470	298	422	1172	233	558	66	264	51	163	11	43	6	35	6	16	2	14	2	2425	17	34	9
HC24-RM034	23.36	26.00	Core	1466	307	444	1159	215	543	67	278	56	165	14	45	7	36	6	16	2	14	2	2931	18	22	5
HC24-RM034	26.00	29.29	Core	1554	341	496	1213	213	552	71	313	64	183	15	52	8	40	7	18	2	14	2	3296	21	20	5
HC24-RM034	29.29	32.00	Core	668	150	199	518	101	237	30	125	25	81	9	21	3	16	3	8	1	7	1	2276	24	10	4
HC24-RM034	32.00	33.13	Core	902	198	262	704	140	328	40	163	33	110	8	27	4	22	4	11	1	9	2	2188	22	18	6
HC24-RM034	33.13	35.00	Core	349	97	103	252	48	113	14	63	14	52	7	12	2	10	2	5	1	5	1	2107	20	3	3
HC24-RM034	35.00	38.00	Core	495	122	140	373	75	173	21	87	17	67	8	15	2	13	2	7	1	6	1	1945	22	11	5
HC24-RM034	38.00	38.88	Core	603	141	177	462	93	210	27	112	20	75	9	19	3	15	3	8	1	7	1	2796	29	9	3
HC24-RM034	38.88	39.67	Core	720	160	193	560	124	263	31	121	21	92	7	19	3	17	3	9	1	8	1	1425	17	26	10
HC24-RM034	39.67	41.00	Core	929	204	281	725	146	324	43	178	34	115	9	28	4	22	4	11	1	9	1	2161	25	15	5
HC24-RM034	41.00	44.00	Core	544	119	161	425	88	190	25	103	19	64	8	16	2	12	2	7	1	6	1	2479	19	9	4
HC24-RM034	44.00	47.00	Core	880	160	261	720	154	326	42	168	30	86	8	24	3	18	3	9	1	7	1	2067	19	17	5
HC24-RM034	47.00	50.00	Core	422	114	130	308	59	133	18	80	18	61	8	15	2	12	2	6	1	6	1	1925	23	7	3
HC24-RM034	50.00	53.00	Core	678	162	219	516	97	222	31	138	28	86	10	23	3	19	3	9	1	7	1	2276	22	8	3
HC24-RM034	53.00	54.85	Core	564	146	171	418	81	185	25	105	22	77	10	20	3	16	3	8	1	7	1	2404	24	7	3

For personal use only

DHID	From	To	Sample Type	TREO	HREO	MREO	LREO	La2O3	Ce2O3	Pr6O11	Nd2O3	Sm2O3	Y2O3	Eu2O3	Gd2O3	Tb4O7	Dy2O3	Ho2O3	Er2O3	Tm2O3	Yb2O3	Lu2O3	ZrO2	Sc2O3	ThO2	UO2
HC24-RM034	54.85	56.89	Core	522	120	154	402	83	181	23	97	18	62	8	17	2	14	2	7	1	6	1	2242	23	6	3
HC24-RM034	56.89	58.00	Core	363	110	109	253	49	108	14	67	15	59	8	14	2	11	2	6	1	6	1	2452	26	2	3
HC24-RM034	58.00	61.00	Core	533	139	162	394	76	174	23	100	21	73	9	19	3	15	3	8	1	7	1	2769	22	8	3
HC24-RM034	61.00	63.35	Core	746	162	230	584	113	263	34	145	29	84	10	25	3	19	3	9	1	7	1	2810	20	8	2
HC24-RM034	63.35	66.00	Core	511	138	157	373	71	163	22	96	21	72	9	19	3	15	3	8	1	7	1	2398	23	6	2
HC24-RM034	66.00	69.00	Core	567	136	169	431	87	193	25	105	21	72	8	18	3	15	3	8	1	7	1	2560	22	8	3
HC24-RM034	69.00	72.00	Core	467	129	138	338	67	149	19	85	18	70	7	17	2	14	3	7	1	7	1	2215	25	6	2
HC24-RM034	72.00	75.00	Core	345	108	107	237	42	101	14	66	14	57	8	14	2	11	2	6	1	6	1	2350	24	3	2
HC24-RM034	75.00	78.00	Core	494	129	142	365	74	165	21	86	19	70	8	16	2	14	2	8	1	7	1	2202	23	6	2
HC24-RM034	78.00	81.00	Core	320	106	99	214	38	90	13	60	13	56	8	13	2	11	2	6	1	6	1	2182	25	2	2
HC24-RM034	81.00	83.54	Core	386	111	118	275	52	119	16	73	15	60	7	14	2	12	2	6	1	6	1	2377	23	5	3
HC24-RM034	83.54	84.12	Core	1356	275	344	1081	251	520	58	214	38	161	6	33	5	29	6	16	2	15	2	1412	19	56	29
HC24-RM034	84.12	87.00	Core	519	133	157	386	75	171	23	97	20	71	8	18	3	14	3	7	1	7	1	2249	26	7	3
HC24-RM034	87.00	90.00	Core	418	124	125	294	56	128	17	76	17	67	8	16	2	13	2	7	1	7	1	2364	26	4	2
HC24-RM034	90.00	93.00	Core	466	131	136	335	66	149	19	83	18	70	8	17	2	14	3	8	1	7	1	2256	24	8	3
HC24-RM034	93.00	96.00	Core	466	131	144	335	61	147	20	87	20	68	9	18	2	15	3	7	1	7	1	2263	27	5	2
HC24-RM034	96.00	96.65	Core	1017	255	320	762	137	340	46	197	42	133	15	38	5	30	5	14	2	11	2	3904	26	12	4
HC24-RM034	96.65	97.08	Core	952	216	295	736	135	334	44	187	36	118	6	33	4	24	4	13	2	10	2	4674	36	13	4
HC24-RM034	97.08	99.00	Core	627	151	190	476	93	213	28	119	23	79	10	21	3	17	3	9	1	7	1	2512	19	8	3
HC24-RM034	99.00	100.91	Core	340	107	105	233	43	99	13	64	14	55	8	14	2	12	2	6	1	6	1	2276	27	3	2
HC24-RM034	100.91	101.27	Core	410	95	126	315	60	142	19	78	16	51	4	14	2	11	2	5	1	4	1	816	34	6	2
HC24-RM034	101.27	102.55	Core	2144	345	625	1799	371	852	101	404	71	179	13	59	8	41	7	19	2	15	2	2715	23	34	6
HC24-RM034	102.55	103.74	Core	578	112	153	466	103	224	26	96	17	66	1	15	2	12	2	6	1	6	1	682	10	154	60
HC24-RM034	103.74	106.00	Core	1460	360	467	1100	198	486	65	289	62	189	12	58	8	43	8	20	2	17	3	3012	31	18	4
HC24-RM034	106.00	109.00	Core	1589	361	504	1228	227	550	71	314	66	187	11	61	8	45	8	20	3	16	2	2499	32	22	5
HC24-RM034	109.00	112.00	Core	2192	404	666	1788	346	835	103	422	82	210	12	70	10	49	9	21	3	17	3	2837	30	32	5
HC24-RM034	112.00	115.00	Core	1797	353	546	1444	283	666	82	345	68	187	11	58	8	43	8	18	2	15	3	2661	29	29	7
HC24-RM034	115.00	118.00	Core	1907	466	615	1441	247	646	85	379	84	257	10	75	11	56	10	24	3	17	3	2999	20	26	8
HC24-RM034	118.00	121.00	Core	5553	630	1603	4923	1070	2346	273	1061	173	321	14	127	16	80	14	30	4	21	3	2290	16	89	10
HC24-RM034	121.00	124.00	Core	7145	733	2053	6412	1413	3059	356	1371	213	367	15	156	20	93	15	35	4	24	4	3418	17	115	10
HC24-RM034	124.00	127.00	Core	2792	641	919	2151	362	964	127	572	126	347	11	110	15	79	14	34	4	23	4	7132	24	30	7
HC24-RM034	127.00	130.00	Core	2093	469	675	1624	281	736	96	421	90	253	11	79	11	57	10	24	3	18	3	5228	27	26	6
HC24-RM034	130.00	133.00	Core	1841	383	590	1458	257	666	85	374	76	201	11	66	9	46	8	20	3	16	3	4795	32	23	5
HC24-RM034	133.00	136.00	Core	2820	521	896	2299	416	1064	134	572	113	274	12	94	13	64	11	27	3	20	3	5606	33	38	7
HC24-RM034	136.00	139.00	Core	2381	571	803	1810	290	801	109	497	113	306	12	97	14	70	13	29	4	22	4	7213	33	25	7
HC24-RM034	139.00	142.00	Core	1423	318	452	1105	197	500	65	283	60	171	12	50	7	37	7	16	2	14	2	4174	32	18	5
HC24-RM034	142.00	145.00	Core	1887	400	599	1487	266	678	87	378	78	215	12	65	9	47	9	21	3	16	3	4809	31	25	6
HC24-RM034	145.00	148.00	Core	2346	462	737	1884	344	870	108	471	91	244	12	80	11	56	10	24	3	19	3	6241	29	33	7
HC24-RM034	148.00	150.10	Core	1168	284	379	884	154	389	53	237	51	153	12	43	6	32	6	15	2	13	2	5011	31	15	5
HC24-RM035	0.00	3.00	Core	3653	327	1009	3326	755	1609	181	680	101	162	13	66	8	39	7	15	2	13	2	2256	26	72	8
HC24-RM035	3.00	6.00	Core	3839	339	1066	3500	794	1689	190	722	105	168	13	68	9	40	7	16	2	14	2	2337	26	77	8

DHID	From	To	Sample Type	TREO	HREO	MREO	LREO	La2O3	Ce2O3	Pr6O11	Nd2O3	Sm2O3	Y2O3	Eu2O3	Gd2O3	Tb4O7	Dy2O3	Ho2O3	Er2O3	Tm2O3	Yb2O3	Lu2O3	ZrO2	Sc2O3	ThO2	UO2
HC24-RM035	6.00	9.00	Core	3962	339	1085	3623	849	1738	196	734	106	168	12	69	8	41	7	16	2	14	2	2702	25	80	9
HC24-RM035	9.00	10.24	Core	3561	316	992	3245	738	1560	175	673	99	157	12	64	8	37	6	15	2	13	2	2229	27	70	8
HC24-RM035	10.24	10.57	Core	958	118	262	840	189	405	46	173	27	65	3	19	3	13	2	6	1	5	1	670	12	69	10
HC24-RM035	10.57	13.00	Core	3586	313	987	3273	746	1585	178	666	98	155	12	63	8	37	6	15	2	13	2	2155	23	77	9
HC24-RM035	13.00	16.00	Core	3894	334	1075	3560	819	1714	191	731	105	167	12	68	8	40	7	15	2	13	2	2411	25	79	9
HC24-RM035	16.00	19.00	Core	3133	298	872	2835	623	1382	155	587	88	149	12	58	7	35	6	15	2	12	2	1952	23	63	8
HC24-RM035	19.00	22.00	Core	4505	361	1240	4144	949	2008	226	842	119	172	13	79	9	44	7	18	2	15	2	2742	26	105	10
HC24-RM035	22.00	25.00	Core	4109	336	1118	3773	866	1836	205	758	108	166	12	70	8	39	7	16	2	14	2	2479	25	89	8
HC24-RM035	25.00	28.00	Core	4803	370	1315	4433	1026	2144	238	899	126	182	14	79	9	43	8	17	2	14	2	2823	27	105	10
HC24-RM035	28.00	31.00	Core	4962	358	1360	4604	1073	2223	250	928	130	172	14	78	9	43	7	17	2	14	2	2715	26	103	10
HC24-RM035	31.00	34.00	Core	4878	364	1322	4514	1058	2187	244	899	126	178	13	78	9	44	7	17	2	14	2	2796	24	99	10
HC24-RM035	34.00	37.00	Core	4894	356	1331	4538	1064	2193	245	910	126	175	13	76	9	41	7	17	2	14	2	2533	23	102	10
HC24-RM035	37.00	40.00	Core	5145	384	1407	4761	1107	2303	256	961	134	189	13	81	10	46	8	18	2	15	2	3093	25	110	12
HC24-RM035	40.00	43.00	Core	4035	309	1095	3726	875	1800	201	745	105	151	12	65	8	36	6	15	2	12	2	2276	20	89	9
HC24-RM035	43.00	46.00	Core	3647	308	995	3339	767	1621	180	672	99	151	13	63	8	36	6	15	2	12	2	1884	19	76	8
HC24-RM035	46.00	47.42	Core	3642	318	1004	3324	763	1603	180	679	99	156	12	65	8	38	7	15	2	13	2	1932	21	75	8
HC24-RM035	47.42	50.00	Core	3777	336	1031	3441	801	1658	182	701	99	163	14	69	9	40	7	17	2	13	2	2188	22	81	9
HC24-RM035	50.00	53.00	Core	3685	346	1004	3339	776	1609	179	677	98	170	14	70	9	41	7	17	2	14	2	2100	24	80	10
HC24-RM035	53.00	56.00	Core	3469	320	941	3149	737	1517	167	637	91	159	13	63	8	38	6	16	2	13	2	2100	21	75	8
HC24-RM035	56.00	59.00	Core	3164	317	866	2847	651	1376	152	581	87	157	13	62	8	38	6	16	2	13	2	2209	21	66	8
HC24-RM035	59.00	62.00	Core	3564	327	966	3237	745	1572	173	653	94	161	14	66	8	38	7	16	2	13	2	2067	21	77	8
HC24-RM035	62.00	65.00	Core	3469	324	953	3145	733	1505	169	644	94	161	14	65	8	38	6	16	2	12	2	2019	21	76	9
HC24-RM035	65.00	67.26	Core	3496	345	958	3151	726	1517	169	642	97	170	13	69	9	41	7	18	2	14	2	2357	24	76	10
HC24-RM035	67.26	69.66	Core	3522	312	961	3210	752	1542	172	650	94	154	14	61	8	37	6	16	2	12	2	1736	20	75	9
HC24-RM035	69.66	72.00	Core	4832	334	1292	4498	1061	2193	238	885	121	161	14	72	8	40	6	15	2	14	2	2215	18	107	11
HC24-RM035	72.00	75.00	Core	4452	346	1197	4106	942	2015	219	814	116	170	13	75	9	39	6	17	2	13	2	2512	20	95	11
HC24-RM035	75.00	76.45	Core	4018	341	1078	3677	866	1781	195	728	107	170	13	68	8	40	7	17	2	14	2	2263	20	87	13
HC24-RM035	76.45	79.00	Core	4953	384	1326	4569	1081	2217	241	899	131	190	13	82	9	46	7	18	2	15	2	2675	22	105	13
HC24-RM035	79.00	82.00	Core	5267	402	1426	4865	1113	2383	259	975	135	197	13	90	10	47	7	18	2	16	2	2702	22	107	9
HC24-RM035	82.00	85.00	Core	5645	397	1507	5248	1231	2567	277	1030	143	189	14	91	11	46	7	19	2	15	3	2715	21	112	10
HC24-RM035	85.00	87.36	Core	4691	395	1274	4296	978	2101	228	863	126	190	13	87	10	47	8	19	2	16	3	2891	22	94	9
HC24-RM035	87.36	88.63	Core	4392	398	1196	3994	908	1947	215	805	119	197	12	83	10	47	8	20	2	16	3	2404	22	93	13
HC24-RM035	88.63	88.82	Core	331	60	84	271	63	131	15	53	9	35	1	7	1	6	1	3	1	4	1	282	9	74	13
HC24-RM035	88.82	91.00	Core	5071	378	1370	4693	1067	2309	251	932	134	182	13	87	10	43	7	17	2	15	2	2371	19	103	9
HC24-RM035	91.00	94.00	Core	5220	396	1383	4824	1133	2365	253	938	135	195	13	85	10	47	7	18	2	16	3	2634	23	106	12
HC24-RM035	94.00	95.68	Core	4825	369	1288	4456	1021	2199	237	877	122	177	13	82	9	43	7	18	2	15	3	2418	17	103	12
HC24-RM035	95.68	97.37	Core	4471	374	1228	4097	951	1972	220	834	120	181	13	82	10	44	7	18	2	15	2	2155	19	96	11
HC24-RM035	97.37	100.00	Core	4461	374	1215	4087	922	2002	219	826	118	181	14	82	9	43	7	18	2	15	3	2182	20	96	11
HC24-RM035	100.00	103.00	Core	4302	373	1171	3929	889	1922	210	793	115	182	13	80	9	44	7	19	2	15	2	2019	17	94	10
HC24-RM035	103.00	106.00	Core	4332	328	1147	4004	952	1953	210	776	113	154	14	73	9	39	7	16	2	12	2	1952	16	98	9
HC24-RM035	106.00	109.00	Core	3970	334	1068	3636	853	1763	192	721	107	159	14	72	8	40	7	17	2	13	2	1986	17	86	9

For personal use only

DHID	From	To	Sample Type	TREO	HREO	MREO	LREO	La2O3	Ce2O3	Pr6O11	Nd2O3	Sm2O3	Y2O3	Eu2O3	Gd2O3	Tb4O7	Dy2O3	Ho2O3	Er2O3	Tm2O3	Yb2O3	Lu2O3	ZrO2	Sc2O3	ThO2	UO2
HC24-RM035	109.00	112.00	Core	3798	358	1027	3440	801	1664	181	691	103	173	14	74	9	43	7	18	2	15	3	2330	19	80	9
HC24-RM035	112.00	115.00	Core	3928	406	1074	3522	807	1701	188	713	113	199	14	82	10	50	8	21	3	16	3	2627	20	78	10
HC24-RM035	115.00	118.00	Core	4060	403	1107	3657	846	1763	196	736	116	196	14	85	10	49	8	20	2	16	3	2540	19	80	10
HC24-RM035	118.00	121.63	Core	4486	421	1237	4065	930	1959	219	830	127	207	14	88	11	50	8	20	3	17	3	2580	21	91	9
HC24-RM035	121.63	124.00	Core	4795	408	1308	4387	1032	2107	234	884	130	196	14	88	11	49	8	20	3	16	3	2452	17	99	10
HC24-RM035	124.00	127.00	Core	4817	385	1288	4432	1052	2150	236	869	125	181	14	87	10	48	8	19	2	14	2	2344	17	102	10
HC24-RM035	127.00	130.00	Core	4831	406	1302	4425	1034	2150	233	875	133	193	14	90	11	50	8	19	3	15	3	2580	16	97	10
HC24-RM035	130.00	133.00	Core	4854	389	1318	4465	1048	2156	237	891	133	184	14	88	10	47	8	19	2	15	2	2546	20	96	9
HC24-RM035	133.00	136.00	Core	4765	419	1291	4346	1010	2107	230	868	131	201	14	91	11	51	8	20	3	17	3	2783	19	96	9
HC24-RM035	136.00	139.00	Core	4479	420	1230	4059	932	1959	216	823	129	206	14	86	11	51	9	21	3	16	3	2627	19	94	10
HC24-RM035	139.00	142.00	Core	4736	426	1294	4310	1003	2076	228	870	133	207	14	91	11	52	9	20	3	16	3	2627	18	95	9
HC24-RM035	142.00	145.00	Core	4480	386	1224	4094	955	1972	219	825	123	188	14	82	10	47	8	19	2	14	2	2384	16	90	10
HC24-RM035	145.00	148.00	Core	4683	431	1288	4252	969	2058	227	865	133	210	14	92	11	52	9	21	3	16	3	2445	19	93	9
HC24-RM035	148.00	151.00	Core	4644	444	1272	4200	973	2021	222	851	133	217	14	93	11	55	9	22	3	17	3	2391	19	93	8
HC24-RM035	151.00	153.33	Core	4623	444	1265	4179	964	2015	224	843	133	218	15	92	11	54	9	22	3	17	3	2506	18	93	10
HC24-RM035	153.33	153.56	Core	1364	192	357	1172	269	572	61	230	40	104	6	31	4	22	4	10	1	9	1	848	12	66	12
HC24-RM035	153.56	158.60	Core	4396	435	1210	3961	911	1904	213	805	128	213	14	91	11	53	9	22	3	16	3	2323	17	89	9
HC24-RM035	158.60	159.84	Core	1317	160	353	1157	267	559	60	233	38	85	5	28	4	18	3	8	1	7	1	532	11	58	19
HC24-RM035	159.84	162.22	Core	4152	474	1138	3678	836	1775	196	749	122	239	14	91	12	59	10	24	3	19	3	2661	22	82	12
HC24-RM035	162.22	162.63	Core	1287	165	352	1122	249	545	60	230	38	85	4	30	4	20	3	9	1	8	1	756	10	61	15
HC24-RM035	162.63	166.00	Core	4991	484	1361	4507	1037	2180	243	907	140	237	16	102	12	59	10	24	3	18	3	2627	15	102	10
HC24-RM035	166.00	169.00	Core	5019	490	1372	4529	1030	2199	244	912	144	245	15	100	13	59	10	24	3	18	3	2695	19	102	11
HC24-RM035	169.00	172.00	Core	4393	452	1208	3941	908	1892	211	801	129	222	14	92	12	55	10	23	3	18	3	2445	17	91	10
HC24-RM035	172.00	172.65	Core	4430	444	1225	3986	917	1910	215	814	130	218	15	91	11	55	9	22	3	17	3	2249	19	91	9
HC24-RM035	172.65	175.00	Core	4824	494	1334	4330	993	2076	232	892	137	244	15	102	13	60	10	25	3	19	3	2553	19	102	10
HC24-RM035	175.00	178.00	Core	4850	457	1335	4393	1020	2107	234	893	139	222	15	97	12	57	9	22	3	17	3	2540	18	99	10
HC24-RM035	178.00	181.00	Core	4851	464	1346	4387	1003	2107	236	902	139	227	15	99	12	57	9	22	3	17	3	2594	18	99	10
HC24-RM035	181.00	181.84	Core	3828	372	1038	3456	795	1677	184	692	108	182	15	77	9	45	8	18	2	14	2	1648	13	79	9
HC24-RM035	181.84	182.10	Core	742	136	198	606	134	292	33	124	23	77	2	18	3	15	3	8	1	8	1	371	8	55	30
HC24-RM035	182.10	183.85	Core	3935	405	1081	3530	813	1695	189	718	115	204	14	80	10	49	8	20	3	15	2	2040	14	79	9
HC24-RM035	183.85	184.00	Core	728	136	199	592	131	280	33	125	23	75	3	20	3	15	3	8	1	7	1	517	9	57	29
HC24-RM035	184.00	185.00	Core	4031	416	1111	3615	828	1738	196	737	116	206	14	84	11	51	9	20	3	15	3	1932	16	82	9
HC24-RM035	185.00	188.00	Core	4044	456	1133	3588	807	1714	199	748	120	233	14	88	11	55	10	22	3	17	3	2621	17	78	9
HC24-RM035	188.00	191.00	Core	4650	471	1290	4179	950	2008	230	856	135	234	15	96	12	57	10	24	3	17	3	2621	18	94	9
HC24-RM035	191.00	194.00	Core	4936	448	1364	4488	1029	2162	246	911	140	221	15	93	12	55	9	21	3	16	3	2688	14	96	10
HC24-RM035	194.00	197.00	Core	5087	453	1408	4634	1063	2230	255	942	144	225	15	94	12	55	9	21	3	16	3	2485	13	101	9
HC24-RM035	197.00	200.00	Core	5363	496	1482	4867	1112	2346	267	988	154	243	15	106	13	60	11	24	3	18	3	2485	17	111	10
HC24-RM035	200.00	203.00	Core	5339	479	1485	4860	1118	2328	268	996	150	236	15	101	12	59	10	23	3	17	3	2587	17	107	10
HC24-RM035	203.00	206.00	Core	5051	494	1395	4557	1048	2187	249	930	143	248	15	100	13	60	10	24	3	18	3	2668	16	99	10
HC24-RM035	206.00	209.00	Core	5349	509	1473	4840	1120	2322	263	982	153	251	15	107	13	62	11	25	3	19	3	2567	15	107	10
HC24-RM035	209.00	212.00	Core	4066	423	1129	3643	834	1744	198	748	119	207	14	86	11	53	9	21	3	16	3	1911	14	81	9



DHID	From	To	Sample Type	TREO	HREO	MREO	LREO	La2O3	Ce2O3	Pr6O11	Nd2O3	Sm2O3	Y2O3	Eu2O3	Gd2O3	Tb4O7	Dy2O3	Ho2O3	Er2O3	Tm2O3	Yb2O3	Lu2O3	ZrO2	Sc2O3	ThO2	UO2
HC24-RM035	212.00	215.00	Core	4351	419	1208	3932	901	1886	214	805	126	205	14	87	11	52	9	21	3	15	2	1749	15	85	12
HC24-RM035	215.00	218.00	Core	4082	374	1124	3708	858	1781	201	751	117	187	12	77	10	45	8	18	2	13	2	1621	14	85	9
HC24-RM035	218.00	221.00	Core	4476	439	1231	4037	930	1941	220	820	126	220	14	89	11	54	9	21	3	15	3	1925	15	84	9
HC24-RM035	221.00	224.00	Core	4098	437	1136	3661	846	1744	201	749	121	218	15	86	11	54	9	22	3	16	3	1972	16	78	8
HC24-RM035	224.00	227.00	Core	4132	437	1154	3695	848	1757	203	764	123	221	14	86	11	53	9	21	3	16	3	1810	17	79	10
HC24-RM035	227.00	230.00	Core	4190	431	1158	3759	878	1787	204	770	120	214	14	87	11	53	9	21	3	16	3	1952	14	80	8
HC24-RM035	230.00	233.00	Core	4624	437	1278	4187	959	2015	230	851	132	218	14	90	11	54	9	21	3	15	2	1972	13	87	8
HC24-RM035	233.00	235.10	Core	4200	430	1158	3770	864	1812	205	767	122	217	13	85	11	53	9	22	3	15	2	1932	14	83	13
HC24-RM035	235.10	235.97	Core	872	165	237	707	154	337	40	149	27	98	2	22	3	18	3	9	1	8	1	467	9	88	48
HC24-RM035	235.97	239.13	Core	4098	427	1143	3671	836	1757	202	755	121	213	13	86	11	54	9	21	3	15	2	1722	13	78	8
HC24-RM035	239.13	242.00	Core	4287	453	1190	3834	874	1836	210	788	126	228	14	89	11	55	10	23	3	17	3	1979	16	81	8
HC24-RM035	242.00	245.00	Core	4753	461	1309	4292	987	2064	233	872	136	232	14	93	12	56	10	22	3	16	3	2006	16	89	9
HC24-RM035	245.00	248.00	Core	4809	447	1334	4362	1007	2088	239	888	140	223	15	92	12	55	9	21	3	15	2	1790	15	92	8
HC24-RM035	248.00	251.00	Core	4440	457	1228	3983	918	1904	217	814	130	230	14	90	11	56	10	23	3	17	3	1891	15	84	8
HC24-RM035	251.00	254.00	Core	4141	427	1135	3714	850	1793	202	750	119	213	14	85	11	53	9	22	3	15	2	1776	13	78	8
HC24-RM035	254.00	257.00	Core	4681	466	1292	4215	965	2027	230	861	132	232	15	94	12	57	10	23	3	17	3	1918	14	90	9
HC24-RM035	257.00	260.00	Core	4256	442	1167	3814	882	1830	207	773	122	224	14	85	11	54	10	22	3	16	3	1810	15	79	9
HC24-RM035	260.00	263.18	Core	3683	408	1015	3275	748	1572	178	670	107	207	13	78	10	50	9	21	3	15	2	1641	15	68	8
HC24-RM035	263.18	263.94	Core	1366	285	371	1081	230	517	59	230	45	166	6	36	5	32	6	16	2	14	2	1252	20	21	6
HC24-RM035	263.94	264.30	Core	4080	398	1110	3682	854	1775	200	741	112	204	11	77	10	47	8	20	3	16	2	1992	15	82	13
HC24-RM035	264.30	264.63	Core	2277	383	608	1894	419	919	103	384	69	215	10	54	8	44	8	21	3	17	3	1695	25	39	5
HC24-RM035	264.63	266.00	Core	4362	452	1194	3910	903	1879	213	791	124	232	13	87	11	55	9	22	3	17	3	1911	16	83	9
HC24-RM035	266.00	269.00	Core	4317	460	1200	3857	888	1836	211	795	127	234	14	89	11	56	10	23	3	17	3	1992	16	80	9
HC24-RM035	269.00	272.00	Core	4869	491	1326	4378	1011	2113	234	882	138	248	14	99	13	59	10	23	3	19	3	1925	15	91	8
HC24-RM035	272.00	275.00	Core	4298	451	1176	3847	870	1867	206	780	124	227	13	91	11	55	9	22	3	17	3	1837	14	80	8
HC24-RM035	275.00	278.00	Core	4714	490	1301	4224	968	2027	229	864	136	249	14	97	12	60	10	24	3	18	3	1803	13	88	9
HC24-RM035	278.00	281.00	Core	4439	475	1215	3964	907	1910	212	807	128	243	14	93	12	56	10	23	3	18	3	1878	13	83	9
HC24-RM035	281.00	284.00	Core	4477	486	1235	3991	912	1916	214	821	128	245	13	97	12	60	10	24	3	19	3	1932	15	82	8
HC24-RM035	284.00	287.00	Core	4620	482	1263	4138	955	1990	221	841	131	246	13	95	12	58	10	24	3	18	3	1986	12	83	9
HC24-RM035	287.00	290.00	Core	4308	474	1192	3834	875	1836	207	790	126	240	13	95	12	57	10	23	3	18	3	1871	14	80	8
HC24-RM035	290.00	293.00	Core	4900	521	1350	4379	1011	2094	234	899	141	264	14	104	13	63	11	26	3	20	3	2040	13	92	10
HC24-RM035	293.00	296.00	Core	4631	485	1283	4146	944	1990	224	854	134	246	13	97	12	59	10	23	3	19	3	1776	12	86	9
HC24-RM035	296.00	299.00	Core	4648	493	1287	4155	952	1990	222	855	136	247	14	99	13	61	10	24	3	19	3	2087	12	87	9
HC24-RM035	299.00	300.85	Core	4320	474	1196	3846	869	1849	208	793	127	242	13	93	12	56	10	23	3	19	3	1803	13	79	8
HC24-RM028	0.00	1.50	RC	3163	350	860	2813	670	1333	152	570	88	183	12	59	9	41	8	19	2	15	2	2013	12	54	6
HC24-RM028	1.50	3.00	RC	3728	410	999	3318	780	1597	181	657	103	215	13	70	10	48	9	22	3	17	3	2209	15	65	7
HC24-RM028	3.00	4.50	RC	3834	431	1040	3403	805	1621	186	685	106	225	13	73	11	52	9	24	3	18	3	2249	12	71	8
HC24-RM028	4.50	6.00	RC	3790	426	1032	3364	796	1597	185	682	104	225	12	72	11	50	9	23	3	18	3	2256	14	68	7
HC24-RM028	6.00	7.50	RC	3724	422	1023	3302	786	1554	183	674	105	222	12	71	11	50	9	23	3	18	3	2188	13	68	8
HC24-RM028	7.50	9.00	RC	3680	433	1008	3247	758	1542	179	663	105	229	12	72	10	51	10	24	3	19	3	2182	11	65	7
HC24-RM028	9.00	10.50	RC	3818	456	1038	3362	786	1603	185	680	108	243	13	74	11	54	10	25	3	20	3	2357	16	67	8

For personal use only

DHID	From	To	Sample Type	TREO	HREO	MREO	LREO	La2O3	Ce2O3	Pr6O11	Nd2O3	Sm2O3	Y2O3	Eu2O3	Gd2O3	Tb4O7	Dy2O3	Ho2O3	Er2O3	Tm2O3	Yb2O3	Lu2O3	ZrO2	Sc2O3	ThO2	UO2
HC24-RM028	10.50	12.00	RC	3709	436	1013	3273	781	1542	181	668	101	230	12	74	11	52	9	23	3	19	3	2168	15	68	7
HC24-RM028	12.00	13.50	RC	3676	444	999	3232	755	1542	177	654	104	236	12	72	11	53	10	24	3	20	3	2222	15	67	9
HC24-RM028	13.50	15.00	RC	3825	442	1039	3383	793	1615	184	684	107	233	12	74	11	53	10	24	3	19	3	2128	14	67	9
HC24-RM028	15.00	16.50	RC	3656	415	991	3241	762	1548	176	653	102	218	12	69	10	50	9	23	3	18	3	1965	17	64	8
HC24-RM028	16.50	18.00	RC	3668	443	996	3225	758	1535	177	653	102	236	12	72	11	53	10	24	3	19	3	2202	14	64	9
HC24-RM028	18.00	19.50	RC	3808	431	1043	3377	794	1603	185	688	107	225	12	72	11	52	10	24	3	19	3	2128	15	66	9
HC24-RM028	19.50	21.00	RC	3637	468	1009	3169	691	1535	172	665	106	250	13	79	11	55	10	25	3	19	3	2553	21	63	8
HC24-RM028	21.00	22.50	RC	3701	456	1025	3245	731	1554	175	679	106	243	14	77	10	55	9	24	3	18	3	2371	21	64	8
HC24-RM028	22.50	24.00	RC	3602	443	993	3159	705	1523	170	657	104	236	13	75	10	52	9	24	3	18	3	2364	21	61	7
HC24-RM028	24.00	25.50	RC	3894	478	1069	3416	763	1652	181	709	111	258	14	78	11	57	10	25	3	19	3	2398	22	63	8
HC24-RM028	25.50	27.00	RC	3885	466	1062	3419	772	1652	182	704	109	248	13	79	11	56	10	24	3	19	3	2269	20	63	7
HC24-RM028	27.00	28.50	RC	3534	483	979	3051	666	1474	166	639	106	263	13	78	11	57	10	25	3	20	3	2391	21	55	7
HC24-RM028	28.50	30.00	RC	3648	477	1003	3171	707	1529	170	660	105	258	13	78	11	57	10	25	3	19	3	2283	19	58	8
HC24-RM028	30.00	31.50	RC	3870	478	1063	3392	769	1628	182	702	111	257	13	80	11	57	10	25	3	19	3	2317	21	61	8
HC24-RM028	31.50	33.00	RC	3870	473	1051	3397	748	1664	182	695	108	251	13	83	11	55	10	25	3	19	3	2344	20	61	8
HC24-RM028	33.00	34.50	RC	3957	463	1078	3494	795	1689	185	714	111	243	14	79	11	57	10	24	3	19	3	2310	21	66	8
HC24-RM028	34.50	36.00	RC	3765	443	1027	3322	749	1609	178	679	107	236	13	75	10	53	9	23	3	18	3	2188	19	62	8
HC24-RM028	36.00	37.50	RC	3496	449	969	3047	679	1462	164	639	103	241	13	75	10	53	9	24	3	18	3	2350	19	58	8
HC24-RM028	37.50	39.00	RC	3826	480	1049	3346	752	1615	179	688	112	253	13	82	11	59	10	26	3	20	3	2553	19	63	8
HC24-RM028	39.00	40.50	RC	3543	447	977	3096	691	1492	168	643	102	237	13	76	10	54	9	24	3	18	3	2371	20	59	8
HC24-RM028	40.50	42.00	RC	3605	463	992	3142	693	1523	170	651	105	246	13	79	10	56	10	24	3	19	3	2540	21	60	8
HC24-RM028	42.00	43.50	RC	3687	447	1018	3240	737	1548	174	673	108	239	13	75	10	53	9	24	3	18	3	2465	20	62	7
HC24-RM028	43.50	45.00	RC	3516	412	956	3104	695	1511	166	630	102	218	13	72	10	48	8	22	3	16	2	2202	17	63	8
HC24-RM028	45.00	46.50	RC	3352	372	909	2980	656	1468	159	603	94	194	13	65	9	44	8	19	2	16	2	2222	17	58	8
HC24-RM028	46.50	48.00	RC	3706	408	1011	3298	742	1603	178	670	105	215	13	70	10	48	8	21	3	17	3	2229	18	65	8
HC24-RM028	48.00	49.50	RC	3147	355	856	2792	616	1370	150	569	87	188	12	61	8	42	7	18	2	15	2	1911	16	59	9
HC24-RM028	49.50	51.00	RC	3227	392	892	2835	617	1382	154	589	93	209	11	66	9	47	8	21	3	16	2	1925	17	59	9
HC24-RM028	51.00	52.50	RC	3075	385	859	2690	590	1296	145	568	91	205	12	65	9	46	8	20	2	16	2	1992	18	58	8
HC24-RM028	52.50	54.00	RC	3060	403	852	2657	573	1290	143	559	92	214	12	67	9	49	8	22	3	16	3	2175	17	53	8
HC24-RM028	54.00	55.50	RC	2842	349	775	2493	545	1222	134	513	79	185	12	59	8	41	7	18	2	15	2	2087	17	50	7
HC24-RM028	55.50	57.00	RC	3428	378	939	3050	683	1480	164	628	95	202	13	65	8	44	8	19	2	15	2	2195	18	61	7
HC24-RM028	57.00	58.50	RC	3605	427	992	3178	704	1542	170	658	104	229	13	71	9	51	8	22	3	18	3	2222	17	63	7
HC24-RM028	58.50	60.00	RC	3384	439	950	2945	640	1419	159	624	103	232	12	75	10	54	9	23	3	18	3	2046	18	58	7
HC24-RM028	60.00	61.50	RC	3358	434	923	2924	643	1419	159	605	98	232	13	72	10	51	9	23	3	18	3	2303	21	56	7
HC24-RM028	61.50	63.00	RC	3493	454	962	3039	661	1480	163	632	103	244	13	74	10	54	10	24	3	19	3	2222	21	57	7
HC24-RM028	63.00	64.50	RC	3799	502	1046	3297	737	1585	176	687	112	270	13	84	11	60	10	27	3	21	3	2317	20	62	8
HC24-RM028	64.50	66.00	RC	3663	504	1016	3159	687	1529	169	664	110	272	13	82	11	62	10	27	3	21	3	2337	20	59	7
HC24-RM028	66.00	67.50	RC	3648	516	1032	3132	670	1505	172	671	114	278	13	86	12	63	11	27	3	20	3	2465	21	62	7
HC24-RM028	67.50	69.00	RC	3409	451	958	2958	633	1431	159	632	103	240	13	77	10	54	9	24	3	18	3	2249	21	61	8
HC24-RM028	69.00	70.50	RC	3362	424	927	2938	688	1382	163	604	101	224	12	72	10	49	9	23	3	19	3	2006	13	61	9
HC24-RM028	70.50	72.00	RC	3605	439	998	3166	741	1486	175	656	108	233	13	76	10	49	10	23	3	19	3	2168	12	68	10

For personal use only

DHID	From	To	Sample Type	TREO	HREO	MREO	LREO	La2O3	Ce2O3	Pr6O11	Nd2O3	Sm2O3	Y2O3	Eu2O3	Gd2O3	Tb4O7	Dy2O3	Ho2O3	Er2O3	Tm2O3	Yb2O3	Lu2O3	ZrO2	Sc2O3	ThO2	UO2
HC24-RM028	72.00	73.50	RC	3665	428	1004	3237	756	1535	179	660	107	227	12	72	10	48	10	23	3	20	3	2094	13	66	9
HC24-RM028	73.50	75.00	RC	3643	463	1017	3180	747	1480	175	666	112	246	13	79	11	53	10	25	3	20	3	2033	14	66	9
HC24-RM028	75.00	76.50	RC	3800	481	1063	3319	775	1548	184	695	117	255	13	81	11	56	11	26	3	22	3	2100	12	67	9
HC24-RM028	76.50	78.00	RC	3954	503	1098	3451	803	1621	195	710	122	268	13	86	12	59	11	27	3	21	3	2148	13	70	9
HC24-RM028	78.00	79.50	RC	3822	473	1062	3349	787	1566	184	695	117	250	13	83	11	55	10	25	3	20	3	1972	14	67	9
HC24-RM028	79.50	81.00	RC	3414	400	935	3014	710	1425	169	609	101	211	11	69	10	46	9	21	3	17	3	1810	11	60	9
HC24-RM030	0.00	1.50	RC	2054	255	567	1799	423	844	99	371	62	133	8	43	6	29	6	14	2	12	2	1358	18	41	6
HC24-RM030	1.50	3.00	RC	3725	379	1016	3346	775	1609	181	674	107	193	12	69	9	45	8	20	3	17	3	1797	11	74	8
HC24-RM030	3.00	4.50	RC	3754	407	1051	3347	782	1572	187	693	113	204	13	77	10	48	9	22	3	18	3	1925	12	76	9
HC24-RM030	4.50	6.00	RC	3826	414	1064	3412	803	1603	190	704	112	213	13	76	10	48	9	21	3	18	3	1891	11	75	8
HC24-RM030	6.00	7.50	RC	4075	412	1122	3663	861	1738	204	739	121	210	13	76	10	48	9	22	3	18	3	1938	14	79	8
HC24-RM030	7.50	9.00	RC	4053	435	1136	3618	843	1701	200	748	126	218	13	82	11	51	10	24	3	20	3	2006	12	83	9
HC24-RM030	9.00	10.50	RC	3718	399	1050	3319	778	1548	187	695	111	202	13	75	10	47	8	21	3	17	3	1871	14	73	8
HC24-RM030	10.50	12.00	RC	3896	395	1092	3501	831	1634	197	724	115	199	13	75	10	46	9	20	3	17	3	1790	11	76	8
HC24-RM030	12.00	13.50	RC	4075	398	1114	3677	868	1750	202	738	119	203	13	75	10	45	8	21	3	17	3	1743	12	78	7
HC24-RM030	13.50	15.00	RC	3784	402	1046	3382	796	1597	188	691	110	201	13	77	10	47	9	21	3	18	3	1878	11	74	8
HC24-RM030	15.00	16.50	RC	3849	425	1076	3424	812	1597	190	710	115	215	13	80	11	50	9	22	3	19	3	1979	14	73	7
HC24-RM030	16.50	18.00	RC	3758	425	1041	3333	785	1566	184	688	110	219	13	78	10	49	9	22	3	19	3	1952	16	71	8
HC24-RM030	18.00	19.50	RC	3501	392	975	3109	733	1456	172	644	104	201	13	71	10	45	9	20	3	17	3	1763	11	66	7
HC24-RM030	19.50	21.00	RC	3838	460	1070	3378	781	1591	188	700	118	241	13	82	11	53	10	25	3	19	3	2229	15	71	8
HC24-RM030	21.00	22.50	RC	4114	473	1157	3641	820	1732	202	762	125	245	13	86	12	56	10	25	3	20	3	2398	15	79	10
HC24-RM030	22.50	24.00	RC	3771	393	1037	3378	799	1597	188	684	110	200	12	74	10	45	8	21	3	17	3	1918	13	71	8
HC24-RM030	24.00	25.50	RC	3788	407	1056	3381	792	1591	187	698	113	208	13	75	10	48	9	21	3	17	3	2026	15	71	9
HC24-RM030	25.50	27.00	RC	3590	375	1004	3215	773	1492	178	666	106	189	13	70	9	45	8	20	2	16	3	1932	12	70	8
HC24-RM030	27.00	28.50	RC	3617	401	1001	3216	767	1505	179	657	108	204	12	74	10	47	9	21	3	18	3	1999	12	67	8
HC24-RM030	28.50	30.00	RC	3910	418	1090	3492	828	1634	194	718	118	213	12	78	10	50	9	22	3	18	3	2080	13	73	9
HC24-RM030	30.00	31.50	RC	3764	416	1046	3348	794	1566	187	688	113	215	12	76	10	48	9	22	3	18	3	2114	13	71	9
HC24-RM030	31.50	33.00	RC	3870	421	1085	3449	826	1597	193	714	119	218	12	77	10	49	9	22	3	18	3	2053	11	72	9
HC24-RM030	33.00	34.50	RC	3840	395	1062	3445	816	1621	192	704	112	206	12	71	10	44	9	20	3	17	3	1925	10	68	9
HC24-RM030	34.50	36.00	RC	3797	412	1049	3385	802	1591	188	693	111	211	12	77	10	47	9	22	3	18	3	1945	13	69	11
HC24-RM030	36.00	37.50	RC	3256	382	900	2874	640	1388	155	594	97	196	11	73	9	45	8	19	3	16	2	2087	19	55	7
HC24-RM030	37.50	39.00	RC	3356	377	934	2979	673	1425	161	619	101	192	12	74	9	44	8	19	2	15	2	1918	19	57	8
HC24-RM030	39.00	40.50	RC	3537	407	980	3130	702	1505	167	651	105	210	12	78	10	47	8	20	3	16	3	2094	19	61	7
HC24-RM030	40.50	42.00	RC	3522	392	980	3130	706	1499	169	649	107	201	12	77	9	46	8	19	2	15	3	2006	20	61	6
HC24-RM030	42.00	43.50	RC	3646	414	1019	3232	737	1535	175	675	110	211	12	81	10	49	9	20	3	16	3	2067	21	63	7
HC24-RM030	43.50	45.00	RC	3583	423	1004	3160	704	1511	170	665	110	217	12	81	10	49	9	22	3	17	3	2283	21	62	8
HC24-RM030	45.00	46.50	RC	3575	414	1009	3161	707	1505	170	670	109	210	12	80	10	50	9	21	3	16	3	2175	21	61	7
HC24-RM030	46.50	48.00	RC	3479	426	988	3053	670	1456	167	652	108	219	12	81	10	51	9	21	3	17	3	2290	19	60	9
HC24-RM030	48.00	49.50	RC	3704	432	1042	3272	738	1554	178	688	114	220	12	84	10	52	9	22	3	17	3	2283	21	64	8
HC24-RM030	49.50	51.00	RC	3660	429	1023	3231	721	1548	175	677	110	220	12	82	10	51	9	22	3	17	3	2330	21	62	8
HC24-RM030	51.00	52.50	RC	3748	444	1062	3304	726	1578	181	703	116	231	12	85	10	52	9	22	3	17	3	2290	22	63	7

For personal use only

DHID	From	To	Sample Type	TREO	HREO	MREO	LREO	La2O3	Ce2O3	Pr6O11	Nd2O3	Sm2O3	Y2O3	Eu2O3	Gd2O3	Tb4O7	Dy2O3	Ho2O3	Er2O3	Tm2O3	Yb2O3	Lu2O3	ZrO2	Sc2O3	ThO2	UO2
HC24-RM030	52.50	54.00	RC	3756	450	1052	3306	734	1585	179	692	116	230	12	87	11	54	10	22	3	18	3	2431	20	64	8
HC24-RM030	54.00	55.50	RC	3744	433	1054	3311	733	1585	179	699	115	221	12	85	10	51	9	22	3	17	3	2533	21	65	8
HC24-RM030	55.50	57.00	RC	3581	416	1006	3165	708	1511	173	665	108	211	12	81	10	50	9	21	3	16	3	2310	19	62	8
HC24-RM030	57.00	58.50	RC	3604	413	1009	3191	713	1529	173	666	110	208	12	81	10	50	9	20	3	17	3	2350	20	63	8
HC24-RM030	58.50	60.00	RC	3651	414	1025	3237	728	1542	175	680	112	211	12	81	10	48	9	21	3	16	3	2121	20	61	7
HC24-RM030	60.00	61.50	RC	3606	416	1010	3190	710	1529	173	667	111	211	12	82	10	49	9	21	3	16	3	2249	22	62	7
HC24-RM030	61.50	63.00	RC	3605	401	1004	3204	710	1548	172	666	108	203	12	79	10	48	8	20	3	16	2	2100	21	63	7
HC24-RM030	63.00	64.50	RC	3606	401	1007	3205	714	1542	174	666	109	203	12	79	10	48	8	20	3	16	2	2134	21	63	7
HC24-RM030	64.50	66.00	RC	3659	417	1029	3242	719	1554	175	681	113	212	12	83	10	50	8	21	3	16	2	2242	20	64	7
HC24-RM030	66.00	67.50	RC	3505	406	975	3099	683	1499	167	644	106	206	12	80	10	48	8	20	3	16	3	2128	20	61	7
HC24-RM030	67.50	69.00	RC	3673	419	1024	3254	724	1566	176	675	113	211	12	84	10	50	9	21	3	16	3	2269	21	65	7
HC24-RM030	69.00	70.50	RC	3588	392	996	3196	726	1529	173	663	105	201	12	77	9	46	8	19	3	15	2	2040	20	61	7
HC24-RM030	70.50	72.00	RC	3566	414	1003	3152	704	1505	170	665	108	209	12	82	10	50	9	20	3	16	3	2229	21	61	7
HC24-RM030	72.00	73.50	RC	3814	436	1069	3378	756	1615	183	707	117	223	12	85	10	52	9	22	3	17	3	2506	23	66	8
HC24-RM030	73.50	75.00	RC	3630	409	1024	3221	714	1542	175	681	109	206	12	80	10	49	9	21	3	16	3	2317	23	62	6
HC24-RM030	75.00	76.50	RC	3453	404	971	3049	674	1462	166	642	105	206	12	78	9	49	8	20	3	16	3	2242	21	59	7
HC24-RM030	76.50	78.00	RC	3148	376	879	2772	619	1327	150	580	96	194	11	72	9	44	8	19	2	15	2	1851	20	64	11
HC24-RM030	78.00	79.50	RC	3278	373	911	2905	646	1400	156	604	99	191	11	73	9	43	8	19	2	15	2	2100	21	59	8
HC24-RM030	79.50	81.00	RC	3712	442	1048	3270	732	1554	180	687	117	225	13	86	11	53	9	22	3	17	3	2485	23	66	9
HC24-RM026	0.00	1.50	RC	2033	240	557	1793	388	881	97	367	60	124	8	44	5	28	5	12	2	10	2	1189	18	39	5
HC24-RM026	1.50	3.00	RC	3814	406	1069	3408	763	1634	185	714	112	207	12	81	10	48	8	20	3	15	2	1716	15	67	7
HC24-RM026	3.00	4.50	RC	3721	396	1043	3325	749	1591	179	695	111	200	12	79	10	48	8	20	2	15	2	1574	16	64	6
HC24-RM026	4.50	6.00	RC	3954	441	1105	3513	789	1683	190	734	117	224	12	87	11	53	9	22	3	17	3	1756	15	70	7
HC24-RM026	6.00	7.50	RC	3948	453	1121	3495	806	1634	203	735	117	230	15	86	12	54	10	23	3	17	3	1965	15	72	8
HC24-RM026	7.50	9.00	RC	3610	434	1025	3176	722	1492	185	670	107	219	14	82	11	52	10	23	3	17	3	1857	12	66	7
HC24-RM026	9.00	10.50	RC	3762	440	1066	3322	766	1554	194	698	110	224	14	82	11	53	10	23	3	17	3	1965	13	70	12
HC24-RM026	10.50	12.00	RC	3681	442	1033	3239	741	1529	186	674	109	227	13	81	11	53	10	24	3	17	3	1763	13	68	9
HC24-RM026	12.00	13.50	RC	3702	445	1044	3257	735	1542	189	681	110	227	14	84	11	53	10	23	3	17	3	1776	15	67	9
HC24-RM026	13.50	15.00	RC	3561	401	1011	3160	732	1474	184	663	107	206	14	75	10	47	9	21	3	14	2	1810	12	66	13
HC24-RM026	15.00	16.50	RC	3644	399	1034	3245	740	1529	188	681	107	201	13	78	10	48	8	21	3	15	2	1716	13	69	8
HC24-RM026	16.50	18.00	RC	3728	400	1049	3328	771	1566	194	688	109	201	14	78	10	48	9	21	3	14	2	1817	13	70	8
HC24-RM026	18.00	19.50	RC	4139	420	1157	3719	873	1750	216	765	115	210	14	84	11	50	9	22	3	15	2	1830	12	78	7
HC24-RM026	19.50	21.00	RC	4125	435	1155	3690	849	1750	213	760	118	219	14	85	11	53	9	22	3	16	3	1810	13	77	8
HC24-RM026	21.00	22.50	RC	3730	391	1050	3339	780	1566	193	694	106	196	14	77	10	47	8	20	3	14	2	1972	12	71	7
HC24-RM026	22.50	24.00	RC	4020	399	1112	3621	840	1726	211	731	113	201	14	78	10	47	9	20	3	15	2	1959	14	73	7
HC24-RM026	24.00	25.50	RC	4081	421	1148	3660	848	1726	211	758	117	211	14	83	11	51	9	22	3	15	2	1979	12	75	7
HC24-RM026	25.50	27.00	RC	3807	404	1076	3403	779	1609	198	710	107	201	13	80	11	50	9	20	3	15	2	1938	11	73	8
HC24-RM026	27.00	28.50	RC	3621	400	1024	3221	739	1517	189	670	106	198	14	78	10	49	9	21	3	15	3	1864	14	69	8
HC24-RM026	28.50	30.00	RC	3534	390	1002	3144	713	1486	184	660	101	196	13	74	10	47	8	21	3	15	3	1938	11	65	9
HC24-RM026	30.00	31.50	RC	3885	430	1092	3455	786	1640	200	715	114	218	13	83	11	52	9	23	3	15	3	1736	12	70	7
HC24-RM026	31.50	33.00	RC	3941	425	1106	3516	808	1664	202	729	113	211	14	85	11	51	9	22	3	16	3	1837	11	70	8

DHID	From	To	Sample Type	TREO	HREO	MREO	LREO	La2O3	Ce2O3	Pr6O11	Nd2O3	Sm2O3	Y2O3	Eu2O3	Gd2O3	Tb4O7	Dy2O3	Ho2O3	Er2O3	Tm2O3	Yb2O3	Lu2O3	ZrO2	Sc2O3	ThO2	UO2
HC24-RM026	33.00	34.50	RC	3615	400	1024	3215	745	1505	186	672	107	199	13	79	10	49	9	21	3	15	2	1547	10	66	7
HC24-RM026	34.50	36.00	RC	3875	394	1100	3481	799	1640	199	730	113	194	13	83	10	48	8	20	2	14	2	1648	9	72	9
HC24-RM026	36.00	37.50	RC	3702	387	1036	3315	759	1578	191	680	107	190	13	78	10	48	8	20	3	15	2	1601	12	68	7
HC24-RM026	37.50	39.00	RC	3888	399	1105	3489	802	1640	204	731	112	197	14	80	10	48	9	21	3	15	2	1743	11	72	8
HC24-RM026	39.00	40.50	RC	3826	408	1080	3418	796	1603	197	711	111	203	13	80	11	50	9	21	3	15	3	1763	12	70	8
HC24-RM026	40.50	42.00	RC	3861	417	1087	3444	789	1628	199	716	112	212	14	79	10	50	9	22	3	16	2	1824	12	69	7
HC24-RM026	42.00	43.50	RC	4046	406	1132	3640	846	1720	211	748	115	206	14	79	10	48	9	21	3	14	2	1770	12	73	8
HC24-RM026	43.50	45.00	RC	3733	394	1049	3339	768	1578	192	694	107	198	13	77	10	46	8	21	3	15	3	1540	11	68	10
HC24-RM026	45.00	46.50	RC	3557	429	1009	3128	707	1474	183	658	106	220	13	80	10	52	9	23	3	16	3	1722	10	64	10
HC24-RM026	46.50	48.00	RC	3649	436	1020	3213	738	1517	185	667	106	228	13	78	11	51	10	23	3	16	3	1783	10	65	10
HC24-RM026	48.00	49.50	RC	3760	415	1062	3345	776	1566	193	699	111	215	13	76	10	49	9	22	3	15	3	1695	9	66	9
HC24-RM026	49.50	51.00	RC	3726	418	1057	3308	758	1554	190	695	111	212	13	80	10	51	9	22	3	15	3	1749	11	65	8
HC24-RM026	51.00	52.50	RC	3659	420	1044	3239	752	1505	189	684	109	210	13	81	11	51	9	23	3	16	3	1898	12	66	8
HC24-RM026	52.50	54.00	RC	3890	422	1086	3468	803	1640	197	716	112	213	13	82	11	50	9	22	3	16	3	1851	10	71	9
HC24-RM026	54.00	55.50	RC	3681	413	1006	3268	732	1591	176	664	105	211	13	77	10	51	9	21	3	16	2	1959	14	69	9
HC24-RM026	55.50	57.00	RC	3471	405	964	3066	681	1480	167	635	103	208	12	74	10	49	9	21	3	16	3	1763	12	71	10
HC24-RM026	57.00	58.50	RC	3272	387	899	2885	647	1394	156	593	95	202	12	71	9	46	8	20	2	15	2	1702	13	58	10
HC24-RM026	58.50	60.00	RC	3130	374	860	2756	617	1333	150	566	90	193	12	69	9	45	8	19	2	15	2	1702	13	58	9
HC24-RM026	60.00	61.50	RC	3082	367	849	2715	598	1321	147	560	89	192	11	66	9	44	8	19	2	14	2	1560	11	65	10
HC24-RM026	61.50	63.00	RC	3829	412	1061	3417	776	1640	186	706	109	209	13	79	10	50	8	20	3	17	3	2019	14	73	9
HC24-RM026	63.00	64.50	RC	3735	426	1033	3309	735	1603	179	681	111	221	13	79	11	51	9	21	3	16	2	2026	15	70	9
HC24-RM026	64.50	66.00	RC	3837	420	1058	3417	767	1652	187	699	112	216	13	80	10	50	9	21	3	16	2	1938	13	71	8
HC24-RM026	66.00	67.50	RC	2382	274	657	2108	460	1029	114	436	69	142	9	50	6	32	6	14	2	11	2	1185	11	55	9
HC24-RM026	67.50	69.00	RC	3794	417	1028	3377	763	1646	182	681	105	213	14	78	10	50	9	21	3	16	3	1810	14	73	8
HC24-RM026	69.00	70.50	RC	3894	431	1078	3463	771	1677	188	713	114	220	13	81	11	52	9	22	3	17	3	2013	13	72	8
HC24-RM026	70.50	72.00	RC	3799	425	1050	3374	745	1640	183	694	112	219	13	79	10	51	9	21	3	17	3	1905	13	71	9
HC24-RM026	72.00	73.50	RC	3699	410	1028	3289	729	1591	178	680	111	211	13	76	10	49	9	21	3	16	2	1837	14	69	8
HC24-RM026	73.50	75.00	RC	3443	405	949	3038	679	1468	166	625	100	208	13	75	10	48	9	21	3	16	2	1938	13	65	7
HC24-RM026	75.00	76.50	RC	3488	424	965	3064	668	1492	166	635	103	218	13	78	10	51	9	22	3	17	3	2121	12	63	8
HC24-RM026	76.50	78.00	RC	3639	439	1007	3200	702	1554	175	661	108	230	13	79	11	52	9	22	3	17	3	2006	13	66	8
HC24-RM026	78.00	79.50	RC	3515	421	978	3094	684	1492	170	644	104	218	13	77	10	50	9	21	3	17	3	1884	11	63	8
HC24-RM026	79.50	81.00	RC	3829	457	1059	3372	739	1640	182	699	112	239	13	82	11	55	10	23	3	18	3	2161	15	69	8
HC24-RM031	0.00	1.50	RC	2707	283	743	2424	536	1184	131	496	77	144	12	52	7	32	6	14	2	12	2	1837	19	56	6
HC24-RM031	1.50	3.00	RC	1907	221	521	1686	368	827	92	346	53	117	8	38	5	25	5	11	2	9	1	1364	16	60	9
HC24-RM031	3.00	4.50	RC	2998	308	814	2690	592	1327	144	544	83	158	12	57	7	36	6	15	2	13	2	2141	18	62	7
HC24-RM031	4.50	6.00	RC	2822	292	762	2530	556	1253	138	502	81	147	11	56	7	34	6	15	2	12	2	1918	21	58	6
HC24-RM031	6.00	7.50	RC	2805	291	765	2514	562	1227	137	512	76	151	11	53	7	33	6	14	2	12	2	1965	19	56	7
HC24-RM031	7.50	9.00	RC	2896	306	787	2590	581	1265	140	524	80	156	12	57	7	36	6	15	2	13	2	2013	18	59	7
HC24-RM031	9.00	10.50	RC	2941	312	803	2629	593	1278	141	533	84	158	12	58	8	37	6	16	2	13	2	2080	19	58	8
HC24-RM031	10.50	12.00	RC	2930	309	805	2621	575	1284	140	538	84	159	12	57	7	36	6	15	2	13	2	2060	17	58	8
HC24-RM031	12.00	13.50	RC	2895	303	796	2592	573	1265	141	532	81	156	12	55	7	35	6	15	2	13	2	2067	19	59	8

For personal use only

DHID	From	To	Sample Type	TREO	HREO	MREO	LREO	La2O3	Ce2O3	Pr6O11	Nd2O3	Sm2O3	Y2O3	Eu2O3	Gd2O3	Tb4O7	Dy2O3	Ho2O3	Er2O3	Tm2O3	Yb2O3	Lu2O3	ZrO2	Sc2O3	ThO2	UO2
HC24-RM031	13.50	15.00	RC	2847	294	783	2553	564	1247	138	524	80	149	12	55	7	34	6	15	2	12	2	2006	16	60	7
HC24-RM031	15.00	16.50	RC	2471	258	674	2213	487	1087	119	451	69	131	12	48	6	29	5	12	2	11	2	1594	15	53	6
HC24-RM031	16.50	18.00	RC	2745	273	753	2472	549	1207	135	504	77	137	12	52	6	31	6	13	2	12	2	1932	19	57	6
HC24-RM031	18.00	19.50	RC	2742	289	755	2453	570	1168	145	489	81	148	12	53	7	33	6	14	2	12	2	1709	14	58	7
HC24-RM031	19.50	21.00	RC	2743	291	749	2452	562	1182	146	482	80	148	12	54	7	34	6	15	2	11	2	1648	16	58	6
HC24-RM031	21.00	22.50	RC	2518	265	699	2253	525	1067	134	453	74	133	11	50	7	31	5	14	2	10	2	1520	12	53	8
HC24-RM031	22.50	24.00	RC	2147	223	580	1924	447	926	112	377	62	114	11	41	5	24	5	11	1	9	2	1200	13	46	8
HC24-RM031	24.00	25.50	RC	2203	239	603	1964	457	937	117	388	65	121	11	44	6	27	5	12	2	9	2	1391	11	46	7
HC24-RM031	25.50	27.00	RC	2570	288	713	2282	528	1082	137	457	78	147	11	53	7	34	6	15	2	11	2	1736	17	55	8
HC24-RM031	27.00	28.50	RC	2753	303	771	2450	564	1158	147	496	85	153	12	57	7	36	6	16	2	12	2	1932	17	57	8
HC24-RM031	28.50	30.00	RC	2891	312	809	2579	585	1228	156	523	87	160	12	58	8	35	7	16	2	12	2	1945	15	60	8
HC24-RM031	30.00	31.50	RC	2672	291	741	2381	549	1131	142	479	80	148	12	55	7	33	6	14	2	12	2	1716	14	55	8
HC24-RM031	31.50	33.00	RC	2544	286	706	2258	521	1071	137	453	76	144	12	53	7	33	6	15	2	12	2	1682	15	54	8
HC24-RM031	33.00	34.50	RC	2607	294	728	2313	529	1096	140	469	79	150	12	55	7	33	6	15	2	12	2	1729	13	55	9
HC24-RM031	34.50	36.00	RC	2548	278	700	2270	520	1088	135	450	77	144	10	51	7	31	6	14	2	11	2	1702	14	58	11
HC24-RM031	36.00	37.50	RC	2803	299	771	2504	570	1204	149	497	84	152	12	56	7	34	7	15	2	12	2	1783	17	59	8
HC24-RM031	37.50	39.00	RC	2800	295	775	2505	575	1196	148	500	86	152	11	54	7	34	6	15	2	12	2	1844	15	57	8
HC24-RM031	39.00	40.50	RC	2764	300	771	2464	566	1169	149	498	82	153	12	56	7	35	6	15	2	12	2	1891	15	57	8
HC24-RM031	40.50	42.00	RC	2770	298	771	2472	565	1177	148	498	84	152	12	56	7	34	6	15	2	12	2	1884	16	56	8
HC24-RM031	42.00	43.50	RC	2776	289	769	2487	562	1196	147	498	84	147	11	55	7	33	6	14	2	12	2	1770	14	55	8
HC24-RM031	43.50	45.00	RC	2780	292	774	2488	538	1216	138	514	82	148	12	56	7	33	6	14	2	12	2	1965	19	56	8
HC24-RM031	45.00	46.50	RC	2736	298	761	2438	529	1189	136	503	81	149	12	58	7	34	6	15	2	13	2	1857	22	56	8
HC24-RM031	46.50	48.00	RC	2715	288	758	2427	532	1177	134	502	82	145	11	55	7	33	6	15	2	12	2	1938	22	55	7
HC24-RM031	48.00	49.50	RC	2710	294	758	2416	531	1167	135	503	80	151	12	55	7	33	6	14	2	12	2	1932	22	55	7
HC24-RM031	49.50	51.00	RC	2667	287	742	2380	514	1163	130	492	81	147	11	55	6	33	5	14	2	12	2	1851	20	53	7
HC24-RM031	51.00	52.50	RC	2698	298	753	2400	530	1157	134	499	80	152	11	57	7	33	6	15	2	13	2	1878	19	55	8
HC24-RM031	52.50	54.00	RC	2789	305	775	2484	539	1212	137	511	85	156	11	58	7	35	6	15	2	13	2	1898	21	55	6
HC24-RM031	54.00	55.50	RC	2669	291	742	2378	520	1157	132	489	80	147	11	55	7	34	6	15	2	12	2	1851	20	54	6
HC24-RM031	55.50	57.00	RC	2727	286	757	2441	530	1194	134	502	81	142	11	57	7	33	5	15	2	12	2	1851	21	56	7
HC24-RM031	57.00	58.50	RC	2706	281	747	2425	529	1187	134	496	79	142	12	54	6	32	5	14	2	12	2	1830	22	56	7
HC24-RM031	58.50	60.00	RC	2573	286	710	2287	497	1119	125	468	78	144	12	53	6	33	6	15	2	13	2	1803	21	53	7
HC24-RM031	60.00	61.50	RC	2730	323	753	2407	516	1183	132	496	80	169	11	58	7	38	6	17	2	13	2	1776	23	55	7
HC24-RM031	61.50	63.00	RC	2557	302	713	2255	489	1094	125	469	78	156	12	55	7	34	6	15	2	13	2	1770	19	53	8
HC24-RM031	63.00	64.50	RC	2742	321	773	2421	562	1131	134	516	78	166	13	57	8	37	7	16	2	13	2	1925	19	56	8
HC24-RM031	64.50	66.00	RC	2764	316	768	2448	581	1142	135	511	79	164	13	57	7	36	6	16	2	13	2	1857	18	57	8
HC24-RM031	66.00	67.50	RC	2426	283	673	2143	490	1017	119	449	68	149	12	50	6	31	6	14	2	11	2	1675	18	58	10
HC24-RM031	67.50	69.00	RC	3076	363	868	2713	642	1253	152	576	90	190	13	67	9	41	7	18	2	14	2	2236	21	64	7
HC24-RM031	69.00	70.50	RC	2988	347	846	2641	607	1235	147	566	86	182	13	63	8	39	7	17	2	14	2	2236	21	60	8
HC24-RM031	70.50	72.00	RC	2744	332	782	2412	568	1108	135	519	82	173	13	60	8	38	7	16	2	13	2	2046	21	56	7
HC24-RM031	72.00	73.50	RC	2668	311	752	2357	556	1091	131	503	76	162	13	56	7	35	6	16	2	12	2	1837	18	54	6
HC24-RM031	73.50	75.00	RC	2444	288	682	2156	503	1011	119	454	69	149	14	50	7	33	6	14	2	11	2	1601	19	50	6

DHID	From	To	Sample Type	TREO	HREO	MREO	LREO	La2O3	Ce2O3	Pr6O11	Nd2O3	Sm2O3	Y2O3	Eu2O3	Gd2O3	Tb4O7	Dy2O3	Ho2O3	Er2O3	Tm2O3	Yb2O3	Lu2O3	ZrO2	Sc2O3	ThO2	UO2
HC24-RM031	75.00	76.50	RC	2609	313	727	2296	532	1079	128	483	74	165	13	55	7	35	6	16	2	12	2	1824	18	53	7
HC24-RM031	76.50	78.00	RC	3144	357	886	2787	642	1308	155	590	92	187	13	65	8	41	7	18	2	14	2	2323	21	63	7
HC24-RM031	78.00	79.50	RC	2674	285	744	2389	564	1120	132	498	75	144	14	53	7	32	6	14	2	11	2	1594	17	56	7
HC24-RM031	79.50	81.00	RC	2568	280	717	2288	534	1076	127	478	73	142	13	51	7	32	6	14	2	11	2	1607	17	52	6
HC24-RM032	0.00	1.50	RC	653	124	187	529	119	238	31	121	20	71	5	16	2	13	2	7	1	6	1	1560	17	18	3
HC24-RM032	1.50	3.00	RC	681	121	191	560	130	254	32	124	20	68	5	16	2	13	2	7	1	6	1	1776	18	13	3
HC24-RM032	3.00	4.50	RC	813	232	228	581	121	259	34	139	28	140	6	25	4	23	5	14	2	11	2	2006	20	16	5
HC24-RM032	4.50	6.00	RC	725	207	205	518	106	232	31	124	25	125	5	23	4	21	4	12	2	10	1	1709	18	18	4
HC24-RM032	6.00	7.50	RC	631	176	175	455	97	204	27	106	21	107	5	19	3	18	4	10	1	8	1	1783	18	17	7
HC24-RM032	7.50	9.00	RC	817	229	232	588	121	262	35	142	28	141	4	24	4	23	5	13	2	11	2	1851	20	31	7
HC24-RM032	9.00	10.50	RC	716	174	196	542	118	247	31	123	23	109	4	18	3	16	3	10	1	9	1	1634	17	27	6
HC24-RM032	10.50	12.00	RC	543	228	133	315	69	139	19	71	17	147	1	17	3	23	5	14	2	14	2	488	7	56	7
HC24-RM032	12.00	13.50	RC	420	118	107	302	68	141	17	63	13	74	1	12	2	12	2	7	1	6	1	326	10	54	7
HC24-RM032	13.50	15.00	RC	370	106	94	264	61	121	15	55	12	67	1	10	2	10	2	6	1	6	1	276	11	57	5
HC24-RM032	15.00	16.50	RC	445	135	114	310	70	142	18	67	13	84	2	13	2	14	3	8	1	7	1	434	10	24	4
HC24-RM032	16.50	18.00	RC	928	266	276	662	127	291	40	170	34	160	7	31	5	27	5	15	2	12	2	2654	59	13	5
HC24-RM032	18.00	19.50	RC	971	257	291	714	141	314	43	181	35	152	7	31	5	27	5	14	2	12	2	2661	52	14	7
HC24-RM032	19.50	21.00	RC	3684	430	1045	3254	751	1517	180	695	111	227	11	79	10	49	9	22	3	17	3	2729	40	76	11
HC24-RM032	21.00	22.50	RC	3618	396	1020	3222	754	1505	179	678	106	204	11	74	10	47	8	20	3	16	3	2276	21	78	12
HC24-RM032	22.50	24.00	RC	1863	324	535	1539	331	716	87	344	61	181	10	48	7	36	7	17	2	14	2	2972	52	28	6
HC24-RM032	24.00	25.50	RC	4018	470	1145	3548	830	1640	199	760	119	247	12	86	12	55	10	24	3	18	3	2877	31	76	8
HC24-RM032	25.50	27.00	RC	3153	458	917	2695	600	1241	153	600	101	251	10	76	10	53	10	24	3	18	3	2904	41	55	7
HC24-RM032	27.00	28.50	RC	1372	238	392	1134	247	527	64	251	45	131	8	35	5	27	5	13	2	10	2	1830	29	24	5
HC24-RM032	28.50	30.00	RC	864	205	255	659	138	294	39	157	31	118	6	27	4	24	4	11	1	9	1	1824	17	17	5
HC24-RM032	30.00	31.50	RC	762	147	218	615	129	287	34	139	26	82	5	21	3	16	3	8	1	7	1	2067	20	15	4
HC24-RM032	31.50	33.00	RC	848	181	242	667	139	310	37	151	30	102	5	25	4	20	4	10	1	9	1	2019	17	15	5
HC24-RM032	33.00	34.50	RC	844	178	239	666	138	312	37	150	29	102	5	24	4	19	4	10	1	8	1	2006	20	17	5
HC24-RM032	34.50	36.00	RC	801	164	226	637	135	297	36	141	28	93	5	22	3	18	4	9	1	8	1	2155	22	15	5
HC24-RM032	36.00	37.50	RC	745	152	213	593	124	276	33	134	26	86	4	21	3	17	3	9	1	7	1	2215	22	13	4
HC24-RM032	37.50	39.00	RC	1027	216	294	811	169	377	45	183	37	122	6	30	4	25	5	12	2	9	1	1965	17	21	5
HC24-RM032	39.00	40.50	RC	1479	304	433	1175	230	554	65	272	54	169	7	45	7	35	7	17	2	13	2	3485	27	23	6
HC24-RM032	40.50	42.00	RC	3768	474	1066	3294	724	1572	179	700	119	251	10	85	11	57	10	25	3	19	3	3377	29	72	10
HC24-RM032	42.00	43.50	RC	4187	581	1208	3606	780	1701	199	786	140	309	10	103	14	69	13	31	4	24	4	4066	40	77	11
HC24-RM032	43.50	45.00	RC	2177	264	595	1913	421	934	102	392	64	135	10	47	6	31	6	14	2	11	2	1243	15	46	7
HC24-RM032	45.00	46.50	RC	3246	403	901	2843	636	1364	154	588	101	211	9	73	10	48	9	21	3	16	3	2168	24	74	10
HC24-RM032	46.50	48.00	RC	859	104	195	755	196	377	38	125	19	61	2	14	2	11	2	5	1	5	1	629	13	76	11
HC24-RM032	48.00	49.50	RC	1904	303	522	1601	346	775	87	334	59	168	7	47	7	35	6	16	2	13	2	1313	16	44	9
HC24-RM032	49.50	51.00	RC	1019	268	290	751	151	349	43	170	38	156	3	35	6	33	6	15	2	10	2	856	12	23	6
HC24-RM032	51.00	52.50	RC	953	266	272	687	136	318	40	156	37	156	2	34	6	33	6	16	2	10	1	744	11	22	6
HC24-RM032	52.50	54.00	RC	1021	301	285	720	143	334	41	164	38	180	2	36	6	36	7	18	2	12	2	866	12	24	7
HC24-RM032	54.00	55.50	RC	1099	307	307	792	161	367	44	178	42	182	2	39	6	37	7	18	2	12	2	892	10	24	7

For personal use only

DHID	From	To	Sample Type	TREO	HREO	MREO	LREO	La2O3	Ce2O3	Pr6O11	Nd2O3	Sm2O3	Y2O3	Eu2O3	Gd2O3	Tb4O7	Dy2O3	Ho2O3	Er2O3	Tm2O3	Yb2O3	Lu2O3	ZrO2	Sc2O3	ThO2	UO2
HC24-RM032	55.50	57.00	RC	819	198	221	621	135	292	34	132	28	115	3	25	4	23	5	12	2	8	1	900	10	20	6
HC24-RM032	57.00	58.50	RC	596	140	168	456	95	211	25	104	21	80	5	18	3	15	3	8	1	6	1	1533	17	11	3
HC24-RM032	58.50	60.00	RC	603	107	168	496	109	233	28	106	20	58	5	15	2	12	2	6	1	5	1	1266	16	16	4
HC24-RM032	60.00	61.50	RC	665	148	188	517	108	240	29	117	23	84	5	20	3	16	3	8	1	7	1	1729	18	15	5
HC24-RM032	61.50	63.00	RC	717	160	203	557	116	259	31	127	24	91	5	21	3	18	3	9	1	8	1	1824	19	13	4
HC24-RM032	63.00	64.50	RC	878	218	252	660	133	303	38	153	33	125	6	28	4	24	5	12	2	10	2	1743	19	17	5
HC24-RM032	64.50	66.00	RC	677	137	189	540	116	252	30	120	22	76	5	19	3	14	3	8	1	7	1	1810	18	24	6
HC24-RM032	66.00	67.50	RC	689	136	198	553	116	257	31	125	24	74	6	19	3	15	3	7	1	7	1	2188	21	12	3
HC24-RM032	67.50	69.00	RC	728	147	209	581	120	271	33	132	25	81	6	21	3	16	3	8	1	7	1	2114	21	15	3
HC24-RM032	69.00	70.50	RC	770	187	212	583	124	271	33	129	26	110	4	22	4	20	4	11	2	9	1	1756	19	16	4
HC24-RM032	70.50	72.00	RC	673	194	179	479	103	223	27	103	23	115	4	21	4	22	4	11	2	10	1	1351	12	19	6
HC24-RM032	72.00	73.50	RC	1006	213	292	793	160	369	45	184	35	120	7	29	4	24	4	12	2	10	1	2242	22	16	4
HC24-RM032	73.50	75.00	RC	1246	255	352	991	203	469	56	221	42	146	7	34	5	28	5	14	2	12	2	2337	31	17	5
HC24-RM032	75.00	76.50	RC	1423	300	415	1123	220	527	64	261	51	171	9	40	6	33	6	17	2	14	2	3391	41	15	5
HC24-RM032	76.50	78.00	RC	881	225	255	656	129	301	38	156	32	128	7	29	4	25	5	13	2	10	2	2323	31	11	4
HC24-RM032	78.00	79.50	RC	636	174	184	462	91	209	26	111	25	100	6	22	3	19	4	10	1	8	1	1945	23	9	4
HC24-RM032	79.50	81.00	RC	720	195	203	525	106	241	31	122	25	110	5	27	4	21	4	11	2	10	1	1979	14	13	5