



Pilbara  
Minerals



15 August 2024

# Pilbara Minerals to acquire Latin Resources

To be read in conjunction with ASX  
announcement "Pilbara Minerals to  
acquire Latin Resources" released 15  
August 2024

ASX:PLS



For personal use only

# Important information & disclaimer

## IMPORTANT - You must read the following before continuing

This is a joint presentation (**Presentation**) by Pilbara Minerals Limited (**Pilbara Minerals**) and Latin Resources Limited (**Latin**) dated 15 August 2024. This Presentation has been prepared in relation to the proposed acquisition by Pilbara Minerals of Latin Resources by way of a share scheme of arrangement and option scheme of arrangement under Part 5.1 of the *Corporations Act 2001* (Cth) (**Corporations Act**) (**Latin Schemes**). Under the Latin Schemes, Pilbara Minerals would acquire 100% of the fully paid ordinary shares, and 100% of the options, in Latin Resources in exchange for the issue of fully paid ordinary shares in Pilbara Minerals to Latin Resources shareholders and optionholders. The Latin Schemes are subject to the terms and conditions described in the scheme implementation agreement entered into between Pilbara Minerals and Latin Resources on or about the date of this Presentation (**SIA**). A copy of the SIA is available on the Australian Securities Exchange (**ASX**).

## Summary information

The following notice and disclaimer applies to this Presentation. You are advised to read this “Important Information and Disclaimer” carefully before reading or making any other use of this Presentation or any information contained in this Presentation. By reviewing or retaining these materials, or attending or participating in this Presentation, you acknowledge and represent that you have read, understood and accepted the terms of this “Important Information and Disclaimer”.

This Presentation contains summary information about Pilbara Minerals and Latin Resources and their respective associated entities and activities current as at the date of this Presentation (unless otherwise indicated). This Presentation is for information purposes only. The information in this Presentation is of a general background nature and does not purport to be complete, nor does it contain all the information which prospective investors would require to evaluate an investment in Pilbara Minerals or Latin Resources, nor does it contain all the information which would be required in a prospectus or product disclosure statement prepared in accordance with the Corporations Act. Neither Pilbara Minerals nor Latin Resources is responsible for updating, nor undertakes to update, this Presentation. This Presentation has been prepared by Pilbara Minerals and Latin Resources with due care but no representation or warranty, express or implied, is provided by Pilbara Minerals or Latin Resources in relation to the currency, accuracy, reliability, fairness or completeness of the information, opinions or conclusions in this presentation (whether made by Pilbara Minerals or Latin Resources, or both). This Presentation should be read in conjunction with Pilbara Minerals’ and Latin Resources’ most recent financial report and other periodic and continuous disclosure announcements which are available at [www.asx.com.au](http://www.asx.com.au). The information in this Presentation is based on Pilbara Minerals’ and Latin Resources’ own information and estimates, respectively, and has not been independently verified.

Further information about the Scheme (including key risks for Latin Resources shareholders and optionholders) will be provided by Latin Resources to Latin Resources shareholders and optionholders and released to ASX in due course, in the form of an explanatory statement and notice of meeting (**Scheme Booklet**). The Scheme Booklet will also include or be accompanied by an independent expert’s report that will opine on whether the Latin Schemes are in the best interests of Latin Resources shareholders and optionholders, respectively.

## Not an offer

This Presentation is for information purposes only and is not, and should not be considered as, an offer or solicitation or an invitation or recommendation to subscribe for, acquire or buy securities in Pilbara Minerals or Latin Resources or any other financial products. Neither this Presentation nor any of its contents will form the basis of any contract or commitment. This Presentation is not a prospectus, product disclosure statement or other disclosure document under the Corporations Act, or any other offering document under Australian law or the law of any other jurisdiction (and will not be lodged with the Australian Securities and Investments Commission (**ASIC**) or any foreign regulator).

This Presentation must not be disclosed to any other party and does not carry any right of publication. Neither this Presentation nor any of its contents may be reproduced or used for any purpose without the prior written consent of Pilbara Minerals and Latin Resources.

## Not investment or financial advice

This Presentation, and the information in it, does not constitute financial product, legal, tax or investment advice and is not a recommendation to investors or potential investors. It does not constitute legal, accounting or tax advice. This Presentation, and the information contained within it does not take into account the investment objectives, financial situation or particular needs of any recipient. Before making an investment decision, you should consider the appropriateness of the information having regard to these matters, any relevant offer document and in particular, you should seek independent professional advice that you deem necessary or appropriate before taking any action based on the information contained in this Presentation. Neither Pilbara Minerals nor Latin Resources is licensed to provide financial product advice and do not purport to give advice of any nature.

## Investment risk

An investment in any listed company, including Pilbara Minerals and Latin Resources, is subject to investment and other known and unknown risks, some of which are beyond the control of Pilbara Minerals and Latin Resources, including possible loss of income and capital invested. Pilbara Minerals and Latin Resources do not guarantee any particular rate of return or the performance of Pilbara Minerals or Latin Resources, nor do they guarantee the repayment of capital from Pilbara Minerals or Latin Resources or any particular tax treatment. When making any investment decision, investors should make their own enquires and investigations regarding all information in this Presentation, including but not limited to the assumptions, uncertainties and contingencies which may affect future operations of Pilbara Minerals and Latin Resources, and the impact that different future outcomes may have on Pilbara Minerals and Latin Resources. In respect of the Latin Schemes, investors should carefully consider the information to be made available in the Scheme Booklet (and all other materials issued by Latin Resources in connection with the Latin Schemes) and seek independent advice before making any decision.

## Limitation on information in relation to Pilbara Minerals and its operations

All information in this announcement in relation to Pilbara Minerals and its operations – including in relation to or otherwise derived from historical production, historical costs and cash flows and other financial information, or production or development plans, or infrastructure or production capacity or capability, or any forward-looking statements relating to or extrapolated from any of that information – has been sourced from Pilbara Minerals (**Pilbara Minerals Information**). Subject to the preceding disclaimer, Pilbara Minerals is responsible for the Pilbara Minerals Information, as well as any information in this announcement that is presented on a “merged group” basis (excluding to the extent derived from Latin Resources Information). None of the Latin Resources Parties assume any responsibility for the accuracy or completeness of that information.

## Limitation on information in relation to Latin Resources and its operations

All information in this announcement in relation to Latin Resources and its operations – including in relation to or otherwise derived from historical production, historical costs and cash flows and other financial information, or production or development plans, or infrastructure or production capacity or capability, or any forward-looking statements relating to or extrapolated from any of that information – has been sourced from Latin Resources (**Latin Resources Information**). Subject to the preceding disclaimer, Latin Resources is responsible for the Latin Resources Information. None of the Pilbara Minerals Parties assume any responsibility for the accuracy or completeness of the Latin Resources Information.

# Important information & disclaimer (cont.)

## Effect of rounding

Unless otherwise stated, all dollar values are in Australian dollars (\$). A number of figures, amounts, percentages, estimates, calculations of value and fractions in this Presentation are subject to the effect of rounding. Accordingly, the actual calculation of these figures may differ from the figures set out in this Presentation. All references to financial years appearing in this Presentation are to the financial year ended on 30 June of the indicated year, unless stated otherwise.

## Past performance

Past performance information given in this Presentation is given for illustrative purposes only and should not be relied upon as (and is not) an indication of future performance, including future share price performance. Historical information in this Presentation relating to Pilbara Minerals or Latin Resources is information that has been released to the market. The historical information is presented in an abbreviated form insofar as it does not include all presentation and disclosures, statements or comparative information as required by the Australian Accounting Standards (AAS) and other mandatory professional reporting requirements applicable to general purpose financial reports prepared in accordance with the Corporations Act. For further information, please see past announcements released to the ASX.

## Future performance and forward looking statements

This Presentation contains certain “forward looking statements” about Pilbara Minerals and Latin Resources which involve subjective judgment and analysis and are subject to significant uncertainties, risks and contingencies including those risk factors associated with the mining industry, many of which are outside the control of, change without notice, and may be unknown to Pilbara Minerals or Latin Resources.

These risks and uncertainties include, but are not limited to, liabilities inherent in mine development and production, geological, mining and processing technical problems, the inability to obtain any additional mine licences, permits and other regulatory approvals required in connection with mining and third party processing operations, competition for amongst other things, capital, acquisition of reserves, undeveloped lands and skilled personnel, incorrect assessments of the value of acquisitions, changes in commodity prices and exchange rates, current and interest fluctuations, various events which could disrupt operations and/or the transportation of mineral products, including labour stoppages and severe weather conditions, the demand for and availability of transportation services, the ability to secure adequate financing and management’s ability to anticipate and manage the foregoing factors and risks.

Statements as to timetable and outcome of the Latin Latin Schemes, use of funds, and statements about the plans and strategies of Pilbara Minerals or Latin Resources are forward looking statements, as are statements about market and industry trends, which are based on interpretation of market conditions. Forward looking statements can generally be identified by the use of forward looking words such as “anticipate”, “expect”, “likely”, “propose”, “will”, “intend”, “should”, “could”, “may”, “believe”, “forecast”, “estimate”, “target”, “outlook”, “guidance” and other similar expressions within the meaning of securities laws of applicable jurisdictions and include, but are not limited to, the future performance of Pilbara Minerals or Latin Resources and the outcome and effects of the Latin Latin Schemes and use of proceeds.

No representation, warranty, guarantee or assurance, express or implied, is given or made in relation to any forward looking statement. In particular no representation, warranty or assumption, express or implied, is given in relation to any underlying assumption or that any forward looking statement will be achieved. Actual and future events may vary materially from the forward looking statements and the assumptions on which the forward looking statements were based, because events and actual circumstances frequently do not occur as forecast and future results are subject to known and unknown risks such as changes in market conditions and regulations.

Given these uncertainties, readers are cautioned not to place undue reliance on such forward looking statements, and should rely on their own independent enquiries, investigations and advice regarding information contained in this Presentation. Any reliance by a reader on the information contained in this Presentation is wholly at the reader’s own risk. To the maximum extent permitted by law or any relevant listing rules of the ASX, Pilbara Minerals and Latin Resources and their respective related bodies corporate and affiliates and their respective directors, officers, employees, advisors, agents and intermediaries disclaim any obligation or undertaking to disseminate any updates or revisions to the information in this Presentation to reflect any change in expectations in relation to any forward looking statements or any such change in events, conditions or circumstances on which any such statements were based. Nothing in this Presentation will, under any circumstances (including by reason of this Presentation remaining available and not being superseded or replaced by any other presentation or publication with respect to Pilbara Minerals, Latin Resources or the subject matter of this Presentation), create an implication that there has been no change in the affairs of Pilbara Minerals or Latin Resources since the date of this Presentation.

## Financial data

Investors should be aware that this Presentation contains certain financial information and measures that are “non IFRS financial information” under Regulatory Guide 230: ‘Disclosing non IFRS financial information’ published by ASIC, and are not recognised under AAS and International Financial Reporting Standards (IFRS). The non IFRS financial information financial measures do not have a standardised meaning prescribed by the applicable AAS or IFRS, and therefore, may not be comparable to similarly titled measures presented by other entities, nor should they be construed as an alternative to other financial measures determined in accordance with the applicable AAS or IFRS. Although Pilbara Minerals and Latin Resources believe the non-IFRS financial information and financial measures provide useful information to users in measuring the financial performance and condition of Pilbara Minerals and Latin Resources, investors are cautioned not to place undue reliance on any non-IFRS financial information or financial measures included in this Presentation. Investors should further note that this Presentation contains pro forma and historical financial information. The pro forma and historical financial information provided in this Presentation is for illustrative purposes only and should not be relied upon as, and is not represented as, being indicative of Pilbara Minerals’ or Latin Resources’ future financial condition and/or performance.

## Australasian Code for Reporting Exploration Results, Mineral Resources and Ore Reserves (JORC code)

It is a requirement of the ASX listing rules that the reporting of (amongst other things) exploration results, mineral resources and ore reserves in Australia comply with the JORC Code. Investors outside Australia should note that while the mineral resource and ore reserve estimates of Pilbara Minerals and Latin Resources in this Presentation comply with the JORC Code, they may not comply with the relevant guidelines in other countries and, in particular, do not comply with (i) National Instrument 43-101 (Standards of Disclosure for Mineral Projects) of the Canadian Securities Administrators (the “Canadian NI 43-101 Standards”); or (ii) Item 1300 Regulation S-K, which governs disclosures of mineral reserves in registration statements filed with the SEC. Information contained in this Presentation describing mineral deposits may not be comparable to similar information made public by companies subject to the reporting and disclosure requirements of Canadian or US securities law. You should not assume that quantities reported as “resources” will be converted into reserves under the JORC Code or any other reporting regime or that Pilbara Minerals or Latin Resources will be able to legally and economically extract them.



# Important information & disclaimer (cont.)

## JORC Compliance Statements

### Production targets

#### *Pilbara Minerals*

Information in this Presentation regarding production targets, forecast financial information based on production targets and expansions in nameplate capacity of the Pilgangoora Operation in respect of the P680, P1000 and P2000 projects are underpinned by Pilbara Mineral's existing Ore Reserves that have been prepared by a Competent Person in accordance with the 2012 Edition of the 'Australasian Code for Reporting of Exploration Results, Mineral Resources and Ore Reserves' and were released by Pilbara Minerals to ASX on 24 August 2023 in its release entitled "55Mt increase in Ore Reserves to 214Mt". The relevant proportions of proven Ore Reserves and probable Ore Reserves are 9% proved Ore Reserves and 91% probable Ore Reserves. Pilbara Minerals confirms that all the material assumptions underpinning the production target, and forecast financial information derived from the production target, continue to apply and have not materially changed. Pilbara Minerals confirms it is not aware of any new information or data that materially affects the information included in that release or report and that all material assumptions and technical parameters underpinning the Ore Reserves estimates continue to apply and have not materially changed.

#### *Latin Resources*

Information in this announcement regarding Salinas production targets and forecast financial information based on the Salinas production targets is extracted from Latin Resources' ASX announcement entitled "Robust Results for Colina Lithium Project Preliminary Economic Assessment (PEA)" released to ASX on 28 September 2023 which is available on Latin Resources' website <https://www.latinresources.com.au/> and was based on the Mineral Resource Estimate of 45.2Mt @ 1.32% Li<sub>2</sub>O as at the date of the PEA, which has been subsequently expanded (see Latin Resources' ASX announcement entitled "Colina Lithium Deposit – Mineral Resource Estimate Upgrade" released to ASX on 30 May 2024 (**Salinas MRE Upgrade Announcement**)). Latin Resources confirms that all material assumptions underpinning the production targets, or the forecast financial information derived from the production targets, in the original announcement (save for the expanded Mineral Resource Estimate in the Salinas MRE Upgrade Announcement) continue to apply and have not materially changed. Other than the expanded Mineral Resource Estimate, Latin Resources confirms it is not aware of any new information or data that materially affects the information included in that release or report and that all material assumptions and technical parameters underpinning the Salinas production targets and forecast financial information continue to apply and have not materially changed.

### Ore Reserves and Mineral Resources

#### *Pilbara Minerals*

The information in this Presentation relating to the Mineral Resource Estimate for Pilgangoora is extracted from Pilbara Minerals' ASX announcement entitled "Substantial 109Mt Mineral Resource increase to 414Mt" released to the ASX on 7 August 2023 which is available on Pilbara Minerals' website <https://pilbaraminerals.com.au/>. Pilbara Minerals confirms that it is not aware of any new information or data that materially affects the information included in the original announcement, and that all material assumptions and technical parameters underpinning the estimates in the original announcement continue to apply and have not materially changed. Pilbara Minerals confirms that the form and context in which the competent person's findings are presented have not been materially modified from the original announcement.

#### *Latin Resources*

The information in this announcement relating to the Mineral Resource Estimate for Salinas is extracted from Latin Resources' ASX announcement entitled "Colina Lithium Deposit – Mineral Resource Estimate Upgrade" released to ASX on 30 May 2024 which is available on Latin Resources' website <https://www.latinresources.com.au/>. Latin Resources confirms that it is not aware of any new information or data that materially affects the information included in the original announcement, and that all material assumptions and technical parameters underpinning the estimates in the original announcement continue to apply and have not materially changed. Latin Resources confirms that the form and context in which the competent person's findings are presented have not been materially modified from the original announcement.

## Limitation on Pilbara Minerals Information

All information in this presentation in relation to Pilbara Minerals and its operations – including in relation to or otherwise derived from historical production, historical costs and cash flows and other financial information, or production or development plans, or infrastructure or production capacity or capability, or any forward-looking statements relating to or extrapolated from any of that information – has been sourced from Pilbara Minerals (Pilbara Minerals Information). Subject to the preceding disclaimer, Pilbara Minerals is responsible for the Pilbara Minerals Information, as well as any information in this announcement that is presented on a "merged group" basis (excluding to the extent derived from Latin Resources Information). None of the Latin Resources Parties assume any responsibility for the accuracy or completeness of that information.

## Limitation on Latin Resources Information

All information in this presentation in relation to Latin Resources and its operations – including in relation to or otherwise derived from historical production, historical costs and cash flows and other financial information, or production or development plans, or infrastructure or production capacity or capability, or any forward-looking statements relating to or extrapolated from any of that information – has been sourced from Latin Resources. (Latin Resources Information). Subject to the preceding disclaimer, Latin Resources is responsible for the Latin Resources Information. None of the Pilbara Minerals Parties assume any responsibility for the accuracy or completeness of the Latin Resources Information.

## Acceptance

By attending an investor presentation or briefing, or accepting, accessing or reviewing this Presentation you acknowledge and agree to the terms set out in this "Important Information and Disclaimer".

Authorised to release to the ASX by the respective Boards of Directors of Pilbara Minerals and Latin Resources.



# All share mutually beneficial transaction

For personal use only



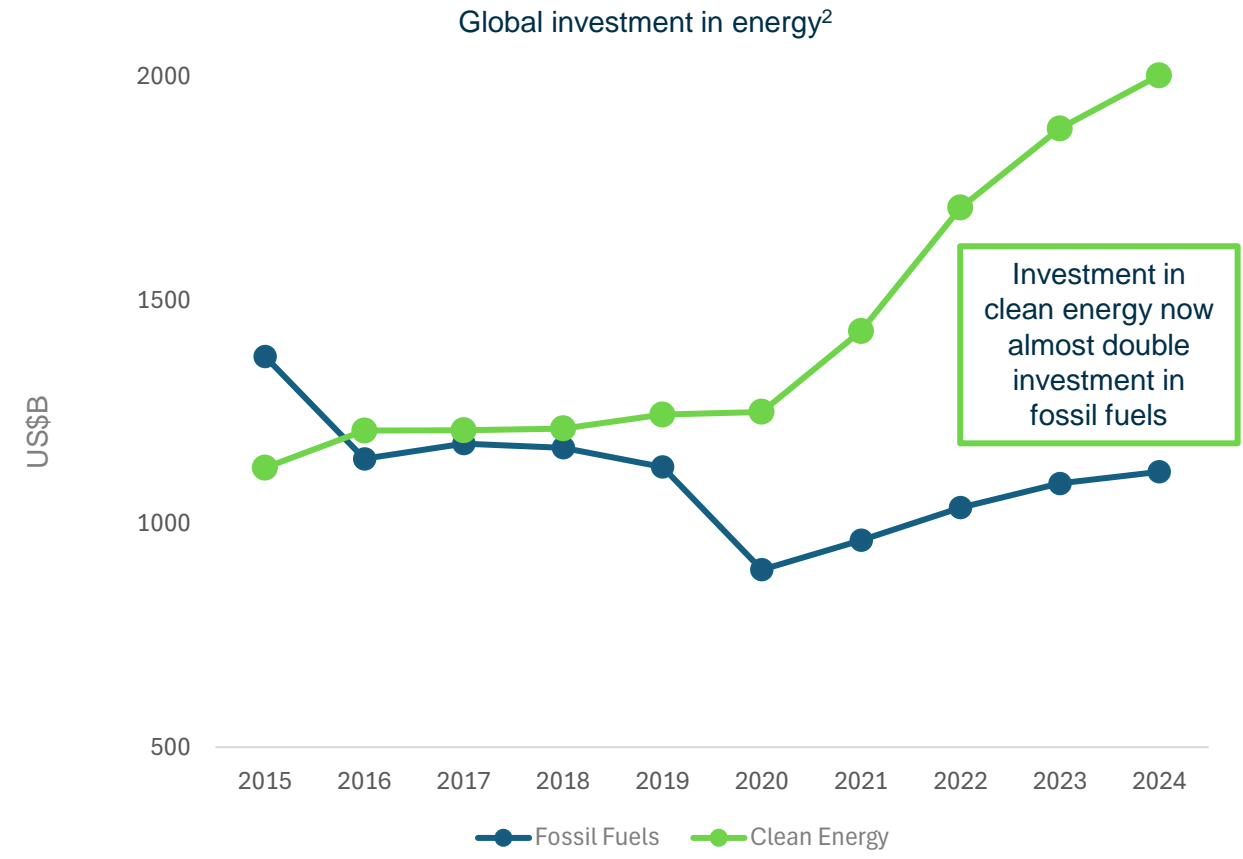
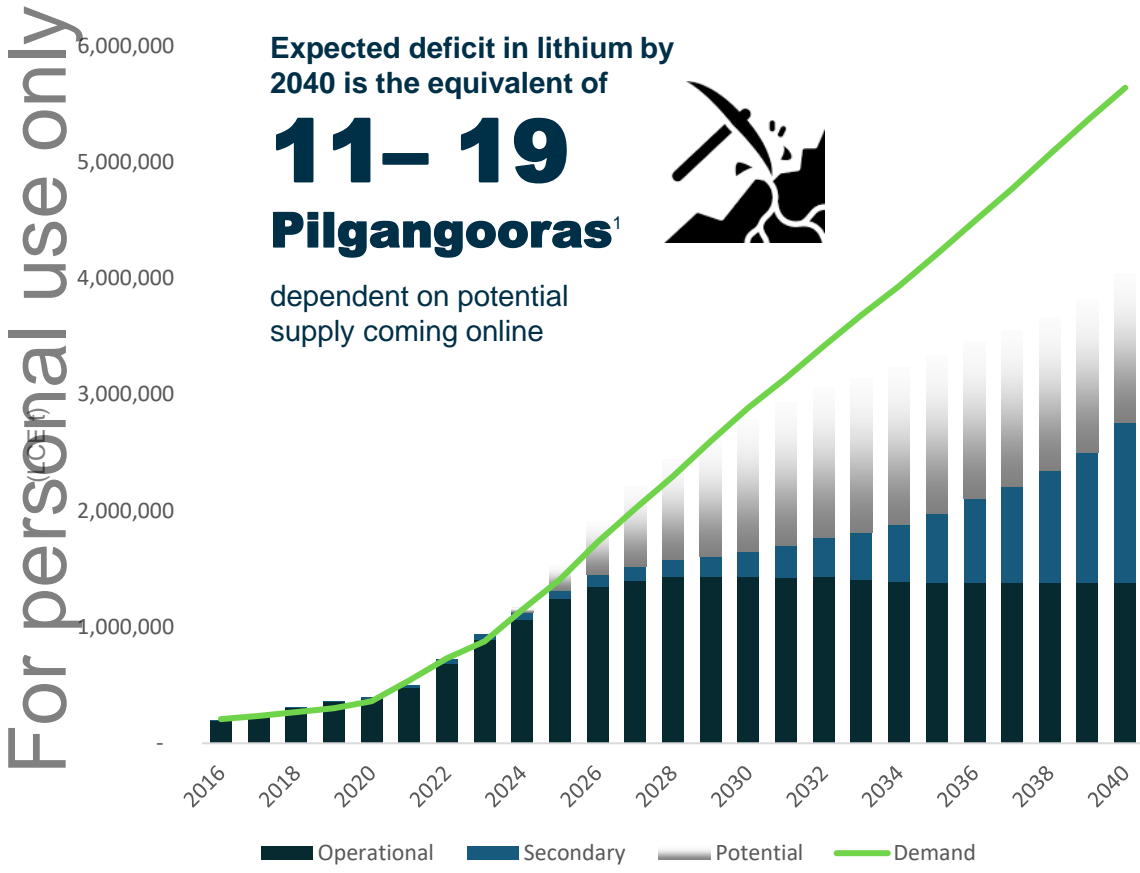
- 1** On-strategy, counter-cyclical transaction to **diversify revenue** beyond Pilgangoora
- 2** Pilbara Minerals **unlocks Salinas' value** by de-risking funding and development
- 3** Expected to be **accretive** to Pilbara Minerals shareholders
- 4** Delivers second **100% owned**, expected **low-cost, Tier 1**, hard-rock lithium asset
- 5** **Optionality** to sequence new supply and **diversify** into growing EU and North American markets
- 6** All share transaction enables Latin Resources shareholder participation while **preserves Pilbara Minerals' balance sheet capacity** and **liquidity**

# Pilbara Minerals' Mission and Strategy

For personal use only

OUR AMBITION	<p>To be a leader in the provision of sustainable battery materials products</p>			
STRATEGIC PILLARS	<p><b>Operate</b></p> <p>Deliver our operating performance commitments</p>	<p><b>Grow</b></p> <p>Achieve full potential of the Pilgangoora asset</p>	<p><b>Chemicals</b></p> <p>Extract greater value along the battery materials supply chain</p>	<p><b>Diversify</b></p> <p>Diversify revenue beyond the Pilgangoora asset</p>

# Strong demand for lithium driven by clean energy solutions



<sup>1</sup> Source: Benchmark Mineral Intelligence 2024. June Quarter 2024 data. Assumed Pilgangoora production of 1 Mtpa SC6eq, or 60 kt of contained Li<sub>2</sub>O which has been converted to LCE at a 2.473 conversion factor (148 ktpa LCE). The range of '11-19 Pilgangooras' is determined by the amount of lithium supply available, 19 representing the difference between Demand and the sum of Operational and Secondary supply, and 11 representing the difference between Demand and the sum of Operational, Secondary and Potential supply. Operational includes operational supply, brownfields expansions and assets on care & maintenance. Secondary includes "Recycling | Global Supply". Potential includes projects that are categorised as "Highly Probable", "Probable" or "Possible". Refer to "production targets" section on slide 4 for further information.

<sup>2</sup> IEA 2024; Global investment in clean energy and fossil fuels, 2015-2024. Clean energy includes renewable power, grids and storage, energy efficiency and nuclear

# Transaction summary

For personal use only

<b>Transaction structure</b>	<ul style="list-style-type: none"> <li>Pilbara Minerals to acquire 100% of Latin Resources by way of a scheme of arrangement (<b>Scheme</b>)<sup>1</sup></li> </ul>
<b>Transaction consideration and pro-forma ownership</b>	<ul style="list-style-type: none"> <li>Each Latin Resources shareholder will receive 0.07 new Pilbara Minerals shares for each Latin Resources share held</li> <li>Upon implementation of the Scheme, existing Pilbara Minerals shareholders will own ~93.6% and Latin Resources shareholders will own the remaining ~6.4% of the enlarged Pilbara Minerals</li> </ul>
<b>Transaction premia</b>	<ul style="list-style-type: none"> <li>Based on Pilbara Minerals' closing price of A\$2.85 per share on 14 August 2024, the transaction implies a value of ~A\$0.20 per Latin Resources share, which represents a: <ul style="list-style-type: none"> <li>– 57% premium to Latin Resources' 10-day volume weighted average price (<b>VWAP</b>) of ~A\$0.127 per share; and</li> <li>– 32% premium to Latin Resources' 30-day VWAP of ~A\$0.151 per share</li> </ul> </li> </ul>
<b>Board recommendation and voting intentions</b>	<ul style="list-style-type: none"> <li>The Latin Resources Board has unanimously recommended the Scheme in the absence of a Superior Proposal (as defined in the Scheme Implementation Agreement) emerging and subject to an independent expert concluding (and continuing to conclude) that the Scheme is in the best interests of Latin Resources shareholders</li> <li>All directors of Latin Resources (who together hold 4.8% of Latin Resources' total issued shares) have confirmed their intention to vote in favour of the Scheme, subject to those same qualifications</li> <li>Latin Resources' largest shareholder Jose Luis Manzano (7.9%) has confirmed his intention to vote in favour of the Scheme in the absence of a Superior Proposal emerging and subject to an independent expert concluding (and continuing to conclude) that the Scheme is in the best interests of Latin Resources shareholders</li> </ul>
<b>Conditions and indicative timing</b>	<ul style="list-style-type: none"> <li>The Scheme is subject to certain conditions, including an independent expert concluding (and continuing to conclude) that the Scheme is in the best interests of Latin Resources shareholders, customary conditions including no material adverse change or prescribed events occurring in respect of either Pilbara Minerals or Latin Resources, approval by Latin Resources shareholders at a Scheme Meeting, completion of a Latin Resources shareholder-approved in-specie distribution of all of Latin Resources' non-core assets (which predominantly consist of immaterial tenement interests in Peru, Argentina and Australia), and the requisite Court approvals</li> <li>Scheme booklet is expected to be dispatched to Latin Resources shareholders in mid-October 2024, ahead of a Scheme meeting in mid-November 2024</li> <li>Exclusivity obligations (including "no shop, no talk" provisions, matching right regime) and mutual break fees apply</li> </ul>
<b>Latin Resources team</b>	<ul style="list-style-type: none"> <li>Latin Resources' Managing Director, Chris Gale, has agreed to join as a consultant to Pilbara Minerals for a period of 12 months to provide leadership continuity and help streamline integration post implementation of the Scheme</li> <li>Pilbara Minerals will also retain other key members of the Latin Resources team to leverage their existing project knowledge and local relationships</li> </ul>

1. Latin Resources' options are subject to a stand-alone Option Scheme



# On-strategy transaction

Counter-cyclical transaction which benefits both shareholder groups – Pilbara Minerals intends to align future development and production in response to market conditions



## Pilbara Minerals' inorganic growth strategy drivers



### Competitive advantage – hard-rock lithium

- Single open-pit operation with high-grade, coarse-grained spodumene
- At a development stage which allows Pilbara Minerals to leverage its technical expertise to further optimise and add value



### Value creation

- Accretive transaction across a range of metrics, including NAV, Mineral Resources and expected production<sup>1</sup>
- Pilbara Minerals unlocks Salinas' value by de-risking funding and development risk



### Geopolitical / jurisdictional considerations

- Minas Gerais is a well established, pro-mining jurisdiction
- Supportive local government
- Strategically located close to North American and European battery markets



### ESG considerations

- Hydro-backed power grid
- Well-established social frameworks in the region
- Dry-stacked tailings
- Strong existing government and community support



### Asset quality and speed to market

- Potential to be a top 10 hard-rock spodumene operation by production capacity globally
- Expected low-cost base
- Near-term production optionality (subject to market conditions, customer requirements and funding)

1. Salinas target steady state production rate of 405ktpa SC5.5 plus 123ktpa SC3.0 (combined average of 499ktpa SC5.2 equivalent). Actual production rates and cost position are subject to Salinas DFS outcomes and FID which are also dependent on market conditions. For more information see Latin Resources' ASX announcement "Robust results for Colina Lithium Project PEA" released to the ASX on 28 September 2023. For Pilbara Minerals, based on P1000 10-year average production rate, excluding potential P2000 expansion, of 1,060ktpa SC5.2. For more information see Pilbara Minerals' ASX announcement "Study Delivers 2MTPA Expansion Option – Highly Accretive" released to the ASX on 21 June 2024. Refer to the "production targets" section on slide 4 for further information.

For personal use only

# LATIN RESOURCES at a glance

Latin Resources' Salinas Lithium Project (Salinas) is an advanced stage, Tier 1, hard-rock lithium development project located in an attractive mining jurisdiction

### Location

- Located in Lithium Valley, in the State of Minas Gerais, Brazil
- Well-established Tier 1 mining jurisdiction

### Production

- Potential to become a **top 10 hard-rock lithium asset** by production globally (ex. Africa)

### Project status

- Preliminary Economic Assessment (PEA) completed by Latin Resources in Sep. 2023<sup>1</sup>
- Definitive Feasibility Study (DFS) underway

### Operating costs

- Operating costs expected to be competitive against Pilgangoora

### Mineral Resource<sup>2</sup>

- Large existing Salinas Mineral Resource of **77.7Mt @ 1.24% Li<sub>2</sub>O<sup>2</sup>**
- >85% Measured and Indicated<sup>2</sup>

### Capital expenditure

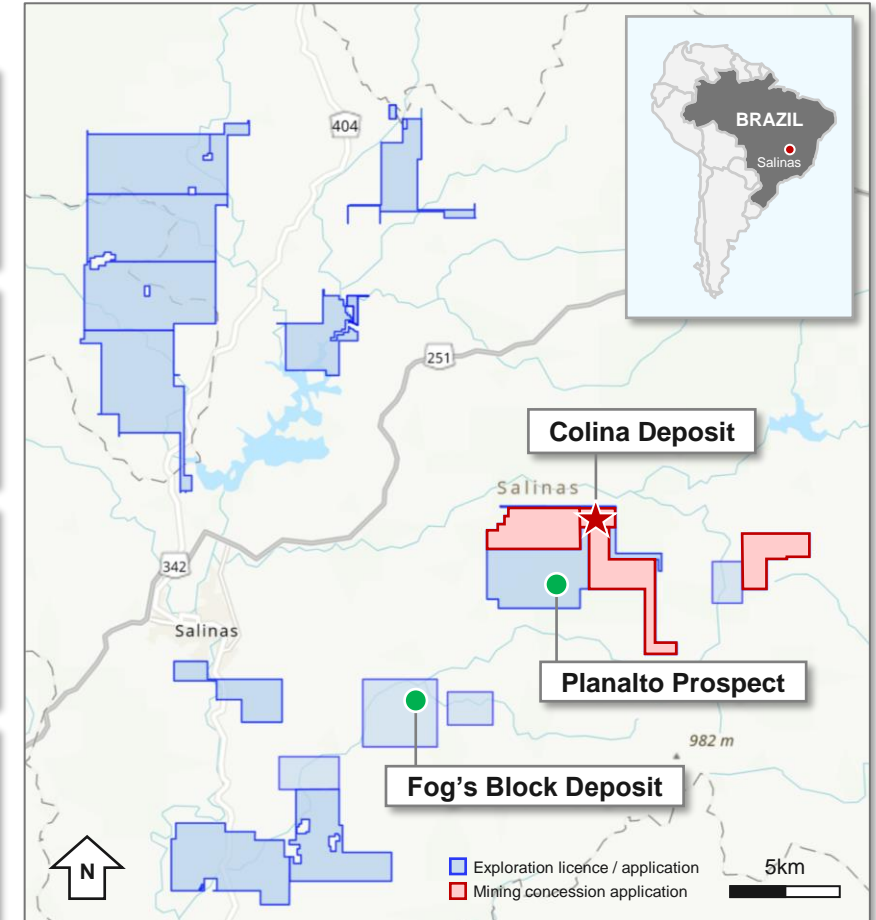
- Upfront Stage 1 capex expected to be **US\$253m** to first production based on Latin Resources' PEA<sup>1,3</sup>

### Mine life

- PEA defined an initial mine life of 11 years<sup>1</sup>
- **Resource upgrade of ~60%<sup>2</sup>** since PEA

### Access and infrastructure

- Located ~10km from Salinas regional centre
- Site well serviced by infrastructure, hydro-backed grid, water and roads



1. For more information refer to Latin Resources' ASX announcement "Robust results for Colina Lithium Project preliminary economic assessment" dated 28 September 2023. Latin Resources' PEA was based on a Mineral Resource Estimate of 45.2Mt @ 1.32% Li<sub>2</sub>O. Refer to: (i) the "Ore Reserves and Mineral Resources" section on slide 4; (ii) the "Latin Resources Mineral Resource" slide 32; and (iii) the "production targets" section on slide 4 for further information.  
 2. For more information refer to Latin Resources' ASX announcement "Colina Lithium Deposit – Mineral Resource Estimate Upgrade" dated 30 May 2024. Refer to: (i) the "Ore Reserves and Mineral Resources" section on slide 4; and (ii) the "Latin Resources Mineral Resource" slide 32 for further information.  
 3. Based on Latin Resources' PEA and Stage 1 throughput of 1.5Mtpa. Stage 2 capex to achieve throughput of 3.6Mtpa was estimated to be an additional US\$55m.

For personal use only

# Benefits to Latin Resources shareholders

**A** Immediate upside through the delivery of an **attractive premium** to recent trading prices in Latin Resources

**B** Ongoing **exposure to the development of Salinas** through holding shares in Pilbara Minerals

**C** Salinas **funding and development risk significantly mitigated** and **value unlocked** given access to Pilbara Minerals' balance sheet and proven technical and development expertise

**D** Become part of an **ASX-50 company** with an enhanced capital markets profile and trading liquidity

**E** Exposure to the **world's largest pure-play hard-rock lithium producer** with a Tier 1 project in a highly attractive jurisdiction

**F** Access to Pilbara Minerals' **lithium mining and processing intellectual property and expertise**, including the potential to leverage midstream technology

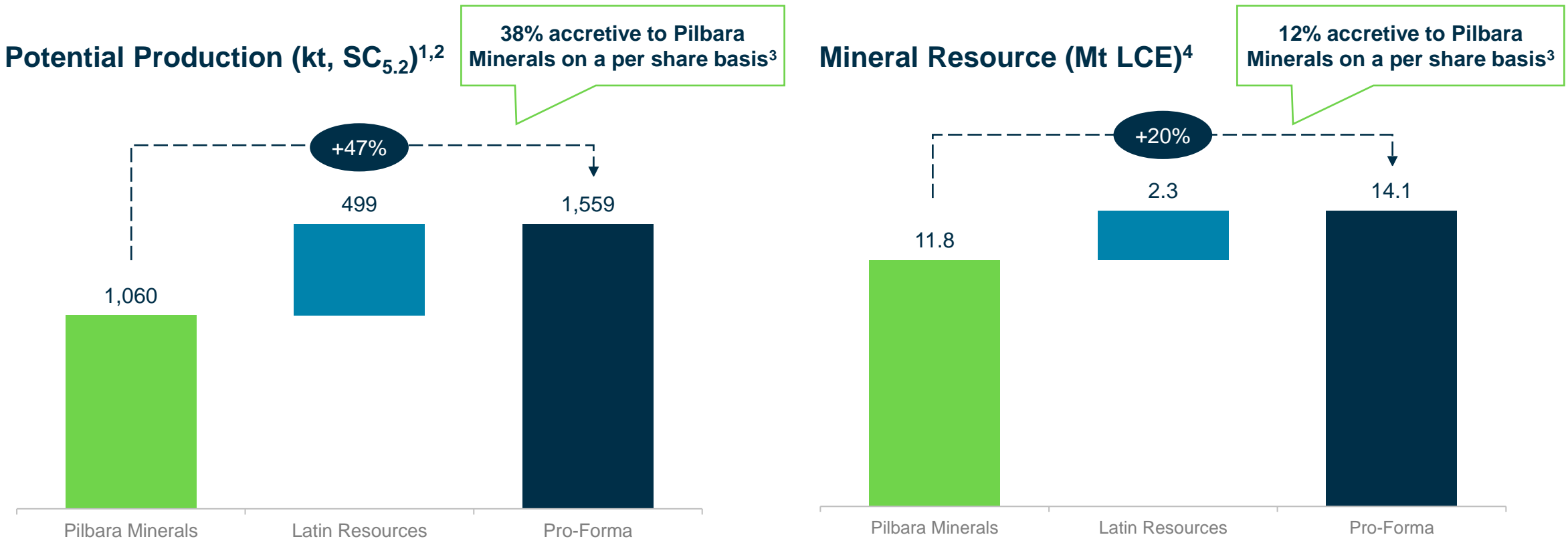
# Strategic rationale for Pilbara Minerals

- 1 **On-strategy, counter-cyclical transaction** expected to be **accretive** across a range of key metrics
- 2 **Diversification of current operations** by adding a second potential operating platform in an emerging lithium region
- 3 **Continued exposure to Tier 1 assets** through the addition of another high quality, expected low-cost project of meaningful scale
- 4 Potential **near-term production optionality** from Salinas, underpinned by a **fast-tracked permitting** process and **pro-mining government**
- 5 **Attractive hard-rock operation** which enables Pilbara Minerals to leverage its proven technical expertise to de-risk development and optimise
- 6 **Market diversification** with exposure to the growing **North American** and **European battery markets**
- 7 **All share transaction structure** preserves Pilbara Minerals' **strong net cash and liquidity position** to ensure it remains well capitalised to fund its significant growth pipeline when market conditions support

For personal use only

# 1 On-strategy, accretive transaction

Salinas has the potential to contribute up to ~30% of pro-forma production at Salinas' steady state production levels at a cost base that is expected to be competitive against Pilgangoora<sup>1</sup>

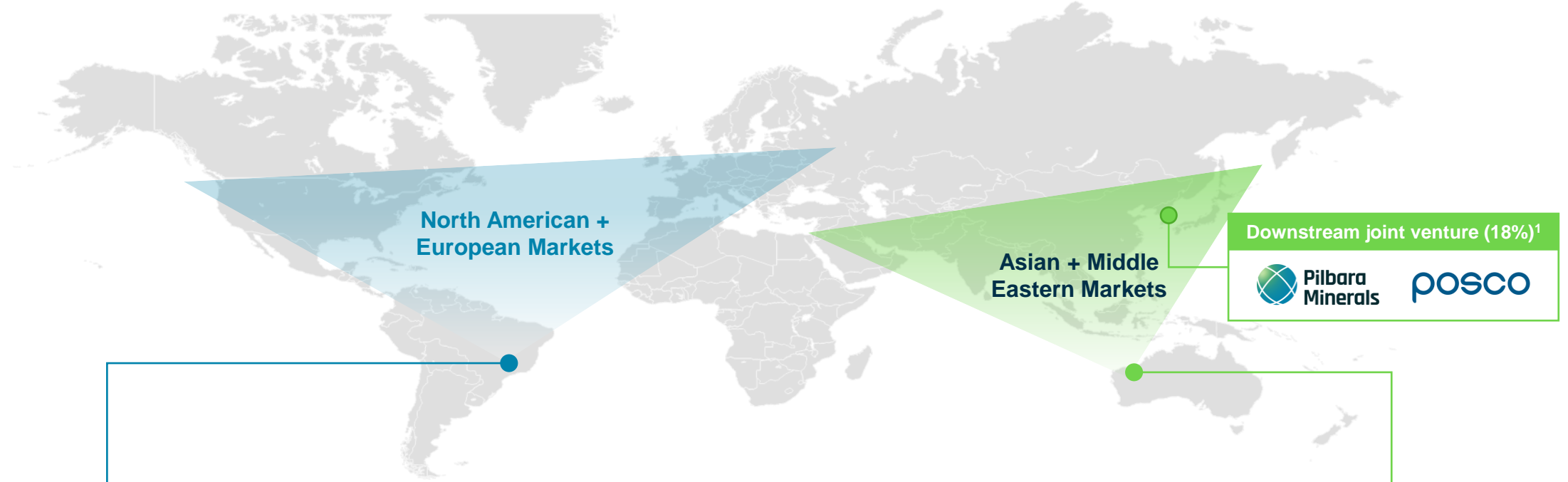


1. Based on Pilbara Minerals P1000 10-year average production rate (excluding potential P2000 expansion). ~21% contribution to pro-forma production based on P2000 production. For more information refer to Pilbara Minerals' ASX announcement "Study Delivers 2MTPA Expansion Option - Highly Accretive" dated 21 June 2024. See the "production targets" section on slide 4 for further information.  
 2. Salinas target steady state production rate of 405ktpa SC5.5 plus 123ktpa SC3.0 (combined average of 499ktpa SC5.2 equivalent). Actual production rates and cost position are subject to Salinas DFS outcomes and FID which are also dependent on market conditions. For more information see Latin Resources' ASX announcement "Robust results for Colina Lithium Project PEA" released to the ASX on 28 September 2023 and the "production targets" section on slide 4.  
 3. Based on 3,010.9 million Pilbara Minerals ordinary shares on issue pre-transaction vs 3,216.4 million shares post-transaction.  
 4. Refer to: (i) "Ore Reserves and Mineral Resources" section on slide 4; (ii) the "Pilgangoora Mineral Resource and Ore Reserve" slide 33; and (iii) the "Latin Resources Mineral Resource" slide 32 for further information.



For personal use only

## 2 Diversification of current operations



### Salinas (100%)

- LOM avg. production ~499ktpa (SC<sub>5.2</sub>)<sup>2</sup>
- +10 years<sup>3</sup>
- PEA study
- DMS (Stage 1)
- Reserve NA
- Resource 2.3Mt LCE
- DFS underway

### Pilgangoora (100%)

- LOM avg. production ~1,060ktpa (SC<sub>5.2</sub>)<sup>4</sup>
- 34 years<sup>4</sup>
- Producing
- DMS & Float
- Reserve 6.3Mt LCE
- Resource 11.8Mt LCE
- P2000 expansion option

1. Pilbara Minerals has the option to increase its ownership in the POSCO JV to 30%. For more information refer to Pilbara Minerals' ASX announcement "Pilbara Minerals Finalises Agreements for POSCO DSJV " dated 26 October 2021.

2. Salinas target steady state production rate of 405ktpa SC5.5 plus 123ktpa SC3.0 (combined average of 499ktpa SC5.2 equivalent). Actual production rates and cost position are subject to Salinas DFS outcomes and FID which are also dependent on market conditions. For more information see Latin Resources' ASX announcement "Robust results for Colina Lithium Project PEA" released to the ASX on 28 September 2023 and the "production targets" section on slide 4.

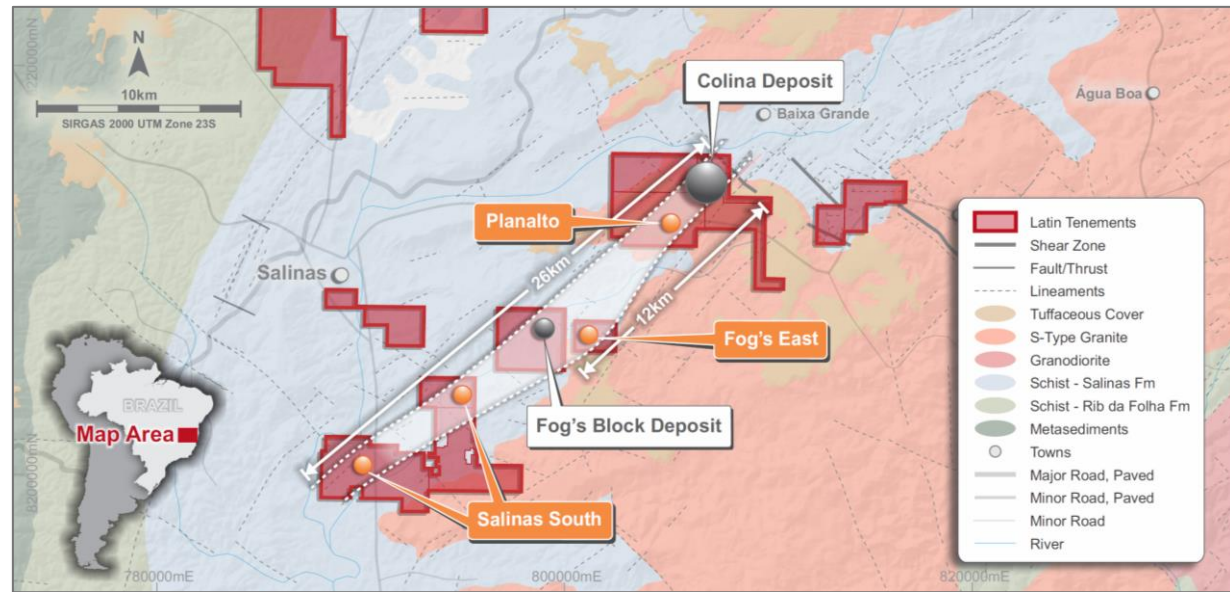
3. Latin Resources' PEA announced on 28 September 2023 had a mine life of 11 years however this was based on a significantly smaller Mineral Resource than the upgraded Mineral Resource Estimate announced by Latin Resources on 30 May 2024. Latin Resources' Mineral Resource Estimate announced on 30 May 2024 of 77.7Mt @ 1.24% Li<sub>2</sub>O demonstrates scope for significant mine life expansion beyond 11 years. See the "production targets" section on slide 4 for further information.

4. Based on P1000 10-year average production rate, excluding potential P2000 expansion, of 1,060ktpa SC5.2. For more information see Pilbara Minerals' ASX announcement "Study Delivers 2MTPA Expansion Option – Highly Accretive" released to the ASX on 21 June 2024 and the "production targets" section on slide 4.

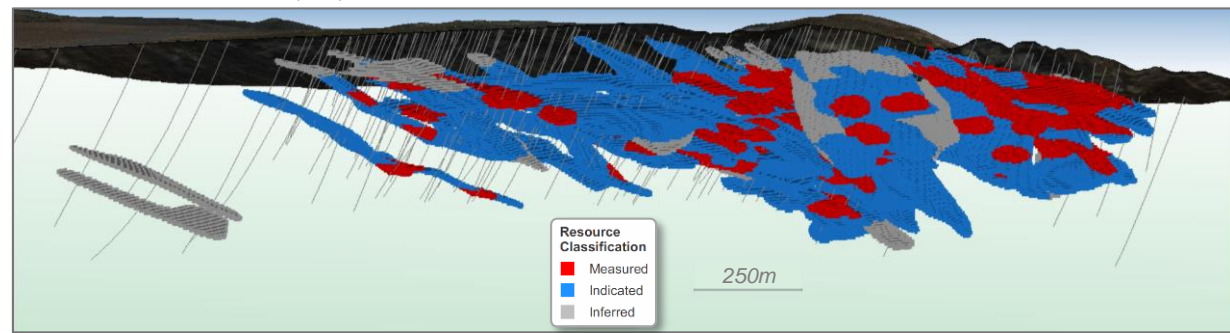
For personal use only

# 3 Continued exposure to Tier 1 assets...

Salinas is one of the world's largest undeveloped hard-rock lithium deposits and the largest in Brazil



Location of Colina and other prospects at Salinas

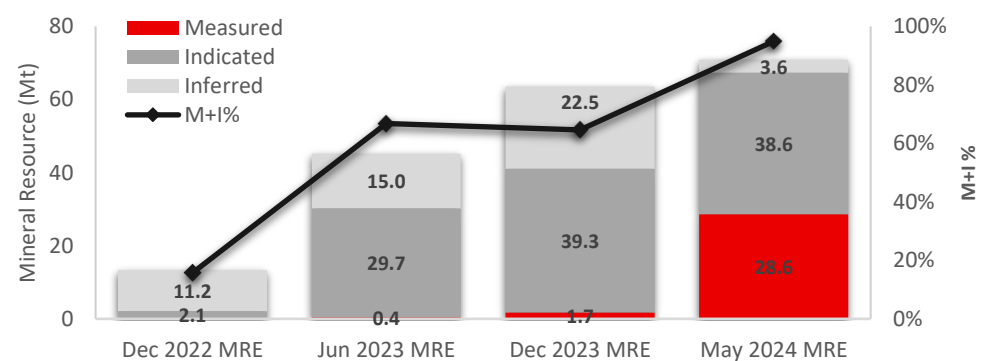


Cross section of the Colina deposit, colored by Resource category

## Colina deposit Mineral Resource

- Total of 297 diamond drill holes for 98,958m have been incorporated into the MRE
- 70.9Mt @ 1.25% Li<sub>2</sub>O total M,I&I Resource at Colina<sup>1</sup>
- 95% or 67.3Mt classified into the JORC Measured + Indicated categories
- Mineral Resource remains open at depth and along strike, providing additional resource growth potential

## Colina Mineral Resource growth<sup>1</sup>

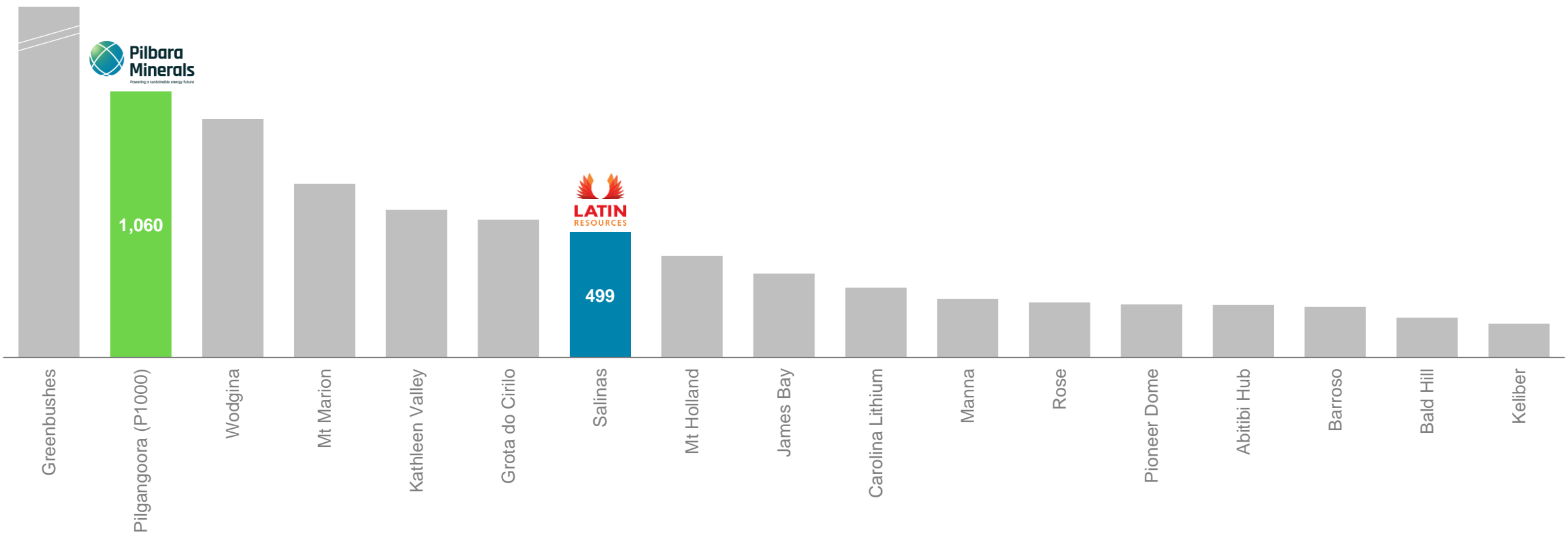


1. For more information refer to Latin Resources' ASX announcement "Colina Lithium Deposit – Mineral Resource Estimate Upgrade" dated 30 May 2024. Refer to: (i) the "Ore Reserves and Mineral Resources" section on slide 4; and (ii) the "Latin Resources Mineral Resource" on slide 32 for further information.

# 3 ... with top 10 production potential

Select hard-rock lithium projects production (ex. Africa, SC<sub>5.2</sub>)<sup>1,2,3,4</sup>

For personal use only



1. Select hard-rock lithium projects which have conducted at least a PEA or Scoping Study. Capacity refers to current installed production capacity, and where not available, average annual production. Where an existing producer or developer has planned expansions, and FID has been reached then the expanded capacity is used.

2. Based on P1000 10-year average production rate, excluding potential P2000 expansion, of 1,060ktpa SC5.2. For more information see Pilbara Minerals' ASX announcement "Study Delivers 2MTPA Expansion Option – Highly Accretive" released to the ASX on 21 June 2024 and the "production targets" section on slide 4.

3. Salinas target steady state production rate of 405ktpa SC5.5 plus 123ktpa SC3.0 (combined average of 499ktpa SC5.2 equivalent). Actual production rates and cost position are subject to Salinas DFS outcomes and FID which are also dependent on market conditions. For more information see Latin Resources' ASX announcement "Robust results for Colina Lithium Project PEA" released to the ASX on 28 September 2023 and the "production targets" section on slide 4.

4. Refer to the "supporting data: select hard-rock lithium project production capacity" slide 34.

For personal use only

# 4 In an attractive national mining jurisdiction...

Minas Gerais is Brazil's 3<sup>rd</sup> largest economy and host to 300+ operating mines

## Brazil mining sector overview<sup>1</sup>

### Revenue

~US\$45 billion per annum<sup>2</sup>

### Minerals produced

>90 commodities

### Taxes & tributes

~US\$15 billion per annum<sup>2</sup>

### Companies

>7,300

### Jobs

>204 thousand direct and  
~2.25 million indirect

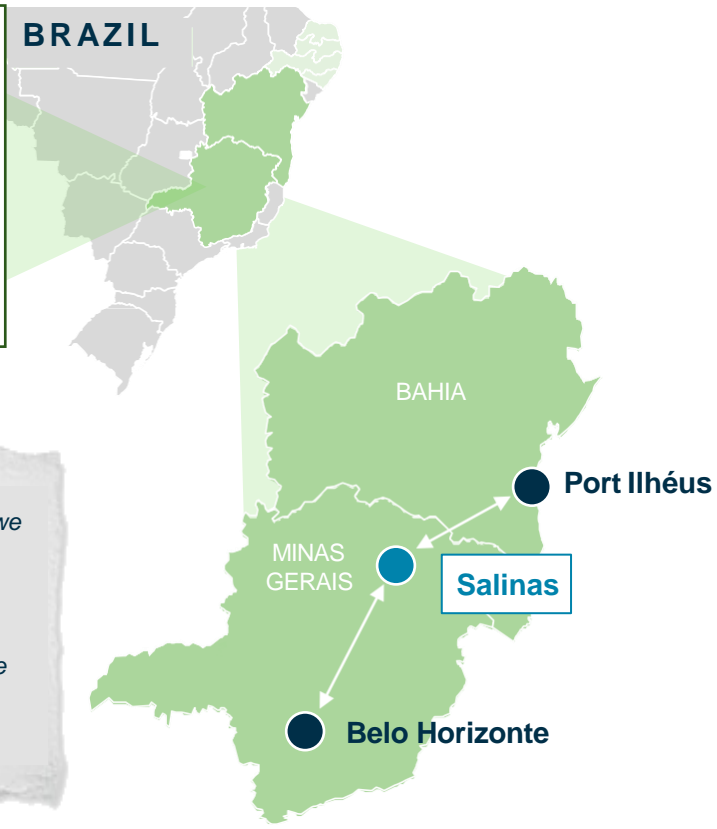
### Investment

US\$50 billion from 2023  
to 2027

## Minas Gerais is a pro mining State



Legend:   Minas Gerais     Other Brazil States



*"In addition to being a supplier of critical minerals and a diversified economic hub, in Minas Gerais we want to make life easier for those who work, and that's what the state government is doing. By creating an environment that makes investment immune to political interference we work to instill trust in investors that in Mining State, the rules are followed, and those who make business in Minas Gerais will be rewarded swiftly"*

- Minas Gerais State Governor, Romeu Zema









1. Statistics sourced from Global Business Reports available at <https://www.gbreports.com/publication/brazil-mining-2023>.  
2. Converted from Brazilian Real to USD at USD:BRL of 5.49.

For personal use only

# 4 ...in a pro mining state...

## Pilbara Minerals' assessment of Minas Gerais vs. Western Australia



	 Minas Gerais	 Western Australia
# of operating mines <sup>1</sup>	300+	134
# of operating lithium mines <sup>2</sup>	3	8
Power	Hydro-backed grid	Grid, gas, diesel & renewables
Corporate tax rate <sup>3</sup>	15%	30%
Government royalty	2%	5%
Capex and opex		
Permitting timelines		
Access to skilled labour		
Proximal markets	North America and Europe	Asia and Middle East

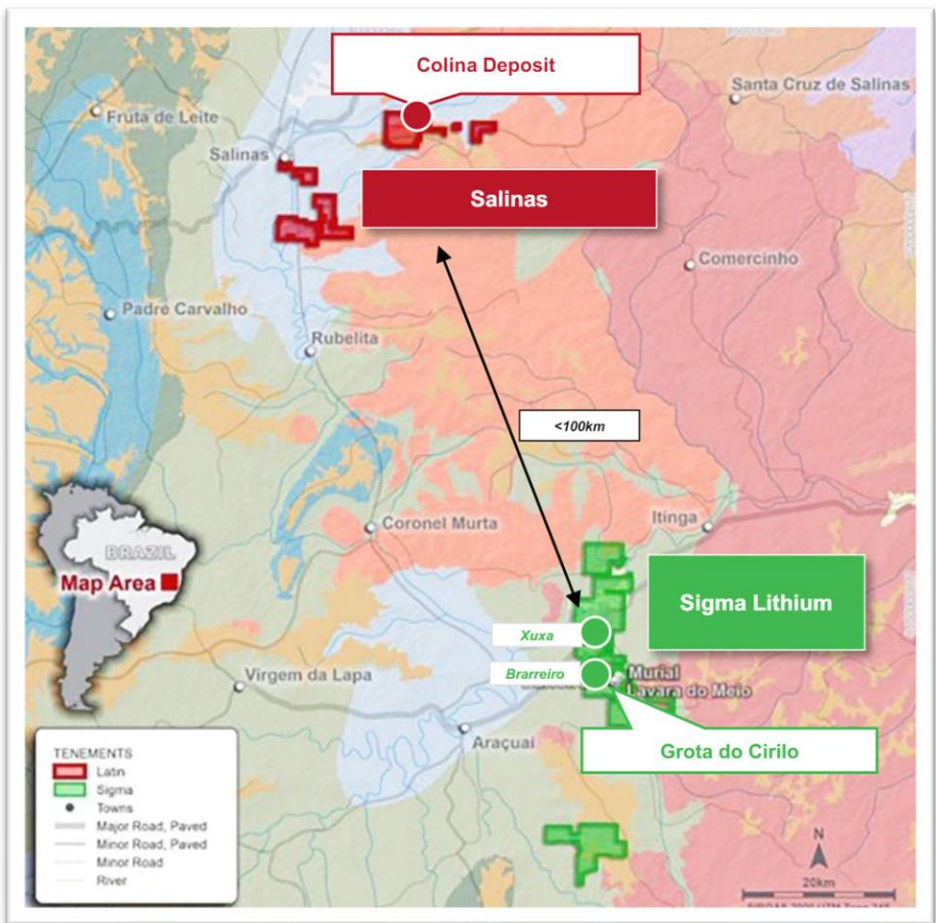
1. Minas Gerais sourced from: <https://www.spglobal.com/marketintelligence/en/news-insights/latest-news-headlines/brazil-s-minas-gerais-lures-lithium-investments-with-fast-permitting-74946198>.  
 Western Australia (as at 2023) sourced from: <https://www.dmp.wa.gov.au/About-Us-Careers/Latest-Resources-Investment-4083.aspx>.  
 2. Minas Gerais includes: Companhia Brasileira de Lítio, Grota do Cirilo and Mibra. Western Australia includes: Greenbushes, Pilgangoora, Wodgina, Mt Marion, Mt Holland, Bald Hill, Kathleen Valley and Mt Cattlin.  
 3. Minas Gerais reflects Sudene tax benefit (15.25% corporate tax rate) for developing regions within Brazil.



For personal use only

# 4 ...with established infrastructure...

## Salinas project location



### Roads

- Site serviced by industrial corridors
- Mature trucking industry
- Sealed roads to site



### Power

- Hydro-backed power grid
- Aimorés Hydro facility services Salinas
- No PPA required
- Favourable electricity costs



### Water

- Sustainable water supply from proximal Salinas Dam
- Dry stack tailings



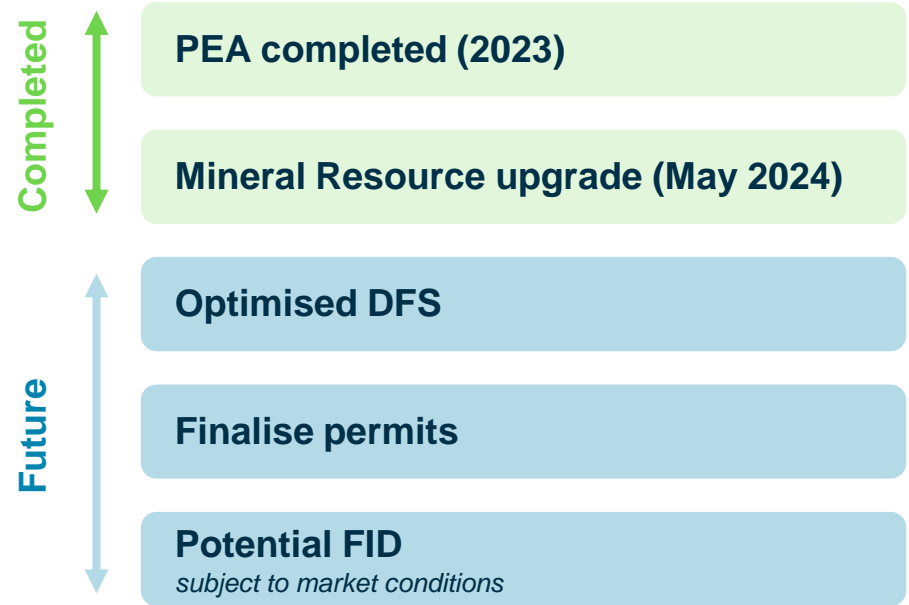
### Port

- Export port: Ilhéus Port
- Bulk export facility in Brazil
- ~520km from Salinas
- Pilbara Minerals team has inspected

For personal use only

# 4 ... providing near-term production optionality

## Salinas project status



Timing of the optimised DFS will be advised to shareholders as soon as practical

## Sigma Lithium – Grota do Cirilo Phase 1 case study



Salinas will benefit from the second mover advantage and can apply key learnings from Sigma Lithium which was able to complete construction and commissioning within ~16 months

# 5 Attractive hard-rock operation

Pilbara Minerals will leverage its significant in-house technical expertise to de-risk development and optimise Salinas to create additional value

## Mining

- Single open pit, hard-rock mine
- Drill, blast and haul operation
- Skilled local labour force and mining contractors with proven expertise

## Processing

- Coarse-grained spodumene
- Stage 1 producing a DMS product
- Potential to blend in or upgrade secondary product to increase overall recoveries
- Dry-stacked tailings

## Shipping and marketing

- Year-round access to and from site via existing public and private roads
- Paved, ~520km road to Ilhéus Port (bulk export port in Brazil)
- Unrestricted trade of lithium products from Brazil
- Strong offtake interest with no current commitments

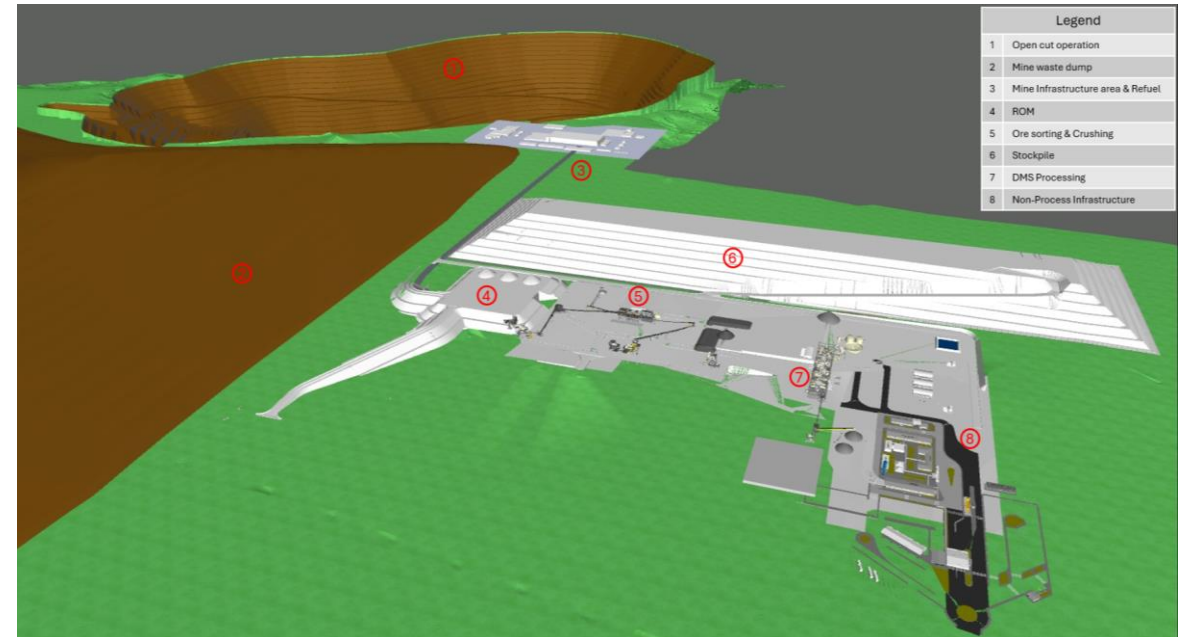


Image: Indicative Salinas open pit and infrastructure layout provided by Latin Resources. To be optimised as part of the ongoing DFS

For personal use only

# 6 Exposure to key battery markets

Salinas' strategic location and uncommitted offtake will enhance Pilbara Minerals' opportunity to diversify into the growing North America and European battery markets

● Total battery demand expected to grow from 877 GWh pa in 2024 to 2,979 GWh pa by 2030 ●

### US & Canada

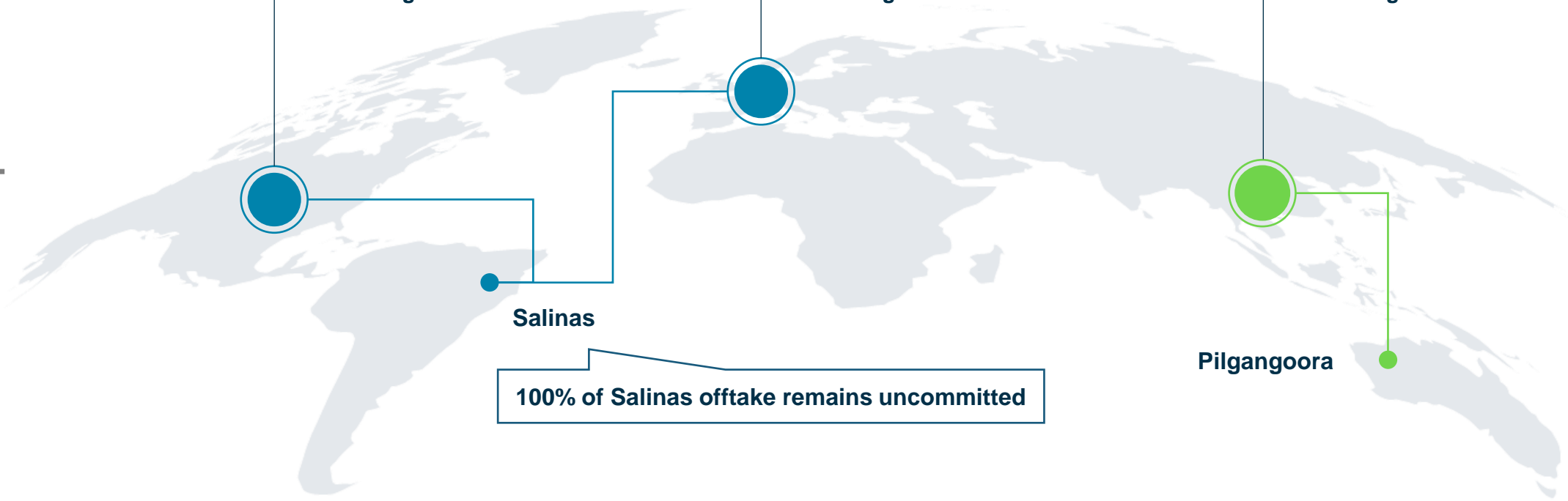
- 24% of 2030 battery demand
- Growing at ~32% CAGR to 2030

### Europe & UK

- 26% of 2030 battery demand
- Growing at ~27% CAGR to 2030

### Asia Pacific

- 45% of 2030 battery demand
- Growing at ~17% CAGR to 2030

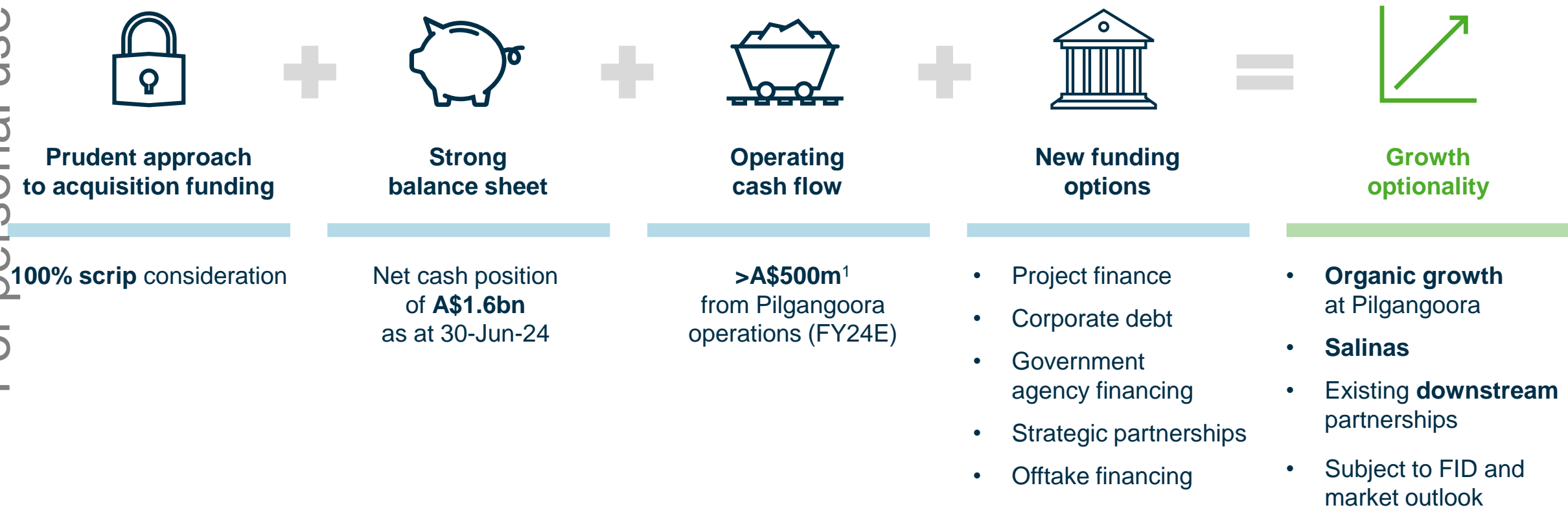


Source: Rho Motion EV & Battery Quarterly Outlook Q2 2024.

For personal use only

# 7 Financial flexibility for growth

The 100% scrip transaction preserves Pilbara Minerals' strong net cash position and ensures it remains well capitalised to execute on its growth pipeline



1. Based on Pilbara Minerals' unaudited cashflow from operations for the 12 months ended 30 June 2024.



# All share mutually beneficial transaction



- 1 **On-strategy, counter-cyclical transaction to diversify revenue** beyond Pilgangoora
- 2 Pilbara Minerals **unlocks Salinas' value** by de-risking funding and development
- 3 Expected to be **accretive** to Pilbara Minerals shareholders
- 4 Delivers second **100% owned**, expected **low-cost, Tier 1**, hard-rock lithium asset
- 5 **Optionality** to sequence new supply and **diversify** into growing EU and North American markets
- 6 All share transaction enables Latin Resource shareholder participation while **preserving Pilbara Minerals' balance sheet capacity and liquidity**

# Thank you



## Pilbara Minerals

### Investor Relations

James Fuller  
Manager, Investor Relations  
T: +61 (0) 488 093 763  
James.Fuller@pilbaraminerals.com.au

### Media

Michael Vaughan  
Fivemark Partners  
T: +61 (0) 422 602 720

## Latin Resources

### Media

Fiona Marshall  
Senior Communications Advisor  
White Noise Communications  
T: +61 400 512 109  
fiona@whitenoisecomms.com



For personal use only

# Key transaction information



# Indicative timetable<sup>1</sup>

For personal use only

Event	Date
First Court Date	Mid October 2024
Dispatch of Scheme Booklet to Latin Resources shareholders	Mid October 2024
Scheme Meeting	Mid November 2024
Second Court Date	Mid / late November 2024
Effective Date	Late November 2024
Scheme Record Date	Late November / early December 2024
Implementation Date	Late November / early December 2024

1. Dates are indicative only and subject to change without notice. The timetable can be delayed by a range of factors outside of the control of Pilbara Minerals and Latin Resources. Pilbara Minerals and Latin Resources reserve the right to alter the dates at their discretion and without notice, subject to the ASX Listing Rules, the *Corporations Act 2001* (Cth) and other applicable laws and regulatory approvals.

# Pro-forma snapshot

For personal use only

		Pilbara Minerals	Latin Resources	Pro-forma
<b>Share price (14-Aug-24)</b>	A\$/sh	2.85	0.120	2.85
<b>Basic shares outstanding</b>	m	3,011	2,799	3,216 <sup>1</sup>
<b>Market capitalisation</b>	A\$m	8,581	336	9,167
<b>Cash (30-Jun-24)<sup>2</sup></b>	A\$m	1,626	21	1,647
<b>Debt (30-Jun-24)<sup>2</sup></b>	A\$m	447	-	447
<b>Enterprise value</b>	A\$m	7,401	315	7,966
<b>Ore Reserves<sup>3</sup></b>	Mt LCE	6.3	-	6.3
<b>Mineral Resources<sup>3</sup></b>	Mt LCE	11.8	2.3	14.1

1. Assumes ~205.5 million total new Pilbara Minerals shares issued to Latin Resources shareholders and optionholders, inclusive of ~2.9 million new Pilbara Minerals shares to be issued under the Option Scheme.  
2. Cash and debt figures are unaudited. Debt excludes lease liabilities.  
3. Refer to: (i) "Ore Reserves and Mineral Resources" section on slide 4; (ii) the "Pilgangoora Mineral Resource and Ore Reserve" slide 33; and (iii) the "Latin Resources Mineral Resource" slide 32 for further information.



# Supporting Information



# Salinas PEA highlights

PEA completed by Latin Resources in September 2023 with DFS underway and to be optimised by Pilbara Minerals

For personal use only

Parameter	PEA Result <sup>1</sup>
<b>Operating metrics</b>	
Mining inventory	31.4 Mt
Mine life	11 years
Processing capacity	Stage 1: 1.5 Mtpa Stage 2: 3.6 Mtpa
LOM average head grade	1.24% Li <sub>2</sub> O
SC <sub>5.5</sub> recovery	67.2%
SC <sub>3.0</sub> recovery	11.1%
Global recovery	78.3%
LOM average SC <sub>5.5</sub> production	405 ktpa
LOM average SC <sub>3.0</sub> production	123 ktpa
LOM average SC <sub>5.2</sub> eq. production	499 ktpa
<b>Costs</b>	
Total cash costs (incl. royalties)	US\$567/t SC <sub>5.2eq.</sub>
Stage 1 development capex	US\$253m
Stage 2 development capex	US\$55m
Total development capex	US\$308m

### Mining inventory and mine life

- Latin Resources' PEA defined an initial mine life of 11 years
- **Resource upgrade of ~60% to 77.7Mt @ 1.24% Li<sub>2</sub>O<sup>2</sup>** since Latin Resources' PEA demonstrates **scope for significant mine life extension beyond 11 years** (to be confirmed in DFS)

### Processing capacity and staging

- Pilbara Minerals intends to utilise its experienced in-house project studies and engineering teams to **optimise the flowsheet, throughput rates and project staging** as part of the DFS

### Recoveries

- Course-grained spodumene **amenable to simple DMS-only processing**
- Latin Resources' PEA contemplated a saleable ~3% Li<sub>2</sub>O tails product – Pilbara Minerals will consider **further opportunities** to upgrade undersize material and DMS middlings to **improve recoveries** as part of the DFS

### Opex and capex

- To be refined based on plant size, mining rates and other factors which will be considered further as part of an optimised DFS

**To be refined by Pilbara Minerals as part of the DFS**

1. For more information refer to Latin Resources' ASX announcement "Robust results for Colina Lithium Project preliminary economic assessment" dated 28 September 2023. The PEA was based on a Mineral Resource of 45.2Mt @ 1.32% Li<sub>2</sub>O. Production and cash costs restated on a 5.2% Li<sub>2</sub>O equivalent basis. Refer to: (i) the "Ore Reserves and Mineral Resources" section on slide 4; (ii) the "Latin Resources Mineral Resource" slide 32; and (iii) the "production targets" section on slide 4 for further information.  
 2. For more information refer to Latin Resources' ASX announcement "Colina Lithium Deposit – Mineral Resource Estimate Upgrade" dated 30 May 2024. Refer to: (i) the "Ore Reserves and Mineral Resources" section on slide 4; and (ii) the "Latin Resources Mineral Resource" slide 32 for further information.

# Latin Resources – corporate overview

## Key management

**Aaron Maurer**  
Chief Operating Officer

Mr Maurer career includes key roles at Mineral Resources Limited for over 5 years, where he served as Executive General Manager – Operations, overseeing the Mt Marion Lithium mine and their three Iron Ore operations. Mr Maurer’s recent role as Head of Operations at Atlantic Lithium.

**Mitch Thomas**  
Chief Financial Officer

Experienced CFO in the resources sector. Broad exposure across commodities (precious, base, etc.) and geographies (Australia, Africa, Europe). Previous lithium experience as Rio Tinto’s CFO of Battery Materials based in Los Angeles, USA.

**Anthony Greenaway**  
VP of Operations – Americas

Senior geologist with greater than 25 years of international mining and exploration experience in Australia, Latin America, Asia and Africa. Involved with the exploration, development and production of copper and gold projects with Hancock Prospecting, Iron Ore Mining, White Star Resources and Talisman Mining.

**Leandro Gobbo**  
Brazil Director and Legal Counsel

Mr Gobbo is a lawyer who attended the University of Brasília Law School and specialized in Corporate Law, Mining, Mergers and Acquisitions and Contracts. He is also currently a partner at Machado Gobbo Advogados, a premier law firm headquartered in Brasília.

## Board of Directors



**Christopher Gale**  
Managing Director



**David Vilensky**  
Non-Executive Chairman



**Peter Oliver**  
Executive Director



**Brent Jones**  
Non-Executive Director



**Pablo Tarantini**  
Non-Executive Director



**Sarah Smith**  
Company Secretary

## Register analysis

### Board holdings and key shareholders

**Board members own ~4.8%**

**José Luis Manzano owns ~7.9% (Latin’s largest shareholder)**

### Institutional investors make up ~25% of Latin’s register

#### Institutional investors (Global)



#### Institutional investors (Brazil)



For personal use only

# Latin Resources Mineral Resource

## Salinas Mineral Resource Estimate (reported above a 0.50% Li<sub>2</sub>O cut-off grade)<sup>1,2</sup>

Deposit	Resource Category	Tonnes (Mt)	Grade (Li <sub>2</sub> O %)	Li <sub>2</sub> O (kt)	Contained LCE (kt)
Colina	Measured	28.64	1.31%	375.2	927.8
	Indicated	38.63	1.23%	475.1	1,175.0
	<i>Measured + Indicated</i>	<i>67.27</i>	<i>1.27%</i>	<i>854.3</i>	<i>2,112.8</i>
	Inferred	3.59	1.10%	39.5	97.7
	<b>Total</b>	<b>70.89</b>	<b>1.25%</b>	<b>889.8</b>	<b>2,200.5</b>
Fog's Block	Inferred	6.79	0.87%	59.1	146.1
	<b>Total</b>	<b>6.79</b>	<b>0.87%</b>	<b>59.1</b>	<b>146.1</b>
<b>Global Total</b>		<b>77.7</b>	<b>1.24%</b>	<b>948.9</b>	<b>2,346.6</b>

1. For more information refer to Latin Resources' ASX announcement "Colina Lithium Deposit Mineral Resource Estimate Upgrade" dated 30 May 2024.  
 2. Differences may occur due to rounding .

For personal use only

# Pilgangoora Mineral Resource and Ore Reserve

Category	Tonnes	Li <sub>2</sub> O	Ta <sub>2</sub> O <sub>5</sub>	Fe <sub>2</sub> O <sub>3</sub>	Li <sub>2</sub> O	Ta <sub>2</sub> O <sub>5</sub>
	(Mt)	(%)	(ppm)	(%)	(Mt)	(M lb)
<b>Mineral Resource estimate at 30 June 2023</b>						
Measured	22.1	1.34	146	0.44	0.3	7
Indicated	315.2	1.15	106	0.53	3.6	74
Inferred	76.6	1.07	124	0.54	0.8	21
<b>Total</b>	<b>413.8</b>	<b>1.15</b>	<b>112</b>	<b>0.53</b>	<b>4.8</b>	<b>102</b>
<b>Ore Reserve estimate at 30 June 2023</b>						
Proved	19.1	1.32	133	0.92	0.3	6
Probable	195.1	1.18	100	1.00	2.3	42
<b>Total</b>	<b>214.2</b>	<b>1.19</b>	<b>103</b>	<b>0.99</b>	<b>2.5</b>	<b>48</b>

Notes:

- Totals may not add up due to rounding.
- All Open-pit Ore Tonnes are defined using the weighted average cost and recovery of the Pilgan and Ngungaju Plants.
- Ore Reserves were estimated using projected concentrate prices of US\$1,450/dmt (CIF price) for 6% Li<sub>2</sub>O concentrate and US\$36/lb for 25% Ta<sub>2</sub>O<sub>5</sub> in concentrate.
- The Mineral Resource estimate is not additional to the Ore Reserve estimate. The Ore Reserve is the economically mineable part of the Measured and Indicated Resource. It includes allowance for ore losses and dilution during mining extraction as detailed in the ASX release dated 24 August 2023 "55Mt increase in Ore Reserves to 214Mt". Pilbara Minerals ensures that the Mineral Resource and Ore Reserve estimates quoted are subject to governance arrangements and internal controls at both a site level and at the corporate level. Mineral Resources and Ore Reserves are reported in compliance with the JORC Code 2012, using industry standard techniques and internal guidelines for the estimation and reporting of Ore Reserves and Mineral Resources. The Mineral Resources and Ore Reserve statements included in this document were reviewed by the Competent Persons prior to inclusion.
- Stockpiles at the Ngungaju Plant have had no Ta<sub>2</sub>O<sub>5</sub> grade applied.
- The Probable Ore Reserves include 5.0Mt of stockpiles. These comprise 1.7Mt at 1.27% Li<sub>2</sub>O and 0.72% Fe<sub>2</sub>O<sub>3</sub> at the Ngungaju Plant and 3.3Mt at 1.26% Li<sub>2</sub>O, 106ppm Ta<sub>2</sub>O<sub>5</sub> and 0.80% Fe<sub>2</sub>O<sub>3</sub> at the Pilgan Plant.
- For further information on the Pilgangoora Mineral Resource estimate and the Pilgangoora Ore Reserve estimate, refer to the ASX announcements 7 August 2023 "Substantial 109Mt Mineral Resource increase to 414Mt - further extends Pilgangoora's position as a world class lithium project" and 24 August 2023 "55Mt increase in Ore Reserves to 214Mt". Pilbara Minerals confirms that it is not aware of any new information or data that materially affects the information included in those announcements and that all material assumptions and technical parameters underpinning the Mineral Resource and Ore Reserve estimates continue to apply and have not materially changed.

# Supporting data: Select hard-rock lithium projects production capacity (slide 16)

Project	Production (kt, SCx)	Concentrate Grade (%)	Production (kt, SC5.2)	Announcement Date	Announcement Title
Greenbushes	2,000	6.0%	2,308	31 Aug 23	2023 Annual Report to Shareholders
Pilgangoora (P1000)	1,060	5.2%	1,060	21 Jun 24	Study Delivers 2MTPA Expansion Option - Highly Accretive
Wodgina	900	5.5%	952	27 Feb 24	JP Morgan Global High Yield & Leveraged Finance Conference Presentation
Mt Marion	900	4.0%	692	27 Feb 24	JP Morgan Global High Yield & Leveraged Finance Conference Presentation
Kathleen Valley	511	6.0%	590	11 Nov 21	Kathleen Valley DFS confirms Tier-1 global lithium project
Grota do Cirilo	520	5.5%	550	01 Apr 24	SIGMA LITHIUM ANNOUNCES FINAL INVESTMENT DECISION AND INITIATION OF CONSTRUCTION TO DOUBLE PRODUCTION CAPACITY TO 520,000t/y
Salinas	405 / 123	5.5% / 3.0%	499	25 Mar 24	Investor Presentation - Future Facing Commodities Conference
Mt Holland	383	5.5%	405	25 Apr 22	Technical Report Summary - Mt. Holland Lithium Project
James Bay	311	5.6%	335	25 Sep 23	James Bay Lithium Project Update Confirms Strong Project Economics
Carolina Lithium	242	6.0%	279	03 Jun 24	A Growing Lithium Producer: Offering Near-Term Leverage to Lithium Prices
Manna	221	5.5%	234	14 Feb 23	Manna Project Progresses After Robust Scoping Study Results
Rose	158 / 46	5.5% / 6.0%	220	11 Oct 23	ROSE LITHIUM-TANTALUM PROJECT FEASIBILITY STUDY NI 43-101 TECHNICAL REPORT
Pioneer Dome	200	5.5%	212	07 May 24	Updated Pioneer Dome Scoping Study
Abitibi Hub (NAL)	190	5.74%	210	14 Apr 23	Definitive Feasibility Study Confirms NAL Value With A\$2.2B NPV
Barroso	191	5.5%	202	12 Jun 23	New Scoping Study for the Barroso Lithium Project demonstrates Outstanding Economics: Post-tax NPV of US\$953 million, IRR of 77% and 1.3 year Payback
Bald Hill	150	5.5%	159	27 Feb 24	JP Morgan Global High Yield & Leveraged Finance Conference Presentation
Keliber	156	4.5%	135	13 Dec 23	Keliber Lithium Project, Finland Technical Report Summary