

# Rosario Copper Project

A strategically set high grade Cu-Ag project

August 2024

ASX: PAM  
Pan Asia Metals Limited

For personal use only

# Strategy



Secure and develop projects with the potential to position PAM as a low cost producer of the metals essential for electrification.

1

Projects in low cost jurisdictions which are positioned for high margin outcomes

2

Projects which are proximal to industrial, chemical processing, manufacturing

3

Metals which have appropriate underlying supply and demand dynamics

# Investment Highlights



A highly prospective Copper exploration project in a World Class location.

## Grade and Location

73/89 samples at >0.1% Cu average 2.13% Cu and 6.4g/t Ag.

43/73 (>58%) samples at >1.5% Cu average 3.0% Cu and 9g/t Ag.

10KM north of El Salvadore Cu Mine.

In Chile's Copper Belt.

Substantial small scale historical mining.

## Upside

Multiple walk up drill targets.

IP Geophysics will increase certainty of drill targets.

Access is simple, minimal drill pad preparation required.

Geophysics and Drill results will generate strong news flow.

## Infrastructure

El Salvadore mine operating since 1959, reflected in abundant infrastructure.

23,000 people x 2 towns within 65km.

95% Sealed road to processing plant and ports.

Energy infrastructure close by.

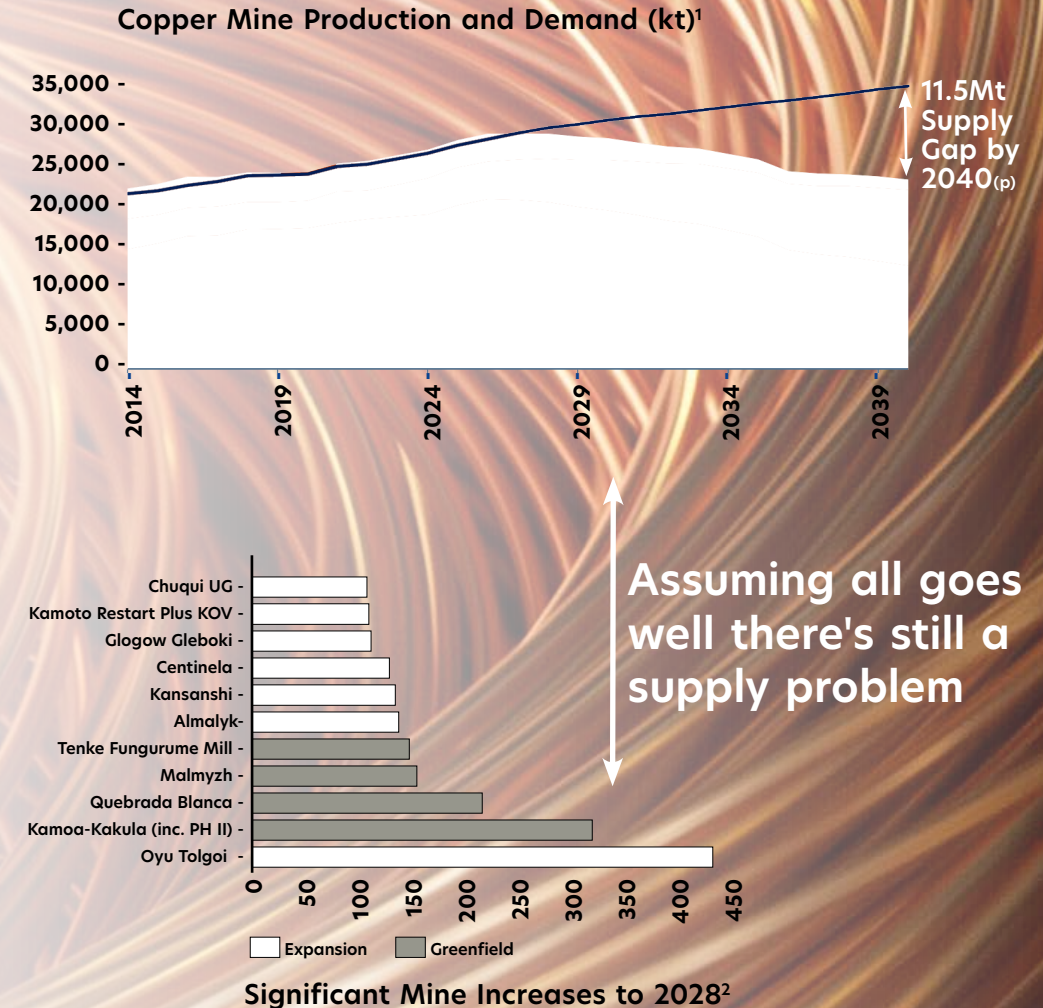
# Copper



Copper concentrate supply constrained and smelter capacity growing. Energy transition pushing ahead, supporting demand.

For personal use only

- 1 The copper inventory is critically low, the future supply-demand balance is uncertain.
- 2 There has been a shortage of investment in exploration, with no new major new discoveries.
- 3 Electrification to substantially increase copper demand, deficits expected from late '20s.
- 4 Mining companies and metal traders are warning the shortfall could arrive as early as 2025.
- 5 Permitting processes for new projects in most jurisdictions are experiencing delays.
- 6 A backdrop of fiscal uncertainty persists amid heightened geopolitical tensions.



# Copper



Copper inventories at historical lows despite recent increases.  
Copper Days Consumption still ~1/2 Long Term Average

For personal use only

Chart 1: Global Copper Stocks (Mt) and Days of Consumption<sup>3</sup>

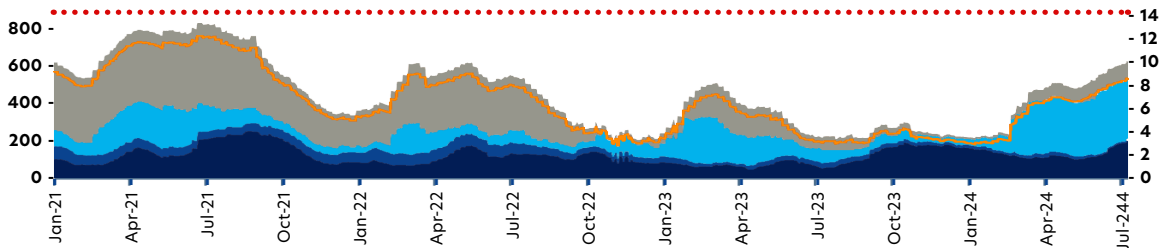
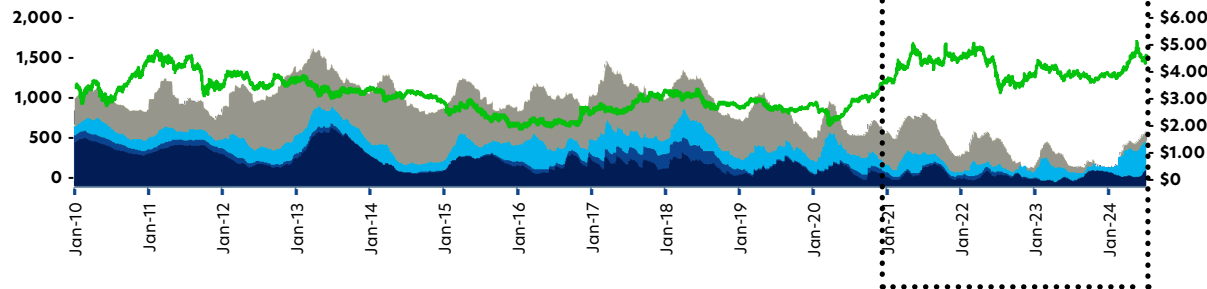


Chart 2: Global Visible Refined Copper Stocks (kt) and LME Price (US\$/lb)<sup>4</sup>



Current inventory increases are not significant in the context of the long term average.

~\$9,026/t | \$4.10/lb (13 Aug 2024)

- LME Stocks
- Comex Stocks
- SHFE Stocks
- Bonded Estimate
- LME Price Comex (Chart 2)
- Days Consumption (Chart 1)
- Long Term Average Days Consumption (Chart 1)

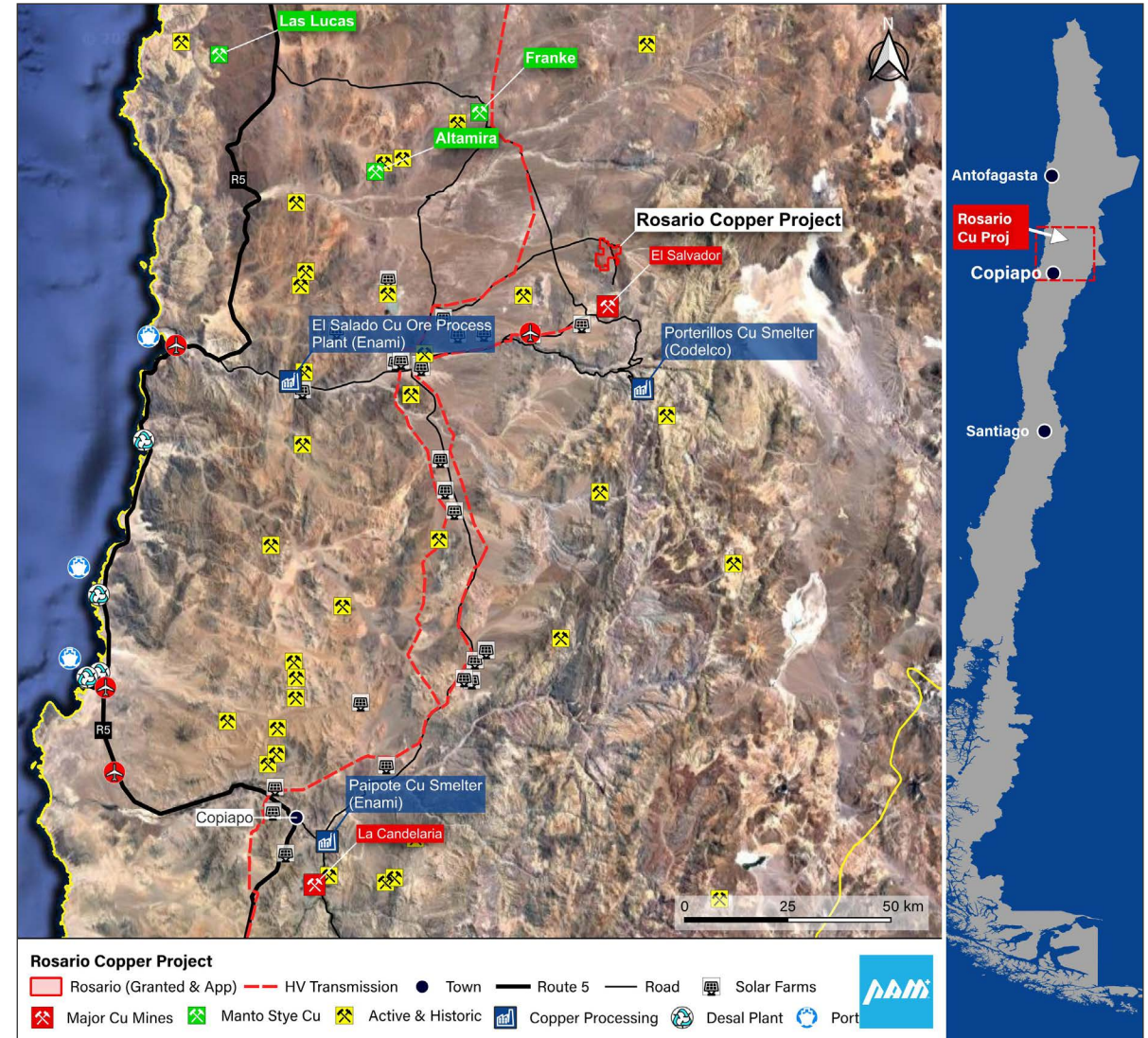
# Project Overview



Current inventory increases are not significant in the context of the long term average.

For personal use only

- 1 Chile has a world class copper endowment.
- 2 Rosario is a high grade Cu-Ag project located in a highly active mining district.
- 3 Situated in an infrastructure rich setting, next to the El Salvador copper mine.
- 4 Oxide and sulphide processing and copper smelting plant is near by.
- 5 The project is at ~2,500m, 40km from an airport and easily accessible by road.
- 6 It is 100km from a copper processing plant and 130km from the nearest port.

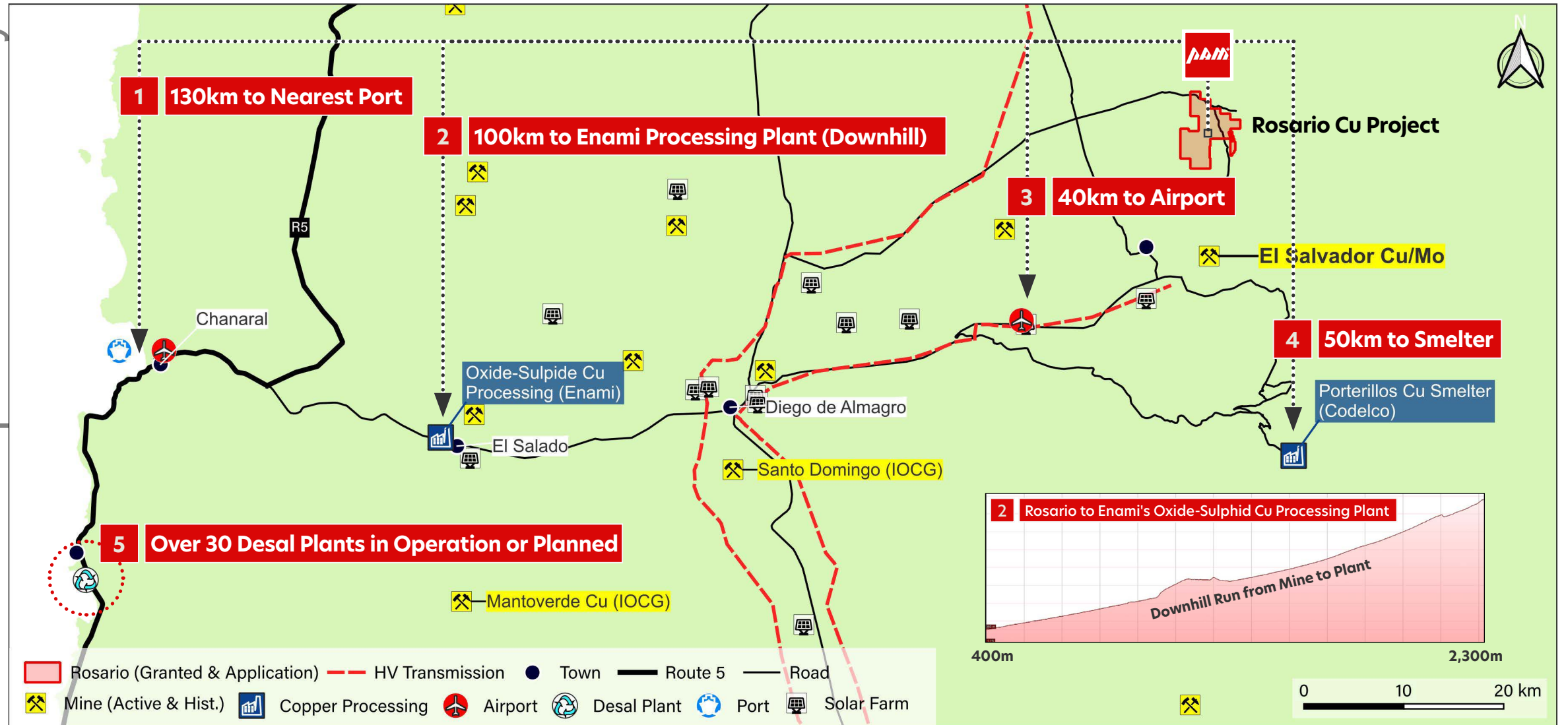


# Rosario Copper Project



Rosario is positioned for low capex and opex outcomes.

For personal use only

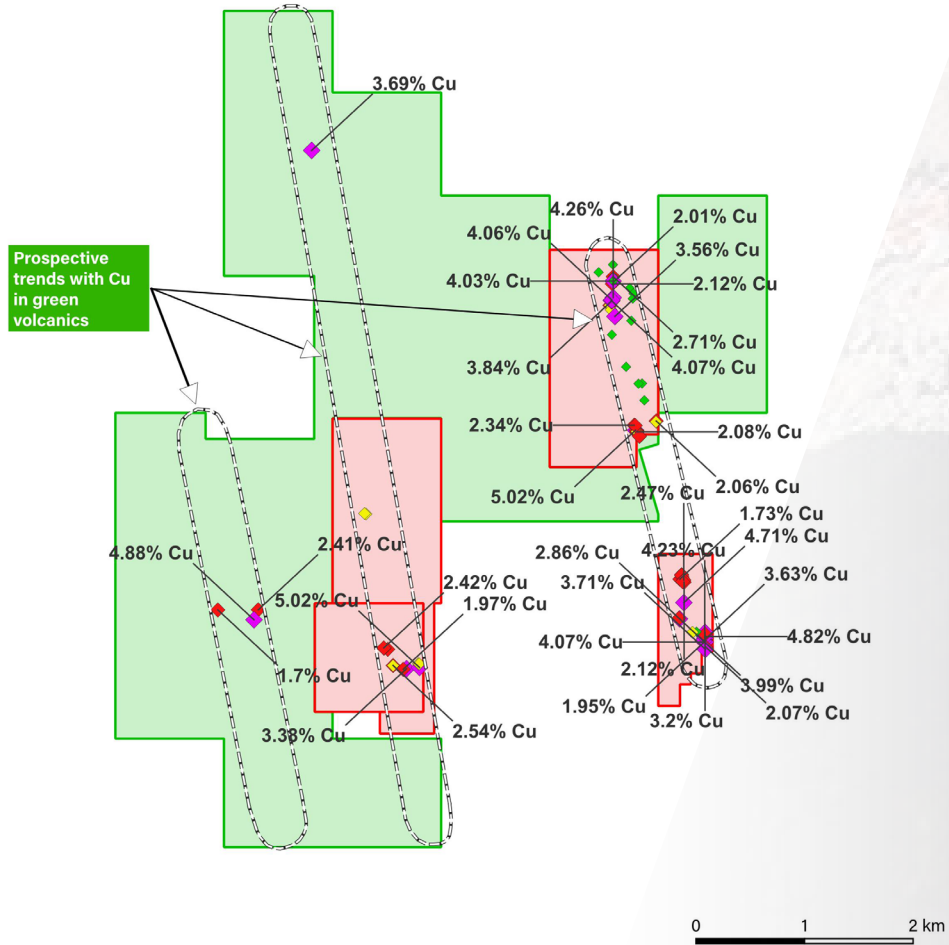


# Rosario Copper Project



Rosario is interpreted as highly prospective yet significantly under explored Manto style copper-silver project.

For personal use only



- 1** Rosario has all the hallmarks of a low cost high margin project.
- 2** Manto style copper is responsible for a significant portion of copper production in Chile.
- 3** Rosario has three distinct prospective trends with a combined strike length of ~15km.
- 4** Mineralised zones are associated with fractured and brecciated rocks.
- 5** These zones are interpreted to be from 20m wide up to 200m wide, with assays up to >5% Cu.
- 6** 73/89 (>80%) samples at >0.1% Cu average 2.13% Cu and 6.4g/t Ag.
- 7** 43/73 (>58%) samples at > 1.5% Cu average 3.0% Cu and 9.0g/t Ag.

# Rosario Copper Project



## Selected samples

For personal use only



1  
BARB 004 - 3.69% Cu



2  
BARB 010 - 4.88% Cu



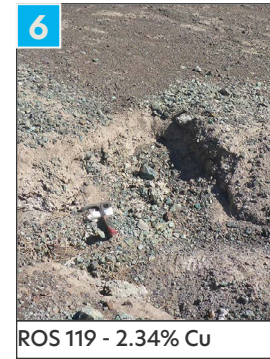
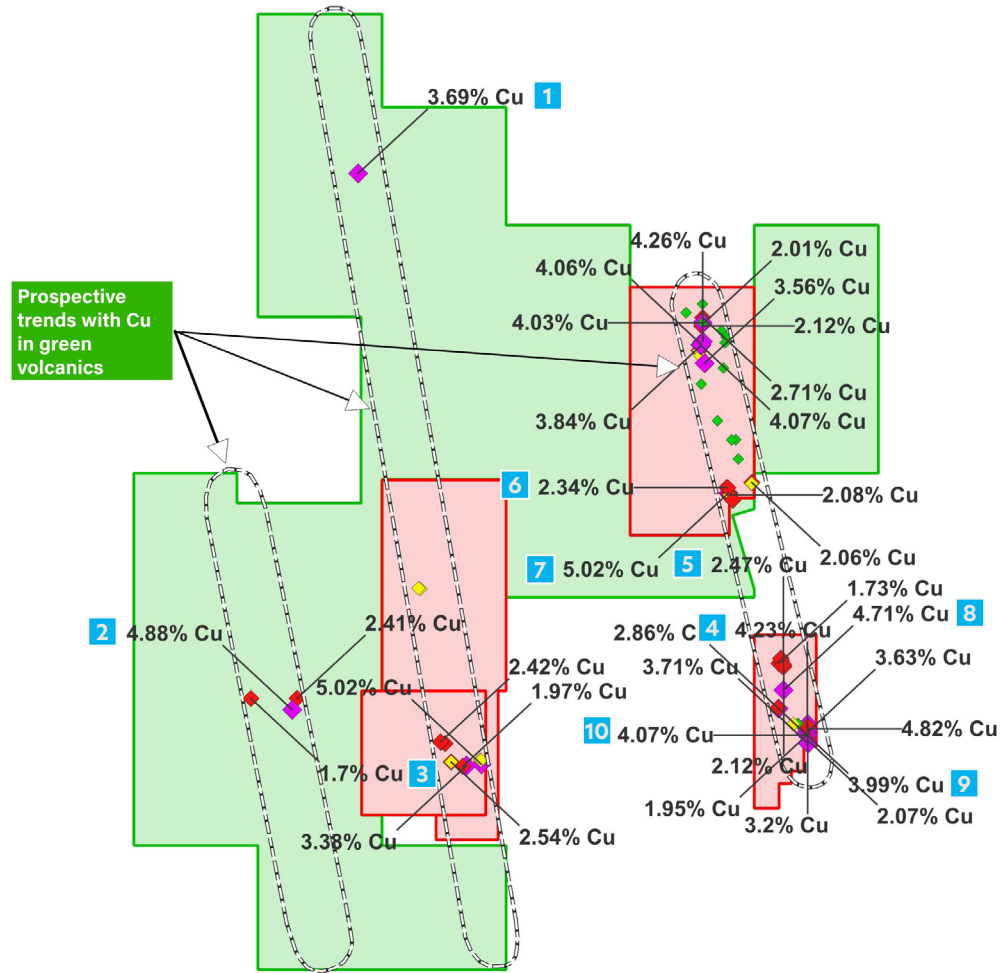
3  
BARB 011 - 1.70% Cu



4  
BARB 112 - 4.23% Cu



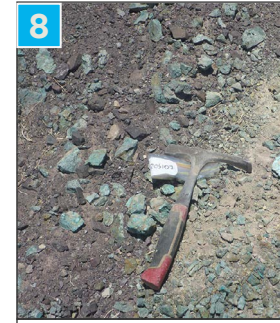
5  
ROS 114 - 2.47% Cu



6  
ROS 119 - 2.34% Cu



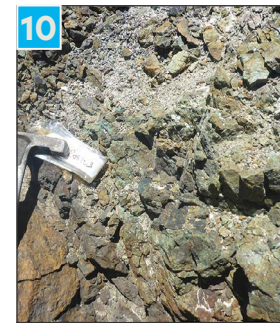
7  
ROS 117 - 5.02% Cu



8  
ROS 107 - 4.71% Cu



9  
ROS 105 - 3.99% Cu



10  
ROS 103 - 4.07% Cu

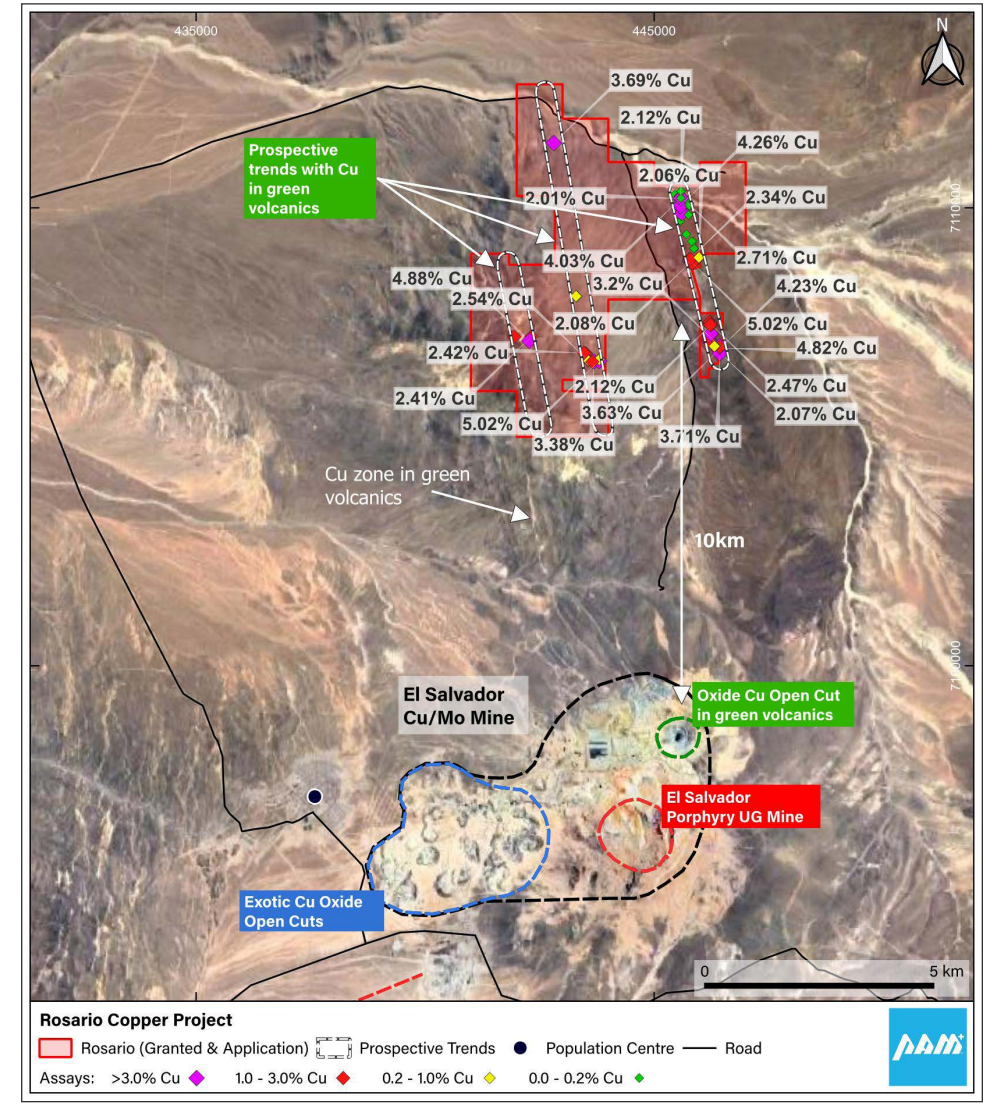
# Rosario Copper Project



Rosario's proximity to Codelco's El Salvador mine bring advantages.

For personal use only

- 1 The El Salvador porphyry copper deposit is located approximately 10km south of the Rosario Project.
- 2 The mineralised porphyries at El Salvador intrude the same rocks that host mineralisation at Rosario. Any genetic link?
- 3 Some minor unmineralised porphyry intrusives exist and potential for blind porphyry targets cannot be discounted.
- 4 El Salvador brings with it established large infrastructure, the town of El Salvador (pop. ~ 7000), and nearby processing.

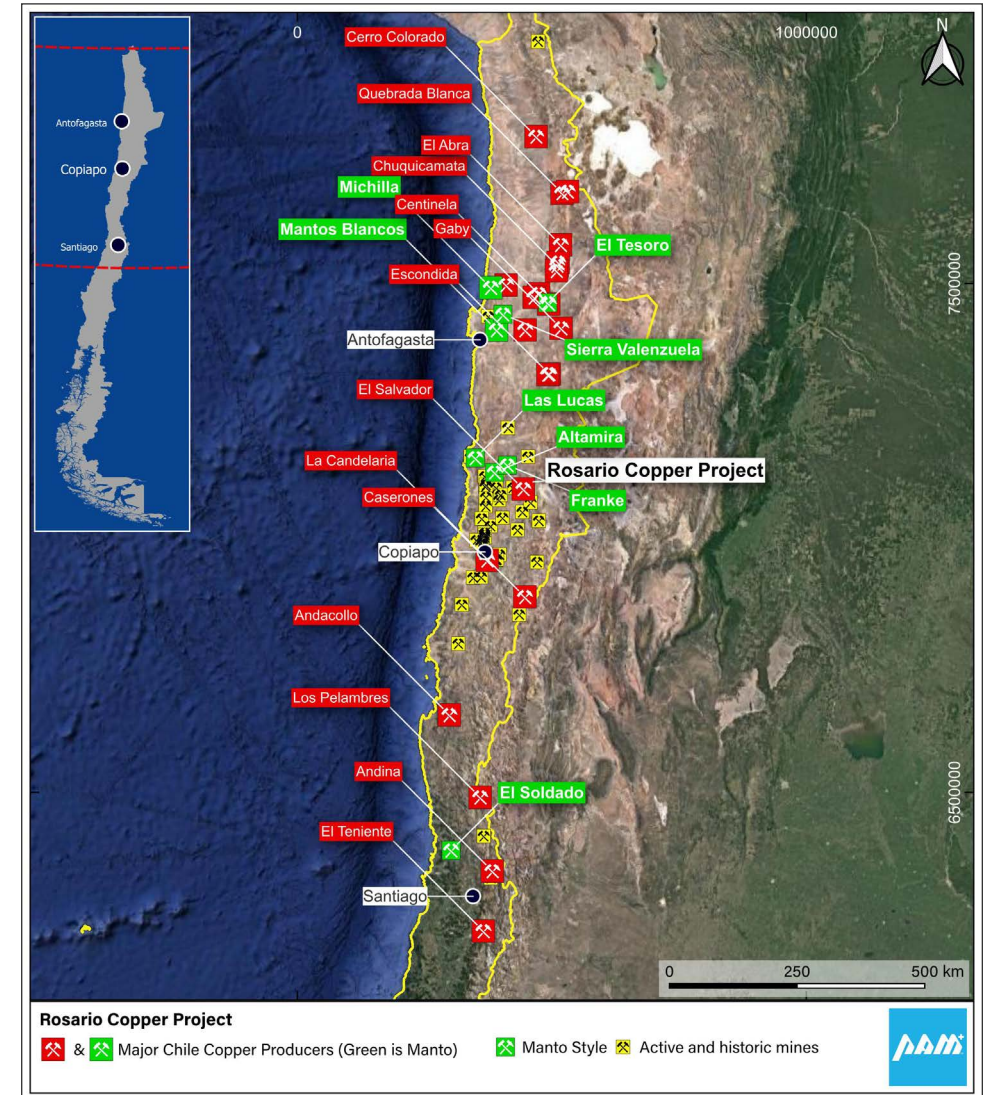


# What does 'Manto' mean?



Manto deposits are common in Chile.

- Manto means layer, cloak, blanket.
- In geology a Manto is a stratabound deposit conformable with the enclosing rocks.
- In Chile, Mantos occur in distinct belts.
- Host rocks are mostly andesite-basalts, sediment interbeds, felsic volcanics, tuff-sediments and limestone
- All have flat to moderate dips, +2km thick.
- Most deposits have nearby 'coeval' intermediate to felsic plutons, subvolcanic?
- Typical copper + silver mineralisation occurs in 'favourable' horizon(s), tabular and stacked.
- Deposits typically have high grades 1-3% Cu
- Primary copper minerals mostly chalcocite-digenite, bornite and chalcopyrite, some secondary sulphides and nearer surface oxides and Cu wad.



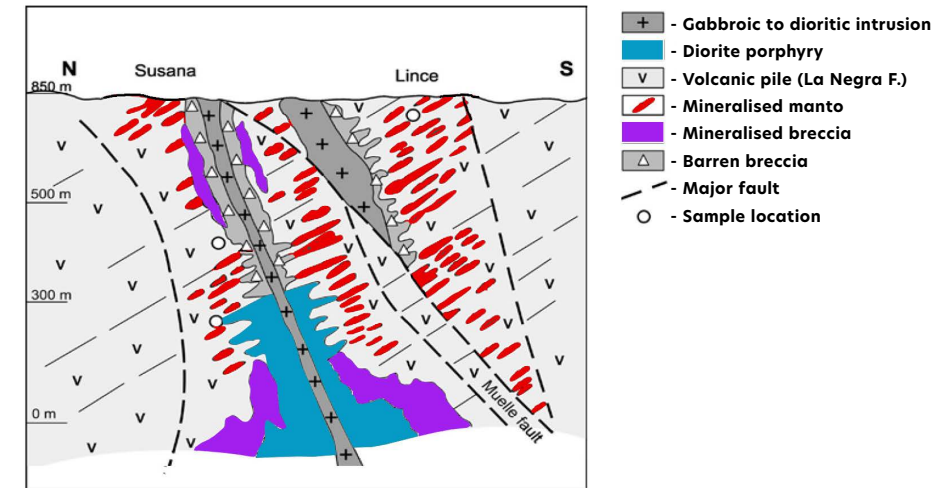
# Manto at Rosario

Rosario is likely a Manto with good scale.

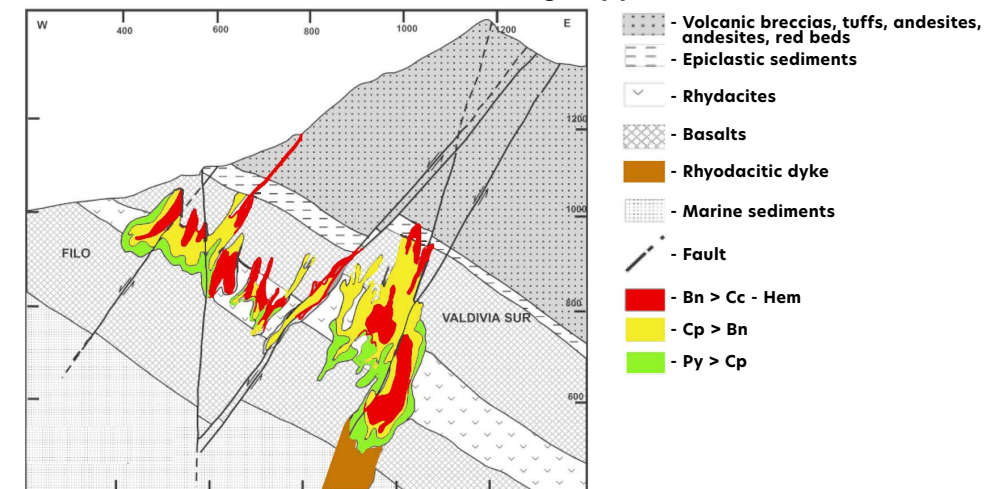


- Andesite and sed's host rock, north trending and cross cutting faults.
- Late Cretaceous to early Tertiary aged.
- Local felsic to dioritic intrusives.
- Alteration minerals observed.
- Copper oxides observed and sampled, good stats.
- Rocks, structures mineralised, good grades.
- Litho-structural model is for mineralisation in main fault and cross-cutting faults in favourable stratigraphy and structural intersections maybe up to 200m wide.
- Geophysics should easily identify sub-surface copper mineralisation and provide direct drill targets.
- El Salvador porphyries strike and plunge toward Rosario, possibly a porphyry at depth.

Susana-Lince cross section showing copper orebodies<sup>5</sup>



Filo-Valdivia Sur cross section showing copper orebodies<sup>6</sup>

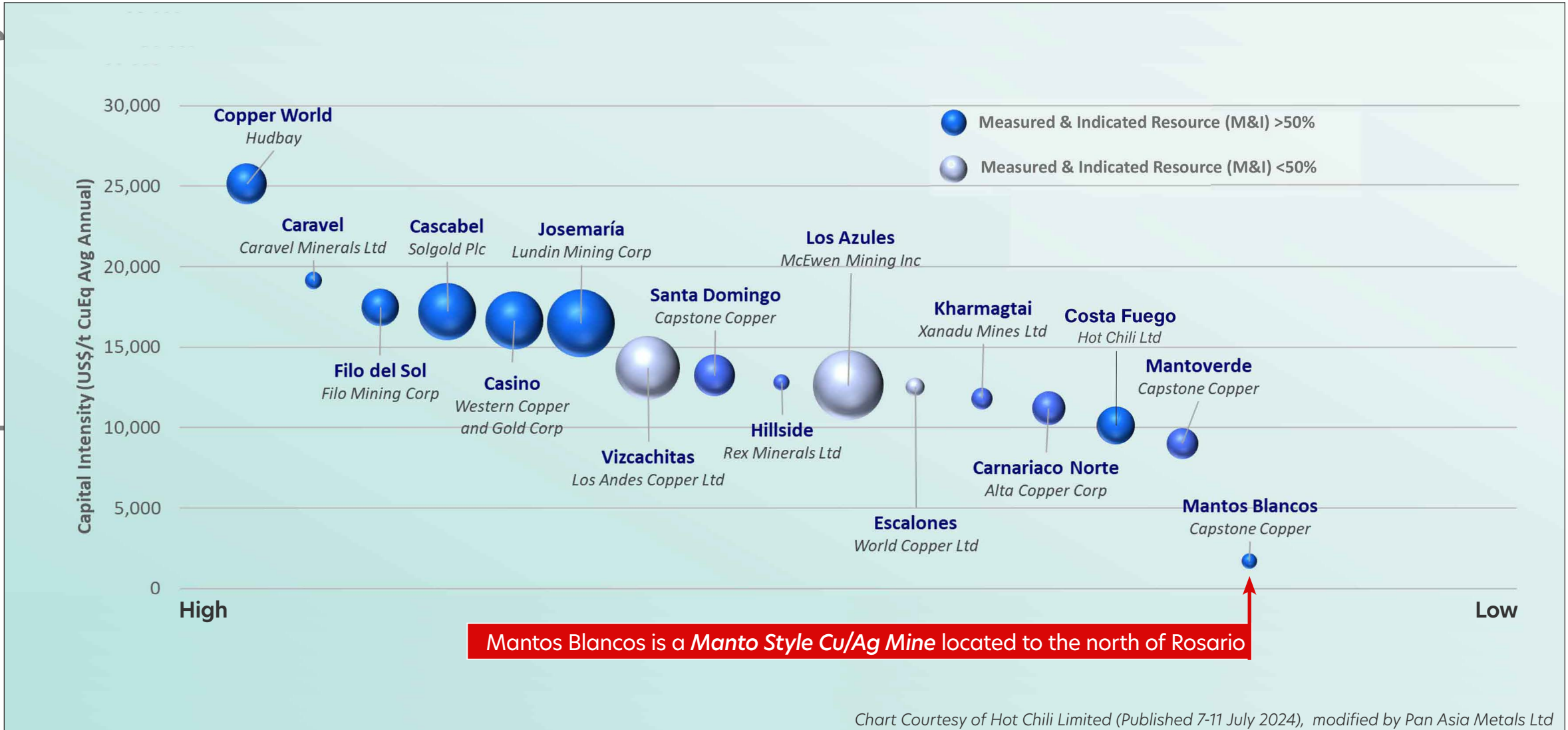


# Manto and costs



Manto style deposits can produce very low capex and opex outcomes.

For personal use only



# Next Steps



Planning to move Rosario forward rapidly looming copper deficits.

For personal use only

1a

Additional geochemical sampling, mapping, trenching.

1b

Induced Polarisation geophysics, which is anticipated to rapidly delineate drill targets.

2

Drilling.



# Explore a Better Future<sup>®</sup>

[panasiametals.com](https://panasiametals.com)

Copyright 2024 Pan Asia Metals Limited. All Rights Reserved.

For personal use only



# Appendicies



# Corporate Snapshot



## Simple capital structure, Management has skin in the game

### Capital Structure<sup>1</sup>

Market Cap <sup>1a</sup>	A\$18.4M @ 9.9c/share
Cash	A\$0.73M
Shares on issue <sup>1a</sup>	185,518,343
Options / Warrants	Nil
Convertible Notes <sup>1b</sup>	A\$0.93M

### Key Shareholders<sup>2</sup>

Paul Lock	45.4M	24.5%
Sydney Equities Pty. Ltd. <sup>2a</sup>	17.6M	9.5%
Citicorp Nominees	15.8M	8.5%
BNP Paribas Nominees	8.8M	4.7%
<b>Board &amp; Management</b>		<b>~40%</b>



**Paul Lock**  
Chairman & Managing Director

- Focused on mineral resources in Southeast Asia since 2012
- Background in project finance and corporate advisory
- Former commodities trader with Marubeni and derivatives trader with Rothschild



**David Hobby**  
Technical Director & Chief Geologist

- An Economic Geologist with 30+ years field experience
- Exposure to a variety of geological terrains in Asia, Australia, Argentina, USA and Africa
- Experienced in all facets of the minerals project cycle



**David Docherty**  
Non-Executive Director

- Involvement in the resource sector since 1965, MD, Mining Finance Corporation (ASX) in 1969
- MD, Sedimentary Holdings (ASX) 1980-87, foundation member of the Thai Chatree gold prospect discovery team
- Exec. Chairman, Thai Goldfields NL since 2002



**Thanasak Chanyapoon**  
Non-Executive Director

- Partner at The Capital Law Office, a leading Bangkok legal practice
- NED of Cal-Comp Electronics PLC, a company listed on the Stock Exchange of Thailand
- Well established in the Thai business community

# Tama Atacama Lithium Project

## PROJECT OVERVIEW

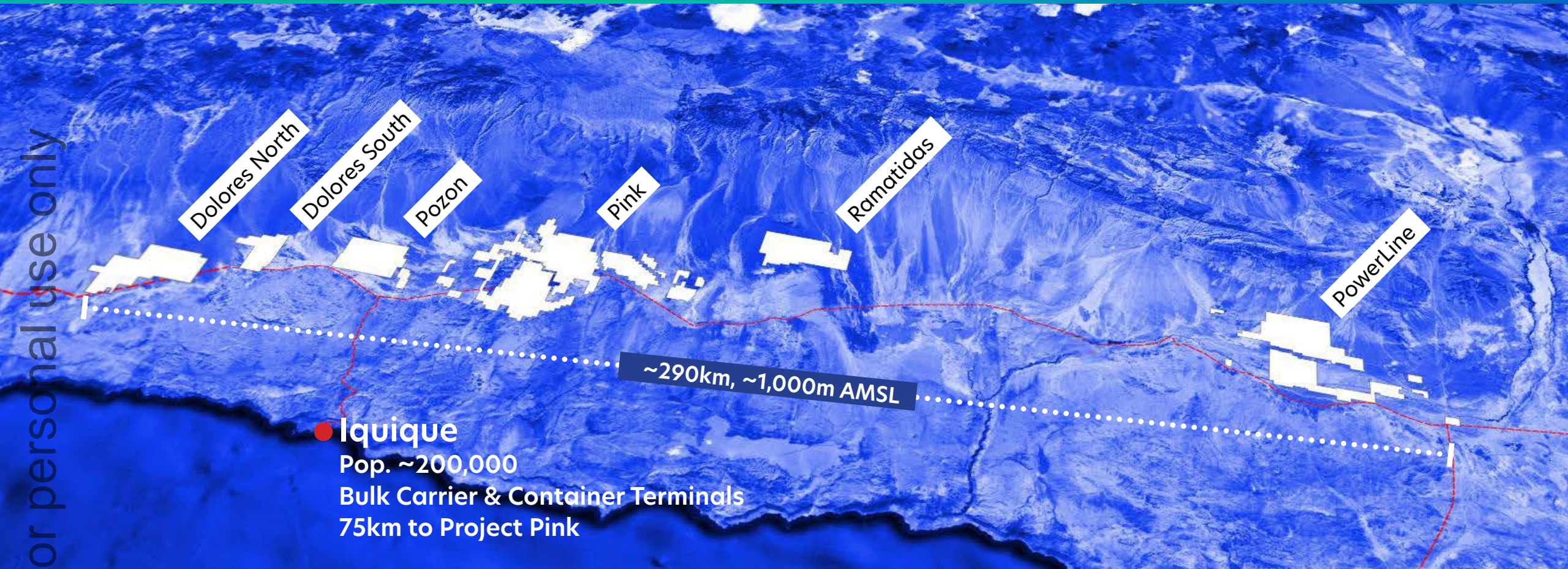
- One of the largest and most strategically positioned Lithium brine projects in South America
- Hosted in the Pampa del Tamarugal basin in the northern part of the Atacama Desert, northern Chile
- Six project areas extend ~290km north to south and covers >1500km<sup>2</sup>
- Highly elevated Li in surface samples, 56 of 177 samples >270ppm Li averaging 700ppm Li and ranging up to 2200ppm Li
- Geochemical signature of surface salt crusts similar to that of Salar de Atacama
- Elevated boron, potassium and magnesium.



# The Tama Atacama Lithium Project



For personal use only



Major Port Infrastructure



Substantial Energy Infrastructure



Quality Road & Rail Infrastructure

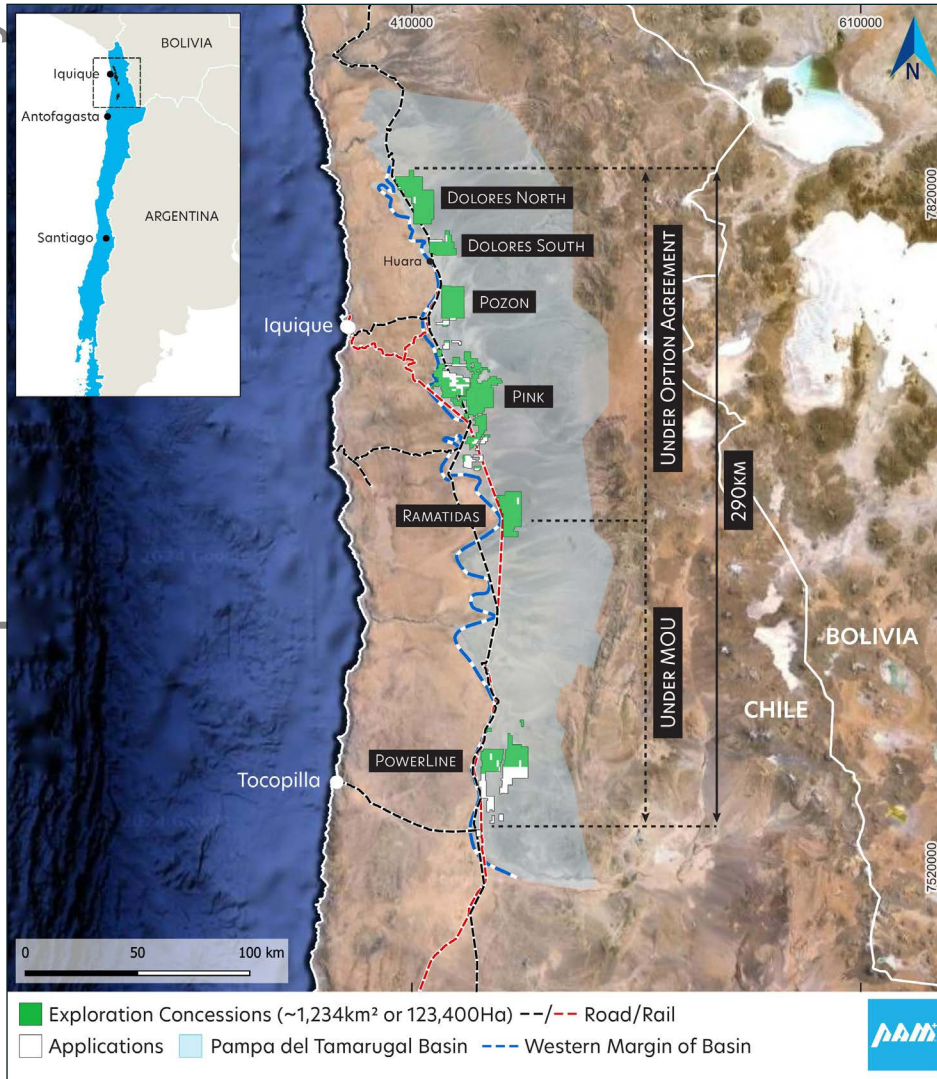


Multiple Evaporation Operations



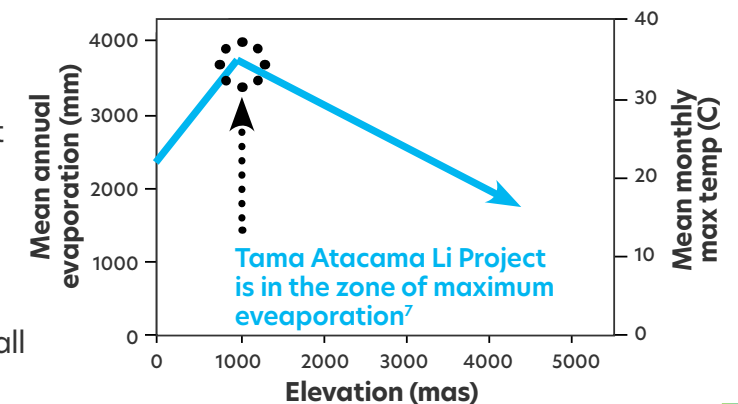
## One of South America's largest and most strategically positioned lithium brine projects

For personal use only



Tier 1 Lithium Brine project located in a Tier 1 mining jurisdiction. Circa 120,000ha (~1,200km<sup>2</sup>) of license area under Option for 100% containing ~103,600Ha (~1,036km<sup>2</sup>) of granted Exploration Concessions. Total ~123,400Ha (~1,234km<sup>2</sup>) of granted Exploration Concessions. High grade Li surface assays, up to 2,200ppm Li, average 700ppm Li.

- The Tama-Atacama Lithium Project comprises six key project areas in northern Chile, extending over 290km north to south and covering an area >1500km<sup>2</sup>.
- Well-established geology and work completed to date confirms strong potential for Li brine deposits hosted in the Pampa del Tamarugal basin in the northern Atacama Desert.
- Highly elevated Li with 56 of 177 surface assays >270ppm Li averaging 700ppm Li and up to 2200ppm Li.
- Li anomalies are situated in a trend which extends ~160km from north to south.
- Elevated boron, potassium and magnesium commonly associated with elevated Li.
- Geochemical signature of surface salt crusts similar to that of Salar de Atacama.
- Excellent infrastructure including major highway access, water (salt and fresh), solar power, nearby ports, airports, rail and major logistics hubs.
- Situated at an altitude of 800-1100m ASL in a hyper-arid environment with little to no rainfall and extreme evaporation.



# RK Lithium Project

## PROJECT OVERVIEW

- **RK Lithium Prospect**

- 14.8MT @ 0.45% Li<sub>2</sub>O Mineral Resource (JORC 2012)
- PFS underway, exceptional metallurgical, roasting and leaching test work results
- Property secured

- **BT Lithium Prospect**

- 16-25MT @ 0.4-0.7% Li<sub>2</sub>O Exploration Target (Drill Supported, JORC 2012)

The potential quantity and grade of the Exploration Target are conceptual in nature. There has been insufficient exploration to estimate a Mineral Resource and it is uncertain if further exploration will result in the estimation of a Mineral Resource.

- **KT East Lithium Prospect**

- Drill Ready, Potential for scale, Footprint >RK and BT Lithium Prospects combined



# The RK Lithium Project



## BT Lithium Prospect

Exploration Target (JORC 2012)  
16-25MT @ 0.4%-0.7% Li<sub>2</sub>O  
(ASX: 10 July, 2023)

DSPL 1/2562

DSPL 2/2562

35km

SPLA 1/2567

## KT Lithium Prospect

Very Large Discovery - 2.4km x 2.4km  
Assays up to 3.06%, Avg 1.14% Li<sub>2</sub>O mod  
Lep-Peg Zone 1.5km x 0.5km and open  
(ASX: 24 June, 2024)

SPLA 2/2567

## RK Lithium Prospect

Mineral Resource (JORC 2012)  
14.8MT @ 0.45% Li<sub>2</sub>O  
53% Measured & 22% Indicated  
(ASX: 02 November, 2023)

## 240MW Hydro Power on Grid



## Roads and Wires ~1km



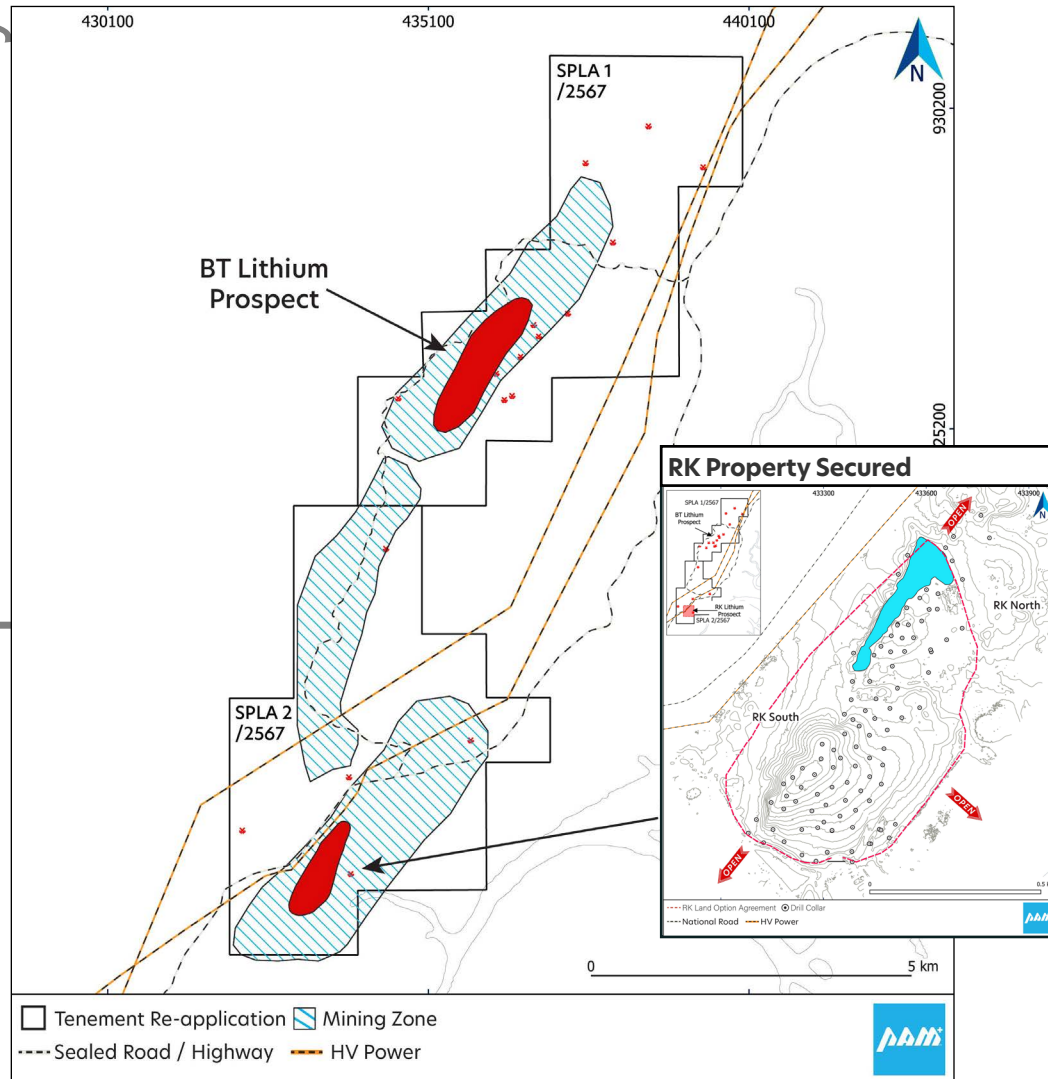
## Legend

- License / Application Boundary
- Drill Holes
- Sealed Roads
- High Voltage Energy
- Rail

For personal use only

## Mineral Resources defined, feasibility work underway, property secured

For personal use only



- PAM's projects are aligned with Thai Govt. EV and LIB manufacturing policies
- PAM has Thai Federal, provincial and local Govt. and community support
- RK Property secured via Exclusivity Agreement, negotiations underway
- PAM's projects are proximal to all required infrastructure, including:
  - The 240MW Rajjaprabha Hydro Power Station
  - Phet Kasem Road or Highway 4, one of Thailand's four primary highways

### RK Lithium Prospect - Mineral Resource Estimate (JORC 2012)

RESOURCE CATEGORY	Mt	Li <sub>2</sub> O (%)	Sn (ppm)	Ta <sub>2</sub> O <sub>5</sub> (ppm)	Rb (%)	Cs (ppm)	LCE (t)
Measured	7.80	0.44	410	74	0.20	230	85,289
Indicated	3.26	0.49	349	85	0.20	261	39,375
Inferred	3.74	0.41	390	78	0.19	229	38,252
<b>Total</b>	<b>14.80</b>	<b>0.45</b>	<b>391</b>	<b>77</b>	<b>0.20</b>	<b>237</b>	<b>164,500</b>

Mineral Resource is reported above 0.25% Li<sub>2</sub>O cut-off. Appropriate rounding applied. Refer to ASX announcement dated 02 November 2023.

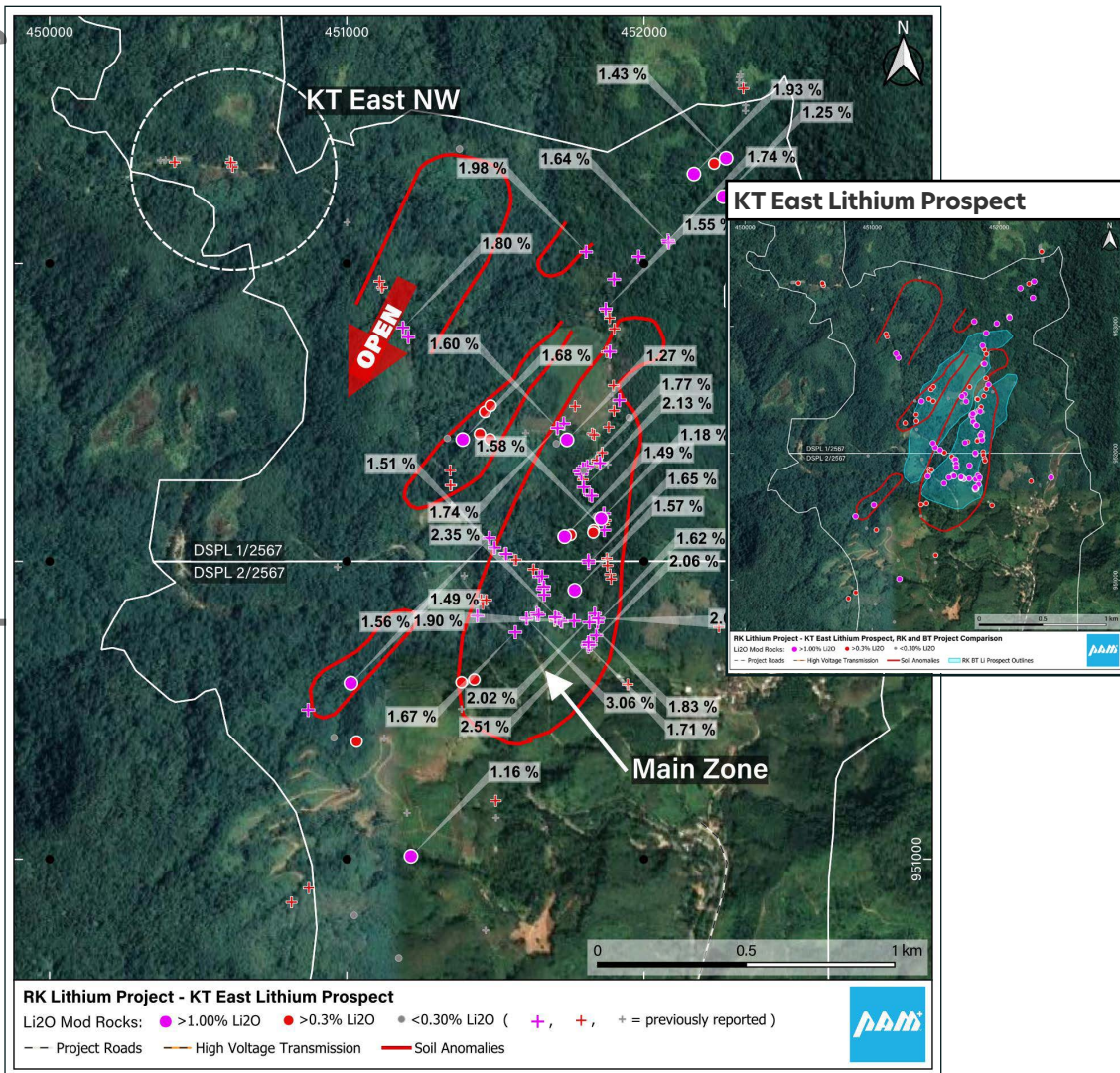
### RK Lithium Prospect - Mineral Resource by Weathering Zone

RESOURCE CATEGORY / ZONE	MT	Li <sub>2</sub> O (%)	Sn (ppm)	Ta <sub>2</sub> O <sub>5</sub> (ppm)	Rb (%)	Cs (ppm)
All - Fresh	11.38	0.42	424	76	0.20	222
All - Ox/Trans	3.42	0.51	278	84	0.19	285
<b>Total</b>	<b>14.80</b>	<b>0.45</b>	<b>391</b>	<b>77</b>	<b>0.20</b>	<b>237</b>

Note: Relevant ASX Releases are listed on page 26

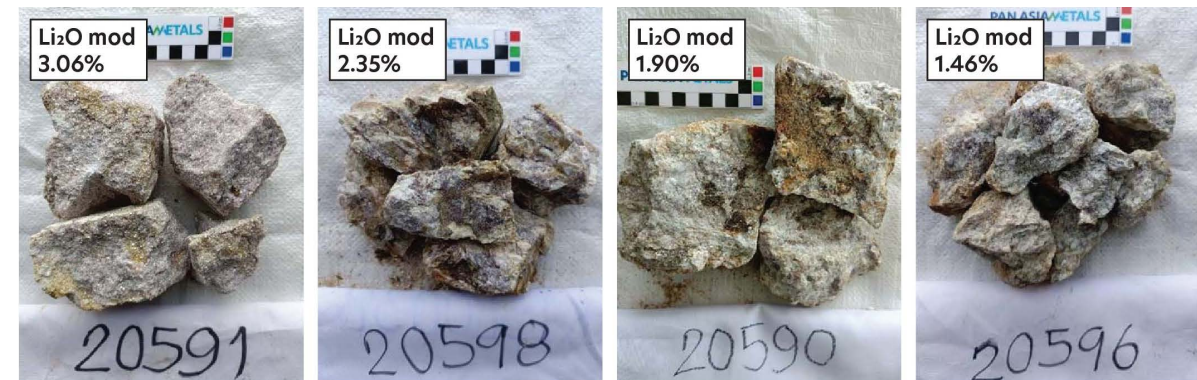
## RK Lithium Project - KT East Lithium Prospect

For personal use only



### Potential for scale, Drill Ready:

- Combined soil and rock chip sampling programs indicate the pegmatite field occurs over a strike length of ~2.1km and a width of ~1.0km.
- 138/181 rock chips at >0.25% Li<sub>2</sub>O mod average 1.04% Li<sub>2</sub>O mod.
- Abundant lepidolite pegmatite dykes identified in a Main Zone of ~1.5km long and 500m wide .
- Individual dykes in this area are at least 20m wide, with many other dykes in the swarm commonly from 1-10m wide.
- Pegmatites are stacked and dip moderately suggesting KT East is likely amenable to open pit mining.
- KT East has a larger footprint than the RK and BT Lithium Prospects combined, with the north-western prospect area associated with extensive historic tin mining.



Note: Relevant ASX Releases are listed on page 26

# Disclaimer and Important Information



## Disclaimer

This presentation has been prepared by Pan Asia Metals Limited, a Singapore based company with Reg. No. 201729187E ('PAM' or 'Pan Asia' or 'Company'). This presentation has been prepared in good faith, as a summary only, and does not contain all information about Pan Asia's assets and liabilities, financial position and performance, profits and losses, prospects, and the rights and liabilities attaching to Pan Asia's securities. The securities issued by Pan Asia are considered speculative and there is no guarantee that they will make a return on the capital invested, that dividends will be paid on the shares or that there will be an increase in the value of the shares in the future. Pan Asia does not purport to give financial or investment advice. No account has been taken of the objectives, financial situation or needs of any recipient of this presentation. Certain information in this document has been derived from third parties and although PAM has no reason to believe that it is not accurate, reliable or complete, it has not been independently audited or verified by Pan Asia. Recipients of this presentation should carefully consider whether the securities issued by Pan Asia are an appropriate investment for them in light of their personal circumstances, including their financial and taxation position. Investors should make and rely upon their own enquiries before deciding to acquire or deal in the Company's securities.

## Forward Looking Statements

Various statements in this presentation constitute statements relating to intentions, future acts and events which are generally classified as "forward looking statements". These forward looking statements are not guarantees or predictions of future performance and involve known and unknown risks, uncertainties and other important factors (many of which are beyond the Company's control) that could cause those future acts, events and circumstances to differ materially from what is presented or implicitly portrayed in this presentation. For example, future reserves or resources or exploration targets described in this presentation may be based, in part, on market prices that may vary significantly from current levels. These variations may materially affect the timing or feasibility of particular developments. Words such as "anticipates", "expects", "intends", "plans", "believes", "seeks", "estimates", "potential" and similar expressions are intended to identify forward-looking statements. Pan Asia cautions security holders and prospective security holders to not place undue reliance on these forward-looking statements, which reflect the view of Pan Asia only as of the date of this presentation. The forward-looking statements made in this presentation relate only to events as of the date on which the statements are made. Except as required by applicable regulations or by law, Pan Asia does not undertake any obligation to publicly update or review any forward-looking statements, whether as a result of new information or future events. Past performance cannot be relied on as a guide to future performance.

## Important

To the extent permitted by law, PAM and its officers, employees, related bodies corporate and agents (Agents) disclaim all liability, direct, indirect or consequential (and whether or not arising out of the negligence, default or lack of care of PAM and/or any of its Agents) for any loss or damage suffered by a Recipient or other persons arising out of, or in connection with, any use or reliance on this presentation or information.

### RK Lithium Project - BT Lithium Prospect JORC Exploration Target

At its BT Lithium Prospect which is a part of the RK Lithium Project, PAM has generated a drill supported Exploration Target of 16-25 million tonnes grading 0.4-0.7% Li<sub>2</sub>O as defined under JORC Code (2012). Readers are advised that there has been insufficient exploration to estimate a Mineral Resource and that it is uncertain if further exploration will result in the estimation of a Mineral Resource. Readers are advised to refer to the following ASX release for details on the Exploration Target: 10 Jul 2023 - Bang I Tum Lithium Prospect Exploration Target Update.

The Company confirms that it is not aware of any new information or data that materially affects the information included in the original market announcements and that all material assumptions and technical parameters continue to apply and have not materially changed. The Company confirms that the form and context in which the Competent Person's findings are presented have not been materially modified from the original market announcements.

Please refer to other relevant Competent Persons statements, references and ASX Releases as listed in 'Important Information' starting on page 26.

# Important Information



## Competent Persons Statement (Excluding RK Lithium Project MRE)

The information in this Public Report that relates to Exploration Targets, Exploration Results, Mineral Resources or Ore Reserves is based on information compiled by Mr David Hobby, who is a Member of the Australasian Institute of Mining and Metallurgy. Mr Hobby is an employee, Director and Shareholder of Pan Asia Metals Limited. Mr Hobby has sufficient experience that is relevant to the style of mineralization and type of deposit under consideration and to the activity that he is undertaking to qualify as a Competent Person as defined in the 2012 Edition of the Australasian Code for Reporting of Exploration Results, Mineral Resources and Ore Reserves. Mr Hobby consents to the inclusion in the report of the matters based on his information in the form and context in which it appears.

## Competent Persons Statement for RK Lithium Project MRE

The information in this report that relates to Mineral Resources is based on information compiled by Ms Millicent Canisius and Mr Anthony Wesson, both full-time employees of CSA Global. Mr Anthony Wesson is a Fellow and Chartered Professional of the Australasian Institute of Mining and Metallurgy and Ms Millicent Canisius is a Member of the Australasian Institute of Mining and Metallurgy. Mr Anthony Wesson and Ms Millicent Canisius have sufficient experience, relevant to the style of mineralisation and type of deposit under consideration and to the activity which they are undertaking, to qualify as Competent Persons as defined in the 2012 Edition of the Australasian Code for the Reporting of Exploration Results, Mineral Resources and Ore Reserves (JORC Code). Mr Anthony Wesson and Ms Millicent Canisius consent to the disclosure of the information in this report in the form and context in which it appears. Ms Millicent Canisius assumes responsibility for matters related to Sections 1 and 2 of JORC Table 1, while Mr Anthony Wesson assumes responsibility for matters related to Section 3 of JORC Table 1.

Readers are advised to refer to the following ASX release for details on the Mineral Resource: 28 Jun 2022, Reung Kiet Lithium Project - Inaugural Mineral Resource Estimate; and 02 Nov 2023, Reung Kiet Lithium Project Mineral Resource Update.

The Company confirms that it is not aware of any new information or data that materially affects the information included in the original market announcements and that all material assumptions and technical parameters continue to apply and have not materially changed. The Company confirms that the form and context in which the Competent Person's findings are presented have not been materially modified from the original market announcements.

## Notes and References (Capital Structure)

Data is generally sourced from professional and company reports and presentations, and PAM research. Any peer group comparisons comprise primarily listed companies.

1. The Capital structure is as at 31 July 2024, unless otherwise stated; 1a. The Market Capitalisation calculation

excludes 1,269,231 shares to be issued to Paul Lock and David Hobby, which is subject to shareholder approval; 1b. Convertible Note has a term of 12 months, yields 16% and is convertible into PAM shares at \$0.15c, see PAM ASX announcements dated 28 Mar, 2024 and titled 'Convertible Note Funding'.

2. Key shareholders as at 31 July, 2024, percentages are calculated based on the shares outstanding in 1a above. 2a. PAM Director David Docherty is a substantial shareholder of Sydney Equities Pty Ltd and Thai Goldfields NL; 2b. Pan Asia Metals Limited is obligated to pay Thai Goldfields NL (TGF) up to \$4m upon first WO<sub>3</sub> production at the Khao Soon Tungsten Project (see Note 3).

3. Pan Asia Metals Limited will pay Thai Goldfields NL (TGF) a \$2m cash payment upon first WO<sub>3</sub> production being achieved for a tungsten project on Special Prospecting Licence Application No. 1/2549 (TSPLA 1/2549) or its successor title over the historic Khao Soon Tungsten Mine and a \$2m cash payment upon first WO<sub>3</sub> production being achieved for a project on any tenement abutting (TSPLA 1/2549) or any successor title. David Docherty is a Director of Pan Asia Metals and TGF.

## Notes and References (Figures and Statistics)

Data is generally sourced from professional and company reports and presentations, and PAM research. Any peer group comparisons comprise primarily listed companies.

1. Wood Mackenzie, CRU, BGRIMM, SMM, Teck Copper Market Outlook (mid 2024), modified by PAM.
2. Wood Mackenzie, CRU, BGRIMM, SMM, Teck Copper Market Outlook (mid 2024), modified by PAM.
3. LME, ICE/Comex, SHFE, SMM, Wood Mackenzie, Teck Copper Market Outlook (mid 2024), modified by PAM.
4. LME, ICE/Comex, SHFE, SMM, Teck Copper Market Outlook (mid 2024), modified by PAM.
5. Geologic cross section of the Susana-Lince deposit showing copper orebodies (Acevedo et al. 1997; Alvarez 1999) from Shoji Kojima, Jose Astudillo, Juan Rojo, Dania Trista and Ken-ichiro Hayashi - Ore mineralogy, fluid inclusion, and stable isotopic characteristics of stratiform copper deposits in the coastal Cordillera of northern Chile, Mineralium Deposita (2003) 38: 208-216. Modified by PAM.
6. Schematic Geological Cross Section N-750 (Filo - Valdivia Sur) from Boric, R., Holmgren, C. & Wilson, N.S.F. & Zentilli, M., 2002 - The Geology of the El Soldado Manto Type Cu (Ag) Deposit, Central Chile; in Porter, T.M. (Ed), Hydrothermal Iron Oxide Copper-Gold & Related Deposits: A Global Perspective, Volume 2; PGC Publishing, Adelaide, pp185-205. Modified by PAM.
7. Houston, John, 'Evaporation in the Atacama Desert: An empirical study of spatio-temporal variations and their causes', Journal of Hydrology, November, 2006, [Online]: [https://www.researchgate.net/publication/228488058\\_Evaporation\\_in\\_the\\_Atacama\\_Desert\\_An\\_empirical\\_study\\_of\\_spatio-temporal\\_variations\\_and\\_their\\_causes](https://www.researchgate.net/publication/228488058_Evaporation_in_the_Atacama_Desert_An_empirical_study_of_spatio-temporal_variations_and_their_causes).

# Important Information



## Relevant ASX Releases

Readers are advised to refer to the following ASX releases for details on other technical data reported in this presentation:

### ROSARIO COPPER PROJECT

- 29 Jul 2024: Rosario Copper Project - High Grade Copper Secured
- 30 Jul 2024: Rosario Copper Project Presentation
- 13 Aug 2024: Rosario Copper - Option Agreement Signed

### TAMA ATACAMA LITHIUM PROJECT

- 28 Jul 2023: Tama-Atacama Brine-Clay Lithium Project
- 21 Aug 2023: Hilix Lithium Project, Fieldwork Begins
- 28 Aug 2023: Pink Lithium Project, 200km<sup>2</sup> Added to Project Area
- 18 Sep 2023: Tama Atacama Lithium, Solid Seismic Data Interpretations
- 08 Nov 2023: Tama-Atacama Lithium - Dolores Li Update
- 02 Jan 2024: Tama Atacama Lithium Option Agreements Signed
- 03 Jan 2024: Tama Atacama Lithium Presentation
- 08 Jan 2024: Tama Atacama and RK Lithium Update
- 12 Jan 2024: Tama Atacama Lithium Exploration Concession Grant
- 29 Jan 2024: Tama Atacama Lithium Exploration Concession Grant
- 05 Feb 2024: Tama Atacama Lithium Exploration Concession Grant
- 12 Feb 2024: Tama Atacama Lithium Exploration Concession Grant
- 18 Apr 2024: Tama Atacama Lithium - PAM to Submit RFI for 1200km<sup>2</sup>
- 10 Jul 2024: Tama Atacama Lithium - Exploration Concession Grant

### RK LITHIUM PROJECT

- 8 Oct 2020: PAM Projects - Technical Reports
- 21 Oct 2020: Positive Discussions regarding Reung Kiet Lithium Project with Phang Nga Provincial Government
- 18 Jan 2021: Drilling commences at Reung Kiet Lithium Project
- 01 Feb 2021: Reung Kiet Lithium Project - Drilling Update
- 23 Mar 2021: Drilling Update - Bang I Tum Lithium Prospect
- 25 Mar 2021: Drilling update - Reung Kiet Lithium Prospect
- 3 May 2021: Reung Kiet Lithium Project - Drilling Update

- 29 Jun 2021: Reung Kiet Drilling Update
- 16 Aug 2021: Reung Kiet Drilling Update
- 31 Aug 2021: Geothermal Li and Hard Rock Li-Sn Initiative
- 07 Sep 2021: Thick pegmatites interested Reung Kiet Lithium Prospect
- 14 Sep 2021: Drilling Update - Reung Kiet Lithium Prospect
- 28 Sep 2021: Drilling Update - Reung Kiet Lithium Project
- 03 Dec 2021: Drilling Update - Reung Kiet Lithium Project
- 07 Dec 2021: Drilling Update - Reung Kiet Lithium Project
- 09 Feb 2022 Drilling Update - Reung Kiet Lithium Project
- 02 Mar 2022 Drilling Update - Reung Kiet Lithium Project
- 22 Apr 2022: Drilling Update - Reung Kiet Lithium Project
- 10 May 2022: Revised Drilling Update - 22 April 2022
- 28 Jun 2022: RK Lithium Project - Inaugural Mineral Resource Estimate
- 11 Jun 2022: Drilling Update - Reung Kiet Lithium Project
- 27 Jul 2022: Reung Kiet Lithium Project - Exploration Target
- 18 Aug 2022: Drilling Update - Reung Kiet Lithium Project
- 05 Sep 2022: Grant of EPL No 19/2565 - Reung Kiet Lithium Project
- 21 Sep 2022: Bang I Tum Prospect - Exploration Update
- 12 Oct 2022: Drilling Update - Reung Kiet Lithium Project
- 24 Oct 2022: Bang I Tum Prospect - High Grade Lithium Results
- 02 Nov 2022: Reung Kiet Lithium Processing Test-Work Update
- 08 Nov 2022: RKLP-Exceptional Ore Sorting Test Work Results
- 22 Nov 2022: Exceptional Ore Sorting Test-Work Results Confirmed
- 23 Nov 2022: Reung Kiet Lithium Project - Drilling Update
- 19 Jan 2023: Reung Kiet Lithium - Metallurgical Test-work Results
- 02 Feb 2023: Reung Kiet Lithium - Drilling Update
- 28 Feb 2023: Bang I Tum Prospect Initiation of Drilling
- 03 Apr 2023: Reung Kiet Lithium Project Drilling Results
- 19 Apr 2023: Reung Kiet Lithium Project Mining Zones Declared
- 20 Apr 2023: Positive Roasting and Leaching Test-work Results
- 19 May 2023: Non-Binding MOU with VinES for Lithium Conversion Plant
- 22 May 2023: Reung Kiet Lithium Project Drilling Results

- 30 May 2023: Bang I Tum Lithium Prospect, New Zones Discovered
- 21 Jun 2023: Bang I Tum Lithium Prospect, Drilling Continues to Deliver
- 10 Jul 2023: Bang I Tum Lithium Prospect Exploration Target Update
- 14 Jul 2023: Bang I Tum Lithium Prospect Drill Results are Delivering
- 18 Jul 2023: RK Lithium Confirmatory Met Testwork Positive
- 31 Jul 2023: Pan Asia Metals and IRPC sign MOU
- 18 Aug 2023: RK Lithium, Exceptional Flotation Results
- 21 Aug 2023: Revised RK Lithium, Exceptional Flotation Results
- 31 Jul 2023: Pan Asia Metals and IRPC sign MOU
- 18 Aug 2023: RK Lithium, Exceptional Flotation Results
- 21 Aug 2023: Revised RK Lithium, Exceptional Flotation Results
- 07 Sep 2023: BT Lithium Prospect, Strong Li and Sn Results Continue
- 02 Nov 2023: Reung Kiet Lithium Project Mineral Resource Update
- 13 Dec 2023: RK Lithium Project - Waste to By-product Testwork
- 11 Jan 2024: RK Lithium Project Drilling Update
- 22 Feb 2024: RK Lithium Project - License Re-Application
- 09 May 2024: RK Lithium - KT License Grant and Discovery
- 24 May 2024: RK Lithium - KT East Discovery Expands
- 24 Jun 2024: RK Lithium Project, 1.5 x 0.5km Li Pegmatite Zone Identified
- 08 Jul 2024: RK Lithium Project - RK Property Secured
- 12 Aug 2024: RK Lithium Project - KT East Anomalous Zone Increases 2.8x

### KHAO SOON TUNGSTEN PROJECT

- 8 Oct 2020: PAM Projects - Technical Reports
- 22 Oct 2020: Khao Soon Tungsten Project Licence Update
- 30 Oct 2020: Khao Soon Tungsten Project - Drilling Update
- 30 Nov 2020: Khao Soon Tungsten Project Drilling Update
- 23 Dec 2020: Khao Soon Tungsten Project - Drilling Update
- 15 Jan 2021: Khao Soon Tungsten Project Drilling Update
- 24 Feb 2021: Strong Results from Khao Soon Tungsten Project
- 29 Mar 2021: Drilling Update- Khao Soon Tungsten Project
- 28 Apr 2021: Khao Soon Tungsten Project Drilling Update



# Explore a Better Future<sup>®</sup>

[panasiametals.com](https://panasiametals.com)

Copyright 2024 Pan Asia Metals Limited. All Rights Reserved.

For personal use only