

Quarterly Report

For the period ending 30 June 2024, dated 30 July 2024



For personal use only

ABOUT THE COMPANY

Citigold Corporation Limited (ASX:CTO) is an Australian gold exploration and development company located in northeast Australia. The Company's prime focus is the high-grade Charters Towers Gold Project. It is production-ready after successfully completing 100,000 ounces of gold production¹ test mining and establishing its mine site. The Company continues to advance its core activities including broad regional exploration programs, mine design, engineering, and working to restart its gold mine.

Our aim is to be a 300,000 plus ounces per annum ultra-low-cost gold producer using state-of-the-art technologies and efficiencies, all with the aim of returning substantial profits to shareholders in harmony with the local environment².

Citigold holds 175 square kms of prospective exploration grounds surrounding the Central Mine mineralisation area and is actively exploring new reefs to further increase mineral resources over time.

¹ See ASX Announcement dated 9 December 2020, [Mineral Resources and Ore Reserves 2020](#).

² See ASX Announcement dated 11 February 2019, [Updated December 2018 Quarterly Activities Report](#).

Exploration Update

Rock chip sampling is continuing over Citigold's Exploration Permits as part of the ongoing exploration program to define strike extensions of known mineralisation and to discover new areas of previously unknown mineralisation.

The latest rock chip results fall on two sub-blocks of EPM 18465, located nine kilometres south and southeast of Charters Towers.

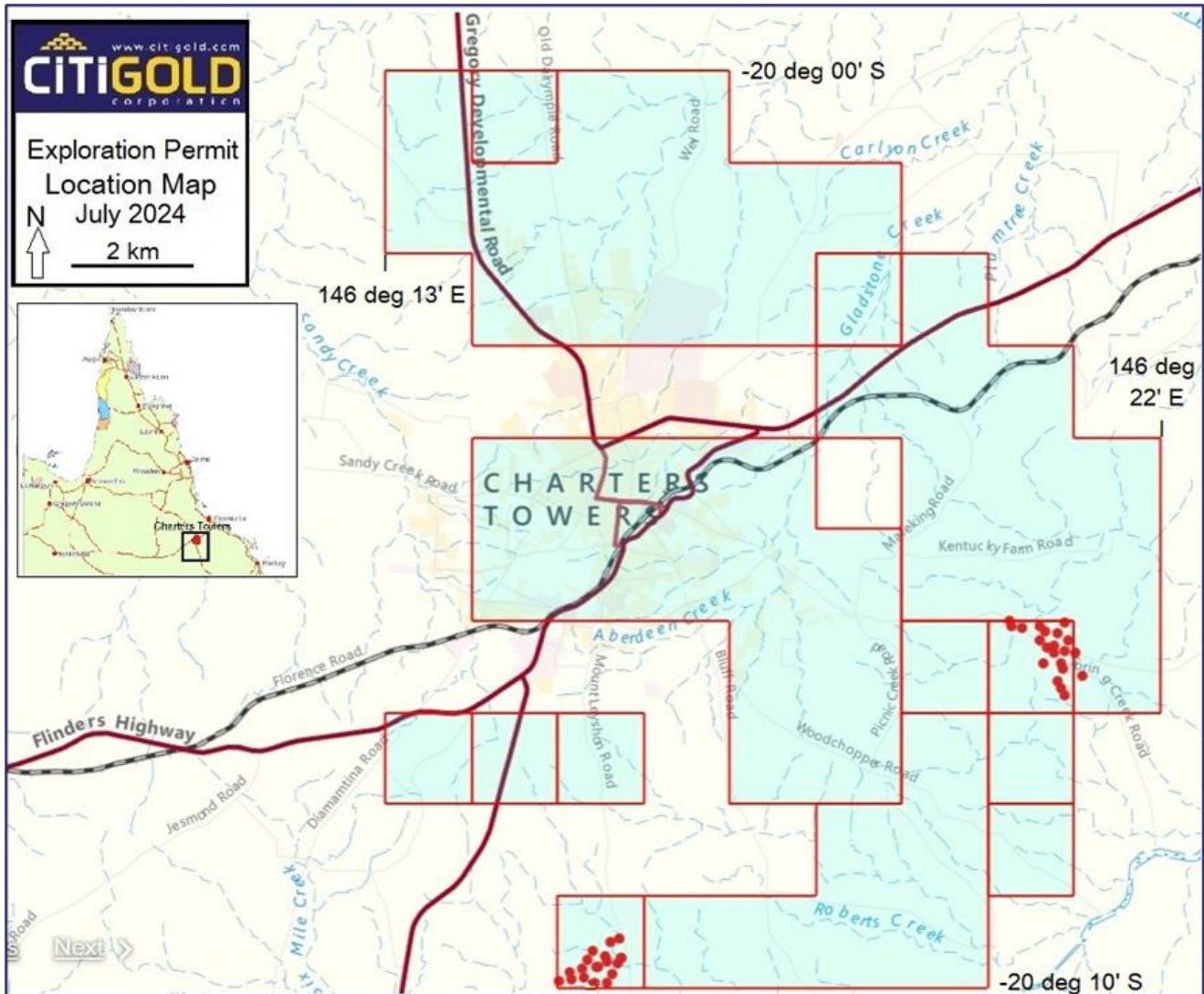


Figure 1. The location map of Citigold's Exploration Permits is shown in blue. Rock chip sample locations are shown as red dots.

A further forty samples in the current program have been assayed, of which 12 contained detectable gold, and of these 12, four are regarded as significantly anomalous.

For personal use only

For personal use only

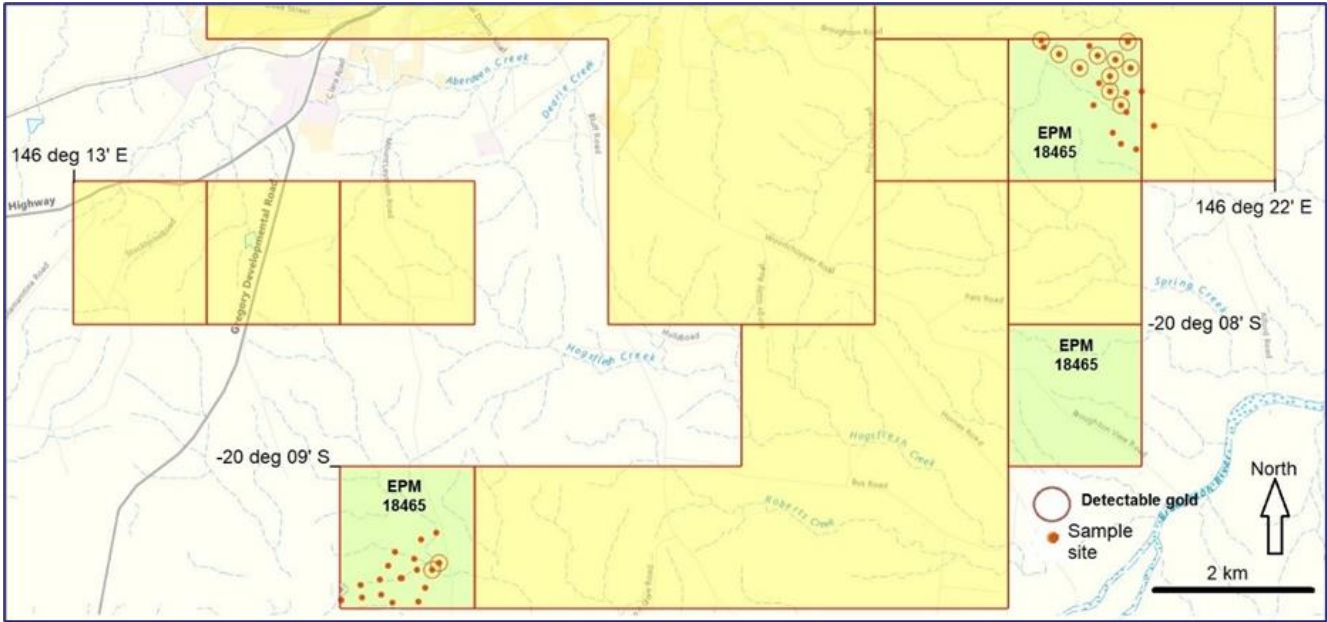


Figure 2. Rock chip sample locations are shown as red dots. Detectable gold samples are circled with red circles.

The highest anomaly was 0.42 g/t Au, with detectable gold spread over an area of approximately 1.5 x 1 kilometres (see Figure 3 below).

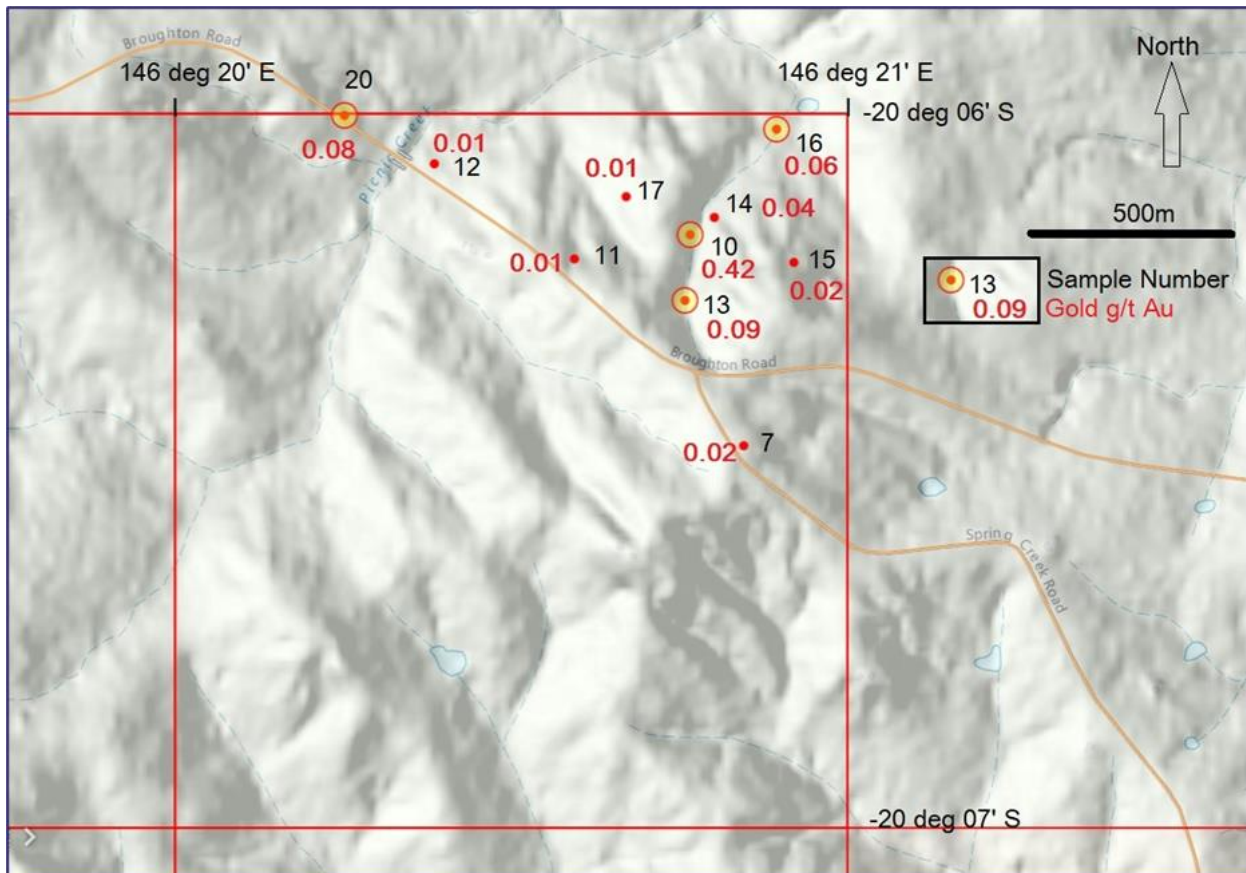


Figure 3. Map of the northern anomalous area, measuring approximately 1.5 x 1 km. Sample locations are shown as red dots and anomalous samples as red circles filled with yellow. Sample numbers are shown in black, and fire-assay gold results in red, in grams of gold per tonne (g/t Au).

Citigold’s Chairman, Mr Mark Lynch, stated: *“It is intriguing that there are no known gold deposits or historical workings that could be responsible for the anomalies. This is a new gold discovery, warranting follow-up. It confirms our view that there is still undiscovered gold mineralisation in and around the goldfield. While it is too early yet to know the significance and full extent of this new mineralisation, it is encouraging to know that new gold mineralisation is still being unearthed.”*

There are no associated copper, lead or zinc anomalies, although the copper, lead and zinc values in the anomalous samples are above the average of the non-anomalous samples, which indicates that the mineralisation may be late-stage lower-temperature gold-quartz mineralisation. This is supported by elevated values in the anomalous samples of other metals such as arsenic, bismuth, cobalt, chromium, potassium, nickel, thorium, titanium, vanadium and zinc. Elevated metal values and detectable gold sample coordinates are shown in Table 1.

CRITICAL MINERALS

As of December, 2023 the Australian Government considers 30 resource commodities to be *Critical Minerals* (Geoscience Australia, 2023) essential for modern technologies, economies or national security, and that have a supply chain at risk of disruption. Individual countries develop their own lists of critical minerals based on the relative importance of particular minerals to their industrial needs and strategic assessment of supply risks. In addition, assessments of mineral criticality reflect market and political conditions at a particular point in time and are subject to change. See: [Critical Minerals Strategy 2023–2030 | Department of Industry, Science and Resources](#).

The 30 Australian Critical Mineral commodities are high-purity alumina, antimony, arsenic, beryllium, bismuth, chromium, cobalt, fluorine, gallium, germanium, graphite, hafnium, indium, lithium, magnesium, manganese, molybdenum, niobium, platinum-group elements, rare-earth elements, rhenium, scandium, selenium, silicon, tantalum, tellurium, titanium, tungsten, vanadium and zirconium.

While gold is Citigold’s primary target, a watching brief is kept for Critical Minerals plus copper, lead, zinc, tungsten, and uranium. Pegmatite dykes are the most likely host rock in the Charters Towers area and these are routinely examined in field traverses for spodumene and lepidolite (lithium), beryl (beryllium), tourmaline (fluorine) and fluorite (fluorine). Uranium in the granites and granodiorites is usually undetectable (<10ppm). Samples were assayed for gold by 50g fire assay and for a suite of 36 elements, including 15 of Australia’s 30 Critical Minerals, by Inductively Coupled Plasma-Mass Spectrometer (ICP-MS).

Samples were 1-2kg of rock chips at each site from outcrop or float. Samples were sent to Australian Laboratory Services (‘ALS’) in Townsville for analysis by 50g fire assay (ALS Method Au-AA26) and a 35-element ICP-MS scan (ALS Method ME-ICP41).

Table 1 shows elevated levels of the critical minerals arsenic, bismuth, cobalt, chromium, titanium and vanadium.

The sample program is ongoing and results will be reported as they come to hand.

For personal use only

Element Analysed	Unit	Au	As	Bi	Co	Cr	Cu	K	Ni	Pb	Th	Ti	V	Zn	
		ppm	ppm	ppm	ppm	ppm	ppm	%	ppm	ppm	ppm	%	ppm	ppm	
Analytical method code		Au-AA26	ME-ICP41	ME-ICP41	ME-ICP41	ME-ICP41	ME-ICP41	ME-ICP41	ME-ICP41	ME-ICP41	ME-ICP41	ME-ICP41	ME-ICP41	ME-ICP41	
Average of non-anomalous samples		<0.01	0.39	<2	4.46	13.46	6.29	0.24	4.55	4.71	6.46	0.05	23.86	13.5	
SAMPLE No.	Latitude	Longitude													
7	20.106240	146.348525	0.02	<2	<2	11	56	23	0.52	17	6	20	0.16	63	34
10	20.101300	146.347212	0.42	2	<2	12	59	11	0.28	15	4	20	0.19	86	32
11	20.101875	146.344340	0.01	2	<2	11	56	10	0.23	16	4	20	0.16	78	31
12	20.099640	146.340878	0.01	3	<2	11	26	10	0.39	9	4	20	0.17	68	19
13	20.102846	146.347085	0.09	60	<2	11	19	9	0.35	12	14	20	0.01	34	26
14	20.100897	146.347801	0.04	14	2	7	34	13	0.41	11	7	30	0.05	40	14
15	20.101943	146.349777	0.02	15	4	7	35	15	0.44	10	8	30	0.06	42	15
16	20.098842	146.349340	0.06	32	<2	7	29	11	0.46	9	7	30	0.04	38	19
17	20.100428	146.345603	0.01	<2	<2	2	6	2	0.18	1	5	<20	0.02	18	7
20	20.098540	146.338618	0.08	<2	<2	4	8	3	0.15	1	6	<20	0.02	18	8
23	20.159723	146.263312	0.01	3	<2	5	12	8	0.29	4	14	<20	0.01	17	16
24	20.160569	146.262562	0.01	3	<2	5	9	7	0.3	2	14	<20	0.01	18	17

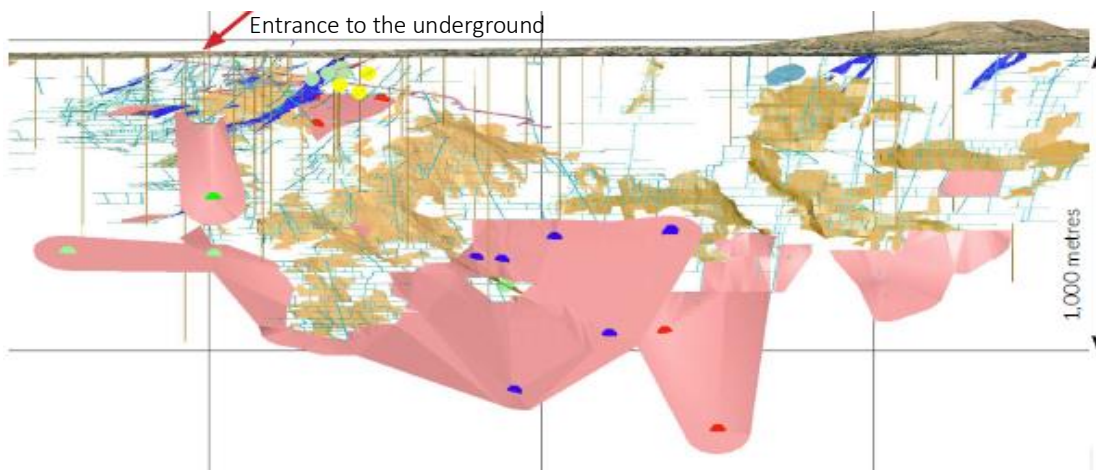
Anomalous
Elevated, above average

For personal use only

TABLE 1. Table of samples with detectable gold and their coordinates. Anomalous values are highlighted in yellow and elevated accompanying metal values are highlighted in green.

For further information, please see ASX Announcement: [Exploration Update](#), dated 29 July 2024.

The Company continues to optimise future plans for an intensive exploration program with priority areas identified from the current and previous exploration programs. Exploration analysis, preparation of studies, review and maintenance of data, tenement optimisation, and other exploration activities continued. During the Quarter, no new exploration drilling was undertaken. Normal regulatory compliance reporting for exploration, mine, and environmental continued during the Quarter.



ABOVE TOP: Photo of Citigold's Central mine site and the entrance to the underground ramp portal.

ABOVE: Shows the gold areas to be mined in **PINK** and, the **BROWN** areas were previously mined.

GREY lines are 1 kilometer grid spacing, large gold deposit is in **PINK** and mining gold starts at relatively shallow 300 metres deep.

Long section looking south, showing the drill pierce points through the Central Area Indicated Mineral Resource structures. Above diagram, see ASX announcement dated 9 December 2020, Mineral Resources & Ore Reserves 2020 Report.

The above diagram is based on estimates of mineral resources. The material assumptions and technical parameters underpinning the estimates continue to apply and have not materially changed.

GEOLOGY AND EXPLORATION

Mineral resources and reserves are summarised below¹:

CATEGORY	TONNES	GRADE	CUT-OFF	CONTAINED OUNCES
Inferred Mineral Resources*	32,000,000	14 g/t	3.0g/t	14,000,000
Indicated Mineral Resources (includes Probable Ore Reserves)	3,200,000	7.7 g/t	4.0 g/t	780,000
Probable Ore Reserves (derived from and contained within Indicated Mineral Resource)	2,500,000	7.7g/t	4.0 g/t	620,000

Citigold's Mineral Resources and Ore Reserves for the overall Gold Project are reported in accordance with the Australasian JORC Reporting Code 2012¹. Mineral Resources and Ore Reserves remained unchanged during the Quarter. The material assumptions and technical parameters underpinning the estimates continue to apply and have not materially changed¹.

MINE DESIGN AND ENGINEERING

Central Mine design and engineering continued to be optimised during the period. Other Central Mine design and engineering activities continued to progress including planning, scheduling, and optimisation reviews.

HEALTH, SAFETY, COMMUNITY AND ENVIRONMENT

Charters Towers Miners Junior Rugby League

Citigold is proud to sponsor the 2024 Charters Towers Miners Junior Rugby League teams, with the under 15 boys and under 16 girls representing Charters Towers in the Michael Morgan Cup rugby league competition held in Townsville.

Jupiter and the Prospecting Team

Citigold has a long history of contributing to the recognition of Indigenous achievements. After all, it was the young 10-year-old First Nations Australian 'Jupiter' who in 1871, as part of the prospecting team, discovered gold that led to the birth of Charters Towers in Queensland.

Citigold's recognition of Jupiter included commissioning two paintings in 1997 and 1999 by Marji Hill. The first painting depicts Jupiter as an elderly statesman of Charters Towers, and the second is an artist's impression of the discovery of gold in Mosman Creek by Jupiter and the prospecting team (right).

There were no Lost Time Injuries, significant environmental, health, or safety issues during the quarter.



For personal use only

CORPORATE

Financial Discussion

The Company has commenced working on the 2024 Annual Report which will be released once available.

Shareholders have funded the Company over many years. Management seeks to structure funding beneficial to the funder(s) and shareholders. There is interest by entities to join Citigold in the development of the gold mine. Citigold is continuing to work with parties who are at various stages of discussions regarding funding opportunities.

The Company has in the past undertaken broad shareholder share purchase plans and share placements. The Company further has the ability to raise funds from the forward sale of gold in the ground and drawing on loan facilities as previously announced.

Appendix 5B Disclosures

The Company's accompanying Appendix 5B (Quarterly Cash Flow Report) includes amounts in items 6.1 & 6.2 which constitute directors' accrued fees during the Quarter.

During the period, the Company made a payment of \$65,000 (capitalised), on exploration activities at its Charters Towers Gold Project, which included a regional exploration sampling program, desktop studies, review of historical data, and exploration technologies. Exploration payments totalling \$42,000 (expense) included tenement management costs, mining rent and environmental fees. Development payments totalling \$35,000 (capitalised) as reported in item 2.1(f) included mine design and engineering optimisation, scheduling, planning, reviewing data and economic evaluation etc. Development payments totalling \$4,000 (expense) included site management and maintenance costs. Payment for administration and corporate costs amounted to \$174,000 and included listing, compliance, consultants, administration, and project marketing activities.

The above activities were summarised in this quarterly report.

SUMMARY OF MINING TENEMENTS & AREAS OF INTEREST

The Consolidated Entity has a 100% control of the following mineral titles at Charters Towers as at 30 June 2024 and there were no acquisitions or disposals during the Quarter:

Exploration Permit Minerals	EPM 15964	EPM 15966	EPM 18465	EPM 18813	EPM 27287
Minerals Development Licenses		MDL 118	MDL 119	MDL 252	
Mining Leases	ML 1343	ML 1430	ML 1545	ML 10193	ML 10284
	ML 1344	ML 1472	ML 1585	ML 10196	ML 10335
	ML 1347	ML 1488	ML 10005	ML 10208	
	ML 1348	ML 1490	ML 10032	ML 10222	
	ML 1385	ML 1491	ML 10042	ML 10281	
	ML 1398	ML 1499	ML 10091	ML 10282	
	ML 1424	ML 1521	ML 10093	ML 10283	

For further information contact:

Niall Nand

Company Secretary

Level 1, 1024 Ann Street (PO Box 1133),
Fortitude Valley, QLD, 4006 Australia

+61 7 3839 4041

nnand@citigold.com

www.citigold.com

Authorised for release: by Mark Lynch, Chairman, Citigold Corporation Limited.

Cautionary Note: This release may contain forward-looking statements that are based upon management's expectations and beliefs in regards to future events. These statements are subject to risk and uncertainties that might be out of the control of Citigold Corporation Limited and may cause actual results to differ from the release. Citigold Corporation Limited takes no responsibility to make changes to these statements to reflect change of events or circumstances after the release. Images incorporated in this report are intended solely for illustrative purposes and the images may not precisely represent the current state of affairs.

Competent Person Statement: The following statements apply in respect of the information in this report that relates to **Exploration Results, Mineral Resources and Ore Reserves:** The information is based on, and accurately reflects, information compiled by team leader Mr Christopher Alan John Towsey, who is a Corporate Member and Fellow of the Australasian Institute of Mining and Metallurgy. Mr Towsey is a consultant and currently independent of Citigold Corporation Limited, having previously been a Director of the Company from 2014-June 2016. Input into the team for Ore Reserves is provided by Mr Garry Foord, a mining engineer and Fellow of the Australasian Institute of Mining and Metallurgy. Mr Foord was formerly the registered mine manager for the Charters Towers underground operations. Both have the relevant experience in relation to the mineralisation being reported on to qualify as a Competent Person as defined in the Joint Ore Reserves Committee (JORC) Australasian Code for Reporting of Exploration Results, Identified Mineral Resources and Ore Reserves 2012. Mr Towsey and Mr Foord have consented in writing to the inclusion in this report of the matters based on the information in the form and context in which it appears. **For full details see Technical Report on the Mineral Resources and Reserves at www.citigold.com click Mining >Technical Reports >Mineral Resources and Ore Reserves 2020.**

For personal use only

Appendix 5B

Mining exploration entity or oil and gas exploration entity quarterly cash flow report

Name of entity

CITIGOLD CORPORATION LIMITED

ABN

30 060 397 177

Quarter ended ("current quarter")

30 June 2024

Consolidated statement of cash flows	Current quarter \$A'000	Year to date (12 months) \$A'000
1. Cash flows from operating activities		
1.1 Receipts from customers	-	-
1.2 Payments for		
(a) exploration & evaluation	(42)	(504)
(b) development	(4)	(12)
(c) production	-	-
(d) staff costs	(15)	(47)
(e) administration and corporate costs	(174)	(414)
1.3 Dividends received (see note 3)	-	-
1.4 Interest received	-	-
1.5 Interest and other costs of finance paid	-	-
1.6 Income taxes paid	-	-
1.7 Government grants and tax incentives	-	-
1.8 Other (provide details if material)	-	(107)
1.9 Net cash from / (used in) operating activities	(235)	(1,084)

2. Cash flows from investing activities		
2.1 Payments to acquire or for:		
(a) entities	-	-
(b) tenements	-	-
(c) property, plant and equipment	-	-
(d) exploration & evaluation	(65)	(209)
(e) investments	-	-
(f) other non-current assets	(35)	(107)

Mining exploration entity or oil and gas exploration entity quarterly cash flow report

Consolidated statement of cash flows		Current quarter \$A'000	Year to date (12 months) \$A'000
2.2	Proceeds from the disposal of:		
	(a) entities	-	-
	(b) tenements	-	-
	(c) property, plant and equipment	-	-
	(d) investments	-	-
	(e) other non-current assets	-	-
2.3	Cash flows from loans to other entities	-	-
2.4	Dividends received (see note 3)	-	-
2.5	Other (provide details if material)	-	-
2.6	Net cash from / (used in) investing activities	(100)	(316)

3.	Cash flows from financing activities		
3.1	Proceeds from issues of equity securities (excluding convertible debt securities)	-	695
3.2	Proceeds from issue of convertible debt securities	-	-
3.3	Proceeds from exercise of options	-	-
3.4	Transaction costs related to issues of equity securities or convertible debt securities	-	-
3.5	Proceeds from borrowings	92	1,007
3.6	Repayment of borrowings	(140)	(935)
3.7	Transaction costs related to loans and borrowings	-	-
3.8	Dividends paid	-	-
3.9	Other (provide details if material)	450	635
3.10	Net cash from / (used in) financing activities	402	1,402

4.	Net increase / (decrease) in cash and cash equivalents for the period		
4.1	Cash and cash equivalents at beginning of period	154	219
4.2	Net cash from / (used in) operating activities (item 1.9 above)	(235)	(1,084)
4.3	Net cash from / (used in) investing activities (item 2.6 above)	(100)	(316)
4.4	Net cash from / (used in) financing activities (item 3.10 above)	402	1,402

Mining exploration entity or oil and gas exploration entity quarterly cash flow report

Consolidated statement of cash flows		Current quarter \$A'000	Year to date (12 months) \$A'000
4.5	Effect of movement in exchange rates on cash held	-	-
4.6	Cash and cash equivalents at end of period	221	221

5.	Reconciliation of cash and cash equivalents at the end of the quarter (as shown in the consolidated statement of cash flows) to the related items in the accounts	Current quarter \$A'000	Previous quarter \$A'000
5.1	Bank balances	221	154
5.2	Call deposits		
5.3	Bank overdrafts		
5.4	Other (provide details)		
5.5	Cash and cash equivalents at end of quarter (should equal item 4.6 above)	221	154

6. Payments to related parties of the entity and their associates

- 6.1 Aggregate amount of payments to related parties and their associates included in item 1
- 6.2 Aggregate amount of payments to related parties and their associates included in item 2

Current quarter \$A'000
41
21

Note: if any amounts are shown in items 6.1 or 6.2, your quarterly activity report must include a description of, and an explanation for, such payments

Mining exploration entity or oil and gas exploration entity quarterly cash flow report

7. Financing facilities <i>Note: the term "facility" includes all forms of financing arrangements available to the entity.</i> <i>Add notes as necessary for an understanding of the sources of finance available to the entity.</i>	Total facility amount at quarter end \$A'000	Amount drawn at quarter end \$A'000
7.1 Loan facilities	4,165	3,279
7.2 Credit standby arrangements		
7.3 Other (please specify)		
7.4 Total financing facilities		

7.5 **Unused financing facilities available at quarter end** 886

7.6 Include in the box below a description of each facility above, including the lender, interest rate, maturity date and whether it is secured or unsecured. If any additional financing facilities have been entered into or are proposed to be entered into after quarter end, include a note providing details of those facilities as well.

Secured loan facility with PAL Group Pty Ltd ATF The I and F Trust is \$2.665 million, 12% per annum interest rate and maturity extended to 31 January 2025. Secured loan facility with The Rigby Superannuation Fund and Ross Neller and Rebecca Agius and Neller Superannuation Fund and Luke Berthelsen and P&C Rigby Superannuation Fund and Francis Rigby is \$1.5 million, 2.25% per month interest rate and maturity extended to 30 September 2025.

8. Estimated cash available for future operating activities	\$A'000
8.1 Net cash from / (used in) operating activities (item 1.9)	(235)
8.2 (Payments for exploration & evaluation classified as investing activities) (item 2.1(d))	(65)
8.3 Total relevant outgoings (item 8.1 + item 8.2)	(300)
8.4 Cash and cash equivalents at quarter end (item 4.6)	221
8.5 Unused finance facilities available at quarter end (item 7.5)	886
8.6 Total available funding (item 8.4 + item 8.5)	1,107
8.7 Estimated quarters of funding available (item 8.6 divided by item 8.3)	3.69
<i>Note: if the entity has reported positive relevant outgoings (ie a net cash inflow) in item 8.3, answer item 8.7 as "N/A". Otherwise, a figure for the estimated quarters of funding available must be included in item 8.7.</i>	
8.8 If item 8.7 is less than 2 quarters, please provide answers to the following questions:	
8.8.1 Does the entity expect that it will continue to have the current level of net operating cash flows for the time being and, if not, why not?	
Answer: N/a	
8.8.2 Has the entity taken any steps, or does it propose to take any steps, to raise further cash to fund its operations and, if so, what are those steps and how likely does it believe that they will be successful?	
Answer: N/a	

Mining exploration entity or oil and gas exploration entity quarterly cash flow report

8.8.3 Does the entity expect to be able to continue its operations and to meet its business objectives and, if so, on what basis?

Answer: N/A

Note: where item 8.7 is less than 2 quarters, all of questions 8.8.1, 8.8.2 and 8.8.3 above must be answered.

Compliance statement

- 1 This statement has been prepared in accordance with accounting standards and policies which comply with Listing Rule 19.11A.
- 2 This statement gives a true and fair view of the matters disclosed.

Date: 30 July 2024

Authorised by: Mark Lynch, Chairman
(Name of body or officer authorising release – see note 4)

Notes

1. This quarterly cash flow report and the accompanying activity report provide a basis for informing the market about the entity's activities for the past quarter, how they have been financed and the effect this has had on its cash position. An entity that wishes to disclose additional information over and above the minimum required under the Listing Rules is encouraged to do so.
2. If this quarterly cash flow report has been prepared in accordance with Australian Accounting Standards, the definitions in, and provisions of, *AASB 6: Exploration for and Evaluation of Mineral Resources* and *AASB 107: Statement of Cash Flows* apply to this report. If this quarterly cash flow report has been prepared in accordance with other accounting standards agreed by ASX pursuant to Listing Rule 19.11A, the corresponding equivalent standards apply to this report.
3. Dividends received may be classified either as cash flows from operating activities or cash flows from investing activities, depending on the accounting policy of the entity.
4. If this report has been authorised for release to the market by your board of directors, you can insert here: "By the board". If it has been authorised for release to the market by a committee of your board of directors, you can insert here: "By the [name of board committee – eg Audit and Risk Committee]". If it has been authorised for release to the market by a disclosure committee, you can insert here: "By the Disclosure Committee".
5. If this report has been authorised for release to the market by your board of directors and you wish to hold yourself out as complying with recommendation 4.2 of the ASX Corporate Governance Council's *Corporate Governance Principles and Recommendations*, the board should have received a declaration from its CEO and CFO that, in their opinion, the financial records of the entity have been properly maintained, that this report complies with the appropriate accounting standards and gives a true and fair view of the cash flows of the entity, and that their opinion has been formed on the basis of a sound system of risk management and internal control which is operating effectively.