

Presentation for RIU Sydney Resources Round-up

OzAurum Resources Ltd (**OzAurum** or the **Company**) (ASX: **OZM**) is pleased to advise that the Company is presenting at the RIU Sydney Resources Round-up being held at the Hyatt Regency Sydney on 7 – 9 May 2024.

OzAurum Managing Director and CEO, Andrew Pumphrey, will be delivering the presentation, a copy of which is attached to this announcement, on Wednesday 8 May 2024.

For Further Information please contact:

Andrew Pumphrey
Managing Director + CEO
+61 419 965 976

This ASX Announcement was approved and authorised by OzAurum's Managing Director, Andrew Pumphrey.

About OzAurum

OzAurum Resources Ltd (ASX: OZM) is a Western Australian explorer with advanced gold projects located 130 km northeast of Kalgoorlie and projects in Minas Gerais, Brazil, prospective for Lithium, Niobium and REE. The Company's objective is to make a significant discovery that can be brought into production.

For more information on OzAurum Resources Ltd and to subscribe to our regular updates, please visit our website at www.ozaurumresources.com or contact our Kalgoorlie office via email on info@ozaurumresources.com.

For personal use only

RIU Resources Round-up Conference

7th - 9th May 2024

OzAurum Resources Limited
(ASX: OZM)

Important information

This presentation has been prepared by OzAurum Resources Limited (ACN: 643 244 544) and its subsidiary (“Company”) and is for information purposes only. No representation or warranty, express or implied, is made as to the fairness, accuracy, relevance completeness or correctness of the information, opinions and conclusions contained in this presentation and nothing contained in the Presentation is, or may be relied upon as a promise, representation or warranty, whether as to the past or the future. This presentation has been prepared without taking into account the investment objectives, financial situation or particular needs of any participant. Past performance is no guarantee of future performance. The Company hereby excludes all warranties that can be excluded by law.

This presentation contains prospective financial material which is predictive in nature and may be affected by inaccurate assumptions or by known or unknown risks and uncertainties and may differ materially from results ultimately achieved. This presentation contains general background limited information about the Company and its activities current as at the date of this presentation. The information in this presentation is in summary form only and does not contain all the information necessary to fully evaluate any transaction or investment.

Full details of exploration results can be found in the Company’s ASX Announcements listed in Appendix 1.

This is not an offer

This presentation is for information purposes only. Neither this presentation nor the information in it constitutes an offer, invitation, solicitation or recommendation to subscribe for or purchase any security and does not form the basis of any contract or commitment. This presentation does not constitute investment advice and has been prepared without taking into account the recipient’s investment objectives, financial circumstances or particular needs and the opinions and recommendations in this presentation are not intended to represent recommendations of particular persons. All recipients should consider seeking appropriate professional advice in reviewing this presentation and the Company.

Forward looking statements

This presentation contains forward-looking statements. All statements other than those of historical facts included in this presentation are forward-looking statements. Where the Company expresses or implies an expectation or belief as to future events or results, such expectation or belief is expressed in good faith and believed to have a reasonable basis. However, forward-looking statements are subject to risks, uncertainties and other important factors, which could cause actual results performance or achievements or industry results to differ materially from any future results performance or achievements expressed, projected or implied by such forward-looking statements. Such risks include, but are not limited to, gold and other metals price volatility, currency fluctuations, as well as political and operational risks and governmental regulation and judicial outcomes. The Company does not undertake any obligation to release publicly any revisions to any information or any forward-looking statement in this presentation of any changes in events, conditions or circumstances on which any such forward-looking statement is based. Undue reliance should not be placed on any forward looking statements.

Reliance on third party information

The views expressed in this presentation contain information that has been derived from publicly available sources that have not been independently verified. No representation or warranty is made as to the accuracy, completeness or reliability of the information. This presentation should not be relied upon as a recommendation or forecast by the Company.

Investment highlights – focus on Discovery + Development

Advanced, 100%-owned* Lithium projects in Brazil

Boca Rica Project

Spodumene zone identified +6m true width

Spodumene only grades up to 1.16% LiO₂

Diamond drilling commenced

Strike extensive LCT pegmatite swarms within project area

Past production of tantalite, beryl, tourmaline, feldspar

OzAurum Niobium + REE Applications

50,000ha consolidated application area

Adjacent to Carbonatite Niobium and Phosphate Mining Operations

Interpreted circular features identified – potential for carbonatites

OzAurum Advanced Gold Projects – 94,000m Drilling since IPO

- Mulgabbie North + Patricia
- Located in Eastern Goldfields WA
- Advanced gold projects – exploration upside



Brazil Projects



Figure: BRAZIL Project Location plan

* Full details, including the material terms of acquisition, can be found in the Company's ASX Announcement on 15 March 2024.



Corporate structure & team – extensive experience

Capital Structure

159M
Shares on issue
ASX: OZM

\$7.9M
Market Cap
At \$0.05/share

\$1.44M
Cash
(As at 31 March 2024)

Nil
Debt
(As at 30 June 2023)

\$6.5M
Enterprise Value

33.5M Unlisted Options
8.0M Ex-Price \$0.375 cps
7.25M Ex-Price \$0.23 cps
18.25M Ex-Price \$0.11 cps

Directors & Management

Jeff Williams **Non-Executive Chairman**
40+ years experience

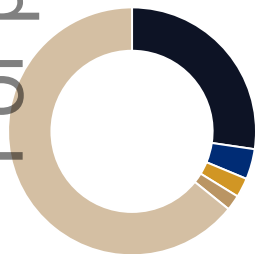
Andrew Pumphrey **CEO - Managing Director**
30+ years experience

Andy Tudor **Non-Executive Director (NXM: Managing Director)**
35+ years experience

Stephen Hewitt-Dutton **CFO - Company Secretary**
25+ years experience

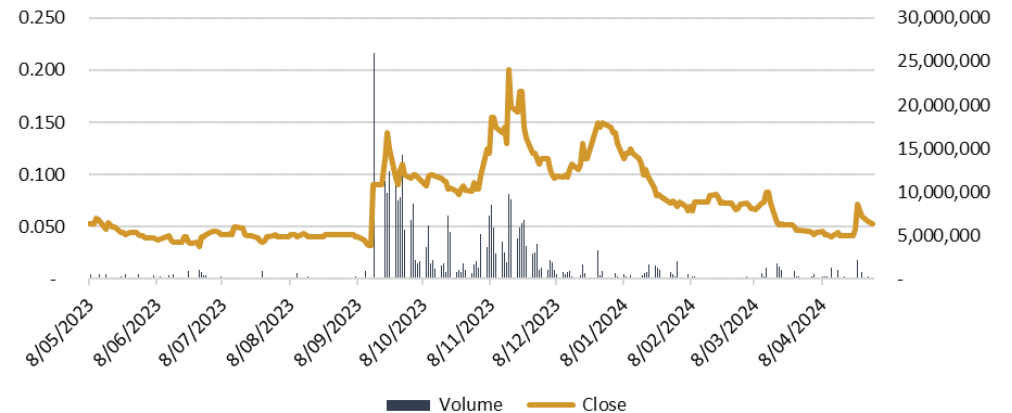
Major Shareholders

For personal use only



- 27.3% Andrew Pumphrey
- 4.0% C & A Jackson
- 2.5% Celtic Capital Pte Ltd
- 2.0% Bedivere Holdings Pty Ltd

Share Price and Volume - 12 Months to 6 May 2024



Strategic location – Minas Gerais State Brazil

Eastern Brazilian Pegmatite Province

- OzAurum's Brazil Lithium Project – strategically located and in the heart of Eastern Brazilian Pegmatite Province – Minas Gerais State

Success of ASX listed Lithium explorer Latin Resources

Existing Lithium producers Sigma + CBL 200km north of OZM

*Sigma Lithium Grota do Cirilo open pit mining, Reserves 54.8 Mt @ 1.44% LiO₂ planned production rate 107,000 tpa Lithium Carbonate Equivalent "LCE". Concentrate trucked to Port of Vitoria

*CBL Mina da Cachoeira underground mine concentrate trucked to their Divisa Alegre plant 180km's north produce a LCE at 1,500 tpa.

Minas Gerais State – Significant Mining State of Brazil with iron ore + pig iron production BHP (Samarco) + Vale exported through Port of Vitoria

- Excellent infrastructure sealed highway/road network, hydroelectric power reticulated throughout the state, ample water. Major export Port of Vitoria 250km only southeast.



Figure: Brazil + State of Minas Gerais

* See Sigma Lithium website project summary for details on targeted production rate etc <https://sigmalithiumresources.com>

* See CBL website for company and project details- <http://cblitio.com.br>

Brazil Lithium Strategy

Governador Valadares Pegmatite District

- Large pegmatite district – Mica Schist hosted
- Extensive fieldwork completed by OZM evaluating opportunities in this district and other pegmatite belts in Brazil
- Field checked over 100 past and current pegmatite operating mines within 6,000km² GV area
- Excellent team lead by our OZM Brazil General Manager - Sergio Cardoso Dos Santos based in Governador Valadares
- Established an exploration base in centre of the area near Boca Rica Project with onsite core processing facility etc
- Continuously evaluating projects and currently in advanced negotiations
- Business Development in Brazil - Dr Joao Hippertt

For personal use only

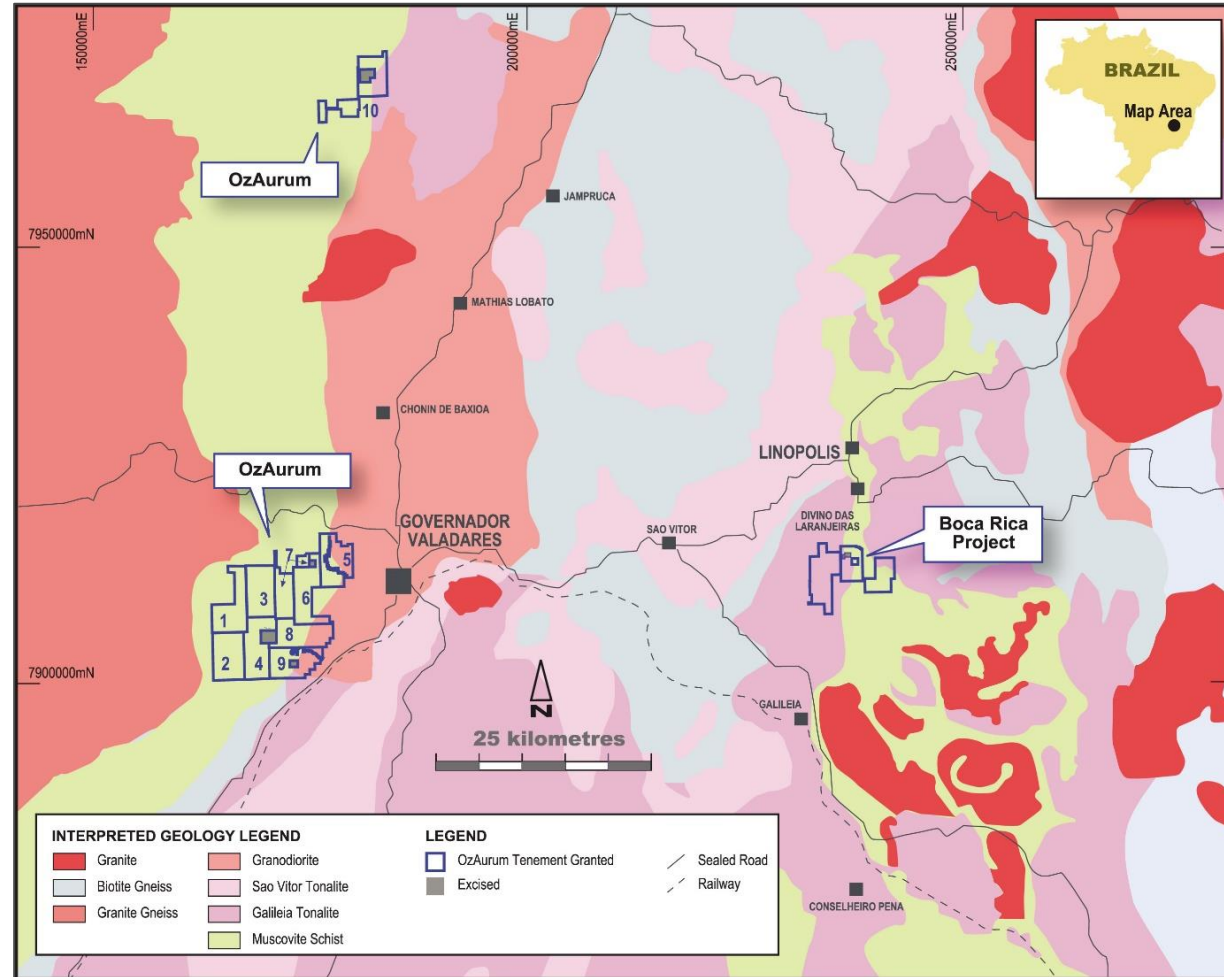


Figure: Governador Valadares Pegmatite District

Boca Rica Project

Unlimited Potential

For personal use only

3,871 ha Project Area offers scale with extensive pegmatite swarms

Historically mined tantalite, beryl, tourmaline + feldspar

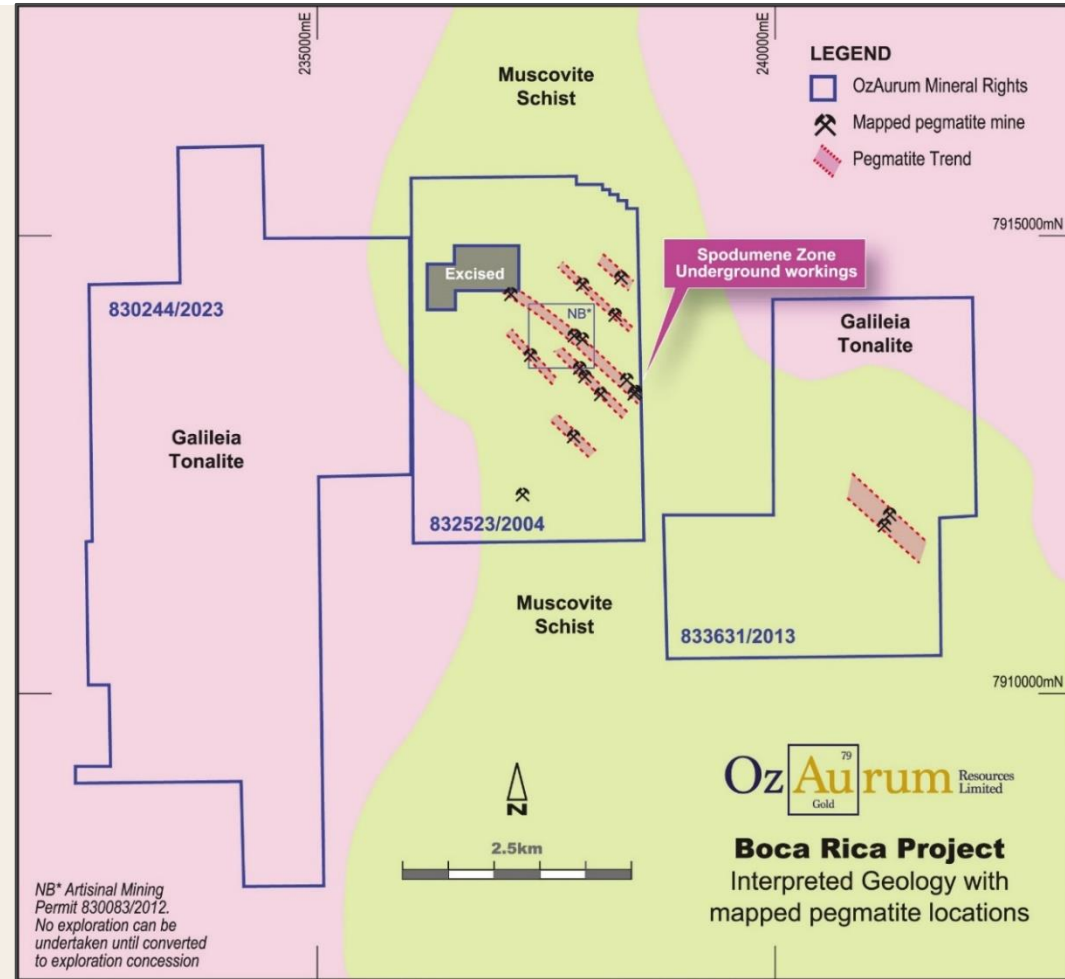
No previous exploration on project presents unique opportunity for discovery

Strike extensive LCT pegmatites, north-west striking + late intrusions extending up to 1.7kms with sharp contacts

Classic geological setting for lithium deposits

- Exploration impacted by Brazil weather events in January + February this year

Figure: Boca Rica Project interpreted geology with pegmatite locations recently mapped



Boca Rica Mine

Spodumene Zone identified

- +6m wide spodumene zone identified in crosscut at the Boca Rica underground mine

Spodumene crystals up to 1m in length within zone

Sampling of Spodumene only lithium grades up to 1.16% LiO₂

Diamond drilling commenced with 1st hole in progress

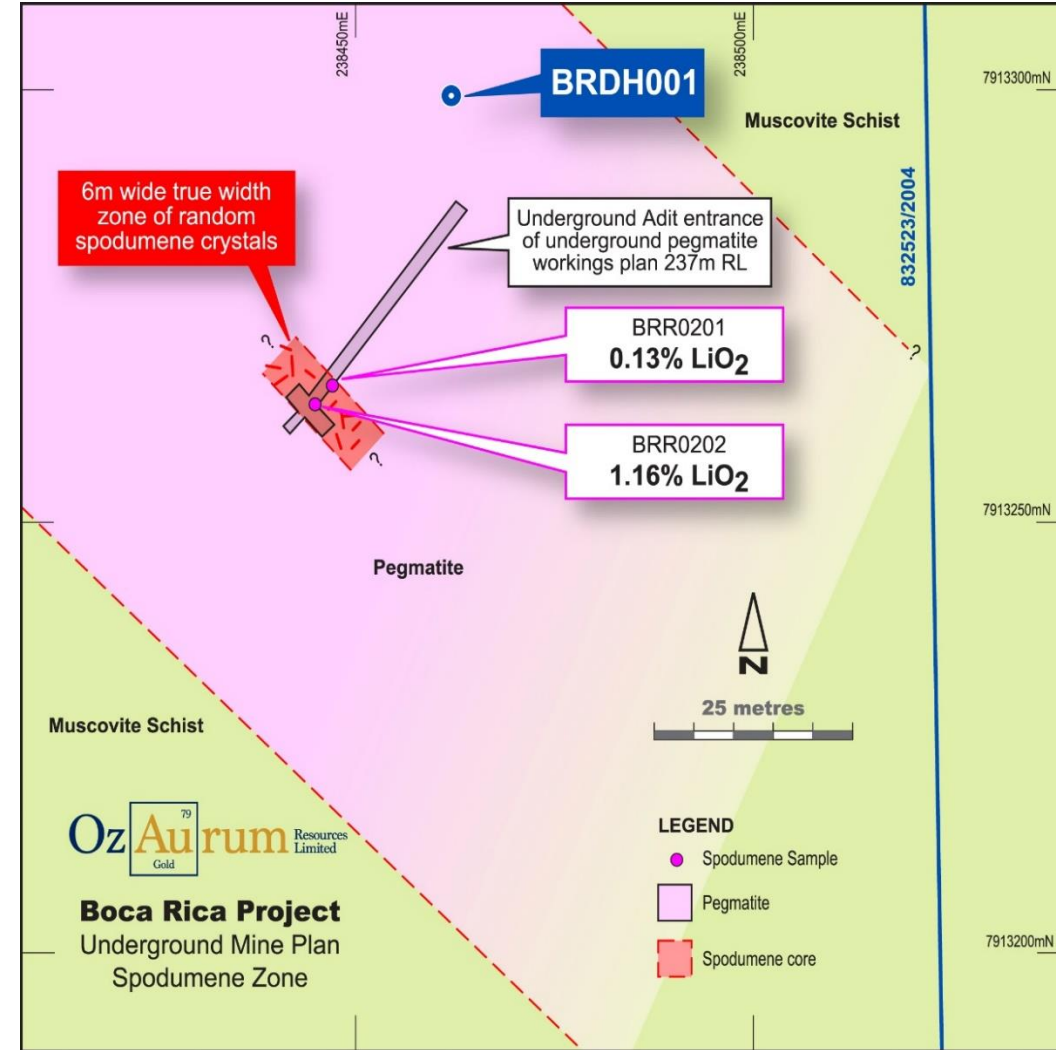


Figure: Spodumene Zone Boca Rica underground mine plan with interpreted geology

Niobium + REE Project Areas Brazil - Generative Exploration Opportunities

Catalao Niobium + REE Project

For personal use only

- 100% OZM applications 32,000 ha
- Brazil dominates world Niobium supply
- Catalao I + II carbonatite complexes host significant resources of Niobium and phosphate
- CMOC operation at Catalao I producing ferroniobium
- Targeting interpreted circular features identified within OZM tenure – potential for carbonatite intrusions Niobium + REE
- First pass exploration– rockchip + soil geochemistry
- Grant of tenure expected to take 2 months

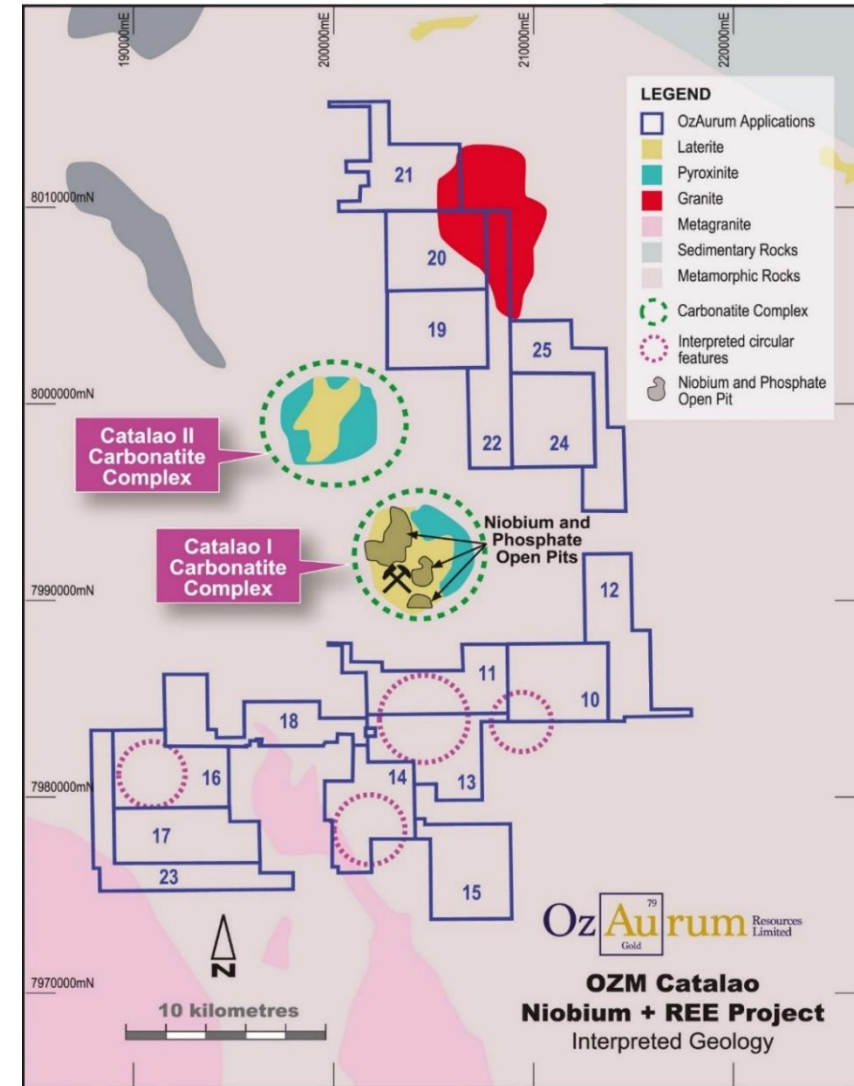


Figure: Interpreted geology of Catalao Project Area

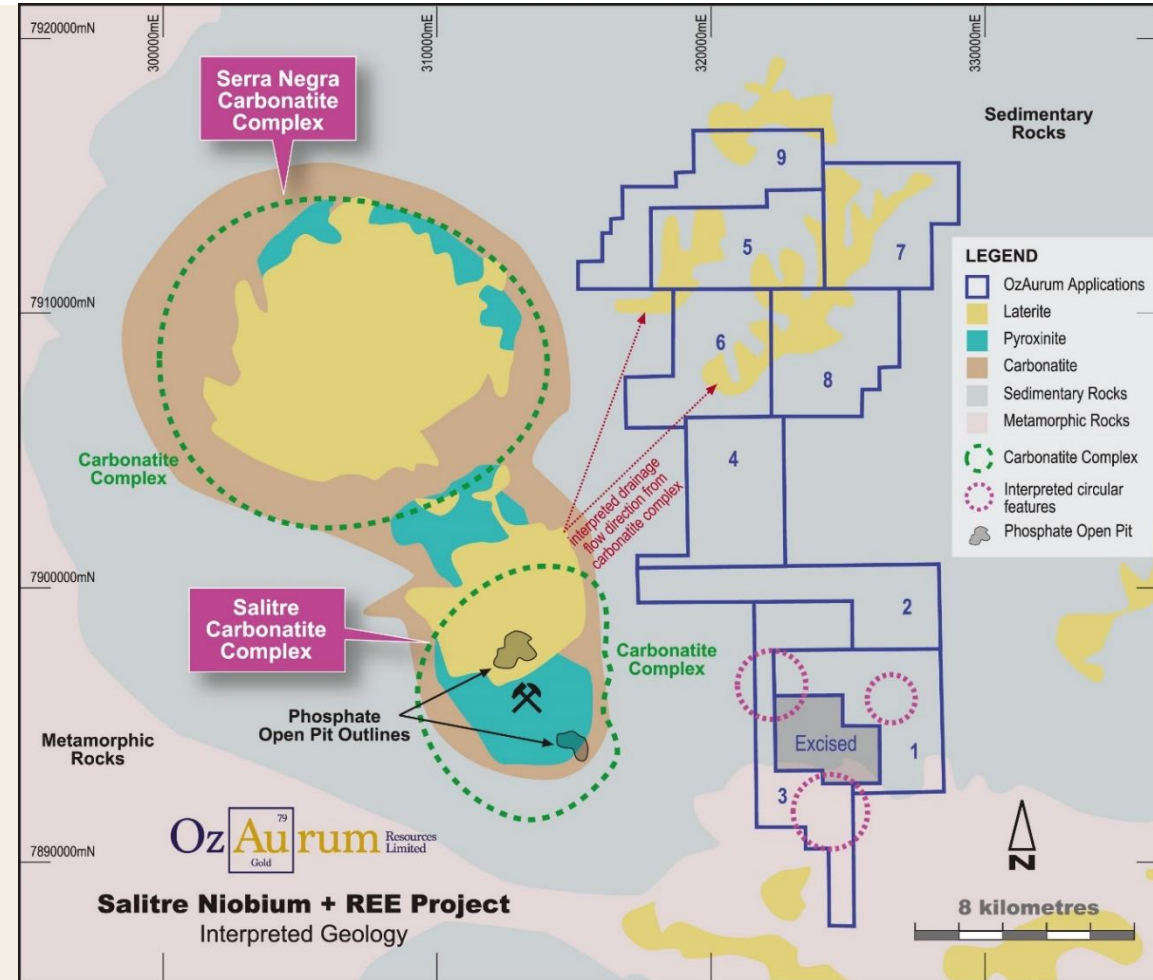
Niobium + REE Project Areas Brazil - Generative Exploration Opportunities

Salitre Niobium + REE Project

Figure: Interpreted geology of Salitre Project Area

For personal use only.

- 100% OZM applications 18,000ha
- Targeting interpreted circular features identified within OZM tenure – potential for carbonatite intrusions
- Targeting interpreted laterite hosted Niobium + REE in a Paleo drainage erosional model off carbonatite complex downslope
- First pass exploration – rockchip + soil geochemistry
- Generative by nature innovative and low-cost generative exploration opportunities with the potential to deliver significant upside
- Grant of tenure expected to take 2 months



OZM Gold Mulgabbie North + Patricia

Two advanced, 100%-owned gold projects in Western Australia

Mulgabbie North Gold Project

8km strike of unlimited potential for multiple deposits in a defined gold corridor

*Maiden Resource 268,000 oz's - 11.6Mt @ 0.70 g/t Au classified for the Heap Leach Scoping Study

High-grade Reverse Circulation (RC) and Diamond drilling (DD) gold results over **2.2km strike**

High-grade AC gold results over **4.2km along Relief Shear** – targets for RC drilling into fresh rock

Tenure abuts operating NST Carosue Dam (NST.ASX) 4.0 Mtpa Mill

Patricia High-Grade Gold Project

High-grade gold project with limited historical exploration

RC and Diamond drill testing - Open at depth

Historical Production (1930-37) **5,384 oz gold – 42 g/t Au**

93,833M Combined RC and AC drilling completed to date

*See OZM ASX Announcement 18th July 2023 for more details

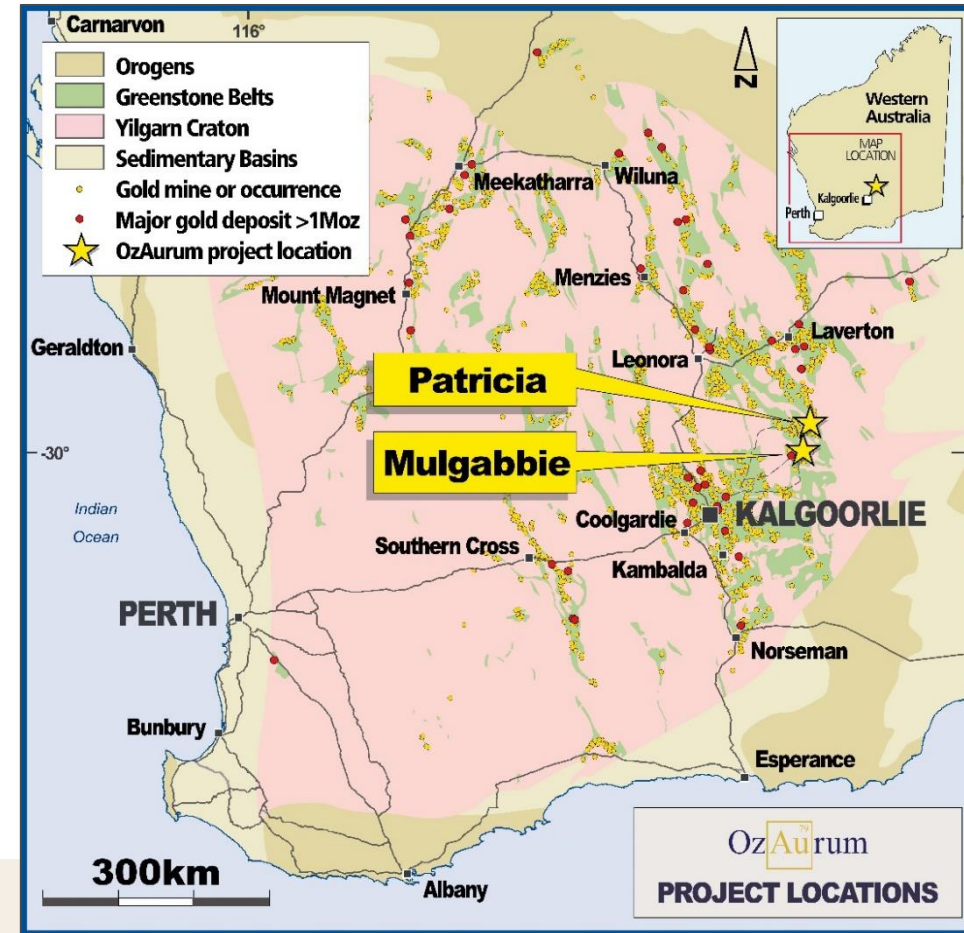


Figure: WA Project Location plan

Mulgabbie North – Exploration Potential widespread gold mineralisation

Right host rocks, extensive alteration and mineralisation

For personal use only.

Exploration discovery upside

4.2km long x up to 150m wide zone of widespread gold mineralisation along the Relief Shear situated in gravity low trough similar to Carosue Dam corridor of riches.

Gaps between prospects + extensions for follow up RC drilling

Mulgabbie North Intermediate – felsic volcanoclastic host rocks part of Carosue Dam stratigraphy, extensive sericite alteration along the 4.2 km long Relief Shear, with hematite alteration in some areas

Late clastic basin unconformity intersected in diamond holes

Intrusive Porphyries seen in RC drilling

3D + 2D Seismic Interpretation + 3D model identified four significant North - South faults

All NST Carosue Dam gold deposits (3.5 mill oz's) occur on similar interpreted North - South fault positions and cross faults

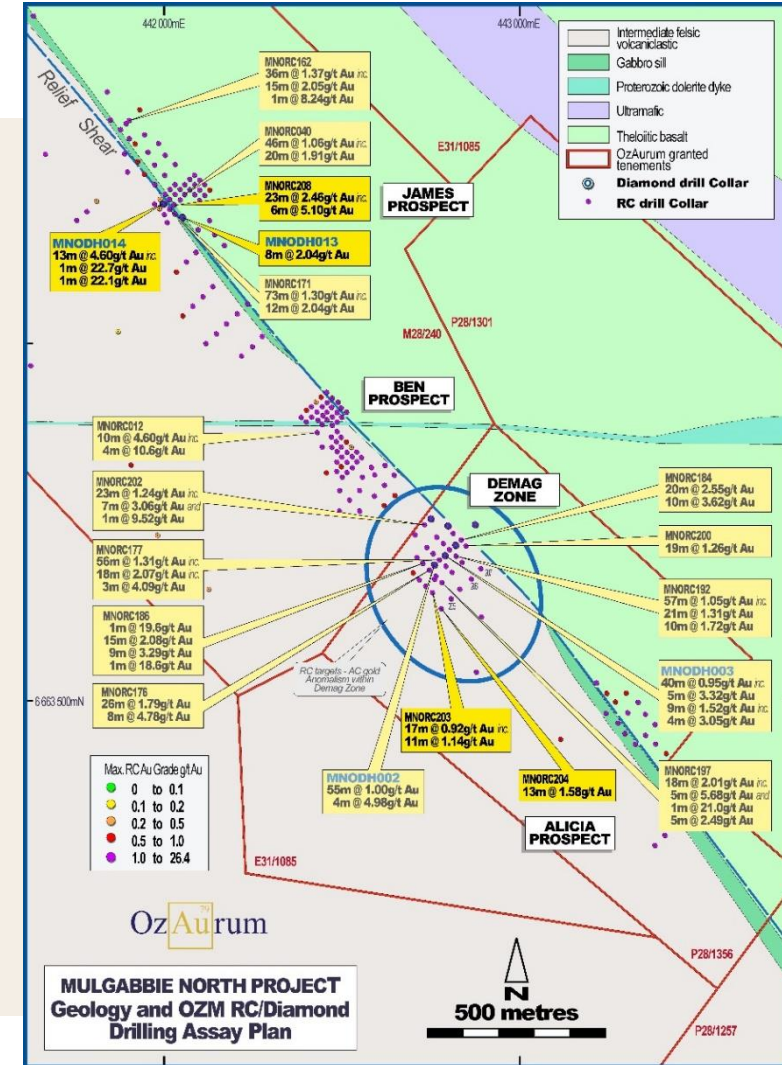


Figure: Mulgabbie North significant RC drilling results

Patricia – high grade gold project

Potential high grade gold discovery opportunity

- **100% owned** situated northeast (NE) of Kalgoorlie + 40km NE of Mulgabbie
- Granted **Mining Lease M31/487**
- Historical production (1930-1937) of 5,384 oz's gold – **41 g/t Au**
- Targeting high grade gold mineralisation at depth
- 4m @ 38.08 g/t Au**– (from 99m within **8m @ 20.90 g/t Au**) including **1m @ 93.90 g/t Au** – PTORC 002
- Previous exploration limited at depth

For personal use only

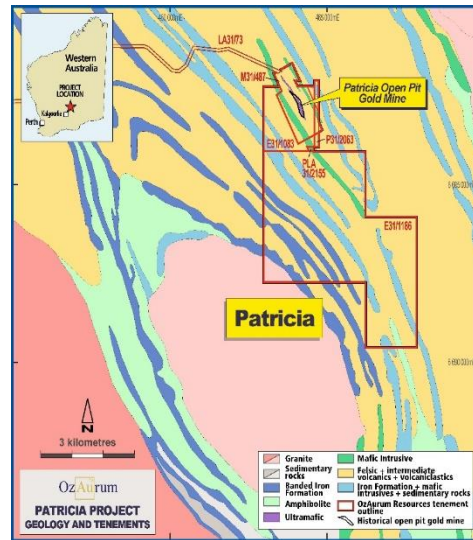


Figure: Patricia Project Plan

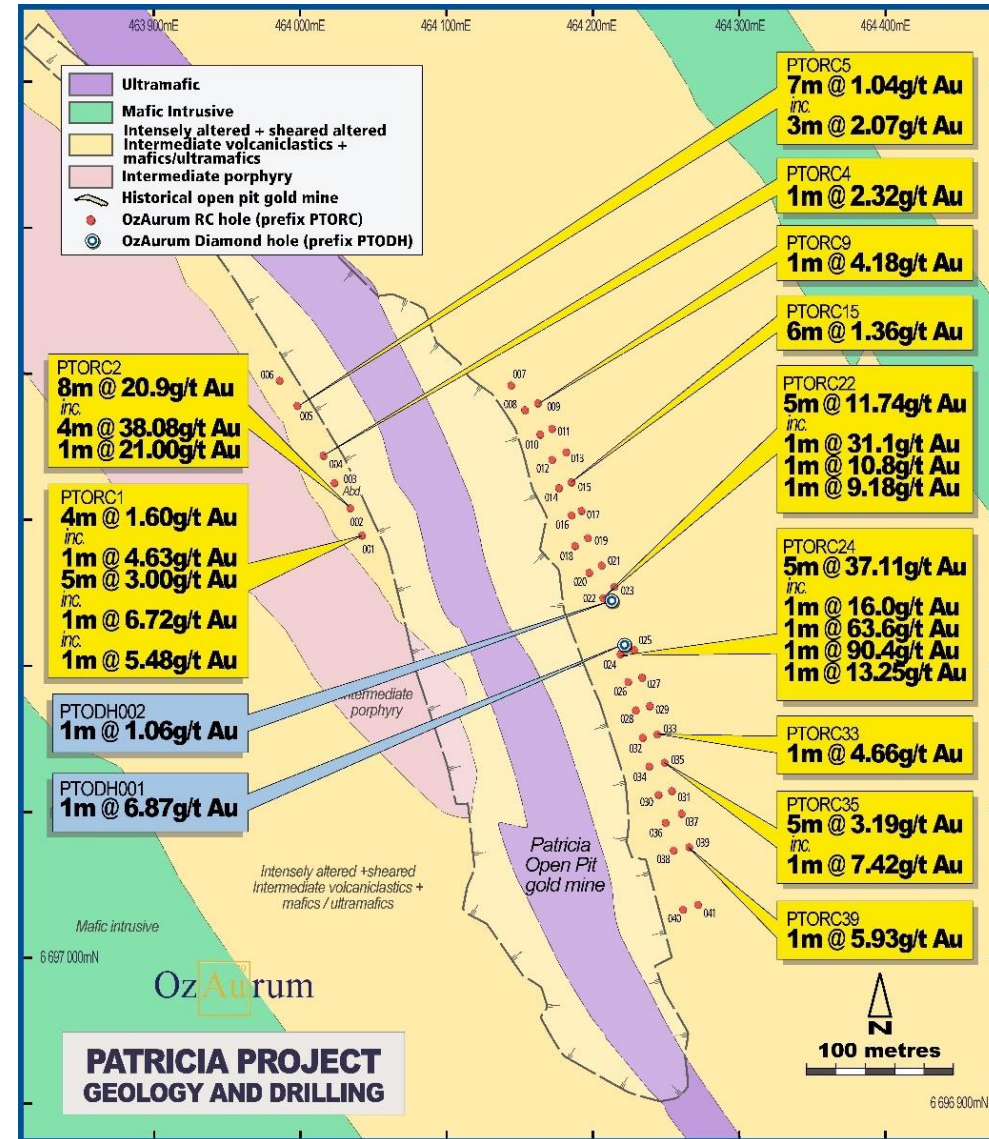


Figure: Patricia Gold Project Drill results

Why Invest in OZM?

Brazil Lithium + Western Australia Gold

For personal use only

Proven track record of putting all the money in the ground

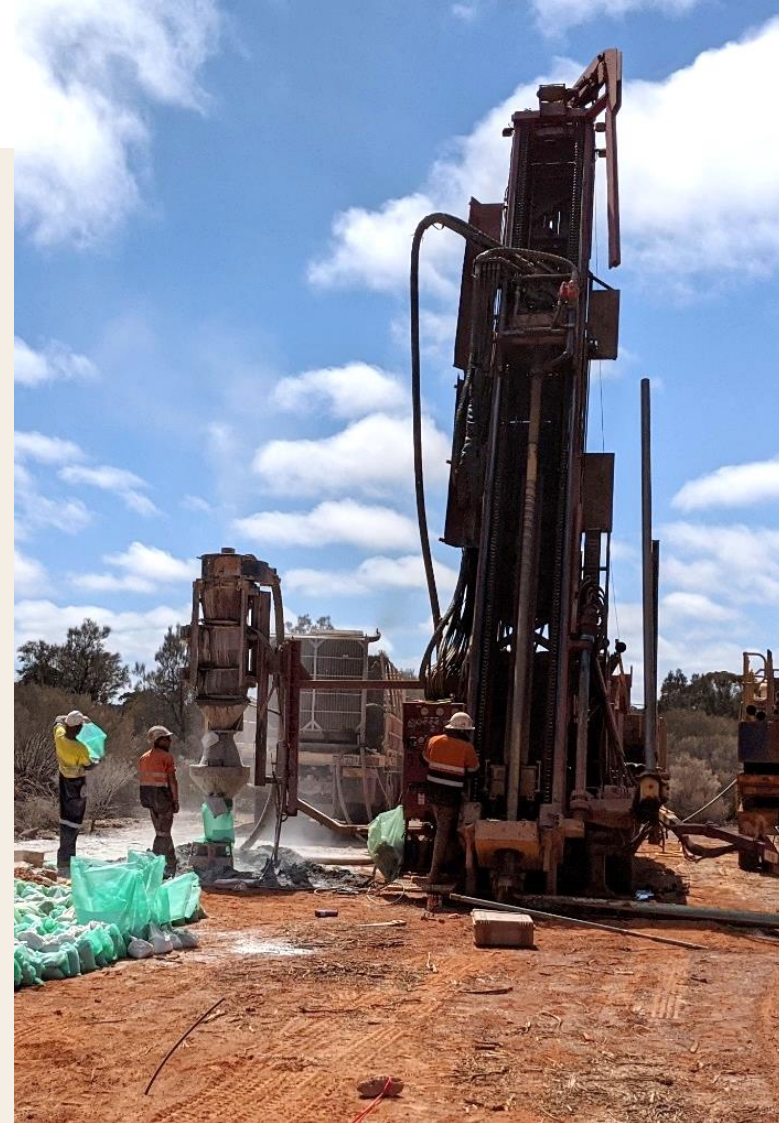
Potential significant lithium discovery

Active project acquisition strategy – Brazil lithium

Brazil Niobium and REE potential

Brazil excellent infrastructure + mining jurisdiction

Western Australian Gold exposure well located advanced projects with exploration upside



For personal use only



For further information,
please contact:

MD + CEO

Andrew Pumphrey

andrew@ozaurumresources.com

+61 8 9093 0039

PO Box 10396, Kalgoorlie 6430

Appendix

Full details of the Company's drilling results

Table 1: OzAurum Mulgabbie North Drilling result ASX Announcement dates

ASX Announcement Date	Drill Hole Reference
08-Mar-2021	MNORC009 – MNORC017
15-Mar-2021	MNOAC001 – MNOAC031
29-Mar-2021	MNOAC032 – MNOAC131
12-Apr-2021	MNORC018 – MNORC038
24-May-2021	MNOAC132 – MNOAC204
31-May-2021	MNORC039 – MNORC064
21-Jun-2021	MNOAC205 – MNOAC334
13-Jul-2021	MNORC065 – MNORC080
19-Aug-2021	MNORC081 – MNORC104
24-Sep-2021	MNORC109 – MNORC110
08-Nov-2021	MNORC105 – MNORC108, MNORC111 – MNORC124
21-Feb-2022	MNORC125 – MNORC172
21-Apr-2022	MNORC173 – MNORC183
02-Sep-2021	MNOAC335 – MNOAC514
16-Dec-2021	MNOAC515 – MNOAC883
17-May-2022	MNOAC884 – MNOAC898
16-Jun-2022	MNODH002 – MNODH002
12-Jul-2022	MNORC184 – MNORC193, MNODH003 – MNODH003
31-Aug-2022	MNORC194 – MNORC202, MNODH004 – MNODH005
27-Sep-2022	MNODH006
22 Nov 2022	MNODH007 – MNODH009
8 Feb 2023	MNORC203 – MNORC208, MNODH010 – MNODH014

Table 2: OzAurum Patricia Drilling result ASX Announcement dates

ASX Announcement Date	Drill Hole Reference
11-Aug-2021	PTORC001 – PTORC009
23-Sep-2021	PTORC010 – PTORC035
17-May-2022	PTODH001 – PTODH002

Table 3: OzAurum Boca Rica results ASX Announcement dates

ASX Announcement Date	Results
15-Mar-2024	Rock Chip results

Competent Persons Statement

The information in this report that relates to lithium rock chip Exploration Results is based on information compiled by Jeremy Peters who is a Fellow of The Australasian Institute of Mining and Metallurgy, a Chartered Professional Mining Engineer and Geologist of that organisation and a full time employee of Burnt Shirt Pty Ltd. Mr Peters has sufficient experience relevant to the style of mineralisation and type of deposit under consideration and to the activity which he is undertaking to qualify as a Competent Person as defined in the 2012 Edition of the 'Australasian Code for Reporting of Exploration Results, Mineral Resources and Ore Reserves'. Mr Peters consents to the inclusion in the report of the matters based on his information in the form and context in which it appears.

Other information in this report that relates to exploration results is based on information compiled by Andrew Pumphrey who is a Member of the Australian Institute of Geoscientists and is a Member of the Australasian Institute of Mining and Metallurgy. Andrew Pumphrey is a full-time employee of OzAurum Resources Ltd and has sufficient experience which is relevant to the style of mineralisation and type of deposit under consideration and to the activity which he is undertaking to qualify as a Competent Person as defined in the 2012 edition of the "Australasian Code for Reporting of Exploration Results, Mineral Resources and Ore Reserves". Mr Pumphrey has given his consent to the inclusion in this report of the matters based on the information in the form and context in which it appears.

OzAurum confirms it is not aware of any new information or data that materially affects the information included in the original market announcements, and that all material assumptions and technical parameters underpinning the estimates in the relevant market announcements continue to apply and have not materially changed. The Company confirms that the form and the context in which the Competent Persons findings are presented have not been materially modified from the original announcements.

The information relating to the mineral resource is extracted from the Company's ASX announcement dated 18 July 2023 and is available to view on the Company's website. The Company confirms that it is not aware of any new information or data that materially affects the information included in the original market announcement and, in the case of estimates of Mineral Resources, that all material assumptions and technical parameters underpinning the estimates in the relevant market announcement continue to apply and have not materially changed. The Company confirms that the form and context in which the Competent Person's findings are presented have not been materially modified from the original market announcement.