

For personal use only

# 2023 Annual General Meeting Presentation

# CT Product Suite

**CT MERIDIAN Platform**

**Customisable Solution**

**Multi-Vertical**

- Disaster Management
- Structural Monitoring
- Signage Management
- Facility Management

**CALLISTO Platform & Products**

**Ready to Use Temperature Monitoring Solution**

**Food and Beverage**

- Restaurants
- Supermarkets /Convenience Stores
- Commercial Kitchens
- Food Catering Services

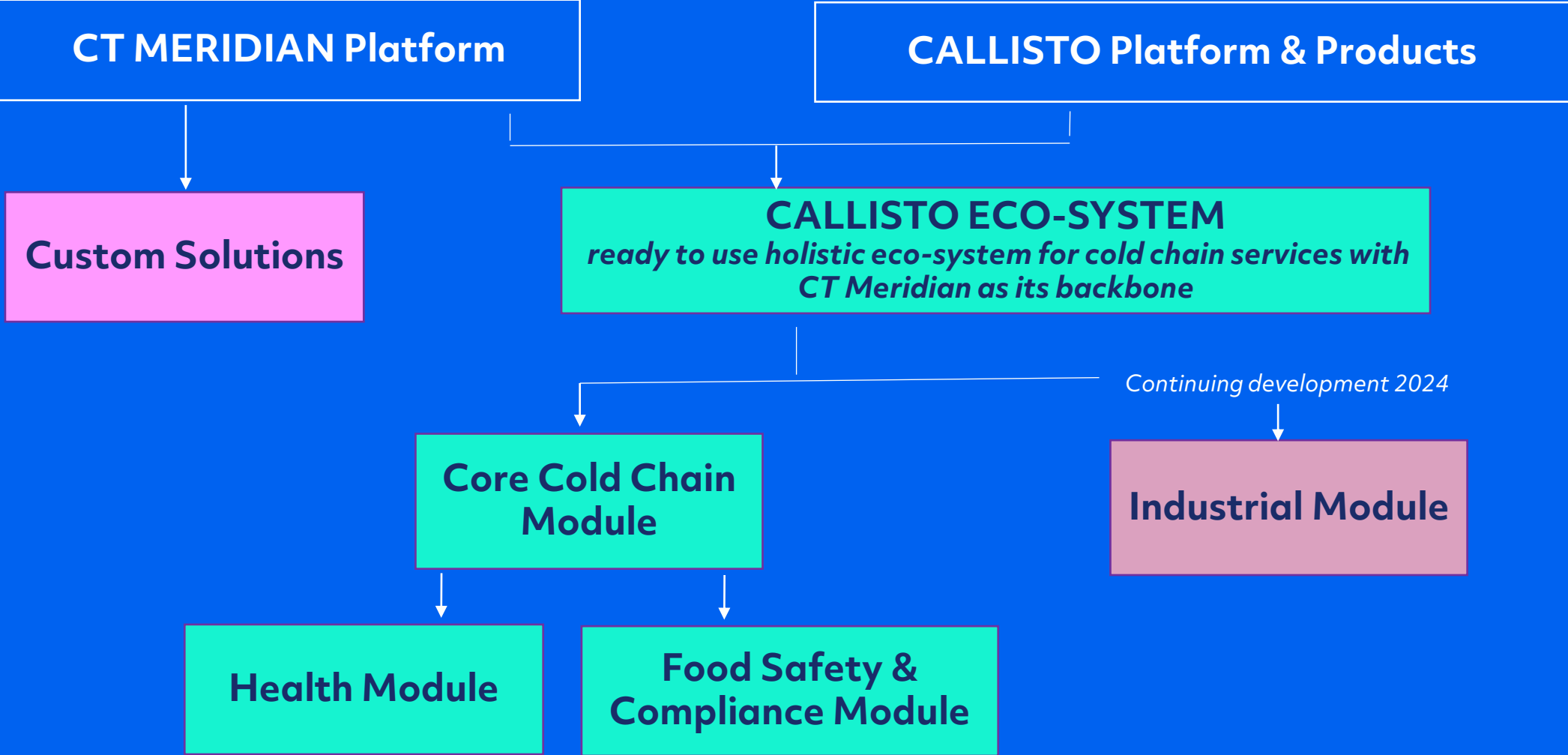
**Health Care**

- Pharmacies
- Hospitals
- Medical Research Labs
- Vaccine Monitoring

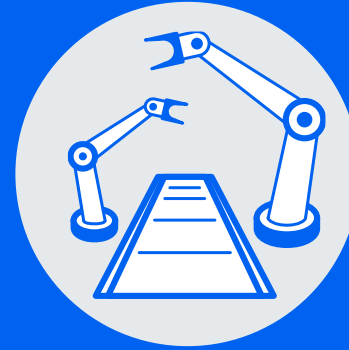
For personal use only

# CT Product Roadmap 2023 & Beyond

For personal use only



# Callisto Eco-system



## Ready to Use **Solutions**

- Holistic Eco-system for Cold Chain Monitoring
- Utilises MeridanCT Platform as backbone
- Utilises hardware devices developed and manufactured by CT for seamless integration.

# Callisto Platform Modules

Simple installation with Drastic Improvements

# Core Cold Chain Module

## Key Features



### Easy to Install

CT's Smart Device's (LoRa and LPWan) are wireless battery-powered IoT devices, designed for easy install. Simply turn on the device and install it near your application to provide continuous automated monitoring. Monitor temperatures as low as -180c.



### Compliance Alerts

Benefit from temperature threshold alerts sent to you via SMS and/or email, and record any corrective actions. Setup manual temperature monitoring reminders.



### Compliance Management

Migrate from paper-based forms to digital forms.



### Smart Analytics

CT's advanced analytics and alerts provide insights to empower your organisation to proactively detect refrigeration asset failures, minimise maintenance costs and reduce product wastage.



### Visualisation & Reporting

Dynamic visualisation and reporting platform for desktop and mobile, allowing you to easily share information with key stakeholders, and generate data for any defined time period.



### Secure & Encrypted

Benefit from CT's proprietary encryption algorithm and protocols to ensure your data is safe and secure. We take data sovereignty seriously, and only host data within Australian datacentres.

# Callisto Health Module

## Key Features

All the same key features as Core Cold Chain Module, plus.....



### Compliance Alerts

- Increased temperature checking frequency.
- Automated alerts for non-compliance instances.
- Compliance & monitoring that adheres to Strive for 5 and QCPP requirements.



### Administration

- Remote monitoring capabilities.
- Multi organisation monitoring.
- Secure API 's for seamless integration to other systems.



### Compliance Management

- Create unlimited digital forms to help you centralise and manage your vaccine compliances and other Pharmacy task management requirements.

# Callisto Food Safety & Compliance

## Key Features

All the same key features as Core Cold Chain Module, plus.....



### Hardware

- Portable Carme handheld device that operates on LoRaWan network to spot check food temperatures from -35c to 250c.
- Portable LoRaWan device with LED display to monitor and report food cool-down processes.
- Hands-free or fixed smart TV display for in-kitchen monitoring.
- GPS enabled devices to monitor assets on the move.



### Compliance Management

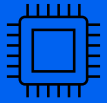
- Fixed Asset Monitoring.
- Allergen tracking.
- Food prep checklists.
- Process monitoring: cooldown, endpoint and hot holding.
- Menu management.
- Staff list and workflow management.
- Industry specific compliance reports that capable digital signatures.
- Customisable reports .



# Callisto Industrial Module

## Key Features

Integration of Callisto platform direct to refrigeration and air-conditioning controllers to measure and monitor refrigeration assets & energy efficiency.



### Hardware

Utilises CT Clamps to integrate with Smart Meters such as DENT and CT's Gallactic gateway.



### Controllers

- Danfoss
- Carel
- Emerson



### Secure & Encrypted

Proprietary encryption algorithm and protocols ensure your data is safe and secure. We take data sovereignty seriously, and only host data within Australian datacentres.



### Smart Analytics

CT's advanced analytics and alerts provide insights to empower your organisation to proactively detect refrigeration asset failures, minimise maintenance costs and reduce product wastage.



### Visualisation & Reporting

Dynamic visualisation and reporting platform for desktop and mobile, allowing you to easily share information with key stakeholders, and generate data for any defined time period.

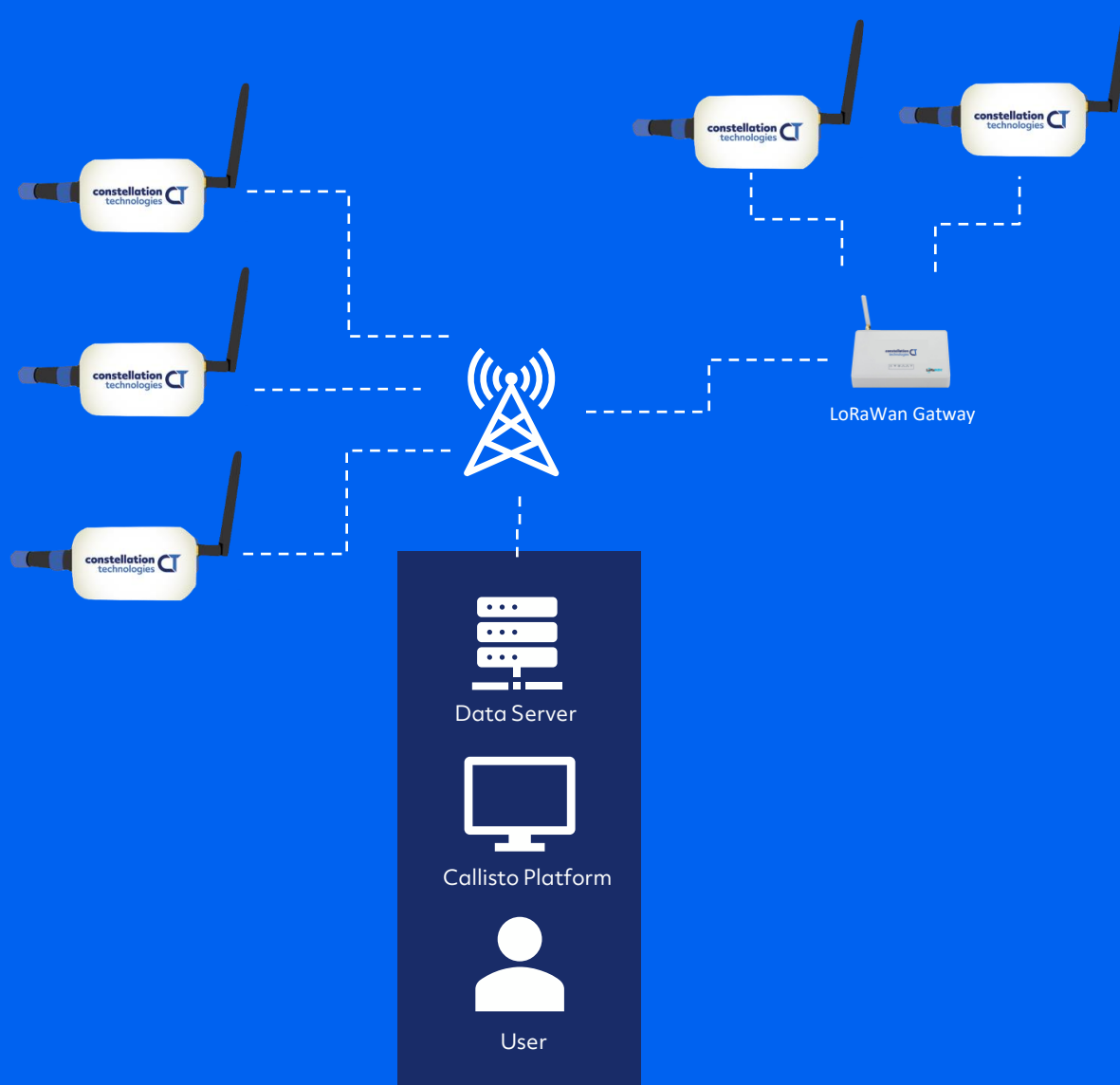
# Callisto Hardware Products

Simple installation with Drastic Improvements

# Callisto Cold Chain Devices & Gateway

## LPWan Devices

- Easy Installation
- Each Device has its own Sim Card
- 5000 mAh Lithium-ion rechargeable battery
- Alert notifications
- Sampling every 15 mins and reporting every 1 hr
- Remote calibration ability
- Add a variety of sensor probes, ie temp, humidity



## LoRaWan Devices

- Same features as LPWan Devices, but no Sim Card

## LoRaWan Gateway

- Gateway Supports Wi-Fi AP (2.4 GHz)
- TF card for log backup
- Built-in LED status indicator
- Works on Ethernet and Cellular network
- High Gain Antenna

# Carme Device

## Handheld Temperature Probe

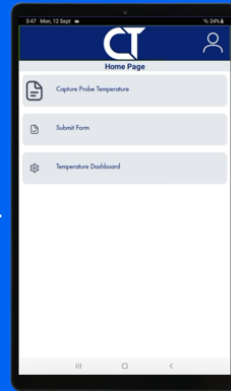
For personal use only

### Carme Device

- Temp Range: -35° to 250°C
- Ambient Operating Range: 0° to 50°C
- Resolution: 0.1° C
- OLED Color Display with 128 X 64 resolution
- K-Type Connector ability to replace probes.
- LoRaWan based transmission direct to cloud
- RF Range: 200 ft, line-of-site
- Auto-off: Adjustable
- Sleep Mode: Adjustable
- Power: Replaceable 2 AAA battery(Included)
- Battery Life: 1036 hours
- ABS plastic housing with antimicrobial additive
- IPX7 waterproof rated



LoraWan



Wi-Fi



### CT App

- LoRaWan device integration.
- Connects to CT Gateway Wi-Fi.
- Centralised administration.
- Easy to use.

# Cool Down Device

## Portable Cool-down

For personal use only

### Features of Cool Down Process

Real Time monitoring.

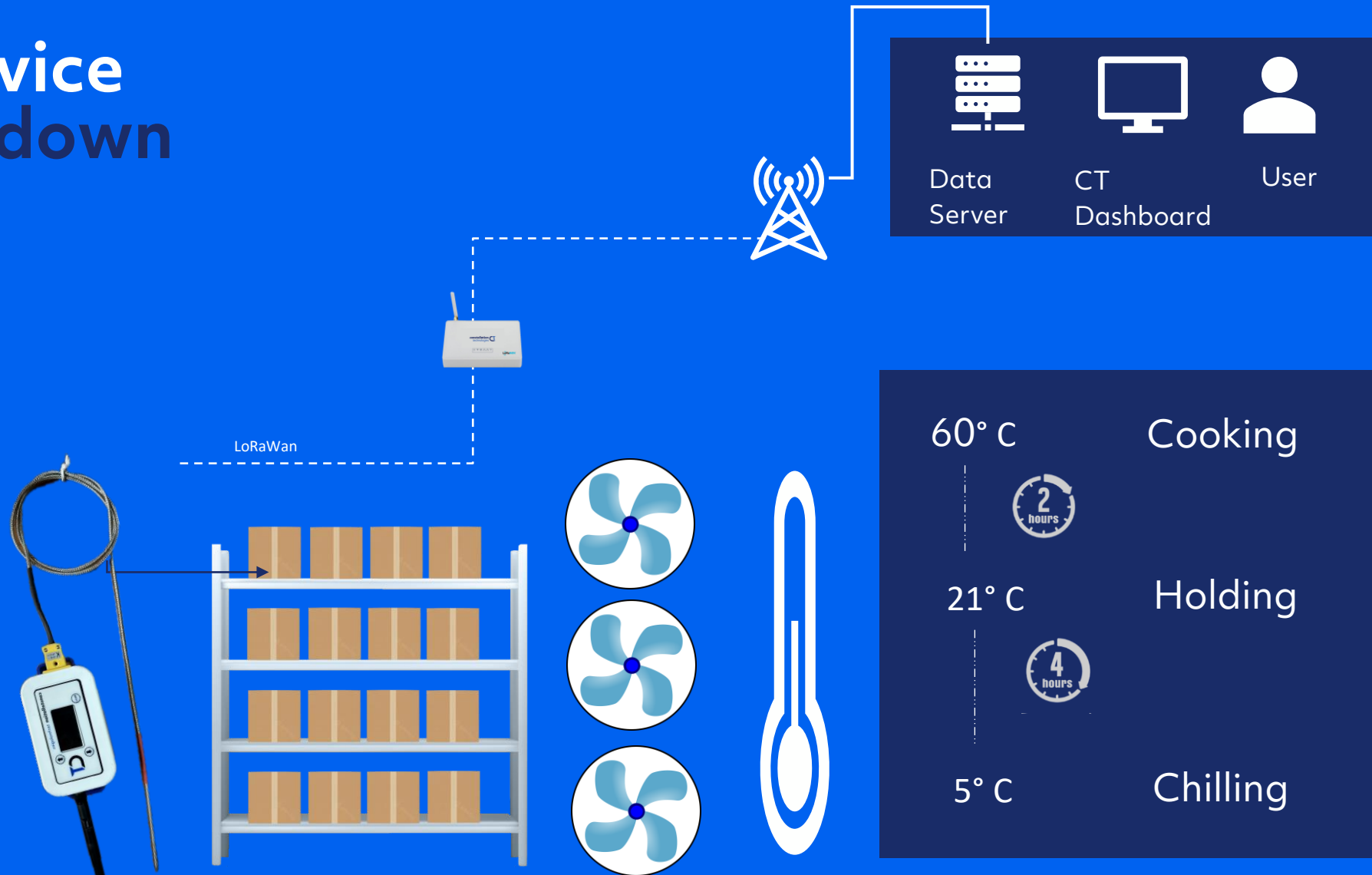
Operates on LoRaWAN.

High temperature tolerance Teflon probes.

Automatic process trigger at 60° Celsius.

Integrated temperature recording at 2hrs and 4hrs.

- Alert notification.
- Event name customization for each cool down cycle.



**Thankyou**

# Disclaimer

The information in this presentation does not constitute personal investment advice. The presentation is not intended to be comprehensive or provide all information required by investors to make an informed decision on any investment in Constellation Technologies Limited (Company). In preparing this presentation, the Company, did not take into account the investment objectives, financial situation and particular needs of any particular investor. Further advice should be obtained from a professional investment adviser before taking any action on any information dealt with in the presentation. Those acting upon any information without advice do so entirely at their own risk. This presentation does not constitute an offer or invitation to purchase securities in the Company. Recipients of this presentation who intend to consider investing are reminded no reliance may be placed for any purpose on the information, opinions, forecasts and/or estimates contained in this presentation or any other document or oral statement, or on the completeness, accuracy or fairness of that information or those opinions. Whilst this presentation is based on information from sources which are considered reliable, no representation or warranty, express or implied, is made or given by or on behalf of the Company and its related entities, any of its directors, or any other person about the accuracy, completeness or fairness of the information or opinions contained in this presentation and no responsibility or liability is accepted by any of them for that information or those opinions or for any errors, omissions, misstatements (negligent or otherwise) or for any communication written or otherwise, contained or referred to in this presentation. Accordingly, neither the Company and its related entities, nor any of its directors, officers, employees, advisers, associated persons or subsidiary undertakings are liable for any direct, indirect or consequential loss or damage suffered by any person as a result of relying upon any statement in, or as a result of any admission in, this presentation or any document supplied with this presentation, or by any future communications in connection with those documents and all of those liabilities, losses and damages are expressly disclaimed. Any opinions expressed reflect the Company's and its related entities position at the date of this presentation and are subject to change. No assurance is given by the Company that any capital raising or debt financing referred to in this presentation will proceed. All amounts are in Australian dollars unless otherwise stated.