

Personal use only



TECHGEN METALS
LIMITED

NEWGENGOLD CONFERENCE PRESENTATION

Lithium & Gold Exploration

November 2023 – ASX: TG1

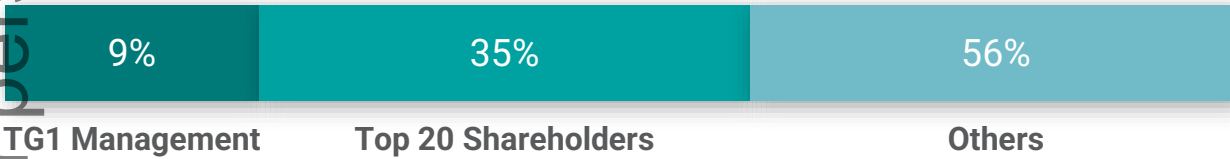


Corporate Structure

For personal use only



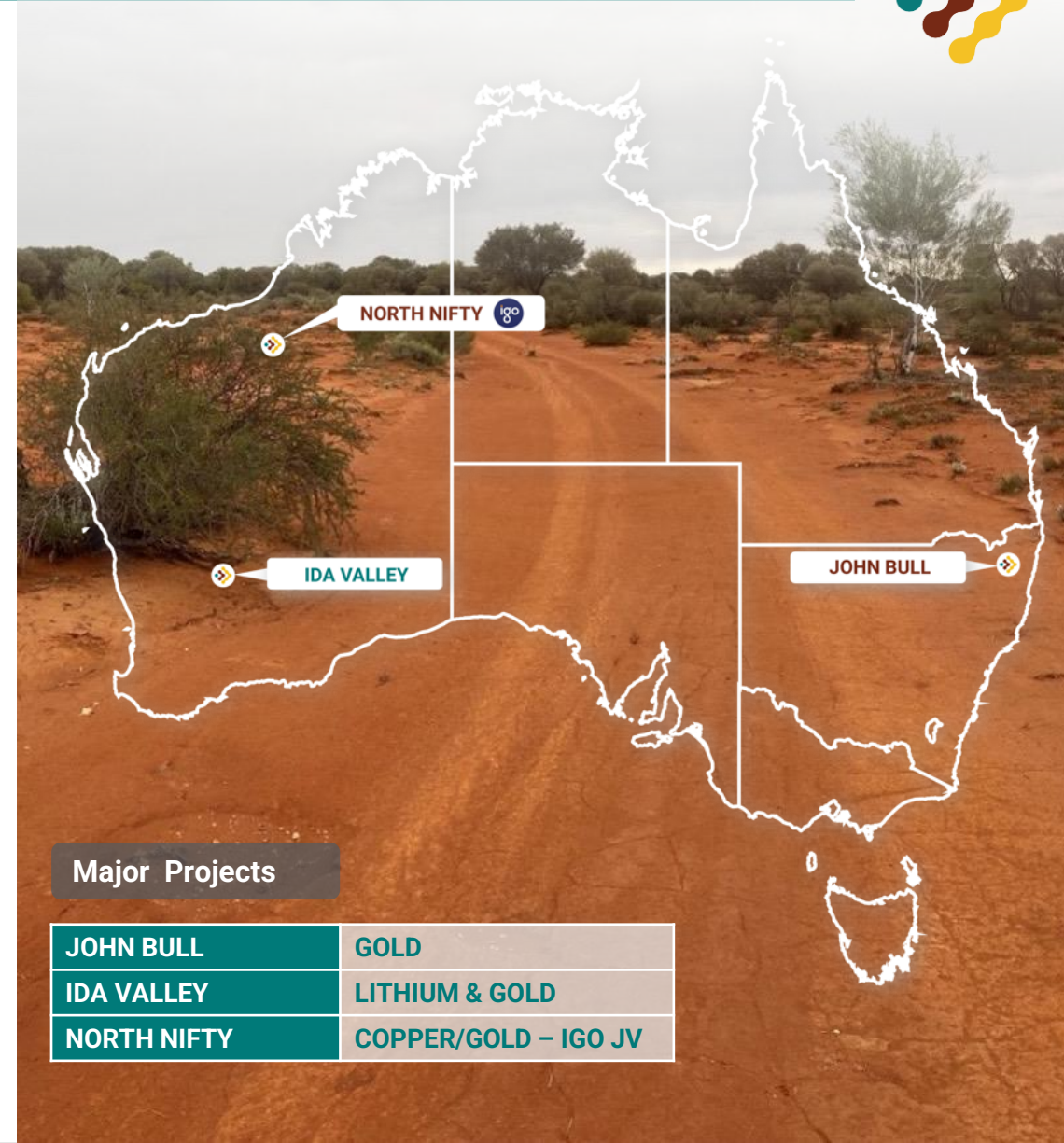
Shareholder Structure



Active Explorers Since Listing in April 2021

4 airborne EM surveys	1 airborne magnetics survey	✓ JV Rio Tinto Exploration (completed)
3 ground EM survey	7 soil sampling programs	✓ JV IGO Limited (current)
2 IP surveys	9 drilling programs	

We aim to continue this accelerated exploration program moving forward aggressively targeting economic discoveries to greatly add shareholder wealth.



Major Projects

JOHN BULL	GOLD
IDA VALLEY	LITHIUM & GOLD
NORTH NIFTY	COPPER/GOLD – IGO JV



Investment Highlights - Lithium & Gold

For personal use only



Ida Valley Lithium

100% owned WA project

Lithium – Caesium & Tantalum geochemistry in soils up to 144.5ppm Li (311ppm Li₂O)

3 Li target areas identified for immediate sampling and mapping

- Known lithium district:
 - Delta Lithium - south (14.6Mt @ 1.2% Li₂O)
 - Liontown - north (156Mt @ 1.35% Li₂O)
 - Rio Tinto neighbouring tenure, north and south of Ida Valley Lithium
 - IGO to the east



John Bull Gold

- Scale opportunity
- Orogenic & Intrusive Related Gold Systems
- JBRC001 68m @1.01 g/t Au, including 23m @ 2.02 g/t from surface
- 66m @ 1.14 g/t Au from 32m (hole JBRC006)
- Surface geochemical anomaly of +1.2km above 100ppb Au with a project peak soil value of 10g/t Au (10,000 ppb)
- Free hold land – no native title



ASX: TG1

- Low market cap
- 77M shares on issue
- Leveraged for success
- No debt
- Experienced management team
- Proven aggressive exploration
- Upcoming catalysts



Ida Valley – Lithium & Caesium

For personal use only

100% Owned

Ideal Location

The Ida Valley Project comprises two granted Exploration Licences - E29/1053 and E36/1015.

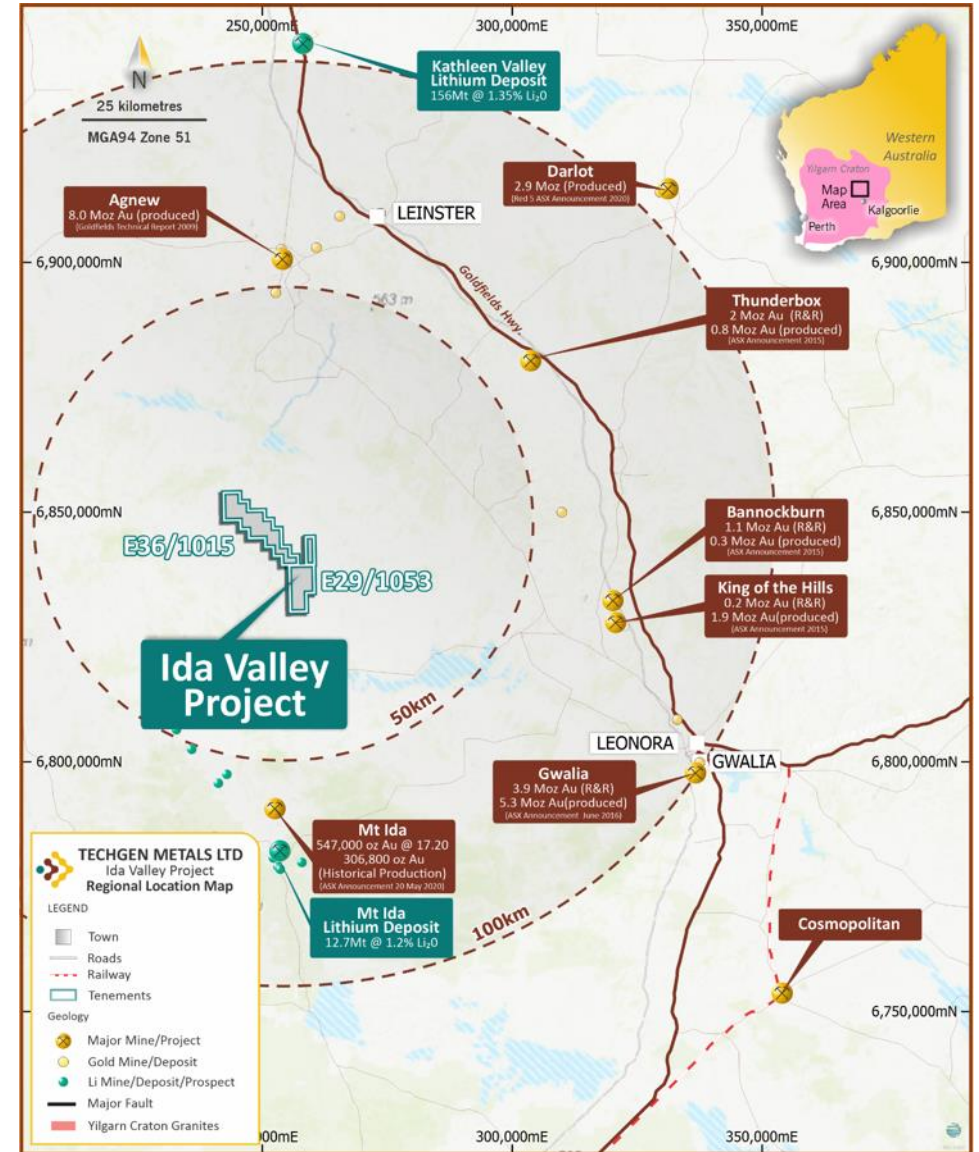
The Ida Valley Project lies within the northern sector of the Norseman-Wiluna Greenstone Belt in an area previously misunderstood due to a lack of regional mapping and poor access until now.

The Company looks forward to providing further updates from pegmatite mapping and sampling around the newly identified elevated lithium and pathfinder element areas.

Lithium & Caesium Mineralisation

Three areas identified to date are:

- **Northwest** (peak soil values of **144.5ppm Li** & **16.15ppm Cs** – [BBGA1707]) contains a **1.6km long +10ppm** lithium soil anomaly;
 - **Central** (peak soil value of **92.2ppm Li** – [BBGA032]) with limited lithium soil sampling north and south; and
 - **Southern** (peak soil values **102.5ppm Li** & **49.8ppm Cs** – [BBAG509]) **2.5km long +10ppm** lithium soil anomaly.
- The Southern anomaly has the highest recorded **rubidium** value at the project of **402ppm** and occurs on the last line of sampling in this area.
 - There is a data gap of 2.2km to the north where multi-element assays were not obtained previously given the programme’s focus on gold. None of these areas have been systematically mapped previously.





Ida Valley – Lithium & Caesium

Ida valley Pegmatites

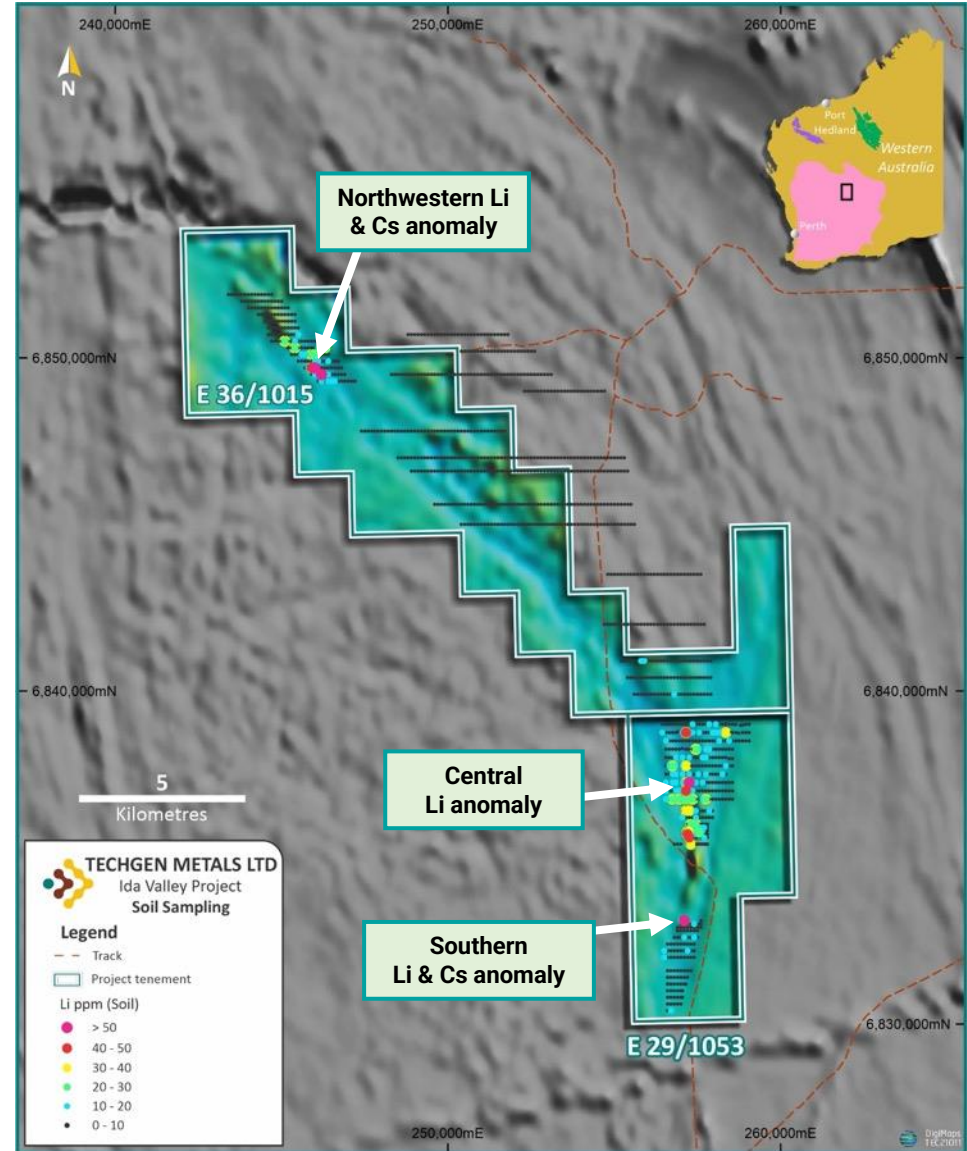


Photo 1 & 2: Examples of pegmatites at Ida Valley taken during Stage 1 gold RC drilling – June 2021.

Field logs recorded during soil sampling activities mention widespread outcrops of granite, mafic rocks, pegmatite, pegmatite within granite and pegmatite veining in mafic rocks. Field work due to commence shortly will visit areas of highest lithium, caesium and rubidium soil anomalism.

- The Company's Ida Valley gold RC drilling programs intersected pegmatites within amphibolite and ultramafic units with only stage 2 RC tested for multi-elements including lithium, with these selected assay results returning no anomalous lithium values from the drilled pegmatites. The Central (~350m) and Northwest (~18km) soil areas are located well away from any previous drilling activities.

(Refer to ASX announcements 17th June 2021 & 2nd September 2021)



Ida Valley historic soil sampling locations and priority anomalies.

For personal use only



New England Orogen – John Bull | Gold

Gold Discovery – September 2022

For personal use only

Location

The John Bull Gold Project is located east of Glen Innes in northern New South Wales within the New England Orogen. The project covers 32km².

Drilling

First hole, JBRC001, intersected **68m @ 1.0g/t Au** including **23m @ 2.02g/t Au** with a peak grade of **13.8g/t Au** (from surface).
 JBRC007 intersected **94m @ 0.95 g/t Au** from **4m** and included **66m @ 1.14 g/t Au** from **32m**.
 Stage 2 drilling returned **22m @ 1.07g/t**, **9m @ 1.82g/t** and **7m @ 1.07g/t Au** from hole JBRC016.
 All 17 drill holes completed at the project to date have returned assays >1 g/t Au.

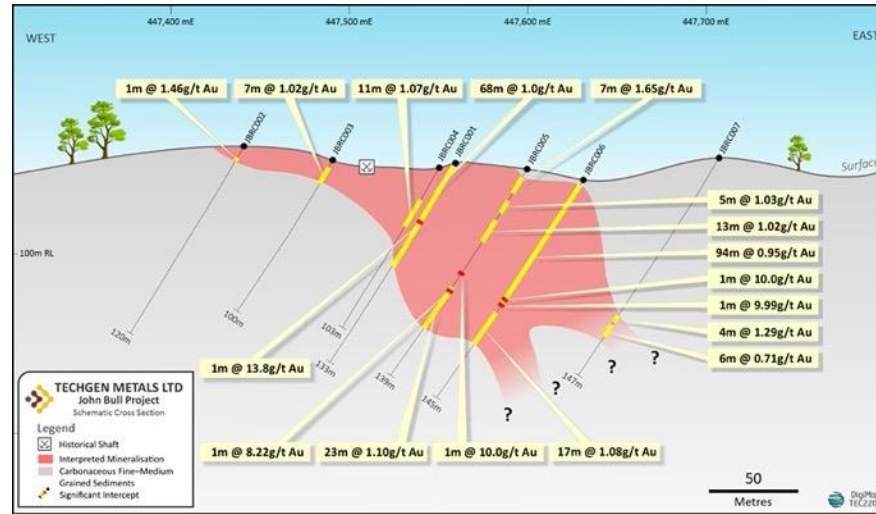
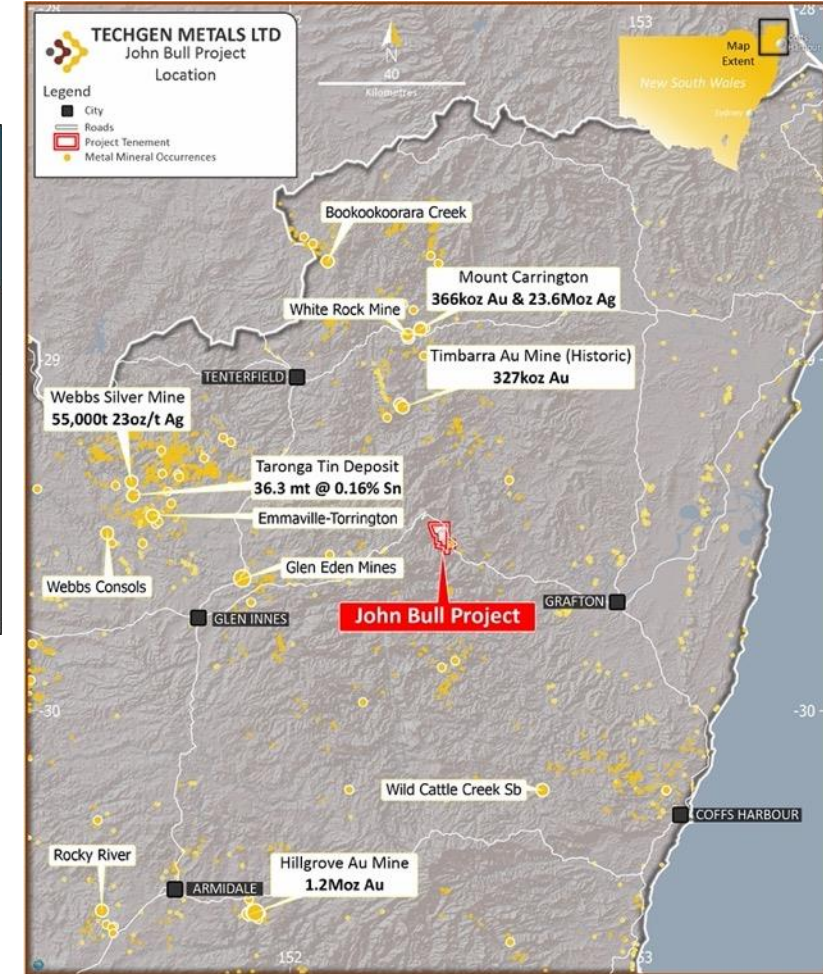


Figure: Discovery RC drill line completed at the John Bull Project in 2022.

Historic

- The John Bull Gold Shafts were mined in the mid 1880's (approximately 14 shafts have been located to date).
- Two main areas of surface gold sluicing worked in the 1940's (free gold within weather clays).
- Kennecott & Southern Goldfields completed a trench in the 1980's that returned: **160m @ 1.2g/t gold**, with impressive higher-grade intervals including **5m @ 18.0g/t gold** and **5m @ 7.1g/t gold**.
- Since gold was first discovered 137 years ago, no drilling had occurred until TechGen Metals (August 2022).





New England Orogen – John Bull | Gold

Width and high-grade gold potential

For personal use only

Soil Geochemistry

Peak soil sample results of **10 g/t gold** and **8.56 g/t gold**.
Forty-two soil samples to date have returned values **+ 1 g/t gold**.
 Two broad zones of + 0.1 g/t (100 ppb) soil gold anomalism have been identified.
 Zone 1 is 950m x 275m & Zone 2 is 250m x 150m and both open.

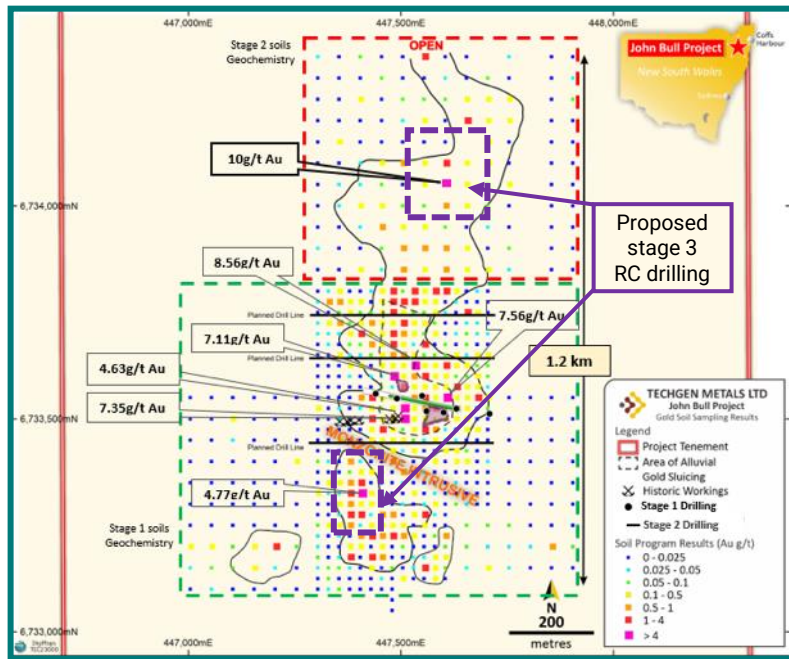


Figure: Gold soil geochemistry, best grades, stage one collar locations and current planned drilling.

Geology Highlights

- Petrology confirms intrusive rock types in project area (December 2022).
- **1.2 km strike of +0.1 g/t gold (100ppb) soil anomaly.**
- Gold mineralisation may represent an Intrusion Related Gold System (IRGS) style of mineralisation as well as the orogenic system identified to date.
- Large scale and tonnage potential with mineralisation commencing at surface.

Next Steps

- Phase 3 RC drilling targeting the northern peak soil anomaly of 10 g/t Au within a quartz veined orogenic system and the southern peak soil anomaly of 4.77 g/t Au within a monzonite intrusive unit.

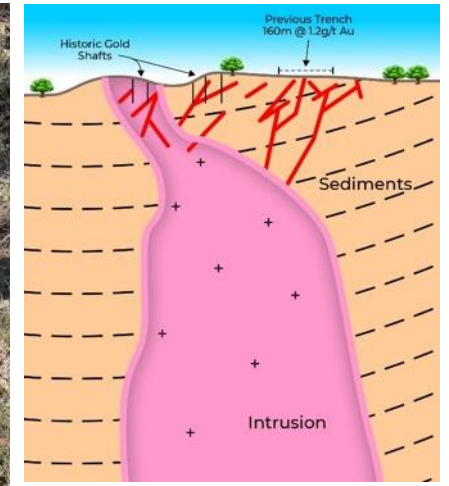
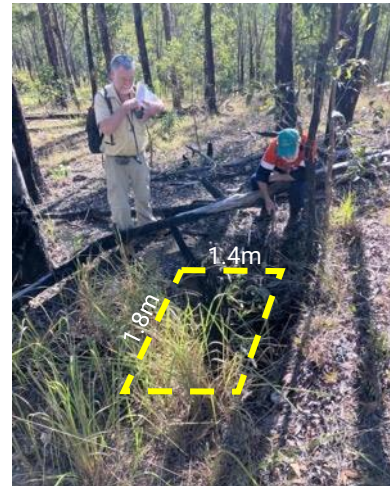


Photo 1 & 2: Geos inspecting historic shaft within Monzonite intrusive gold system (IRGS). Cartoon figure: IRGS model only



Activity Timeline

	Q4 2023			Q1 2024			Q2 2024		
Project	Oct	Nov	Dec	Jan	Feb	Mar	Apr	May	Jun
Ida Valley (Li)	Lithium Caesium Data review	Field sampling & Mapping	Assaying (PoW) Drilling application	Assaying Field sampling & Mapping	Drill Testing	Assaying	Stage 2 Drill Testing		
John Bull (Au)	Stage 3 permitting		Access – pre-drill planning		Drilling		Assays		
North Nifty IGO JV	Access agreements	Data review and modelling				Mapping	Mapping and Assays		



Board & Management

Technical Advisory Board

For personal use only



MAJA MCGUIRE
NON-EXECUTIVE CHAIR

- Consultant lawyer and corporate advisor with 15 years' experience in the provision of strategic, corporate and compliance advice to ASX listed companies. Holds LLB and BComm qualifications from the University of Western Australia.
- Experience includes working with listed companies as a non-executive chair, non-executive director, general counsel and company secretary (ASX:AVR, ASX:AJX) and in top-tier private practice (Clayton Utz).
- Currently also Non-Executive Director of Kuniko Limited (ASX:KNI), Indiana Resources Limited (ASX:IDA) and LTR Pharma Limited (ASX: LTP).



ANDREW JONES
EXECUTIVE DIRECTOR

- More than 20 years' experience as a geologist, having worked throughout Australia, Africa and South America.
- Holds a B.App.Sci degree from RMIT University and Honors and MSc degrees from the University of Tasmania.
- Specialises in gold, copper, nickel and cobalt. Member of both the Australian Institute of Geoscientists (AIG) and the Australasian Institute of Mining and Metallurgy (AusIMM).



ASHLEY HOOD
MANAGING DIRECTOR

- Exploration and corporate experience of more than 18 years in the mining and exploration industry with junior and major mining companies, listing several ASX exploration companies.
- Specialises in project and people management, native title negotiations, project due diligence, acquisitions.
- Has a portfolio of family held mineral and precious metals projects privately & in several ASX listed companies as flagship assets.



Aida Tabakovic
CO-SEC

- Appointed as the Company Secretary of the Company on 1 December 2022.
- Over 11 years' experience in the accounting and financial reporting of listed and unlisted companies. Holds a Double Major Degree in Accounting and Finance and a Postgraduate Degree in Business Law. Provides services to a number of ASX listed and unlisted companies, specialising in financial accounting and corporate compliance.
- Involved in listing a number of junior exploration companies on the ASX and is currently Company Secretary for numerous ASX listed companies.



CARL SWENSSON
GEOLOGIST

- Fellow of the AIMM, a member of Society of Economic Geologists and a Qualified Person under Canadian Instrument NI43-101
- Over 40 years of experience in mineral exploration and resource assessment.
- In-field experience in most commodities and deposit styles for gold, base metals, tin, tungsten, lithium, uranium, diamonds, coal and graphite across varied geological environments from Archean to Pliocene.
- Experience with both multinational and junior companies including as Chief Exploration Geologist for Normandy Mining Pty Ltd.
- Instrumental in starting several junior exploration companies in Australia and Canada and served on the Boards of a number of companies with extensive Australian and international experience having worked in Brazil, Chile, Peru, Canada, USA, Indonesia, Cambodia, Turkey, Greece and Tanzania.



PETER SPITALNY
GEOLOGIST

- Senior exploration experience spans 30 years' exploration experience, focused upon gold and expert in lithium pegmatites. Has significant experience with manganese, nickel, copper.
- Member of the AusIMM and has acted for several publicly listed companies as a Competent Person, as defined by the JORC Code (2012). Has held board positions in public companies.



RUSSELL MORTIMER
GEOPHYSICIST

- Experienced in the application of geophysical techniques in mineral exploration for gold, platinum group elements (PGE's) and a broad range of base metals including, iron ore, nickel, copper, manganese, graphite as well as mineral sands and uranium.
- Experienced in geophysical exploration for nickel/copper sulphides and other base metals and is directly responsible for a number of well renowned geophysical discoveries.



PETER PEEBLES
GEOLOGIST

- Senior geologist with over 36 years' experience, largely working in Australia, Africa, Europe, and China.
- Specialising in Gold, manganese/iron, base metals including nickel, copper lead and zinc, and industrial metals based in China.
- Multiple ASX board and exploration management positions.



TECHGEN METALS
LIMITED

Contact Details

ASHLEY HOOD

MANAGING DIRECTOR

E: ashley.hood@techgenmetals.com.au

P: 0427 268 999

ANDREW JONES

TECHNICAL DIRECTOR

E: andrew.jones@techgenmetals.com.au

P: 0439 994 004

ADDRESS:

683 Murray Street, West Perth WA 6005

PO Box 901, West Perth WA 6872

Telephone: +61 8 6557 6606

Email: admin@techgenmetals.com.au

W: techgenmetals.com.au



For personal use only



Disclaimer

The information contained in this presentation has been prepared by TechGen Metals Ltd (ACN 624 721 035) (Company).

This presentation is not an offer, invitation, solicitation or other recommendation with respect to the subscription for, purchase or sale of any securities in the Company. This presentation has been made available for information purposes only and does not constitute a prospectus, short form prospectus, profile statement or offer information statement nor does it constitute investment or financial product advice (nor taxation, accounting or legal advice) and it is not intended to be used as the basis for making an investment decision.

This presentation does not include all available information and should not be used in isolation as a basis to invest in the Company. This presentation is not subject to the disclosure requirements affecting disclosure documents under Chapter 6D of the Corporations Act 2001 (Cth). The information in this presentation may not be complete and may be changed, modified or amended at any time by the Company, and is not intended to, and does not, constitute representations and warranties of the Company.

The Company does not have a significant operating history on which to base an evaluation of its business and prospects. Therefore, the information contained in this presentation is inherently speculative.

The information contained in this presentation is strictly confidential and you must not disclose it to any other person. While the information contained in this presentation has been prepared in good faith, neither the Company or any of its directors, officers, agents, employees or advisors give any representation or warranty, express or implied, as to the fairness, accuracy, completeness or correctness of the information, opinions and conclusions contained in this presentation. Accordingly, to the maximum extent permitted by law, none of the Company, its directors, employees or agents, advisors, nor any other person accepts any liability whether direct or indirect, express or limited, contractual, tortious, statutory or otherwise, in respect of, the accuracy or completeness of the information or for any of the opinions contained in this presentation or for any errors, omissions or misstatements or for any loss, howsoever arising, from the use of this presentation.

This presentation may contain statements that may be deemed “forward looking statements”. Risks, uncertainties and other factors, many of which are outside the control of the Company can cause actual results to differ materially from such statements. Such risks and uncertainties include, but are not limited to, exploration risks, tenure and access risks and commodity price volatility and exchange rate risks, as well as political and operational risks, and governmental regulation and judicial outcomes.

The Company makes no undertaking to update or revise such statements but has made every endeavour to ensure that they are fair and reasonable at the time of making the presentation.

Investors are cautioned that any forward-looking statements are not guarantees of future performance and that actual results or developments may differ materially from those projected in any forward-looking statements made.

Authorisation - For the purpose of Listing Rule 15.5, this announcement has been authorised for release by the Board of Directors of TechGen Metals Limited.

Competent Person Statement - The information in this announcement that relates to Exploration Results is based on and fairly represents information compiled and reviewed by Andrew Jones, a Competent Person who is a member of the Australasian Institute of Mining and Metallurgy (AusIMM). Andrew Jones is employed as a Director of TechGen Metals Limited. Andrew Jones has sufficient experience that is relevant to the style of mineralisation and type of deposits under consideration and to the activity being undertaken to qualify as a Competent Person as defined in the 2012 edition of the Australasian Code of Reporting of Exploration Results, Mineral Resources and Ore Reserves. Andrew Jones consents to the inclusion in this announcement of the matters based on his work in the form and context in which it appears.

For personal use only