

**GREAT WESTERN EXPLORATION LIMITED  
AND CONTROLLED ENTITIES**

**ABN 53 123 631 470**

**ANNUAL REPORT**

**30 JUNE 2023**



# GREAT WESTERN EXPLORATION LIMITED

ABN 53 123 631 470

## CORPORATE DIRECTORY

### Directors

Kevin Clarence Somes (Chairman)  
Shane Pike (Managing Director)  
Grey Egerton-Warburton (Director)  
Ross Williams (Director)

### Company Secretary

Anthony Walsh

### Principal Office

Level 2, 160 ST Georges Terrace  
Perth, Western Australia 6005  
Telephone (08) 6311 2852

### Share Registry

Computershare Investor Services Pty Limited  
Level 17  
221 St Georges Terrace  
Perth  
Western Australia 6000

Telephone: 1300 787 272  
Facsimile: (08) 9323 2033

### Website:

[www.greatwesternexploration.com.au](http://www.greatwesternexploration.com.au)

### Auditor

Hall Chadwick WA Audit Pty Ltd  
283 Rokeby Road  
Subiaco WA 6008

### Solicitors

Steinepreis Paganin  
16 Milligan Street  
Perth  
Western Australia 6000

### Stock Exchange

The Company's shares are listed by the  
Australian Securities Exchange Limited

The home exchange is Perth

ASX Code - Fully paid shares    GTE

CONTENTS

<b>Review of Operating and Corporate Activities</b>	<b>1</b>
<b>Sustainability</b>	<b>21</b>
<b>Directors' Report</b>	<b>22</b>
<b>Consolidated Statement of Profit or Loss and other Comprehensive Income</b>	<b>34</b>
<b>Consolidated Statement of Financial Position</b>	<b>35</b>
<b>Consolidated Statement of Changes in Equity</b>	<b>36</b>
<b>Consolidated Statement of Cash Flows</b>	<b>37</b>
<b>Notes to the Consolidated Financial Statements</b>	<b>38</b>
<b>Directors' Declaration</b>	<b>70</b>
<b>Auditor's Independence Declaration</b>	<b>71</b>
<b>Independent Auditor's Report</b>	<b>72</b>
<b>Additional Information</b>	<b>77</b>

## Review of Operating and Corporate Activities

### Executive Summary

Great Western Exploration Limited (ASX: GTE) ("the Company", "Great Western") is pleased to provide a review of its operating and corporate activities for the year ended 30 June 2023.

- At the Firebird Gold Project a broad-spaced aircore drilling was completed, testing the large 3.7km x 450m wide untested soil anomaly at this location. Anomalous results were returned from the programme, with follow-up RC drilling completed subsequent to the end of June 2023.
- A heliborne EM survey was completed at the Fairbairn Nickel-Copper Project, exploring for Nova and Julimar style magmatic nickel-copper deposits along the margin of the Yilgarn Craton. Seven targets were identified warranting further investigation.
- Within the Atley North Project a RC drilling was completed at the Angus Target, testing a large 950m x 450m Ultrafine+ soil anomaly. Angus is located along the Youanmi Fault, with bedrock obscured by colluvium cover potentially obscuring mineralised units below.
- A passive seismic survey was completed at the Company's Lake Way Potash Project, defining a major paleochannel extending from S04's project to the north and traversing 60km through the length of Great Western's Tenure to the south. The paleochannel measured 2.5km in width with the deepest calibrated depth section of 162 metres.
- At the Yerrida North Joint Venture an airborne gravity gradiometry survey was completed refining the Yerrida Basin Model A comprehensive data collation was completed by Sandfire Resources that identified a number of new targets, with this data and identified targets reverting to Great Western after Sandfire's withdrawal from the project.
- Basement modelling was completed at the Golden Corridor Project, with EIS Initiative co-funding granted by the Western Australian Government to test depth to basement. This drilling will target mineralised Wiluna Greenstone interpreted to be shallower than previously interpreted, evident by gold in soil anomalism along north-east trending structural breaks.
- Within the Yandal Project a second phase of RC drilling was completed at Harris Find. All drilled holes intersected the targeted mineralised structure; with predominately narrow low-grade results received from these intervals.
- \$2.85mil fund raised by way of a placement in April and May 2023.

Great Western looks forward to continuing to update shareholders in the coming financial year, in what is expected to be a period of high intensity exploration activity.

## Operating Activities

### Firebird Gold Project

GTE 100% (E53/1894, E53/2027) and GTE Earning up to 80% (E53/2129)

The Firebird Gold Project ("Firebird") is located within the Youanmi Greenstone Belt, comprised of 100% owned GTE tenure and the adjacent Great Western-Dynamic Metals (ASX:DYM) Joint Venture (Great Western earning 80%). Firebird is 2.5km west of Western Gold Resources' Gold Duke Project which contains several Mineral Resources reported to JORC 2012 standard (Figure 1), demonstrating the fertility and economic potential of the greenstone sequence.



Figure 1: Location of the Firebird Project, with the location of the Gold Juke JORC 2012 standard resources located west of the Firebird Project.

Great Western completed Phase 1 aircore drill programme during the June 2023 Quarter, with 3,040m drilling completed to test the large 3.7km x 400m soil anomalism at Firebird (shown in Figure 2). Results returned from this drilling programme subsequent to the end of June 2023 confirmed the soil anomalism as insitu. The mineralisation was hosted by heavily weathered Archean Greenstones, rock units that host most of Western Australian's gold deposits. Assays of note included (shown in Figure 2-Figure 6):

- 2m @ 1.20g/t Au from 42m (GFB045);
- 2m @ 0.88g/t Au from 2m (GFB047);
- 2m @ 0.88g/t Au from 48m (GFB031);
- 2m @ 0.34g/t Au from 58m (GFB061);
- 4m @ 0.22g/t Au from 48m (GFB061);
- 4m @ 0.21g/t Au from 42m (GFB027); and
- 4m @ 0.20g/t Au from 24m (GFB027).

RC follow-up drill testing of the anomalous aircore drilling results was completed late July 2023, with assays from this programme expected in the September 2023 Quarter.

For personal use only

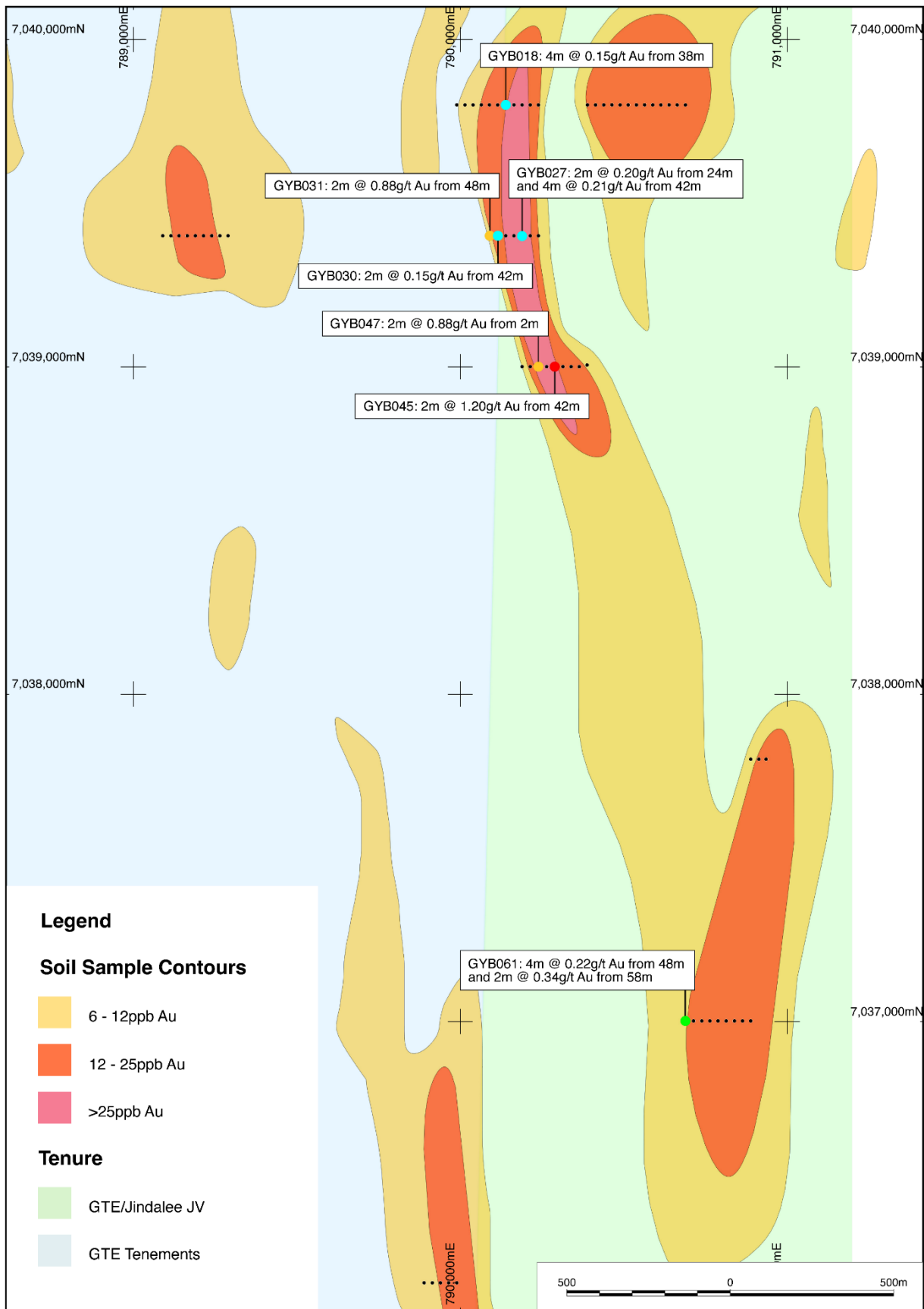


Figure 2: Plan section of soil anomalism, drilled aircore holes and associated anomalous assay results.

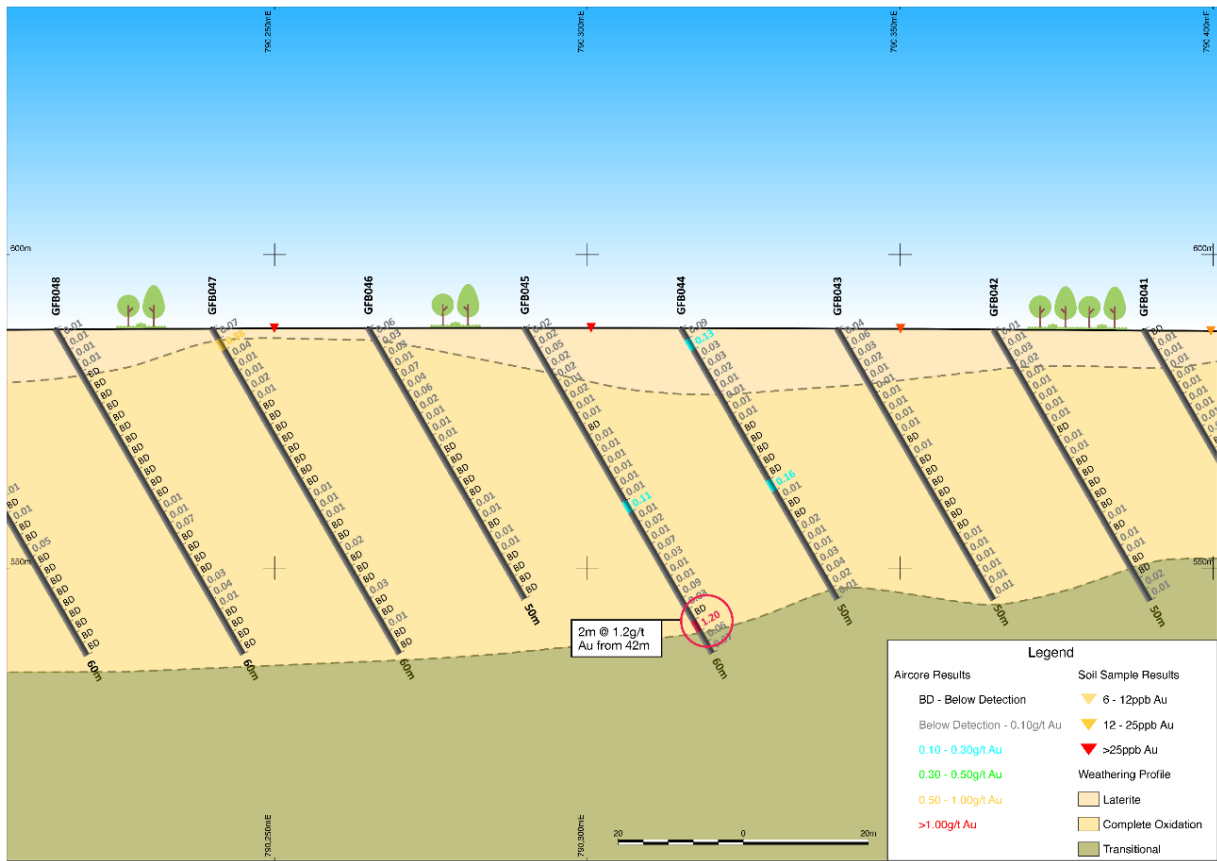


Figure 3: Cross section on 7,039,000N displaying anomalous result from drill-hole GFB045.

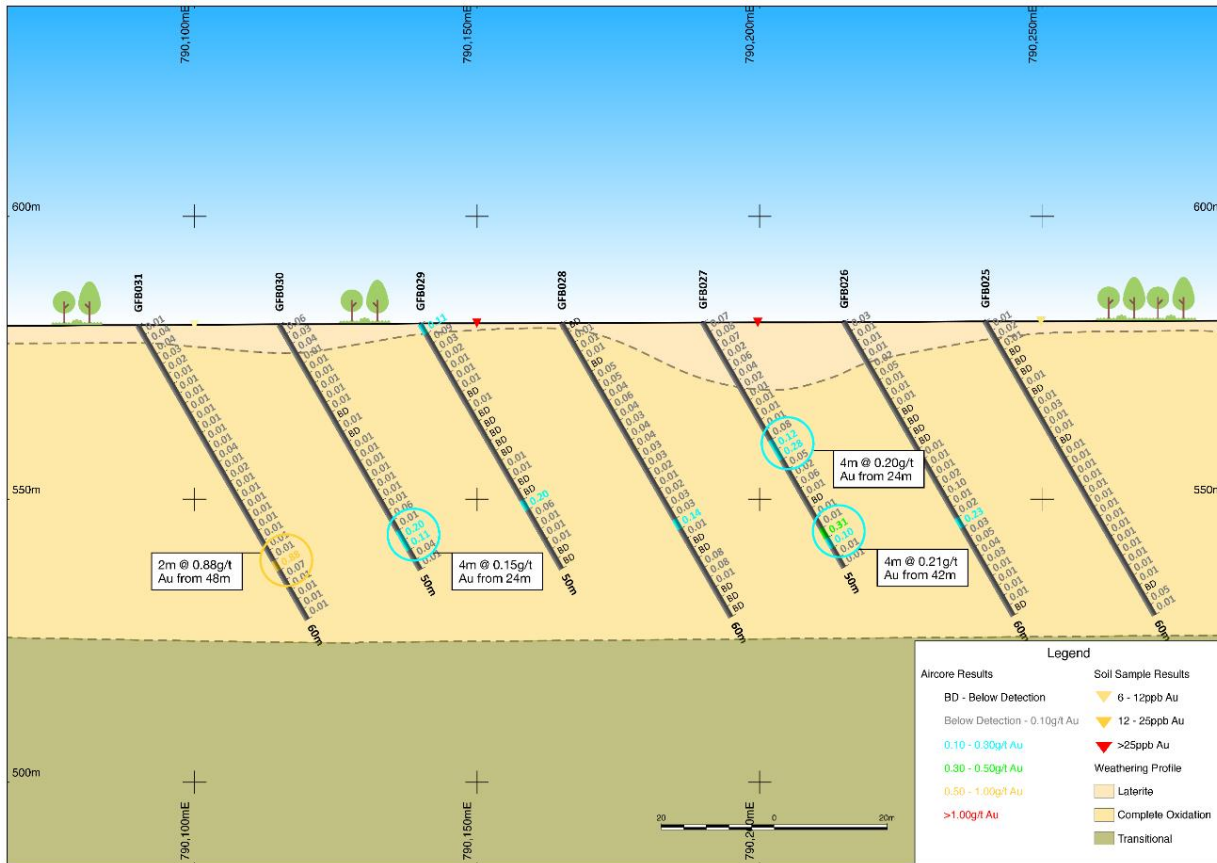


Figure 4: Cross section on 7,039,400N displaying anomalous aircore drill results of GFB027, GFB030, and GFB031.

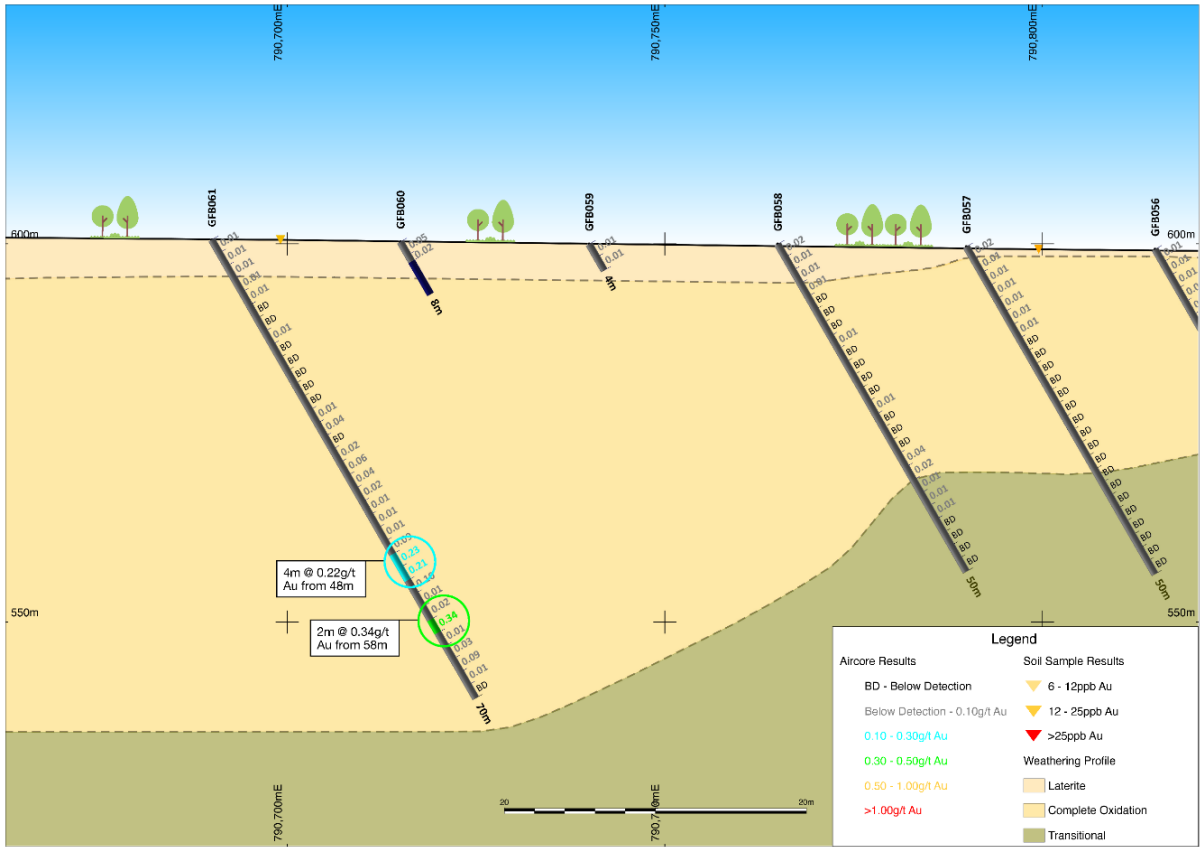


Figure 5: Cross section on 7,037,000N with anomalous assay result from drill-hole GFB061. Aircore holes GFB059 and 060 were abandoned due to hard ground.

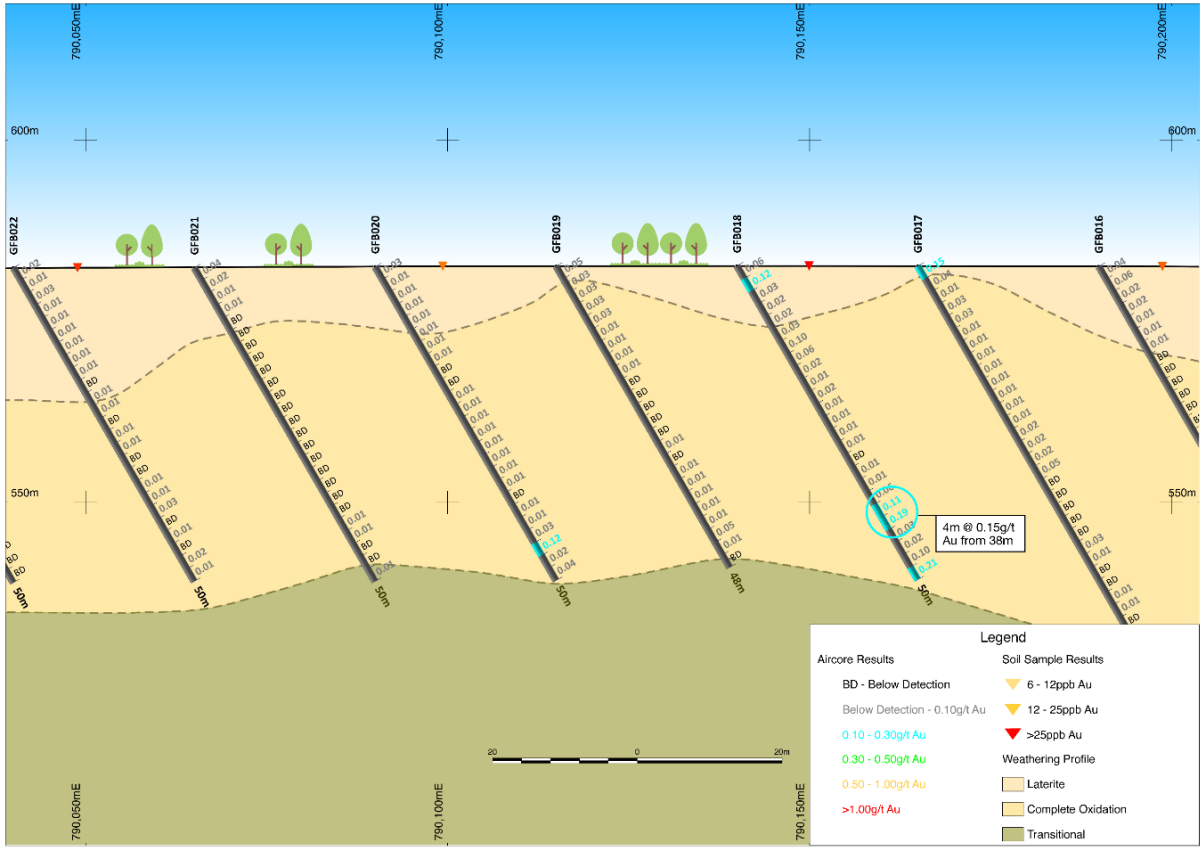


Figure 6: Cross Section of 7,039,800N and anomalous results from aircore drill-hole GFB018.



## Fairbairn Nickel-Copper Project

GTE 100% (E69/3443)

The Fairbairn Nickel-Copper Project is located 900km north-east of Perth, on the northern margin of the Yilgarn Craton, within the Earaheedy Basin. The Yilgarn Craton margin is highly prospective for base metal deposits, and host to both the Julimar and Nova Deposits (Figure 7). Little previous exploration has been completed at Fairbairn, with work completed during the 1980s and early-1990s focused on diamond exploration rather than magmatic nickel-copper style mineralisation.

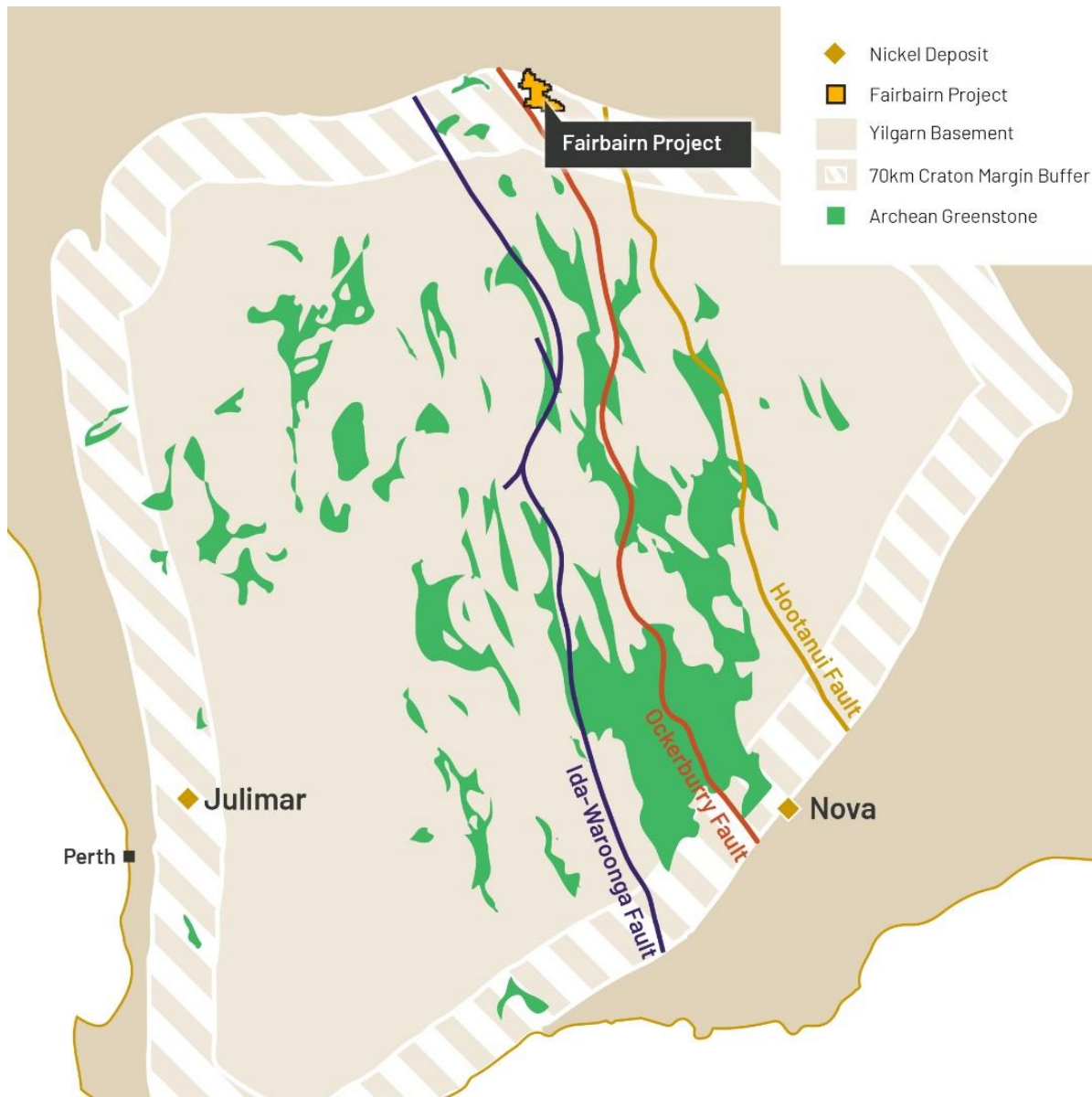


Figure 7: Location of the Fairbairn Base Metal Project on the margin of the Yilgarn Craton, and the interpreted “mantle tapping” Ockerbury Fault, a potential conduit for metal deposit formation.

A helicopter-borne electromagnetic (EM) survey was completed in January 2023 at the Fairbairn Nickel-Copper Project with the aim of delineating magmatic nickel-copper targets. Interpretation of this data identified seven modelled EM plate targets with significant lateral extents, measuring up to 900m along the plate’s length (Figure 8). The plates sit below the government mapped and modelled sedimentary rocks of Earaheedy Basin, with basement interpreted to be mafic and ultramafic rocks of Archean Greenstone

## Great Western Exploration Limited

Terrain, prospective for magmatic nickel-copper deposits.

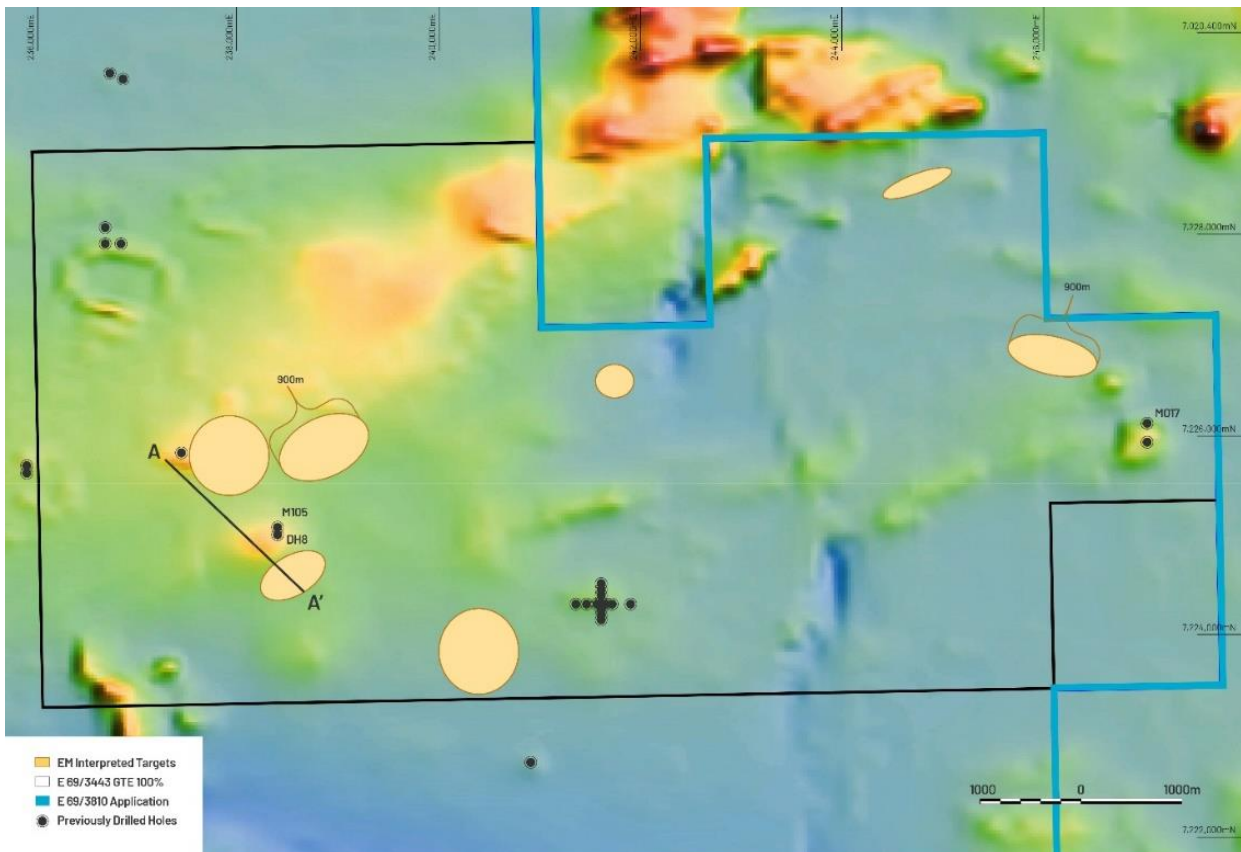


Figure 8: Location of interpreted plates from the helicopter-borne EM Survey in yellow, overlaid on reduced to pole magnetic data. Note location of previously drilled holes M017, M105, and DH8, in relation to the newly defined targets.

The magnetic highs shown in Figure 8 supports a greenstone basement interpretation, and legacy drilling completed in the 1990s intersected mafic and ultramafic rocks below basin cover. This drilling returned previously reported anomalous results of 20m @ 1,214ppm Ni from 28m (M017), from the limited suite of elements assayed at the time.

Review of government open file data found 1990s drilled holes M105 and DH8 (Figure 9) intersected ultramafic rocks with quartz-calcite veins and copper-sulphide mineralisation (described as chalcopyrite - DH8), adjacent to two modelled EM plates; no assays are available for this interval. These drilled intercepts potentially represent distal mineralisation from a mineralised source.

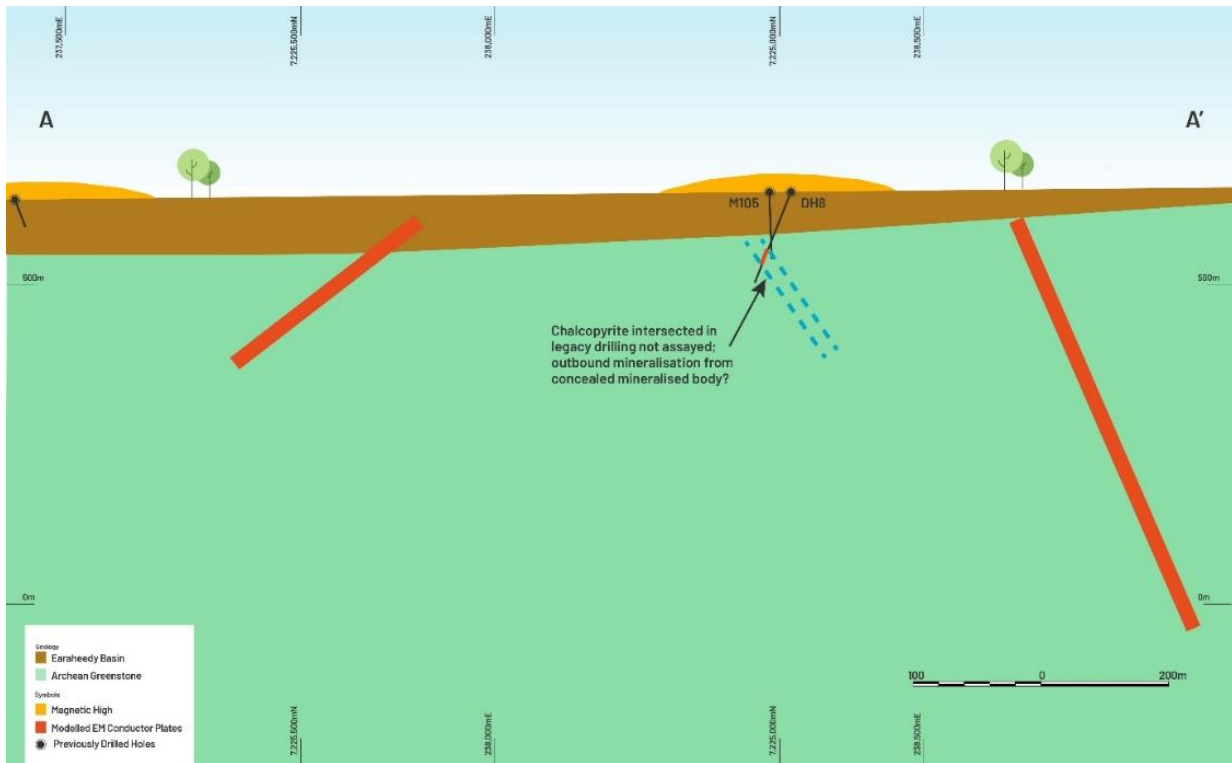


Figure 9: Cross Section (A-A', refer Figure 2) showing modelled EM plates and 1990s legacy drilling where copper-sulphide mineralisation was described.

Great Western prioritised further exploration on this project, with a field inspection completed during the June 2023 Quarter. Subsequent to the end of June 2023, a ground electromagnetic (EM) survey was undertaken to further define the seven previously identified heliborne EM targets. Interpretation of the ground EM data is underway, which the Company anticipates will further refine the seven heliborne EM targets.

## Atley North Project

GTE 100% (E57/1130)

The Atley North Project is located along the Youanmi Shear, host to nearby gold deposits such as Youanmi (Rox Resources) and Penny West (Ramelius Resources), shown in Figure 10. The Angus Target within this project is a large Ultrafine+ soil anomaly, with extents of 950m x 450m (Figure 11). Government bedrock mapping interprets Archean granitoids at this location; however, bedrock is obscured by transported cover, which potentially conceals Archean Greenstone units that are prospective for large orogenic gold deposits.

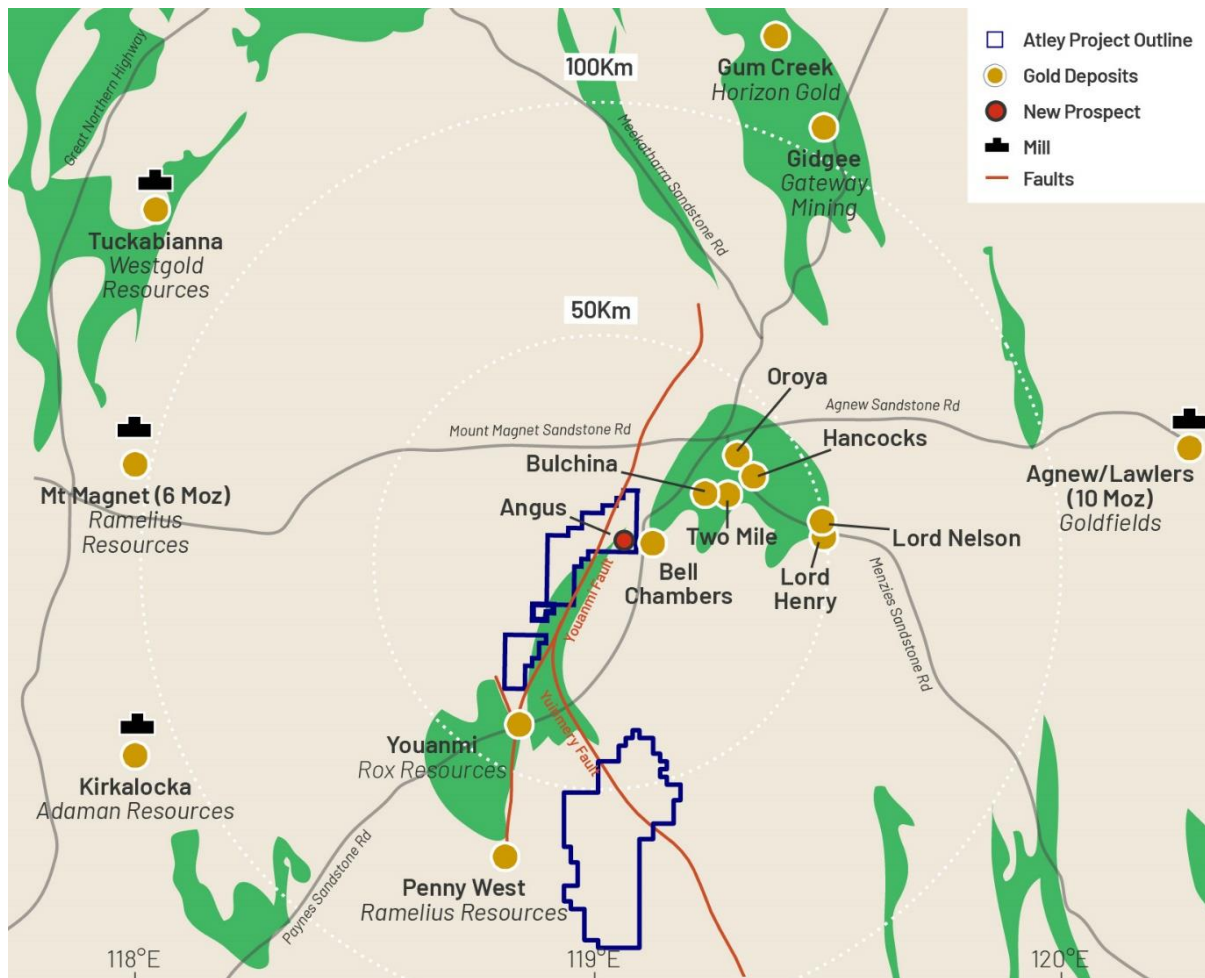
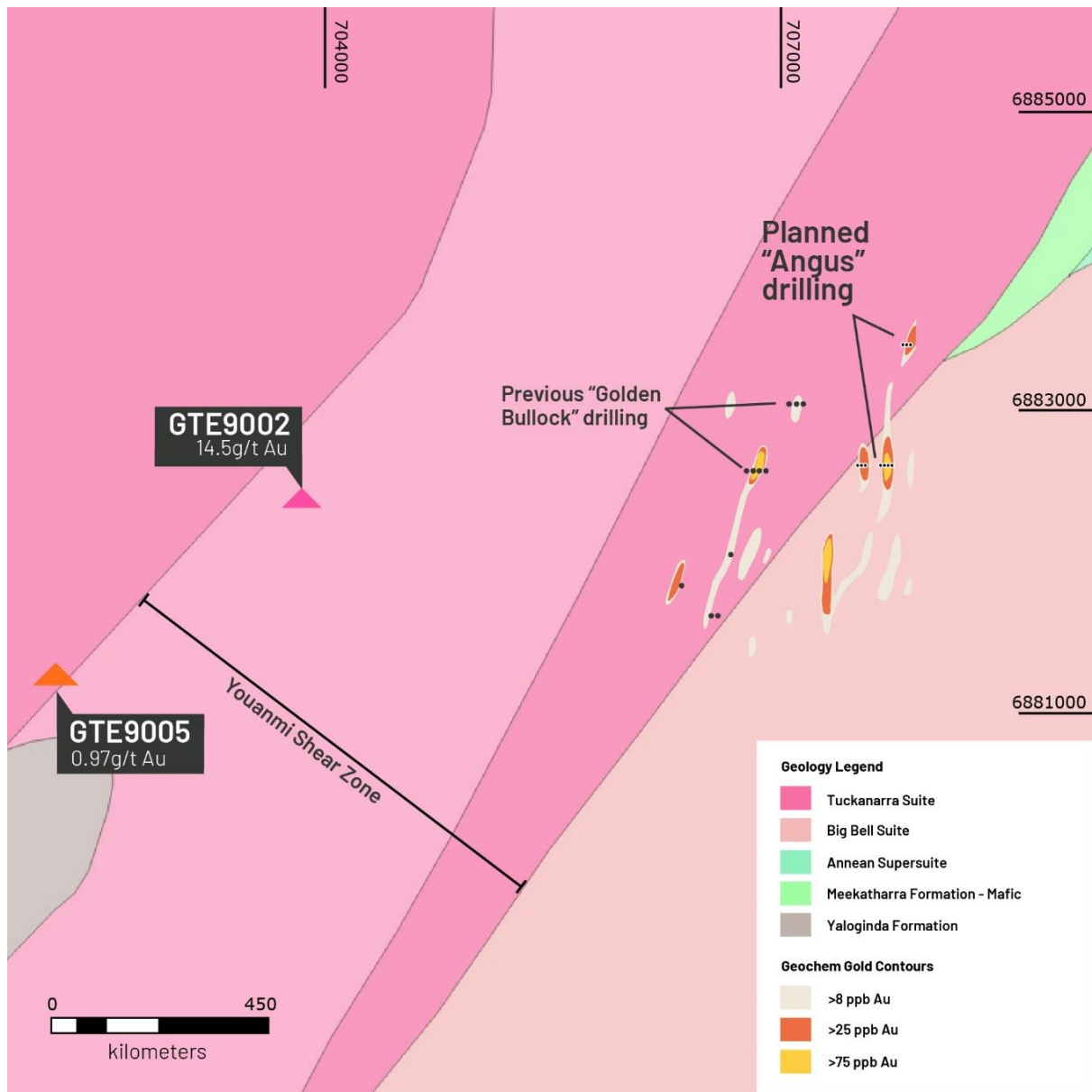


Figure 10: Location of the Atley North Project in proximity to nearby gold mines.

A reverse circulation (RC) drilling programme was completed subsequent to the end of June 2023, which tested the large 950m x 450m Ultrafine+ soil anomalism at the Angus Target, shown in Figure 11. The anomalous contours of the soil anomalism are sub-parallel with faulting of the Youanmi Shear Zone, with drilling designed to test the anomalies below shallow colluvial cover. Results from this programme are expected to be returned in the September 2023 Quarter.





## Lake Way Potash Project

GTE 100% (E53/1949, E53/2017, E53/2026, E53/2146, E53/2206)

Great Western's Lake Way Potash Project is located approximately 50km south-east from Wiluna and adjoins SO4's potash development project. The majority of SO4's potash resources are hosted within a single paleochannel which continues downstream into Great Western's tenure (Figure 12). Previously completed test work indicates that the potash brine within the basal sands of the paleochannel remains high grade (>5,000mg/l potash) as it enters Great Western's Lake Way Potash Project area (ASX Announcements by SO4 on 28th March 2018 and Great Western on 6th February 2020 and 1 July 2021).

Company data was reviewed by hydrogeologist KH Morgan of KH Morgan and Associates. In Mr Morgan's preliminary assessment of Great Western's Lake Way Project (GTE ASX Announcement 1 July 2021), he advised Great Western that: "A comprehensive test pumping programme by WMC defined the hydraulic properties of the aquifer providing useful data for any evaluation of brine abstraction from the Great

Western land. The WMC report also provides a range of potassium values. The higher potassium values occur in both shallow and deep aquifers.” (GTE ASX Announcement 1 July 2021).

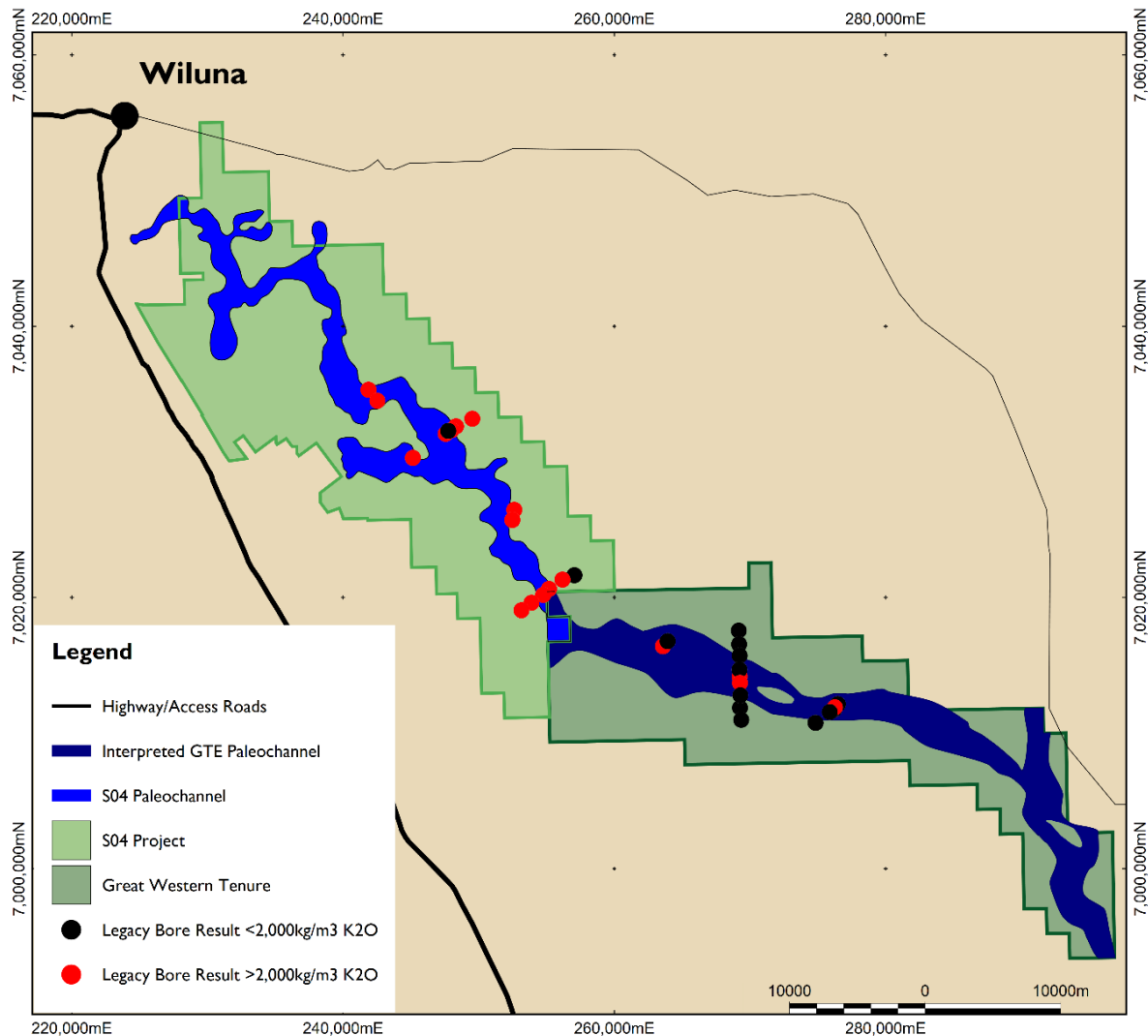


Figure 12: Interpreted continuation of SO4's Lake Way high grade potash paleochannel leading downstream into GTE's Lake Way Potash Project.

A passive seismic survey, a non-ground disturbing, low impact geophysical survey technique, was recently completed over the interpreted position of the paleochannel. Modelling of the horizontal to vertical (HVSr) survey data by Resource Potentials confirmed the paleochannel extends approximately 60km through the Company's held tenure, with central widths of up to 2.5km, and the deepest calibrated depth section being 162 metres near the western side of the tenure (illustrated in Figure 13 and Figure 14).

In KH Morgan's assessment of the recently acquired survey data, he described the paleochannel as forming initially from a centralised inset valley, which would have filled with lateritic and boulder colluvium from the valley slopes. He interprets "Many of these sediments have high hydraulic conductive properties providing ideal targets for high yield brine production bores" (GTE ASX Announcement 22 May 2023). The inset channel is overlain by a thinner sequence of potential brine yielding sediment, in places more than 10 kilometres in width."

Mr Morgan advised "The principal conclusion from combined passive seismic surveys is the potential presence of a major brine saturated palaeochannel system extending the full sixty-kilometre length through the Great Western tenements, clearly requiring ongoing evaluation for SOP resources".

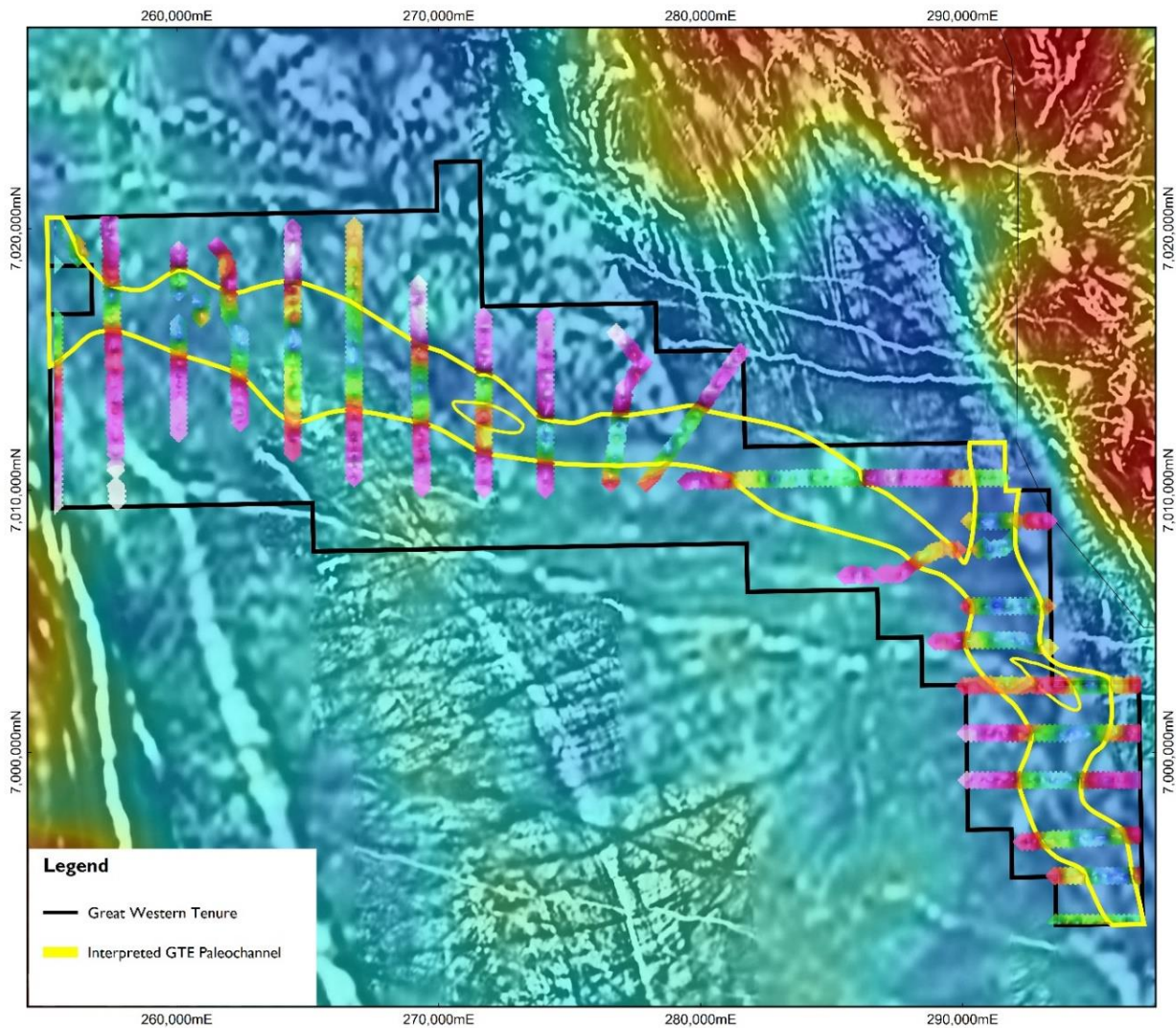


Figure 13: Coloured passive seismic sections overlain on state-wide pseudo-colour gravity and greyscale aeromagnetic imagery.

Great Western believes that the magnitude of the paleochannel presents an opportunity for the Company to unlock significant shareholder value. The services of Mr Morgan have been retained on a Consultancy basis to continue working with the Company to advance the Project to report a brine resource to equivalent standards as the JORC Code 2012 Code, which would potentially allow progress to a prefeasibility study.

The Company was also pleased to report that the 26D Water Licences held over the Company's Lake Way Tenements were renewed for a further two years to May 2025. These water licences allow up to 50 exploration bores to be drilled and to undertake sampling and test pumping of bore capability.

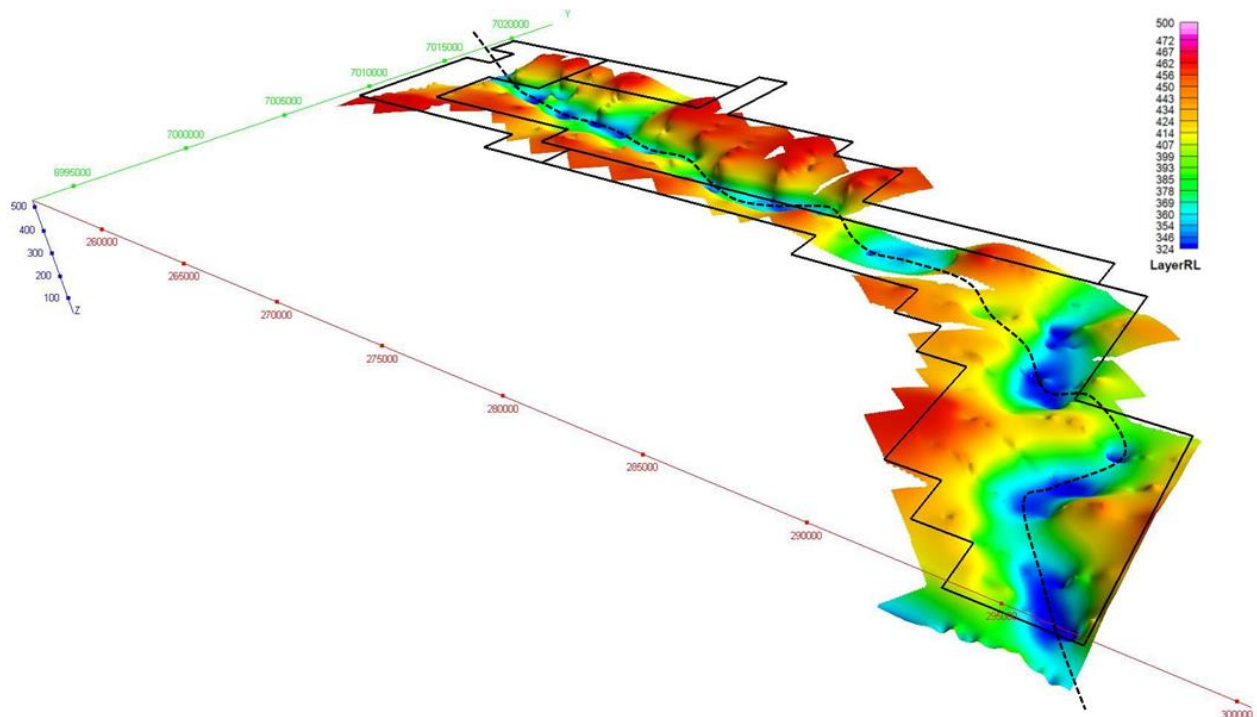


Figure 14: Three-dimensional view of the interpreted paleochannel pathway (thalweg) (after Resource Potential, March 2023).

## Yerrida North Joint Venture

An airborne gravity gradiometry (AGG) survey comprising 2,177 line-kilometres was completed across the majority of the Yerrida North Joint Venture Project, to further define Yerrida basin modelling and for target generation and exploration programme prioritisation. Interpretation of the AGG data was completed by Peter Kovac, an industry expert in AGG interpretation. The survey and subsequent basin structural interpretation was wholly funded by Sandfire Resources (ASX:SFR, "Sandfire") and combined AGG, magnetic and airborne electromagnetic data. The interpretation described two structural domains within the basin: (1) western compressional, and (2) eastern extensional/transensional domains.

In addition, Sandfire completed an extensive data collation and interpretation of previously completed exploration across the Yerrida North Joint Venture. The collated and interpreted data was integrated with the basin model described above, with field reconnaissance completed on areas of interest.

Subsequent to the end of June 2023, Great Western Exploration was advised by Sandfire that it was withdrawing from the Yerrida North Joint Venture. Sandfire spent \$4.5M on exploration within the Yerrida North JV since the commencement of the joint venture in 2017, acquiring and compiling a comprehensive geological data package for future exploration, which will now revert to Great Western.



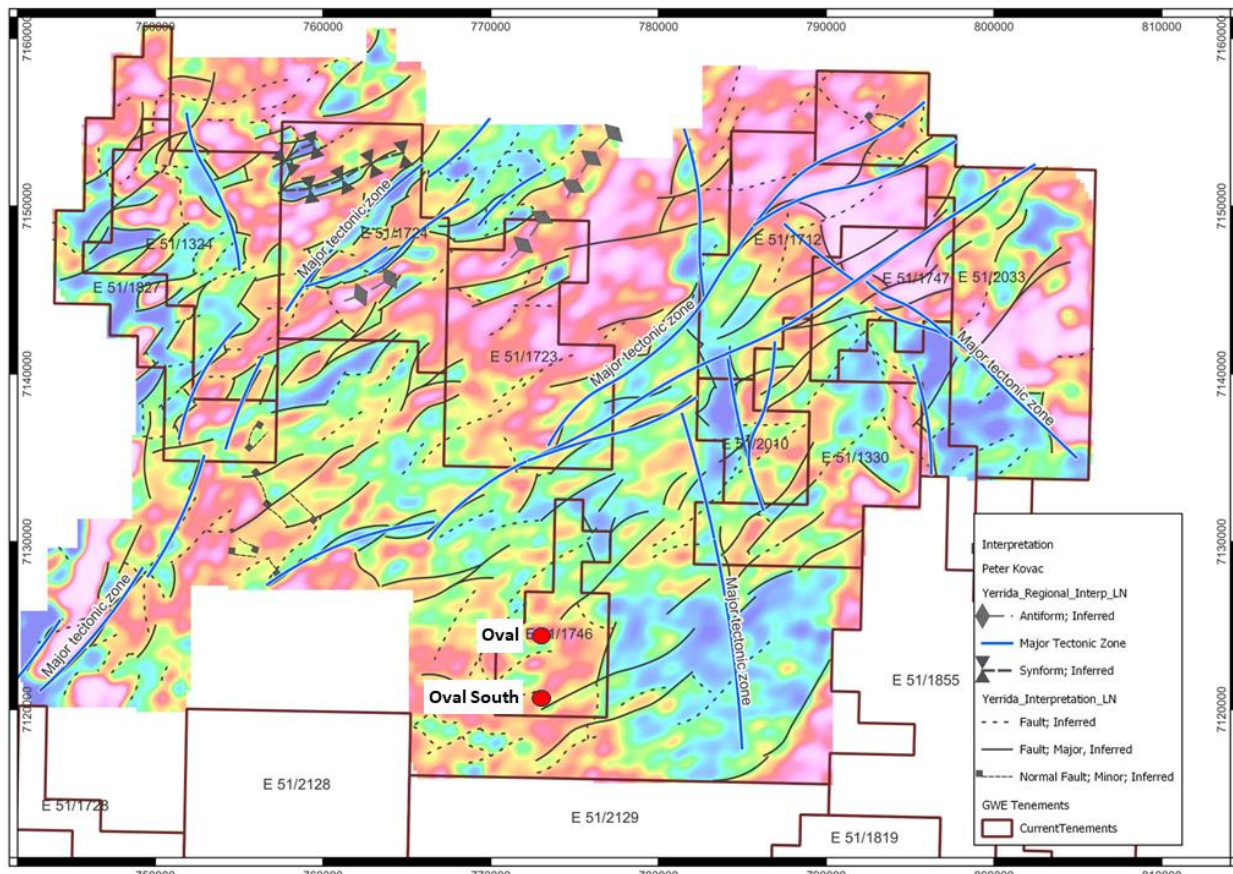


Figure 15: Airborne gravity gradiometry with interpreted major tectonic zones, and the Oval and Oval South Targets.

This data includes the basin models and legacy data compilation described above, plus geological mapping and surface geochemical sampling data, and data from several geophysical programmes completed by Sandfire since 2017.

Interpretation of this expansive data set by Sandfire resulted in several targets generated including Oval, a Rio Tinto VTEM target defined in the 1990s, interpreted to have not been effectively drill tested, and Oval South, a co-incident gravity-magnetic feature (Figure 15). Oval South is located on an east-west extensional structure, with potassic-magnetic alteration mapped at surface, and is interpreted as a potential mineralised intrusion warranting further exploration.

Great Western will now make its own assessment of the data generated by SFR and determine its forward exploration strategy.

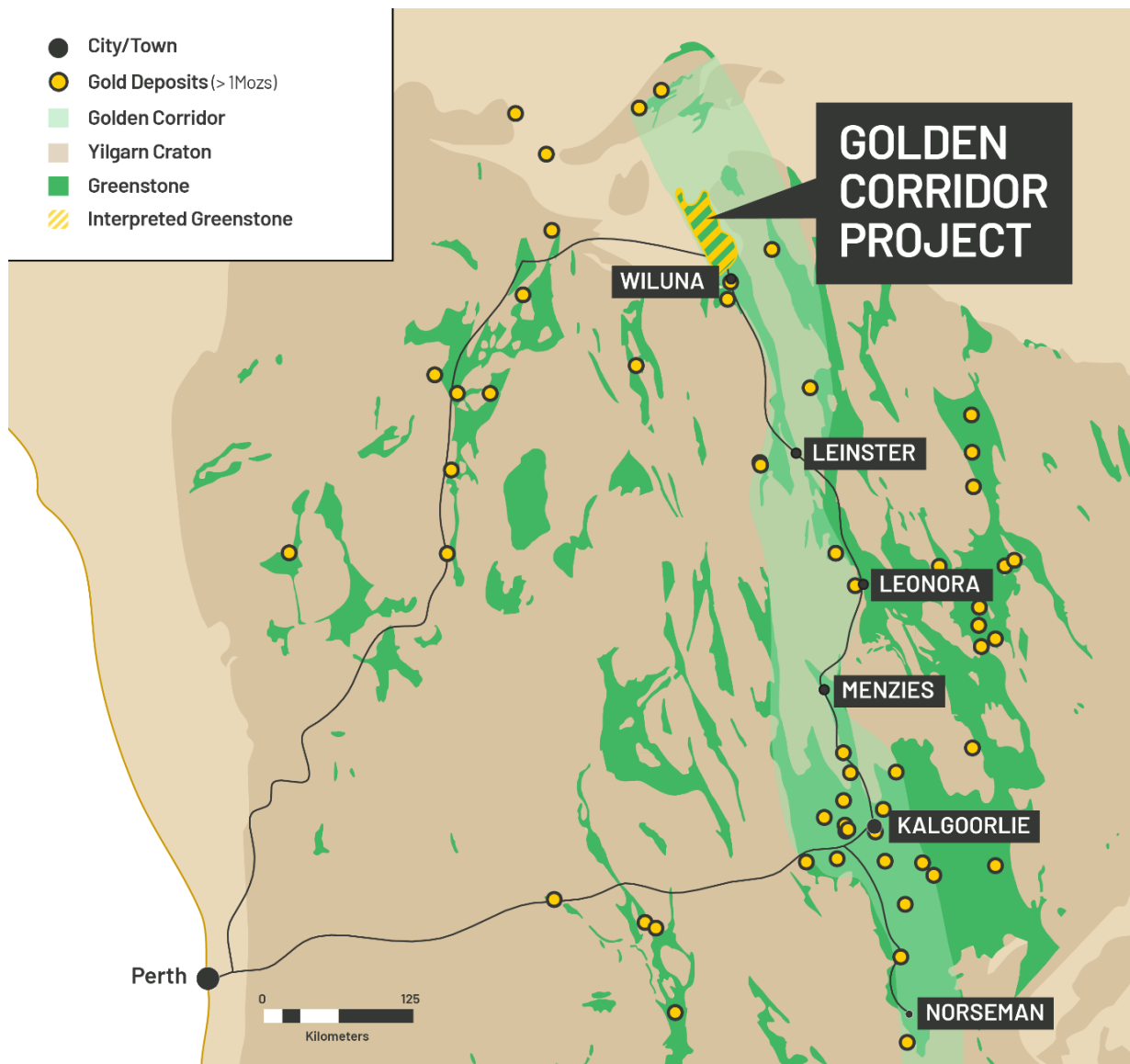
## Golden Corridor Project

GTE 100%

The Archean Wiluna-Norsemen Greenstone belt is one of Australia's most prolific mineral terrains, host to several multi-million-ounce gold and base metal deposits. The belt is interpreted to extend north-west from Wiluna and below Proterozoic Yerrida Basin cover. Great Western's Golden Corridor Project is located along this projected trend, on the eastern margin of the basin shown in Figure 16. Several Ultrafine+ soil anomalies have been defined at this location (Figure 17), which the Company interprets are zones of potential leakage from mineralised Archean Greenstone below basin cover.

Great Western was notified by the Western Australian Department of Mines that the Company's Co-Funded Exploration Drilling Application was approved. The Department will co-fund up to 50% of drilling costs to a maximum of \$110,000, with a maximum of \$5,000 for rig mobilisation also available to be used

to drill test the Company's basement model.



*Figure 16: The Golden Corridor is Australia's most important gold terrane and host to many of Australia's largest gold deposits.*

The Company's Archean Greenstone basement model was generated by the compilation of previously completed basement interpretation within the interpreted Wiluna Greenstone extension, with a 3D basement surface created. The model utilised previously completed gravity and magnetic inversion geophysical models, passive seismic data, geology logs from the limited drilling in the north-east of the basin margin, and government geological mapping and associated cross-sectional interpretation.

The model defined the depth to basement along the eastern margin was significantly less than government mapping predictions, with gravity data suggesting the basement is composed of Archean Greenstone (Wiluna-Norsemen Belt) rather than granitic terrain from government interpretation. No drilling had been completed at this location to an adequate depth to test the basement and, as a result, presents a compelling target.



For personal use only

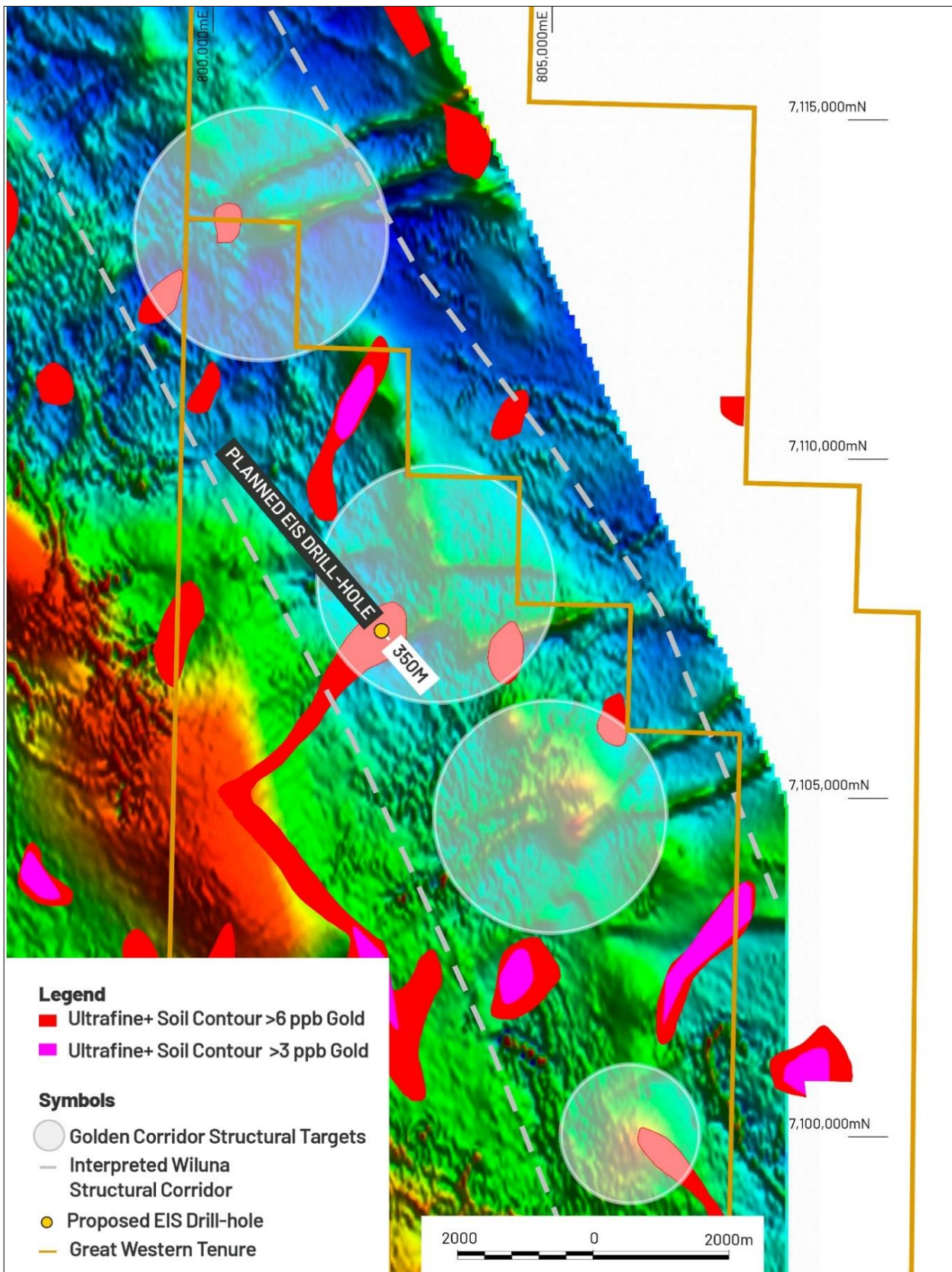


Figure 17: GC1 to GC4 aeromagnetic structural targets in relation to the anomalous gold contours (modified after GTE ASX Announcement 3 March 2022).

Great Western Exploration intends to drill a diamond hole from surface (Figure 17 and Figure 18), allowing detailed logging of the Yerrida Basin units, the basement contact, and the interpreted underlying Archean

Great Western Exploration Limited

Wiluna-Norsemen Greenstone rocks. The proposed diamond drill hole will be located within a north-east trending Ultrafine+ Soil anomaly, interpreted as a structural trend allowing leakage of underlying mineralised greenstone. This trend may be a fault uplift zone, where the basement is potentially closer to the surface than previously modelled.

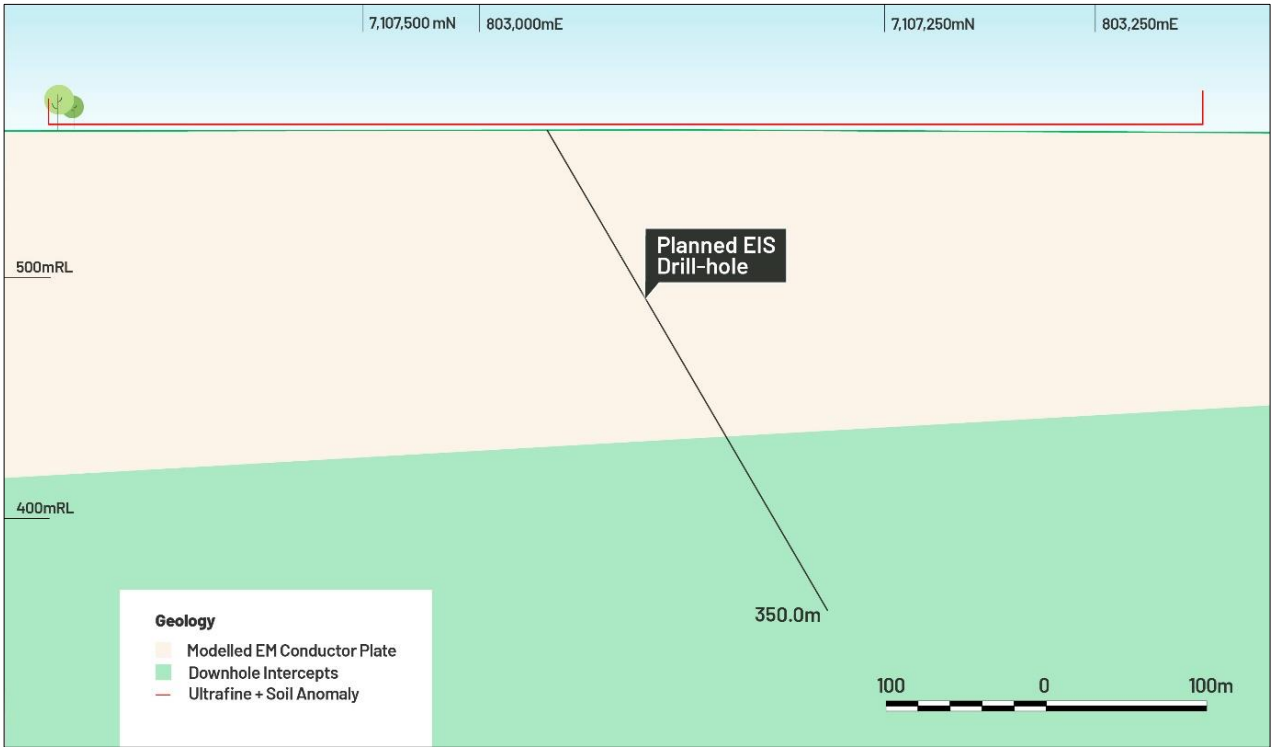


Figure 18: Cross section of Co-Funded drill-hole, with interpreted Yerrida Basin contact with Archean Wiluna-Norseman Greenstone.

Yandal West Project

GTE 80% (E53/1612)

The Yandal West Project is located within the world class Yandal Greenstone Belt, approximately 55km north of the Bronzewing Gold Mine and 60km south of the Jundee Gold Mine. A second phase of drilling was completed at Harris' Find in January 2023, which aimed to extend high-grade mineralisation below and along strike of previously announced significant legacy drill intercepts at this location, which included 7m @ 4.3g/t from 27m. Results from the drilling programme were received and shown in Figure 19 and Figure 20, and Table 1.

All drilled holes intersected the targeted mineralised structure; with predominately narrow low-grade results received from these intervals.

## Great Western Exploration Limited

Table 1: Harris' Find Phase 2 RC drilling results from the targeted Harris Find Structure (see Appendix 1 for further details)

Drill hole	Drill Type	From	To	Drill Intercept
GYWDD013	DD	55.2	56	NSA
GYWRC014	RC	46	47	1m @ 0.6 g/t Au
GYWRC015	RC	32	36	4m @ 0.84g/t Au
GYWRC016	RC	63	64	1m @ 2.84 g/t Au
GYWRC017	RC	44	51	7m @ 1.13g/t Au
<i>Including</i>		48	59	1m @ 3.16g/t Au
GYWRC018	RC	55	58	NSA
GYWRC019	RC	70	72	2m @ 0.81g/t

NSA: No significant Assay

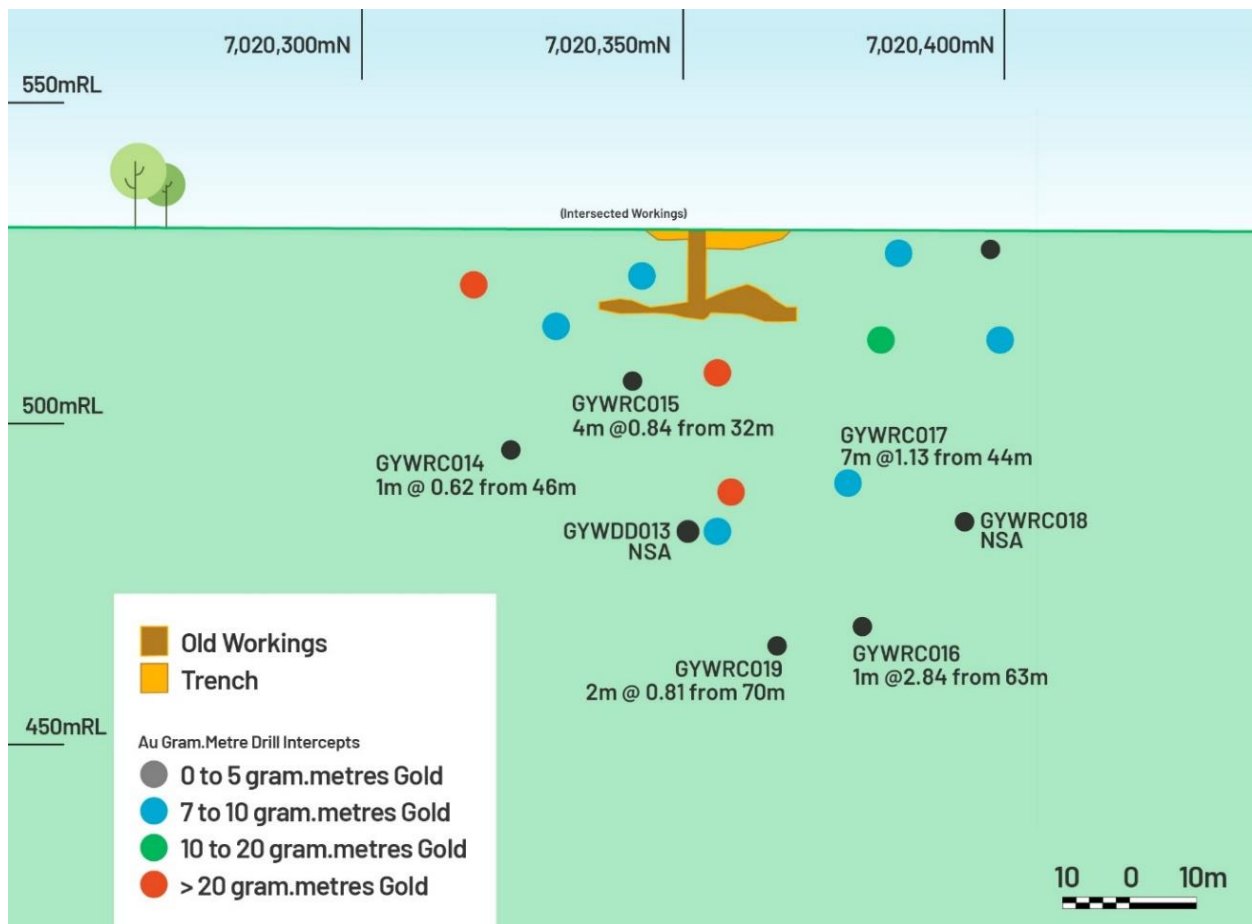


Figure 19: Harris' Find longitudinal section, with previously reported drill intercepts displayed, coloured by gold grams x drilled metres, and results of the Phase 2 RC drilling programme.

While the latest drill results downgraded Harris' Find, the structure is open 3km to the north from Harris' Find along the Barwidgee Fault, with previously reported anomalous RAB drilling results and high-grade rock-chips along strike.



Figure 20: Plan section of reported drill-hole results positions.

## Corporate

### Fund raisings

In April and May 2023, the Company completed a fund raising of \$2.85 million (before costs) by way of a placement of 71,250,000 ordinary shares at an issue price of \$0.04 per share ("Placement") to professional and sophisticated investors. The Placement ensures that Great Western is fully funded for its current exploration plans.

Euroz Hartleys Limited and Peloton Capital acted as Joint Lead Managers for the Placement. Great Western directors, Kevin Somes, Ross Williams and Grey Egerton-Warburton participated in the Placement following shareholder approval at a General Meeting held on 16 May 2023.

### Junior Mineral Exploration Incentive

Subsequent to 30 June 2023, the Company was successful in its application for participation in the Federal Government's Junior Mineral Exploration Incentive ("JMEI") Scheme for the 2023/2024 tax year. Great Western has received an allocation of up to \$1,050,000 in JMEI credits for the 2023/2024 tax year.

## Great Western Exploration Limited

The Federal Government's JMEI scheme encourages investment in exploration companies that undertake greenfields mineral exploration in Australia, by allowing these exploration companies to forgo a portion of their carried forward tax losses that have arisen from allowable expenditure on "greenfield" exploration for potential distribution to eligible investors. Great Western wish to acknowledge the support of the Federal Government in making the JMEI available.

### References

1. 28 March 2018 *Exploration Targets Reveal World Class Scale Potential*, Salt Lake Potash (S04:ASX), ASX Announcement.
2. 1 July 2021 *Lake Way Potash Project – Work Programme to Commence*, Great Western Exploration (GTE:ASX), ASX Announcement.
3. 22 May 2023 *Lake Way Potash Seismic Survey Defines Major Paleochannel*, Great Western Exploration (GTE:ASX), ASX Announcement

### Competent Person Statement

*The information in this report that relates to Exploration Results, Mineral Resources or Ore Reserves is based on information compiled by Mr. Shane Pike who is a member of the Australian Institute of Mining and Metallurgy. Mr. Pike is an employee of Great Western Exploration Limited and has sufficient experience which is relevant to the style of mineralisation and type of deposit under consideration and to the activity which he is undertaking to qualify as a Competent Person as defined in the 2012 Edition of the 'Australasian Code for Reporting of Exploration Results, Mineral Resources and Ore Reserves'. Mr. Pike consents to the inclusion in the report of the matters based on his information in the form and context in which it appears.*

For personal use only



## ***Sustainability***

Great Western Exploration Limited and the Board are committed to being a leading and sustainable Australian exploration company built on exploration and corporate success for the benefit of all of its stakeholders. The Company continues to review and update its Sustainability policies in compliance with new legislation and best practice. These policies apply to all our personnel and implementation of these policies and their supporting standards and procedures are required across all the Company exploration operations.

The Company's sustainability policies can be viewed on the Company's website, [www.greatwesternexploration.com.au](http://www.greatwesternexploration.com.au)

### **Environment**

The Company seeks to being effective environmental guardians and managing our impacts, whilst both achieving operational excellence and fulfilling our corporate social responsibilities. The Company is committed to positive environmental management outcomes to maintain and enhance performance.

The Company acknowledges the threat posed by climate change and will work to decarbonise our business in a measured, proportionate and sustainable manner.

### **Community**

The Company seeks to create enduring value for our local communities and limiting our negative impacts, whilst both achieving operational excellence and fulfilling our corporate social responsibilities.

### **Health & Safety**

The Company seeks to minimise the harm caused by workplace hazards whilst both achieving operational excellence and fulfilling our corporate social responsibilities. The Company is committed to leadership in health and safety through the use of responsible and reliable management systems to maintain and enhance performance. During the year, the Company updated its work, health and safe systems and procedures in compliance with the Western Australian WHS Act.

### **Governance**

Great Western Exploration Limited and the Board are committed to achieving and demonstrating the highest standards of corporate governance. Great Western Exploration has reviewed its corporate governance practices against the Corporate Governance Principles and Recommendations (4th edition) published by the ASX Corporate Governance Council.

The 2023 Corporate Governance Statement was approved by the Board on 14 September 2023 and is current as at 14 September 2023. A description of the Group's current corporate governance practices is set out in the Group's Corporate Governance Statement which along with the 2023 Appendix 4G can be viewed on the Company's website, [www.greatwesternexploration.com.au](http://www.greatwesternexploration.com.au).



# Great Western Exploration Limited

## DIRECTORS' REPORT

The Directors present the annual report of the Consolidated Group ("the Group") for the year ended 30 June 2023.

## DIRECTORS

The names of the Directors in office during the year and until the date of this report are as below. Directors were in office for the entire period unless otherwise stated.

Kevin Clarence Somes	Chairman
Shane Pike	Managing Director
Grey Egerton-Warburton	Non-executive Director
Ross Williams	Non-executive Director

### **Mr Kevin Clarence Somes FCA** **Non-executive Chairman**

#### *Experience and expertise*

Mr Somes is a fellow of the Institute of Chartered Accountants and was a partner of Somes & Cooke Chartered Accountants for over 25 years.

Mr Somes has extensive experience in the management of exploration companies, with Somes & Cooke being the auditors of a number of ASX listed mining companies during his tenure.

#### *Other current directorships*

None.

#### *Former directorships in last three years*

None.

#### *Share and Option holding in the Company*

8,017,233 Ordinary Shares

### **Mr Shane Pike** **Managing Director**

Mr Pike is a geologist with well over 20 years' of successful technical and management experience and a proven track record in gold and base metals exploration, discovery, project development in both open pit and underground mining. Mr Pike holds a Bachelor of Applied Science (Double Major Geology). Mr Pike was Exploration Manager (East Coast) for Evolution Mining Limited (ASX: EVN) (7 years), and Senior Exploration Geologist for Newcrest Mining Limited (ASX: NCM) (3 years) and Equigold NL (9 years). Mr Pike also served as Chief Executive Officer of Santana Minerals.

#### *Other current directorships*

None.

#### *Former directorships in last three years*

None.

#### *Share and Option holding in the Company*

Nil Ordinary Shares

5,000,000 zero exercise priced options which expire on 19/06/2027, (subject to Mr Pike remaining in employment during the relevant vesting period) and vesting on certain conditions.

# Great Western Exploration Limited

## DIRECTORS' REPORT (continued)

### **Mr Grey Egerton Warburton** **Non-executive Director**

Grey Egerton-Warburton has a strong background in corporate finance, with extensive experience in equity capital markets, acquisitions, divestments and domestic and international change of control transactions. Grey has led a substantial number of capital raisings and led many successful takeovers and mergers for ASX listed companies, across many sectors. Prior to his career in corporate finance Mr Egerton-Warburton practiced as a corporate solicitor at a tier one national law firm.

*Other current directorships*  
None.

*Former directorships in last three years*  
None.

*Share and Option holding in the Company*  
29,225,500 Ordinary Shares

### **Mr Ross Williams** **Non-executive Director**

Mr Ross Williams is a highly experienced Company Director and businessman, having co-founded a Mining Services business from start up through to ASX listing and a market capitalisation over \$400m with revenues in excess of \$500m. Ross held the role of Finance Director for 12 years and during this time was responsible for capital management, finance, financial reporting, corporate strategy and investor relations before retiring to a Non-Executive role. Mr Williams started his career in Banking and Finance and his listed company roles have also included Non-Executive Director of a successful Mining Company and Chairman of a listed investment Company.

*Other current directorships*  
None

*Former directorships in last three years*  
None.

*Share and Option holding in the Company*  
29,255,760 Ordinary Shares

## **COMPANY SECRETARY**

The Company Secretary is Mr Anthony Walsh. Mr Walsh was appointed company secretary on 4 June 2020.

Mr Walsh has over 30 years' experience in dealing with listed companies, ASX, ASIC and corporate transactions including 14 years with the ASX in Perth where he acted as ASX liaison with the JORC committee, four years as Chairman of an ASX listed mining explorer and as a director of a London AIM listed explorer. Mr Walsh is also currently Company Secretary of Legend Mining Limited. Mr Walsh is a member of the Australian Institute of Company Directors, a Fellow of the Governance Institute of Australia, the Institute of Chartered Secretaries and the Institute of Chartered Accountants in Australia. He is currently a non-executive director of the not-for-profit Women's and Infants Research Foundation.

For personal use only

# Great Western Exploration Limited

## DIRECTORS' REPORT (continued)

### NATURE OF OPERATIONS AND PRINCIPAL ACTIVITIES

The principal activities during the period of the entities within the consolidated entity were exploration for gold and base metals deposits in Australia.

### RESULTS OF OPERATIONS

The loss of the consolidated entity for the year after tax was \$5,861,986 (2022: \$598,504 loss).

### FINANCIAL POSITION

At the end of the financial year the Group had cash reserves of \$3,021,416 (2022: \$4,624,561) and incurred expenditure on exploration and evaluation of \$3,326,510 (2022: \$3,213,568) before write offs during the year.

### RISKS AND RISK MANAGEMENT

The Company attempts to mitigate risks that may affect its future performance through a systematic process of identifying, assessing, reporting and managing risks of corporate significance. Key operational risks and their management are recurring items for discussion at Board meetings.

The following discusses the Company's most significant business risks.

a) Exploration

Whilst considered highly prospective, the Company's tenements are early stage exploration tenements with limited exploration undertaken on them to date.

Exploration is a high risk undertaking. The Company's joint venture projects for copper, nickel and gold prospects in Australia are in the preliminary stages of exploration and no assurance is given that exploration of its current projects or any future projects will result in the delineation or discovery of a significant mineral resource. Even if a significant mineral resource is identified, there can be no guarantee that it can be economically exploited.

b) Commodity prices

As an explorer for copper, gold, nickel and potentially other minerals, any successes of the Company are expected to be closely related to the price of those and other commodities. Fluctuating prices in those commodities make market prices for securities in the Company more volatile than for other investments.

Commodities prices are affected by numerous factors beyond the control of the Company. These factors include worldwide and regional supply and demand for commodities, general world economic conditions and the outlook for interest rates, inflation and other economic factors on both a regional and global basis. These factors may have a positive or negative effect on the Company's exploration, project development and production plans and activities, together with the ability to fund those plans and activities.

# Great Western Exploration Limited

## DIRECTORS' REPORT (continued)

### c) Environmental

The Company's projects are subject to rules and regulations regarding environmental matters and the discharge of hazardous wastes and materials. As with all mineral projects, the Company's projects are expected to have a variety of environmental impacts should development proceed. Development of any of the Company's projects will be dependent on the Company satisfying environmental guidelines and, where required, being approved by government authorities.

The Company intends to conduct its activities in an environmentally responsible manner and in accordance with all applicable laws but may still be subject to accidents or other unforeseen events which may compromise its environmental performance and which may have adverse financial implications.

### d) Future capital needs.

The Company's ability to raise further capital (equity or debt) within an acceptable time of a sufficient amount and on terms acceptable to the Company will vary according to a number of factors, including prospectivity of projects (existing and future), the results of exploration, subsequent feasibility studies, development and mining, stock market and industry conditions and the price of relevant commodities and exchange rates.

No assurance can be given that future funding will be available to the Company on favourable terms (or at all). If adequate funds are not available on acceptable terms, the Company may not be able to further develop its projects and it may impact on the Company's ability to continue as a going concern.

## SIGNIFICANT CHANGES IN THE STATE OF AFFAIRS

There has been no significant change in the state of affairs of the Company during the financial year.

## DIVIDENDS

No dividends have been recommended by the Directors.

## MATTERS SUBSEQUENT TO THE END OF THE FINANCIAL YEAR

No matters or circumstances have arisen since the end of the year to the date of this report which have significantly affected, or may significantly affect, the operations of the Company, the results of those operations or the state of affairs of the Company, other than:

- On 17 August 2023 the Company announced that it had been advised by Sandfire Resources (Sandfire) that it was withdrawing from the Yerrida North Joint Venture (JV). Sandfire spent ~\$4.5M on exploration within the Yerrida North JV since the commencement of the joint venture in 2017, acquiring and compiling a comprehensive geological data package for future exploration, which will now revert to Great Western.
- On 1 August 2023 the Company announced RC drilling has been completed at the Firebird Gold Project, with 1,700m drilled. Assay results from this drilling are pending.

# Great Western Exploration Limited

## DIRECTORS' REPORT (continued)

### LIKELY DEVELOPMENTS AND EXPECTED RESULTS OF OPERATIONS

The Directors are not aware of any developments that might have a significant effect on the operations of the Company in subsequent financial years not already disclosed in this report.

### ENVIRONMENTAL REGULATIONS

Great Western Exploration Limited conducts its exploration activities in an environmentally sensitive manner, and believes it has adequate systems in place for the management of environmental requirements. The Company is not aware of any breach of statutory conditions or obligations.

The Directors have considered the enacted National Greenhouse and Energy Reporting Act 2007 (the NGER Act) which introduces a single national reporting framework for the reporting and dissemination of information about the greenhouse gas emissions, greenhouse gas projects, and energy use and production of corporations. At the current stage of development, the Directors have determined that the NGER Act will have no effect on the Company for the current, nor subsequent, financial year. The Directors will reassess this position as and when the need arises.

### DIRECTORS' MEETINGS

The Directors attended the following director meetings during the year and up to the date of this report:

	Meetings Eligible to Attend	Meetings Attended
Shane Pike	8	8
Kevin Somes	8	8
Grey Egerton-Warburton	8	8
Ross Williams	8	8

### DIRECTORS' INTERESTS IN THE SHARES AND OPTIONS OF THE COMPANY

The particulars of Directors' interest in shares and options are as at the date of this report:

	Ordinary Shares	Options
Shane Pike	-	5,000,000
Kevin Somes	8,017,233	-
Grey Egerton-Warburton	29,225,500	-
Ross Williams	29,255,760	-

### DIRECTORS AND OFFICERS INSURANCE

The Company has made an agreement to indemnify all the Directors and Officers against all indemnifiable losses or liabilities incurred by each Director and Officer in their capacities as Directors and Officers of the Company to the extent permitted by the Corporations Act 2001.

The Company has taken out an insurance policy at a premium of \$23,044 before GST (2022: \$23,044) in relation to Directors and Officers indemnity. Policy cover and premiums are unchanged from last year.

# Great Western Exploration Limited

## DIRECTORS' REPORT (continued)

### OUTSTANDING OPTIONS AT DATE OF REPORT

The following series of options were outstanding at the date of this report:

Grant Date	No of Options	Grant Date Fair Value	Exercise Price	Expiry Date	Vesting Date
20/06/2022	1,500,000	\$0.08	\$0.00	20/06/2027	20/06/2023
20/06/2022	1,500,000	\$0.08	\$0.00	20/06/2027	20/06/2024
20/06/2022	2,000,000	\$0.08	\$0.00	20/06/2027	20/06/2025
29/12/2020	1,200,000	\$0.0124	\$0.31	29/12/2023	29/12/2020
6/04/2021	2,750,000	\$0.0645	\$0.37	31/3/2024	6/4/2021
6/04/2021	1,250,000	\$0.0442	\$0.52	31/3/2024	6/4/2021
Total No.	10,200,000				

### PROCEEDINGS ON BEHALF OF COMPANY

No person has applied for leave of Court to bring proceedings on behalf of the company or intervene in any proceedings to which the company is a party for the purpose of taking responsibility on behalf of the company for all or any part of those proceedings.

The company was not a party to any such proceedings during the year.

### NON-AUDIT SERVICES

Hall Chadwick did not provide any non-audit services during the year ended 30 June 2023.

Details of the amounts paid or payable to the auditor for audit during the year are set out in Note 23.

### AUDITOR'S INDEPENDENCE DECLARATION

A copy of the Auditor's Independence Declaration, as required under section 307C of the Corporations Act 2001, is set out on page 71.

# Great Western Exploration Limited

## REMUNERATION REPORT (AUDITED)

### Remuneration Policy

This Remuneration Report outlines the director and executive remuneration arrangements of the Company in accordance with the requirements of the *Corporations Act 2001* and its Regulations. For the purposes of this report Key Management Personnel (KMP) of the Company are defined as those persons having authority and responsibility for planning, directing and controlling the major activities of the Company and its subsidiaries, directly or indirectly, including any director (whether executive or otherwise) of the Company.

For the purposes of this report, the term “executive” encompasses the Chief Executive and senior executives.

#### Directors

Shane Pike	Managing Director
Kevin Somes	Chairman (Non-executive)
Grey Egerton-Warburton	Non-executive Director
Ross Williams	Non-executive Director

There were no other changes of key management personnel after reporting date and before the financial report was authorised for issue.

Since the current Board was formed on 4 June 2020 with the appointment of Messrs Williams and Egerton-Warburton, directors’ fees have not been paid to any directors other than the Managing Director, Mr Shane Pike since his appointment.

The Company has established a Remuneration Committee, assumed by the Board, as a whole, which is responsible for determining and reviewing the remuneration arrangements of the directors and executives.

The Board assesses the appropriateness of the nature and amount of emoluments of such Directors and executives on an annual basis by reference to market and industry conditions.

In order for the Company to prosper, thereby creating shareholder value, the Company must be able to attract and retain the highest calibre executives.

Executive and non-executive directors, other key management personnel and other senior employees have been granted options over ordinary shares under the Company’s Employee Share Option Plan. The recipients of options are responsible for growing the Company and increasing shareholder value. If they achieve this goal the value of the options granted to them will also increase. Therefore, the options provide an incentive to the recipients to remain with the Company and to continue to work to enhance the Company’s value.

Due to the nature of the Company’s operations the current remuneration policy is not linked to the performance of the Company.

### Non-executive Directors’ remuneration

The Board seeks to set remuneration levels that provide the Company with the ability to attract and retain the highest calibre professionals.

Fees and payments to non-executive Directors reflect the demands that are made on and the responsibilities of the Directors from time to time.

## Great Western Exploration Limited

### REMUNERATION REPORT (AUDITED) (continued)

#### Remuneration Policy (continued)

Directors' fees are determined by the Board within the aggregate Directors fee limit approved by shareholders. The maximum currently approved by the Constitution stands at \$250,000.

Remuneration in the form of share options issued under the Company's Employee Share Option Plan is designed to reward Directors and executives in a manner aligned to the creation of shareholder wealth. Subject to shareholders' approval non-executive directors may participate in the Company's Employee Share Option Plan. The Board considers the grant of options to be reasonable given the necessity to attract and retain the highest calibre professionals to the Company.

Non-executive Directors receive superannuation benefits in accordance with the Superannuation Guarantee Legislation. Non-executive directors are permitted to salary sacrifice all or part of their fees.

Due to the nature of the Company's operation i.e. mineral exploration and development, the remuneration of directors and executives, at present, does not include performance-based incentives.

#### Executive Remuneration (including executive directors)

The Board aims to reward executives with a level and mix of remuneration commensurate with their position and responsibilities to align the interests of executives with those of shareholders and to ensure that remuneration is market competitive.

Remuneration consists of:

- Fixed Remuneration.  
Being base salary, non-monetary benefits and superannuation. Fixed remuneration is reviewed annually.
- Variable remuneration – Long term incentives.  
Being share options issued under the Company's Employee Share Option Plan. The options do not have any vesting conditions other than service conditions.

Remuneration issued in the form of share options issued under the Company's Employee Share Option Plan is designed to reward directors and executives in a manner aligned to the creation of shareholder wealth.

Due to the nature of the Company's operation i.e. mineral exploration and development, the remuneration of directors and executives, at present, does not include performance-based incentives.

The Company has entered into standard contracts with Directors, the details of which are set out below.



# Great Western Exploration Limited

## REMUNERATION REPORT (AUDITED) (continued)

### Remuneration of Key Management Personnel

2023	Short term benefits Salary & Wages	Other long term employee benefits	Superannuation	Remuneration/ entitlements relinquished	Total	Performance related %
<b>Name of Director:</b>						
<b>Executive director</b>						
Shane Pike <sup>(1)</sup>	\$310,000	\$200,906	\$32,550	-	\$543,456	0.0%
<b>Non-executive director</b>						
Kevin Somes	-	-	-	-	-	-
Ross Williams	-	-	-	-	-	-
Grey Egerton-Warburton	-	-	-	-	-	-
<b>Totals</b>	<b>\$310,000</b>	<b>\$200,906</b>	<b>\$32,550</b>	<b>-</b>	<b>\$543,456</b>	

2022	Short term benefits Salary & Wages	Other long term employee benefits	Superannuation	Remuneration/ entitlements relinquished	Total	Performance related %
<b>Name of Director:</b>						
<b>Executive director</b>						
Shane Pike <sup>(1)</sup>	\$58,423	\$54,627	\$5,669	-	\$118,719	0.0%
Thomas Ridges	\$250,034	\$111,123	\$25,003	(\$449,064)	(\$62,904)	0.0%
<b>Non-executive director</b>						
Kevin Somes	-	-	-	-	-	-
Ross Williams	-	-	-	-	-	-
Grey Egerton-Warburton	-	-	-	-	-	-
<b>Totals</b>	<b>\$308,457</b>	<b>\$165,750</b>	<b>\$30,672</b>	<b>(\$449,064)</b>	<b>\$55,815</b>	

<sup>(1)</sup> Shane Pike was appointed on 19 April 2022 with a salary of \$310,000 per annum plus superannuation and a notice period of three (3) months by either the Company or Mr Pike.

<sup>(2)</sup> Thomas Ridges was appointed on 10 October 2020 with a salary of \$273,973 per annum plus superannuation. Mr Ridges resigned from the Company on 14<sup>th</sup> April 2022. Options not vested at date of resignation lapsed on their terms, being the date Mr Ridges ceased to be a director of the Company.

### Options granted as part of remuneration

No options were issued to directors during the year ended 30 June 2023.

The following options were issued to directors during the year ended 30 June 2022.

	Grant Date	No. of Options	Exercise price	Vesting Date	Expiry Date	Value of Options Granted
Shane Pike	20 June 2022	1,500,000	\$0.00	20 June 2023	20 June 2027	\$120,000
Shane Pike	20 June 2022	1,500,000	\$0.00	20 June 2024	20 June 2027	\$120,000
Shane Pike	20 June 2022	2,000,000	\$0.00	20 June 2025	20 June 2027	\$160,000

# Great Western Exploration Limited

## REMUNERATION REPORT (AUDITED) (continued)

### Options granted as part of remuneration

For details on the valuation of options, including models and assumptions used, refer to Note 17.

There were no alterations to the terms and conditions of options granted as remuneration since their grant date.

### Option Holding of Key Management Personnel

30 June 2023	Balance at 1 July 2022	Granted	Expired	Lapsed	Balance at 30 June 2023	Vested
<b>Directors</b>						
Shane Pike	5,000,000	-	-	-	5,000,000	1,500,000
Kevin Somes	-	-	-	-	-	n/a
Grey Egerton-Warburton	-	-	-	-	-	n/a
Ross Williams	-	-	-	-	-	n/a
	5,000,000	-	-	-	5,000,000	1,500,000

30 June 2022	Balance at 1 July 2021	Granted	Expired	Lapsed	Balance at 30 June 2022	Vested
<b>Directors</b>						
Shane Pike <sup>(1)</sup>	-	5,000,000	-	-	5,000,000	Nil
Thomas Ridges <sup>(2)</sup>	5,000,000	-	-	(3,500,000)	1,500,000	1,500,000
Kevin Somes	-	-	-	-	-	n/a
Grey Egerton-Warburton	-	-	-	-	-	n/a
Ross Williams	-	-	-	-	-	n/a
	5,000,000	5,000,000	-	(3,500,000)	6,500,000	1,500,000

### Shareholdings of Key Management Personnel

30 June 2023	Balance 1 July 2022	Granted as Remuneration	On exercise of Options	Net Change Other	Balance 30 June 2023
<b>Directors</b>					
Shane Pike	-	-	-	-	-
Kevin Somes	5,517,233	-	-	2,500,000	8,017,233
Grey Egerton-Warburton	24,225,500	-	-	5,000,000	29,225,500
Ross Williams	24,255,760	-	-	5,000,000	29,255,760
	53,998,493	-	-	12,500,000	66,498,493

## Great Western Exploration Limited

### REMUNERATION REPORT (AUDITED) (continued)

#### Shareholdings of Key Management Personnel

30 June 2022	Balance 1 July 2021	Granted as Remuneration	On exercise of Options	Net Change Other	Balance 30 June 2022
Directors					
Shane Pike <sup>(1)</sup>	-	-	-	-	-
Thomas Ridges <sup>(2)</sup>	-	-	-	-	-
Kevin Somes	4,267,233	-	-	1,250,000	5,517,233
Grey Egerton- Warburton	20,000,000	-	-	4,225,500	24,225,500
Ross Williams	20,030,260	-	-	4,225,500	24,255,760
	44,297,493	-	-	9,701,000	53,998,493

<sup>(1)</sup> Shane Pike was appointed on 19 April 2022.

<sup>(2)</sup> Thomas Ridges was appointed on 10 October 2020 and resigned from the Company on 14<sup>th</sup> April 2022. Options not vested at date of resignation lapsed on their terms, being the date Mr Ridges ceased to be a director of the Company.

#### Transactions with Key Management Personnel

There were no transactions with Key Management Personnel during the year (2022: Nil).


END OF REMUNERATION REPORT (AUDITED)

## Great Western Exploration Limited

### DIRECTORS' REPORT (continued)

This Report of Directors, incorporating the Remuneration Report, is signed in accordance with a resolution of the Directors.

Dated this 14<sup>th</sup> day of September 2023

A handwritten signature in black ink, appearing to be 'Shane Pike', written over a horizontal line.

Shane Pike  
Managing Director

For personal use only

# Great Western Exploration Limited

ABN 53 123 631 470

## CONSOLIDATED STATEMENT OF PROFIT OR LOSS AND OTHER COMPREHENSIVE INCOME FOR THE YEAR ENDED 30 JUNE 2023

	Note	Consolidated 30.06.2023 \$	Consolidated 30.06.2022 \$
Interest revenue		30,027	592
Other income		-	-
Employee benefits expense	16	(189,737)	(274,592)
Administration costs		(536,358)	(336,147)
Depreciation		(13,695)	(10,150)
Compliance and regulatory		(61,058)	(63,009)
Share based payments	17	(200,906)	97,634
Mineral exploration written off	11	(4,890,259)	(12,832)
<b>Loss before income tax</b>		<b>(5,861,986)</b>	<b>(598,504)</b>
Income tax expense		-	-
<b>Loss for the period</b>		<b>(5,861,986)</b>	<b>(598,504)</b>
<b>Other comprehensive income</b>		-	-
<b>Total comprehensive income for the period attributable to members</b>		<b>(5,861,986)</b>	<b>(598,504)</b>
<b>Earnings per share</b>			
From continuing operations:			
Basic earnings per share (cents)	6	<b>(3.02)</b>	<b>(0.43)</b>

The accompanying notes form part of this consolidated financial report.

# Great Western Exploration Limited

ABN 53 123 631 470

## CONSOLIDATED STATEMENT OF FINANCIAL POSITION AS AT 30 JUNE 2023

	Note	Consolidated 30.06.2023 \$	Consolidated 30.06.2022 \$
<b>ASSETS</b>			
<b>CURRENT ASSETS</b>			
Cash and cash equivalents	7	3,021,416	4,624,561
Trade and other receivables	8	446,178	400,498
Other assets	9	400	400
<b>TOTAL CURRENT ASSETS</b>		<b>3,467,994</b>	<b>5,025,459</b>
<b>NON-CURRENT ASSETS</b>			
Plant and equipment	10	26,676	30,069
Mineral exploration expenditure	11	12,155,832	13,719,581
<b>TOTAL NON-CURRENT ASSETS</b>		<b>12,182,508</b>	<b>13,749,650</b>
<b>TOTAL ASSETS</b>		<b>15,650,502</b>	<b>18,775,109</b>
<b>CURRENT LIABILITIES</b>			
Trade and other payables	12	302,390	424,637
Provisions		37,310	22,365
<b>TOTAL CURRENT LIABILITIES</b>		<b>339,700</b>	<b>447,002</b>
<b>TOTAL LIABILITIES</b>		<b>339,700</b>	<b>447,002</b>
<b>NET ASSETS</b>		<b>15,310,802</b>	<b>18,328,107</b>
<b>EQUITY</b>			
Issued capital	13	44,466,129	41,432,354
Reserves	13	1,621,556	1,810,650
Accumulated losses		(30,776,883)	(24,914,897)
<b>TOTAL EQUITY</b>		<b>15,310,802</b>	<b>18,328,107</b>

The accompanying notes form part of this consolidated financial report.

# Great Western Exploration Limited

ABN 53 123 631 470

## CONSOLIDATED STATEMENT OF CHANGES IN EQUITY FOR THE YEAR ENDED 30 JUNE 2023

		Issued Capital	Option Reserves	Accumulated Losses	Total
		\$	\$		\$
<b>Consolidated</b>					
<b>Balance at 1.07.2022</b>		<b>41,432,354</b>	<b>1,810,650</b>	<b>(24,914,897)</b>	<b>18,328,107</b>
Loss for the period		-	-	(5,861,986)	(5,861,986)
Other comprehensive income for the period		-	-	-	-
Total comprehensive Income for the period		-	-	(5,861,986)	(5,861,986)
Share issue	13	2,850,000	-	-	2,850,000
Options issued	13	390,000	(390,000)	-	-
Share based payments	17	-	200,906	-	200,906
Issue costs	13	(206,225)	-	-	(206,225)
<b>Balance at 30.06.2023</b>		<b>44,466,129</b>	<b>1,621,556</b>	<b>(30,776,883)</b>	<b>15,310,802</b>
<b>Consolidated</b>					
<b>Balance at 1.07.2021</b>		<b>38,168,373</b>	<b>1,908,284</b>	<b>(24,316,393)</b>	<b>15,760,264</b>
Loss for the period		-	-	(598,504)	(598,504)
Other comprehensive income for the period		-	-	-	-
Total comprehensive Income for the period		-	-	(598,504)	(598,504)
Share issue	13	3,500,000	-	-	3,500,000
Options issued		-	54,627	-	54,627
Options lapsed		-	(152,261)	-	(152,261)
Issue costs		(236,019)	-	-	(236,019)
<b>Balance at 30.06.2022</b>		<b>41,432,354</b>	<b>1,810,650</b>	<b>(24,914,897)</b>	<b>18,328,107</b>

The accompanying notes form part of this consolidated financial report.

# Great Western Exploration Limited

ABN 53 123 631 470

## CONSOLIDATED STATEMENT OF CASH FLOWS FOR THE YEAR ENDED 30 JUNE 2023

		Consolidated 30.06.2023 \$	Consolidated 30.06.2022 \$
<b>CASH FLOWS FROM OPERATING ACTIVITIES</b>			
Payments to suppliers and employees		(634,124)	(559,413)
Government grant received		-	-
Interest received		30,027	592
Net cash used in operating activities	14	<u>(604,097)</u>	<u>(558,821)</u>
<b>CASH FLOWS FROM INVESTING ACTIVITIES</b>			
Deposits paid on exploration tenements		(99,465)	(290,413)
Refund on withdrawal of applications		-	17,864
Purchase of property, plant and equipment		(6,695)	(12,994)
Payments for mineral exploration expenditure		<u>(3,515,249)</u>	<u>(2,995,929)</u>
Net cash used in investing activities		<u>(3,621,409)</u>	<u>(3,281,472)</u>
<b>CASH FLOWS FROM FINANCING ACTIVITIES</b>			
Proceeds from issue of shares and options		2,850,000	3,500,000
Securities issue costs		<u>(227,639)</u>	<u>(259,621)</u>
Net cash provided by financing activities		<u>2,622,361</u>	<u>3,240,379</u>
Net decrease in cash held		(1,603,145)	(599,914)
Cash and cash equivalents at beginning of period		<u>4,624,561</u>	<u>5,224,475</u>
Cash and cash equivalents at end of period		<u><b>3,021,416</b></u>	<u><b>4,624,561</b></u>

The accompanying notes form part of this consolidated financial report.



# Great Western Exploration Limited

ABN 53 123 631 470

## NOTES TO THE CONSOLIDATED FINANCIAL STATEMENTS FOR THE YEAR ENDED 30 JUNE 2023

These financial statements and notes represent those of Great Western Exploration Limited ('the Company') and its controlled entities ('the Group').

The financial statements were authorised for issue on 14 September 2023 by the Directors of the Company.

### **NOTE 1: BASIS OF PREPARATION**

The financial statements are general purpose financial statements that have been prepared in accordance with Australian Accounting Standards, Australian Accounting Interpretations, other authoritative pronouncements of the Australian Accounting Standards Board (AASB) and the Corporations Act 2001. The Group is a for-profit entity for financial reporting purposes under Australian Accounting Standards.

Australian Accounting Standards set out accounting policies that the AASB has concluded would result in financial statements containing relevant and reliable information about transactions, events and conditions. Compliance with Australian Accounting Standards ensures that the financial statements and notes also comply with International Financial Reporting Standards as issued by the IASB. Material accounting policies adopted in the preparation of these financial statements are presented below and have been consistently applied unless stated otherwise.

Except for cash flow information, the financial statements have been prepared on an accruals basis and are based on historical costs, modified, where applicable, by the measurement at fair value of selected non-current assets, financial assets and financial liabilities.

#### **a) Going Concern**

The financial report has been prepared on the going concern basis, which contemplates the continuity of normal business activity, and the realisation of assets and the settlement of liabilities in the ordinary course of business.

The Group incurred a loss for the year of \$5,861,986 (2022: \$598,504). The Group has a working capital surplus of \$3,128,294 at 30 June 2023 (2022: \$4,578,457). The Group has ongoing expenditures in respect of administration costs and exploration and evaluation expenditure on its Australian exploration projects.

The Directors believe that at the date of signing of the financial statements that the Group has sufficient funds to meet its obligations as and when they fall due and continue to proceed with the Group's objectives beyond the currently committed expenditure for the 12-month period from the date of signing this financial report.

The financials do not include any adjustments relating to the recoverability and classification of recorded asset amounts and classification of liabilities that might be necessary, should the Group not continue as a going concern and meet its debts as and when they fall due.

#### **b) Principles of Consolidation**

The consolidated financial statements incorporate the assets, liabilities and results of entities controlled by Great Western Exploration Limited at the end of the reporting period. A controlled entity is any entity over which Great Western Exploration Limited has the ability and right to govern the financial and operating policies so as to obtain benefits from the entity's activities.

Where controlled entities have entered or left the Group during the year, the financial performance of those entities is included only for the period of the year that they were controlled. A list of controlled entities is contained in Note 19 to the financial statements.

# Great Western Exploration Limited

ABN 53 123 631 470

## NOTES TO THE CONSOLIDATED FINANCIAL STATEMENTS FOR THE YEAR ENDED 30 JUNE 2023

### NOTE 1. BASIS OF PREPARATION (continued)

In preparing the consolidated financial statements, all intragroup balances and transactions between entities in the consolidated group have been eliminated in full on consolidation.

Non-controlling interests, being the equity in a subsidiary not attributable, directly or indirectly, to a parent, are reported separately within the equity section of the consolidated statement of financial position and statement of comprehensive income. The non-controlling interests in the net assets comprise their interests at the date of the original business combination and their share of changes in equity since that date.

#### Business combinations

Business combinations occur where an acquirer obtains control over one or more businesses.

A business combination is accounted for by applying the acquisition method, unless it is a combination involving entities or businesses under common control. The business combination will be accounted for from the date that control is attained, whereby the fair value of the identifiable assets acquired and liabilities (including contingent liabilities) assumed is recognised (subject to certain limited exemptions).

When measuring the consideration transferred in the business combination, any asset or liability resulting from a contingent consideration arrangement is also included. Subsequent to initial recognition, contingent consideration classified as equity is not remeasured and its subsequent settlement is accounted for within equity. Contingent consideration classified as an asset or liability is remeasured in each reporting period to fair value, recognising any change to fair value in profit or loss, unless the change in value can be identified as existing at acquisition date.

All transaction costs incurred in relation to business combinations are expensed to the Statement of Profit or Loss and Other Comprehensive income.

The acquisition of a business may result in the recognition of goodwill or a gain from a bargain purchase.

#### Goodwill

- (i) The consideration transferred;
- (ii) Any non-controlling interest, and
- (iii) The acquisition date fair value of any previously held equity interest over the acquisition date fair value of net identifiable assets acquired.

The acquisition date fair value of the consideration transferred for a business combination plus the acquisition date fair value of any previously held equity interest shall form the cost of the investment in the separate financial statements.

Fair value uplifts in the value of pre-existing equity holdings are taken to the statement of comprehensive income. Where changes in the value of such equity holdings had previously been recognised in other comprehensive income, such amounts are recycled to profit or loss.

The amount of goodwill recognised on acquisition of each subsidiary in which the Company holds less than a 100% interest will depend on the method adopted in measuring the non-controlling interest. The Company can elect in most circumstances to measure the non-controlling interest in the acquire either at fair value (full goodwill method) or at the non-controlling interest's proportionate share of the subsidiary's identifiable net assets (proportionate interest method). In such circumstances, the Company determines which method to adopt for each acquisition and this is stated in the respective notes to these financial statements disclosing the business combination.

Under the full goodwill method, the fair value of the non-controlling interests is determined using valuation techniques which make the maximum use of market information where available. Under this method, goodwill attributable to the non-controlling interests is recognised in the consolidated financial statements.

# Great Western Exploration Limited

ABN 53 123 631 470

## NOTES TO THE CONSOLIDATED FINANCIAL STATEMENTS FOR THE YEAR ENDED 30 JUNE 2023

### NOTE 1. BASIS OF PREPARATION (continued)

Goodwill on acquisition of subsidiaries is included in intangible assets. Goodwill on acquisition of associates is included in investments in associates.

Goodwill is tested for impairment annually and is allocated to the Company's cash-generating units or groups of cash-generating units, representing the lowest level at which goodwill is monitored not larger than an operating segment. Gains and losses on the disposal of an entity include the carrying amount of goodwill related to the entity disposed of.

#### c) Application of New and Revised Accounting Standards

##### (i) New, revised or amending Accounting Standards and Interpretations adopted

The company has adopted all of the new, revised or amending Accounting Standards and Interpretations issued by the Australian Accounting Standards Board ('AASB') that are mandatory for the current reporting period. The adoption of these Accounting Standards and Interpretations did not have any significant impact on the financial performance or position of the company during the financial year.

Any new, revised or amending Accounting Standards or Interpretations that are not yet mandatory have not been early adopted.

##### (ii) Accounting Standards that are mandatorily effective for the current reporting year

The company has adopted all of the new and revised Standards and Interpretations issued by the Australian Accounting Standards Board (the AASB) that are relevant to its operations and effective for an accounting period that begins on or after 1 July 2022.

###### *Changes in accounting policies on initial application of Accounting Standards*

In the year ended 30 June 2023, the directors have reviewed all the new and revised Standards and Interpretations issued by the AASB that are relevant to the company's operations and effective for annual reporting periods beginning on or after 1 July 2022. As a result of this review, the Directors have determined that there is no material impact of any new and revised Standards and Interpretations issued by the AASB.

###### *Standards and Interpretations in issue not yet adopted*

The Directors have also reviewed all of the new and revised Standards and Interpretations in issue not yet adopted for the year ending 30 June 2023. As a result of this review, the Directors have determined that there is no material impact of the new and revised Standards and Interpretations in issue not yet adopted on the company and therefore no material change is necessary to company accounting policies.

#### d) Cash and Cash Equivalents

Cash and cash equivalents in the statement of financial position comprise cash at bank and in hand and short-term deposits with an original maturity of six months or less that are readily convertible to known amounts of cash and which are subject to an insignificant risk of changes in value.

#### e) Trade and Other Receivables

Trade receivables, which generally have 30-day terms, are recognised initially at fair value and subsequently measured at amortised cost using the effective interest method, less an allowance for impairment. Collectability of trade receivables is reviewed on an ongoing basis. Debts that are known to be uncollectible are written off when identified. An impairment provision is recognised when there is objective evidence that the Company will not be able to collect the receivable.

# Great Western Exploration Limited

ABN 53 123 631 470

## NOTES TO THE CONSOLIDATED FINANCIAL STATEMENTS FOR THE YEAR ENDED 30 JUNE 2023

### NOTE 1. BASIS OF PREPARATION (continued)

#### f) Financial Instruments

##### (1) (i) Classification of financial instruments

The Group classifies its financial assets into the following measurement categories:

- those to be measured at fair value (either through other comprehensive income, or through profit or loss); and
- those to be measured at amortised cost.

The classification depends on the Group's business model for managing financial assets and the contractual terms of the financial assets' cash flows.

The Group classifies its financial liabilities at amortised cost unless it has designated liabilities at fair value through profit or loss or is required to measure liabilities at fair value through profit or loss such as derivative liabilities.

##### (ii) Financial assets measured at amortised cost

###### Debt instruments

Investments in debt instruments are measured at amortised cost where they have:

- contractual terms that give rise to cash flows on specified dates, that represent solely payments of principal and interest on the principal amount outstanding; and
- are held within a business model whose objective is achieved by holding to collect contractual cash flows.

These debt instruments are initially recognised at fair value plus directly attributable transaction costs and subsequently measured at amortised cost. The measurement of credit impairment is based on the three-stage expected credit loss model described below in Note (3) Impairment of financial assets.

##### (iii) Financial assets measured at fair value through other comprehensive income

###### Equity instruments

Investment in equity instruments that are neither held for trading nor contingent consideration recognised by the Group in a business combination to which AASB 3 "Business Combination" applies, are measured at fair value through other comprehensive income, where an irrevocable election has been made by management.

Amounts presented in other comprehensive income are not subsequently transferred to profit or loss. Dividends on such investments are recognised in profit or loss unless the dividend clearly represents a recovery of part of the cost of the investment.

Items at fair value through profit or loss Items at fair value through profit or loss comprise:

- items held for trading;
- items specifically designated as fair value through profit or loss on initial recognition; and
- debt instruments with contractual terms that do not represent solely payments of principal and interest.

Financial instruments held at fair value through profit or loss are initially recognised at fair value, with transaction costs recognised in the income statement as incurred. Subsequently, they are measured at fair value and any gains or losses are recognised in the income statement as they arise.

Where a financial asset is measured at fair value, a credit valuation adjustment is included to reflect the credit worthiness of the counterparty, representing the movement in fair value attributable to changes in credit risk.

# Great Western Exploration Limited

ABN 53 123 631 470

## NOTES TO THE CONSOLIDATED FINANCIAL STATEMENTS FOR THE YEAR ENDED 30 JUNE 2023

### NOTE 1. BASIS OF PREPARATION (continued)

#### (2) Financial instruments held for trading

A financial instrument is classified as held for trading if it is acquired or incurred principally for the purpose of selling or repurchasing in the near term, or forms part of a portfolio of financial instruments that are managed together and for which there is evidence of short-term profit taking, or it is a derivative not in a qualifying hedge relationship.

Financial instruments designated as measured at fair value through profit or loss

Upon initial recognition, financial instruments may be designated as measured at fair value through profit or loss. A financial asset may only be designated at fair value through profit or loss if doing so eliminates or significantly reduces measurement or recognition inconsistencies (i.e. eliminates an accounting mismatch) that would otherwise arise from measuring financial assets or liabilities on a different basis.

A financial liability may be designated at fair value through profit or loss if it eliminates or significantly reduces an accounting mismatch or:

- if a host contract contains one or more embedded derivatives; or
- if financial assets and liabilities are both managed and their performance evaluated on a fair value basis in accordance with a documented risk management or investment strategy.

Where a financial liability is designated at fair value through profit or loss, the movement in fair value attributable to changes in the Group's own credit quality is calculated by determining the changes in credit spreads above observable market interest rates and is presented separately in other comprehensive income.

#### (3) Impairment of financial assets

The Group applies a three-stage approach to measuring expected credit losses (ECLs) for the following categories of financial assets that are not measured at fair value through profit or loss:

- debt instruments measured at amortised cost and fair value through other comprehensive income;
- loan commitments; and
- financial guarantee contracts.

No ECL is recognised on equity investments.

#### Determining the stage for impairment

At each reporting date, the Group assesses whether there has been a significant increase in credit risk for exposures since initial recognition by comparing the risk of default occurring over the remaining expected life from the reporting date and the date of initial recognition. The Group considers reasonable and supportable information that is relevant and available without undue cost or effort for this purpose. This includes quantitative and qualitative information and also, forward-looking analysis.

An exposure will migrate through the ECL stages as asset quality deteriorates. If, in a subsequent period, asset quality improves and also reverses any previously assessed significant increase in credit risk since origination, then the provision for doubtful debts reverts from lifetime ECL to 12-months ECL. Exposures that have not deteriorated significantly since origination are considered to have a low credit risk. The provision for doubtful debts for these financial assets is based on a 12-months ECL. When an asset is uncollectible, it is written off against the related provision. Such assets are written off after all the necessary procedures have been completed and the amount of the loss has been determined. Subsequent recoveries of amounts previously written off reduce the amount of the expense in the income statement.

The Group assesses whether the credit risk on an exposure has increased significantly on an individual or collective basis. For the purposes of a collective evaluation of impairment, financial instruments are grouped on the basis of shared credit risk characteristics, taking into account instrument type, credit risk ratings, date of initial recognition, remaining term to maturity, industry, geographical location of the borrower and other relevant factors.

# Great Western Exploration Limited

ABN 53 123 631 470

## NOTES TO THE CONSOLIDATED FINANCIAL STATEMENTS FOR THE YEAR ENDED 30 JUNE 2023

### NOTE 1. BASIS OF PREPARATION (continued)

#### (4) Recognition and derecognition of financial instruments

A financial asset or financial liability is recognised in the balance sheet when the Group becomes a party to the contractual provisions of the instrument, which is generally on trade date. Loans and receivables are recognised when cash is advanced (or settled) to the borrowers.

Financial assets at fair value through profit or loss are recognised initially at fair value. All other financial assets are recognised initially at fair value plus directly attributable transaction costs.

The Group derecognises a financial asset when the contractual cash flows from the asset expire or it transfers its rights to receive contractual cash flows from the financial asset in a transaction in which substantially all the risks and rewards of ownership are transferred.

Any interest in transferred financial assets that is created or retained by the Group is recognised as a separate asset or liability.

A financial liability is derecognised from the balance sheet when the Group has discharged its obligation or the contract is cancelled or expires.

#### (5) Offsetting

Financial assets and liabilities are offset and the net amount is presented in the balance sheet when the Group has a legal right to offset the amounts and intends to settle on a net basis or to realise the asset and settle the liability simultaneously.

#### g) Property, Plant and Equipment

Plant and equipment is stated at historical cost less accumulated depreciation and any accumulated impairment losses.

Depreciation is calculated on a straight-line basis over the estimated useful life of the assets as follows:

Plant and Equipment – over 6 to 15 years

Motor Vehicles – over 4 years

Computer Equipment – over 3 years

The assets' residual values, useful lives and amortisation methods are reviewed, and adjusted if appropriate, at each financial year end.

An item of property, plant and equipment is derecognised upon disposal or when no further future economic benefits are expected from its use or disposal.

Any gain or loss arising on de-recognition of the asset (calculated as the difference between the net disposal proceeds and the carrying amount of the asset) is included in profit or loss in the year the asset is derecognised.

#### h) Exploration and Evaluation Expenditure

Exploration and evaluation costs are capitalised as exploration and evaluation assets on a project by project basis pending determination of the technical feasibility and commercial viability of the project. The capitalised costs are presented as either tangible or intangible exploration and evaluation assets according to the nature of the assets acquired.

# Great Western Exploration Limited

ABN 53 123 631 470

## NOTES TO THE CONSOLIDATED FINANCIAL STATEMENTS FOR THE YEAR ENDED 30 JUNE 2023

### **NOTE 1. BASIS OF PREPARATION (continued)**

When a licence is relinquished or a project abandoned, the related costs are recognised in the Statement of Comprehensive Income immediately.

Exploration and evaluation assets shall be assessed for impairment when facts and circumstances suggest that the carrying amount of an exploration and evaluation asset may exceed its recoverable amount. When facts and circumstances suggest that the carrying amount exceeds the recoverable amount an impairment loss is recognised in the Statement of Comprehensive Income.

#### **i) Interests in Joint Ventures**

The Company's shares of the assets, liabilities, revenue and expenses of jointly controlled operations have been included in the appropriate line items of the consolidated financial statements.

#### **j) Impairment of Assets**

Assets are tested for impairment whenever events or changes in circumstances indicate that the carrying amount exceeds its recoverable amount. An impairment loss is recognised for the amount by which the asset's carrying amount exceeds its recoverable amount. Recoverable amount is the higher of an asset's fair value less costs to sell and value in use. For the purposes of assessing impairment, assets are grouped at the lowest levels for which there are separately identifiable cash inflows that are largely independent of the cash inflows from other assets or groups of assets (cash-generating units). Non-financial assets other than goodwill that suffered an impairment are tested for possible reversal of the impairment whenever events or changes in circumstances indicate that the impairment may have reversed.

#### **k) Trade and other Payables**

Trade and other payables are carried at amortised cost; due to their short-term nature they are not discounted. They represent liabilities for goods and services provided to the Company prior to the end of the financial year that are unpaid and arise when the Company becomes obliged to make future payments in respect of the purchase of these goods and services. The amounts are unsecured and are usually paid within 30 days of recognition.

#### **l) Provisions and Employee Leave Benefits**

Provisions are recognised when the Company has a present obligation (legal or constructive) as a result of a past event, it is probable that an outflow of resources embodying economic benefits will be required to settle the obligation and a reliable estimate can be made of the amount of the obligation.

When the Company expects some or all of the provision to be reimbursed, for example under an insurance contract, the reimbursement is recognised as a separate asset but only when the reimbursement is virtually certain. The expense relating to any provision is presented in the Statement of Comprehensive Income net of any reimbursement.

Provisions are measured at the present value of management's best estimate of the expenditure required to settle the present obligation at the balance sheet date. If the effect of the time value of money is material, provisions are discounted using a current pre-tax rate that reflects the time value of money and the risks specific to the liability. The increase in the provision resulting from the passage of time is recognised in finance costs.

# Great Western Exploration Limited

ABN 53 123 631 470

## NOTES TO THE CONSOLIDATED FINANCIAL STATEMENTS FOR THE YEAR ENDED 30 JUNE 2023

### NOTE 1. BASIS OF PREPARATION (continued)

#### *Employee Leave Benefits*

##### *(i) Wages, salaries, annual leave and sick leave*

Liabilities for wages and salaries, including non-monetary benefits, annual leave and accumulating sick leave expected to be settled within 12 months of the reporting date are recognised in respect of employees' services up to the reporting date. They are measured at the amounts expected to be paid when the liabilities are settled. Expenses for non-accumulating sick leave are recognised when the leave is taken and are measured at the rates paid or payable.

##### *(ii) Long service leave*

The liability for long service leave is recognised and measured as the present level of expected future payments to be made in respect of services provided by employees up to the reporting date using the projected unit credit method. Consideration is given to expected future wage and salary levels, experience of employee departures, and periods of service. Expected future payments are discounted using market yields at the reporting date on national government bonds with terms to maturity and currencies that match, as closely as possible, the estimated future cash outflows.

#### **m) Share Based Payment Transactions**

##### *(i) Equity settled transaction:*

The Company provides benefits to its employees (including key management personnel) in the form of share-based payments, whereby employees render services in exchange for shares or rights over shares (equity-settled transactions).

The Company has in place the Great Western Exploration Limited Employee Share Option Plan to provide benefits to directors and senior executives.

The cost of these equity-settled transactions with employees is measured by reference to the fair value of the equity instruments at the date at which they are granted. The fair value is determined by an external valuer using a binomial model.

In valuing equity-settled transactions, no account is taken of any vesting conditions other than conditions linked to price of the shares of the Company (market conditions) if applicable.

The cost of equity-settled transactions is recognised, together with a corresponding increase in equity, over the period in which the performance and/or service conditions are fulfilled (the vesting period), ending on the date on which the relevant employees become fully entitled to the award (the vesting date).

At each subsequent reporting date until vesting the cumulative charge to the Statement of Comprehensive Income is the produce of:

- (i) the grant date fair value of the award;
- (ii) the current best estimate of the number of awards that will vest, taking into account such factors as the likelihood of employee turnover during the vesting period and the likelihood of non-market performance conditions being met; and
- (iii) the expired portion of the vesting period.

The charge to the Statement of Comprehensive Income for the year is the cumulative amount as calculated above less the amounts already charged in previous years. There is a corresponding credit to equity.

Until an award has vested, any amounts recorded are contingent and will be adjusted if more or fewer awards vest than were originally anticipated to do so. Any award subject to a market condition is considered to vest irrespective of whether or not that market condition is fulfilled, provided that all other conditions are satisfied.



# Great Western Exploration Limited

ABN 53 123 631 470

## NOTES TO THE CONSOLIDATED FINANCIAL STATEMENTS FOR THE YEAR ENDED 30 JUNE 2023

### NOTE 1. BASIS OF PREPARATION (continued)

If the terms of an equity-settled award are modified, as a minimum an expense is recognised as if the terms had not been modified. An additional expense is recognised for any modification that increases the total fair value of the share-based payment arrangement, or is otherwise beneficial to the employee, as measured at the date of modification.

If an equity-settled award is cancelled, it is treated as if it had vested on the date of cancellation, and any expense not yet recognised for the award is recognised immediately. However, if a new award is substituted for the cancelled award and designated as a replacement award on the date that it is granted, the cancelled and new award are treated as if they were a modification of the original award, as described in the previous paragraph.

The dilutive effect, if any, of outstanding options is reflected as additional share dilution in the computation of diluted earnings per share.

#### n) Issued Capital

Ordinary shares are classified as equity. Incremental costs directly attributable to the issue of new shares or options are shown in equity as a deduction, net of tax, from the proceeds.

#### o) Revenue Recognition

Revenue is recognised and measured at the fair value of the consideration received or receivable to the extent it is probable that the economic benefits will flow to the Company and the revenue can be reliably measured. The following specific recognition criteria must also be met before revenue is recognised.

##### (i) Interest Income

Revenue is recognised as interest accrues using the effective interest method. This is a method of calculating the amortised cost of a financial asset and allocating the interest income over the relevant year using the effective interest rate, which is the rate that exactly discounts estimated future cash receipts through the expected life of the financial asset to the net carrying amount of the financial asset.

#### p) Income Tax and other Taxes

Current tax assets and liabilities for the current and prior years are measured at the amount expected to be recovered from or paid to the taxation authorities based on the current year's taxable income. The tax rates and tax laws used to compute the amount are those that are enacted or substantively enacted by the balance sheet date.

Deferred income tax is provided on all temporary differences at the balance sheet date between the tax bases of assets and liabilities and their carrying amounts for financial reporting purposes.

Deferred income tax liabilities are recognised for all taxable temporary differences except:

- When the deferred income tax liability arises from the initial recognition of goodwill or of an asset or liability in the transaction that is not a business combination and that, at the time of the transaction, affects neither the accounting profit nor taxable profit or loss; or
- when the taxable temporary difference is associated with investments in subsidiaries, associates or interests in joint ventures, and the timing of the reversal of the temporary difference can be controlled and it is probable that the temporary difference will not reverse in the foreseeable future.

# Great Western Exploration Limited

ABN 53 123 631 470

## NOTES TO THE CONSOLIDATED FINANCIAL STATEMENTS FOR THE YEAR ENDED 30 JUNE 2023

### NOTE 1. BASIS OF PREPARATION (continued)

Deferred income tax assets are recognised for all deductible temporary differences, carry-forward of unused tax credits and unused tax losses, to the extent that it is probable that taxable profit will be available against which the deductible temporary differences and the carry-forward of unused tax credits and unused tax losses can be utilised, except:

- when the deferred income tax asset relating to the deductible temporary difference arises from the initial recognition of an asset or liability in a transaction that is not
- a business combination and, at the time of the transaction, affects neither the accounting profit nor taxable profit or loss; or
- when the deductible temporary difference is associated with investments in subsidiaries, associates or interests in joint ventures, in which case a deferred tax asset is only recognised to the extent that it is probable that the temporary difference will reverse in the foreseeable future and taxable profit will be available against which the temporary difference can be utilised.

The carrying amount of deferred income tax assets is reviewed at each balance sheet date and reduced to the extent that it is no longer probable that sufficient taxable profit will be available to allow all or part of the deferred income tax asset to be utilised.

Unrecognised deferred income tax assets are reassessed at each balance sheet date and are recognised to the extent that it has become probable that future taxable profit will allow the deferred tax asset to be recovered. Deferred income tax assets and liabilities are measured at the tax rates that are expected to apply to the year when the asset is realised or the liability is settled, based on tax rates (and tax laws) that have been enacted or substantively enacted at the balance sheet date.

Deferred tax assets and deferred tax liabilities are offset only if a legally enforceable right exists to set off current tax assets against current tax liabilities and the deferred tax assets and liabilities relate to the same taxable entity and the same taxation authority.

#### *Other Taxes*

Revenues, expenses and assets are recognised net of the amount of GST except:

- when the GST incurred on a purchase of goods and services is not recoverable from the taxation authority, in which case the GST is recognised as part of the cost of acquisition of the asset or as part of the expense item as applicable; and
- receivables and payables, which are stated with the amount of GST included.

The net amount of GST recoverable from, or payable to, the taxation authority is included as part of receivables or payables in the Statement of Financial Position.

Cash flows are included in the Statement of Cash Flows on a gross basis and the GST component of cash flows arising from investing and financing activities, which is recoverable from, or payable to, the taxation authority is classified as part of operating cash flows.

Commitments and contingencies are disclosed net of the amount of GST recoverable from, or payable to, the taxation authority.

#### **q) Earnings per share**

Basic earnings per share is calculated as net profit attributable to members of the parent, adjusted to exclude any costs of servicing equity (other than dividends), divided by the weighted average number of ordinary shares, adjusted for any bonus element.

# Great Western Exploration Limited

ABN 53 123 631 470

## NOTES TO THE CONSOLIDATED FINANCIAL STATEMENTS FOR THE YEAR ENDED 30 JUNE 2023

### NOTE 1. BASIS OF PREPARATION (continued)

Diluted earnings per share is calculated as net profit attributable to members of the parent, adjusted for:

- costs of servicing equity (other than dividends);
- the after tax effect of dividends and interest associated with dilutive potential ordinary shares; and
- other non-discretionary changes in revenues or expenses during the year that would result from the dilution of potential ordinary shares;

Divided by the weighted average number of ordinary shares and dilutive potential ordinary shares, adjusted for any bonus element.

#### r) Fair Value of Assets and Liabilities

The Company measures some of its assets and liabilities at fair value on either a recurring or non-recurring basis, depending on the requirements of the applicable Accounting Standard.

Fair value is the price the Company would receive to sell an asset or would have to pay to transfer a liability in an orderly (i.e. unforced) transaction between independent, knowledgeable and willing market participants at the measurement date.

As fair value is a market-based measure, the closest equivalent observable market pricing information is used to determine fair value. Adjustments to market values may be made having regard to the characteristics of the specific asset or liability. The fair values of assets and liabilities that are not traded in an active market are determined using one or more valuation techniques. These valuation techniques maximise, to the extent possible, the use of observable market data.

To the extent possible, market information is extracted from either the principal market for the asset or liability (i.e. the market with the greatest volume and level of activity for the asset or liability) or, in the absence of such a market, the most advantageous market available to the entity at the end of the reporting period (i.e. the market that maximises the receipts from the sale of the asset or minimises the payments made to transfer the liability, after taking into account transaction costs and transport costs).

For non-financial assets, the fair value measurement also takes into account a market participant's ability to use the asset in its highest and best use or to sell it to another market participant that would use the asset in its highest and best use.

The fair value of liabilities and the entity's own equity instruments (excluding those related to share-based payment arrangements) may be valued, where there is no observable market price in relation to the transfer of such financial instruments, by reference to observable market information where such instruments are held as assets. Where this information is not available, other valuation techniques are adopted and, where significant, are detailed in the respective note to the financial statements.

#### Valuation techniques

In the absence of an active market for an identical asset or liability, the Company selects and uses one or more valuation techniques to measure the fair value of the asset or liability. The Company selects a valuation technique that is appropriate in the circumstances and for which sufficient data is available to measure fair value. The availability of sufficient and relevant data primarily depends on the specific characteristics of the asset or liability being measured. The valuation techniques selected by the Company are consistent with one or more of the following valuation approaches:

# Great Western Exploration Limited

ABN 53 123 631 470

## NOTES TO THE CONSOLIDATED FINANCIAL STATEMENTS FOR THE YEAR ENDED 30 JUNE 2023

### NOTE 1. BASIS OF PREPARATION (continued)

Market approach: valuation techniques that use prices and other relevant information generated by market transactions for identical or similar assets or liabilities.

Income approach: valuation techniques that convert estimated future cash flows or income and expenses into a single discounted present value.

Cost approach: valuation techniques that reflect the current replacement cost of an asset at its current service capacity.

Each valuation technique requires inputs that reflect the assumptions that buyers and sellers would use when pricing the asset or liability, including assumptions about risks. When selecting a valuation technique, the Company gives priority to those techniques that maximise the use of observable inputs and minimise the use of unobservable inputs. Inputs that are developed using market data (such as publicly available information on actual transactions) and reflect the assumptions that buyers and sellers would generally use when pricing the asset or liability are considered observable, whereas inputs for which market data is not available and therefore are developed using the best information available about such assumptions are considered unobservable.

#### ***Fair value hierarchy***

AASB 13 requires the disclosure of fair value information by level of the fair value hierarchy, which categorises fair value measurements into one of three possible levels based on the lowest level that an input that is significant to the measurement can be categorised into as follows:

##### *Level 1*

Measurements based on quoted prices (unadjusted) in active markets for identical assets or liabilities that the entity can access at the measurement date.

Measurements based on inputs other than quoted prices included in Level 1 that are observable for the asset or liability, either directly or indirectly.

##### *Level 2*

Measurements based on inputs other than quoted prices included in Level 1 that are observable for the asset or liability, either directly or indirectly

##### *Level 3*

Measurements based on unobservable inputs for the asset or liability.

The fair values of assets and liabilities that are not traded in an active market are determined using one or more valuation techniques. These valuation techniques maximise, to the extent possible, the use of observable market data. If all significant inputs required to measure fair value are observable, the asset or liability is included in Level 2. If one or more significant inputs are not based on observable market data, the asset or liability is included in Level 3.

The Company would change the categorisation within the fair value hierarchy only in the following circumstances:

- (i) if a market that was previously considered active (Level 1) became inactive (Level 2 or Level 3) or vice versa; or
- (ii) if significant inputs that were previously unobservable (Level 3) became observable (Level 2) or vice versa.

When a change in the categorisation occurs, the Company recognises transfers between levels of the fair value hierarchy (i.e. transfers into and out of each level of the fair value hierarchy) on the date the event or change in circumstances occurred.

# Great Western Exploration Limited

ABN 53 123 631 470

## NOTES TO THE CONSOLIDATED FINANCIAL STATEMENTS FOR THE YEAR ENDED 30 JUNE 2023

### NOTE 2. CRITICAL ACCOUNTING ESTIMATES AND JUDGMENTS

Estimates and assumptions are continually evaluated and are based on historical experience and other factors, including expectations of future events that are believed to be reasonable under the circumstances. Equally, the Company continually employs judgement in the application of its accounting policies.

Management has identified the following critical accounting policies for which significant judgements, estimates and assumptions are made. Actual results may differ from these estimates under different assumptions and conditions. Those which may materially affect the carrying amounts of assets and liabilities reported in future years are discussed below.

#### (a) Significant accounting estimates and judgements

##### (i) Impairment of non-financial assets

The Company assesses impairment on all assets at each reporting date by evaluating conditions specific to the Company and to the particular asset that may lead to impairment. These include technology and economic environments. If an impairment trigger exists, the recoverable amount of the asset is determined. This involves value-in-use calculations, which incorporate a number of key estimates and assumptions.

##### (ii) Share-based payment transactions

The Company measures the cost of equity settled transactions with directors and employees by reference to the fair value of the equity instruments at the date at which they are granted. Equity settled transactions comprise only options. Their fair value is determined using the Binomial Options Pricing model. The accounting estimates and assumptions relating to equity settled share-based payments would have no impact on the carrying amounts of assets and liabilities within the next annual reporting year but may impact expenses and equity.

##### (iii) Estimation of useful lives of assets

The estimation of useful lives of assets has been based on historical experience. Adjustments to useful lives are made when considered necessary. Depreciation and amortisation charges as well as estimated useful lives are included in Note 1(g).

##### (iv) Exploration and evaluation costs

Acquisition, exploration and evaluation expenditure incurred is accumulated in respect of each identifiable area of interest. These costs are carried forward in respect of an area that has not at balance sheet date reached a stage which permits a reasonable assessment of the existence or otherwise of economically recoverable reserves, and active and significant operations in or relating to, the area of interest are continuing.

##### (v) Environmental issues

Balances disclosed in the financial statements and notes thereto are not adjusted for any pending or enacted environmental legislation, and the Directors understanding thereof. At the current stage of the Company's development and its current environmental impact, the Directors believe such treatment is reasonable and appropriate.

##### (vi) Taxation

Balances disclosed in the financial statements and the notes thereto, related to taxation, and are based on the best estimates of Directors. These estimates take into account both the financial performance and position of the Company as they pertain to current income taxation legislation, and the Directors understanding thereof. No adjustment has been made for pending or future taxation legislation. The current income tax position represents that Directors best estimate, pending an assessment by the Australian Taxation Office.

The Company's financial instruments consist mainly of deposits with banks, accounts receivable and payable.

For personal use only

# Great Western Exploration Limited

ABN 53 123 631 470

## NOTES TO THE CONSOLIDATED FINANCIAL STATEMENTS FOR THE YEAR ENDED 30 JUNE 2023

### NOTE 3. FINANCIAL RISK MANAGEMENT OBJECTIVES AND POLICIES

The totals for each category of financial instruments, measured in accordance with AASB 139 as detailed in the accounting policies to these financial statements, are as follows:

	Note	30.06.2023 \$	30.06.2022 \$
<b>Financial Assets</b>			
Cash and cash equivalents	7	3,021,416	4,624,561
Receivables	8	446,178	400,498
Financial assets	9	400	400
		<u>3,467,994</u>	<u>5,025,459</u>
<b>Financial Liabilities</b>			
Trade and payables	12	302,390	424,637
		<u>302,390</u>	<u>424,637</u>

### Financial Risk Management Policies

The Company attempts to mitigate risks that may affect its future performance through a systematic process of identifying, assessing, reporting and managing risks of corporate significance.

The management and the Board discuss the principal risks of our businesses, particularly during the strategic planning and budgeting processes. The board sets policies for the implementation of systems to manage and monitor identifiable risks. The Board Risk Committee is responsible for the oversight of risk management.

The Company's principal financial instruments comprise cash and short-term deposits. The Company has various other financial assets and liabilities such as trade receivables and trade payables, which arise directly from its operations.

The main purpose of these financial assets and liabilities is to raise finance for the Company's operations. It is, and has been throughout the entire year under review, the Company's policy that no trading in financial instruments shall be undertaken.

The main risks arising from the Group's financial instruments are cash flow interest rate risk. Other minor risks are either summarised below or disclosed in Note 8 in the case of credit risk and Note 13 in the case of capital risk management. The Board reviews and agrees policies for managing each of these risks.

#### (a) Credit Risk

The Company minimises credit risk by undertaking a review of its potential customers' financial position and the viability of the underlying project prior to entering into material contracts.

Financial instruments other than receivables that potentially subject the Company to concentrations of credit risk consist principally of cash deposits. The Company places its cash deposits with high credit-quality financial institutions, being in Australia only the major Australian (big four) banks. The Company's cash deposits all mature within twelve months and attract a rate of interest at normal short-term money market rates.

The maximum amount of credit risk the Company considers it would be exposed to would be \$3,021,416 (2022: \$4,624,561) being the total of its cash and cash equivalents and financial assets.

# Great Western Exploration Limited

ABN 53 123 631 470

## NOTES TO THE CONSOLIDATED FINANCIAL STATEMENTS FOR THE YEAR ENDED 30 JUNE 2023

### NOTE 3. FINANCIAL RISK MANAGEMENT OBJECTIVES AND POLICIES (continued)

#### (b) Cash Flow Interest Rate Risk

The Company's exposure to the risks of changes in market interest rates relates primarily to the Company's short-term deposits with a floating interest rate. All other financial assets and liabilities in the form of receivables and payables are non-interest bearing. The Company does not engage in any hedging or derivative transactions to manage interest rate risk.

The following table sets out the Company's exposure to interest rate risk and the effective weighted average interest rate for each class of these financial instruments.

		Floating Interest Rate		Non-Interest Bearing		Total Carrying Amount	
	Note	2023	2022	2023	2022	2023	2022
		\$	\$	\$	\$		
Financial Assets							
Cash and cash equivalents	7	3,010,094	1,307,385	11,322	3,317,176	3,021,416	4,624,561
Trade and other Receivables	8	-	-	446,178	400,498	446,178	400,498
Other Financial assets	9	-	-	400	400	400	400
Weighted average interest rate		1.15	0.01				

The effect on profit and equity, after tax, if interest rates at that date had been 10% higher or 10% lower with all other variables held constant as a sensitivity analysis would be a +/- change to profit and equity of nil (2022: nil).

A sensitivity of 10% has been selected as this is considered by management to be reasonable in the current environment. The Company constantly analyses its interest rate exposure to ensure the appropriate mix of fixed and variable rates.

The Company has not entered into any hedging activities to cover interest rate risk. In regard to its interest rate risk, the Company continuously analyses its exposure. Within this analysis consideration is given to potential renewals of existing positions, alternative investments and the mix of fixed and variable interest rates.

#### (c) Price Risk

The Company is not exposed to equity securities price risk. There is no active market for available for sale investments.

#### (d) Liquidity Risk

The Company's objective is to match the terms of its funding sources to the terms of the assets or operations being financed. The Company uses a combination of trade payables and operating leases to provide its necessary debt funding.

# Great Western Exploration Limited

ABN 53 123 631 470

## NOTES TO THE CONSOLIDATED FINANCIAL STATEMENTS FOR THE YEAR ENDED 30 JUNE 2023

### NOTE 3. FINANCIAL RISK MANAGEMENT OBJECTIVES AND POLICIES (continued)

The Company aims to hold sufficient reserves of cash or cash equivalents to help manage the fluctuations in working capital requirements and provide the flexibility for investment into long-term assets without the need to raise debt.

#### Contracted maturities of payables at balance date

	30.06.2023	30.06.2022
	\$	\$
Payable		
- Less than 6 months	302,390	424,637
- 6 to 12 months	-	-
- 1 to 5 years	-	-
	<u>302,390</u>	<u>424,637</u>

(e) Commodity Price Risk

Due to the early stage of the Company's operations its exposure is considered minimal. Risk arises as its operations are involved in exploration and development of mineral commodities, changes in the price of commodities for which the Group is exploring and developing may result in changes to the Company's market price. The Company entity does not hedge any of its exposures.

(f) Foreign currency exchange rate

A risk arises when future commercial transactions and recognised assets and liabilities are denominated in a currency other than the Company's functional currency. At present, the Company is not considered to be exposed to any significant foreign currency risk.

(g) Net fair values

The Company has no financial assets or liabilities where the carrying value amount exceeds fair value at balance date. The directors consider that the carrying amounts of financial assets and financial liabilities recognised in the consolidated financial statements approximate their fair value.

The Company's financial assets at fair value through profit or loss are listed investments (Note 9) and are categorised as Level 1, meaning fair value is determined from quoted prices in active markets for identical assets.



# Great Western Exploration Limited

ABN 53 123 631 470

## NOTES TO THE CONSOLIDATED FINANCIAL STATEMENTS FOR THE YEAR ENDED 30 JUNE 2023

### NOTE 4: OPERATING SEGMENTS

#### Segment Information

##### Identification of reportable segments

The Group has identified its operating segments based on the internal reports that are reviewed and used by the Board of Directors (chief operating decision makers) in assessing performance and determining the allocation of resources.

The Group's principal activities are mineral exploration. Reportable segments disclosed are based on aggregating operating segments where the segments are considered to have similar economic characteristics.

##### Types of products and services by segment

The Group's exploration projects consist of:

- Mineral exploration
- Finance and administration

##### Basis of accounting for purposes of reporting by operating segments

Unless stated otherwise, all amounts reported to the Board of Directors as the chief decision maker with respect to operating segments are determined in accordance with accounting policies that are consistent to those adopted in the annual financial statements of the Group.

##### Segment assets

Segment assets are clearly identifiable on the basis of their nature and physical location.

Unless indicated otherwise in the segment assets note, investments in financial assets, deferred tax assets and intangible assets have not been allocated to operating segments.

##### Segment liabilities

Liabilities are allocated to segments where there is direct nexus between the incurrence of the liability and the operations of the segment. Segment liabilities include trade and other payables and certain direct borrowings.

##### Unallocated items

Items of revenue, expense, assets and liabilities are not allocated to operating segments if they are not considered part of the core operations of any segment.

# Great Western Exploration Limited

ABN 53 123 631 470

## NOTES TO THE CONSOLIDATED FINANCIAL STATEMENTS FOR THE YEAR ENDED 30 JUNE 2023

### NOTE 4: OPERATING SEGMENTS (Continued)

#### (i) Segment performance

<b>30.06.2023</b>	<b>Mineral Exploration (\$)</b>	<b>Finance and Administration (\$)</b>	<b>Total (\$)</b>
Interest received	-	30,027	30,027
Other income – Government Grant	-	-	-
Other income	-	-	-
Total segment revenue	-	30,027	30,027
Employee benefit expense	-	(189,737)	(189,737)
Administration expenses	-	(536,358)	(536,358)
Depreciation	-	(13,695)	(13,695)
Compliance and regulatory expenses	-	(61,058)	(61,058)
Share based payments	-	(200,906)	(200,906)
Mineral exploration written-off	(4,890,259)	-	(4,890,259)
Net profit/ (loss) before tax from operations	(4,890,259)	(971,727)	(5,861,986)

<b>30.06.2022</b>	<b>Mineral Exploration (\$)</b>	<b>Finance and Administration (\$)</b>	<b>Total (\$)</b>
Interest received	-	592	592
Other income – Government Grant	-	-	-
Other income	-	-	-
Total segment revenue	-	592	592
Employee benefit expense	-	(274,592)	(274,592)
Administration expenses	-	(336,147)	(336,147)
Depreciation	-	(10,150)	(10,150)
Compliance and regulatory expenses	-	(63,009)	(63,009)
Share based payments	-	97,634	97,634
Mineral exploration written-off	(12,832)	-	(12,832)
Net profit/ (loss) before tax from operations	(12,832)	(585,672)	(598,504)

# Great Western Exploration Limited

ABN 53 123 631 470

## NOTES TO THE CONSOLIDATED FINANCIAL STATEMENTS FOR THE YEAR ENDED 30 JUNE 2023

### NOTE 4: OPERATING SEGMENTS (Continued)

#### (ii) Segment assets

<b>30.06.2023</b>	<b>Mineral Exploration (\$)</b>	<b>Finance and Administration (\$)</b>	<b>Total (\$)</b>
<i>Current assets</i>			
Cash and cash equivalents	-	3,021,416	3,021,416
Trade and other receivables	352,303	93,875	446,178
Other	-	400	400
<i>Non-current assets</i>			
Exploration and evaluation expenditure	12,155,832	-	12,155,832
Plant & Equipment	23,595	3,081	26,676
Total assets from operations	12,531,730	3,118,772	15,650,502

<b>30.06.2022</b>	<b>Mineral Exploration (\$)</b>	<b>Finance and Administration (\$)</b>	<b>Total (\$)</b>
<i>Current assets</i>			
Cash and cash equivalents	-	4,624,561	4,624,561
Trade and other receivables	331,258	69,240	400,498
Other	-	400	400
<i>Non-current assets</i>			
Exploration and evaluation expenditure	13,719,581	-	13,719,581
Plant & Equipment	20,118	9,951	30,069
Total assets from operations	14,070,957	4,704,152	18,775,109

#### (iii) Segment liabilities

<b>30.06.2023</b>	<b>Mineral Exploration (\$)</b>	<b>Finance and Administration (\$)</b>	<b>Total (\$)</b>
<i>Current liabilities</i>			
Trade and other payables	207,111	95,279	302,390
Provisions	-	37,310	37,310
Total liabilities from operations	207,111	132,589	339,700

<b>30.06.2022</b>	<b>Mineral Exploration (\$)</b>	<b>Finance and Administration (\$)</b>	<b>Total (\$)</b>
<i>Current liabilities</i>			
Trade and other payables	329,813	94,824	424,637
Provisions	-	22,365	22,365
Total liabilities from operations	329,813	117,189	447,002

# Great Western Exploration Limited

ABN 53 123 631 470

## NOTES TO THE CONSOLIDATED FINANCIAL STATEMENTS FOR THE YEAR ENDED 30 JUNE 2023

### NOTE 5: INCOME TAX

	30.06.2023	30.06.2022
	\$	\$
a) The prima facie tax on profit/(loss) from ordinary activities before income tax is reconciled to the income tax expense as follows:		
Accounting loss before income tax	(5,861,986)	(598,504)
Income tax benefit at the statutory income tax rate of 25% (2022: 25%)	(1,465,497)	(149,626)
Expenditure not allowable for income tax purposes	1,298,226	(22,481)
Capitalised mineral exploration expenditure	(842,043)	(800,184)
Other deductible expenditure/non-assessable income	(20,000)	4,806
Capital raising costs	(41,044)	(30,733)
Under/over from prior year	-	3,953
Benefit of tax losses not brought to account as an asset	1,070,358	994,265
Income Tax expense reported in the Statement of Profit or Loss and Other Comprehensive Income	-	-
b) As at 30 June 2023, the Company has estimated tax losses of approximately \$36,055,374 (2022: \$32,158,235), which may be available to be offset against deferred tax liabilities and taxable income in future years. The availability of these losses is subject to satisfying Australian taxation legislative requirements. The deferred tax asset attributable to tax losses has not been brought to account in these financial statements as the Directors believe it is not presently appropriate to regard realisation of the future income tax benefits as probable.		
c) Deferred Tax Liability		
With regard to Mineral Exploration Expenditure of \$12,155,832 (2022: \$13,719,581) the tax liability in respect of the book value has not been brought to account as it is offset by the tax losses set out in 5(b) above.		

### NOTE 6: EARNINGS PER SHARE

	30.06.2023	30.06.2022
	\$	\$
Loss used in the calculation of basic EPS	(5,861,986)	(598,504)
Weighted average number of ordinary shares used in calculation of basic earnings per share	194,132,095	140,488,695
Basic earnings per share	(3.02)	(0.43)

# Great Western Exploration Limited

ABN 53 123 631 470

## NOTES TO THE CONSOLIDATED FINANCIAL STATEMENTS FOR THE YEAR ENDED 30 JUNE 2023

### NOTE 7: CASH AND CASH EQUIVALENTS

	30.06.2023	30.06.2022
	\$	\$
Cash at bank	3,021,416	3,317,176
Cash on deposit	-	1,307,385
	<u>3,021,416</u>	<u>4,624,561</u>

The effective interest rate on short term bank deposits on average was 1.15% (2022: 0.01%).

### NOTE 8: TRADE AND OTHER RECEIVABLES

	30.06.2023	30.06.2022
	\$	\$
Current		
Tenement applications and deposits	352,303	275,349
GST receivable	64,263	111,819
Prepayments	29,612	13,330
	<u>446,178</u>	<u>400,498</u>

#### Allowance for impairment loss

Trade and other receivables do not contain impaired assets and are not past due. It is expected that these other balances will be received when due.

#### Fair value and credit risk

Due to the short-term nature of the receivables, their carrying value is assumed to approximate their fair value. Given the nature of the receivables the Company's exposure to risk is not considered material.

### NOTE 9: OTHER ASSETS

	30.06.2023	30.06.2022
	\$	\$
Financial assets		
Other	400	400
	<u>400</u>	<u>400</u>

Changes in fair value are included in the statement of comprehensive income.

# Great Western Exploration Limited

ABN 53 123 631 470

## NOTES TO THE CONSOLIDATED FINANCIAL STATEMENTS FOR THE YEAR ENDED 30 JUNE 2023

### NOTE 10: PROPERTY, PLANT AND EQUIPMENT

	30.06.2023	30.06.2022
	\$	\$
Plant and Equipment – at cost	64,530	54,229
Less: accumulated depreciation	(37,854)	(24,160)
	<u>26,676</u>	<u>30,069</u>

Reconciliation of the carrying amount of property, plant and equipment	30.06.2023	30.06.2022
	\$	\$
Carrying amount at beginning of year	30,069	27,225
Additions	10,302	12,994
Disposals	-	-
Depreciation for the year	(13,695)	(10,150)
Carrying amount at end of financial year	<u>26,676</u>	<u>30,069</u>

### NOTE 11: MINERAL EXPLORATION EXPENDITURE

	30.06.2023	30.06.2022
	\$	\$
Balance at beginning of the year	13,719,581	10,518,845
Acquisition of tenements	-	-
Capitalised exploration expenditure	3,326,510	3,213,568
Mineral expenditure written off <sup>1</sup>	(4,890,259)	(12,832)
Balance at end of financial year	<u>12,155,832</u>	<u>13,719,581</u>

<sup>1</sup>This relates to expenditure on tenements that are no longer part of the Group's exploration strategy during the coming year, including costs (\$81,287) associated with tenement applications not yet granted. Consequently, the Group has recorded an impairment charge.

The value of the Company's interest in exploration expenditure is dependent upon:

- the continuance of the Company's rights to tenure of the areas of interest;
- the results of future exploration; and
- The recoupment of costs through successful development and exploitation of the areas of interest or, alternatively, by their sale.

# Great Western Exploration Limited

ABN 53 123 631 470

## NOTES TO THE CONSOLIDATED FINANCIAL STATEMENTS FOR THE YEAR ENDED 30 JUNE 2023

### NOTE 12: TRADE AND OTHER PAYABLES

	30.06.2023	30.06.2022
	\$	\$
Current		
Trade payables	157,249	300,370
Sundry payables and accruals	122,634	98,220
PAYG Withholding	22,507	26,047
	<u>302,390</u>	<u>424,637</u>

Due to the short-term nature of these payables, their carrying value is assumed to approximate fair value.

Trade payables are non-interest bearing and are generally settled within 30 days.

### NOTE 13: EQUITY

30.06.2023

	No. on issue	\$
<b>ISSUED CAPITAL</b>		
<b>Ordinary shares on issue</b>	<u>252,698,117</u>	<u>44,466,129</u>
	No. on issue	\$
<b>Movements in Ordinary Shares</b>		
Balance at the beginning of the year 1/7/22	179,948,117	41,432,354
Options exercised during the year	1,500,000	390,000
Issued during the year	71,250,000	2,850,000
Issue costs	-	(206,225)
Balance at year end 30/06/23	<u>252,698,117</u>	<u>44,466,129</u>
<b>Options Reserve</b>		
<b>Unlisted</b>		
Balance at the beginning of the year 1/7/22	11,700,000	1,810,650
Options exercised during the year	(1,500,000)	(390,000)
Amount recognised during the year	-	200,906
Expired or lapsed during the year	-	-
Balance at the end of the period 30/06/23	<u>10,200,000</u>	<u>1,621,556</u>
<b>Listed</b>		
Balance at the beginning of the year 1/7/22	-	-
Expired or exercised during the year	-	-
Balance at the end of the period 30/06/23	<u>-</u>	<u>-</u>

# Great Western Exploration Limited

ABN 53 123 631 470

## NOTES TO THE CONSOLIDATED FINANCIAL STATEMENTS FOR THE YEAR ENDED 30 JUNE 2023

### NOTE 13: EQUITY (Continued)

30.06.2022

	No. on issue	\$
<b>ISSUED CAPITAL</b>		
<b>Ordinary shares on issue</b>	179,948,117	41,432,354
	No. on issue	\$
<b>Movements in Ordinary Shares</b>		
Balance at the beginning of the year 1/7/21	136,198,117	38,168,373
Issued during the year	43,750,000	3,500,000
Issue costs	-	(236,019)
Balance at year end 30/06/22	179,948,117	41,432,354
<b>Options Reserve</b>		
<b>Unlisted</b>		
Balance at the beginning of the year 1/7/21	10,466,667	1,908,284
Options issued during the year	5,000,000	54,627
Expired during the year	(3,766,667)	(152,261)
Balance at the end of the period 30/06/22	11,700,000	1,810,650
<b>Listed</b>		
Balance at the beginning of the year 1/7/21	-	-
Expired or exercised during the year	-	-
Balance at the end of the period 30/06/22	-	-

The Company at 30 June 2023 has issued share capital amounting to 252,698,117 (2022: 179,948,117) ordinary shares with no par value.

Ordinary shares participate in dividends and the proceeds on winding up of the parent entity in proportion to the number of shares held.

At the shareholders' meetings each ordinary share is entitled to one vote when a poll is called, otherwise each shareholder has one vote on a show of hands.



# Great Western Exploration Limited

ABN 53 123 631 470

## NOTES TO THE CONSOLIDATED FINANCIAL STATEMENTS FOR THE YEAR ENDED 30 JUNE 2023

### NOTE 14: CASH FLOW STATEMENT RECONCILIATION

	30.06.2023	30.06.2022
	\$	\$
Reconciliation of net loss after tax to net cash flows from operations		
Loss for the year	(5,861,986)	(598,504)
Depreciation	13,695	10,150
Share based payments	200,906	(97,634)
Mineral exploration expenditure written off	4,890,259	12,832
Changes in assets and liabilities:		
(Increase)/Decrease in trade and other receivables and prepayments	(43,886)	(109,444)
Increase/(Decrease) in trade and other payables	181,970	229,744
Increase /(Decrease) in provisions	14,945	(5,965)
	<u>(604,097)</u>	<u>(558,821)</u>

### NOTE 15: RELATED PARTY DISCLOSURE

There were no related party transactions with Directors or any Director related entities during the year ended 30 June 2023 or 30 June 2022.

### NOTE 16: KEY MANAGEMENT PERSONNEL

		30.06.2023	30.06.2022
		\$	\$
(a) Remuneration for Key Management Personnel			
Short term employee benefits	16 (b)	310,000	308,457
Post-employment benefits	16 (b)	32,550	30,672
Share based payments		200,906	165,750
Entitlements lapsed <sup>(1)</sup>		-	(449,064)
		<u>543,456</u>	<u>55,815</u>

. <sup>(1)</sup> Options granted in 2020 to Mr Thomas Ridges lapsed on their terms at the date of his resignation from the Company and were relinquished.

#### (b) Reconciliation of Directors' fees

Cash component of remuneration	342,550	331,129
Portion capitalised in mineral exploration expenditure	(181,266)	(189,828)

Directors' salary included in Employee Benefits Expense	<u>161,284</u>	<u>141,301</u>
---	----------------	----------------

# Great Western Exploration Limited

ABN 53 123 631 470

## NOTES TO THE CONSOLIDATED FINANCIAL STATEMENTS FOR THE YEAR ENDED 30 JUNE 2023

### NOTE 16: KEY MANAGEMENT PERSONNEL (Continued)

	30.06.2023	30.06.2022
	\$	\$
(c) Reconciliation of Employee Benefits Expense		
Directors' salary included in employee benefits expense	161,284	141,301
Other employee benefits expense	28,453	133,291
Total Employee Benefits Expense	189,737	274,592

### NOTE 17: SHARE BASED PAYMENTS

#### (a) Recognised share based payment

The share-based payment expense recognised for employee services, consultants and tenement acquisition received during the year is shown in the table below:

	30.06.2023	30.06.2022
	\$	\$
Expense arising from equity share-based payment transactions settled via options	200,906	54,627
Lapsed equity share-based payment transactions settled during period	-	(152,261)
Total expense arising from share-based payment transactions	200,906	(97,634)

The share-based payment plans are described below. There have been no cancellations or modifications to any of the plans during 2023 and 2022.

#### b) Types of Share based payment plans

##### Great Western Exploration Limited, Employee Share Option Plan

Share options are granted to senior executives and designed to provide executives an incentive and participate along with shareholders by increasing the value of the Company's shares. The options are issued by the Board having regard, in each case to:

- (i) the contribution to the Company which has been made by the Participant;
  - (ii) the period of employment of the Participant with the Company, including (but not limited to) the years of service by that Participant;
  - (iii) the potential contribution of the Participant to the Company; and
- any other matters which the Board considers in its absolute discretion, to be relevant.

The options are issued to participants at a price the Board considers appropriate, but in any event,

# Great Western Exploration Limited

ABN 53 123 631 470

## NOTES TO THE CONSOLIDATED FINANCIAL STATEMENTS FOR THE YEAR ENDED 30 JUNE 2023

### NOTE 17: SHARE BASED PAYMENTS (Continued)

no more than nominal consideration. Details of options expiry date and exercise price are set out in Note 17 (c) below.

#### c) Summary of Options on issue

	30.06.2023		30.06.2022	
	No.	Exercise Price	No.	Exercise Price
Outstanding at beginning of financial year	11,700,000		10,466,667	
Granted during the year:				
- unlisted options expiring 20 Jun 2027	-	-	1,500,000	-
- unlisted options expiring 20 Jun 2027	-	-	1,500,000	-
- unlisted options expiring 20 Jun 2027	-	-	2,000,000	-
Lapsed during the year <sup>(1)</sup>	-	-	(3,500,000)	-
Expired during the year <sup>(2)</sup>	-	-	(266,667)	-
Exercised during the year	(1,500,000)	-	-	-
Outstanding at end of financial year	10,200,000		11,700,000	

<sup>(1)</sup>Includes unlisted options issued to Mr Thomas Ridges that lapsed on their terms on his resignation from the Company on 14<sup>th</sup> April 2022.

<sup>(2)</sup>Includes listed options that expired on 31 December 2021 and on 30 June 2021.

The following share-based payment arrangements were in existence during the current and prior reporting periods:

Grant Date	No of Options	Grant Date Fair Value	Exercise Price	Expiry Date	Vesting Date	Value recognized during the year	Value recognized in future years
<b>30.06.2023</b>							
20/06/2022	1,500,000	\$0.080	\$0.00	20/06/2027	20/06/2023	\$91,930	-
20/06/2022	1,500,000	\$0.080	\$0.00	20/06/2027	20/06/2024	\$57,675	\$48,263
20/06/2022	2,000,000	\$0.080	\$0.00	20/06/2027	20/06/2025	\$51,301	\$96,204
6/4/2021	2,750,000	\$0.0645	\$0.37	31/3/2024	6/4/2021	-	-
6/4/2021	1,250,000	\$0.0442	\$0.52	31/3/2024	6/4/2021	-	-
29/12/2020	1,200,000	\$0.0124	\$0.31	29/12/2023	29/12/2020	-	-
Total	10,200,000					\$200,906	\$144,467

# Great Western Exploration Limited

ABN 53 123 631 470

## NOTES TO THE CONSOLIDATED FINANCIAL STATEMENTS FOR THE YEAR ENDED 30 JUNE 2023

### NOTE 17: SHARE BASED PAYMENTS (Continued)

Grant Date	No of Options	Grant Date Fair Value	Exercise Price	Expiry Date	Vesting Date	Value recognized during the year	Value recognized in future years
<b>30.06.2022</b>							
12/10/2020	1,500,000	\$0.26	\$0.00	12/10/2025	12/10/2021	\$111,123	-
20/06/2022	1,500,000	\$0.080	\$0.00	20/06/2027	20/06/2023	\$28,110	\$114,390
20/06/2022	1,500,000	\$0.080	\$0.00	20/06/2027	20/06/2024	\$14,036	\$128,464
20/06/2022	2,000,000	\$0.080	\$0.00	20/06/2027	20/06/2025	\$12,482	\$177,518
6/4/2021	2,750,000	\$0.0645	\$0.37	31/3/2024	6/4/2021	-	-
6/4/2021	1,250,000	\$0.0442	\$0.52	31/3/2024	6/4/2021	-	-
29/12/2020	1,200,000	\$0.0124	\$0.31	29/12/2023	29/12/2020	-	-
Total	11,700,000					\$165,751	\$420,372

#### d) Option pricing model

#### Equity-settled transactions

The fair value of the equity-settled share options granted under the Employee Share Option Plan is estimated as at the date of the grant using a Monte Carlo Pricing Model as part of the term of the issued options, the options will vest immediately when the Share Price Equals or exceeds the Exercise Price of the respective shares after the date of issues of the options.

Binomial Model Pricing Model and Black and Scholes Model taking into account the terms and conditions upon which the options were granted options included in relation to acquisition of tenements and corporate advisory services during the period.

Binomial Model Pricing Model	
Grant Date	20/06/22
Dividend yield (%)	-
Expected volatility (%)	131.5
Risk free interest rate (%)	3.82
Expected life of options (yrs)	5.0
Option exercise price (\$)	0.00
Weighted average share price at measurement date (\$)	0.08

# Great Western Exploration Limited

ABN 53 123 631 470

## NOTES TO THE CONSOLIDATED FINANCIAL STATEMENTS FOR THE YEAR ENDED 30 JUNE 2023

### NOTE 17: SHARE BASED PAYMENTS (Continued)

Black-Scholes Model		
Grant Date	06/04/2021	29/12/20
Dividend yield (%)	-	-
Expected volatility (%)	117	117
Risk free interest rate (%)	0.08	0.08
Expected life of options (yrs)	3.0	3.0
Option exercise price (\$)	0.52	0.31
Grant Date Share Price	0.25	0.2

- e) Share issued in lieu of services

No shares were issued in lieu of services during the years ended 30 June 2023 or 30 June 2022.

For personal use only

# Great Western Exploration Limited

ABN 53 123 631 470

## NOTES TO THE CONSOLIDATED FINANCIAL STATEMENTS FOR THE YEAR ENDED 30 JUNE 2023

### NOTE 18: PARENT INFORMATION

	30.06.2023	30.06.2022
	\$	\$

The following information has been extracted from the books and records of the parent and has been prepared in accordance with Australian Accounting Standards.

#### STATEMENT OF FINANCIAL POSITION

ASSETS		
Current Assets	3,467,226	5,024,691
Non-current assets	12,177,671	13,744,814
TOTAL ASSETS	15,644,897	18,769,505
LIABILITIES		
Current liabilities	334,095	441,398
Non-current liabilities	-	-
TOTAL LIABILITIES	334,095	441,398
NET ASSETS	15,310,802	18,328,107
EQUITY		
Issued capital	44,180,963	41,147,188
Reserves	1,621,557	1,810,650
Accumulated losses	(30,491,718)	(24,629,731)
TOTAL EQUITY	15,310,802	18,328,107

#### STATEMENT OF PROFIT OR LOSS AND OTHER COMPREHENSIVE INCOME

Total loss	(5,857,364)	(598,504)
Total comprehensive income	(5,857,364)	(598,504)

#### Guarantees

Great Western Exploration Limited has not entered into any guarantees, in the current or previous financial year, in relation to the debts of its subsidiaries.

#### Contingent Liabilities

At 30 June 2023, there were certain contingent liabilities in relation to the parent entity (2022: Nil) as outlined in Note 21.

#### Contractual commitments

At 30 June 2023, Great Western Exploration Limited had not entered into any contractual commitments for the acquisition of property, plant and equipment (2022: Nil).

# Great Western Exploration Limited

ABN 53 123 631 470

## NOTES TO THE CONSOLIDATED FINANCIAL STATEMENTS FOR THE YEAR ENDED 30 JUNE 2023

### NOTE 19: CONTROLLED ENTITIES

Interests are held in the following:

Name	Principal Activity	Country of Incorporation	Shares	Ownership Interest	
				30.06.2023	30.06.2022
Vanguard Exploration Limited	Mineral Exploration	Australia	Ordinary	100%	100%
Clean Energy Metals Pty Ltd	Project Development	Australia	Ordinary	100%	Nil

### NOTE 20: COMMITMENTS

#### COMMITMENTS

	30.06.2023	30.06.2022
	\$	\$
a) Exploration Tenement Leases		
In order to maintain rights of tenure to exploration tenements currently granted, the Group is required to outlay lease rentals and to meet the minimum expenditure requirements of the Western Australian Department of Mines, Industry Regulation & Safety.		
Within one year	881,034	2,248,500

### NOTE 21: CONTINGENT ASSETS AND LIABILITIES

As at 30 June 2023, the Group has a potential exposure in relation to compensation payable under a Native Title Land Access and Mineral Exploration Agreement dated 25 September 2019 (the "Agreement") covering twenty individual tenements held by the Group in Western Australia. A claim to the value of \$300,000 has been issued under an invoice dated 30 June 2023.

The Directors obtained legal advice which concluded that the invoice issued by the Native Title group is not supported by the terms of the Agreement. Consequently, the directors are of the view that the payment schedule contained in the Agreement only applies to a limited number of tenements and will strongly dispute the assessment by the Native Title group.

As at the reporting date, there is no resolution of the contested compensation claim. There were no other contingencies at the end of financial year 2023.

# Great Western Exploration Limited

ABN 53 123 631 470

## NOTES TO THE CONSOLIDATED FINANCIAL STATEMENTS FOR THE YEAR ENDED 30 JUNE 2023

### NOTE 22: EVENTS AFTER BALANCE DATE

The Directors are not aware of any matter or circumstance that has arisen since 30 June 2023 which has significantly affected or may significantly affect the operations of the Group, the results of those operations, or the state of affairs of the Group, in future financial years, other than:

- On 17 August 2023 the Company announced that it had been advised by Sandfire Resources (Sandfire) that it was withdrawing from the Yerrida North Joint Venture (JV). Sandfire spent ~\$4.5M on exploration within the Yerrida North JV since the commencement of the joint venture in 2017, acquiring and compiling a comprehensive geological data package for future exploration, which will now revert to Great Western.
- On 1 August 2023 the Company announced RC drilling has been completed at the Firebird Gold Project, with 1,700m drilled. Assay results from this drilling are pending.

### NOTE 23: AUDITORS' REMUNERATION

	30.06.2023	30.06.2022
	\$	\$
The Auditor of Great Western Exploration Limited is Hall Chadwick WA Audit Pty Ltd.		
Amounts received or due and receivable for		
• an audit or review of the financial report of the Group	42,907	39,321
• other services in relation to the Group – other services	-	-
	<hr/>	<hr/>
	42,907	39,321
	<hr/>	<hr/>



# GREAT WESTERN EXPLORATION LIMITED


ABN 53 123 631 470

## Directors' Declaration

In accordance with a resolution of the directors of Great Western Exploration Limited, the Directors of the Company declare that:

1. the financial statements and notes, as set out on pages 34 to 69, are in accordance with the Corporations Act 2001 and:
  - a. comply with Australian Accounting Standards, which, as stated in accounting policy Note 1 to the financial statements, constitutes compliance with International Financial Reporting Standards (IFRS); and
  - b. give a true and fair view of the financial position as at 30 June 2023 and of the performance for the year ended on that date of the Company;
2. in the Directors' opinion, subject to the matters mentioned in Note 1(a) to the financial statements, there are reasonable grounds to believe that the Company will be able to pay its debts as and when they become due and payable; and
3. the Directors have been given the declarations required by s 295A of the Corporations Act 2001 for the financial year ended 30 June 2023.

Dated this 14<sup>th</sup> day of September 2023



Shane Pike  
Managing Director

For personal use only

To the Board of Directors,

## Auditor's Independence Declaration under Section 307C of the Corporations Act 2001

As lead audit Director for the audit of the financial statements of Great Western Exploration Limited for the financial year ended 30 June 2023, I declare that to the best of my knowledge and belief, there have been no contraventions of:

- the auditor independence requirements of the *Corporations Act 2001* in relation to the audit; and
- any applicable code of professional conduct in relation to the audit.

Yours Faithfully

*Hall Chadwick*  
HALL CHADWICK WA AUDIT PTY LTD

*Mark Delaurentis*  
MARK DELAURENTIS CA  
Director

Dated Perth, Western Australia this 14<sup>th</sup> day of September 2023

For personal use only

## INDEPENDENT AUDITOR'S REPORT TO THE MEMBERS OF GREAT WESTERN EXPLORATION LIMITED

### Report on the Audit of the Financial Report

#### Opinion

We have audited the financial report of Great Western Exploration Limited ("the Company") and its subsidiaries ("the Consolidated Entity"), which comprises the consolidated statement of financial position as at 30 June 2023, the consolidated statement of profit or loss and other comprehensive income, the consolidated statement of changes in equity and the consolidated statement of cash flows for the year then ended, and notes to the financial statements, including a summary of significant accounting policies, and the directors' declaration.

In our opinion:

- a. the accompanying financial report of the Consolidated Entity is in accordance with the Corporations Act 2001, including:
  - (i) giving a true and fair view of the Consolidated Entity's financial position as at 30 June 2023 and of its financial performance for the year then ended; and
  - (ii) complying with Australian Accounting Standards and the Corporations Regulations 2001.
- b. the financial report also complies with International Financial Reporting Standards as disclosed in Note 1.

#### Basis for Opinion

We conducted our audit in accordance with Australian Auditing Standards. Our responsibilities under those standards are further described in the *Auditor's Responsibilities for the Audit of the Financial Report* section of our report. We are independent of the Consolidated Entity in accordance with the auditor independence requirements of the *Corporations Act 2001* and the ethical requirements of the Accounting Professional and Ethical Standards Board's *APES 110 Code of Ethics for Professional Accountants* (the Code) that are relevant to our audit of the financial report in Australia. We have also fulfilled our other ethical responsibilities in accordance with the Code.

We believe that the audit evidence we have obtained is sufficient and appropriate to provide a basis for our opinion.

For personal use only

## Key Audit Matters

Key audit matters are those matters that, in our professional judgement, were of most significance in our audit of the financial report of the current period. These matters were addressed in the context of our audit of the financial report as a whole, and in forming our opinion thereon, and we do not provide a separate opinion on these matters.

Key Audit Matter	How our audit addressed the Key Audit Matter
<p>As disclosed in note 11 to the financial statements, during the year ended 30 June 2023 the Company capitalised exploration and evaluation expenditure was carried at \$12,155,832 with an impairment expense of \$4,890,259.</p> <p>Mineral exploration expenditure is a focus area due to:</p> <ul style="list-style-type: none"> <li>The significance of the balance to the Consolidated Entity's financial position;</li> <li>The level of judgement required in evaluating management's application of the requirements of AASB 6 <i>Exploration for and Evaluation of Mineral Resources</i> ("AASB 6"). AASB 6 is an industry specific accounting standard requiring the application of significant judgements, estimates and industry knowledge. This includes specific requirements for expenditure to be capitalised as an asset and subsequent requirements which must be complied with for capitalised expenditure to continue to be carried as an asset; and</li> <li>The assessment of impairment of mineral exploration expenditure being inherently difficult.</li> </ul>	<p>Our review procedures included but were not limited to:</p> <ul style="list-style-type: none"> <li>Assessing management's determination of its areas of interest for consistency with the definition in AASB 6 <i>Exploration and Evaluation of Mineral Resources</i> ("AASB 6");</li> <li>Assessing the Consolidated Entity's rights to tenure for a sample of tenements;</li> <li>By reviewing the status of the Consolidated Entity's tenure and planned future activities, reading board minutes and discussions with management we assessed each area of interest for one or more of the following circumstances that may indicate impairment of the mineral exploration expenditure: <ul style="list-style-type: none"> <li>The licenses for the rights to explore expiring in the near future or are not expected to be renewed;</li> <li>Substantive expenditure for further exploration in the area of interest is not budgeted or planned;</li> <li>Decision or intent by the Consolidated Entity to discontinue activities in the specific area of interest due to lack of commercially viable quantities of resources; and</li> <li>Data indicating that, although a development in the specific area is likely to proceed, the carrying amount of the exploration asset is unlikely to be recorded in full from successful development or sale; and</li> </ul> </li> <li>We also assessed the appropriateness of the related disclosures in note 11 to the financial statements.</li> </ul>

For personal use only

## Other Information

The directors are responsible for the other information. The other information comprises the information included in the Consolidated Entity's annual report for the year ended 30 June 2023, but does not include the financial report and our auditor's report thereon.

Our opinion on the financial report does not cover the other information and accordingly we do not express any form of assurance conclusion thereon.

In connection with our audit of the financial report, our responsibility is to read the other information and, in doing so, consider whether the other information is materially inconsistent with the financial report or our knowledge obtained in the audit or otherwise appears to be materially misstated.

If, based on the work we have performed, we conclude that there is a material misstatement of this other information, we are required to report that fact. We have nothing to report in this regard.

## Responsibilities of the Directors for the Financial Report

The directors of the Company are responsible for the preparation of the financial report that gives a true and fair view in accordance with Australian Accounting Standards and the Corporations Act 2001 and for such internal control as the directors determine is necessary to enable the preparation of the financial report that gives a true and fair view and is free from material misstatement, whether due to fraud or error. In Note 1, the directors also state in accordance with Australian Accounting Standard *AASB 101 Presentation of Financial Statements*, that the financial report complies with International Financial Reporting Standards.

In preparing the financial report, the directors are responsible for assessing the Consolidated Entity's ability to continue as a going concern, disclosing, as applicable, matters related to going concern and using the going concern basis of accounting unless the directors either intend to liquidate the Consolidated Entity or to cease operations, or has no realistic alternative but to do so.

## Auditor's Responsibilities for the Audit of the Financial Report

Our objectives are to obtain reasonable assurance about whether the financial report as a whole is free from material misstatement, whether due to fraud or error, and to issue an auditor's report that includes our opinion. Reasonable assurance is a high level of assurance, but is not a guarantee that an audit conducted in accordance with the Australian Auditing Standards will always detect a material misstatement when it exists. Misstatements can arise from fraud or error and are considered material if, individually or in the aggregate, they could reasonably be expected to influence the economic decisions of users taken on the basis of this financial report.

As part of an audit in accordance with the Australian Auditing Standards, we exercise professional judgement and maintain professional scepticism throughout the audit. We also:

- Identify and assess the risks of material misstatement of the financial report, whether due to fraud or error, design and perform audit procedures responsive to those risks, and obtain audit evidence that is sufficient and appropriate to provide a basis for our opinion. The risk of not detecting a material misstatement resulting from fraud is higher than for one resulting from error, as fraud may involve collusion, forgery, intentional omissions, misrepresentations, or the override of internal control.
- Obtain an understanding of internal control relevant to the audit in order to design audit procedures that are appropriate in the circumstances, but not for the purpose of expressing an opinion on the effectiveness of the Consolidated Entity's internal control.
- Evaluate the appropriateness of accounting policies used and the reasonableness of accounting estimates and related disclosures made by the directors.
- Conclude on the appropriateness of the directors' use of the going concern basis of accounting and, based on the audit evidence obtained, whether a material uncertainty exists related to events or conditions that may cast significant doubt on the Consolidated Entity's ability to continue as a going concern. If we conclude that a material uncertainty exists, we are required to draw attention in our auditor's report to the related disclosures in the financial report or, if such disclosures are inadequate, to modify our opinion. Our conclusions are based on the audit evidence obtained up to the date of our auditor's report. However, future events or conditions may cause the Consolidated Entity to cease to continue as a going concern.
- Evaluate the overall presentation, structure and content of the financial report, including the disclosures, and whether the financial report represents the underlying transactions and events in a manner that achieves fair presentation.
- Obtain sufficient appropriate audit evidence regarding the financial information of the entities or business activities within the Consolidated Entity to express an opinion on the financial report. We are responsible for the direction, supervision and performance of the Consolidated Entity audit. We remain solely responsible for our audit opinion.

We communicate with the directors regarding, among other matters, the planned scope and timing of the audit and significant audit findings, including any significant deficiencies in internal control that we identify during our audit.

We also provide the directors with a statement that we have complied with relevant ethical requirements regarding independence, and to communicate with them all relationships and other matters that may reasonably be thought to bear on our independence, and where applicable, related safeguards.

From the matters communicated with the directors, we determine those matters that were of most significance in the audit of the financial report of the current period and are therefore the key audit

matters. We describe these matters in our auditor's report unless law or regulation precludes public disclosure about the matter or when, in extremely rare circumstances, we determine that a matter should not be communicated in our report because the adverse consequences of doing so would reasonably be expected to outweigh the public interest benefits of such communication.

### Report on the Remuneration Report

We have audited the Remuneration Report included in the directors' report for the year ended 30 June 2023. The directors of the Company are responsible for the preparation and presentation of the remuneration report in accordance with s 300A of the Corporations Act 2001. Our responsibility is to express an opinion on the remuneration report, based on our audit conducted in accordance with Australian Auditing Standards.

### Auditor's Opinion

In our opinion, the Remuneration Report of Great Western Exploration Limited, for the year ended 30 June 2023, complies with section 300A of the Corporations Act 2001.



HALL CHADWICK WA AUDIT PTY LTD



MARK DELAURENTIS CA  
Director

Dated in Perth, Western Australia this 14<sup>th</sup> day of September 2023

For personal use only

# GREAT WESTERN EXPLORATION LIMITED

ABN 53 123 631 470

## ADDITIONAL INFORMATION

### 1. SHAREHOLDER INFORMATION

#### 1.1 VOTING RIGHTS

Every member has one vote for every fully paid ordinary share held.

#### 1.2 SUBSTANTIAL SHAREHOLDERS AS AT 21 August 2023

<u>Shareholder</u>	<u>No of Shares</u>
Seascope Capital Pty Ltd	29,255,760
Budworth Capital Pty Ltd	29,225,500

#### 1.3 DISTRIBUTION OF HOLDERS AS AT 21 August 2023

	<b>Fully Paid Ordinary Shares</b>	<b>No. of Ordinary Shares</b>
1 – 1000	764	162,489
1001 – 5,000	271	699,900
5001 – 10,000	118	896,960
10,001 – 100,000	318	11,769,558
100,001 – and over	196	239,169,210
<b>Total number of holders</b>	<b>,667</b>	<b>252,698,117</b>

At 21 August 2023 the Company had 1,166 unmarketable parcels

#### 1.4 TOP TWENTY HOLDERS:

Ordinary Shares fully paid: The names of the twenty largest shareholders as at **21 August 2023** are as follows:

	<b>Name</b>	<b>%</b>	<b>No. of Shares</b>
1	SEASCAPE CAPITAL PTY LTD	11.58	29,255,760
2	BUDWORTH CAPITAL PTY	11.57	29,225,500
3	NINAN PTY LTD	2.90	7,325,000
4	WESTGATE CAPITAL PTY LTD	2.78	7,033,334
5	MRS J E SOMES + MS A J SOMES	2.07	5,241,120
6	PORTCULLIS HOUSE PTY LTD	1.94	4,900,000
7	MR JORDAN LUCKETT	1.68	4,239,087
8	WOMBAT SUPER INVESTMENTS PTY LTD	1.67	4,211,250
9	SIMON LEE	1.65	4,166,667
10	QUICKSILVER ASSET PTY LTD	1.62	4,086,534
11	FJ and SJ MAHER	1.48	3,750,000
12	AGILIS PTY LTD	1.39	3,500,000
13	TAZGA TWO PTY LTD	1.20	3,043,056



## GREAT WESTERN EXPLORATION LIMITED

ABN 53 123 631 470

14	SIMORE PTY LTD	1.13	2,853,749
15	GEOFF BARNES	1.05	2,650,000
16	MA BENNETT	1.05	2,650,000
17	GANDRIA CAPITAL PTY LTD	1.02	2,572,500
18	LITTLE BREAKAWAY PTY LTD	1.01	2,561,764
19	JE AND JC MOORE	0.99	2,500,000
20	HSBC CUSTODY NOMINEES (AUSTRALIA) LIMITED	0.95	2,397,065
		<b>50.72</b>	<b>128,162,386</b>

At 30 June 2023, the Company had no quoted options (GTEOA) outstanding.

### 1.5 Unlisted option holders:

Class of Unlisted Option	No. of unlisted options on issue	No of holders
Exercisable at \$0.31 and expiring 29 December 2023	1,200,000	1
Zero Exercise price expiring 12 Oct 2025 s.t. milestones	1,500,000	1
Zero Exercise price expiring 19 Apr 2027 s.t. milestones	5,000,000	1
Exercisable at \$0.37 and expiring 31 March 2024	2,750,000	4
Exercisable at \$0.52 and expiring 31 March 2024	1,250,000	3

### 1.6 Restricted Securities:

The Company has no restricted securities on issue.

**GREAT WESTERN EXPLORATION LIMITED**  
**ABN 53 123 631 470**

**2. SCHEDULE OF MINERAL TENEMENTS**

**Tenement Schedule at 30 June 2023**

Project	Tenement	Status	Holder	Ownership	Comments
Atley	E 57/1130	Live	Great Western Exploration Limited	100%	
Atley	E 57/1131	Live	Great Western Exploration Limited	100%	
Atley	E 57/1160	Live	Great Western Exploration Limited	100%	
Atley	E 57/1161	Live	Great Western Exploration Limited	100%	
Atley	E 57/1162	Live	Great Western Exploration Limited	100%	
Atley	E 57/1164	Live	Great Western Exploration Limited	100%	
Atley	E 57/1165	Live	Great Western Exploration Limited	100%	
Atley	E 57/1166	Live	Great Western Exploration Limited	100%	
Atley	E 57/1204	Live	Great Western Exploration Limited	100%	
Fairbairn	E 69/3443	Live	Vanguard Exploration Ltd	100%	100% Owned Subsidiary
Fairbairn	E 69/3810	Pending	Great Western Exploration Limited	100%	
Fairbairn	E 69/3899	Live	Great Western Exploration Limited	100%	
Fairbairn	E 69/3903	Pending	Great Western Exploration Limited	100%	
Fairbairn	E 69/3906	Live	Great Western Exploration Limited	100%	
Fairbairn	E 69/4065	Pending	Great Western Exploration Limited	100%	Reapplication of E 69/3903
Fairbairn	E 69/4150	Pending	Great Western Exploration Limited	100%	
Fairbairn	E 69/4151	Pending	Great Western Exploration Limited	100%	
Forrestania South	E 74/603	Live	Western Areas Ltd	10%	Free Carried To PFS
Firebird	E 53/2129	Live	Jindalee Resources Limited	0%	JV with Dynamic Resources Ltd, GTE Earning 80%
Golden Corridor	E 51/1855	Live	Great Western Exploration Limited	100%	
Golden Corridor	E 51/2046	Live	Great Western Exploration Limited	100%	
Golden Corridor	E51/2010	Live	Great Western Exploration Limited	90%	Westex Resources Free Carried to BFS
Golden Corridor	E 53/1983	Live	Great Western Exploration Limited	100%	
Golden Corridor	E 53/2124	Live	Great Western Exploration Limited	100%	
Golden Corridor	E 53/2138	Live	Great Western Exploration Limited	100%	
Golden Corridor	E 53/2139	Live	Great Western Exploration Limited	100%	
Golden Corridor	E 53/2141	Live	Great Western Exploration Limited	100%	

For personal use only

**GREAT WESTERN EXPLORATION LIMITED**  
**ABN 53 123 631 470**

For personal use only

Project	Tenement	Status	Holder	Ownership	Comments
Golden Corridor	E 53/2142	Live	Great Western Exploration Limited	100%	
Lake Way Potash	E 53/1949	Live	Great Western Exploration Limited	100%	
Lake Way Potash	E 53/2017	Live	Great Western Exploration Limited	100%	
Lake Way Potash	E 53/2026	Live	Great Western Exploration Limited	100%	
Lake Way Potash	E 53/2146	Live	Great Western Exploration Limited	100%	
Yandal West	E 53/1369	Live	Vanguard Exploration Ltd	100%	100% Owned Subsidiary
Yandal West	E 53/1612	Live	Diversified Asset Holdings Pty Ltd	80%	Diversified Free Carried To BFS,
Yandal West	E 53/1816	Live	Diversified Asset Holdings Pty Ltd	80%	Diversified Free Carried To BFS
Yandal West	E 53/2206	Pending	Great Western Exploration Limited	100%	Competing Application, second drawn in ballot
Copper Ridge	E 51/1727	Live	Great Western Exploration Limited	100%	
Copper Ridge	E 51/1734	Live	Great Western Exploration Limited	100%	
Copper Ridge	E 51/1856	Live	Great Western Exploration Limited	100%	
Copper Ridge	E 53/1894	Live	Great Western Exploration Limited	100%	
Copper Ridge	E53/2156	Live	Great Western Exploration Limited	100%	
Yerrida South	E 51/1732	Live	Great Western Exploration Limited	100%	
Yerrida South	E 51/1733	Live	Great Western Exploration Limited	100%	
Yerrida South	E 51/1993	Live	Great Western Exploration Limited	100	
Yerrida South	E51/2062	Live	Great Western Exploration Limited	100%	
Yerrida South	E51/2063	Live	Great Western Exploration Limited	100%	
Yerrida South	E 53/2027	Live	Great Western Exploration Limited	100%	
Yerrida South	E 53/2077	Live	Great Western Exploration Limited	100%	
Yerrida South	E 53/2196	Live	Great Western Exploration Limited	100%	
Yerrida South	E 51/2078	Live	Great Western Exploration Limited	100%	
Yerrida North	E 51/2127	Pending	Great Western Exploration Limited	100%	
Yerrida North	E 51/2128	Pending	Great Western Exploration Limited	100%	
Yerrida North	E 51/2129	Pending	Great Western Exploration Limited	100%	
Calyerup	E 70/6032	Live	Great Western Exploration Limited	100%	
Weld Spring	E 69/4021	Pending	Great Western Exploration Limited	100%	
Weld Spring	E 69/4022	Pending	Great Western Exploration Limited	100%	

**GREAT WESTERN EXPLORATION LIMITED**  
**ABN 53 123 631 470**

Project	Tenement	Status	Holder	Ownership	Comments
Weld Spring	E 69/4023	Pending	Great Western Exploration Limited	100%	
Weld Spring	E 69/4024	Pending	Great Western Exploration Limited	100%	
Weld Spring	E 69/4025	Pending	Great Western Exploration Limited	100%	
Weld Spring	E 69/4026	Pending	Great Western Exploration Limited	100%	
Weld Spring	E 69/4027	Pending	Great Western Exploration Limited	100%	
<b>Previously in a Joint Venture with Sandfire Resources Limited</b>					
Yerrida North JV	E 51/1324	Live	Great Western Exploration Limited	100%	
Yerrida North JV	E 51/1330	Live	Great Western Exploration Limited	100%	
Yerrida North JV	E 51/1560	Live	Great Western Exploration Limited	100%	
Yerrida North JV	E 51/1712	Live	Great Western Exploration Limited	100%	
Yerrida North JV	E 51/1723	Live	Great Western Exploration Limited	100%	
Yerrida North JV	E 51/1724	Live	Great Western Exploration Limited	100%	
Yerrida North JV	E 51/1728	Live	Great Western Exploration Limited	100%	
Yerrida North JV	E 51/1746	Live	Great Western Exploration Limited	100%	
Yerrida North JV	E 51/1747	Live	Great Western Exploration Limited	100%	
Yerrida North JV	E 51/1819	Live	Great Western Exploration Limited	100%	
Yerrida North JV	E 51/1827	Live	Great Western Exploration Limited	100%	
Yerrida North JV	E 51/2033	Live	Great Western Exploration Limited	100%	
Yerrida North JV	E 51/2068	Live	Great Western Exploration Limited	100%	

For personal use only