



Genetic Technologies – Investor Update

The Future: *Unlocking personalised preventative medicine*

August 9, 2023

Authorised by the Board of Directors of Genetic Technologies Limited

ASX: GTG
NASDAQ: GENE

For personal use only

Notice: Forward looking statements

The purpose of the presentation is to provide an update of the business of Genetic Technologies Limited (the Company) ACN: 009 212 328 (ASX:GTG; NASDAQ:GENE). These slides have been prepared as a presentation aid only and the information they contain may require further explanation and/or clarification. Accordingly, these slides and the information they contain should be read in conjunction with past and future announcements made by the Company and should not be relied upon as an independent source of information. Please refer to the Company's website and/or the Company's filings to the ASX and SEC for further information.

The views expressed in this presentation contain information derived from publicly available sources that have not been independently verified. No representation or warranty is made as to the accuracy, completeness or reliability of the information. Any forward looking statements in this presentation have been prepared on the basis of a number of assumptions which may prove incorrect and the current intentions, plans, expectations and beliefs about future events are subject to risks, uncertainties and other factors, many of which are outside the Company's control. Important factors that could cause actual results to differ materially from assumptions or expectations expressed or implied in this presentation include known and unknown risks. Because actual results could differ materially to assumptions made and the Company's current intentions, plans, expectations and beliefs about the future, you are urged to view all forward looking statements contained in this presentation with caution.

This presentation should not be relied on as a recommendation or forecast by the Company. Nothing in this presentation should be construed as either an offer to sell or a solicitation of an offer to buy or sell shares in any jurisdiction.

Key Messages

- Developed a clear Vision and Strategy to be leader in personalised predictive genomics
- Our journey from R&D → Commercialisation and the pathway to profitability
- Identified the Drivers of Revenue and Pathway to Profitability by the middle of FY25
- Strong momentum in commercial operations with +29% growth in customer receipts
- We have a global operation, a comprehensive human and animal health portfolio
- Engaged with leading global collaborations
- Begun our journey with a strong commitment to ESG principals
- Have a well-defined strategic plan to execute on a multi brand strategy in key regions

VISION



World leader in personalised predictive genomics
Empowering individuals to take control of their health

UNIQUE VALUE PROPOSITION

Turning cutting-edge science into personalised, predictive tests driven by AI & machine learning techniques

Backed by over 20 years of experience, our scientific and clinical teams are translating genetics and clinical information into absolute risk tests that predict risk of chronic diseases before onset

Empowering physicians to improve health outcomes for people around the world enabling a new era of personalised medicine.



World leading portfolio

Most comprehensive guideline driven portfolio for human and animal health.

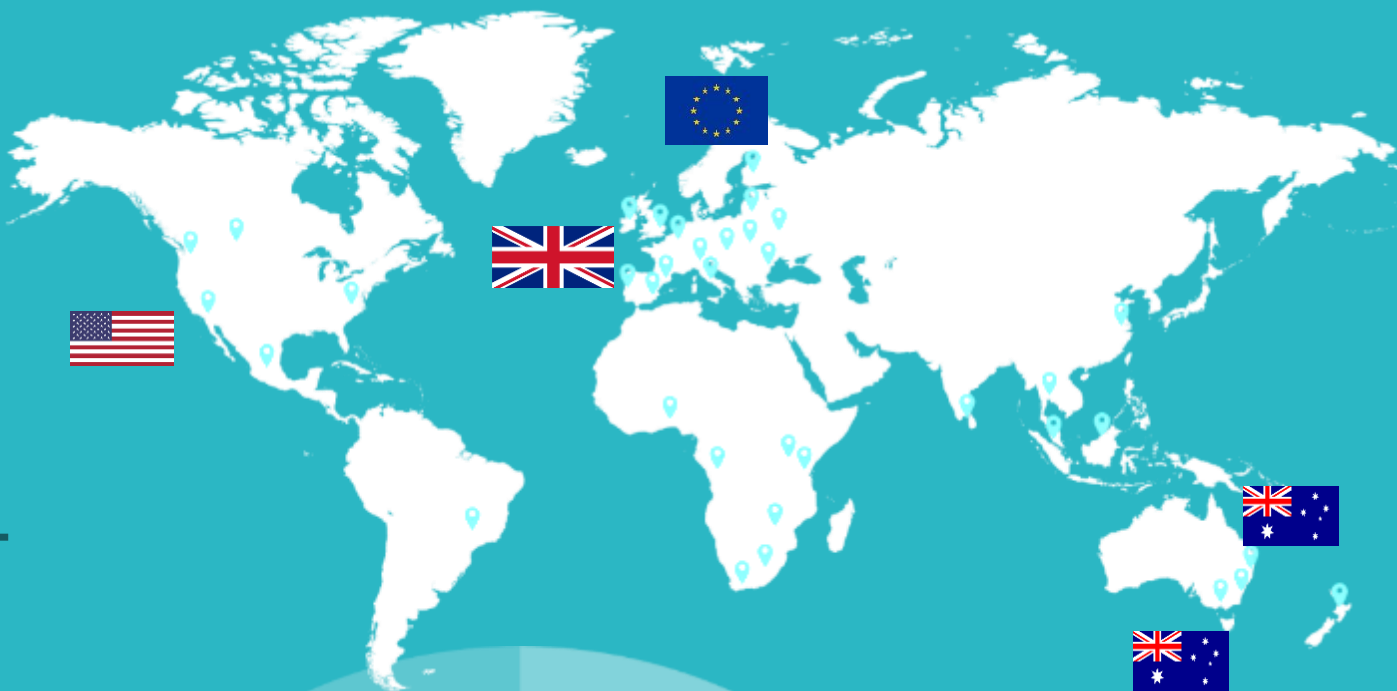
- Patented GeneType Multi Risk Test
- Non-Invasive Prenatal Testing (NIPT)
- Carrier screen testing
- Pharmacogenomics
- Oncogenetic & Monogenic diseases
- Pet care

Revenues anchored by our 3 brands to seize a multi Billion-dollar opportunity.



Global Overview

For personal use only



60

Employees
(FTE) globally

40

Countries

25

Patents Granted*
(9 Pending Worldwide*)

14

Test
Categories

51

Tests

12

Partner
Laboratories

* Patents granted are specific to the GeneType portfolio of products

* Patents granted are specific to the GeneType portfolio of products

Collaborations

Professor Bernard Rosner



Brigham & Women's Hospital and Harvard Medical School, Boston, Massachusetts, USA – Principal Investigator of the Nurses' Health Study (International expert in Biostatistics and breast cancer epidemiology).

Collaborating on a project to improve the GeneType Breast Cancer Test and to Cross-validate the Ovarian cancer test in the Nurses Health Study

Professor Graham Colditz



Deputy Director, Institute for Public Health. Washington University School of Medicine, St. Louis, Missouri (International expert in Biostatistics and breast cancer epidemiology).

Collaborating on a project to validate the GeneType for Breast Cancer Test in African American patients

Professor John Hopper



Professorial Fellow at the Centre for Epidemiology and Biostatistics in the School of Population Global Health, Melbourne University

Collaborating on a project to improve the Genotype for Breast Cancer Test and on a joint project with Prof Emery to develop clinical utility evidence for the GeneType tests

Professor Jon Emery



Professor of Primary Care Cancer Research at the University of Melbourne, and the Victorian Comprehensive Cancer Centre

Collaborating on a joint project with Prof Hopper to develop clinical utility evidence for the GeneType tests

Memorial Sloan Kettering Cancer



Memorial Sloan Kettering Cancer Center

Collaborating on a project to investigate modification of risk in BRCA-positive patients by polygenic risk scores

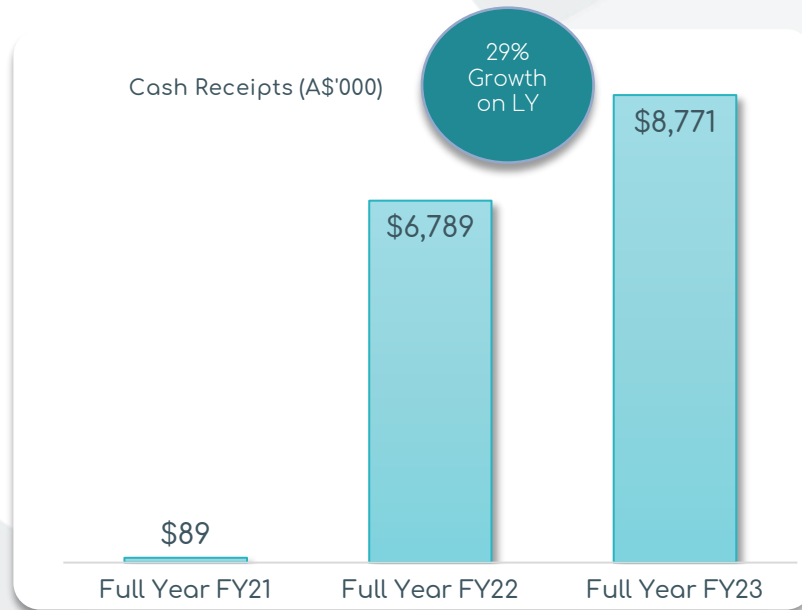
Ohio State University



THE OHIO STATE UNIVERSITY

Collaborating on a project to investigate modification of risk in BRCA-positive patients by polygenic risk scores

Delivering Revenue and Growth



CASH RECEIPTS
FY23 A\$8.8m
+29%

CASH BALANCE
A\$7.9m*

GROSS MARGIN
A\$4.2m

GROSS MARGIN
47%

Strategic & Operational Highlights:

- Group receipts from customers A\$8.8m to 30 June 2023, up 29%.
- June Quarter FY23 receipts were A\$2.1 million.
- GeneType test growth +250% growth in commercial samples
- 20 Medical practices in the U.S. and Australia now repeatedly referring samples for geneType testing – growing weekly
- Launched a National Television campaign in the U.S. for Genetype
- Presented at The American Society of Clinic Oncologists (ASCO) in Chicago
- Attended the Biotechnology Innovation Organisation (BIO) conference in Boston
- Publications validating the use of geneType; identifying those at elevated risk
 - Melanoma, Pancreatic and Prostate Cancer

*Jun 2023 Quarter end cash and cash equivalents of A\$7.9 million as announced on ASX 28 July 2023

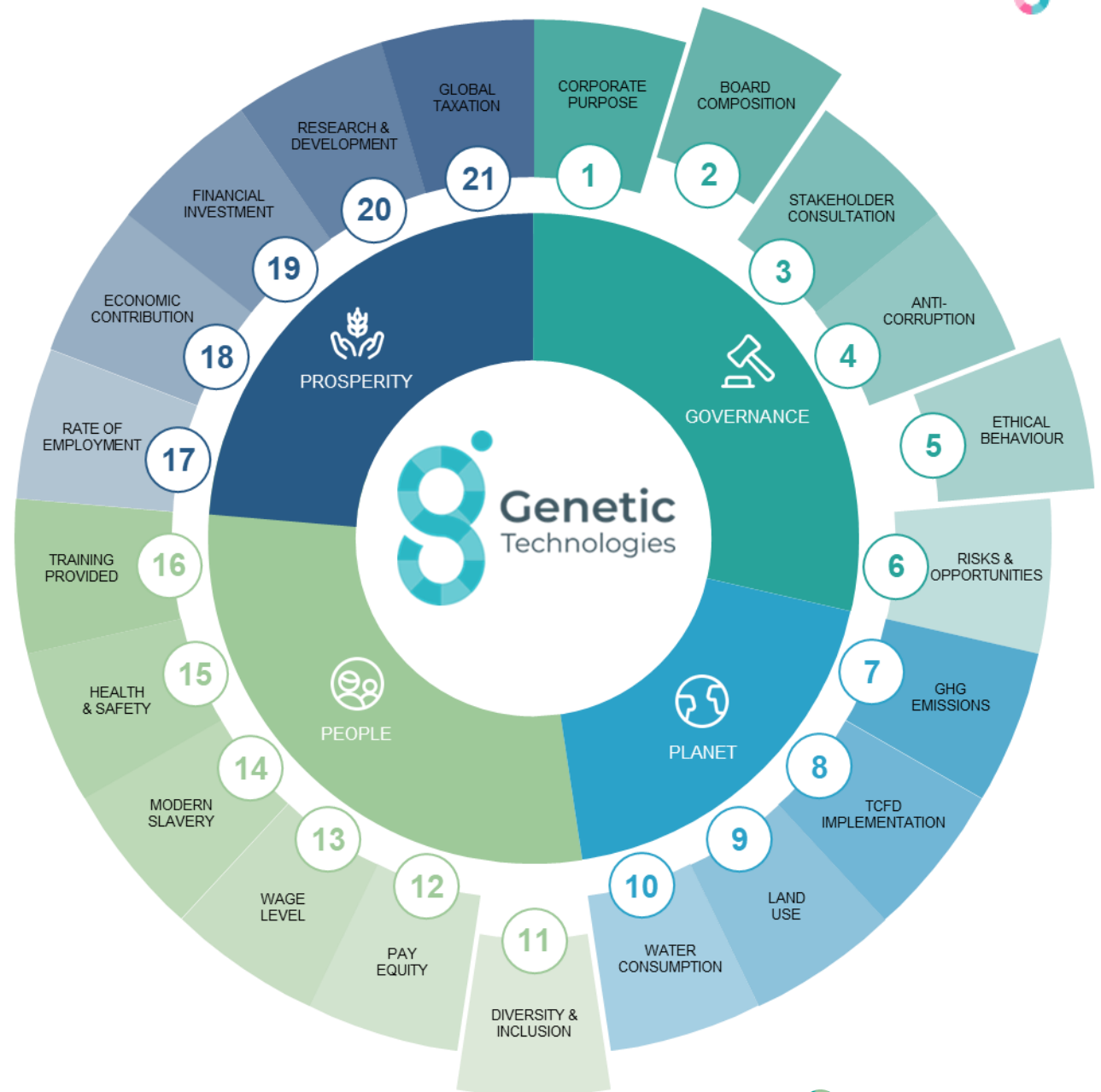
ESG UPDATE Q4 2023

Highlights Q4:

- Board And Executive teams clearly defined vision and purpose
- Introduced updated Maternity Leave Policy exceeding mandatory level, addressing Pay Equity
- Conducted Cybersecurity Training, addressing Risks and Opportunities

Focus areas for Q1 FY24

- Board Composition
- Ethical Behaviour (policy review)
 - Code of conduct
 - Whistle Blower
 - Antibribery
- Diversity & Inclusion
 - Culture and Engagement Survey



Snapshot and Achievements last 12 months

GeneType & Commercialisation

- ✓ FY23 Group Receipts A\$8.8 million, up 29%
- ✓ GeneType risk test: +250% in commercial samples received in June quarter
- ✓ 9 Tests NOW commercially available in the US the geneType Multi-Risk test
- ✓ >100 medical practices on-boarded launching the foundation of geneType Hubs
- ✓ Launched U.S TV campaign

EasyDNA & Affinity DNA

- ✓ Integrated 2 Acquisitions
- ✓ NEW EasyDNA Website ready for launch
- ✓ NEW eCommerce Platform ready to launch
- ✓ Launch Carrier Testing and Non-Invasive Prenatal Tests (NIPT) into Europe
- ✓ Launch DNA storage solution in GTG NATA approved facility

Reimbursement activation

- ✓ Independently developed Budget Impact Model (BIM) identifies US\$1.4 billion dollars in annual saving by ALVA 10
- ✓ Active payer and distribution conversations
- ✓ Progress on US Payer meetings to enable coverage across millions of lives

Partnerships and Conferences

- ✓ Partnerships with Australian Breast Care Centre and Dr Nicole Yap
- ✓ Screening for breast cancer risk with Prof Bruce Mann at Royal Women's Hospital in Melbourne
- ✓ The American Society of Clinic Oncologists (ASCO) in Chicago
- ✓ Biotechnology Innovation Organisation (BIO) conference in Boston
- ✓ International Congress of Genomics (ICG)

Clinical Validity and IP Strategy

- ✓ 6 Peer reviewed publication in 7 months
- ✓ Submitted geneType risk test to NCCN Guidelines
- ✓ Publications
 - ✓ PLOS ONE
 - ✓ Journal of Precision Medicine
 - ✓ European Journal of Cancer prevention
 - ✓ Journal Breast Cancer Research and Treatment
- ✓ 25 Patents granted or pending

Laboratory Capability

- ✓ Gained NATA and CMS-CLIA accreditation and certification for 6 polygenic risk score tests
- ✓ Successful ARTG notification to TGA for company IVDs for all tests on the multi-risk test

Pathways to Market

Executing a multi-brand strategy

For personal use only

Medical & Payer Business to Business (B2B)



Oncology – GTG
Cardiovascular
Prenatal NIPT
Carrier testing
Clinical & Molecular
Metabolic

Consumer initiated testing (CIT) with medical supervision



Expanded Carrier testing & NIPT
Oncology – MultiTest
Cardiovascular – MultiTest
Metabolic – MultiTest
COVID Risk Test
Pharmacogenomics

Direct to Consumer Testing (DTC) with no medical supervision



Ancestry
Paternity
Health & Wellbeing
Pharmacogenetics



Animal
Drug testing
Relationship
DNA Storage

Our Innovation – Multi-Risk Test

GeneType can identify patients 'at risk' before onset and aid in the early detection and treatment.

GeneType Risk assessment test for breast cancer has demonstrated improved early stage detection by 18% and saving approx. US\$1.4B per annum⁴ for the US payer

GeneType Multi-test covers
>70% of mortality
& morbidity

Diseases Areas

Oncology

Breast Cancer
Colorectal Cancer
Prostate Cancer
Melanoma
Pancreatic Cancer
Ovarian Cancer

Cardiovascular

Atrial Fibrillation
Coronary Artery
Disease

Metabolic

Type 2 Diabetes



Phase 1 Launch ²



Phase 2 Launch ³



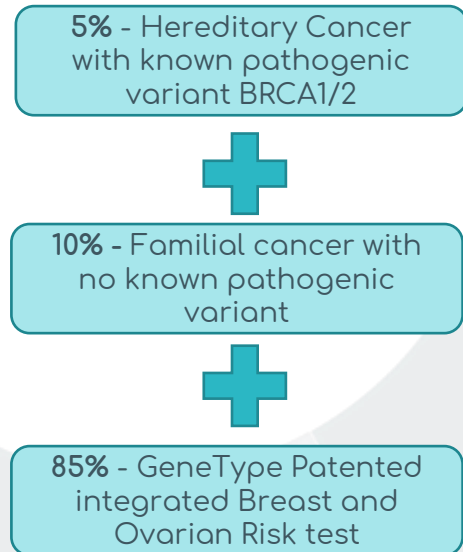
Guideline driven, Actionable results

1. TGA, FDA and EU regulatory approval granted to the sponsor, DNA Genotek
2. Commercial availability expected Q1 CY2022
3. Commercial availability upon regulatory approval
4. Budget Impact Model prepared by Alva10

NEW Comprehensive Breast and Ovarian Cancer test

Evaluates a woman's risk of developing Breast and/or Ovarian Cancer in women 30 years+

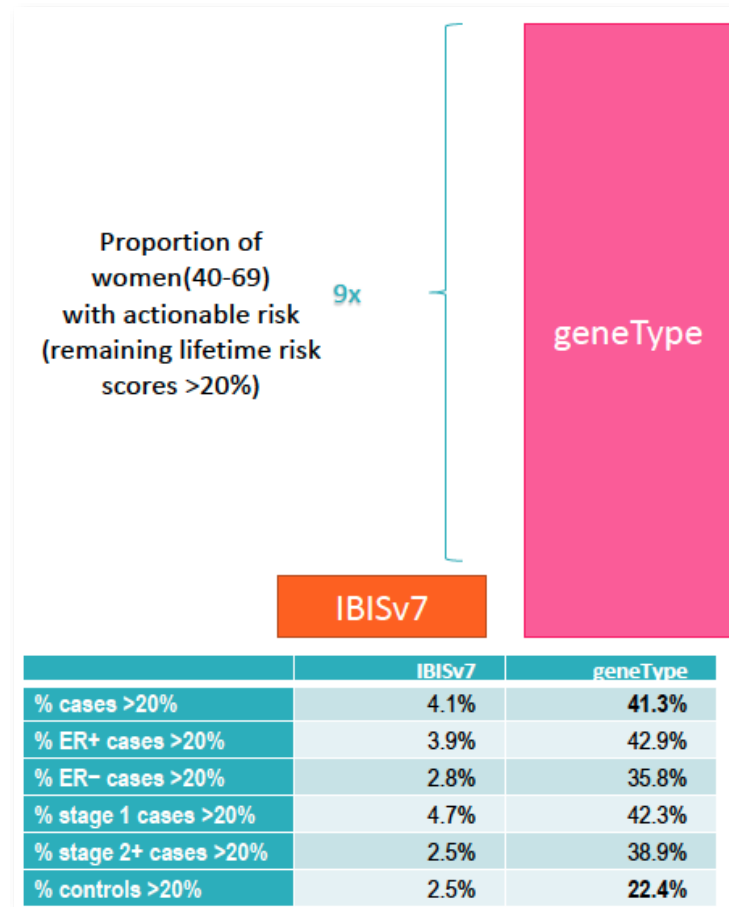
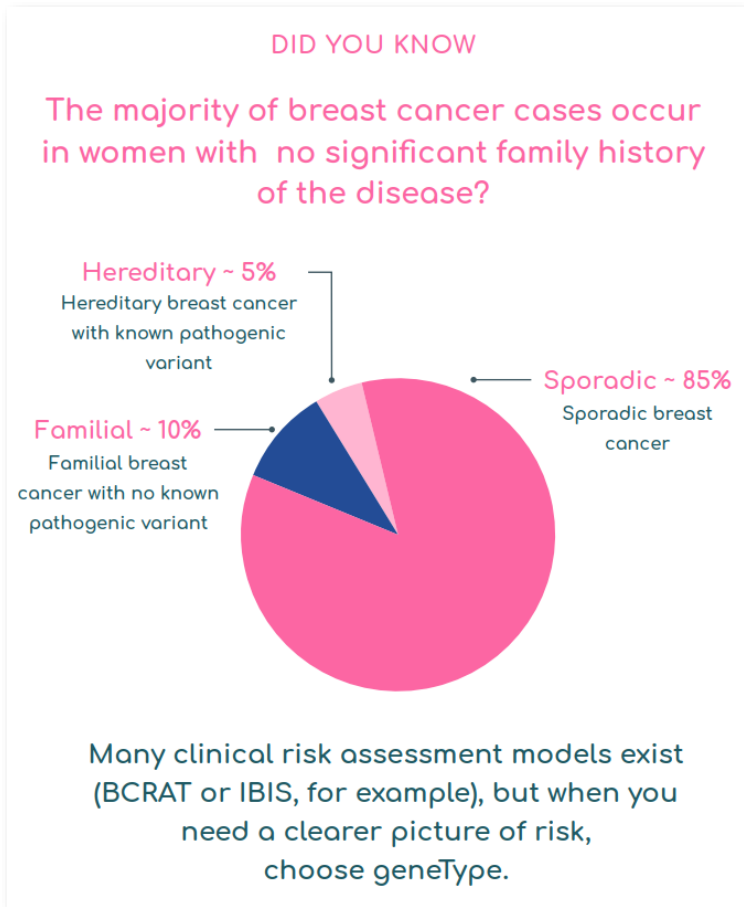
For personal use only



- The test evaluates a women's risk of developing Breast and/or Ovarian Cancer either from a hereditary genetic mutation or from the far more common familial or sporadic cancer.
- GTG's unique approach "appends" the detection of the 13 major "actionable" Breast and Ovarian cancer susceptibility genes to the GeneType test platform.
- Advances the goal of providing population-based genetic screening where up to 85% of cancers diagnosed do not have hereditary or family history

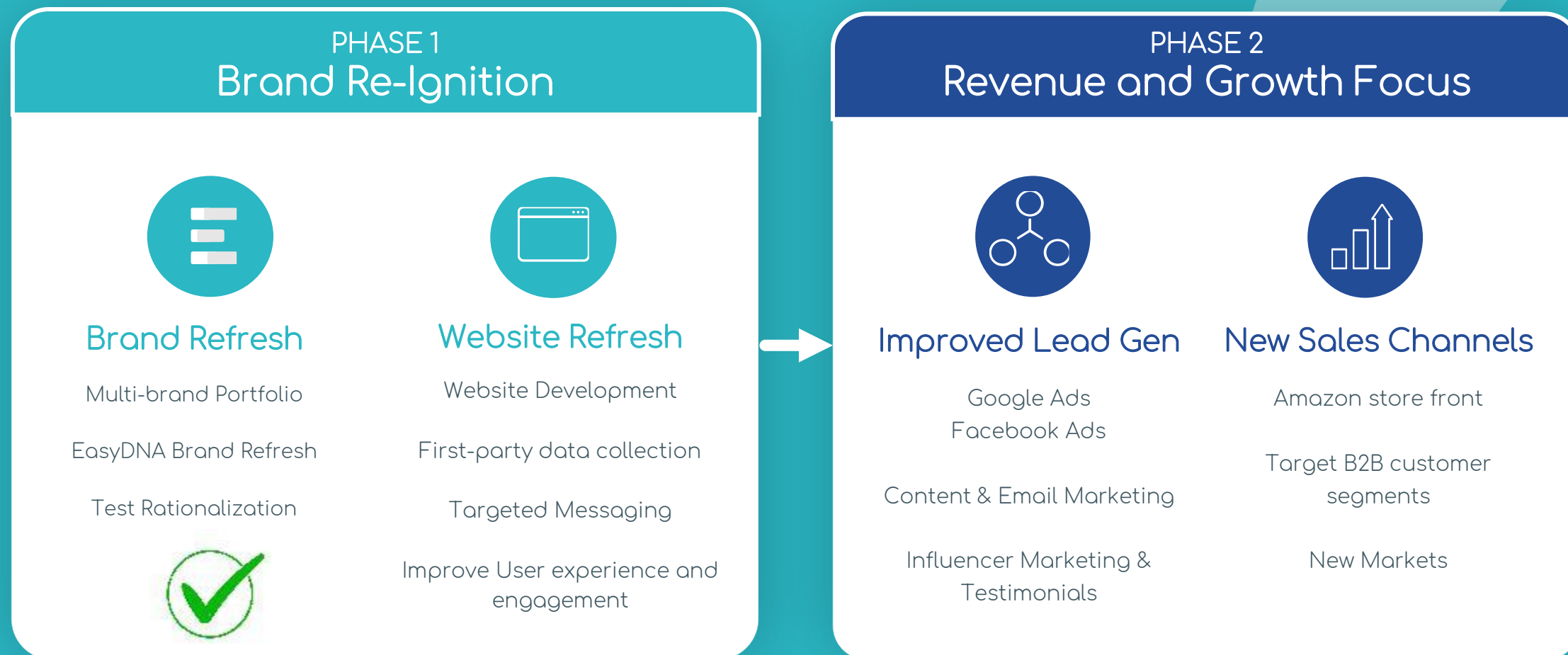
GeneType Identifies up to 9 Times More Cancer Risk Patients Compared to Existing SoC Models¹

For personal use only



DTC - Growth strategy for EasyDNA

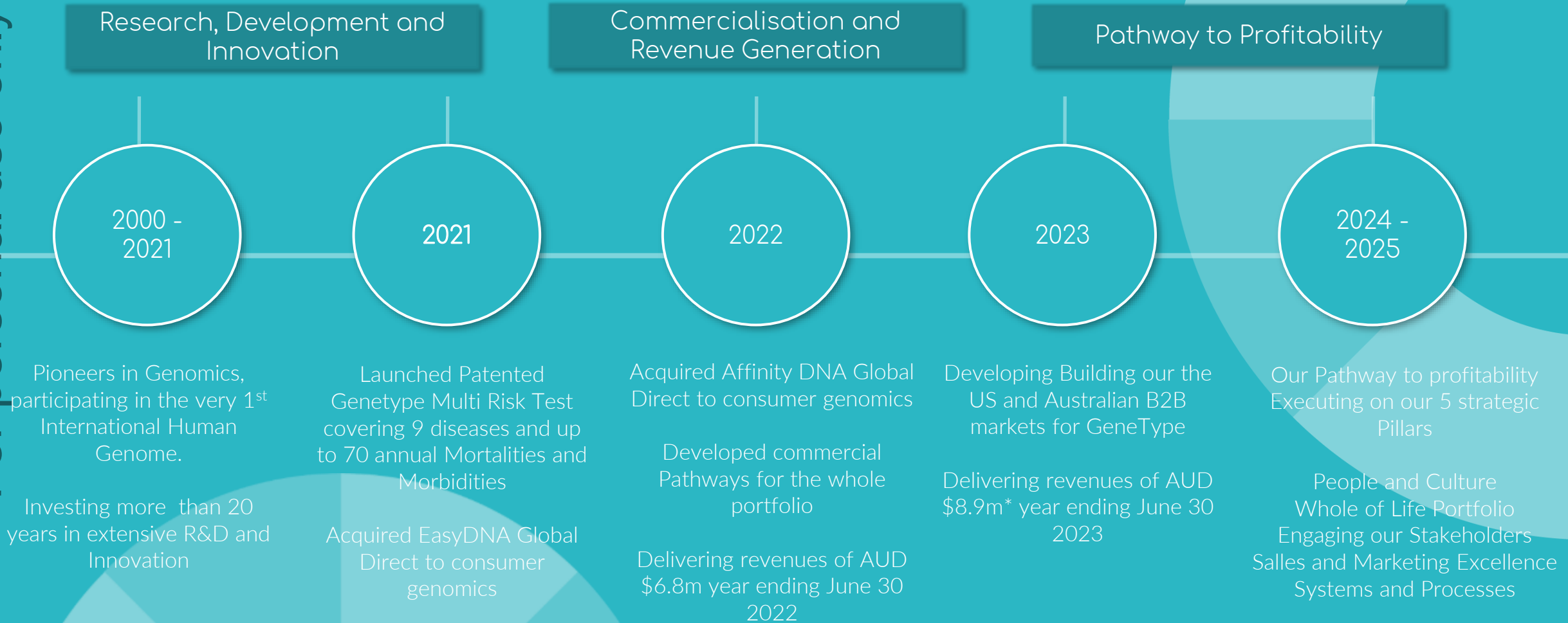
For personal use only



Our Pathway to Profitability

Our Journey from Extensive R&D to Revenue and Profitability

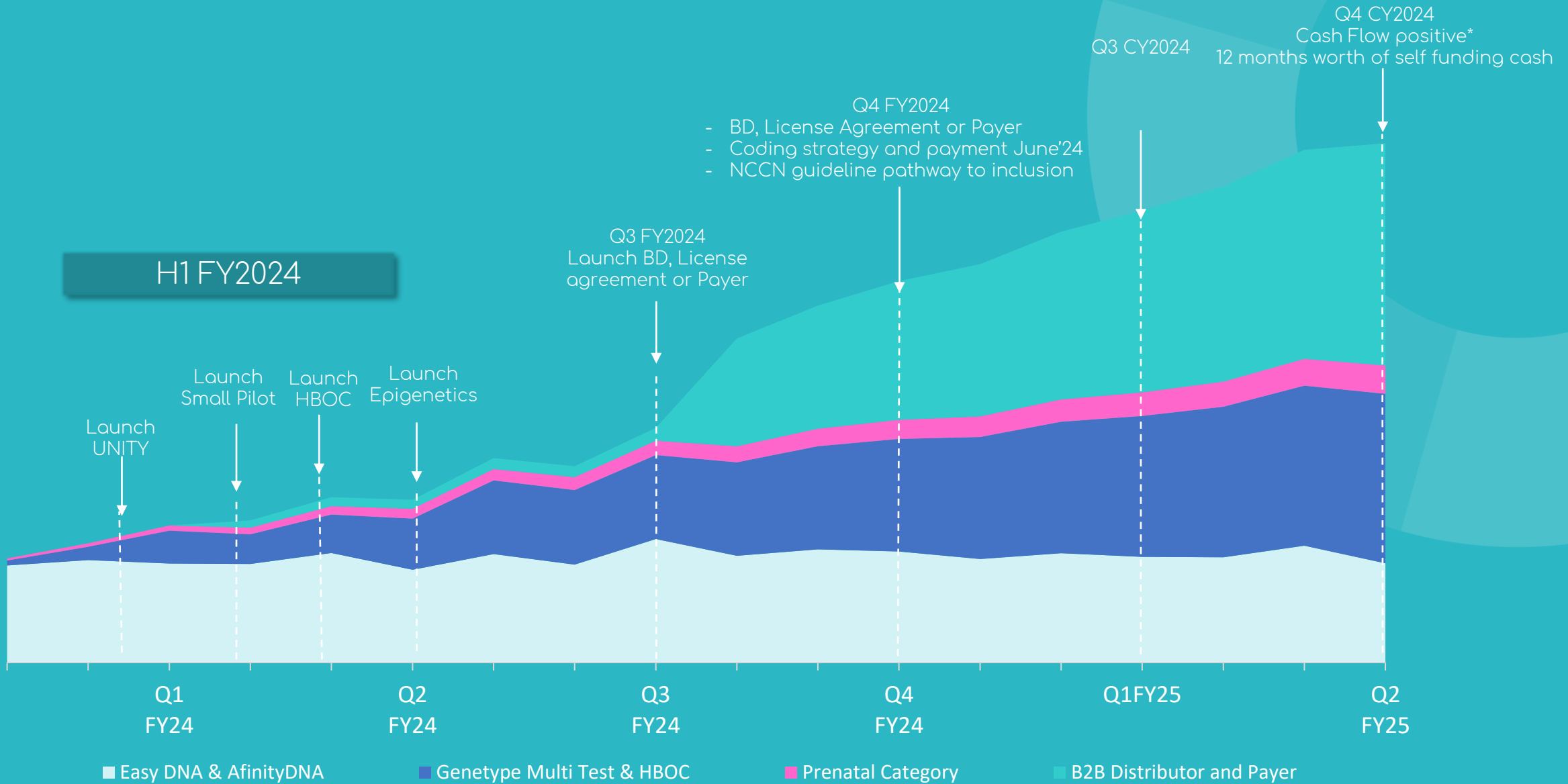
For personal use only



*Cash Receipts – Unaudited accounts

Revenue Drivers and our Pathway to Profitability

For personal use only



This excludes ANY NEW Markets e.g. India, SEA or UAE

*Cash Flow positive will rely on the execution of a large payer group in the US within the next 12 months

HBOC - Hereditary Breast and Ovarian Cancer

Summary

- Developed a clear Vision and Strategy to be leader in personalised predictive genomics
- Identified the Drivers of Revenue and pathway to profitability by the middle of FY25
- Strong momentum in commercial operations with +29% growth in customer receipts
- We have a global operation, a comprehensive human and animal health portfolio
- Engaged with leading global collaborations
- Begun a journey with a strong commitment to ESG principals
- Have a well-defined strategic plan to execute on a multi brand strategy in key regions

Thank you

Investor Relations
Adrian Mulcahy
Market Eye – Automic Group
M: +61 438 630 422
E: adrian.mulcahy@automicgroup.com.au



www.linkedin.com/company/genetype-limited

www.genetype.com

Appendices

Board and Management: Sales and Scientific expertise leading GTG



Mr. Peter Rubinstein
BEc, LLB
Chairman
Non – Executive Director



Dr. Lindsay Wakefield
MBBS
Non – Executive Director



Mr Nick Burrows
B.Comm, FAICD, FCA,
FGIA, FTIA, F Fin
Non – Executive Director



Simon Morriss
GAICD
Chief Executive Officer



**Dr. Jerzy “George”
Muchnicki**
MBBS
Non-Executive Director



Erika Spaeth
PhD
Director of Clinical &
Scientific Affairs



Richard Allman
BSc, PhD
Scientific Advisor



Tony Di Pietro
B. Comm, CA, AGIA, MAICD
CFO & Company Secretary



Carl Stubbings
Chief Commercial
Officer

Strong Scientific Leadership: Advisory Board



Professor Jon Emery

MBBCh MA DPhil FRACGP MRCGP
Research & Education Lead,
Primary Care Integration,
Victorian Comprehensive Cancer
Centre Herman Chair of Primary
Care Cancer Research,
University of Melbourne



Professor Finlay Macrae AO

MBBS, MD, FRACP, FRCP, AGAF
MWGO is Principal Fellow and
Professor, Department of
Medicine, University of
Melbourne, and Head of
Colorectal Medicine and
Genetics, The Royal Melbourne
Hospital



Ora K. Gordon, M.D.

MD, MS, FACMG
Regional Medical Director,
Center for Clinical Genetics &
Genomics. Clinical Director, PSJH
Population Health Genomics
Program. Chair, Integrated
Network Cancer Program,
Professor of Genetics, St John
Cancer Institute



A.Prof Ron Dick

MBBS, FRACP, FCSANZ,
Chairman of Cardiovascular
Institute at Epworth Healthcare,
an Honorary Cardiologist at the
Alfred Hospital and Bendigo
Healthcare Group.

Completed his MBBS in 1979 and
became a Fellow of the
Australian College of Physicians
in 1986. His interventional
cardiology fellowship was from
the University of Michigan
Medical Centre USA.

Financial Overview

- Net cash outflow of A\$9.9 million for the 12 months to 30 June 2023. We continue to grow EasyDNA and Affinity DNA brand sales and develop and commercialise our geneType tests
- Cash reserves will be directed:
 - to support the commercialisation of the GeneType Multi Risk test through the B2B channels with payers, insurers and employers in the United States and expand into Europe;
 - to drive new market opportunities in reimbursable categories by leveraging our strategic relationship with QIAGEN;
 - for funding product research and development;
 - to increase our sales and marketing presences and drive of its tests via the consumer-initiated testing platforms;
 - to execute the go to market, sales and marketing to launch the Comprehensive Hereditary Breast and Ovarian Cancer Risk Test as part of our germline genetic testing division; and
 - for other working capital and general corporate purposes.

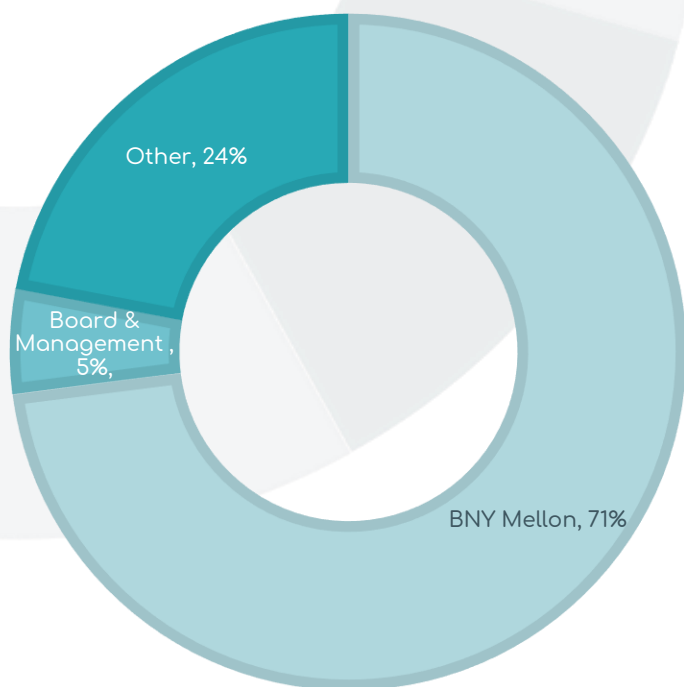
A\$'000	30-June-23	30-June-22	Change
Net operating cashflow	(9,934)	(5,955)	67%
Receipts from customers	8,771	6,789	29%
Cash	7,853	11,733	-33%

¹ Based on cashflow projections

Corporate Overview

Top 50 share registry breakdown

■ BNY Mellon ■ Board & Management ■ Other



Dual Listed on the ASX and Nasdaq

Financial Information

Share price (AUD) as at 4 August 2023	0.2c
ADR price (USD) as at 4 August 2023	\$0.79
Ord Shares on Issue (M)	11,542
ASX 52-week trading (AUD low/high)	0.2/1.3c
Nasdaq 52-week trading (USD low/high)	0.77/2.40
Market Cap (A\$/US\$M)	28.9/19.1
Cash at 30 June 2023	A\$7.9m
Cash at 30 June 2022	A\$11.7m
Debt (30 June 2022 and 30 June 2023)	nil

Our Intellectual Property

4 Patents granted in the US

- Patent No: US 11,257,569, Methods of assessing risk of developing a severe response to Coronavirus infection
- Patent No: US 11,072,830, Methods for breast cancer risk assessment
- Patent No: US 10,683,549, Methods for assessing risk of developing breast cancer
- Patent No: US 10,920,279, Methods for assessing risk of developing breast cancer

2 Patents granted in PRC (China & HK)

- Patent No. 201080033130.5 Methods for Breast Cancer Risk Assessment
- Patent No. 201580063966.2 Methods for assessing risk of developing breast cancer

9 Patent families pending

- Breast cancer risk assessment
- Methods for assessing risk of developing prostate cancer
- Methods for assessing risk of developing ovarian cancer
- Methods of assessing risk of developing a severe response to Coronavirus infection
- Methods of assessing risk of developing a disease
- Methods for assessing risk of developing breast cancer
- Improved methods for assessing risk of developing breast cancer
- Methods of assessing risk of developing breast cancer
- Methods for assessing risk of developing colorectal cancer

Defined Terms

Common Complex Diseases (CCP) – A complex disease is caused by the interaction of multiple genes and environmental factors. Complex diseases are also called multifactorial. Examples of common complex diseases include cancer and heart disease.

Polygenic risk score - a number associated with one's disease risk based on the aggregated effects of individual risk variants through a multiplicative algorithm.

Variant - Single Nucleotide polymorphism (SNP), an alteration in DNA that may be a common or rare event.

Genomic - pertaining to function of genetics from structure to relationship between genetic events.

Genetic - pertaining to a gene.

GWAS - genome-wide association studies are large population level studies which enable scientists to identify genes and genetic markers involved in human disease. This method searches the genome for SNPs that occur more frequently in people with a particular disease than in people without the disease. Each study can look at hundreds or many thousands of SNPs at the same time. Researchers use data from this type of study to pinpoint genetic variations that may contribute to a person's risk of developing a certain disease.

SNP - Single nucleotide polymorphisms, frequently called SNPs (pronounced "snips"), are the most common type of genetic variation among people. Each SNP represents a difference in a single DNA building block, called a nucleotide. For example, a SNP may replace the nucleotide cytosine (C) with the nucleotide thymine (T) in a certain stretch of DNA.

Serious Disease Risk (SDR) - Risk associated with acquiring COVID-19 and requiring hospitalisation with its associated morbidities and mortalities.

Germline Testing – Germline testing is done on cells that do not have cancer. It is done to see if a person has a gene mutation that is known to increase the risk of developing cancers and other health problems. This test uses cells (such as blood or skin cells) that do not have any cancer cells. Germline mutations can sometimes be passed down from parents.

Clinical Laboratory Improvement Amendments (CLIA) - Regulates laboratory testing and require clinical laboratories to be certified by the Center for Medicare and Medicaid Services (CMS) before they can accept human samples for diagnostic testing

National Association of Testing Authorities (NATA) - the authority responsible for the accreditation of laboratories, inspection bodies, calibration services, producers of certified reference materials and proficiency testing scheme providers throughout Australia. It is also Australia's compliance monitoring authority for the OECD Principles of GLP. NATA provides independent assurance of technical competence through a proven network of best practice industry experts for customers who require confidence in the delivery of their products and services.

Next Generation Sequencing (NGS) – Next-generation sequencing (NGS), also known as high-throughput sequencing, is the catch-all term used to describe a number of different modern sequencing technologies. These technologies allow for sequencing of DNA and RNA much more quickly and cheaply than the previously used Sanger sequencing, and as such revolutionised the study of genomics and molecular biology.

Laboratory Developed Tests (LDT) – A type of in vitro diagnostic test that is designed, manufactured and used within a single laboratory.

Consumer Initiated Tests (CIT) - laboratory testing that is initiated by the consumer without a physician order but reviewed and communicated back to the consumer via a physician.

Direct to Consumer (DTC) – laboratory testing that is initiated by the consumer without a physician order. The results are reported back directly to the consumer.

Health Care Professionals (HCP) – physician, GP, or specialist authorized to receive the patient results