

ASX Announcement

7 June 2023

COLINA LITHIUM DEPOSIT RESOURCE UPGRADE IMMINENT

All assay results received, on target for June 2023 release

HIGHLIGHTS

- Major resource definition drilling program at the Colina Lithium Deposit in Brazil, is now complete with all assay results received from the laboratory.
- Independent consultants SGS Geological Services in Canada have commenced the mineral resource update, on schedule for a June release.
- A total of 135 diamond drill holes for 39,033m have been completed as part of the 65,000m Salinas infill drilling campaign.
- Infill drilling confirms the Colina mineral resource system continuity to the south-west, with the system remaining wide open.
- Final significant intercepts from the MRE drilling program include:
 - SADD093: 8.16m @ 1.36% Li₂O from 318.00m
 - SADD096: 13.80m @ 1.35% Li₂O from 283.30m
 - SADD107: 22.00m @ 0.98% Li₂O from 309.00m
 - SADD112: 8.36m @ 1.50% Li₂O from 243.59m
 - SADD114: 16.93m @ 1.36% Li₂O from 187.07m
 - SADD119: 14.70m @ 1.72% Li₂O from 132.94m
 - SADD119: 8.48m @ 1.74% Li₂O from 209.84m
 - SADD125: 14.94m @ 1.01% Li₂O from 166.00m
 - SADD133: 11.11m @ 0.97% Li₂O from 134.44m
 - SADD134: 13.24m @ 1.89% Li₂O from 168.07m
- Eight diamond drilling rigs will remain on site, continuing to operate throughout 2023, focusing on infill drilling to increase the MRE JORC classification, extending the Colina Lithium Deposit to the south-west where the high-grade mineralisation remains open along strike and to test newly identified high priority regional targets.
- Highly anticipated results from the extensional and regional programs will be reported as they arrive.

Latin Resources Limited (ASX: LRS) ("Latin" or "the Company") is pleased to provide an update on the Colina resource definition drilling program, now complete at the Company's 100% owned Salinas Lithium Project ("Salinas") in Brazil.

Latin Resources’ VP of Operations – Americas, Tony Greenaway commented:

“With all the planned drilling for our MRE upgrade now complete and assay results received, SGS has commenced the resource estimation process and this is on track to be released in June. We are all eagerly awaiting the outcome of this process, as we believe that we will see a significant expansion in the JORC resource for Colina, given the exceptional results we have been seeing in our drilling this year.

“Our drilling rigs are still turning on site, with all eight rigs operational. This next phase of drilling will focus on the continued expansion of the Colina deposit to the south-west, where our high-grade mineralisation remains open, infill drilling to increase the JORC classification of the defined resources, and testing of new areas along strike, where our regional teams have identified multiple new target areas through mapping and geochemical sampling.”

Resource definition drilling

The Company’s diamond resource definition drilling campaign (“**Program**”), aimed at providing sufficient drill coverage for the Colina Mineral Resource Estimate (“**MRE**”), is now complete, with all assay results received from the laboratory.

The successful Program comprised a total of 135 drill holes (*Figure 1*) for 39,033m of drill core, which represents an additional 88 holes and 28,505m over and above the 47 holes and 10,528m used in the Company’s maiden MRE released on 8 December 2022.

SGS Geological Services (“**SGS**”) in Canada has been appointed to undertake the independent update of the Colina MRE, which is expected to be completed in late June.

The Program at Colina had the main objective of increasing the overall resource base at Colina along with increasing the confidence level of the lithium orebody by converting a significant amount of Inferred Resource into the Indicated Resource category. In doing so, the Company has developed and supplied SGS with updated wireframes of the Colina pegmatite mineralisation, which are expected to significantly expand the existing 13.3Mt @1.2% Li₂O resource¹ (2.08Mt @ 1.21% Li₂O Indicated and 11.17Mt @ 1.21% Li₂O Inferred) by incorporating new high-grade pegmatite swarms encountered to the west and southwest of the Colina Deposit.

Final assay results from the Program have been successful in confirming both the grade consistency and pegmatite continuity, with the Colina Deposit growing significantly in size with each step-out drillhole.

The Company remains confident that the balance of the 65,000m drilling campaign, which is expected to be completed in late 2023, will unlock further value from the Colina Deposit.

All drillhole collars and significant intercepts that will comprise the Colina MRE update are tabulated in Appendix 1.

The Maiden Mineral Resource Estimate for Colina comprises:

Table 1: Maiden Mineral Resource Estimate for the Colina Lithium Deposit (reported above a 0.5% Li₂O cut-off)

| Deposit | Resource Category | Grade Cut-off | Tonnes (Mt) | Grade (Li ₂ O %) | Li ₂ O (Kt) | Contained LCE (Kt) |
|--------------|-------------------|---------------|--------------|-----------------------------|------------------------|--------------------|
| Colina | Indicated | 0.50 | 2.08 | 1.21 | 25.1 | 60 |
| | Inferred | 0.50 | 11.17 | 1.21 | 135.2 | 334 |
| Total | | | 13.25 | 1.21 | 160.3 | 396 |

*NOTE:

1. All figures are rounded to reflect the relative accuracy of the estimate and numbers may not add due to rounding.
2. Mineral Resources have been reported at a 0.5% Li₂O cut-off.
3. Effective date November 25th 2022, refer to ASX Announcement dated 8 December 2022.
4. The estimate of Mineral Resources may be materially affected by environmental, permitting, legal, title, taxation, socio-political, marketing or other relevant issues.

¹ Refer to ASX Announcement dated 8 December 2023

For personal use only

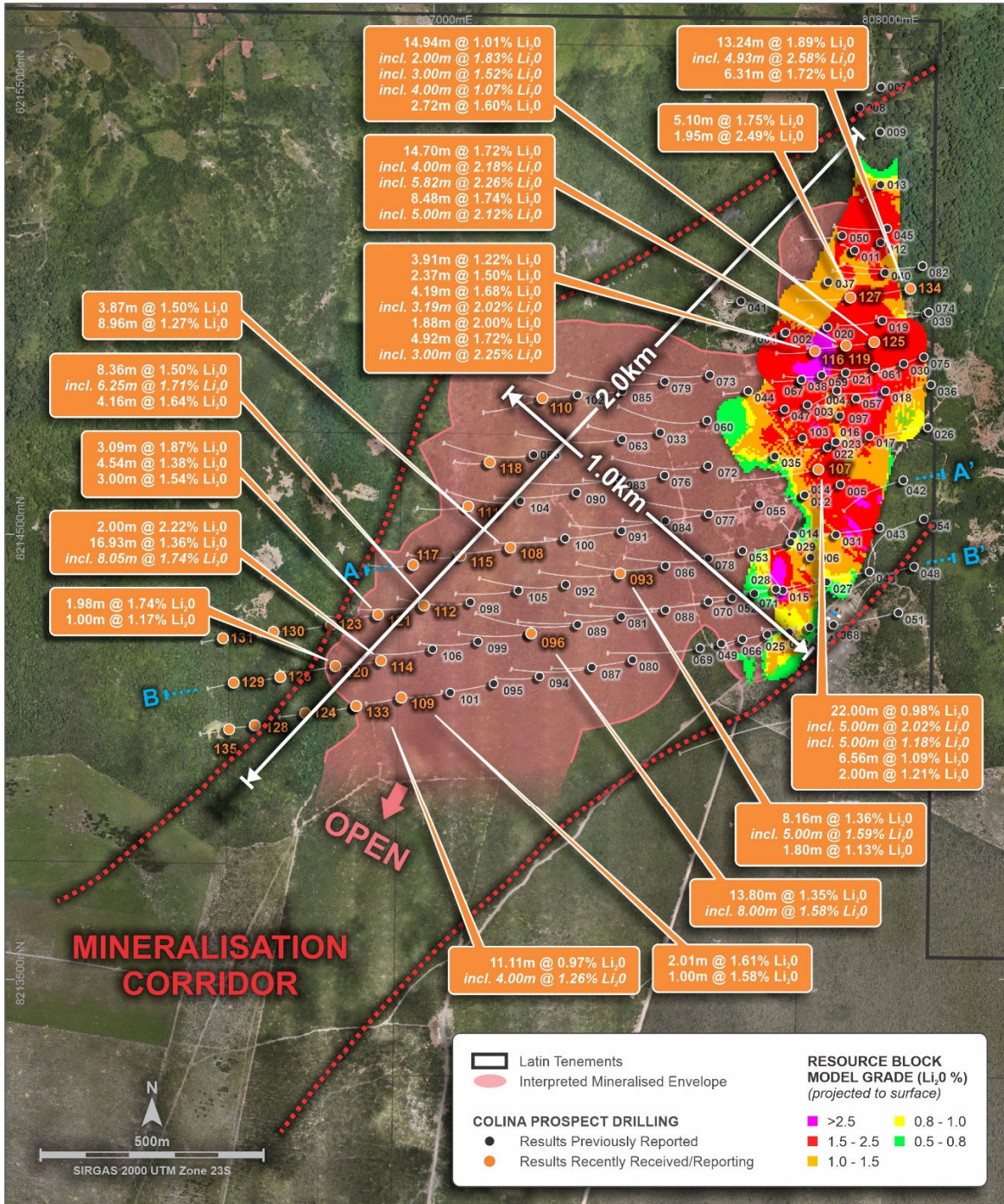


Figure 1: Colina Deposit drill collar plan highlighting potential MRE growth areas, including Colina West and Colina South

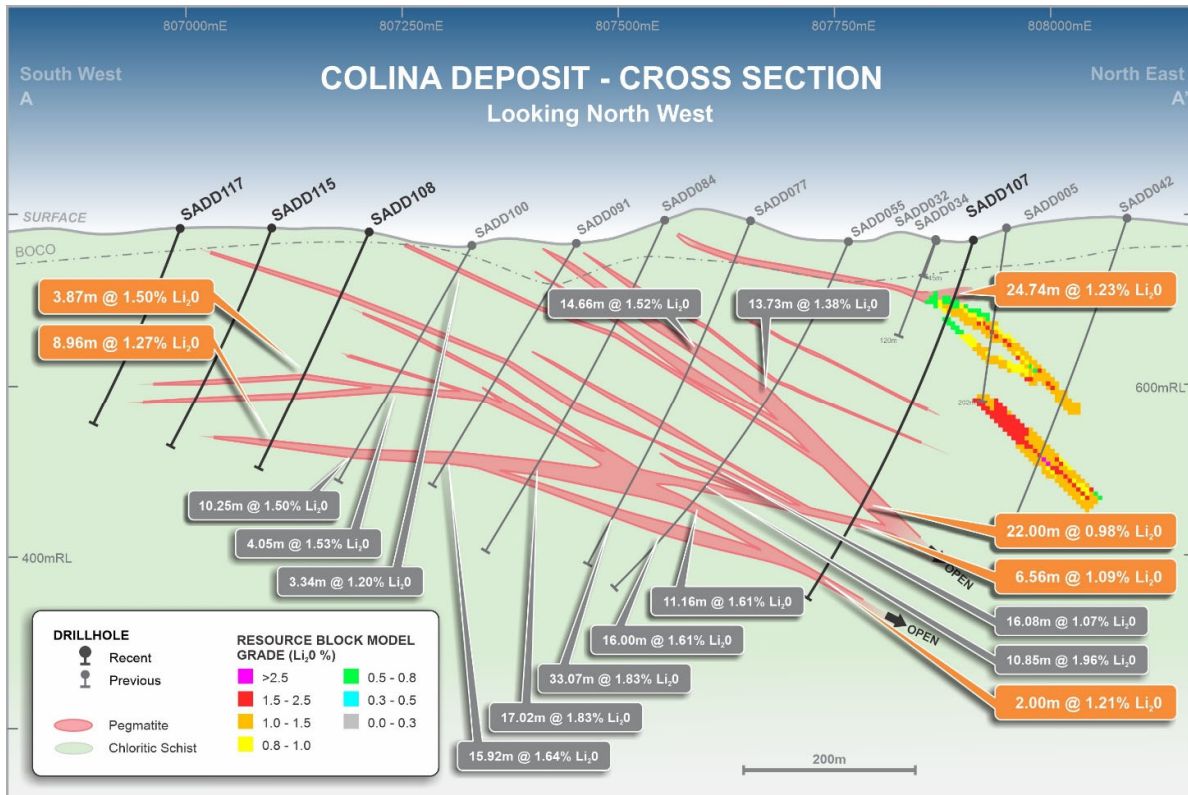


Figure 2: Drill section A-A' showing the existing Colina MRE block model, and selected pegmatite intersections

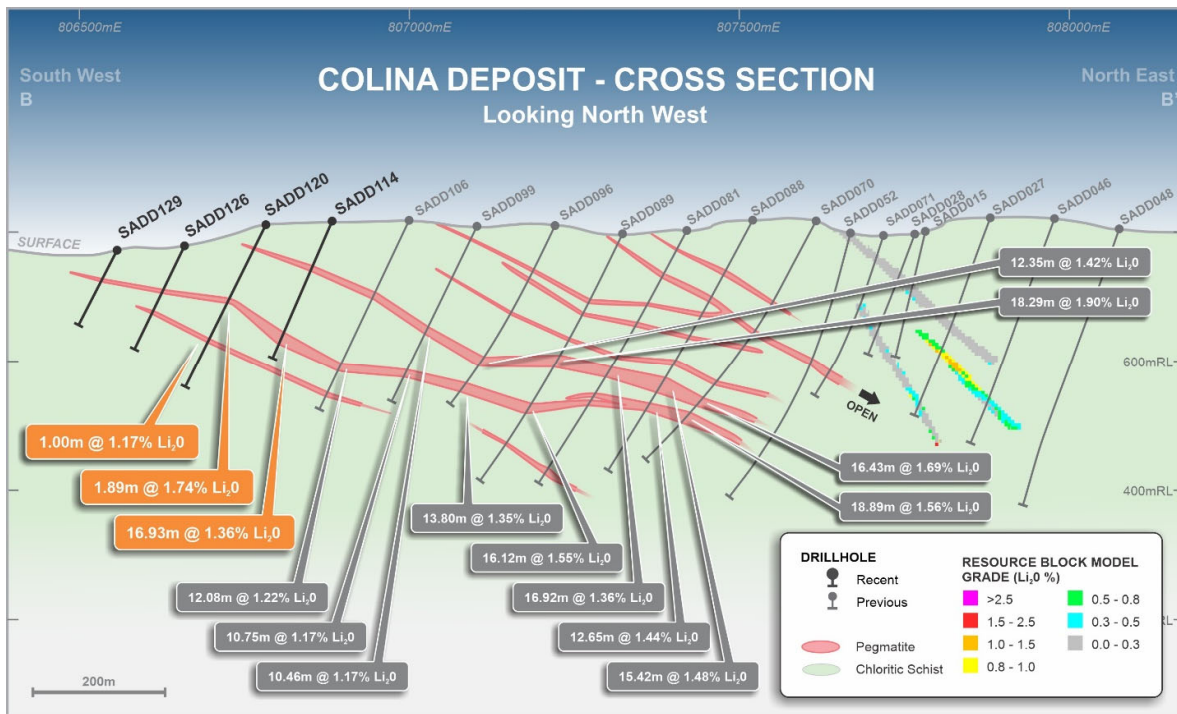


Figure 3: Drill section B-B' showing the existing Colina MRE block model, and selected pegmatite intersections

For personal use only

Next steps

- Strong indications are present for continuation of the pegmatite mineralisation beyond the Colina MRE area and toward the south-west, with the Company focusing drilling efforts on these areas throughout the remainder of 2023.
- Drilling at Colina will continue to operate at full capacity following the MRE update, with all eight diamond drilling rigs remaining on site through the balance of 2023, fulfilling the Company's commitment to drill 65,000m. The focus of the drilling will now be split as follows:
 - Ongoing systematic step-out drilling to the southwest of Colina, where the high-grade lithium mineralisation remains open.
 - Targeted large diameter PQ drilling to provide material for metallurgical pilot plant scale Dense Media Separation ("DMS").
 - Drill testing of several new target areas identified within the 'Colina Corridor' through ongoing regional exploration mapping and geochemical sampling.
- Following the announcement on 23 March 2023, the Company confirms the Preliminary Economic Assessment ("PEA") will be defined further after the release of the Colina MRE update in June 2023, allowing the updated MRE to be incorporated in the PEA study metrics.
- The Company still intends to move directly to a Definitive Feasibility Study ("DFS"), immediately following the release of the PEA, and with progressing other works including large scale DMS test work of the Colina lithium ore.
- The Company is debt free and currently has cash in the bank of \$50.2 million at 30 April 2023.

Ends

This Announcement has been authorised for release to ASX by the Board of Latin Resources.

For further information please contact:

Chris Gale
Managing Director
Latin Resources Limited
+61 8 6117 4798

Fiona Marshall
Senior Communications Advisor
White Noise Communications
+61 400 512 109
fiona@whitenoisecomms.com

info@latinresources.com.au
www.latinresources.com.au

About Latin Resources

Latin Resources Limited (ASX: LRS) is an Australian-based mineral exploration company, with projects in South America and Australia, that is developing mineral projects in commodities that progress global efforts towards Net Zero emissions.

The Company is focused on its flagship Salinas Lithium Project in the pro-mining district of Minas Gerais Brazil, where the Company has defined a Maiden Mineral Resource Estimate of 13.3Mt @ 1.2% Li₂O with an exploration target of 22Mt at its Colina Deposit. Latin has appointed leading mining consultant SGS Geological Services to undertake feasibility and metallurgical studies at the Salinas Lithium Project. Latin also holds the Catamarca Lithium Project in Argentina and through developing these assets, aims to become one of the key lithium players to feed the world's insatiable appetite for battery metals.*

The Australian projects include the Cloud Nine Halloysite-Kaolin Deposit. Cloud Nine Halloysite is being tested by CRC CARE aimed at identifying and refining halloysite usage in emissions reduction, specifically for the reduction in methane emissions from cattle.

**For full details of the Colina Deposit MRE and Exploration Target, please refer to ASX Announcement dated 8 December 2022.*

Forward-Looking Statement

This ASX announcement may include forward-looking statements. These forward-looking statements are not historical facts but rather are based on Latin Resources Ltd.'s current expectations, estimates and assumptions about the industry in which Latin Resources Ltd operates, and beliefs and assumptions regarding Latin Resources Ltd.'s future performance. Words such as "anticipates", "expects", "intends", "plans", "believes", "seeks", "estimates", "potential" and similar expressions are intended to identify forward-looking statements. Forward-looking statements are only predictions and are not guaranteed, and they are subject to known and unknown risks, uncertainties and assumptions, some of which are outside the control of Latin Resources Ltd. Past performance is not necessarily a guide to future performance and no representation or warranty is made as to the likelihood of achievement or reasonableness of any forward-looking statements or other forecast. Actual values, results or events may be materially different to those expressed or implied in this ASX announcement. Given these uncertainties, recipients are cautioned not to place reliance on forward looking statements. Any forward-looking statements in this announcement speak only at the date of issue of this announcement. Subject to any continuing obligations under applicable law and the ASX Listing Rules, Latin Resources Ltd does not undertake any obligation to update or revise any information or any of the forward-looking statements in this announcement or any changes in events, conditions or circumstances on which any such forward looking statement is based.

Competent Person Statement – Salinas Lithium Project

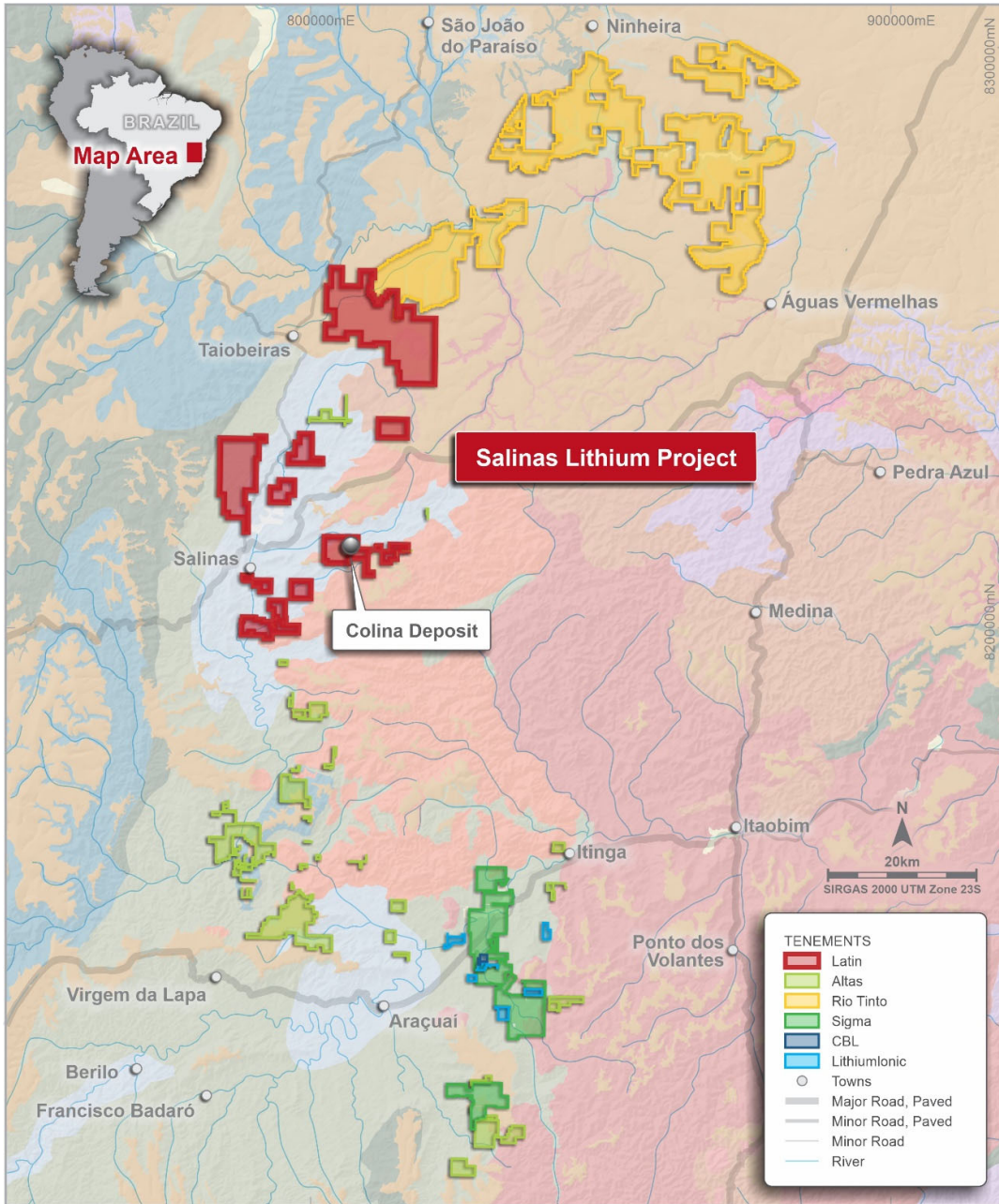
The information in this report that relates to Geological Data and Exploration Results for the Salinas Lithium Project is based on information compiled by Mr Anthony Greenaway, who is a Member of the Australian Institute of Mining and Metallurgy. Mr Greenaway sufficient experience which is relevant to the style of mineralisation and type of deposit under consideration and to the activity which he is undertaking to qualify as a Competent Person as defined in the 2012 Edition of the 'Australasian Code for Reporting of Exploration Results, Mineral Resources and Ore Reserves'. Mr Greenaway consents to the inclusion in this report of the matters based on his information, and information presented to him, in the form and context in which it appears.

The information in this report that relates the Mineral Resource Estimate and exploration targets for the Salinas Lithium Project are based on the information compiled by Mr Marc-Antoine Laporte M.Sc., P.Geo, who is an employee of SGS Canada Ltd and a member of the L'Ordre des Géologues du Québec. He is a Senior Geologist for the SGS Geological Services Group and as more than 15 years of experience in industrial mineral, base and precious metals exploration as well as Mineral Resource evaluation and reporting. Mr Laporte sufficient experience which is relevant to the style of mineralisation and type of deposit under consideration and to the activity which he is undertaking to quality as a Competent Person as defined in the 2012 Edition of the 'Australasian Code for Reporting of Exploration Results, Mineral Resources and Ore Reserves'.

APPENDIX 1

FIGURE 4

SALINAS LITHIUM PROJECT REGIONAL GEOLOGY AND TENURE



For personal use only

TABLE 2
COLINA MINERAL RESOURCE DRILL COLLAR TABLE

| Hole ID | Easting (m) | Northing (m) | RL (m) | Azi (deg) | Dip (deg) | EOH Depth (m) | Hole Status |
|---------|-------------|--------------|--------|-----------|-----------|---------------|-------------|
| SADD001 | 807784.51 | 8214950.03 | 722.82 | 240 | -84 | 120.68 | Complete |
| SADD002 | 807787.78 | 8214951.92 | 722.58 | 60 | -65 | 170.42 | Complete |
| SADD003 | 807836.52 | 8214789.66 | 770.28 | 240 | -65 | 157.25 | Complete |
| SADD004 | 807902.59 | 8214821.74 | 766.12 | 240 | -65 | 170.00 | Complete |
| SADD005 | 807911.30 | 8214610.97 | 783.18 | 240 | -80 | 201.60 | Complete |
| SADD006 | 807844.29 | 8214447.66 | 812.99 | 240 | -84 | 265.85 | Complete |
| SADD007 | 808002.10 | 8215501.63 | 581.57 | 240 | -80 | 173.92 | Complete |
| SADD008 | 807954.35 | 8215455.51 | 584.82 | 230 | -80 | 62.82 | Complete |
| SADD009 | 807999.82 | 8215400.73 | 599.45 | 230 | -80 | 59.77 | Complete |
| SADD010 | 807920.52 | 8215565.69 | 563.69 | 230 | -80 | 81.12 | Complete |
| SADD011 | 807943.22 | 8215136.45 | 690.79 | 290 | -84 | 26.22 | Complete |
| SADD012 | 808001.30 | 8215153.98 | 688.79 | 230 | -80 | 134.50 | Complete |
| SADD013 | 808001.46 | 8215283.43 | 627.64 | 230 | -65 | 131.45 | Complete |
| SADD014 | 807804.92 | 8214497.39 | 800.19 | 320 | -75 | 169.35 | Complete |
| SADD015 | 807782.28 | 8214374.03 | 801.54 | 320 | -65 | 216.30 | Complete |
| SADD016 | 807900.35 | 8214705.83 | 772.65 | 240 | -80 | 300.70 | Complete |
| SADD017 | 807975.77 | 8214719.65 | 781.89 | 260 | -70 | 229.05 | Complete |
| SADD018 | 808012.04 | 8214821.09 | 778.37 | 260 | -70 | 271.65 | Complete |
| SADD019 | 808004.60 | 8214978.64 | 767.38 | 260 | -70 | 275.60 | Complete |
| SADD020 | 807881.89 | 8214963.58 | 738.93 | 260 | -80 | 261.10 | Complete |
| SADD021 | 807922.82 | 8214862.47 | 753.88 | 260 | -65 | 267.60 | Complete |
| SADD022 | 807881.82 | 8214694.57 | 769.77 | 240 | -80 | 141.70 | Complete |
| SADD023 | 807901.50 | 8214706.54 | 772.63 | 260 | -70 | 133.05 | Complete |
| SADD024 | 807841.85 | 8214292.45 | 827.69 | 260 | -70 | 331.90 | Complete |
| SADD025 | 807747.28 | 8214274.93 | 827.26 | 260 | -67 | 283.95 | Complete |
| SADD026 | 808106.56 | 8214739.36 | 789.37 | 260 | -70 | 360.35 | Complete |
| SADD027 | 807880.33 | 8214392.74 | 821.99 | 260 | -70 | 325.90 | Complete |
| SADD028 | 807766.00 | 8214376.75 | 796.90 | 260 | -70 | 198.55 | Complete |
| SADD029 | 807799.45 | 8214482.47 | 801.05 | 260 | -65 | 233.60 | Complete |
| SADD030 | 808052.97 | 8214881.61 | 784.48 | 257 | -69 | 348.35 | Complete |
| SADD031 | 807901.06 | 8214499.43 | 794.26 | 260 | -70 | 321.90 | Complete |
| SADD032 | 807830.47 | 8214588.11 | 770.51 | 260 | -70 | 120.00 | Complete |
| SADD033 | 807506.77 | 8214728.24 | 806.73 | 260 | -70 | 429.20 | Complete |
| SADD034 | 807831.26 | 8214588.20 | 770.44 | 260 | -70 | 45.00 | Complete |
| SADD035 | 807764.12 | 8214674.85 | 760.15 | 260 | -80 | 126.95 | Complete |
| SADD036 | 808113.96 | 8214834.78 | 779.50 | 260 | -70 | 399.35 | Complete |
| SADD037 | 807883.97 | 8215066.46 | 715.47 | 260 | -75 | 255.15 | Complete |
| SADD038 | 807823.35 | 8214845.64 | 759.23 | 260 | -70 | 183.20 | Complete |
| SADD039 | 808102.49 | 8214991.61 | 750.42 | 260 | -70 | 306.40 | Complete |
| SADD040 | 808010.69 | 8215085.82 | 731.88 | 260 | -70 | 305.25 | Complete |
| SADD041 | 807688.27 | 8215022.35 | 730.44 | 260 | -70 | 100.70 | Complete |
| SADD042 | 808052.03 | 8214620.57 | 791.61 | 260 | -70 | 400.85 | Complete |

| | | | | | | | |
|---------|------------|-------------|--------|-----|-----|--------|-----------|
| SADD043 | 807999.09 | 8214515.04 | 799.58 | 260 | -70 | 351.40 | Complete |
| SADD044 | 807704.29 | 8214820.94 | 760.30 | 260 | -70 | 147.40 | Complete |
| SADD045 | 808015.65 | 8215184.88 | 678.18 | 260 | -70 | 300.75 | Complete |
| SADD046 | 807975.65 | 8214415.54 | 819.25 | 260 | -70 | 366.50 | Complete |
| SADD047 | 807786.03 | 8214780.06 | 755.40 | 260 | -68 | 104.00 | Complete |
| SADD048 | 808076.24 | 8214427.01 | 804.68 | 260 | -70 | 463.80 | Complete |
| SADD049 | 807643.68 | 8214255.09 | 827.94 | 260 | -80 | 132.45 | Complete |
| SADD050 | 807914.53 | 8215168.78 | 672.24 | 260 | -68 | 210.35 | Complete |
| SADD051 | 808041.47 | 8214324.20 | 821.31 | 260 | -54 | 435.10 | Complete |
| SADD052 | 807668.17 | 8214357.01 | 797.38 | 260 | -70 | 450.40 | Complete |
| SADD053 | 807690.88 | 8214462.62 | 782.31 | 260 | -75 | 321.30 | Complete |
| SADD054 | 808097.82 | 8214534.02 | 774.25 | 260 | -70 | 451.90 | Complete |
| SADD055 | 807730.00 | 8214567.00 | 769.01 | 260 | -65 | 499.10 | Complete |
| SADD056 | 807889.48 | 8213891.18 | 832.94 | 260 | -60 | 432.20 | Complete |
| SADD057 | 807946.30 | 8214803.64 | 760.90 | 260 | -74 | 270.40 | Complete |
| SADD058 | 807658.54 | 8213556.51 | 834.43 | 260 | -60 | 448.70 | Complete |
| SADD059 | 807868.86 | 8214855.95 | 765.78 | 260 | -74 | 265.85 | Complete |
| SADD060 | 807612.10 | 8214754.97 | 789.68 | 260 | -72 | 460.90 | Complete |
| SADD061 | 807989.27 | 8214873.20 | 767.41 | 262 | -70 | 280.70 | Complete |
| SADD062 | 807795.91 | 8214280.46 | 828.09 | 260 | -73 | 281.35 | Complete |
| SADD063 | 807421.09 | 8214713.01 | 786.42 | 260 | -66 | 450.20 | Complete |
| SADD064 | 807816.90 | 8214083.13 | 831.30 | 260 | -60 | 450.10 | Complete |
| SADD065 | 807223.19 | 8214678.29 | 752.10 | 260 | -72 | 450.30 | Complete |
| SADD066 | 807691.10 | 8214264.77 | 827.26 | 260 | -77 | 270.70 | Complete |
| SADD067 | 807823.89 | 8214845.65 | 759.23 | 260 | -50 | 22.25 | Abandoned |
| SADD068 | 807894.94 | 8214297.30 | 827.82 | 260 | -71 | 270.10 | Complete |
| SADD069 | 807595.90 | 8214245.28 | 828.09 | 260 | -70 | 450.40 | Complete |
| SADD070 | 807614.59 | 8214348.47 | 815.58 | 260 | -62 | 454.70 | Complete |
| SADD071 | 807717.80 | 8214366.77 | 794.16 | 260 | -72 | 268.85 | Complete |
| SADD072 | 807613.98 | 8214652.55 | 790.98 | 260 | -70 | 454.75 | Complete |
| SADD073 | 807617.89 | 8214857.02 | 783.15 | 260 | -70 | 450.40 | Complete |
| SADD074 | 808108.60 | 8214997.50 | 749.15 | 260 | -84 | 450.35 | Complete |
| SADD075 | 808099.00 | 8214897.54 | 772.11 | 260 | -79 | 450.40 | Complete |
| SADD076 | 807516.68 | 8214630.87 | 802.84 | 260 | -70 | 448.90 | Complete |
| SADD077 | 807615.69 | 8214546.12 | 794.40 | 260 | -67 | 449.90 | Complete |
| SADD078 | 807614.98 | 8214446.36 | 800.50 | 260 | -70 | 450.40 | Complete |
| SADD079 | 807517.52 | 8214841.28 | 797.60 | 260 | -70 | 448.80 | Complete |
| SADD080 | 807443.97 | 8214218.96 | 826.75 | 260 | -70 | 459.35 | Complete |
| SADD081 | 807420.14 | 8214314.78 | 804.43 | 260 | -62 | 459.30 | Complete |
| SADD082 | 808094.70 | 8215100.55 | 719.73 | 260 | -72 | 450.35 | Complete |
| SADD083 | 807416.02 | 8214624.38 | 775.00 | 260 | -65 | 450.15 | Complete |
| SADD084 | 807518.11 | 8214530.09 | 797.87 | 260 | -65 | 451.55 | Complete |
| SADD085 | 807422.41 | 8214821.06 | 797.27 | 260 | -68 | 450.40 | Complete |
| SADD086 | 807518.196 | 8214429.9 | 803.61 | 260 | -68 | 451.65 | Complete |
| SADD087 | 807353.368 | 8214201.176 | 824.58 | 260 | -70 | 465.40 | Complete |
| SADD088 | 807518.094 | 8214330.269 | 818.12 | 260 | -62 | 450.20 | Complete |
| SADD089 | 807320.784 | 8214297.361 | 797.65 | 260 | -64 | 448.85 | Complete |
| SADD090 | 807318.357 | 8214593.277 | 752.99 | 260 | -62 | 364.80 | Complete |

| | | | | | | | |
|---------|------------|-------------|--------|-----|-----|--------|----------|
| SADD091 | 807420.466 | 8214507.991 | 772.65 | 260 | -60 | 334.90 | Complete |
| SADD092 | 807294.819 | 8214385.411 | 783.45 | 260 | -65 | 385.90 | Complete |
| SADD093 | 807416.104 | 8214411.8 | 790.63 | 260 | -65 | 354.80 | Complete |
| SADD094 | 807237.399 | 8214181.916 | 823.44 | 260 | -72 | 298.80 | Complete |
| SADD095 | 807134.481 | 8214165.086 | 822.42 | 260 | -71 | 351.40 | Complete |
| SADD096 | 807216.45 | 8214278.29 | 809.85 | 260 | -65 | 322.80 | Complete |
| SADD097 | 807908.99 | 8214765.27 | 768.89 | 260 | -70 | 150.40 | Complete |
| SADD098 | 807080.26 | 8214347.22 | 792.63 | 260 | -66 | 304.85 | Complete |
| SADD099 | 807097.99 | 8214258.93 | 806.69 | 260 | -65 | 300.30 | Complete |
| SADD100 | 807292.06 | 8214489.87 | 765.48 | 260 | -61 | 316.75 | Complete |
| SADD101 | 807034.05 | 8214144.62 | 821.99 | 260 | -71 | 309.30 | Complete |
| SADD102 | 807320.71 | 8214812.63 | 775.52 | 260 | -65 | 256.70 | Complete |
| SADD103 | 807825.14 | 8214716.05 | 763.69 | 260 | -70 | 114.40 | Complete |
| SADD104 | 807192.56 | 8214574.09 | 777.19 | 260 | -66 | 309.40 | Complete |
| SADD105 | 807188.31 | 8214373.72 | 790.73 | 260 | -65 | 316.80 | Complete |
| SADD106 | 806995.71 | 8214241.98 | 816.55 | 260 | -65 | 324.30 | Complete |
| SADD107 | 807861.18 | 8214644.33 | 763.91 | 260 | -70 | 457.90 | Complete |
| SADD108 | 807170.06 | 8214469.62 | 776.08 | 260 | -66 | 300.20 | Complete |
| SADD109 | 806925.58 | 8214133.02 | 822.66 | 260 | -70 | 229.70 | Complete |
| SADD110 | 807242.78 | 8214804.45 | 759.25 | 250 | -58 | 237.30 | Complete |
| SADD111 | 807075.96 | 8214562.03 | 766.32 | 260 | -66 | 241.70 | Complete |
| SADD112 | 806976.73 | 8214340.54 | 800.93 | 260 | -64 | 313.82 | Complete |
| SADD113 | 806825.53 | 8214114.96 | 818.80 | 260 | -70 | 45.35 | Complete |
| SADD114 | 806880.02 | 8214216.37 | 815.59 | 260 | -67 | 231.11 | Complete |
| SADD115 | 807058.89 | 8214450.86 | 784.69 | 260 | -69 | 280.78 | Complete |
| SADD116 | 807853.20 | 8214910.54 | 752.79 | 260 | -72 | 237.41 | Complete |
| SADD117 | 806952.51 | 8214431.89 | 783.97 | 260 | -69 | 249.45 | Complete |
| SADD118 | 807123.87 | 8214660.96 | 767.46 | 260 | -72 | 223.83 | Complete |
| SADD119 | 807922.91 | 8214922.70 | 744.92 | 260 | -70 | 235.80 | Complete |
| SADD120 | 806777.63 | 8214204.87 | 810.21 | 260 | -65 | 280.70 | Complete |
| SADD121 | 806874.05 | 8214320.37 | 793.36 | 260 | -66 | 282.42 | Complete |
| SADD122 | 806825.53 | 8214114.96 | 818.80 | 260 | -70 | 86.80 | Complete |
| SADD123 | 806767.19 | 8214297.06 | 797.19 | 260 | -66 | 301.70 | Complete |
| SADD124 | 806710.69 | 8214099.51 | 786.20 | 260 | -70 | 171.25 | Complete |
| SADD125 | 807986.23 | 8214930.23 | 766.41 | 260 | -70 | 261.15 | Complete |
| SADD126 | 806654.05 | 8214180.67 | 777.51 | 260 | -65 | 180.15 | Complete |
| SADD127 | 807935.33 | 8215029.40 | 737.12 | 260 | -65 | 252.08 | Complete |
| SADD128 | 806597.75 | 8214072.14 | 780.43 | 260 | -75 | 169.80 | Complete |
| SADD129 | 806549.77 | 8214167.18 | 771.90 | 255 | -65 | 130.60 | Complete |
| SADD130 | 806639.41 | 8214280.54 | 777.98 | 260 | -69 | 181.85 | Complete |
| SADD131 | 806525.75 | 8214265.86 | 757.27 | 260 | -70 | 141.40 | Complete |
| SADD132 | 806536.76 | 8213552.59 | 824.89 | 260 | -65 | 562.30 | Complete |
| SADD133 | 806826.32 | 8214115.00 | 818.86 | 260 | -70 | 201.28 | Complete |
| SADD134 | 808067.77 | 8215049.74 | 745.29 | 260 | -65 | 317.08 | Complete |
| SADD135 | 806539.68 | 8214062.84 | 774.45 | 260 | -55 | 109.85 | Complete |

TABLE 3
COLINA MINERAL RESOURCE PROGRAM
ALL SIGNIFICANT DIAMOND DRILL INTERSECTIONS

| Hole ID | From (m) | To (m) | Interval (m) | Li ₂ O (%) |
|-------------------|---|---------------|--------------|-----------------------|
| SADD001 | 24.22 | 26.22 | 2.00 | 0.56 |
| SADD001 | 83.82 | 88.13 | 4.31 | 2.22 |
| SADD002 | 48.50 | 54.95 | 6.45 | 0.78 |
| SADD002 | 111.30 | 119.43 | 8.13 | 2.00 |
| <i>Including:</i> | <i>112.30</i> | <i>113.30</i> | <i>1.00</i> | <i>3.22</i> |
| SADD002 | 115.30 | 118.30 | 3.00 | 2.20 |
| SADD003 | 65.65 | 82.70 | 17.05 | 0.95 |
| <i>Including:</i> | <i>69.65</i> | <i>73.65</i> | <i>4.00</i> | <i>1.96</i> |
| SADD003 | 98.35 | 103.50 | 5.15 | 1.31 |
| <i>Including:</i> | <i>98.35</i> | <i>100.25</i> | <i>1.90</i> | <i>2.13</i> |
| SADD004 | 119.80 | 137.18 | 17.38 | 1.46 |
| <i>Including:</i> | <i>120.95</i> | <i>131.15</i> | <i>10.20</i> | <i>2.05</i> |
| <i>Including:</i> | <i>120.95</i> | <i>124.00</i> | <i>3.05</i> | <i>2.26</i> |
| SADD004 | 127.00 | 129.00 | 2.00 | 3.07 |
| SADD005 | 125.40 | 129.65 | 4.25 | 1.32 |
| <i>Including:</i> | <i>127.55</i> | <i>128.60</i> | <i>1.05</i> | <i>2.65</i> |
| SADD005 | 159.10 | 163.10 | 4.00 | 1.36 |
| <i>Including:</i> | <i>161.10</i> | <i>162.10</i> | <i>1.00</i> | <i>1.92</i> |
| SADD006 | 208.80 | 229.90 | 21.10 | 1.26 |
| <i>Including:</i> | <i>210.90</i> | <i>224.90</i> | <i>14.00</i> | <i>1.69</i> |
| <i>Including:</i> | <i>214.90</i> | <i>217.90</i> | <i>3.00</i> | <i>2.28</i> |
| SADD007 | <i>No Significant results¹</i> | | | |
| SADD008 | <i>No Significant results¹</i> | | | |
| SADD009 | <i>No Significant results¹</i> | | | |
| SADD010 | <i>No Significant results¹</i> | | | |
| SADD011 | 49.90 | 51.00 | 1.10 | 1.15 |
| SADD011 | 60.82 | 63.95 | 3.13 | 1.48 |
| <i>including:</i> | <i>60.82</i> | <i>61.95</i> | <i>1.13</i> | <i>1.73</i> |
| SADD012 | 64.80 | 69.03 | 4.23 | 1.52 |
| <i>Including:</i> | <i>64.80</i> | <i>66.90</i> | <i>2.10</i> | <i>2.27</i> |
| SADD012 | 97.95 | 102.50 | 4.55 | 0.98 |
| <i>Including:</i> | <i>98.86</i> | <i>101.59</i> | <i>2.73</i> | <i>1.32</i> |
| SADD012 | 110.05 | 111.60 | 1.55 | 1.37 |
| <i>Including:</i> | <i>110.05</i> | <i>110.85</i> | <i>0.80</i> | <i>2.12</i> |
| SADD013 | 36.75 | 41.10 | 4.35 | 1.76 |
| <i>Including:</i> | <i>36.75</i> | <i>40.05</i> | <i>3.30</i> | <i>2.08</i> |
| SADD014 | <i>No Significant results¹</i> | | | |
| SADD015 | 97.87 | 100.87 | 3.00 | 0.53 |
| SADD015 | 183.53 | 184.50 | 0.97 | 1.57 |
| SADD015 | 189.78 | 192.88 | 3.10 | 0.70 |

| | | | | |
|-------------------|---------------|---------------|--------------|-------------|
| SADD016 | 94.14 | 119.38 | 25.24 | 1.25 |
| <i>Including:</i> | <i>97.00</i> | <i>104.00</i> | <i>7.00</i> | <i>1.52</i> |
| <i>And:</i> | <i>109.00</i> | <i>118.19</i> | <i>9.19</i> | <i>1.51</i> |
| SADD017 | 133.00 | 141.87 | 8.87 | 1.09 |
| <i>Including:</i> | <i>137.00</i> | <i>138.00</i> | <i>1.00</i> | <i>2.02</i> |
| <i>And:</i> | <i>144.00</i> | <i>145.00</i> | <i>1.00</i> | <i>1.85</i> |
| SADD017 | 173.29 | 187.00 | 13.86 | 1.33 |
| <i>Including:</i> | <i>178.00</i> | <i>185.00</i> | <i>7.00</i> | <i>1.93</i> |
| SADD018 | 133.84 | 143.00 | 9.16 | 1.68 |
| <i>Including:</i> | <i>135.00</i> | <i>141.00</i> | <i>6.00</i> | <i>2.16</i> |
| <i>Including:</i> | <i>137.00</i> | <i>138.00</i> | <i>1.00</i> | <i>3.52</i> |
| SADD018 | 146.00 | 147.00 | 1.00 | 0.75 |
| SADD018 | 149.00 | 150.00 | 1.00 | 1.30 |
| SADD018 | 189.00 | 205.00 | 16.00 | 1.29 |
| <i>Including:</i> | <i>190.00</i> | <i>198.00</i> | <i>8.00</i> | <i>1.98</i> |
| <i>Including:</i> | <i>190.00</i> | <i>191.00</i> | <i>1.00</i> | <i>3.06</i> |
| <i>And:</i> | <i>196.00</i> | <i>197.00</i> | <i>1.00</i> | <i>4.22</i> |
| SADD019 | 117.12 | 119.73 | 2.61 | 0.80 |
| SADD019 | 140.94 | 146.78 | 5.84 | 1.88 |
| SADD019 | 164.57 | 166.15 | 1.58 | 0.77 |
| SADD019 | 185.13 | 187.44 | 2.31 | 2.02 |
| <i>Including:</i> | <i>186.00</i> | <i>187.44</i> | <i>1.44</i> | <i>2.66</i> |
| SADD019 | 206.24 | 218.20 | 11.96 | 1.62 |
| <i>Including:</i> | <i>210.00</i> | <i>218.20</i> | <i>8.20</i> | <i>1.82</i> |
| SADD019 | 237.30 | 246.73 | 9.43 | 1.56 |
| <i>Including:</i> | <i>240.00</i> | <i>244.00</i> | <i>4.00</i> | <i>2.42</i> |
| SADD020 | 94.05 | 95.10 | 1.05 | 0.74 |
| SADD020 | 97.97 | 100.00 | 2.03 | 0.98 |
| SADD020 | 120.33 | 122.68 | 2.35 | 3.57 |
| SADD020 | 143.77 | 151.35 | 7.58 | 1.45 |
| <i>Including:</i> | <i>144.40</i> | <i>146.00</i> | <i>1.60</i> | <i>2.45</i> |
| SADD020 | 207.08 | 214.54 | 7.46 | 1.19 |
| SADD021 | 120.60 | 141.00 | 20.40 | 0.97 |
| <i>Including:</i> | <i>120.60</i> | <i>131.00</i> | <i>10.40</i> | <i>1.25</i> |
| SADD021 | 188.93 | 194.74 | 5.81 | 1.53 |
| SADD022 | 71.00 | 91.09 | 20.09 | 1.35 |
| <i>Including:</i> | <i>73.00</i> | <i>75.00</i> | <i>2.00</i> | <i>2.17</i> |
| <i>And:</i> | <i>80.00</i> | <i>82.00</i> | <i>2.00</i> | <i>2.32</i> |
| SADD023 | 94.00 | 120.88 | 26.88 | 1.40 |
| <i>Including:</i> | <i>97.00</i> | <i>115.00</i> | <i>18.00</i> | <i>1.61</i> |
| SADD024 | 186.00 | 196.00 | 10.00 | 1.05 |
| <i>Including:</i> | <i>190.00</i> | <i>195.00</i> | <i>5.00</i> | <i>1.61</i> |
| SADD024 | 293.00 | 295.00 | 2.00 | 0.64 |
| SADD025 | 190.00 | 192.00 | 2.00 | 0.89 |
| SADD026 | 307.00 | 335.80 | 28.80 | 1.16 |

| | | | | |
|-------------------|---|--------|-------|------|
| <i>Including:</i> | 321.00 | 335.80 | 14.80 | 1.51 |
| SADD027 | 197.80 | 199.95 | 2.15 | 0.67 |
| SADD027 | 219.64 | 221.30 | 2.51 | 0.94 |
| SADD028 | <i>No Significant results¹</i> | | | |
| SADD029 | 183.55 | 187.85 | 4.30 | 1.08 |
| SADD030 | 149.00 | 161.00 | 12.00 | 1.82 |
| <i>Including:</i> | 149.00 | 157.00 | 8.00 | 2.31 |
| SADD030 | 209.00 | 229.12 | 20.19 | 1.45 |
| <i>Including:</i> | 213.00 | 223.00 | 10.00 | 1.88 |
| SADD031 | 201.00 | 207.00 | 7.00 | 1.13 |
| <i>Including:</i> | 201.00 | 203.00 | 2.00 | 2.20 |
| SADD031 | 286.30 | 292.45 | 6.15 | 1.56 |
| <i>Including:</i> | 289.30 | 292.45 | 3.15 | 2.12 |
| SADD031 | 306.00 | 314.45 | 8.45 | 3.57 |
| <i>Including:</i> | 309.10 | 313.27 | 4.17 | 5.79 |
| SADD032 | <i>No Significant results¹</i> | | | |
| SADD033 | 210.53 | 122.31 | 1.78 | 1.33 |
| SADD033 | 197.78 | 200.00 | 2.22 | 0.92 |
| SADD033 | 210.44 | 213.15 | 2.71 | 1.11 |
| SADD033 | 259.78 | 262.00 | 2.22 | 1.05 |
| SADD033 | 275.38 | 277.05 | 1.67 | 1.36 |
| SADD033 | 321.15 | 339.86 | 18.71 | 1.32 |
| <i>Including:</i> | 322.00 | 326.00 | 4.00 | 1.94 |
| <i>And:</i> | 334.00 | 338.00 | 4.00 | 1.58 |
| SADD034 | <i>No Significant results¹</i> | | | |
| SADD035 | <i>No Significant results¹</i> | | | |
| SADD036 | 179.30 | 185.00 | 5.70 | 0.87 |
| <i>Including:</i> | 181.00 | 183.00 | 2.00 | 1.66 |
| SADD036 | 356.00 | 357.00 | 1.00 | 1.08 |
| SADD037 | 76.54 | 78.22 | 1.68 | 0.61 |
| SADD037 | 131.90 | 132.55 | 0.65 | 1.13 |
| SADD037 | 195.11 | 198.19 | 3.08 | 1.22 |
| <i>Including:</i> | 196.00 | 198.19 | 2.19 | 1.56 |
| SADD038 | 76.50 | 81.00 | 4.50 | 1.47 |
| <i>Including:</i> | 77.00 | 79.00 | 2.00 | 2.54 |
| SADD038 | 92.31 | 103.22 | 10.91 | 1.52 |
| <i>Including:</i> | 93.00 | 98.00 | 5.00 | 2.01 |
| SADD038 | 117.87 | 119.43 | 1.56 | 0.97 |
| SADD039 | 129.76 | 137.95 | 8.19 | 1.61 |
| <i>Including:</i> | 133.00 | 137.00 | 4.00 | 2.21 |
| SADD039 | 199.00 | 201.00 | 2.00 | 1.67 |
| SADD039 | 245.00 | 270.00 | 25.00 | 1.47 |
| <i>Including:</i> | 255.00 | 265.00 | 10.00 | 1.78 |
| SADD040 | 91.50 | 92.18 | 0.68 | 1.03 |
| SADD040 | 99.28 | 101.05 | 1.77 | 1.14 |

| | | | | |
|-------------------|---|---------------|--------------|-------------|
| SADD040 | 148.21 | 155.62 | 7.41 | 1.61 |
| <i>Including:</i> | <i>153.00</i> | <i>155.62</i> | <i>2.62</i> | <i>2.37</i> |
| SADD040 | 198.64 | 205.78 | 7.14 | 1.61 |
| SADD040 | 231.74 | 238.74 | 7.00 | 1.21 |
| <i>Including:</i> | <i>233.74</i> | <i>235.74</i> | <i>2.00</i> | <i>2.00</i> |
| SADD042 | 302.30 | 311.00 | 8.70 | 2.16 |
| <i>Including:</i> | <i>302.30</i> | <i>308.00</i> | <i>5.70</i> | <i>2.66</i> |
| SADD043 | 230.55 | 231.51 | 0.96 | 1.87 |
| SADD043 | 275.00 | 283.18 | 8.18 | 0.93 |
| <i>Including:</i> | <i>280.00</i> | <i>282.00</i> | <i>2.00</i> | <i>1.79</i> |
| SADD043 | 285.13 | 285.86 | 0.73 | 1.76 |
| SADD044 | 75.50 | 76.30 | 0.80 | 1.17 |
| SADD045 | 67.00 | 69.00 | 2.00 | 1.89 |
| SADD045 | 84.27 | 88.29 | 4.02 | 1.73 |
| <i>Including:</i> | <i>84.27</i> | <i>87.30</i> | <i>3.03</i> | <i>2.03</i> |
| SADD045 | 112.42 | 114.71 | 2.29 | 0.36 |
| SADD045 | 214.00 | 215.19 | 1.19 | 0.74 |
| SADD045 | 297.70 | 299.70 | 2.00 | 0.51 |
| SADD047 | 31.05 | 36.85 | 5.80 | 0.54 |
| SADD047 | 68.43 | 78.66 | 10.23 | 1.59 |
| SADD047 | 69.20 | 75.00 | 5.80 | 1.82 |
| SADD048 | <i>No Significant results¹</i> | | | |
| SADD049 | <i>No Significant results¹</i> | | | |
| SADD050 | 28.64 | 30.60 | 1.96 | 1.69 |
| SADD051 | <i>No Significant results*</i> | | | |
| SADD052 | 83.80 | 86.18 | 1.38 | 1.27 |
| SADD053 | 86.64 | 87.50 | 0.86 | 0.50 |
| SADD053 | 193.63 | 196.63 | 3.00 | 1.49 |
| SADD053 | 289.58 | 303.58 | 14.00 | 1.35 |
| <i>Including:</i> | <i>289.58</i> | <i>294.58</i> | <i>5.00</i> | <i>1.84</i> |
| SADD054 | <i>No Significant results¹</i> | | | |
| SADD055 | 47.24 | 48.27 | 1.00 | 0.71 |
| SADD055 | 196.57 | 197.94 | 1.37 | 0.84 |
| SADD055 | 200.19 | 213.92 | 13.73 | 1.38 |
| <i>Including:</i> | <i>202.00</i> | <i>212.00</i> | <i>10.00</i> | <i>1.79</i> |
| SADD055 | 216.62 | 217.40 | 0.78 | 1.85 |
| SADD055 | 223.97 | 229.23 | 5.26 | 1.05 |
| SADD055 | 234.91 | 238.91 | 3.99 | 1.81 |
| SADD055 | 306.69 | 322.77 | 16.08 | 1.07 |
| SADD055 | 322.15 | 343.00 | 10.85 | 1.96 |
| <i>Including:</i> | <i>333.00</i> | <i>338.00</i> | <i>5.00</i> | <i>2.44</i> |
| SADD055 | 360.17 | 371.33 | 11.16 | 1.61 |
| <i>Including:</i> | <i>360.17</i> | <i>363.00</i> | <i>2.83</i> | <i>2.12</i> |
| <i>and:</i> | <i>367.00</i> | <i>370.00</i> | <i>3.00</i> | <i>2.05</i> |
| SADD055 | 393.60 | 409.60 | 16.00 | 1.61 |

| | | | | |
|-------------------|---|--------|-------|------|
| <i>Including:</i> | 395.60 | 402.60 | 7.00 | 1.91 |
| SADD055 | 434.78 | 437.03 | 2.25 | 1.21 |
| SADD055 | 468.08 | 470.10 | 1.00 | 0.84 |
| SADD056 | <i>No Significant results¹</i> | | | |
| SADD057 | 105.00 | 106.70 | 1.70 | 1.34 |
| SADD057 | 136.99 | 157.16 | 20.17 | 1.66 |
| SADD057 | 149.00 | 156.00 | 7.00 | 2.14 |
| SADD058 | <i>No Significant results¹</i> | | | |
| SADD059 | 81.41 | 88.38 | 6.97 | 1.96 |
| SADD059 | 109.90 | 124.60 | 14.70 | 1.27 |
| <i>Including:</i> | 81.41 | 88.38 | 6.97 | 1.96 |
| SADD059 | 195.31 | 203.49 | 8.18 | 1.28 |
| SADD060 | 84.75 | 87.04 | 2.29 | 1.71 |
| SADD060 | 182.70 | 184.58 | 1.88 | 1.85 |
| SADD060 | 203.69 | 205.65 | 1.96 | 0.83 |
| SADD060 | 228.00 | 230.84 | 2.84 | 0.92 |
| SADD060 | 247.40 | 250.29 | 2.89 | 1.33 |
| SADD060 | 252.00 | 253.55 | 1.55 | 0.56 |
| SADD060 | 350.09 | 366.05 | 15.96 | 1.56 |
| SADD060 | 370.62 | 372.03 | 1.41 | 1.64 |
| SADD060 | 384.42 | 538.42 | 2.00 | 1.04 |
| SADD061 | 119.24 | 121.00 | 1.76 | 0.92 |
| SADD061 | 122.00 | 125.00 | 3.00 | 0.83 |
| SADD061 | 126.00 | 128.00 | 2.00 | 0.74 |
| SADD061 | 159.00 | 179.70 | 20.70 | 1.51 |
| <i>Including:</i> | 163.00 | 165.00 | 2.00 | 1.96 |
| <i>And:</i> | 168.00 | 173.00 | 5.00 | 2.27 |
| <i>And:</i> | 160.00 | 173.00 | 13.00 | 1.70 |
| SADD061 | 203.00 | 206.00 | 3.00 | 1.30 |
| SADD062 | 149.51 | 159.51 | 10.00 | 1.13 |
| <i>Including:</i> | 157.51 | 159.51 | 2.00 | 1.70 |
| <i>And:</i> | 150.51 | 156.51 | 6.00 | 1.20 |
| SADD063 | 125.12 | 129.15 | 4.03 | 1.60 |
| SADD063 | 130.26 | 131.60 | 1.34 | 1.15 |
| SADD063 | 189.65 | 190.35 | 0.70 | 1.86 |
| SADD063 | 199.12 | 200.21 | 1.09 | 0.56 |
| SADD063 | 267.37 | 274.16 | 6.79 | 1.52 |
| <i>Including:</i> | 267.37 | 270.00 | 2.63 | 2.12 |
| SADD064 | <i>No Significant results¹</i> | | | |
| SADD065 | 184.00 | 187.00 | 3.00 | 1.05 |
| SADD065 | 368.00 | 370.20 | 2.20 | 0.83 |
| SADD066 | <i>No Significant results¹</i> | | | |
| SADD067 | <i>Hole Abandoned - Not Sampled</i> | | | |
| SADD068 | 248.47 | 253.49 | 5.02 | 2.34 |
| SADD069 | 207.00 | 211.00 | 4.00 | 1.46 |

| | | | | |
|-------------------|---------------|---------------|--------------|-------------|
| SADD070 | 139.00 | 141.00 | 2.00 | 0.77 |
| SADD070 | 192.97 | 198.00 | 5.03 | 1.64 |
| SADD070 | 292.03 | 297.55 | 5.52 | 1.50 |
| SADD070 | 323.57 | 340.00 | 16.43 | 1.69 |
| <i>Including:</i> | <i>324.72</i> | <i>333.00</i> | <i>8.28</i> | <i>2.14</i> |
| SADD070 | 356.91 | 375.80 | 18.89 | 1.56 |
| <i>Including:</i> | <i>362.00</i> | <i>373.00</i> | <i>11.00</i> | <i>1.86</i> |
| <i>And:</i> | <i>362.00</i> | <i>365.00</i> | <i>3.00</i> | <i>2.31</i> |
| SADD071 | 221.60 | 232.00 | 10.40 | 1.01 |
| <i>Including:</i> | <i>224.00</i> | <i>231.00</i> | <i>7.00</i> | <i>1.31</i> |
| SADD072 | 168.34 | 170.92 | 2.58 | 1.36 |
| SADD072 | 174.87 | 185.57 | 10.70 | 1.38 |
| <i>Including:</i> | <i>174.87</i> | <i>176.87</i> | <i>2.00</i> | <i>1.73</i> |
| <i>And:</i> | <i>178.87</i> | <i>180.87</i> | <i>2.00</i> | <i>1.81</i> |
| SADD072 | 231.22 | 232.50 | 1.28 | 0.66 |
| SADD072 | 238.76 | 241.31 | 2.55 | 1.03 |
| SADD072 | 247.81 | 249.33 | 1.52 | 0.81 |
| SADD072 | 295.00 | 298.12 | 3.12 | 1.56 |
| SADD072 | 333.82 | 360.69 | 26.87 | 1.62 |
| <i>Including:</i> | <i>335.00</i> | <i>343.00</i> | <i>8.00</i> | <i>2.27</i> |
| <i>And:</i> | <i>335.00</i> | <i>358.00</i> | <i>23.00</i> | <i>1.78</i> |
| SADD072 | 443.00 | 444.00 | 1.00 | 0.81 |
| SADD073 | 278.90 | 288.65 | 9.75 | 1.51 |
| <i>Including:</i> | <i>283.00</i> | <i>288.65</i> | <i>5.65</i> | <i>1.81</i> |
| SADD073 | 290.80 | 292.10 | 1.30 | 0.79 |
| SADD073 | 322.11 | 324.40 | 2.29 | 1.07 |
| SADD073 | 350.00 | 355.82 | 5.82 | 1.29 |
| SADD073 | 382.00 | 388.66 | 6.66 | 1.03 |
| SADD074 | 137.48 | 140.53 | 3.05 | 2.11 |
| SADD074 | 283.13 | 312.00 | 28.87 | 1.29 |
| <i>Including:</i> | <i>307.00</i> | <i>311.00</i> | <i>4.00</i> | <i>1.66</i> |
| SADD075 | 159.44 | 172.52 | 13.08 | 1.20 |
| <i>Including:</i> | <i>159.44</i> | <i>163.00</i> | <i>3.56</i> | <i>1.48</i> |
| <i>And:</i> | <i>166.00</i> | <i>171.00</i> | <i>5.00</i> | <i>1.35</i> |
| SADD075 | 336.40 | 349.67 | 13.27 | 1.65 |
| <i>Including:</i> | <i>337.40</i> | <i>342.40</i> | <i>5.00</i> | <i>2.74</i> |
| SADD075 | 360.50 | 370.86 | 10.36 | 1.07 |
| <i>Including:</i> | <i>360.50</i> | <i>365.50</i> | <i>5.00</i> | <i>1.50</i> |
| SADD076 | 129.71 | 130.58 | 0.87 | 0.99 |
| SADD076 | 132.26 | 139.91 | 7.65 | 1.42 |
| <i>Including:</i> | <i>135.00</i> | <i>138.00</i> | <i>3.00</i> | <i>1.79</i> |
| SADD076 | 161.13 | 163.14 | 2.01 | 1.17 |
| SADD076 | 166.23 | 167.41 | 1.18 | 0.97 |
| SADD076 | 178.45 | 185.58 | 7.13 | 1.43 |
| <i>Including:</i> | <i>179.25</i> | <i>183.00</i> | <i>3.75</i> | <i>1.71</i> |

| | | | | |
|-------------------|---------------|---------------|--------------|-------------|
| SADD076 | 200.75 | 202.63 | 1.88 | 0.99 |
| SADD076 | 255.07 | 263.00 | 7.93 | 1.18 |
| <i>Including:</i> | <i>258.00</i> | <i>261.00</i> | <i>3.00</i> | <i>1.56</i> |
| SADD076 | 321.53 | 325.91 | 4.38 | 1.12 |
| <i>Including:</i> | <i>323.20</i> | <i>325.91</i> | <i>2.71</i> | <i>1.50</i> |
| SADD076 | 334.00 | 350.53 | 16.53 | 1.40 |
| <i>Including:</i> | <i>334.00</i> | <i>337.00</i> | <i>3.00</i> | <i>2.37</i> |
| <i>And:</i> | <i>334.00</i> | <i>340.00</i> | <i>6.00</i> | <i>1.90</i> |
| <i>And:</i> | <i>334.00</i> | <i>346.00</i> | <i>12.00</i> | <i>1.73</i> |
| SADD076 | 424.08 | 424.88 | 0.80 | 0.54 |
| SADD077 | 132.56 | 138.04 | 5.48 | 1.35 |
| <i>Including:</i> | <i>132.56</i> | <i>135.95</i> | <i>3.39</i> | <i>1.61</i> |
| SADD077 | 158.05 | 172.71 | 14.66 | 1.52 |
| <i>Including:</i> | <i>158.05</i> | <i>166.00</i> | <i>7.95</i> | <i>1.70</i> |
| SADD077 | 186.40 | 196.06 | 9.66 | 1.10 |
| SADD077 | 198.43 | 201.00 | 2.57 | 0.87 |
| SADD077 | 257.37 | 258.82 | 1.45 | 0.71 |
| SADD077 | 261.35 | 265.75 | 4.40 | 1.69 |
| SADD077 | 319.53 | 352.60 | 33.07 | 1.83 |
| <i>Including:</i> | <i>319.53</i> | <i>333.00</i> | <i>13.47</i> | <i>2.65</i> |
| <i>And:</i> | <i>338.00</i> | <i>341.00</i> | <i>3.00</i> | <i>2.28</i> |
| SADD077 | 372.90 | 382.64 | 9.74 | 1.37 |
| SADD078 | 108.19 | 111.00 | 2.81 | 2.01 |
| SADD078 | 137.00 | 139.48 | 2.48 | 0.40 |
| SADD078 | 142.85 | 143.67 | 0.82 | 0.46 |
| SADD078 | 153.55 | 161.96 | 8.41 | 1.19 |
| <i>Including:</i> | <i>153.55</i> | <i>156.00</i> | <i>2.45</i> | <i>1.51</i> |
| SADD078 | 169.70 | 177.19 | 7.49 | 1.19 |
| SADD078 | 181.00 | 182.56 | 1.56 | 1.26 |
| SADD078 | 243.05 | 248.90 | 5.85 | 1.77 |
| SADD078 | 261.56 | 264.76 | 3.20 | 1.73 |
| SADD078 | 275.00 | 279.68 | 4.68 | 1.24 |
| SADD078 | 323.00 | 337.00 | 14.00 | 1.55 |
| <i>Including:</i> | <i>323.00</i> | <i>333.00</i> | <i>10.00</i> | <i>1.75</i> |
| <i>And:</i> | <i>323.00</i> | <i>328.00</i> | <i>5.00</i> | <i>1.99</i> |
| SADD078 | 366.00 | 373.80 | 7.80 | 1.37 |
| <i>Including:</i> | <i>370.00</i> | <i>373.00</i> | <i>3.00</i> | <i>2.00</i> |
| SADD079 | 222.68 | 234.45 | 11.77 | 1.31 |
| <i>Including:</i> | <i>223.80</i> | <i>231.00</i> | <i>7.20</i> | <i>1.84</i> |
| SADD079 | 238.20 | 239.52 | 1.32 | 0.94 |
| SADD080 | 150.93 | 154.00 | 3.07 | 1.93 |
| SADD080 | 235.00 | 239.00 | 4.00 | 0.87 |
| SADD080 | 274.46 | 287.05 | 12.59 | 1.46 |
| <i>Including:</i> | <i>277.20</i> | <i>282.00</i> | <i>4.80</i> | <i>1.56</i> |
| SADD081 | 130.40 | 132.22 | 1.82 | 0.86 |

For personal use only

| | | | | |
|-------------------|---------------|---------------|--------------|-------------|
| SADD081 | 163.95 | 164.98 | 1.03 | 1.12 |
| SADD081 | 197.38 | 198.30 | 0.92 | 0.94 |
| SADD081 | 202.00 | 202.90 | 0.90 | 0.53 |
| SADD081 | 224.77 | 227.80 | 3.03 | 1.16 |
| SADD081 | 242.48 | 259.40 | 16.92 | 1.36 |
| <i>Including:</i> | <i>250.00</i> | <i>257.18</i> | <i>7.18</i> | <i>1.69</i> |
| <i>And:</i> | <i>242.48</i> | <i>244.15</i> | <i>1.67</i> | <i>2.02</i> |
| SADD081 | 429.00 | 438.17 | 9.17 | 1.63 |
| <i>Including:</i> | <i>431.00</i> | <i>436.00</i> | <i>5.00</i> | <i>1.92</i> |
| SADD082 | 122.15 | 123.35 | 1.20 | 0.63 |
| SADD082 | 147.65 | 150.00 | 2.35 | 0.53 |
| SADD082 | 151.00 | 152.00 | 1.00 | 0.47 |
| SADD082 | 162.35 | 167.80 | 5.45 | 0.74 |
| SADD082 | 237.00 | 264.15 | 27.15 | 1.45 |
| <i>Including:</i> | <i>245.00</i> | <i>259.00</i> | <i>14.00</i> | <i>1.61</i> |
| SADD083 | 51.50 | 52.00 | 0.50 | 0.70 |
| SADD083 | 53.75 | 55.50 | 1.75 | 0.53 |
| SADD083 | 81.66 | 82.80 | 1.14 | 1.32 |
| SADD083 | 91.03 | 93.17 | 2.14 | 1.13 |
| SADD083 | 93.36 | 93.84 | 0.48 | 0.63 |
| SADD083 | 164.55 | 168.02 | 3.47 | 1.54 |
| SADD083 | 223.54 | 228.64 | 5.10 | 1.34 |
| SADD083 | 305.31 | 308.00 | 2.69 | 0.81 |
| SADD084 | 106.29 | 108.03 | 1.74 | 0.88 |
| SADD084 | 110.27 | 118.38 | 8.11 | 1.42 |
| <i>Including:</i> | <i>110.27</i> | <i>113.00</i> | <i>2.73</i> | <i>1.77</i> |
| SADD084 | 132.29 | 134.49 | 2.20 | 1.12 |
| SADD084 | 135.07 | 136.55 | 1.48 | 0.80 |
| SADD084 | 150.00 | 151.15 | 1.15 | 0.56 |
| SADD084 | 213.12 | 215.49 | 2.37 | 1.55 |
| SADD084 | 244.00 | 245.00 | 1.00 | 0.94 |
| SADD084 | 270.61 | 272.45 | 1.84 | 1.19 |
| SADD084 | 281.43 | 285.93 | 4.50 | 1.35 |
| SADD084 | 321.11 | 338.13 | 17.02 | 1.83 |
| <i>Including:</i> | <i>324.00</i> | <i>334.00</i> | <i>10.00</i> | <i>2.10</i> |
| <i>And:</i> | <i>324.00</i> | <i>329.00</i> | <i>5.00</i> | <i>2.41</i> |
| SADD084 | 346.43 | 351.55 | 5.12 | 1.31 |
| SADD085 | 166.62 | 173.00 | 6.38 | 1.49 |
| <i>Including:</i> | <i>170.00</i> | <i>172.00</i> | <i>2.00</i> | <i>2.28</i> |
| SADD085 | 185.48 | 187.32 | 1.84 | 0.80 |
| SADD085 | 243.30 | 243.78 | 0.48 | 0.68 |
| SADD085 | 248.65 | 253.75 | 5.10 | 1.58 |
| <i>Including:</i> | <i>250.75</i> | <i>252.75</i> | <i>2.00</i> | <i>2.42</i> |
| SADD086 | 98.00 | 100.96 | 2.96 | 0.82 |
| SADD086 | 101.94 | 103.00 | 1.06 | 2.01 |

| | | | | |
|-------------------|---------------|---------------|-------------|-------------|
| SADD086 | 114.86 | 115.50 | 0.64 | 0.55 |
| SADD086 | 138.35 | 139.54 | 1.19 | 1.60 |
| SADD086 | 140.70 | 141.40 | 0.70 | 0.81 |
| SADD086 | 143.08 | 148.50 | 5.42 | 1.54 |
| <i>Including:</i> | <i>144.00</i> | <i>146.83</i> | <i>2.83</i> | <i>1.96</i> |
| SADD086 | 193.91 | 194.46 | 0.55 | 0.90 |
| SADD086 | 204.72 | 205.85 | 1.13 | 0.47 |
| SADD086 | 239.85 | 246.59 | 6.74 | 1.59 |
| SADD086 | 272.60 | 275.60 | 3.00 | 0.62 |
| SADD086 | 281.79 | 290.07 | 8.28 | 1.86 |
| <i>Including:</i> | <i>282.90</i> | <i>289.00</i> | <i>6.10</i> | <i>2.12</i> |
| SADD086 | 306.07 | 319.59 | 13.52 | 1.25 |
| <i>Including:</i> | <i>307.00</i> | <i>313.00</i> | <i>6.00</i> | <i>1.70</i> |
| SADD086 | 323.60 | 324.41 | 0.81 | 1.24 |
| SADD086 | 337.85 | 349.89 | 12.04 | 1.40 |
| <i>Including:</i> | <i>339.00</i> | <i>343.00</i> | <i>4.00</i> | <i>2.11</i> |
| SADD087 | 137.06 | 141.72 | 4.66 | 2.07 |
| <i>Including:</i> | <i>137.06</i> | <i>140.00</i> | <i>2.94</i> | <i>2.45</i> |
| SADD087 | 212.39 | 221.41 | 9.02 | 2.06 |
| <i>Including:</i> | <i>212.39</i> | <i>215.00</i> | <i>2.61</i> | <i>2.45</i> |
| <i>And:</i> | <i>218.00</i> | <i>220.61</i> | <i>2.61</i> | <i>2.41</i> |
| SADD087 | 257.60 | 260.78 | 3.18 | 1.02 |
| SADD087 | 266.46 | 267.40 | 0.94 | 1.92 |
| SADD087 | 405.00 | 406.00 | 1.00 | 0.65 |
| SADD088 | 133.94 | 135.43 | 1.49 | 1.33 |
| SADD088 | 139.76 | 141.75 | 1.99 | 1.81 |
| SADD088 | 161.73 | 167.95 | 6.22 | 0.69 |
| <i>Including:</i> | <i>165.00</i> | <i>167.95</i> | <i>2.95</i> | <i>0.94</i> |
| <i>And:</i> | <i>161.73</i> | <i>162.90</i> | <i>1.17</i> | <i>0.80</i> |
| SADD088 | 202.32 | 204.60 | 2.28 | 0.88 |
| SADD088 | 248.00 | 254.70 | 6.70 | 1.10 |
| <i>Including:</i> | <i>252.00</i> | <i>254.70</i> | <i>2.70</i> | <i>1.49</i> |
| SADD088 | 280.00 | 287.20 | 7.20 | 1.56 |
| <i>Including:</i> | <i>280.00</i> | <i>285.00</i> | <i>5.00</i> | <i>1.75</i> |
| SADD088 | 288.64 | 304.06 | 15.42 | 1.48 |
| <i>Including:</i> | <i>296.00</i> | <i>301.00</i> | <i>5.00</i> | <i>2.19</i> |
| SADD088 | 327.04 | 339.69 | 12.65 | 1.44 |
| <i>Including:</i> | <i>336.00</i> | <i>338.89</i> | <i>2.89</i> | <i>2.79</i> |
| SADD088 | 349.68 | 351.42 | 1.74 | 1.04 |
| SADD088 | 357.22 | 358.05 | 0.83 | 1.71 |
| SADD089 | 115.19 | 118.54 | 3.35 | 0.61 |
| SADD089 | 137.27 | 140.16 | 2.89 | 0.87 |
| SADD089 | 212.72 | 231.01 | 18.29 | 1.90 |
| <i>Including:</i> | <i>213.90</i> | <i>221.00</i> | <i>7.10</i> | <i>2.53</i> |
| SADD089 | 302.69 | 318.81 | 16.12 | 1.55 |

| | | | | |
|-------------------|--------|--------|-------|-------------------|
| <i>Including:</i> | 302.69 | 308.00 | 5.31 | 2.33 |
| SADD089 | 373.00 | 374.71 | 1.71 | 1.00 |
| SADD089 | 389.16 | 391.80 | 2.64 | 1.33 |
| SADD089 | 402.36 | 404.41 | 2.05 | 0.74 |
| SADD089 | 409.43 | 412.40 | 2.97 | 1.20 |
| SADD090 | 74.28 | 76.00 | 1.72 | 0.69 |
| SADD090 | 81.00 | 81.80 | 0.80 | 0.70 |
| SADD090 | 145.41 | 147.35 | 1.94 | 1.26 |
| SADD090 | 165.15 | 168.00 | 2.85 | 1.55 |
| SADD090 | 188.80 | 192.12 | 3.32 | 1.01 |
| SADD090 | 263.00 | 264.00 | 1.00 | 2.12 |
| SADD091 | 93.70 | 94.90 | 1.20 | 0.90 |
| SADD091 | 166.00 | 167.24 | 1.24 | 0.95 |
| SADD091 | 167.60 | 167.94 | 0.34 | 2.08 |
| SADD091 | 190.52 | 192.17 | 1.65 | 1.48 |
| SADD091 | 208.10 | 209.00 | 0.90 | 0.40 |
| SADD091 | 213.79 | 219.85 | 6.06 | 1.17 |
| SADD091 | 290.29 | 306.21 | 15.92 | 1.64 |
| <i>Including:</i> | 296.00 | 302.00 | 6.00 | 1.91 |
| SADD092 | 106.70 | 107.43 | 0.73 | 0.48 |
| SADD092 | 110.00 | 111.40 | 1.40 | 1.65 |
| SADD092 | 132.15 | 134.00 | 1.85 | 1.08 |
| SADD092 | 202.92 | 219.04 | 16.12 | 1.23 |
| <i>Including:</i> | 204.00 | 218.00 | 14.00 | 1.39 |
| <i>And:</i> | 205.00 | 208.00 | 3.00 | 1.92 |
| SADD092 | 279.93 | 292.47 | 12.54 | 1.54 |
| <i>Including:</i> | 282.00 | 291.00 | 9.00 | 1.91 |
| SADD093 | 95.00 | 99.00 | 4.00 | 1.19 |
| SADD093 | 170.50 | 171.20 | 0.70 | 0.73 |
| SADD093 | 202.89 | 211.02 | 8.13 | 1.61 |
| <i>Including:</i> | 204.00 | 210.00 | 6.00 | 1.88 |
| SADD093 | 233.00 | 238.57 | 5.57 | 1.56 |
| <i>Including:</i> | 235.00 | 236.82 | 1.82 | 2.17 |
| SADD093 | 244.43 | 246.72 | 2.29 | 1.13 |
| SADD093 | 293.28 | 307.07 | 13.79 | 1.52 |
| <i>Including:</i> | 294.20 | 300.00 | 5.80 | 1.67 |
| SADD093 | 318.00 | 326.16 | 8.16 | 1.36 ² |
| <i>Including:</i> | 320.00 | 325.00 | 5.00 | 1.59 ² |
| SADD093 | 331.35 | 333.15 | 1.80 | 1.13 ² |
| SADD094 | 77.00 | 78.62 | 1.62 | 1.36 |
| SADD094 | 195.05 | 205.00 | 9.95 | 0.77 |
| <i>Including:</i> | 195.05 | 197.00 | 1.95 | 1.15 |
| <i>And:</i> | 199.00 | 204.00 | 5.00 | 0.90 |
| SADD094 | 242.17 | 248.91 | 6.74 | 1.21 |
| <i>Including:</i> | 243.00 | 247.00 | 4.00 | 1.72 |

| | | | | |
|-------------------|---------------|---------------|-------------|-------------------------|
| SADD094 | 267.32 | 273.45 | 6.13 | 1.51 |
| SADD095 | 175.48 | 184.42 | 8.94 | 1.32 |
| <i>Including:</i> | <i>177.40</i> | <i>183.40</i> | <i>6.00</i> | <i>1.69</i> |
| SADD095 | 200.01 | 201.55 | 1.54 | 1.35 |
| SADD095 | 210.81 | 221.58 | 10.77 | 1.39 |
| <i>Including:</i> | <i>212.00</i> | <i>220.00</i> | <i>8.00</i> | <i>1.52</i> |
| SADD095 | 315.29 | 319.00 | 3.71 | 1.80 |
| SADD096 | 75.46 | 76.56 | 1.10 | 1.22 |
| SADD096 | 89.38 | 90.15 | 0.77 | 0.66 |
| SADD096 | 235.47 | 247.82 | 12.35 | 1.42 |
| <i>Including:</i> | <i>235.47</i> | <i>243.00</i> | <i>7.53</i> | <i>1.91</i> |
| SADD096 | 283.30 | 297.10 | 13.80 | 1.35 ² |
| <i>Including:</i> | <i>286.00</i> | <i>294.00</i> | <i>8.00</i> | <i>1.58²</i> |
| SADD097 | 95.68 | 107.18 | 11.50 | 1.46 |
| <i>Including:</i> | <i>102.00</i> | <i>106.11</i> | <i>4.11</i> | <i>2.23</i> |
| SADD097 | 114.30 | 133.90 | 19.60 | 1.42 |
| <i>Including:</i> | <i>114.30</i> | <i>119.00</i> | <i>4.70</i> | <i>1.52</i> |
| SADD098 | 181.10 | 182.67 | 1.57 | 1.23 |
| SADD098 | 184.72 | 193.84 | 9.12 | 1.62 |
| <i>Including:</i> | <i>184.72</i> | <i>190.00</i> | <i>5.28</i> | <i>1.82</i> |
| SADD098 | 267.63 | 276.55 | 8.92 | 1.15 |
| <i>Including:</i> | <i>268.30</i> | <i>272.00</i> | <i>3.70</i> | <i>1.90</i> |
| SADD099 | 89.00 | 89.84 | 0.84 | 0.43 |
| SADD099 | 171.85 | 182.31 | 10.46 | 1.17 |
| <i>Including:</i> | <i>173.00</i> | <i>177.00</i> | <i>4.00</i> | <i>1.54</i> |
| SADD099 | 246.25 | 257.00 | 10.75 | 1.17 |
| <i>Including:</i> | <i>246.25</i> | <i>248.00</i> | <i>1.75</i> | <i>1.67</i> |
| <i>And:</i> | <i>253.00</i> | <i>255.00</i> | <i>2.00</i> | <i>2.23</i> |
| SADD100 | 31.86 | 35.20 | 3.34 | 1.20 |
| SADD100 | 123.63 | 126.07 | 2.44 | 1.10 |
| SADD100 | 188.60 | 192.65 | 4.05 | 1.53 |
| SADD100 | 274.41 | 284.66 | 10.25 | 1.50 |
| <i>Including:</i> | <i>274.41</i> | <i>276.00</i> | <i>1.59</i> | <i>1.88</i> |
| <i>And:</i> | <i>279.00</i> | <i>283.00</i> | <i>4.00</i> | <i>1.70</i> |
| SADD101 | 130.55 | 136.77 | 6.22 | 1.75 |
| <i>Including:</i> | <i>130.55</i> | <i>133.00</i> | <i>2.45</i> | <i>1.90</i> |
| SADD101 | 143.94 | 148.50 | 4.56 | 1.05 |
| <i>Including:</i> | <i>143.94</i> | <i>146.70</i> | <i>2.76</i> | <i>1.45</i> |
| SADD101 | 177.55 | 181.00 | 3.45 | 0.78 |
| SADD101 | 214.00 | 220.00 | 6.00 | 1.17 |
| <i>Including:</i> | <i>214.00</i> | <i>217.00</i> | <i>3.00</i> | <i>1.38</i> |
| SADD102 | 109.84 | 116.00 | 6.16 | 1.00 |
| SADD102 | 169.00 | 171.77 | 2.77 | 1.18 |
| SADD103 | 75.00 | 84.27 | 9.27 | 1.62 |
| <i>Including:</i> | <i>77.00</i> | <i>81.00</i> | <i>4.00</i> | <i>1.98</i> |

For personal use only

| | | | | |
|-------------------|---|---------------|--------------|-------------------------|
| SADD104 | 150.00 | 151.85 | 1.85 | 0.95 |
| SADD105 | 69.05 | 71.97 | 2.92 | 1.23 |
| SADD105 | 87.37 | 88.52 | 1.15 | 0.78 |
| SADD105 | 148.43 | 151.65 | 3.22 | 1.14 |
| SADD105 | 211.89 | 219.70 | 7.81 | 1.54 |
| <i>Including:</i> | <i>214.00</i> | <i>216.00</i> | <i>2.00</i> | <i>2.77</i> |
| SADD105 | 271.23 | 282.88 | 11.65 | 1.89 |
| <i>Including:</i> | <i>271.23</i> | <i>281.00</i> | <i>9.77</i> | <i>2.00</i> |
| SADD106 | 124.00 | 132.49 | 8.49 | 1.39 |
| <i>Including:</i> | <i>125.00</i> | <i>129.00</i> | <i>4.00</i> | <i>1.68</i> |
| SADD106 | 244.30 | 256.38 | 12.08 | 1.22 |
| <i>Including:</i> | <i>244.30</i> | <i>250.00</i> | <i>5.70</i> | <i>1.72</i> |
| SADD106 | 296.68 | 302.83 | 6.15 | 1.35 |
| <i>Including:</i> | <i>297.83</i> | <i>302.00</i> | <i>4.17</i> | <i>1.42</i> |
| SADD107 | 50.16 | 74.90 | 24.74 | 1.23 |
| <i>Including:</i> | <i>58.00</i> | <i>68.00</i> | <i>10.00</i> | <i>1.72</i> |
| SADD107 | 233.69 | 236.20 | 2.51 | 0.93 |
| SADD107 | 309.00 | 331.00 | 22.00 | 0.98 ² |
| <i>Including:</i> | <i>310.00</i> | <i>315.00</i> | <i>5.00</i> | <i>2.02²</i> |
| <i>And:</i> | <i>317.00</i> | <i>322.00</i> | <i>5.00</i> | <i>1.18²</i> |
| SADD107 | 348.44 | 355.00 | 6.56 | 1.09 |
| SADD107 | 427.00 | 429.00 | 2.00 | 1.21 |
| SADD108 | 177.38 | 181.25 | 3.87 | 1.50 |
| SADD108 | 203.06 | 204.66 | 1.60 | 0.96 ² |
| SADD108 | 264.25 | 273.21 | 8.96 | 1.27 |
| SADD109 | 170.99 | 173.00 | 2.01 | 1.61 ² |
| SADD109 | 190.00 | 191.00 | 1.00 | 1.58 ² |
| SADD109 | 192.64 | 193.46 | 0.82 | 0.46 ² |
| SADD109 | 211.60 | 212.58 | 0.98 | 0.53 |
| SADD110 | 65.20 | 68.20 | 3.00 | 0.61 |
| SADD111 | <i>No Significant results¹</i> | | | |
| SADD112 | 139.16 | 143.98 | 4.82 | 1.18 |
| SADD112 | 243.59 | 251.95 | 8.36 | 1.50 ² |
| <i>Including:</i> | <i>244.75</i> | <i>251.00</i> | <i>6.25</i> | <i>1.71²</i> |
| SADD112 | 288.94 | 293.10 | 4.16 | 1.64 ² |
| SADD114 | 188.00 | 190.00 | 2.00 | 2.22 ² |
| SADD114 | 187.07 | 204.00 | 16.93 | 1.36 ² |
| <i>Including:</i> | <i>194.95</i> | <i>203.00</i> | <i>8.05</i> | <i>1.74²</i> |
| SADD115 | 45.67 | 48.00 | 2.33 | 0.91 ² |
| SADD115 | 193.54 | 196.49 | 2.95 | 0.94 ² |
| SADD116 | 72.38 | 76.29 | 3.91 | 1.22 ² |
| SADD116 | 103.22 | 105.59 | 2.37 | 1.50 ² |
| SADD116 | 111.83 | 112.84 | 1.01 | 0.71 ² |
| SADD116 | 120.68 | 124.87 | 4.19 | 1.68 ² |
| <i>Including:</i> | <i>120.68</i> | <i>123.87</i> | <i>3.19</i> | <i>2.02²</i> |

| | | | | |
|-------------------|---|---------------|-------------|-------------------------|
| SADD116 | 134.44 | 136.32 | 1.88 | 2.00 ² |
| SADD116 | 211.55 | 216.47 | 4.92 | 1.72 ² |
| <i>Including:</i> | <i>212.50</i> | <i>215.50</i> | <i>3.00</i> | <i>2.25²</i> |
| SADD118 | 24.09 | 25.21 | 1.12 | 0.74 ² |
| SADD119 | 69.03 | 71.00 | 1.97 | 0.43 ² |
| SADD119 | 132.94 | 147.64 | 14.70 | 1.72 ² |
| <i>Including:</i> | <i>134.00</i> | <i>138.00</i> | <i>4.00</i> | <i>2.18²</i> |
| <i>And:</i> | <i>141.00</i> | <i>146.82</i> | <i>5.82</i> | <i>2.26²</i> |
| SADD119 | 209.84 | 218.32 | 8.48 | 1.74 ² |
| <i>Including</i> | <i>211.00</i> | <i>216.00</i> | <i>5.00</i> | <i>2.12²</i> |
| SADD120 | 130.72 | 132.70 | 1.98 | 1.74 ² |
| SADD120 | 202.00 | 203.00 | 1.00 | 1.17 ² |
| SADD121 | 220.91 | 224.00 | 3.09 | 1.87 ² |
| SADD121 | 252.06 | 256.60 | 4.54 | 1.38 ² |
| SADD121 | 253.00 | 256.00 | 3.00 | 1.54 ² |
| SADD123 | 205.00 | 207.71 | 2.71 | 0.75 ² |
| SADD124 | 82.70 | 86.95 | 4.25 | 0.44 ² |
| SADD125 | 95.95 | 99.55 | 3.60 | 0.70 ² |
| SADD125 | 166.00 | 180.94 | 14.94 | 1.01 ² |
| <i>Including:</i> | <i>166.00</i> | <i>168.00</i> | <i>2.00</i> | <i>1.83²</i> |
| <i>And:</i> | <i>169.00</i> | <i>172.00</i> | <i>3.00</i> | <i>1.52²</i> |
| <i>And:</i> | <i>174.00</i> | <i>178.00</i> | <i>4.00</i> | <i>1.07²</i> |
| SADD125 | 243.59 | 246.31 | 2.72 | 1.60 ² |
| SADD126 | <i>No Significant results¹</i> | | | |
| SADD127 | 103.70 | 105.71 | 2.01 | 0.83 ² |
| SADD127 | 153.87 | 158.97 | 5.10 | 1.75 ² |
| SADD127 | 236.36 | 238.31 | 1.95 | 2.49 ² |
| SADD128 | <i>No Significant results¹</i> | | | |
| SADD129 | <i>No Significant results¹</i> | | | |
| SADD130 | <i>No Significant results¹</i> | | | |
| SADD131 | <i>No Significant results¹</i> | | | |
| SADD133 | 134.44 | 145.55 | 11.11 | 0.97 ² |
| <i>And:</i> | <i>140.44</i> | <i>144.44</i> | <i>4.00</i> | <i>1.26²</i> |
| SADD134 | 168.07 | 181.31 | 13.24 | 1.89 ² |
| <i>Including:</i> | <i>168.07</i> | <i>173.00</i> | <i>4.93</i> | <i>2.58²</i> |
| <i>And:</i> | <i>175.00</i> | <i>181.31</i> | <i>6.31</i> | <i>1.72²</i> |
| SADD135 | <i>No Significant results¹</i> | | | |

Note:

1. A nominal minimum Li₂O grade of 0.5% Li₂O has been used to define a 'significant intersection' over a nominal minimum intersection of 1.0m with a maximum internal dilution of 2.0 m.
2. New assay result received since the announcement dated 18 May 2023 and entitled "New Drilling Confirms Colina Lithium Pegmatites Extend to Over 2.0 Kms".

APPENDIX 2
JORC CODE, 2012 EDITION – TABLE 1
SECTION 1 SAMPLING TECHNIQUES AND DATA
(CRITERIA IN THIS SECTION APPLY TO ALL SUCCEEDING SECTIONS)

| Criteria | JORC Code explanation | Commentary |
|---------------------|--|---|
| Sampling techniques | <ul style="list-style-type: none"> • Nature and quality of sampling (e.g. cut channels, random chips, or specific specialised industry standard measurement tools appropriate to the minerals under investigation, such as down hole gamma sondes, or handheld XRF instruments, etc). These examples should not be taken as limiting the broad meaning of sampling. • Include reference to measures taken to ensure sample representivity and the appropriate calibration of any measurement tools or systems used. • Aspects of the determination of mineralisation that are Material to the Public Report. • In cases where ‘industry standard’ work has been done this would be relatively simple (e.g. ‘reverse circulation drilling was used to obtain 1 m samples from which 3 kg was pulverised to produce a 30 g charge for fire assay’). In other cases, more explanation may be required, such as where there is coarse gold that has inherent sampling problems. Unusual commodities or mineralisation types (e.g. submarine nodules) may warrant disclosure of detailed information. | <ul style="list-style-type: none"> • The July 2021 stream sediment sampling program was completed by Latin Resources. • Latin Resources stream sediment sampling: <ul style="list-style-type: none"> ○ Stream sediment samples were taken in the field by Latin’s geologists during field campaign using pre-set locations and procedures. ○ All surface organic matter and soil were removed from the sampling point, then the active stream sediment was collected from five holes spaced 2.5 m using a post digger. ○ Five subsamples were collected along 25 cm depth, homogenised in a plastic tarp and split into four parts. ○ The chosen part (1/4) was screened using a 2 mm stainless steel sieve. ○ A composite sample weighting 350-400g of the <2 mm fraction was poured in a labelled zip lock bag for assaying. ○ Oversize material retained in the sieve was analyzed with hand lens and discarded. ○ The other three quartiles were discarded, sample holes were filled back, and sieve and canvas were thoroughly cleaned. ○ Photographs of the sampling location were taken for all the samples. ○ Sample book were filled in with sample information and coordinates. ○ Stream sediment sample locations were collected in the field using a hand-held GPS with +/-5m accuracy using Datum SIRGAS 2000, Zone 23 South) coordinate system. ○ No duplicate samples were taken at this stage. ○ No certified reference standards samples were submitted at this stage. • Latin Resources Diamond Drilling: <ul style="list-style-type: none"> ○ Diamond core has been sampled in intervals of ~ 1 m (up to 1.18 m) where possible, otherwise intervals less than 1 m have been selected based on geological boundaries. Geological boundaries have not been crossed by sample intervals. ○ ½ core samples have been collected and submitted for analysis, with regular field duplicate samples collected and submitted for QA/QC analysis. |
| Drilling techniques | <ul style="list-style-type: none"> • Drill type (e.g. core, reverse circulation, open-hole hammer, rotary air blast, auger, Bangka, sonic, etc) and details (e.g. core diameter, triple or standard tube, depth of diamond tails, face-sampling bit or other type, whether core is oriented and if so, by what method, etc). | <ul style="list-style-type: none"> • Latin Resources drilling is completed using industry standard practices. Diamond drilling is completed using HQ size coring equipment. • Drilling techniques used at Salinas Project comprise: <ul style="list-style-type: none"> ○ NTW Diamond Core (64.2mm diameter), standard tube to a depth of ~200- 250 m. ○ BTW diamond core utilized for hole SADD031 from a depth of 309.10 m. ○ Diamond core holes drilled directly from surface. ○ Initial drill rig alignment is carried out using Reflex TN14 alignment tool. |

| Criteria | JORC Code explanation | Commentary |
|--|--|--|
| | | <ul style="list-style-type: none"> ○ Down hole survey was carried out by Reflex EZ-TRAC tool. ○ Core orientation was provided by an ACT Reflex (ACT III) tool. ● All drill collars are surveyed using RTK DGPS. |
| Drill sample recovery | <ul style="list-style-type: none"> ● Method of recording and assessing core and chip sample recoveries and results assessed. ● Measures taken to maximise sample recovery and ensure representative nature of the samples. ● Whether a relationship exists between sample recovery and grade and whether sample bias may have occurred due to preferential loss/gain of fine/coarse material. | <ul style="list-style-type: none"> ● Latin Resources core is depth marked and orientated to check against the driller's blocks, ensuring that all core loss is taken into account. Diamond core recovery is logged and captured into the database. ● Zones of significant core loss may have resulted in grade dilution due to the loss of fine material. |
| Logging | <ul style="list-style-type: none"> ● Whether core and chip samples have been geologically and geotechnically logged to a level of detail to support appropriate Mineral Resource estimation, mining studies and metallurgical studies. ● Whether logging is qualitative or quantitative in nature. Core (or costean, channel, etc) photography. ● The total length and percentage of the relevant intersections logged. | <ul style="list-style-type: none"> ● All drill cores have been geologically logged. ● Sampling is by sawing core in half and then sampling core on nominal 1m intervals. ● All core sample intervals have been photographed before and after sawing. ● Latin's geological logging is completed for all holes, and it is representative. The lithology, alteration, and structural characteristics of drill samples are logged following standard procedures and using standardised geological codes. ● Logging is both qualitative and quantitative depending on field being logged. ● All drill-holes are logged in full. ● Geological structures are collected using Reflex IQ Logger. ● All cores are digitally photographed and stored. |
| Sub-sampling techniques and sample preparation | <ul style="list-style-type: none"> ● If core, whether cut or sawn and whether quarter, half or all core taken. ● If non-core, whether riffled, tube sampled, rotary split, etc and whether sampled wet or dry. ● For all sample types, the nature, quality and appropriateness of the sample preparation technique. ● Quality control procedures adopted for all sub-sampling stages to maximise representivity of samples. ● Measures taken to ensure that the sampling is representative of the in-situ material collected, including for instance results for field duplicate/second-half sampling. ● Whether sample sizes are appropriate to the grain size of the material being sampled. | <ul style="list-style-type: none"> ● For the 2021 stream sediment sampling program: <ul style="list-style-type: none"> ○ All samples collected from field were dry due to dry season. ○ To maximise representativeness, samples were taken from five holes weighting around 3 Kg each for a total of 15 Kg to be reduced to 350-400 g. ○ Samples were dried, crushed and pulverized 250g to 95% at 150#. Any samples requiring splitting were split using a Jones splitter. ● For the 2022 diamond drilling program: <ul style="list-style-type: none"> ○ Samples were crushed in a hammer mill to 75% passing -3mm followed by splitting off 250g using a Jones splitter and pulverizing to better than 95% passing 75 microns. ○ Duplicate sampling is carried out routinely throughout the drilling campaign. The laboratory will carry out routine internal repeat assays on crushed samples. ○ The selected sample mass is considered appropriate for the grain size of the material being sampled. |
| Quality of assay data and laboratory tests | <ul style="list-style-type: none"> ● The nature, quality and appropriateness of the assaying and laboratory procedures used and whether the technique is considered partial or total. ● For geophysical tools, spectrometers, handheld XRF instruments, etc, the parameters used in determining the analysis including instrument make and model, reading times, calibrations factors applied and their derivation, etc. | <ul style="list-style-type: none"> ● For the 2021 stream sediment sampling program: <ul style="list-style-type: none"> ○ The stream sediment samples were assayed via ICM90A (fusion by sodium peroxide and finish with ICP-MS/ICP-OES) for a 56-element suite at the SGS Geosol Laboratorios located at Vespasiano/Minas Gerais, Brazil. ○ No control samples have been used at this stage. The internal laboratory controls (blanks, duplicates and standards) are considered suitable. |

| Criteria | JORC Code explanation | Commentary |
|---|--|--|
| | <ul style="list-style-type: none"> Nature of quality control procedures adopted (e.g. standards, blanks, duplicates, external laboratory checks) and whether acceptable levels of accuracy (i.e. lack of bias) and precision have been established. | <ul style="list-style-type: none"> For the 2022 diamond drilling program: <ul style="list-style-type: none"> Core samples are assayed via ICM90A (fusion by sodium peroxide and finish with ICP-MS/ICP-OES) for a 56-element suite at the SGS Geosol Laboratories located at Vespasiano/Minas Gerais, Brazil. If lithium results are above 15,000ppm, the Lab analyze the pulp samples just for lithium through ICP90Q (fusion by sodium peroxide and finish with ICP/OES). |
| Verification of sampling and assaying | <ul style="list-style-type: none"> The verification of significant intersections by either independent or alternative company personnel. The use of twinned holes. Documentation of primary data, data entry procedures, data verification, data storage (physical and electronic) protocols. Discuss any adjustment to assay data. | <ul style="list-style-type: none"> Selected sample results which are considered to be significant will be subjected to resampling by the Company. This can be achieved by either reassaying of sample pulps, resplitting of coarse reject samples, or resplitting of core and reassaying. All Latin Resources data is verified by the Competent person. All data is stored in an electronic Access Database. <ul style="list-style-type: none"> Assay data and results is reported, unadjusted. Li₂O results used in the market are converted from Li results multiplying it by the industry factor 2.153. |
| Location of data points | <ul style="list-style-type: none"> Accuracy and quality of surveys used to locate drill holes (collar and down-hole surveys), trenches, mine workings and other locations used in Mineral Resource estimation. Specification of the grid system used. Quality and adequacy of topographic control. | <ul style="list-style-type: none"> Stream sediment sample locations and drill collars are captured using a handheld GPS. Drill collars are located using a handheld GPS. All GPS data points were later visualized using ESRI ArcGIS Software to ensure they were recorded in the correct position. The grid system used was UTM SIRGAS 2000 zone 23 South. |
| Data spacing and distribution | <ul style="list-style-type: none"> Data spacing for reporting of Exploration Results. Whether the data spacing and distribution is sufficient to establish the degree of geological and grade continuity appropriate for the Mineral Resource and Ore Reserve estimation procedure(s) and classifications applied. Whether sample compositing has been applied. | <ul style="list-style-type: none"> Stream sediment samples were taken every 200m between sampling points along the drainages which is considered appropriate for a first stage, regional work. Every sampling spot had a composite sample made of five subsamples spaced 2.5 m each along a channel for a 10 m length zone or a cross pattern with the same spacing of 2.5 m for the open valleys and braided channels. Due to the preliminary nature of the initial drilling campaign, drill holes are designed to test specific targets, with not set drill spacing. |
| Orientation of data in relation to geological structure | <ul style="list-style-type: none"> Whether the orientation of sampling achieves unbiased sampling of possible structures and the extent to which this is known, considering the deposit type. If the relationship between the drilling orientation and the orientation of key mineralised structures is considered to have introduced a sampling bias, this should be assessed and reported if material. | <ul style="list-style-type: none"> Sampling is preferentially across the strike or trend of mineralised outcrops. Drilling has been designed to intersect the mapped stratigraphy as close to normal as possible. |
| Sample security | <ul style="list-style-type: none"> The measures taken to ensure sample security. | <ul style="list-style-type: none"> At all times samples were in the custody and control of the Company's representatives until delivery to the laboratory where samples were held in a secure enclosure pending processing. |
| Audits or reviews | <ul style="list-style-type: none"> The results of any audits or reviews of sampling techniques and data. | <ul style="list-style-type: none"> The Competent Person for Exploration Results reported here has reviewed the field procedures used for sampling program at field and has compiled results from the original sampling and laboratory data. No External audit has been undertaken at this stage. |

SECTION 2 REPORTING OF EXPLORATION RESULTS
(CRITERIA LISTED IN THE PRECEDING SECTION ALSO APPLY TO THIS SECTION.)

| Criteria | JORC Code explanation | Commentary |
|---|--|---|
| Mineral tenement and land tenure status | <ul style="list-style-type: none"> Type, reference name/number, location and ownership including agreements or material issues with third parties such as joint ventures, partnerships, overriding royalties, native title interests, historical sites, wilderness or national park and environmental settings. The security of the tenure held at the time of reporting along with any known impediments to obtaining a licence to operate in the area. | <ul style="list-style-type: none"> Exploration Licences: 830.578/2019, 830.579/2019, 830.580/2019, 30.581/2019, 830.582/2019, 830.691/2017, 832.515/2021 and the western portion of 831.799/2005 are 100% fully owned by Latin Resources Limited. Latin has lodged new applications for the following areas: 832.601/2022, 832.602/2022, 832.604/2022, 832.605/2022, 832.606/2022, 832.607/2022, 832.608/2022, 832.609/2022, 832.611/2022, 832.612/2022, 832.613/2022, 832.614/2022, 832.616/2022, 832.801/2022, 832.802/2022 & 832.804/2022. Latin has entered in separate exclusive option agreement to acquire 100% interest in the areas: 830.080/2022, 830.581/2019, 831.118/2008, 831.219/2017, 831.798/2015, 831.799/2005 (Second Part & Third Part), 833.881/2010 & 834.282/2007. The Company is not aware of any impediments to obtaining a licence to operate, subject to carrying out appropriate environmental and clearance surveys. |
| Exploration done by other parties | <ul style="list-style-type: none"> Acknowledgment and appraisal of exploration by other parties. | <ul style="list-style-type: none"> Historic exploration was carried out on the area 830.080/2022 (Monte Alto) with extraction of gems (tourmaline and lepidolite), amblygonite, columbite and feldspar. |
| Geology | <ul style="list-style-type: none"> Deposit type, geological setting and style of mineralisation. | <ul style="list-style-type: none"> Salinas Lithium Project geology comprises Neoproterozoic age sedimentary rocks of Araçuaí Orogen intruded by fertile Li-bearing pegmatites originated by fractionation of magmatic fluids from the peraluminous S-type post-tectonic granitoids of Araçuaí Orogen. Lithium mineralisation is related to discordant swarms of spodumene-bearing tabular pegmatites hosted by biotite-quartz schists. |
| Drill hole Information | <ul style="list-style-type: none"> A summary of all information material to the understanding of the exploration results including a tabulation of the following information for all Material drill holes: <ul style="list-style-type: none"> easting and northing of the drill hole collar elevation or RL (Reduced Level – elevation above sea level in metres) of the drill hole collar dip and azimuth of the hole down hole length and interception depth hole length If the exclusion of this information is justified on the basis that the information is not Material and this exclusion does not detract from the understanding of the report, the Competent Person should clearly explain why this is the case. | <ul style="list-style-type: none"> All drill hole summary location data is provided in Appendix 1 to this report and is accurately represented in appropriate location maps and drill sections where required. |
| Data aggregation methods | <ul style="list-style-type: none"> In reporting Exploration Results, weighting averaging techniques, maximum and/or minimum grade truncations (e.g. cutting of high-grades) and cut-off grades are usually Material and should be stated. Where aggregate intercepts incorporate short lengths of high-grade results and longer lengths of low-grade results, the procedure used for such | <ul style="list-style-type: none"> Sample length weighted averaging techniques have been applied to the sample assay results. Where duplicate core samples have been collected in the field, results for duplicate pairs have been averaged. A nominal minimum Li₂O grade of 0.4% Li₂O has been used to define a 'significant intersection'. No grade top cuts have been applied. |

| Criteria | JORC Code explanation | Commentary |
|--|---|---|
| | <p>aggregation should be stated and some typical examples of such aggregations should be shown in detail.</p> <ul style="list-style-type: none"> The assumptions used for any reporting of metal equivalent values should be clearly stated. | |
| Relationship between mineralisation widths and intercept lengths | <ul style="list-style-type: none"> These relationships are particularly important in the reporting of Exploration Results. If the geometry of the mineralisation with respect to the drill hole angle is known, its nature should be reported. If it is not known and only the down hole lengths are reported, there should be a clear statement to this effect (e.g. 'down hole length, true width not known'). | <ul style="list-style-type: none"> Drilling is carried out at right angles to targeted structures and mineralised zones where possible. Drill core orientation is of a high quality, with clear contact of pegmatite bodies, enabling the calculation of true width intersections. |
| Diagrams | <ul style="list-style-type: none"> Appropriate maps and sections (with scales) and tabulations of intercepts should be included for any significant discovery being reported. These should include, but not be limited to a plan view of drill hole collar locations and appropriate sectional views. | <ul style="list-style-type: none"> The Company has released various maps and figures showing the sample results in the geological context. |
| Balanced reporting | <ul style="list-style-type: none"> Where comprehensive reporting of all Exploration Results is not practicable, representative reporting of both low and high-grades and/or widths should be practiced avoiding misleading reporting of Exploration Results. | <ul style="list-style-type: none"> All analytical results for lithium have been reported. |
| Other substantive exploration data | <ul style="list-style-type: none"> Other exploration data, if meaningful and material, should be reported including (but not limited to): geological observations; geophysical survey results; geochemical survey results; bulk samples – size and method of treatment; metallurgical test results; bulk density, groundwater, geotechnical and rock characteristics; potential deleterious or contaminating substances. | <ul style="list-style-type: none"> All information that is considered material has been reported, including stream sediment sampling results, Drilling results geological context, etc. Sighter metallurgical test work was undertaken on approximately 44kg of drill core sourced from drill hole SADD023 (26.99m: 94.00-120.88m) and submitted to independent laboratories SGS GEOSOL Laboratories in Belo Horizonte Brazil. Test work included crushing, size fraction analysis and HLS separation to ascertain the amenability of the Colina Project spodumene pegmatite material to DMS treatment routes. |
| Further work | <ul style="list-style-type: none"> The nature and scale of planned further work (e.g. tests for lateral extensions or depth extensions or large-scale step-out drilling). Diagrams clearly highlighting the areas of possible extensions, including the main geological interpretations and future drilling areas, provided this information is not commercially sensitive. | <ul style="list-style-type: none"> Latin plans to undertake additional reconnaissance mapping, infill stream sediment and soil sampling at Salinas South Prospect. Follow-up infill and step-out drilling will be undertaken based on results. Additional metallurgical processing test work on drill core from the Colina Prospect. |