



## NARRYER Ni-Cu-PGE PROJECT WA STAGE TWO SOIL SAMPLING COMPLETED

**TechGen Metals Limited (ACN 624 721 035)** (“TechGen” or the “Company”) is pleased to provide an update on activities at the Company's 100% owned Narryer Project located 650km north of Perth in Western Australia (Figure 1). The project consists of Exploration Licences E20/1022 & E09/2699 covering a combined area of 380km<sup>2</sup>. The project is in the Narryer Terrane on the edge of the Archean-aged Yilgarn Craton. The western edge of the Yilgarn Craton represents the emerging under-explored West Yilgarn Ni-Cu-PGE Province which covers an area of 1,200km x 100km (Figure 2). The West Yilgarn Ni-Cu-PGE Province contains the Julimar Ni-Cu-PGE Deposit discovered in March 2020 by Chalice Mining Limited

### HIGHLIGHTS

- **An ultra-fine fraction soil sampling program completed to follow-up on existing targets and to cover the northern part of the mafic-ultramafic intrusive complex.**
- **Focus on targeting magmatic nickel-copper-PGE sulphide mineralisation within the newly identified northern Narryer Dome.**

An ultrafine soil sampling program along 22 east-west sample lines (434 samples) has been completed at the Narryer Project with samples currently being analysed. The program was designed to infill previously identified Ni-Cu-PGE and Gold target areas and to cover the northern part of a mafic-ultramafic intrusive complex which historically has not been subject to systematic exploration previously.

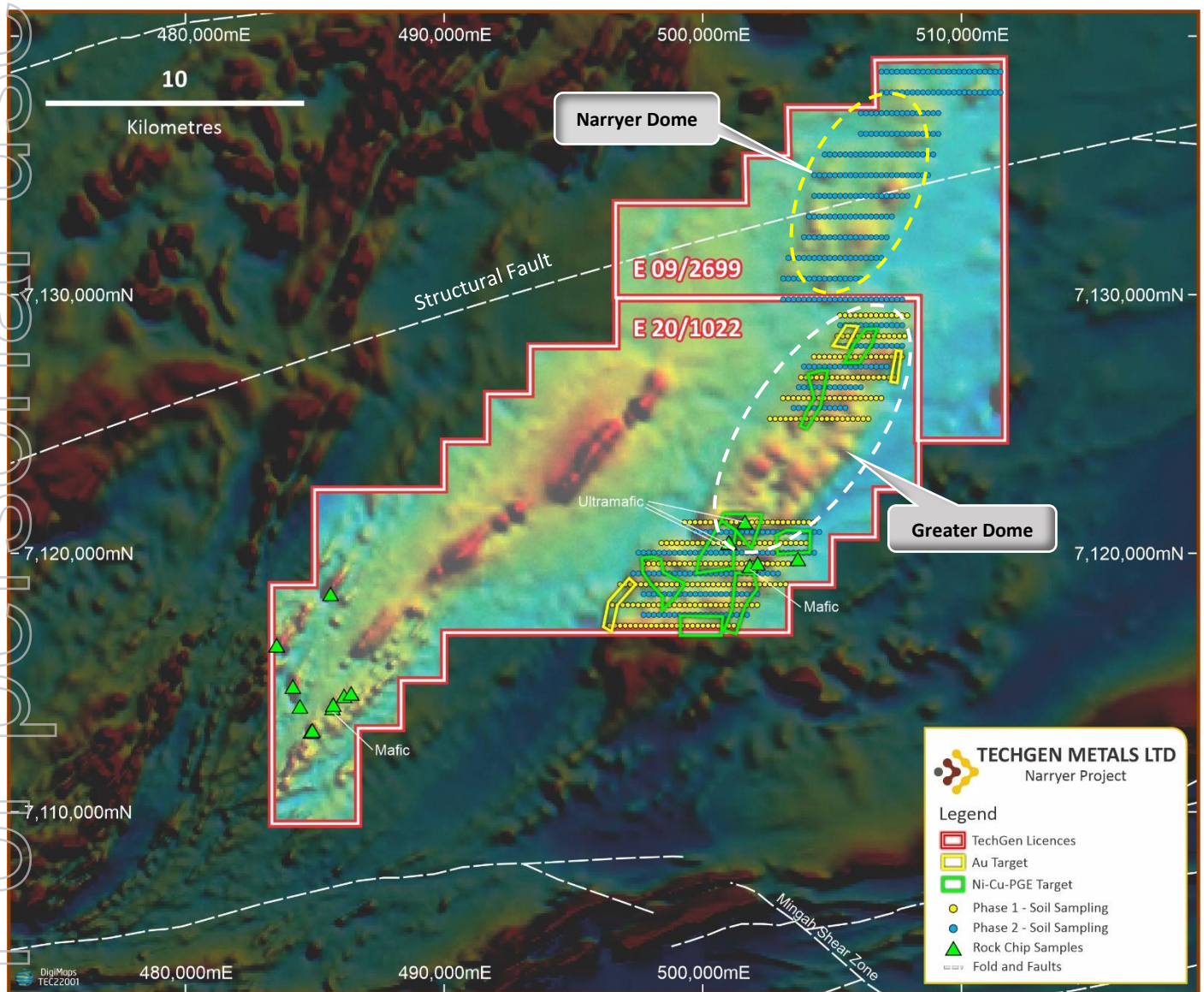


**Photo 1:** Ultra fine geochemistry sampling, view across the northern Narryer Project E09/2699.

Interpretation of airborne magnetic data highlighted a 25km x 4km long magnetic feature running NE-SW up the eastern side of E20/1022 and offset structurally but continuing into E09/2699 a mafic-ultramafic intrusive complex and thus an area of high interest for Ni-Cu-PGE exploration. The mafic/ultra-mafic Narryer Dome magnetic feature is mostly covered by alluvial sand cover and little outcrop occurs across the area.

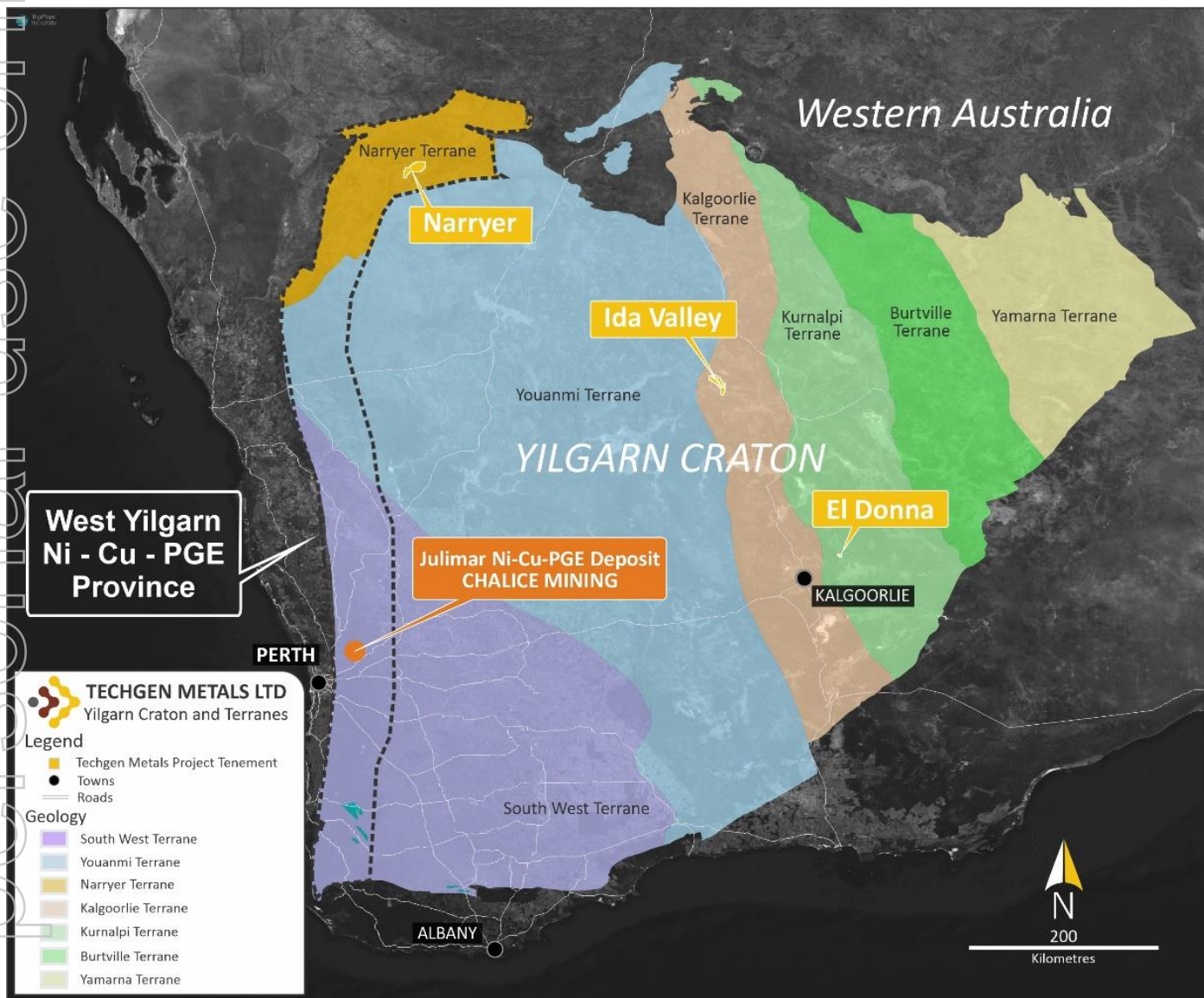
Successfully identified Ni-Cu-PGE targets of high order will be followed up with moving loop electromagnetic surveys to identify possible magmatic massive sulphide intrusive systems.

The company looks forward to further updates as results are received and modelled at its 100% owned Narryer Project.



**Figure 1:** Soil targets identified and new sampling at the Narryer Project on regional airborne magnetics.

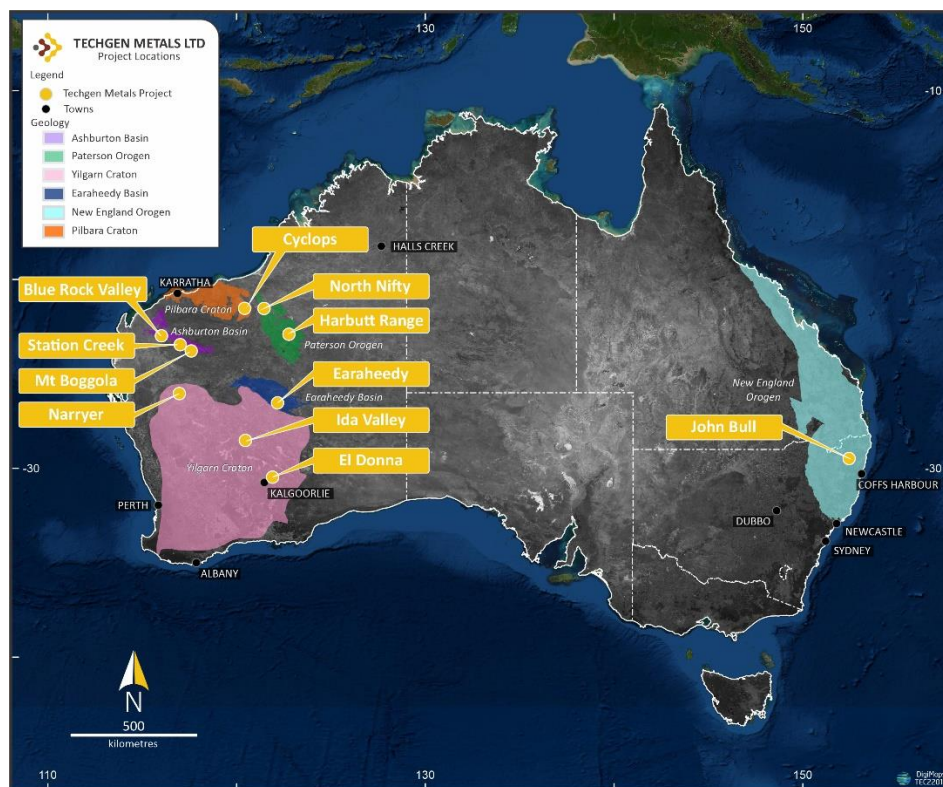
For personal use only



**Figure 2:** Location of the Narryer Project in the Yilgarn Craton of Western Australia.

Ends.

## About TechGen Metals Limited



TechGen is an Australian registered exploration Company with a primary focus on exploring and developing its gold and base metal projects across Australia. TechGen holds a portfolio of twenty-seven exploration licences strategically located in five highly prospective geological regions in WA, and one in NSW.

### Authorisation

For the purpose of Listing Rule 15.5, this announcement has been authorised for release by the Board of Directors of TechGen Metals Limited.

### Competent Person Statement

The information in this announcement that relates to Exploration Results is based on and fairly represents information compiled and reviewed by Andrew Jones, a Competent Person who is a member of the Australasian Institute of Mining and Metallurgy (AusIMM). Andrew Jones is employed as a Director of TechGen Metals Limited. Andrew Jones has sufficient experience that is relevant to the style of mineralisation and type of deposits under consideration and to the activity being undertaken to qualify as a Competent Person as defined in the 2012 edition of the Australasian Code of Reporting of Exploration Results, Mineral Resources and Ore Reserves. Andrew Jones consents to the inclusion in this announcement of the matters based on his work in the form and context in which it appears.

### Previously Reported Information

Any information in this announcement that references previous exploration results has been taken from previous ASX announcements released by the Company.

### For further information, please contact:

Mr Ashley Hood, Managing Director

P: +61 427 268 99