

For personal use only



# Acquisition of Queensland Gas Asset

29 August 2022

ASX:EXR

# Acquisition of Queensland Gas Asset

- Elixir has executed Agreements to **purchase 100% of EnergyCapture Pty Ltd**
- This company is a special purpose vehicle that owns 100% of Queensland gas exploration permit ATP 2044 – a **1,000 square kilometre tenement**
- ATP 2044 is **not subject to** any form of **domestic gas reservation**
- **Consideration** for the purchase is:
  - **A\$500,000**
  - The issue of **20,703,934 Elixir shares** to the owners (1/3 escrowed for 9 months, 1/3 escrowed for 18 months and 1/3 unencumbered)
  - An **over-riding royalty of 3% on hydrocarbon liquids** production only
- ATP 2044 is located **~35 kilometres South East from Australia's main gas hub at Wallumbilla** – and can therefore readily access both East Australian and international gas markets via Gladstone
- The permit overlies the **Taroom Trough** of the Bowen Basin – which BG Group (now Shell) drilled around a decade ago and **flowed gas and condensate to surface from multiple wells**
- Unrisked Mean Prospective Resources **of 3.3 Tcf and 75 MMbbl** associated condensate
- Elixir plans to **drill an appraisal well (Daydream-2) in 2023**, subject to rig availability and discussions with other Operators in the play such as Shell and Santos

# Deal Highlights



Acquisition of 100% of large permit located close to Wallumbilla hub



Quick access to high priced East Australian – and international – gas markets



Highly opportune purchase given global energy market dynamics



Very strong neighbours and likelihood of multi Operator drilling program in the short term

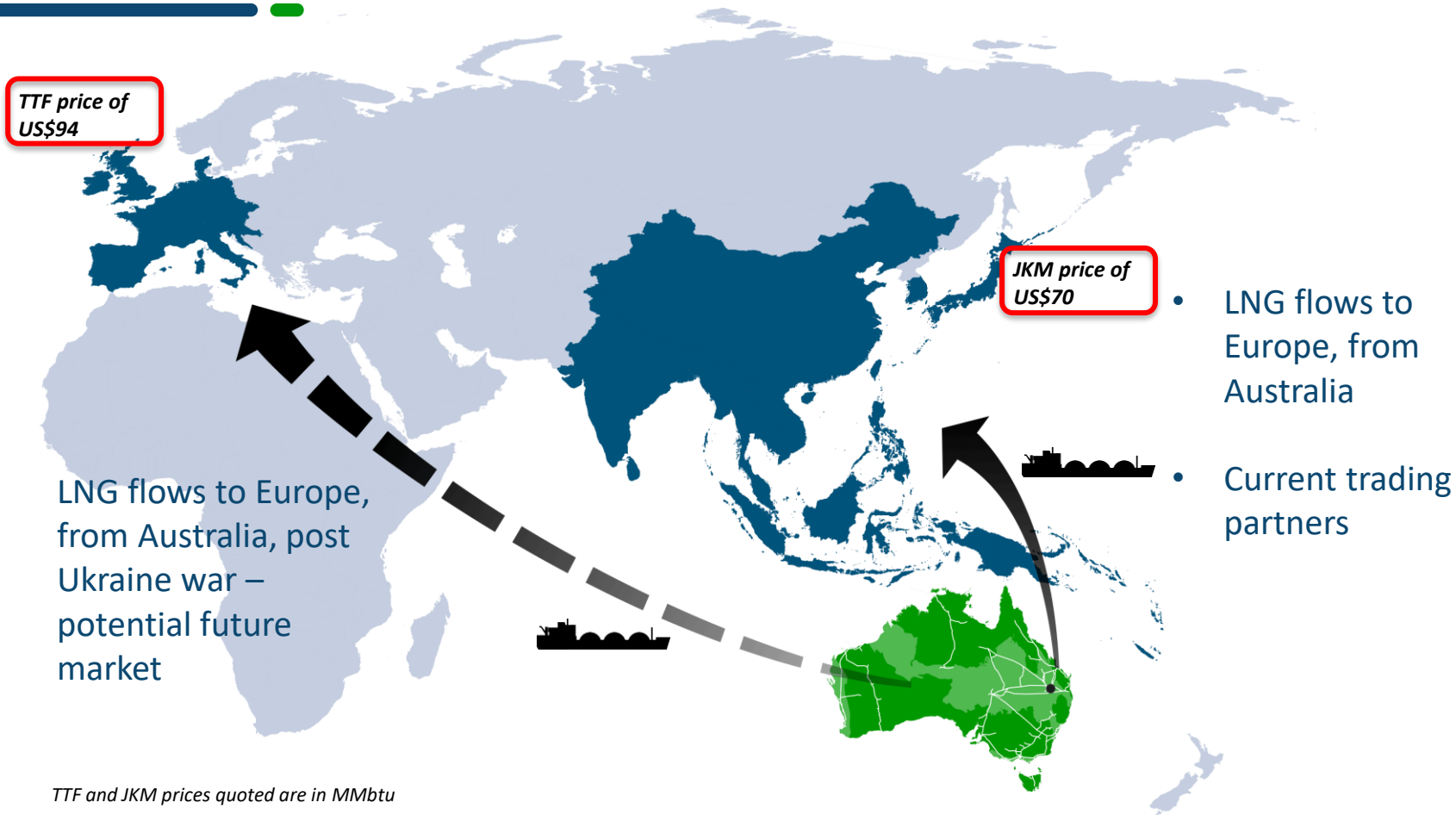


High impact drilling planned for 2023 (subject to rig availability)



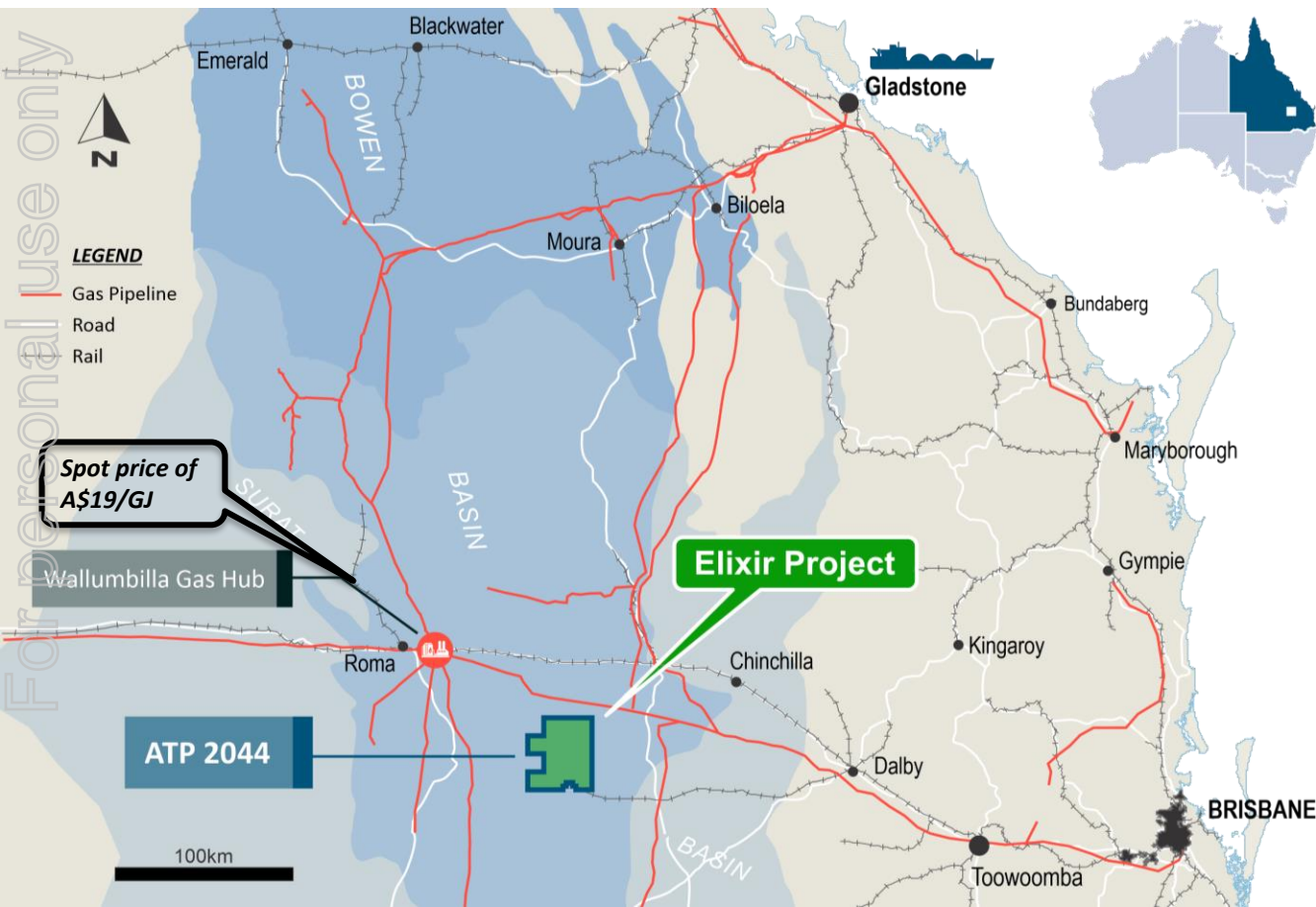
Sensible diversification within Elixir's portfolio that leverages the team's skills

# Current Global Gas Market Dynamics



TTF and JKM prices quoted are in MMBtu

# Regional Location



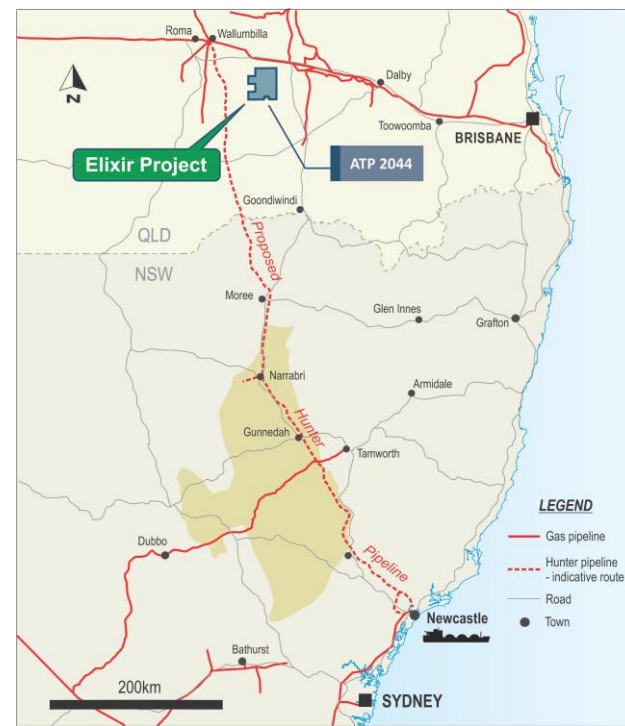
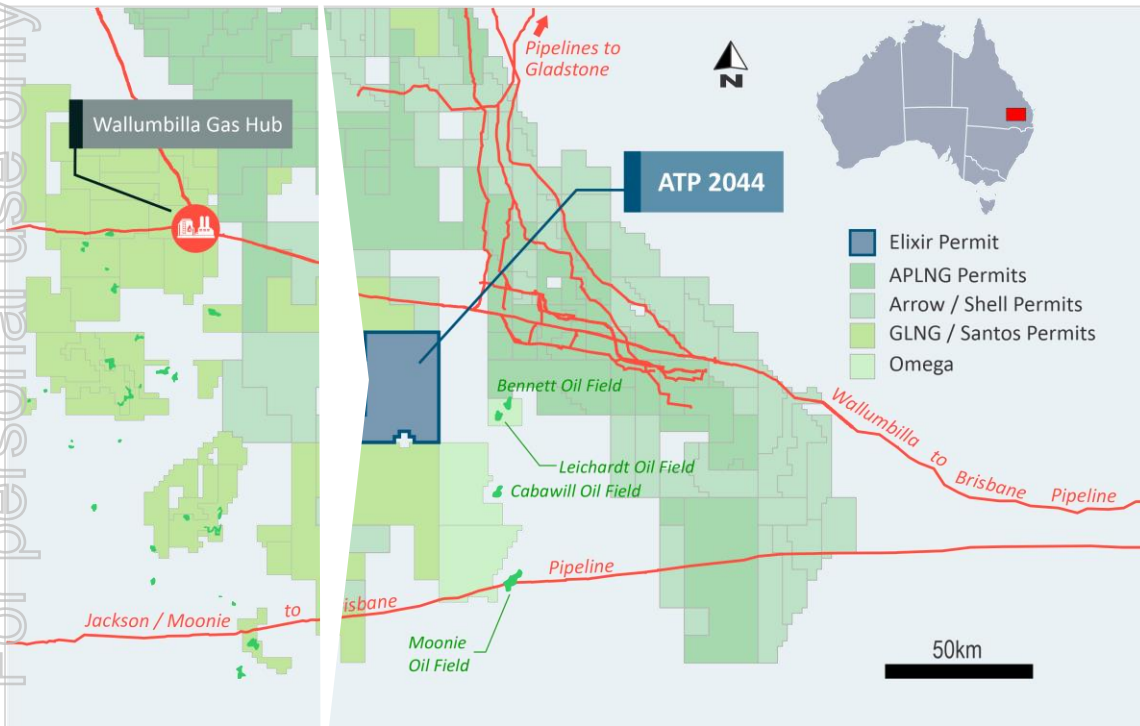
Area of 1,000 km<sup>2</sup>  
located  
approximately  
35km away from  
critical gas  
transmission  
infrastructure

Connected to  
international  
markets

Primary objectives  
are Permian aged  
sandstones and  
coals, with a  
globally relevant  
prospective gas  
resource

# Adjacent to existing and proposed pipelines

For personal use only





# ESG Friendly (for investors and industry players)



Fatah Birol, Executive Director of the IEA speaking at last month's July's Sydney Energy Forum

*The Taroom Trough gas is low in CO<sub>2</sub> and scope 1 & 2 emissions would therefore be low*

*"It is true that we have to replace Russian oil and gas..."*

*..This can be done with the existing oil and gas resources in the world...*

*..using a lot of shale oil and gas...*

*..Because they are easier to come in, easier to get out of the market..."*

- Gas from this project can reach world markets quickly via Gladstone
- The Taroom Trough contains discovered gas resources following BG Group's (now Shell) work
- The Taroom Trough contains an onshore unconventional play
- Production can be ramped up and down readily by pacing the drilling of wells

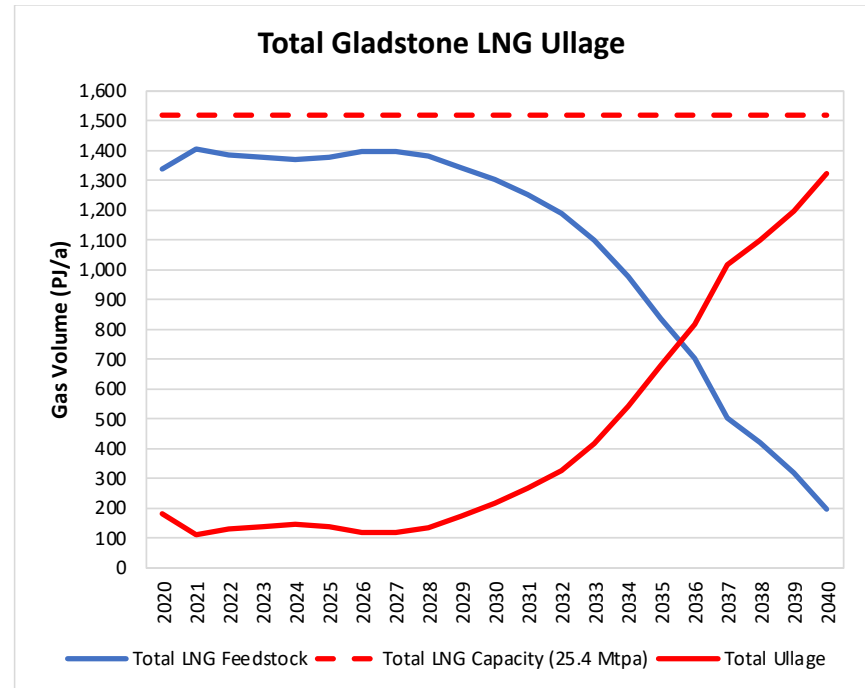
The Surat Basin in the region overlying the Permian Taroom is an emerging hub for CCS activities – e.g. current Glencore project and new areas under gazettal – some of these overlap with ATP 2044

# Access to International Markets

Elixir considers that the Taroom Trough is one of a handful of low risk locations in the world with access to spare liquefaction plant capacity

*"I will once again firmly request the United States, a major global LNG producer, and Australia, the largest LNG supplier to Japan, to step up production and ensure a stable supply of the fuel as the global LNG market is tightening in the wake of Russia's invasion of Ukraine."* Japan's Trade Minister – 13 July 2022

*"Germany is in negotiations with some of the world's top liquefied natural gas suppliers, including energy giant Shell Plc, to replace Russian fuel with alternative supplies. Joerg Kukies, German Chancellor Olaf Scholz's top economic aide, said he held talks on potential procurement in Sydney during a two-day energy forum".* Bloomberg – 13 July 2022



Source: EnergyQuest report for Elixir Energy

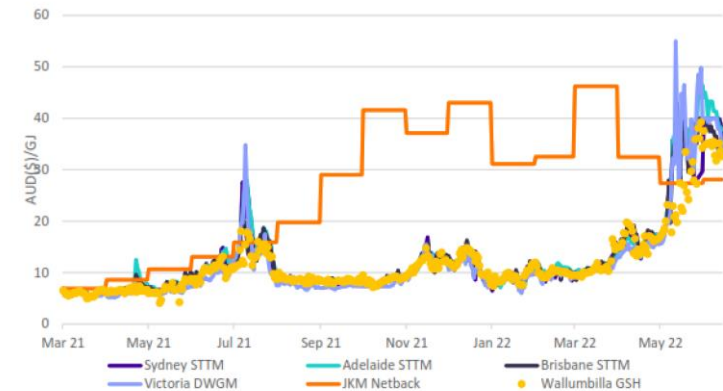


# East Coast Gas Market Dynamics

The ACCC has recently highlighted the need for new (or diverted from export) East Coast gas supplies

- The recently released ACCC *Gas Enquiry* Report highlighted potential material – and growing – shortfalls of gas supplies to Australia's East Coast market
- Very high spot and forward contract prices reflect the supply squeeze
- Notwithstanding the new Federal Government's energy transition goals, gas is still projected to have a vital role to play in power generation (backing up ever growing renewables), manufacturing and heating
- Europe's current worsening gas crisis demonstrates the intense political, commercial and personal consequences resulting from supply shortfalls

Chart 2.3: Domestic short term market prices



Source: AEMO, ACCC (JKM netback), S&P Global Platts.

Source: ACCC Gas Enquiry report dated July 2022

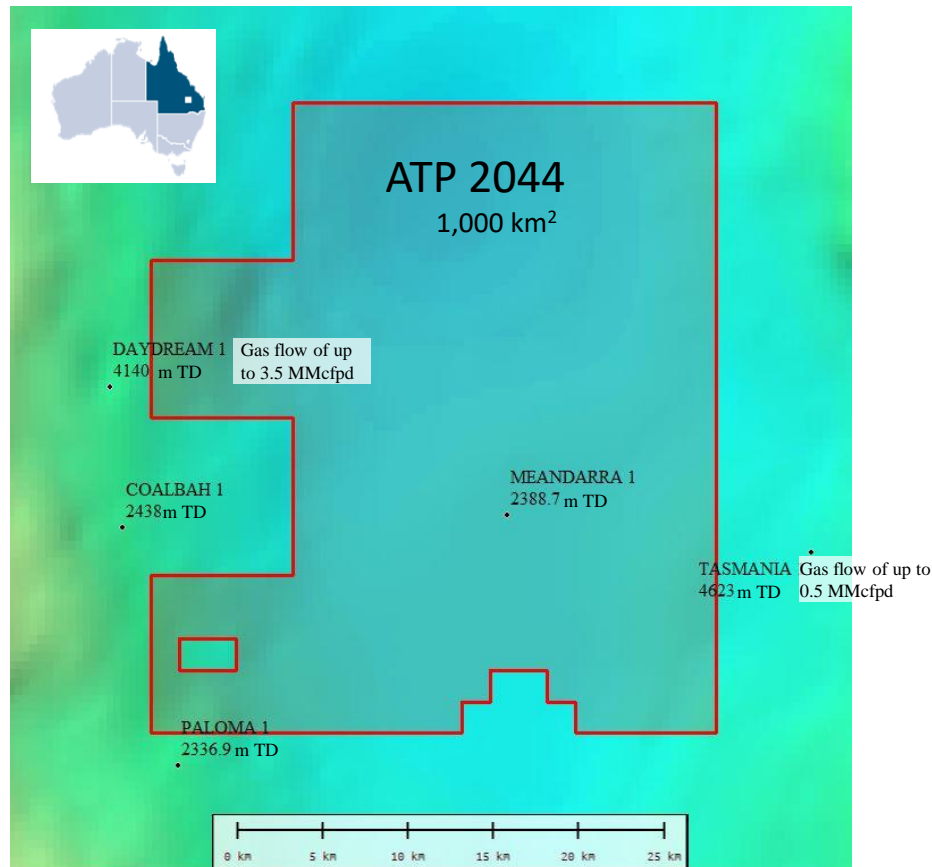
# Prospectivity of ATP 2044, Taroom Trough

For personal use only

- ATP 2044 is prospective for:
  1. Tight sandstones in a range of stratigraphic and unconventional traps
  2. Deep fractured thermal coal
- The Taroom Trough is geologically distinct from other Permian sediments in Australia:
  1. Significantly cooler than Cooper Basin
  2. Less hostile stress regime
  3. Less thermally mature
  4. No CO<sub>2</sub> or H<sub>2</sub>S issues
  5. Potential for condensate given nearby oil fields

# Existing Gas Flows

- Previous drilling by BG Group (now Shell) at Daydream-1 proved BCG play concept, 2 km west of permit
- Well flowed an instantaneous rate of 3.5 MMcfpd from an interval covering 1/10th of the gross prospective reservoir section
- Elixir's in-house reservoir modelling suggests flow rates can be significantly improved by:
  1. Accessing fractured coals as well as sandstones
  2. Using state of art stimulation techniques
  3. Focus on full Permian section (Kianga and Back Creek Formations)



# Material Prospective Resources

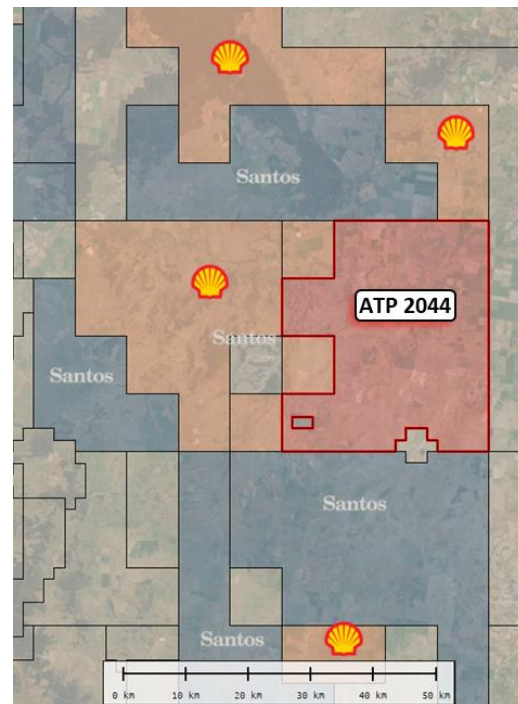
TOTAL UNRISKED PROSPECTIVE RESOURCES <sup>1</sup>					
ATP 2044 GROSS (100%)					
<i>Log Normal Distribution</i>	Low 1U <sup>2</sup>	Best 2U <sup>3</sup>	Mean <sup>4</sup>	High 3U <sup>5</sup>	
<b>TOTAL RECOVERABLE GAS</b>	<b>940</b>	<b>2488</b>	<b>3,265</b>	<b>6811</b>	<b>Bcf</b>
<b>TOTAL ASSOCIATED CONDENSATE</b>	<b>9</b>	<b>50</b>	<b>75</b>	<b>272</b>	<b>MMbbl</b>

## Notes to Table:

1. *Prospective Resources are those estimated quantities of petroleum that may potentially be recovered by the application of a future development project(s) related to undiscovered accumulations. These estimates have both an associated risk of discovery and a risk of development. Further explorations appraisal and evaluation is required to determine the existence of a significant quantity of potentially moveable hydrocarbons.*
2. *At least a 90% probability that the quantities actually recovered will equal or exceed the estimate.*
3. *At least a 50% probability that the quantities actually recovered will equal or exceed the estimate.*
4. *The arithmetic average of the probability distribution.*
5. *At least a 10% probability that the quantities actually recovered will equal or exceed the estimate.*
6. *Prospective Resources have been assessed on the basis that they are unconventional in nature.*
7. *Bcf means billion standard cubic feet of gas.*
8. *MMbbl means million barrels of oil or condensate.*
9. *The resource calculations are probabilistic but each reservoir was added arithmetically*
10. *See appendix for further information.*

# In Summary

- ✓ Large scale gas asset with access to local and international gas markets
- ✓ Considerable in-house expertise of play and region
- ✓ Perfect timing to mature another gas play given the current global energy market dynamics
- ✓ International and Australian majors actively working the play
- ✓ 100% owned and controlled



*An address dominated by much larger IOCs*

***“If the play works then we believe there is multi-TCF potential”***

Kevin Gallagher (Santos CEO) Australian Financial Review  
15 November 2018

# Important Notice & Disclaimer

This document has been prepared by Elixir Energy Limited (ABN 51 108 230 995) ("Elixir") in connection with providing an overview of its business to interested analysts/investors.

This presentation is being provided for the sole purpose of providing preliminary background financial and other information to enable recipients to review the business activities of Elixir. This presentation is thus by its nature limited in scope and is not intended to provide all available information regarding Elixir. This presentation is not intended as an offer, invitation, solicitation, or recommendation with respect to the purchase or sale of any securities. This presentation should not be relied upon as a representation of any matter that a potential investor should consider in evaluating Elixir.

Elixir and its affiliates, subsidiaries, directors, agents, officers, advisers or employees do not make any representation or warranty, express or implied, as to or endorsement of, the accuracy or completeness of any information, statements, representations or forecasts contained in this presentation, and they do not accept any liability or responsibility for any statement made in, or omitted from, this presentation. No responsibility or liability is accepted and any and all responsibility and liability is expressly disclaimed by Elixir and its affiliates, subsidiaries, directors, agents, officers, advisers and employees for any errors, misstatements, misrepresentations in or omissions from this presentation. Elixir accepts no obligation to correct or update anything in this presentation.

Any statements, estimates, forecasts or projections with respect to the future performance of Elixir and/or its subsidiaries contained in this presentation are based on subjective assumptions made by Elixir's management and about circumstances and events that have not yet taken place. Such statements, estimates, forecasts and projections involve significant elements of subjective judgement and analysis which, whilst reasonably formulated, cannot be guaranteed to occur. Accordingly, no representations are made by Elixir or its affiliates, subsidiaries, directors, officers, agents, advisers or employees as to the accuracy of such information; such statements, estimates, forecasts and projections should not be relied upon as indicative of future value or as a guarantee of value or future results; and there can be no assurance that the projected results will be achieved.

Prospective investors should make their own independent evaluation of an investment in Elixir.

Nothing in this presentation should be construed as financial product advice, whether personal or general, for the purposes of section 766B of the Corporations Act 2001 (Cth). This presentation consists purely of factual information and does not involve or imply a recommendation or a statement of opinion in respect of whether to buy, sell or hold a financial product. This presentation does not take into account the objectives, financial situation or needs of any person, and independent personal advice should be obtained.

This presentation and its contents may not be reproduced without the express written permission of Elixir. All references to dollars, cents or \$ in this presentation are to Australian currency, unless otherwise stated.

# Appendix

## Methodology:

The estimate of Prospective Resource was compiled by Elixir's Chief Geoscientist, Mr Greg Channon, who has completed a detailed and formal report on the prospective resources in ATP 2044. The work was undertaken in accordance with the Society of Petroleum Engineers internationally recognised Petroleum Resources Management System 2018 (PRMS). Mr Channon's methodology was to compile and review all available data and make interpretations of (amongst other things) the wireline logs, seismic data and historical well records relevant to the permit area. An estimate of the gross and net rock volume was determined, and from that, a probabilistic distribution of the prospective resource was compiled. A site visit to the area was conducted.

## Competent Person:

Elixir's Competent Person is Mr Greg Channon. Mr Channon is a qualified geoscientist with over 35 years of oil and gas industry experience and is a member of the American Association of Petroleum Geologists and the South East Asian Exploration Society and is a graduate of the Australian Institute of Company Directors. He is qualified as a competent person in accordance with ASX listing rule 5.41. Mr Channon consents to the inclusion of the information in this report in the form and context in which it appears.

## Reporting Standards:

Reserves and resources are reported in accordance with the definitions of reserves, contingent resources and prospective resources and guidelines set out in the Petroleum Resources Management System (PRMS) prepared by the Oil and Gas Reserves Committee of the Society of Petroleum Engineers (SPE) and reviewed and jointly sponsored by the American Association of Petroleum Geologists (AAPG), World Petroleum Council (WPC), Society of Petroleum Evaluation Engineers (SPEE), Society of Exploration Geophysicists (SEG), Society of Petrophysicists and Well Log Analysts (SPWLA) and European Association of Geoscientists and Engineers (EAGE), revised June 2018.





## INVESTORS & MEDIA

### Neil Young

Managing Director

[info@elixirenergy.com.au](mailto:info@elixirenergy.com.au)

Phone +61 8 7079 5610

[www.elixirenergy.com.au](http://www.elixirenergy.com.au)

A large white wind turbine stands in a desert landscape under a blue sky with light clouds. In the foreground, a herd of camels is silhouetted against the ground. The right side of the image features a large, abstract blue flame graphic that overlaps the turbine and the sky.

[www.elixirenergy.com.au](http://www.elixirenergy.com.au)