

For personal use only



May 2022

## Four Discovery Ready Projects

---

**ASX:PFE | Corporate Presentation**

[panteraminerals.com](https://panteraminerals.com)





**PANTERA**  
MINERALS

# Disclaimer and forward-looking statements

This presentation is not a prospectus nor an offer of securities for subscription or sale in any jurisdiction nor a securities recommendation. The information in this presentation is an overview and does not contain all information necessary for investment decisions. In making investment decisions, investors should rely on their own examination of Pantera Minerals Limited (Company) and consult with their own legal, tax, business and/or financial advisers in connection with any acquisition of securities or interest in Company. The information contained in this presentation has been prepared in good faith by the Company. However, no representation or warranty, express or implied, is made as to the completeness or adequacy of any statements, estimates, opinions or other information contained in this presentation. To the maximum extent permitted by law, the Company, its directors, officers, employees and agents disclaim liability for any loss or damage which may be suffered by any person through the use of, or reliance on, anything contained in or omitted from this presentation. Certain information in this presentation refers to the intentions of the Company, but these are not intended to be forecasts, forward looking statements, or statements about future matters for the purposes of the Corporations Act 2001 (Cth) or any other applicable law. The occurrence of events in the future are subject to risks, uncertainties and other factors that may the Company's actual results, performance or achievements to differ from those referred to in this presentation to occur as contemplated. The presentation contains only a synopsis of more detailed information available in relation to the matters described in this document and accordingly no reliance may be placed for any purpose whatsoever on the sufficiency or completeness of such information and to do so could potentially expose you to a significant risk of losing any of the property invested by you or incurring by you of additional liability. Recipients of this presentation should conduct their own investigation, evaluation and analysis of the business, data and property described in this presentation. In particular, any estimates or projections or opinions contained herein necessarily involve significant elements of subjective judgment, analysis and assumptions and you should satisfy yourself in relation to such matters.

## **COMPETENT PERSON STATEMENT (Yampi/Weelarrana)**

The information in this report that relates to exploration results and exploration targets is based on and fairly represents information compiled by Mr Nick Payne, a Competent Person who is a Member of the Australasian Institute of Mining and Metallurgy. Mr Payne has sufficient experience that is relevant to the style of mineralisation and type of deposit under consideration and to the activity being undertaken to qualify as a Competent Person as defined in the 2012 Edition of the 'Australasian Code for Reporting of Exploration Results, Mineral Resources and Ore Reserves'. Mr Payne consents to the inclusion in the report of the matters based on his information in the form and context in which it appears.

## **COMPETENT PERSON STATEMENT (Hellcat/Frederick)**

The information in this report that relates to exploration results and exploration targets is based on and fairly represents information compiled by Ms Georgina Clark, a Competent Person who is a Member of the Australasian Institute of Geoscientists. Ms Clark has sufficient experience that is relevant to the style of mineralisation and type of deposit under consideration and to the activity being undertaken to qualify as a Competent Person as defined in the 2012 Edition of the 'Australasian Code for Reporting of Exploration Results, Mineral Resources and Ore Reserves'. Ms Clark consents to the inclusion in the report of the matters based on his information in the form and context in which it appears.

All parties have consented to the inclusion of their work for the purposes of this presentation. The interpretations and conclusions reached in this presentation are based on current geological theory and the best evidence available to the author at the time of writing. It is the nature of all scientific conclusions that they are founded on an assessment of probabilities and, however high these probabilities might be, they make no claim for absolute certainty. Any economic decisions which might be taken on the basis of interpretations or conclusions contained in this presentation will therefore carry an element of risk.

# 4 Discovery-Ready Projects

A diversified greenfields explorer – Exciting 2<sup>nd</sup> year

## Yampi Copper Gold Project (80%)

- Phase 1 drilling – presence of large hydrothermal alteration system
- Pathfinder elements for porphyry copper-gold mineralization encountered
- North of and adjoining Dreadnought Resources (ASX:DRE) Orion Cu-Ag-Au-Co-Zn discovery<sup>1</sup>

## Weelarrana Manganese Project

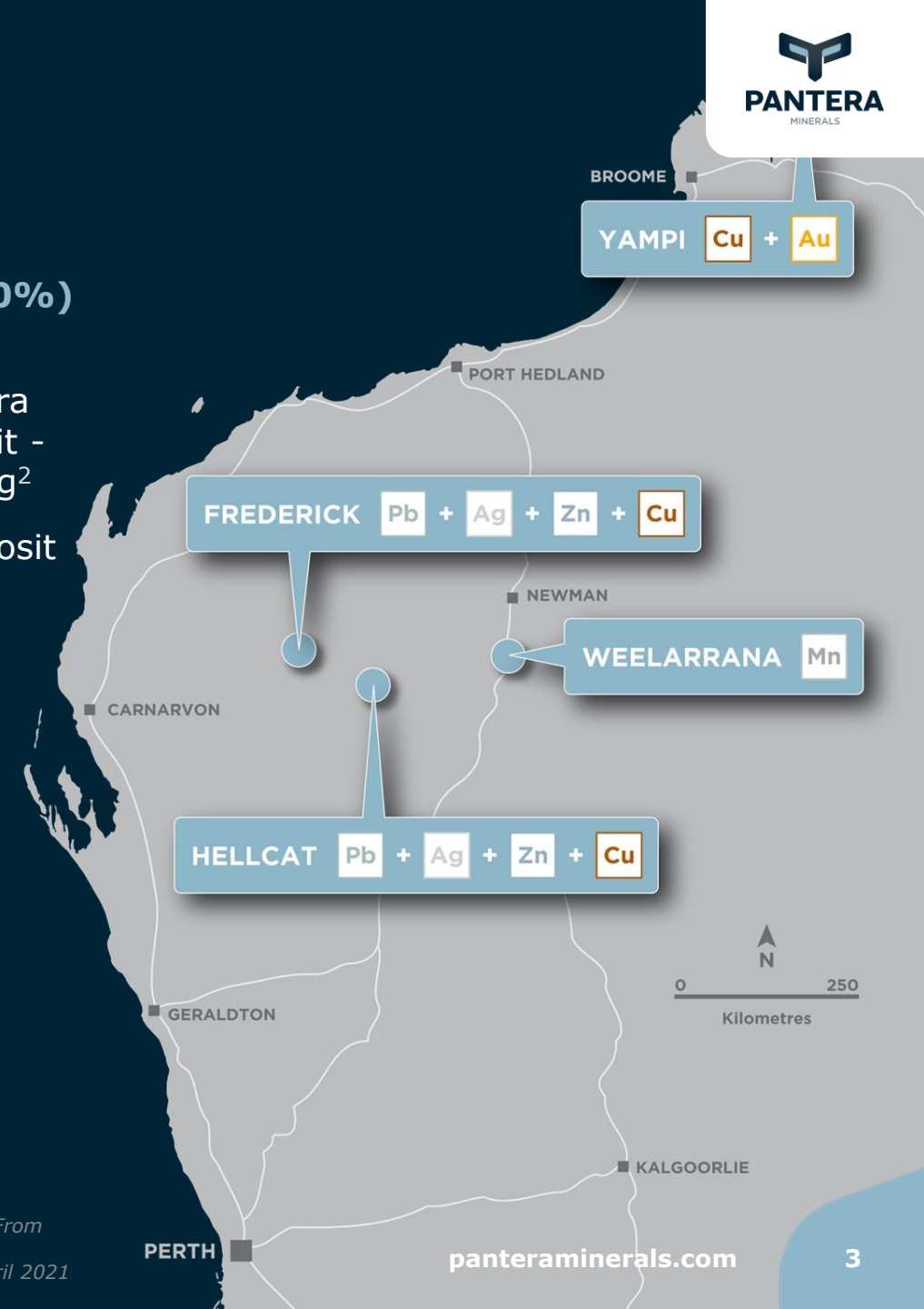
- Rock chip samples grades ranging from 11%Mn to 43%Mn
- Outcropping mineralisation extended to 800m
- Landholding increased to 758 km<sup>2</sup>
- Drilling late July 2022

## Hellcat Base Metals Project (80%)

- Greenfield project-70kms from Galena Mining's (ASX:G1A) Abra Globally Significant Abra Deposit - 34.5Mt @ 7.2% Pb and 16g/t Ag<sup>2</sup>
- Same stratigraphy as Abra Deposit
- 4 drill ready targets
- Drilling late July 2022

## Frederick Base Metals Project

- Pb-Ag-Zn potential
- Similar geological setting to Abra Deposit
- Gravity survey completed



<sup>1</sup>See Dreadnought Resources Limited (ASX:DRE) ASX Announcement – Tarraji-Yampi Project - Further High-Grade Cu-Ag-Au-Co-Zn From Orion Discovery

<sup>2</sup>See Galena Mining Limited (ASX:G1A) ASX Announcement – Galena Achieve 2020 Drilling Objectives At Abra – Updated MRE 28 April 2021

# Driving WA's Next Discovery

## Corporate Overview

### Barnaby Egerton-Warburton Non-Executive Chairman

Over 25 years of investment banking, international investment & market experience with positions at JP Morgan (New York, Sydney, Hong Kong), BNP Equities (New York) and Prudential Securities (New York). He is Chairman of Arizona Lithium and non-executive director of Planning Energy.

### Emmanuel Correia Non-Executive Director

Over 25 years' public company and corporate finance experience in Australia, North America and the United Kingdom and is a founding director of Peloton Capital and Peloton Advisory. An experienced public company director/officer and, prior to establishing Peloton Capital in 2011, he was a founder and major shareholder of Cardrona Capital which specialised in providing advisory services to the small/mid cap market in Australia.

### Nick Payne Head Of Exploration

Over 20 years' experience in the global resource industry with AngloGold, BHP, Cliffs Natural Resources, Mount Gibson Iron, Boart Longyear & Imdex Limited, in a range of roles from Snr Mine Geologist, Snr Exploration Geologist, Exploration Manager, BD Manager and Global Product Manager both within Australia & Canada, with experience in iron ore, gold, copper & coal. Nick was previously the Snr Exploration Geologist & Exploration Manager for Mt Gibson Iron and Cliffs Natural Resources

### Matthew Hansen Chief Executive Officer

A Noongar man & lawyer, 10 years' broad experience. Acted as a sole practitioner advising on energy, resources and regulatory matters providing advice to resources companies, such as Northern Star Resources, Billabong Gold, Western Areas and De Grey Mining with secondments to RIO.

### John Heberton Non-Executive Director

Over 40 years' experience as MD/CEO, Director & Project Manager in the resource industry across Australia, China, Turkey, Germany, UK, Kyrgyzstan & India covering every project phase from exploration to production. A Member of the Australian Institute of Company Directors,, a Fellow of the Institution of Engineers Australia and a Member of the Australasian Institute of Mining & Metallurgy.

### Georgina Clark Exploration – Hellcat & Frederick Projects

Over 18 years' geology experience in Australia and overseas. Proven explorationist with management roles at Lord Resources, NTM Gold & Azumah Resources where she developed exploration programmes, resource upgrades & feasibility studies. A strong background in project review, data compilation/validation & exploration project management.

## Capital Structure

77.5M

SHARES ON ISSUE  
(39% ESCROWED)

\$5.8M

CASH AT 29th April

\$12.8M

FULLY DILUTED  
MKT CAP @ .16C



# Yampi Project

## Copper-Gold Project Identified

### Location & Tenure

- 140km north of Derby – Buccaneer Archipelago
- 2 granted Exploration Licences - E 04/2542 and E 04/2660
- 3 applications – 640km<sup>2</sup>

### Assay Results – 2021 Drilling

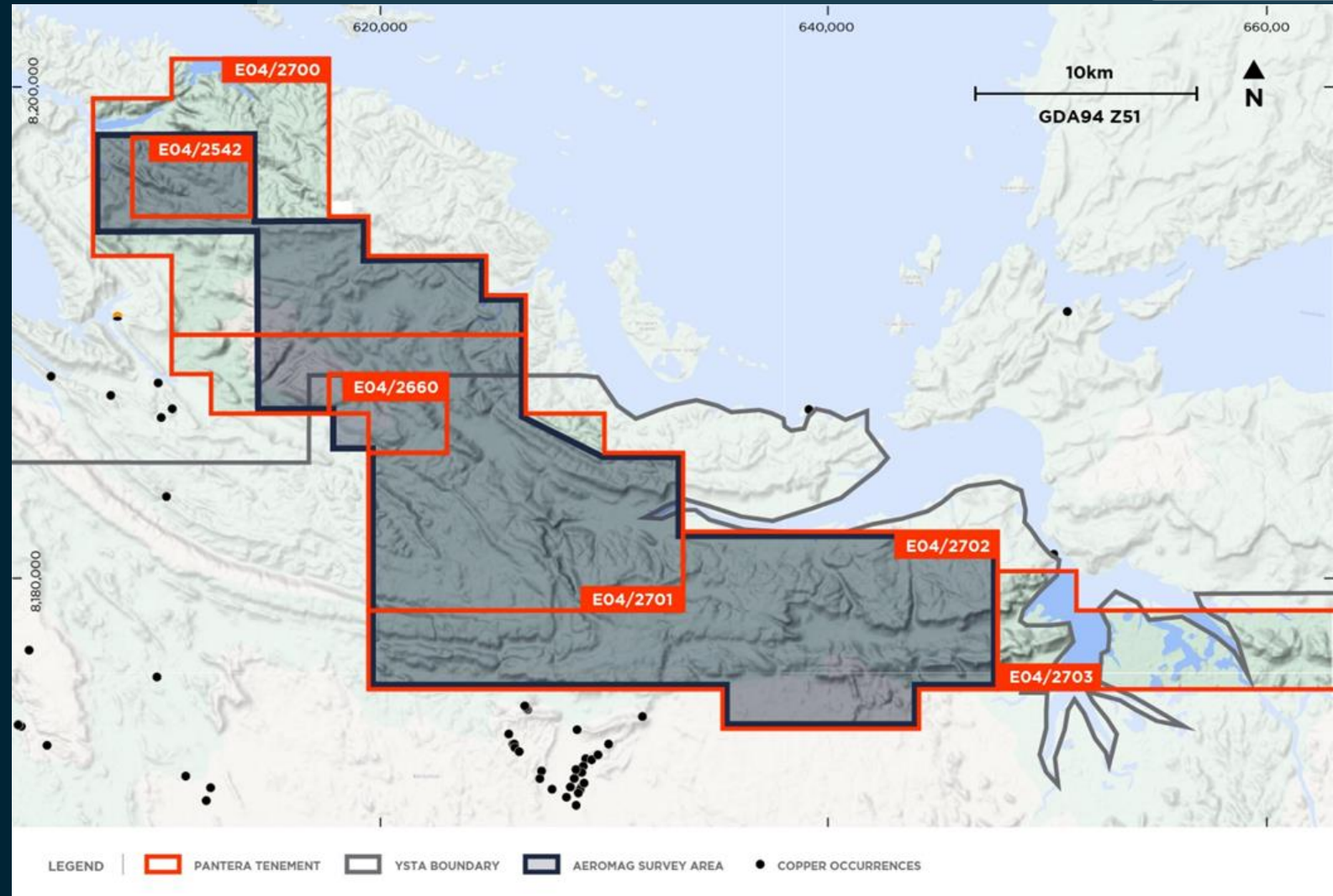
- Results from the 3 diamond holes returned anomalous gold, arsenic, bismuth, molybdenum & antimony detected within hematite alteration
- This geochemistry within hematite alteration is known to be associated with copper-gold porphyry mineralisation
- The outcropping hematite mineralisation at Yampi is now interpreted to be a hematite alteration zone associated with a large hydrothermal mineralization event within the area – possibly a copper-gold porphyry intrusion
- Modelling of existing aeromagnetics has identified a highly magnetic intrusive porphyry like body in E 04/2660



# Yampi Project

## 2022 Focus – Regional Field Work

- Close spaced aeromagnetic and radiometric survey covering 5280-line kms
- Mapping and sampling of the hematite alteration
- Stream and soil sampling to vector to possible copper-gold mineralisation
- Ground gravity survey over E 04/2660
- Interpretation of aeromagnetics/radiometrics, ground gravity & geochemistry
- Development and permitting of drill program for 2023

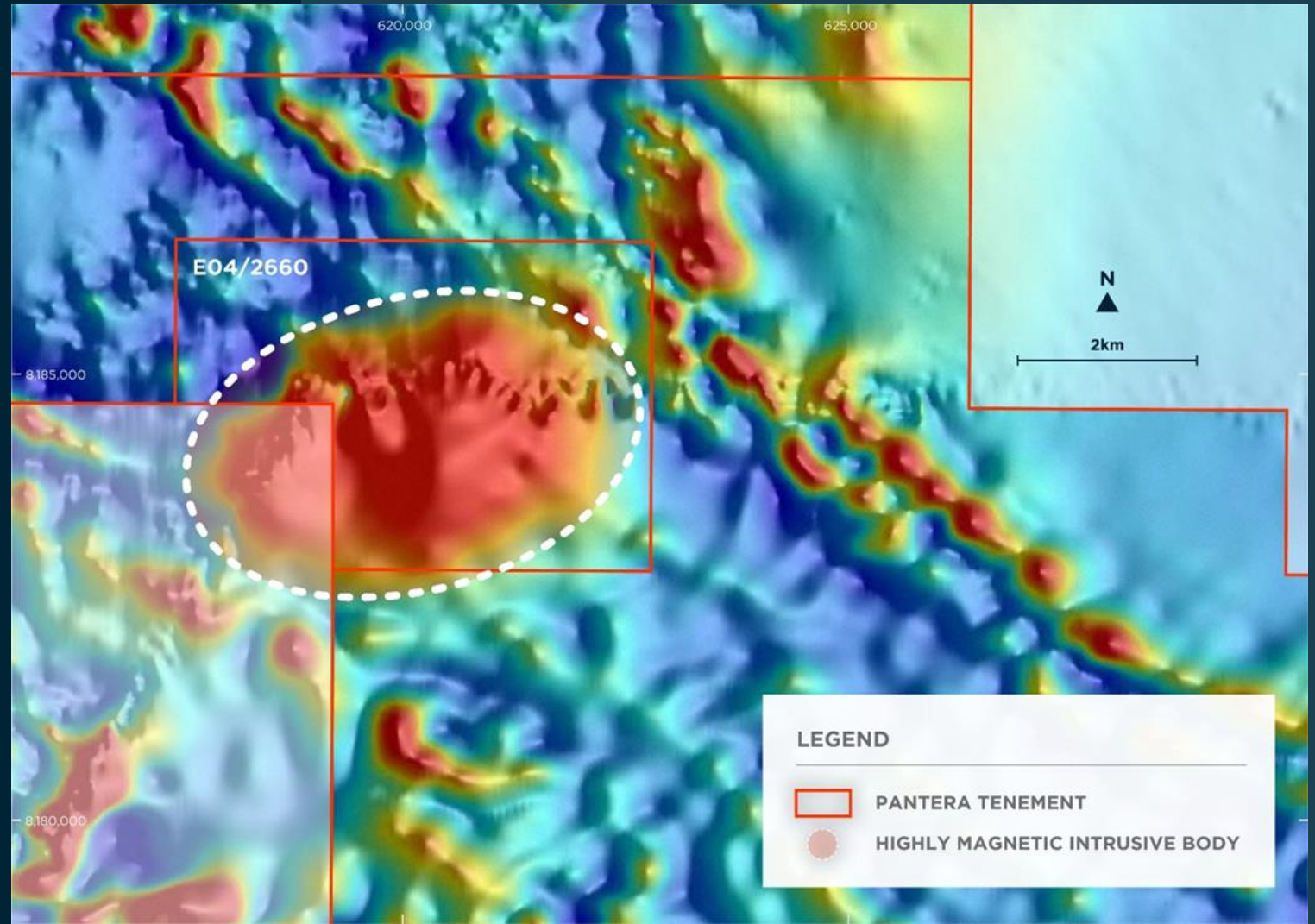




# Yampi Project

## Potential porphyry intrusion

- A cross cutting, highly magnetic, tabular intrusive body has been modelled within EL 04/2660
- Modelling suggests the body is 200m to 300m thick at 300m depth – the magnetism is anomalous
- The intrusion appears to be fault bound to the NW
- Ground gravity and surface geochemical sampling to assist with interpretation and modelling of this intrusion
- Potential EIS diamond hole application for a 2 x 600m deep holes





# Hellcat Project Base Metals

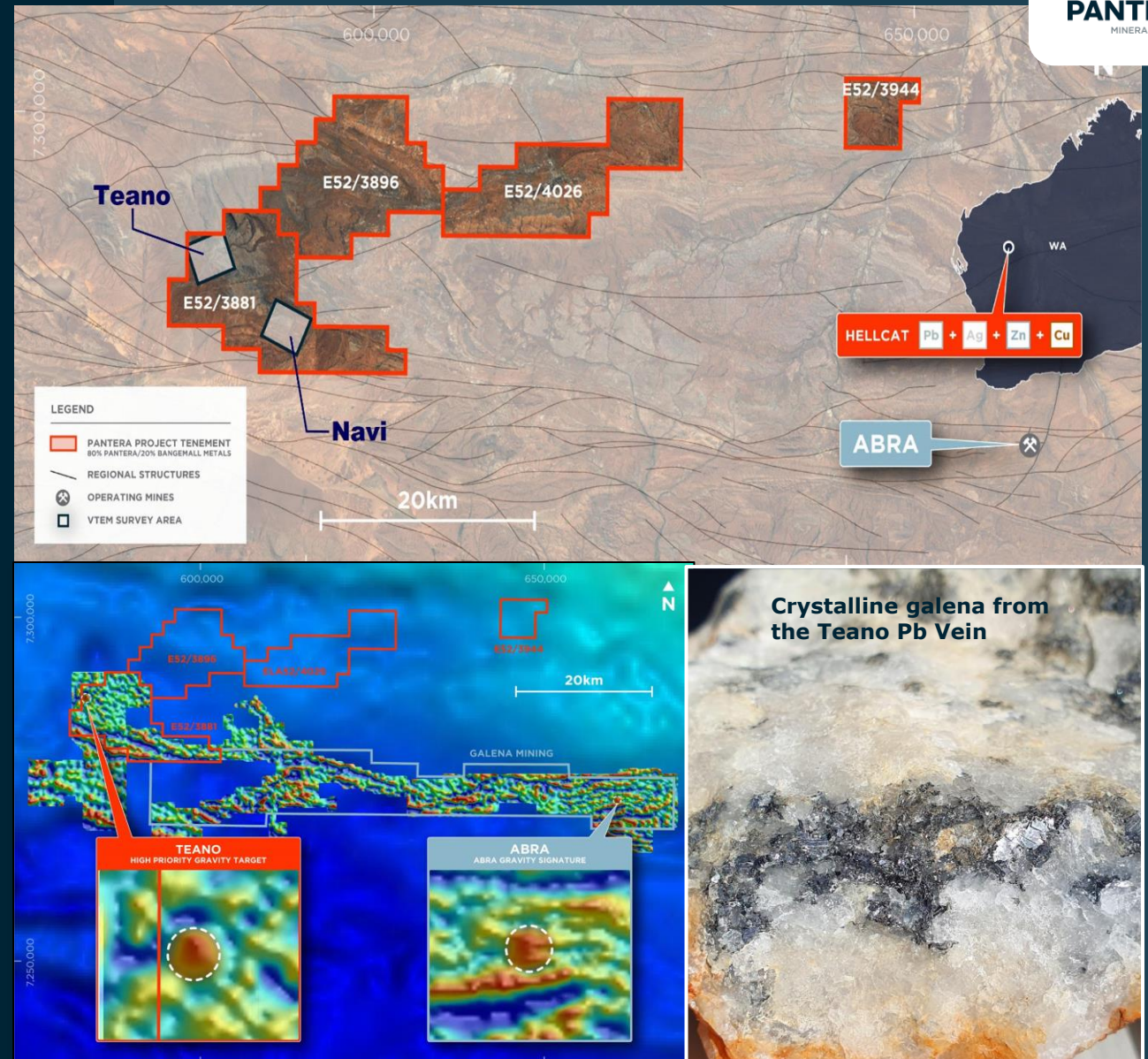
## Drill-ready Project in an emerging base metals region

### Location & Tenure

- 850km north northeast of Perth, 230km northwest of Meekatharra & 220km southwest of Newman
- 4 granted Exploration Licences 442km<sup>3</sup>
- Access via Great Northern Hwy & Mt Augustus-Woodlands Rd, then local station tracks
- Greenfield project within 70km of Galena Mining's (ASX:G1A) globally significant Abra Deposit - 34.5Mt @ 7.2% Pb & 16g/t Ag<sup>1</sup>

### Vendors

- Renowned geophysicists and geologists with extensive knowledge of base metal mineralisation within the Edmund Basin
- Vendors retaining 20% of the project; remain invested and committed to the project



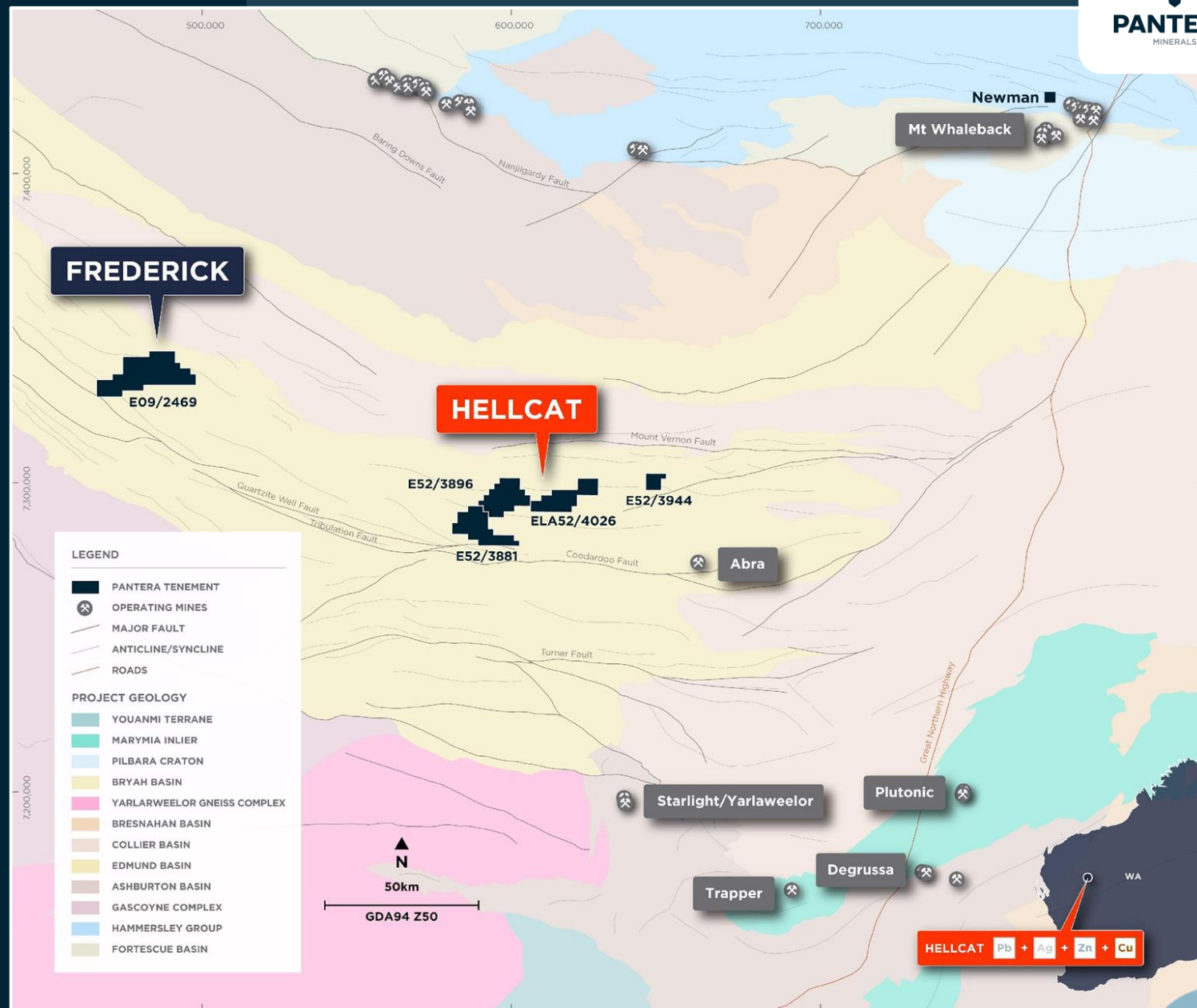
<sup>1</sup>See Galena Mining Limited (ASX:G1A) ASX Announcement – Galena Achieve 2020 Drilling Objectives At Abra – Updated MRE 28 April 2021



# Hellcat Geology

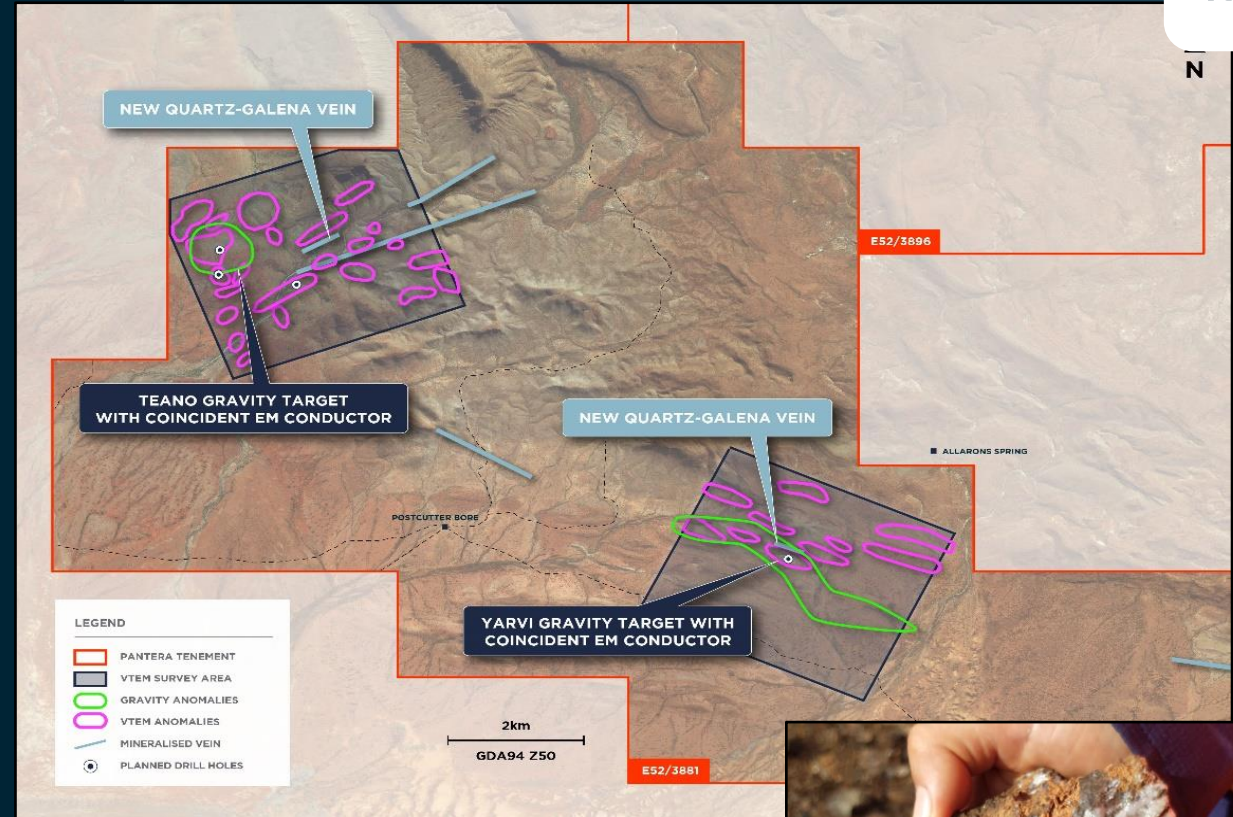
## Right rocks, right structures

- Located within the Edmund Basin, where sediments have been deformed with large scale folding & faulting
- Within same stratigraphic sequence as Abra Deposit, with associated geophysical anomalies, regional structures AND geochemical anomalism
- VTEM survey outlined multiple conductors
- Field reconnaissance identified additional galena mineralisation in outcrop, proximal to geophysical targets
- Mineralised 'Teano Vein' extended by 800m to a strike length of 3500m



# Hellcat - Ticks All The Boxes

- ✓ Geophysical anomalies
  - Gravity
  - EM
- ✓ Geochemical anomalies
  - Fresh Galena – observed within carbonate host
  - High lead & silver rock chip samples<sup>4</sup>
    - 10.9% Pb - 66g/t Ag
    - 1.0% Zn - 0.3% Cu
- ✓ Structural setting
  - Anticline – pushed up from below
  - Within regional scale syncline
- ✓ Stratigraphic / Lithological setting
  - Irregully / Kiangu contact – same as Abra



**Heritage & Cultural survey late May 2022**

**Four diamond drill holes schedule to commence late July 2022 – Approval for 18 holes**

<sup>4</sup> See PFE ASX Announcement 21 Dec 2021



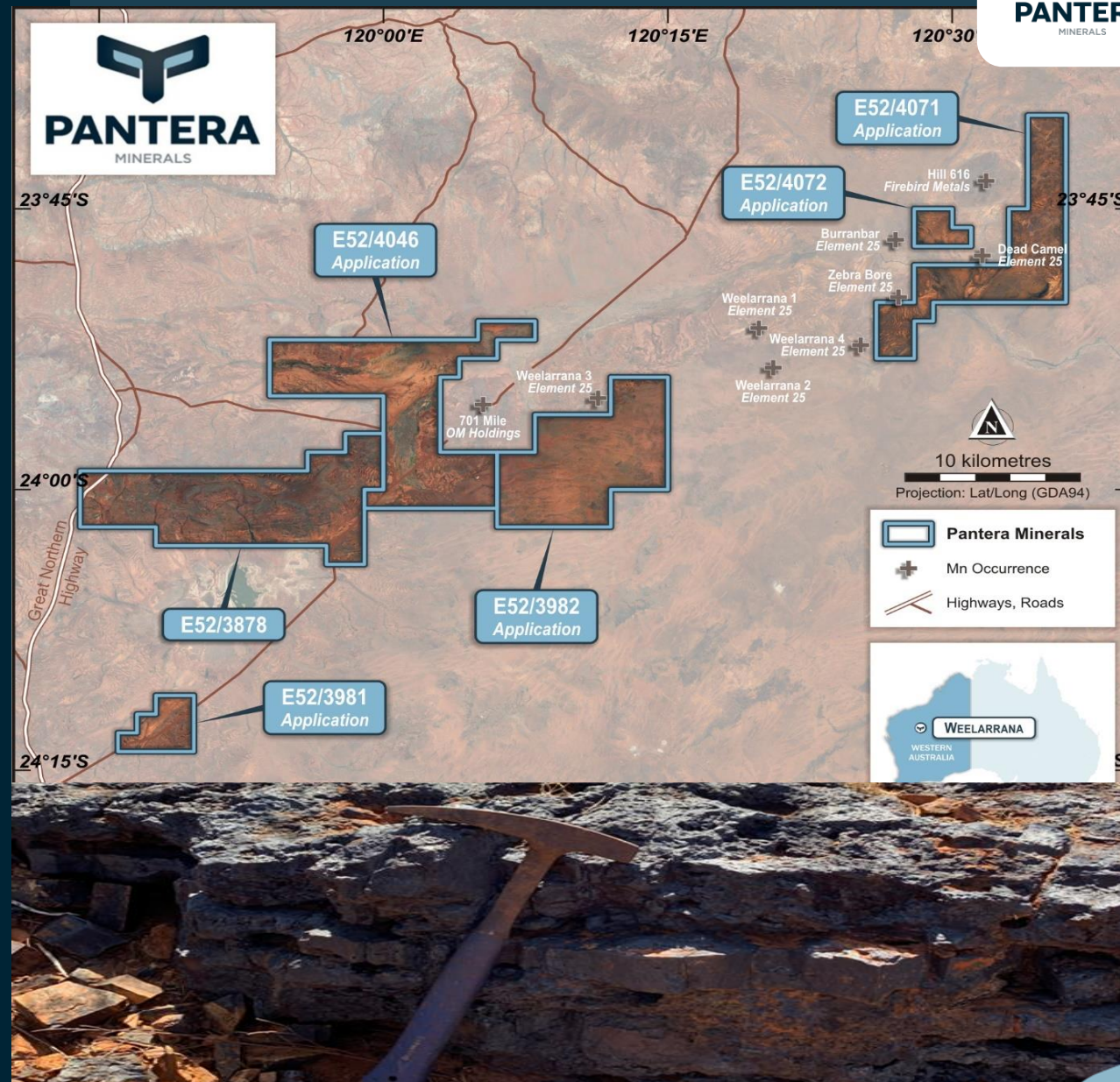
# Weelarrana Manganese Project

## Land holding increasing

### Location & Tenure

- Located 75km south of Newman, access via Great Northern Highway and Jigalong Mission Road
- 1 granted Exploration Licence, 5 applications – 758km<sup>2</sup>
- All of the tenement applications prospective for high grade manganese mineralisation
- Butcherbird Project (ASX:E25) <45km south
  - Mining reserve of 50.6 Mt @ 10.3% Mn (Proven and Probable) and total resource of 263 Mt @ 10.0% Mn<sup>5</sup>

<sup>5</sup> See Element 25 Limited (ASX:E25) ASX Announcement Re-release of announcement with HORC 2012 Information 26 Aug 2021





# Weelarrana Manganese Project

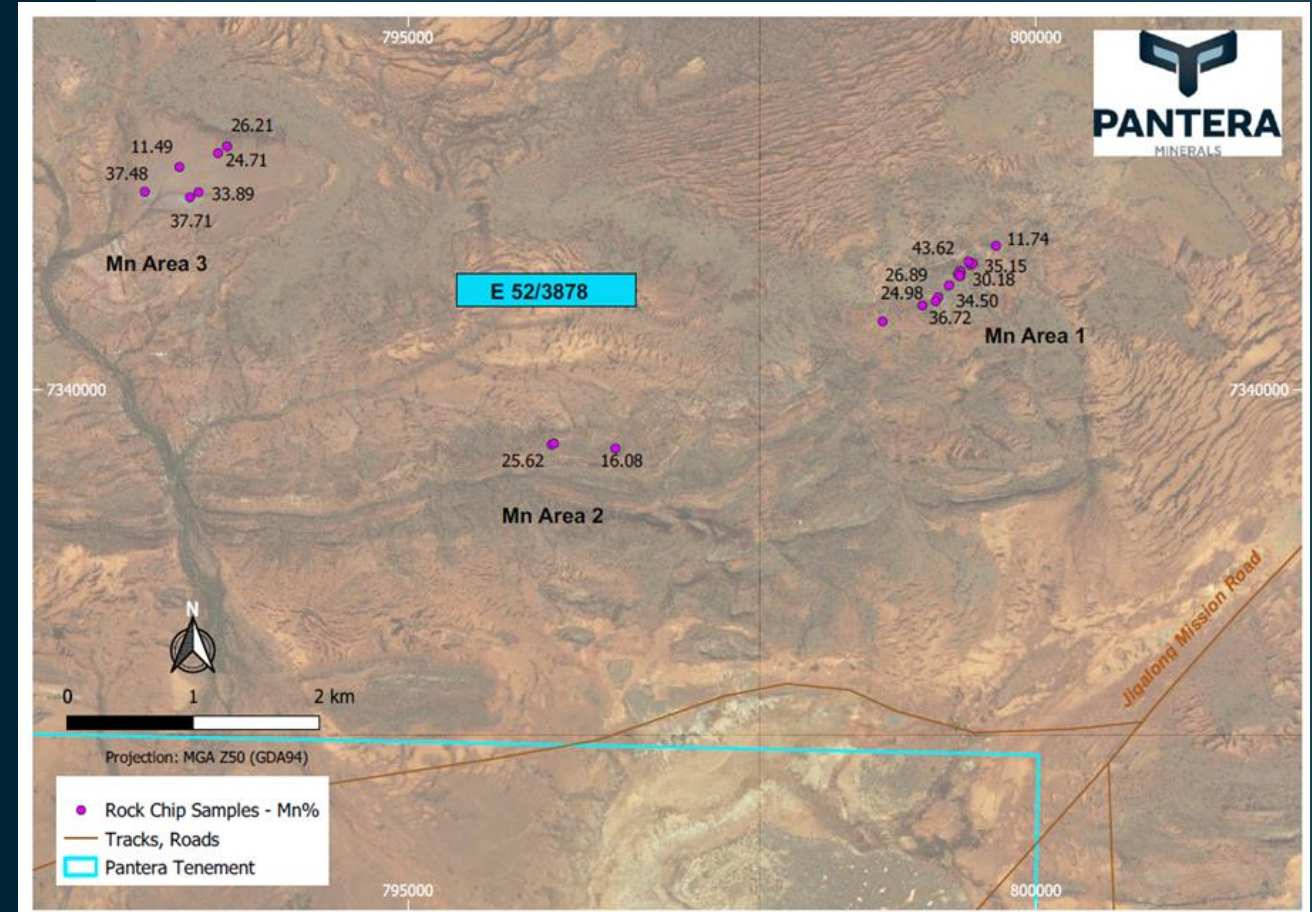
## High grade mineralisation confirmed

- 22 rock chip samples taken with grades ranging from 11%Mn to 43%Mn<sup>6</sup>
- Strike length of previous identified outcropping mineralisation extended from 280m to 800m
- Two further high-grade manganese targets identified by mapping & field reconnaissance

**Heritage & Cultural survey early June 2022**

**RC drilling schedule to commence late July 2022**

**Drill planning and permitting underway for second drill program – expected Q4 2022**



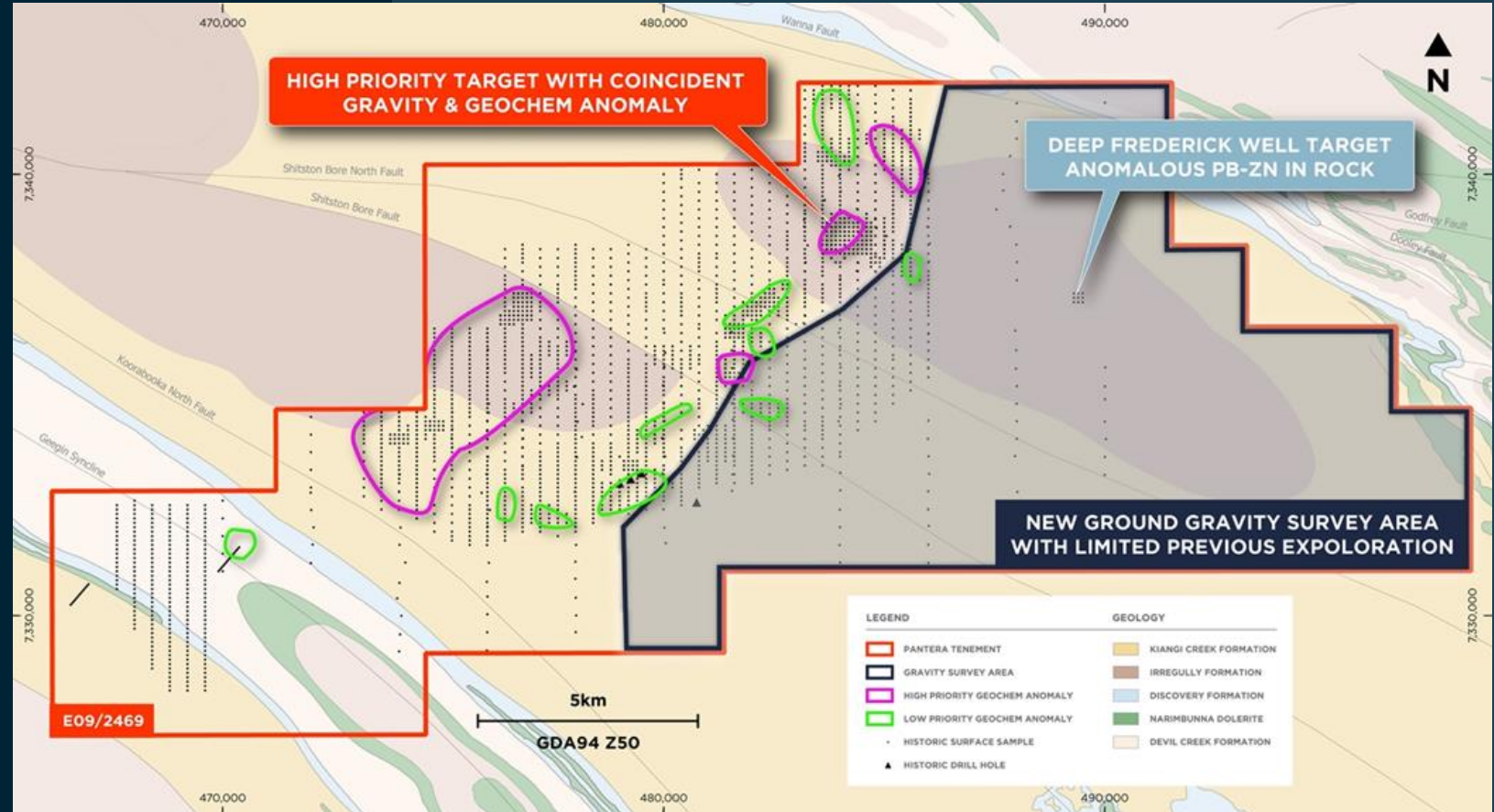
<sup>6</sup> PFE ASX Announcement dated 3 May 2022



# Frederick Base Metal Project

## Location & Tenure

- Located 310km southwest of Newman, Gascoyne region of Western Australia
- 1 granted Exploration Licence– 278km<sup>2</sup>
- Sedimentary hosted base metals sedimentary (Pb-Ag-Zn ± Au-Cu)
- Located <170km west northwest of the world-class Abra Project (ASX:G1A) in the same stratigraphy with similar geophysical and geochemical characteristics



**Ground gravity survey completed and further geochemical surveying planned to help define drill targets**

# Driving Western Australia's Next Major Discovery

## Hellcat, Weelerrana & Frederick Projects to be drill tested

	Q2 - 2022	Q3 - 2022	Q4 - 2022	Q1 - 2023
<b>Yampi Project</b>	Aeromag/ Radiometric Survey	Mapping & Geochemical Survey	Data Interp & Planning	Permitting
<b>Hellcat Project</b>	Diamond Drilling	Geophys Surveys & Targeting	Follow Up Drilling	
<b>Weelarrana Project</b>	Heritage Survey & Permitting	RC Drilling	Interp & Planning	Follow Up RC Drilling
<b>Frederick Project</b>	Ground gravity Interp & Planning		Permitting	Drilling

For personal use only





# Why Invest

**Drilling imminent across two exciting projects**

For personal use only



## Discovery-Ready Projects

Exposure to 4 separate projects – Au, Cu, Pb, Ag, Zn & Mn



## Project Locations

Four discovery ready projects located in Tier 1 mining jurisdictions



## Funded to Explore

Pantera fully funded to execute exploration programs



## High Impact Activities

High impact drilling campaigns planned imminently with ongoing newsflow



## Contact Information

**Barnaby Egerton-Warburton**  
Non-Executive Chairman

[bew@modenaventures.com](mailto:bew@modenaventures.com)

**Matt Hansen**  
CEO

+61 8 9467 2604  
[matthansen@panteramineral.com](mailto:matthansen@panteramineral.com)

**ASX:PFE**