



LATIN
RESOURCES

RIU EXPLORERS PRESENTATION

February 2022

DISCLAIMER



This presentation and any oral presentation accompanying it has been prepared by Latin Resources Limited ("LRS " or the "Company"). It should not be considered as an offer or invitation to subscribe for or purchase any securities in the Company or as an inducement to make an offer or invitation with respect to those securities. No agreement to subscribe for securities in the Company will be entered into on the basis of this presentation.

This presentation contains forecasts and forward-looking information. Such forecasts, projections and information are not a guarantee of future performance, involve unknown risks and uncertainties. Actual results and developments will almost certainly differ materially from those expressed or implied. LRS has not audited or investigated the accuracy or completeness of the information, statements and opinions contained in this presentation. Accordingly, to the maximum extent permitted by applicable laws, LRS makes no representation and can give no assurance, guarantee or warranty, express or implied, as to, and take no responsibility and assume no liability for, the authenticity, validity, accuracy, suitability or completeness of, or any errors in or omission, from any information, statement or opinion contained in this presentation.

You should not act or refrain from acting in reliance on this presentation material. This overview of LRS does not purport to be all inclusive or to contain all information which its recipients may require in order to make an informed assessment of the Company's prospects. You should conduct your own investigation and perform your own analysis in order to satisfy yourself as to the accuracy and completeness of the information, statements and opinions contained in this presentation before making any investment decision.

Competent Person's Statement

Information in this document that relates to Exploration Results and Exploration Targets is based on information completed by Mr Anthony Greenaway, who is a member of the Australasian Institute of Mining and Metallurgy. Mr Greenaway is a full-time employee of Latin Resources Ltd and has sufficient experience which is relevant to the style of mineralisation and types of deposits under consideration and to the activities undertaken to qualify as a Competent Person as defined in the 2012 Edition of the "Australian Code for Reporting of Mineral Resources and Ore Reserves". Mr Greenaway consents to the inclusion in this report of the matters based on information in the form and context in which it appears.

No new information that is considered material is included in this document. All information relating to exploration results has been previously released to the market and is appropriately referenced in this document. JORC tables are not considered necessary to accompany this document.

CORPORATE OVERVIEW – ASX:LRS FRA:XL5



LRS

ASX Code

\$2.2M

Cash and Investments
(As at 31 December 2021)

\$43M

Market Cap
(As at 31/01/2022)

1,433m

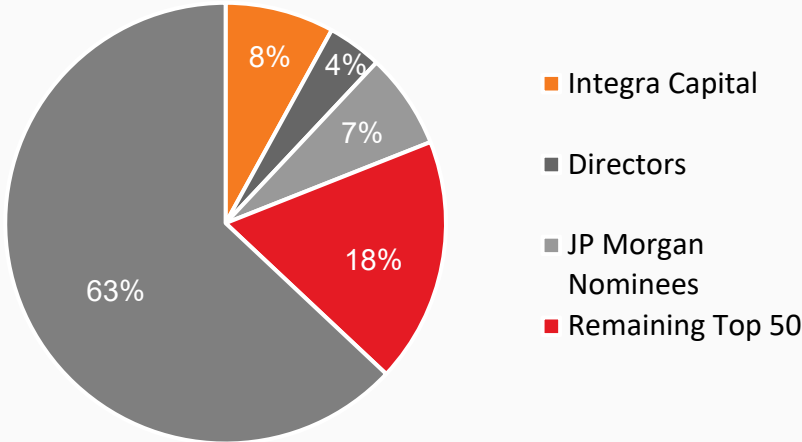
Shares on Issue

498.3M

Unlisted Options

\$40.8m

Enterprise Value



LATIN'S STRATEGY

To discover, delineate and develop mineral projects in commodities that progress global efforts towards Net Zero emissions.

- ▶ **Lithium – Electric Vehicles and storage**
- ▶ **Copper - Electric Vehicles and storage**
- ▶ **Halloysite – Methane reduction – Agricultural**
- ▶ **Kaolin – High Purity Alumina**



LATIN'S GLOBAL PROJECT PORTFOLIO



For personal use only



LITHIUM AND COPPER PROJECTS SOUTH AMERICA

For personal use only

Peru Copper

- MT-03 Copper Project

Chile – Copper

- Solis Minerals (14%) investment

Brazil Lithium

- 100% owned Salinas Lithium Project,
Minas Gerais

Argentina Lithium

- Catamarca Lithium Project



LITHIUM IN BRAZIL

Opportunity and lithium potential in Minas Gerais District

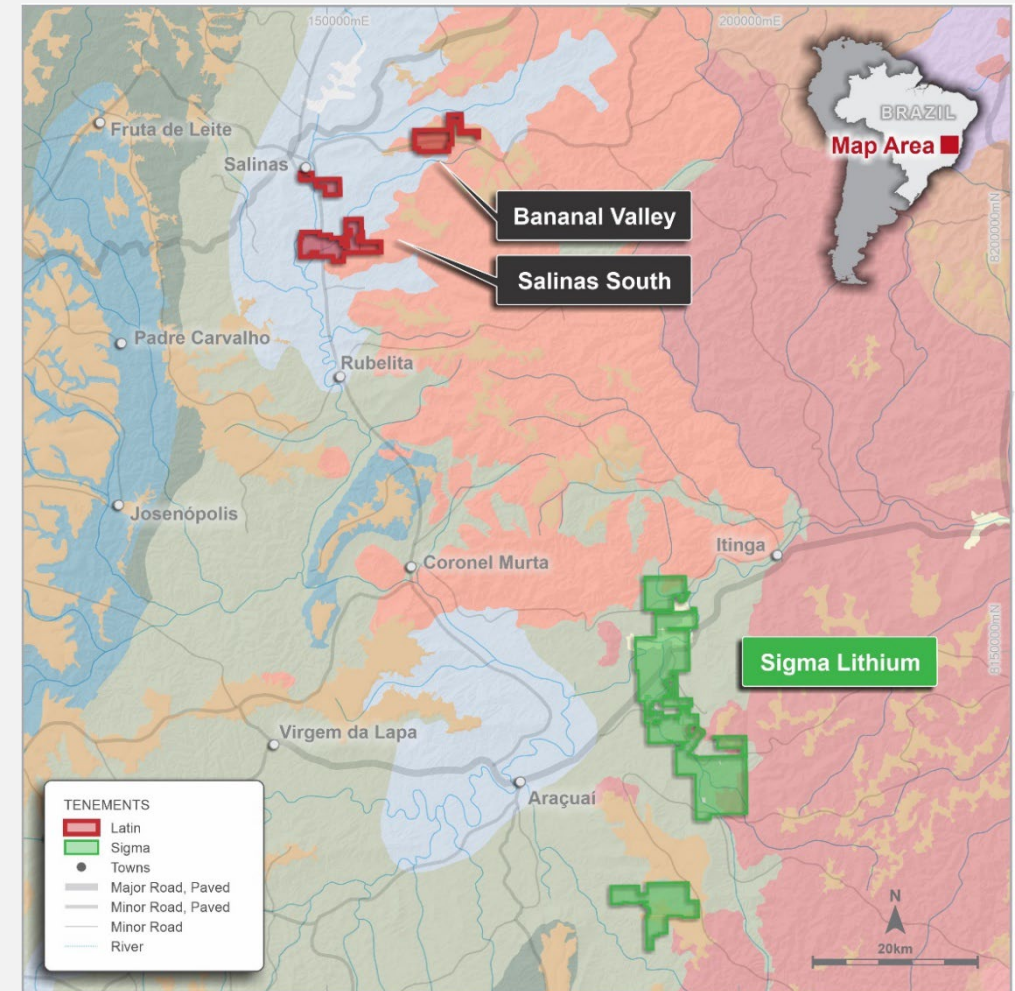
- ▶ Brazil is the world's 8th largest economy and Latin America's largest and pro mining jurisdiction.
- ▶ *Minas Gerais is vastly under-explored for lithium, high discovery potential of world class lithium spodumene deposits.*
- ▶ *Large lithium pegmatite occurrences – new areas only being recently discovered.*
- ▶ CBL actively producing lithium hydroxide at their Divisa Alegre chemical plant in MG.
- ▶ *Sigma is developing a world class lithium plant at its Grota do Cirilo property in Minas Gerais Brazil.*
- ▶ Companies easily obtain permits to explore and drill.
- ▶ *Superior mining infrastructure and services.*



SALINAS LITHIUM PROJECT MINAS GERAIS, BRAZIL

- ▶ Located in the NE of Minas Gerais
- ▶ 600km NE of Belo Horizonte
- ▶ 128KV powerline from 360MV Irape Hydraulic Power station runs through prospects
- ▶ Located ~100km North from Sigma Lithium's Grota do Cirilo Lithium Mine
- ▶ 5-minute drive to Salinas town (pop. 40,000)
- ▶ 5,338 Hectares across two prospect areas, Salinas South and Bananal Valley
- ▶ Outcropping spodumene pegmatites mapped over 4km²
- ▶ Rock chip sampling returned adjacent samples grading 2.71% Li₂O and 1.45% Li₂O*
- ▶ Drilling has commenced in February 2022, 14 holes – 2000 metres

*Refer to ASX Announcement dated 26 October 2021



BANANAL VALLEY PROSPECT SALINAS LITHIUM PROJECT

Multiple zones of spodumene pegmatites intersected in first hole

Highlights

- ▶ The first diamond hole drilled at the Salinas Lithium Project in Brazil **has intersected three separate spodumene pegmatites** down dip from high-grade outcropping lithium*.
- ▶ **Potential new lithium discovery** in one of the world's best mining jurisdictions.
- ▶ Priority drill targets were identified through surface sampling which **returned high-grade results including 2.71% Li₂O# and 1.45% Li₂O# from spodumene bearing pegmatites**, mapped over a strike length of over 1.2 kilometres.
- ▶ The Company plans to drill 14 diamond holes for a total of **2,000m of drilling in the first phase of drilling.**
- ▶ The Bananal Valley is located within the Minas Gerais state – a rich mining region of Brazil, and home to the Grota do Cirilio Lithium Project **under development by CAD \$1.3 billion market cap TSX-V listed Sigma Lithium Corporation.**

*Refer to ASX Announcement dated 16 February 2021

#Refer to ASX Announcement dated 26 October 2021

In relation to the disclosure of visual results, the Company cautions that visual estimates of mineral abundance should never be considered a proxy or substitute for a laboratory analysis. Assay results are required to determine the widths and grade of the visual mineralisation in preliminary geological logging. The Company will update the market when laboratory results become available.



Figure 2: SADD001 - 5.25m thick coarse-grained pegmatite (83.85-89.10m), containing abundant light green spodumene crystals, hosted within a biotite-quartz schist (black rock)

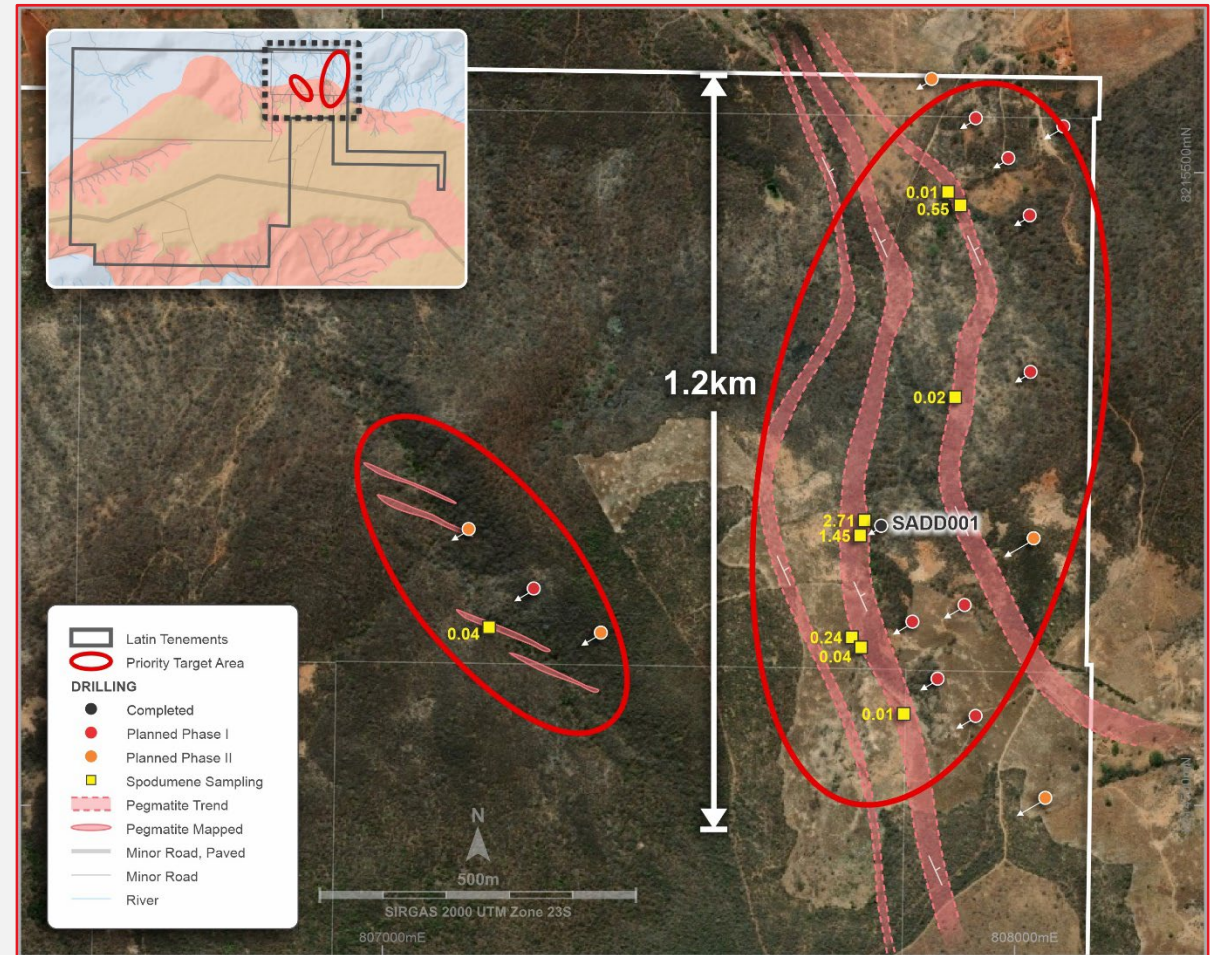
BANANAL VALLEY PROSPECT SALINAS LITHIUM PROJECT

Salinas Lithium Project

- ▶ The intersection of multiple **spodumene pegmatites** down dip from the high-grade outcrop (**2.71% Li₂O** and **1.45% Li₂O**)*, in the first hole drilled proves Latin's concept for the region and **has greatly enhanced the potential for a significant lithium discovery in the Bananal Valley.**
- ▶ The hole SADD001 intersected a number of zones of **spodumene-rich pegmatite up to 5.25 m thick[#]** (Figure 2) and is currently at a drill depth of approximately 90m and is planned to continue to a depth of 120m or when mineralisation finishes.
- ▶ The geological team expect to see **thicker zones as these pegmatites are known to pinch and swell** as evidenced in the Company's surface mapping and sampling.

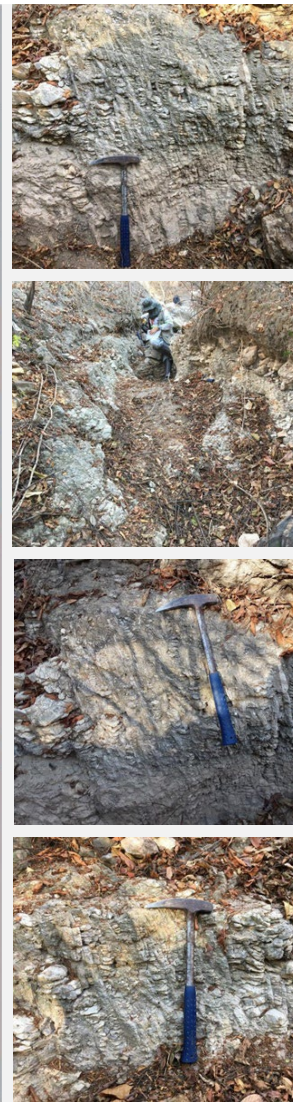
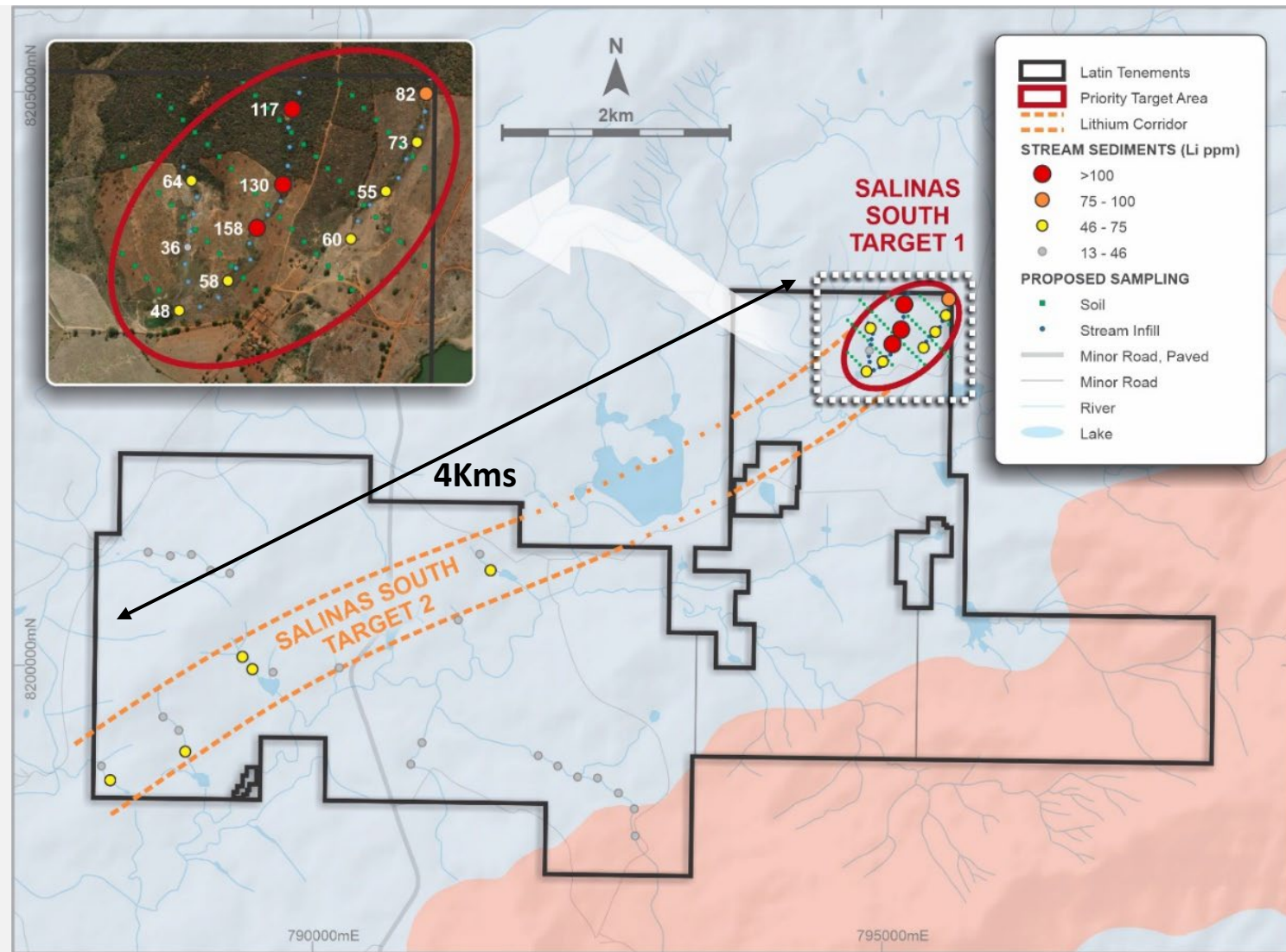
*Refer to ASX Announcement dated 26 October 2021

[#]Refer to ASX Announcement dated 16 February 2021



SALINAS SOUTH PROSPECT SALINA PROJECT

- ▶ Latin has identified outcropping pegmatites containing spodumene over a strike of 4km.
- ▶ Regional reconnaissance stream sediment sampling of the Salinas South Project to the southwest has highlighted an anomalous lithium corridor extending across the Project.
- ▶ Drilling planned along strike after Salinas South completed.
- ▶ Additional tenure acquisitions have increased landholding to 4,088 hectares.



CATAMARCA LITHIUM PROJECT

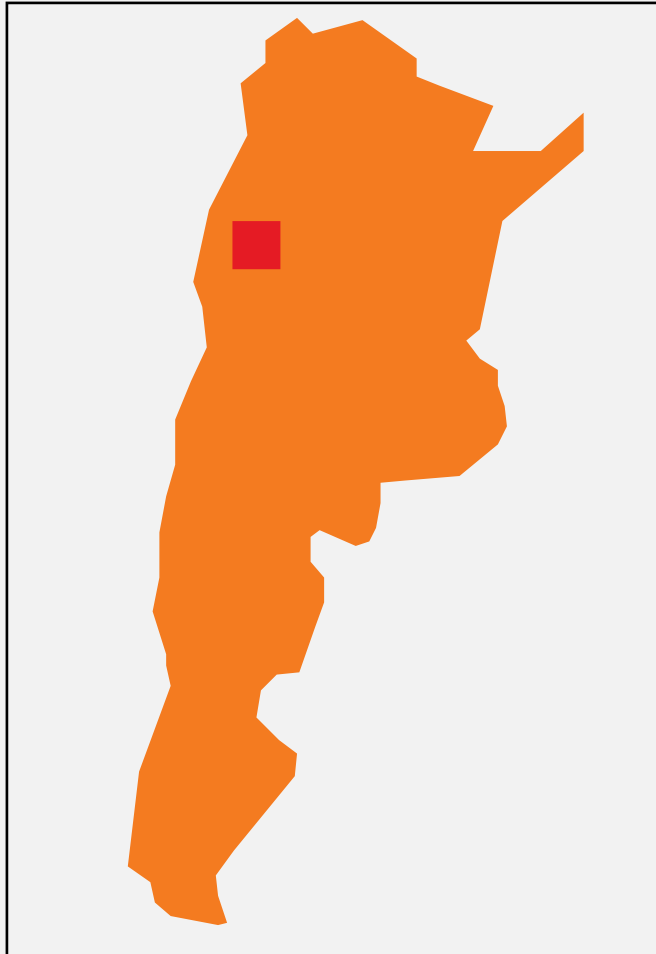
Lithium Exploration

- ▶ LRS has the largest hard rock spodumene landholding in Argentina
 - Over 70,000 hectares controlled by LRS
- ▶ Under-explored spodumene pegmatite swarms
- ▶ Potential to host world class lithium deposit
- ▶ JV with Integra Capital
- ▶ US\$1m into Catamarca for 50% of the Project
- ▶ **New 2022 work plans currently being finalised with field work to commence in March**



CATAMARCA NW ALTO / NORTH ANCASTI

OVER 70,000 HECTARES



North West Alto

New Exploration March 2022

Villisman Project

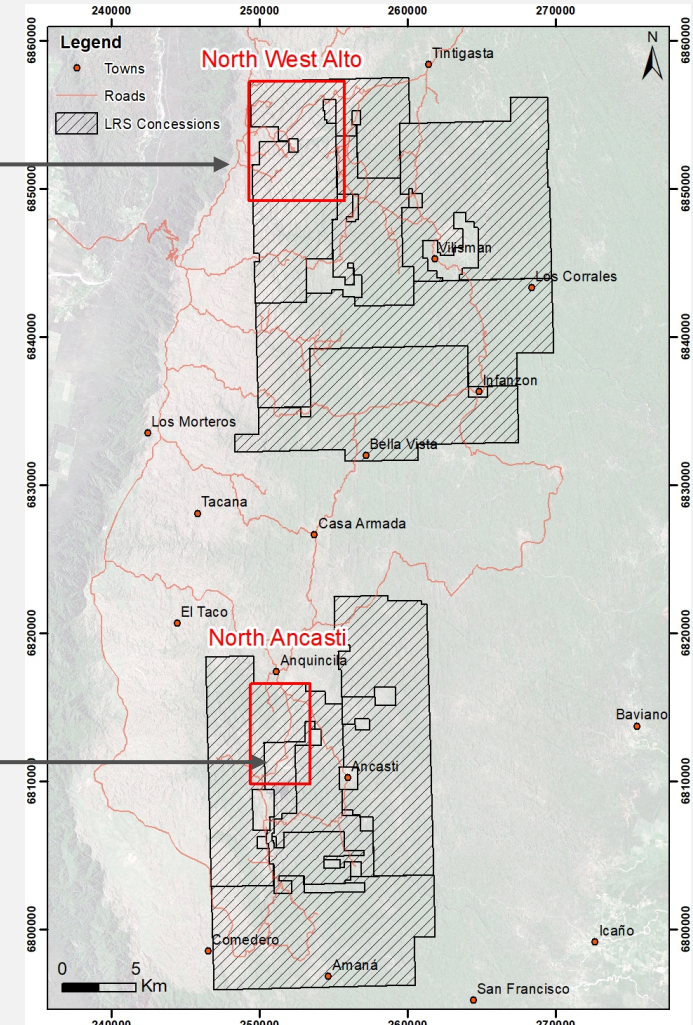
Previous drilling intercepts include*:

- ▶ 3m @ 2.98% Li₂O
- ▶ 5.2m @ 1.62% Li₂O
- ▶ 6m @ 2.40% Li₂O
- ▶ 7m @ 2.17% Li₂O

Ancasti Project

North Ancasti

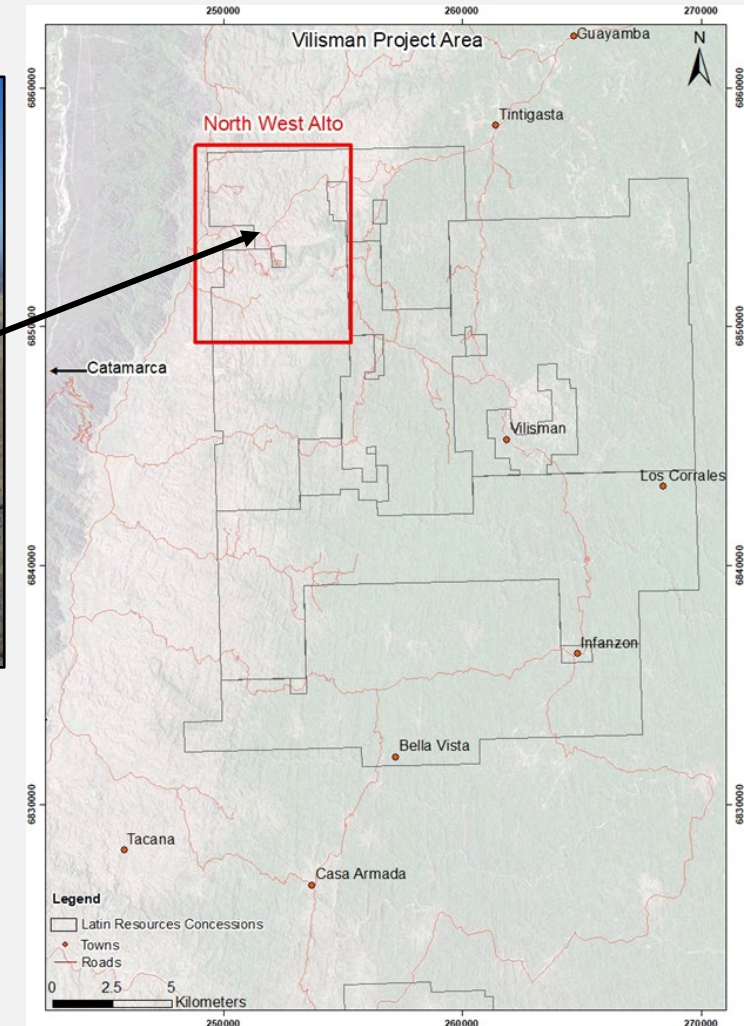
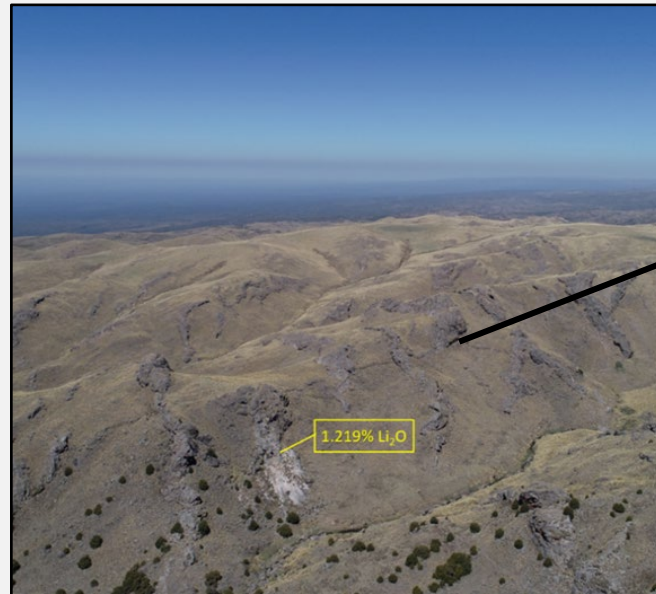
* Refer ASX announcement; 26/04/17



CATAMARCA NW ALTO – New Exploration work ,2022

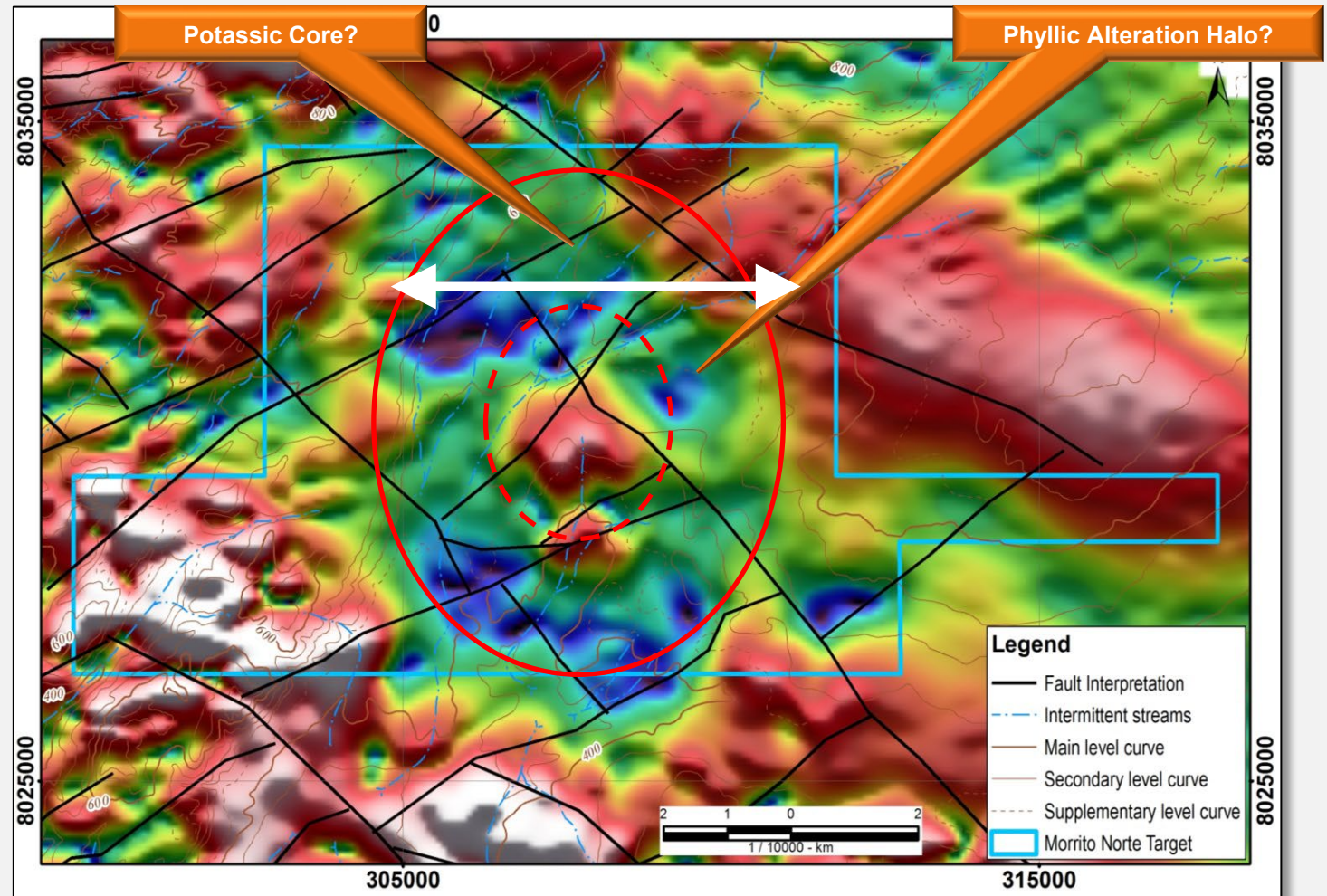
North West Alto

- ▶ Highly prospective for lithium bearing pegmatites of considerable size.
- ▶ External zones exposed to geologists for mapping – therefore methods of fractionation interpretation are employed.
- ▶ Rock chipping and soil sampling continues over the region.
- ▶ Recently identified Lithium of 1.219% Li_2O in the only exposed mine of the area.
- ▶ Encouraged by the presence of lithium in the NW Alto system.
- ▶ Further work being conducted to identify drill targets.



MT03 PROJECT SOUTHERN PERU

- ▶ Ground magnetic survey completed over the MT-03 prospect.
- ▶ SGS Perth have completed the modelling of the data and have advised LRS of proposed drill testing of the magnetic anomaly.
- ▶ Drill permitting has commenced.
- ▶ Drilling anticipated for Q2 2022.





Cloud Nine Halloysite-Kaolin Deposit

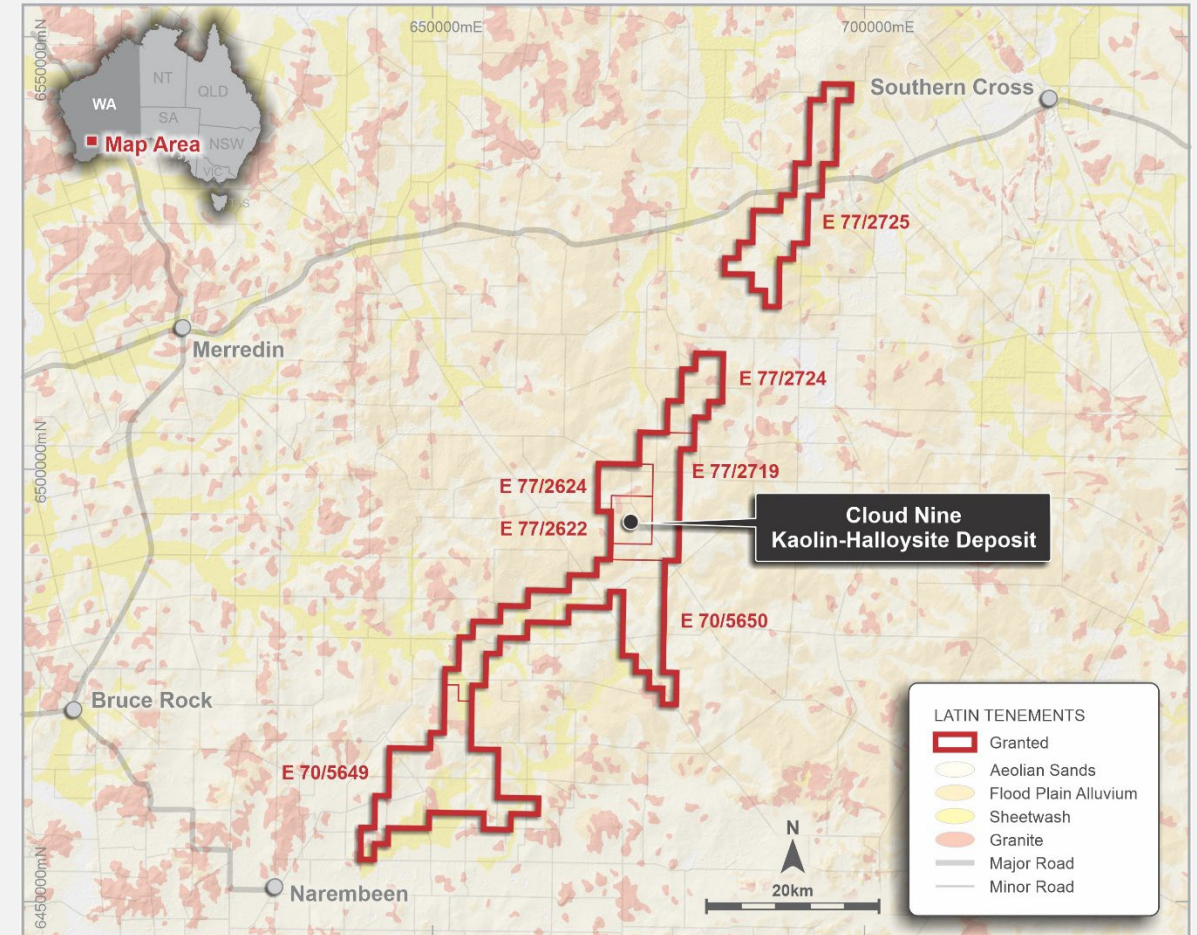
- ▶ Halloysite-Kaolin Project
- ▶ Large JORC Defined Mineral Resources
- ▶ Infill drilling in early 2022
- ▶ PFS underway, expected Q2 2022
- ▶ Focus on developing DSO product for rapid cashflow

CLOUD NINE HALLOYSITE-KAOLIN DEPOSIT

MERREDIN, WA



- ▶ Drilling has identified a bright white kaolinite zone and a kaolin-halloysite zone that generally occurs at depth, closer to the base of weathering.
- ▶ Latin is advancing studies for the development of a DSO operation for the bright white kaolin zone, targeting traditional markets in Asia.
- ▶ Concurrently, research and testwork has commenced on the best ways to separate the halloysite material as well as new downstream markets for halloysite.



CLOUD NINE HALLOYSITE-KAOLIN DEPOSIT

CLOUD NINE MAIDEN 207 MT JORC RESOURCE

Maiden JORC Mineral Resource:

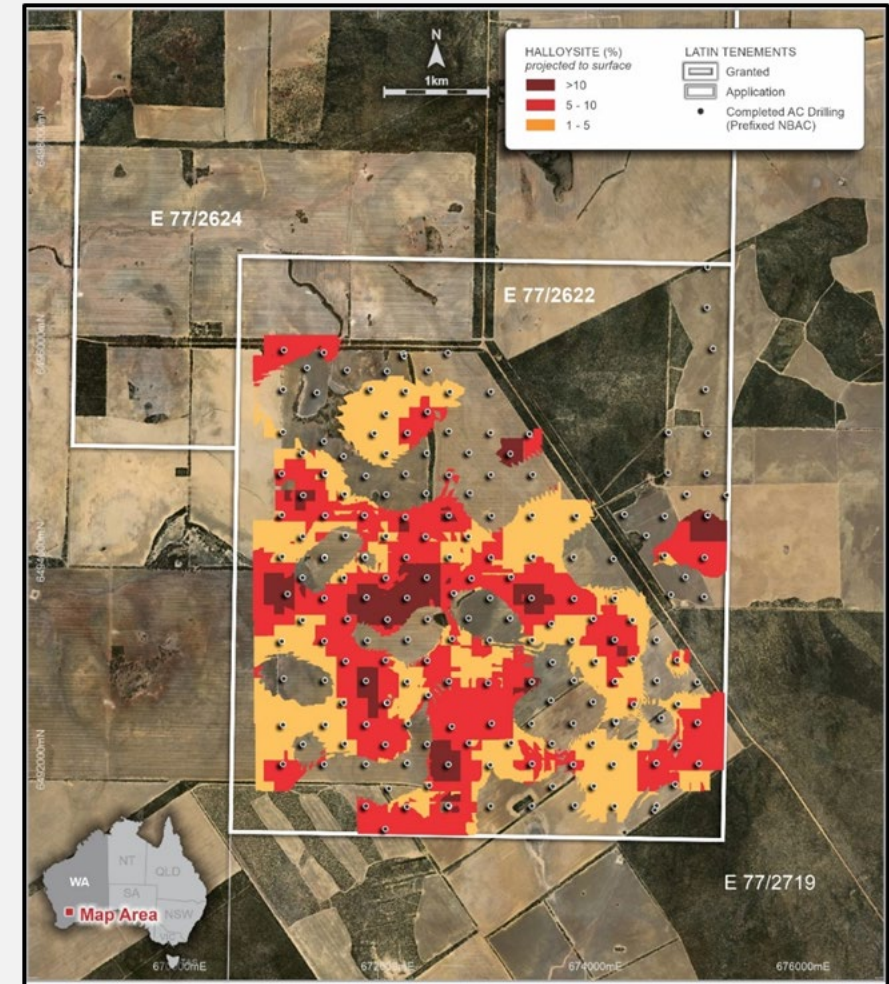
- ▶ 207Mt of kaolinised granite comprising:
 - 123 million tonnes of bright white kaolin-bearing material; and
 - 84 million tonnes of kaolin/halloysite-bearing material.

Domain	Mt	PSD -45µm	Brightness (ISO-B)
Kaolin Domain	123	42	79
Kaolin/Halloysite Domain	84	42	80
Total	207	42	79

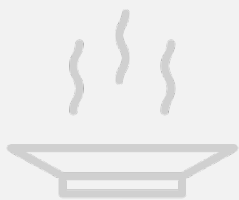
- ▶ The halloysite sub-domain yields 50Mt grading 6% halloysite using 1% halloysite cut-off, or 27Mt grading 8% halloysite using a 5% halloysite cut-off within the minus 45-micro (45 µm) subfraction.
- ▶ Kaolinised granite Resource contains a total of 75Mt of bright white (+75 ISO-B) Kaolin product with an ISO-B of 79 in the -45 µm size fraction, or 29Mt of ultra-bright white (+80 ISO-B) kaolin product with an IOS-B of.

Domain	Mt	Brightness (ISO-B)	Kaolinite (%)	Halloysite (%)	Al ₂ O ₃ (%)	Fe ₂ O ₃ * (%)	TiO ₂ * (%)
Kaolin	52	79	87	0	35	1	1
Halloysite	35	80	78	6	35	1	1
Total	87	79	83	3	35	1	1

*Refer to ASX Announcements dated 24/2/2021, 10/3/2021, 17/3/2021, 8/4/2021 and 28/4/2021 for full details and JORC Tables



HALLOYSITE USE AND MARKETS



CERAMICS

Halloysite clays produce very bright, white ceramics that achieve premium pricing



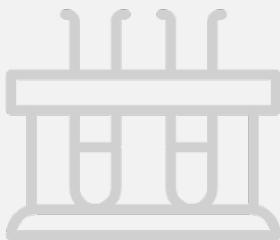
METHANE SUPPRESSION

Due to the tubular nature, halloysite clays trap greenhouse gases such as methane and carbon dioxide



SUPERCAPACITOR BATTERIES

Used as an electrode material for electrochemical energy storage



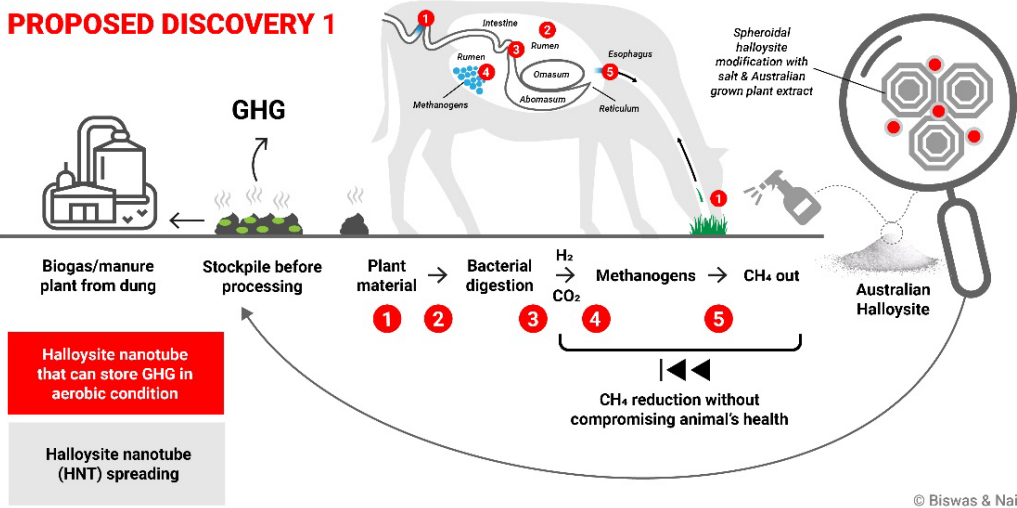
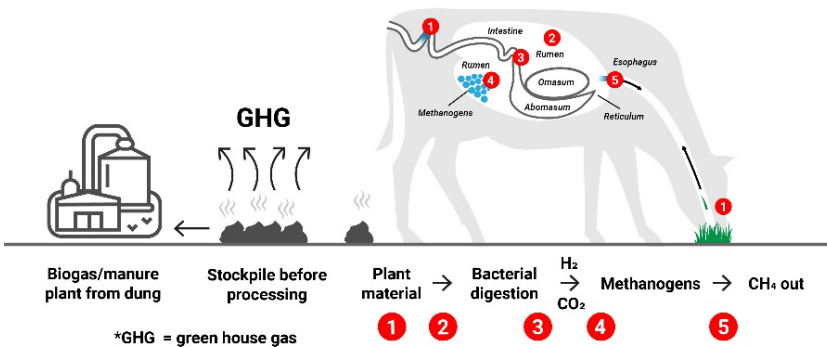
NANOTUBE TECHNOLOGIES

New uses including biomedical, waste-water treatment, dye removal & nanoelectronics

For personal use only

Proposed Discovery 1

- Addition of halloysite as a feed additive for cattle.
- Hypothesis is that the halloysite nanotubes will store greenhouse gases (including methane) during the digestion process.
- Potential for greenhouse gases to be collected (as dung) and processed into biogas.



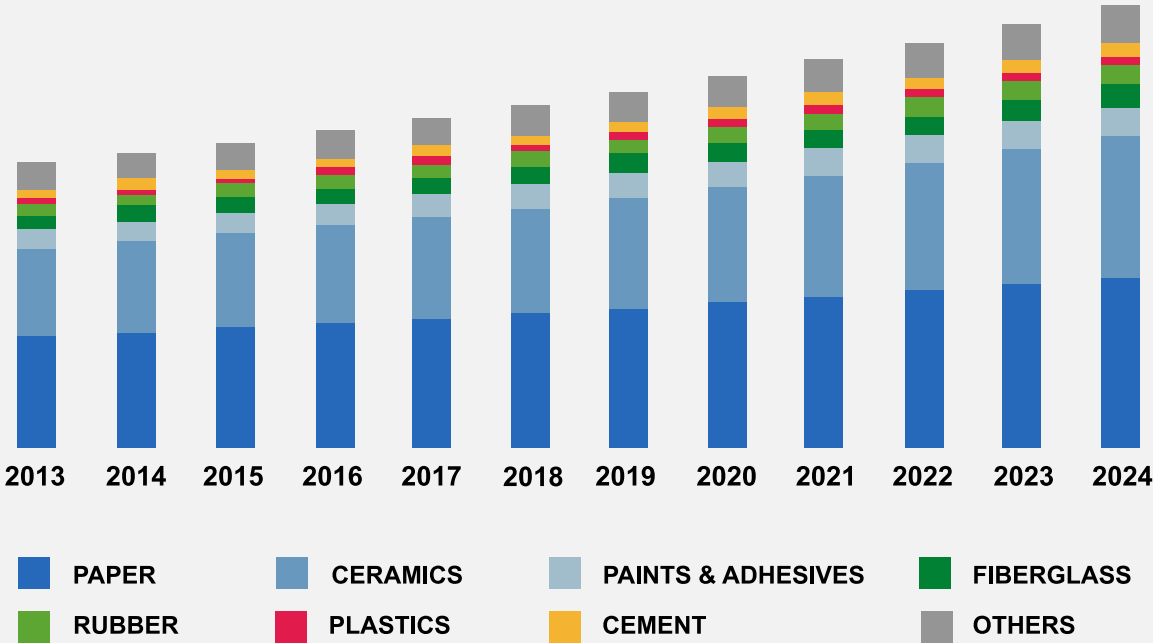
Traditional kaolin uses

- ▶ HPA
- ▶ Ceramics
- ▶ Paints, cement, plastics

Pre-Feasibility Study

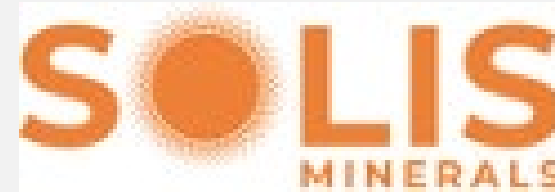
- ▶ Latin has commenced a Pre-Feasibility Study for a Direct Shipping Ore (DSO) operation for the bright white kaolin component of the Mineral Resource.
- ▶ Assessing the potential for a 10+ year DSO project, with railed ore to be shipped through Kwinana or Bunbury.
- ▶ PFS expected to be completed by mid-2022, with many components completed to DFS level.

The global kaolin market was valued US\$ 5.43Bn in 2013 and is expected to reach US\$ 8.23Bn by 2024, at a CAGR of 6.5%



Where appropriate, Latin has a policy to divest or spin out non-core assets into companies/vehicles **that can add further value and generate further value for Latin shareholders.**

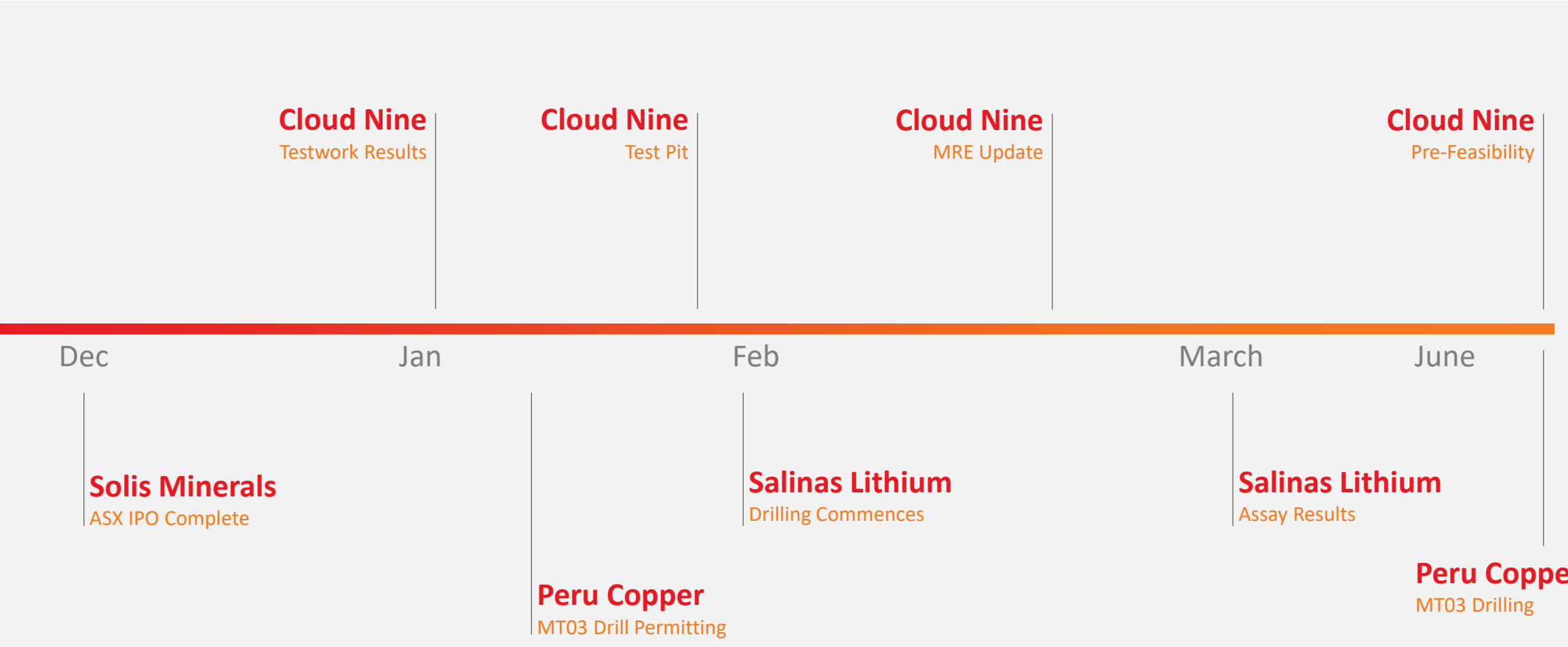
i.e Solis Minerals – LRS largest shareholder



- ▶ Copper explorer in Chile and Peru
- ▶ Dual listed on TSX and ASX
 - TSX-V : SLMN
 - ASX : SLM
- ▶ Latin holds a 13.14% interest



For personal use only



- ▶ Latin Resources has commenced disclosing its Environmental, Social, and Governance (ESG) metrics.
- ▶ Disclosures to be made using World Economic Forum ESG universal framework.
- ▶ Adoption of Socialsuite technology platform “ESG Go” for disclosing and monitoring progress.
- ▶ The Company is progressing a strategic review of its portfolio, with an increasing focus on exploring for, and developing those commodities that have a positive impact on our environment.

Latin's ESG purpose statement:

“*Developing minerals to provide the planet with environmentally sustainable product*”

Socialsuite



Contact Us

Chris Gale

Managing Director

+61 8 6117 4798

info@latinresources.com.au



Sigma Lithium - Minas Gerais' First Big Mover

- ▶ Sigma is developing a world class lithium hard rock deposit at its Grotado Cirilo property in Minas Gerais Brazil.
- ▶ Sigma has commenced construction of a commercial-scale lithium concentration plant.
- ▶ XUXA and BARREIRO Measured and Indicated 37Mt @ 1.48% Li₂O.
- ▶ Initial production of 220,000 tonnes of Spodumene production per annum (32,000 tonnes LCE) in a commercial plant with a capacity of 1.5Mt.
- ▶ Production of 6% lithium concentrate due by 2023.
- ▶ Sigma current Market Cap CAD \$800mm.

- ✓ Past-producing lithium mine – Supports fast-track to commercial production.
- ✓ Excellent infrastructure and project access – Expected to result in manageable capital costs to production.
- ✓ Potential low-cost high-margin producer.
- ✓ Significant additional potential +18,000 ha property & only 1 of 10 targeted lithium-bearing pegmatites drilled to measured resources.
- ✓ Strategically positioned in Brazil providing high-quality battery-grade spodumene concentrate.
- ✓ Seasoned Brazil-based management team & board with complementary skillsets to bring Sigma to production.



CBL – Early Domestic lithium Producers

- ▶ CBL producing lithium compounds of hydroxide and carbonate at its chemical plant Divisa Alegria.
- ▶ CBL produces 1,500 tpy of Lithium Carbonate Equivalent (LCE).
- ▶ Historically, the lithium compounds produced in Brazil do not meet the specifications for battery-grade products.
- ▶ Potential exists for LRS to feed Divisa Alegria with further high-grade lithium concentrate.
- ▶ Opportunity to upgrade Divisa Alegria to increase capacity and produce high quality battery grade products.
- ▶ LRS Salinas Spodumene Pegmatite – Divisa Alegria – 140km by Road.

Source: <https://cblitio.com.br/chemical-plant/?lang=en>



*Divisa Alegria Lithium Hydroxide Plant
Mina Gerais, Brazil
140km from LRS Pegmatites*