

An aerial photograph showing a wide river flowing through a landscape. In the lower-left, a town with a grid street pattern is visible. The river curves through the center and right side of the image. The surrounding terrain is a mix of brown, tan, and green, suggesting a semi-arid environment. A dark, semi-transparent rectangular box is overlaid in the upper-middle section, containing the title and date.

AEROMETREX INVESTOR PRESENTATION

May / June 2021

SEE YOUR WORLD CLEARLY.



COMPANY OVERVIEW

Our Purpose

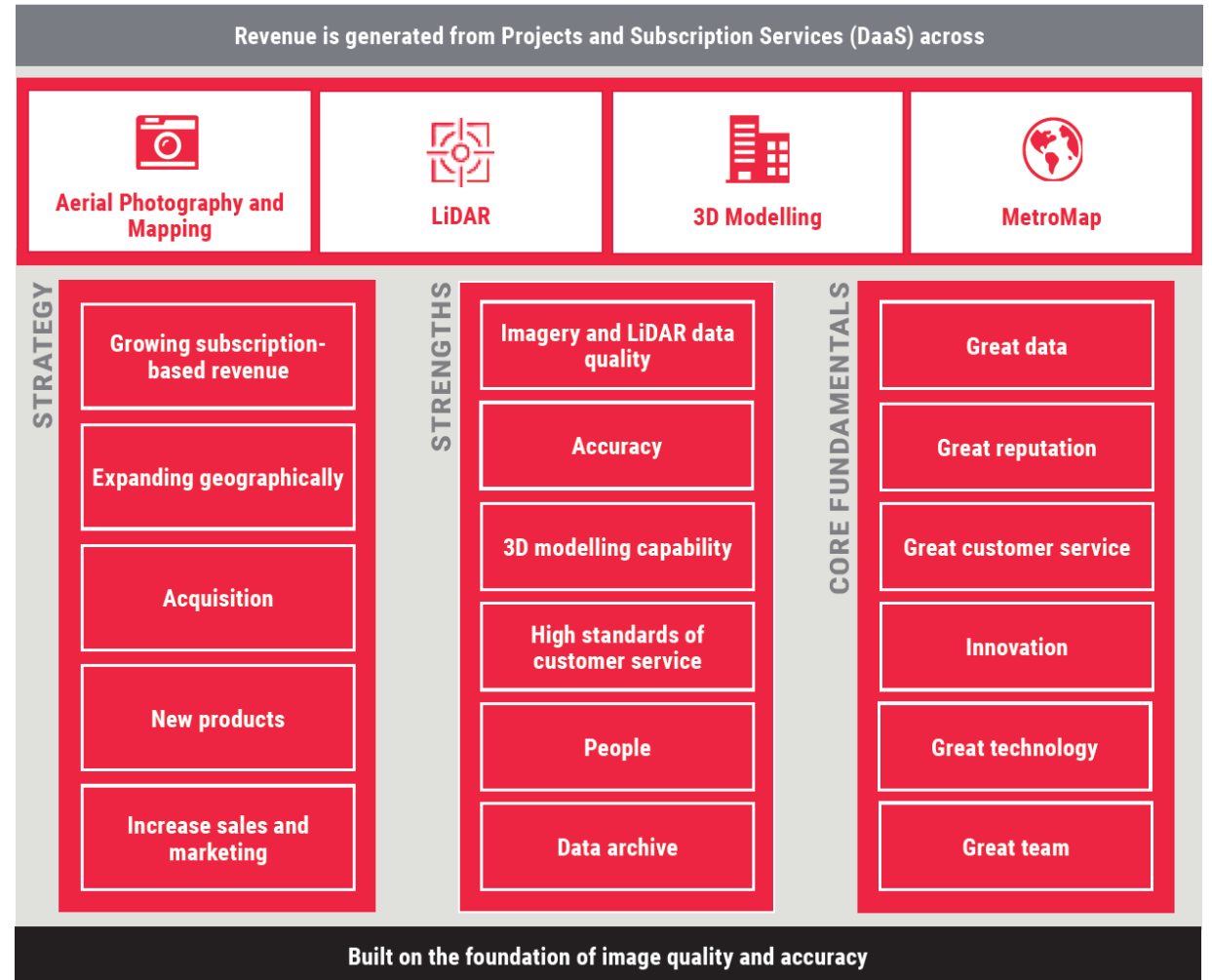
To provide our customers throughout Australia and overseas with accurate, high-quality, best-value data products that satisfy all their aerial imagery and spatial data requirements.

Our Vision

To become the market leading company in our service sector in terms of quality of products, value offered to our customers and market share. Be an internationally recognised geospatial company utilising the best available technology to deliver world class products.

Our Mission

To provide professional, accurate digital image mapping and geospatial engineering solutions to our clients by exploiting both existing and emerging air and ground imaging technologies.



Timeline

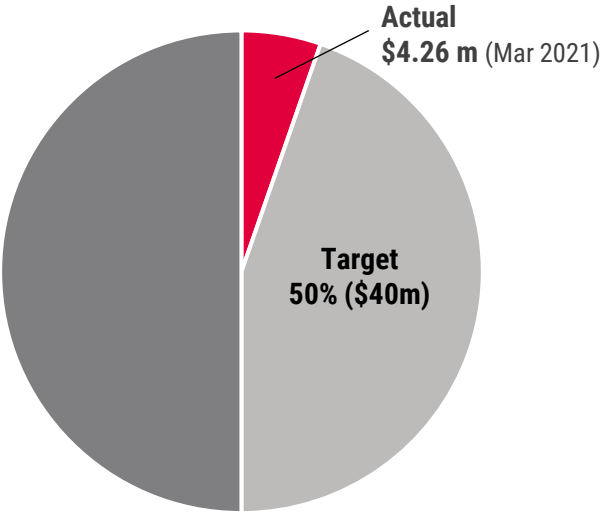


Subscription



Total Addressable Market (TAM) ~\$80 million + per annum

Market Australia

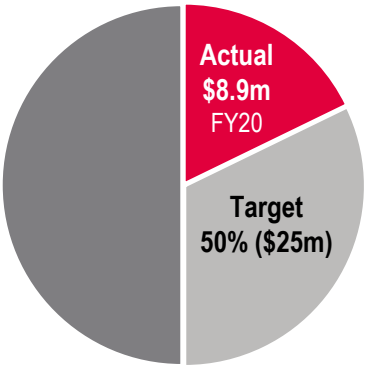


Project Work



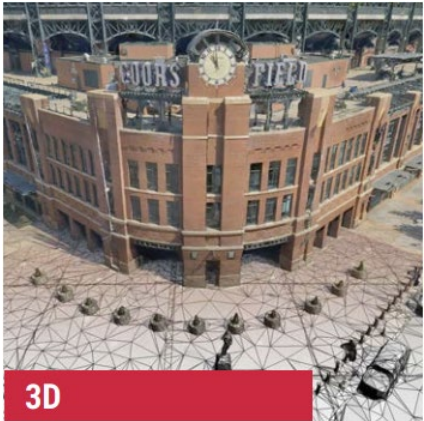
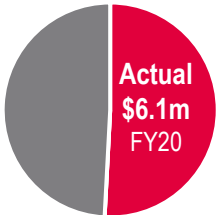
~\$50 million per annum

Australia



~\$12 million per annum

Australia



Open-ended, international scope
Growing awareness of value

Global



INDUSTRIES SERVICED & MAJOR USE CASES

Industries serviced (including but not limited to):

- Architecture, Engineering & Construction
- Energy & Utilities
- Environment & Disaster Management
- Events, Media & Entertainment
- Forestry & Agriculture
- Government
- Insurance & Financial Services
- Natural Resources, Mining & Exploration
- Property & Real Estate
- Telecommunications
- Transport, Logistics & Traffic Management

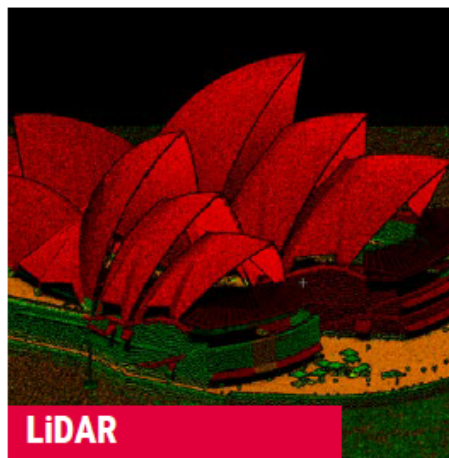
Subscription



MetroMap

Examples of Major Use Cases:

- Accurate and frequent spatial information to assist local councils in urban planning, asset management and community engagement
- 2D and 3D spatial mapping to plan, build and maintain smarter infrastructure
- Integrate accurate base map imagery with other utility databases to aid operations, engineering design, planning and decision support
- Ensure faster, more accurate valuations based on detailed risk assessment of assets
- Showcase property developments by combining the power of visual imagery and data attributes
- Visualise, plan and optimise telecommunication networks using updated 2D & 3D datasets
- Monitor environmental change and disaster management right from planning through to response & recovery

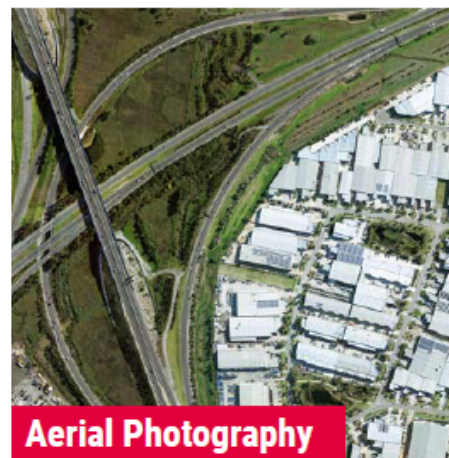


LiDAR

Examples of Major Use Cases:

- Agricultural irrigation analysis
- Engineering design across projects spanning road, rail, oil & gas pipelines, renewable energy (wind & solar)
- Environmental mapping including flood modelling, catchment analysis, bushfire fuel load mapping
- Canopy growth and volume analysis across forestry and urban vegetation
- Stockpile analysis, windrow analysis across mining and exploration sites
- Vegetation encroachment mapping along powerlines
- Derived products to be transitioned to MetroMap platform

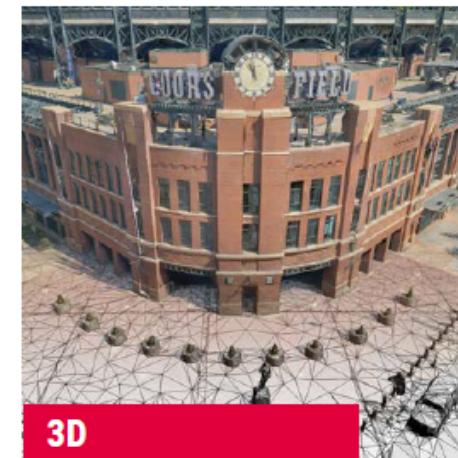
Project Work



Aerial Photography

Examples of Major Use Cases:

- Large infrastructure projects where engineers and project managers require high accuracy and specific capture dates
- Monitoring progress of widespread events, or documenting damage; ideal for insurance sector, government emergency departments, coroners
- Asset management of critical development areas for use by councils, urban planners
- Dynamic change assessment along coastlines for factors such as erosion, monitoring seagrass
- Volumetric calculations and site management for mining and exploration firms
- Individual use cases such as mining for planning, infrastructure and asset management



3D

Examples of Major Use Cases:

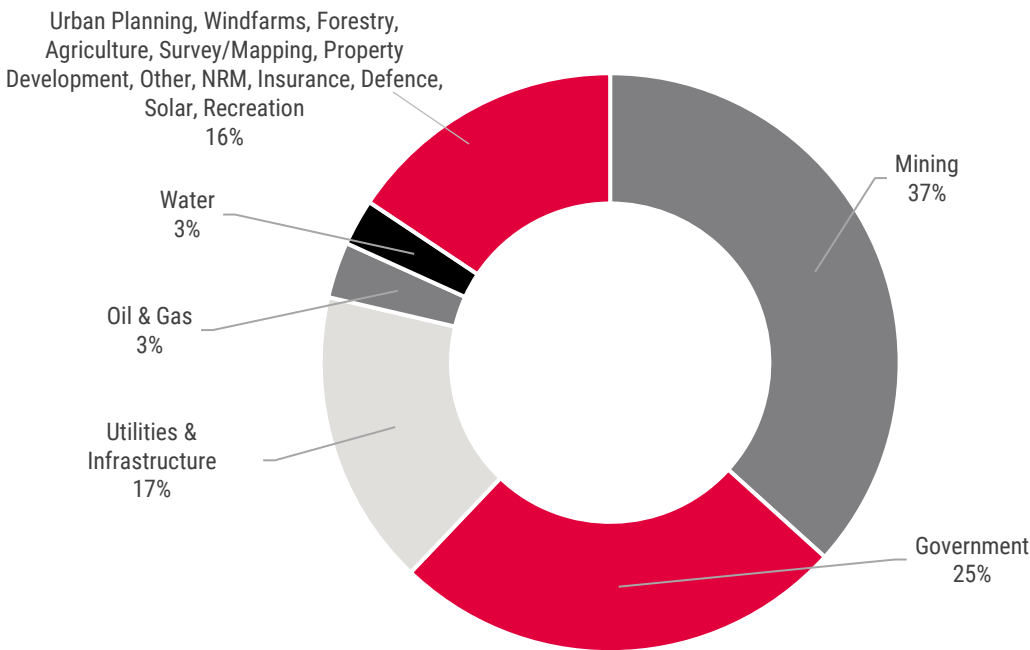
- Provide base 3D models for planning of digital twins and smart city projects
- Improve planning and monitoring of major transport & infrastructure projects from concept to final design using 3D data
- Provide three-dimensional context to critical engineering & construction projects
- Support urban designers, architects, real estate specialists by allowing three-dimensional assessment of new developments
- 3D digitisation to support heritage building conservation as well as larger tourism initiatives
- Virtual films and futuristic gaming with real-world environments using 3D
- Simulation of events e.g. flood in digital twin
- Security management

CUSTOMER PROFILE

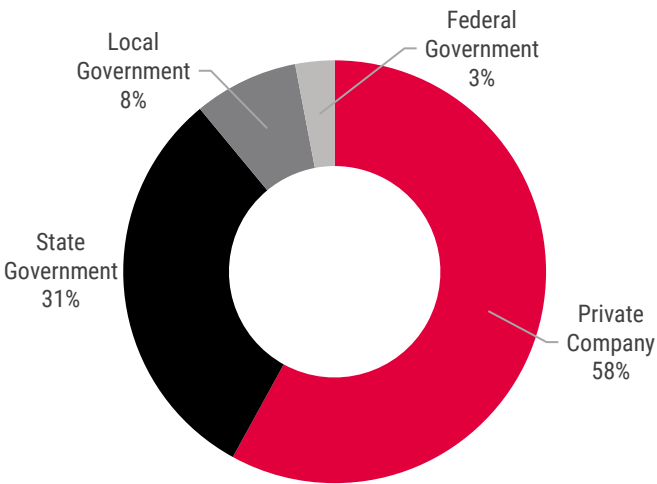
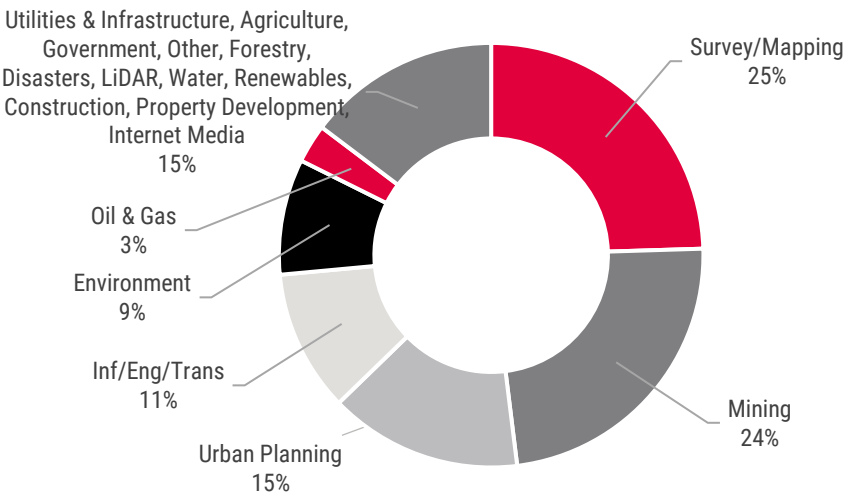
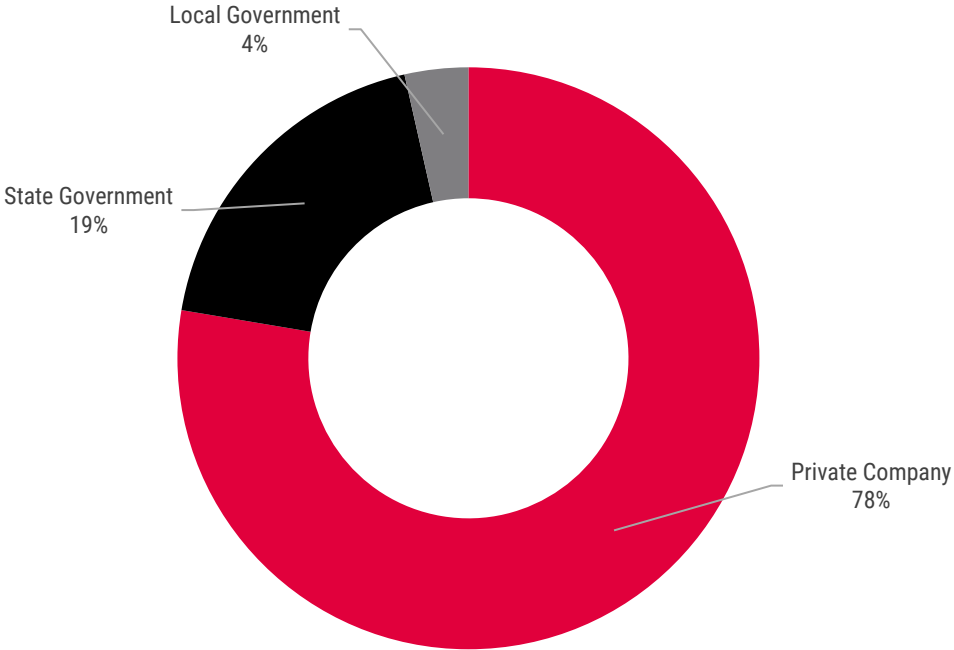
Project based

Prior Year
Current Year

Industry



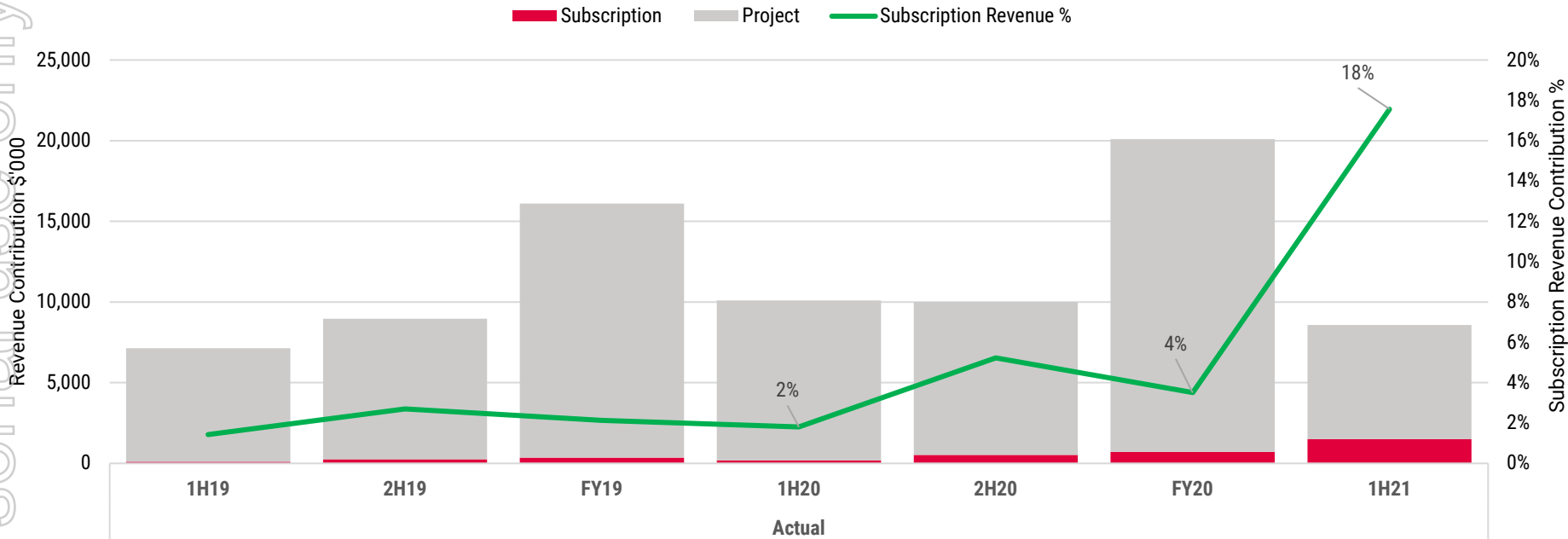
Client Type



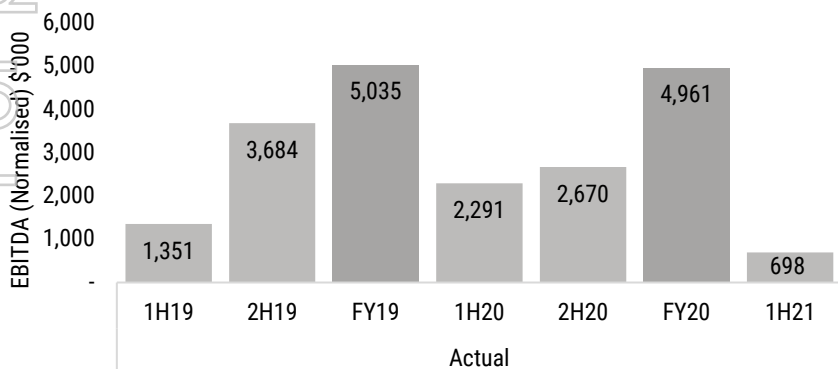
FY21 KEY FINANCIALS

Subscription revenue continues to grow

Group Revenue



EBITDA (Normalised)



	1H19	2H19	FY19	1H20	2H20	FY20	1H21
EBITDA	1,351	3,684	5,035	1,481	2,420	3,901	(142)
IPO & Capital Raising Costs	-	-	-	543	(44)	499	-
Refinance Costs	-	-	-	198	-	198	-
Share Based Payments	-	-	-	69	294	363	840
EBITDA (Normalised)	1,351	3,684	5,035	2,291	2,670	4,961	698

Cash at bank
\$16.3m
Dec 2020

Geographical
segments

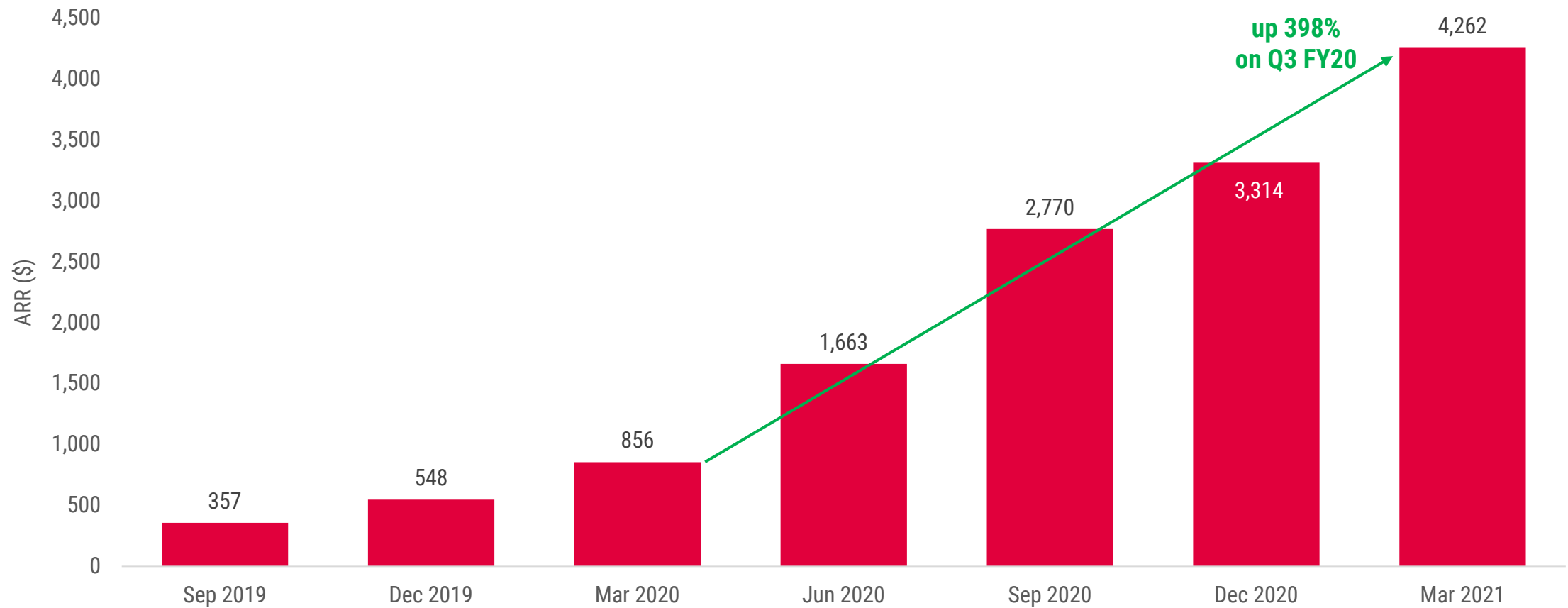
Australia

US

For personal use only

Annual Recurring Revenue (ARR)
Calculation: Monthly Revenue x12

■ Actual ARR (\$'000)



MetroMap is Aerometrex's subscription-based product offering that supplies Data as a Service (DaaS). Ranging from 2D imagery to 3D off-the-shelf city models and a range of LiDAR and imagery-derived datasets, MetroMap is the future of accurate geospatial data, accessible by everyone from large corporates, government departments, SMEs and individuals.

Key Products:

- 2D aerial imagery subscription plans
- 3D off-the-shelf city models and subscriptions
- Near-infrared imagery (NiR)
- Classified LiDAR point cloud datasets
- AI-derived value-added datasets

Industries Serviced (including but not limited to):

- Architecture, Engineering & Construction
- Energy & Utilities
- Environment & Disaster Management
- Events, Media & Entertainment
- Forestry & Agriculture
- Government
- Insurance & Financial Services
- Natural Resources, Mining & Exploration
- Property & Real Estate
- Telecommunications
- Transport, Logistics & Traffic Management

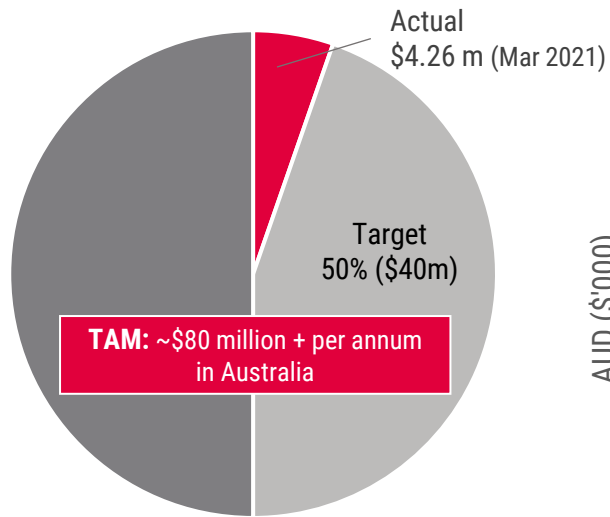
Examples of Major Use Cases:

- Accurate and frequent spatial information to assist local councils in urban planning, asset management and community engagement
- 2D and 3D spatial mapping to plan, build and maintain smarter infrastructure
- Integrate accurate base map imagery with other utility databases to aid operations, engineering design, planning and decision support
- Ensure faster, more accurate valuations based on detailed risk assessment of assets
- Showcase property developments by combining the power of visual imagery and data attributes
- Visualise, plan and optimise telecommunication networks using updated 2D & 3D datasets
- Monitor environmental change and disaster management right from planning through to response & recovery

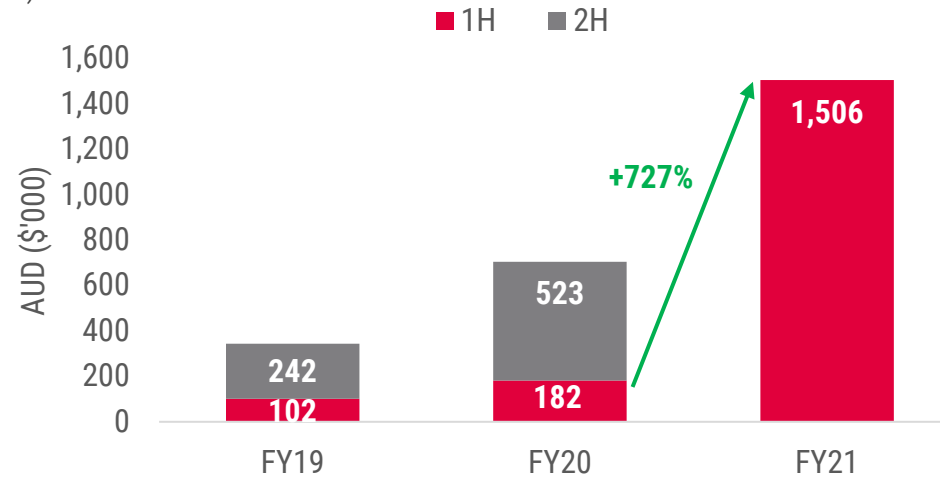
Addressable Market Size

~\$80 million + per annum
in Australia

Addressable Market (Subscriptions) - ARR



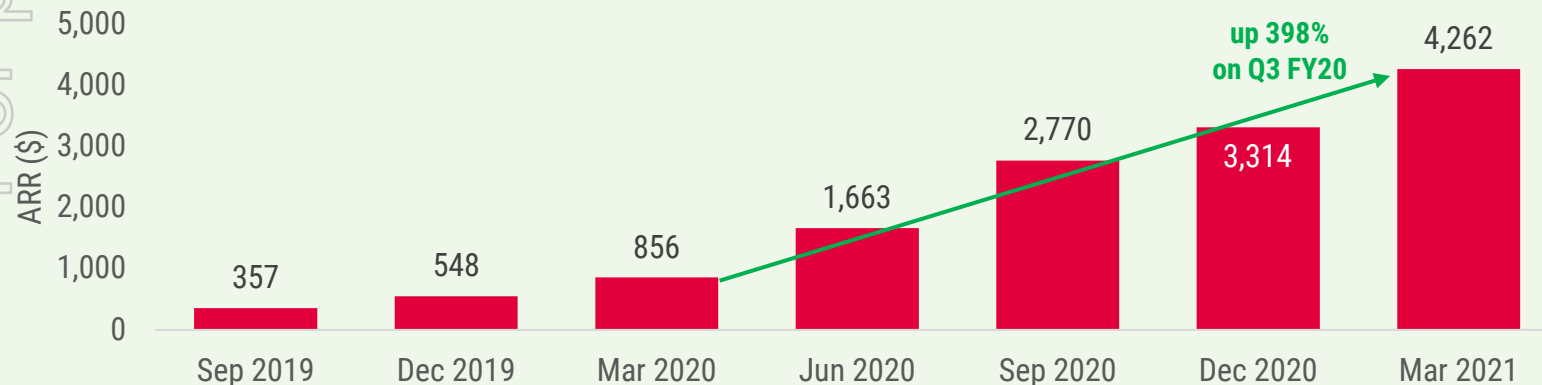
Subscription Revenue



Annual Recurring Revenue (ARR)

Calculation: Monthly Revenue x12

■ Actual ARR (\$'000)



1H21 Highlights

Revenue up \$1.3m
(+727%)

Growth in ARR to \$3.3m
(+504%)

Spookfish integration

Expanded high resolution
capture program

Increased investment into
marketing to drive
brand recognition

Spookfish contribution to ARR
\$835k
(March 2021)

FY21+ Priorities

Continued growth in ARR

Continued investment into
systems and process to
support scalable growth

- capture program
- production systems
- sales and admin systems

Increased brand awareness

Deployment of MetroCam #2

Continued development of
MetroMap platform offering

Analytics & machine learning

Continued development of
partner relationships

Continued development of
tools and features within the
platform

SIMPLIFYING SPATIAL INSIGHTS FOR BUSINESS USERS

- Agile, innovative and agnostic development
- From complex to simple
- Timely and direct support
- Enabling workflows and business reporting from spatial imagery and derived data

SIMPLIFYING TOOLS & WORKFLOWS

MetroMap simplifies measurement, comparative analysis through seamless web services

- Up-to-date imagery with frequent captures
- Compare with “Swipe”
- Integrated 3D data and tools

MOVING FROM DATA TO INSIGHTS

- Insights, solutions and answers
- Investment into machine learning capabilities through R&D initiatives
- End-to-end easy to use
- Meaningful visualisation and tools
- AI-derived data and other analytic data adding more value to maps

DIVERSIFIED DATA SOURCES

One-stop shop and single site access to

- LiDAR-derived data such as coastal erosion mapping and bushfire fuel load mapping
- Multiple formats and easy accessibility via online store
- Ability to purchase via the MetroMap store as well as channel partners



Our world-leading 3D modelling service offers multiscale models captured via a combination of platforms - aircraft, helicopter and ground level. These offer extremely high resolutions ranging from 7.5cm to under 1cm. With the additional dimension, our 3D models promise greater context and the ability to derive more features & insights via classification.

Key Products:

- 3D Mesh Models of built up and natural environment
- 3D Semantic Level of Detail (LOD) Models
- Artificial intelligence and machine learning enabled value-added products such as Classified 3D mesh and feature capture
- 3D visualisation products for audio-visual, gaming, and virtual or augmented reality

Industries Serviced (including but not limited to):

- Architecture, Engineering & Construction
- Energy & Utilities
- Environment & Disaster Management
- Events, Media & Entertainment
- Government
- Insurance & Financial Services
- Natural Resources, Mining & Exploration
- Property & Real Estate
- Telecommunications
- Transport, Logistics & Traffic Management

Examples of Major Use Cases:

- Provide base 3D models for planning of digital twins and smart city projects
- Improve planning and monitoring of major transport & infrastructure projects from concept to final design using 3D data
- Provide three-dimensional context to critical engineering & construction projects
- Support urban designers, architects, real estate specialists by allowing three-dimensional assessment of new developments
- 3D digitisation to support heritage building conservation as well as larger tourism initiatives
- Virtual films and futuristic gaming with real-world environments using 3D
- Simulation of events e.g., flood in digital twin
- Security management

Addressable Market Size

Open-ended, international scope
Growing awareness of value

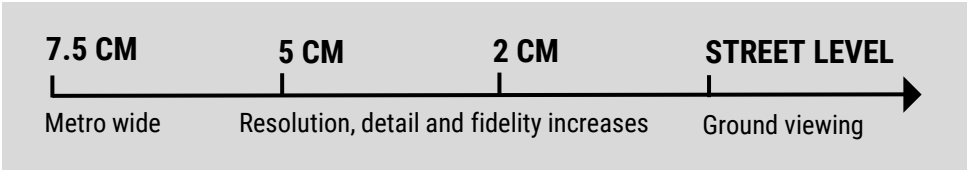


For personal use only



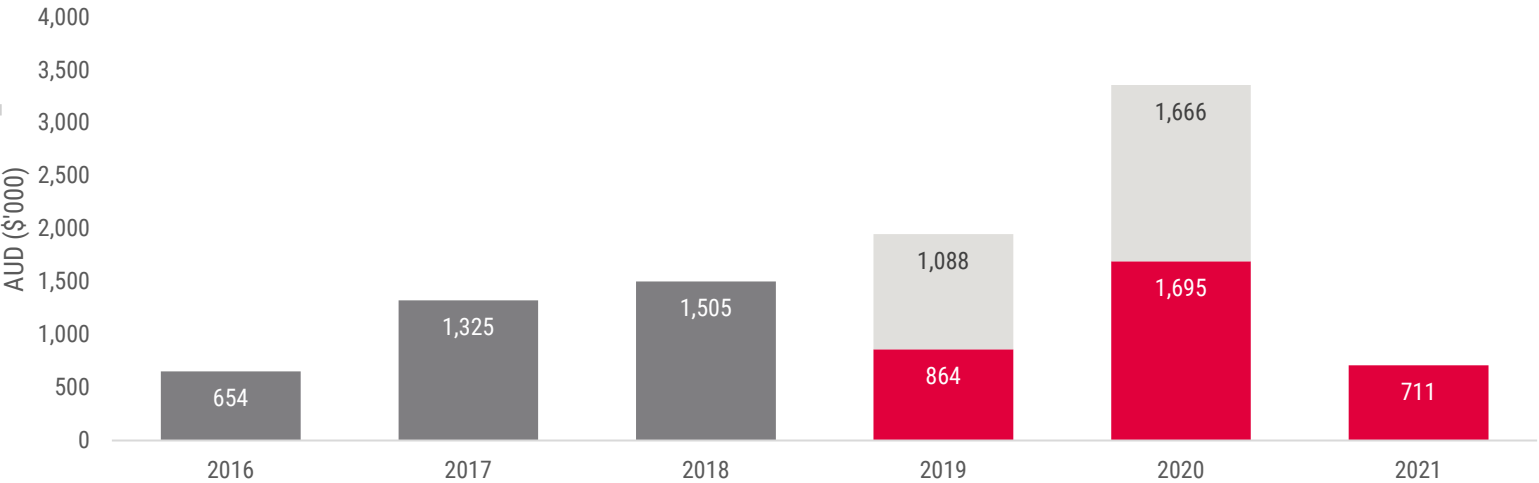
OUR RANGE OF 3D SOLUTIONS

With a range of 3D resolutions available we offer a broad variety of 3D data to meet our customers needs.



3D Revenue

FY 1H 2H



1H21 Highlights

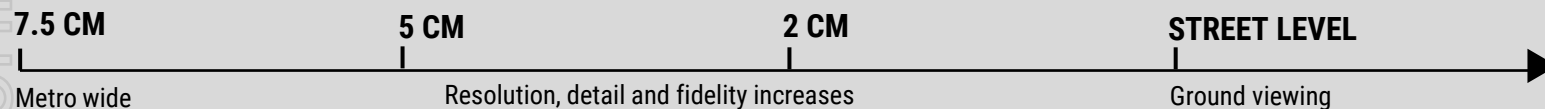
- Capture of datasets in US
- US staff training completed remotely

FY21+ Priorities

- US 3D revenue
- International projects
- Realising growth opportunities in the US
- Launch of MetroMap 3D store for US models
- Growth markets in areas such as virtual engagement, property and real estate, digital twins, tourism
- Augmented and virtual reality opportunities

OUR RANGE OF 3D SOLUTIONS

With a range of 3D resolutions available we offer a broad variety of 3D data to meet our customers needs.



OUR 7.5 CM RESOLUTION DATA

- Offers **incredible coverage** over major Australian cities
- Perfect for **high level flythroughs**, strategic **planning** and contextual **background** for higher resolution datasets
- Available now via MetroMap
 - on-demand for your specific area of interest (MetroMap 3D store)
 - as a one-off city dataset (MetroMap 3D store)
 - With access to all available cities by signing up to MetroMap 3D Enterprise

OUR 5 CM RESOLUTION DATA

- **Higher resolution and higher fidelity** than the standard 7.5cm
- Benefits from **economy of scale** compared to 2cm
- When combined with 2cm priority areas the 5cm resolution datasets offer **exceptional value for detailed context**
- A number of **off the shelf datasets available now** or can be delivered on a project basis

OUR 2 CM RESOLUTION DATA

- Contains **14x more texture data** than standard 7.5cm resolution 3D datasets
- Used across **State Governments, Local Governments, Planning, Infrastructure, Construction, Design, Mining and Property Industries** because of its **exceptional detail and accuracy**
- Growing list of 2cm resolution CBD datasets becoming **available on our MetroMap 3D Store** (including Melbourne and Sydney)

OUR STREET LEVEL DATA

- Our **multi level acquisition** and processing pipeline allows for the merging of **Street Level and Aerial Photogrammetry**
- This **unprecedented 3D product** giving the most rich and detailed view available in the market
- Suitable for viewing and experiences at a ground level
- **16x more texture data** than 2cm models
- Seamless integration to 2cm models

3D MODELS AND GAME ENGINES

We continue to innovate with workflows to put our 3D data into the latest game engines

- Allows innovative use cases
- Diversifies customer base
- Opens our data for use to new industries
- Lowers barrier to entry by enabling in-house use
- Fills a range of needs that don't exist in current 3D software packages

EXCITING GROWTH MARKETS

We are supporting the next wave of industries embracing 3D data, pioneering the way for broader use in new and developing markets, such as

- Virtual engagement
- Prop Tech, Real Estate
- Event pitching and planning
- Engineering and Design
- City planning, Digital Twins
- Tourism



For personal use only

Light Detection and Ranging (LiDAR) is an advanced aerial surveying technique which utilizes active laser pulses (up to 2 million laser pulses per second) generated by the sensor to measure the distance of the aircraft to the ground. As the position of the aircraft is determined by GPS, the shape of the terrain including above ground features can be modelled. This survey technology and the information derived from it has become a critical asset for numerous planning & monitoring purposes, even more so when combined with imagery.

Key Products:

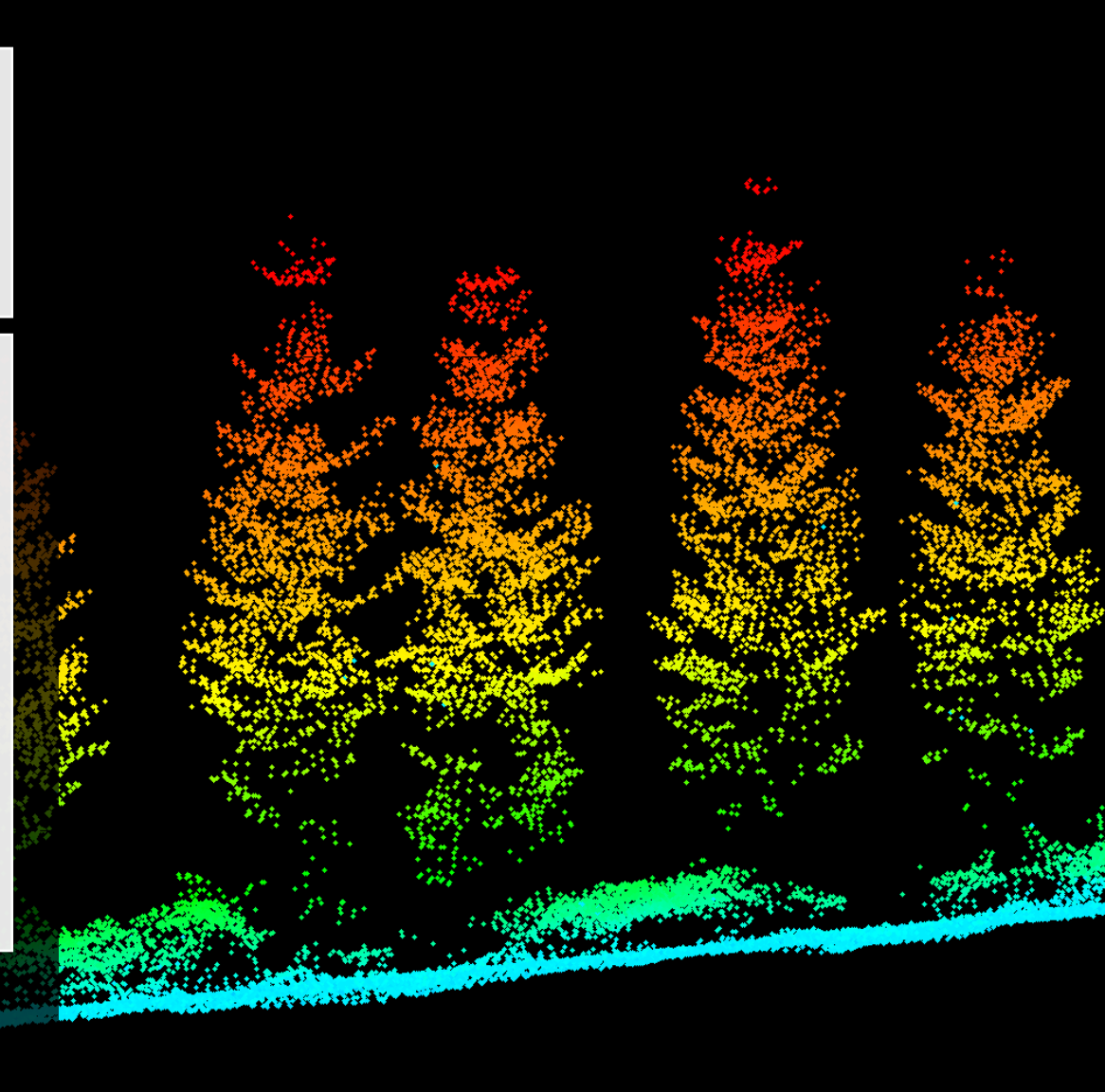
- LiDAR 3D Point Clouds
- Ground Surface Products
- Vegetation Surface Products
- Vector Line Products
- LiDAR-derived 2D datasets

Industries Serviced (including but not limited to):

- Architecture, Engineering & Construction
- Energy & Utilities
- Environment & Disaster Management
- Forestry & Agriculture
- Government
- Insurance & Financial Services
- Natural Resources, Mining & Exploration
- Property & Real Estate
- Telecommunications
- Transport, Logistics & Traffic Management

Examples of Major Use Cases:

- Agricultural irrigation analysis
- Engineering design across projects spanning road, rail, oil & gas pipelines, renewable energy (wind & solar)
- Environmental mapping including flood modelling, catchment analysis, bushfire fuel load mapping
- Canopy growth and volume analysis across forestry and urban vegetation
- Stockpile analysis, windrow analysis across mining and exploration sites
- Vegetation encroachment mapping along powerlines

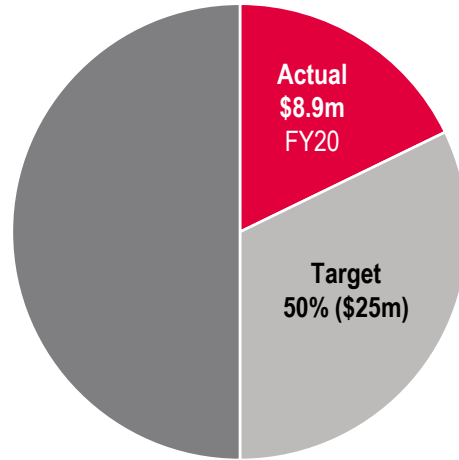


Addressable Market Size
~\$50 million per annum
in Australia

For personal use only

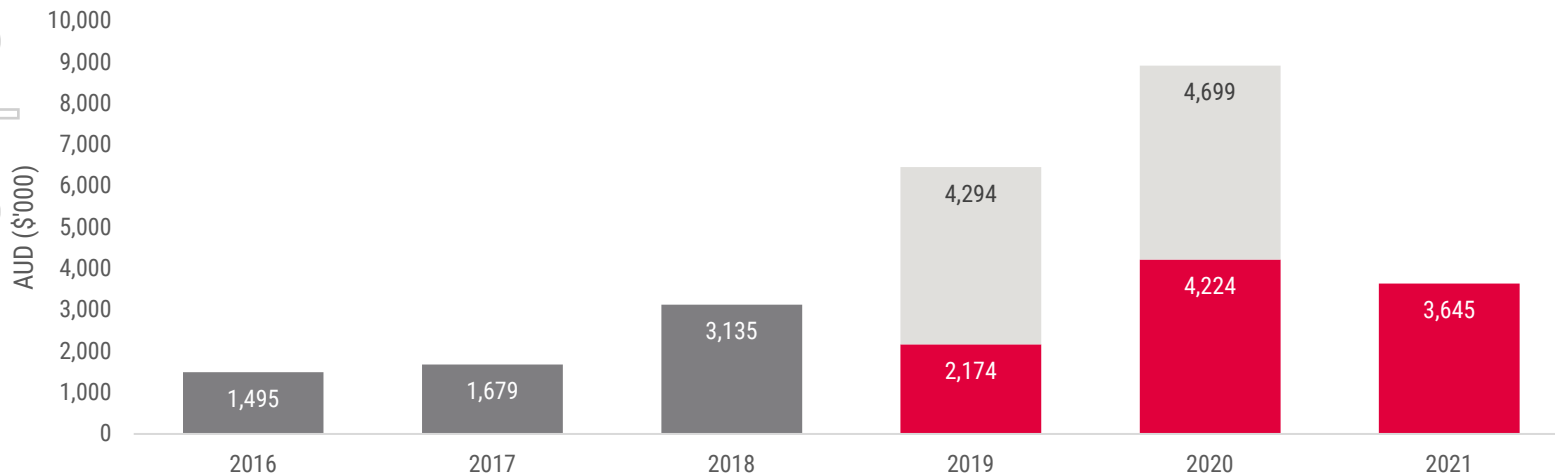
Addressable Market Size
~\$50 million per annum
in Australia

Addressable Market



LiDAR Revenue

■ FY ■ 1H ■ 2H



1H21 Highlights

Investment in upgrading sensors to latest technology

Bushfire fuel load Modelling developed through the R&D team

FY21+ Priorities

Potential opportunity to convert to subscription model (MetroMap)

AI and R&D opportunities

Expanding use cases and market awareness around LiDAR applications

- Environmental
- safety

Increasing opportunities to use LiDAR derived products and information in environmental applications

AERIAL PHOTOGRAPHY AND MAPPING

The foundation of Aerometrex has been in project based aerial photography, photogrammetry and mapping services since its establishment in 1980. Driven by exacting standards of project delivery and the need for geospatially accurate data, this discipline underpins the Aerometrex commitment to quality.

Predominantly project based with the focus on shifting clients to the MetroMap subscription platform (DaaS) wherever possible.

Key Products:

- 2D ortho-imagery with the ability to customize resolution and accuracy
- Digital elevation data such as digital terrain models (DTM) and digital surface models (DSM)
- Stereo-derived datasets

Industries Served (including but not limited to):

- Architecture, Engineering & Construction
- Energy & Utilities
- Environment & Disaster Management
- Events, Media & Entertainment
- Forestry & Agriculture
- Government
- Insurance & Financial Services
- Natural Resources, Mining & Exploration
- Property & Real Estate
- Telecommunications
- Transport, Logistics & Traffic Management

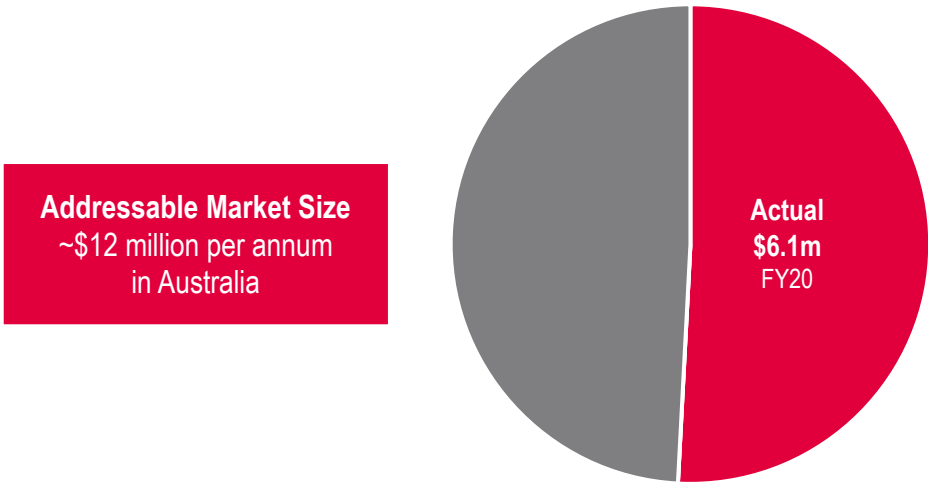
Examples of Major Use Cases:

- Large infrastructure projects where engineers and project managers require high accuracy and specific capture dates
- Monitoring progress of widespread events, or documenting damage; ideal for insurance sector, government emergency departments, coroners
- Asset management of critical development areas for use by councils, urban planners
- Dynamic change assessment along coastlines for factors such as erosion, monitoring seagrass
- Volumetric calculations and site management for mining and exploration firms
- Individual use cases such as mining for planning, infrastructure and asset management

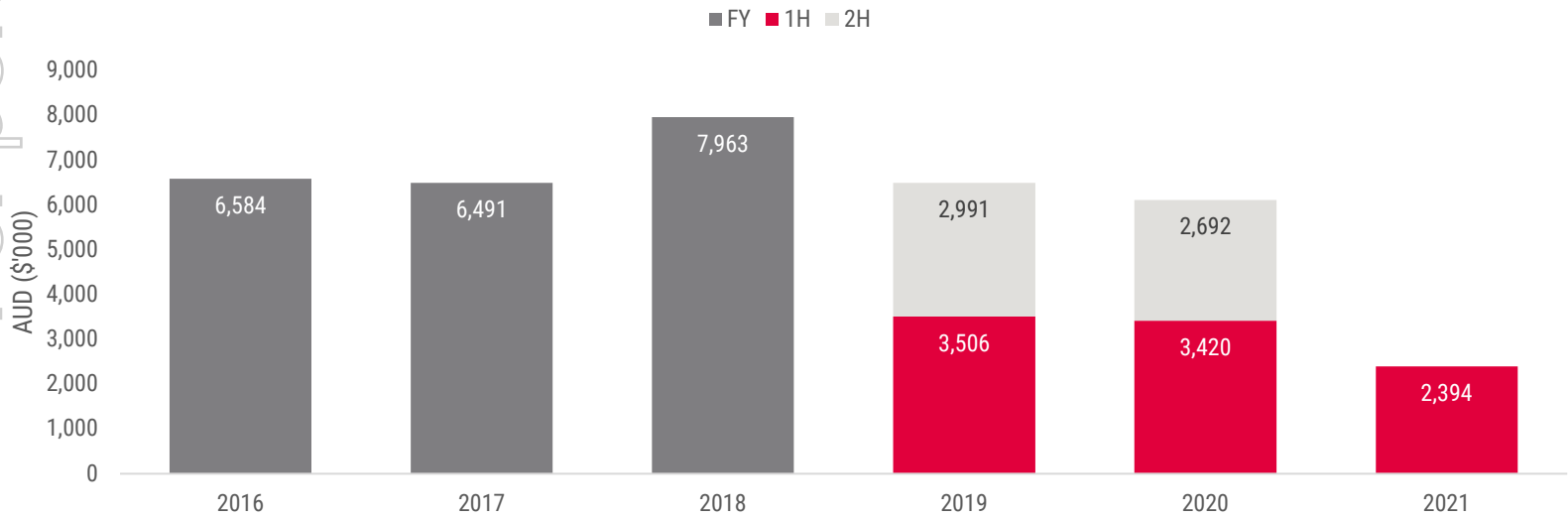
Addressable Market Size
~\$12 million per annum
in Australia

For personal use only

Addressable Market



Aerial Photography & Mapping Revenue



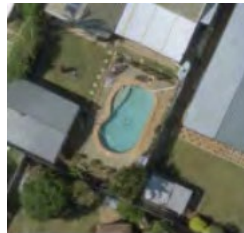
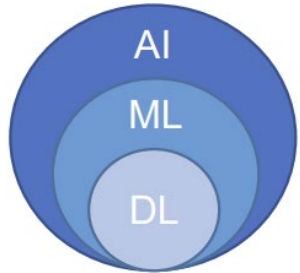
1H21 Highlights

- Completion of QLD Government \$1m program of works
- Completion of WA Landgate program of works
- 3cm GSD QLD hail damage survey

FY21+ Priorities

- Focus towards MetroMap DaaS model (where appropriate)

Translating geospatial data into knowledge using machine learning



picture



label

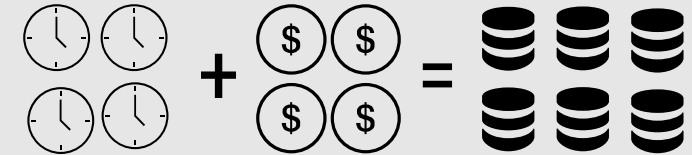
Machine Learning:

ML techniques enable machines to improve at recognising objects with experience.

Training:

learning to recognise an object by labelling examples in many images.

Manual data labelling to produce training dataset



AMX automatic optimised data labelling to product training dataset





MetroMap

- Continuing to build momentum in subscription revenue
- Creation of 3D store
- Enhance customer offering through LiDAR derived products hosted via the MetroMap platform



3D Modelling

- Continue discussions with a number of large global companies in the US in respect of their 3D opportunities
- Opportunities in growth markets of gaming, virtual worlds in VR and AR, property development



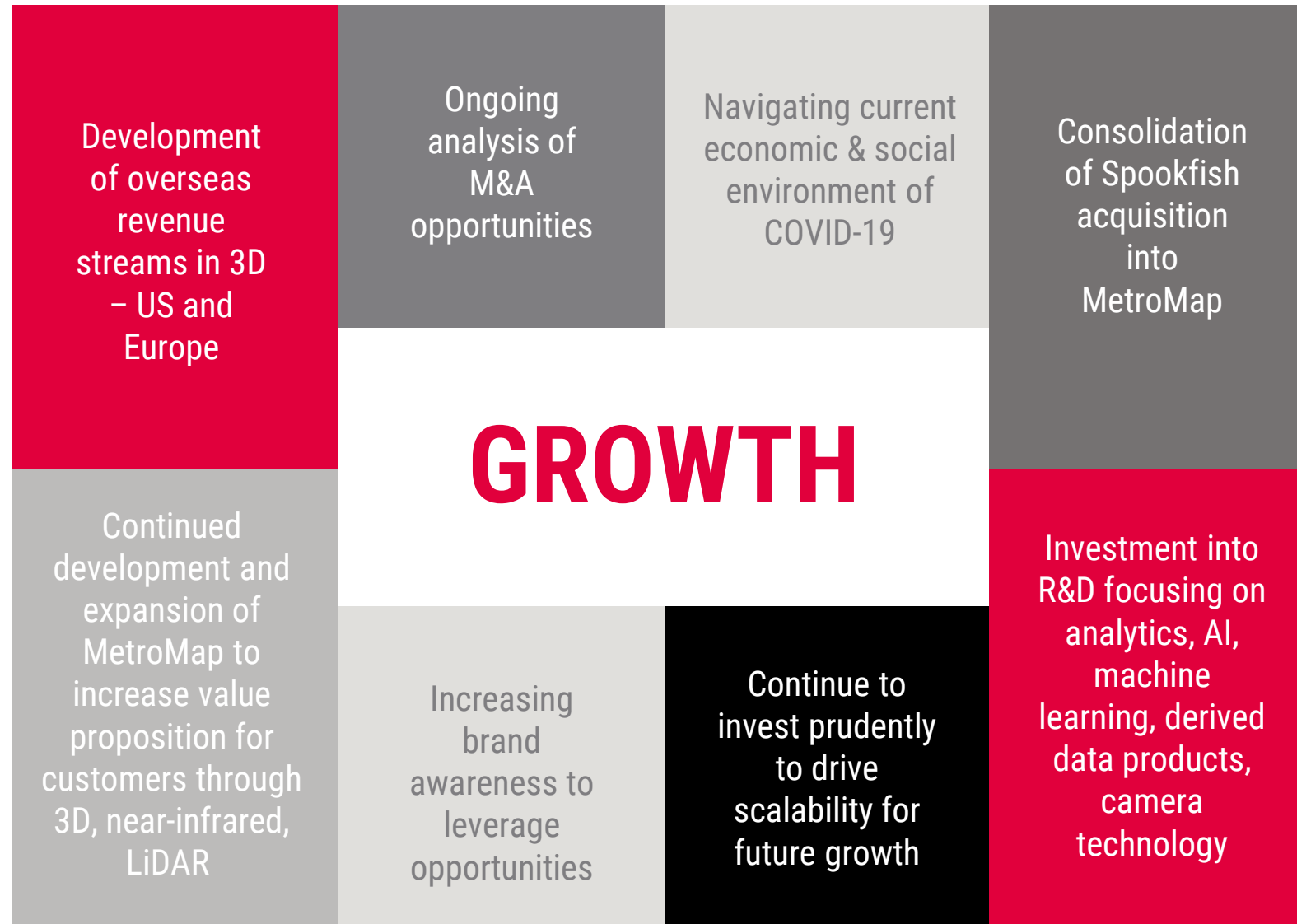
Research & Development

- Leverage opportunities in AI and machine learning
- Converting R&D initiatives into commercial opportunities such as bushfire fuel load modelling, feature extraction, automation of production processes

STRATEGIC PRIORITIES

Priorities to drive growth in FY21

For personal use only



DaaS subscription model

focus on development and growth of MetroMap



World leaders in 3D modelling

using massive multi-ray photogrammetry technology



Market opportunities

Total Addressable Market (TAM)



Progressive, innovative, experienced

management and staff



Gilt-edged reputation

for data quality, accuracy and reliability

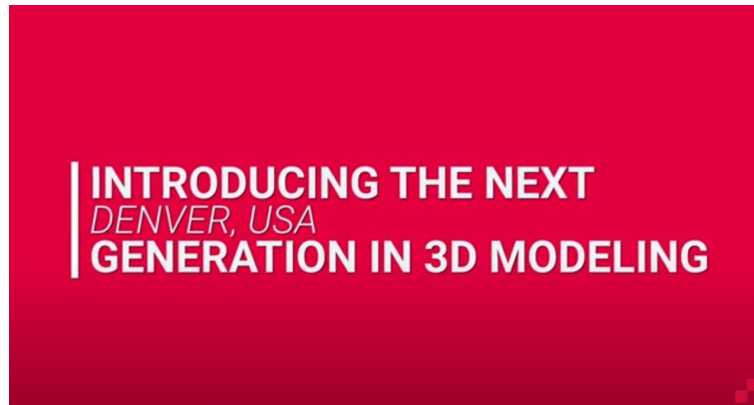




See your world clearly with Aerometrex!
<https://youtu.be/g-0tFQJhHh4>



SEE THE UNSEEN – Drive FORESIGHT
before it comes HINDSIGHT
<https://youtu.be/bKGwr34J6ck>



Denver 3D: Introducing the next
generation in 3D Modeling in USA
<https://youtu.be/6NYmNWgUAe0>



Do More with MetroMap
<https://youtu.be/zvkujjofGOg>

This presentation is provided for information purposes only and is not a disclosure document as defined under the Corporations Act 2001 (Cth) This presentation does not constitute an offer, invitation, solicitation or recommendation with respect to the purchase, sale or issue of any securities or any financial product nor does it constitute financial product or investment advice. The presentation does not contain all the information that may be required for evaluating the Company's assets, prospects or potential opportunities and is not intended to be used as the basis for making an investment decision. The presentation has been prepared without taking into account the investment objectives, financial situation or particular needs of any particular person.

No representation or warranty, express or implied, is made as to the accuracy, reliability, completeness or fairness of the information, opinions and conclusions contained in this presentation. Neither the Company, its related bodies corporate, shareholders or affiliates, nor any of their respective officers, directors, employees, related bodies corporate, affiliates, agents or advisers makes any representations or warranties that this presentation is complete or that it contains all material information about the Company or which a prospective investor may require in evaluating a possible investment in the Company or acquisition of securities. To the maximum extent permitted by law, none of those persons accept any liability, including, without limitation, any liability arising out of fault or negligence for any loss arising from the use of information contained in this presentation or in relation to the accuracy or completeness of the information, statements, opinions or matters, express or implied, contained in, arising out of or derived from, or for omissions from, this presentation. In particular, no representation or warranty, express or implied is given as to the accuracy, completeness or correctness, likelihood of achievement or reasonableness of any forecasts, prospects or returns (if any) contained in this presentation nor is any obligation assumed to update such information. Such forecasts, prospects or returns are by their nature subject to significant uncertainties and contingencies. Neither the Company nor its related bodies corporate, shareholders or affiliates, nor any of their respective officers, directors, employees, related bodies corporate, affiliates, agents or advisers guarantees any return or generally the performance of the Company or the price at which its securities may trade. Any investment in the Company is subject to investment risks including the possibility of loss of capital invested and no return of income or payment of dividends.

Before making an investment decision, you should assess whether an investment is appropriate in light of your particular investment needs, objectives and financial circumstances and consider seeking your own independent legal, financial and commercial advice. Past performance is no guarantee of future performance.

The distribution of this document in jurisdictions outside Australia may be restricted by law. Any recipient of this document outside Australia must seek advice on and observe any such restrictions.

This presentation may contain certain "forward-looking statements" with respect to the financial condition, results of operations and business of the Company and certain plans and objectives of the management of the Company. Forward looking statements can generally be identified by words such as 'may', 'could', 'believes', 'plan', 'will', 'likely', 'estimates', 'targets', 'expects', or 'intends' and other similar words that involve risks and uncertainties, which may include, but are not limited to, the outcome and effects of the subject matter of this presentation. Indications of, and guidance on, future exchange rates, capital expenditure, earnings and financial position and performance are also forward-looking statements.

You are cautioned not to place undue reliance on forward looking statements as actual outcomes may differ materially from forward looking statements. Any forward-looking statements, opinions and estimates provided in this presentation necessarily involve uncertainties, assumptions, contingencies and other factors, and unknown risks may arise, many of which are outside the control of the Company. Such statements may cause the actual results or performance of the Company to be materially different from any future results or performance expressed or implied by such forward looking statements. Forward-looking statements including, without limitation, guidance on future plans, are provided as a general guide only and should not be relied upon as an indication or guarantee of future performance. Such forward looking statements speak only as of the date of this presentation.

The information in this presentation is current as at the date on the cover of the presentation and remains subject to change without notice, in particular the Company disclaims any intent or obligation to update publicly any forward-looking statements, whether as a result of new information, future events or results or otherwise.

CONTACT INFORMATION

Aerometrex Ltd

51-53 Glynburn Road
Glynde SA 5070

Mark Deuter

Managing Director
+61 8 8362 9911
investorrelations@aerometrex.com.au

Justin Foord

Investor Relations, Market Eye
+61 402 600 691
justin.foord@marketeye.com.au

www.aerometrex.com.au

www.metromap.com.au

This presentation has been approved by the Board of Aerometrex.