

11<sup>th</sup> March 2021

*This announcement contains inside information*

## **88 Energy Limited**

### **Operations Update**

88 Energy Limited ("**88 Energy**" or the "**Company**", ASX:88E, AIM 88E) provides the following update related to its operations in the NPR-A region of the North Slope of Alaska.

#### **Highlights**

- Merlin-1 drilling commenced

#### **Details**

88 Energy is pleased to report that Rig 111 commenced drilling the Merlin-1 well at 0338 on 10<sup>th</sup> March 2021 (AK time).

The Merlin-1 well will initially be drilled to 1,500', then surface casing will be installed and the Blow Out Preventer system tested. This is expected to take approximately one week to execute.

The well will then be deepened through the target horizons in the Nanushuk Formation to a maximum total depth of 6,000'. Logging while drilling and mudlogging will provide initial indications as to the prospectivity of the well during this part of the operation, which is expected take three to five days. A sophisticated wireline logging suite will then be run, including sidewall cores and downhole sampling. Wireline logging is expected to take five to seven days.

If the results from the wireline logging are encouraging, then the well will be completed with casing and a flow test conducted.

As part of a standard cost review, 88E's share of the cost of Merlin-1 has been revised to US\$4m (increased from US\$1.4m). The main contributing factors to the cost increase are delays associated with the Executive Order regarding the issuance of the Permit to Drill; costs associated with shutdown and re-start whilst clarification was attained regarding the Executive Order; delays associated with cold weather and the subsequent knock on to mobilisation costs as a result of expediting activities to meet the operational timetable. The Company's current cash position is US\$13m, which more than funds its share of the drilling of Merlin-1 and the Company's other planned activities.

Given the operational delays, it is now considered unlikely that the Harrier-1 well will be drilled this season.

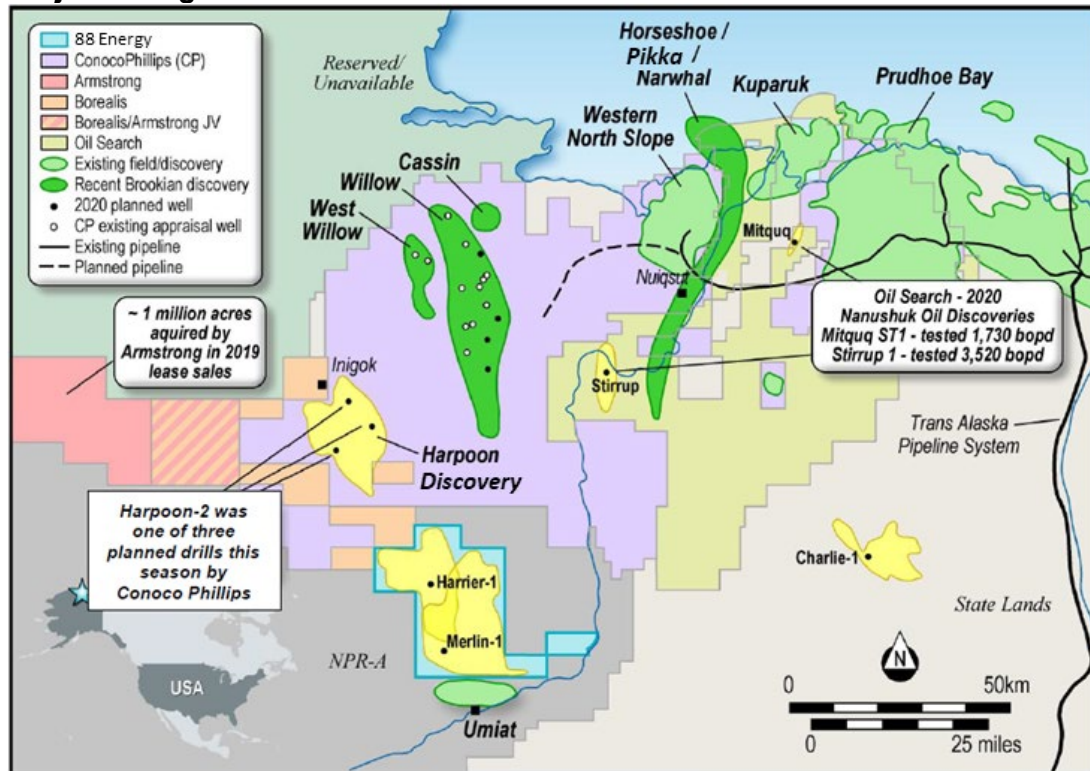
Managing Director, Dave Wall, commented: "*Drilling has now commenced at Merlin-1, with results expected within the next 4 weeks.*"

*This is an exciting and pivotal time for the Company and our shareholders."*

## About Project Peregrine – Imminent Drilling

Project Peregrine is located in the NPR-A region of the North Slope of Alaska and encompasses ~195,000 contiguous acres. It is situated on trend to recent discoveries in a newly successful play type in topset sands in the Nanushuk formation. 88 Energy has a 100% working interest in the project that will reduce to 50% post the completion of funding as part of a recent farm-in, whereby 88E is carried on the first US\$10m (of an originally estimated US\$12.6m total cost) for the Merlin-1 well.

## Project Peregrine and Recent Nanushuk Discoveries



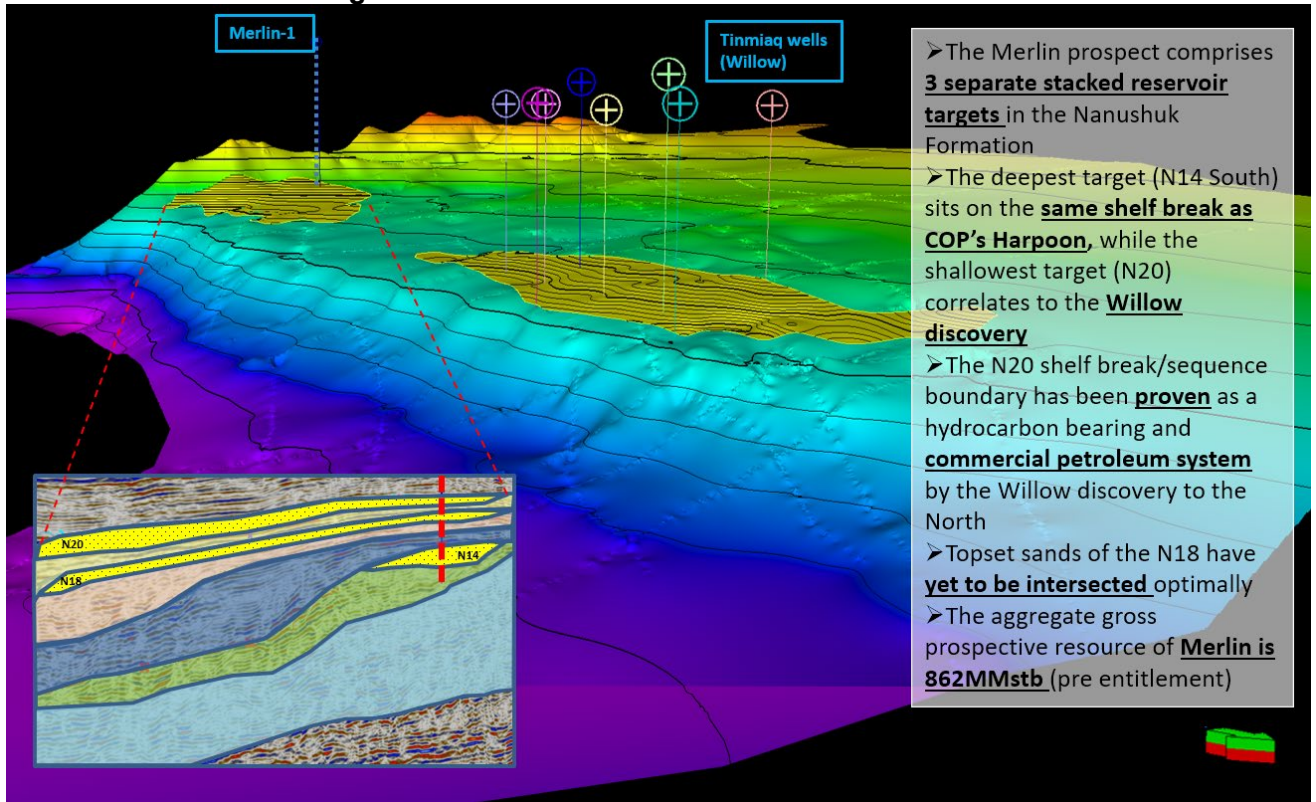
The Merlin-1 well was spudded on 10<sup>th</sup> March 2021 and is targeting 645 million barrels of gross mean prospective resource#. Flow testing of Merlin-1 is planned, if wireline logging confirms a discovery. A second well, Harrier-1, may commence immediately following completion of operations at Merlin-1, subject to results from Merlin-1, schedule and permit approvals. Harrier-1 is targeting gross mean prospective resource of 417 million barrels#.

## Independent Resource Assessment#

Project Peregrine: Alaska North Slope	Unrisked Net Entitlement to 88E Prospective Oil Resources (MMstb)				
	Low (1U)	Best (2U)	High (3U)	Mean	COS
Prospects (Probabilistic Calculations)					
Merlin (Nanushuk)	41	270	1,463	645	37%
Harrier (Nanushuk)	48	207	940	417	24%
Harrier Deep (Torok)	42	267	1,336	574	20%
<b>Prospects Total</b>				<b>1,636</b>	

#Please refer to release dated 23 February 2021 for full details with respect to the Prospective Resource estimate, associated risking and applicable Cautionary Statement.

Each of the Merlin and Harrier prospects is located on trend to an existing discovery, in the same play type (Nanushuk topsets). This has de-risked the prospects considerably and resulted in a relatively high independently estimated geological chance of success.

**Merlin-1 – on trend to large Willow oil field**


*Cautionary Statement: The estimated quantities of petroleum that may be potentially recovered by the application of a future development project relate to undiscovered accumulations. These estimates have both an associated risk of discovery and a risk of development. Further exploration, appraisal and evaluation are required to determine the existence of a significant quantity of potentially movable hydrocarbons.*

This announcement has been authorised by the Board.

**Yours faithfully**



**Dave Wall**  
**Managing Director**  
**88 Energy Ltd**

Media and Investor Relations:

**88 Energy Ltd**  
 Dave Wall, Managing Director

**Finlay Thomson**, Investor Relations

**EurozHartleys Ltd**  
 Dale Bryan

**Cenkos Securities**  
 Neil McDonald / Derrick Lee

**www. 88energy.com**

Tel: +61 8 9485 0990  
 Email: [admin@88energy.com](mailto:admin@88energy.com)

Tel: +44 7976 248471

Tel: + 61 8 9268 2829

Tel: + 44 131 220 6939

For personal use only