



15<sup>th</sup> September 2017

## SIGNIFICANT EXPANSION OF DOBSINA Co-Ni-Cu PROJECT

- *Rejdova Licence secured by EUC through direct application*
- *Total cumulative five element vein strike length has increased from 3km to over 20km through acquisition of Rejdova*
  - *Five element veins host Co-Ni-Cu-Ag mineralisation at Dobsina*
- *Historical copper mine located within the Licence with 800m of underground development to a depth of approximately 80m*
- *Extensive malachite and azurite copper mineralisation observed on Rejdova Copper mine waste dumps- assays of rock chips pending*
- *Detailed geological mapping and geochemical sampling commenced to prioritise targets for further exploration*

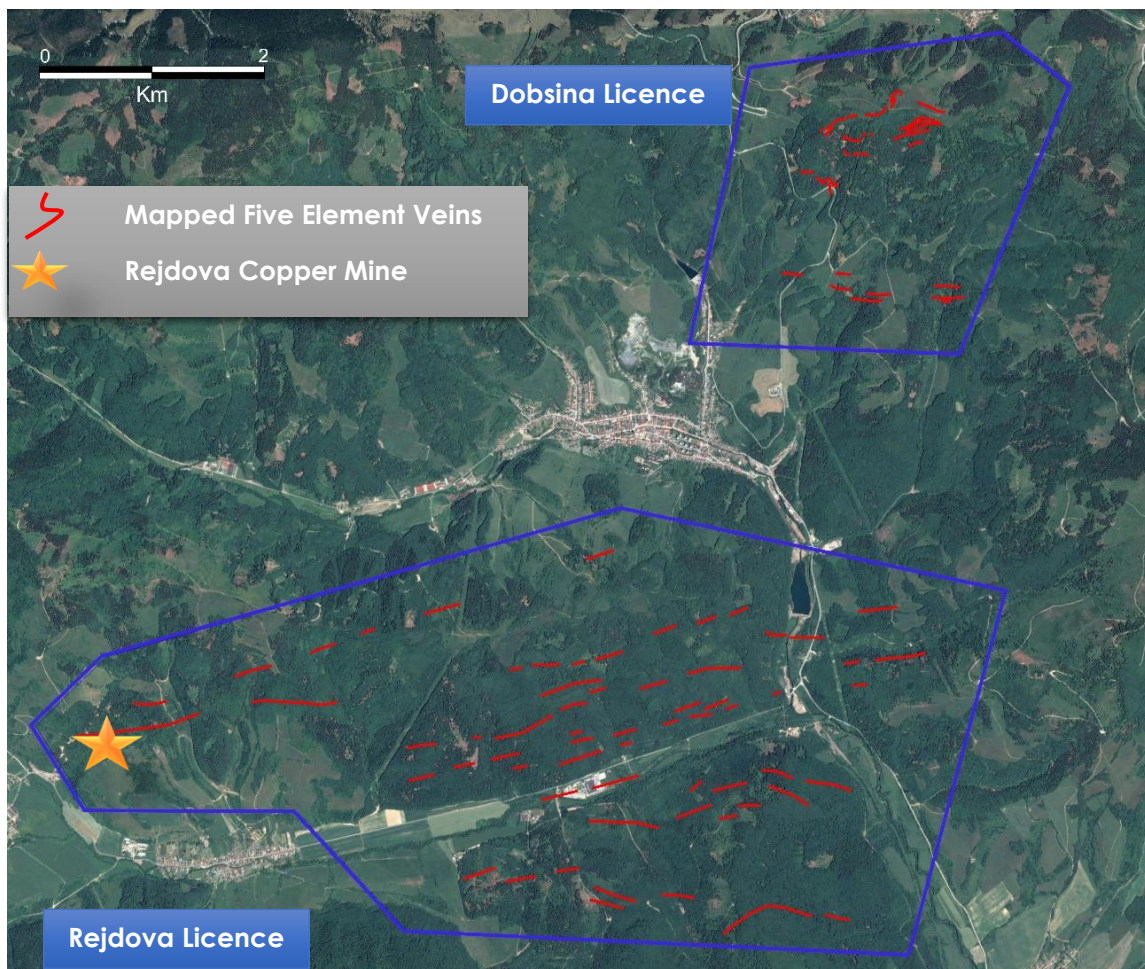


Figure 1: Dobsina & Rejdova Licences with mapped five element type veins

For personal use only





EUROPEANCOBALT

European Cobalt Ltd ("EUC" or "the Company", ASX: EUC) is pleased to announce the acquisition of the Rejdova Licence ("Rejdova") via application across vacant tenure. Rejdova is located adjacent to EUC's Dobsina Project.

Managing Director of EUC, Mr Robert Jewson commented "Rejdova represents a significant expansion to EUC's flagship Dobsina Project. The immense scale enhancement through this direct licence application underpins the rapid exploration and evaluation approach employed. A detailed geological mapping and geochemical sampling program has commenced to allow EUC to prioritise targets for further exploration."

---

## REJDOVA LICENCE



Figure 2: Rejdova Copper Mine



Figure 3: Rejdova Waste Dump

Figure 4: Rejdova Waste Rock (Malachite/Azurite Oxide Copper Mineralisation)

For personal use only



Rejdova is located 2km south of EUC's Dobsina Project and mapping completed to date has indicated that the mineralised veins at Rejdova appear to be similar to that of the mineralised veins mapped at Dobsina. The Rejdova mineralised veins have been mapped over a corridor of >7km strike by 3.4km width.

Historical underground mining at the Rejdova Copper Mine extends over a strike length of 800m and to a depth of ~80m.

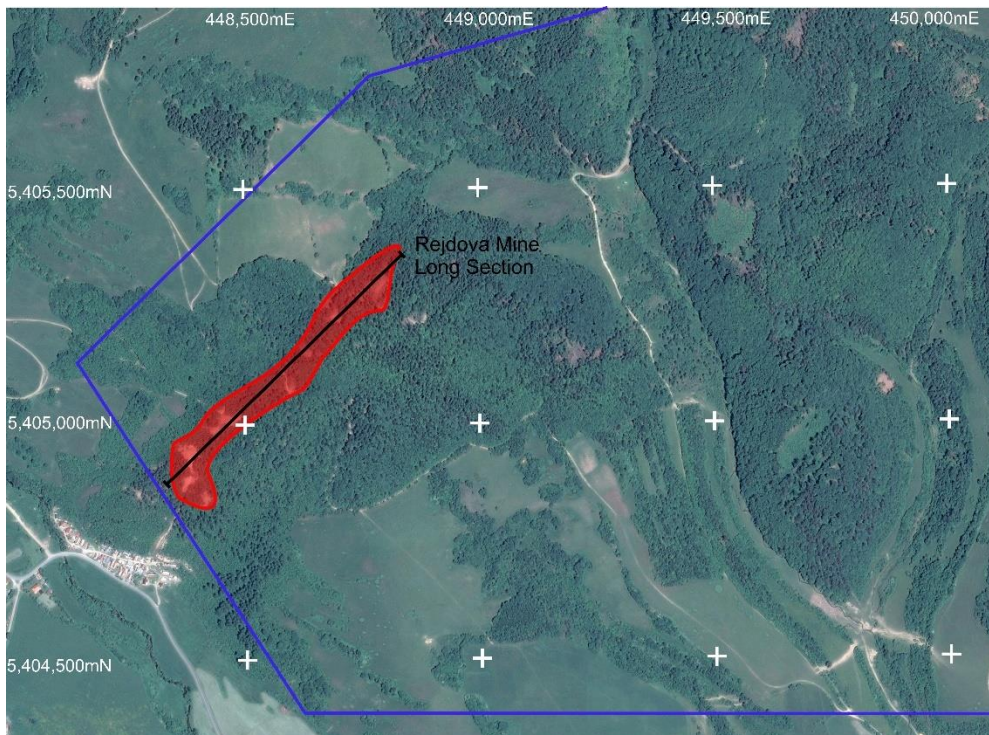


Figure 5: Rejdova Plan View

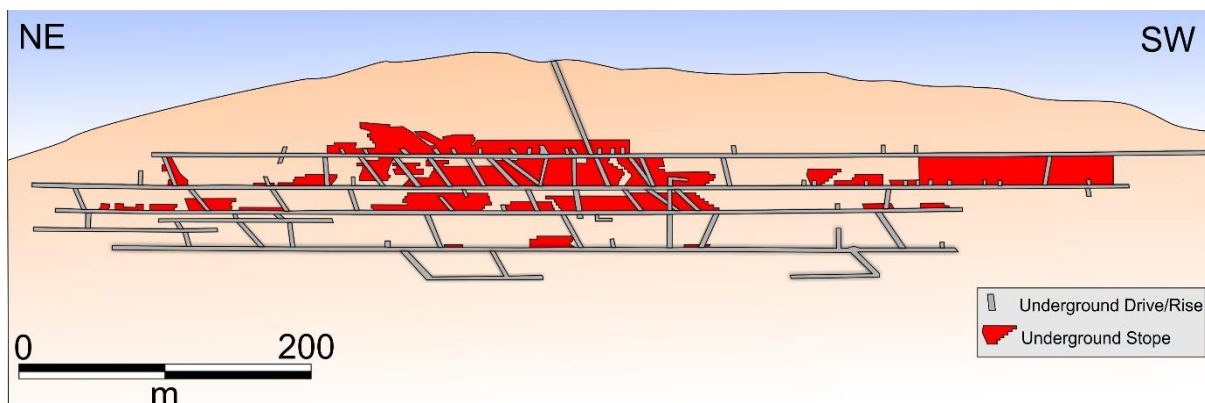


Figure 6: Long Section of Underground Workings at Rejdova

For personal use only





EUROPEANCOBALT

### Work Program

A systematic field based exploration program including geological mapping and sampling is proposed to be conducted to confirm the extent of mineralisation historically mapped within the Rejdova Licence.

An open file literature search aiming to identify further information towards previous exploration and mining activities conducted across Rejdova has also commenced.

Further releases will be made with respect to Rejdova Project updates as they become available.

For personal use only



---

**DISCLAIMER**

*Forward-looking statements are statements that are not historical facts. Words such as “expect(s)”, “feel(s)”, “believe(s)”, “will”, “may”, “anticipate(s)” and similar expressions are intended to identify forward-looking statements. These statements include, but are not limited to statements regarding future production, resources or reserves and exploration results. All of such statements are subject to certain risks and uncertainties, many of which are difficult to predict and generally beyond the control of the Company, that could cause actual results to differ materially from those expressed in, or implied or projected by, the forward-looking information and statements. These risks and uncertainties include, but are not limited to: (i) those relating to the interpretation of drill results, the geology, grade and continuity of mineral deposits and conclusions of economic evaluations, (ii) risks relating to possible variations in reserves, grade, planned mining dilution and ore loss, or recovery rates and changes in project parameters as plans continue to be refined, (iii) the potential for delays in exploration or development activities or the completion of feasibility studies, (iv) risks related to commodity price and foreign exchange rate fluctuations, (v) risks related to failure to obtain adequate financing on a timely basis and on acceptable terms or delays in obtaining governmental approvals or in the completion of development or construction activities, and (vi) other risks and uncertainties related to the Company’s prospects, properties and business strategy. Our audience is cautioned not to place undue reliance on these forward-looking statements that speak only as of the date hereof, and we do not undertake any obligation to revise and disseminate forward-looking statements to reflect events or circumstances after the date hereof, or to reflect the occurrence of or non-occurrence of any events.*

---

**COMPETENT PERSONS STATEMENT:**

The information in this announcement that relates to the Exploration Results for Dobsina and Rejdova is based on information compiled and fairly represented by Mr Robert Jewson, who is a Member of the Australian Institute of Geoscientists and Managing Director of European Cobalt Ltd. Mr Jewson has sufficient experience relevant to the style of mineralisation and type of deposit under consideration, and to the activity which he has undertaken, to qualify as a Competent Person as defined in the 2012 Edition of the Joint Ore Reserves Committee (JORC) Australasian Code for Reporting of Exploration Results, Mineral Resources and Ore Reserves. Mr Jewson consents to the inclusion in this report of the matters based on this information in the form and context in which it appears.

For personal use only



JORC CODE, 2012 EDITION – TABLE 1

Section 1 Sampling Techniques and Data

(Criteria in this section apply to all succeeding sections.)

Criteria	JORC Code explanation	Comments
Sampling techniques	<ul style="list-style-type: none"> <li>Nature and quality of sampling (eg cut channels, random chips, or specific specialised industry standard measurement tools appropriate to the minerals under investigation, such as down hole gamma sondes, or handheld XRF instruments, etc.). These examples should not be taken as limiting the broad meaning of sampling.</li> </ul>	Selective samples of mineralisation were identified, photographed, logged and sampled on site.
	<ul style="list-style-type: none"> <li>Include reference to measures taken to ensure sample representivity and the appropriate calibration of any measurement tools or systems used.</li> </ul>	The mineralised samples selected were selected in order to obtain an understand the style and tenor of mineralisation prior to systematic work being undertaken.
	<ul style="list-style-type: none"> <li>Aspects of the determination of mineralisation that are Material to the Public Report. In cases where 'industry standard' work has been done this would be relatively simple (eg 'reverse circulation drilling was used to obtain 1 m samples from which 3 kg was pulverised to produce a 30 g charge for fire assay'). In other cases more explanation may be required, such as where there is coarse gold that has inherent sampling problems. Unusual commodities or mineralisation types (eg submarine nodules) may warrant disclosure of detailed information.</li> </ul>	3kg samples were selected for both retaining for reference and geochemical sampling. No geochemical analysis completed on samples at present.
	<ul style="list-style-type: none"> <li>In cases where 'industry standard' work has been done this would be relatively simple (eg 'reverse circulation drilling was used to obtain 1 m samples from which 3 kg was pulverised to produce a 30 g charge for fire assay'). In other cases more explanation may be required, such as where there is coarse gold that has inherent sampling problems. Unusual commodities or mineralisation types (eg submarine nodules) may warrant disclosure of detailed information.</li> </ul>	The sampling undertaken is purely for reconnaissance purposes. 3kg samples were taken and will be submitted for geochemical analysis.
Drilling techniques	<ul style="list-style-type: none"> <li>Drill type (eg core, reverse circulation, open-hole hammer, rotary air blast, auger, Bangka, sonic, etc) and details (eg core diameter, triple or standard tube, depth of diamond tails, face-sampling bit or other type, whether core is oriented and if so, by what method, etc).</li> </ul>	No drilling results have been included this release.

For personal use only



Criteria	JORC Code explanation	Comments
<b>Drill sample recovery</b>	<ul style="list-style-type: none"> <li>Method of recording and assessing core and chip sample recoveries and results assessed.</li> </ul>	No drilling results have been included this release.
	<ul style="list-style-type: none"> <li>Measures taken to maximise sample recovery and ensure representative nature of the samples.</li> </ul>	No drilling results have been included this release.
	<ul style="list-style-type: none"> <li>Whether a relationship exists between sample recovery and grade and whether sample bias may have occurred due to preferential loss/gain of fine/coarse material.</li> </ul>	No drilling results have been included this release.
<b>Logging</b>	<ul style="list-style-type: none"> <li>Whether core and chip samples have been geologically and geotechnically logged to a level of detail to support appropriate Mineral Resource estimation, mining studies and metallurgical studies.</li> </ul>	Detailed geological logging has been completed on the selected samples. The samples are reconnaissance in nature and are not suitable for inclusion in a mineral resource estimation.
	<ul style="list-style-type: none"> <li>Whether logging is qualitative or quantitative in nature. Core (or costean, channel, etc) photography.</li> </ul>	Logging of rock chips was completed both on a qualitative and quantitative basis.
	<ul style="list-style-type: none"> <li>The total length and percentage of the relevant intersections logged.</li> </ul>	No drilling, rock chip sampling only.
<b>Sub-sampling techniques and sample preparation</b>	<ul style="list-style-type: none"> <li>If core, whether cut or sawn and whether quarter, half or all core taken.</li> </ul>	No drilling, rock chip sampling only.
	<ul style="list-style-type: none"> <li>If non-core, whether riffled, tube sampled, rotary split, etc and whether sampled wet or dry.</li> </ul>	No drilling, rock chip sampling only.
	<ul style="list-style-type: none"> <li>For all sample types, the nature, quality and appropriateness of the sample preparation technique.</li> </ul>	No geochemical analysis completed yet.
	<ul style="list-style-type: none"> <li>Quality control procedures adopted for all sub-sampling stages to maximise representivity of samples.</li> </ul>	No sub-sampling process completed.
	<ul style="list-style-type: none"> <li>Measures taken to ensure that the sampling is representative of the in situ material collected, including for instance results for field duplicate/second-half sampling.</li> </ul>	Field duplicates of selected samples was completed on a ratio of 1 duplicate for every 20 samples taken.
	<ul style="list-style-type: none"> <li>Whether sample sizes are appropriate to the grain size of the material being sampled.</li> </ul>	3kg samples for rock chip sampling of this nature is considered sufficient.
<b>Quality of assay data and laboratory tests</b>	<ul style="list-style-type: none"> <li>The nature, quality and appropriateness of the assaying and laboratory procedures used and whether the technique is considered partial or total.</li> </ul>	No geochemical analysis completed to date.
	<ul style="list-style-type: none"> <li>For geophysical tools, spectrometers, handheld XRF instruments, etc, the parameters used in determining the analysis including instrument make and model, reading times, calibrations factors applied and their derivation, etc.</li> </ul>	No geophysical instruments used

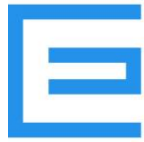
For personal use only



Criteria	JORC Code explanation	Comments
	<ul style="list-style-type: none"> <li>Nature of quality control procedures adopted (eg standards, blanks, duplicates, external laboratory checks) and whether acceptable levels of accuracy (ie lack of bias) and precision have been established.</li> </ul>	Field duplicates of 1 duplicate sample per 20 samples taken was applied. Samples have not yet been submitted for geochemical analysis.
<b>Verification of sampling and assaying</b>	<ul style="list-style-type: none"> <li>The verification of significant intersections by either independent or alternative company personnel.</li> </ul>	No assay results reported.
	<ul style="list-style-type: none"> <li>The use of twinned holes.</li> </ul>	No drilling, rock chip sampling only.
	<ul style="list-style-type: none"> <li>Documentation of primary data, data entry procedures, data verification, data storage (physical and electronic) protocols.</li> </ul>	Field logging of samples was recorded using paper sample register. The information was subsequently digitised and stored in an access database.
	<ul style="list-style-type: none"> <li>Discuss any adjustment to assay data.</li> </ul>	No assay data reported.
<b>Location of data points</b>	<ul style="list-style-type: none"> <li>Accuracy and quality of surveys used to locate drill holes (collar and down-hole surveys), trenches, mine workings and other locations used in Mineral Resource estimation.</li> </ul>	Hand held GPS was utilised in order to locate samples taken.
	<ul style="list-style-type: none"> <li>Specification of the grid system used.</li> </ul>	UTM-WGS84- zone 34N
	<ul style="list-style-type: none"> <li>Quality and adequacy of topographic control.</li> </ul>	A digital terrain model was generated from 1:50,000 topographic map. The quality of the DTM is sufficient for the stage of exploration for the Project.
<b>Data spacing and distribution</b>	<ul style="list-style-type: none"> <li>Data spacing for reporting of Exploration Results.</li> </ul>	Rock chip information gathered from selected mullock samples was spaced irregularly due to the reconnaissance nature of the program being undertaken.
	<ul style="list-style-type: none"> <li>Whether the data spacing and distribution is sufficient to establish the degree of geological and grade continuity appropriate for the Mineral Resource and Ore Reserve estimation procedure(s) and classifications applied.</li> </ul>	Not attempting to establish a mineral resource only guide the prospectivity and future drilling
	<ul style="list-style-type: none"> <li>Whether sample compositing has been applied.</li> </ul>	No sample compositing is completed.
<b>Orientation of data in relation to geological structure</b>	<ul style="list-style-type: none"> <li>Whether the orientation of sampling achieves unbiased sampling of possible structures and the extent to which this is known, considering the deposit type.</li> </ul>	No documentation with respect to the orientation of samples and potential of bias.
	<ul style="list-style-type: none"> <li>If the relationship between the drilling orientation and the orientation of key mineralised structures is considered to have introduced a sampling bias, this should be assessed and reported if material.</li> </ul>	No drilling, rock chip sampling only.
<b>Sample security</b>	<ul style="list-style-type: none"> <li>The measures taken to ensure sample security.</li> </ul>	Samples were taken and transported by EUC staff and contractors to a secure facility.
<b>Audits or reviews</b>	<ul style="list-style-type: none"> <li>The results of any audits or reviews of sampling techniques and data.</li> </ul>	None conducted

For personal use only





**SECTION 2 REPORTING OF EXPLORATION RESULTS**

(Criteria listed in the preceding section also apply to this section.)

Criteria	JORC Code explanation	Commentary
<b>Mineral tenement and land tenure status</b>	<ul style="list-style-type: none"> <li>Type, reference name/number, location and ownership including agreements or material issues with third parties such as joint ventures, partnerships, overriding royalties, native title interests, historical sites, wilderness or national park and environmental settings.</li> </ul>	Rejdova consists of a granted Licence (License number 7007/2017-5.3) covering a land area of 22.62km <sup>2</sup> , held by CE Metals s.r.o, a 100% wholly owned subsidiary of NiCo Minerals Pty Ltd, a 100% wholly owned subsidiary of European Cobalt Ltd.
	<ul style="list-style-type: none"> <li>The security of the tenure held at the time of reporting along with any known impediments to obtaining a licence to operate in the area.</li> </ul>	No known impediments exist with respect to the exploration or development of Rejdova Project.
<b>Exploration done by other parties</b>	<ul style="list-style-type: none"> <li>Acknowledgment and appraisal of exploration by other parties.</li> </ul>	At present the only identified activities conducted across the site has been completed by previous mining operators.
<b>Geology</b>	<ul style="list-style-type: none"> <li>Deposit type, geological setting and style of mineralisation.</li> </ul>	<p>The Rejdova Project is located directly to the south of Dobsina Project. The Rejdova prospect is reportedly underlain mainly by Late Paleozoic volcani-sedimentary formations and re-sedimented basalt- and basalt pyroclastics.</p> <p>Economic minerals noted to occur at Rejdova include eurethrite (secondary cobalt mineral), chalcopyrite, malachite and azurite.</p> <p>Mineralisation within the Rejdova Mine appears to follow two large quartz vein systems which were mineralised with copper oxide minerals including malachite and azurite.</p>
<b>Drill hole Information</b>	<ul style="list-style-type: none"> <li>A summary of all information material to the understanding of the exploration results including a tabulation of the following information for all Material drill holes:</li> </ul>	No drilling performed
	<ul style="list-style-type: none"> <li>o easting and northing of the drill hole collar</li> </ul>	No drilling performed
	<ul style="list-style-type: none"> <li>o elevation or RL (Reduced Level – elevation above sea level in metres) of the drill hole collar</li> </ul>	No drilling performed
	<ul style="list-style-type: none"> <li>o dip and azimuth of the hole</li> </ul>	No drilling performed
	<ul style="list-style-type: none"> <li>o down hole length and interception depth</li> </ul>	No drilling performed
	<ul style="list-style-type: none"> <li>o hole length.</li> </ul>	No drilling performed

For personal use only



Criteria	JORC Code explanation	Commentary
	<ul style="list-style-type: none"> <li>If the exclusion of this information is justified on the basis that the information is not Material and this exclusion does not detract from the understanding of the report, the Competent Person should clearly explain why this is the case.</li> </ul>	All available information has been released.
Data aggregation methods	<ul style="list-style-type: none"> <li>In reporting Exploration Results, weighting averaging techniques, maximum and/or minimum grade truncations (eg cutting of high grades) and cut-off grades are usually Material and should be stated.</li> </ul>	No aggregation methods applied
	<ul style="list-style-type: none"> <li>Where aggregate intercepts incorporate short lengths of high grade results and longer lengths of low grade results, the procedure used for such aggregation should be stated and some typical examples of such aggregations should be shown in detail.</li> </ul>	No aggregation methods applied
	<ul style="list-style-type: none"> <li>The assumptions used for any reporting of metal equivalent values should be clearly stated.</li> </ul>	No metal equivalence are reported.
Relationship between mineralisation widths and intercept lengths	<ul style="list-style-type: none"> <li>These relationships are particularly important in the reporting of Exploration Results.</li> </ul>	No drilling performed
	<ul style="list-style-type: none"> <li>If the geometry of the mineralisation with respect to the drill hole angle is known, its nature should be reported.</li> </ul>	No drilling performed
	<ul style="list-style-type: none"> <li>If it is not known and only the down hole lengths are reported, there should be a clear statement to this effect (eg 'down hole length, true width not known').</li> </ul>	No drilling performed
Diagrams	<ul style="list-style-type: none"> <li>Appropriate maps and sections (with scales) and tabulations of intercepts should be included for any significant discovery being reported. These should include, but not be limited to a plan view of drill hole collar locations and appropriate sectional views.</li> </ul>	Maps and plans have been included in announcement.

For personal use only



Criteria	JORC Code explanation	Commentary
<b>Balanced reporting</b>	<ul style="list-style-type: none"><li>Where comprehensive reporting of all Exploration Results is not practicable, representative reporting of both low and high grades and/or widths should be practiced to avoid misleading reporting of Exploration Results.</li></ul>	All results including those with no significant results have been reported.
<b>Other substantive exploration data</b>	<ul style="list-style-type: none"><li>Other exploration data, if meaningful and material, should be reported including (but not limited to): geological observations; geophysical survey results; geochemical survey results; bulk samples – size and method of treatment; metallurgical test results; bulk density, groundwater, geotechnical and rock characteristics; potential deleterious or contaminating substances.</li></ul>	No other exploration data is considered meaningful and material to this announcement.
<b>Further work</b>	<ul style="list-style-type: none"><li>The nature and scale of planned further work (eg tests for lateral extensions or depth extensions or large-scale step-out drilling).</li></ul>	Detailed geological mapping, geochemical sampling and acquisition/translation/digitisation of historical exploration data is to be undertaken.
	<ul style="list-style-type: none"><li>Diagrams clearly highlighting the areas of possible extensions, including the main geological interpretations and future drilling areas, provided this information is not commercially sensitive.</li></ul>	Further activities will be planned upon completion of the field reconnaissance and data collation.

For personal use only