

For personal use only

The image features a close-up of a mineral specimen, likely a rock face, with a dark, textured surface. A prominent, bright green mineral vein or inclusion runs diagonally across the upper right portion of the specimen. The overall color palette is dominated by dark greys and blacks, with scattered patches of reddish-pink and the vibrant green of the mineral inclusion. The European Cobalt logo is overlaid on the left side of the image, consisting of a stylized 'E' made of blue horizontal bars, followed by a vertical white line, and then the company name in white and blue text.

EUROPEANCOBALT

## Disclaimer

*This presentation has been prepared by European Cobalt Ltd "EUC". This document contains background information about EUC current at the date of this presentation. The presentation is in summary form and does not purport to be all inclusive or complete. Recipients should conduct their own investigations and perform their own analysis in order to satisfy themselves as to the accuracy and completeness of the information, statements and opinions contained in this presentation.*

*This presentation is for information purposes only. Neither this presentation nor the information contained in it constitutes an offer, invitation, solicitation or recommendation in relation to the purchase or sales of shares in any jurisdiction.*

*This presentation does not constitute investment advice and has been prepared without taking into account the recipient's investment objectives, financial circumstances or particular needs and the opinions and recommendations in this presentation are not intended to represent recommendations of particular investments to particular persons. Recipients should seek professional advice when deciding if an investment is appropriate. All securities involve risks which include (among others) the risk of adverse or unanticipated market, financial or political developments.*

*To the fullest extent permitted by law, EUC, its officers, employees, agents and advisors do not make any representation or warranty, express or implied, as to the currency, accuracy, reliability or completeness of any information, statements, opinions, estimates, forecasts or other representations contained in this presentation. No responsibility for any errors or omissions from this presentation arising out of negligence or otherwise are accepted.*

*This presentation may include forward-looking statements. Forward-looking statements are only predictions and are subject to risks, uncertainties and assumptions which are outside the control of EUC. Actual values, results or events may be materially different to those expressed or implied in this presentation. Given these uncertainties, recipients are cautioned not to place reliance on forward looking statements. Any forward looking statements in this presentation speak only at the date of issue of this presentation. Subject to any continuing obligations under applicable law, EUC does not undertake any obligation to update or revise any information or any of the forward looking statements in this presentation or any changes in events, conditions, or circumstances on which any such forward looking statement is based.*

## Reference sources

*"High Grade Historical Cobalt Mine Acquisition" 27<sup>th</sup> February 2017, "High Grade Cobalt and Nickel Results at Dobsina" 26<sup>th</sup> June 2017, "Intensive Exploration Program Commences at Dobsina" 5<sup>th</sup> July 2017, "Ground Geophysical Surveys Commence at Dobsina" 18<sup>th</sup> July 2017, "Acquisition of Cobalt-Copper-Nickel-Silver Sulphide Mine" 26<sup>th</sup> July 2017, "Acquisition of High Grade Cobalt-Copper Project in Finland" 2<sup>nd</sup> August 2017*

## Competent Persons Statement

*The information in this announcement that relates to Dobsina, Jouhineva and Kobla Project Exploration Results is based on information compiled and fairly represented by Mr Robert Jewson, who is a Member of the Australian Institute of Geoscientists and Managing Director of European Cobalt Ltd. Mr Jewson has sufficient experience relevant to the style of mineralisation and type of deposit under consideration, and to the activity which he has undertaken, to qualify as a Competent Person as defined in the 2012 Edition of the Joint Ore Reserves Committee (JORC) Australasian Code for Reporting of Exploration Results, Mineral Resources and Ore Reserves. Mr Jewson consents to the inclusion in this report of the matters based on this information in the form and context in which it appears.*



## Dobsina, Slovakia (100% EUC)

- ✓ **High grade, cobalt-nickel mine** located in central Slovakia with **historical production grades of up to 8% Cobalt & 17% Nickel from sulphide mineralisation**
- ✓ No modern exploration activities conducted to date- **modern EM systems has potential to delineate additional sulphide cobalt-nickel mineralisation-** survey completed, awaiting results

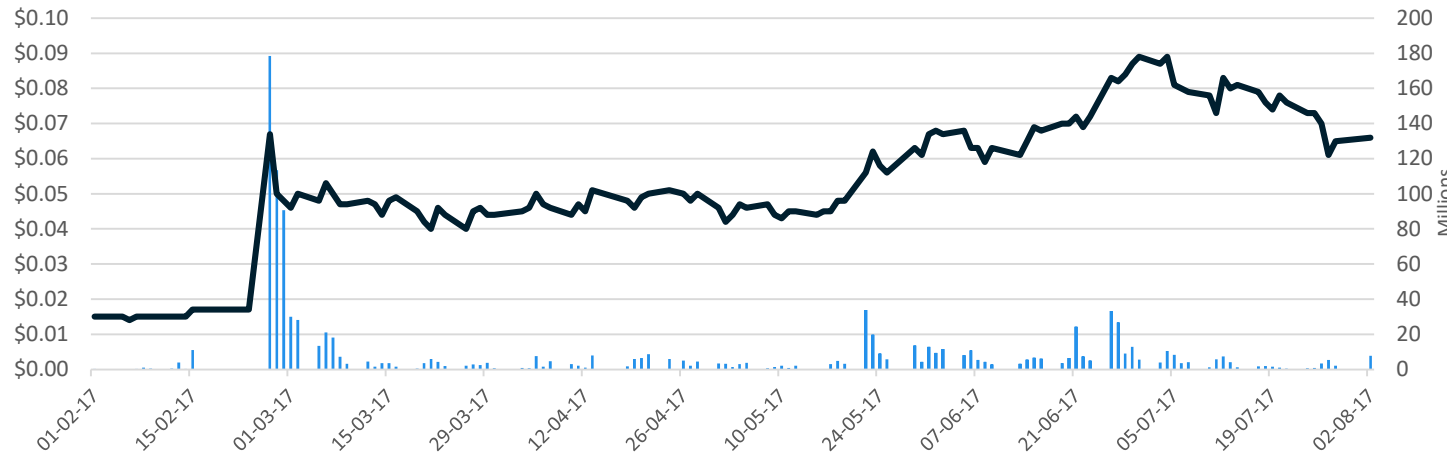
## Jouhineva, Finland (Option to Acquire 100%)

- ✓ **High grade, drill tested Project, proximal to two processing facilities and specialist cobalt smelter**
- ✓ Extensive due diligence program underway

## EUC Company Strategy

- ✓ **Acquire value accretionary cobalt assets** throughout Europe to build a project pipeline
- ✓ Explore and develop cobalt assets that meet EUC's selection criteria
- ✓ Divestment of assets deemed to be non-core to deliver value to shareholders





## POST ACQUISITION CAPITAL STRUCTURE

<b>Market Cap at \$0.064</b> (04/08/2017)	<b>\$42 M</b>
<b>Shares on Issue</b>	<b>651 M</b>
<b>Options on Issue</b>	<b>112 M</b>
<b>Current Cash</b>	<b>~\$3M</b>

## BOARD OF DIRECTORS

### Robert Jewson (Managing Director)

Mr Jewson is a geologist with 11 years of experience from junior to major mining and exploration companies throughout a variety of jurisdictions and commodities. He has conducted both corporate and technical roles within the mining and exploration sectors inclusive of due diligence, business development, exploration management, acquisitions/divestment and corporate structuring.

### Tolga Kumova (Non-Exec. Chairman)

Mr Kumova is a resources entrepreneur and corporate finance specialist with 15 years experience in stockbroking, IPO's and corporate restructure. He has raised in excess of \$500M throughout his career for ASX listed entities.

Former MD and Founder of Syrah Resources (ASX:SYR), an ASX200 Listed Entity. Mr Kumova led Syrah's development activities from resources through to fully funded development, inclusive of offtake negotiations and agreements.

### Don Carroll (Non Exec. Director)

Mr Carroll is a senior resources executive with 37 years experience with BHP Billiton and Rio Tinto. Mr Carroll has worked in a variety of leadership, technical, strategy, marketing and business development roles throughout his career.

Mr Carroll also has extensive experience across a broad range of commodities including iron ore, coal and aluminium.

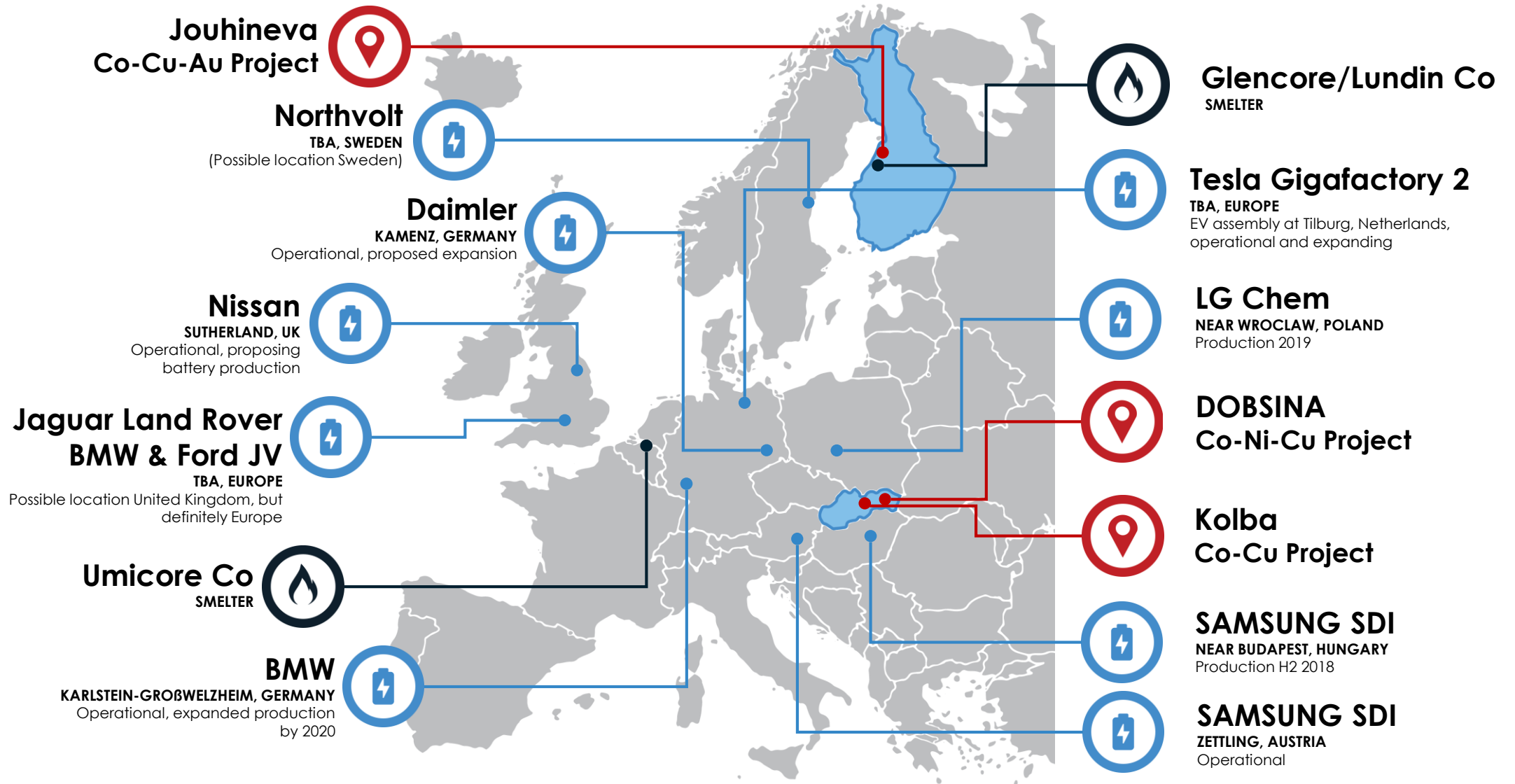
### Eddie King (Non Exec. Director)

Mr King holds a Batchelor of Commerce and Bachelor of Engineering (Mining Systems) from The University of Western Australia. Mr King is currently a representative for CPS Capital.

Mr King's past experience includes being manager for an investment banking firm, specialising in the technical and financial analysis of resource projects.

# European Cobalt for European Markets

For personal use only





**Rail Heading Adjacent to Dobsina Project**

## LOCATION & INFRASTRUCTURE

- Dobsina is located in central Slovakia, centred on historical mining town
- **Proximal to two rail sidings**
- **Hydro electric power, water, road infrastructure well established**

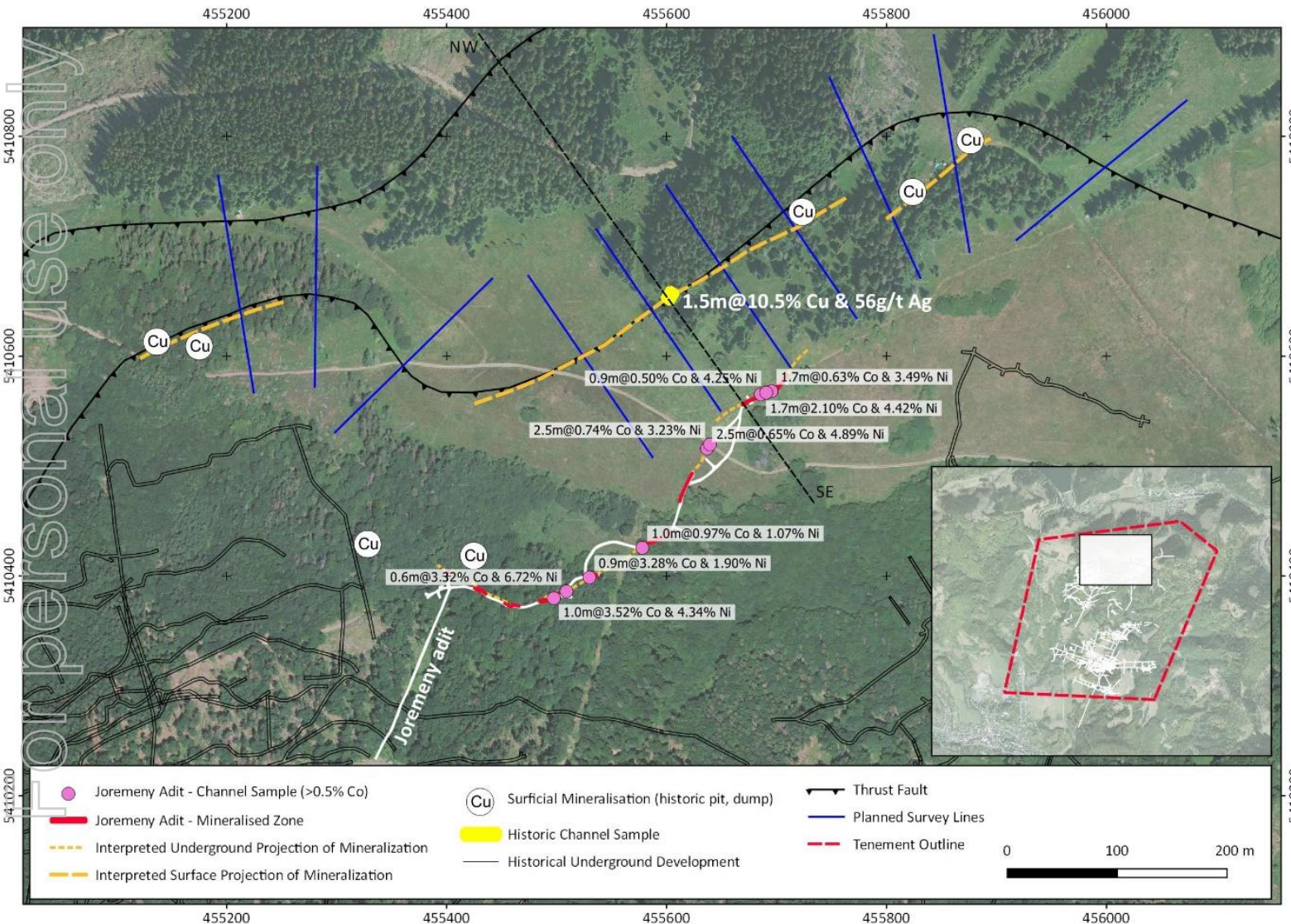
## MINING HISTORY OF DOBSINA

- Nickel-Cobalt mineralisation first recognised in 1780 and was exploited until 19<sup>th</sup> Century. **Historically produced 430,000t of high grade nickel-cobalt ore** which was hand sorted on site and shipped to UK for smelting
- Zemberg priority target area was **mined at an average grade of 4% Co & 16% Ni**
- **Multiple adit re-entry opportunities identified**, permitting underway to complete refurbishment, bulk sampling and mapping

## Exploration Underway

- ✓ Ground EM/IP/Magnetics
- ✓ Detailed Mapping
- ✓ Rock Chip Sampling
- ✓ Permitting Trenching
- ✓ Permitting Drilling
- ✓ Permitting Adit Entry
- Phase II Ground EM Survey
- Trenching
- Drilling
- Adit Sampling/Mapping

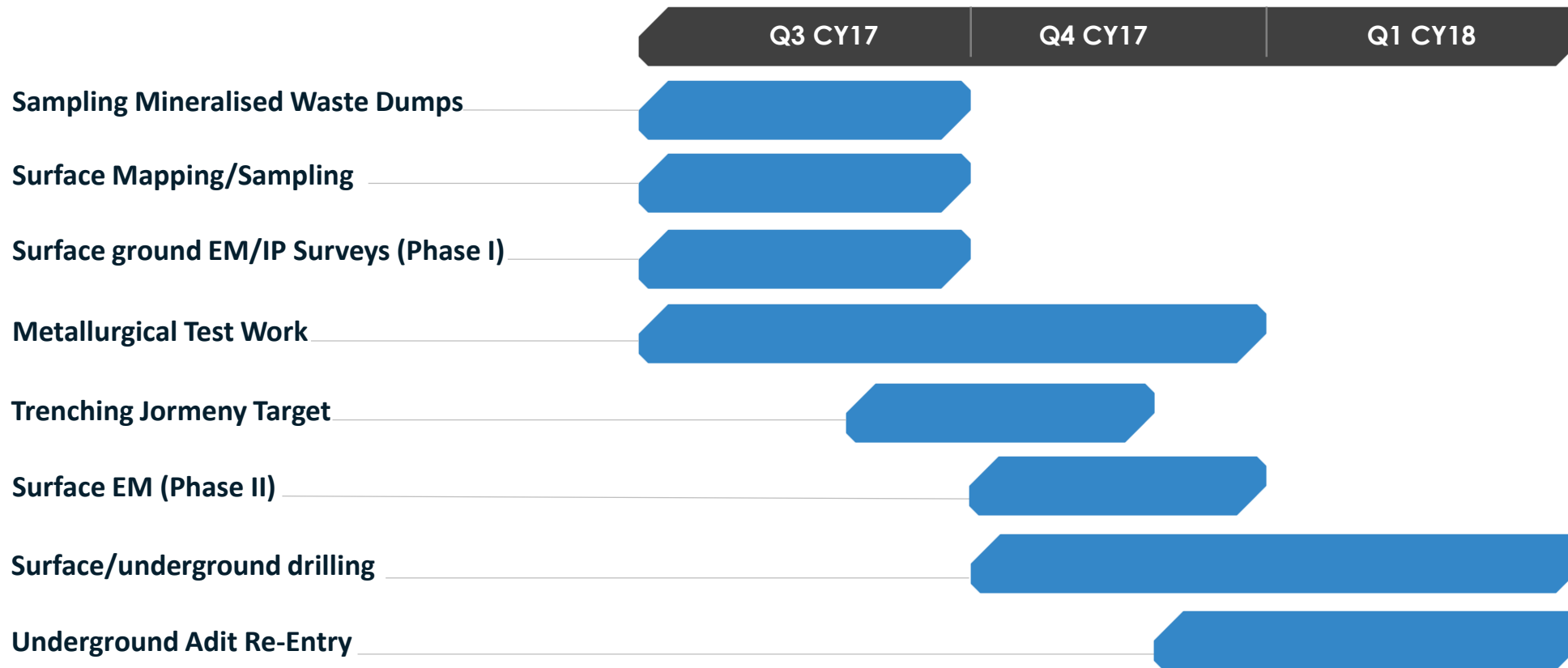




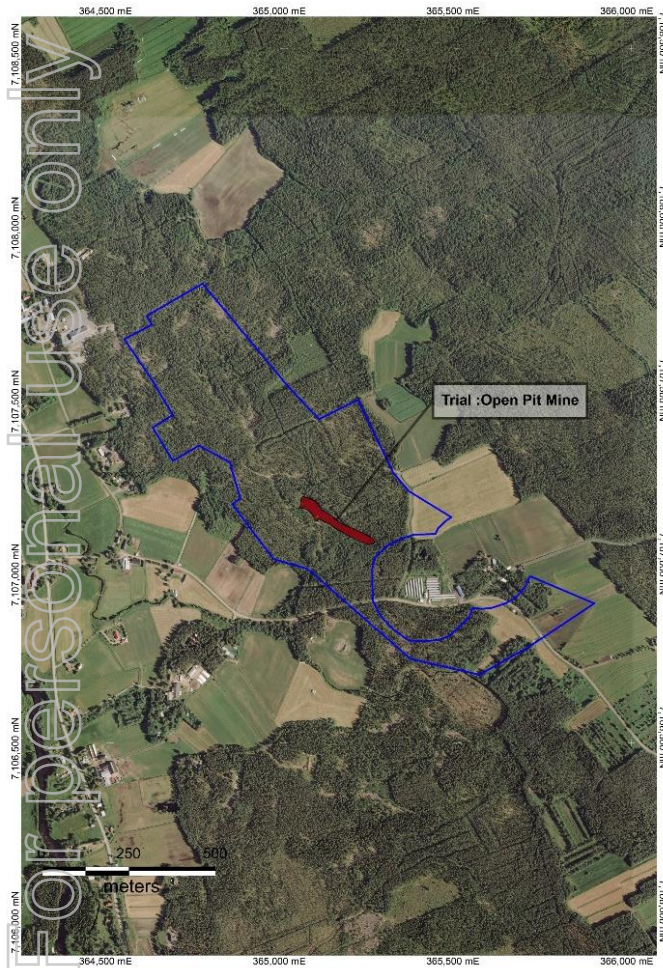
## JORMENY PRIORITY TARGET

- >1,200m strike length defined at surface
- Channel sampling from Adit, located 180m down dip of surface expression of mineralisation reported:
  - **1m at 3.52% Co & 4.34% Ni**
  - **1.7m at 2.1% Co & 4.42% Ni**
  - **2.5m at 0.74% Co & 3.23% Ni**
  - **2.5m at 0.65% Co & 4.89% Ni**
- Surface sampling has reported **1.5m at 10.5% Cu & 56g/t Ag**
- **Ground EM, IP and magnetic surveys completed- awaiting results**
- **Permitting underway for trenching, Jormeny Adit refurbishment, underground bulk sampling and drilling**

- ✓ **Geophysics completed- awaiting results**
- ✓ **Rock chip sampling campaign completed- awaiting results**
- ✓ **Permitting of adit refurbishment, trenching and drilling underway**







**Trial Open Pit Mining**

## Infrastructure

- Two processing plants located within ~100km of Project
- Freeport Cobalt's Kokkola Cobalt Refinery (Glencore/Lundin Mining JV) 70km from Project
- Power, water, road infrastructure well established
- Proximal to rail

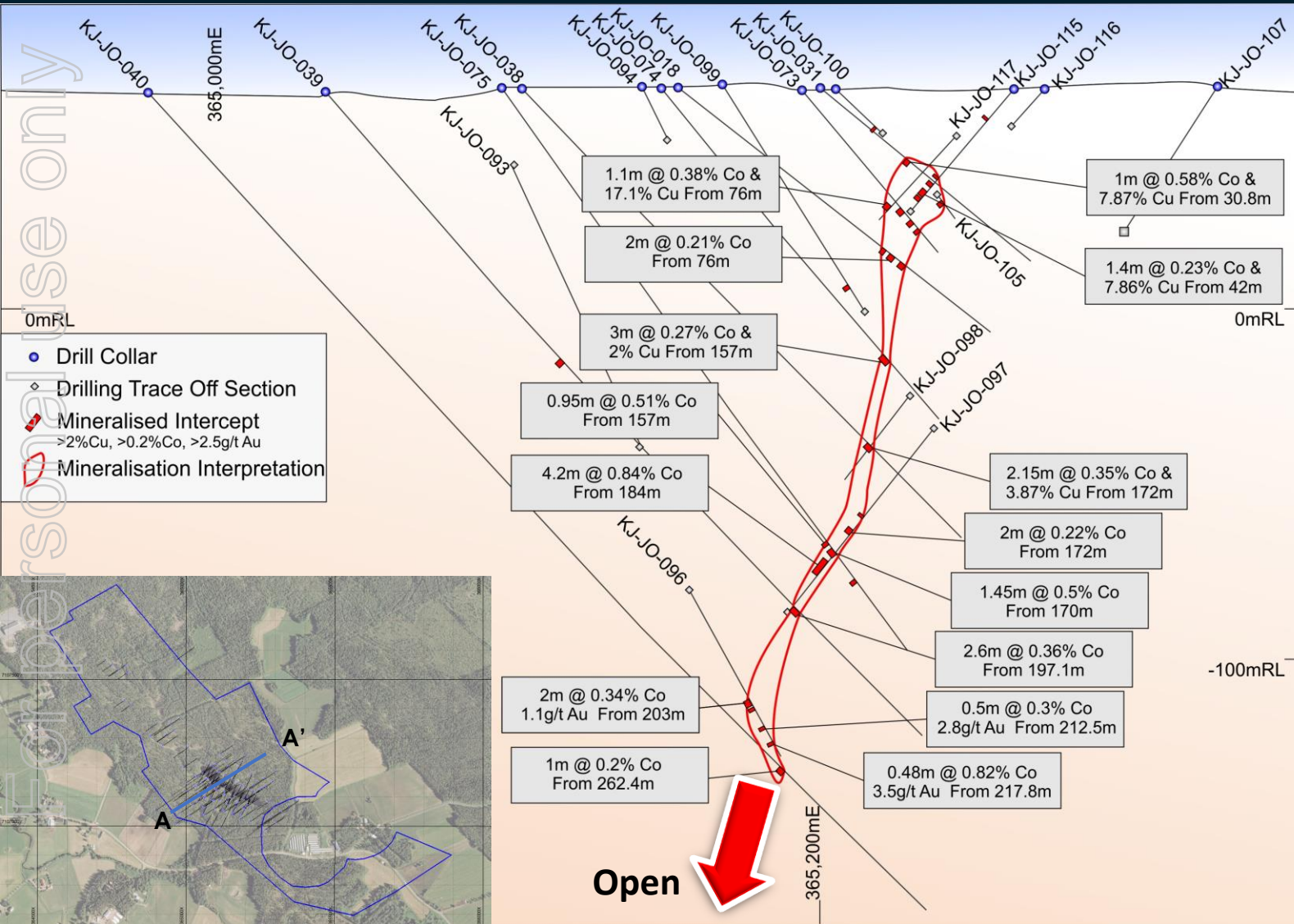
## Exploration Completed

- 119 Diamond drill holes for 14,000m completed by Outokumpu between 1980 and 1998
- 6,250t excavated in **open pit trial mining**
- **High grade cobalt-copper mineralisation defined from surface to 287m** below surface- open at depth and to north
- Extensive archive of technical reports currently being translated from Finnish to English

## Due Diligence Process

- 3D geological modelling based on the extensive drilling database
- **Submission of applications for drill permitting** for confirmatory, extensional and scout drilling of targets
- Translation of all available previous exploration reports
- Infrastructure evaluation
- Legal due diligence on title

# Jouhineva- Multiple Significant High Grade Drill Results



## Significant Intercepts Include:

- KJ-JO-057: **5.55m at 1.19% Co** from 23m
  - Including: **0.45m at 5.63% Co, 4.7g/t Au** from 23m & **0.70m at 4.04% Co** from 24.65m
- KJ-JO-034: **2.6m at 1.0% Co** and 1.9g/t Au from 41.45m
  - Including: **0.65m at 2.77% Co**, 2.5 g/t Au from 41.45m
- KJ-JO-097: **5.8m at 0.65% Co** from 184.1m
  - Including: **2m at 1.15% Co**, 1.2% Cu from 185.1m
- KJ-JO-112: **2.1m at 0.66% Co, 4.94% Cu & 4.45g/t Au** from 42.1m
- KJ-JO-047: **1.25m at 1.11% Co** from 244.9m
- KJ-JO-114: **0.95m at 0.85% Co & 5.13% Cu** from 45.5m
- KJ-JO-058: **3.5m at 0.52% Co** from 26.8m
- KJ-JO-015: **2.3m at 0.28% Co, 5.46% Cu & 6.58g/t Au** from 21.1m
- KJ-JO-031: **1m at 0.59% Co & 7.67% Cu** from 30.8m
- KJ-JO-061: **0.65m at 1.98% Co** from 371.7m

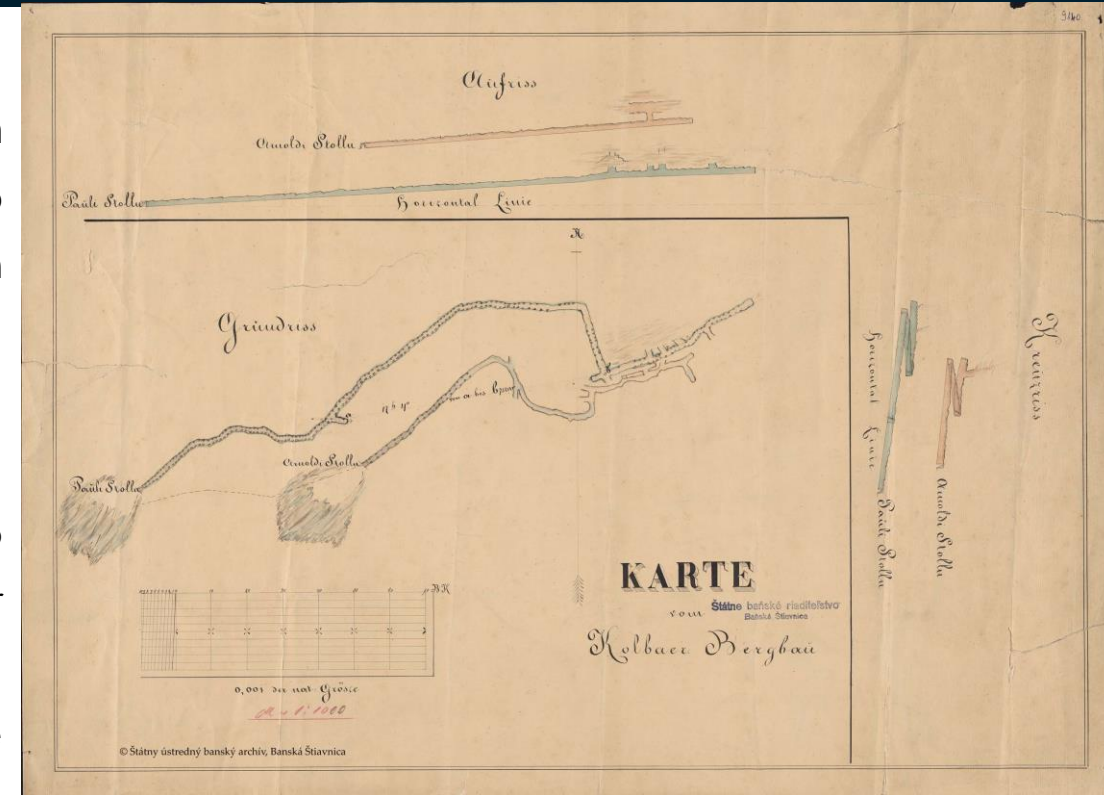




**Cobaltite and Arsenide Massive Sulphide Mineralisation- Kolba Mullock Dump**

## Location & History

- Kolba is located **70km west of EUC's flagship Dobsina Project**, in central Slovakia
- **Mined for cobalt-copper-nickel-silver mineralisation** via two levels with minor stoping
- Waste dumps are evident on site which contain sulphide mineralisation



## Kolba Historical Mine Plan Initial work Program

- Reconnaissance mapping and **rock chip sampling completed- assay results imminent**



# Key Upcoming Value Drivers

## EXPLORATION RESULTS- ALL PROJECTS

Q3 CY17

- Dobsina & Kolba: rock chip results from outcropping mineralisation & waste dumps- assay results imminent
- Dobsina: Ground IP/EM/Magnetics- results imminent
- Jouhineva: due diligence updates, forward plans

## TRENCHING & PHASE II GEOPHYSICS- DOBSINA

Q3 & 4 CY17

- Trenching to commence within a month to define thickness and grade of surficial mineralisation across priority Jormeny target
- Ground geophysical surveys to be conducted across whole northern strike extent of workings

## DRILLING-DOBSINA

Q4 CY17- ongoing

- Jormeny target to be tested via drilling based on trenching, ground geophysics and underground adit sampling/mapping
- Initial phase aims to test mineralisation between surface and adit level (~180m down dip extent and >1,200m of strike)

## UNDERGROUND ADIT RE-ENTRY- DOBSINA

Circa Q4 CY17

- Permitting of access to underground inclusive of refurbishment underway
- Underground adit access provides opportunity for metallurgical bulk sampling, detailed mapping, channel sampling and underground drilling

## ACQUISITIONS

ONGOING

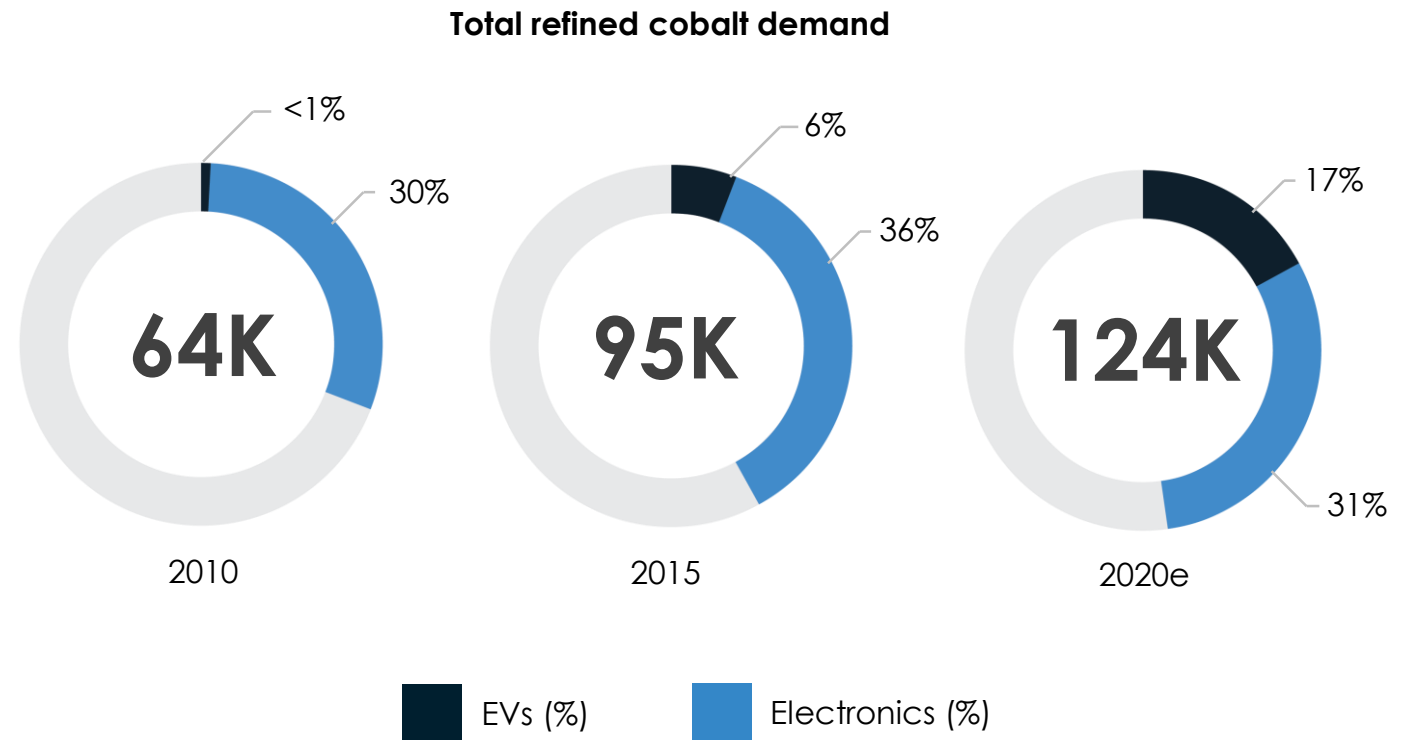
- EUC is dedicated to being the premier cobalt explorer and developer in Europe
- Synergistic acquisition opportunities actively being sought
- Assets deemed to no longer meet investment criteria will be divested to deliver shareholder value



**75%**  
of lithium-ion  
batteries will  
contain cobalt  
by 2020

- Cobalt is the most important metal for increasing energy density of lithium-ion cathodes.
- The majority of li-ions sold today use cobalt in some capacity.

**By 2020, almost 1/5 of cobalt demand will stem from electric vehicles.**



## Cobalt's extra power allows...



Longer battery life  
on smartphones



Solar and wind energy  
to be stored efficiently



Laptops to be powerful  
and slim, yet last long  
periods



Electric cars to extend  
their range between  
charges





EUROPEANCOBALT

[www.europeancobalt.com](http://www.europeancobalt.com)  
[info@europeancobalt.com](mailto:info@europeancobalt.com)

**CONTACT**

**Rob Jewson**

*Managing Director*

[rob@europeancobalt.com](mailto:rob@europeancobalt.com)

+61 8 9481 0389

Level 11 , 216 St Georges Terrace  
Perth WA 6000