

For personal use only



An Historic High Grade Gold Opportunity

For

Mr Steve Parsons
Executive Director

RIU Conference Sydney
May 2017

Disclaimer, Forward Looking Information & Competent Persons Statement

Disclaimer

This presentation has been prepared by Draig Resources Limited (the Company) based on information from its own and third party sources and is not a disclosure document. No party other than the Company has authorised or caused the issue, lodgement, submission, despatch or provision of this presentation, or takes any responsibility for, or makes or purports to make any statements, representations or undertakings in this presentation. Except for any liability that cannot be excluded by law, the Company and its related bodies corporate, directors, employees, servants, advisers and agents (Affiliates) disclaim and accept no responsibility or liability for any expenses, losses, damages or costs incurred by you relating in any way to this presentation including, without limitation, the information contained in or provided in connection with it, any errors or omissions from it however caused, lack of accuracy, completeness, currency or reliability or you or any other person placing any reliance on this presentation, its accuracy, completeness, currency or reliability. This presentation is not a prospectus, disclosure document or other offering document under Australian law or under any other law. It is provided for information purposes and is not an invitation nor offer of shares or recommendation for subscription, purchase or sale in any jurisdiction. This presentation does not purport to contain all the information that a prospective investor may require in connection with any potential investment in the Company. Each recipient must make its own independent assessment of the Company before acquiring any shares in the Company (Shares). The Company has made reference to historic drilling and exploration results from a variety of Exploration companies over the past 30 years that had previously explored the Project.

Forward Looking Information

This presentation contains forward-looking statements. Wherever possible, words such as "intends", "expects", "scheduled", "estimates", "anticipates", "believes", and similar expressions or statements that certain actions, events or results "may", "could", "would", "might" or "will" be taken, occur or be achieved, have been used to identify these forward-looking statements. Although the forward-looking statements contained in this release reflect management's current beliefs based upon information currently available to management and based upon what management believes to be reasonable assumptions, the Company cannot be certain that actual results will be consistent with these forward-looking statements. A number of factors could cause events and achievements to differ materially from the results expressed or implied in the forward-looking statements. These factors should be considered carefully and prospective investors should not place undue reliance on the forward-looking statements. Forward-looking statements necessarily involve significant known and unknown risks, assumptions and uncertainties that may cause the Company's actual results, events, prospects and opportunities to differ materially from those expressed or implied by such forward-looking statements. Although the Company has attempted to identify important risks and factors that could cause actual actions, events or results to differ materially from those described in forward-looking statements, there may be other factors and risks that cause actions, events or results not to be anticipated, estimated or intended, including those risk factors discussed in the Company's public filings. There can be no assurance that the forward-looking statements will prove to be accurate, as actual results and future events could differ materially from those anticipated in such statements. Accordingly, prospective investors should not place undue reliance on forward-looking statements. Any forward-looking statements are made as of the date of this presentation, and the Company assumes no obligation to update or revise them to reflect new events or circumstances, unless otherwise required by law. This presentation may contain certain forward looking statements and projections regarding:

- estimated, resources and reserves;
- planned production and operating costs profiles;
- planned capital requirements; and
- planned strategies and corporate objectives.

Such forward looking statements/projections are estimates for discussion purposes only and should not be relied upon. They are not guarantees of future performance and involve known and unknown risks, uncertainties and other factors many of which are beyond the control of the Company. The forward looking statements/projections are inherently uncertain and may therefore differ materially from results ultimately achieved. The Company does not make any representations and provides no warranties concerning the accuracy of the projections, and disclaims any obligation to update or revise any forward looking statements/projects based on new information, future events or otherwise except to the extent required by applicable laws.

Competent Persons' Statements

The information in this report that relates to Exploration Results and Exploration Targets is based on information compiled by Mr Shane Hibbird who is a member of the AusIMM, Australian Institute of Geoscientists (AIG) and the Society of Exploration Geologists (SEG). Mr Hibbird has sufficient experience relevant to the styles of mineralisation and type of deposit under consideration and to the activity which they are undertaking to qualify as a Competent Person, as defined in the 2012 Edition of the "Australasian Code for Reporting of Exploration Results, Mineral Resources and Ore Reserves". Mr Hibbird is a full-time employee of Draig Resources and has consented to the inclusion of the matters in this report based on his information in the form and context in which it appears. Mr Hibbird currently holds no interest in the securities of Draig Resources Ltd. This information was in accordance with the JORC Code 2012 and was initially reported to the market on 22 August 2016. The information has not materially changed since it was first reported.

The Historic Bellevue Gold Mine

A forgotten treasure

- Historic Bellevue Gold Mine was one of Australia's highest grade gold mines producing around 800,000oz @ 15g/t gold
- Closed & forgotten for 20 years the Project has not benefited from modern exploration and development advances
- Draig will be the first company to apply modern techniques to advance the Project
- Multiple high priority targets for testing include:
 - High grade extension of the historic Bellevue underground mine
 - Potential high grade offset mineralisation
 - Targeting unexplored areas along strike and under lake cover typical in Western Australia
 - Evaluation of the tailings potential from the historic high grade mine
- Exploration commencing & ongoing news flow through 2017

A unique opportunity to revisit & unlock the potential of one of Australia's historic great high grade gold mines

Corporate summary

Building strong foundations

Capital Structure & Cash Position

ASX Code	DRG
Shares	258.5M
Options unlisted (prices \$0.035-\$0.075)	48.3M
Current Share Price ¹	A\$0.029
Market Capitalisation	A\$7.5M
Top 20 Shareholders	60%
Current Cash	A\$2.0M

Board of Directors

Chairman	Mr Ray Shorrocks
Executive Director	Mr Steve Parsons
Non-Exec Director	Mr Guy Robertson
Company Secretary	Ms Oonagh Malone

A Fresh Start

Last 5 year share price

For personal use only



Footnotes:

1. Share price as at 8/5/17
2. As per ASX quarterly report 28/4/17

Excellent Location

In amongst the major mining districts of Western Australia

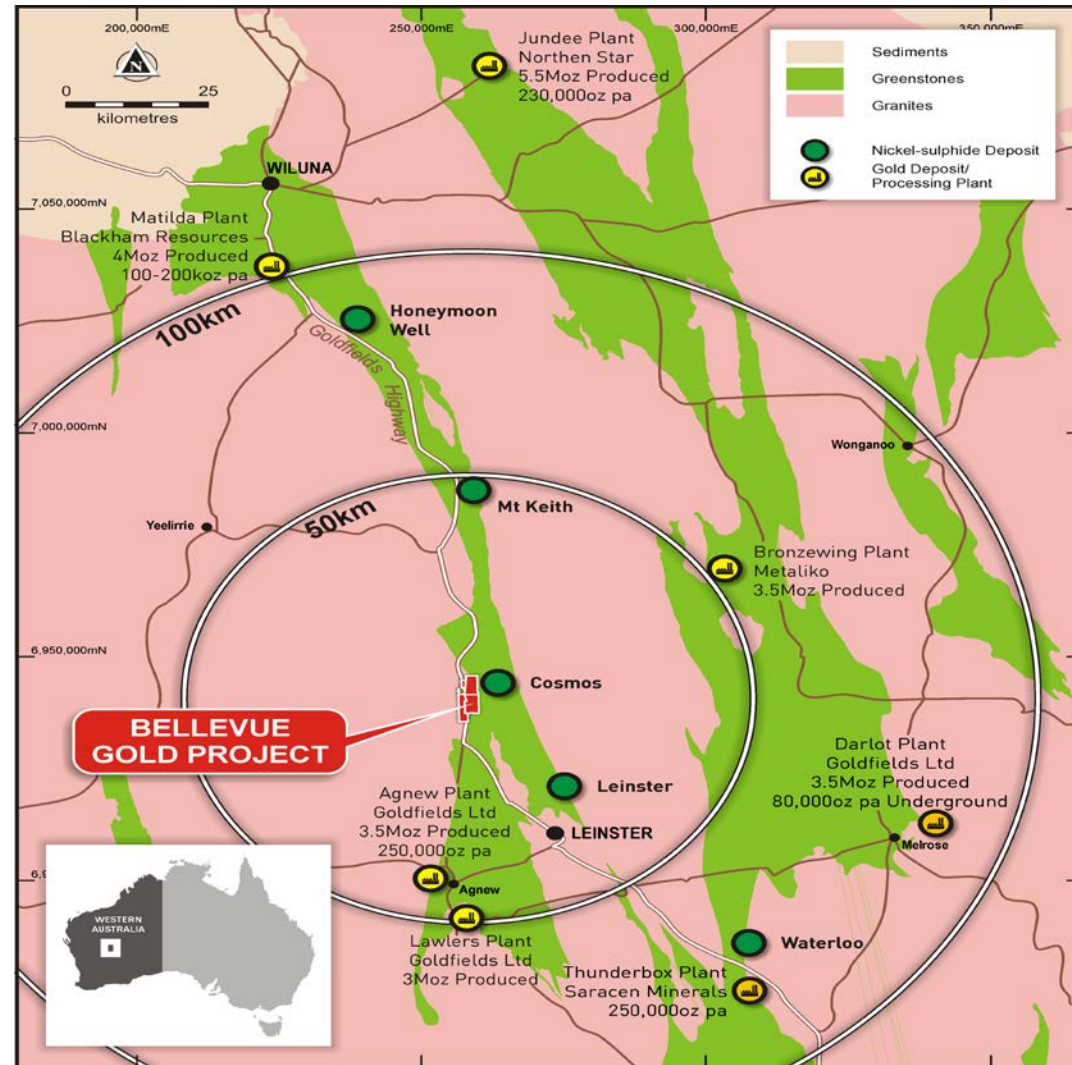
- Bellevue Gold Project (Draig 100%) is an historic high grade gold mine with granted mining licenses
- Western Australia is a top global mining jurisdiction
- Excellent infrastructure
 - Grid power
 - Flights to Leinster (40km)
 - Sealed roads
 - Water
 - Services at Leinster, Leonora & Wiluna
- Close proximity to multiple gold operations



A Major Gold & Nickel District

Located on a world class gold & nickel belt adjacent to numerous gold processing plants

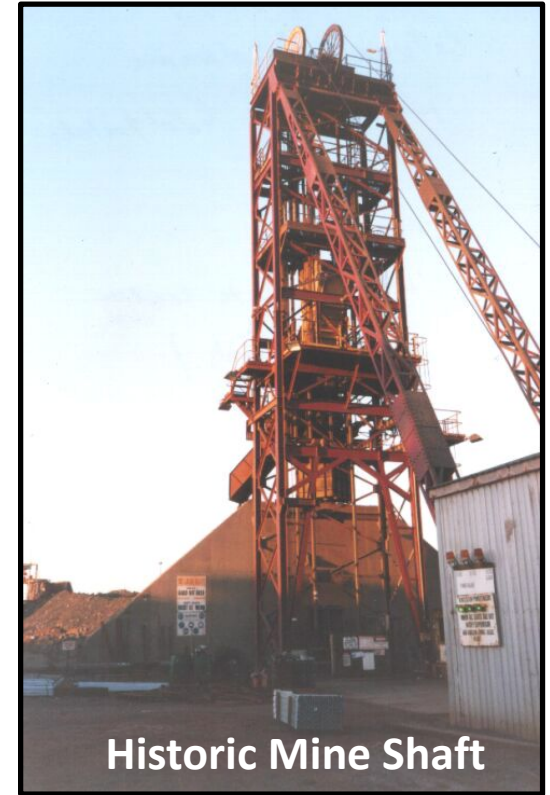
- Located in the prolific Wiluna-Norseman gold belt
- Major producing gold mines within 100km of the Bellevue Gold Project:
 - Darlot (Goldfields)
 - Agnew (Goldfields)
 - Lawlers (Goldfields)
 - Jundee (Northern Star)
 - Matilda (Blackham)
 - Thunderbox (Saracen)
- World class nickel mines in close proximity:
 - Leinster Nickel (BHP)
 - Mt Keith Nickel (BHP)
 - Honeymoon Well Nickel (Norilsk)
 - Cosmos Nickel (WSA)
- Bellevue Gold Project is one of the last areas on the Wiluna belt to be systematically explored in recent times



Historic Bellevue Gold Mine

Grade is King

- Historic Production of around 800,000oz @ 15g/t gold
- A century of high grade gold - discovered in 1897 & closed in 1997-98
- Multiple owners since the mine closed
 - various other company priorities at the time
 - nearby nickel & other discoveries became the focus
- The Project has been “parked” for the last 20 years missing major advances in exploration techniques and the resurgence in gold price in recent times



Historic Mine Shaft



The last time the mine operated

Consistent High Grade Gold Mineralisation

Schematic long section through the historic Bellevue underground mine

- Very high grade lode mined underground to 450m below surface

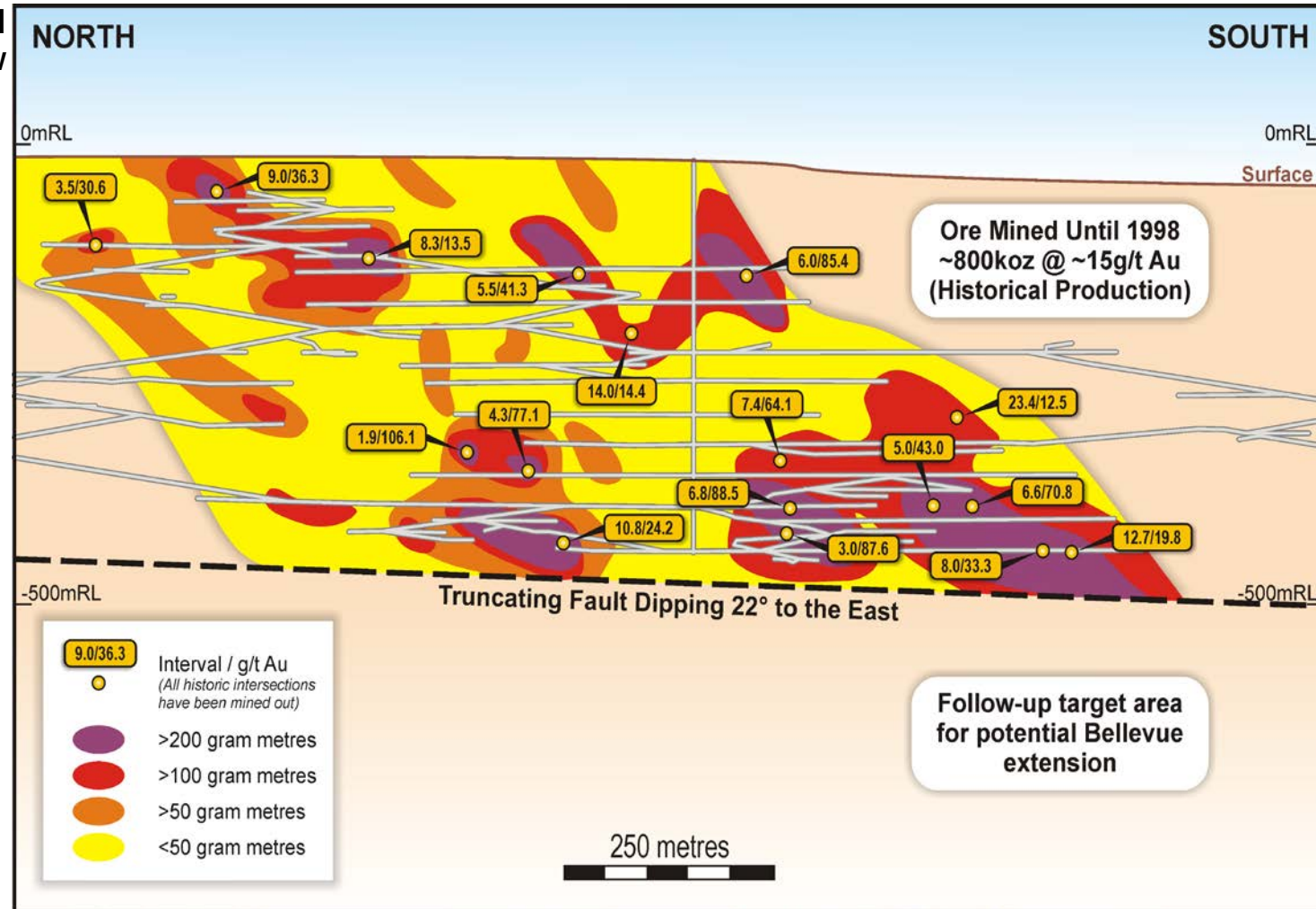
- Offsetting fault at 450m

- Draig is targeting mineralisation from:

- Offset
- Extension &
- Repeat lodes

High grade historical drill intercepts include:

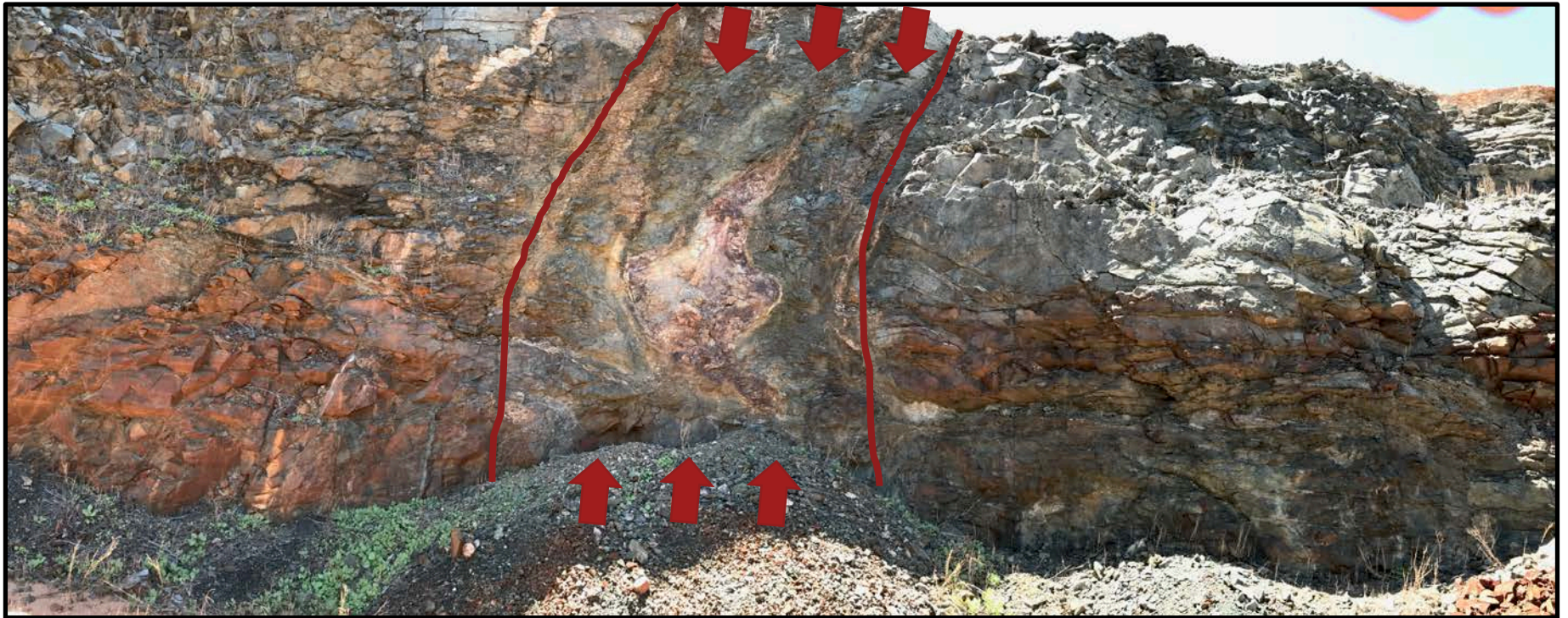
- 6.6m @ 70.8g/t gold
- 7.4m @ 64.1g/t gold
- 6.0m @ 85.4g/t gold
- 6.8m @ 88.5g/t gold
- 4.3m @ 77.1g/t gold
- 3.0m @ 87.6g/t gold
- 1.9m @ 106.1g/t gold



Bellevue High Grade Gold Lode

Bellevue gold lode outcropping in the open pit

High grade Bellevue gold lode
historically producing around 800,000 @ 15g/t gold



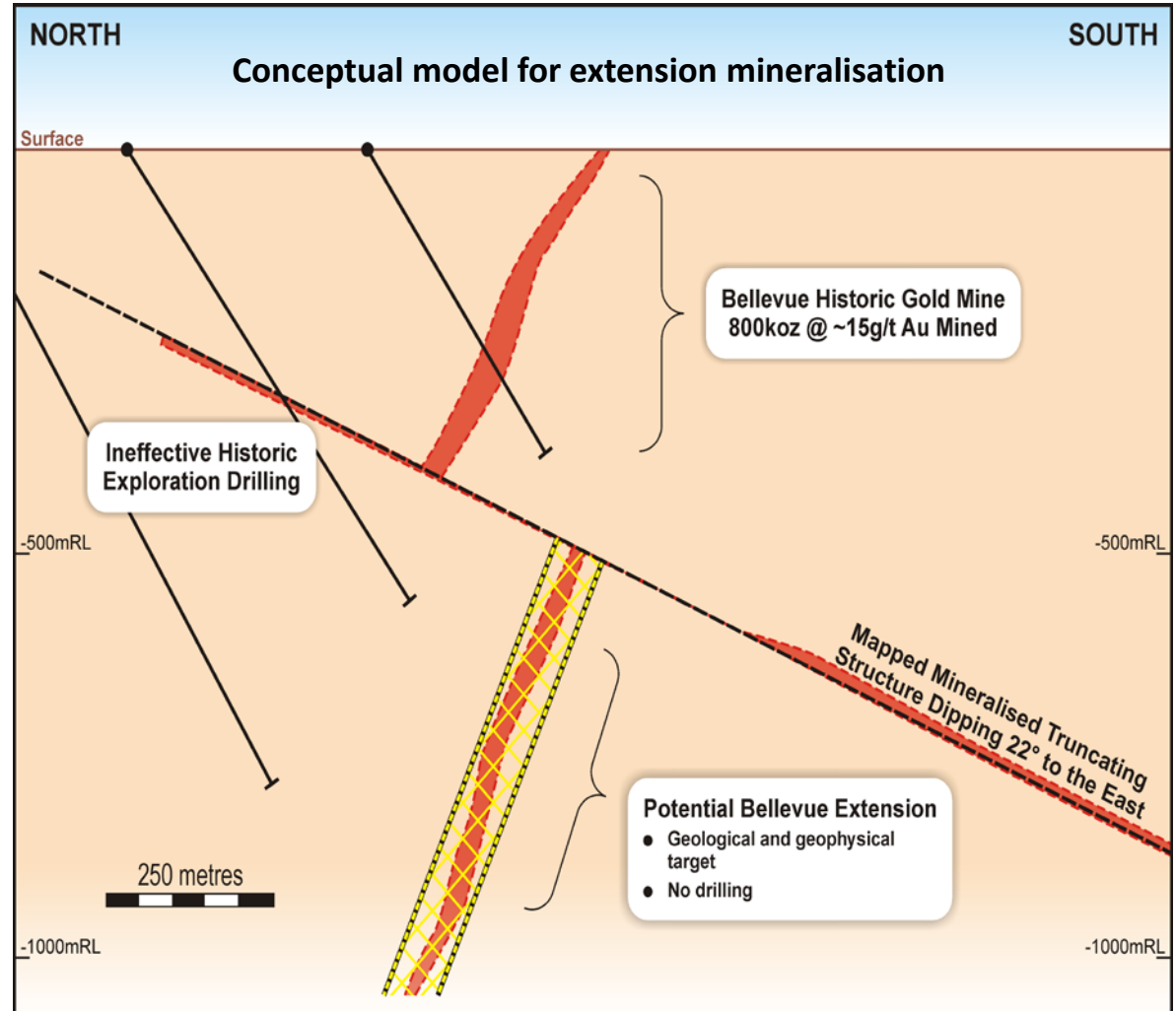
3 metres

Targeting the major prize

Offset and extension targeting currently being refined ready for drill testing

For personal use only

- Bellevue high grade gold lode is truncated by an offsetting fault at 450 metres vertical depth
- Previous studies indicate offset and extensions of the high grade lode are highly likely
- The offsetting fault is interpreted to be part of the mineralising fault system and is also prospective for gold mineralisation
- Draig has commenced geological & structural studies to refine the upcoming drill targeting programmes



Multiple high priority drill targets

Granted Mining Licenses ready for work programmes

- Highly prospective geological belt

- 70% of Project has had surprisingly little exploration due to shallow cover and salt lakes

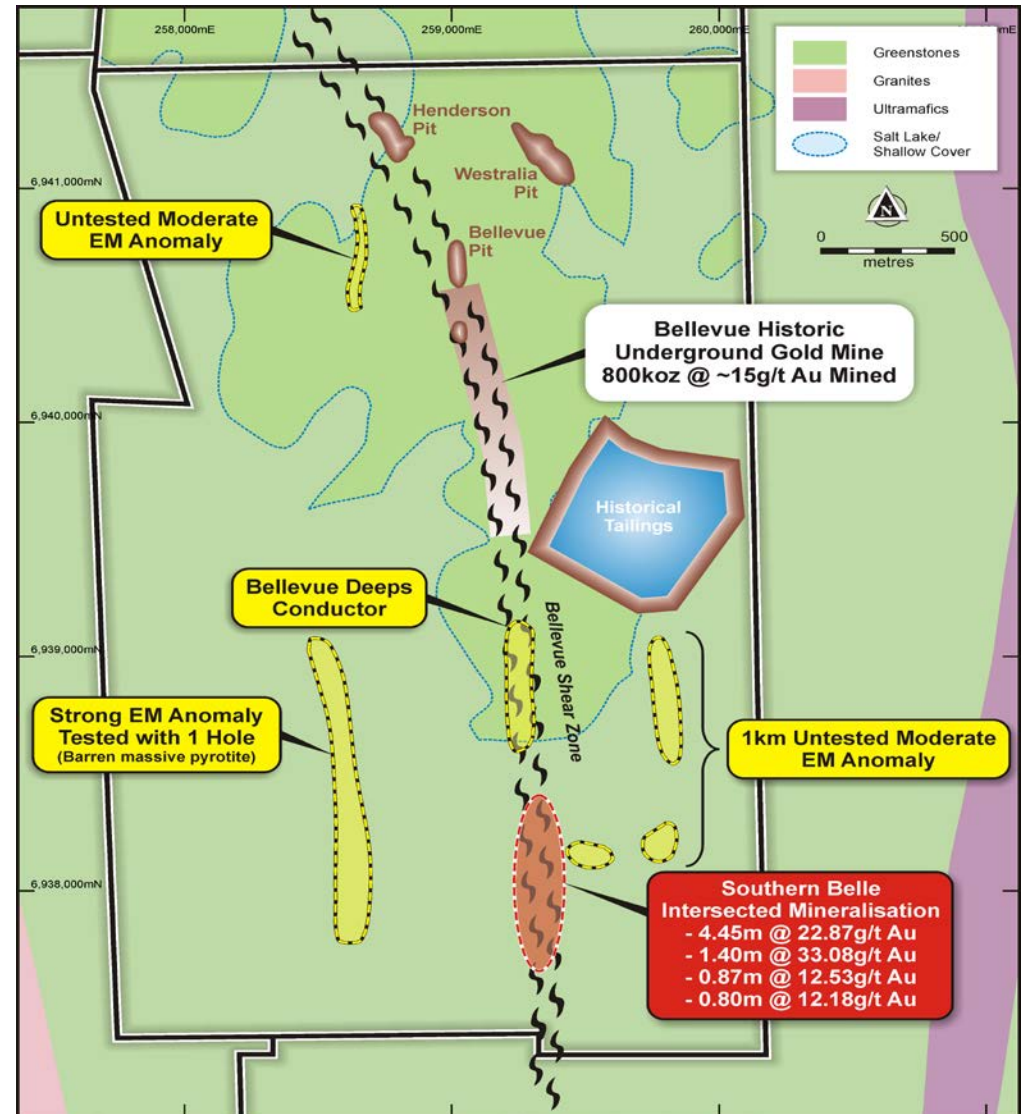
- Initial drill targeting for high grade gold includes:

- Historic tailings
- Bellevue open pits - remnant mineralisation
- Bellevue UG - remnant mineralisation
- Bellevue shear zone along strike
- Southern Belle mineralisation

- Geophysical review and targeting

- Bellevue lode abundant pyrrhotite & pyrite
- Numerous historical Electro-magnetic targets

- Geological & structural review for targeting Bellevue lode extension & offset

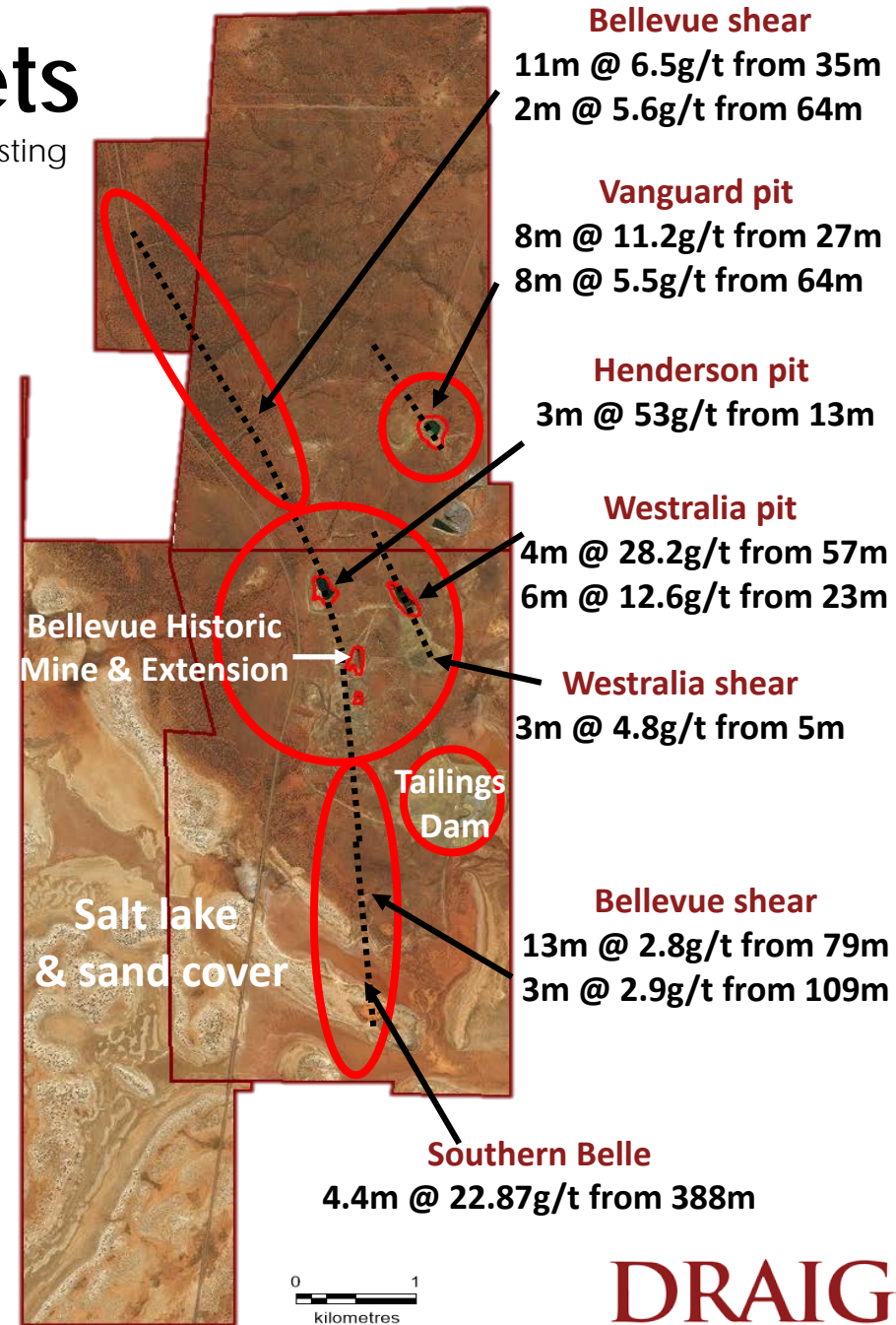


Multiple step out targets

A highly prospective landholding ready for modern exploration testing

For personal use only

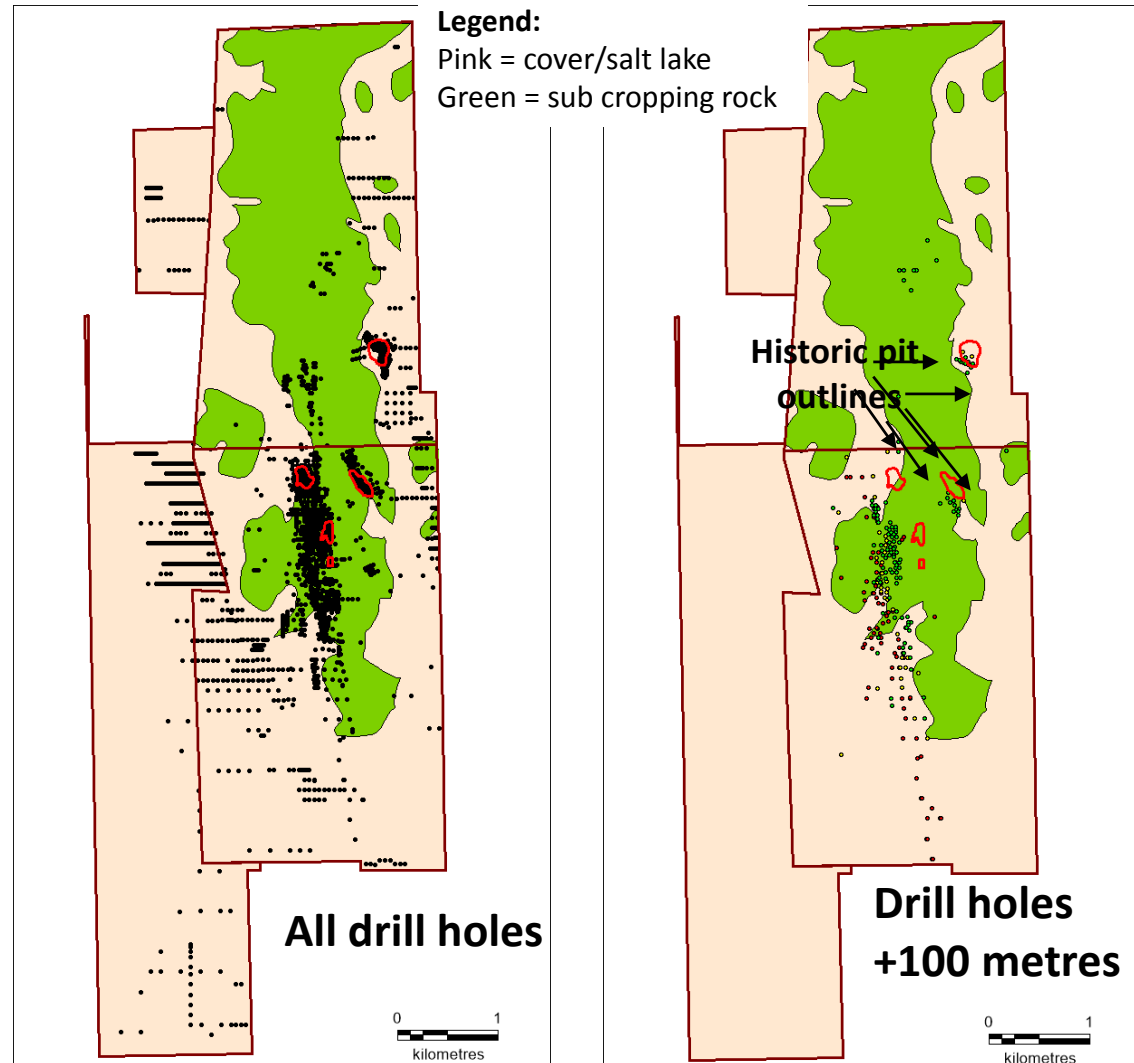
- Bellevue near mine targets include:
 - Extension and offset of historic high grade lode
 - Southern Belle high grade zone
 - Tailings dam
 - Remnant shallow & underground mine mineralisation
 - Historic untested electro-magnetic targets
- Project scale high priority targeting includes:
 - Strike extensions to Bellevue shear zone
 - Parallel shear zones with limited historical drill testing
 - Regional electro-magnetic targeting (Bellevue style & nickel potential)
 - 70% of Project has had limited exploration due to shallow cover & salt lakes
 - Other commodity reviews including Lithium bearing pegmatites announced on nearby licenses
 - Follow up of historic base metal drill intercepts including 2.3% Cu & 12.8g/t gold in drill hole RC403



Just scratching the surface

Limited historic drilling - much of the Project has been ineffectively drill tested

- Majority of historic drilling is shallow & ineffective
- 90% of historic drilling is shallow & less than 100 metres vertical depth
- 70% of Project has had limited exploration due to the shallow cover & salt lakes
- Last historic drill testing was just one hole drilled in 2003
- Draig Resources will be the first company in nearly 20 years to explore the Project using the latest generation of modern exploration techniques



Unlocking the potential at Bellevue

Ongoing news flow in 2017 with targeted exploration

For personal use only

Qtr 2 2017

Structural & geological targeting reviews underway.

Geophysical reviews and programme design.

Tailings Dam drill testing.

Qtr 3 2017

Geophysical targeting surface & downhole.

Initial drill testing at:

- Shallow near mine targets
- Southern Belle
- Geophysical targets
- Tailings dam follow up

Commence engineering studies on remnant underground potential.

Qtr 4 2017

Bellevue underground offset drill testing.

Bellevue underground extension drilling.

Follow up drilling of Qtr 3 results.

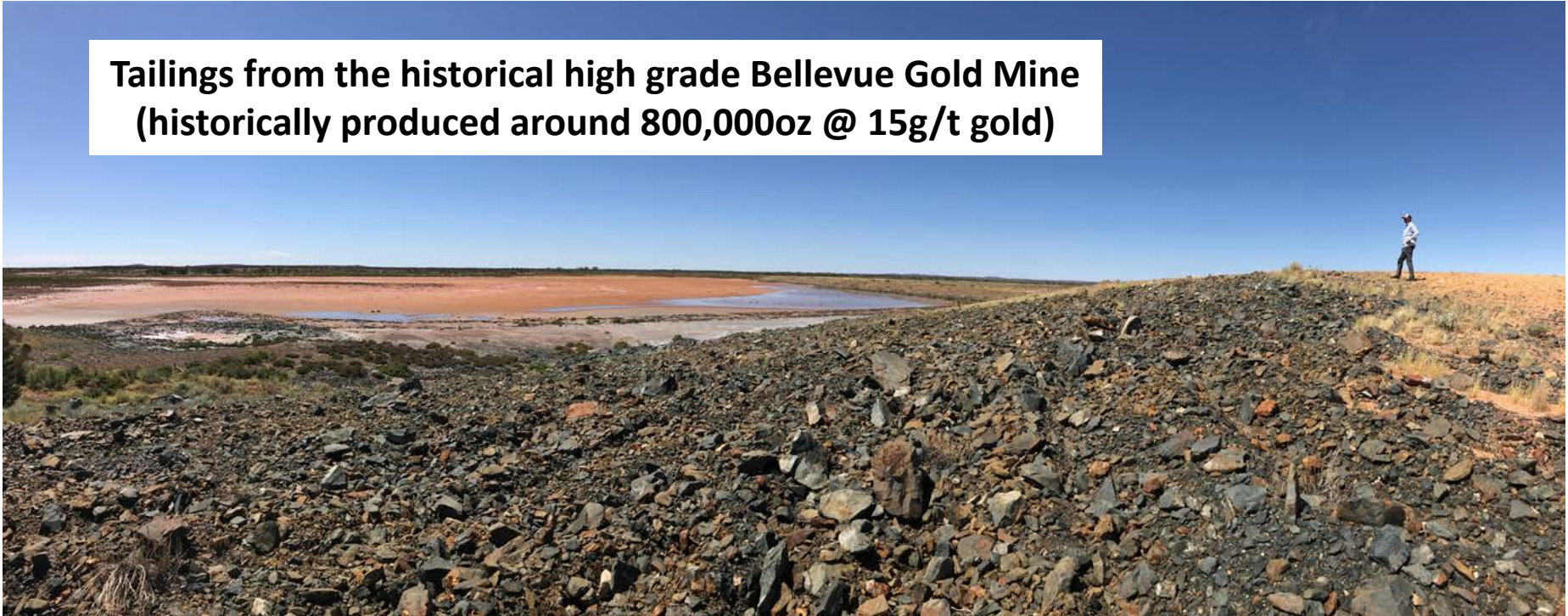
Review engineering studies on remnant underground potential.

Ongoing news flow 2017

Testing Historical Tailings

Immediate work program testing tailings from the high grade mine

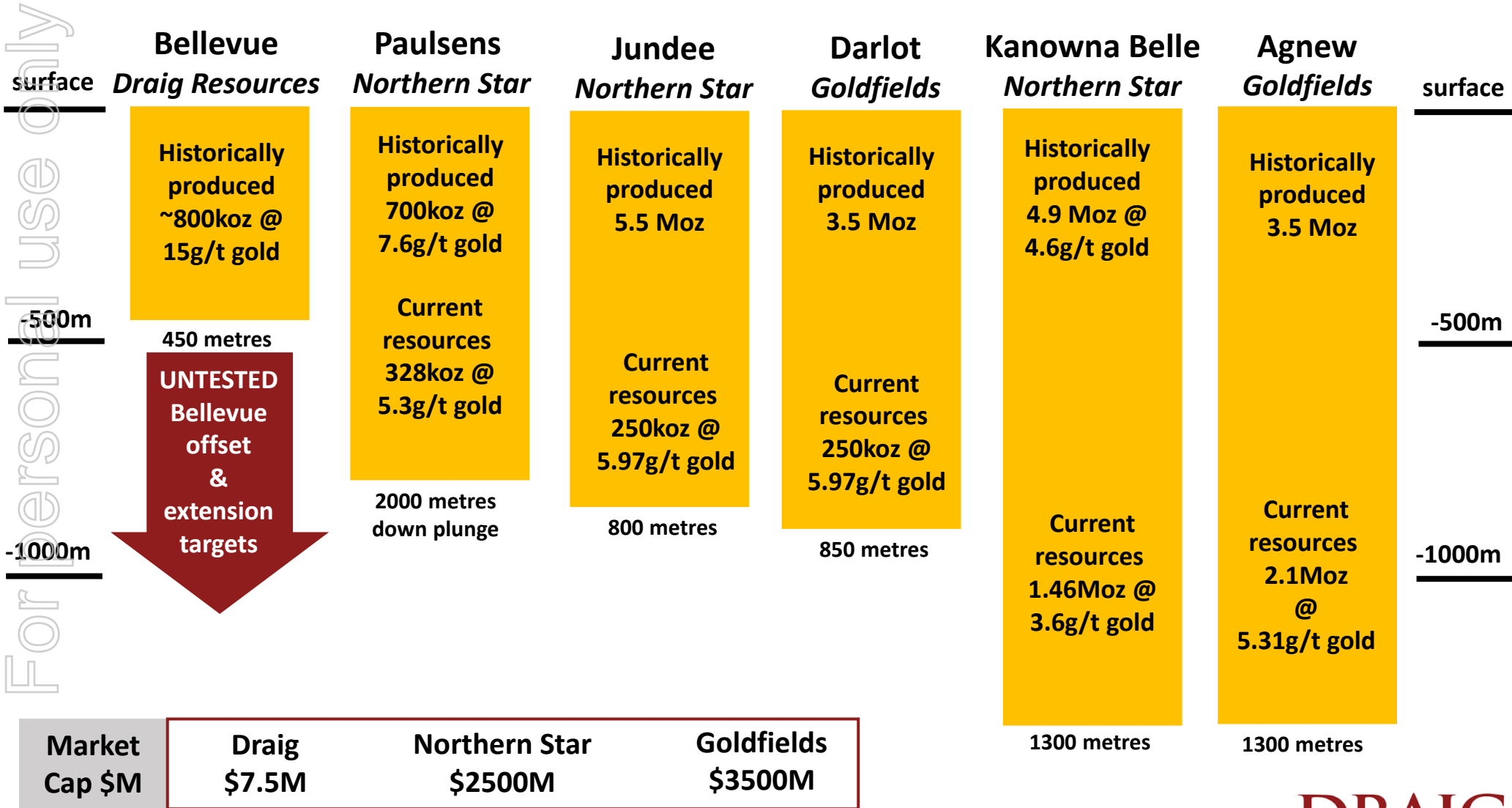
**Tailings from the historical high grade Bellevue Gold Mine
(historically produced around 800,000oz @ 15g/t gold)**



Phase 1 Exploration: Drill test & analysing the tailings dam for potential high grade gold in the historic tailings - commencing this quarter

A lot further to go

High Grade underground mining operations in Western Australia continue to mine deeper



Ready to go.....

Bellevue Gold Project has been a forgotten treasure

- One of Australia's highest grade gold mines ~ 800,000oz @ 15g/t gold
- Unloved for 20 years, the Project has not benefited from modern exploration and development advances
- Draig will be the first company to apply modern techniques to advance the Project
- Multiple high priority targets for testing throughout 2017
- First drill programme starting in coming weeks followed by ongoing exploration drilling news flow
- A highly experienced management & exploration team with recent discovery success

Draig Resources offers a unique opportunity by revisiting & unlocking the potential of one of Australia's historic great high grade gold mines

DRAIG

RESOURCES LIMITED

Thank you

RIU Conference Sydney
May 2017