



Argentina's next Lithium Company

Drilling Update Presentation
February 2017

Disclaimer

This presentation and any oral presentation accompanying it has been prepared by Latin Resources Ltd (“LRS “ or the “Company”). It should not be considered as an offer or invitation to subscribe for or purchase any securities in the Company or as an inducement to make an offer or invitation with respect to those securities. No agreement to subscribe for securities in the Company will be entered into on the basis of this presentation.

This presentation contains forecasts and forward looking information. Such forecasts, projections and information are not a guarantee of future performance, involve unknown risks and uncertainties. Actual results and developments will almost certainly differ materially from those expressed or implied. LRS has not audited or investigated the accuracy or completeness of the information, statements and opinions contained in this presentation. Accordingly, to the maximum extent permitted by applicable laws, LRS makes no representation and can give no assurance, guarantee or warranty, express or implied, as to, and take no responsibility and assume no liability for, the authenticity, validity, accuracy, suitability or completeness of, or any errors in or omission, from any information, statement or opinion contained in this presentation.

You should not act or refrain from acting in reliance on this presentation material. This overview of LRS does not purport to be all inclusive or to contain all information which its recipients may require in order to make an informed assessment of the Company’s prospects. You should conduct your own investigation and perform your own analysis in order to satisfy yourself as to the accuracy and completeness of the information, statements and opinions contained in this presentation before making any investment decision.

Corporate Overview

Latin Resources Limited (ASX Code: LRS)



Mineral exploration and development company with Copper projects in Peru and lithium projects in Argentina with proven record of developing projects



Over 8 years of exploration work and \$20m spent to date in South America



Track record of identifying and developing projects with quality Joint Venture partners



Major Joint Venture in progress with First Quantum in Peru on copper project



Over 100,000 hectares of secured lithium pegmatite concessions in Argentina with drilling to commence



Strong Management team

Management Team

Managing Director – Chris Gale

Chris has extensive experience in senior management roles in both the public and private sectors. He has also held various board and executive roles at a number of mining and technology companies throughout his career. Chris is the current Chairman of the Council on Australian Latin American Relations (COALAR) established by the Australian Government Department of Foreign Affairs and Trade (DFAT). He is also a founding director of Allegra Capital, a boutique corporate advisory firm based in Perth and is a member of the Australian Institute of Company Directors (AICD).

Exploration and Development Manager – Kerry Griffin - Bsc (Geol), Dip Eng Geol, MAIG.

Kerry has 21 years professional experience in mining geology, resource development and exploration in Australia, Africa, South America and Asia including senior roles with companies such as Newcrest Mining, Sons of Gwalia, Consolidated Minerals, Ivanhoe Mines, Aspire Mining Limited, Haranga Resources Limited, Lindian Resources Limited and Altan Rio Ltd. Recent experience includes five years with Ivanhoe Mines as the Senior Development Geologist during the discovery and development of the world class Oyu Tolgoi Project in Mongolia. Kerry was Chief Geologist for two years at the Wodgina pegmatite hosted tantalum mine and recently managed a large scale Ta/Sn Greenfields pegmatite exploration project in Mashonaland, NE Zimbabwe.

Process and Chemical Engineer – Vijay Mehta

45+ years of R&D and Manufacturing experience in the field of Ore and Brine based technology for recovery of Lithium, Potash, Magnesium and Boron to produce commercial scale high purity chemical products. Extensive knowledge of Lithium Resources (Brines and Ores) and their chemistry. Visited all Lithium resources sites around the world. Extensive knowledge of Lithium process technologies for the recovery of Lithium into high purity Li_2CO_3 , LiOH and more than 20 other Lithium products (Inorganic -Organometallic). Vijay has more than 12 US patents, +50 Technology reports and +10 publications.

Hard Rock Lithium Potential in Pegmatites and Precambrian Metamorphic Belts in Argentina



For personal use only

Lithium Province of NW Argentina

El mapa minero



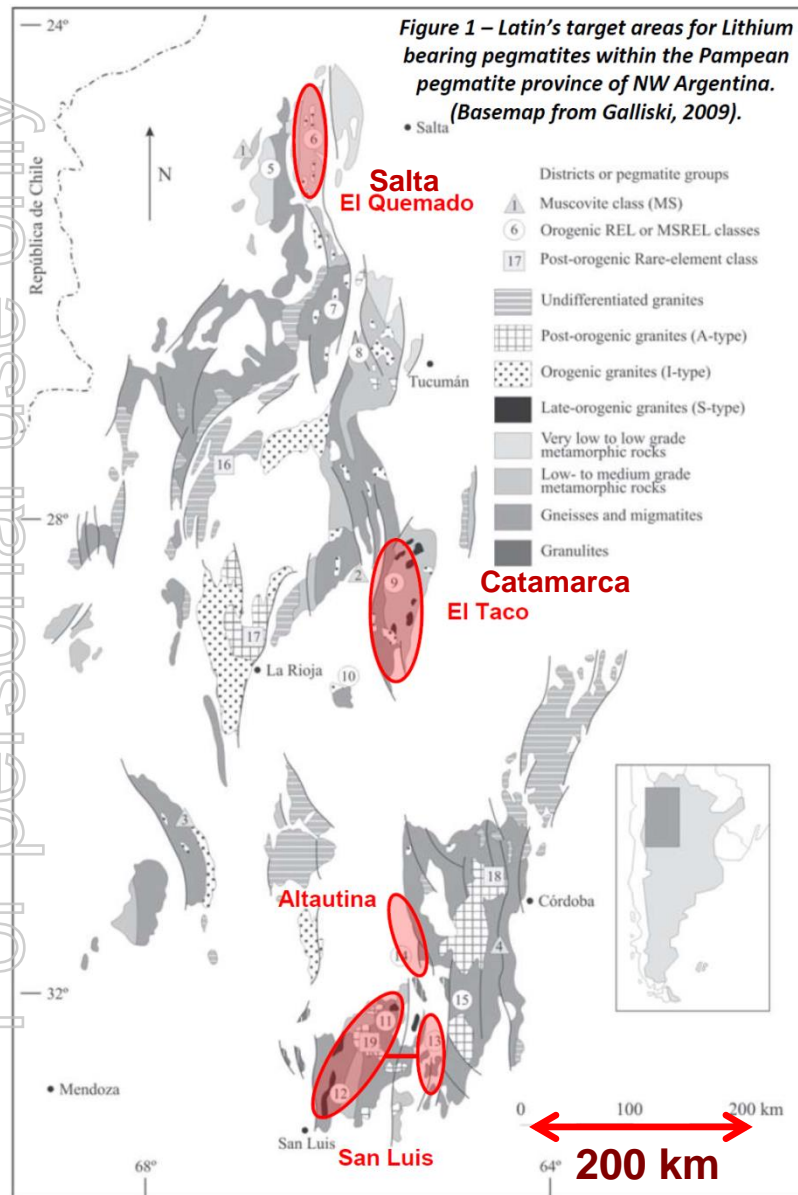
Two-thirds of the world's lithium reserves are found in Argentina, Chile and Bolivia in what is known as the Lithium Triangle'.

- **Major lithium players in the district of Salta and Catamarca:**
 - **FMC**
 - **Galaxy Resources**
 - **Lithium Americas**
 - **SQM**
- **The Pampean pegmatite province in NW Argentina hosts numerous Lithium bearing pegmatite deposits (Spodumene, Lepidolite, Petalite, Amblygonite, Lithiophilite), with added potential for Tantalum, Rare Earth Elements, Beryllium and Tin. (cassiterite)**
- **Exploration and development of Lithium resources in Argentina overwhelmingly focused on salt lakes and presents an “under the radar” opportunity for hard rock discoveries, with bonus accessory minerals.**

Lithium Pegmatite Province of NW Argentina



LATIN RESOURCES
Limited



- ***Latin Resources has secured mineral rights over two key districts with documented Lithium pegmatites occurrences – Catamarca and San Luis***
- ***Latin Resources also holds a option of the Ansotana Lithium – Tantalum project in Salta***
- ***With these 3 projects Latin Resources controls concessions with over 100,000 hectares of lithium bearing pegmatites – the largest lithium hard rock holding in Argentina***

LRS - Lithium Pegmatite Concessions

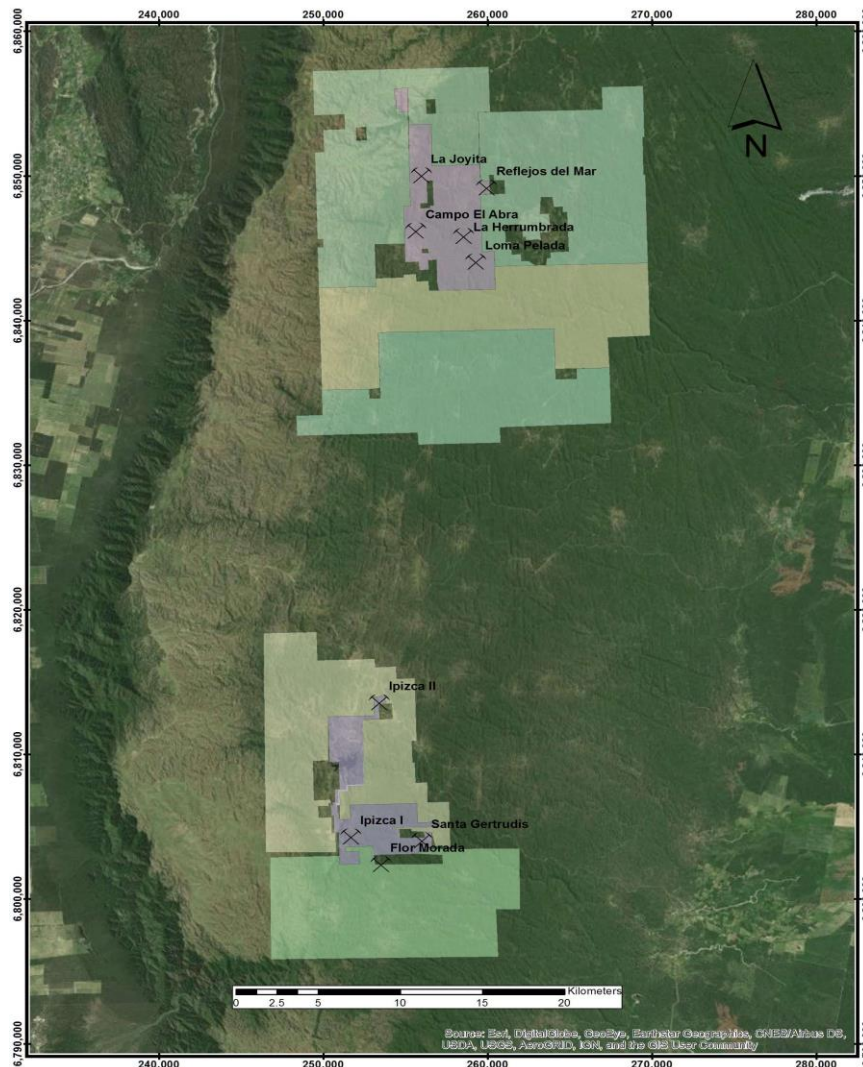
Catamarca, Argentina

- Latin has had granted exploration tenements over 70,000 hectares in two areas, Vilisman and Ancasti, each with past Lithium mining activity and that together host in excess of twenty Lithium bearing pegmatite deposits documented by various authors in publications made over the last 50 years.
- These Lithium bearing pegmatite deposits have a history of small scale production, having been intermittently exploited for Lithium minerals, and associated Beryl, Tantalum and feldspars during the 1950's and 1970's.
- Analysis of twenty nine new samples collected by Latin Resources geologists of exposures of pegmatites in old mine workings in seven pegmatite deposits within the claim applications reported grades of up to 4.46 Li₂O
- Ancasti Lithium Project reverse circulation drilling program has commenced
- Approximately 3,000m to be drilled over the next 3 weeks
- First assay results expected in February

**Cautionary Statement: These data are published historical foreign estimates not reported in accordance with the JORC Code. A competent person has not done sufficient work to verify the data in accordance with the JORC code and it is uncertain that following evaluation and/or further exploration work that these foreign estimates will be able to be reported in accordance with the JORC Code.*

Catamarca Lithium Concessions

For personal use only



- 77,000 Hectares – large landholding
- Location of the Vilisman and Ancasti Lithium Pegmatite Groups, with old mines marked .
- Targeting initially drilling four of the nine prospects
- The program aims to test the depth continuity and lithium content of the pegmatites
- The initial four targets are Ipizca II, Reflecto De Mar, Campo el Abra and Santa Gertrudis.

Projects – *Catamarca* -Drilling commenced

For personal use only

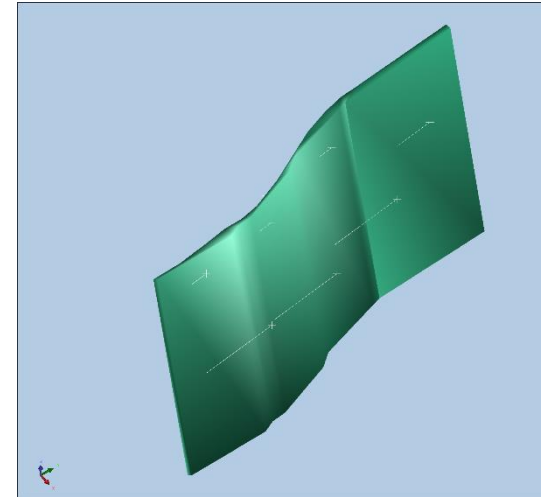
- Mapping and sampling carried out at nine prospects in Ancasti and Villisman areas
- 29 samples taken and prospect ranking completed
- Analysis of twenty nine new samples collected by Latin Resources geologists of exposures of pegmatites in old mine workings in seven pegmatite deposits within the claim applications reported grades of up to 4.46 Li₂O
- Four prospects to be drilled with >28 RC holes for approximately 3,000m
- Initial Assay results to be released in February



Projects – Catamarca

Drill Targets – Ipizca II

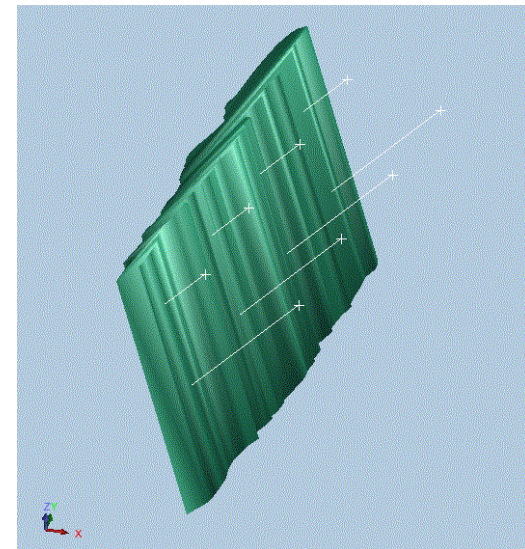
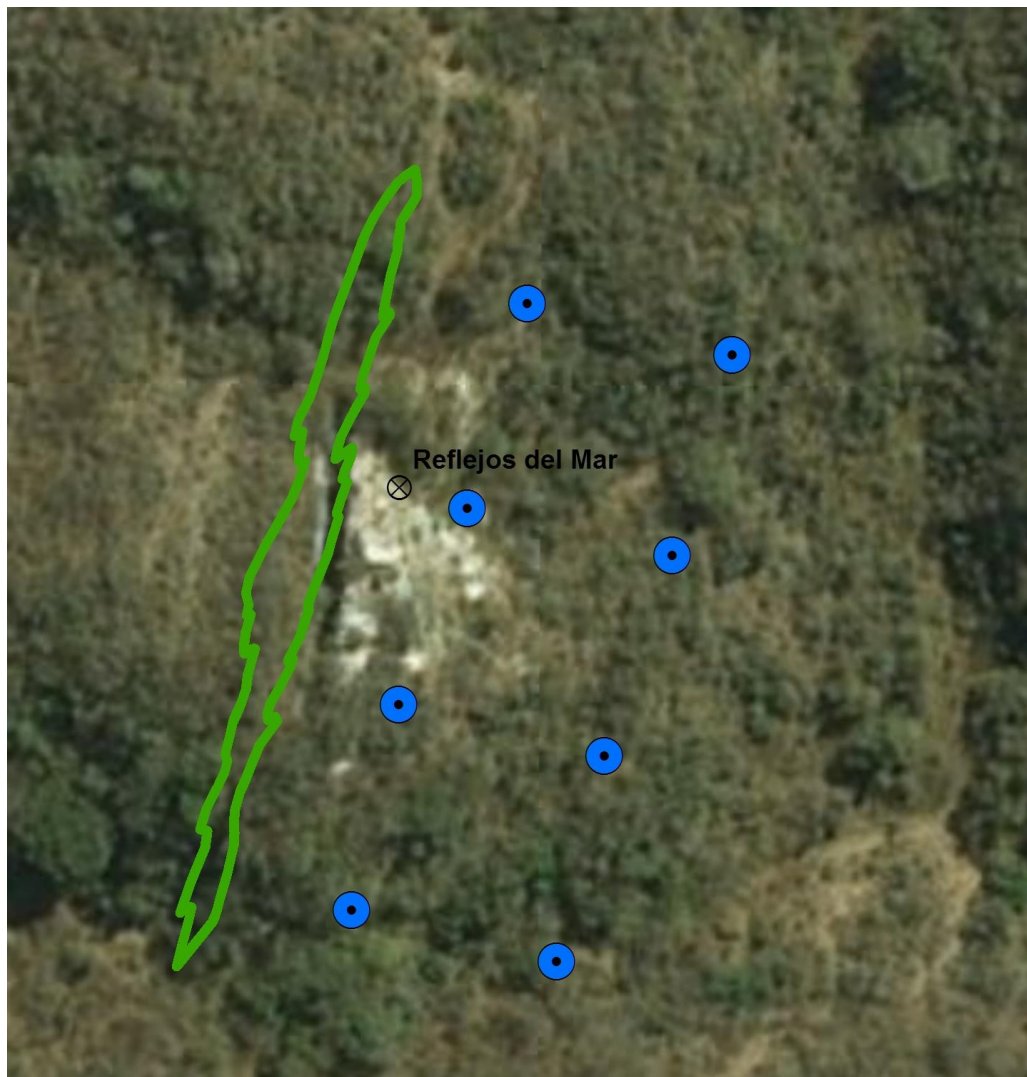
For personal use only



Projects – Catamarca

Drill Targets – Reflejo del Mar

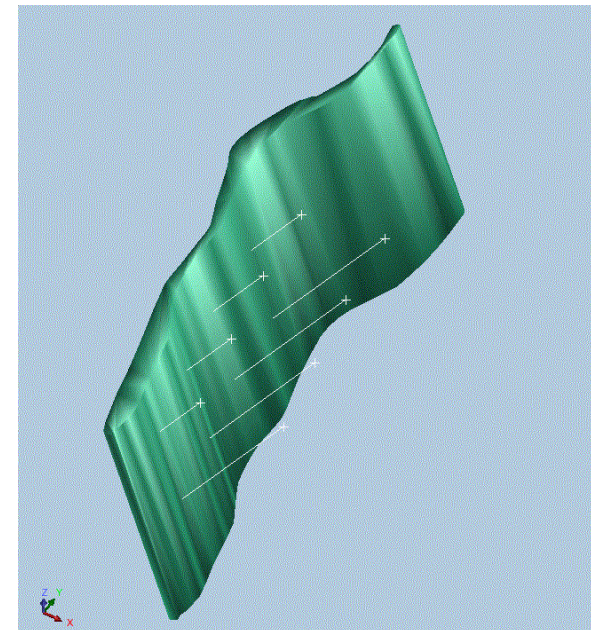
For personal use only



Projects – Catamarca

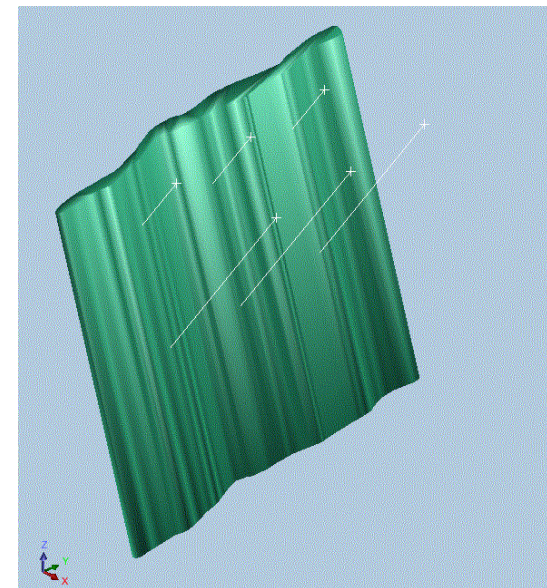
Drill Targets – Campo El Abra

For personal use only



Projects – Catamarca

Drill Targets – Santa Gertrudis

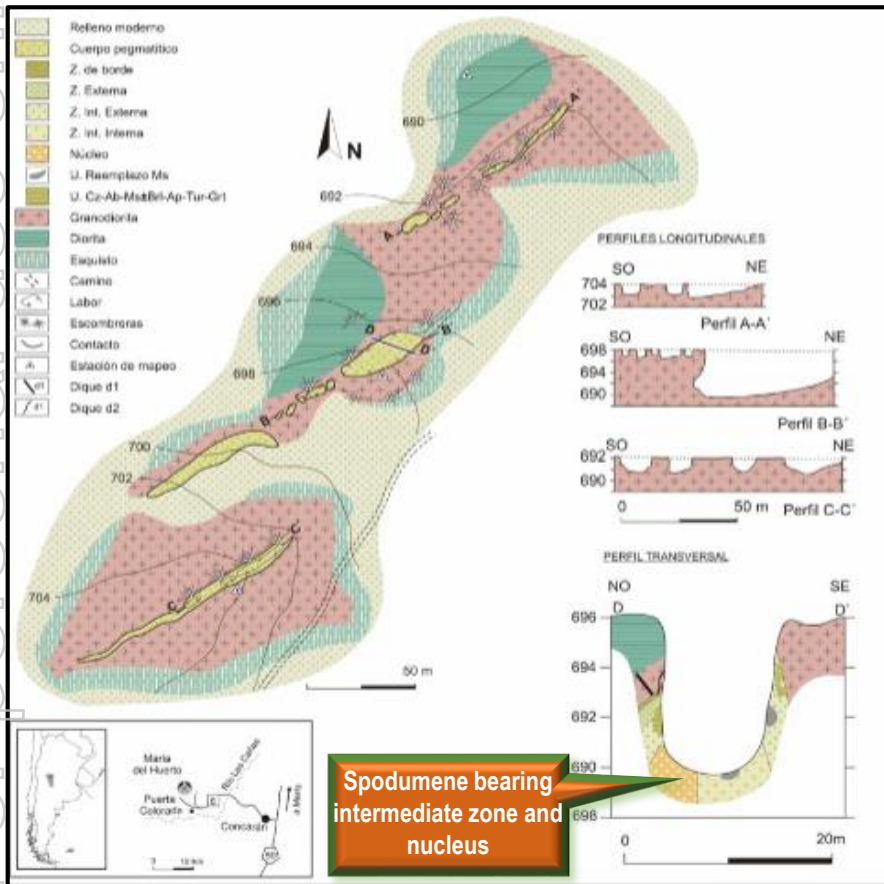


LATIN CLAIMS NEW LITHIUM CONCESSION IN SAN LUIS, ARGENTINA.

- Claim applications over 24,769 hectares in six exploration concessions and one vacant Lithium mining concession within the Conlara and Estanzuela pegmatite fields have been lodged at the mining authority in the San Luis Province, Central Argentina.
- The six exploration concessions each surround pegmatites dykes known to have been mined in the past for Lithium minerals (as spodumene or lepidolite) and/or other related minerals including quartz, feldspar, beryl, tantalite (tantalum mineral) and colombite (niobium mineral).
- Latin has also claimed the “Maria Del Huerto” mining concession, comprising three parallel dykes where spodumene was mined between 1936 and 1940.
- The main working at “Maria del Huerto” measures 110 m x 15 m and has been excavated to only 10 m depth. Spodumene crystals of up to 1 m in length have been recorded.
- Drilling of “Maria del Huerto” planned to commence in 2nd Quarter 2017.

** Cautionary Statement: These data are published historical foreign estimates not reported in accordance with the JORC Code. A competent person has not done sufficient work to verify the data in accordance with the JORC code and it is uncertain that following evaluation and/or further exploration work that these foreign estimates will be able to be reported in accordance with the JORC Code.*

San Luis Lithium Concessions



- **24,769 Hectares with six exploration concession applications been lodged**
- **A total six exploration concessions have been claimed within the Conlara and Estanzuela pegmatite fields. Each claim surrounds documented lithium bearing pegmatite deposits that have been mined in the past for Lithium bearing minerals (spodumene or lepidolite) and/or other related minerals including quartz, feldspar, albite, beryl, tantalite (tantalum ore) and colombite (niobium ore).**

Geological Mapping of the Maria del Huerto Pegmatite showing the spodumene bearing intermediate zones and nucleus exposed over the entire width of the open pit (Roquet et.al. 2006).

Maria del Huerto concession – San Luis



View to the South Western end of the main pit at Maria Del Huerto.

The “Maria del Huerto” mining concession, is enclosed by the Puerta Colorada exploration claim and was claimed for the Company after being declared vacant by the Provincial mining authority. The Maria Del Huerto deposit was mined between 1936 and 1940 and was one of the first spodumene producers in the San Luis Province to have good grades. (Roquet et.al. 2006).



Examples of pink coloured weathered spodumene in the Maria del Huerto open pit (Intermediate Zone).

LRS SIGNS BINDING TERM SHEET FOR PURCHASE OF ANSOTANA PEGMATITE PROJECT IN SALTA, ARGENTINA

- Latin Resources Limited (ASX:LRS) has entered into a binding Purchase and Earn-In Terms Sheet to acquire up to a 90% interest in several mining concessions which comprise of approximately 44,290 hectares of lithium and tantalum pegmatites in the Province of Salta, Argentina, known as the Ansotana Project (“Ansotana “).
- The Ansotana concession area was mined for Tantalum and Bismuth by the Ansotana Mining Company between 1943 and 1945. The company carried out production on the mineralized pegmatites which material was sold to the USA during World War 2.
- The Ansotana Pegmatites are complex Lithium rich pegmatites and host minerals such as tantalite, beryl and the lithium bearing minerals such as spodumene, Lepidolite and montebrasite (amblygonite).
- This purchase, if successfully completed after due diligence, will advance the continuing strategy of Latin Resources to secure the known hard rock lithium bearing pegmatites in Argentina.



LATIN RESOURCES
Limited

The Geology of the Ansotana Project



Pegmatites showing lepidolite veins, tourmaline and columbite



Lepidolite – lithium mica

The advantage of the Ansotana project is that the concessions are all granted , previous exploration means the project is virtually drill ready once the 60 day due diligence is completed and subject to sufficient evidence of the pegmatites bearing lithium mineralisation.

Objectives & Milestones – News flow 2017

- ✓ Control the majority of the known hard rock lithium bearing pegmatites in Argentina
- ✓ Field work on Catamarca to define drill targets and lodge EIR and drill permits – **Completed**
- ✓ EIA /Drill Permit approved – **Completed**
- ✓ Start drilling on the Catamarca concessions – **February**
- ❑ Submit initial assays on drilling and release results on Catamarca project – **February**
- ❑ Commence field work on San Luis concessions to define drill targets – **February**
- ❑ Commence Due diligence on Ansotana project – **March**
- ❑ Start drilling on the San Luis concessions – **April/May**
- ❑ Drill and define a JORC lithium resource - **2nd Quarter 2017**
- ❑ Commence design work and PFS on the spodumene concentrate plant when JORC resource is completed

Company Metrics

52 week Price Chart

Latin Resources LTD	ASX CODE: LRS
----------------------------	----------------------

Share Price	A\$0.017
Market Cap	A\$26M
52-Week (Low-High)	A\$0.003 - 0.024
30-Day Daily Avg Vol	15M Shares
Shares Outstanding	1,553,398,098
Options* - <i>Expiration:</i> - <i>Exercise Price:</i>	322 Million March 9 ,2017 \$0.02
Fully Diluted	1,875,398,098
Mgmt & Board Share %	10%
Top 50 Shareholders	48%



*As of January 30th , 2017

Peer Lithium Comparative Analysis (January 2017)



LATIN RESOURCES
Limited

For personal use only

ASX Companies
with Resource

Resource
Size

Mkt Cap

Galaxy*
(GXY)

38MT

A\$950M

Pilbara Minerals
(PLS)

128MT

A\$650M

Neo Metals
(NMT)

78MT

A\$217M

Altura Mining
(AJM)

39MT

A\$198M

Kidman Resources
(KDR)

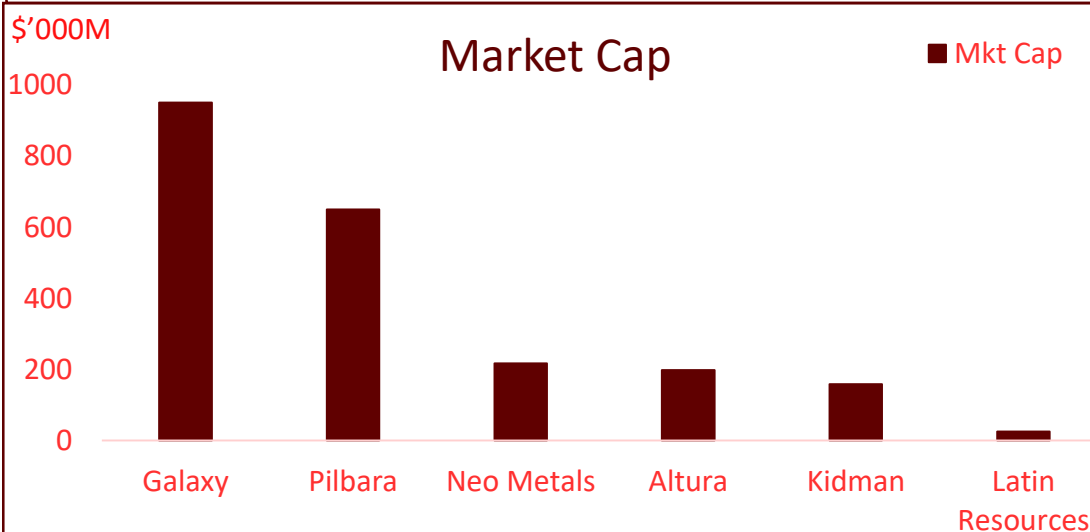
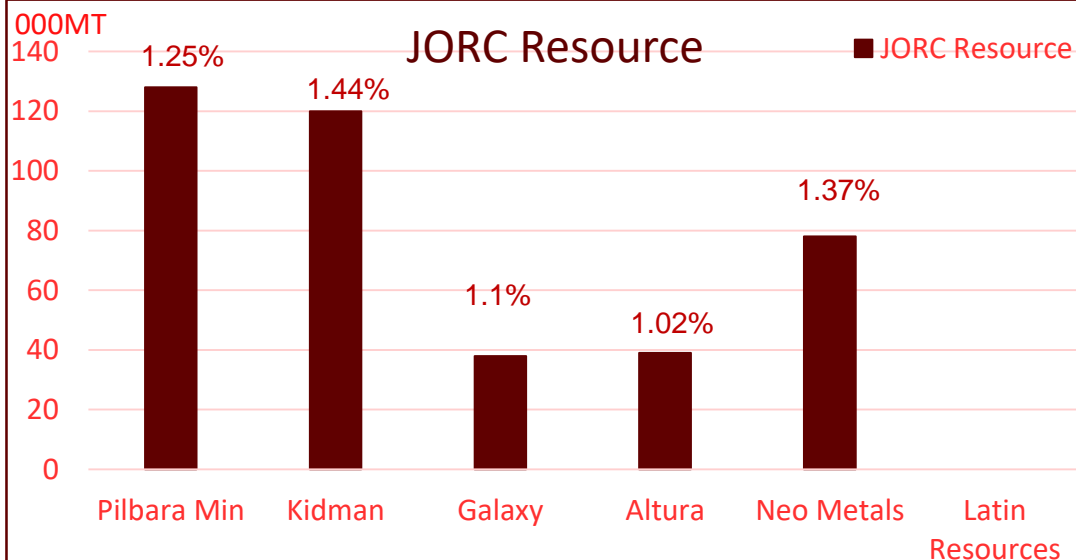
120MT

\$158M

Latin Resources
(LRS)

TBA

A\$25M





LATIN RESOURCES LIMITED

Thank You & Questions

Competent Person Statement

The information in this report that relates to Geological Data and Exploration Results is based on information compiled by Mr Kerry Griffin, who is a Member of the Australian Institute of Geoscientists. Mr Griffin has sufficient experience which is relevant to the style of mineralisation and type of deposit under consideration and to the activity which he is undertaking to qualify as a Competent Person as defined in the 2012 Edition of the 'Australasian Code for Reporting of Exploration Results, Mineral Resources and Ore Reserves'. Mr Griffin is the Exploration and Development Manager of Latin Resources Limited and consents to the inclusion in this report of the matters based on his information, and information presented to him, in the form and context in which it appears.

Historical Foreign Estimates of Mineralisation

The historical foreign estimates of mineralisation are modified from data published in Acosta et al (1988) and Balmaceda & Kaniefsk (1982), both Spanish language publications translated as follows:

Acosta et al (1988): "Goeconomic Study of Pegmatites" and was undertaken by the Provincial Government of Catamarca as part of an agreement between the Department of Mines and the [Argentine] Federal Council of Investment.

Balmaceda & Kaniefsky (1982): "Characterisation of two Spodumene Pegmatites located in Catamarca and San Luis, Argentina" published in the Acts of the Fifth Latin American Geology Congress in Argentina in 1982.

These authors undertook field work including descriptions and mapping of the geology, mineralogy and measurements of size of the Lithium bearing pegmatite dykes and their internal structure where these were encountered within the Vilisman and Ancasti Groups, adjacent to the tenement areas applied for by the Company. The works also included details of trenching and modal estimates of spodumene (lithium silicate) content within the different mineralised zones of each pegmatite. This method of estimation of spodumene mineral content is considered appropriate considering the large size (up to 1 m) of the spodumene crystals and subsequent difficulty in obtaining representative samples to estimate grade through chemical analysis.

Cautionary Statement: The estimates of mineralisation in this report are regarded as historical foreign estimates and are not reported in accordance with the JORC Code. The Competent Person for this market release has not done sufficient work to classify the historical foreign estimates as mineral resources in accordance with the JORC Code; and it is uncertain that following evaluation and/or further exploration work that the historical foreign estimates will be able to be reported as mineral resources in accordance with the JORC Code. The Competent Person for this market release has visited four of the occurrences included in the historical foreign estimates (La Culpable, Reflejos del Mar, Santa Gertrudis and Ipizca II), and was able to verify the presence of spodumene at these pegmatite occurrences in the form and approximate modal content as described by the source authors.

The inclusion of the historical foreign estimates of mineralisation in this report is essential disclosure considering the proximity to the tenement applications made by the Company, the continuation of the same geological units hosting the historical foreign estimates of mineralisation into the tenement areas applied for by the Company, and the fact that the Company is in the process of securing rights to the areas referred to in the historical foreign estimates of mineralisation.



LATIN RESOURCES
Limited