

6 October 2016

**GEOPACIFIC RESOURCES LIMITED**  
ACN 003 208 393

**ASX Code: GPR**

info@geopacific.com.au  
www.geopacific.com.au

**AUSTRALIAN OFFICE**

Level 1, 278 Stirling Highway  
Claremont, WA 6010.  
PO Box 439,  
Claremont, WA 6910.  
T +61 8 6143 1823

**FIJI OFFICE**

PO Box 9975  
Nadi Airport  
Nadi  
T +679 6 72 7150  
F +679 6 72 7152

**DIRECTORS**

Chairman: Milan Jerkovic  
Managing Director: Ron Heeks  
Non-Exec Director: Mark Bojanjac  
Non-Exec Director: Ian B Clyne

**COMPANY SECRETARY**

John Lewis

**PROJECTS**

CAMBODIA:  
Kou Sa Copper

**FIJI:**

Nabila Gold  
Rakiraki Gold  
Sabeto Gold-Copper  
Vuda Gold-Copper  
Cakaudrove Gold-Silver

PAPUA NEW GUINEA:  
Woodlark Island Gold

## INVESTOR PRESENTATION – SYDNEY MINING CLUB

The Board of Geopacific Resources Limited (Geopacific) is pleased to announce this investor presentation. The presentation covers the Woodlark Gold Project following Geopacific's election to proceed to Tranche 2 of the Earn-in Transaction with Kula Gold Limited.



**Ron Heeks, Managing Director, will deliver the presentation to the Sydney Mining Club on 6 October 2016.**

### CONTACT

For further information on this update or the Company generally, please visit our website at [www.geopacific.com.au](http://www.geopacific.com.au) or contact:

**Mr Ron Heeks**

**Managing Director**

For personal use only



**GEOPACIFIC**  
RESOURCES LIMITED

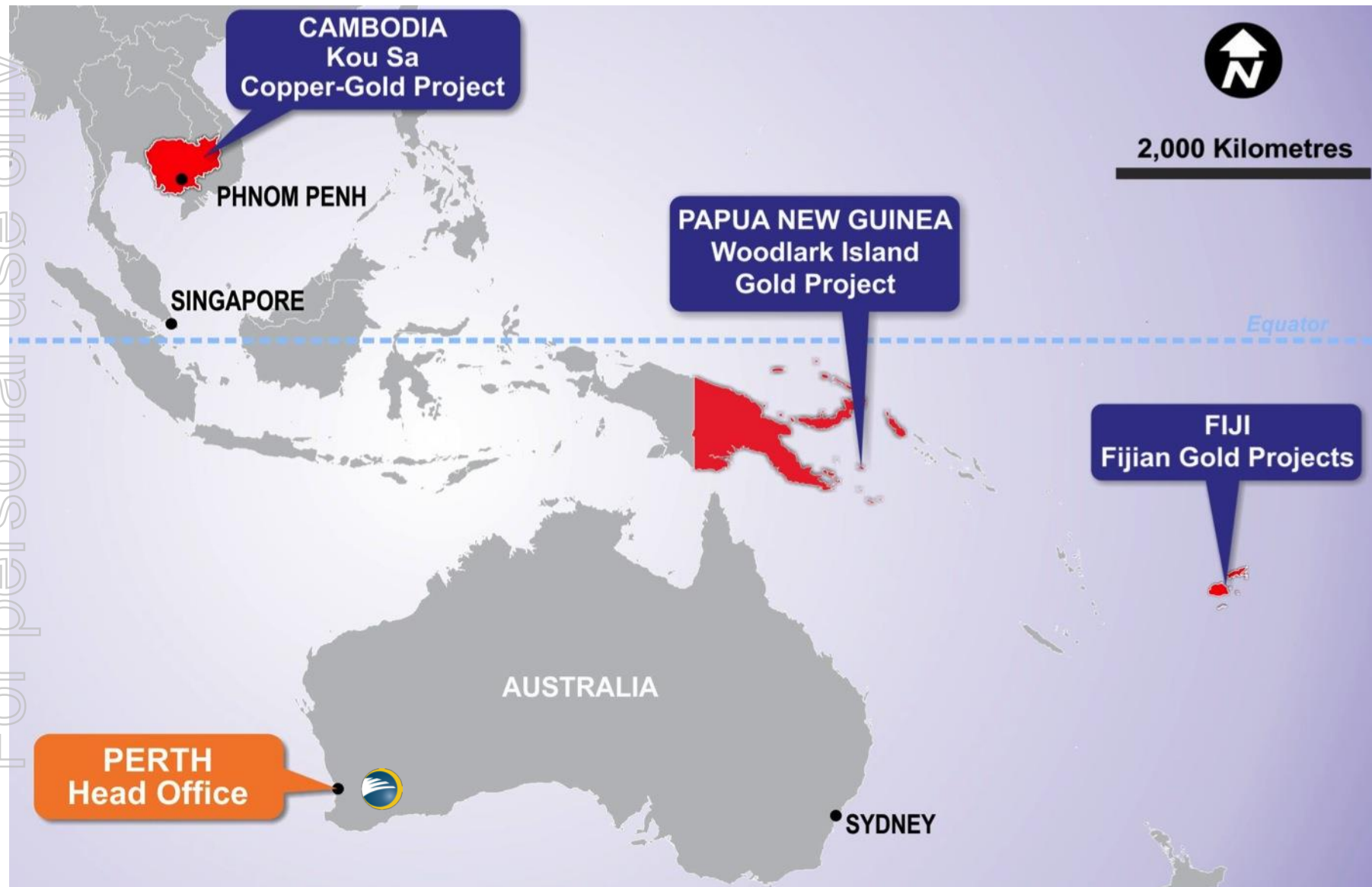


# The path to production at Woodlark Gold Project

Sydney Mining Club    October 2016



# Production focused, Asia-Pacific specialists



# Corporate Snapshot (ASX:GPR)

For personal use only

## Board

Milan Jerkovic	Non-Executive Chairman
Ron Heeks	Managing Director
Mark Bojanjac	Non-Executive Director
Ian Clyne	Non-Executive Director

## Capital Structure following completion of placement on 11 October 2016

Fully diluted no. of shares	1.06bn
Market Cap @ \$0.043	\$45m
Cash	\$13.5m
Shareholding – top 20	85%
Resource Capital Funds shareholding	32%
Tembo Capital shareholding	27%

# Expertise and ability to deliver

## Board and senior management team has successfully:

- Built over 10 mines in 6 countries
- Built and operated mines in remote areas including a small island
- Managed large portfolios of projects with impressive results

## Ron Heeks:

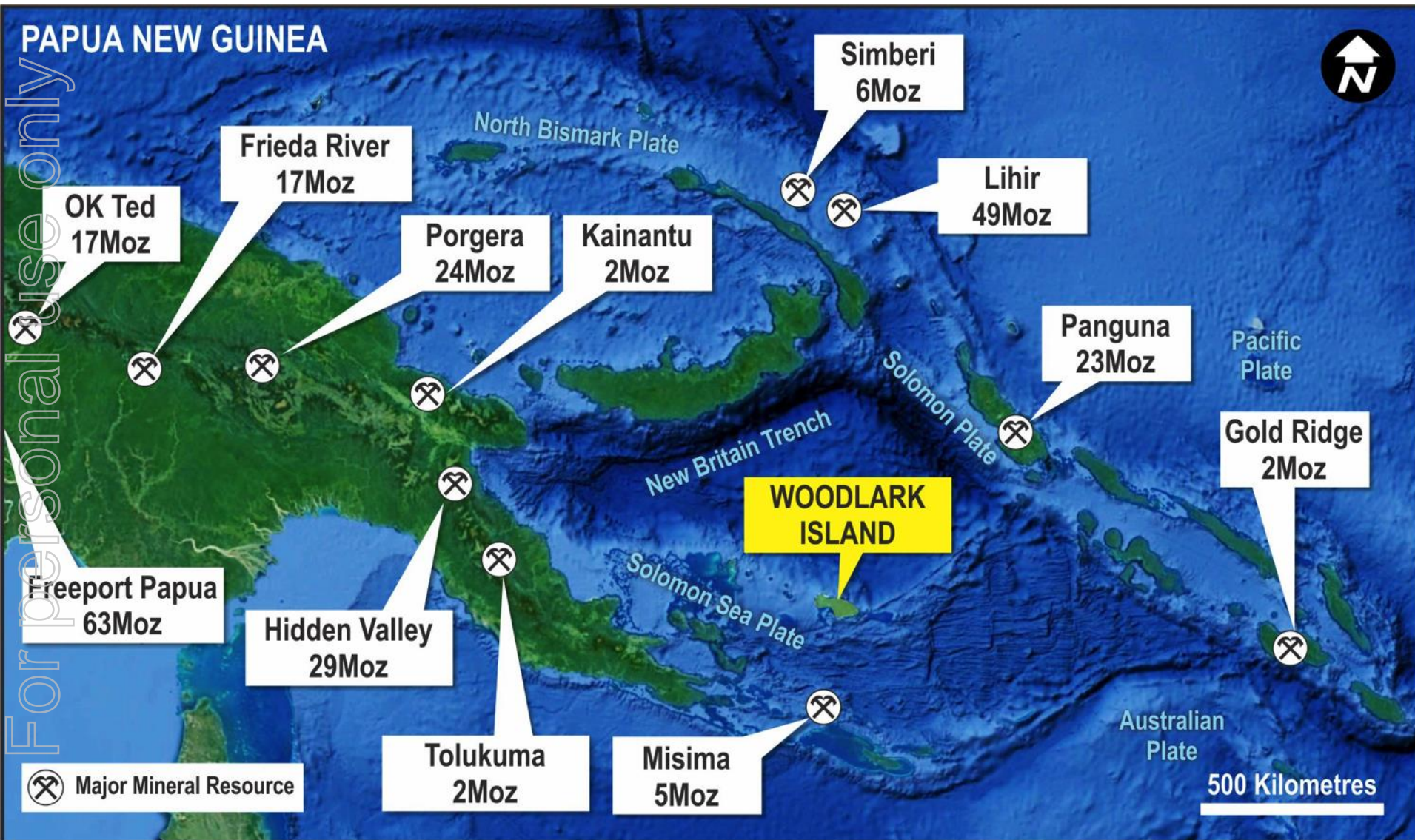
- Geologist with over 30 years of experience delivering projects from exploration into production
- Significant expertise of working in Asia
- Example – Technical Manager at Straits Asia responsible for turnarounds at Mt Muro gold mine and Sebuk coal mine

## Regional capability with a specialist field team:

- Expertise in exploration and development of gold projects in island arc environments
- Team has worked with Ron Heeks for over 15 years
- High-quality geological results in challenging areas



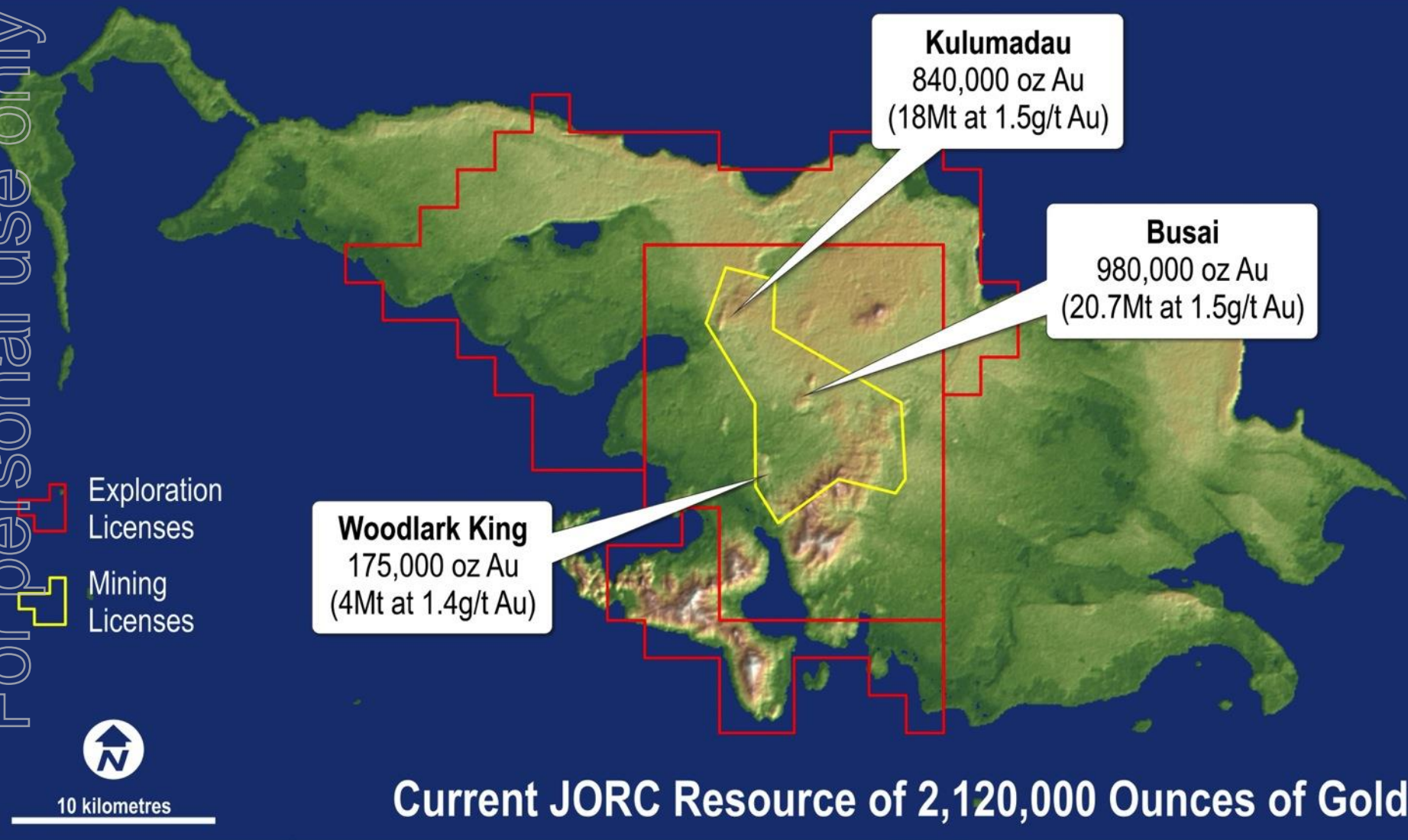
# "Elephant country"





# Woodlark Gold Project

For personal use only



# Earn-in transaction to acquire up to 80% of Woodlark Gold Project from Kula Gold Limited

Tranche 1

Max spend  
\$650K

Review project  
Create development plan  
Elect to proceed to Tranche 2  
to earn 5%



Decision to proceed announced 5 October 2016

Tranche 2

Max spend  
\$8M

Achieve 1.2Moz gold reserve  
target to earn 51%

Development drilling begins in November 2016

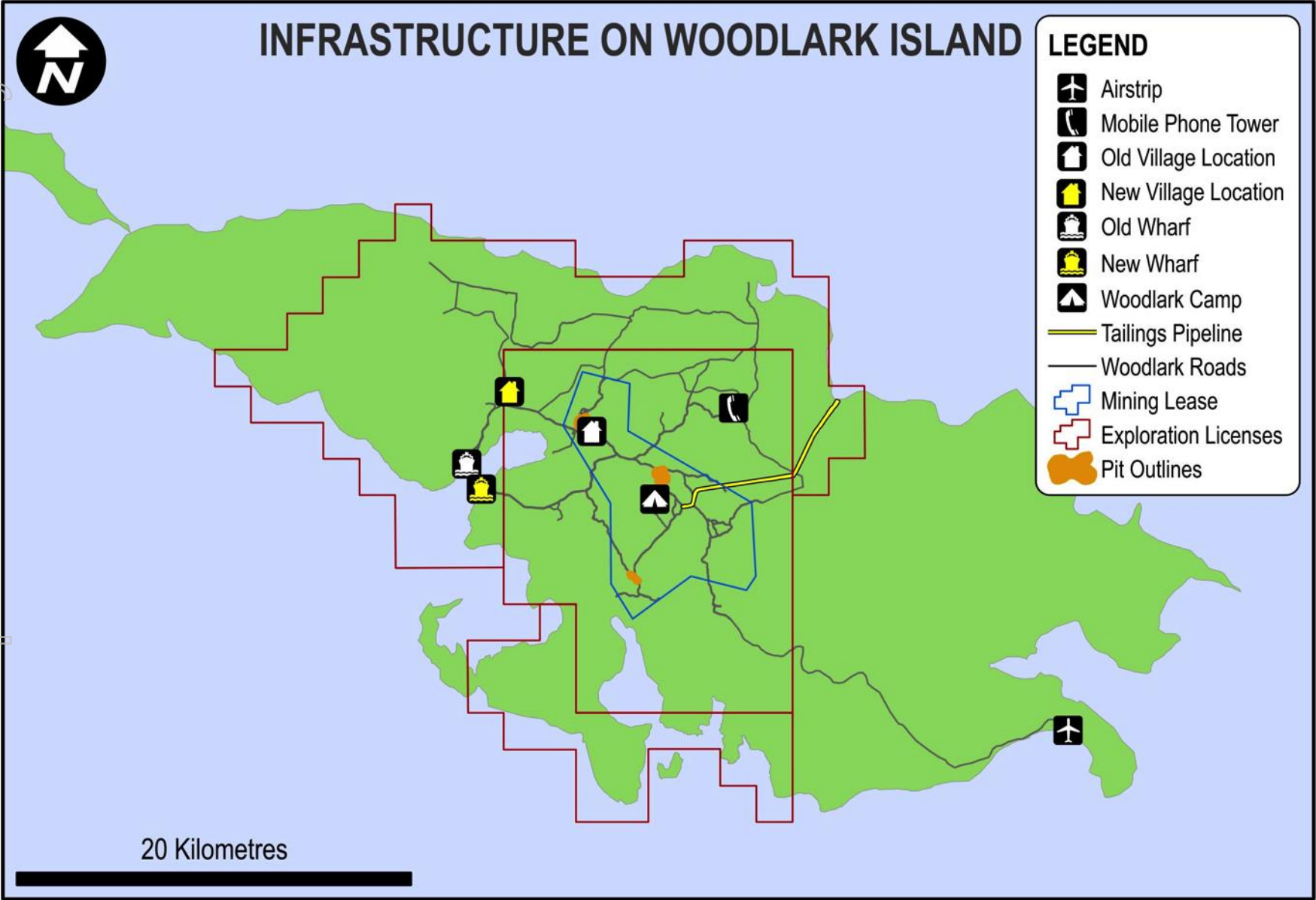
Tranche 3

Max spend  
\$10M

Achieve DFS target  
to earn 75%  
Raise all finance to earn 80%



# Infrastructure



# Birds eye view of Woodlark

For personal use only



**Looking towards Kulumadau from the existing warf**

# Development plan

## Aim

- > 150Koz pa producer
- > 10 year mine life
- Short development time

## Plan

### **Increase Ore Reserves to 1.2Moz gold**

- Limited development drilling
- Move inferred mineralisation to Measured & Indicated
- Focus on Busai and Kulumadai areas first

### **Rebase CAPEX and OPEX costs**

- Optimise economics
- Optimise scale

### **Optimise pit and engineering designs**

- Convert more Measured and Indicated into reserves
- Rebase mine schedule



# Benefits & Issues of working on Islands

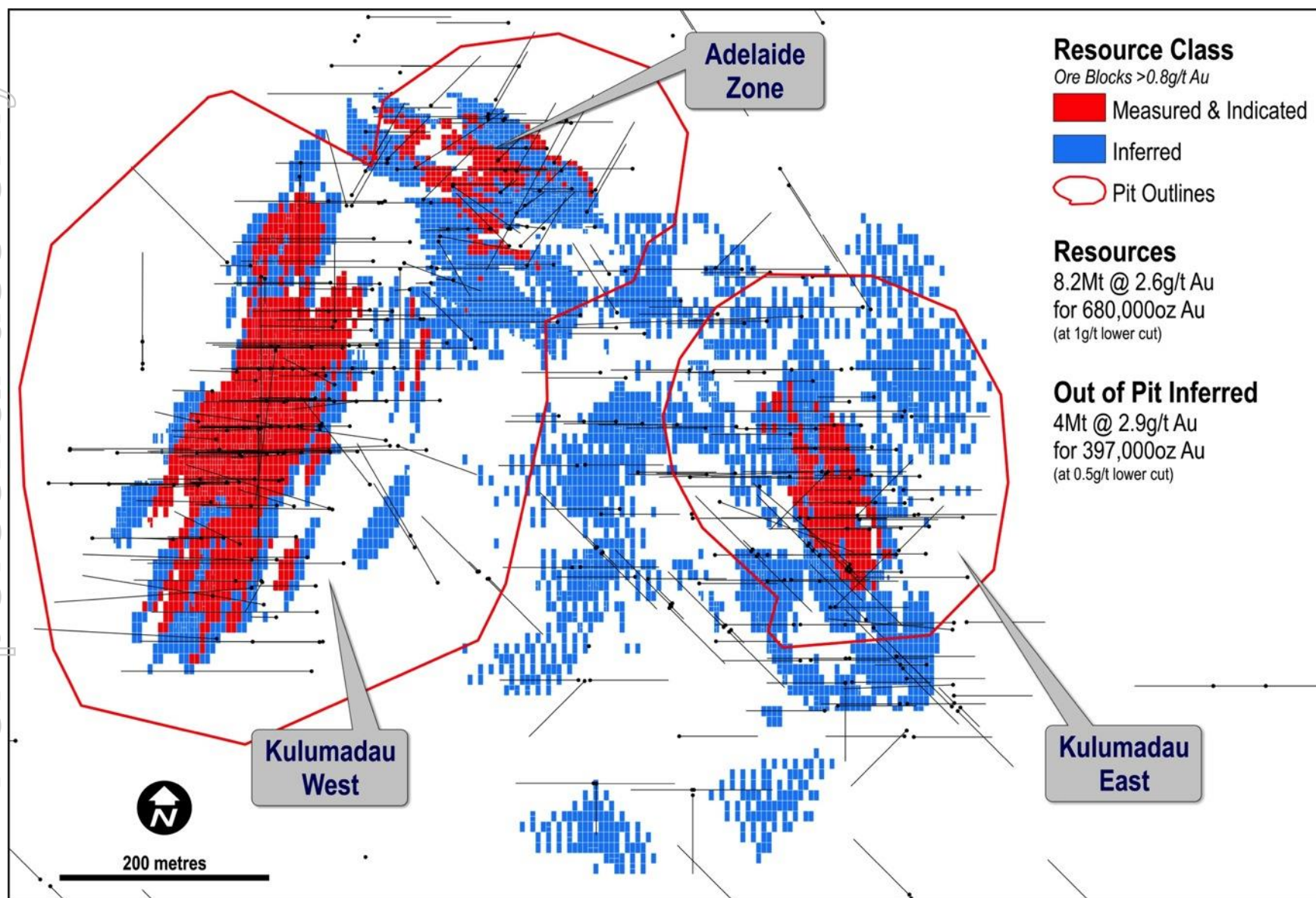
## Benefits of Islands

Delivery by barge and landing craft  
Direct delivery, no re-handling of goods  
Bulk purchase consumables, economies of scale  
Closed environment  
Limited interference

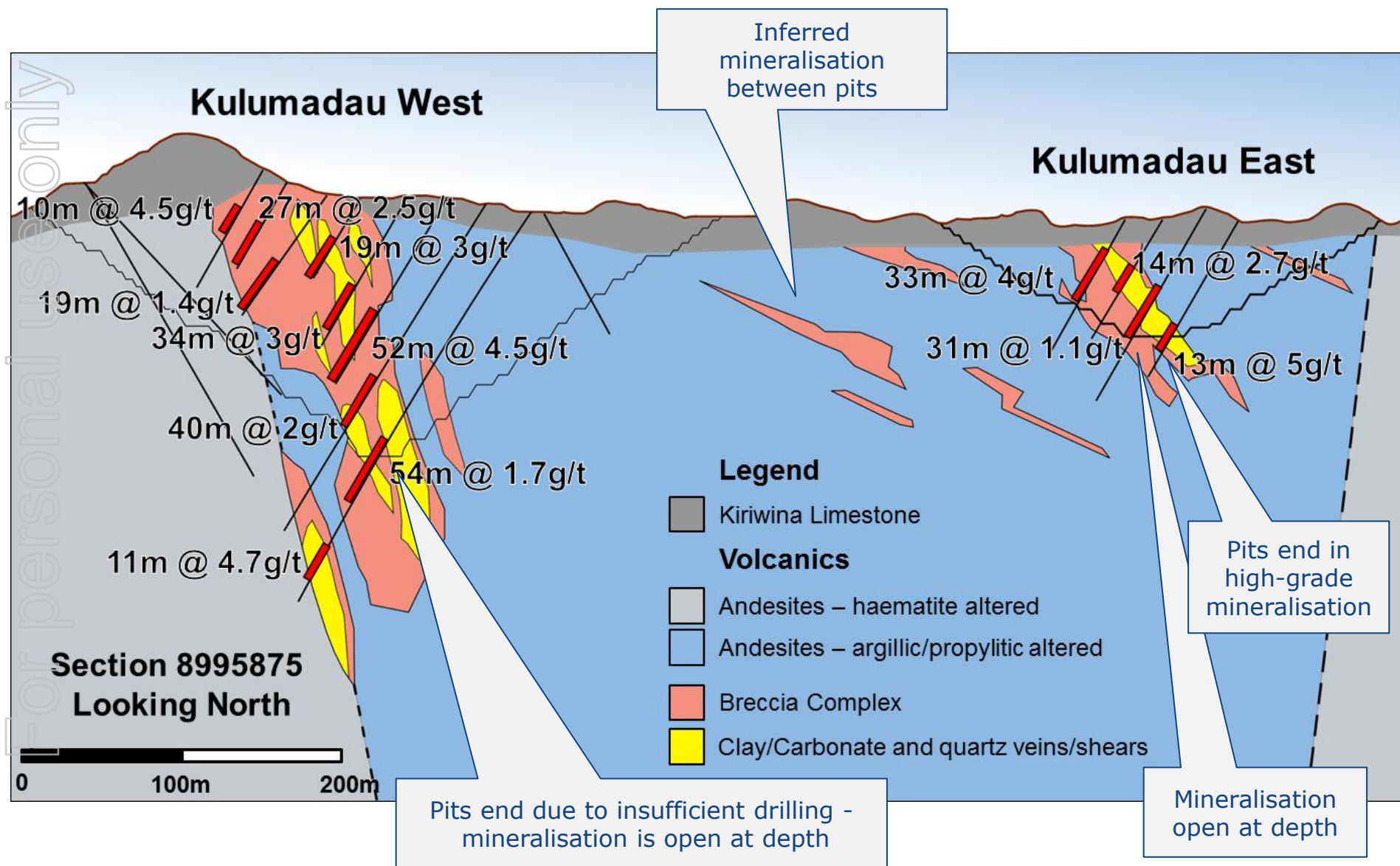
## Issues of Islands

FIFO workforce  
Logistical challenges

# Resources at Kulumadai area

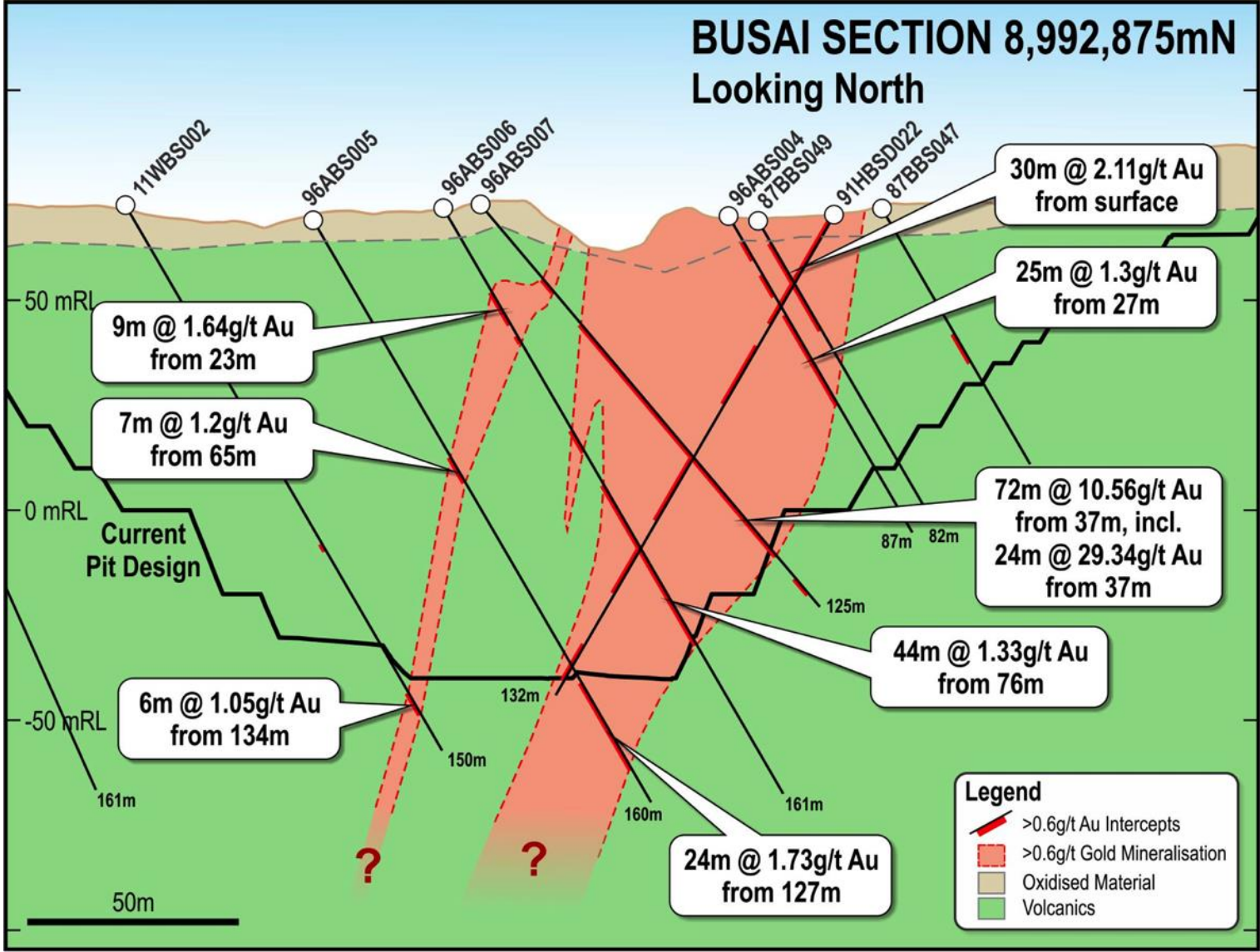


# Cross section at Kulumadau area

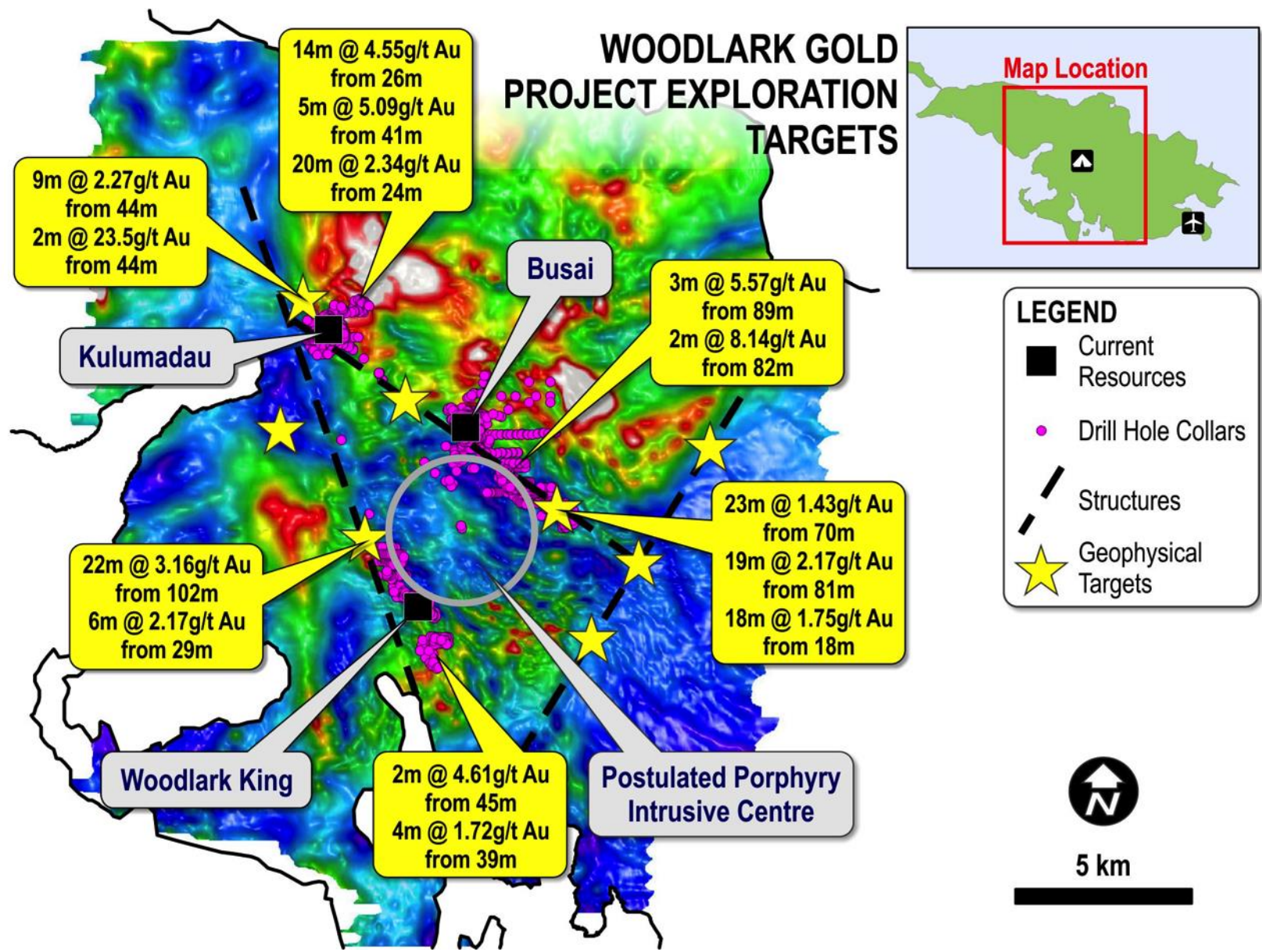




# Cross section at Busai area



# Significant exploration potential... “Elephant country”



# Investment opportunity

- **Experienced management team with a track record of delivering mines**
- **Development ready project**
- **Large resource base with exploration upside**
- **Major institutional support**



# Disclaimer & competent persons' statement



This presentation is for information purposes only. Neither this presentation nor the information contained in it constitutes an offer, invitation, solicitation or recommendation in relation to the purchase or sale of shares in any jurisdiction. This presentation may not be distributed in any jurisdiction except in accordance with the legal requirements applicable in such jurisdiction. Recipients should inform themselves of the restrictions that apply in their jurisdiction. Failure to do so may result in a violation of laws in such jurisdiction. This presentation does not constitute financial product advice and has been prepared without taking into account the recipient's investment objectives, financial circumstances or needs and the opinions and recommendations herein are not intended to represent recommendations of particular investments to particular persons. Recipients should seek professional advice when deciding if an investment is appropriate. All securities transactions involve risks, which include (among others) the risk of adverse or unanticipated market, financial or political developments.

## Competent Person's Statement

The information in this announcement that relates to exploration results is based on information compiled by or under the supervision of Ron Heeks, a Competent Person who is a Member of The Australasian Institute of Mining and Metallurgy and Managing Director of Geopacific. Mr Heeks has sufficient experience which is relevant to the style of mineralisation and type of deposit under consideration and the activity he is undertaking to qualify as a Competent Person as defined in the 2012 Edition of the "Australasian Code for Reporting of Exploration Results, Mineral Resources and Ore Reserves". Mr Heeks consents to the inclusion in the announcement of the matters based on his information in the form and context in which it appears.

The information in this announcement that relates to the Mineral Resource estimates for Kulumadau, Busai and Woodlark King is based on information compiled by Mr. John Doepel, Principal Geologist for Continental Resource Management Pty Limited (Resource Report, Woodlark Island). CRM has acted as independent consulting geologist to WML since 2005 and has undertaken several visits to the island and to the sample preparation facilities. Mr. Doepel is a Member of The Australasian Institute of Mining and Metallurgy and has sufficient experience which is relevant to the style of mineralisation and type of deposit under consideration and to the activity which he is undertaking to qualify as a Competent Person as defined in the 2012 Edition of the 'Australasian Code for Reporting of Exploration Results, Mineral Resources and Ore Reserves'. Mr Doepel consents to the inclusion in the announcement of the matters based on his information in the form and context in which it appears.

## Forward Looking Statements

All statements other than statements of historical fact included in this announcement including, without limitation, statements regarding future plans and objectives of Geopacific Resources Limited are forward-looking statements. When used in this announcement, forward-looking statements can be identified by words such as 'may', 'could', 'believes', 'estimates', 'targets', 'expects' or 'intends' and other similar words that involve risks and uncertainties.

These statements are based on an assessment of present economic and operating conditions, and on a number of assumptions regarding future events and actions that, as at the date of this announcement, are expected to take place. Such forward-looking statements are not guarantees of future performance and involve known and unknown risks, uncertainties, assumptions and other important factors, many of which are beyond the control of the company, its directors and management of Geopacific Resources Ltd that could cause Geopacific Resources Limited's actual results to differ materially from the results expressed or anticipated in these statements.

Geopacific Resources Ltd cannot and does not give any assurance that the results, performance or achievements expressed or implied by the forward-looking statements contained in this announcement will actually occur and investors are cautioned not to place undue reliance on these forward-looking statements. Geopacific Resources Ltd does not undertake to update or revise forward-looking statements, or to publish prospective financial information in the future, regardless of whether new information, future events or any other factors affect the information contained in this announcement, except where required by applicable law and stock exchange listing requirements. Woodlark is fully permitted fully by the PNG Government, subject to meeting the conditions of the licence.

# ASX announcement references



All information referenced in this presentation has been announced. The announcements can be viewed on Geopacific's website [www.geopacific.com.au](http://www.geopacific.com.au)

## The references are as follows:

- 11 July 2016 – Gold Project Acquisition
- 18 July 2016 – Investor Presentation – Woodlark Project
- 1 August 2016 – Woodlark Development Plan at Kulumadau
- 4 August 2016 – Woodlark Development Plan at Busai
- 18 August 2016 – Oversubscribed Capital Raising
- 28 August 2016 – Woodlark Resources
- 6 October 2016 – Woodlark – Election to Proceed
- 6 October 2016 – Appointment of Non-Executive Director

**Table 1**  
Report as per JORC2012  
As of July 2012 at 0.5g/t Au lower cutoff

Deposit	Category	Resource (Mt)	Grade – cut (g/t gold)	Gold – cut (Oz)
Kulumadau	Measured	5.0	1.78	285,000
	Indicated	4.4	1.75	245,000
	Inferred	8.6	1.4	375,000
	<b>Totals</b>	<b>18.0</b>	<b>1.6</b>	<b>910,000</b>
Busai	Measured	3.9	1.54	190,000
	Indicated	10.4	1.4	480,000
	Inferred	8.8	1.3	370,000
	<b>Totals</b>	<b>23.1</b>	<b>1.4</b>	<b>1,040,000</b>
Woodlark King	Indicated	3.0	1.2	115,000
	Inferred	1.0	1.8	60,000
	<b>Totals</b>	<b>4.0</b>	<b>1.4</b>	<b>175,000</b>
All	Measured	8.9	1.67	480,000
	Indicated	17.8	1.5	840,000
	Inferred	18.5	1.4	800,000
<b>Totals</b>	<b>All</b>	<b>45.1</b>	<b>1.5</b>	<b>2,120,000</b>

Note 1: Totals may appear incorrect due to rounding

Note 2: The Busai Indicated Resource includes 0.4Mt @ 1.4/t Au for 20,000oz from overlying alluvial mineralisation.

Note 3: The Busai Inferred Resources includes 0.4Mt @ 1.2/Au for 15,000oz from overlying alluvial mineralisation and 3.9Mt @ 0.9g/t Au for 110,000oz from Munsai (2km southeast of Busai)

Note 4: The Bonivat Inferred Resource includes 0.3Mt @ 3.0g/t for 30,000oz Au form Watou (1.5km south of Woodlark King)

Note 5: All Resources based on 0.5g/t gold cut-off grade